



JAPAN AUTOMOBILE FEDERATION

社団法人・日本自動車連盟

JAF公認番号 T-215

グループ /

発効年月日 1973年9月30日

F. I. A. Recognition No. 5567

Group 1

COMMISSION SPORTS FEDERATION INTERNATIONALE DE L'AUTOMOBILE

01306 05.1173

INTERNATIONALE

Form of recognition in accordance with Appendix J to the International Sporting Code.
国際スポーツ法典付則J項及びJAF国内競技車両規則に従った公認書式。

Manufacturer NISSAN MOTOR CO., LTD.
製造会社名

Serial No of chassis 製造開始シャシー型式番号 B(L)210-000001

engine 製造開始エンジン型式番号 A12-000001

Recognition is valid from 1.4.1974

The manufacturing of the model described in this recognition form was started on FEB. 1973 and the minimum production of 5,000 identical cars, in accordance with the specifications of this form was reached on MAY. 1973

Cylinder-capacity 総排気量	Reciprocation 1,171 cm ³ 71.4 cu.in. レシプロ	Special	cm ³	cu.in.
		特殊		
Model 型式及び通称名	B(L)210 DATSUN SUNNY 1200			
Manufacturer	NISSAN			
Manufacturer	NISSAN			
List				

Photograph A, 3/4 view of car from front 写真A、全体写真(斜め前方)



The vehicle described in this form has been subject to the following amendments :

Variants

on	19	rec. No.	List
on	19	rec. No.	List
on	19	rec. No.	List
on	19	rec. No.	List
on	19	rec. No.	List

Normal evolution of the type

on	19	rec. No.	List
on	19	rec. No.	List
on	19	rec. No.	List
on	19	rec. No.	List
on	19	rec. No.	List

Stamp and signature of the JAF

JAF公認印及び署名

難波靖治

Yasuharu Nanba



Stamp and signature of the F. I. A.

Handwritten signature and official seal of the F.I.A.

Make NISSAN

Model B(L) 210
型式

J.A.F. 認番号 T-215
F.I.A. Rec. No. 5567

IMPORTANT - the underlined items must be stated in two measuring systems, one of which must be the metric system. See conversion table hereafter.

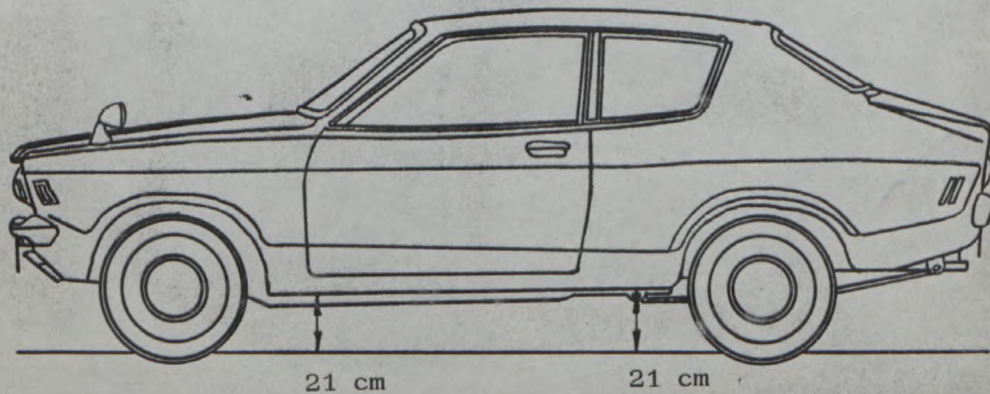
CAPACITIES AND DIMENSIONS
仕様諸元

1	Wheelbase ホイールベース	234.0	cm	92.1	inches
2	Front track フロント (前)	125.0	cm	49.2	inches *
3	Rear track リア (後)	124.5	cm	49.0	inches *
4	Overall length of the car 全長	395.0	cm	155.5	inches
5	Overall width of the car 全幅	154.5	cm	60.8	inches
6	Overall height of the car 全高	137.0	cm	53.9	inches
7	Capacity of fuel tank (reserve included) 燃料タンク容量			44	ltrs
		11.6	Gallon US		Gallon Imp.
8	Seating capacity 定員	5			
9	Weight, total weight of the car with normal equipment, water, oil and spare wheel but without fuel nor repair tools. 車両重量 (冷却水、オイル、スペアタイヤを含む標準状態の車両重量、但し燃料、車載工具を除く)	715	kg	1,576	lbs cwt

* Differences in track caused by the use of other wheels with different rim widths must be stated when recognition is requested for the wheels concerned.

** Specify ground clearance in relation to the track and give drawing of two fixed points of the vehicle's structure at which 車両の標準状態を示すためのサイドメンバー前端及び後端に於ける地上高 measurements are taken.

These ground clearance dimensions are only for information when checking the track and can in no way affect the eligibility of the car.



*** Width of the car measured in the vertical plane passing through the axle of the wheels.
車軸上の車体幅

Front フロント	154.2 cm	Rear リヤ	154.5 cm
---------------	----------	------------	----------

CONVERSION TABLE

1 inch / pouce	-- 2.54 cm	1 quart US	-- 0.9464 ltrs
1 foot / pied	-- 30.4794 cm	1 pint (pt)	-- 0.568 ltrs
1 square inch / pouce carre	-- 6.452 cm ²	1 gallon Imp.	-- 4.546 ltrs
1 cubic inch / pouce cube	-- 16.387 cm ³	1 gallon US	-- 3.785 ltrs
1 pound / livre (lb)	-- 453.593 gr.	1 hundred weight (cwt)	-- 50.802 kg



Make- NISSAN

Model B(L) 210
 型式

CHASSIS AND COACHWORK (Photographs A, B and C)

- シャーシー、ボデー
20. Chassis/body construction : ~~SEPARATE~~ unitary construction
 シャーシー/ボデーの構造 ~~XXXXXX~~ 一体構造
21. Unitary construction, material (s) Steel
 一体構造の場合その材質
22. Separate constructions: material(s) of chassis
 セパレート構造の場合その材質
23. Material (s) of coachwork
 ボデーの材質
24. Number of doors 2 Material (s) Steel
 ドアの数 材質
25. Material (s) of bonnet Steel
 ボンネットの材質
26. Material (s) of boot lid Steel
 トランクリッドの材質
27. Material (s) of rear-window Glass
 リヤウインドシールドの材質
28. Material (s) of windscreen Glass (Laminated)
 フロントウインドシールドの材質
29. Material (s) of front-door windows Glass
 フロントドアウインドーの材質
30. Material (s) of rear-door windows Glass
 リヤドアウインドーの材質
31. Sliding system of door windows Vertical, manual
 ドアウインドーの開閉方式
32. Material (s) of rear-quarter light Glass
 リヤクォーターウインドーの材質

ACCESSORIES AND UPHOLSTERY
 アクセサリ

38. Interior heating : yes - ~~XXXX~~ 39. Air-conditioning : ~~XXXX~~ - no
40. Ventilation : yes - ~~XXXX~~
41. Front seats, type of seats and upholstery Separate, vinyl
 フロントシートの形式と表張りの材質
42. Weight of front seat (s), complete with supports and rails, out of the car :
 フロントシートの重量 (ブラケット、シートレール付)
 13 X 2 kg lbs
43. Rear seats, type of seats and upholstery Bench, vinyl
 リヤシート形式と表張りの材質
44. Front bumper, material (s) Steel Weight 3.5 kg lbs
 フロントバンパーの材質 重量
45. Rear bumper, material (s) Steel Weight 3.5 kg lbs
 リヤバンパーの材質 重量

WHEELS
 ホイール

50. Type Pressed steel
 形式
51. Weight (per wheel, without tyre) 5.0 kg lbs
 重量
52. Method of attachment 4 Nuts
 取付け方法
53. Rim diameter 305 mm 12 inches
 リム径
54. Rim width 102 mm 4 inches
 リム幅

STEERING
 ステアリング

60. Type Recirculating ball
 形式
61. Servo-assistance : ~~XXXX~~ - no
 パワーステアリング 無
62. Number of turns of steering wheel from lock to lock 3.5
 ロックツーロック
63. In case of servo-assistance



Make NISSAN

Model B(L)210
型式

J.A.F. 記番号 T-215
F.I.A. Rec. No. 5567

SUSPENSION
サスペンション

- | | | |
|---|---|----------------------|
| 70. Front suspension (photogr. D), type
フロントサスペンションの形式 | | Mcpherson |
| 71. Type of spring
スプリングの種類 | | Coil |
| 72. Stabiliser (if fitted)
スタビライザーの形式 | | Torsion bar |
| 73. Number of shockabsorbers
ショックアブソーバーの数 | 2 | 74. Type
形式 |
| 78. Rear suspension (photogr. E), type
リヤサスペンションの形式 | | Hydraulic Telescopic |
| 79. Type of spring
スプリングの種類 | | Rigid axle |
| 80. Stabiliser (if fitted)
スタビライザーの形式 | | Leaf |
| 81. Number of shockabsorbers
ショックアブソーバーの数 | 2 | 82. Type
形式 |
| | | Hydraulic Telescopic |

BRAKES (photographs F and G)
ブレーキ

- | | | |
|---|---|-----------|
| 90. System
作動方式 | | Hydraulic |
| 91. Servo-assistance (if fitted), type
サーボシステムの形式 | | |
| 92. Number of hydraulic master cylinders
マスターシリンダーの数 | 1 | |

	FRONT フロント			REAR リヤ		
	2			1		
93. Number of cylinders per wheel ホイール当りのシリンダー数						
94. Bore of wheel cylinder (s) ホイールシリンダーの内径	20.6	mm	in.	20.6	mm	in.
Drum Brakes ドラムブレーキ						
95. Inside diameter ドラムの内径	203	mm	in.	203	mm	in.
96. Length of brake linings ライニングの長さ	195	mm	in.	195	mm	in.
97. Width of brake linings ライニングの幅	35	mm	in.	35	mm	in.
98. Number of shoes per brake ブレーキ当りのシューの数	2			2		
99. Total area per brake 1ブレーキ当りの総摩擦面積	13,650	mm ²	sq. in.	13,650	mm ²	sq.
Disc brakes ディスクブレーキ						
100. Outside diameter ディスクの外径		mm	in.		mm	in.
101. Thickness of disc ディスクの厚さ		mm	in.		mm	in.
102. Length of brake linings パッドの長さ		mm	in.		mm	in.
103. Width of brake linings パッドの幅		mm	in.		mm	in.
104. Number of pads per brake ブレーキ当りのパッドの数						
105. Total area per brake 1ブレーキ当りの総摩擦面積		mm ²	sq. in.		mm ²	sq. in.



ENGINE (photographs J and K) **

130. Cycle サイクル	4	131. Number of cylinders シリンダー数	4
132. Cylinder arrangement シリンダー配列	In-line		
133. Bore ボア	73.0 mm	134. Stroke ストローク	70.0 mm
	2.87 in.		2.76 in.
135. Capacity per cylinder 1シリンダーの排気量	292.98	cm ³	17.878 cu. in.
136. Total cylinder-capacity 総排気量	1,171	cm ³	71.51 cu. in.
137. Material (s) of cylinder block シリンダーブロックの材質	Cast-iron		
138. Material (s) of sleeves (if fitted) スリーブの材質			
139. Cylinder-head, material (s) シリンダーヘッドの材質	Aluminum alloy	Number fitted 数	
140. Number of inlet ports 吸気孔の数	4	141. Number of exhaust ports 排気孔の数	4
142. Compression ratio 圧縮比	9.0		
143. Volume of one combustion chamber 燃焼室の容積		36.6	cm ³ cu. in.
144. Piston, material ピストンの材質	Aluminum alloy	145. Number of rings リングの数	3
146. Distance from gudgeon pin centre line to highest point of piston crown ピストンピンとピストンクラウン最頂点との距離	32 mm		inches
147. Crankshaft : mandrel / stamped クランクシャフト 鍛造 / 鍛造	Steel	148. Type of crankshaft : integral / integral クランクシャフトの形式 : 単式 / 複式	
149. Number of crankshaft main bearings メインベアリングの数	5		
150. Material of bearing cap ベアリングキャップの材質	Cast-iron		
151. System of lubrication : dry sump / oil in sump 潤滑方式 : ドライサンプ / ウェットサンプ			
152. Capacity, lubricant 潤滑油量	3.4 ltrs		pts quarts US
153. Oil cooler : yes / no オイルクーラー : 有 / 無		154. Method of engine cooling エンジン冷却方式	Water quarts US
155. Capacity of cooling system 冷却水の総量	4.0 ltrs		pints quarts US
156. Cooling fan (if fitted), dia. 冷却ファンの直径	310 mm		inches
157. Number of blades of cooling fan 冷却ファンのブレード数	4		

Bearings **
ベアリング

158. Crankshaft main, type メインベアリングの形式	Plain	Dia. 内径	50 mm	in.
159. Connecting rod big end, コンロッド大端部ベアリングの形式	Plain	Dia. 内径	45 mm	in.

Weights **
重量

160. Flywheel (clean) フライホイール	9.5 kg	lbs	
161. Flywheel with clutch (all turning parts) クラッチ付フライホイール		13.1 kg	lbs
162. Crankshaft クランクシャフト	10.8 kg	163. Connecting rod コンロッド	0.43 kg lbs
164. Piston with rings and pin ピストン (リング、ピン含む)	0.33 kg		lbs

** for additional information concerning Wankel rotary engines see page 15, 16
ロータリーエンジンは15、16頁参照



Make NISSAN

Model B(L)210
型式

J.A.F. 公認番号 T-215

F.I.A. Rec. No. 5567

FOUR STROKE ENGINES * , **

4サイクルエンジン

- 170. Number of camshafts **1** 171. Location **Cylinder block**
カムシャフトの数 カムシャフトの位置
- 172. Type of camshaft drive **Chain**
- 173. Type of valve operation **push rod**
バルブの作動方式

INLET (see page 8) * , **
吸気系

- 180. Material(s) of inlet manifold **Aluminum alloy**
マニホールドの材質
- 181. Diameter of valves **35** mm **1.38** inches
バルブの径
- 182. Max. valve lift **9** mm **0.35** in. 183. Number of valve springs **2**
バルブリフト バルブスプリングの数
- 184. Type of spring **Coil** 185. Number of valves per cylinder **1**
バルブスプリングの種類 シリンダー当りのバルブの数
- 186. Tappet clearance for checking timing (cold) **0.35** mm inches
- 187. Valves open at (with tolerance for tappet clearance indicated) **B.T.D.C 14° ± 3°**
バルブ開き始め
- 188. Valves close at (with tolerance for tappet clearance indicated) **A.B.D.C 54° ± 3°**
バルブ閉じ終り
- 189. Air filter, type **Dry**
エアークリーナーの形式

EXHAUST (see page 8) * , **
排気系

- 195. Material (s) of exhaust manifold **Cast-iron**
マニホールドの材質
- 196. Diameter of valves **29** mm **1.14** inches
バルブの径
- 197. Max. valve lift **9** mm **0.35** in. 198. Number of valve springs **2**
バルブリフト バルブスプリングの数
- 199. Type of spring **Coil** 200. Number of valves per cylinder **1**
バルブ・スプリングの種類 シリンダー当りのバルブの数
- 201. Tappet clearance for checking timing (cold) **0.35** mm inches
- 202. Valves open at (with tolerance for tappet clearance indicated) **B.B.D.C 56° ± 3°**
バルブ開き始め
- 203. Valves close at (with tolerance for tappet clearance indicated) **A.T.D.C 12° ± 3°**
バルブ閉じ終り

CARBURETION (photograph N)
気化器

- 210. Number of carburetors fitted **1** 211. Type **Down draft**
キャブレターの数 形式
- 212. Make **HITACHI** 213. Model **DCG306**
製造会社 型式
- 214. Number of mixture passages per carburettor **2**
- 215. Flange hole diameter of exit port(s) of carburettor **26 & 30** mm in
キャブレター出口内径
- 216. Minimum dimensions of mixture pasage (s) ~~with mixer of max. height 100 mm~~
ベンチュリーの最小寸法 **20 & 26** mm inches

INJECTION (if fitted)
燃料噴射

- 220. Make of pump
ポンプの製造会社
- 222. Model or type of pump
- 224. Location of injectors
ノズルの位置
- 225. Minimum diameter of inlet pipe **mm** inches
吸気管の最小径
- 221. Number of plungers
プランジャーの数
- 223. Total number of injectors
ノズルの総数

*) for additional information concerning two-stroke engines and super-charged engines see page 14.
2サイクルエンジン、過給機付エンジンは14頁参照

**) for additional information concerning Wankel rotary engines see page 15, 16.
ロータリーエンジンは15, 16頁参照



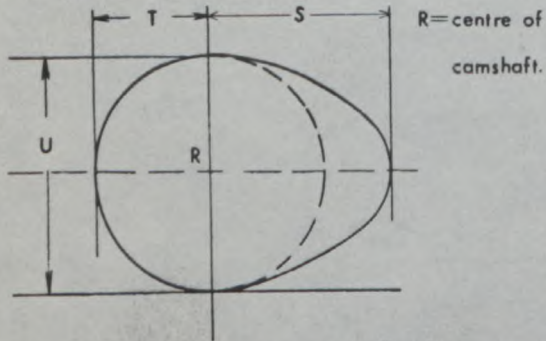
ENGINE ACCESSORIES
エンジン補機

- | | | | |
|--|--------------|--|--------|
| 230. Fuel pump : mechanical mechanical
燃料ポンプ 機械式/電気式 | | 231. No. fitted
ポンプの数 | 1 |
| 232. Type of ignition system
点火方式 | Make & break | 233. No. of distributors
ディストリビューターの数 | 1 |
| 234. No. of ignition coils
コイルの数 | 1 | 235. No. of spark plugs per cylinder / per cylinder
シリンダー当りのプラグ数(2) | 1 |
| 236. Generator, type: DC / alternator-number fitted
発電機 交流 数 | | 237. Method of drive
駆動方式 | V-belt |
| 238. Voltage of generator
発電機電圧 | 12 volts | 239. Battery, number
バッテリーの数 | 1 |
| 240. Location
バッテリー位置 | Engine room | | |
| 241. Voltage of battery
バッテリー電圧 | 12 volts | | |

ENGINE AND CAR PERFORMANCES (as declared by manufacturer in catalogue)

- | | | | |
|-------------------------------|-------------|----------------------------|--------------|
| 250. Max. engine output | 68 ps | (type of horsepower: JIS) | at 6,000 rpm |
| 251. Maximum rpm | 6,400 rpm | output at that figure | 64 ps |
| 252. Maximum torque | 9.7 kg-m | at 3,600 rpm | |
| 253. Maximum speed of the car | 150 km/hour | | miles / hour |

255. Cam profile
カムプロフィール



Inlet cam
吸気カム

S =	20.9	mm	0.82	inches
T =	15.3	mm	0.60	inches
U =	30.6	mm	1.18	inches

Exhaust cam
排気カム

S =	20.9	mm	0.82	inches
T =	15.3	mm	0.60	inches
U =	30.6	mm	1.18	inches

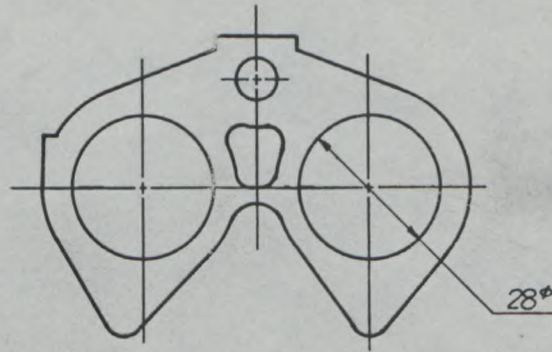


Make NISSAN

Model B(L)210
型式

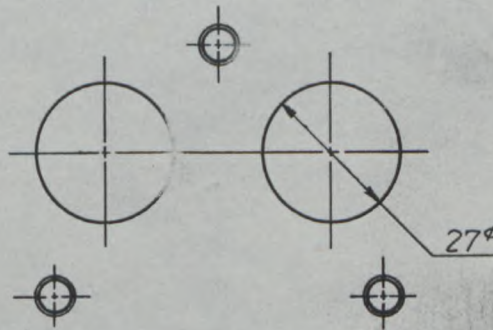
Drawing inlet manifold ports, side of cylinder-head/~~XXXXXX~~ scale or dimensions and manufacturing tolerance.

吸気マニホールドのポート (シリンダーヘッド側)



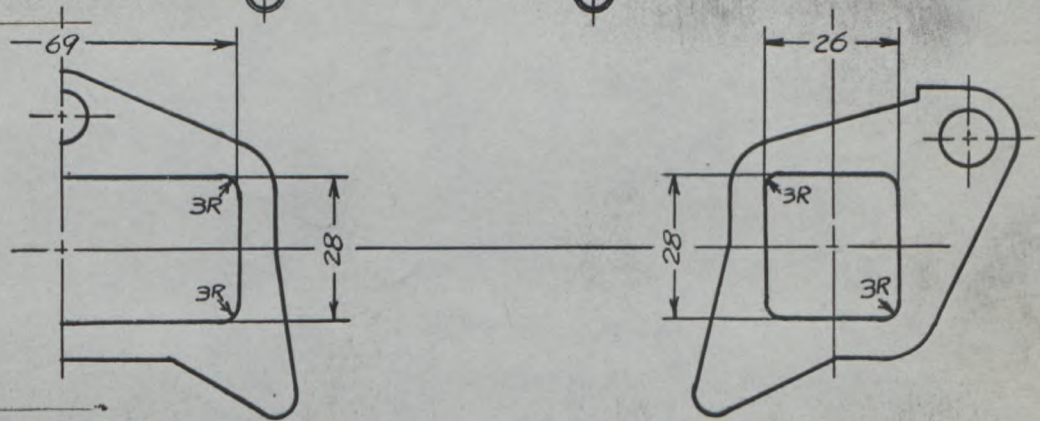
Drawing of entrance to inlet port of cylinder-head/~~XXXXXX~~ scale or dimensions and manufacturing tolerance.

シリンダーヘッドの吸気ポート (吸気マニホールド側)



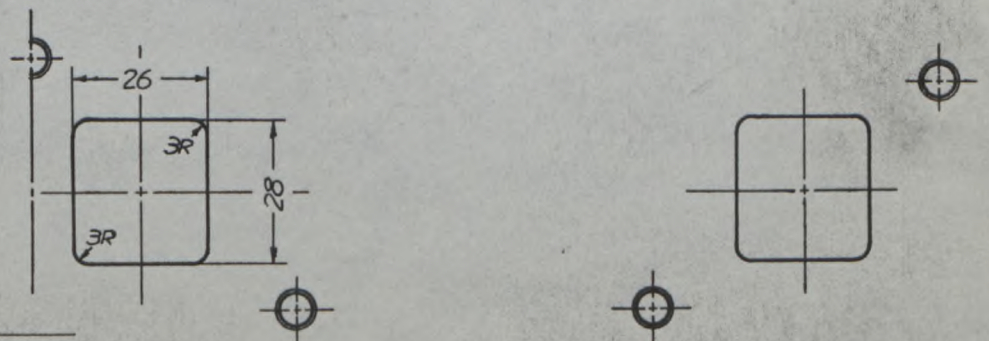
Drawing exhaust manifold ports, side of cylinder-head/~~XXXXXX~~ scale or dimensions and manufacturing tolerance.

排気マニホールドのポート (シリンダーヘッド側)



Drawing of exit to exhaust port of cylinderhead/~~XXXXXX~~ Indicate scale or dimensions and manufacturing tolerance.

シリンダーヘッドの排気ポート (排気マニホールド側)



Unit: mm

~~Tolerance: XXXX~~



DRIVE TRAIN
駆動系

CLUTCH
クラッチ

260. Type of clutch 形式 Dry plate 261. No. of plates プレッシュャープレートの数 1
262. Dia. of clutch plates プレッシュャープレートの外径 180 mm inches
263. Dia. of linings, inside フェーシングの内径 125 mm outside 180 mm in.
264. Method of operating clutch 作動方式 Mechanical

GEAR BOX (photograph H)
トランスミッション

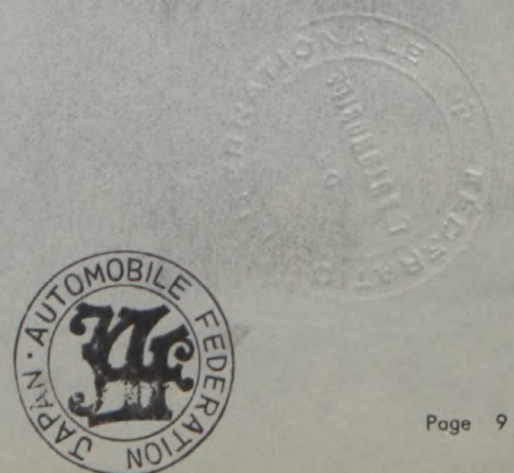
270. Manual type, make 手動式の製造会社名 NISSAN Method of operation 作動方式 Mechanical
271. No. of gear-box ratios forward 前進段数 4 272. Synchronized forward ratios 1,2,3 & 4.
273. Location of gear-shift シフトレバーの位置 Floor
274. Automatic, make 自動式の製造会社名 NISSAN type 形式 3N71B
275. No. of forward ratios 前進段数 3 276. Location of gear-shift シフトレバーの位置 Floor

277.	Manual 手動		Automatic 自動		Alternative manual 手動 / 自動		Ratio ギヤー比	No. teeth 歯数
	Ratio ギヤー比	No. teeth 歯数	Ratio ギヤー比	No. teeth 歯数	Ratio ギヤー比	No. teeth 歯数		
1	3.76	$\frac{29}{19} \times \frac{32}{13}$	2.46	$\frac{72}{19} \times \frac{19}{33} + 1&$	2.86	$\frac{29}{19} \times \frac{30}{16}$		
2	2.17	$\frac{29}{19} \times \frac{27}{19}$	1.46	$\frac{19}{72} \times \frac{33}{19} + 1$ $\frac{19}{72} \times \frac{33}{19} + 1$	1.91	$\frac{29}{19} \times \frac{25}{20}$		
3	1.40	$\frac{29}{19} \times \frac{23}{25}$	1.00		1.35	$\frac{29}{19} \times \frac{23}{26}$		
4	1.00				1.00			
5								
6								
reverse リバース	3.64	$\frac{29}{19} \times \frac{17}{13} \times \frac{31}{17}$	2.18	$\frac{19}{13} \times \frac{72}{19}$	3.64	$\frac{29}{19} \times \frac{17}{13} \times \frac{31}{17}$		

278. Overdrive, type オーバードライブ形式
279. Forward gears on which overdrive can be selected オーバードライブの作動段数
280. Overdrive ratio オーバードライブ比

FINAL DRIVE
ファイナル

290. Type of final drive 形式 Hypoid gear
291. Type of differential 差動機形式 Bevel gear
292. Type of limited slip differential (if fitted) リミテッドスリップデフの形式
293. Final drive ratio ギヤー比 3.90 4.11
Number of teeth 歯数 39/10 37/9



Make NISSAN

Model B(L)210

J.A.F. 登録号 T-215

F.I.A. Rec. No. 5567

Optional equipment affecting preceding information. This to be stated together with reference number

COMMISSION SPORTIVE
 00000 00.3.74
 INTERNATIONALE

The following items have been added.

ENGINE

* Thickness of head gasket when compressed			0.75	mm
** Reboring dimentions			0.15	mm
133. <u>Max bore</u>	73.3	mm	2.88	in.
135. <u>Max capacity per cylinder</u>	295.25	cm ³	18.018	cu.in.
136. <u>Max total, cylinder-capacity</u>	1,181	cm ³	72.07	cu.in.

Photograph

B, 3/4 view of car from rear



C, Interior view of car through driver's door (open) with dashboard



C, Interior view of car through driver's door (open) with dashboard



C, Interior view of car through driver's door (open) with dashboard



C, Interior view of car through driver's door (open) with dashboard



Make NISSAN

Model B(L)210
型式

J·A·F公認番号 T-215

F.I.A. Rec. No. 5567

Photograph

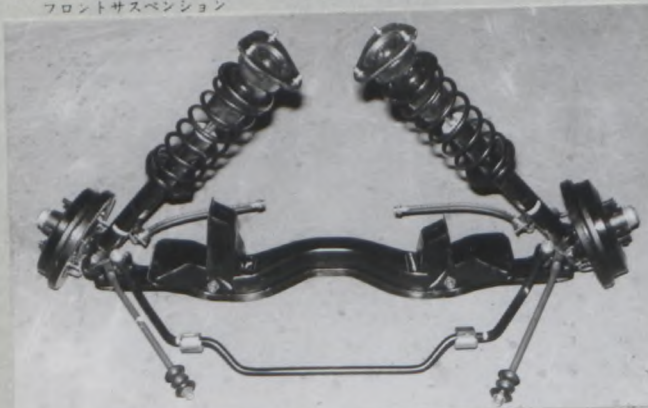
写真

Interior view of car through driver's door (open or removed) with dashboard 運転席附近

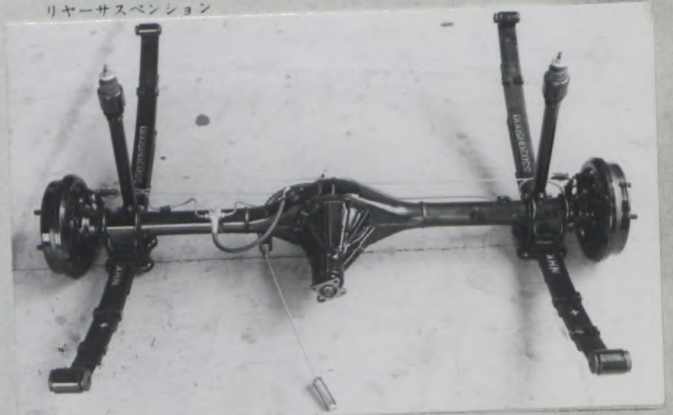
B, 3/4 view of car from rear 全体写真(斜め後方)



D, Front axle complete, removed from car. Without wheels. フロントサスペンション



E, Rear axle complete without wheels, removed from car. リヤサスペンション



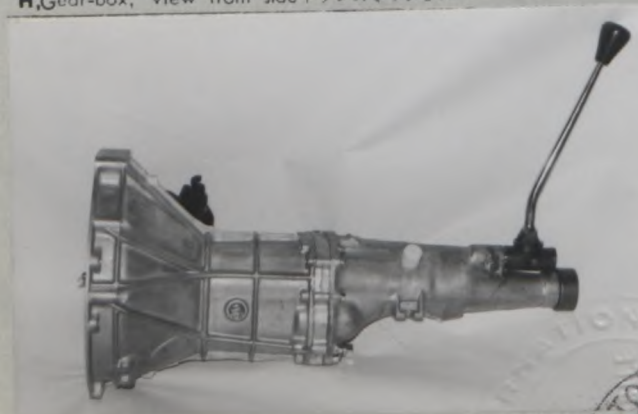
F, Front brake, drum removed ~~axle disc with calipers~~ フロントブレーキ



G, Rear brake, drum removed ~~axle disc with calipers~~ リヤブレーキ



H, Gear-box, view from side トランスミッション



I, Silencer + exhaust pipes after exhaust manifold. 排気系



Make NISSAN

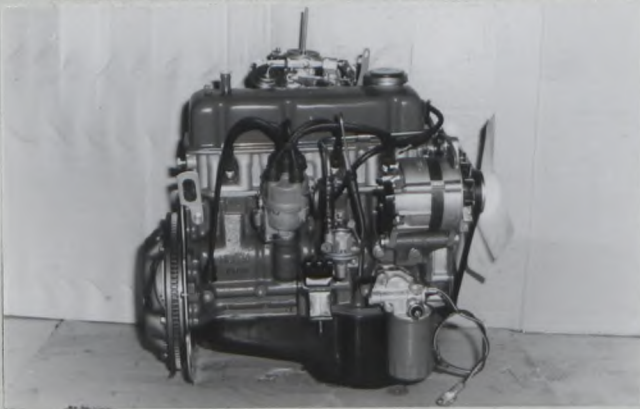
Model B(L)210
型式

J.A.F.公認番号 T-215

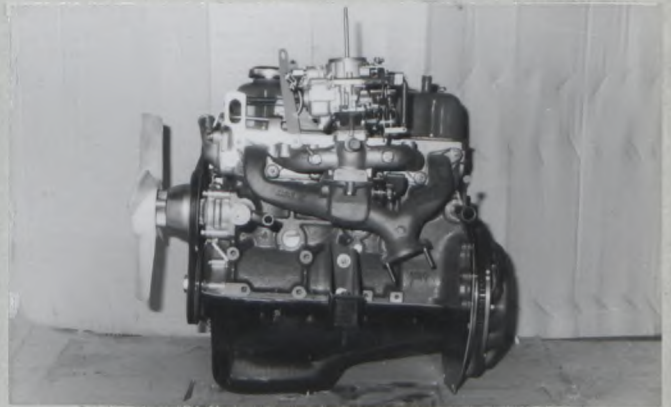
F.I.A. Rec. No. 5567

Photograph

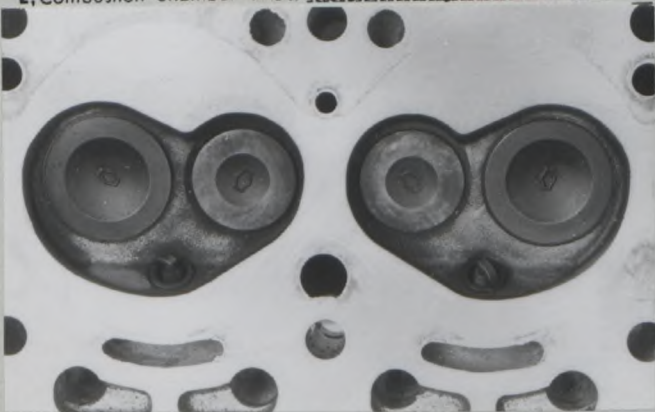
Engine unit out of car, from right. With clutch and accessories but without air filter nor gear-box. エンジン右側面



Engine unit out of car, from left. With clutch and accessories but without gear-box nor air filter. エンジン左側面



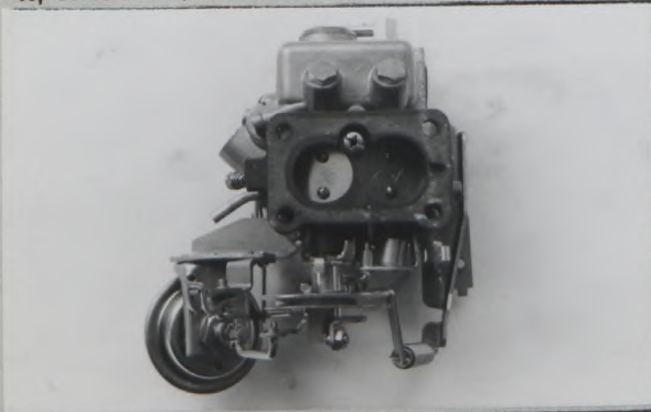
L, Combustion chamber 燃焼室 / Piston housingxxxxxxxxx



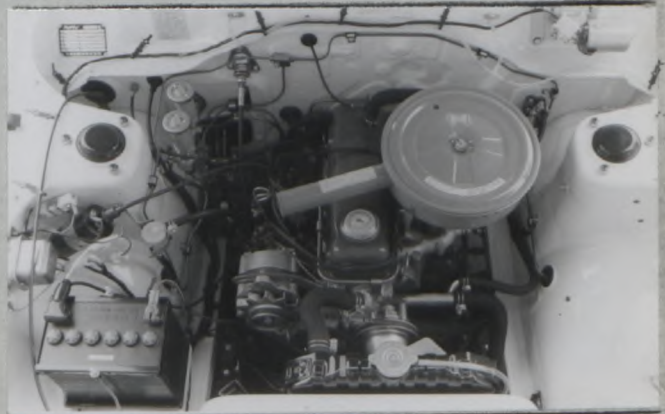
M, Piston crown ピストンクラウン / Piston bookxxxxxx



N, Carburettor (view from side of manifold) 気化器



O, Engine in car with all accessories, bonnet open or removed. エンジンルーム



P, Inlet manifold 吸気マニホールド



Q, Exhaust manifold 排気マニホールド



BRAKES (photograph F)

	FRONT	REAR
93. Number of cylinders per wheel	1	1
94. Bore of wheel cylinder	48.1 mm	17.5 mm
DISC BRAKE		
100. Outside diameter	213 mm	
101. Thickness of disc	10 mm	
102. Length of brake linings	53 mm	
103. Width of brake linings	43 mm	
104. Number of pads per brake	2	
105. Total area per brake	4,280 mm ²	

Photograph

F, Front brake, disc with caliper(s)



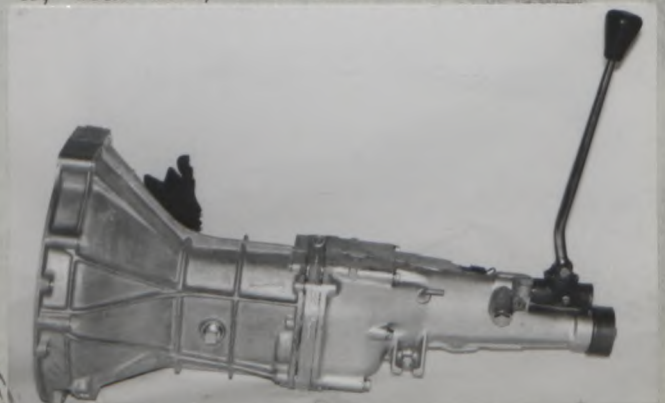
GEAR BOX (photograph H)

270. Manual type make	NISSAN	Method of operation	Mechanical
271. No. of gear-box ratios forward	5		
272. Synchronized forward ratios	1,2,3,4 & 5.		
273. Location of gear-shift	Floor		

277	Manual	
	Ratio	No. teeth
1	3.76	$\frac{29 \times 32}{19 \times 13}$
2	2.37	$\frac{29 \times 28}{19 \times 18}$
3	1.66	$\frac{29 \times 25}{19 \times 23}$
4	1.29	$\frac{29 \times 22}{19 \times 26}$
5	1.00	
Reverse	4.04	$\frac{29 \times 15 \times 19}{19 \times 13 \times 17}$

Photograph

H, Gear-box, view from side



Photograph

Q, Exhaust manifold



4DOOR SEDAN MODEL

CAPACITIES AND DIMENSIONS

9. Weight, total weight of the car with normal equipment, water, oil and spare wheel but without fuel nor repair tools:

* SINGL CARBURETOR ENGINE MODEL	730	kg	1,609	lbs
** TWIN CARBURETOR ENGINE MODEL	730	kg	1,609	lbs

CHASSIS AND COACHWORK (photographs A and B)

24. Number of doors 4 Material(s) Steel
30. Material(s) of rear-door windows Glass

Photograph

A, 3/4 view of car from front



B, 3/4 view of car from rear



B, 3/4 view of car from rear



COUPE MODEL KB(L)210

CAPACITIES AND DIMENSIONS

- 6. Overall height of the car 135.0 cm
- 7. Capacity of fuel tank 43 ltrs 11.4 Gallon US
- 9. Weight, total weight of the car with normal equipment, water, oil and spare wheel but without fuel nor repair tools:
 - * SINGL CARBURATOR ENGINE MODEL 730 kg 1,609 lbs
 - ** TWIN CARBURATOR ENGINE MODEL 730 kg 1,609 lbs

CHASSIS AND DIMENSIONS (photograph A and B)

- 24. Number of doors 2 Material(s) Steel
- 32. Material(s) of rear-quarter light Glass

Photograph

A, 3/4 view of car from front



A, 3/4 view of car from front



B, 3/4 view of car from rear



B, 3/4 view of car from rear



B, 3/4 view of car from rear



E, Rear axle complete





JAPAN AUTOMOBILE FEDERATION

社団法人 日本自動車連盟

J.A.F 公認番号 T-215
発効年月日 1974年 2月 28日

F.I.A. Homol. No. 5567

1/IV



FEDERATION INTERNATIONALE DE L'AUTOMOBILE

Form of recognition accordance with Appendix J to the International Sporting Code.

国際スポーツ法典付則J項及びJAF国内競技車両規則に従った公認書式。

Make NISSAN MOTOR CO., LTD. Model B(L)210 DATSUN SUNNY 1900
 製造会社名 型式及び通称名
 Modification's application starts with serial No. chassis 適用シャーシー型式番号 B(L)210-000001
 engine 適用エンジン型式番号 A12-000001
 Application of this amendment started the FEB. 1973
 適用年月日
 Commercial denomination after application of modifications
 The modifications are to be considered as: Variant / ~~no modification of the type~~
 変型 / ~~型式変更~~
 Date amendment is valid from 1.6.76 List

Description of amendment 内容

The following items have been added for group 1.

TWIN CARBURETOR ENGINE MODEL (photographs J and K)

CAPACITIES AND DIMENSIONS

9. Weight, total weight of the car with normal equipment, water, oil and spare wheel but without fuel and repair tools:

* 2DOOR SEDAN MODEL	715 kg	1,576 lbs
** 4DOOR SEDAN MODEL	700 kg	1,609 lbs
*** COUPE MODEL	730 kg	1,609 lbs

INLET (See page 3)

187. Valves open at	B.T.D.C.	20° ± 3°
188. Valves close at	A.B.D.C.	56° ± 3°

EXHAUST (See page 3)

202. Valves open at	B.B.D.C.	58° ± 3°
203. Valves close at	A.T.D.C.	18° ± 3°

Stamp and signature of the JAF

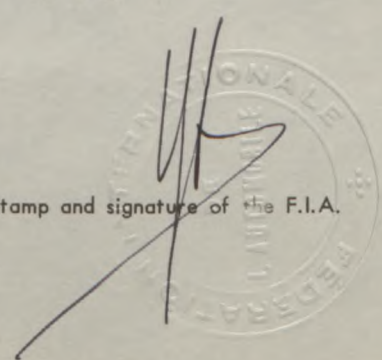
JAF公認印及び署名

難波靖治

Yasuharu Nanba



Stamp and signature of the F.I.A.



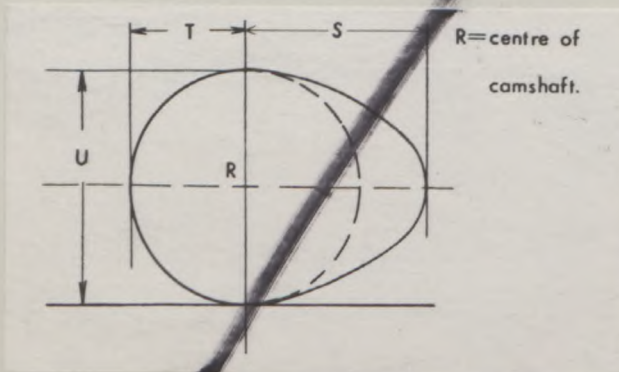
CARBURETION (photograph N)

- 210. Number of carburettors fitted 2
- 211. Type Side-draft
- 212. Make HITACHI
- 213. Model HJE 38W
- 214. Number of mixture passages per caretter 1
- 215. Flange hole diameter of exit port(s) of carburetor 38 mm
- 216. Minimum dimensions of mixture pasage(s) with piston at max. height (example:SU) 29 mm

ENGINE AND CAR PERFORMANCES (as declared by manufacturer in cataloge)

- 250. Max. engine output 80 ps (type of horsepower: JIS) at 6,000 rpm
- 251. Maximum rpm 6,800 output at that figure 77 ps
- 252. Maximum torque 9.8 kg-m at 4,400 rpm
- 253. Maximum speed of the car 160 km/hour

255. Cam profile



Inlet cam

- S = 20.9 mm 0.82 inches
- T = 15.0 mm 0.59 inches
- U = 30.1 mm 1.18 inches

Exhaust

- S = 20.9 mm 0.82 inches
- T = 15.0 mm 0.59 inches
- U = 30.1 mm 1.18 inches



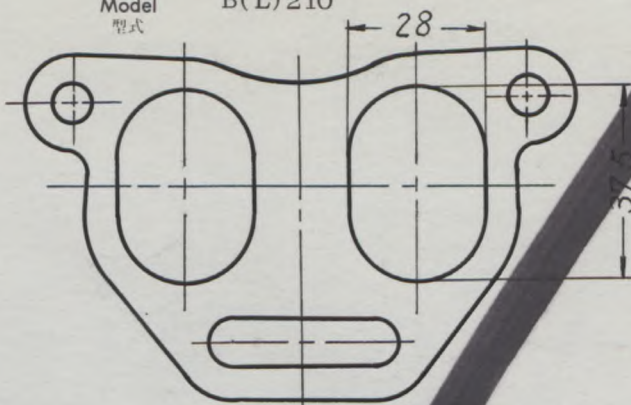
Make NISSAN

Model B(L) 210
型式

J.A.F. No. T-215
F.I. No. 5567 1/IV

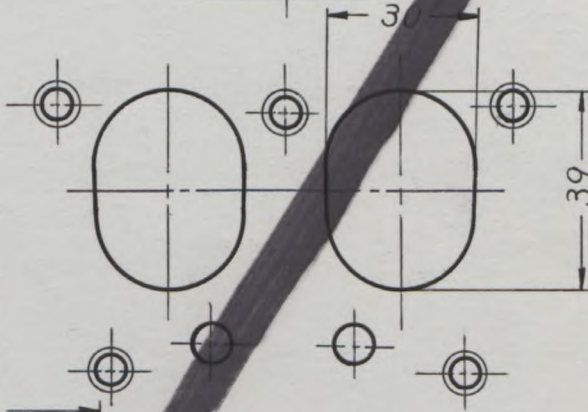
Drawing inlet manifold ports, side of cylinder-head housing scale or dimensions and manufacturing tolerance.

吸気マニホールドのポート (シリンダーヘッド側)



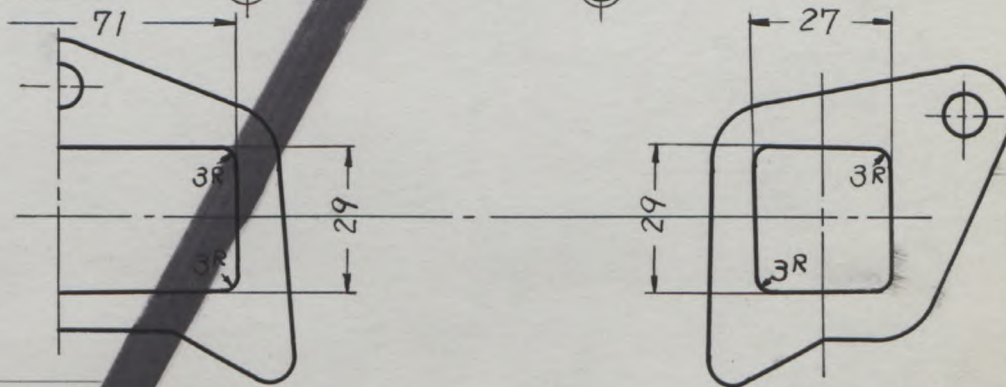
Drawing of entrance to inlet port of cylinder-head housing scale or dimensions and manufacturing tolerance.

シリンダーヘッドの吸気ポート (吸気マニホールド側)



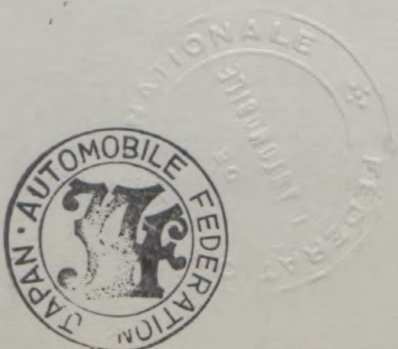
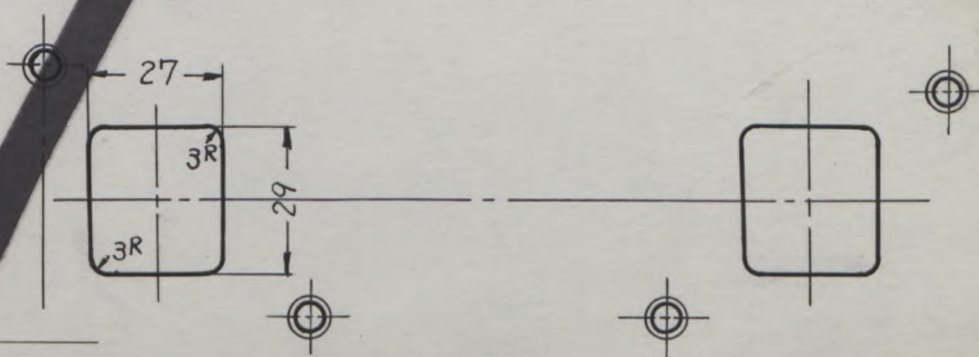
Drawing exhaust manifold ports, side of cylinder-head housing scale or dimensions and manufacturing tolerance.

排気マニホールドのポート (シリンダーヘッド側)



Drawing of exit to exhaust port of cylinderhead housing. Indicate scale or dimensions and manufacturing tolerance.

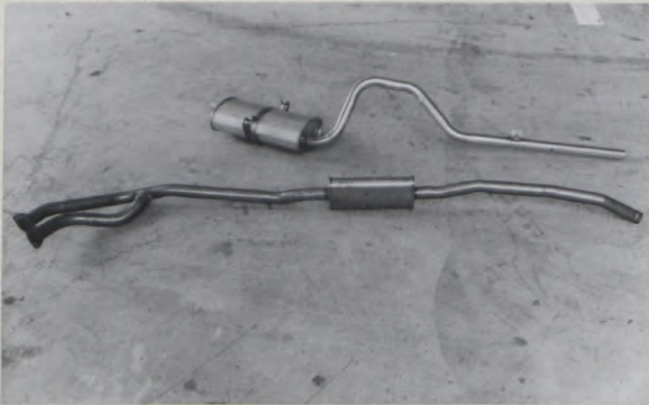
シリンダーヘッドの排気ポート (排気マニホールド側)



Unit: mm
Tolerances
製造公差

Photograph

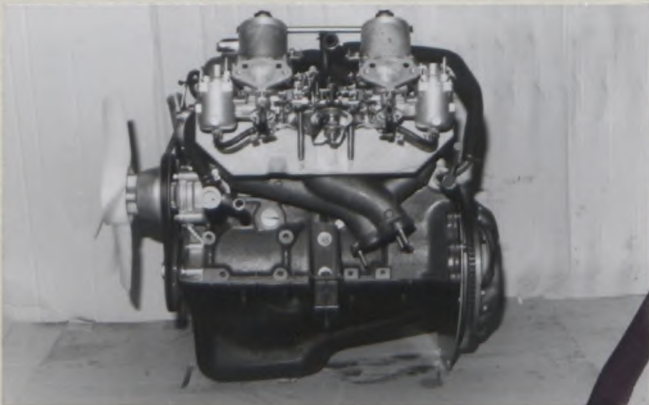
I, Silencer + exhaust pipes after exhaust manifold



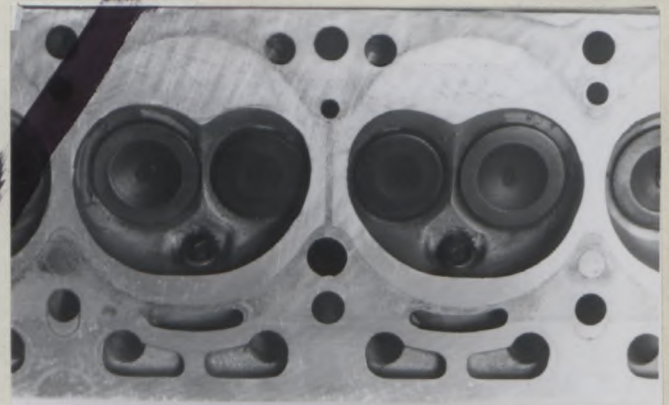
J, Engine unit out of car, from right.



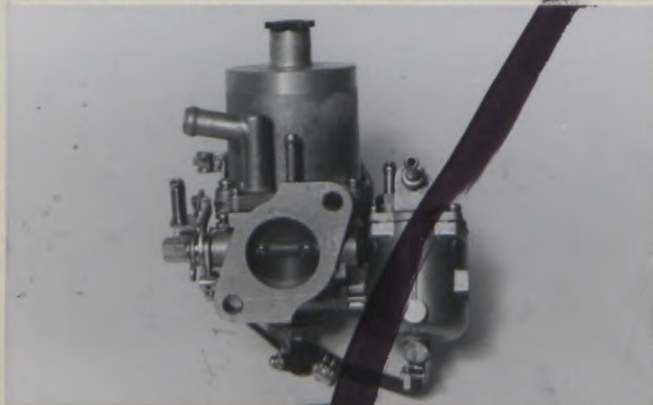
K, Engine unit out of car, from left.



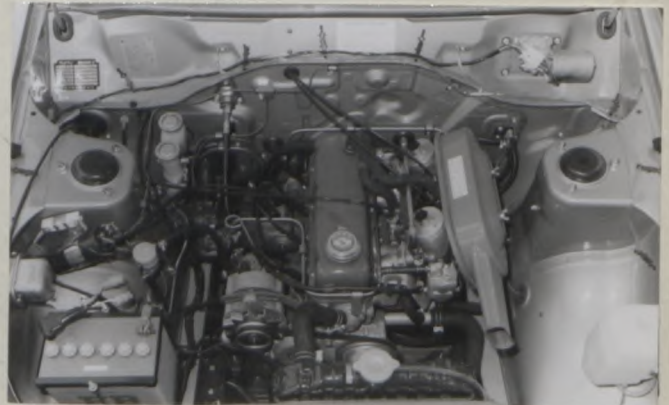
L, Combustion chamber



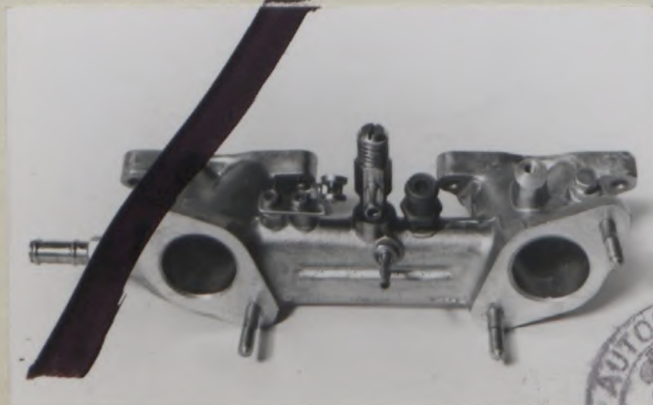
N, Carburettor (view from side of manifold)



O, Engine in car



P, Inlet manifold



Q, Exhaust manifold



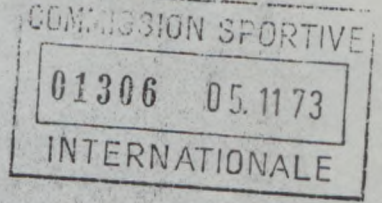


JAPAN AUTOMOBILE FEDERATION

社団法人 日本自動車連盟

J.A.F. 公認番号 T-215 V-2
発効年月日 1973年9月30日
F. I. A. Homol. No. [REDACTED]

5567 2/2V



FEDERATION INTERNATIONALE DE L'AUTOMOBILE

Form of recognition accordance with Appendix J to the International Sporting Code.

国際スポーツ法典付則J項及びJAF国内競技車両規則に従った公認書式。

Make NISSAN MOTOR CO., LTD. **Model** B(L)210 DATSUN SUNNY 1200
 製造会社名 型名及び通称名
Modification's application starts with serial No. chassis 適用シャーシー型式番号 B(L)210-000001
 engine 適用エンジン型式番号 A12-000001
Application of this amendment started the MAR. 1973
 適用年月日
Commercial denomination after application of modifications
 The modifications are to be considered as: Variant / ~~normal evolution of the type~~
 変型 / 改良
Date amendment is valid from 1.4.74 List

Description of amendment 内容

OPTIONAL EQUIPMENT

VALID FOR GROUP 2 ONLY

OVER FENDER

Front over fender
Parts No. R/H 63860-H5720
L/H 63861-H5720

"valable en Groupe 2 uniquement"
"valid for Group 2 only"

Photograph



Stamp and signature of the JAF

JAF 公認印及び署名

難波靖治

Yasuharu Nanba



Stamp and signature of the F.I.A.

Make NISSAN

Model B(L)210
型式

J.A.F.公認番号 T-215 V-2

F.I.A. Rec. No. [REDACTED]

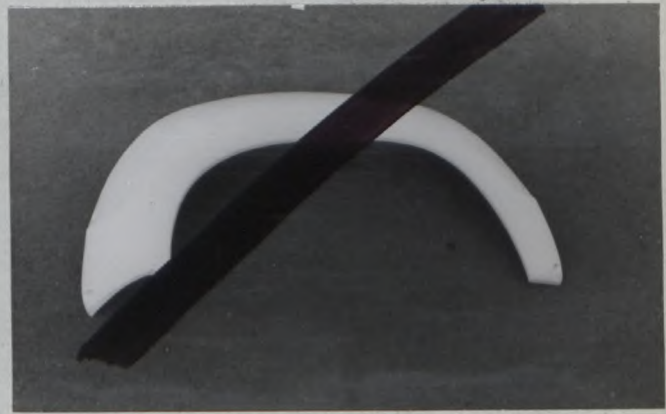
Rear over fender

Parts No. R/H 63862-H5720

L/H 63863-H5720

5567 2/20

Photograph



AIR SPOILER

Rear air spoiler

Parts No. 98100-H5720

Photograph



"valable en Groupe 2 uniquement"
"valid for Group 2 only"





JAPAN AUTOMOBILE FEDERATION

社団法人 日本自動車連盟

J.A.F. 公認番号

T-215 V-3

発効年月日

1974年10月31日

F.I.A. Homol. No 5567

3/3V

FEDERATION INTERNATIONALE DE L'AUTOMOBILE

Form of recognition accordance with Appendix J to the International Sporting Code.

国際スポーツ法典付則J項及びJAF国内競技車両規則に従った公認書式。

Make NISSAN MOTOR CO., LTD.

製造会社名

Model

型式及び通称名

B(L)210

DATSUN SUNNY 1200

Modification's application starts with serial

No.

chassis

適用シャーシー型式番号

B(L)210-000001

engine

適用エンジン型式

A12

Application of this amendment started the

適用年月日

JUN. 1974

Commercial denomination after application of modifications

The modifications are to be considered as: Variant / normal evolution of this type

変型 / 正常進歩

Date amendment is valid from

1.1.75 List

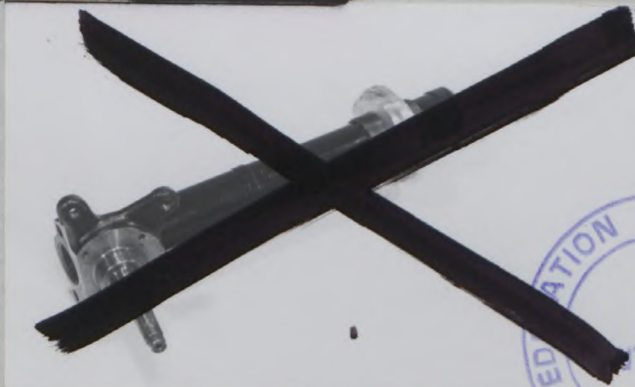
Description of amendment 内容

OPTIONAL EQUIPMENT

VALID FOR GROUP 2 ONLY

~~CONDENSION STRUT~~

KNUCKLE ARM



~~... with a larger spindle.~~

Modify dimension.

Parts No. R/H 40052-H5020

L/H 40053-H5020

Stamp and signature of the JAF

JAF公認印及び署名

難波靖彦

Yasuharu Nanba



Stamp and signature of the F.I.A.



HEAVY DUTY REAR AXLE SHAFT



Parts No. 38164-G1000

HEAVY DUTY REAR AXLE CASE



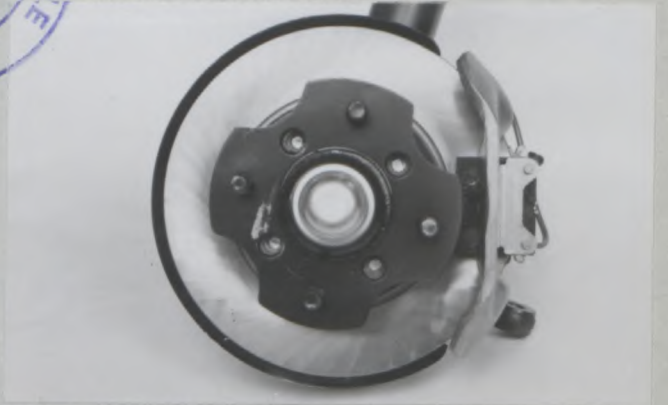
Parts No. 43010-H5901

ALTERNATIVE FINAL DRIVE



Parts No. ~~38300-N5100~~

ALTERNATIVE FRONT DISC BRAKE



Parts No.
 Brake rotor 40206-A1100
 Brake caliper R/H 41000-S0100
 L/H 41010-S0100



FRONT DISC BRAKE

93. Number of cylinders per wheel	1	
94. Bore of wheel cylinder	51.1	mm
100. Outside diameter	232	mm
101. Thickness of disc	10	mm
102. Length of brake linings	63	mm
103. Width of brake linings	41	mm
104. Number of pads per brake	2	
105. Total area per brake	5,000	mm ²



JAPAN AUTOMOBILE FEDERATION

社団 日本自動車連盟
法人

J·A·F公認番号 T-215V-4
発効年月日 1975年6月30日
F. I. A. Homol. No 5567

4/4V

FEDERATION INTERNATIONALE DE L'AUTOMOBILE

Form of recognition accordance with
Appendix J to the International Sporting Code.

国際スポーツ法典付則J項及びJAF国内競技車両規則に従った公認書式。

Make NISSAN MOTOR CO., LTD. 製造会社名	Model B(L)210 型式及び通称名	DATSUN SUNNY 1200
Modification's application starts with serial	No. chassis engine 適用シャーシー型式番号 適用エンジン型式番号	B(L)210-000001 A12
Application of this amendment started the 適用年月日	JAN. 1975	
Commercial denomination after application of modifications	B(L)210	KB(L)210

The modifications are to be considered as: Variant / ~~normal evolution of the type~~
変型 / ~~正常進化~~

Date amendment is valid from 1.10.75 List

Description of amendment 内容

The following items have been added for group 1.

WHEELS

- | | | | |
|-------------------------------------|---------------|------|------------|
| 50. Type | Pressed steel | | |
| 51. Weight(per wheel, without tyre) | 6.9 | kg | |
| 52. Method of attachment | 4 | Nuts | |
| 53. Rim diameter | 330 | mm | 13 inches |
| 54. Rim width | 114 | mm | 4.5 inches |

Photograph
Road wheel.



Stamp and signature of the JAF

JAF公認印及び署名

難波靖治



Yasuharu Nanba

Stamp and signature of the F.I.A.

Make NISSAN

Model B(L)210
型式

J.A.F.公認番号 T-215V-4
F.I.A. Rec. No. 5567

4/4V

FRONT DISC BRAKES

93. Number of cylinders per wheel	1	
94. Bore of wheel cylinder(s)	51.1	mm
100. Outside diameter	232	mm
101. Thickness of disc	10	mm
102. Length of brake linings	63	mm
103. Width of brake linings	41	mm
104. Number of pads per brake	2	
105. Total area per brake	5,000	mm ²

Photograph

F, Front brake, disc with caliper(s)





JAPAN AUTOMOBILE FEDERATION

社団法人 日本自動車連盟

J.A.F公認番号 T-215V-5
発効年月日 昭和52年1月31日
F.I.A. Homol. No 5567/ S/SV

FEDERATION INTERNATIONALE DE L'AUTOMOBILE

Form of recognition accordance with
Appendix J to the International Sporting Code.

国際スポーツ法典付則J項及びJAF国内競技車両規則に従った公認書式。

Make	NISSAN MOTOR CO., LTD.	Model	B(L)210	DATSUN SUNNY 1200
製造会社名		型式及び通称名		
Modification's application starts with serial		No. chassis	適用シャーシー型式番号	B(L)210
		engine	適用エンジン型式	A12
Application of this amendment started the 適用年月日		OCT, 1976		
Commercial denomination after application of modifications		B(L)211		KB(L)211
The modifications are to be considered as:	Variant / normal evolution of the type 変型 / 正常進化			
Date amendment is valid from		1.4.77	List	

Description of amendment 内容

The following items have been added for group 1.

The changes of commercial denomination and serial number

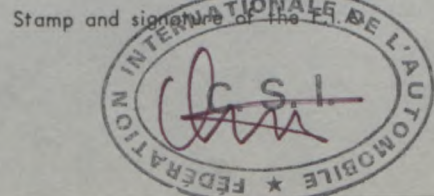
The production cars will start from No. B(L)211-000001 for chassis have been added.

Stamp and signature of the JAF

JAF公認印及び署名

難波靖治

Yasuharu Nanba





JAPAN AUTOMOBILE FEDERATION

社団法人 日本自動車連盟

J.A.F公認番号 T-215V-6
発効年月日 昭和52年2月28日
F.I.A. Homol. No 5567 616V

FEDERATION INTERNATIONALE DE L'AUTOMOBILE

Form of recognition accordance with Appendix J to the International Sporting Code.

国際スポーツ法典付則J項及びJAF国内競技車両規則に従った公認書式。

Make NISSAN MOTOR CO., LTD.
Model B(L)210 DATSUN SUNNY 1200
Modification's application starts with serial No. chassis 適用シャーシー型式番号 B(L)210
engine 適用エンジン型式番号 A12
Application of this amendment started the JUN, 1976.
Commercial denomination after application of modifications B(L)210, KB(L)210, B(L)211, KB(L)211.
The modifications are to be considered as: Variant / 変型
Date amendment is valid from 1.7.77 List

Description of amendment 内容

OPTIONAL EQUIPMENT

VALID FOR GROUP 2 ONLY

NOTE: The item number in the brackets is according to the old recognition form.

GEAR-BOX

(This type has been recognized at F.I.A. No. 5567(Page 17) already and the following ratios have been added.)

96. (277)

Table with 3 columns: Gear, Ratio, No. teeth. Rows include gears 1-5 and reverse with their respective ratios and tooth counts.



Stamp and signature of the JAF

JAF公認印及び署名

難波靖治

Yasuharu Nanba



Stamp and signature of the F.I.A.

Signature

会社名
Make NISSAN

型式
Model B(L)210

FIA Rec. No. 5567

6/6V

FINAL DRIVE

H150 type (This type has been recognized at F.I.A. No. 5567 already and the following ratios have been added.)

103. (293) Number of teeth	41/13, 37/11, 39/11, 37/10, 35/9, 35/8, 37/8, 39/8, 41/8,
104. (293) Ratio	3.15 3.36 3.55 3.70 3.89 4.38 4.63 4.88 5.13

H165 type (This type has been recognized at F.I.A. No. 5567/3/3V already and the following ratios have been added.)

103. (293) Number of teeth	41/13, 37/11, 39/11, 37/10, 35/9, 37/9 35/8 37/8 39/8 41/8,
104. (293) Ratio	3.15 3.36 3.55 3.70 3.89 4.11 4.38 4.63 4.88 5.13





JAPAN AUTOMOBILE FEDERATION

社団法人 日本自動車連盟

J.A.F 公認番号

T-2157-7

発効年月日

昭和52年9月30日

F.I.A. Homol. No

5567/

717J

FEDERATION INTERNATIONALE DE L'AUTOMOBILE

Form of recognition accordance with Appendix J to the International Sporting Code.

国際スポーツ法典付則J項及びJAF国内競技車両規則に従った公認書式。

Make NISSAN MOTOR CO., LTD. Model B(L)210 DATSUN SUNNY 1200
 製造会社名 型式及び通称名
 Modification's application starts with serial No. chassis 適用シャーシー型式番号 B(L)210
 engine 適用エンジン型式 A12
 Application of this amendment started the AUG, 1976.
 適用年月日
 Commercial denomination after application of modifications B(L)210, KB(L)210, B(L)211, KB(L)211,
 The modifications are to be considered as: Variant / normal evolution of the type
 変型 / 改良
 Date amendment is valid from -1 JAN 1978 List

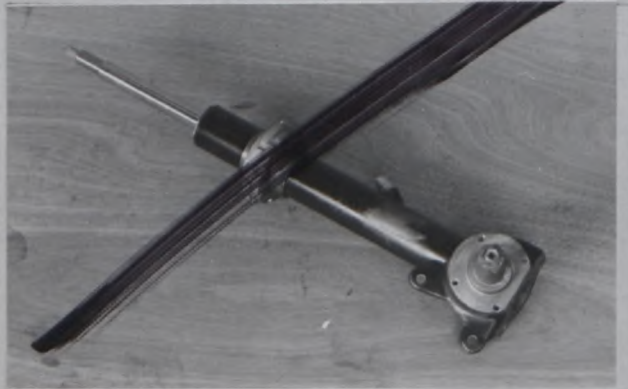
Description of amendment 内容

VALID FOR GROUP 2 ONLY

OPTIONAL EQUIPMENT

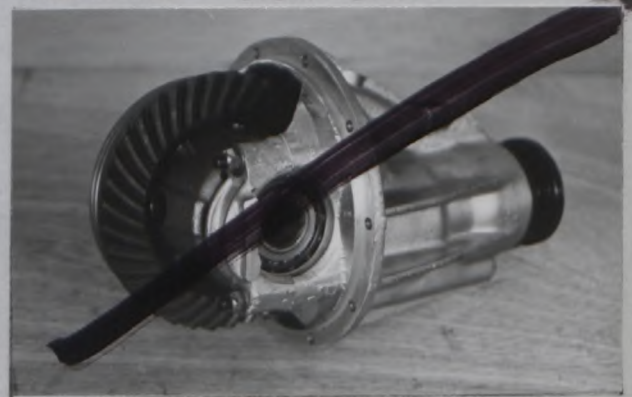
FRONT SUSPENSION STRUT

Adjustable type and modifying spindle.
 Parts No. R/H 54302-H5020
 L/H 54303-H5020



ALTERNATIVE FINAL DRIVE

Parts No. 38300-N5100



"valable en Groupe 2 uniquement"
"valid for Group 2 only"

Stamp and signature of the JAF

JAF公認印及び署名

難波靖治

Yasuharu Nanba

Stamp and signature of the F.I.A.



Signature of the F.I.A. official

会社名
Make NISSAN

型式
Model B(L) 210

FIA Rec. No. 5567/ 717V

HEAVY DUTY REAR AXLE SHAFT

Parts No. 38164-G1000



HEAVY DUTY REAR AXLE CASE

Parts No. 43010-H5901



FRONT DISC BRAKE

Parts No.

Brake caliper R/H 41000-A1280

Brake caliper L/H 41010-A1280

Disc brake rotor 40206-A7600



"valable en Groupe 2 uniquement"
"valid for Group-2 only"

