

1249



CHRYSLER CORPORATION

Name of Manufacturer - Chrysler-Plymouth Div., Chrysler Corporation
Name of Model - Plymouth-Valiant VV2
Manufacturers Reference
No. of Application - VV2



We certify that in excess of 1,000 cars identical with the basic specification stated in this application were completed on November 1, 1963. Production commenced on October 15, 1963. Cars conforming to this specification may be identified by Chassis Nos. 114xxxxxxx, 134xxxxxxx, 144xxxxxxx, 154xxxxxxx, 174xxxxxxx. Engine Nos. V-273xxxxxx

Name of Company CHRYSLER CORPORATION

Division Chrysler-Plymouth Division

By J. E. Charipar
J. E. CHARIPAR

Title Director - Turbine & Special Cars

By A. W. Steckling
A. W. STECKLING

Title Mgr., Divisional Car Engineering Services

AUTOMOBILE COMPETITION COMMITTEE
FOR THE UNITED STATES, FIA, INC.
107 EAST 32ND STREET
NEW YORK 16, N. Y.

George C. Rand, Sec'y.

P. O. BOX 1919, DETROIT 31, MICHIGAN

NOV 1 1963

THE AUTOMOBILE COMPETITION COMMITTEE
FOR THE UNITED STATES, FIA INC.
515 MADISON AVENUE
NEW YORK 22, N. Y.

TEL: Eldorado 5-C900

CABLE: ACCUSFIA NEW YORK

FEDERATION INTERNATIONALE DE L'AUTOMOBILE

Form of Recognition in accordance with Appendix J to the International Sporting Code.

Manufacturers Reference No. for

Application VV2

F.I.A. Recognition No. 1249

Manufacturer Chrysler-Plymouth Division, Chrysler Corporation

Model Plymouth-Valiant VV2 Year of Manufacture 1963-1964

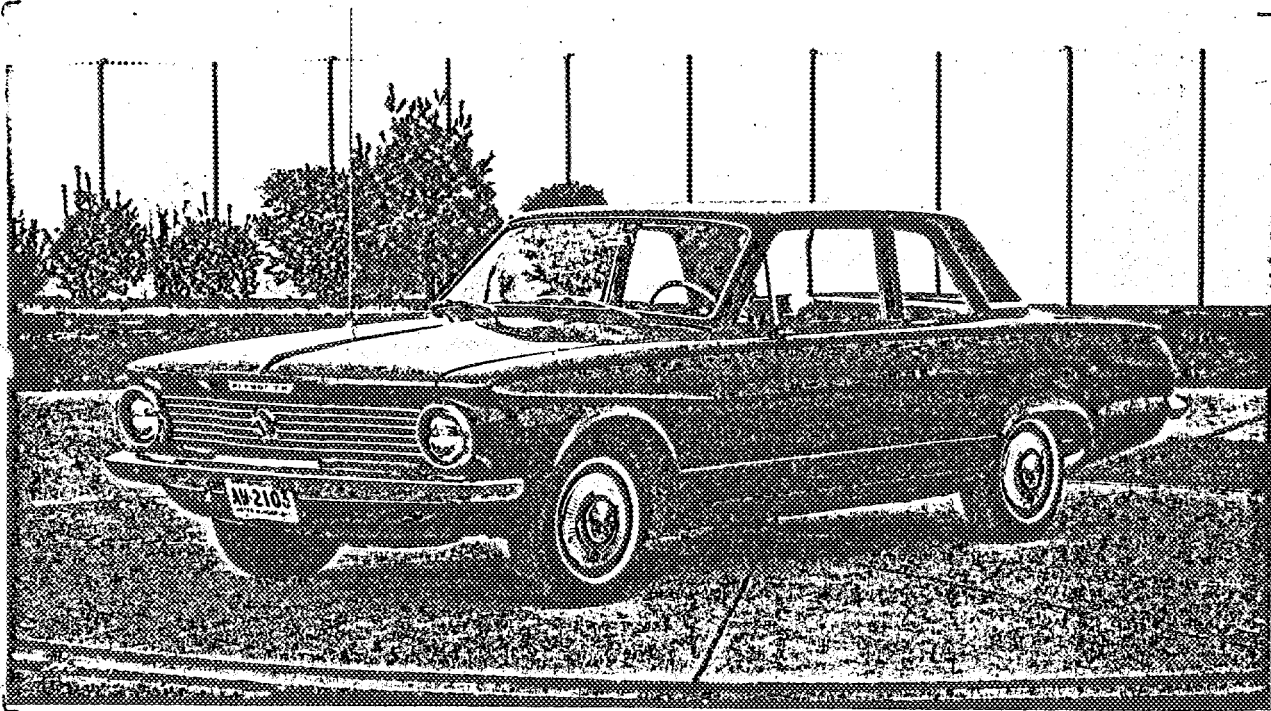
Serial No. of Chassis starts with 114; 134; 144; 154; 174

Engine starts with V-273

Type of Bodywork 2-Door Sedan

Recognition is valid from November 4, 1963 In Category Touring X

 November 4th, 1963 or Grand Touring



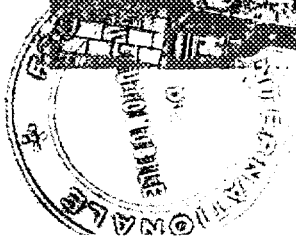
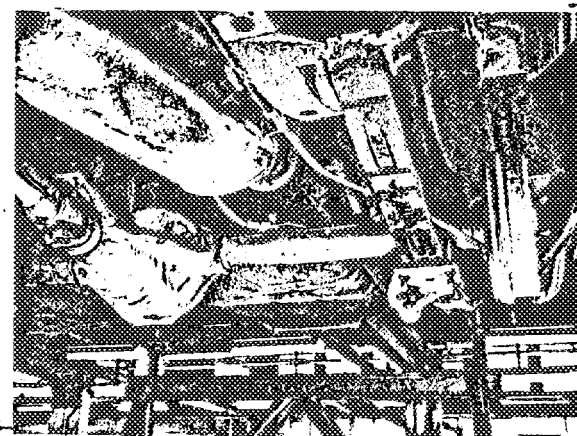
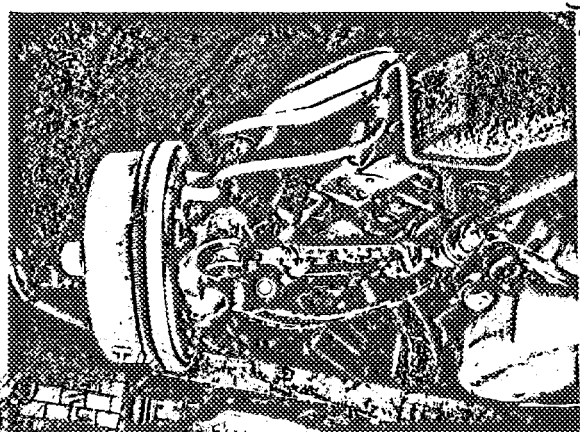
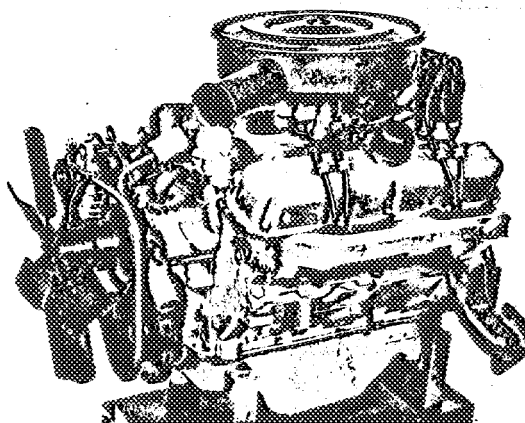
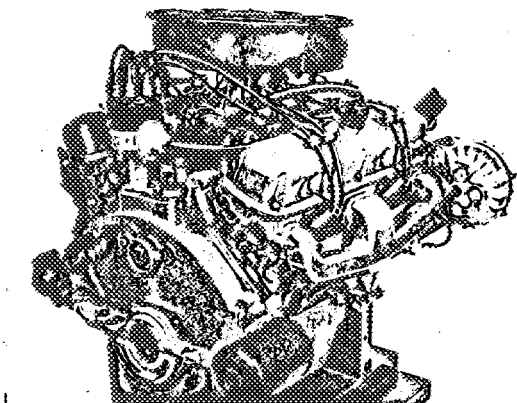
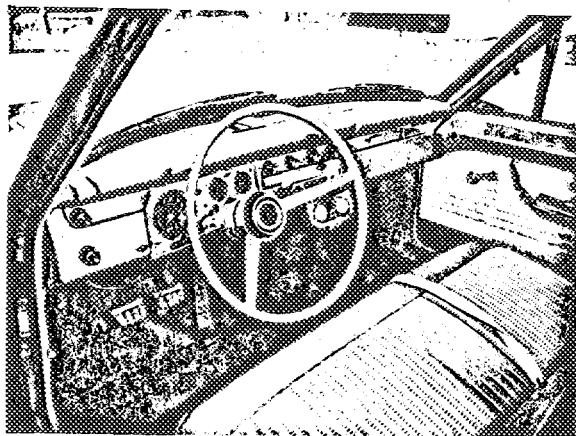
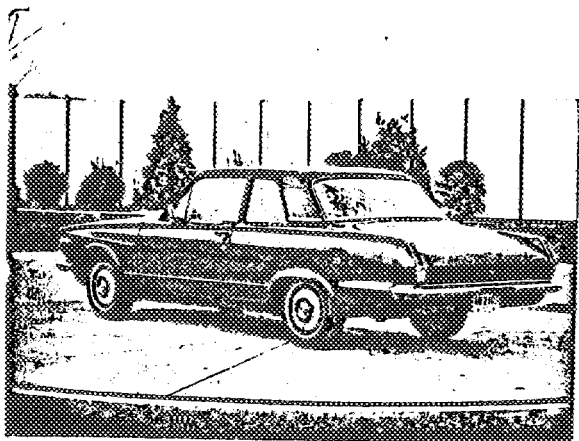
Stamp of ACCUSFIA, INC.
to be affixed here.

Signed George C. Oland
Sec'y

NOV 1 1963

General description of car: (specifying materials of Bodywork) The Valiant is offered in a low line V-100, high line V-200 and sport line Signet models. Two-door hardtop and sedan, four-door sedan, station wagon and convertible body styles are available. The three price lines differ in degree of exterior ornamentation and interior trim style and design. All body structural and outer skin components are of cold rolled sheet steel. Grille and grille frame are of aluminum. Stainless steel and die castings are utilized for other decorative items and embellishments. The convertible top is vinyl-coated fabric with a clear plastic window. Laminated safety and tempered sheet glass is used for windshield, side and rear windows.

Photographs to be affixed below:



ENGINE

No. of cylinders 8 in line
in V x
opposed

Cycle 4 Firing order 18436572

Capacity 4340 c.c. Bore 90.6 m.m. Stroke 84.1 m.m.

Maximum rebore 1 mm Resultant capacity 4430 c.c.

Material of cylinder block cast iron Material of sleeves, if
fitted none

Distance from crankshaft center line to top
face of block at center line of cylinders 243.7/244.0 m.m.

Material of cylinder head cast iron Volume of one combustion
chamber 61.3/64.3 c.c.

Compression ratio 8.8:1

Material of piston aluminum No. of piston rings 3

Distance from wrist pin center line to highest point of piston crown 45.4/45.5 m.m.

Bearings { Crankshaft main bearings: Type Rabbit on steel Dia. 63.5 m.m.
{ Connecting rod big end: Type Bimetal grid Dia. 54.1 m.m.

Weights { Flywheel 9.10 kg.
{ Crankshaft 25.7 kg.
{ Connecting rod .73 kg.
{ Piston with rings .59 kg.
{ Wrist pin .21 kg.

No. of valves per cylinder 2 Method of valve operation pushrod

No. of camshafts 1 Location of camshafts Cylinder block

Type of camshaft drive chain and sprocket

Diameter of valves: Inlet 45.2 m.m. Exhaust 38.1 m.m.

Diameter of port
at valve seat: Inlet 42.3 m.m. Exhaust 35.6 m.m.

Tappet clearance for
checking timing: Inlet .33 Hot m.m. Exhaust .53 Hot m.m.

Valves open: Inlet 14 BTC Exhaust 58 BBC

Valves close: Inlet 46 ABC Exhaust 2 ATC

Maximum valve lift: Inlet 10.0 m.m. Exhaust 10.3 m.m.

Degrees of crankshaft rotation from zero to -

Maximum lift: Inlet 120 Exhaust 120

3/4 Maximum lift: Inlet 70 Exhaust 70

Valve springs: Inlet Exhaust

Type Coil Coil

No. per valve 1 1

Carburetor: Type Down draft No. fitted 1
(up or down draft, horizontal)

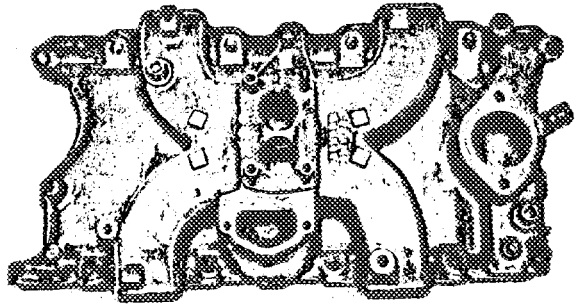
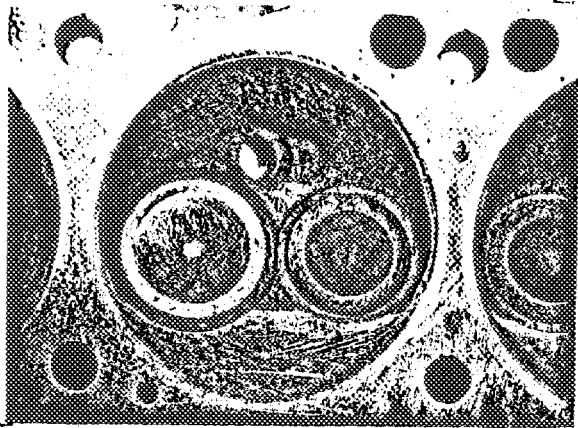
Make Carter Model BED 3767S or BBD 3768S

Intake hole diameter 2 x 36.6 m.m. Choke diameter 2 x 27 m.m.

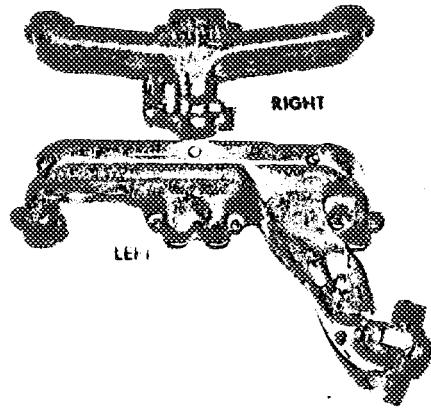
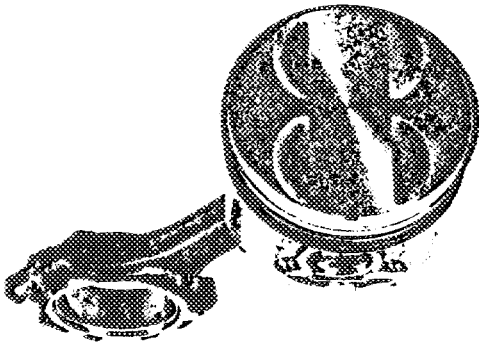
Main jet identification No. 120 - 210S



Air filter: Type Paper element No. fitted one
 Inlet manifold:
 Diameter of flange hole at carburetor 36.6 m.m.
 Diameter of flange hole at port 48.0 x 22.6 m.m.



Exhaust manifold:
 Diameter of flange hole at port 39.8 x 27.9 ends and 68.6 x 39.9 center m.m.
 Diameter of flange hole at connection to muffler inlet pipe Rt., 44.7, Lt., 41.1 m.m.



ENGINE ACCESSORIES

Make of fuel pump Carter No. fitted One
 Method of operation Mechanical

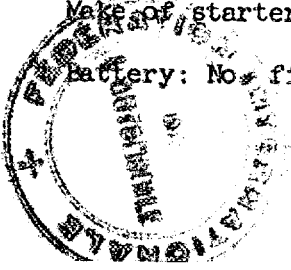
Type of ignition system Coil coil or magneto
 Make of ignition Chrysler Model 2444448 and 2444449
 Method of advance and retard Centrifugal & Vacuum

Make of ignition coil Essex & Prestolite Model 2444241 or 2444242
 No. of ignition coils one Voltage 12

Make of ~~generator~~ Alternator Chrysler Model 2098835
 Voltage of generator 13.7 to 14.3 C70° F Maximum output 30 amps.

Make of starter motor Chrysler Model 2095150

Battery: No. fitted One Voltage 12 Capacity 48 amp. hour



TRANSMISSION

Make of clutch Auburn Type Dry Plate
 Diameter of clutch plate 24.1 cm No. of plates one
 Method of operating clutch mechanical
 Make of gearbox Chrysler Type Syncho-mesh
 No. of gearbox ratios 4 forward and 1 reverse
 Method of operating gearshift manual
 Location of gearshift on floor
 Is overdrive fitted? no
 Method of controlling overdrive, if fitted --

Speed	GEARBOX RATIOS		ALTERNATIVE RATIOS					
	Ratio	No. of Teeth	Ratio	No. of Teeth	Ratio	No. of Teeth	Ratio	No. of Teeth
1st.	3.09	<u>22-33</u> <u>17-35</u>						
2nd.	1.92	<u>22-33</u> <u>25-32</u>						
3rd.	1.40	<u>22-33</u> <u>29-27</u>						
4th.	1.00	-						
5th.	-	-						
Reverse	3.00	<u>22-33</u> <u>11-22-34</u>						

Type of final drive Hotchkiss
 Type of differential Semi-Floating; Limited slip optional
 Final drive ratio 3.23 Alternatives 2.93, 3.55, 3.91
 No. of teeth 13-42 14-41 11-39 11-43
 Overdrive ratio, if fitted --

WHEELS

Type Pressed steel disc Weight 6.5 kg.
 Method of attachment Stud and nut
 Rim diameter 330 m.m. Rim width 140 m.m.
 Tire size: Front 178 x 330 Rear 178 x 330

BRAKES

Method of operation Hydraulic
 Is servo assistance fitted? Yes - Optional
 Type of servo, if fitted Vacuum actuated
 No. of hydraulic master cylinders 1 Bore 25.4 m.m.



	Front		Rear	
No. of wheel cylinders	One		One	
Bore of wheel cylinders	28.6	m.m.	20.7	m.m.
Inside diameter of brake drums	228	m.m.	228	m.m.
No. of shoes per brake	two		two	
Outside diameter of brake discs	--	m.m.	--	m.m.
No. of pads per brake	--		--	

Dimensions of brake linings per shoe or pad (if all shoes or pads in each brake are not of same dimensions, specify each)

	Front		Rear	
Length	195	m.m.	195	m.m.
Width	250	m.m.	250	m.m.
	63.5	m.m.	50.8	m.m.
Total area per brake	28,300	m.m. ²	22,600	m.m. ²

SUSPENSION

	Front		Rear
Type	Independent		Semi-elliptic
Type of spring	Torsion bar		Laminated leaf
Is stabiliser fitted?	yes		no
Type of shock absorber	telescopic		telescopic
No. of shock absorbers	two		two

STEERING

Type of steering gear	Recirculation ball & nut		
Turning circle of car	11.8		m., approx.
No. of turns of steering wheel from lock to lock	4.6		

CAPACITIES AND DIMENSIONS

Fuel tank	68.1	litres	Sump	4.7	litres
Radiator	16.1	litres	Overall length of car	473	cm.
Overall width of car	177	cm.	Overall height of car, unladen (with top up, if appropriate)	142	cm.
Distance from floor to top of windshield:			Highest point	104	cm.
			Lowest point	101	cm.

Width of windshield:

Maximum width	133	cm.	Minimum width	119	cm.
---------------	-----	-----	---------------	-----	-----

*Interior width of car 137 cm.

No. of seats 4

Track: Front 145 cm. Rear 142 cm.

Wheelbase 270 cm. Ground clearance 165 m.m.

Overall weight with water, oil and spare wheel, but without fuel 1177 kgs.

(To be measured at the immediate rear of the steering wheel, and the width quoted to be maintained in a vertical plane of not less than 25 cms.)



Additional information for cars fitted with two-cycle engines only:

System of cylinder scavenging _____
Type of lubrication _____

Size of inlet port:
Length measured around cylinder wall _____ m.m.
Height _____ m.m. Area _____ m.m.²

Size of exhaust port:
Length measured around cylinder wall _____ m.m.
Height _____ m.m. Area _____ m.m.²

Size of transfer port:
Length measured around cylinder wall _____ m.m.
Height _____ m.m. Area _____ m.m.²

Size of piston port:
Length measured around piston _____ m.m.
Height _____ m.m. Area _____ m.m.²

Method of pre-compression _____
Bore and stroke of pre-compression cylinder, if fitted _____ m.m.

Distance from top of cylinder block to lowest point of inlet port _____ m.m.
Distance from top of cylinder block to highest point of exhaust port _____ m.m.
Distance from top of cylinder block to highest point of transfer port _____ m.m.

Drawing of cylinder ports.

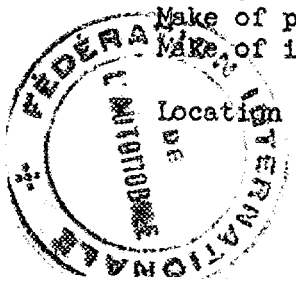
Supercharger, if fitted
Make _____
Type of drive _____

Model or Type No. _____
Ratio of drive _____

Fuel injection, if fitted
Make of pump _____
Make of injectors _____

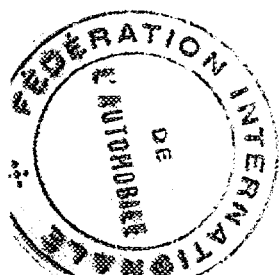
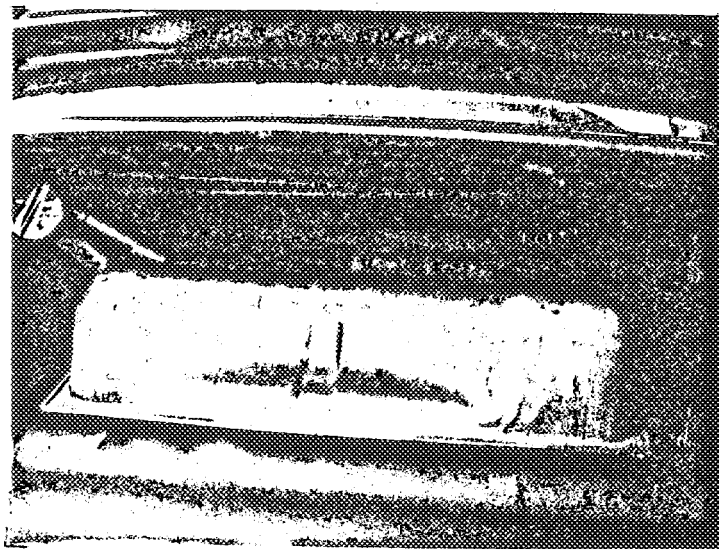
Model or Type No. _____
Model or Type No. _____

Location of injectors _____



Optional equipment affecting preceding information:-

1. Alternator - 40 Amps
2. 3-Speed Automatic Transmission
 - 1st gear - 2.45:1
 - 2nd gear - 1.45:1
 - 3rd gear - 1.00:1
 - Reverse - 2.20:1
3. 3-Speed Manual - Steering Column - mounted Gear Selector
 - 1st gear - 3.02:1
 - 2nd gear - 1.76:1
 - 3rd gear - 1.00:1
 - Reverse - 3.95:1
4. Steering - Recirculation Ball and Nut 3.5 turns L. to L.
Power Steering Optional
5. Heavy Duty Battery - 70 Ampere Hour
6. Optional Wheels 330 mm dia. X115 mm width
7. Heavy Duty Suspension Springs & Shock Absorbers - Rear Springs $5\frac{1}{2}$ Leaf
8. Auxillary Gas Tank - Trunk-mounted 49.2 L. Part # 2208462





Name of Manufacturer - Chrysler-Plymouth Div., Chrysler Corporation
Name of Model - Plymouth-Variant VV2
Manufacturers Reference
No. of Application - VV2

VARIANT (DISC BRAKE)

We certify that in excess of 1,000 cars identical with the basic specification stated in this application were completed on December 15, 1963. Production commenced on December 1, 1963. Cars conforming to this specification may be identified by Chassis Nos. 114xxxxxxx, 134xxxxxxx, 144xxxxxxx, 154xxxxxxx, 174xxxxxxx. Engine Nos. V-273xxxxxx

Name of Company CHRYSLER CORPORATION

Division Chrysler-Plymouth Division

By

J. E. Charipar
J. E. CHARIPAR

Title Director - Turbine & Special Cars

By

A. W. Steckling
A. W. STECKLING

Title Mgr., Divisional Car Engineering Service

P. O. BOX 1919, DETROIT 31, MICHIGAN

1963
NEW YORK 16, N. Y.

George Estlin
Secy.

Application for Variant to be attached to FIA Recognition Form No. 1249 / A / J

Mfg Chrysler-Plymouth Division, Chrysler Corporation

Model Plymouth-Valiant VV2 Year of Manufacture 1963-1964

Chassis starts with 114; 134; 144; 154; 174

Serial No. of _____ Engine starts with V-273

Type of Bodywork 2-Door Sedan

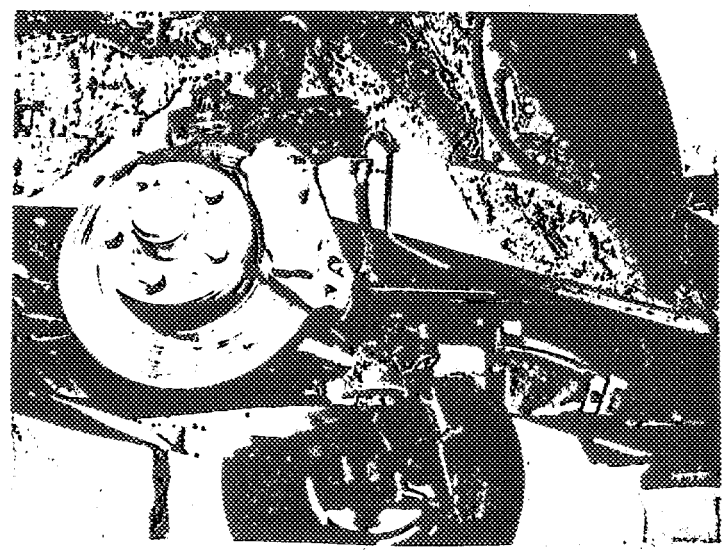
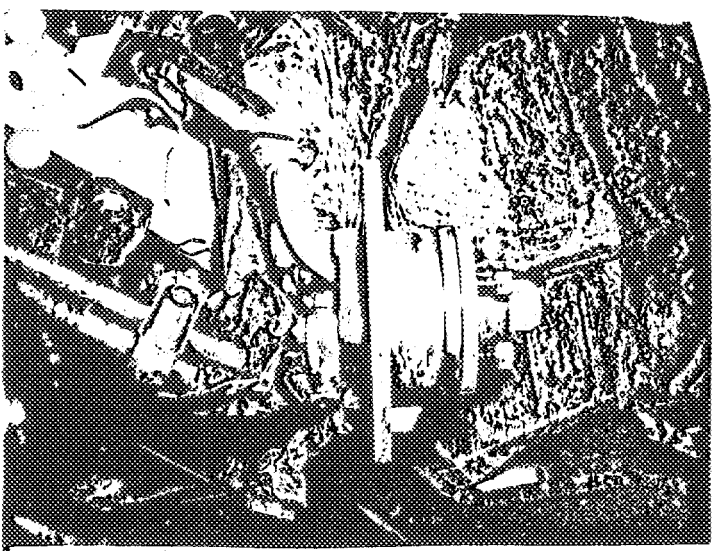
Recognition is valid from 13 JANV 1964 In Category Touring X

Variant concerns front disc brake package as follows:

Hydraulic Master Cylinder	28.6 m.m.
O.D. of brake disc	254.0 m.m.
No. of pads per brake	2
Dim. of brake pads	
	Length {
	Top 95.3 mm
	Bottom 73.6
	Width {
	50.8 mm
total brake area	8760 mm ²



FRONT SUSPENSION PHOTOS WITH DISC BRAKES



Kubusphond

*George C. Ola
Secy.*

Application for Variant to be attached to FIA Recognition Form No. 1249

Manufacturer Chrysler-Plymouth Division, Chrysler Corporation

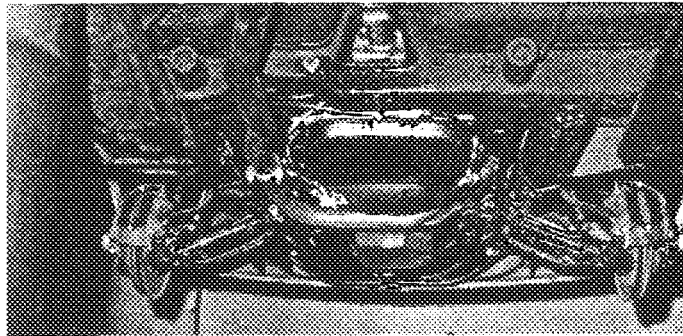
Model Valiant

Variant concerns the following parts:

Wheels: Pressed steel disc 355 mm dia. x 140 mm wide

Tires: 175 x 355 mm

Brakes: Kelsey-Hayes front disc, Hydraulic master cylinder 25.4 mm



Front Suspension with Kelsey-Hayes Disc Brakes

<u>Front (disc)</u>		<u>Rear (drum)</u>	
O.D. disc	283 mm	Wheel Cylinder	23.2+ .2 mm
No. pads/brake	2	Brake drum I.D.	254 +1.0 mm
		Shoes/brake	2
<u>Linings:</u>		<u>Length:</u>	
Length	122 mm	Primary	215 + 10 mm
Width	47 mm	Secondary	270 + 10 mm
		<u>Width:</u>	44.5+ 2 mm

Engine: H.D. Radiator 17 liters; H.D. Oil Sump 7 liters
H.D. Clutch 241 mm Borg & Beck single dry plate

Sport Camshaft

Valve Opens

Valve Closes

Max. Valve Lift

Inlet

34 BTC

74 ABDC

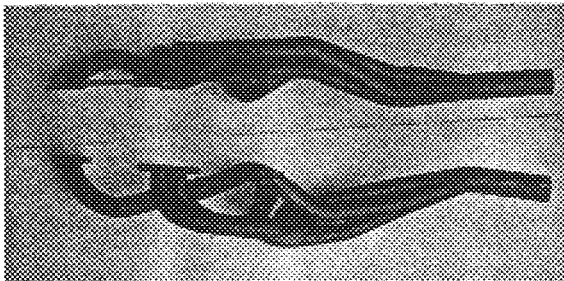
11.4 mm

Exhaust

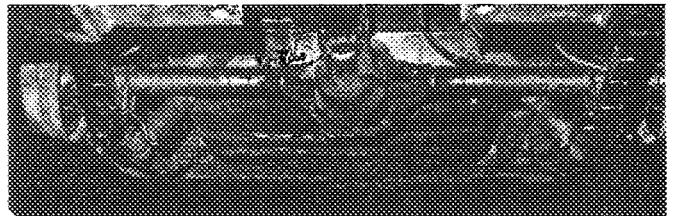
70 BBDC

34 ATC

11.6 mm



Exhaust manifolds of steel tubing



Suspension: Rear Suspension - additional rear axle control strut on each side.

Carroll
AUTOMOBILE COMPETITION COMMITTEE
FOR THE UNITED STATES, FIA, INC.
107 EAST 33rd STREET
NEW YORK 16, N. Y.



FEDERATION INTERNATIONALE
DE L'AUTOMOBILE

Homologation N°

1249

Groupe

Group **2 -Touring Cars**

02/02V

FICHE D'HOMOLOGATION POUR INFORMATIONS COMPLEMENTAIRES
HOMOLOGATION FORM FOR COMPLEMENTARY INFORMATION

Variant

Véhicule : Constructeur

Vehicle : Manufacturer

Chrysler

Modèle et type


Model and type

Plymouth Valiant VV2

Homologation valable à partir du

Homologation valid as from

01/01/1966

Article	Description
	<p data-bbox="252 882 911 913"><u>New bodywork from the 1966 model onwards:</u></p> 

Fédération Internationale de l'Automobile
2 chemin de Blandonnet
CH-1215 GENEVE 15
Tél.: 41 22 544 44 00
Fax Sport: 41 22 544 44 50

Marque
Make **CHRYSLER**

Modèle
Model **Plymouth Valiant VV2**

1249
02/02V

Article	Description
	 <p data-bbox="336 752 639 770"><i>Plymouth Valiant 100 2-Door Sedan in Bright Red</i></p> <p data-bbox="300 815 316 831">19</p> <h2 data-bbox="916 797 1158 846">Valiant 100</h2>
	
	<p data-bbox="842 1722 1251 1888"> Association Internationale de l'Automobile 2, chemin de Blandonnet CH-1215 GENEVE 15 Tél.: 41 22 544 44 00 Tél. Sport: 41 22 544 44 50 </p>