



F.I.A. Recognition No.

1610

Group II

ROYAL AUTOMOBILE CLUB

31, Belgrave Square, London, S.W.1

Form of recognition in accordance with appendix J to the International Sporting Code of the
FEDERATION INTERNATIONALE DE L'AUTOMOBILE

Cylinder-capacity 2994 cm.³ 182.7 in.³
 Manufacturer Reliant Motor Co. Ltd. Model Scimitar GTE
 Serial No. of chassis/body 450006 Manufacturer Reliant
 Serial No. of engine 71/3 Manufacturer Ford Motor Co. Ltd.
 Recognition is valid from 1/3/71 List 71/3

The manufacturing of the model described in this recognition form started on 1st November 1969 and the minimum production of 1000 identical cars, in accordance with the specifications of this form was reached on 31st October 1970.

Photograph A. 1/4 view of car from front



F.I.A. Stamp

R.A.C. Stamp

1870

NOTE 1.

All dimensions must be given in two measuring systems, see Note 3.

CAPACITIES AND DIMENSIONS

1. Wheelbase	2528 mm.	99.5	inches
2. Front track	1390 mm.	54.88	inches
3. Rear track	1333 mm.	52.5	inches

Measurement from underside of main chassis rails

See Note 2

FRONT	REAR
5.5 ins	5.5 ins
139.7 mm	139.7 mm



4. Overall length of the car	434.4	cm.	171	inches		
5. Overall width of the car	163.8	cm.	64.5	inches		
6. Overall height of the car	132.6	cm.	52	inches		
7. Capacity of fuel tank (reserve included)	77.28	ltrs.	20.42	gall. U.S.	17	gall. Imp.
8. Seating Capacity.	4					
9. Weight. Total weight of the car with normal equipment, water, oil, and spare wheel but without fuel or repair tools:	877.86	kg.	1935	lbs.	17.28	cwts.

NOTE 2.

Differences in track caused by the use of other wheels with different rim widths must be stated when recognition is requested for the wheels concerned. Specify ground clearance in relation to the track and give drawing of two easily recognisable points at front and rear at which measurements are taken. These ground clearance dimensions are only for information when checking the track and can in no way affect the eligibility of the car.

NOTE 3.

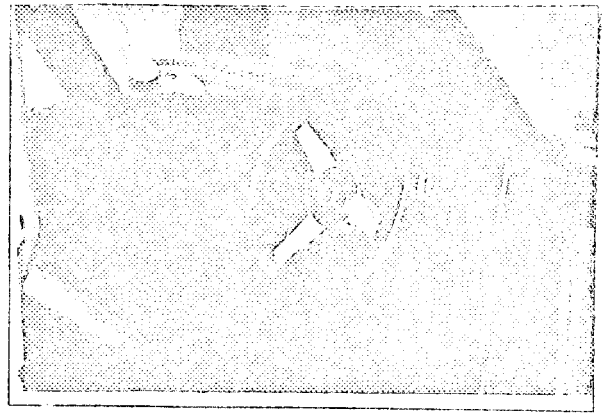
CONVERSION TABLE

1 inch/pouce	— 2.54	cm.	1 quart US	— 0.9464	ltrs.
1 foot/pied	— 30.4794	cm.	1 pint (pt)	— 0.568	ltrs.
1 sq. inch/pouce carre	— 6.452	cm. ²	1 gallon Imp.	— 4.546	ltrs.
1 cubic inch/pouce cube	— 16.387	cm. ³	1 gallon US	— 3.785	ltrs.
1 pound/livre (lb)	— 453.593	gr.	1 hundred weight (cwt.)	— 50.802	kg.

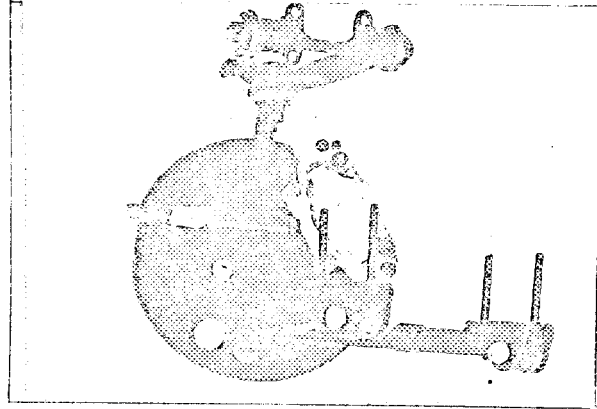
B



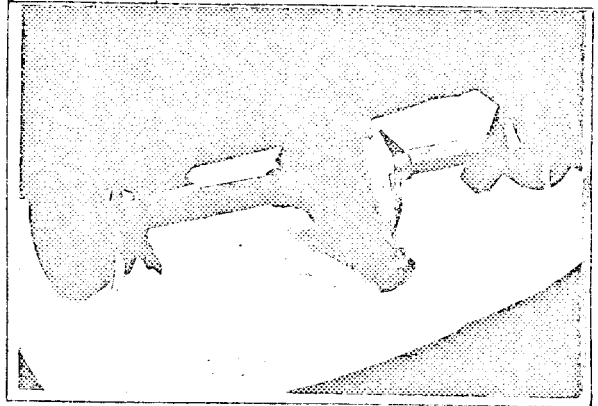
C



D



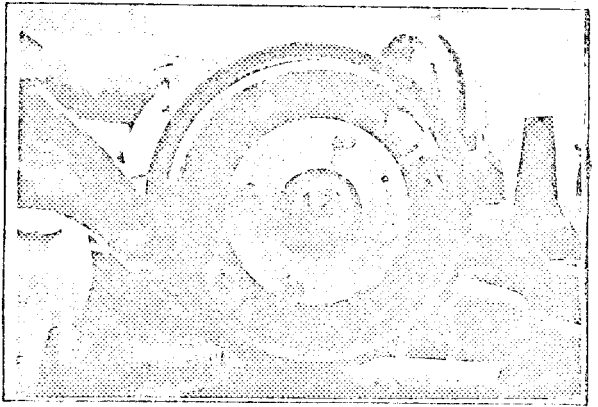
E



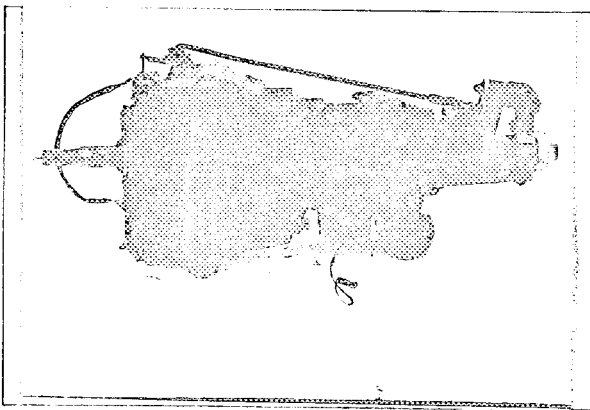
F



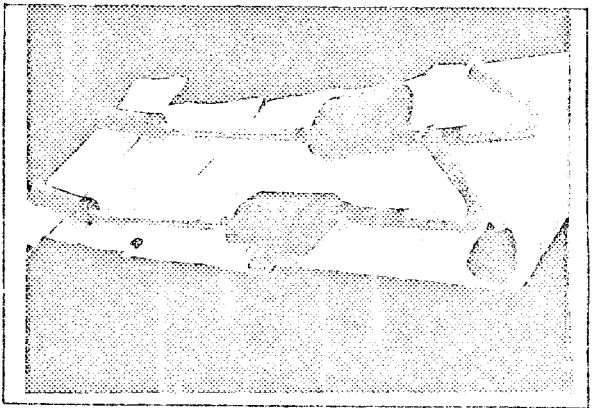
G

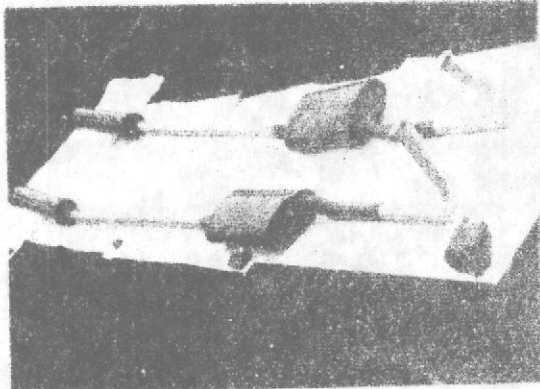
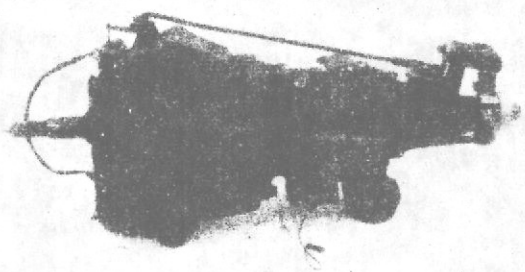
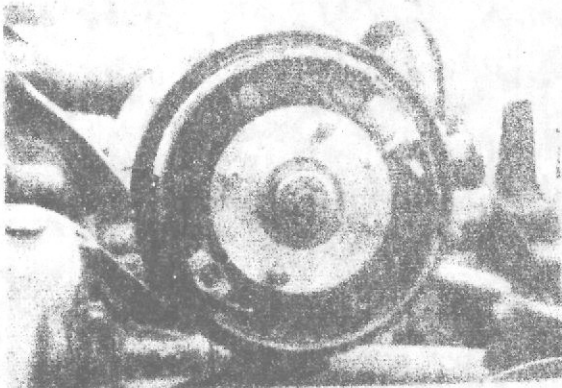
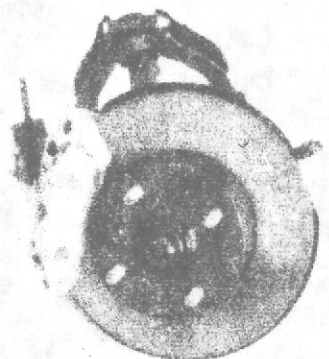
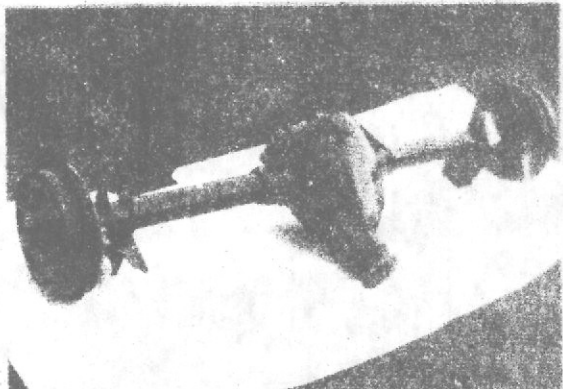
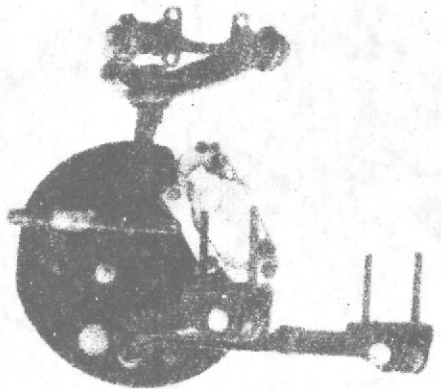
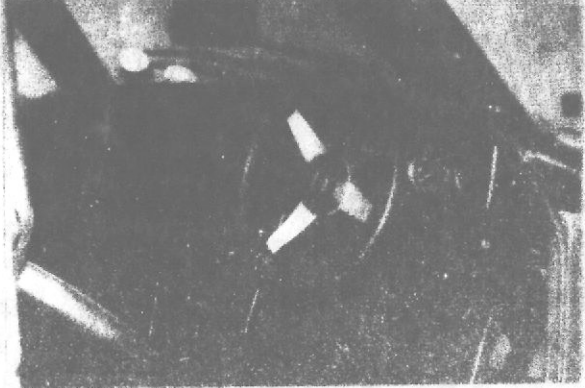


H

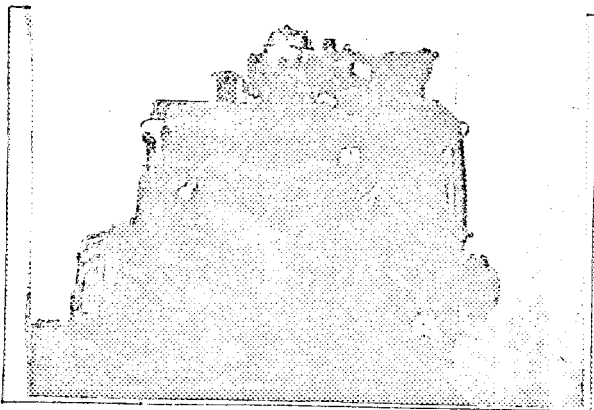


I

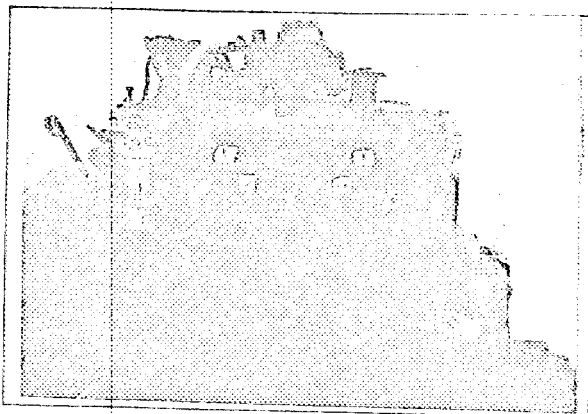




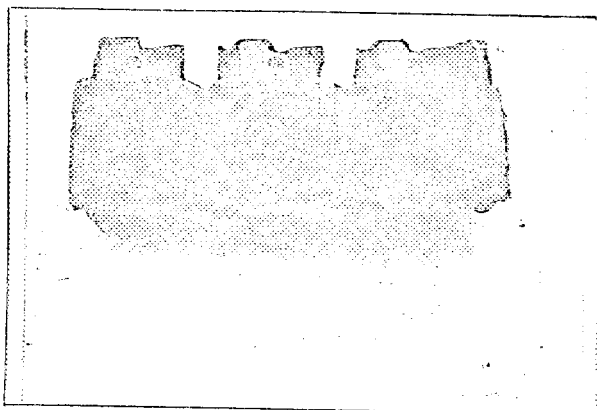
J



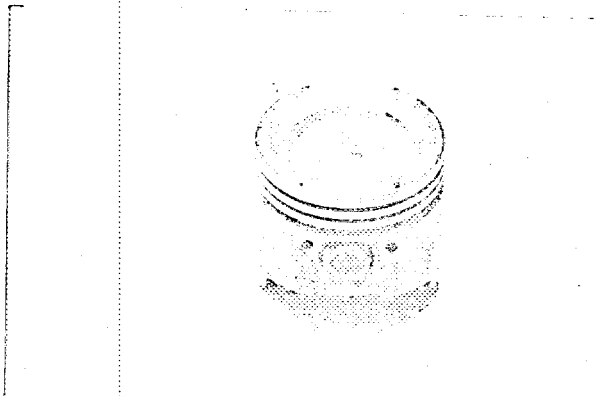
K



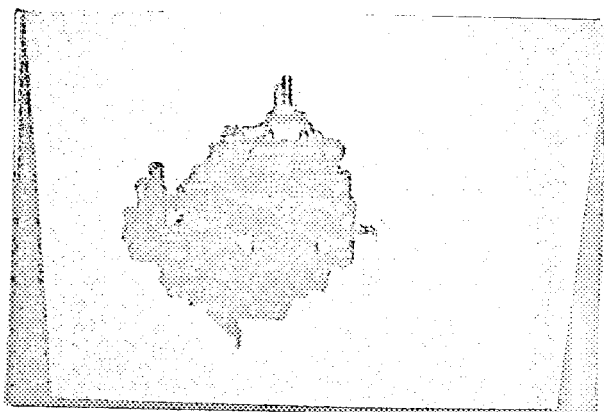
L



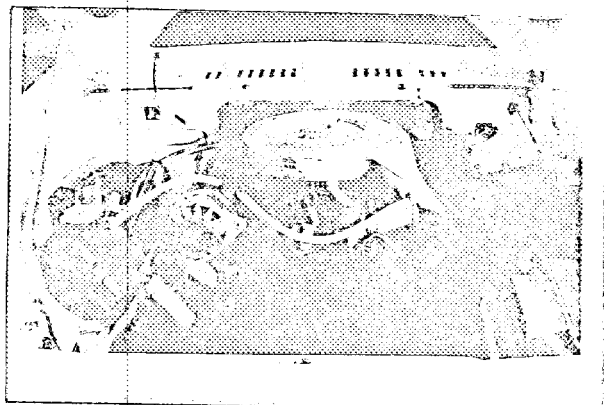
M



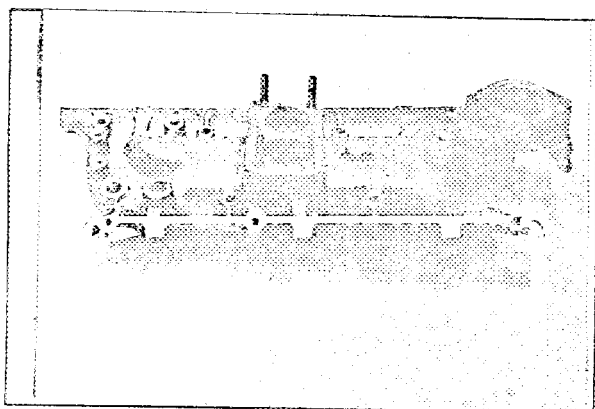
N



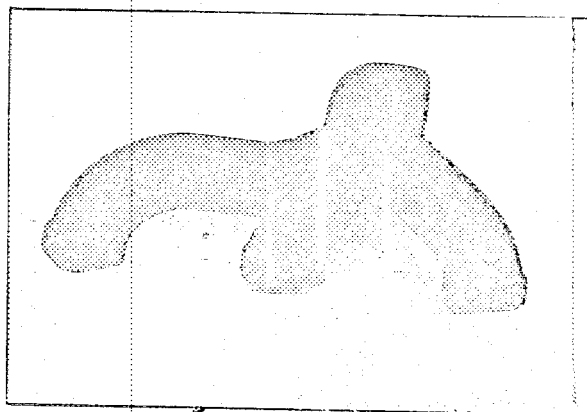
O

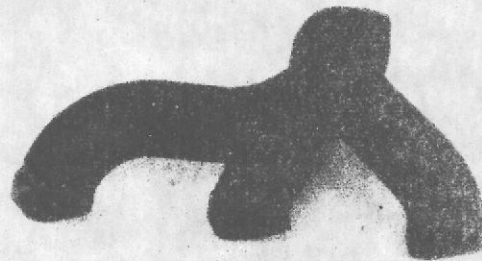
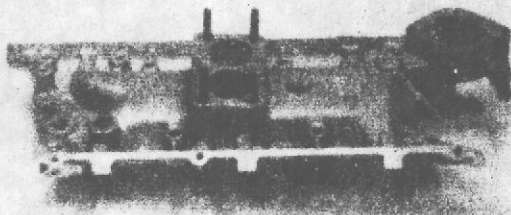
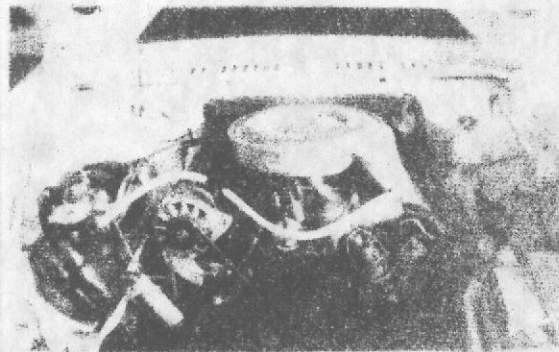
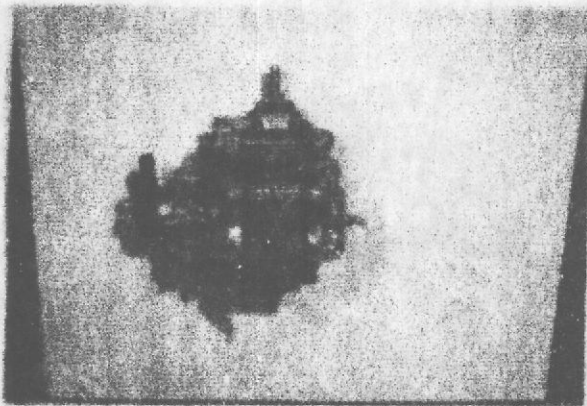
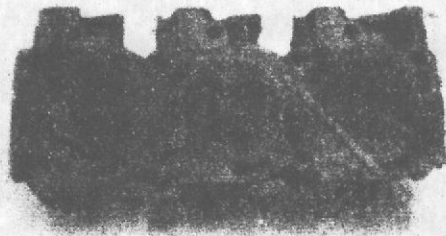
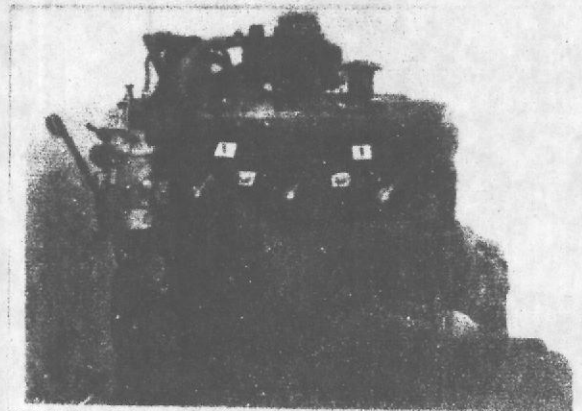
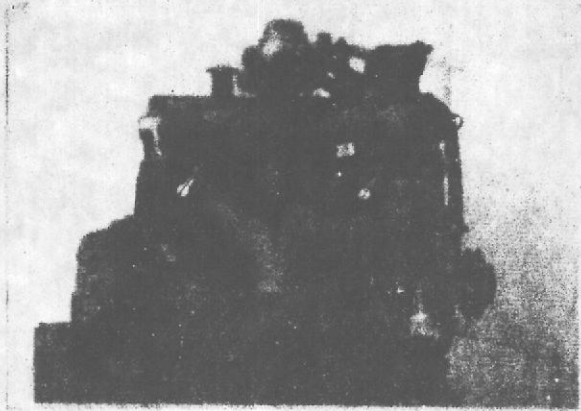


P

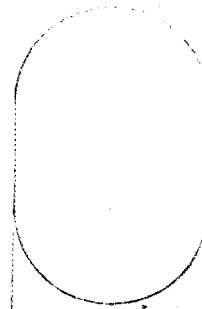


Q





Drawing inlet manifold ports, side of cylinderhead. Indicate scale or dimensions and manufacturing tolerance.



1.64 ins
41.7 mm.

0.92 ins
23.4 mm.

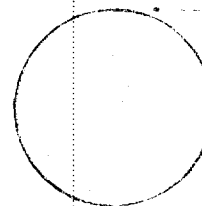
Drawing of entrance to inlet port of cylinderhead. Indicate scale or dimensions and manufacturing tolerance.

1.72 ins
43.7 mm.



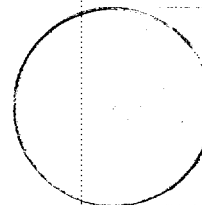
0.84 ins
21.3 mm.

Drawing of exhaust manifold ports, side of cylinderhead. Indicate scale or dimensions and manufacturing tolerance.



1.50 ins
38.1 mm.

Drawing of exit to exhaust port of cylinderhead. Indicate scale or dimensions and manufacturing tolerance.



1.29 ins
32.8 mm.

All dimensions \pm .040 ins
1.016 mm.

CHASSIS AND COACHWORK (Photographs A, B and C)

- 20. Chassis/body construction: separate/~~unitary~~ construction
- 21. Unitary construction, material(s) N/A
- 22. Separate construction, Material(s) of chassis Steel
- 23. Material(s) of coachwork Glass Reinforced Plastic
- 24. Number of doors 2 Material(s) Glass Reinforced Plastic
- 25. Material(s) of bonnet Glass Reinforced Plastic
- 26. Material(s) of boot lid N/A
- 27. Material(s) of rear-window Toughened Glass
- 28. Material(s) of windscreen Toughened or Laminated Glass
- 29. Material(s) of front-door windows Toughened Glass
- 30. Material(s) of rear-door windows N/A
- 31. Sliding system of door windows Rotating Handle
- 32. Material(s) of rear-quarter light Toughened Glass

ACCESSORIES AND UPHOLSTERY

- 38. Interior heating : yes — ~~no~~
- 39. Air conditioning : ~~yes~~ — no
- 40. Ventilation : yes — ~~no~~
- 41. Front seats, type of seat and upholstery/bucket PVC
- 42. Weight of front seat(s), complete with supports and rails, out of the car :

7.7	kg.	17	lbs.
-----	-----	----	------
- 43. Rear seats, type of seat and upholstery Individual PVC
- 44. Front bumper, material(s) Steel Weight

2.9	kg.	6.5	lbs.
-----	-----	-----	------
- 45. Rear bumper, material(s) Steel Weight

3.6	kg.	8.0	lbs.
-----	-----	-----	------

WHEELS

- 50. Type Pressed Steel Disc
- 51. Weight (per wheel, without tyre)

7.7	kg.	17.0	lbs.
-----	-----	------	------
- 52. Method of attachment 1/4 Taper Nut Fixing
- 53. Rim diameter 355.6 mm. 14 ins. 54. Rim width

139.7	mm.	5.5	ins.
-------	-----	-----	------

STEERING

- 60. Type Rack & Pinion
- 61. Servo-assistance : ~~yes~~ — no
- 62. Number of turns of steering wheel from lock to lock 3.5
- 63. In case of servo-assistance N/A

Make Reliant

Model Scimitar GTE

F.I.A. Rec. No. 1610

SUSPENSION

- 70. Front suspension (photograph D), type Independent Double Wishbone
- 71. Type of spring Coil
- 72. Stabiliser (if fitted) Seperate with Links
- 73. Number of shock absorbers 2
- 74. Type Telescopic Double Acting
- 78. Rear suspension (photograph E), type Live Axle
- 79. Type of spring Coil
- 80. Stabiliser (if fitted) N/A
- 81. Number of shock absorbers 2
- 82. Type Telescopic Double Acting

BRAKES (photographs F and G)

- 90. Method of operation Hydraulic
- 91. Servo-assistance (if fitted), type Hydraulic Vacuum
- 92. Number of hydraulic master cylinders One

	FRONT 3		REAR 1	
93. Number of cylinders per wheel				
94. Bore of wheel cylinder(s)	1 x 57,23 mm.	2,253 inches	20,29 mm.	0,875 inches
	2 x 40,49	1,594		
95. Inside diameter	mm.	inches	228,6 mm.	9,0 inches
96. Length of brake linings	mm.	inches	219,1 mm.	8,62 inches
97. Width of brake linings	mm.	inches	44,45 mm.	1,75 inches
98. Number of shoes per brake			2	
99. Total area per brake	mm. ²	sq. in.	1947,8 mm. ²	30,2 sq. in.

Disc Brakes

100. Outside diameter	269,9 mm.	10,63 inches	mm.	inches
101. Thickness of disc	12,7 mm.	0,5 inches	mm.	inches
102. Length of brake linings	88,9 mm.	3,5 inches	mm.	inches
103. Width of brake linings	50,8 mm.	2,0 inches	mm.	inches
104. Number of pads per brake		2		
105. Total area per brake	889,1 mm. ²	13,78 sq. in.	mm. ²	sq. in.

ENGINE (photographs J and K)

130. Cycle	Four Stroke	131. Number of cylinders	6
132. Cylinder Arrangement	V Formation, banks of 3		
133. Bore	93.67 mm. 3.687 in.	134. Stroke	72.44 mm. 2.851 in.
135. Capacity per cylinder		499 cm. ³	30.45 cu. in.
136. Total cylinder capacity		2994 cm. ³	182.7 cu. in.
137. Material(s) of cylinder block	Cast Iron	138. Material(s) of sleeves (if fitted)	None
139. Cylinder head, material(s)	Cast Iron	Number fitted	2
140. Number of inlet ports	6	141. Number of exhaust ports	6
142. Compression ratio	8.9:1 ± .3		
143. Volume of one combustion chamber		+ .3 58.48 cm. ³	+ .3 3.568 in.
144. Piston, material	Aluminium Alloy	145. Number of rings	3
146. Distance from gudgeon pin centre line to highest point of piston crown		46.1 mm.	1.8 in.
147. Crankshaft: cast /stamped		148. Type of crankshaft: integral/	Cast with balance weights
149. Number of crankshaft main bearings	4		
150. Material of bearing cap	Cast Iron		
151. System of lubrication: dry sump /oil in sump			
152. Capacity, lubricant	5.6 ltrs. 9.8 pts.	5.9 quarts U.S.	
153. Oil cooler: yes /no		154. Method of engine cooling	Water & fan
155. Capacity of cooling system	11.2 ltrs. 19.7 pts.	11.6 quarts U.S.	including heater if fitted
156. Cooling fan (if fitted) dia.		30.48 cm.	12 in.
157. Number of blades of cooling fan	4		
<u>Bearings</u>			
158. Crankshaft main, type	} Copper lead or aluminium tin	dia.	63.52 m.m. 2.5016 in.
159. Connecting rod big end, type		dia.	60.36 m.m. 2.3765 in.
<u>Weights</u>			
160. Flywheel (clean)		9.5 kg.	21 lbs.
161. Flywheel with clutch (all turning parts)		17.25 kg.	38 lbs.
162. Crankshaft	18 kg. 40 lbs.	163. Connecting rod	.74 kg. 1.72 lbs.
164. Piston with rings and pin		.75 kg.	1.73 lbs.

FOUR STROKE ENGINES

170. Number of camshafts One 171. Location Between cylinder banks
 172. Type of camshaft drive Gear
 173. Type of valve operation O.H.V. and tappets

INLET (see page 4)*

180. Material(s) of inlet manifold Aluminium
 181. Diameter of valves 41.07 mm. 1.617 ins.
 182. Max. valve lift 8.97 mm. .344 in. 183. Number of valve springs 1 or 2
 184. Type of spring Helical coil 185. Number of valves per cylinder 1
 186. Tappet clearance for checking timing (cold/warm) .254 mm. .010 ins.
 187. Valves open at (with tolerance for tappet clearance indicated) 20° B, T, D, C,
 188. Valves close at (with tolerance for tappet clearance indicated) 64° A, B, D, C,
 189. Air filter, type Paper element

EXHAUST (see page 4)*

195. Material(s) of exhaust manifold Cast Iron
 196. Diameter of valves 36.9 mm. 1.453 ins.
 197. Max. valve lift 8.54 mm. .335 in. 198. Number of valve springs 1 or 2
 199. Type of spring Helical coil 200. Number of valves per cylinder 1
 201. Tappet clearance for checking timing (cold/warm) 14.25 mm. 15 ins.
 202. Valves open at (with tolerance for tappet clearance indicated) 70° B, B, D, C,
 203. Valves close at (with tolerance for tappet clearance indicated) 14° A, T, D, C,
 204. Diameter outlet orifice exhaust manifold 38.1 mm. 1.5 ins.

CARBURETION (photograph N)

210. Number of carburettors fitted One 211. Type Downdraught
 212. Make Weber 213. Model 40 DFAV
 214. Number of mixture passages per carburettor 2
 215. Flange hole diameter of exit port(s) of carburettor 33.6 mm. 1.33 ins.
 216. Minimum diameter of venturi/minimum diam., with piston at maximum height (example: SU) 28 mm. 1.16 ins.

INJECTION (if fitted)

220. Make of pump 221. Number of plungers
 222. Model or type of pump 223. Total number of injectors
 224. Location of injectors
 225. Minimum diameter of inlet pipe mm. ins.

* For additional information concerning two-stroke engines and super-charged engines, see page 13.

IMPORTANT:

During the scrutineering of cars entered in group 5 (Sportscars) only the following items of the present recognition form are to be taken into consideration: 1, 2, 3, 9, 20, 21, 22, 23, 24, 25, 26, 70, 71, 78, 79, 90, 130, 131, 132, 133, 134, 135, 136, 137, 138, 139, 140, 141, 147, 148, 149, 150, 158, 159, 170, 171, 172, 173, 185, 200, 270, 271, 274, 275, 290, 291, 292 and photographs A, B, D, E, F, G, H, J, K and O.

The vehicle described in this form has been subject to the following amendments:

on	19	rec. no.	List	on	19	rec. no.	List
on	19	rec. no.	List	on	19	rec. no.	List
on	19	rec. no.	List	on	19	rec. no.	List
on	19	rec. no.	List	on	19	rec. no.	List
on	19	rec. no.	List	on	19	rec. no.	List

Optional equipment affecting preceding information. This to be stated together with reference number.

Manufacturing Tolerances :

- For all machined surfaces allow 0.75%
- For all non-machined surfaces allow 3%
- For weights of all part machined parts allow 2.5%
- For weights of all fully machined parts allow 1.75%

