



F.I.A. Recognition No. \_\_\_\_\_

5442

Group \_\_\_\_\_

I

## ROYAL AUTOMOBILE CLUB 31 Belgrave Square, London, SW1X 8QH

Form of recognition in accordance with appendix J to the International Sporting Code of the  
FEDERATION INTERNATIONALE DE L'AUTOMOBILE

Manufacturer FORD MOTOR COMPANY LIMITED

Serial No. of chassis/body BBATLJ 38952

Serial No. of engine -

Recognition is valid from 1st January 1972

The manufacturing of the model described in this recognition form started on May 1971

and the minimum production of 5000 identical cars, in accordance with the specifications of  
this form was reached on October 1971

Cylinder-capacity 1297 cm.<sup>3</sup> 79.5 in.<sup>3</sup>

Model ESCORT SPORT (RHD and LHD)

Manufacturer FORD

Manufacturer FORD

List \_\_\_\_\_

Photograph A.  $\frac{1}{4}$  view of car from front



F.I.A. Stamp

R.A.C. Stamp



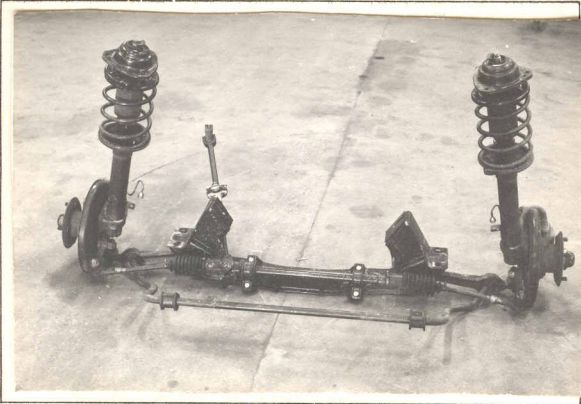
B



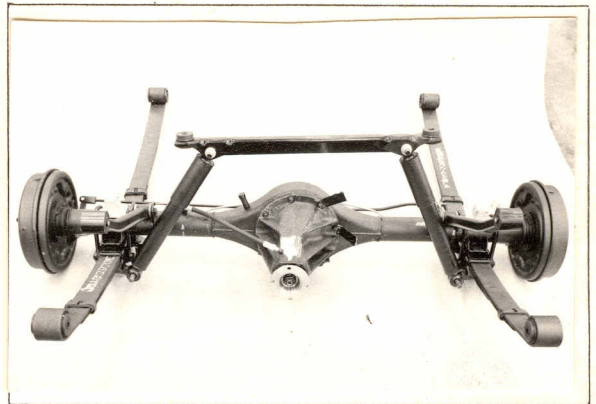
C



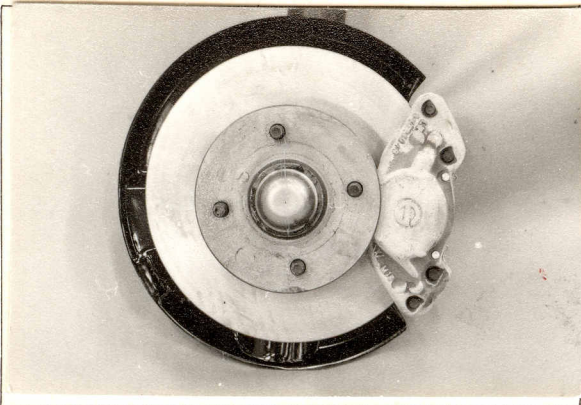
D



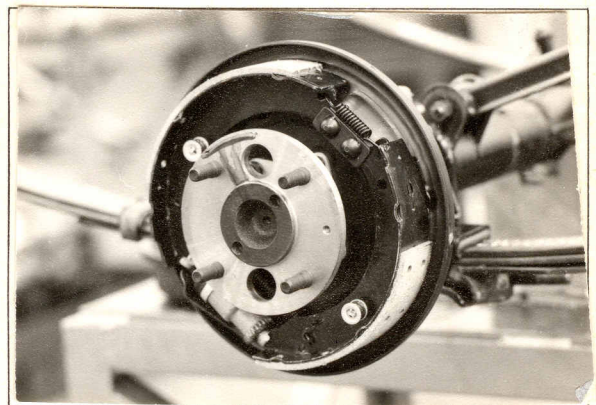
E



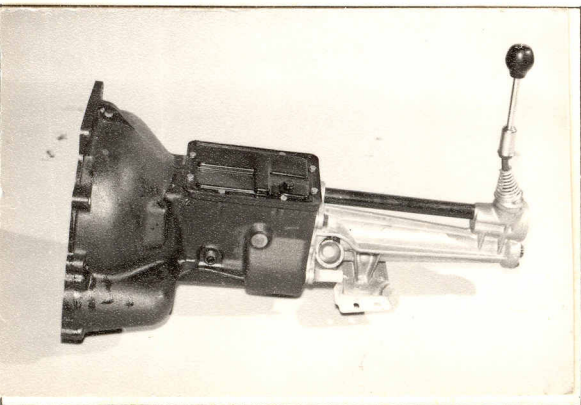
F



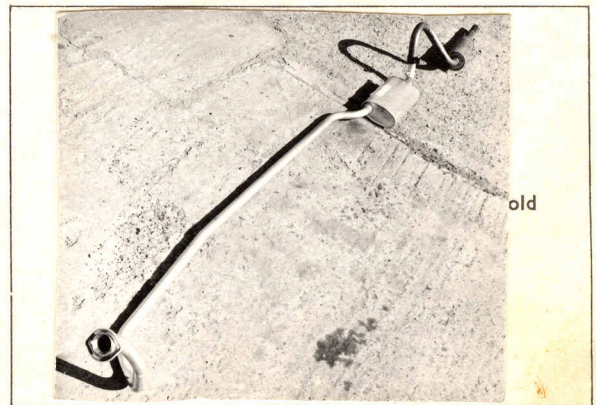
G



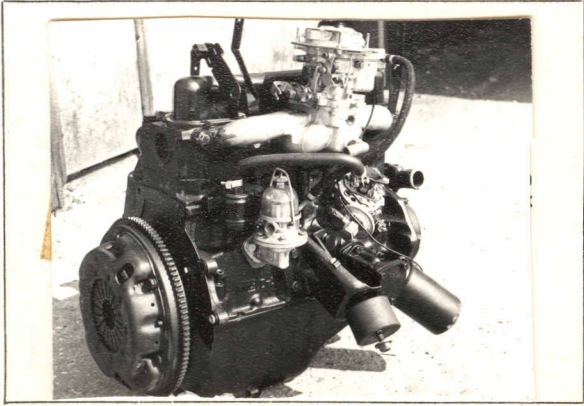
H



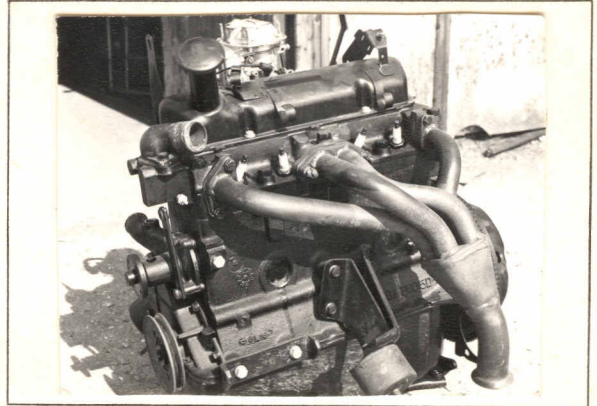
I



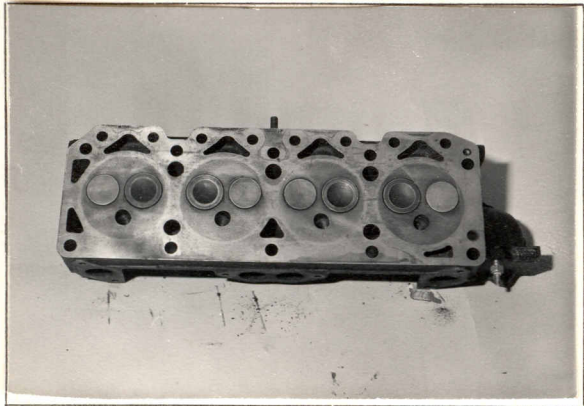




J



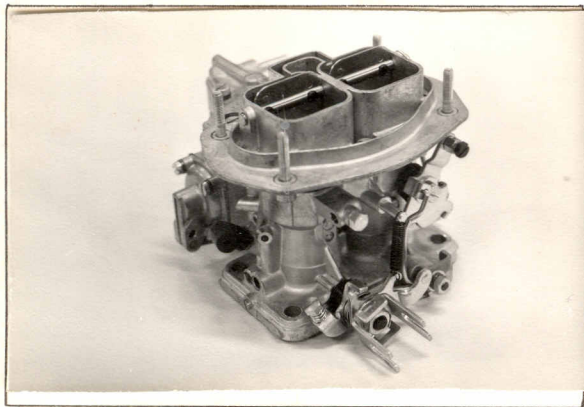
K



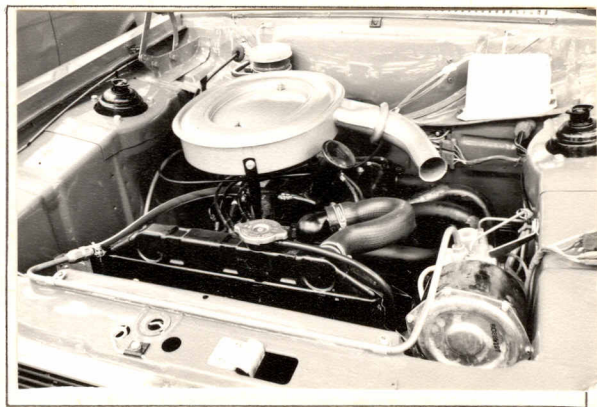
L



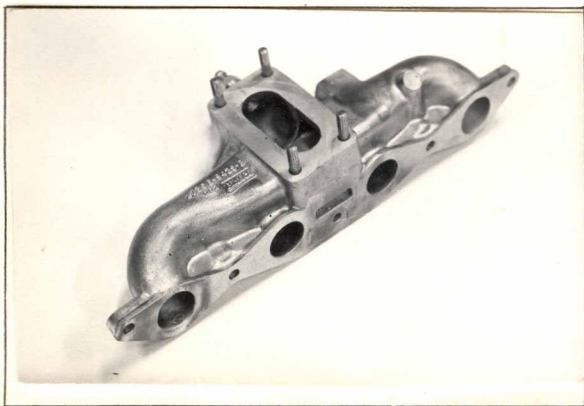
M



N



O



P



Q

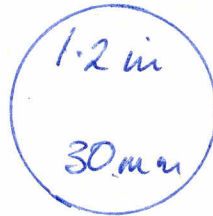
Drawing inlet manifold ports, side of cylinderhead. Indicate scale or dimensions and manufacturing tolerance.



Drawing of entrance to inlet port of cylinderhead. Indicate scale or dimensions and manufacturing tolerance.



Drawing of exhaust manifold ports, side of cylinderhead. Indicate scale or dimensions and manufacturing tolerance.



Drawing of exit to exhaust port of cylinderhead. Indicate scale or dimensions and manufacturing tolerance.



± 0.050 in.



**NOTE 1.**

All dimensions must be given in two measuring systems, see Note 3.

**CAPACITIES AND DIMENSIONS**

1. Wheelbase	$\pm$	1 cm	2430	mm.	96.0	inches
2. Front track	$\pm$	1 cm				
		1270	mm.	50.0	inches	
3. Rear track	$\pm$	1 cm	1295	mm.	51.0	inches

Measure unit from rocker panel to road

Front		Rear
10 ins		10 ins
	See Note 2	



4. Overall length of the car	397.8	cm.	156.6	inches
5. Overall width of the car	160.7	cm.	62	inches
6. Overall height of the car	134.6	cm.	53	inches
7. Capacity of fuel tank (reserve included)				
	40.9	ltrs.	10.8	gall. U.S.
			9	gall. Imp.
8. Seating Capacity.				
9. Weight. Total weight of the car with normal equipment, water, oil, and spare wheel but without fuel or repair tools :				
	766	kg.	1687	lbs.
			15.1	cwts.

**NOTE 2.**

Differences in track caused by the use of other wheels with different rim widths must be stated when recognition is requested for the wheels concerned. Specify ground clearance in relation to the track and give drawing of two easily recognisable points at front and rear at which measurements are taken. These ground clearance dimensions are only for information when checking the track and can in no way affect the eligibility of the car.

**NOTE 3.**

**CONVERSION TABLE**

1 inch/pouce	—	2.54	cm.	1 quart US	—	0.9464	ltrs.
1 foot/pied	—	30.4794	cm.	1 pint (pt)	—	0.568	ltrs.
1 sq. inch/pouce carre	—	6.452	cm. <sup>2</sup>	1 gallon Imp.	—	4.546	ltrs.
1 cubic inch/pouce cube	—	16.387	cm. <sup>3</sup>	1 gallon US	—	3.785	ltrs.
1 pound/livre (lb)	—	453.593	gr.	1 hundred weight (cwt.)	—	50.802	kg.

**CHASSIS AND COACHWORK (Photographs A, B and C)**

- 20. Chassis/body construction: ~~separate~~/unitary construction
- 21. Unitary construction, material(s) steel
- 22. Separate construction, Material(s) of chassis steel
- 23. Material(s) of coachwork steel
- 24. Number of doors 2 Material(s) steel
- 25. Material(s) of bonnet steel
- 26. Material(s) of boot lid steel
- 27. Material(s) of rear-window glass
- 28. Material(s) of windscreen glass (laminated)
- 29. Material(s) of front-door windows glass
- 30. Material(s) of rear-door windows NA
- 31. Sliding system of door windows Totating handle
- 32. Material(s) of rear-quarter light glass

**ACCESSORIES AND UPHOLSTERY**

- 38. Interior heating : ~~yes~~—no optional
- 39. Air conditioning : ~~yes~~—no
- 40. Ventilation : ~~yes~~—no
- 41. Front seats, type of seat and upholstery PVC
- 42. Weight of front seat(s), complete with supports and rails, out of the car :
 

7.25	kg.	16	lbs.
------	-----	----	------
- 43. Rear seats, type of seat and upholstery PVC
- 44. Front bumper, material(s) steel Weight 2.5 kg. 5.5 lbs.
- 45. Rear bumper, material(s) steel Weight 2.5 kg. 5.5 lbs.

**WHEELS**

- 50. Type Pressed steel disc
- 51. Weight (per wheel, without tyre) 5.8 kg. 12 lbs.
- 52. Method of attachment 4 taper nuts
- 53. Rim diameter 330 mm. 13 ins. 54. Rim width 127 mm. 5 ins.

**STEERING**

- 60. Type Rack and pinion
- 61. Servo-assistance : ~~yes~~—no
- 62. Number of turns of steering wheel from lock to lock 2.7
- 63. In case of servo-assistance N/A



**SUSPENSION**

- 70. Front suspension (photograph D), type independent Mcpherson strut
- 71. Type of spring coil
- 72. Stabiliser (if fitted) integral with lower arms
- 73. Number of shock absorbers 2
- 74. Type integral with strut/telescopic
- 78. Rear suspension (photograph E), type live axle
- 79. Type of spring: leaf
- 80. Stabiliser (if fitted) trailing links
- 81. Number of shock absorbers 2
- 82. Type telescopic

**BRAKES** (photographs F and G)

- 90. Method of operation Hydraulic
- 91. Servo-assistance (if fitted), type Hydraulic vacuum
- 92. Number of hydraulic master cylinders one

	<b>FRONT</b>		<b>REAR</b>	
		<u>2</u>		<u>1</u>
93. Number of cylinders per wheel				
94. Bore of wheel cylinder(s)	<u>48</u> mm.	<u>1.9</u> inches	<u>19</u> mm.	<u>0.7</u> inches
95. Inside diameter	mm.	inches	<u>203</u> mm.	<u>8</u> inches
96. Length of brake linings	mm.	inches	<u>156.7</u> mm.	<u>6.25</u> inches
97. Width of brake linings	mm.	inches	<u>38.1</u> mm.	<u>1.5</u> inches
98. Number of shoes per brake				
99. Total area per brake	mm. <sup>2</sup>	sq. in.	<u>1207</u> mm. <sup>2</sup>	<u>18.75</u> sq. in.

**Disc Brakes**

100. Outside diameter	<u>215.7</u> mm.	<u>8.5</u> inches	mm.	inches
101. Thickness of disc	mm.	<u>.375</u> inches	mm.	inches
102. Length of brake linings	<u>63.5</u> mm.	<u>2.5</u> inches	mm.	inches
103. Width of brake linings	mm.	<u>1.69</u> inches	mm.	inches
104. Number of pads per brake				
105. Total area per brake	<u>567.8</u> mm. <sup>2</sup>	<u>8.8</u> sq. in.	mm. <sup>2</sup>	sq. in.

**ENGINE** (photographs J and K)

- |   |                    |   |                                      |
|---|--------------------|---|--------------------------------------|
| 130. Cycle  | Four stroke        | 131. Number of cylinders  | 4                                    |
| 132. Cylinder Arrangement   | in line            |   |                                      |
| 133. Bore   | 81.01 mm. 3.19 in. | 134. Stroke   | 62.89 mm. 2.48 in.                   |
| 135. Capacity per cylinder  |                    |   | 324.4 cm. <sup>3</sup> 19.8 cu. in.  |
| 136. Total cylinder capacity  |                    |   | 1297.7 cm. <sup>3</sup> 79.2 cu. in. |
| 137. Material(s) of cylinder block  | cast iron          | 138. Material(s) of sleeves (if fitted)                                 | steel                                |
| 139. Cylinder head, material(s)   | cast iron          | Number fitted   | 1                                    |
| 140. Number of inlet ports  | 4                  | 141. Number of exhaust ports  | 4                                    |
| 142. Compression ratio  | 9.2 : 1 $\pm$ .3   |   |                                      |
| 143. Volume of one combustion chamber                                       |                    |   | 39.4 cm. <sup>3</sup> 2.04 cu. in.   |
| 144. Piston, material   | Aluminium alloy    | 145. Number of rings  | 3                                    |
| 146. Distance from gudgeon pin centre line to highest point of piston crown |                    |   | 44.12 mm. 1.737 in.                  |
| 147. Crankshaft: moulded/ <del>stamped</del>                                |                    | 148. Type of crankshaft: integral/ <del>cast with balance weights</del> |                                      |
| 149. Number of crankshaft main bearings                                     | 5                  |   |                                      |
| 150. Material of bearing cap  | cast iron          |   |                                      |
| 151. System of lubrication: <del>dry sump</del> /oil in sump                |                    |   |                                      |
| 152. Capacity, lubricant  | 3.6 ltrs. 6.4 pts. |   | 3.9 quarts U.S.                      |
| 153. Oil cooler: <del>yes/no</del> optional                                 |                    |   |                                      |
| 155. Capacity of cooling system   | 3.1 ltrs.          |   | 9 pts. 5.5 quarts U.S.               |
| 156. Cooling fan (if fitted) dia.   |                    |   | 22.9 cm. 9 in.                       |
| 157. Number of blades of cooling fan  | 11                 |   |                                      |

**Bearings**

- |                                   |             |      |            |           |
|-----------------------------------|-------------|------|------------|-----------|
| 158. Crankshaft main, type        | lead/bronze | dia. | 53.9 m.m.  | 2.125 in. |
| 159. Connecting rod big end, type | lead/bronze | dia. | 49.21 m.m. | 1.94 in.  |

**Weights**

- |   |        |         |                     |                 |
|---|--------|---------|---------------------|-----------------|
| 160. Flywheel (clean)                         |        |         | 7.5 kg.             | 16 lbs.         |
| 161. Flywheel with clutch (all turning parts) |        |         | 12 kg.              | 26.5 lbs.       |
| 162. Crankshaft                               | 10 kg. | 22 lbs. | 163. Connecting rod | .6 kg. 1.3 lbs. |
| 164. Piston with rings and pin                |        |         | .57 kg.             | 1.25 lbs.       |



**FOUR STROKE ENGINES**

170. Number of camshafts 1 171. Location Block  
 172. Type of camshaft drive chain  
 173. Type of valve operation tappet push rod and rockers

**INLET** (see page 4)\*

180. Material(s) of inlet manifold aluminium alloy  
 181. Diameter of valves 38.1 mm. 1.5 ins.  
 182. Max. valve lift 8.7 mm. 0.34 in. 183. Number of valve springs 1 or 2  
 184. Type of spring Helical coil 185. Number of valves per cylinder 1  
 186. Tappet clearance for checking timing (cold/warm) .305 mm. .012 ins.  
 187. Valves open at (with tolerance for tappet clearance indicated) 29° BTDC  
 188. Valves close at (with tolerance for tappet clearance indicated) 63° ABDC  
 189. Air filter, type paper element

**EXHAUST** (see page 4)\*

195. Material(s) of exhaust manifold steel tube  
 196. Diameter of valves 31.5 mm. 1.24 ins.  
 197. Max. valve lift 8.53 mm. .335 in. 198. Number of valve springs 1 or 2  
 199. Type of spring helical cord 200. Number of valves per cylinder 1  
 201. Tappet clearance for checking timing (cold/warm) .56 mm. .022 ins.  
 202. Valves open at (with tolerance for tappet clearance indicated) 71° BBDC  
 203. Valves close at (with tolerance for tappet clearance indicated) 21° ATDC  
 204. Diameter outlet orifice exhaust manifold 36.2 mm. 1.4 ins.

**CARBURETION** (photograph N)

210. Number of carburettors fitted 1 211. Type Downdraught  
 212. Make Weber 213. Model 32 D.G.V.  
 214. Number of mixture passages per carburettor 2  
 215. Flange hole diameter of exit port(s) of carburettor 32 mm. 1.25 ins.  
 216. Minimum diameter of venturi/minimum diam., with piston at maximum height (example : SU)  
 23/24 mm. .92/.97 ins.

**INJECTION** (if fitted)

220. Make of pump 221. Number of plungers  
 222. Model or type of pump 223. Total number of injectors  
 224. Location of injectors  
 225. Minimum diameter of inlet pipe mm. ins.

\* For additional information concerning two-stroke engines and super-charged engines, see page 13.

Make FORD

Model ESCORT SPORT

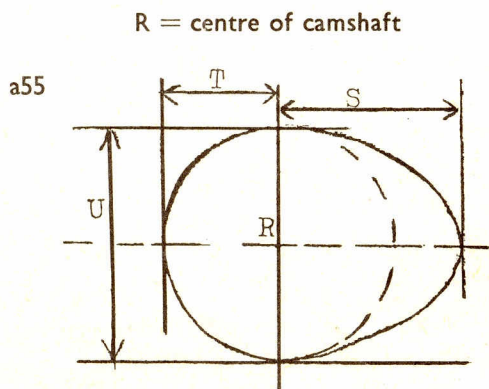
F.I.A. Rec. No. 5442

**ENGINE ACCESSORIES**

- 230. Fuel pump : mechanical and/or electrical
- 231. No. fitted one
- 232. Type of ignition system coil
- 233. No. of distributors 1
- 234. No. of ignition coils 1
- 235. No. of spark plugs per cylinder 1
- 236. Generator, type : dynamo/alternator—number fitted 1
- 237. Method of drive Belt
- 238. Voltage of generator 12 volts
- 239. Battery, number 1
- 240. Location Engine compartment
- 241. Voltage of battery 12 volts

**ENGINE AND CAR PERFORMANCES** (as declared by manufacturer in catalogue)

- 250. Max. engine output 82 (type of horsepower: BHP) at 6000 r.p.m.
- 251. Max. r.p.m. 7000 output at that figure 76
- 252. Max. torque 10.4 meter/kilo at 4000 r.p.m.
- 253. Max. speed of the car Not declared by manufacturer km./hour miles/hour



<u>Inlet cam</u>				
S =	19.5	mm.	.768	inches
T =	13.79	mm.	.544	inches
U =	27.58	mm.	1.088	inches
<u>Exhaust cam</u>				
S =	19.18	mm.	.761	inches
T =	13.84	mm.	.556	inches
U =	27.68	mm.	1.10	inches





**IMPORTANT :**

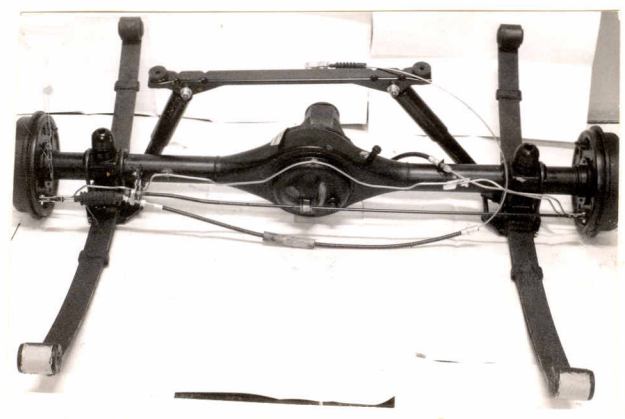
During the scrutineering of cars entered in group 5 (Sportscars) only the following items of the present recognition form are to be taken into consideration : 1, 2, 3, 9, 20, 21, 22, 23, 24, 25, 26, 70, 71, 78, 79, 90, 130, 131, 132, 133, 134, 135, 136, 137, 138, 139, 140, 141, 147, 148, 149, 150, 158, 159, 170, 171, 172, 173, 185, 200, 270, 271, 274, 275, 290, 291, 292 and photographs A, B, D, E, F, G, H, J, K and O.

The vehicle described in this form has been subject to the following amendments :

on.....	19.....	rec. no.....	List.....	on.....	19.....	rec. no.....	List.....
on.....	19.....	rec. no.....	List.....	on.....	19.....	rec. no.....	List.....
on.....	19.....	rec. no.....	List.....	on.....	19.....	rec. no.....	List.....
on.....	19.....	rec. no.....	List.....	on.....	19.....	rec. no.....	List.....
on.....	19.....	rec. no.....	List.....	on.....	19.....	rec. no.....	List.....

Optional equipment affecting preceding information. This to be stated together with reference number.

Reference picture E alternative axle fitted in production ratio 3.8 : 1







MOTOR SPORT DIVISION  
The Royal Automobile Club,  
31 Belgrave Square, London, S.W.1

Manufacturer FORD

Model Escort Sport

F.I.A. Recognition No. 5442

Amendment No. 1/IV

*Amendment to Form of Recognition*

**FEDERATION INTERNATIONALE DE L'AUTOMOBILE**

No.

Reference No.

Note Evolution in Production.

Alternative Exhaust Manifold fitted in production.

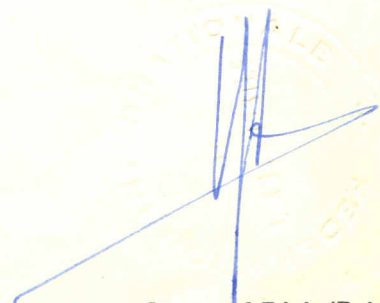
Part No. 711F 9428 DG.

54 Alternative Wheel fitted in production

Width 139.7mm 5.5ins.



Date amendment is valid from 1/9/72



Stamp of F.I.A./R.A.C.



MOTOR SPORT DIVISION  
 The Royal Automobile Club,  
 31 Belgrave Square, London, S.W.1

Manufacturer..... FORD  
 Model..... ESCORT SPORT  
 F.I.A. Recognition No. .... 5442  
 Amendment No. .... 2/1E

*Amendment to Form of Recognition*

**FEDERATION INTERNATIONALE DE L'AUTOMOBILE**

No.	Reference No.
	Evolution in production
	Revised instrument layout on all cars from January 1973
	See photograph A

Date amendment is valid from..... 1.7.73

Stamp of F.I.A./R.A.C.





**MOTOR SPORT DIVISION**  
 The Royal Automobile Club,  
 31 Belgrave Square, London, S.W.1

Manufacturer FORD

Model ESCORT SPORT

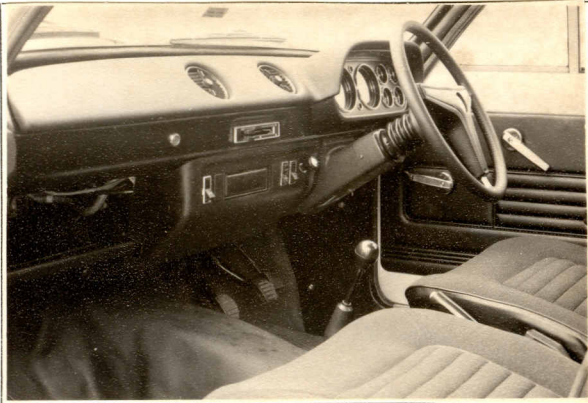
F.I.A. Recognition No. 5442

Amendment No. ....

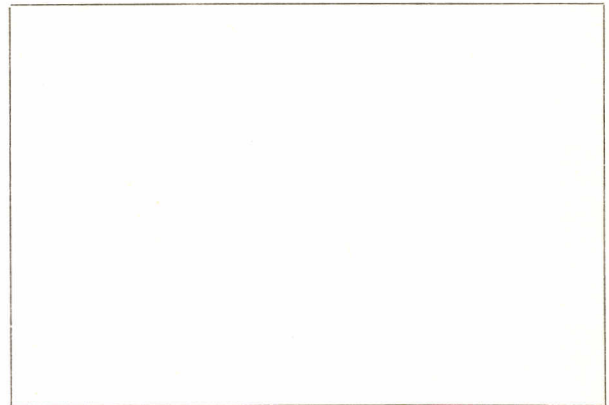
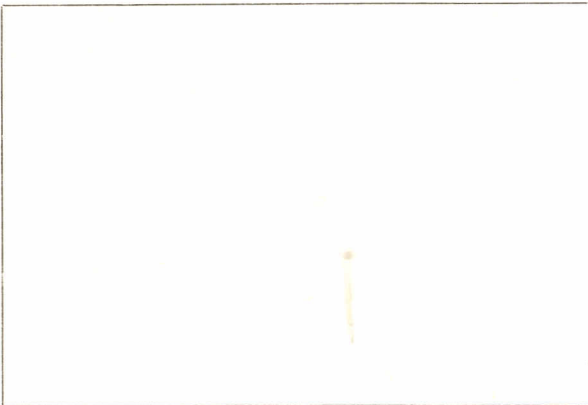
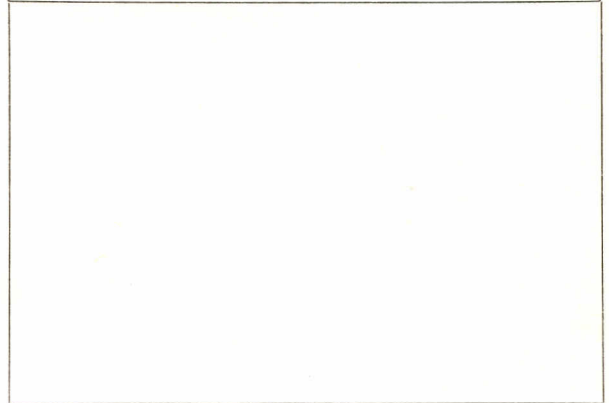
*Amendment to Form of Recognition*

**FEDERATION INTERNATIONALE DE L'AUTOMOBILE**

Photographs must be 3"×2" and a matt finish



Photograph A



Date amendment is valid from.....

Stamp of F.I.A./R.A.C.



MOTOR SPORT DIVISION  
The Royal Automobile Club,  
31 Belgrave Square, London, S.W.1

Manufacturer..... FORD  
Model..... ESCORT SPORT  
F.I.A. Recognition No. .... 5442  
Amendment No. .... 3/2V

*Amendment to Form of Recognition*

**FEDERATION INTERNATIONALE DE L'AUTOMOBILE**

No.	Reference No.
	<b>Variant in production (alternative supplier) for German-built cars</b>
	Adjustable bucket seat Part No. 9050 819 (See photograph A) <i>Weight 18kg (38lbs)</i>
	Salisbury rear axle ratios <span style="background-color: black; color: black;">XXXXXXXXXX</span>
	4.11 to 1 part no 0800 815
	3.89 to 1 part no 0801 197 see photo B
	Heavy duty oil pump (alternative supplier) part no. 9051 675 (See photograph C)
	Exhaust system to export exhaust emission requirements Part No. 9050 832 See photo D
	Production steering gear ratio 1454 267 3.5 turns lock to lock
	Leather steering wheel part no. 9052 231 (See photograph E)
	Alternator with bracket Part No. 1928 397 (28 amp) Part No. 1428 260 (35 amp)
	Regular production option
	Cooling fan with seven blades (Production item)

Date amendment is valid from 1.11.73

Stamp of F.I.A./R.A.C.  
*[Handwritten signature]*





**MOTOR SPORT DIVISION**  
 The Royal Automobile Club,  
 31 Belgrave Square, London, S.W.1

Manufacturer FORD  
 Model ESCORT SPORT  
 F.I.A. Recognition No. 5442  
 Amendment No. 3/W

**Amendment to Form of Recognition**  
**FEDERATION INTERNATIONALE DE L'AUTOMOBILE**

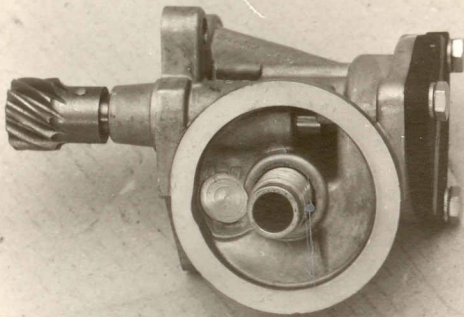
Photographs must be 3"×2" and a matt finish



Photograph A



Photograph B



Photograph C



Photograph D



Photograph E

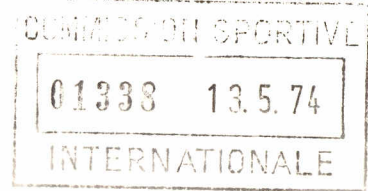


Date amendment is valid from.....

Stamp of F.I.A./R.A.C.

*Amendment to Form of Recognition*

**FEDERATION INTERNATIONALE DE L'AUTOMOBILE**



No.	Reference No.
	Evolution in production
50	Pressed steel disc sports pattern
51	5.8 kg      12.0 lb
52	4 taper nut fixing
53	330 mm      13.0 ins      127.0 mm      5.0 ins
2	Front track      1292.5 mm      50.5 ins $\pm$ 2.54 cm      1.0 ins
	Rear track      1307.5 mm      51.5 ins $\pm$ 2.54 cm      1.0 ins
	See Photo A
	Revised rear suspension with rear anti-roll bar
	See Photo B

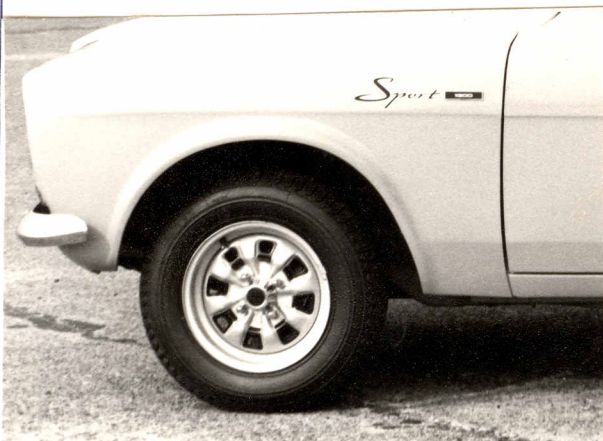


Photo A

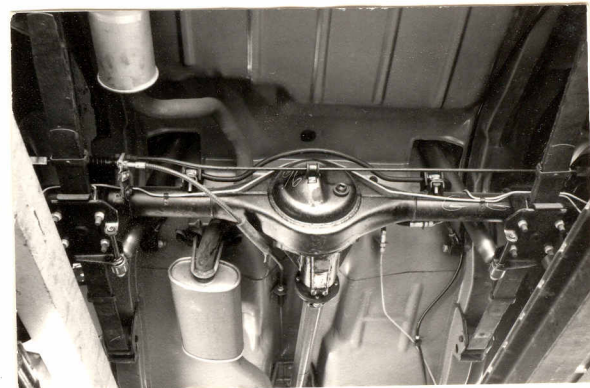


Photo B

Date amendment is valid from... 1 7 76

Stamp of F.I.A./R.A.C.



*Amendment to Form of Recognition*

**FEDERATION INTERNATIONALE DE L'AUTOMOBILE**

Photographs must be 3" x 2" and a matt finish



Photograph A



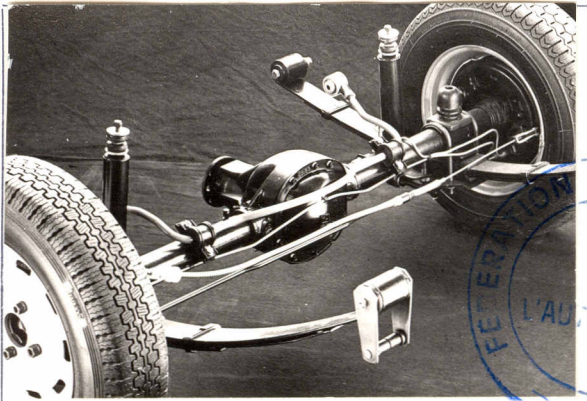
Photograph B



Photograph C



Photograph D



Photograph E

Date amendment is valid from.....

Stamp of F.I.A./R.A.C.



**MOTOR SPORT DIVISION**  
 The Royal Automobile Club,  
 31 Belgrave Square, London, S.W.1

Manufacturer ..... FORD  
 Model ..... ESCORT GT  
 F.I.A. Recognition No. .... 542  
 Amendment No. .... 5/3E

*Amendment to Form of Recognition*

**FEDERATION INTERNATIONALE DE L'AUTOMOBILE**

No.	Reference No.
	Evolution in production Revised body shell See photographs A B & C
1.	2407 mm            94.7 ins        +/- 25.4 mm    +/- 1.0"
2.	1270 mm           49.9 ins        +/- 25.4 mm    +/- 1.0"
3.	1296 mm           51.02 ins       +/- 25.4 mm    +/- 1.0"
4.	3978 mm           156.6 ins
5.	1596 mm           62.8 ins
6.	1398 mm           55.03 ins
7.	41.0 litres        10.8 U.S. Gallons    9 Imp. Gallons
8.	4
9.	775 kg            1680.4 lb       15.0 cwt
10.	Front 59 ins      149.8 cms      Rear 60 ins      152.4 cms
	Measured from rocker panel to road Front 9.75 ins    24.7 cm        Rear 10.75 ins    27.3 cms
	Different instrument panel see photograph D.
	Different rear suspension incorporating anti roll bar see photograph E



Date amendment is valid from 1.1.75

Stamp of F.I.A./R.A.C.





**MOTOR SPORT DIVISION**  
**The Royal Automobile Club**  
**31 Belgrave Square, London SW1X 8QH**

Manufacturer ..... FORD .....  
 Model ..... ESCORT SPORT .....  
 F.I.A. Recognition No. .... 5442 .....  
 Amendment No. .... 6/3V .....

*Amendment to Form of Recognition*

**FEDERATION INTERNATIONALE DE L'AUTOMOBILE**

**VALID IN GROUP.....1.....**

No.                      Reference No.

Alternative pattern for 5 $\frac{1}{2}$ J x 13" wheels - interchangeable in all respects with existing 5 $\frac{1}{2}$ J x 13" wheels - see amendment 1/1V.



Date amendment is valid from..... 1/1/75 .....

Stamp of F.I.A./R.A.C.



**MOTOR SPORT DIVISION**  
**The Royal Automobile Club**  
 31 Belgrave Square, London SW1X 8QH

Manufacturer ..... **FORD**  
 Model ..... **ESCORT SPORT**  
 F.I.A. Recognition No. .... **5442**  
 Amendment No. **07/04V**

*Amendment to Form of Recognition*

-1.OCT.1978

**FEDERATION INTERNATIONALE DE L'AUTOMOBILE**

**VALID IN GROUP ..... 1 .....**

No.

Reference No.

Sports Seat - Type Bucket  
 Supplied with or without head restraint  
 Manufacture: Ford  
 Weight: 9 kg.  
 Mounting: Slide runners



Sports Seat - Type Recliner  
 Supplied with or without head restraint  
 Recliner mechanism can be fitted either side of seat to  
 suit LHD or RHD cars.  
 Manufacture: Ford  
 Weight: 12 kg.  
 Mounting: Slide runners







**MOTOR SPORT DIVISION**  
**The Royal Automobile Club**  
**31 Belgrave Square, London SW1X 8QH**

Manufacturer FORD  
 Model ESCORT SPORT  
 F.I.A. Recognition No. 5442  
 Amendment No. 08/05V

*Amendment to Form of Recognition*

-1.OCT.1978

**FEDERATION INTERNATIONALE DE L'AUTOMOBILE**

**VALID IN GROUP.....<sup>1</sup>.....**

No.

Reference No.

Product Variant

Heavy duty suspension - including

Reinforced crossmember and  
 engine mounts

Part no:  
 9051874

Photo:  
 D78-1

Upated front suspension strut

( 9053062  
 ( 9053063

D78-2

Upated rear dampers

9052890

Upated front spring

9052706

Upated rear spring

9051947

Upated front roll bar clamp

9051304

D78-3

Revised front roll bar for above

1476383

Alternative gearbox -

includes new bell housing, clutch release components and  
 propshaft. H78-1

Ratio

Teeth

2.54 32/20 x 27/17

1.66 32/20 x 25/24

1.255 32/20 x 22/28

1.0 Direct

One or two piece propshaft may be fitted depending on territory.





**MOTOR SPORT DIVISION**  
**The Royal Automobile Club**  
**31 Belgrave Square, London SW1X 8QH**

Manufacturer FORD  
 Model ESCORT SPORT  
 F.I.A. Recognition No. 5442  
 Amendment No. \_\_\_\_\_

*Amendment to Form of Recognition*

08/05V

FEDERATION INTERNATIONALE DE L'AUTOMOBILE

Valid in Group 1

-1.OCT.1978

Photographs must be 3" x 2" and a matt finish



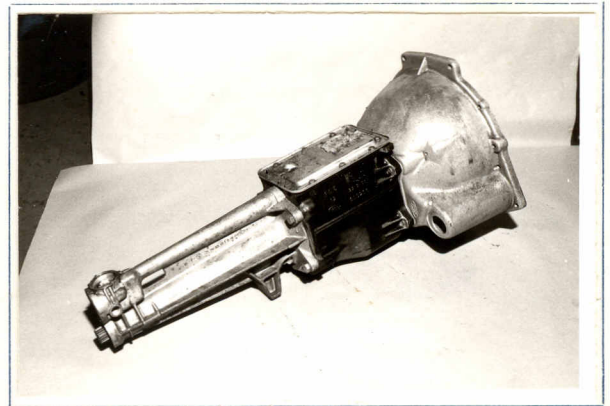
D78-1



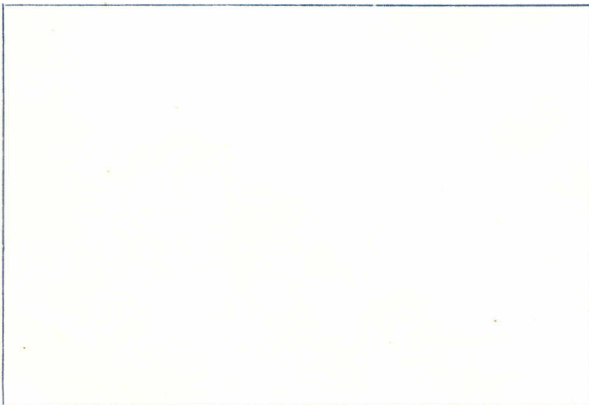
D78-2



D78-3



H78-1



Date amendment is valid from.....

Stamp of F.I.A./R.A.C.



**MOTOR SPORT DIVISION**  
**The Royal Automobile Club**  
**31 Belgrave Square, London SW1X 8QH**

Manufacturer FORD  
 Model ESCORT SPORT  
 F.I.A. Recognition No. 5442  
 Amendment No. 09/04E  
 -1.NOV.1978

*Amendment to Form of Recognition*

**FEDERATION INTERNATIONALE DE L'AUTOMOBILE**  
**VALID IN GROUP.....<sup>1</sup>.....**

No.                      Reference No.

Evolution in Production

Single leaf rear spring

Drum Brake - rear (1975 & 1976 model year only)

- 95 - 228.6mm dia.
- 96 - 180mm long
- 97 - 44.5mm wide
- 98 - 2

Disc Brake - front (from 1975 model year)

- 100 - 247.5mm dia.
- 101 - 12.7mm wide
- 102 - 76.2mm
- 103 - 50.8mm
- 104 - 2

61 - Thickness of disc: 12.7 mm -







BRITISH MOTOR SPORTS COUNCIL  
31 Belgrave Square, London SW1X 8QH

Manufacturer FORD  
Model ESCORT 1.3  
F.I.A. Recognition No. 5442  
Amendment No. 10/06V

Amendment to Form of Recognition

FEDERATION INTERNATIONALE DE L'AUTOMOBILE

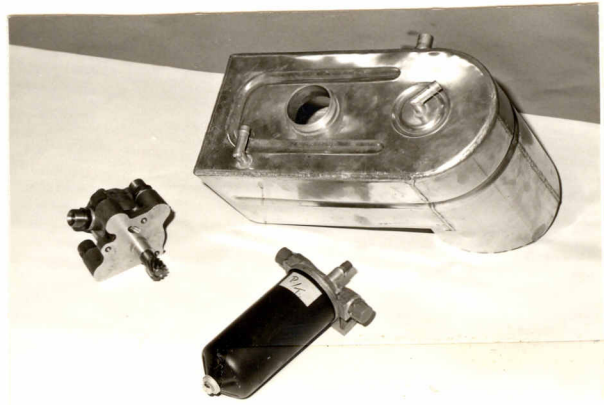
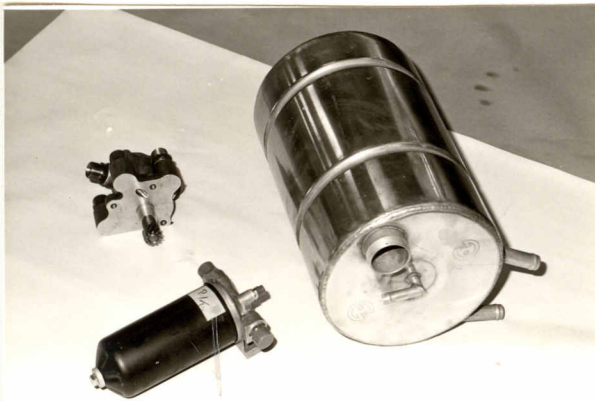
Valid in Group 2

No.

Reference No.

"valable en Groupe 2 uniquement"  
"valid for Group 2 only"

Dry sump oil system.  
Alternative oil tanks available.



Axle ratios:

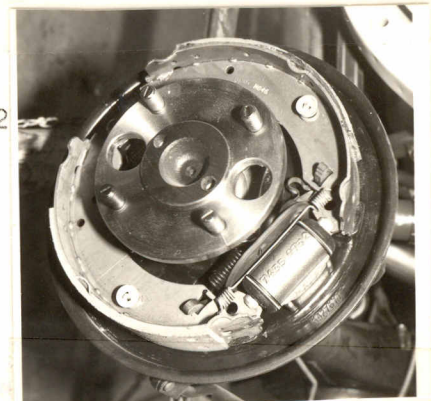
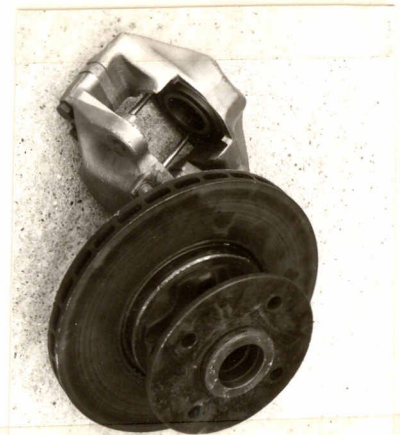
3.54 - 39:11  
3.77 - 34:9  
3.89 - 35:9  
4.125 - 33:8  
4.37 - 35:8  
4.44 - 40:9  
4.7 - 33:7

4.9 - 34:7  
5.1 - 36:7  
5.3 - 37:7  
5.5 - 39:7  
5.7 - 34:6  
5.83 - 35:6  
6.1 - 37:6

Brake Kit:

Front  
94 54mm  
100 244mm  
101 20mm (vented)  
102 76.6mm  
103 50.8mm  
104 2  
105 656.6 cm<sup>2</sup>

Rear  
94 19.0mm  
95 203mm  
96 159.0mm  
97 38.1mm  
98 2  
99 121.6 cm<sup>2</sup>



*[Handwritten signature]*



Date amendment is valid from 1.5.80 1980

Stamp of F.I.A./R.A.C



# FEDERATION INTERNATIONALE DU SPORT AUTOMOBILE

Homologation N°

5442

Extension N°

11 / 01 ER

FICHE D'EXTENSION A L'HOMOLOGATION OFFICIELLE FISA  
FORM OF EXTENSION TO THE OFFICIAL FISA HOMOLOGATION

**ET** Evolution normale du type: dès le numéro de châssis  
Normal evolution of the type: as from chassis number \_\_\_\_\_

**VF** Variante de fourniture / Supply variant

**VO** Variante option / Option variant

**ER** Errata / Erratum

Homologation valable dès le - 1 DEC. 1984 en groupe A  
Homologation valid as from \_\_\_\_\_ in group \_\_\_\_\_

Constructeur FORD Modèle et type escort sport 1297  
Manufacturer \_\_\_\_\_ Model and type \_\_\_\_\_

Page ou ext. Page or ext.	Art. Art.	Description Description
------------------------------	--------------	----------------------------

La signature et le cachet représentés ci-dessous annulent  
et remplacent les signatures et cachets précédents.

The signature and stamp shown below cancel and replace  
the previous signatures and stamps.

