



F.I.A. Recognition No. 5026
 Group I Series Production Touring

ROYAL AUTOMOBILE CLUB
 31 Belgrave Square, London, SW1X 8QH

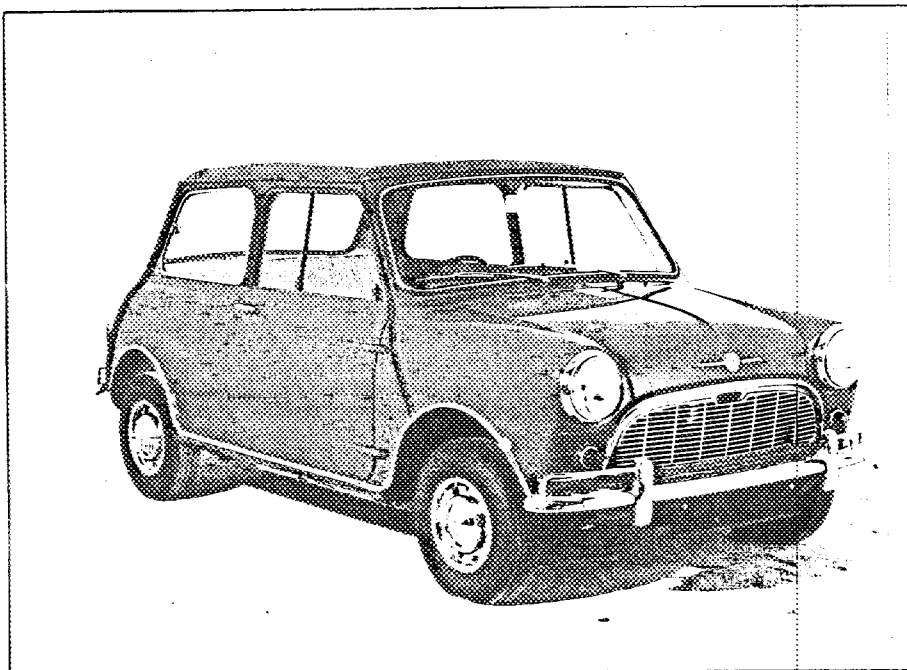
Form of recognition in accordance with appendix J to the International Sporting Code of the
 FEDERATION INTERNATIONALE DE L'AUTOMOBILE

Manufacturer	MORRIS MOTORS LIMITED	Model	MORRIS MINI MINOR
Serial No. of chassis/body	M/A2S4	Manufacturer	BRITISH MOTOR CORPORATION
Serial No. of engine	8AM	Manufacturer	BRITISH MOTOR CORPORATION
Recognition is valid from	1st January 1966	List	14

Cylinder-capacity 848 cm.³ 51.7 in.³

The manufacturing of the model described in this recognition form started on 30th September 1964
 and the minimum production of 5000 identical cars, in accordance with the specifications of
 this form was reached on 24th October 1964

Photograph A. 1/2 view of car from front

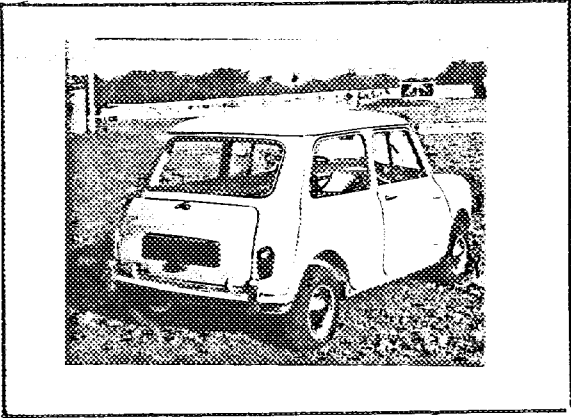


F.I.A. Stamp

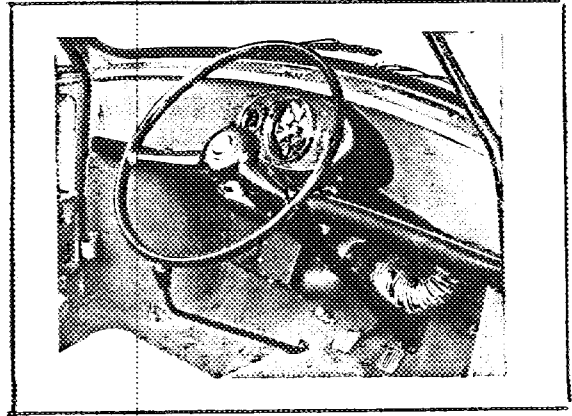


R.A.C. Stamp

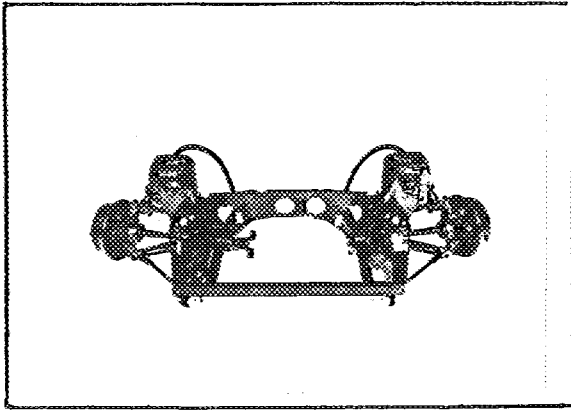
B



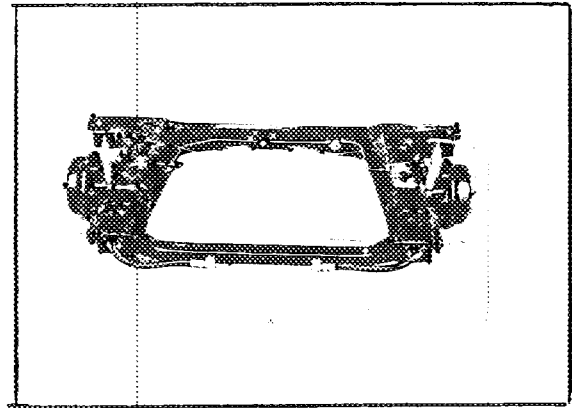
C



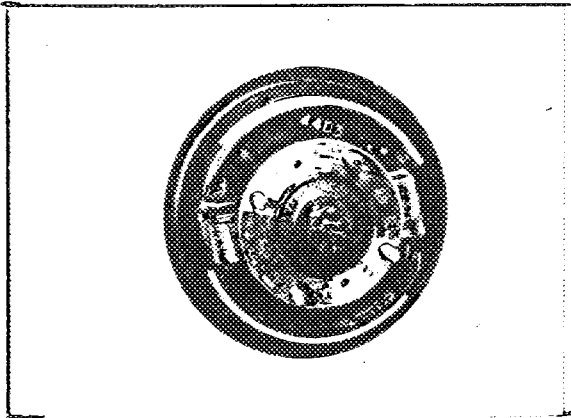
D



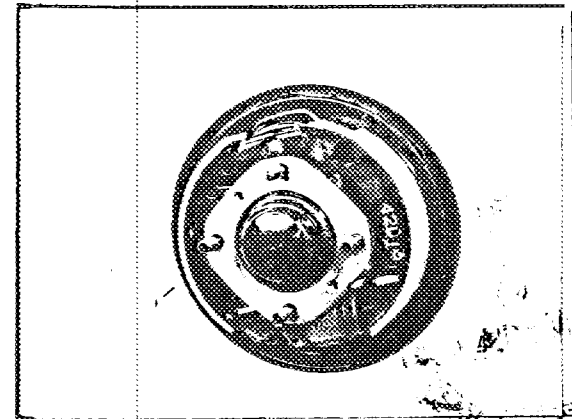
E



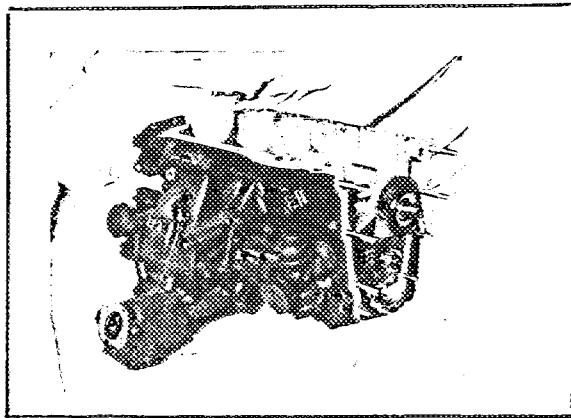
F



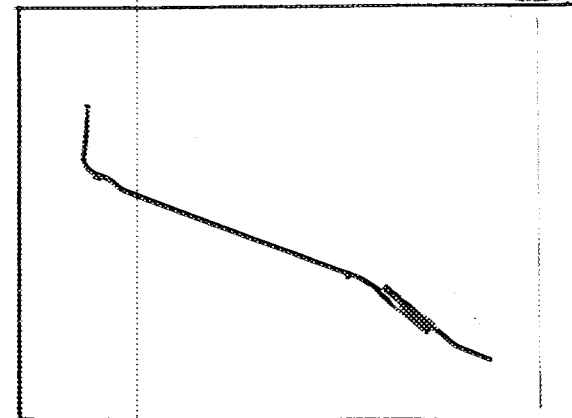
G



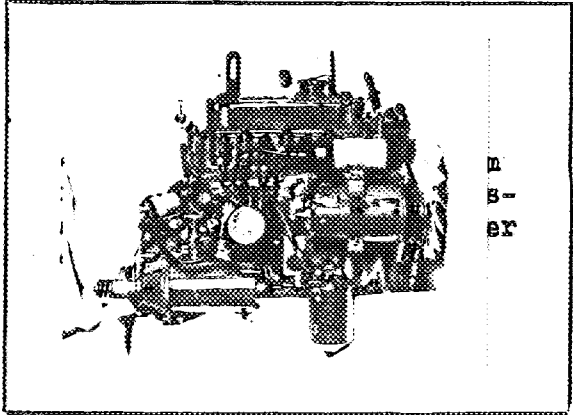
H



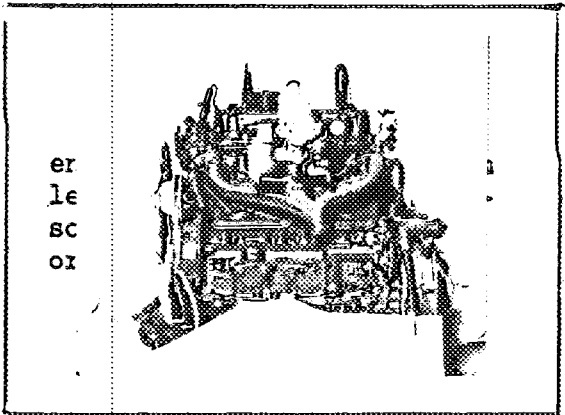
I



J



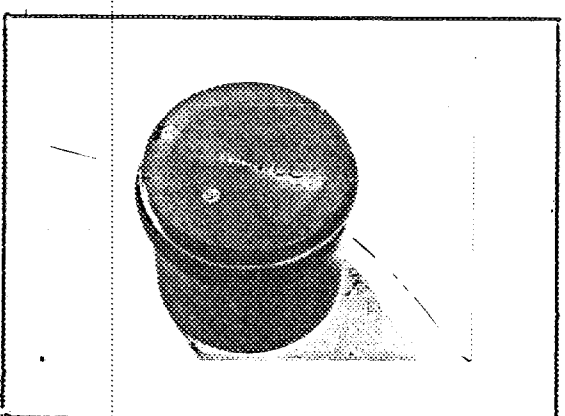
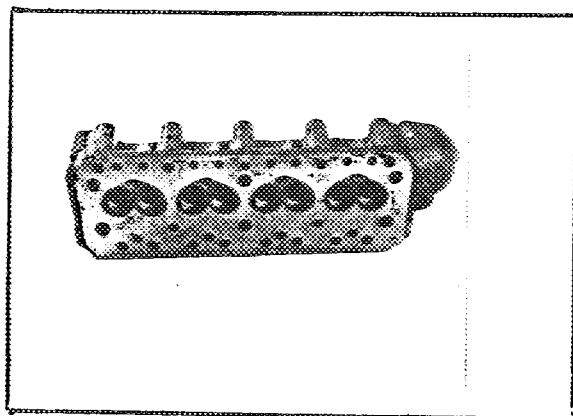
er
le
sc
or



er
le
sc
or

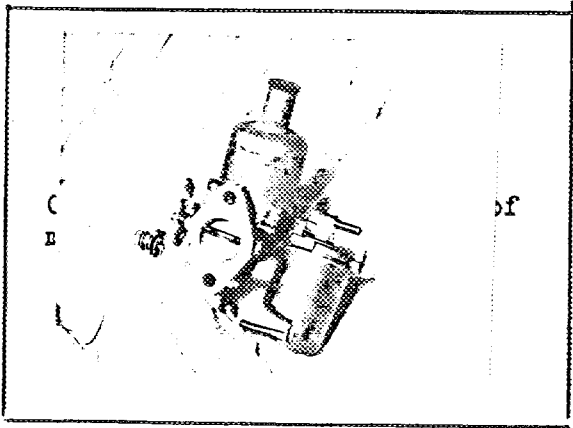
K

L



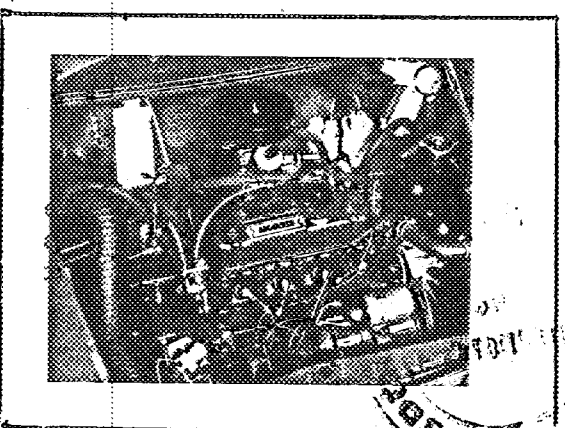
M

N

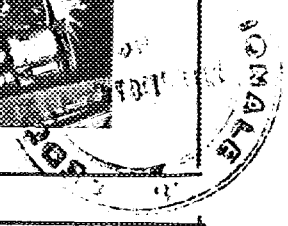


C
B

of

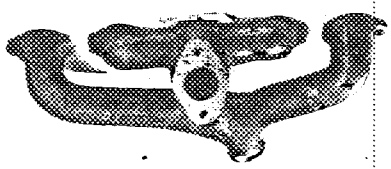


O



P

inlet manifold



manifold

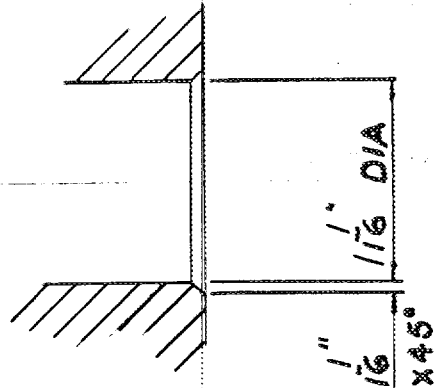
Q

Make Morris

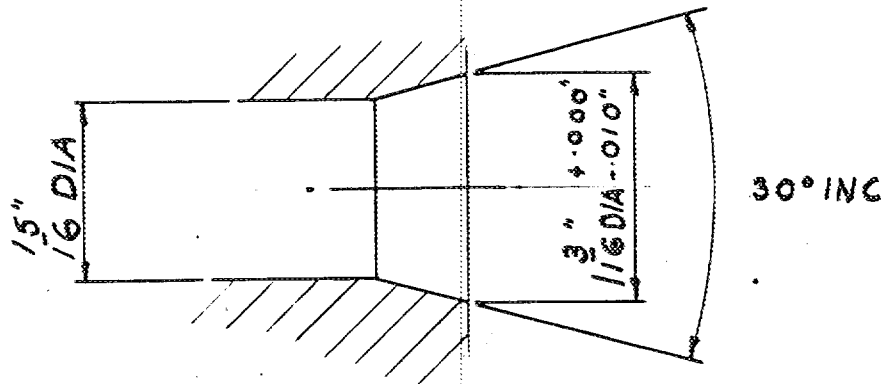
Model Morris Mini Minor

F.I.A. Rec.no. 5026

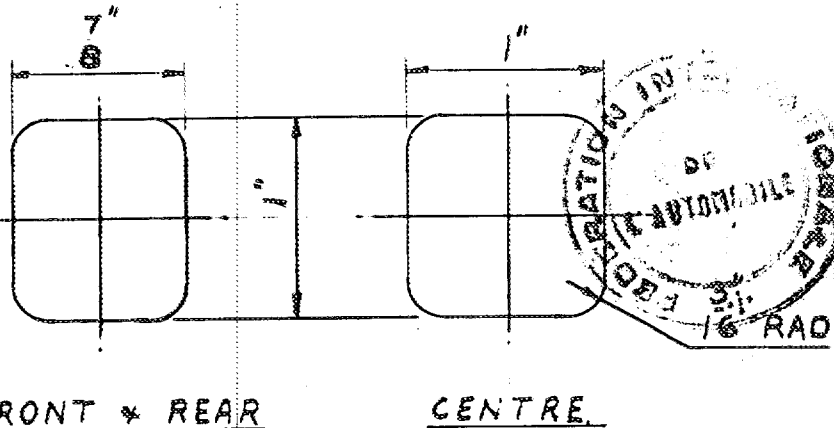
Drawing inlet manifold ports, side of cylinder-head. Indicate scale or dimensions and manufacturing tolerance.



Drawing of entrance to inlet port of cylinder-head. Indicate scale or dimensions and manufacturing tolerance.



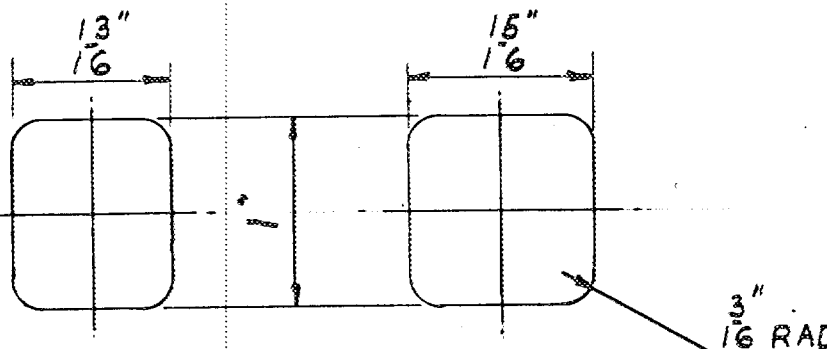
Drawing of exhaust manifold ports, side of cylinderhead. Indicate scale or dimensions and manufacturing tolerance.



FRONT * REAR

CENTRE

Drawing of exit to exhaust port of cylinderhead. Indicate scale or dimensions and manufacturing tolerance.



FRONT * REAR

CENTRE

GEN. TOL. $\pm .010$ "

Make Morris

Model Mini Minor

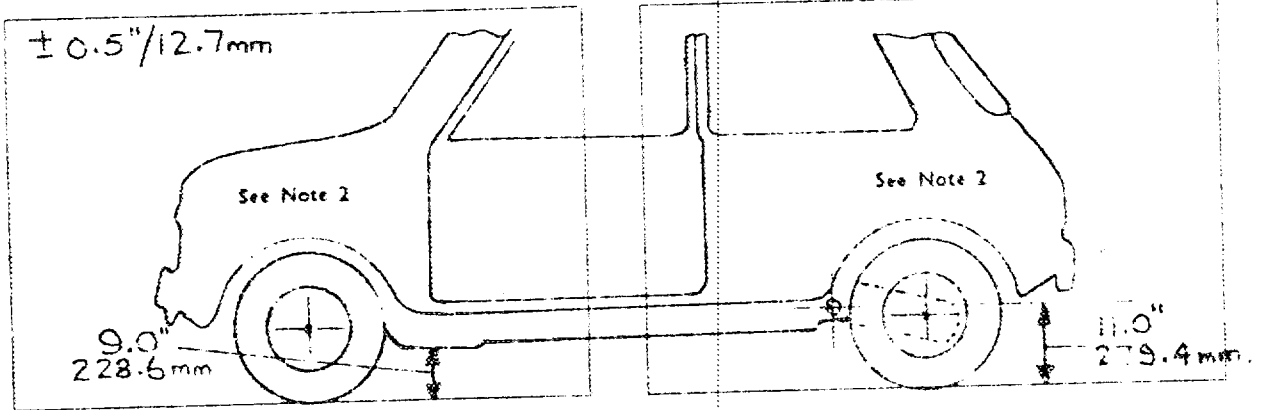
F.I.A. Rec. No. 5026

NOTE 1.

All dimensions must be given in two measuring systems, see Note 3.

CAPACITIES AND DIMENSIONS

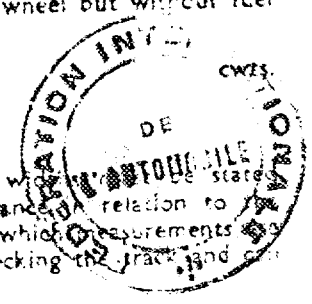
1. Wheelbase	2036.0	mm.	80.15	inches
2. Front track	(± 6.35 mm / 0.25")			
	1205.0	mm.	47.437	inches
3. Rear track	(± 6.35 mm / 0.25")			
	1465.0	mm.	45.875	inches



4. Overall length of the car	305.5	cm.	120.25	inches	
5. Overall width of the car	141.0	cm.	55.5	inches	
6. Overall height of the car	135.0	cm.	53.0	inches	
7. Capacity of fuel tank (reserve included)	25	ltrs.	gall. U.S.	5.5	gall. Imp.
8. Seating Capacity.	4				
9. Weight. Total weight of the car with normal equipment, water, oil, and spare wheel but without fuel or repair tools:	606	kg.	1334.0	lbs.	

NOTE 2.

Differences in track caused by the use of other wheels with different rim widths when recognition is requested for the wheels concerned. Specify ground clearance relation to track and give drawing of two easily recognisable points at front and rear at which measurements taken. These ground clearance dimensions are only for information when checking the track, and do not in any way affect the eligibility of the car.



NOTE 3.

CONVERSION TABLE

1 inch/pouce	— 2.54	cm.	1 quart US	— 0.9464	ltrs.
1 foot/pied	— 30.4794	cm.	1 pint (imp)	— 0.568	ltrs.
1 sq. inch/pouce carre	— 6.452	cm. ²	1 gallon imp.	— 4.546	ltrs.
1 cubic inch/pouce cube	— 16.387	cm. ³	1 gallon US	— 3.785	ltrs.
1 pound/livre (lb)	— 453.593	gr.	1 hundred weight (cwt.)	— 50.802	kg.

Make Morris

Model Mini Minor

F.I.A. Rec.no. 5026

CHASSIS AND COACHWORK (Photographs A, B and C)

- 20. Chassis/body construction : ~~separate~~ / unitary construction
- 21. Unitary construction, material(s) Steel

SEPARATE CONSTRUCTION - MATERIALS

- 22. Chassis
- 23. Coachwork
- 24. Number of doors 2
- Material(s) Steel
- 25. Bonnet Steel
- 26. Boot Lid Steel
- 27. Rear Window Safety glass
- 28. Windscreen Toughened or laminated glass
- 29. Front door windows Safety glass
- 30. Rear door windows
- 31. Sliding system of door windows Horizontal channels
- 32. Material(s) of rear-quarter light Safety glass

ACCESSORIES AND UPHOLSTERY

- 38. Interior heating : yes - ~~no~~
- 39. Air conditioning : ~~yes~~ - no
- 40. Ventillation : yes - ~~no~~

41. Front seats, type of upholstery Leathercloth

42. Weight of front seat(s), complete with supports and rails, out of the car:

7.27 kg. 16.0 lbs.

43. Rear seats, type of upholstery Leathercloth

44. Front bumper, material(s) Steel Weight 2.15 kg. 4.75 lbs.

45. Rear bumper, material(s) Steel Weight 2.15 kg. 4.75 lbs.

WHEELS

50. Type Ventilated disc

51. Weight (per wheel, without tyre) 3.175 kg.

52. Method of attachment 4 studs

53. Rim diameter 254.0 mm.

54. Rim width 88.9 mm. 3.5 ins.

STEERING

60. Type Rack & Pinion

61. Servo-assistance : yes - no

62. Number of turns of steering wheel from lock to lock 2.33

63. In case of servo-assistance.



Make Morris

Model Mini Minor

F.I.A. Rec.no. 5026

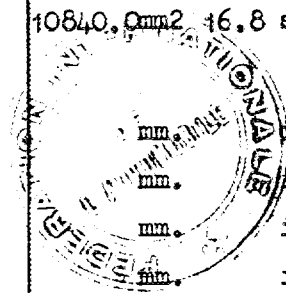
SUSPENSION

- 70. Front suspension (photograph D), type Independent
- 71. Type of spring Hydrolastic displacer unit
- 72. Stabiliser (if fitted)
- 73. Number of shock absorbers 2
- 74. Type Incorporated in hydrolastic unit
- 78. Rear suspension (photograph E), type Independent
- 79. Type of spring Hydrolastic displacer unit
- 80. Stabiliser (if fitted)
- 81. Number of shock absorbers 2
- 82. Type Incorporated in hydrolastic unit

BRAKES (photographs F and G)

- 90. Method of operation Hydrualic
- 91. Servo-assistance (if fitted), type
- 92. Number of hydraulic master cylinders 1

		FRONT		REAR	
93. Number of cylinders per wheel		2		1	
94. Bore of wheel cylinder(s)	20.32	mm. 0.8	inches	15.87	mm. 0.625 inches
Drum Brakes					
95. Inside diameter	177.8	mm. 7.0	inches	177.8	mm. 7.0 inches
96. Length of brake linings	171.5	mm. 6.75	inches	171.5	mm. 6.75 inches
97. Width of brake linings	38.1	mm. 1.5	inches	31.75	mm. 1.25 inches
98. Number of shoes per brake	2	mm.	inches	2	mm. inches
99. Total area per brake	13070.0	mm ² 20.25	sq.in.	10840.0	mm ² 16.8 sq.in.
Disc Brakes					
100. Outside diameter		mm.	inches	mm.	inches
101 Thickness of disc		mm.	inches	mm.	inches
102 Length of brake linings		mm.	inches	mm.	inches
103 Width of brake linings		mm.	inches	mm.	inches
104 Number of pads per brake					
105 Total area per brake		mm ²	sq.in.	mm ²	sq.in.



Make Morris

Model Mini Minor

F.I.A. Rec.no. 5026

ENGINE (photographs J and K)

130. Cycle 4 stroke 131. Number of cylinders 4

132. Cylinder Arrangement In line

133. Bore 62.94 mm. 2.478 in. 134. Stroke 68.26 mm. 2.687 in.

135. Capacity per cylinder 212.0 cm³ 12.93 cu.in.

136. Total cylinder capacity 848.0 cm³ 51.7 cu.in.

137. Material(s) of cylinder block Cast iron

138. Material(s) of sleeves (if fitted) Cast iron

139. Cylinder head, material(s) Cast iron Number fitted 1

140. Number of inlet ports 2 141. Number of exhaust ports 3

142. Compression ratio 8.3:1

143. Volume of one combustion chamber 24.5 cm³ 1.49 cu.in.

144. Piston, material Aluminium alloy 145. Number of rings 4

146. Distance from gudgeon pin centre line to highest point of piston crown
38.05 mm. 1.498 in.

147. Crankshaft : ~~cast iron~~ / Stamped 148. Type of crankshaft : integral/. ~~Yes~~...

149. Number of crankshaft main bearings 3

150. Material of bearing cap Cast iron

151. System of lubrication : ~~dry sump~~ / oil in sump

152. Capacity, lubricant 4.83 ltrs. 8.5 pts. Quarts U.S.

153. Oil cooler : ~~yes~~ / no 154. Method of engine cooling Pressurised water

155. Capacity of cooling system 3.55 ltrs. 6.25 pts. quarts U.S.

156. Cooling fan (if fitted) dia. 26.5 cm. 10.4 in.

157. Number of blades of cooling fan 16

Bearings

158. Crankshaft main, type Dia. 44.46/44.47 mm. 1.7505/1.751 in.

159. Connecting rod, big end Dia. 40.88/40.89 mm. 1.6254/1.6259 in.

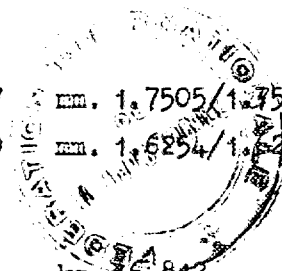
Weights

160. Flywheel (clean) 7.64 kg. 16.812 lbs.

161. Flywheel with clutch (all turning parts). 11.56 kg. 25.44 lbs.

162. Crankshaft 8.52 kg. 18.75 lbs. 163. Connecting rod 0.69 kg. 1.53 lbs.

164. Piston with rings and pin 0.28 kg. 0.625 lbs.



Date Morris

Model Mini Minor

F.I.A. Rec.no. 5026

FOUR STROKE ENGINES

- 170. Number of camshafts 1
 - 171. Location Cylinder block
 - 172. Type of camshaft drive Roller chain
 - 173. Type of valve operation OHV pushrod
- INLET (see page 4)*
- 180. Material(s) of inlet manifold Cast iron
 - 181. Diameter of valves 27.8 mm. 1.09 ins.
 - 182. Max. valve lift 7.14 mm. 0.28 in.
 - 183. Number of valve springs 1
 - 184. Type of spring Coil
 - 185. Number of valves per cylinder 1
 - 186. Tappet clearance for checking timing (cold) 0.3 mm. 0.012 ins.
 - 187. Valves open at (with tolerance for tappet clearance indicated) 5° BTDC
 - 188. Valves close at (with tolerance for tappet clearance indicated) 45° ABDC
 - 189. Air filter, type Combined air cleaner/silencer

EXHAUST (see page 4)

- 195. Material(s) of exhaust manifold Cast iron
- 196. Diameter of valves 25.4 mm. 1.00 ins.
- 197. Max. valve lift 7.14 mm. 0.28 in.
- 198. Number of valve springs 1
- 199. Type of spring Coil
- 200. Number of valves per cylinder 1
- 201. Tappet clearance for checking timing (cold) 0.3 mm. 0.012 ins.
- 202. Valves open at (with tolerance for tappet clearance indicated) 40° BBDC
- 203. Valves close at (with tolerance for tappet clearance indicated) 10° ATDC

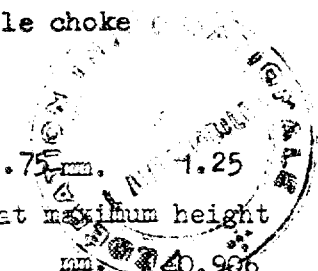
CARBURETION (photograph N)

- 210. Number of carburettors fitted 1
- 211. Type Variable choke
- 212. Make S.U.
- 213. Model HS2
- 214. Number of mixture passages per carburettor 1
- 215. Flange hole diameter of exit port(s) of carburettor 31.75 mm. 1.25 ins.
- 216. ~~Minimum diameter of venturi~~ minimum diam, with piston at maximum height 23.01 mm. 0.906 ins.

INJECTION (if fitted)

- 220. Make of pump
- 221. Number of plungers
- 222. Model or type of pump
- 223. Total number of injectors
- 224. Location of injectors
- 225. Minimum diameter of inlet pipe mm. ins.

* For additional information concerning two-stroke engines and super-charged engines, see page 13.

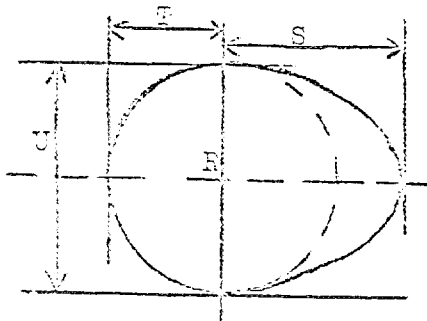


ENGINE ACCESSORIES

- 230. Fuel pump : ~~mechanical and/or~~ electric.
- 231. No.fitted 1
- 232. Type of ignition system **HP coil** 233. No.of distributors 1
- 234. No. of ignition coils 1 235. No. of spark plugs per cylinder 1
- 236. Generator, number fitted 1 237. Method of drive Wedge belt
- 238. Voltage of generator 12 volts. 239. Battery, number 1
- 240. Location **Luggage compartment**
- 241. Voltage of battery 12 volts

ENGINE AND CAR PERFORMANCES (as declared by manufacturer in catalogue)

- 250. Max. engine output 34 (type of horsepower: **BHP**) at 5,500 rpm
- 251. Max. rpm output at that figure .
- 252. Max torque 44 ft. lb. at 2900 rpm
- 253. Max speed of the car 120.7 km/hour 75.0 miles/hour



R = centre of camshaft.

Inlet cam

- S = 20.57
- T = 14.53
- U = 29.06

Exhaust cam

- S = 20.57
- T = 14.53
- U = 29.06

Technical drawing of a cam profile with dimensions in millimeters and inches. The drawing includes a circular stamp with the text "REGISTRATION" and "F.I.A. REC. NO. 5026".

- mm. 0.810 inches
- mm. 0.572 inches
- mm. 1.144 inches
- mm. 0.810 inches
- mm. 0.572 inches
- mm. 1.144 inches

Make Morris

Model Mini Minor

F.I.A. Rec.no. 5026

DRIVE TRAIN

CLUTCH

- 260. Type of clutch Diaphragm spring
- 261. No of plates 1
- 262. Dia. of clutch plates 18.0 cm. 7.125 ins..
- 263. Dia. of linings, inside 13.34 cm. 5.25 ins.
- outside 18.0 cm. 7.125 ins.
- 264. Method of operating clutch Hydraulic

GEAR BOX (photograph H)

- 270. Manual type, make BMC
- 271. No. of gear-box ratios forward 4
- 272. Synchronized forward ratios 3
- 273. Location of gear-shift Central in front of seats
- 274. Automatic, make type
- 275. No. of forward ratios
- 276. Location of gear shift

277.	Manual		Automatic		Alternative manual / automatic			
	Ratio	No.teeth	Ratio	No.teeth	Ratio	No.teeth	Ratio	No.teeth
1	3.627	$\frac{28}{19} \times \frac{32}{13}$	2.69		2.57	$\frac{23}{22} \times \frac{32}{13}$		
2								
3	2.172	$\frac{28}{19} \times \frac{28}{19}$	1.845		1.72	$\frac{23}{22} \times \frac{28}{17}$		
4	1.412	$\frac{28}{19} \times \frac{23}{24}$	1.46		1.25	$\frac{23}{22} \times \frac{24}{20}$		
5	1.0:1		1.0:1		1.0:1			
6								
re-verse	3.627	$\frac{28}{19} \times \frac{32}{18} \times \frac{18}{13}$	2.69		2.57	$\frac{23}{22} \times \frac{18}{13} \times \frac{32}{18}$		

- 278. Overdrive, type
- 279. Forward gears on which overdrive can be selected
- 280. Overdrive ratio

FINAL DRIVE

- 290. Type of final drive Helical spur gear
- 291. Type of differential Bevel
- 292. Type of limited slip differential (if fitted)
- 293. Final drive ratio 3.765:1 { 3.27
- Number of teeth 64/17 { 72/22

AUTOMATIC ONLY



Make Morris

Model Mini Minor

F.I.A. Rec.No. 5026

IMPORTANT - The conformity of the car with the following items of the present recognition form is to be disregarded during the scrutineering, when the vehicle has been entered in group 2 (Touring cars) or 3 (Grand Touring cars): 41, 72, 80, 91, 142, 143, 144, 145, 146, 153, 156, 157, 160, 161, 162, 163, 164, 182, 184, 186, 187, 188, 189, 199, 201, 202, 203, 212, 213, 215, 216, 222, 225, 230, 250, 251, 252, 253, and photographs I, M and N.

During the scrutineering of cars entered in group 4 (sports cars) only the following items of the present recognition form are to be taken into consideration: 1,2,3,9,20, 21, 22, 23, 24, 25, 26, 70, 71, 78, 79, 90, 130, 131, 132, 133, 134, 135, 136, 137, 138, 139, 140, 141, 147, 148, 149, 150, 158, 159, 170, 171, 172, 173, 185, 200, 270, 271, 274, 275, 290, 291, 292 and photographs A, B, D, E, F, G, H, J, K and O.

The vehicle described in this form has been subject to the following amendments:

on.....19.. rec.no.....List.....on.....19.. rec.no.....List.....
on.....19.. rec.no.....List.....on.....19.. rec.no.....List.....
on.....19.. rec.no.....List.....on.....19.. rec.no.....List.....
on.....19.. rec.no.....List.....on.....19.. rec.no.....List.....
on.....19.. rec.no.....List.....on.....19.. rec.no.....List.....

Optional equipment affecting preceding information. This to be stated together with reference number.

293. Final drive ratio 4.133:1
Number of teeth - 62/15

*3000 cc's
led otherwise*





MOTOR SPORT DIVISION
The Royal Automobile Club,
31 Belgrave Square, London, S.W.1

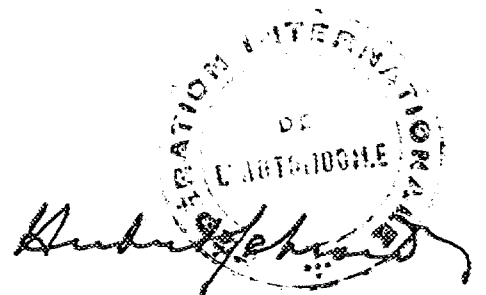
Manufacturer.....B.M.C.
Model.....Morris Mini Minor ..
F.I.A. Recognition No.....5026 ..
Amendment No.....1 ..

Amendment to Form of Recognition

FEDERATION INTERNATIONALE DE L'AUTOMOBILE

No.	Reference No.
	<u>OPTIONAL EQUIPMENT</u>
1.	Supplementary fuel tank - 5½ gall.
2.	Camshaft gear
3.	Crankshaft pulley-damper
4.	Final drive ratios - 3.44 3.9 4.26 4.35

Date amendment is valid from.....



Stamp of F.I.A./R.A.C.



MOTOR SPORT DIVISION
 The Royal Automobile Club,
 31 Belgrave Square, London, S.W.1

British Motor
 Manufacturer Corporation
 Model Morris Mini Minor
 F.I.A. Recognition No. 5026
 Amendment No. 2/1E

Amendment to Form of Recognition

FEDERATION INTERNATIONALE DE L'AUTOMOBILE

No.

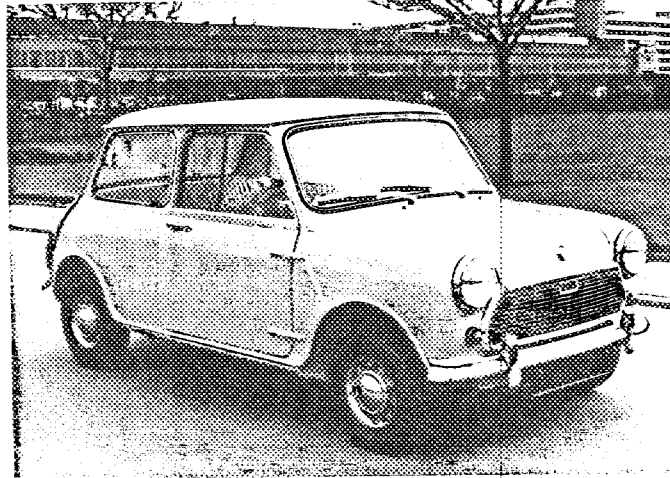
Reference No.

Evolution - Group 1

Morris Mini Minor MK II

Chassis Serial Nos:- M/A286

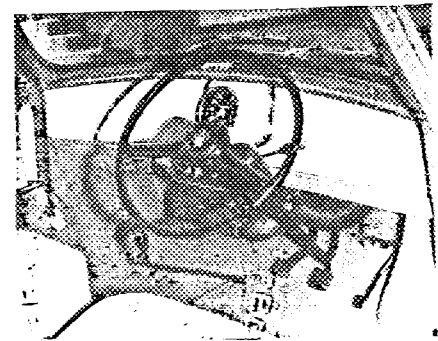
A.



B.



C.



Date amendment is valid from 1st May 1968
list 1968/6

Stamp of F.I.A./R.A.C.

Hubert [Signature]



MOTOR SPORT DIVISION
The Royal Automobile Club,
31 Belgrave Square, London, S.W.1

British Motor
Manufacturer Corporation
Model Morris Mini Minor
F.I.A. Recognition No. 5026
Amendment No. 3/2E

Amendment to Form of Recognition

FEDERATION INTERNATIONALE DE L'AUTOMOBILE

No.

Reference No.

Evolution - Group 1

Introduction of improved braking system

	<u>Front</u>	<u>Rear</u>
94. Bore of wheel cylinders -	23.8mm/0.937 inches.	19.05mm/0.75 inches.

Chassis Serial Nos:- M/A2S6

Date amendment is valid from.....

1st May 1968
list 1968/6



Stamp of F.I.A./R.A.C.

Hubert [Signature]



MOTOR SPORT DIVISION
 The Royal Automobile Club,
 31 Belgrave Square, London, S.W.1

Manufacturer BMC
 Model Morris Mini Minor
 F.I.A. Recognition No. 5026
 Amendment No. 4/2 V

Amendment to Form of Recognition

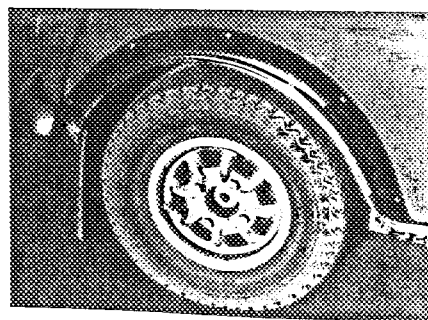
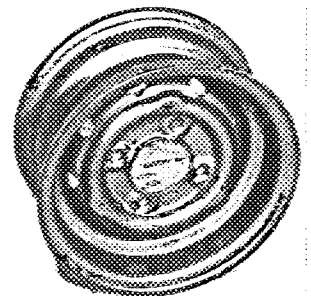
FEDERATION INTERNATIONALE DE L'AUTOMOBILE

No.

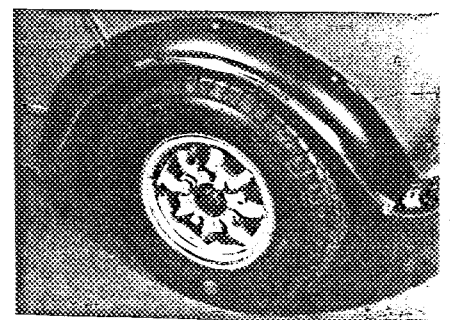
Reference No.

Variant - Group 2

1. 50. Road wheel - steel
 Part No. C-AHT 182
 51. 4.54kg./10.0. lbs.
 52. 4 studs and nuts
 53. 254.0 mm/10.0 inches
 54. 114.3 mm/4.5 inches
 2. Front track - 1251mm/49.625 inches
 3. Rear track - 1220.8mm/48.065 inches \pm (6.35mm/0.25 inches)
2. Wing extension kit - C-AJJ 3316A



Rear



Front

3. Thermostat blanking insert - 11G 176

Date amendment is valid from 1st Jun 1961
with 1,6 1,11

Stamp of F.I.A./R.A.C.



MOTOR SPORT DIVISION
The Royal Automobile Club,
31 Belgrave Square, London, S.W.1

Manufacturer BMC
Model Morris Mini Minor
F.I.A. Recognition No. 5026 | 5 | 3E
Amendment No. _____

Amendment to Form of Recognition

FEDERATION INTERNATIONALE DE L'AUTOMOBILE

No.	Reference No.	
		<u>Evolution - Group 1</u>
1.		Gearbox - 4 speed synchromesh
	271.	No of forward ratios - 4
	272.	Synchronised forward ratios - 4
		Introduced at Engine Nos. 8AJ/We/H 101 8AM/We/H 101

Date amendment is valid from 1/4/69
liste 69/2

[Handwritten signature and stamp]
Stamp of F.I.A./R.A.C.



MOTOR SPORT DIVISION
 The Royal Automobile Club,
 31 Belgrave Square, London, S.W.1

Manufacturer British Leyland
 Model Morris Mini Minor
 F.I.A. Recognition No. 5026
 Amendment No. 6/4E

(1)

Amendment to Form of Recognition
FEDERATION INTERNATIONALE DE L'AUTOMOBILE

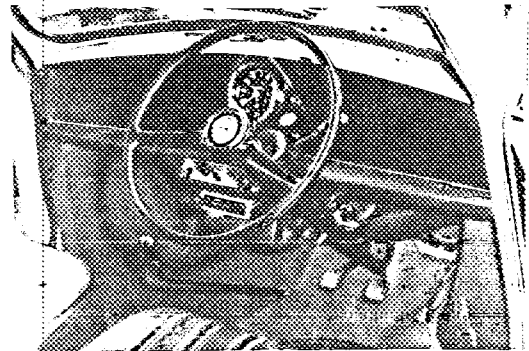
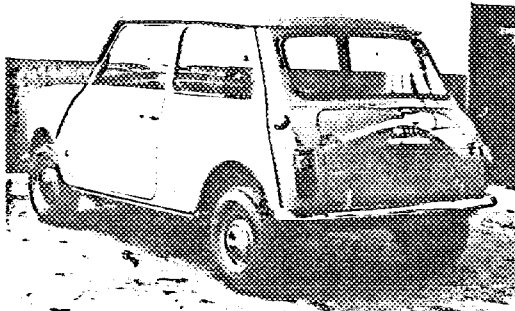
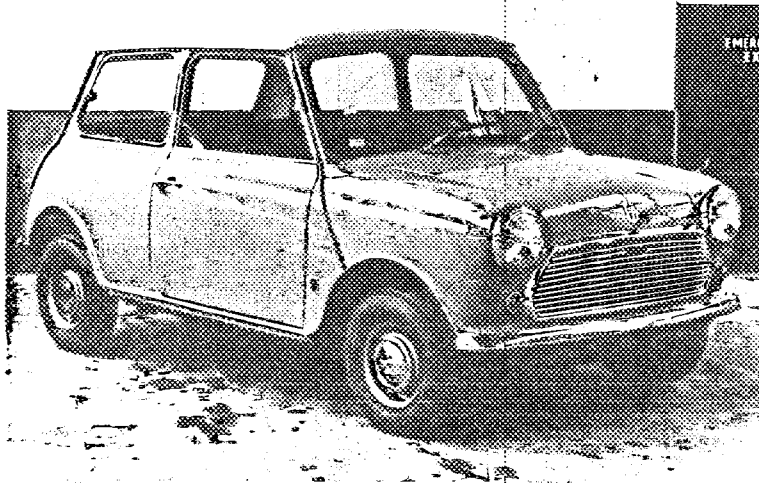
No.

Reference No.

Evolution - Group 1

Mini 850

Chassis No. XA2S1



Date amendment is valid from 1/6/70

List 70/4

Stamp of F.I.A./R.A.C.



MOTOR SPORT DIVISION
 The Royal Automobile Club,
 31 Belgrave Square, London, S.W.1

Manufacturer..... British Leyland
 Model..... Morris Mini Minor
 F.I.A. Recognition No. 5026
 Amendment No. 6/4E

(2)

Amendment to Form of Recognition

FEDERATION INTERNATIONALE DE L'AUTOMOBILE

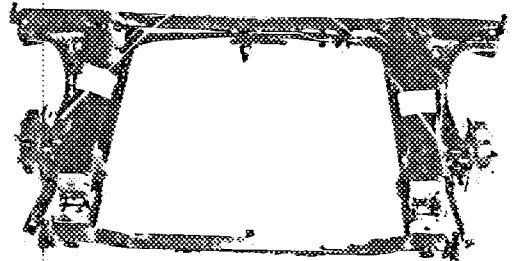
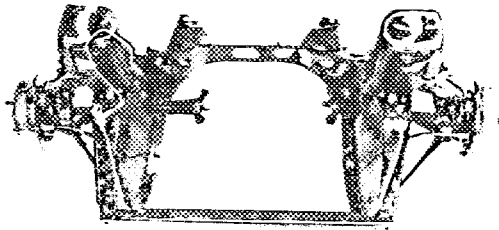
No.

Reference No.

Evolution - Group 1 (Contd.)

Mini 850

- 31. Sliding system of door windows - vertical winding
Suspension
 - 71. Type of spring - Rubber cone
 - 73. No. of shockabsorbers - 2
 - 74. Type - Hydraulic telescopic
 - 79. Type of spring - Rubber cone
 - 81. No. of shockabsorbers - 2
 - 82. Type - Hydraulic telescopic
- Front Rear



Date amendment is valid from 1/6/77 - 70/4

Stamp of F.I.A./R.A.C.



MOTOR SPORT DIVISION
The Royal Automobile Club,
31 Belgrave Square, London, S.W.1

Manufacturer British Leyland

Model Morris Mini Minor

F.I.A. Recognition No. 5026

Amendment No. 7/35 G.2 II

(3)

Amendment to Form of Recognition

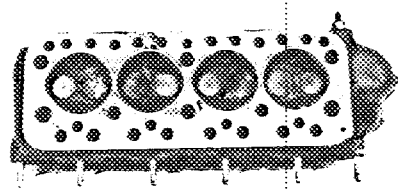
FEDERATION INTERNATIONALE DE L'AUTOMOBILE

No.

Reference No.

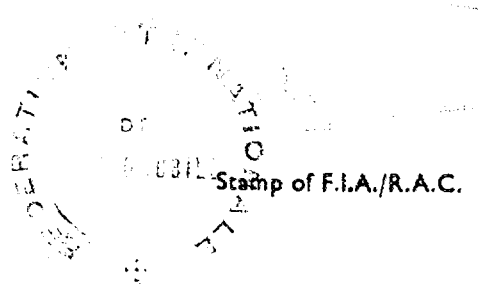
Variant - Group 2 (100 units)

Cylinder head - Part No. 12G 938



- 143. Volume of one combustion chamber: 21.4 cm³/1.29 cu. in.
- 181. Inlet valve diameter: 35.71 mm/1.406 inches
- 196. Exhaust valve diameter: 29.21 mm/1.15 inches

Date amendment is valid from 1/1/70 - 70/4.





MOTOR SPORT DIVISION
The Royal Automobile Club,
31 Belgrave Square, London, S.W.1

Manufacturer..... British Leyland
Model..... Morris Mini
F.I.A. Recognition No. 5026
Amendment No. **8/AV-GI**

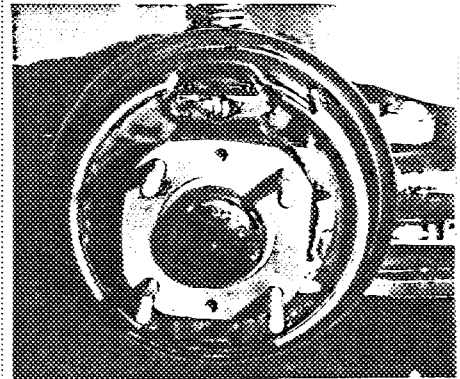
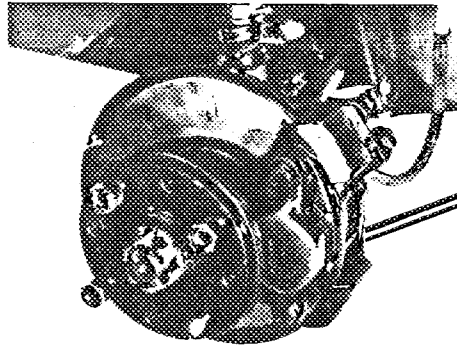
Amendment to Form of Recognition

FEDERATION INTERNATIONALE DE L'AUTOMOBILE

No.
1.

Reference No.
Brakes

Variant - Group 2



- 90. Method of operation - Hydraulic
- 91. Servo-assistance (if fitted), type - Diaphragm servo
- 92. Number of hydraulic master cylinders - 1

- 93. No. of cylinders per wheel
- 94. Bore of wheel cylinder(s)

	FRONT	REAR
	2	1
	44.75 mm 1.75"	15.875 mm 0.625"

Drum Brakes

- 95. Inside diameter
- 96. Length of brake linings
- 97. Width of brake linings
- 98. No. of shoes per brake
- 99. Total area per brake

	177.8 mm 7.0"
	171.5 mm 6.75"
	31.75 mm 1.25"
	?
	10887.0% 16.8sq.in

Disc Brakes

- 100. Outside diameter
- 101. Thickness of disc
- 102. Length of brake linings approx.
- 103. Width of brake linings approx.
- 104. No. of pads per brake
- 105. Total area per brake

	199.5 mm 7.9"
	8.52 mm 0.375"
	69.65 mm 2.75"
	62.65 mm 2.48"
	2
	5571.0% 8.64sq.in

Front track (± 6.35 mm / 0.25") 49.125" - 1247.8mm with 4.5" rim
Rear track (± 6.35 mm / 0.25") 47.31" - 1201.6mm with 4.5" rim

Date amendment is valid from **1/4/71**

Stamp of F.I.A./R.A.C.



MOTOR SPORT DIVISION
The Royal Automobile Club,
31 Belgrave Square, London, S.W.1

Manufacturer..... British Leyland
Model..... Morris Mini 848 cc
F.I.A. Recognition No. 5026
Amendment No. 9/5 E

Amendment to Form of Recognition

FEDERATION INTERNATIONALE DE L'AUTOMOBILE

No.	Reference No.
	<u>EVOLUTION GROUP 1.</u>
1.	156. Cooling Fan - Plastic Dia. 26.51 cm/10.44" 157. No. of Blades - 11

Date amendment is valid from.....

Stamp of F.I.A./R.A.C.



MOTOR SPORT DIVISION
The Royal Automobile Club,
31 Belgrave Square, London, S.W.1

Manufacturer BRITISH LEYLAND
Model MORRIS MINI
F.I.A. Recognition No. 5026
Amendment No. 10/6E

Amendment to Form of Recognition

FEDERATION INTERNATIONALE DE L'AUTOMOBILE

No.

Reference No.

EVOLUTION GROUP I

1. 270. Manual type Make British Leyland
271. No. of gear-box Ratios forward 4
272. Synchronized forward Ratios 4
273. Location of Gear-Shift Remote Control Central Floor

277.	MANUAL		ALTERNATIVE MANUAL	
	Ratio	No. Teeth	Ratio	No. Teeth
1.	3.52	$\frac{29}{17} \times \frac{31}{15}$	2.543	$\frac{25}{19} \times \frac{29}{15}$
2.	2.21	$\frac{29}{17} \times \frac{26}{20}$	1.73	$\frac{25}{19} \times \frac{25}{19}$
3.	1.43	$\frac{29}{17} \times \frac{21}{25}$	1.257	$\frac{25}{19} \times \frac{22}{23}$
4.	1.0:1		1.0:1	
Reverse	3.54	$\frac{29}{17} \times \frac{17}{15} \times \frac{33}{18}$	2.69	$\frac{25}{19} \times \frac{18}{15} \times \frac{29}{17}$

Date amendment is valid from.....

Stamp of F.I.A./R.A.C.



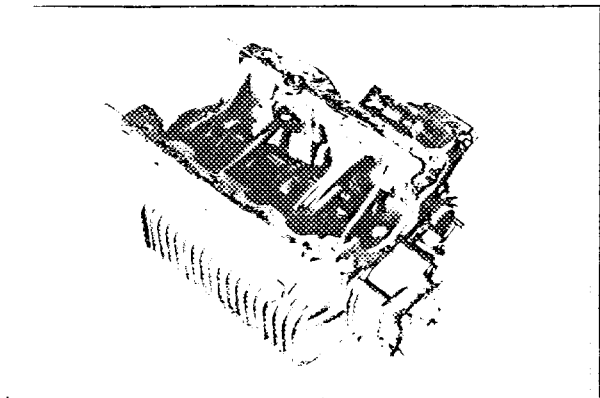
MOTOR SPORT DIVISION
The Royal Automobile Club,
31 Belgrave Square, London, S.W.1

Manufacturer BRITISH LEYLAND
MORRIS MINI
Model
F.I.A. Recognition No. 5026
Amendment No. 0/6.E

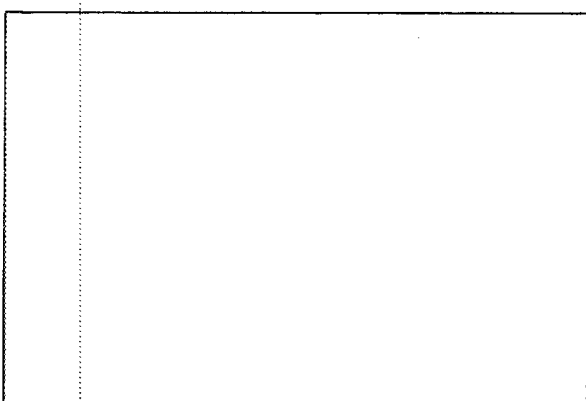
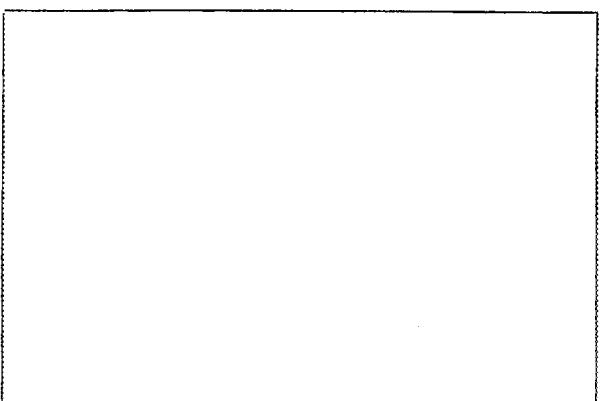
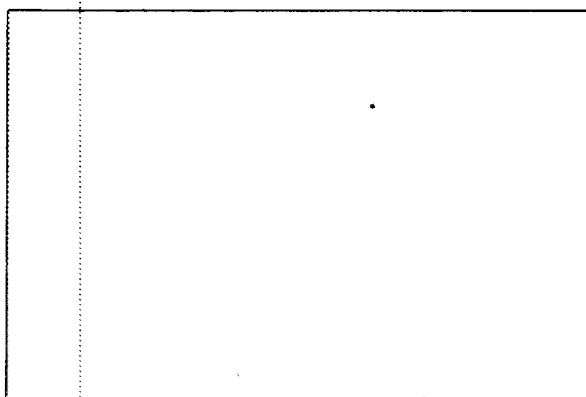
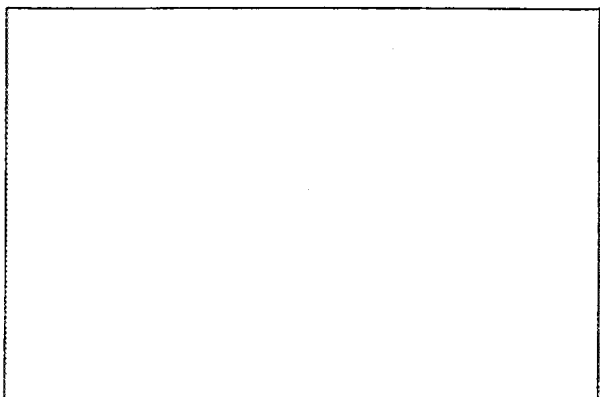
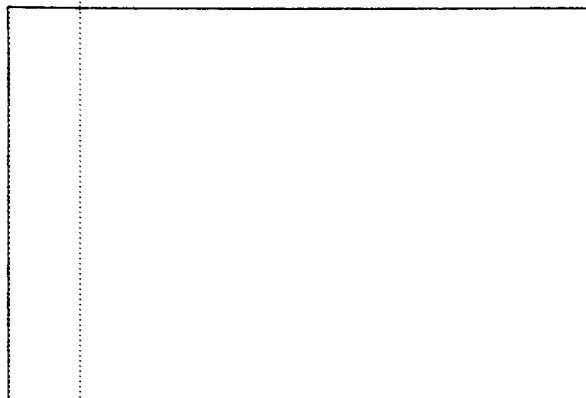
Amendment to Form of Recognition

FEDERATION INTERNATIONALE DE L'AUTOMOBILE

PHOTOGRAPHS MUST BE 3" x 2" AND A MATT FINISH



1. GEARBOX



Date amendment is valid from.....

Stamp of F.I.A./R.A.C.



MOTOR SPORT DIVISION
The Royal Automobile Club
 31 Belgrave Square, London SW1X 8QH

Manufacturer **BRITISH LEYLAND**
 Model **MORRIS MINI**

EXHIBITION STAMP
 F.I.A. Recognition No. 5026
 Amendment No. 11/7E
 00424 18.2.74
 INTERNATIONALE

Amendment to Form of Recognition

FEDERATION INTERNATIONALE DE L'AUTOMOBILE

VALID IN GROUP..... EVOLUTION GROUP 1

No.	Reference No.		
1.	230.	Fuel Pump	Mechanical S.U.
	231.	No. Fitted	1
2.	236.	Generator Type	Alternator No. Fitted 1
3.		Road Wheel	21A 2744
	2.	Front Track	
		1217.7% 47.94 inches (± 6.35 % / 0.25 inches)	
	3.	Rear Track	
		1177.7 % 46.37 inches (± 6.35 % / 0.25 inches)	

Date amendment is valid from 1.4.76

Stamp of F.I.A./R.A.C.



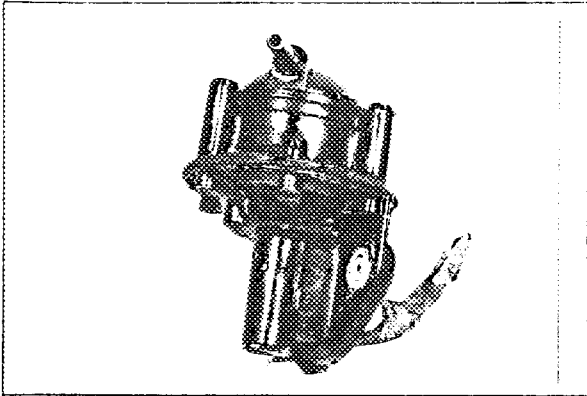
MOTOR SPORT DIVISION
The Royal Automobile Club
31 Belgrave Square, London SW1X 8QH

Manufacturer British Leyland
Model Morris Mini
F.I.A. Recognition No. 5026
Amendment No.

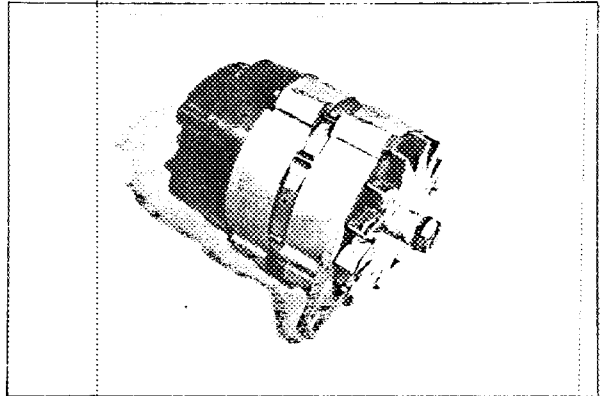
Amendment to Form of Recognition

FEDERATION INTERNATIONALE DE L'AUTOMOBILE

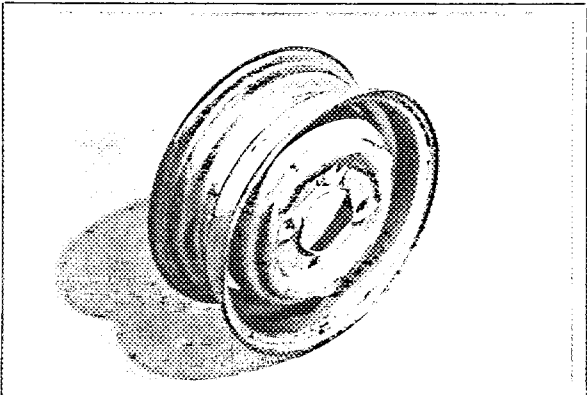
Photographs must be 3" x 2" and a matt finish



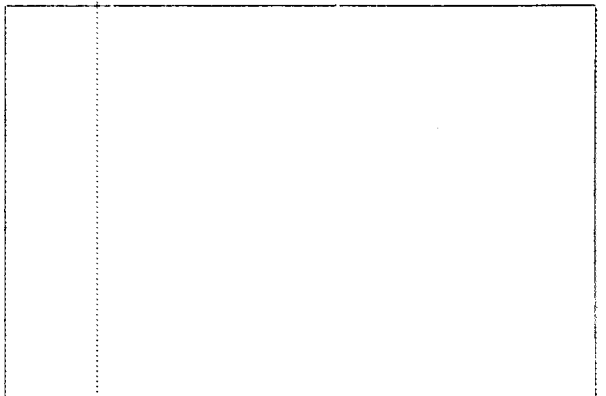
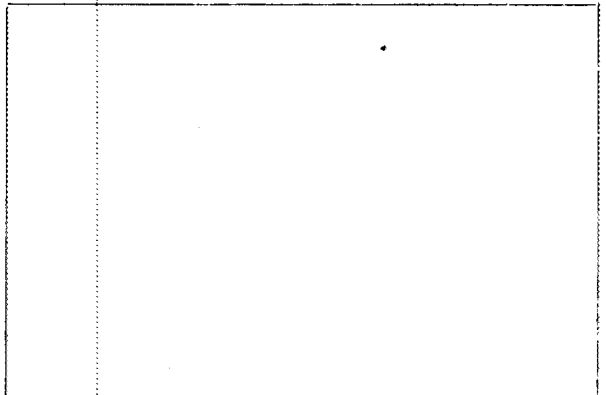
1. Fuel Pump



2. Alternator



3. Road Wheel



Date amendment is valid from

Stamp of F.I.A./R.A.C



MOTOR SPORT DIVISION
The Royal Automobile Club
 31 Belgrave Square, London SW1X 8QH

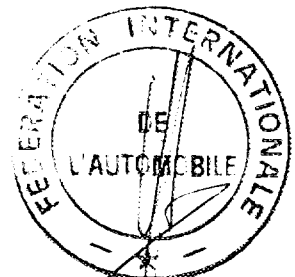
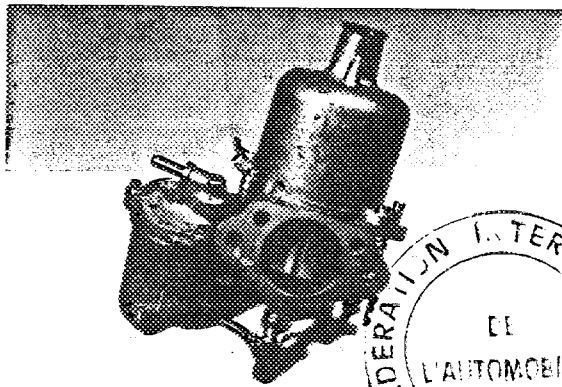
Manufacturer BRITISH LEYLAND
 Model MINI MINOR
 F.I.A. Recognition No. 5026
 Amendment No. 12/8 E

Amendment to Form of Recognition

FEDERATION INTERNATIONALE DE L'AUTOMOBILE

GROUP ONE - EVOLUTION

No.	Reference No.	
1.	<u>CARBURATION</u>	
	210.	Number of carburetters 1
	211.	Type Swing needle
	212.	Make SU
	213.	Model HS4
	214.	Number of mixture passages per carburetter 1
	215.	Flange hole diameter of exit port of carburetter 38.1m/m 1.5 ins
	216.	Minimum diameter of venturi with piston at maximum height 30.94m/m 1.218 ins
2.	<u>ENGINE PERFORMANCE</u>	
	250.	Max. engine output 37 BHP at 5500 RPM
	252.	Max. torque 43 lbs.ft at 2800 RPM



Stamp of F.I.A./R.A.C.

Date amendment is valid from 1.10.74



MORRIS - MINI MINOR

MARQUE ET MODELE

1/66 -

VALIDITE HOMOLOGATION

5026

FICHE NR.

Remise avec 4090

1 / 850

GROUPE / CLASSE

EXTENSIONS	DEBUT VALIDITE	DESCRIPTION	NOTES
1		RESERVOIR - COUPLE FINAL	
2/1E	5/68	MODELE MK 2	
3/2E	5/68	FREIN	
4/2V	1/69	INUSABLE	
5/3E	4/69	BOITE A VITESSES	
6/4E	4/70	MODELE MINI 850 - SUSPENSION	
7/3V	4/70	CLASSE	
8/4V	4/71	FREIN - VOIE	
9/5E		VENTILATEUR	
10/6E		BOITE A VITESSES - RAPPORTS	
11/7E		ALTERNATEUR - VOIE	
12/8E		CARBURATEUR	

Autres homologations du modèle

Vérifiée le 25/10/95 par [Signature] visée ce jour le _____ par _____