

SVENSKA BILSPORTFÖRBUNDET

F.I.A. Recognition No. *1467*

Group *II* Touring Cars



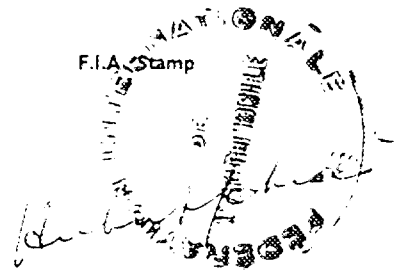
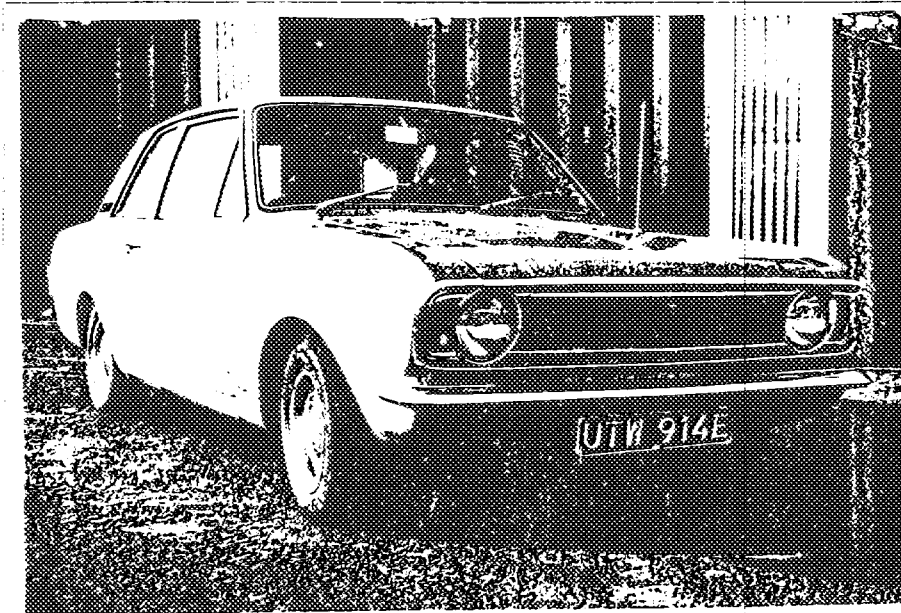
# ROYAL AUTOMOBILE CLUB

31, Belgrave Square, London, S.W.1

Form of recognition in accordance with appendix J to the International Sporting Code of the  
FEDERATION INTERNATIONALE DE L'AUTOMOBILE

Manufacturer	FORD MOTOR COMPANY LIMITED	Cylinder-capacity	1558	cm. <sup>3</sup>	95.2	in. <sup>3</sup>
Serial No. of chassis/body	BA91GK 43213	Model	LOTUS CORTINA (RHD or LHD)			
Serial No. of engine	LFS0001	Manufacturer	FORD			
Recognition is valid from	<i>1st April '67</i>	Manufacturer	LOTUS			
		List	<i>16/1</i>			
The manufacturing of the model described in this recognition form started on <i>1st FEBRUARY</i> 19 <i>67</i>						
and the minimum production of <i>1000</i> identical cars, in accordance with the specifications of						
this form was reached on <i>28th FEBRUARY</i> 19 <i>67</i>						

Photograph A.  $\frac{3}{4}$  view of car from front



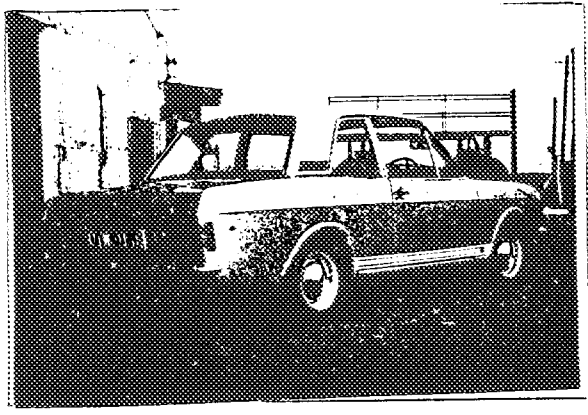
R.A.C. Stamp

Make FORD

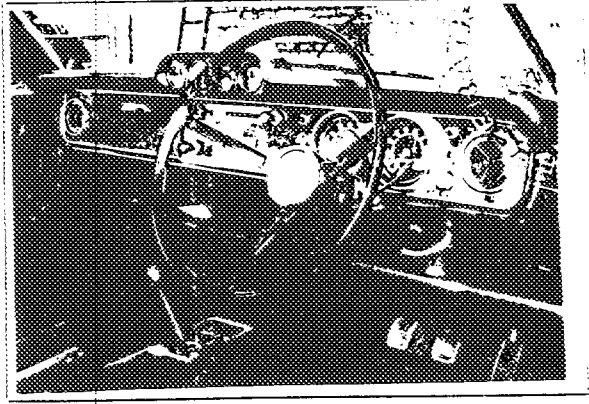
Model LOTUS CORTINA

F.I.A. Rec. No.

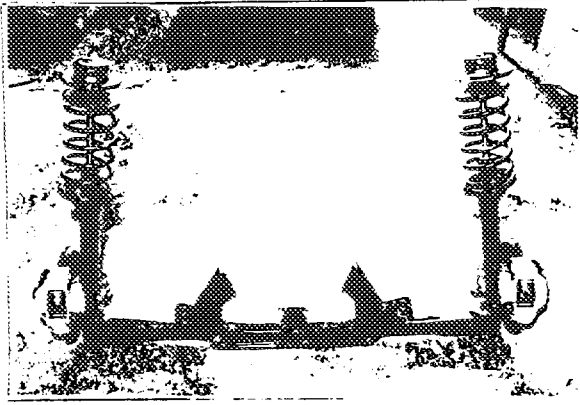
B



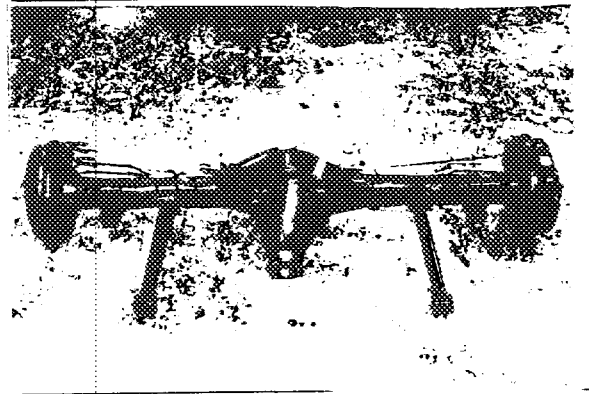
C



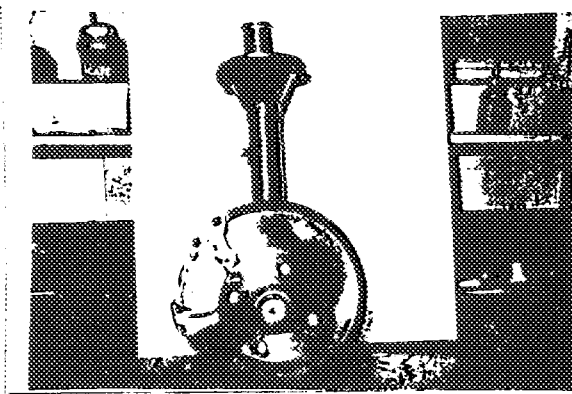
D



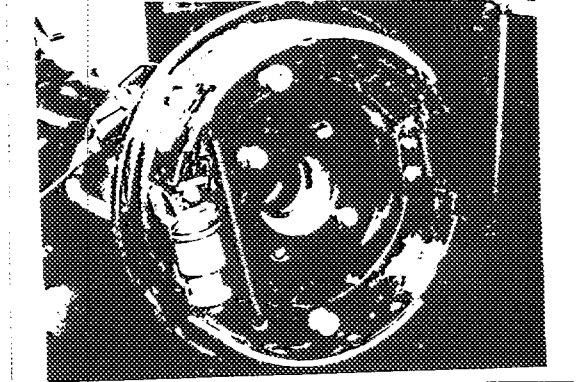
E



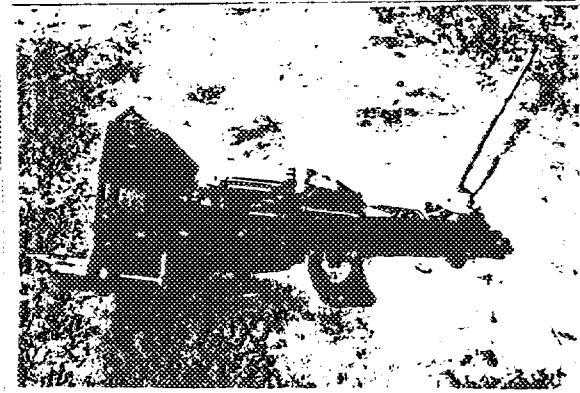
F



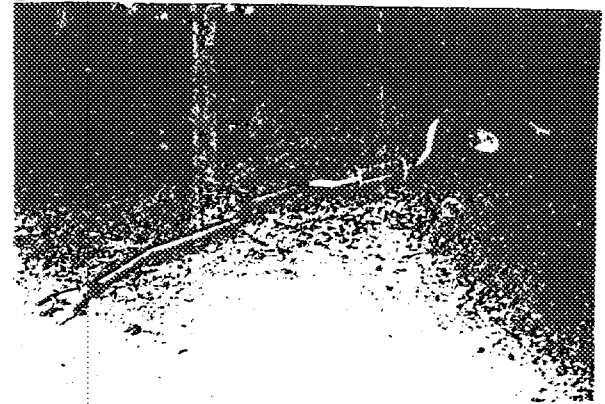
G



H



I



Make

FORD

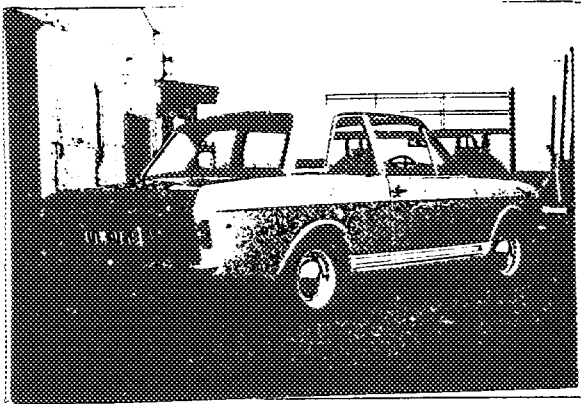
Model

LOTUS CORTINA

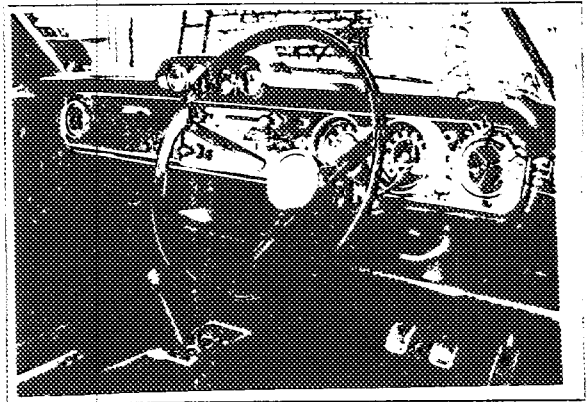
F.I.A. Rec. No.

1014 585

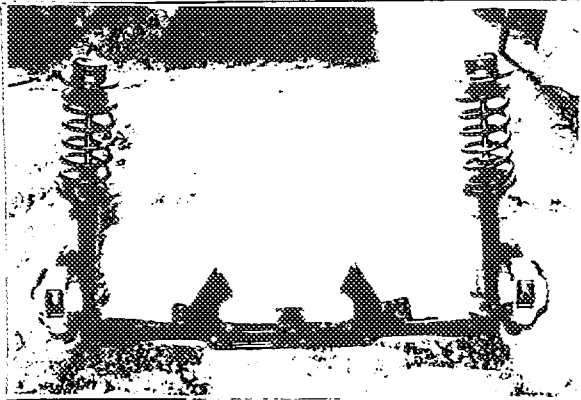
B



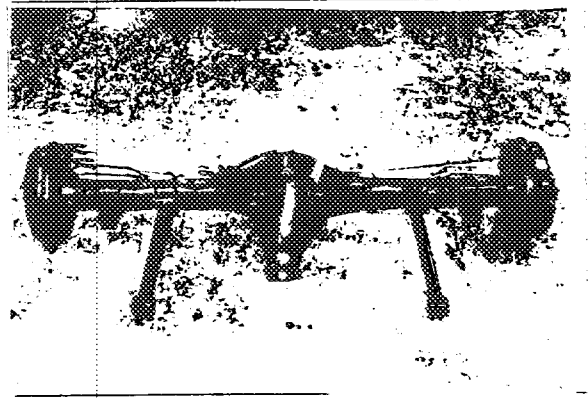
C



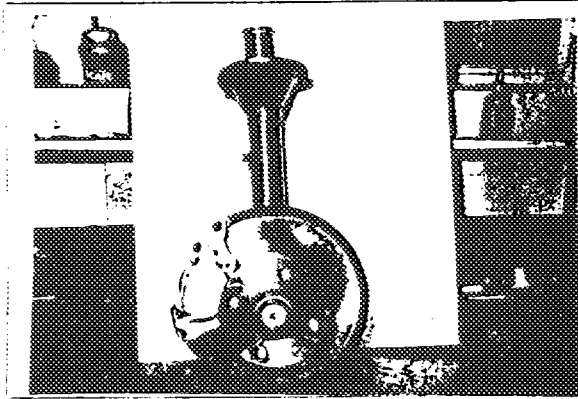
D



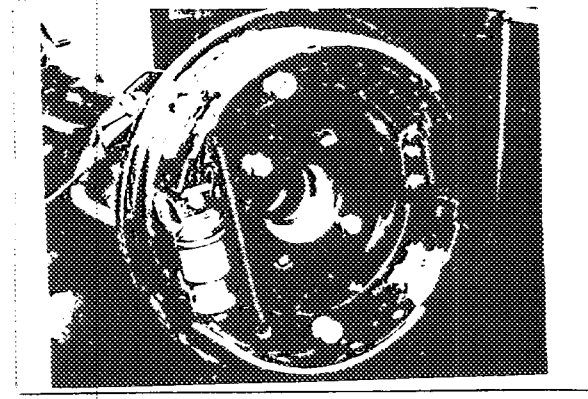
E



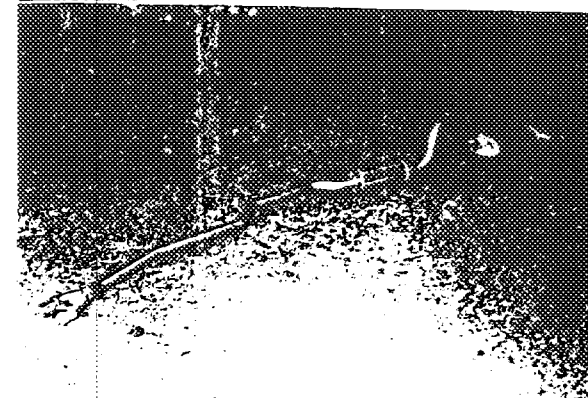
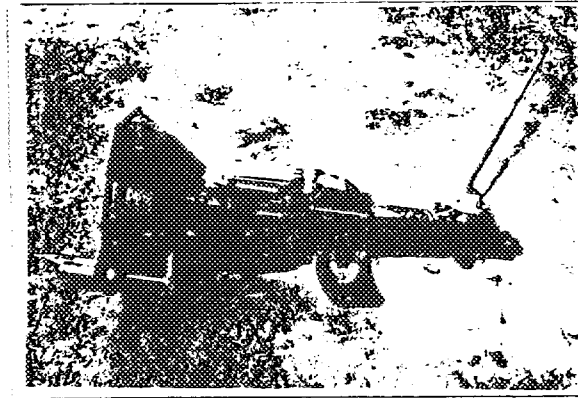
F



G



H



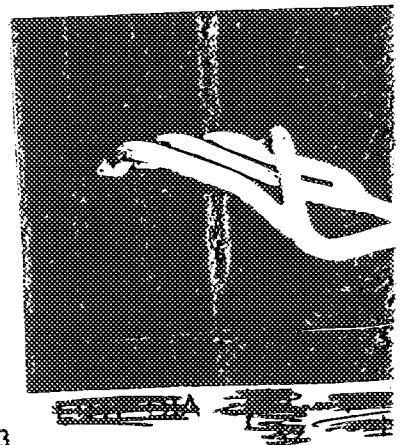
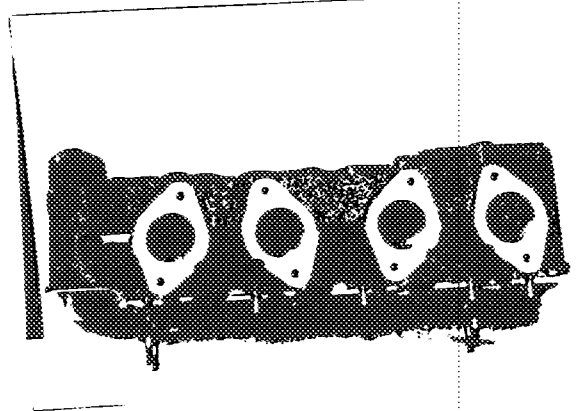
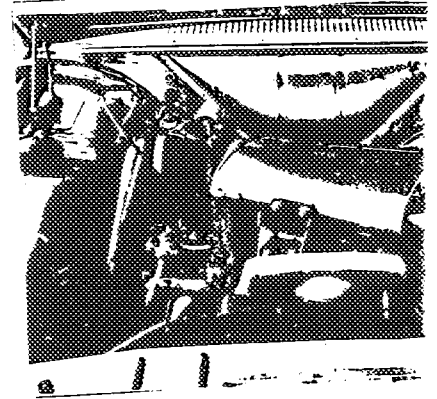
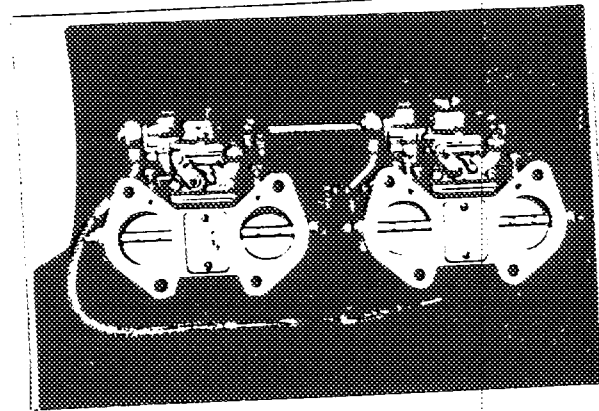
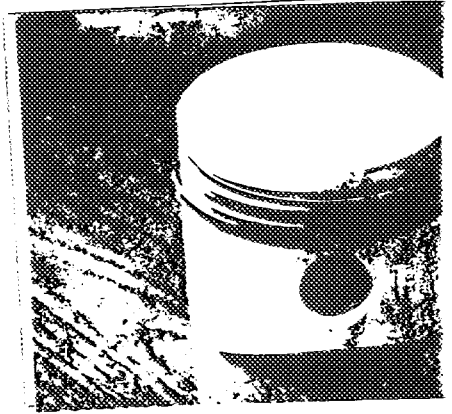
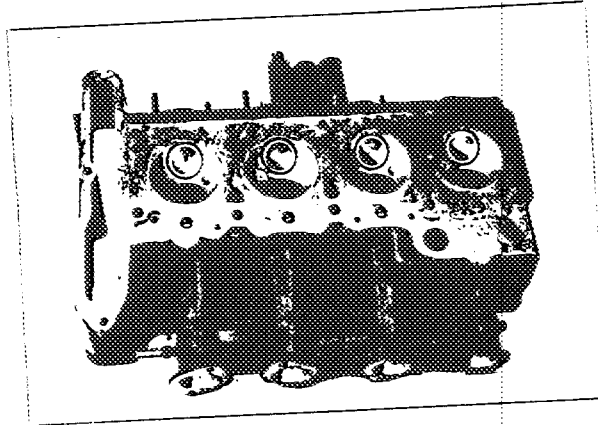
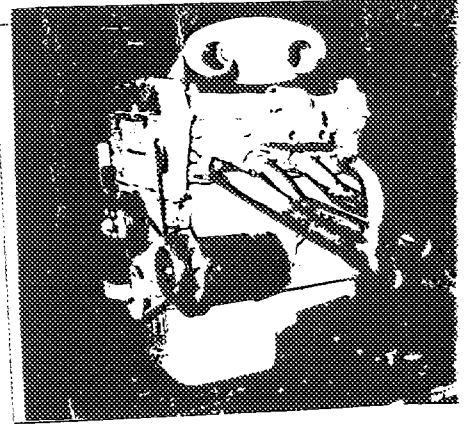
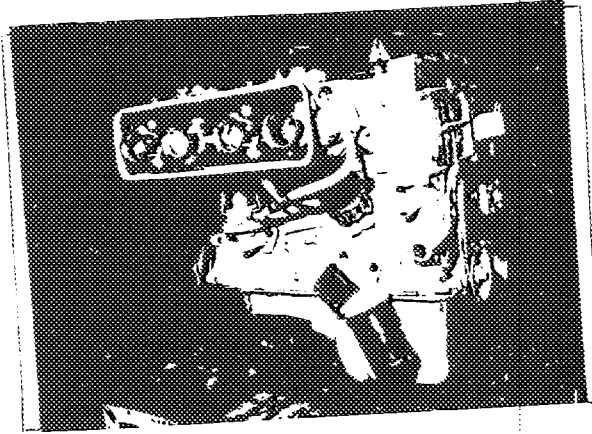
Make

FORD

Model

LOTUS CORTINA

F.I.A. Rec. No.



Make **FORD**

Model **LOTUS CORTINA**

F.I.A. Rec. No.

Drawing inlet manifold ports, side of cylinderhead. Indicate scale or dimensions and manufacturing tolerance.

**Integral with head.**

---

Drawing of entrance to inlet port of cylinderhead. Indicate scale or dimensions and manufacturing tolerance.

1-57  
40.0 mm

---

Drawing of exhaust manifold ports, side of cylinderhead. Indicate scale or dimensions and manufacturing tolerance.

1-4  
35.55

---

Drawing of exit to exhaust port of cylinderhead. Indicate scale or dimensions and manufacturing tolerance.

1-208  
30.7

+ .030 in.



Make FORD

Model LOTUS CORTINA

F.I.A. Rec. No.

**NOTE 1.**

All dimensions must be given in two measuring systems, see Note 3.

**CAPACITIES AND DIMENSIONS**

- |                |                     |             |             |
|----------------|---------------------|-------------|-------------|
| 1. Wheelbase   |                     | 2489 mm.    | 98.0 inches |
| 2. Front track | $\pm 25.4\text{mm}$ | 1.0in       |             |
|                | 1384 mm.            | 54.5 inches |             |
| 3. Rear track  | $\pm 25.4\text{mm}$ | 1.0in       |             |
|                | 1346 mm.            | 53.0 inches |             |

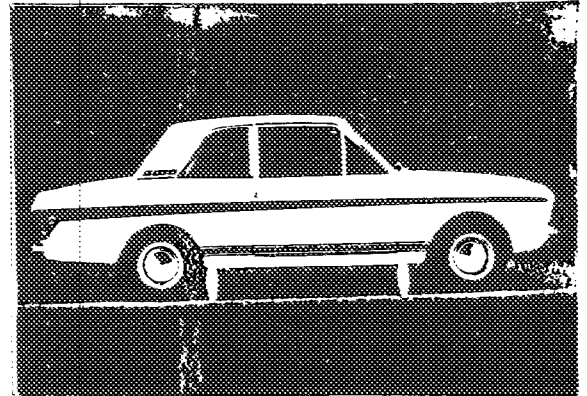
Measurement from rocker panel to road

**FRONT**

215.9mm  
8.5in

**REAR**

234.86mm  
See Note 2 9.25in



- |  |             |                 |                 |
|--|-------------|-----------------|-----------------|
| 4. Overall length of the car   |             | 426.7 cm.       | 168.0 inches    |
| 5. Overall width of the car  |             | 164.8 cm.       | 64.9 inches     |
| 6. Overall height of the car   |             | 136.9 cm.       | 53.9 inches     |
| 7. Capacity of fuel tank (reserve included)  |             |                 |                 |
|  | 45.46 ltrs. | 12.0 gall. U.S. | 10.0 gall. Imp. |
| 8. Seating Capacity.   | 4           |                 |                 |
| 9. Weight. Total weight of the car with normal equipment, water, oil, and spare wheel but without fuel or repair tools : |             |                 |                 |
|  | 820 kg.     | 1802 lbs.       | 16.1 cwt.       |

**NOTE 2.**

Differences in track caused by the use of other wheels with different rim widths must be stated when recognition is requested for the wheels concerned. Specify ground clearance in relation to the track and give drawing of two easily recognisable points at front and rear at which measurements are taken. These ground clearance dimensions are only for information when checking the track and can in no way affect the eligibility of the car.

**NOTE 3.**

**CONVERSION TABLE**

1 inch/pouce	— 2.54	cm.	1 quart US	— 0.9464	ltrs.
1 foot/pied	— 30.4794	cm.	1 pint (pt)	— 0.568	ltrs.
1 sq. inch/pouce carre	— 6.452	cm. <sup>2</sup>	1 gallon Imp.	— 4.546	ltrs.
1 cubic inch/pouce cube	— 16.387	cm. <sup>3</sup>	1 gallon US	— 3.785	ltrs.
1 pound/livre (lb)	— 453.593	gr.	1 hundred weight (cwt.)	— 50.802	kg.

Make **FORD**

Model **LOTUS CORTINA**

F.I.A. Rec. No. \_\_\_\_\_

CHASSIS AND COACHWORK (Photographs A, B and C)

- 20. Chassis/body construction ~~separate~~/unitary construction
- 21. Unitary construction, material(s) **Steel**
- 22. Separate construction, Material(s) of chassis **Steel**
- 23. Material(s) of coachwork **Steel**
- 24. Number of doors **2** Material(s) **Steel**
- 25. Material(s) of bonnet **steel**
- 26. Material(s) of boot lid **steel**
- 27. Material(s) of rear-window **toughened glass**
- 28. Material(s) of windscreen **laminated or toughened glass**
- 29. Material(s) of front-door windows **toughened glass**
- 30. Material(s) of rear-door windows **N/A**
- 31. Sliding system of door windows **rotating handle**
- 32. Material(s) of rear-quarter light **toughened glass**

ACCESSORIES AND UPHOLSTERY

- 38. Interior heating : ~~yes~~ **optional**
- 39. Air conditioning : ~~yes~~ — no
- 40. Ventilation : yes — ~~yes~~
- 41. Front seats, type of seat and upholstery **PVC**
- 42. Weight of front seat(s), complete with supports and rails, out of the car :
 

<b>9.95</b> kg.	<b>17.5</b> lbs.
-----------------	------------------
- 43. Rear seats, type of seat and upholstery **PVC**
- 44. Front bumper, material(s) **steel** Weight **2.6** kg. **5.75** lbs.
- 45. Rear bumper, material(s) **steel** Weight **2.5** kg. **5.35** lbs.

WHEELS

- 50. Type **pressed steel disc 'J' rim section.**
- 51. Weight (per wheel, without tyre) **5.94** kg. **13. 2oz** lbs.
- 52. Method of attachment **4 taper nuts fixing**
- 53. Rim diameter **330** mm. **13.00** ins. 54. Rim width **139.7** mm. **5.50** ins.

STEERING

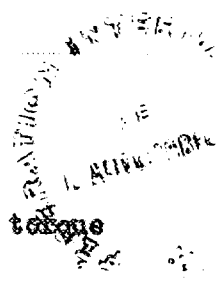
- 60. Type **recirculating ball**
- 61. Servo-assistance : yes ~~yes~~ **no**
- 62. Number of turns of steering wheel from lock to lock **3**
- 63. In case of servo-assistance **N/A**



Make **FORD**

Model **LOTUS CORTINA**

F.I.A. Rec. No.



**SUSPENSION**

- 70. Front suspension (photograph D), type **Independent McPherson combined with torque reactor and stabiliser bar.**
- 71. Type of spring **Coil**
- 72. Stabiliser (if fitted) **Integral with lower arms**
- 73. Number of shock absorbers **2**
- 74. Type **Integrated suspension leg, telescopic double acting.**
- 78. Rear suspension (photograph E), type **Hotchkiss drive.**
- 79. Type of spring **Multi-leaf semi elliptic**
- 80. Stabiliser (if fitted) **trailing links**
- 81. Number of shock absorbers **2**
- 82. Type **Telescopic double acting.**

**BRAKES** (photographs F and G)

- 90. Method of operation **Hydraulic**
- 91. Servo-assistance (if fitted), type **Hydraulic vacuum.**
- 92. Number of hydraulic master cylinders **single or dual.**

93. Number of cylinders per wheel	<b>2</b>	<b>FRONT</b>	<b>/</b>	<b>REAR</b>
94. Bore of wheel cylinder(s)	<b>54.0</b> mm.	<b>2.126</b> inches		<b>19.05</b> mm. <b>0.75</b> inches

**Drum Brakes**

95. Inside diameter	mm.	inches	<b>228.6</b> mm.	<b>9.00</b> inches
96. Length of brake linings	mm.	inches	<b>218.9</b> mm.	<b>8.62</b> inches
97. Width of brake linings	mm.	inches	<b>44.45</b> mm.	<b>1.75</b> inches
98. Number of shoes per brake				
99. Total area per brake	mm. <sup>2</sup>	sq. in.	<b>19464</b> mm. <sup>2</sup>	<b>30.17</b> sq. in.

**Disc Brakes**

100. Outside diameter	<b>244.0</b> mm.	<b>9.6</b> inches	mm.	inches
101. Thickness of disc	<b>12.7</b> mm.	<b>0.500</b> inches	mm.	inches
102. Length of brake linings	<b>76.2</b> mm.	<b>3.0</b> inches	mm.	inches
103. Width of brake linings	<b>53.34</b> mm.	<b>2.1</b> inches	mm.	inches
104. Number of pads per brake		<b>2</b>		
105. Total area per brake	<b>*6670</b> mm. <sup>2</sup>	<b>10.34</b> sq. in.	mm. <sup>2</sup>	sq. in.

7

\* nominal



Make FORD

Model LOTUS CORTINA

F.I.A. Rec. No.



ENGINE (photographs J and K)

- |   |   |                     |
|---|---|---------------------|
| 130. Cycle Four stroke  | 131. Number of cylinders  | 4                   |
| 132. Cylinder Arrangement & In line   |   |                     |
| 133. Bore 82.55 mm. 3.25 in.  | 134. Stroke 72.75 mm.   | 2.875 in.           |
| 135. Capacity per cylinder  | 389.0 cm. <sup>3</sup>  | 23.8 cu. in.        |
| 136. Total cylinder capacity  | 1558 cm. <sup>3</sup>   | 95.2 cu. in.        |
| 137. Material(s) of cylinder block Cast iron                                | 138. Material(s) of sleeves (if fitted)                         | None                |
| 139. Cylinder head, material(s) Aluminium alloy                             | Number fitted   | 1                   |
| 140. Number of inlet ports 4  | 141. Number of exhaust ports                                    | 4                   |
| 142. Compression ratio 9.8:1 ± 0.3  |   |                     |
| 143. Volume of one combustion chamber                                       | 43.3 ± 2.5 cm. <sup>3</sup>                                     | 1.704 ± 2.5 cu. in. |
| 144. Piston, material aluminium alloy                                       | 145. Number of rings  | 3                   |
| 146. Distance from gudgeon pin centre line to highest point of piston crown | 39.5 mm.  | 1.551 in.           |
| 147. Crankshaft: moulded/ <del>scamper</del>                                | 148. Type of crankshaft: integral/ <del>cast with balance</del> | weig                |
| 149. Number of crankshaft main bearings 5                                   |   |                     |
| 150. Material of bearing cap cast iron.                                     |   |                     |
| 151. System of lubrication: <del>oil sump</del> /oil in sump                |   |                     |
| 152. Capacity, lubricant 3.97 ltrs. 7.0 pts.                                | 8.4   | quarts U.S.         |
| 153. Oil cooler: <del>yes</del> /no   | 154. Method of engine cooling                                   | Water and fan       |
| 155. Capacity of cooling system 5.81 ltrs. 10.5 pts.                        | 6.3   | quarts U.S.         |
| 156. Cooling fan (if fitted) dia.   | 27.94 cm.   | 11.0 in.            |
| 157. Number of blades of cooling fan 1 or 2                                 |   |                     |

Bearings

- |   |      |             |            |
|---|------|-------------|------------|
| 158. Crankshaft main, type copper lead        | dia. | 53.993 m.m. | 2.125 in.  |
| 159. Connecting rod big end, type copper lead | dia. | 49.205 m.m. | 1.9372 in. |

Weights

- |   |                              |            |
|---|------------------------------|------------|
| 160. Flywheel (clean)                         | 7.0 kg.                      | 15.5 lbs.  |
| 161. Flywheel with clutch (all turning parts) | 13.0 kg.                     | 29 lbs.    |
| 162. Crankshaft 11.0 kg. 24.2 lbs.            | 163. Connecting rod .590 kg. | 1 lbs. 5oz |
| 164. Piston with rings and pin                | 513.5 kg.                    | 1.13 lbs.  |

Make **FORD** Model **LOTUS CORTINA** F.I.A. Rec. No.

**FOUR STROKE ENGINES**

170. Number of camshafts **3** 171. Location **2 in cylinder head**  
172. Type of camshaft drive **chain** **1 in cylinder block(idler)**  
173. Type of valve operation **O.H.C. & tappetu.**

**INLET** (see page 4)\*

180. Material(s) of inlet manifold **Aluminium alloy**  
181. Diameter of valves **38.86 mm.** **1.53 ins.**  
182. Max. valve lift **8.89mm.** **.350 in.** 183. Number of valve springs **2**  
184. Type of spring **Coil** 185. Number of valves per cylinder **2**  
186. Tappet clearance for checking timing (cold) **.254 mm.** **.010 ins.**  
187. Valves open at (with tolerance for tappet clearance indicated) **26° B.T.D.C.**  
188. Valves close at (with tolerance for tappet clearance indicated) **66° A.B.D.C.**  
189. Air filter, type **paper element**

**EXHAUST** (see page 4)\*

195. Material(s) of exhaust manifold **steel**  
196. Diameter of valves **33.66 mm.** **1.325 ins.**  
197. Max. valve lift **8.89 mm.** **.350 in.** 198. Number of valve springs **2**  
199. Type of spring **Coil** 200. Number of valves per cylinder **2**  
201. Tappet clearance for checking timing (cold) **.254 mm.** **.010 ins.**  
202. Valves open at (with tolerance for tappet clearance indicated) **66° B.B.D.C.**  
203. Valves close at (with tolerance for tappet clearance indicated) **26° A.T.D.C.**

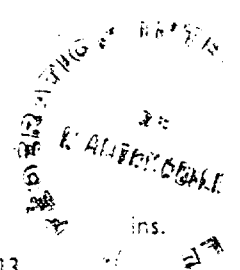
**CARBURETION** (photograph N)

210. Number of carburettors fitted **2** 211. Type **Horizontal**  
212. Make **Weber** 213. Model **40 DCOE 31**  
214. Number of mixture passages per carburettor **2**  
215. Flange hole diameter of exit port(s) of carburettor **40 mm.** **1.575 ins.**  
216. Minimum diameter of venturi/minimum diam., with piston at maximum height (example: SU) **30-33 mm.** **1.18-1.30 ins.**

**INJECTION** (if fitted)

220. Make of pump 221. Number of plungers  
222. Model or type of pump 223. Total number of injectors  
224. Location of injectors  
225. Minimum diameter of inlet pipe mm. **ins.**

\* For additional information concerning two-stroke engines and super-charged engines, see page 13.



Make **FORD**

Model **LOTUS CORTINA**

F.I.A. Rec. No. \_\_\_\_\_

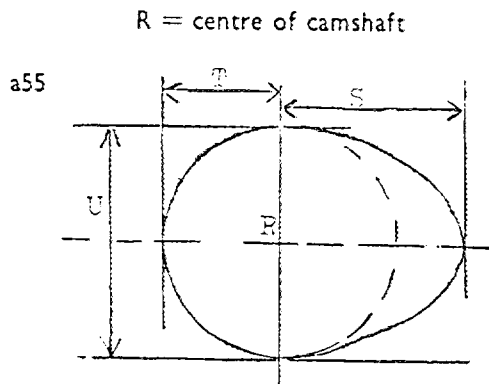
**ENGINE ACCESSORIES**

- 230. Fuel pump : mechanical ~~3333~~ /or electrical
- 231. No. fitted **1**
- 232. Type of ignition system **battery and coil**
- 233. No. of distributors **1**
- 234. No. of ignition coils **1**
- 235. No. of spark plugs per cylinder **1**
- 236. Generator, type : dynamo/alternator—number fitted **1**
- 237. Method of drive **belt via crankshaft pulley.**
- 238. Voltage of generator **12** volts
- 239. Battery, number **1**
- 240. Location **Right hand side of luggage compartment**
- 241. Voltage of battery **12** volts



**ENGINE AND CAR PERFORMANCES** (as declared by manufacturer in catalogue)

- 250. Max. engine output **115** (type of horsepower: **b.h.p.**) at **6,000** r.p.m.
- 251. Max. r.p.m. **6500** output at that figure **105 b.h.p.**
- 252. Max. torque **106 lbs/ft** at **4,500** r.p.m.
- 253. Max. speed of the car \_\_\_\_\_ km./hour \_\_\_\_\_ miles/hour  
**not declared by Manufacturer in catalogue.**



**Inlet cam**

S =	24.10	mm.	.950	inches
T =	15.22	mm.	.600	inches
U =	30.50	mm.	1.20	inches

**Exhaust cam**

S =	24.10	mm.	.950	inches
T =	15.22	mm.	.600	inches
U =	30.50	mm.	1.20	inches

Make **FORD**

Model **LOTUS CORTINA**

F.I.A. Rec. No.

DRIVE TRAIN

CLUTCH

- 260. Type of clutch **Single dry plate diaphragm** 261. No. of plates **1**
- 262. Dia. of clutch plates **20.32** cm. **8.00** ins.
- 263. Dia. of linings, inside **146.05** cm. **5.75** ins.
- outside **20.32** cm. **8.00** ins.
- 264. Method of operating clutch **Hydraulic**

GEAR BOX (photograph H)

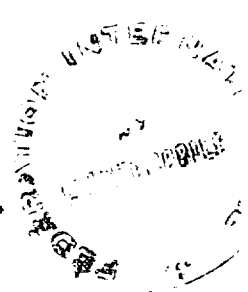
- 270. Manual type, make **Ford** Method of operation **Manual**
- 271. No. of gear-box ratios forward **4** 272. Synchronized forward ratios **4**
- 273. Location of gear-shift **centre floor control.**
- 274. Automatic, make **N/A** type **N/A**
- 275. No. of forward ratios **N/A** 276. Location of gear shift **N/A**

277.	Manual		Automatic		Alternative manual/automatic			
	Ratio	No. teeth	Ratio	No. teeth	Ratio	No. teeth	Ratio	No. teeth
1	2.972	32 x 17			2.51	$\frac{21}{18} \times \frac{17}{32}$	2.296	28 x 31
2	2.010	28 x 22			1.64	$\frac{21}{28} \times \frac{22}{27}$	1.697	27 x 28
3	1.397	23 x 26			1.23	$\frac{21}{28} \times \frac{26}{24}$		28 x 28
4	1.000	19 x 30			1.000	Direct	1.28	21 x 22
5	Constant	$\frac{30}{19}$					1.00	28 x 24
6							1.00	21 x 25
reverse	3.324	40x22x19			2.807	$\frac{40}{19} \times 22$	2.807	Direct

- 278. Overdrive, type **N/A**
- 279. Forward gears on which overdrive can be selected **N/A**
- 280. Overdrive ratio **N/A**

FINAL DRIVE

- 290. Type of final drive **Semi floating hypoid** 291. Type of differential **2 pinion.**
- 292. Type of limited slip differential (if fitted) **Salisbury four pinion.**
- 293. Final drive ratio **3.77:1 4.1:1** Number of teeth **34/9 = 33/8**



Make **FORD**

Model **LOTUS CORTINA**

F.I.A. Rec. No.

**IMPORTANT**—The conformity of the car with the following items of the present recognition form is to be disregarded during the scrutineering, when the vehicle has been entered in group 2 (Touring cars) or 3 (Grand Touring cars) : 41, 72, 80, 91, 142, 143, 144, 145, 146, 153, 156, 157, 160, 161, 162, 163, 164, 182, 186, 187, 188, 189, 201, 202, 203, 212, 213, 215, 216, 222, 225, 230, 250, 251, 252, 253, 255 photographs I, M and N and page 4.

During the scrutineering of cars entered in group 4 (Sportscars) only the following items of the present recognition form are to be taken into consideration : 1, 2, 3, 9, 20, 21, 22, 23, 24, 25, 26, 70, 71, 78, 79, 90, 130, 131, 132, 133, 134, 135, 136, 137, 138, 139, 140, 141, 147, 148, 149, 150, 158, 159, 170, 171, 172, 173, 185, 200, 270, 271, 274, 275, 290, 291, 292 and photographs A, B, D, E, F, G, H, J, K and O.

The vehicle described in this form has been subject to the following amendments :

on.....	19.....	rec. no.....	List.....	on.....	19.....	rec. no.....	List.....
on.....	19.....	rec. no.....	List.....	on.....	19.....	rec. no.....	List.....
on.....	19.....	rec. no.....	List.....	on.....	19.....	rec. no.....	List.....
on.....	19.....	rec. no.....	List.....	on.....	19.....	rec. no.....	List.....
on.....	19.....	rec. no.....	List.....	on.....	19.....	rec. no.....	List.....

Optional equipment affecting preceding information. This to be stated together with reference number.

**Manufacturing tolerances.**

1. For all machined surfaces allow .075%
2. For all non machined surfaces allow 2%
3. For weights of all part machined parts allow 2.5%
4. For weights of all completely machined parts allow 1.25%





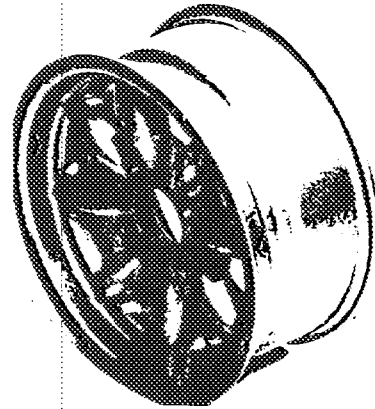
**MOTOR SPORT DIVISION**  
 The Royal Automobile Club,  
 31 Belgrave Square, London, S.W.1

Manufacturer..... FORD  
 Model..... LOTUS CORTINA  
 F.I.A. Recognition No.....  
 Amendment No..... I

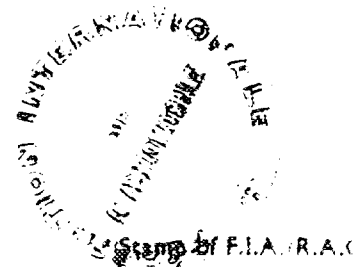
*Amendment to Form of Recognition*

**FEDERATION INTERNATIONALE DE L'AUTOMOBILE**

No.	Reference No.	LOTUS CORTINA ALTERNATIVES	GROUP II	PART NUMBER
1	293	Final Drive Ratios 4.7:1 33/7	4.4:1 40/9	
2	53	6J Electron Wheels  13" Dia x 6" Width 10 lbs Weight.		CD 1000/3
3	292	FORD Limited Slip Differential Unit		CD 2927E/4204A
4	7	Fuel Tank 12 gallons	54.6 litres	14.4 U.S.Gallons CD12 G.S.R.



Date amendment is valid from.....





MOTOR SPORT DIVISION  
The Royal Automobile Club,  
31 Belgrave Square, London, S.W.1

Manufacturer..... FORD .....

Model..... LOTUS CORTINA .....

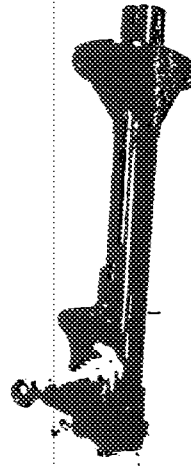
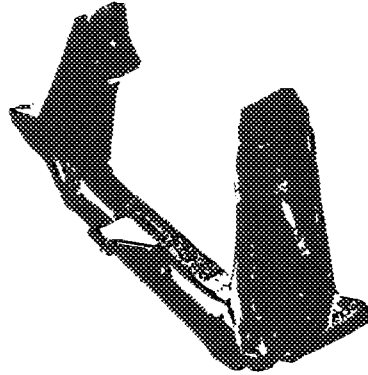
F.I.A. Recognition No. ....

Amendment No. .... 2 .....

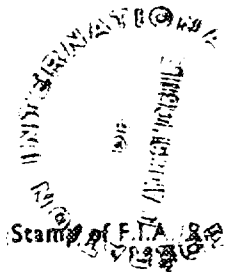
Amendment to Form of Recognition

FEDERATION INTERNATIONALE DE L'AUTOMOBILE

No.	Reference No.	<u>LOTUS CORTINA ALTERNATIVES</u>	<u>GROUP II</u>	<u>PART NUMBER</u>
5	70	Heavy Duty Crossmember and Suspension		CD 3016E/5019A CD 3014E/3K03E CD 3014E/3K03E



Date amendment is valid from.....





FEDERATION INTERNATIONALE DE L'AUTOMOBILE

FORD - CORTINA LOTUS

MARQUE ET MODELE

4/67 -

VALIDITE HOMOLOGATION

1467

FICHE NR.

*(Empty box for additional details)*

2 / 1600

GROUPE / CLASSE

EXTENSIONS	DEBUT VALIDITE	DESCRIPTION	NOTES
1	-	COUPLE F. M. A. C. - SANTE	
		DIFFERENTIEL A D T O B L O Q U A N T	
2	-	RESERVOIR -	
		SUSPENSION	

Autres homologations du modèle 208-1224-5078-5176

Vérifiée le 23/10/95 par [Signature] visée ce jour le \_\_\_\_\_ par \_\_\_\_\_