



F.I.A. Recognition No.

1614

Group

II TOURING

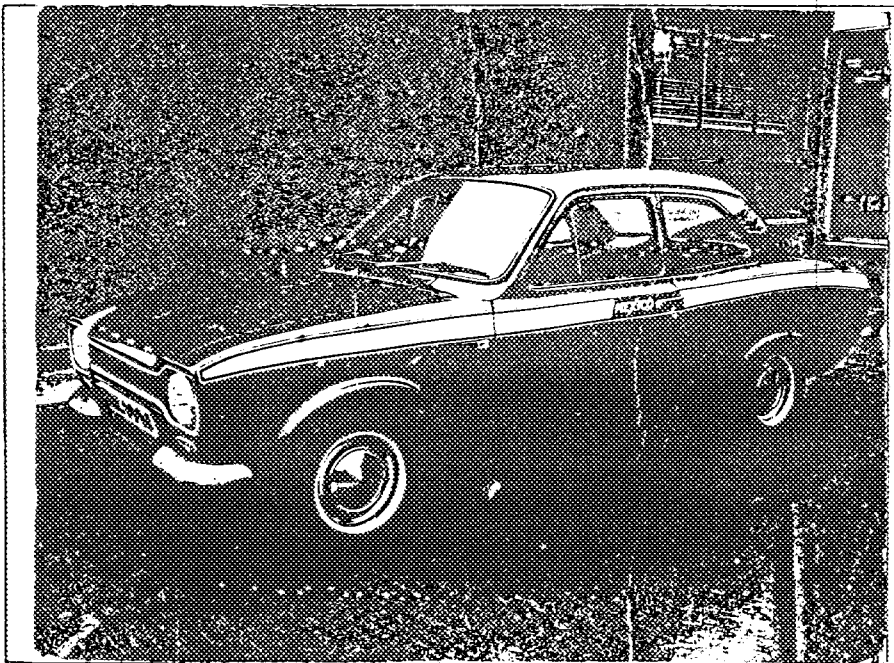
ROYAL AUTOMOBILE CLUB

31 Belgrave Square, London, SW1X 8QH

Form of recognition in accordance with appendix J to the International Sporting Code of the
FEDERATION INTERNATIONALE DE L'AUTOMOBILE

Manufacturer FORD MOTOR COMPANY LIMITED Model ESCORT MEXICO
Serial No. of chassis/body BFATKR 23264 Manufacturer FORD
Serial No. of engine - Manufacturer FORD
Recognition is valid from 1st May 1974 List -
The manufacturing of the model described in this recognition form started on April 1974
and the minimum production of 1000 identical cars, in accordance with the specifications of
this form was reached on 1st May 1974

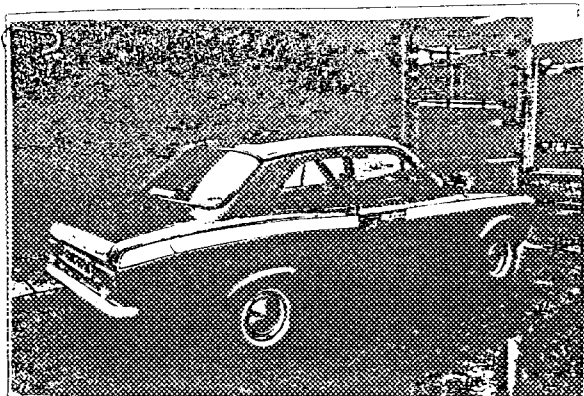
Photograph A. 1/2 view of car from front



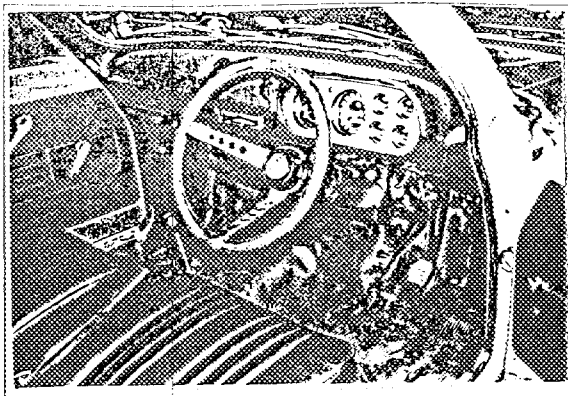
F.I.A. Stamp

R.A.C. Stamp

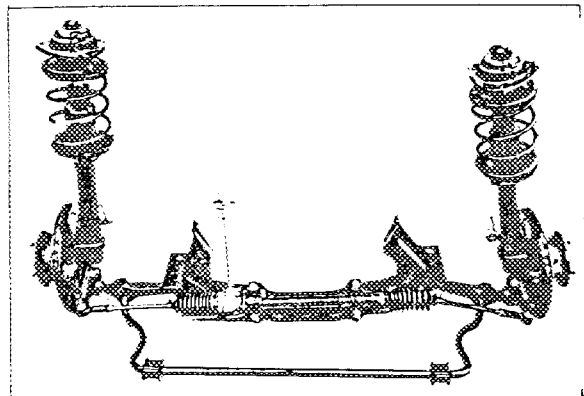
B



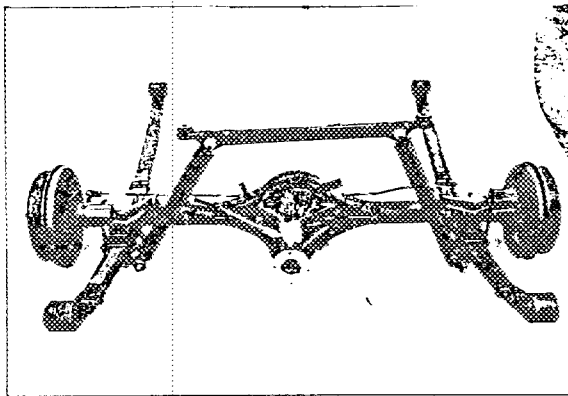
C



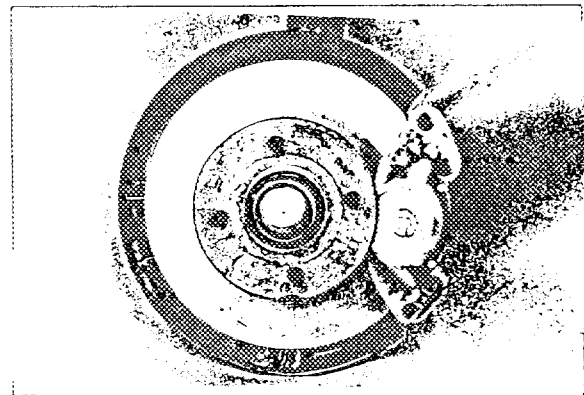
D



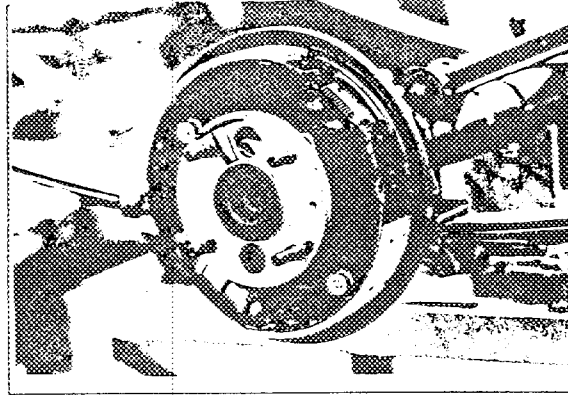
E



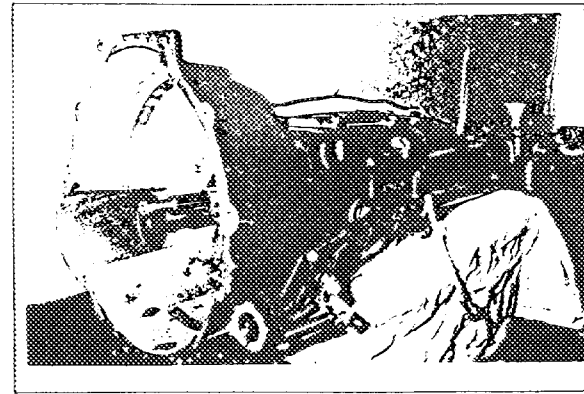
F



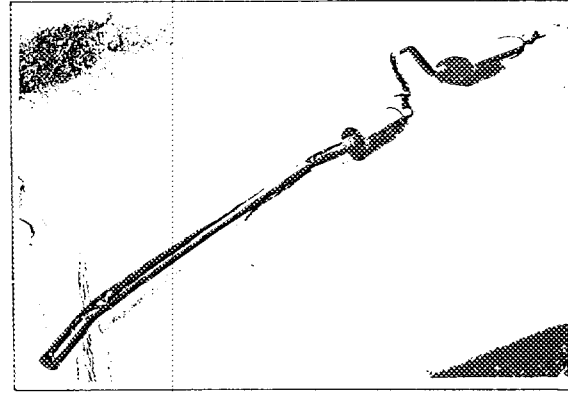
G



H

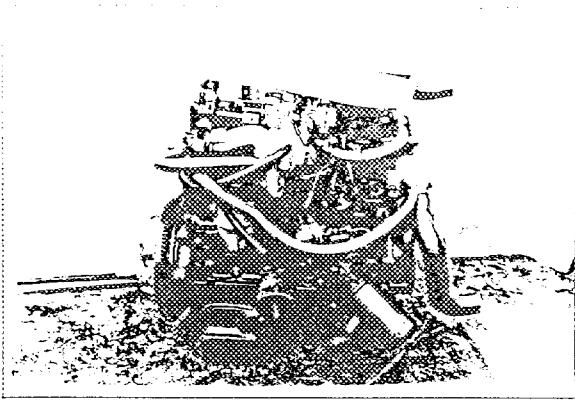


I

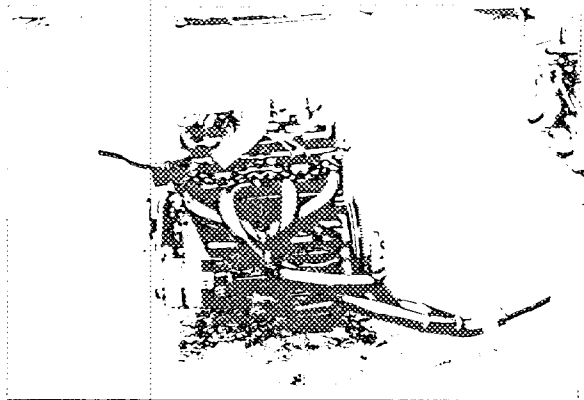


1514

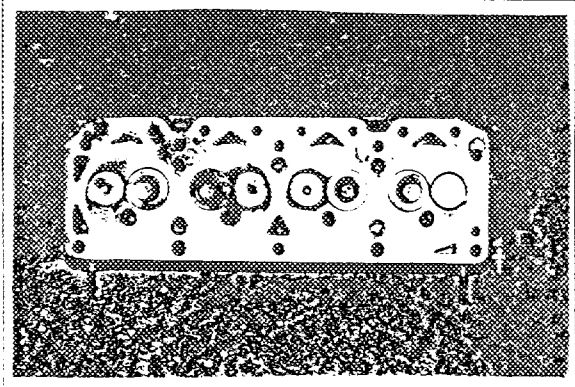
J



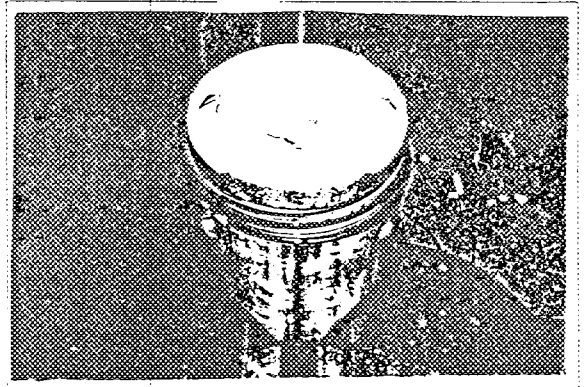
K



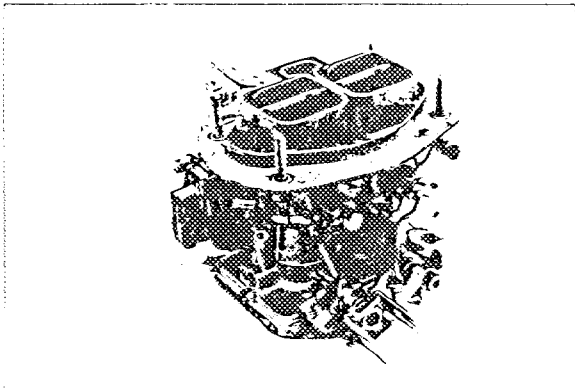
L



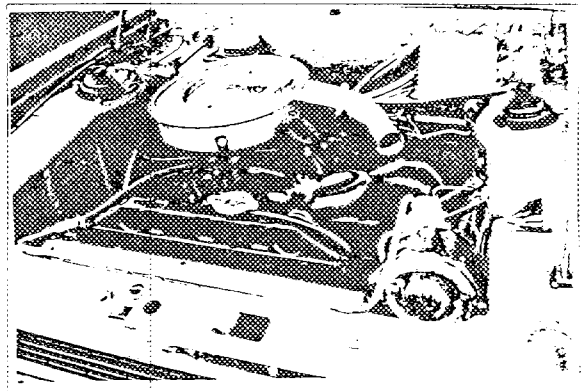
M



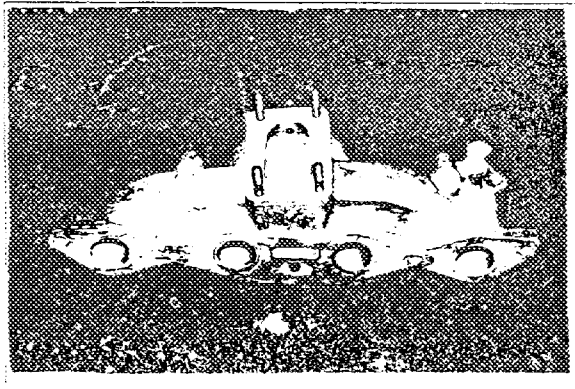
N



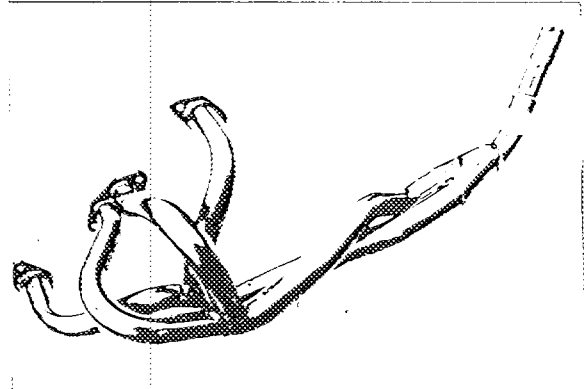
O



P



Q

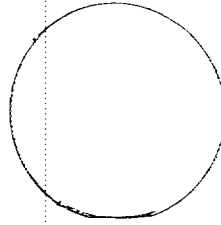


Make Ford

Model Escort Mexico

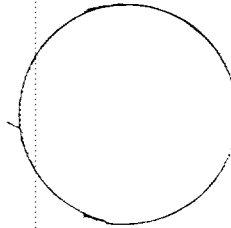
F.I.A. Rec. No. 1614

Drawing inlet manifold ports, side of cylinderhead. Indicate scale or dimensions and manufacturing tolerance.



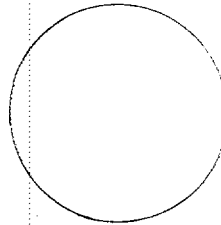
Dia 1.24 ins
31.5 mm

Drawing of entrance to inlet port of cylinderhead. Indicate scale or dimensions and manufacturing tolerance.



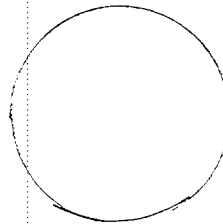
Dia 1.42 ins
36.06 mm

Drawing of exhaust manifold ports, side of cylinderhead. Indicate scale or dimensions and manufacturing tolerance.



Dia 1.15 ins
29.25 mm

Drawing of exit to exhaust port of cylinderhead. Indicate scale or dimensions and manufacturing tolerance.



Dia 1.15 ins
29.25 mm

Make Pord

Model Escort Mexico

F.I.A. Rec. No. 1614

NOTE 1.

All dimensions must be given in two measuring systems, see Note 3.

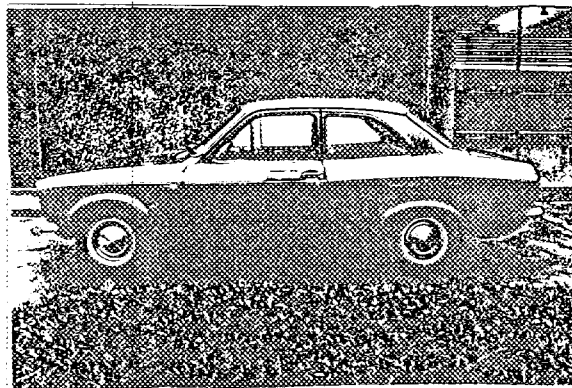
CAPACITIES AND DIMENSIONS

- | | | | | |
|----------------|--------|-----|-------|--------|
| 1. Wheelbase | 2430 | mm. | 96.0 | inches |
| 2. Front track | 1314.5 | mm. | 51.75 | inches |
| 3. Rear track | 1338.5 | mm. | 52.5 | inches |

Measured from rocker panel to road

Front	Rear
9.25 ins	9.25 ins
234.9 mm	234.9 mm

See Note 2



- | | | | | |
|--|--------|-------|-------|------------|
| 4. Overall length of the car | 397.8 | cm. | 156.6 | inches |
| 5. Overall width of the car | 160.8 | cm. | 63 | inches |
| 6. Overall height of the car | 1320.4 | cm. | 52.0 | inches |
| 7. Capacity of fuel tank (reserve included) | 40.2 | ltrs. | 10.8 | gall. U.S. |
| | | | 9 | gall. Imp. |
| 8. Seating Capacity. | 4 | | | |
| 9. Weight. Total weight of the car with normal equipment, water, oil, and spare wheel but without fuel or repair tools : | 890 | kg. | 1958 | lbs. |
| | | | 17.5 | cwts. |

NOTE 2.

Differences in track caused by the use of other wheels with different rim widths must be stated when recognition is requested for the wheels concerned. Specify ground clearance in relation to the track and give drawing of two easily recognisable points at front and rear at which measurements are taken. These ground clearance dimensions are only for information when checking the track and can in no way affect the eligibility of the car.

NOTE 3.

CONVERSION TABLE

1 inch/pouce	— 2.54	cm.	1 quart US	— 0.9464	ltrs.
1 foot/pied	— 30.4794	cm.	1 pint (pt)	— 0.568	ltrs.
1 sq. inch/pouce carre	— 6.452	cm. ²	1 gallon Imp.	— 4.546	ltrs.
1 cubic inch/pouce cube	— 16.387	cm. ³	1 gallon US	— 3.785	ltrs.
1 pound/livre (lb)	— 453.593	gr.	1 hundred weight (cwt.)	— 50.802	kg.

CHASSIS AND COACHWORK (Photographs A, B and C)

- 20. Chassis/body construction: ~~separate~~/unitary construction
- 21. Unitary construction, material(s) **steel**
- 22. Separate construction, Material(s) of chassis **-**
- 23. Material(s) of coachwork **steel**
- 24. Number of doors **2** Material(s) **steel**
- 25. Material(s) of bonnet **steel**
- 26. Material(s) of boot lid **steel**
- 27. Material(s) of rear-window **toughened glass**
- 28. Material(s) of windscreen **laminated glass**
- 29. Material(s) of front-door windows **toughened glass**
- 30. Material(s) of rear-door windows **N/A**
- 31. Sliding system of door windows **rotating handle**
- 32. Material(s) of rear-quarter light **toughened glass**

ACCESSORIES AND UPHOLSTERY

- 38. Interior heating : ~~yes~~—no optional
- 39. Air conditioning : ~~yes~~—no
- 40. Ventilation : yes—~~no~~
- 41. Front seats, type of seat and upholstery **Bucket P V C**
- 42. Weight of front seat(s), complete with supports and rails, out of the car :

6.45	kg.	14	lbs.
------	-----	----	------
- 43. Rear seats, type of seat and upholstery **Bench P V C**
- 44. Front bumper, material(s) **steel** Weight **0.59** each kg. **1.3** each lbs.
- 45. Rear bumper, material(s) **Steel** Weight **2.5** kg. **5.5** lbs.

WHEELS

- 50. Type **Pressed steel disc**
- 51. Weight (per wheel, without tyre) **5.94** kg. **13** lbs. 2 oz
- 52. Method of attachment **4 taper nut fixing**
- 53. Rim diameter **330** mm. **13.0** ins. 54. Rim width **139.7** mm. **5.5** ins.

STEERING

- 60. Type **Rack and pinion**
- 61. Servo-assistance : ~~yes~~—no
- 62. Number of turns of steering wheel from lock to lock **2.7**
- 63. In case of servo-assistance **N/A**

Make Ford

Model Escort Mexico

F.I.A. Rec. No.

1614

SUSPENSION

- 70. Front suspension (photograph D), type Independent McPherson Strut
- 71. Type of spring Coil
- 72. Stabiliser (if fitted) Integral with lower arms
- 73. Number of shock absorbers 2
- 74. Type Integral suspension leg telescopic double acting
- 78. Rear suspension (photograph E), type Live axle
- 79. Type of spring Multi leaf semi-elliptic
- 80. Stabiliser (if fitted) Trailing links
- 81. Number of shock absorbers 2
- 82. Type Telescopic double acting

BRAKES (photographs F and G)

- 90. Method of operation Hydraulic
- 91. Servo-assistance (if fitted), type Hydraulic vacuum
- 92. Number of hydraulic master cylinders Single

93. Number of cylinders per wheel	2 FRONT	1 REAR
94. Bore of wheel cylinder(s)	54.0 mm. 2.126 inches	19.05 mm. 0.75 inches

Drum Brakes

95. Inside diameter	mm. inches	228.6 mm. 9.0 inches
96. Length of brake linings	mm. inches	218.9 mm. 8.62 inches
97. Width of brake linings	mm. inches	44.45 mm. 1.75 inches
98. Number of shoes per brake		2
99. Total area per brake	mm. ² sq. in.	1946.4 mm. ² 30.17 sq. in.

Disc Brakes

100. Outside diameter	244.0 mm. 9.6 inches	mm. inches
101. Thickness of disc	12.7 mm. .5 inches	mm. inches
102. Length of brake linings	76.2 mm. 3.0 inches	mm. inches
103. Width of brake linings	53.34 mm. 2.1 inches	mm. inches
104. Number of pads per brake	2	
105. Total area per brake	6670 mm. ² 10.34 sq. in.	mm. ² sq. in.

Make **Ford**

Model **Escort Mexico**

F.I.A. Rec. No.

1614

ENGINE (photographs J and K)

130. Cycle **Four stroke.** 131. Number of cylinders **4**

132. Cylinder Arrangement **In line**

133. Bore **81.07** mm. **3.191** in. 134. Stroke **77.02** mm. **3.060** in.

135. Capacity per cylinder **400.2** cm.³ **24.38** cu.in.

136. Total cylinder capacity **1601** cm.³ **97.55** cu.in.

137. Material(s) of cylinder block **Cast Iron** 138. Material(s) of sleeves (if fitted) **steel**

139. Cylinder head, material(s) **Cast Iron** Number fitted **1**

140. Number of inlet ports **4** 141. Number of exhaust ports **4**

142. Compression ratio **9:1 ± .4** **± 2 cc ± .25 cu in**

143. Volume of one combustion chamber **43.6** cm.³ **2.65** cu.in.

144. Piston, material **Aluminium Alloy** 145. Number of rings **3**

146. Distance from gudgeon pin centre line to highest point of piston crown **44.2** mm. **1.737** in. **± .002** in.

147. Crankshaft: moulded/~~stamped~~ 148. Type of crankshaft: integral/**cast with balance** **in**

149. Number of crankshaft main bearings **5**

150. Material of bearing cap **Cast Iron**

151. System of lubrication: ~~dry sump~~/oil in sump

152. Capacity, lubricant **4.6** ltrs. **8** pts. **4.7** quarts U.S.

153. Oil cooler: yes/~~no~~ 154. Method of engine cooling **water and fan**

155. Capacity of cooling system **6.1** ltrs. **11.4** pts. **6.9** quarts U.S.

156. Cooling fan (if fitted) dia. **30.48** cm. **12.0** in.

157. Number of blades of cooling fan **7**

Bearings

158. Crankshaft main, type **steel backed lead/bronze** dia. **53.9** m.m. **2.125** in.

159. Connecting rod big end, type **steel backed lead/bronze** dia. **49.2** m.m. **1.937** in.

Weights

160. Flywheel (clean) **10.09** kg. **22.25** lbs.

161. Flywheel with clutch (all turning parts) **13.5** kg. **30** lbs.

162. Crankshaft **10.8** kg. **24** lbs. 163. Connecting rod **1.66** kg. **1.41** lbs.

164. Piston with rings and pin **0.05** kg. **1.2** lbs.

Make Ford

Model Escort Mexico

F.I.A. Rec. No. 1614

FOUR STROKE ENGINES

170. Number of camshafts 1 171. Location In block
 172. Type of camshaft drive Chain
 173. Type of valve operation Push rod and tappet

INLET (see page 4)*

180. Material(s) of inlet manifold Aluminium Alloy
 181. Diameter of valves 39.62 mm. 1.56 ins.
 182. Max. valve lift 9.04 mm. 0.356 in. 183. Number of valve springs 1
 184. Type of spring Helical coil 185. Number of valves per cylinder 1
 186. Tappet clearance for checking timing (cold) 0.31 mm. 0.012 ins.
 187. Valves open at (with tolerance for tappet clearance indicated) 27 BTDC
 188. Valves close at (with tolerance for tappet clearance indicated) 65° ABDC
 189. Air filter, type Paper Element

EXHAUST (see page 4)*

195. Material(s) of exhaust manifold Steel tube
 196. Diameter of valves 34.03 mm. 1.34 ins.
 197. Max. valve lift 9.09 mm. 0.358 in. 198. Number of valve springs 1
 199. Type of spring Helical coil 200. Number of valves per cylinder 1
 201. Tappet clearance for checking timing (cold) 0.56 mm. 0.022 ins.
 202. Valves open at (with tolerance for tappet clearance indicated) 65° B B D C
 203. Valves close at (with tolerance for tappet clearance indicated) 27° A T D C

CARBURETION (photograph N)

210. Number of carburettors fitted 1 211. Type Downdraught
 212. Make Weber 213. Model 32/30 - DCV - PA
 214. Number of mixture passages per carburettor 2
 215. Flange hole diameter of exit port(s) of carburettor 31.75/35.7 mm. 1.25/1.43 ins.
 216. Minimum diameter of venturi/minimum diam., with piston at maximum height (example: SU) 32/30 mm. 1.20/1.41 ins.

INJECTION (if fitted)

220. Make of pump 221. Number of plungers
 222. Model or type of pump 223. Total number of injectors
 224. Location of injectors
 225. Minimum diameter of inlet pipe mm. ins.

* For additional information concerning two-stroke engines and super-charged engines, see page 13.

Make Ford

Model Escort Mexico

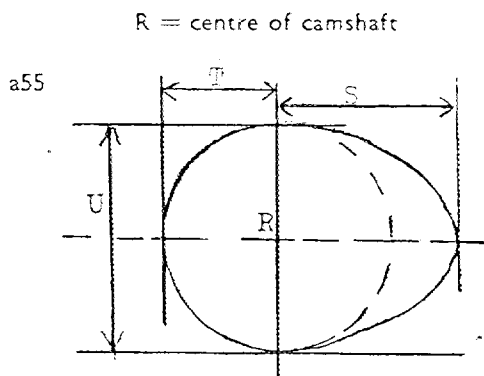
F.I.A. Rec. No. 1614

ENGINE ACCESSORIES

- 230. Fuel pump: mechanical ~~mechanical~~
- 231. No. fitted 1
- 232. Type of ignition system coil & battery
- 233. No. of distributors 1
- 234. No. of ignition coils 1
- 235. No. of spark plugs per cylinder 1
- 236. Generator, type: ~~generator~~/alternator—number fitted 1
- 237. Method of drive Belt
- 238. Voltage of generator 12 volts
- 239. Battery, number 1
- 240. Location Boot compartment
- 241. Voltage of battery 12 volts

ENGINE AND CAR PERFORMANCES (as declared by manufacturer in catalogue)

- 250. Max. engine output 86 din (type of horsepower: BHP) at 5500 r.p.m.
- 251. Max. r.p.m. 6500 output at that figure 80 din
- 252. Max. torque 92 lbs ft at 4000 r.p.m.
- 253. Max. speed of the car not declared by manufacturer in catalogue km./hour miles/hour



Inlet cam

S =	19.58	mm.	0.771	inches
T =	13.71	mm.	0.540	inches
U =	27.43	mm.	1.08	inches
			± 0.05 mm	0.002 ins

Exhaust cam

S =	19.01	mm.	0.772	inches
T =	13.71	mm.	0.54	inches
U =	27.43	mm.	1.08	inches

Make Ford

Model Escort Mexico

F.I.A. Rec. No. 1614

DRIVE TRAIN

CLUTCH

- 260. Type of clutch Diaphragm
- 261. No. of plates 1
- 262. Dia. of clutch plates 19.05 cm. 7.5 ins.
- 263. Dia. of linings, inside 13.65 cm. 5.375 ins.
- outside 19.05 cm. ins.
- 264. Method of operating clutch Hydraulic

GEAR BOX (photograph H)

- 270. Manual type, make Ford Method of operation Manual
- 271. No. of gear-box ratios forward 4 272. Synchronized forward ratios 4
- 273. Location of gear-shift Remote central floor control
- 274. Automatic, make N/A type N/A
- 275. No. of forward ratios N/A 276. Location of gear shift N/A

277.	Ratio	Manual		Automatic		Alternative manual/automatic			
		No. teeth	No. teeth	Ratio	No. teeth	Ratio	No. teeth	Ratio	No. teeth
1	2.97	$\frac{30}{19} \times \frac{32}{17}$							
2	2.01	$\frac{30}{19} \times \frac{28}{22}$							
3	1.39	$\frac{30}{19} \times \frac{23}{22}$							
4	1.0	Direct							
5									
6									
reverse									

- 278. Overdrive, type N/A
- 279. Forward gears on which overdrive can be selected N/A
- 280. Overdrive ratio N/A

FINAL DRIVE

- 290. Type of final drive Semi floating hypoid 291. Type of differential Two pinion
- 292. Type of limited slip differential (if fitted) Salisbury four pinion
- 293. Final drive ratio 3.7 : 1 Number of teeth 34/2

IMPORTANT—The conformity of the car with the following items of the present recognition form is to be disregarded during the scrutineering, when the vehicle has been entered in group 2 (Touring cars) or 3 (Grand Touring cars) : 41, 72, 80, 91, 142, 143, 144, 145, 146, 153, 156, 157, 160, 161, 162, 163, 164, 182, 186, 187, 188, 189, 201, 202, 203, 212, 213, 215, 216, 222, 225, 230, 250, 251, 252, 253, 255 photographs I, M and N and page 4.

During the scrutineering of cars entered in group 4 (Sportscars) only the following items of the present recognition form are to be taken into consideration : 1, 2, 3, 9, 20, 21, 22, 23, 24, 25, 26, 70, 71, 78, 79, 90, 130, 131, 132, 133, 134, 135, 136, 137, 138, 139, 140, 141, 147, 148, 149, 150, 158, 159, 170, 171, 172, 173, 185, 200, 270, 271, 274, 275, 290, 291, 292 and photographs A, B, D, E, F, G, H, J, K and O.

The vehicle described in this form has been subject to the following amendments :

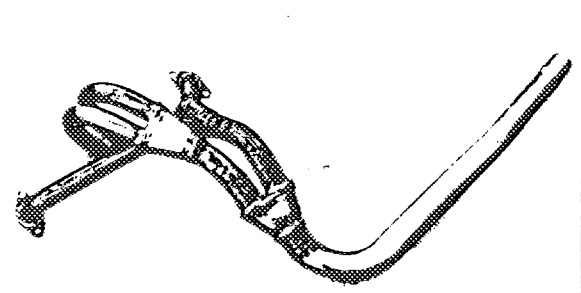
on 19	rec. no.	List	on 19	rec. no.	List
on 19	rec. no.	List	on 19	rec. no.	List
on 19	rec. no.	List	on 19	rec. no.	List
on 19	rec. no.	List	on 19	rec. no.	List
on 19	rec. no.	List	on 19	rec. no.	List

Optional equipment affecting preceding information. This to be stated together with reference number.

- (1) For all machined surfaces allow 0.75"
- (2) For all non-machined surfaces allow 2"
- (3) For weights of all part-machined parts allow 2.5"
- (4) For weights of all completely machined parts allow 1.25"

Notes

- (1) Alternative exhaust manifold (different supplier)



Bore 1.61 in

