



F.I.A. Recognition No. 1048

ROYAL AUTOMOBILE CLUB

PALL MALL, LONDON, S.W.1.

Federation Internationale de l'Automobile.

*Form of Recognition in accordance with
Appendix J to the
International Sporting Code.*

Manufacturer Morris Motors Ltd./Austin Motor Co. Ltd.

Model Mini-Minor/Austin Mini. Year of Manufacture 1959

Serial No. of Chassis M-A2S4

Engine 8MB/U/H

Type of Coachwork _____

Recognition is valid from 17/9/59 to 31/12/59 in category Touring

Ref. No. AD0154/59



phot.

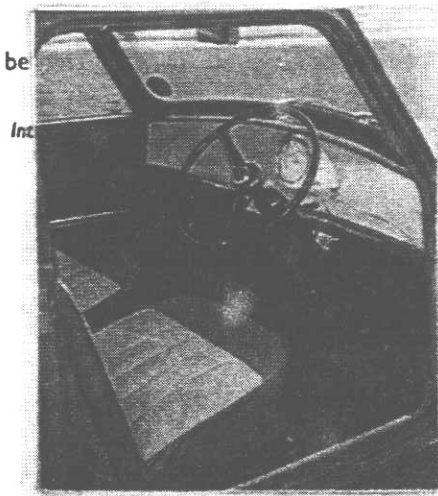


Stamp of F.I.A. to be
affixed here

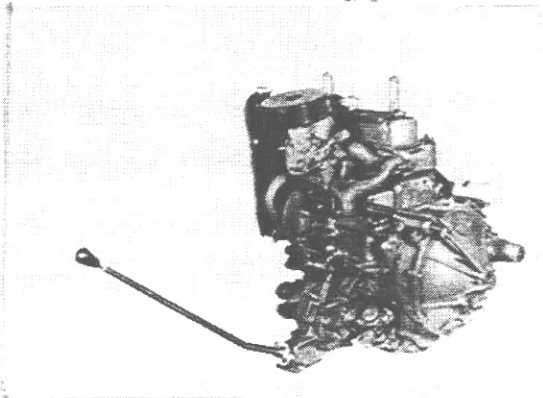
FEDERATION
INTERNATIONALE
AUTOMOBILE

General description of car:

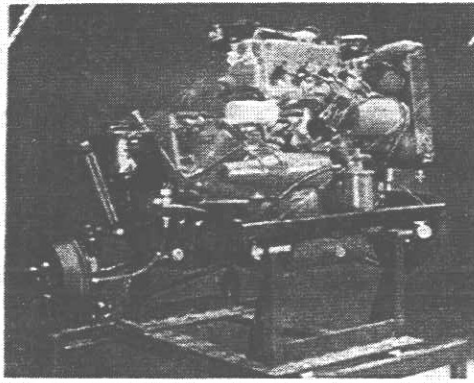
Photographs to be affixed be



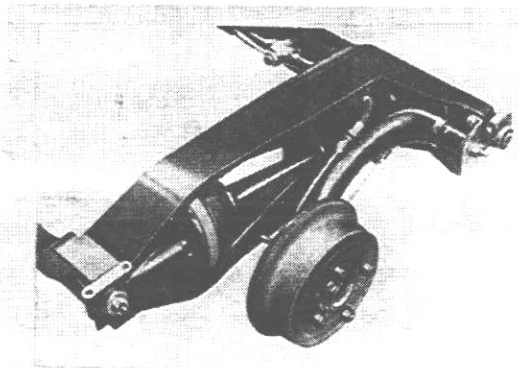
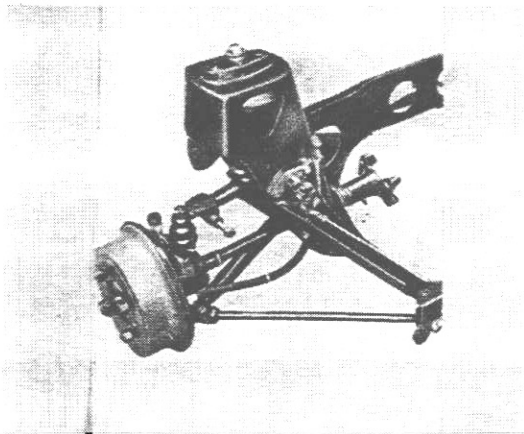
Engine unit with accessories from right.



Front axle complete (without wheels).



Rear axle complete (without wheels).



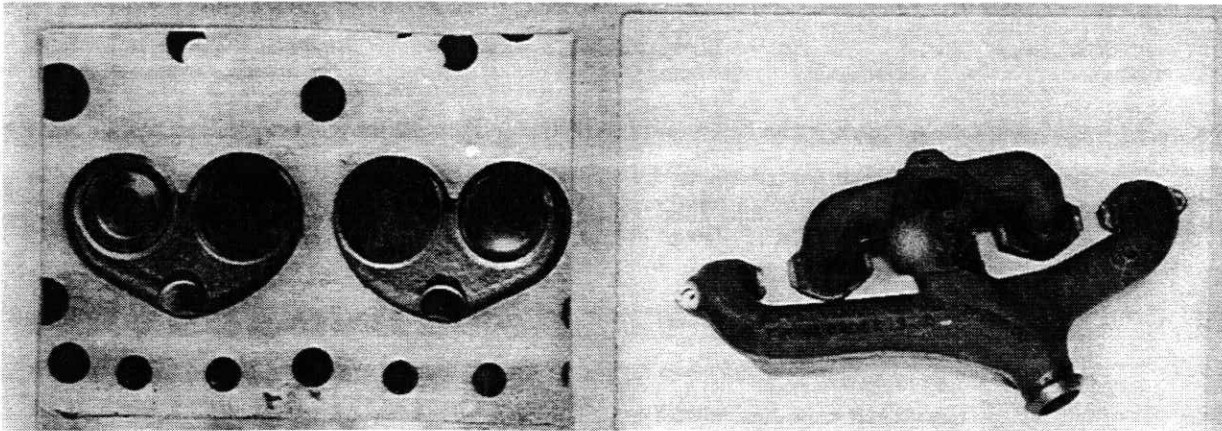
ENGINE

in line in line
 No. of cylinders 4 in V -
 opposed -
 Cycle four Firing order 1.3.4.2.
 Capacity 848 c.c. Bore 62.94 m.m. Stroke 68.26 m.m.
 Maximum rebore .040" o/size Resultant capacity 878 c.c.
 Material of cylinder block Cast Iron Material of sleeves, if fitted -
 Distance from crankshaft centre line to top face of block at centre line of cylinders 0.6" 218.4 m.m.
 Material of cylinder head Cast Iron Volume of one combustion chamber 24.5 c.c.
 Compression ratio 8.3:1
 Material of piston Aluminium No. of piston rings 4
 Distance from gudgeon pin centre line to highest point of piston crown 1.495" 38 m.m.
 Bearings { Crankshaft main bearings: Type Renewable shells Dia. 44.5 m.m.
 Connecting rod big end: Type " Dia. 41.33 m.m.
 Weights { Flywheel 7.03 kg.
 Crankshaft 8.5 kg.
 Connecting rod .82 kg.
 Piston with rings .274 kg.
 Gudgeon pin .122 kg.
 No. of valves per cylinder 2 Method of valve operation Push rod and rocker
 No. of camshafts one Location of camshafts Cylinder block
 Type of camshaft drive Chain (single roller)
 Diameter of valves: Inlet 1.093" 27.78 m.m. Exhaust 1.0" 25.4 m.m.
 Diameter of port at valve seat: Inlet 31/32" 24.6 m.m. Exhaust 29/32" 23.06 m.m.
 Tappet clearance for checking timing: Inlet .019" .483 m.m. Exhaust .019" .483 m.m.
 Valves open: Inlet 5° B.T.D.C. Exhaust 40° B.B.D.C.
 Valves close: Inlet 45° A.B.D.C. Exhaust 10° A.T.D.C.
 Maximum valve lift: Inlet .285" 7.24 m.m. Exhaust .285" 7.24 m.m.
 Degrees of crankshaft rotation from zero to—
 Maximum lift: Inlet 115° Exhaust 115°
 ½ Maximum lift: Inlet 67½° Exhaust 67½°
 Valve springs: Inlet Exhaust
 Type Single Single
 No. per valve One One
 Carburettor: Type Semi-downdraft No. fitted One
 (up or down draft, horizontal)
 Make S.U. Model H.S.2
 Flange diameter 65 m.m. Choke diameter 1½" 31.75 m.m.
 Main jet identification No. -
 Needle Standard E.B.
Rich M
Weak G.C.

Air filter: Type Paper Element No. fitted One

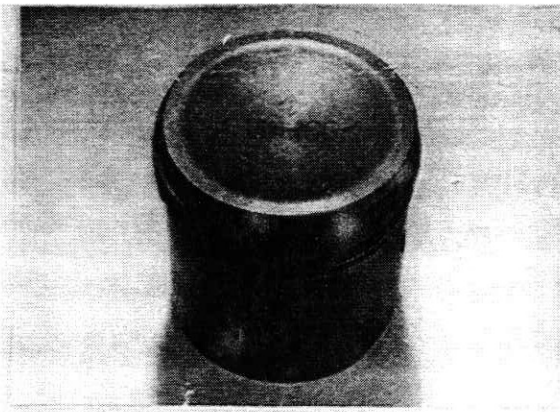
Inlet manifold:

Diameter of flange at carburettor 1 1/4" 31.75 m.m.
 Diameter of flange at port 1 1/16" 26.98 m.m.



Exhaust manifold:

~~Diameter of flange at port~~ Section at port 7/8" x 1 1/16" 22.23 x 26.98 m.m.
 Diameter of flange at connection to silencer inlet pipe 1 1/8" 28.57 m.m.



Photograph of exhaust manifold to be affixed here.

ENGINE ACCESSORIES

Make of fuel pump S.U. No. fitted One
 Method of operation Electrical
 Type of ignition system Coil coil or magneto
 Make of ignition Lucas Model DM2P4
 Method of advance and retard Vacuum and Centrifugal
 Make of ignition coil Lucas Model LA12
 No. of ignition coils One Voltage 12
 Make of dynamo Lucas Model C40
 Voltage of dynamo 12 Maximum output 22 amps.
 Make of starter motor Lucas Model M35H
 Battery: No. fitted One Voltage 12 Capacity 34 or 43 amp. hour @ 20 hour rate

Make Morris Model Mini-Minor F.I.A. Recognition No. _____

TRANSMISSION

Make of clutch B.M.C. Type Direct acting (friction)
 Diameter of clutch plate 181 mm No. of plates one
 Method of operating clutch Hydraulic
 Make of gearbox British Motor Corporation Type 4 speed unit with engine
 No. of gearbox ratios 4 forward and 1 reverse
 Method of operating gearshift Mechanical by gear lever
 Location of gearshift Central at floor level
 Is overdrive fitted? No
 Method of controlling overdrive, if fitted -

	GEARBOX RATIOS		ALTERNATIVE RATIOS					
	Ratio	No. of Teeth	Ratio	No. of Teeth	Ratio	No. of Teeth	Ratio	No. of Teeth
1.	3.627	$\frac{28}{19} \times \frac{32}{13}$						
2.	2.1717	$\frac{28}{19} \times \frac{28}{19}$						
3.	1.412	$\frac{28}{19} \times \frac{23}{24}$						
4.	1.000							
Reverse	3.627	$\frac{28}{19} \times \frac{32}{13}$						

Type of final drive Single Helical - Spur gear
 Type of differential Bevel type
 Final drive ratio 3.765:1 Alternatives None
 No. of teeth 64/17
 Overdrive ratio, if fitted -

WHEELS

Type Diaa - low flange safety rim Weight 5 lb 11 oz 2.582 kg.
 Method of attachment Nut and stud
 Rim diameter 10 ins 254 m.m. Rim width 3.5 ins 88.9 m.m.
 Tyre size: Front 5.20 x 10 Rear 5.20 x 10

BRAXES

Method of operation Main - Hydraulic Handbrake Mechanical
 Is servo assistance fitted? No
 Type of servo, if fitted Not fitted
 No. of hydraulic master cylinders One Bore $\frac{7}{8}$ " 19.05 m.m.

	Front		Rear
No. of wheel cylinders	<u>one</u>		<u>one</u>
Bore of wheel cylinders	<u>15/16"</u> 23.81 m.m.		<u>3/4"</u> 19.05 m.m.
Inside diameter of brake drums	<u>7"</u> 177.8 m.m.		<u>7"</u> 177.8 m.m.
No. of shoes per brake	<u>two</u>		<u>two</u>
Outside diameter of brake discs	<u>-</u> m.m.		<u>-</u> m.m.
No. of pads per brake	<u>-</u>		<u>-</u>
Dimensions of brake linings per shoe or pad (if all shoes or pads in each brake are not of same dimensions, specify each)			

	Front		Rear
Length	<u>6.1"</u> 154.8 m.m.		<u>6.1"</u> 154.7 m.m.
	<u>7.7"</u> m.m.		<u>7.7"</u> m.m.
Width	<u>1.2"</u> 31.7 m.m.		<u>1.2"</u> 31.7 m.m.
Total area per brake	<u>10,062</u> m.m. ²		<u>10,062</u> m.m. ²

SUSPENSION

	Front		Rear
Type	<u>Independent</u>		<u>Independent</u>
Type of spring	<u>Rubber cone unit</u>		<u>Rubber cone unit</u>
Is stabiliser fitted?	<u>No</u>		<u>No</u>
Type of shock absorber	<u>Telescopic</u>		<u>Telescopic</u>
No. of shock absorbers	<u>1 per suspension unit</u>		<u>1 per suspension unit</u>

STEERING

Type of steering gear Rack and pinion

Turning circle of car 32 ft 9 in 9.982 m., approx.

No. of turns of steering wheel from lock to lock 2 1/2

CAPACITIES AND DIMENSIONS

Fuel tank 6 gallons 22.5 litres. Sump 9 pints 5 litres

Cooling system radiator 3.0 litres

Overall length of car 120.25" 305.4 cm. Overall width of car 55 1/4" 140 cm.

Overall height of car, unladen (with hood up, if appropriate) 53" 1341.0 cm.

Distance from floor to top of windscreen:

Highest point 41" 104.1 cm. Lowest point 29 1/8" 75 cm.

Width of windscreen:

Maximum width 45" 114 cm. Minimum width 43" 109 cm.

Interior width 47 1/2" 1156 cm. (between front doors)

No. of seats 4

Track: Front 3' 11 7/16" 120.5 cm. Rear 3' 9 7/8" 116.5 cm.

Wheelbase 80" 203.2 cm. Ground clearance 7 1/8" 181 m.m.

(To be measured at the immediate rear of the steering wheel, and the width quoted to be maintained in a vertical plane of not less than 25 cms.)

Overall weight with water, oil and spare wheel, but without fuel 585.6 kgs.

Additional information for cars fitted with two-cycle engines

System of cylinder scavenging _____

Type of lubrication _____

Size of inlet port:

Length measured around cylinder wall _____ m.m.

Height _____ m.m. Area _____ m.m.²

Size of exhaust port:

Length measured around cylinder wall _____ m.m.

Height _____ m.m. Area _____ m.m.²

Size of transfer port:

Length measured around cylinder wall _____ m.m.

Height _____ m.m. Area _____ m.m.²

Size of piston port:

Length measured around piston _____ m.m.

Height _____ m.m. Area _____ m.m.²

Method of pre-compression _____

Bore and stroke of pre-compression cylinder, if fitted _____ m.m.

Distance from top of cylinder block to lowest point of inlet port _____ m.m.

Distance from top of cylinder block to highest point of exhaust port _____ m.m.

Distance from top of cylinder block to highest point of transfer port _____ m.m.

Drawing of cylinder ports.

Supercharger, if fitted

Make _____ Model or Type No. _____

Type of drive _____ Ratio of drive _____

Fuel injection, if fitted

Make of pump _____ Model or Type No. _____

Make of injectors _____ Model or Type No. _____

Location of injectors _____

Optional equipment affecting preceding information—

The overall weight given on the preceding page is for the de-luxe model.
Weight deduction for De-Luxe without heater is 4.65 kg
Weight deduction for Basic Model is 16.8 kg
Cooling system capacity without heater is 3 litres.

Auxiliary tank 54 gal (25 litres) tank No 21A-13

SECTION
HALF
MILE

Manufacturers Reference No. for Application

ADO 15 M / 59



F.I.A. Recognition No. 1048 1

ROYAL AUTOMOBILE CLUB

PALL MALL, LONDON, S.W.1.

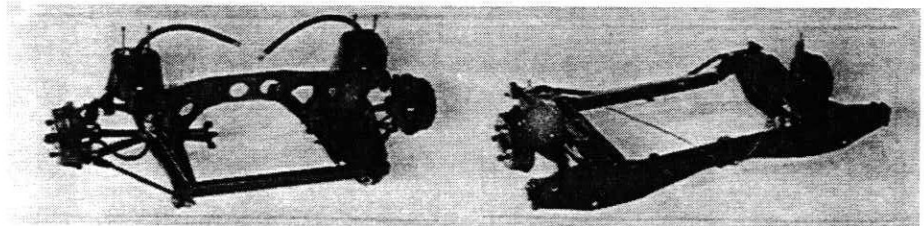
Federation Internationale de l'Automobile.

Amendment to Form of Recognition

Manufacturer Morris Motors Limited

Model Morris Mini Minor

Introduction of Hydrolastic Suspension



Front

Rear

Suspension

Type	Transverse wishbone	Trailing arm
Type of spring	Hydrolastic displacer	Hydrolastic displacer
Is stabilizer fitted	No	No
Type of shockabsorber	Incorporated in displacer	Incorporated in displacer

Clutch - introduction of Diaphragm Clutch

Make of Clutch	-	Borg and Beck
Type	-	Diaphragm Spring (single plate)
Diameter of Clutch Plate	-	181.0 m.m.
No. of plates	-	1

Stamp of F.I.A. to be affixed here.

Date amendment is valid from _____

Form: R.F.I.B.

Manufacturers Reference No. for Application

470 45 M / 59



F.I.A. Recognition No. 1048 / 1 / ET

ROYAL AUTOMOBILE CLUB

PALL MALL, LONDON, S.W.1.

Federation Internationale de l'Automobile.

Amendment to Form of Recognition

Manufacturer Morris Motors Limited

Model Morris Mini Minor

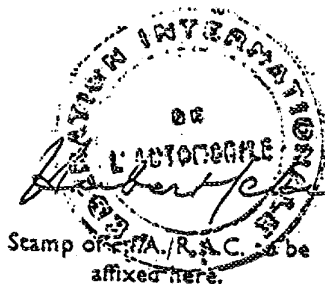
Brakes

Master cylinder - Bore 17.78mm.

	<u>Front</u>	<u>Rear</u>
No of wheel cylinders	4	2
Bore of wheel cylinders	20.32mm	15.88mm
Inside Dia. of brakedrum	177.8mm	177.8mm
No of shoes per brake	2	2

Dimensions of Linings

Length	171.45mm	171.45mm
Width	38.10mm	31.75mm
Total Area Per Brake	13060mm ²	10887mm ²



Date amendment is valid from 16 Nov 1964

Form: R.F.I.B.

MORRIS MOTOR CO. LTD.

Manufacturers Reference No. for Application

15 M/59
ADO 15 A/59



F.I.A. Recognition No.

1048
1047

2/ET

ROYAL AUTOMOBILE CLUB

PALL MALL, LONDON, S.W.1.

Federation Internationale de l'Automobile.

Amendment to Form of Recognition

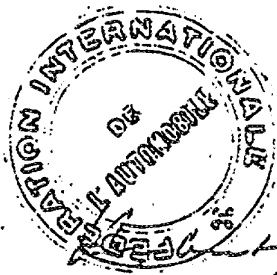
Manufacturer The British Motor Corporation

Model Morris/Austin Mini

Add to optional equipment

High Traction Differential

Part No. C/AJJ 3303



Stamp of F.I.A./R.A.C. to be affixed here.

Date amendment is valid from

1st April 1965
Form: R.F.I.B.

PERMITS
RAC LTD.