

Manufacturers Reference No. for Application

10/63/DAG



F.I.A. Recognition No.

1225

ROYAL AUTOMOBILE CLUB

PALL MALL, LONDON, S.W.1.

Federation Internationale de l'Automobile.

*Form of Recognition in accordance with
Appendix J to the
International Sporting Code.*

Manufacturer..... FORD MOTOR COMPANY LIMITED

Model..... CONSUL CORTINA G.T. Year of Manufacture..... 1963

Serial No. of Chassis..... Z77C047589 (2 door) Z78C049025 (4 door)

Engine..... 122E 209 (2 door) 122E 590 (4 door)

Type of Coachwork..... Saloon

Recognition is valid from..... September 5th. 1963 In category..... Touring

8/22

Photograph to be affixed here $\frac{3}{4}$ view of car from front right.



Stamp of F.I.A./R.A.C. to be affixed here.



Form: R.F.I.A.

General description of car:

Specify here material/s of
chassis/body construction

2 or 4 door, 4 seater saloon
Body and Chassis unit construction of steel

Photographs to be affixed below.

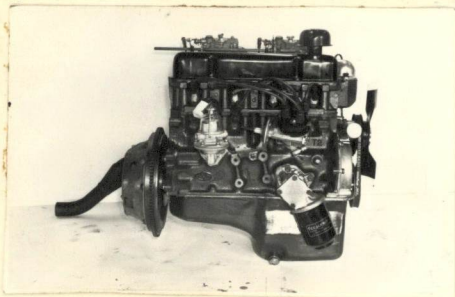
$\frac{3}{4}$ view of car from rear left.



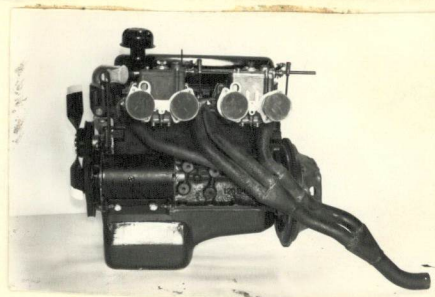
Interior view of car through driver's door.



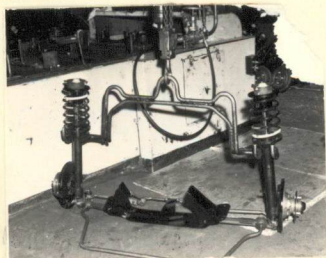
Engine unit with accessories from right.



Engine unit with accessories from left.



Front axle complete (without wheels).



Rear axle complete (without wheels).



RECEIVED
MAY 1954

ENGINE

in line Yes
 No. of cylinders 4 in V -
 opposed -
 Cycle 4 stroke Firing order 1, 2, 4, 3
 Capacity 1498.33 c.c. Bore 80.97 m.m. Stroke 72.75 m.m.
 Maximum rebore 1.143 mm Resultant capacity 1541.0 c.c.
 Material of cylinder block Cast iron Material of sleeves, if fitted -
 Distance from crankshaft centre line to top face of block at centre line of cylinders 197.8 m.m.
 Material of cylinder head Cast iron (thick floor) Volume of one combustion chamber 33.0 c.c.
 Compression ratio 10.4 : 1
 Material of piston Aluminium alloy No. of piston rings 3
 Distance from gudgeon pin centre line to highest point of piston crown 38.82 m.m.
 Bearings { Crankshaft main bearings: Type Copper lead Dia. 53.994 m.m.
 Connecting rod big end: Type Steel backed Dia. 49.206 m.m.
 Flywheel 8.426 or lead bronze
 Weights { Crankshaft 10.9 kg.
 Connecting rod 0.579 kg.
 Piston with rings 0.417 kg.
 Gudgeon pin 0.114 kg.
 No. of valves per cylinder Two Method of valve operation Push rod (Modified rocker)
 No. of camshafts One Location of camshafts in cylinder block Pillars)
 Type of camshaft drive Chain
 Diameter of valves: Inlet 39.60 m.m. Exhaust 34.39 m.m.
 Diameter of port at valve seat: Inlet 36.428 m.m. Exhaust 29.82 m.m.
 Tappet clearance for checking timing: Inlet 0.761 m.m. Exhaust 0.761 m.m.
 Valves open: Inlet 40° B.T.C. Exhaust 60° B.B.C.
 Valves close: Inlet 60° A.B.C. Exhaust 40° A.T.C.
 Maximum valve lift: Inlet 10.54 m.m. Exhaust 10.54 m.m.
 Degrees of crankshaft rotation from zero to—
 Maximum lift: Inlet 195° Exhaust 164°
 ¾ Maximum lift: Inlet 125.5° Exhaust 81°
 Valve springs: Inlet Helical Coil Exhaust Helical Coil
 Type Helical Coil Helical Coil
 No. per valve Two Two
 Carburettor: Type Horizontal No. fitted Two
 (up or down draft, horizontal)
 Make Weber Model 40 DCOE2
 Flange hole diameter 40 m.m. Choke diameter 30 m.m.
 Main jet identification No. 120

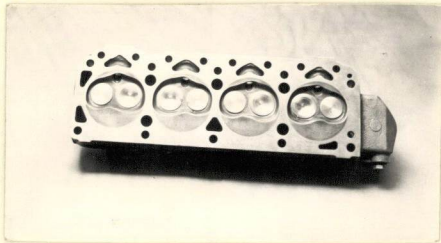
Air filter: Type Paper element No. fitted 4

Inlet manifold:
Diameter of flange hole at carburettor 40 m.m.

Diameter of flange hole at port 31.70 m.m.



Photograph of combustion chamber to be affixed here.



Photograph of inlet manifold to be affixed here.



Exhaust manifold:

Diameter of flange hole at port 30.45 m.m.

Diameter of flange hole at connection to silencer inlet pipe 38.10 m.m.

Photograph of piston showing crown to be affixed here.



Photograph of exhaust manifold to be affixed here.



ENGINE ACCESSORIES

Make of fuel pump A.C. Delco No. fitted One

Method of operation Eccentric on Camshaft

Type of ignition system Coil coil or magneto

Make of ignition Lucas Model Distributor 25 D4

Method of advance and retard Automatic centrifugal and vacuum

Make of ignition coil Lucas or A.C. Delco Model LA 12

No. of ignition coils One Voltage 12 v

Make of dynamo Lucas Model C 40 L

Voltage of dynamo 12 v alternator Maximum output 25 amps.

Make of starter motor Lucas Model M 25 G

Battery: No. fitted One Voltage 12 Capacity 38 amp. hour

Oil Cooler (if fitted) type None Capacity pints

Make **FORD** Model **CONSUL CORTINA GT** F.I.A. Recognition No. **10/63/DAG**
 Manufacturers Reference No. of Application **10/63/DAG**

TRANSMISSION

Make of clutch **Ford /Borg and Beck** Type **Single dry plate**
 Diameter of clutch plate **184.15 mm** No. of plates **One**
 Method of operating clutch **Foot pedal and hydraulic slave cylinder**
 Make of gearbox **Ford** Type **Synchro. on all 4 forward gears**
 No. of gearbox ratios **4 forward and 1 reverse**
 Method of operating gearshift **Remote lever or central floor shift**
 Location of gearshift
 Is overdrive fitted? **No**
 Method of controlling overdrive, if fitted **None**

| | GEARBOX RATIOS | | ALTERNATIVE RATIOS | | | | | |
|----|----------------|--------------------------------------|--------------------|--------------------------------------|-------|--------------------------------------|-------|--------------------------------------|
| | Ratio | No. of Teeth | Ratio | No. of Teeth | Ratio | No. of Teeth | Ratio | No. of Teeth |
| 1. | 3.543 | $\frac{32}{17} \times \frac{32}{17}$ | 3.543 | $\frac{32}{17} \times \frac{32}{17}$ | 2.97 | $\frac{30}{19} \times \frac{32}{17}$ | 2.50 | $\frac{28}{21} \times \frac{32}{17}$ |
| 2. | 2.396 | $\frac{32}{17} \times \frac{28}{22}$ | 2.04 | $\frac{32}{17} \times \frac{27}{24}$ | 2.01 | $\frac{30}{19} \times \frac{28}{22}$ | 1.64 | $\frac{28}{21} \times \frac{27}{22}$ |
| 3. | 1.412 | $\frac{32}{17} \times \frac{21}{28}$ | 1.412 | $\frac{32}{17} \times \frac{21}{28}$ | 1.40 | $\frac{30}{19} \times \frac{23}{26}$ | 1.23 | $\frac{28}{21} \times \frac{24}{26}$ |
| 4. | | | | | | | | |
| 5. | 1.000 | Direct | 1.000 | Direct | 1.000 | Direct | 1.000 | Direct |

Type of final drive **Hypoid**
 Type of differential **Bevel and pinion**
 Final drive ratio **3.900** Alternatives **3.77, 4.125, 4.44, 4.7**
 No. of teeth **39/10** **34/9, 33/8, 40/9, 33/7**
 Overdrive ratio, if fitted **None**

WHEELS

Type **Steel disc** Weight **with tyre 12.7** kg.
 Method of attachment **Studs and nuts** **4J, 4½J, 5J, 5½J**
 Rim diameter **330.2** m.m. Rim width **101.6, 114.3, 127.0** **139.7** m.m.
 Tyre size: Front **5.60 x 13** Rear **5.60 x 13**

BRAKES

Method of operation **Hydraulic**
 Is servo assistance fitted? **No**
 Type of servo, if fitted
 No. of hydraulic master cylinders **One** Bore **15.875** m.m.



| | Front | | Rear |
|---|-------|------|-------|
| No. of wheel cylinders | Two | | Two |
| Bore of wheel cylinders | 48.06 | m.m. | 19.05 |
| Inside diameter of brake drums | - | m.m. | 228.6 |
| No. of shoes per brake | - | | Two |
| Outside diameter of brake discs | 241.3 | m.m. | - |
| No. of pads per brake | Two | | - |
| Dimensions of brake linings per shoe or pad (if all shoes or pads in each brake are not of same dimensions, specify each) | | | |

| | Front | | Rear |
|----------------------|-------|-------------------|-------------------|
| Length (nominal) | 60.45 | m.m. | 210.3 |
| | | m.m. | m.m. |
| Width | 47.63 | m.m. | 44.45 |
| Total area per brake | 5787 | m.m. ² | 18580 |
| | | | m.m. ² |

SUSPENSION

| | Front | | Rear |
|------------------------|--------------|--|--------------------|
| Type | Independent | | Longitudinal |
| Type of spring | Coil springs | | Semi-elliptic leaf |
| Is stabiliser fitted? | Yes | | No |
| Type of shock absorber | Telescopic | | Telescopic |
| No. of shock absorbers | Two | | Two |

STEERING

| | |
|--|--------------------|
| Type of steering gear | Recirculating ball |
| Turning circle of car | 10.973 |
| | m., approx. |
| No. of turns of steering wheel from lock to lock | 2½ or 3.7 |

CAPACITIES AND DIMENSIONS

Fuel tank 36.37 litres Sump 3.267 litres

Radiator 5.85 litres

Overall length of car 427.5 cm. Overall width of car 158.75 cm.

Overall height of car, unladen (with hood up, if appropriate) 142.24 cm.

Distance from floor to top of windscreen :

Highest point 106.0 cm. Lowest point 99.06 cm.

Width of windscreen :

Maximum width 123.83 cm. Minimum width 109.22 cm.

*Interior width of car 128.9 cm.

No. of seats Four

Track: Front 128.63 cm. Rear 127.36 cm.

Wheelbase 248.92 cm. Ground clearance 170.18 m.m.

*(To be measured at the immediate rear of the steering wheel, and the width quoted to be maintained in a vertical plane of not less than 25 cms.)

Overall weight with water, oil and spare wheel, but without fuel 728 kgs. 2 door
790 kgs. 4 door

Additional information for cars fitted with two-cycle engines

System of cylinder scavenging.....

Type of lubrication.....

Size of inlet port:

Length measured around cylinder wall.....m.m.

Height.....m.m. Area.....m.m.²

Size of exhaust port:

Length measured around cylinder wall.....m.m.

Height.....m.m. Area.....m.m.²

Size of transfer port:

Length measured around cylinder wall.....m.m.

Height.....m.m. Area.....m.m.²

Size of piston port:

Length measured around piston.....m.m.

Height.....m.m. Area.....m.m.²

Method of pre-compression.....

Bore and stroke of pre-compression cylinder, if fitted.....m.m.

Distance from top of cylinder block to lowest point of inlet port.....m.m.

Distance from top of cylinder block to highest point of exhaust port.....m.m.

Distance from top of cylinder block to highest point of transfer port.....m.m.

Drawing of cylinder ports.

Supercharger, if fitted

Make..... Model or Type No.....

Type of drive..... Ratio of drive.....

Fuel injection, if fitted

Make of pump..... Model or Type No.....

Make of injectors..... Model or Type No.....

Location of injectors.....

Optional equipment affecting preceding information:—

- 4
5
6
7
8
9
10
11
12
13
14
15
16
17
18
19
20
21
22
23
24
25
26
27
28
29
30
31
- Front underbody shield
Four blade fan
Fuel tank shield
51 AH battery
Additional fuel tanks, 36.37 litres and 56 litres
Variable speed electric wiper
Diaphragm type clutch with aluminium bell housing and aluminium gearbox
Aluminium differential housing Extension housing
Flywheel (weight 6.36 Kg)
Modified rocker cover
Two dowels locating flywheel to crankshaft
Locking wire to flywheel and main bearing bolts (tab washers and spring washers omitted)
Electric fuel pump - SU manufacture
Shorter push rods
Strengthened steel rocker shaft pedestal brackets
One piece crankshaft pulley
Copper - steel - asbestos cylinder head gaskets
Alternator - Lucas 10 AC - 30 amps
Special mounting brackets to accommodate alternator
Thicker generator adjusting straps
Modified fixing of generator to cylinder block
Heavy duty main bearing caps
Standard 116E G.T. pistons (Aluminium alloy) Part No. 116E-6110-A
Standard camshaft Part No. 116E-6250
Weber 28/36 D.C.D. 16/18 carburettor
Intake valve head dia. 1.410"
Exhaust valve head dia. 1.245"
Single valve springs Part No. 109E-6513
Twin tract intake manifold
Modified 116E G.T. combustion chamber
Flame trap air cleaner

Manufacturers Reference No. for Application

10/63/DAG



F.I.A. Recognition No.

1225

A

ROYAL AUTOMOBILE CLUB

PALL MALL, LONDON, S.W.1.

Federation Internationale de l'Automobile.

Amendment to Form of Recognition

Manufacturer FORD MOTOR COMPANY LIMITED

Model CORNUCOPUS CORTINA G.T. 1963

Add to Optional Equipment :

~~Self locking differential~~

Push Rods length 184.16 mm.

Correct diameter of Port at valve seat

Inlet 37.522

Exhaust 31.573



Stamp of F.I.A./R.A.C. to be affixed here

Date amendment is valid from

list 9/24

November 14/1963

Form: R.F.I.B.

Hubert Pharo

Manufacturers Reference No. for Application

10/63/DAG (2)



F.I.A. Recognition No. 1225 / 1

ROYAL AUTOMOBILE CLUB

PALL MALL, LONDON, S.W.1.

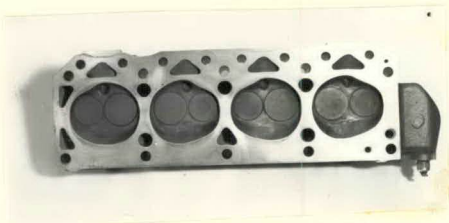
Federation Internationale de l'Automobile.

Amendment to Form of Recognition

Manufacturer FORD MOTOR COMPANY LIMITED

Model CONSUL CORTINA G.T.

Production change: Items No. 30 and No. 1 on Form of Variant 116E G.T. combustion chamber (minor modifications) - production tolerance in combustion chamber volume 33/36.5 cc - photograph attached.

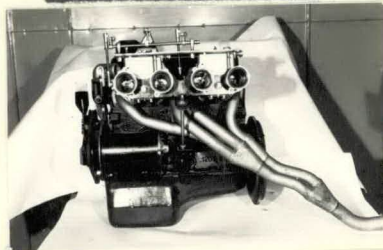


Production change: Engine - carburettor mounting - photographs attached.

Engine from left



Engine from right



Production change: Con rod - alternative supplier .682 kg + or - 4 grams.



Imp of F.I.A./R.A.C. to be affixed here.

Date amendment is valid from.....

Form: R.F.I.B.

Manufacturers Reference No. for Application

10/63/DAG



F.I.A. Recognition No. 1225

H/ET

ROYAL AUTOMOBILE CLUB

PALL MALL, LONDON, S.W.1.

Federation Internationale de l'Automobile.

Amendment to Form of Recognition

Manufacturer..... FORD MOTOR COMPANY LIMITED

Model..... CONSUL CORTINA G.T.

Production change: Item No. 30 Modified 116E G.T. combustion chamber - photograph attached.

Production change: Facia panel. Interior view of car through driver's door - photograph attached.



Correction to following dimensions:-

Diameter of valves: Inlet 39.60 mm to 39.75 mm
Exhaust 34.39 mm to 34.54 mm

Diameter of port
at valve seat: Inlet 37.522 mm
Exhaust 31.573 mm



Stamp of F.I.A./R.A.C. to be affixed here.

Date amendment is valid from.....

13 JANV 1964

Form: R.F.I.B.

Manufacturers Reference No. for Application

10/63/DAG



F.I.A. Recognition No.

1225

13/ET

ROYAL AUTOMOBILE CLUB

PALL MALL, LONDON, S.W.1.

Federation Internationale de l'Automobile.

Amendment to Form of Recognition

Manufacturer..... **FORD MOTOR COMPANY LIMITED**

Model..... **CONSUL CORTINA G.T.**

Production change: New grill plates, rear quarters, and rear axle radius arms were introduced into production of all Cortina G.T.'s effective date 31st August, 1964. A new facia panel was also introduced.

Effective chassis numbers: Z77C268043 - 2 door
 Z77C268049 - 4 door



Three quarters view of car from front right



Three quarters view of car from rear left

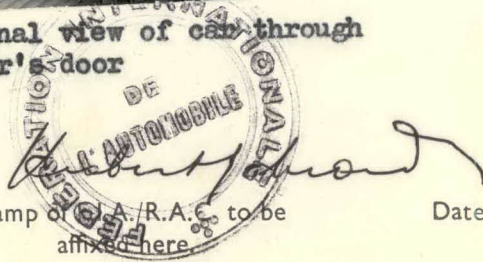


Internal view of car through driver's door



Rear axle complete less wheels.

Stamp of F.I.A./R.A.C. to be affixed here



Date amendment is valid from

16 Nov 1964

Form: R.F.I.B.

Manufacturers Reference No. for Application

10/63/DAG/E



F.I.A. Recognition No.

1225

B/V

ROYAL AUTOMOBILE CLUB

PALL MALL, LONDON, S.W.1.

Federation Internationale de l'Automobile.

Amendment to Form of Recognition

Manufacturer..... FORD MOTOR COMPANY LIMITED

Model..... CONSUL CORTINA G.T.

Additional Information

When fitted with 4 $\frac{1}{2}$ J or 5 $\frac{1}{2}$ J wheels the track width
is 52".



Stamp of F.I.A./R.A.C. to be
affixed here.

Date amendment is valid from.....

1st August 1965

Form: R.F.I.B.

Manufacturers Reference No. for Application

10/63/DAG/2B



F.I.A. Recognition No.

1225 B/V

ROYAL AUTOMOBILE CLUB

PALL MALL, LONDON, S.W.1.

Federation Internationale de l'Automobile.

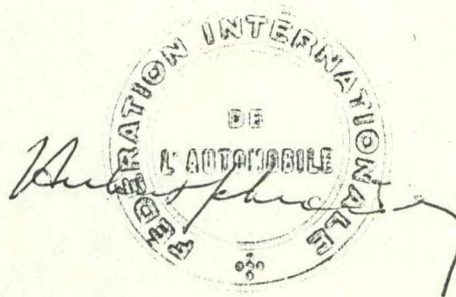
Amendment to Form of Recognition

Manufacturer..... FORD MOTOR COMPANY LIMITED

Model..... CORTINA G.T.

Production option for export markets:-

Alternative choke sizes: 32, 33 and 34 mm.



Stamp of F.I.A./R.A.C. to be affixed here.

Date amendment is valid from.....

Form: R.F.I.B.