

Manufacturers Reference No. for Application

SGT - 2A



F.I.A. Recognition No.

92

ROYAL AUTOMOBILE CLUB

PALL MALL, LONDON, S.W.1.

Federation Internationale de l'Automobile.

Form of Recognition in accordance with
Appendix J to the
International Sporting Code.

Manufacturer **SPEEDWELL PERFORMANCE CONVERSIONS LTD.**

Model **SPEEDWELL "G.T." 2A**

Year of Manufacture **1962**

Chassis **SPC/9302 - onwards**

Serial No. of

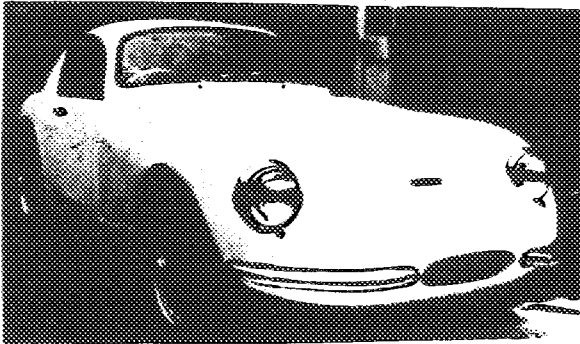
Engine **SPC/33333 - onwards**

Type of Coachwork **GRAND TOURING**

Recognition is valid from

20/11/62

In category **Grand Tourisme**



Dist 9/19

Photograph to be affixed here 3/4 view of car from front right.

SGT - 2A

Hebert



Stamp of F.I.A. R.A.C. to be
affixed here



Form: R.F.I.A.

General description of car:

Specify here materials of chassis/body construction

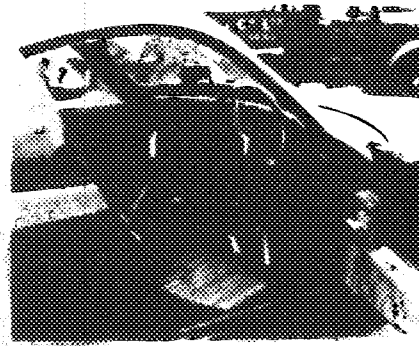
2 seat 2 door G.T. car having integral chassis/body structure of composite steel, aluminium alloy, and glass fibre/resin laminate independent front suspension via coil springs. Rear axle carried on $\frac{1}{2}$ elliptic leaf springs

Photographs to be affixed below.

3/4 view of car from rear left



Interior view of car through driver's door



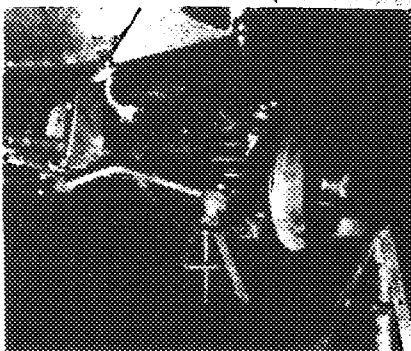
Engine unit with accessories from right.



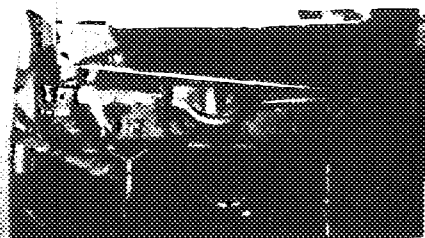
Engine unit with accessories from left.



Front axle complete (without wheels)



Rear axle complete (without wheels).



ENGINE

			in line	YES		
No of cylinders	4		in V			
			opposed			
Cycle	4		Firing order	1.3.4.2.		
Capacity	1080	c.c.	Bore	67	m.m.	Stroke 76.2 m.m.
Maximum rebore	67.75	mm				Resultant capacity 1098 c.c.
Material of cylinder block	CAST IRON					Material of sleeves, if fitted CAST IRON
Distance from crankshaft centre line to top face of block at centre line of cylinders			218.4			m.m.
Material of cylinder head	ALUMINIUM		Volume of one combustion chamber	22		c.c.
Compression ratio	12:1	ALLOY				
Material of piston	ALUMINIUM ALLOY		No. of piston rings	3		
Distance from gudgeon pin centre line to highest point of piston crown			34.09			m.m.
Bearings -	Crankshaft main bearings: Type	PLAIN			Dia. 44.463	m.m.
	Connecting rod big end: Type	PLAIN			Dia. 41.298	m.m.
	Flywheel	5.9		kg		
Weights -	Crankshaft	11		kg		
	Connecting rod	0.750		kg		
	Piston with rings	0.241		kg		
	Gudgeon pin	0.070		kg		
No. of valves per cylinder	2		Method of valve operation	O.H.V. PUSH ROD		
No. of camshafts	1		Location of camshafts	BLOCK		
Type of camshaft drive	CHAIN					
Diameter of valves	Inlet 35.0	mm	Exhaust	28.56		m.m.
Diameter of port at valve seat	Inlet 33.0	mm	Exhaust	25.4		m.m.
Inlet clearance for checking timing	Inlet 1.4	mm	Exhaust	1.4		m.m.
Valve open	Inlet 10° BTDC		Exhaust	45° BBDC		
Valve close	Inlet 50° ABDC		Exhaust	15° ATDC		
Maximum valve lift	Inlet 12.3	mm	Exhaust	12.3		m.m.
Degrees of crankshaft rotation from zero to—						
Maximum lift	Inlet 120°		Exhaust	120°		
Minimum lift	Inlet 103°		Exhaust	103°		
Valve springs		Inlet		Exhaust		
Type	HELICAL			HELICAL		
No. per valve	2			2		
Carburettor	Type HORIZONTAL		No fitted	4		
	(up or down draft, horizontal)					
Make	SPEEDWELL		Model	389/390		
Ring groove diameter	45	mm	Choke diameter	38		m.m.
Max. speed at full throttle	370/100					

Air filter: Type **NONE**

No. fitted

Inlet manifold:

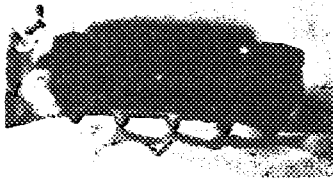
Diameter of flange hole at carburettor **45**

m.m.

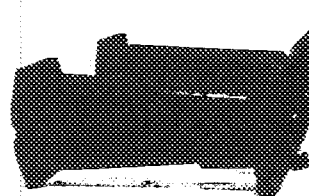
Diameter of flange hole at port **57**

m.m.

Photograph of combustion chamber to be affixed here.



Photograph of inlet manifold to be affixed here.



Exhaust manifold:

Diameter of flange hole at port **31.75**

m.m.

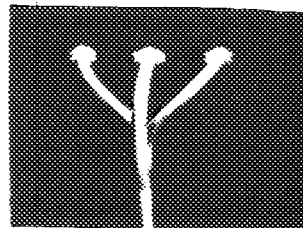
Diameter of flange hole at connection to silencer inlet pipe **NONE**

m.m.

Photograph of piston showing crown to be affixed here



Photograph of exhaust manifold to be affixed here



ENGINE ACCESSORIES

Make of fuel pump **SPEEDWELL / S.U.**

No. fitted

4

Method of operation **ELECTRICAL**

Type of ignition system **COIL**

coil or magneto

Make of ignition **LUCAS / BOSCH**

Model

SPEEDWELL

Method of advance and retard **AUTOMATIC**

Make of ignition coil **LUCAS / BOSCH**

Model

TK 12A9 - HA 12

No. of ignition coils **ONE**

Voltage

12V

Make of dynamo **LUCAS**

Model

C41

Voltage of dynamo **12V**

Maximum output

19

amps.

Make of starter motor **LUCAS**

Model

M35

Battery No. fitted **1** Voltage **12**

Capacity

43

amp. hour

Oil Collector fitted type **SECONDARY SURFACE**

Capacity

ONE

litre

Model **SPEEDWELL**

Model **"G.T" (A)**

F.I.A. Recognition No.

Manufacturers Reference No. of Application **SGT - 2A**

TRANSMISSION

Make of clutch **BURG AND BECK**

Type **DRY PLATE**

Diameter of clutch plate **158.75**

No. of plates **1**

Method of operating clutch **HYDRAULIC**

Make of gearbox **SPEEDWELL - BMC**

Type **"A"**

No. of gearbox ratios **5**

Method of operating gearshift **MANUAL**

Location of gearshift **FLOOR**

Is overdrive fitted? **NO**

Method of controlling overdrive, if fitted **-**

	GEARBOX RATIOS				ALTERNATIVE RATIOS			
	Ratio	No. of Teeth	Ratio	No. of Teeth	Ratio	No. of Teeth	Ratio	No. of Teeth
1.	2.569	13/32	3.627	13/32	3.2	13/32		
2.	1.681	18/29	2.374	18/29	1.916	19/28		
3.	1.233	22/26	1.412	23/24	1.357	23/24		
4.	1.000	-	1.000	-	1.000	-		
5.	3.3	13/18 14/32	4.664	13/18 14/32	4.114	13/18 14/32		

Type of final drive **HYPOID BEVEL**

Type of differential **LIMITED SLIP**

Final drive ratio **4.875**

Alternatives **5.38, 5.1, 4.55, 4.22, 3.9, 3.7**

No. of teeth **8/39**

8/43 8/41 9/41 9/38 10/39 11/41

Overdrive ratio, if fitted **NONE**

WHEELS

Type **BUDGE WHITWORTH**

Weight **4.75** kg.

Method of attachment **CENTRE LOCK**

Rim diameter **330** m.m.

Rim width **101.5** m.m.

Tyre size: Front **5.25 x 13**

Rear **5.25 x 13**

BRAKES

Method of operation **HYDRAULIC**

Is servo assistance fitted? **NO**

Type of servo, if fitted **NONE**

No. of hydraulic master cylinders **1**

Bore **22.2** m.m.

	Front		Rear	
No. of wheel cylinders	2		1	
Bore of wheel cylinders	50.8	m.m.	20	m.m.
Inside diameter of brake drums	--	m.m.	177.8	m.m.
No. of shoes per brake	--		2	
Outside diameter of brake discs	219	m.m.		m.m.
No. of pads per brake	2			
Dimensions of brake linings per shoe or pad (if all shoes or pads in each brake are not of same dimensions, specify each)				

	Front		Rear	
Length	60	m.m.	178	m.m.
		m.m.		m.m.
Width	42	m.m.	31	m.m.
Total area per brake	5040	m.m. ²	11036	m.m. ²

SUSPENSION

	Front		Rear	
Type	INDEPENDANT		1/2 ELLIPTIC	
Type of spring	COIL		LEAF	
Is stabiliser fitted?	YES		NO	
Type of shock absorber	HYDRAULIC		HYDRAULIC	
No. of shock absorbers	2		2	

STEERING

Type of steering gear	RACK AND PINION		
Turning circle of car	9.6		m., approx.
No. of turns of steering wheel from lock to lock	2.25		

CAPACITIES AND DIMENSIONS

Fuel tank	85	litres	Sump	4	litres
Radiator	5.68	litres			
Overall length of car	370	cm.	Overall width of car	143	cm.
Overall height of car, unladen (with hood up, if appropriate)	122	cm.			
Distance from floor to top of windscreen:					
Highest point	91.5	cm.	Lowest point	91.5	cm.
Width of windscreen:					
Maximum width	98	cm.	Minimum width	96	cm.
*Interior width of car	114	cm.			
No. of seats	2				
Track: Front	120	cm.	Rear	121	cm.
Wheelbase	203	cm.	Ground clearance	130	m.m.

* (To be measured at the immediate rear of the steering wheel, and the width quoted to be maintained in a vertical plane of not less than 25 cms.)

Overall weight with water, oil and spare wheel, but without fuel 520 kgs.

Additional information for cars fitted with two-cycle engines

System of cylinder scavenging

Type of lubrication

Size of inlet port:

Length measured around cylinder wall m.m.

Height m.m. Area m.m.²

Size of exhaust port:

Length measured around cylinder wall m.m.

Height m.m. Area m.m.²

Size of transfer port:

Length measured around cylinder wall m.m.

Height m.m. Area m.m.²

Size of piston port:

Length measured around piston m.m.

Height m.m. Area m.m.²

Method of pre-compression

Bore and stroke of pre-compression cylinder, if fitted m.m.

Distance from top of cylinder block to lowest point of inlet port m.m.

Distance from top of cylinder block to highest point of exhaust port m.m.

Distance from top of cylinder block to highest point of transfer port m.m.

Drawing of cylinder ports.

Supercharger, if fitted

Make Model or Type No.

Type of drive Ratio of drive

Fuel injection, if fitted

Make of pump Model or Type No.

Make of injectors Model or Type No.

Location of injectors

Optional equipment affecting preceding information:—

~~Equipment declared in homologation application~~

~~507-21~~



SPEEDWELL GT 2A

MARQUE ET MODELE

1/63-

VALIDITE HOMOLOGATION

92

FICHE NR.

GT/1150

GROUPE / CLASSE

EXTENSIONS	DEBUT VALIDITE	DESCRIPTION	NOTES

Autres homologations du modèle

Vérifiée le 22/7/96 par visée ce jour le _____ par _____