

GR III
614



Telephone: (203) 348-6233

Cable Address: "ACCUSFIA" Stamford, Conn.

AUTOMOBILE COMPETITION COMMITTEE FOR THE UNITED STATES, F.I.A., INC.

433 MAIN STREET, STAMFORD, CONN. 06901

Federation Internationale de l'Automobile



STANDARD CERTIFICATE OF PRODUCTION

In accordance with Appendix "J" of the International Sporting Code

Name of Manufacturer SHELBY AUTOMOTIVE CO., INC.

Make of Car Shelby Model 1969 Cobra GT-500 428

We certify that 500 cars identical with the basic specification, as well as 500 cars as modified by the listed optional equipment (when required by Appendix "J"), were completed as of December 31, 1968.

Cars conforming to this specification may be identified by chassis numbers 9-02-480001, and engine numbers None.

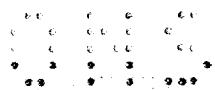
Signed:

R. A. Geddes
R. A. Geddes, Manager
Shelby Automotive Marketing

G. F. Merwin
G. F. Merwin - Shelby Automotive
Marketing

Certified:

John V. Oliveau
JOHN V. OLIVEAU
TECHNICAL DIRECTOR
ACCUSFIA, Inc.





Telephone: (203) 348-6233

Cable Address: "ACCUSFIA" Stamford, Conn

AUTOMOBILE COMPETITION COMMITTEE FOR THE UNITED STATES, INC.

433 MAIN STREET, STAMFORD, CONN. 06901

Federation Internationale de l'Automobile
FORM OF RECOGNITION

In accordance with Appendix "J" of the International Sporting Code

I N D E X

<u>ITEM</u>	<u>NUMBERS</u>	<u>PAGES</u>
Basic Data & Photo		1
Photos		2-3
Sketches		4
Capacities & Dimensions	1-9	5
Chassis & Bodywork	20-32	6
Accessories & Upholstery	38-45	6
Wheels	50-54	6
Steering	70-82	6-7
Brakes	90-105	7
Engine	130-203	8-10
Carburetion	210-216	10
Injection	220-225	10
Engine Accessories	230-241	11
Engine & Car Performance	250-253	11
Drive Train	260-293	11-12
Optional Equipment		13-14
Variants & Evolutions, if any		

CONVERSION TABLE:

1 inch / pouce	2.54 cm	
1 foot / pied	30.479 cm	
1 square inch / pouce carre	6.452 cm ²	
1 cubic inch / pouce cube	16.387 cm ³	
1 pound (lb.) / livre	453.593 gr	
1 pint (U.S.)	.473 ltrs	.833 pt. Imp.
1 quart (U.S.)	.946 ltrs	.833 qt. Imp.
1 gallon (U.S.)	3.785 ltrs	.833 gal. Imp.
1 pint (Imp.)	.568 ltrs	1.20 pt. U.S.
1 quart (Imp.)	1.136 ltrs	1.20 qt. U.S.
1 gallon (Imp.)	4.546 ltrs	1.20 gal. U.S.



AUTOMOBILE COMPETITION COMMITTEE
FOR THE UNITED STATES, F.I.A., INC.

433 MAIN ST.
STAMFORD, CONN. 06901
(203) 348-6233

614 GT500
428
G111

Federation Internationale de l'Automobile
FORM OF RECOGNITION

In accordance with Appendix "J" of the International Sporting Code

Cylinder capacity 7003.2 cm3 427.36 in3

Manufacturer Shelby Automotive Co., Inc. Model 1969 Cobra GT500 428

Serial # Chassis 9_02_480001 Manufacturer Ford

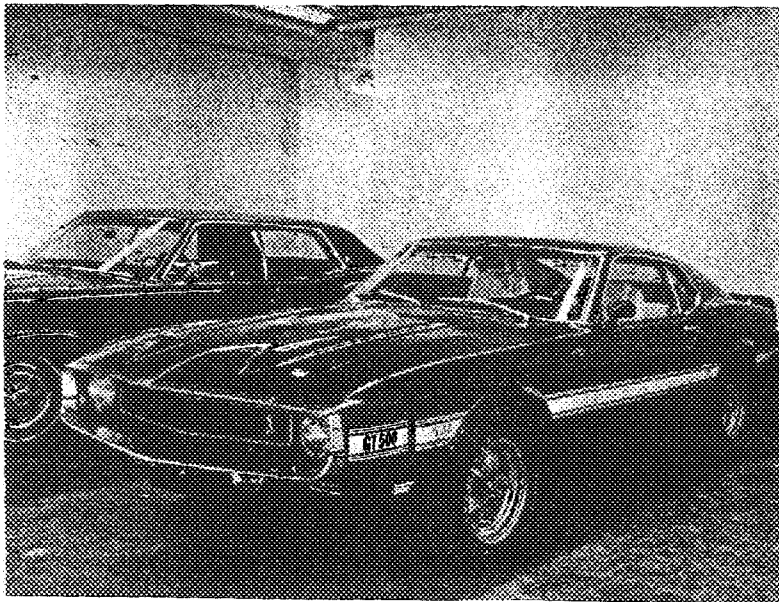
Serial # Engine none Manufacturer Ford

Recognition valid from _____ List _____

The manufacturing of the model described in this recognition form was started on Sept. 9, 1968 and the minimum production of 1,000 identical cars, in accordance with the specifications of this form, was reached on Dec. 31, 1968.

- (*) need not be answered for Group II and III cars.
- (**) only need to be answered for Group IV cars.

A 3/4 Front View Car **



The vehicle described in this form has been subject to the following amendments:

Variants
 on 19 rec # list
 on 19 rec # list
 on 19 rec # list

Normal evolution of the type
 on 19 rec # list
 on 19 rec # list
 on 19 rec # list

Stamp/Signature of National Sporting Authority

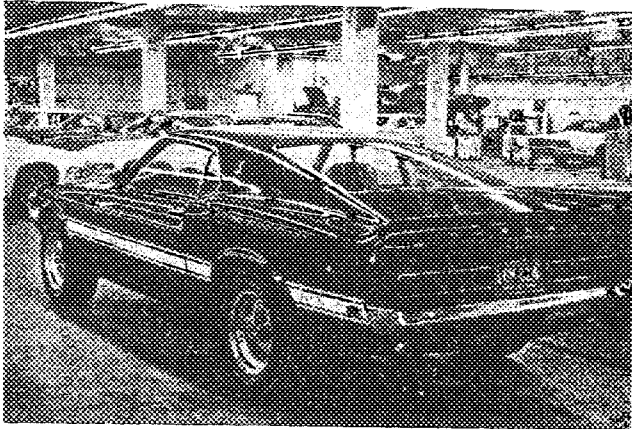
John V. Oliveau
JOHN V. OLIVEAU
TECHNICAL DIRECTOR
ACCUS, F.I.A., INC.



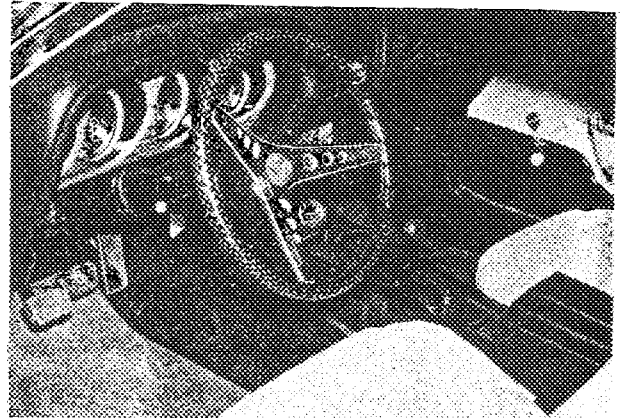
Stamp/Signature F.I.A.

1.4.1969

B 3/4 rear car (**)

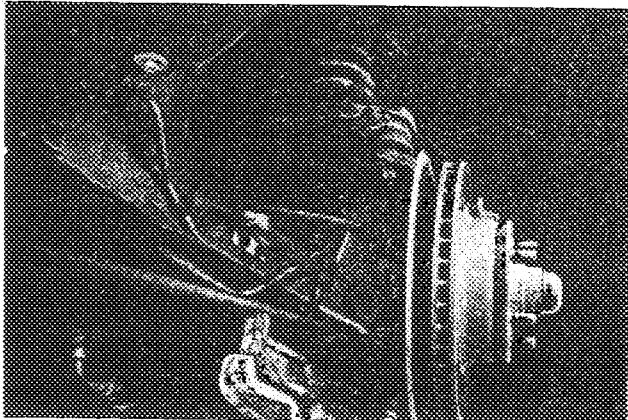


C interior-car (**)

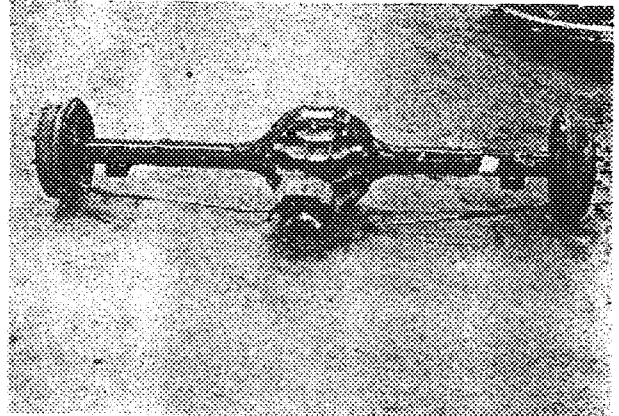


GT500
428
G111

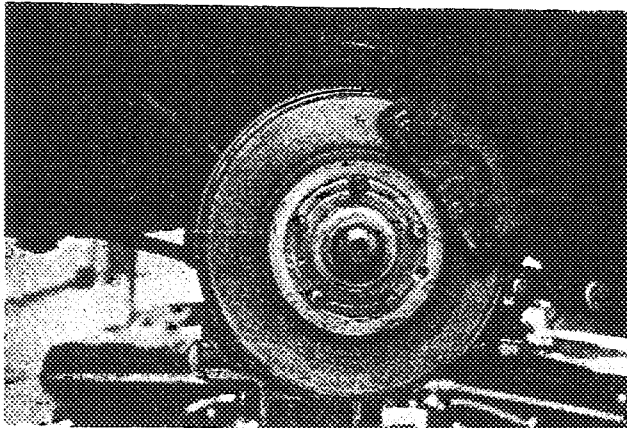
D front axle (**)



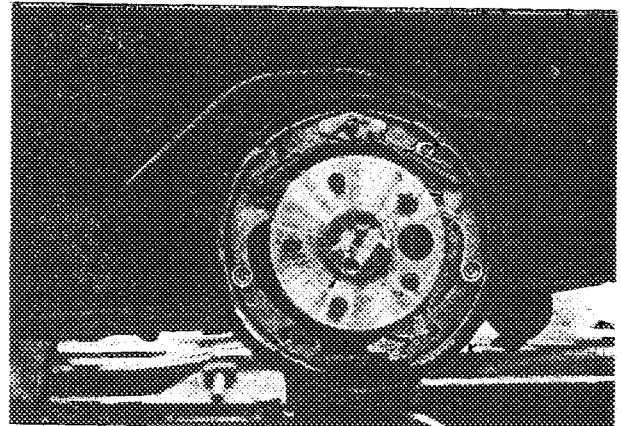
E rear axle (**)



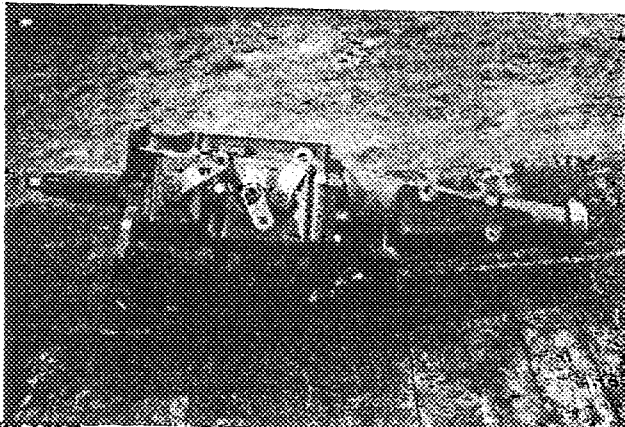
F brake, front (**)



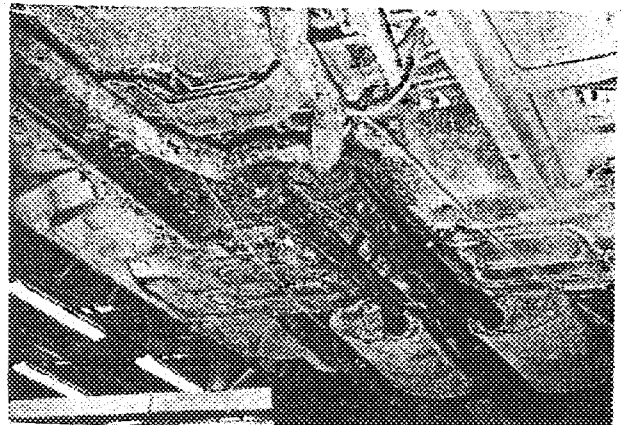
G brake, rear (**)



H gear box (**)



I exhaust system (*)



STAMP

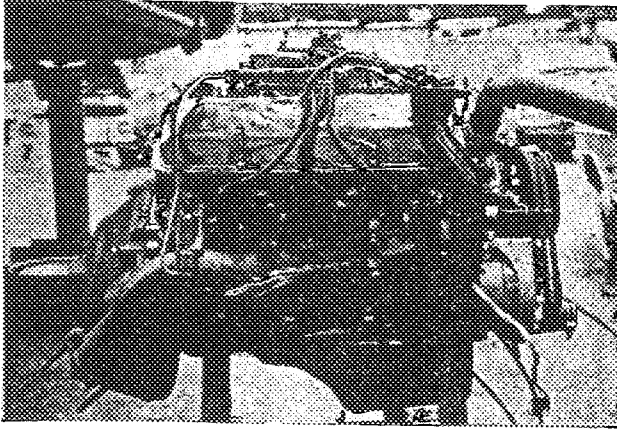
STAMP

MAKE Shelby

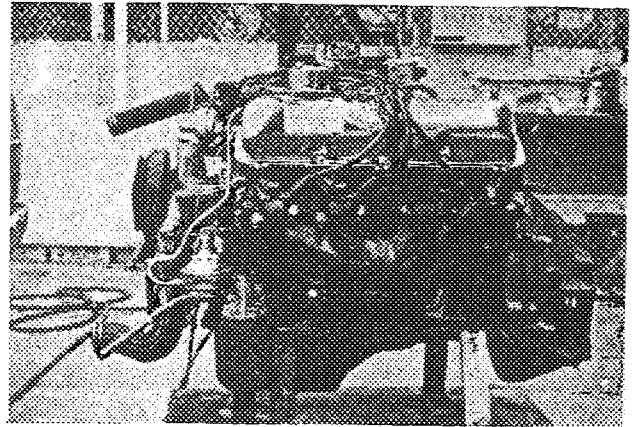
MODEL 69 Cobra GT500 428FIA REC # 614

GT500
428
G111

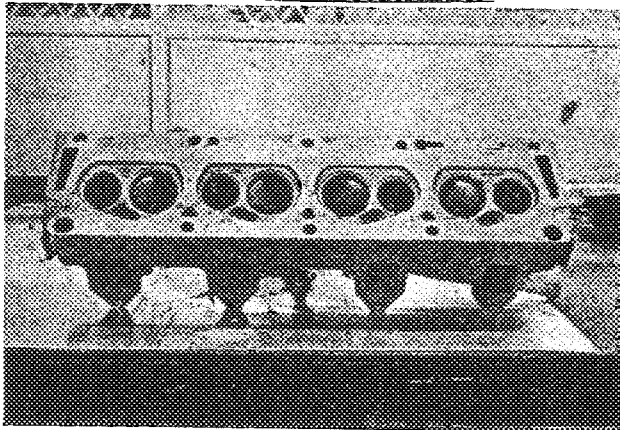
J ENGINE RIGHT (**)



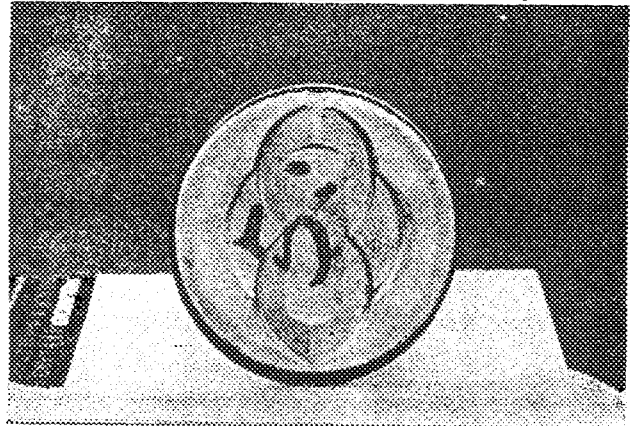
K ENGINE LEFT (**)



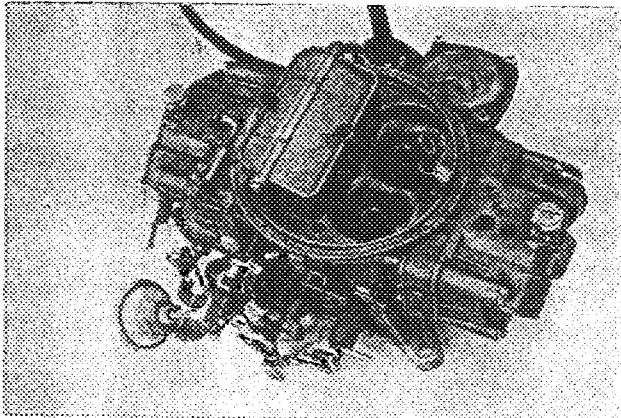
L COMBUSTION CHAMBER



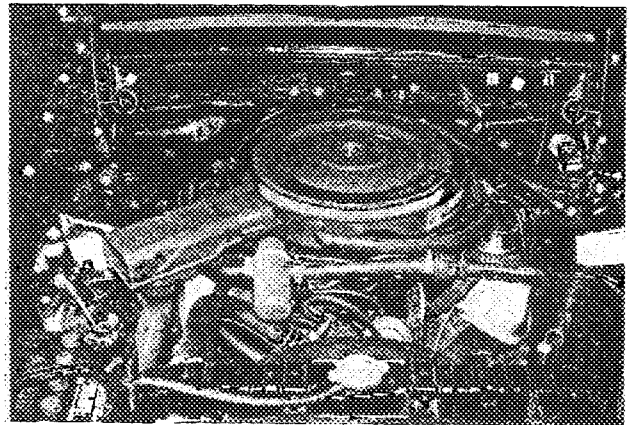
M PISTON TOP (*)



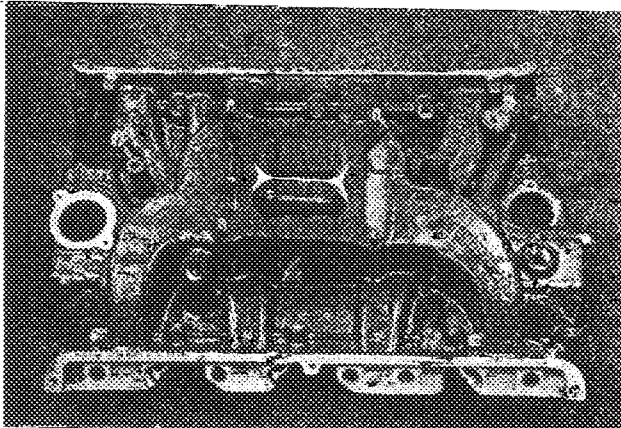
N CARBURETOR (*)



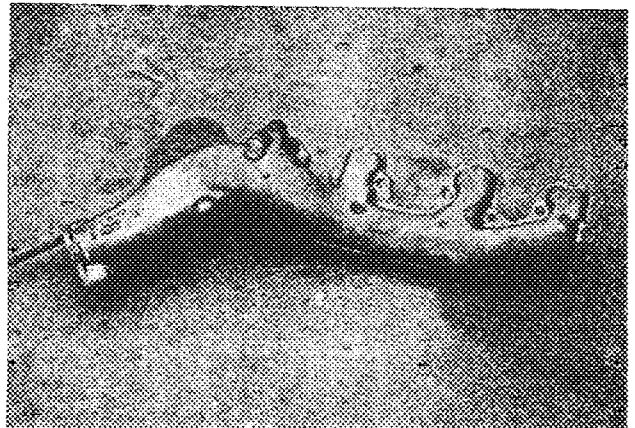
O ENGINE IN PLACE (**)



P MANIFOLD INLET



Q MANIFOLD EXHAUST

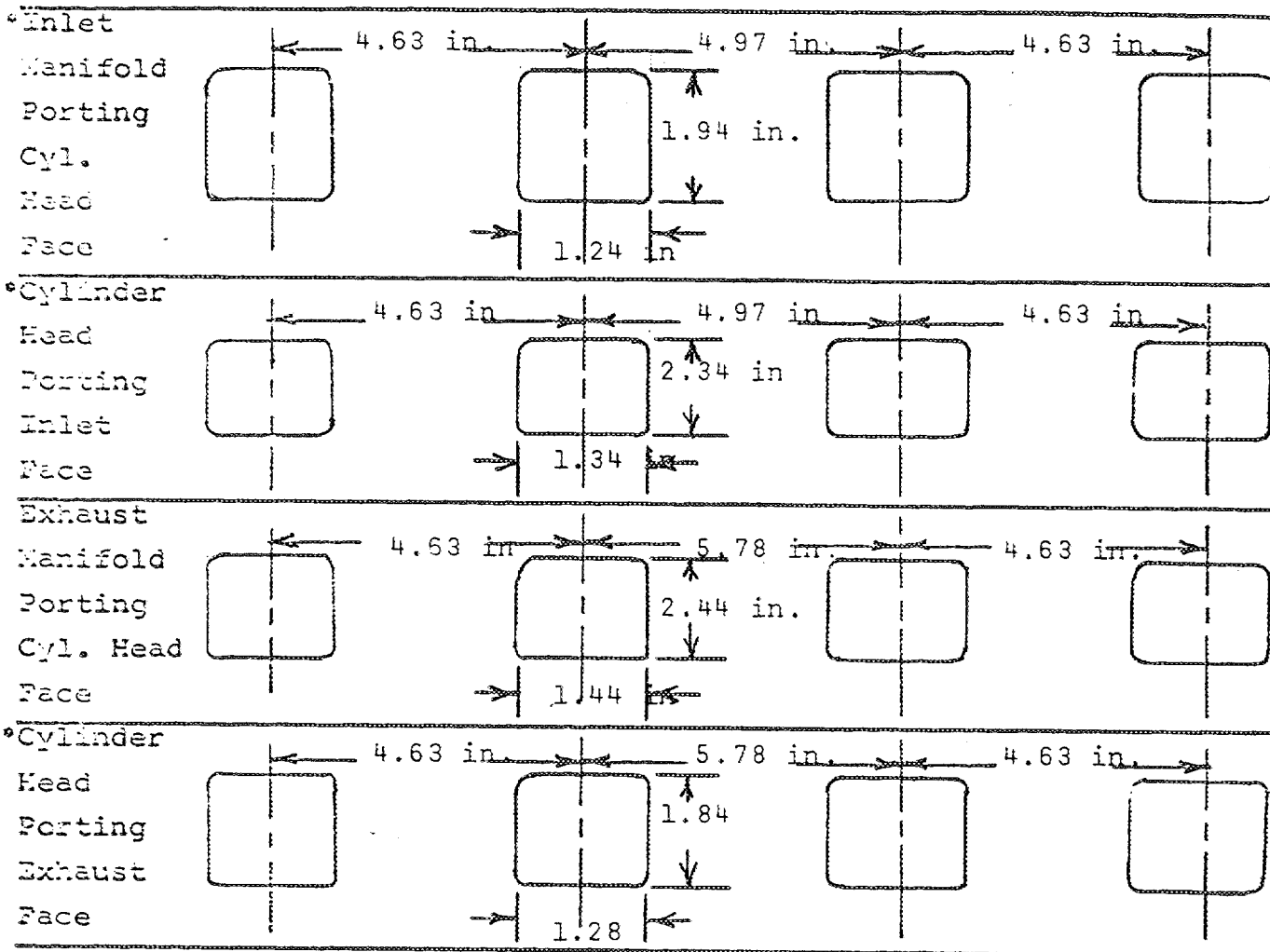


Strip out: ALL SKETCHES MUST INDICATE ACTUAL DIMENSIONS AND MANUFACTURER'S TOLERANCES.

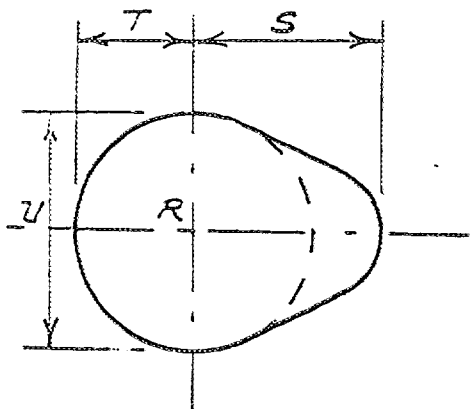
STAMP

STAMP

ALL SKETCHES MUST INDICATE ACTUAL DIMENSIONS AND MANUFACTURER'S TOLERANCES. +/- .04 in. or 1 mm



CAM



Inlet cam

S =	26.31	mm	1.036	in
T =	20.24	mm	.797	in
U =	37.95	mm	1.494	in

Exhaust cam

S =	26.31	mm	1.036	in
T =	20.24	mm	.797	in
U =	37.95	mm	1.494	in

STAMP

STAMP

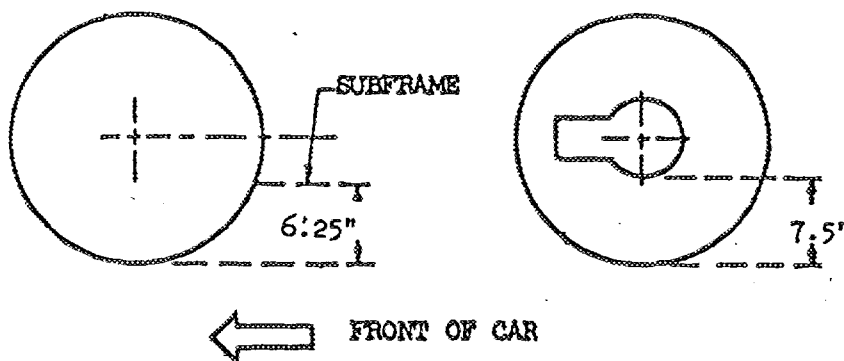
IMPORTANT: Questions 1 through 9 must be answered in two measuring systems, one of which must be the metric system.
See conversion table at index.

CAPACITIES & DIMENSIONS

- (**) 1. Wheelbase 2743.2 mm 108.0 in
 - (**) 2. Front track 1539.2 mm 60.6 in + at 0 deg camber
 - (**) 3. Rear track 1531.6 mm 60.3 in + 0" toe-in
- + Differences in track resulting from use of optional wheel and rim sizes must be stipulated on recognition application forms. ** see note below

Dimensional relationship between track (front and/or rear) and ground clearance resulting from use of optional wheel sizes shall also be stipulated and a sketch illustrating suspension reference points shall be shown below to establish the "reference chassis height." The reference chassis height dimension is to be used only when checking track and shall not affect eligibility of car in any manner.

Sketch, Ground Clearance: Dimensional Suspension & Chassis Reference Points"



** note Geometry changes in front suspension will alter track

- 4. Overall length of car 4841.24 cm 190.6 in
- 5. Overall width of car 182.63 cm 71.9 in
- 6. Overall height of car 128.0 cm 50.6 in
- 7. Capacity of fuel tank (reserve included) 75.70/140 ltrs.
20/37 gallons US gallons, Imp.
- 8. Seating capacity four (4)
- (**) 9. Weight - total weight of car with normal equipment, water, oil and spare wheel but without fuel or repair tools. 1292.8 kg 2850 lbs

STAMP

STAMP

CHASSIS & BODYWORK - Photos A, B, C

- (**) 20. Chassis/body construction - separate/unit construction
- (**) 21. Unit construction - material/s sheet steel
- (**) 22. Chassis - material/s steel separate construction
- (**) 23. Body - material/s steel / fiberglass separate construction
- (**) 24. Doors - number two (2) material/s steel
- (**) 25. Hood - material/s fiberglass
- (**) 26. Trunk Lid - material/s fiberglass
- 27. Window, Rear - material/s glass
- 28. Windshield - material/s glass
- 29. Windows, front door - material/s glass
- 30. Windows, rear door - material/s none
- 31. Windows - actuating system regulator
- 32. Window, rear quarter - material/s glass

ACCESSORIES AND UPHOLSTERY

- 38. Heating, interior - yes no optional
- 39. Air conditioning - yes no optional
- 40. Ventilation - yes no
- (*) 41. Seats, front - type of seat and upholstery bucket/ vinyl
- 42. Seats, front - weight
(complete with supports & rails out of car) 14.8 kg 32.5 ea lbs
- CHECK: BENCH _____ BUCKET x CONSOLE INCLUDED _____ optional
- 43. Seats, rear - type of seat and upholstery bench/vinyl
- 44. Bumper, front - material/s steel kg 5.13 lbs 11.3 Weight
- 45. Bumper, rear - material/s steel kg 5.76 lbs 12.7 Weight

WHEELS

- 50. Type steel or magnesium
- 51. Weight (per wheel, without tire) 5.9 kg 13 lbs
- 52. Method of attachment studs and nuts (5)
- 53. Rim, diameter 381 mm 15 in
- 54. Rim, width 178/203 mm 7/8 in

STEERING

- 60. Type recirculating ball and nut
- 61. Servo assistance optional
- 62. Number of turns of steering wheel from lock to lock 3.74/4.64
- 63. In case of servo assistance 3.74

STAMP

STAMP



SUSPENSION

- (**) 70. Suspension, front (photo D) - type independent
- (**) 71. Spring - type coil
- (*) 72. Stabilizer - if fitted yes
- 73. Shock absorbers - number two (2)
- 74. Type tubular-adjustable
- (**) 78. Suspension, rear (photo E) - type live axle
- (**) 79. Spring - type leaf
- (*) 80. Stabilizer - if fitted sway bar/ traction bar
- 81. Shock absorbers - number two (2)
- 82. Type tubular adjustable

BRAKES (Photos E and F)

- (**) 90. Method of operation hydraulic
 - (*) 91. Power assisted (if fitted) - type Pedal Boost
 - 92. Master Cylinders - number and type (indicate if duplex master cylinder)
 - 93. Cylinders - number per wheel
 - 94. Cylinders - wheel bore 60.2 mm (indicate stepped bore dimensions if applicable)
- | | <u>Front</u> | <u>Rear</u> |
|--|--------------|-------------|
| | one (1) | one (1) |
| | 2.375 in | 2.22 in |
| | mm | mm |

Drum Brakes

- | | <u>Front</u> | <u>Rear</u> |
|------------------------------|-----------------|---|
| 95. Diameter, inside | mm | in 254 mm 10.0 in |
| 96. Linings, length | mm | in 495 mm 19.5 in |
| 97. Linings, width | mm | in 44.4 mm 1.75 in |
| 98. Shoes - number per brake | | two (2) |
| 99. Area, total - per brake | mm ² | in ² mm ² in ² |
| | | 22017.5 34.125 |

Disc Brakes

- | | | | | |
|------------------------------|--------------------------|----------------------|-----------------|-----------------|
| 100. Diameter, outside | 287 mm | 11.3 in | mm | in |
| 101. Thickness of disc | 23.81 mm | .9375 in | mm | in |
| 102. Lining - length | 124.5 mm | 4.9 in | mm | in |
| 103. Lining - width | 52.6 mm | 2.07 in | mm | in |
| 104. Pads - number per brake | | two (2) | | |
| 105. Area, total - per brake | 13,097.4 mm ² | 20.2 in ² | mm ² | in ² |

STAMP

STAMP

MAKE Shelby MODEL '69 Cobra GT-500 FIA REC # 428

- (*) 156. Fan, cooling (if fitted) - diameter 46.35 cm 18.25 in
- (*) 157. Fan, cooling - number of blades seven(7) material/s steel

BEARINGS

- (**) 158. Crankshaft, main - type insert diameter 69.81 mm 2.7488 in
- (**) 159. Connecting rod, big end - type insert diameter 61.94 mm 2.4384 in

WEIGHTS

- (*) 160. Flywheel (clean) 12.92 kg 28.5 lbs
- (*) 161. Flywheel with clutch (all rotating parts) 24.44 kg 53.9 lbs
- (*) 162. Crankshaft 29.70 kg 65.5 lbs
- 163. Connecting Rod .940 kg 2.07 lbs
- (*) 164. Piston with rings & pin 1.853 kg 4.70 lbs

FOUR CYCLE ENGINES

- (**) 170. Camshafts - number one(1) material/s alloy iron
- (**) 171. Camshaft - location cylinder block
- (**) 172. Camshaft Drive, type chain
- (**) 173. Valve operation - type tappet, pushrod, rocker

INLET (See Photo P) (for addtl info re 2 stroke engines and super charged, see page 15)

- 180. Inlet manifold - materials cast iron
- 181. Valves (overall) - diameter 53.26 mm 2.097in
- (*) 182. Valve lift - maximum 12.7 mm .500in
- 183. Springs, valve - number two(2)
- 184. Spring - type coil and flat
- (**) 185. Valves, per cylinder - number one(1)
- (*) 186. Tappet - clearance for checking timing (cold)
- (*) 187. Valves - open at (with tolerance for tappet clearance indicated) hydraulic 18deg. BTC
- (*) 188. Valves - close at (with tolerance for tappet clearance indicated) 72 deg. ABC
- (*) 189. Air filter - type dry element

STAMP

STAMP



MAKE Shelby

428
MODEL '69 Cobra GT-500 RIA REC # 614 428
GT-500
G 111

EXHAUST (See Photo Q)

195. Manifold, exhaust - material/s cast iron
196. Valves (overall) - diameter 42.16 mm 1.660 in
197. Valve, lift - maximum 12.7 mm .500 in
198. Valve Springs/valve - number Two (2)
199. Springs - type coil and flat
- (**) 200. Valves - number per cylinder one (1)
- (*) 201. Tappet - clearance for checking timing (cold) mm in hydraulic
- (*) 202. Valves - open at (with tolerance for tappet clearance indicated) 82 deg BBC
- (*) 203. Valves - close at (with tolerance for tappet clearance indicated) 28 deg ATC

CARBURETION (See Photo N)

210. Carburetors, fitted - number one (1)
211. Type downflow
- (*) 212. Make Autolite
- (*) 213. Model 9510
214. Carburetors - number of mixture passages four (4)
- (*) 215. Carburetor - flange hole diameter of exit port 42.86 mm 1.6875 in
216. Venturi - throat diameter+ 31.75 mm 1.25 pri in
35.05 1.38 sec

INJECTION

220. Pump - make none fitted
221. Plungers - number
- (*) 222. Pump - model
223. Injectors - location
224. Injectors - total number
- (*) 225. Inlet pipe - minimum diameter mm in

+ For variable throat type carburetors, indicate minimum lift of shutter mechanism such as pistons in S.U.

STAMP

STAMP



ENGINE ACCESSORIES

- (*) 230. Pump, fuel - mechanical and/or electrical
- 231. Number fitted one (1) each- two (2) total
- 232. Ignition system - type Battery and coil
- 233. Distributors - number one (1)
- 234. Coils, ignition - number one (1)
- 235. Spark plugs - number per cylinder one (1)
- 236. Generator (or Alternator) - number fitted one (1)
- 237. Drive - method belt
- 238. Voltage, generator - volts 12.8
- 239. Battery - number one (1)
- 240. Location Front
- 241. Voltage - volts 12 amp hrs 80

ENGINE & CAR PERFORMANCE as declared by mfr. in catalogue

- (*) 250. Horsepower - maximum engine output 335 at 5200 rpmSAE
(indicate SAE or DIN)
- (*) 251. RPM - maximum 5200 output at that figure 335
- (*) 252. Torque - maximum 440 at 3400 rpm
- (*) 253. Speed - maximum km/hour miles/hour

DRIVE TRAIN

Clutch

- 260. Type Dry plate
- 261. Plates - number of driven one (1)
- 262. Plates - diameter 29.21 cm 11.5 in
- 263. Linings - diameter - inside 17.78 cm 7.0 in
- Linings - diameter - outside 29.21 cm 11.5 in
- 264. Method of operation Mechanical

STAMP

STAMP



MAKE Shelby

428
MODEL 69 Cobra GT500 FIA REC #

614

GT500
428
G111

Gear Box (Photo H)

- (**) 270. Manual type - make Ford
- (**) 271. Ratios, forward - number four (4)
- 272. Ratios, forward - number synchronized four (4)
- 273. Gear-Shift - location floor optional
- (**) 274. Automatic - make Ford type hydraulic, with planetary gears and torque convertor
- (**) 275. Ratios, forward - number three (3)
- 276. Gear-Shift - location floor

277.	Manual		Automatic		Alternative manual/automatic			
	Ratio	# Teeth	Ratio	# Teeth	Ratio	# Teeth	Ratio	# Teeth
1	2.32	$\frac{23}{25} \frac{32}{15}$	2.46	Torque converter max. ratio at stall 2.02:1	2.78	$\frac{23}{30} \frac{32}{15}$		
2	1.69	$\frac{23}{25} \frac{28}{18}$	1.46		1.93	$\frac{23}{30} \frac{31}{21}$		
3	1.29	$\frac{23}{25} \frac{25}{21}$	1.00		1.36	$\frac{23}{30} \frac{25}{24}$		
4	1.00	direct			1.00	direct		
5								
6								
reverse	2.32		2.175			2.78		

- 278. Overdrive - type none fitted
- 279. Forward gears on which overdrive can be selected
- 280. Overdrive - ratio

FINAL DRIVE

- (**) 290. Type hypoid, semi floating straddle mounted pinion
- (**) 291. Differential - type locking, by ratchet or roller
- (**) 292. Limited Slip Differential (if fitted) - type \neq positive locking, by ratchet or roller
- 293. Ratio 3.00 3.10 3.25 3.40 3.50 3.70 3.91 4.11 4.33 4.57
- Teeth - number $\frac{32}{13}$ $\frac{31}{10}$ $\frac{39}{12}$ $\frac{34}{10}$ $\frac{35}{10}$ $\frac{37}{10}$ $\frac{43}{11}$ $\frac{37}{9}$ $\frac{39}{9}$ $\frac{32}{7}$
- (\neq) Specify friction or positive locking type . STAMP 4.71 4.86 5.14
- STAMP $\frac{33}{7}$ $\frac{34}{7}$ $\frac{36}{7}$

MAKE Shelby

MODEL 69 Cobra GT500 428 FIA REC # 614

GT500
428
G111

IMPORTANT

The conformity of the car with the following items of the present recognition form is to be disregarded during the technical inspection when the vehicle has been entered in Group II (Touring Cars) or III (Grand Touring Cars):

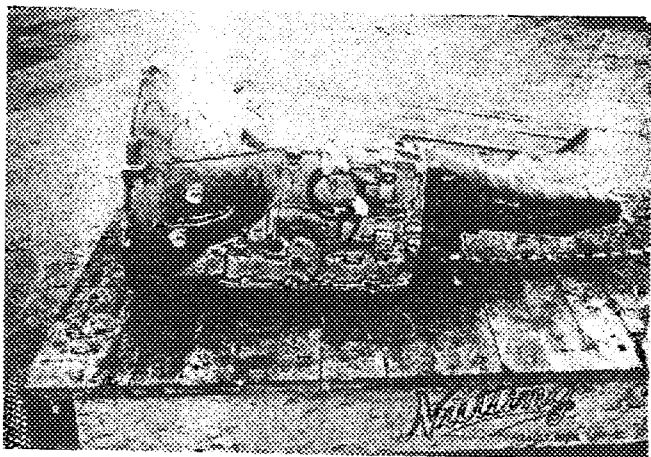
41, 72, 80, 91, 142, 143, 144, 145, 146, 153, 156, 157, 160, 161, 162, 163, 164, 182, 186, 187, 188, 189, 201, 202, 203, 212, 213, 215, 216, 222, 225, 230, 250, 251, 252, 253, 255, photos I, M, N & items on page 5 as indicated.

During the technical inspection of cars entered in Group IV (Sports Cars) only the following items of the present recognition form are to be taken into consideration:

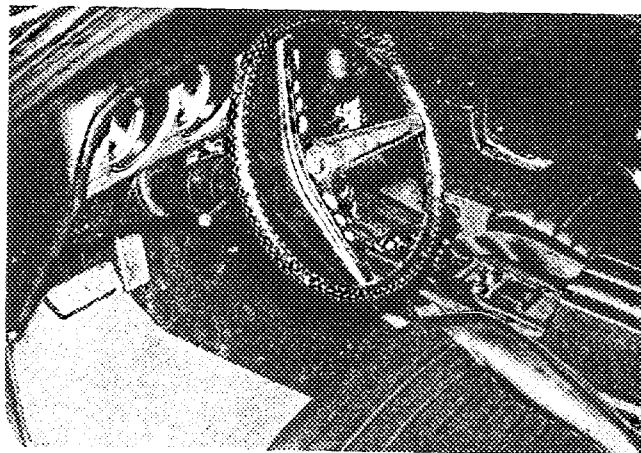
1, 2, 3, 9, 20, 21, 22, 23, 24, 25, 26, 70, 71, 78, 79, 90, 130, 131, 132, 133, 134, 135, 136, 137, 138, 139, 140, 141, 147, 148, 149, 150, 158, 159, 170, 171, 172, 173, 185, 200, 270, 271, 274, 275, 290, 291, 292 & photos A, B, D, E, F, G, H, J, K, O.

Optional equipment affecting preceding information:

CATALOGUE PART NUMBER MUST BE GIVEN



Automatic Transmission Photo H



Interior with Automatic Transmission

STAMP

STAMP



Optional Equipment - CATALOGUE PART NUMBER MUST BE GIVEN

- S7MS-6675-B Sump Guard 17.4 lbs.
 ----- Staggered shock absorber mounts - rear
 S8MR-2025-A Rear Disc Brake kit, includes: 65 lbs.
 2-Brake rotors-ventilated
 2-Caliper assemblies - R.H. + L.H.
 2-Brackets, cal per mounting RH + LH
 2-Hubs, with required bearing assemblies, lines, fittings
 and attaching parts.
 Applicable dimensions
 100. Diameter outside 11.3 in. 287 mm.
 101. Thickness of rotor .94 in. 24.2 mm.
 102. Lining-Length 4.875 in. 123 mm
 103. Lining-width 1.81 in. 45.97 mm
 104. Pads-no. per brake two (2)
 105. Area-total per brake 17.65 in 2 12,214 mm 2

Alternate Wheel-8" front track - 60.6
 rear track - 59.5

277.	Manual	Manual
	Ratio Teeth	Ratio Teeth
1.	2.36 $\frac{26}{29} \frac{36}{17}$	2.20 $\frac{27}{28} \frac{36}{17}$
2.	1.62 $\frac{26}{29} \frac{29}{20}$	1.42 $\frac{27}{28} \frac{26}{19}$
3.	1.20 $\frac{26}{29} \frac{27}{25}$	1.19 $\frac{27}{28} \frac{24}{21}$
4.	1.00 Direct	1.00 Direct

- S8MR-2025-B Front disc brake fit-four piston, includes : 21 lbs.
 2- Caliper assemblies R.H. & L.H. (piston Bore-1.625"-41.3mm)
 2- Brackets, caliper mounting R.H. & L.H., Lines, fittings +
 attaching parts.

- S8MR-2025-C Front disc brake kit-includes: 75 lbs.
 2-Brake rotors-ventilated
 2-Caliper assemblies RH & LH
 2-Brackets, Caliper mounting RH & LH
 2-Hubs, with required bearing assemblies, lines, fittings, and
 attaching parts.
 Applicable dimensions:
 100. Diameter, outside 11.96 in 303.8 mm
 101. Thickness of rotor 1.25 in. 31.8 mm
 102. Lining length 5.36 in. 136.1 mm
 103. Lining width 1.90 in. 48.3 mm
 104. Pads-no. per brake two (2)
 105. Area, total per brake 20.36 in 2 13,147.3 mm 2

STAMP

STAMP

- K9MR-5790-A Watts linkage, rear axle
7379020 Deletion option, deletes all sealers, sound deadeners, and outside trim
- S1MR-61615-A Bucket seat assembly, driver and passenger, 12 pounds each.
- S7MR-6650-B Differential cooler kit, includes:
1-Radiator, oil
1-Duct, air and flange assembly
1-Plenum box
2-Pump, oil circulating
1-Bracket, pump mount
required lines, fittings & attaching hardware
- S8MR-7009-A Transmission cooler kit, includes:
1-Radiator, oil
1-Duct, air and flange assembly
1-Plenum box
1-Pump, oil circulating
required lines, fittings and attaching hardware
- S9MR-10849-A High performance instrument cluster, includes:
1-Panel, instrument
1-Tachometer
1-Oil pressure gauge
1-Temperature gauge
1-Water temperature gauge
1-Fuel pressure gauge
1-Speedometer
- S8MR-1103-A Knock-off wheel and hub kit, includes: 78 lbs.
4-Hubs
4-Nuts, quick-off
4-Wheels
required attaching hardware
- C8AX-9424-A 8V Induction kit, includes: 22 lbs.
1-8V manifold
2-Carburetors
Required lines, fittings & attaching hardware

STAMP

STAMP

