



FEDERATION INTERNATIONALE DE L'AUTOMOBILE

SHELBY AUTOMOTIVE - COBRA GT 350-351

MARQUE ET MODELE

4/69

VALIDITE HOMOLOGATION

613

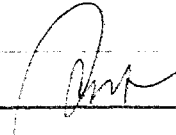
FICHE NR.

4 / 6000

GROUPE / CLASSE

EXTENSIONS	DEBUT VALIDITE	DESCRIPTION	NOTES

Autres homologations du modèle

Vérifiée le 26/10/95 par  visée ce jour le _____ par _____

6R III
613



Telephone: (203) 348-6233

Cable Address: "ACCUSFIA" Stamford, Conn.

AUTOMOBILE COMPETITION COMMITTEE FOR THE UNITED STATES, FIA, INC.
433 MAIN STREET, STAMFORD, CONN. 06901

Federation Internationale de l'Automobile

STANDARD CERTIFICATE OF PRODUCTION
In accordance with Appendix "J" of the International Sporting Code

Name of Manufacturer SHELBY AUTOMOTIVE CO., INC.
Make of Car Shelby Model 1969 Cobra GT-350 351

We certify that 500 cars identical with the basic specification, as well as 500 cars as modified by the listed optional equipment (when required by Appendix "J"), were completed as of December 31, 1968. Cars conforming to this specification may be identified by chassis numbers 9-02-480001, and engine numbers None.

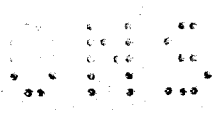
Signed:

R. A. Geddes
R. A. Geddes, Manager
Shelby Automotive Marketing

G. F. Merwin
G. F. Merwin - Shelby Automotive
Marketing

Certified:

John V. Oliveau
JOHN V. OLIVEAU
TECHNICAL DIRECTOR
ACCUS, FIA, INC.
ACCUS, FIA, Inc.



MAKE Shelby Automotive Co, INC. MODEL Cobra GT-350 351 FIA REC # 613 G III



Telephone: (203) 348-6233

Cable Address: "ACCUSFIA" Stamford, Conn.

AUTOMOBILE COMPETITION COMMITTEE FOR THE UNITED STATES, FIA, INC.

433 MAIN STREET, STAMFORD, CONN. 06901

Federation Internationale de l'Automobile
FORM OF RECOGNITION

In accordance with Appendix "J" of the International Sporting Code

I N D E X

<u>ITEM</u>	<u>NUMBERS</u>	<u>PAGES</u>
Basic Data & Photo		1
Photos		2-3
Sketches		4
Capacities & Dimensions	1-9	5
Chassis & Bodywork	20-32	6
Accessories & Upholstery	38-45	6
Wheels	50-54	6
Steering	70-82	6-7
Brakes	90-105	7
Engine	130-203	8-10
Carburetion	210-216	10
Injection	220-225	10
Engine Accessories	230-241	11
Engine & Car Performance	250-253	11
Drive Train	260-293	11-12
Optional Equipment		13-14
Variants & Evolutions, if any		

CONVERSION TABLE:

1 inch / pouce	2.54 cm	
1 foot / pied	30.479 cm	
1 square inch / pouce carre	6.452 cm ²	
1 cubic inch / pouce cube	16.387 cm ³	
1 pound (lb.) / livre	453.593 gr	
1 pint (U.S.)	.473 ltrs	.833 pt. Imp.
1 quart (U.S.)	.946 ltrs	.833 qt. Imp.
1 gallon (U.S.)	3.785 ltrs	.833 gal. Imp.
1 pint (Imp.)	.568 ltrs	1.20 pt. U.S.
1 quart (Imp.)	1.136 ltrs	1.20 qt. U.S.
1 gallon (Imp.)	4.546 ltrs	1.20 gal. U.S.



AUTOMOBILE COMPETITION COMMITTEE
FOR THE UNITED STATES, FIA, INC.

433 MAIN ST.
STAMFORD, CONN. 06901
(203) 348-6233

613 GT 350
351
G III

Federation Internationale de l'Automobile
FORM OF RECOGNITION

In accordance with Appendix "J" of the International Sporting Code

Cylinder capacity 5771.3 cm3 352.19 in3

Manufacturer Shelby Automotive Co. Model 1969 Cobra GT-350 351

Serial # Chassis 9 02 480001 Manufacturer Ford

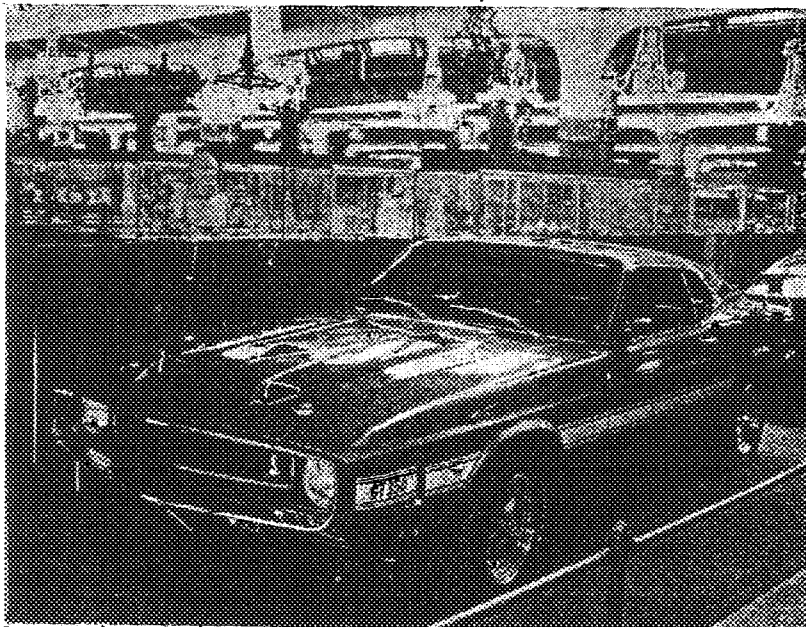
Serial # Engine none Manufacturer Ford

Recognition valid from _____ List _____

The manufacturing of the model described in this recognition form was started on Sept. 9, 1968 and the minimum production of 1,000 identical cars, in accordance with the specifications of this form, was reached on December 31, 1969.

- (*) need not be answered for Group II and III cars.
- (**) only need to be answered for Group IV cars.

A 3/4 Front View Car **



The vehicle described in this form has been subject to the following amendments:

Variants

on 19 rec # list

on 19 rec # list

on 19 rec # list

Normal evolution of the type

on 19 rec # list

on 19 rec # list

on 19 rec # list

Stamp/Signature of
National Sporting Authority

John V. Oliveau

JOHN V. OLIVEAU
TECHNICAL DIRECTOR
AGCUR, FCA, INEL



Stamp/Signature
F.I.A.

1. 4. 1969

MAKE Shelby

MODEL '69 Cobra GT-350

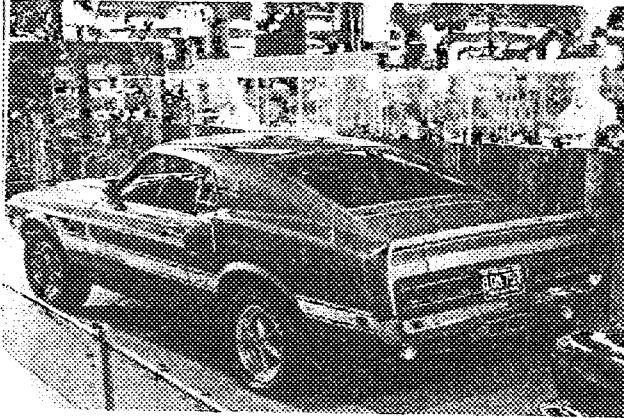
FIA REC # 613

GT-350

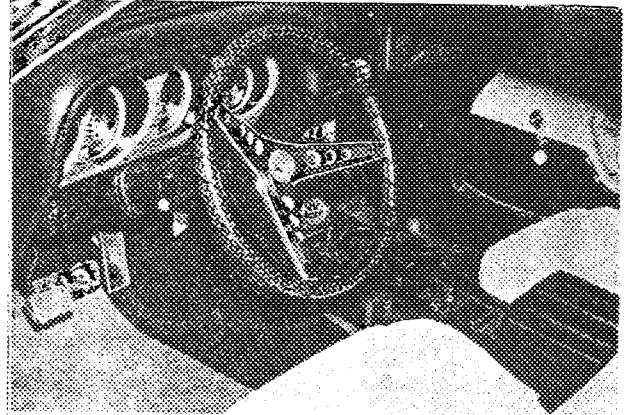
351

III

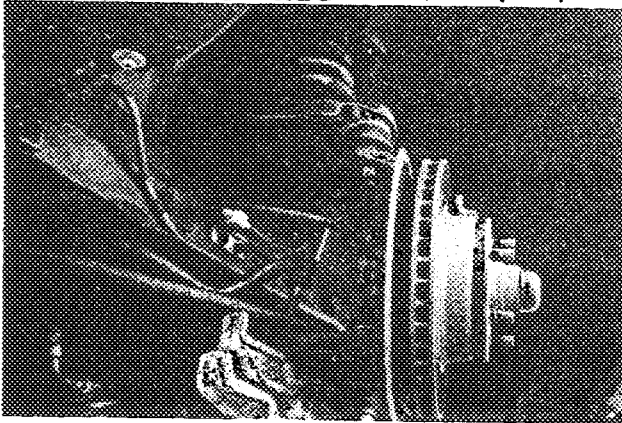
B 3/4 rear car (**)



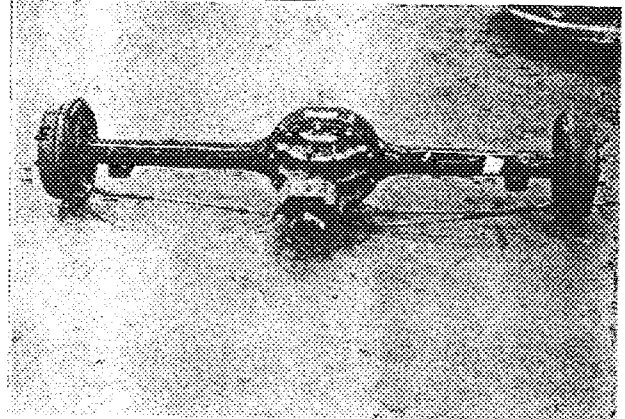
C interior-car (**)



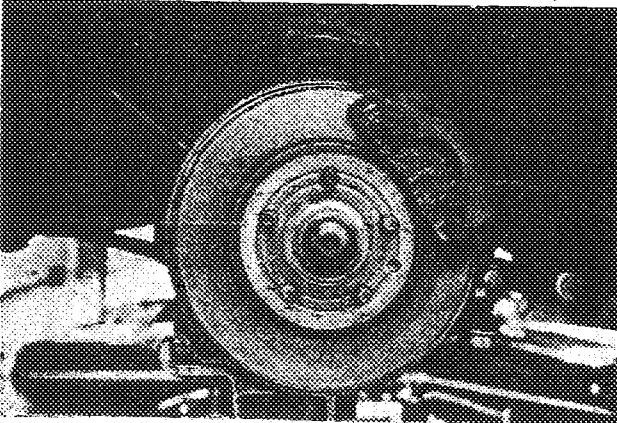
D front axle (**)



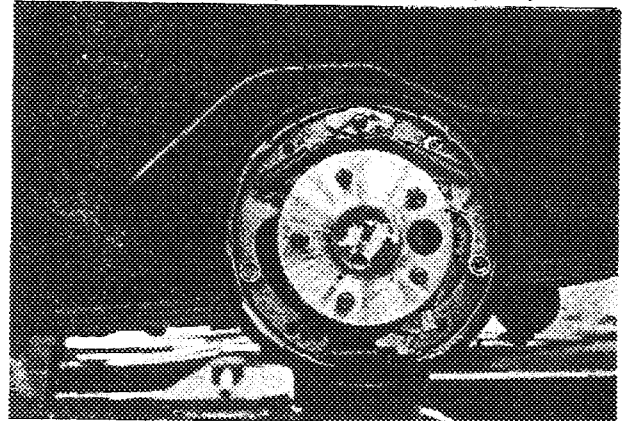
E rear axle (**)



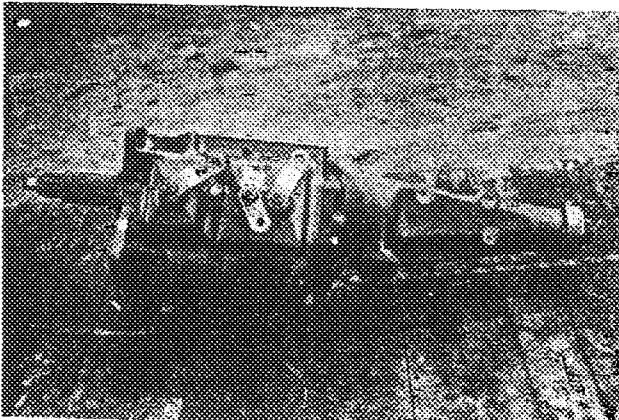
F brake, front (**)



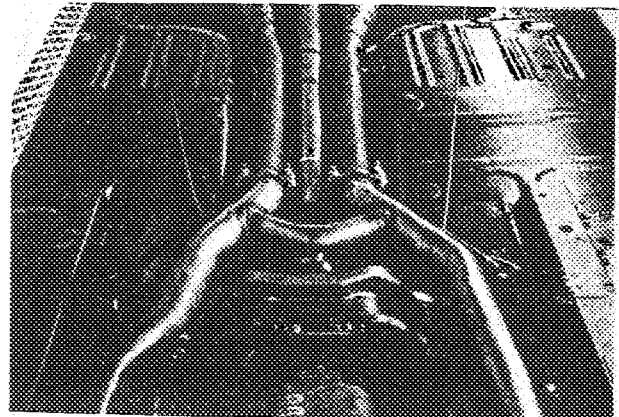
G brake, rear (**)



H gear box (**)



I exhaust system (*)

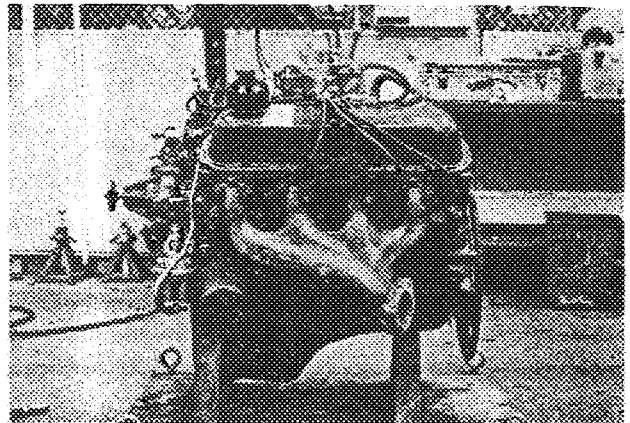
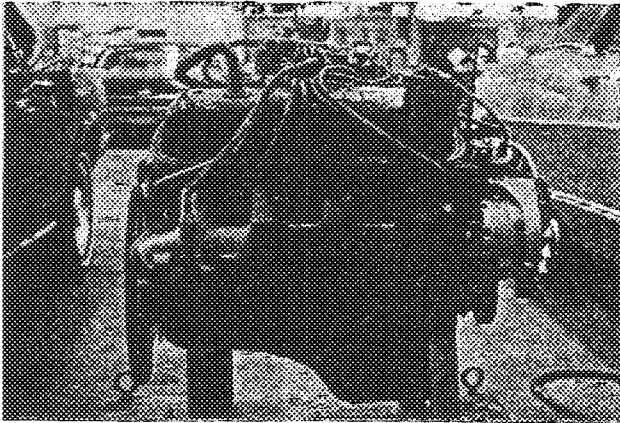


STAMP

STAMP

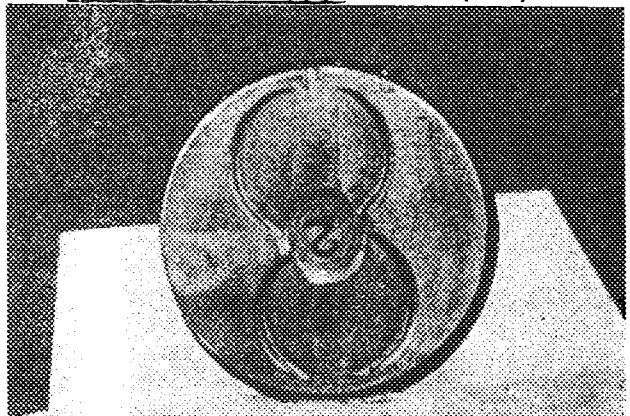
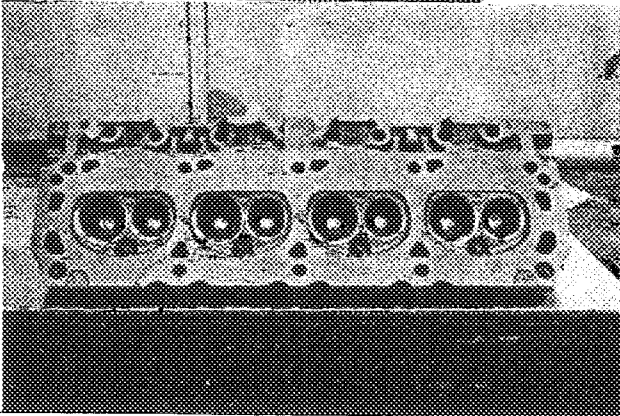
MAKE Shelby
J ENGINE RIGHT (**)

GT-350
MODEL 169 Cobra GT-350 FIA REC # 613 ³⁵¹ III
351 K ENGINE LEFT (**)



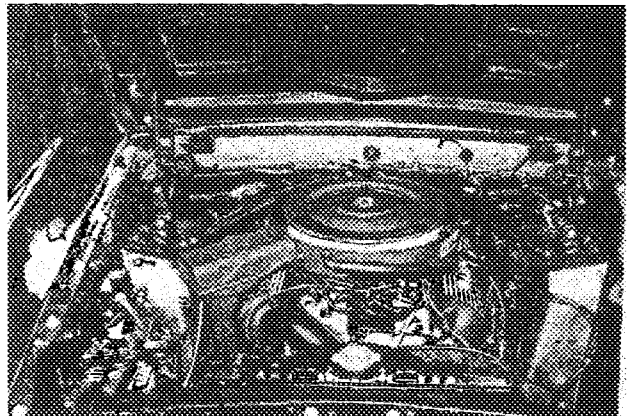
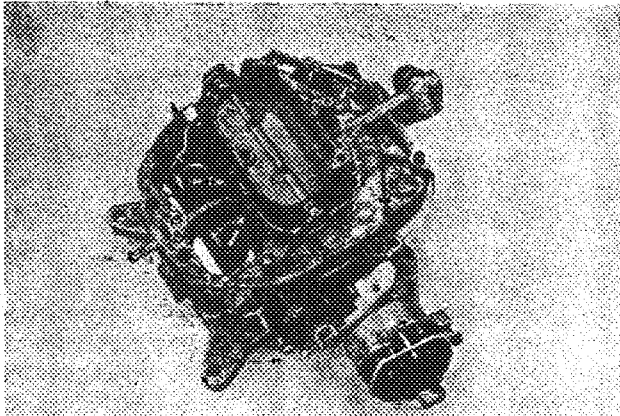
L COMBUSTION CHAMBER

M PISTON TOP (*)



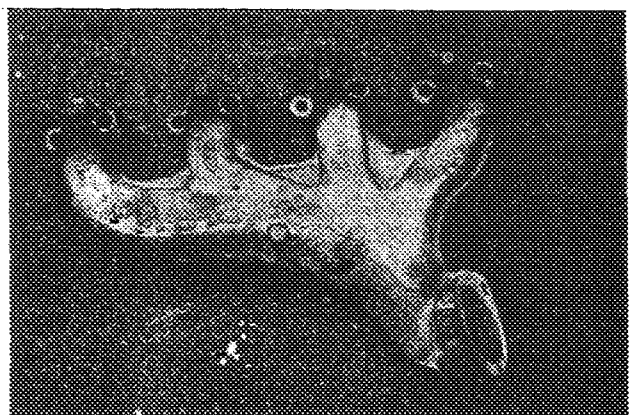
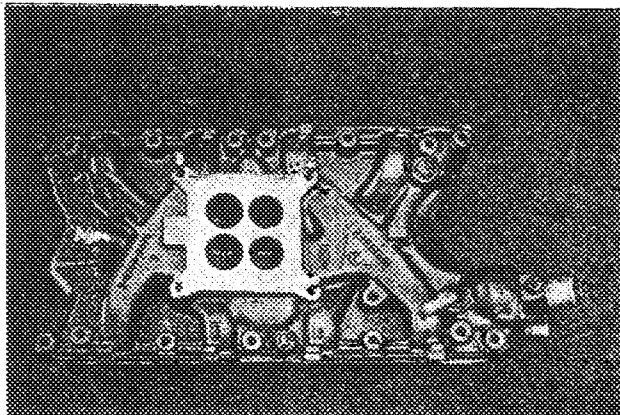
N CARBURETOR (*)

O ENGINE IN PLACE (**)



P MANIFOLD INLET

Q MANIFOLD EXHAUST



Strip out: ALL SKETCHES MUST INDICATE ACTUAL DIMENSIONS
AND MANUFACTURER'S TOLERANCES.

STAMP

STAMP

MAKE

SHELBY

MODEL '69 Cobra

FIA REC #

013

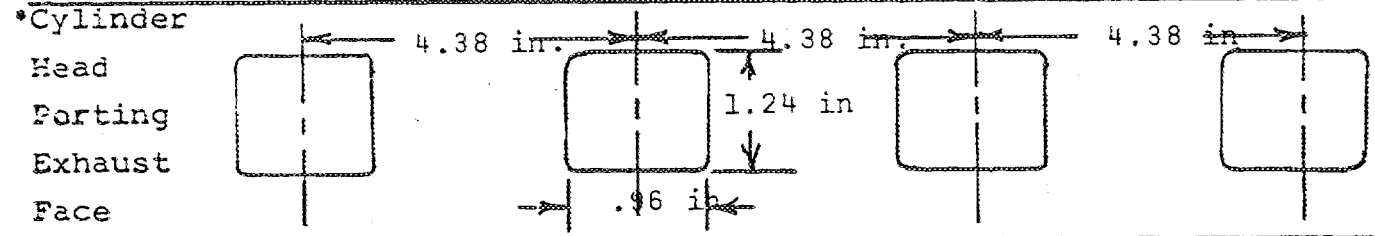
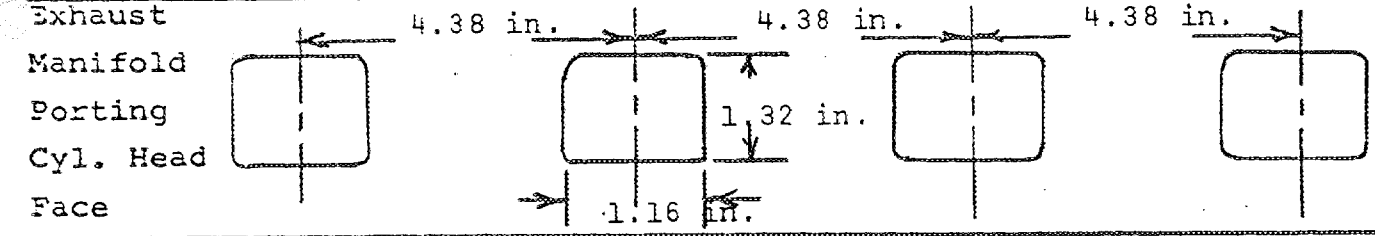
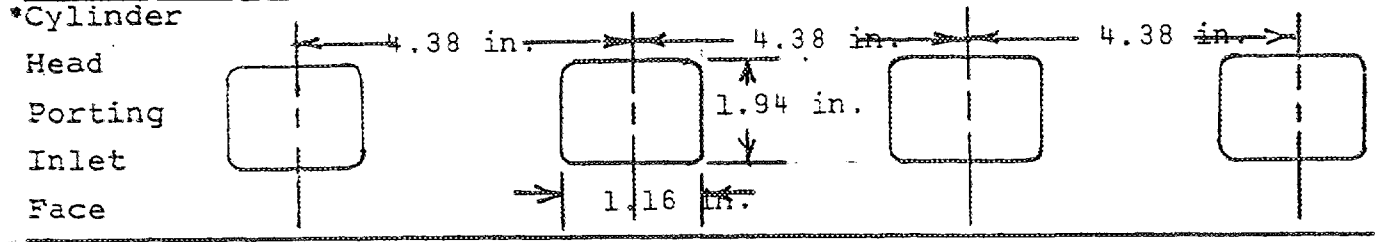
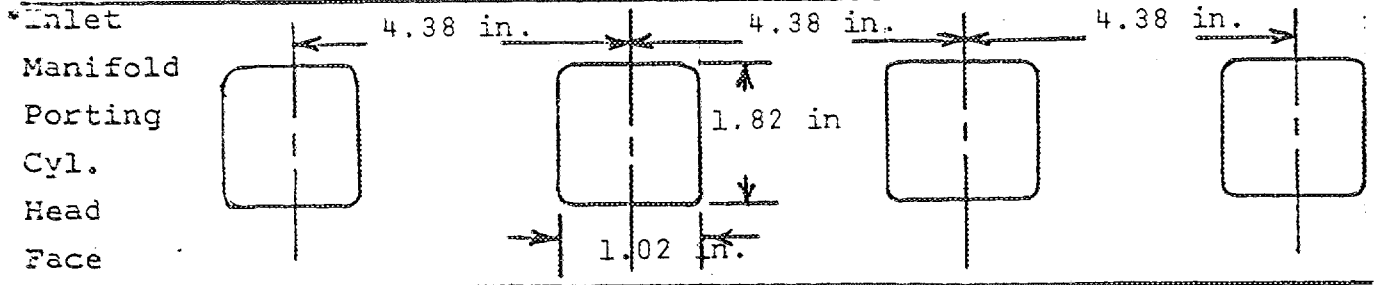
GT-350

351

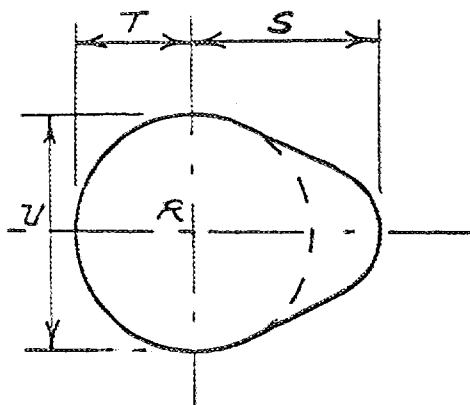
GT-350 351

G III

ALL SKETCHES MUST INDICATE ACTUAL DIMENSIONS AND MANUFACTURER'S TOLERANCES. +/- .04 in. or 1 mm



CAM



Inlet cam

S=	24.87	mm	.979	in
T=	18.31	mm	.721	in
U=	36.63	mm	1.442	in

Exhaust cam

S=	25.32	mm	.997	in
T=	18.31	mm	.721	in
U=	36.63	mm	1.442	in

STAMP

STAMP

MAKE Shelby MODEL 169 Cobra GT 350 FIA REC # 613 G III

IMPORTANT: Questions 1 through 9 must be answered in two measuring systems, one of which must be the metric system. See conversion table at index.

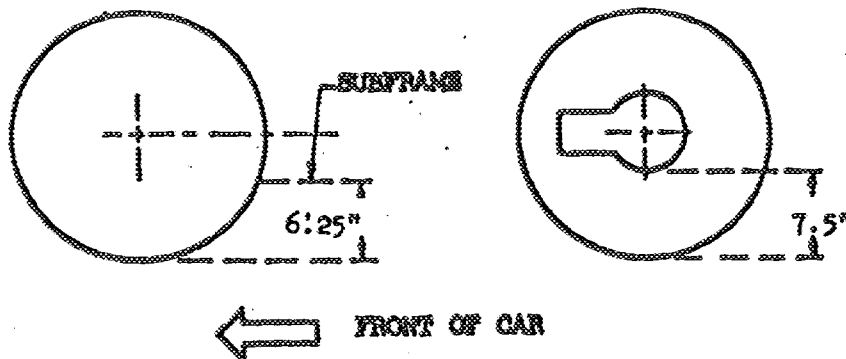
CAPACITIES & DIMENSIONS

- **) 1. Wheelbase 2743.2 mm 108.0 in
- **) 2. Front track 1539.2 mm 60.6 in + at 0° Camber
- **) 3. Rear track 1531.6 mm 60.3 in + 0° toe-in
+ Differences in track resulting from use of optional wheel and rim sizes must be stipulated on recognition application forms.

**See note below

Dimensional relationship between track (front and/or rear) and ground clearance resulting from use of optional wheel sizes shall also be stipulated and a sketch illustrating suspension reference points shall be shown below to establish the "reference chassis height." The reference chassis height dimension is to be used only when checking track and shall not affect eligibility of car in any manner.

Sketch, Ground Clearance: Dimensional Suspension & Chassis Reference Points"



**Note: Geometry Changes in front suspension will alter track

- 4. Overall length of car 4841.24 cm 190.6 in
- 5. Overall width of car 182.63 cm 71.9 in
- 6. Overall height of car 128.0 cm 50.6 in
- 7. Capacity of fuel tank (reserve included) 75.70/14.0 ltrs.
20/37 gallons US gallons, Imp.
- 8. Seating capacity four (4)
- (**) 9. Weight - total weight of car with normal equipment, water, oil and spare wheel but without fuel or repair tools. 1245.1 kg 2745 lbs

STAMP

STAMP



MAKE Shelby MODEL 169 Cobra GT-350 351 FIA REC # 613

CHASSIS & BODYWORK - Photos A, B, C

- (**) 20. Chassis/body construction - separate/unit construction
- (**) 21. Unit construction - material/s sheet steel
- (**) 22. Chassis - material/s steel separate construction
- (**) 23. Body - material/s steel/fiberglass separate construction
- (**) 24. Doors - number two (2) material/s steel
- (**) 25. Hood - material/s fiberglass
- (**) 26. Trunk Lid - material/s fiberglass
- 27. Window, Rear - material/s glass
- 28. Windshield - material/s glass
- 29. Windows, front door - material/s glass
- 30. Windows, rear door - material/s none
- 31. Windows - actuating system regulator
- 32. Window, rear quarter - material/s glass

ACCESSORIES AND UPHOLSTERY

- 38. Heating, interior - yes no optional
- 39. Air conditioning - yes no optional
- 40. Ventilation - yes no
- (*) 41. Seats, front - type of seat and upholstery Bucket/vinyl
- 42. Seats, front - weight
(complete with supports & rails out of car) 14.8 kg 32.5 lbs es.
- CHECK: BENCH BUCKET X CONSOLE INCLUDED
- 43. Seats, rear - type of seat and upholstery Bench/vinyl
- 44. Bumper, front - material/s steel kg 5.13 lbs 11.3 Weight
- 45. Bumper, rear - material/s steel kg 5.76 lbs 12.7 Weight

WHEELS

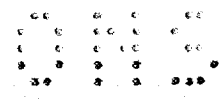
- 50. Type steel or magnesium
- 51. Weight (per wheel, without tire) 5.9kg 13 lbs
- 52. Method of attachment Stud and nut (5)
- 53. Rim, diameter 381 mm 15 in
- 54. Rim, width 178/203 mm 7/8 in

STEERING

- 60. Type recirculating ball and nut
- 61. Servo assistance optional
- 62. Number of turns of steering wheel from lock to lock 3.74/4.64
- 63. In case of servo assistance 3.74

STAMP

STAMP



MAKE Shelby MODEL 169 Cobra GT 350 351

SUSPENSION

- (**) 70. Suspension, front (photo D) - type Independent
- (**) 71. Spring - type coil
- (*) 72. Stabilizer - if fitted yes
- 73. Shock absorbers - number two (2)
- 74. Type tubular-adjustable
- (**) 78. Suspension, rear (photo E) - type Live axle
- (**) 79. Spring - type leaf
- (*) 80. Stabilizer - if fitted sway bar/traction bars
- 81. Shock absorbers - number two (2)
- 82. Type tubular adjustable

BRAKES (Photos E and F)

- (**) 90. Method of operation Hydraulic
- (*) 91. Power assisted (if fitted) - type Pedal boost
- 92. Master Cylinders - number and type one (1) dual
(indicate if duplex master cylinder) Front Rear
- 93. Cylinders - number per wheel one (1) one (1)
- 94. Cylinders - wheel bore 60.2 mm 2.375 in 2.22 mm .875 in
(indicate stepped bore dimensions if applicable)

Drum Brakes

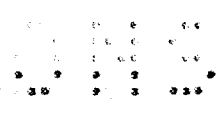
	<u>Front</u>	<u>Rear</u>
95. Diameter, inside	mm 125.4	mm 10.0 in
96. Linings, length	mm 195	mm 19.5 in
97. Linings, width	mm 44	mm 1.75 in
98. Shoes - number per brake		two (2)
99. Area, total - per brake	mm ² 22,017.5	mm ² 34.125 in ²

Disc Brakes

100. Diameter, outside	287 mm	11.3 in	mm	in
101. Thickness of disc	23.81 mm	.9375 in	mm	in
102. Lining - length	124.5 mm	4.9 in	mm	in
103. Lining - width	52.6 mm	2.07 in	mm	in
104. Pads - number per brake		two (2)		
105. Area, total - per brake	13,097.4 mm ²	20.1 in ²	mm ²	in ²

STAMP

STAMP



MAKE Shelby MODEL 69 Cobra GT-350 351 FIA REC # G III

ENGINE (Photos J and K)

- ** 130. Cycle two four Wankel
- ** 131. Cylinders - number eight (8)
- ** 132. Cylinders - arrangement Vee Wankel - # of elements and basic dimensions
- ** 133. Bore 101.65 mm 4.002 in
- ** 134. Stroke 88.90 mm 3.50 in
- ** 135. Cylinders - capacity 721.4 cm³ 44.0 in³
- ** 136. Cylinders, total capacity 5771.3 cm³ 352.19 in³
- ** 137. Cylinder Block - material/s cast iron
- ** 138. Sleeves - material/s (if fitted) none
- ** 139. Head, cylinder - material/s cast iron number fitted two (2)
- ** 140. Port, inlet - number eight (8)
- ** 141. Port, exhaust - number eight (8)
- * 142. Compression - ratio 10.6:1
- * 143. Combustion chamber - volume 58.9 cm³ 3.59 in³
- * 144. Piston - material/s Aluminum alloy with steel struts
- * 145. Rings - number three (3)
- * 146. Distance from gudgeon pin centre line to highest point of piston crown 44.17 mm 1.739 in
- (** 147. Crankshaft - cast-forged-mach from solid
- (** 148. Crankshaft - type - integral - sectioned - # of sections
- (** 149. Crankshaft, main bearings - number five (5)
- (** 150. Bearing cap - material/s cast iron
- 151. Lubrication - system - dry sump/oil in sump
- 152. Lubricant - capacity 4.73 ltrs pts 5 qts US
- (*) 153. Cooler, oil - yes no
- 154. Cooling - method water radiator
- 155. Cooling - capacity of system 14.76 ltrs pts 15.6 qts US

STAMP

STAMP



MAKE Shelby MODEL '69 Cobra GT-350 FIA REC # 351 G III

- (*) 156. Fan, cooling (if fitted) - diameter 44.6 cm 17.56 in
- (*) 157. Fan, cooling - number of blades four (4) material/s steel

BEARINGS

- (**) 158. Crankshaft, main - type insert diameter 76.19 mm 2.9998 in
- (**) 159. Connecting rod, big end - type insert diameter 58.69 mm 2.3107 in

WEIGHTS

- (*) 160. Flywheel (clean) 14.06 kg 31.0 lbs
- (*) 161. Flywheel with clutch (all rotating parts) 22.87 kg 50.83 lbs
- (*) 162. Crankshaft 25.4 kg 56.0 lbs
- 163. Connecting Rod .69 kg 1.53 lbs
- (*) 164. Piston with rings & pin .85 kg 1.87 lbs

FOUR CYCLE ENGINES

- (*) 170. Camshafts - number one (1) material/s Alloy Iron
- (**) 171. Camshaft - location cylinder block
- (**) 172. Camshaft Drive, type chain
- (**) 173. Valve operation - type tappet, pushrod, rocker

INLET (See Photo P) (for addtl info re 2 stroke engines and super charged, see page 15)

- 180. Inlet manifold - materials Aluminum Alloy
- 181. Valves (overall) - diameter 46.96 mm 1.849 in
- (*) 182. Valve lift - maximum 10.62 mm .418 in
- 183. Springs, valve - number two (2)
- 184. Spring - type coil
- (**) 185. Valves, per cylinder - number one (1)
- (*) 186. Tappet - clearance for checking timing (cold) mm in
- (*) 187. Valves - open at (with tolerance for tappet clearance indicated) Hydraulic 11° BTC
- (*) 188. Valves - close at (with tolerance for tappet clearance indicated) 65° ABC
- (*) 189. Air filter - type Dry element

STAMP

STAMP



MAKE Shelby

MODEL '69 Cobra GT 350 RIA REC #

GT 350
351 G III 6/3

351

EXHAUST (See Photo Q)

- 195. Manifold, exhaust - material/s cast iron
- 196. Valves (overall) - diameter 39.32 mm 1.548 in
- 197. Valve, lift - maximum 11.38 mm .448 in
- 198. Valve Springs/valve - number two (2)
- 199. Springs - type coil
- (**) 200. Valves - number per cylinder one (1)
- (*) 201. Tappet - clearance for checking timing (cold) Hydraulic
mm in
- (*) 202. Valves - open at (with tolerance for tappet 68° BBC
clearance indicated)
- (*) 203. Valves - close at (with tolerance for tappet 22° ATC
clearance indicated)

CARBURETION (See Photo N)

- 210. Carburetors, fitted - number one (1)
- 211. Type downflow
- (*) 212. Make Ford G.P.D.
- (*) 213. Model 4300
- 214. Carburetors - number of mixture passages four (4)
- (*) 215. Carburetor - flange hole diameter of exit port
36.50 mm 1.437 Prin
39.68 1.562 Sec.
- 216. Venturi - throat diameter+ 25.4 mm 1.0 in

INJECTION

- 220. Pump - make none fitted
- 221. Plungers - number
- (*) 222. Pump - model
- 223. Injectors - location
- 224. Injectors - total number
- (*) 225. Inlet pipe - minimum diameter mm in

+ For variable throat type carburetors, indicate minimum lift of shutter mechanism such as pistons in S.U.

STAMP

STAMP



MAKE Shelby MODEL 169 Cobra GT 350 FIA REC # 613
351

ENGINE ACCESSORIES

- (*) 230. Pump, fuel - mechanical and/or electrical
- 231. Number fitted one (1) each - two (2) total
- 232. Ignition system - type Battery and coil
- 233. Distributors - number one (1)
- 234. Coils, ignition - number one (1)
- 235. Spark plugs - number per cylinder one (1)
- 236. Generator (or Alternator) - number fitted one (1)
- 237. Drive - method Belt
- 238. Voltage, generator - volts 12.8
- 239. Battery - number one (1)
- 240. Location trunk
- 241. Voltage - volts 12 amp hrs 45

ENGINE & CAR PERFORMANCE as declared by mfr. in catalogue

- (*) 250. Horsepower - maximum engine output 295 at 4800 rpm S.A.E.
(indicate SAE or DIN)
- (*) 251. RPM - maximum 4800 output at that figure 295
- (*) 252. Torque - maximum 385 at 3200 rpm
- (*) 253. Speed - maximum km/hour miles/hour

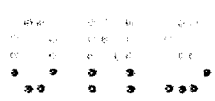
DRIVE TRAIN

Clutch

- 260. Type dry plate
- 261. Plates - number of driven one (1)
- 262. Plates - diameter 25.4 cm 10.0 in
- 263. Linings - diameter - inside 17.15 cm 6.75 in
- Linings - diameter - outside 25.4 cm 10.0 in
- 264. Method of operation mechanical

STAMP

STAMP



MAKE Shelby MODEL 169 Cobra GT 350 FIA REC # 613 351 G III
351

Gear Box (Photo H)

- (**) 270. Manual type - make Ford
- (**) 271. Ratios, forward - number Four (4)
- 272. Ratios, forward - number synchronized four (4)
- 273. Gear-Shift - location floor optional
- (**) 274. Automatic - make Ford type Hydraulic with planetary gears and torque converter
- (**) 275. Ratios, forward - number three (3)
- 276. Gear-Shift - location floor

277.	Manual		Automatic		Alternative manual/automatic			
	Ratio	# Teeth	Ratio	# Teeth	Ratio	# Teeth	Ratio	# Teeth
1	2.78	$\frac{23}{30} \frac{32}{15}$	2.46	Torque converter Max. ratio at a stall 2.02:	2.32	$\frac{23}{25} \frac{32}{15}$		
2	1.93	$\frac{23}{30} \frac{31}{21}$	1.46		1.69	$\frac{23}{25} \frac{28}{18}$		
3	1.36	$\frac{23}{30} \frac{25}{24}$	1.00		1.29	$\frac{23}{25} \frac{25}{21}$		
4	1.00	Direct			1.00	Direct		
5								
6								
reverse	2.78		2.20		2.32			

- 278. Overdrive - type none fitted
- 279. Forward gears on which overdrive can be selected
- 280. Overdrive - ratio

FINAL DRIVE

- (**) 290. Type hypoid, semi-floating, straddle mounted pinion
- (**) 291. Differential - type Locking-by ratchet or roller
- (**) 292. Limited Slip Differential (if fitted) - type Positive locking by ratchet or roller
- 293. Ratio $\frac{3.0}{39/13} \frac{3.10}{31/10} \frac{3.25}{39/12} \frac{3.40}{34/10} \frac{3.50}{35/10} \frac{3.70}{37/10} \frac{3.91}{43/11} \frac{4.11}{37/9} \frac{4.33}{39/9} \frac{4.57}{32/7}$ * see below

(/) Specify friction or positive locking type

STAMP

STAMP

*

$\frac{4.71}{33/7} \frac{4.86}{34/7} \frac{5.11}{36/7}$



IMPORTANT

The conformity of the car with the following items of the present recognition form is to be disregarded during the technical inspection when the vehicle has been entered in Group II (Touring Cars) or III (Grand Touring Cars):

41, 72, 80, 91, 142, 143, 144, 145, 146, 153, 156, 157, 160, 161, 162, 163, 164, 182, 186, 187, 188, 189, 201, 202, 203, 212, 213, 215, 216, 222, 225, 230, 250, 251, 252, 253, 255, photos I, M, N & items on page 5 as indicated.

During the technical inspection of cars entered in Group IV (Sports Cars) only the following items of the present recognition form are to be taken into consideration:

1, 2, 3, 9, 20, 21, 22, 23, 24, 25, 26, 70, 71, 78, 79, 90, 130, 131, 132, 133, 134, 135, 136, 137, 138, 139, 140, 141, 147, 148, 149, 150, 158, 159, 170, 171, 172, 173, 185, 200, 270, 271, 274, 275, 290, 291, 292 & photos A, B, D, E, F, G, H, J, K, O.

Optional equipment affecting preceding information:

CATALOGUE PART NUMBER MUST BE GIVEN

S7Ms-6675-B Sump Guard 17.4 lbs
----- Staggered shock absorber mounts - rear
S8MR-2025-A Rear Disc Brake kit, includes: 65 lbs
2-Brake rotors-ventilated
2-caliper assemblies-R.H.+L.H.
2-Brackets, caliper mounting-RH +LH
2- Hubs, with required bearing assemblies, lines, fittings and attaching parts
applicable dimensions
100. Diameter outside 11.3 in. 287 mm.
101. thickness of rotor .94in. 24.2 mm
102. Lining-Length 4.875 in. 123mm
103. Lining-width 1.81 in. 45.97 mm
104. Pads-no.per brake two (2)
105. Area-total per brake 17.65 in 2 12,214 mm 2
Alternate Wheel-8" front track- 61.1
rear track - 60.0

STAMP

STAMP

MAKE SHELBY

MODEL # 69 Cobra
351 GT-350

FIA REC # 613

GT 350
351
G III

Optional Equipment - CATALOGUE PART NUMBER MUST BE GIVEN

277 (con't)	Ratio	MANUAL Teeth	Ratio	MANUAL Teeth
1.	2.36	$\frac{26}{29} \frac{36}{17}$	2.20	$\frac{27}{28} \frac{36}{17}$
2.	1.62	$\frac{26}{29} \frac{29}{20}$	1.42	$\frac{27}{28} \frac{26}{19}$
3.	1.20	$\frac{26}{29} \frac{27}{25}$	1.19	$\frac{27}{28} \frac{24}{21}$
4.	1.00	Direct	1.00	Direct

S8MR-2025-B Front disc brake fit-Four piston, includes: 21 Lbs.
2- Caliper assemblies-R.H. + L.H. (Piston Bore-1.625"-41.3mm)
2- Brackets, caliper mounting-R.H.+L.H., lines, fittings + attaching parts.

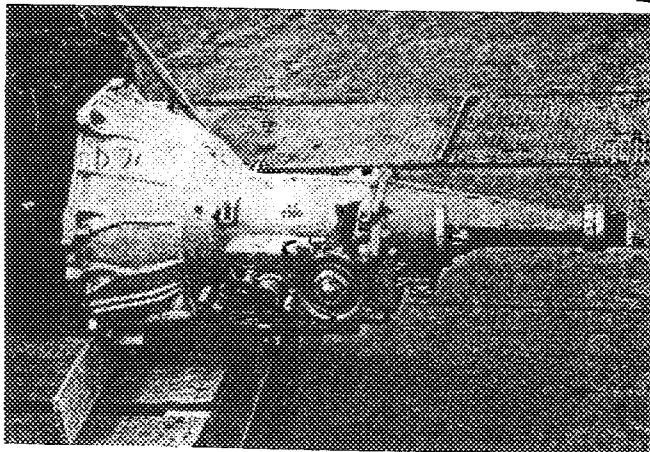
S8MR-2025-C Front disc brake kit-includes: 75 Lbs.
2-Brake rotors-ventilated
2-caliper assemblies-R.H. + L.H.
2-Brackets, Caliper mounting-RH + LH
2-Hubs, with required bearing assemblies, lines, fittings + attaching parts

Applicable dimensions:

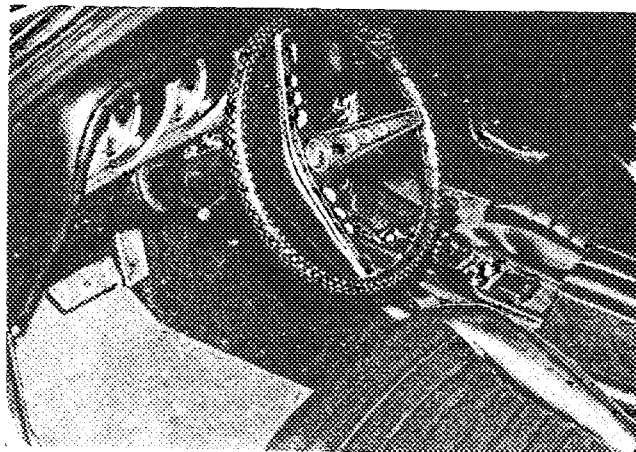
- 100. Diameter, outside 11.96 in. 303.8 mm
- 101. Thickness of rotor 1.25 in. 31.8 mm
- 102. Lining length 5.36 in. 136.1 mm
- 103. Lining width 1.90 in. 48.3 mm
- 104. Pads-No. per Brake Two (2)
- 105. Area, total per brake 20.36 in 2 13,147.3 mm 2

K9MR-5790-A Watts linkage-Rear Axle
7379020 Deletion option-Deletes all sealers, sound deadeners & outside trim.

S1MR-61615-A Bucket seat assembly, driver and passenger-12 pounds each.



STAMP



STAMP

Automatic Transmission Photo H,

Interior with Automatic Transmission

MAKE SHELBY

MODEL '69 Cobra GT-350 351

FIA REC# 613

GT350
351
GIII

- S7MR-6650-B Differential Cooler Kit, includes:
1-Radiator, Oil
1-Duct, Air and flange assembly
1-Plenum box
2-Pump, oil circulating
1-Bracket, Pump mount
required lines, fittings & attaching hardware
- S8MR-7009-A Transmission Cooler Kit, includes:
1-Radiator, oil
1-Duct, Air and flange assembly
1-Plenum box
1-Pump, oil circulating
required lines, fittings, and attaching hardware
- S9MR-10849-A High Performance Instrument Cluster, includes:
1-Panel, instrument
1-Tachometer
1-Oil pressure gauge
1-Temperature gauge
1-Water temperature gauge
1-Fuel pressure gauge
1-Speedometer
- S8MR-1103-A Knock off wheel and hub kit, includes: 78 lbs.
4-Hubs
4-Nuts, Quick-off
4-Wheels
required attaching hardware
- GFMK-18127-A Traction Bar Kit

STAMP

STAMP

(15)

