



JAPAN AUTOMOBILE FEDERATION

F. I. A. Recognition No.

Group

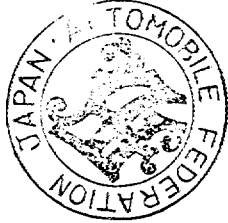
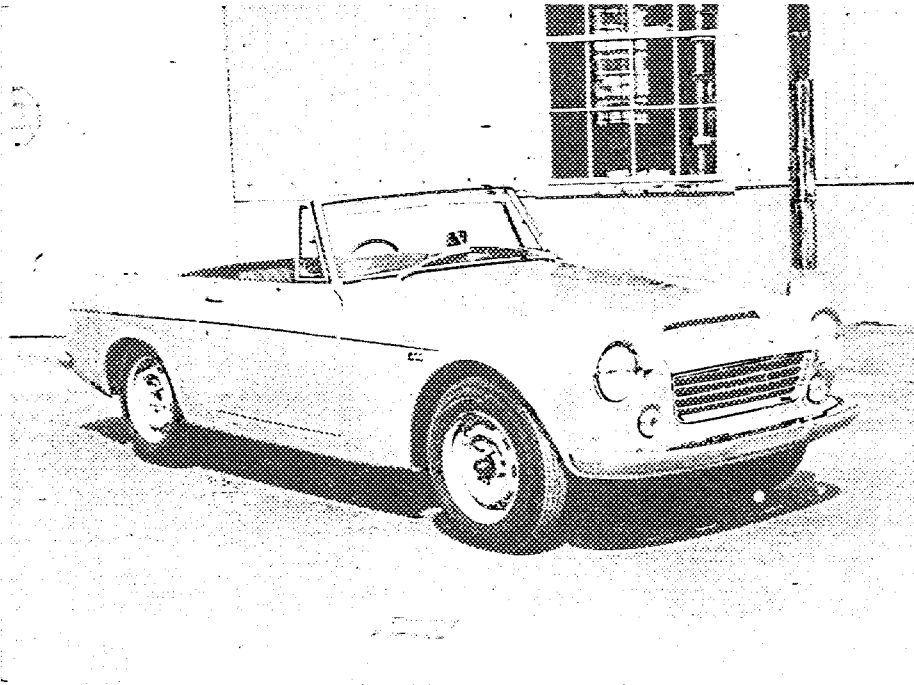
567.
Grand Touring

FEDERATION INTERNATIONALE DE L'AUTOMOBILE

Form of recognition in accordance with
Appendix 5 to the International Sporting Code.

Manufacturer NISSAN MOTOR CO., LTD. Cylinder-capacity 2,595 cm³ 97.33 cu in
 Serial No. of chassis 02301 Model SP(L)311
 Serial No. of engine R-11026 Manufacturer NISSAN
 Manufacturer NISSAN
 Recognition is valid from 1st July 1967 list 16/4
 The manufacturing of the model described on this recognition form was started on JAN 1967 and the minimum production of identical cars in accordance with the specifications of this form was reached on MAR 1967

Photograph A, 3/4 view of car from front



東京都港区芝公園第三号地一番五
機械振興会館内
社団法人
日本自動車連盟

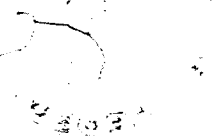
The vehicle described in this form has been subject to the following amendments:

Variants				Normal evolution of the type			
on	19	rec. No.	list	on	19	rec. No.	list
on	19	rec. No.	list	on	19	rec. No.	list
on	19	rec. No.	list	on	19	rec. No.	list
on	19	rec. No.	list	on	19	rec. No.	list
on	19	rec. No.	list	on	19	rec. No.	list

Place and signature of the
National Sporting Authority

Stamp and signature of the F. I. A.

[Handwritten signature]



Make

NISSAN

Model:

SP(L)311

F. I. A. Rec. No.

IMPORTANT - the underlined items must be stated in two measuring systems, one of which must be the metric system. See conversion table hereafter.

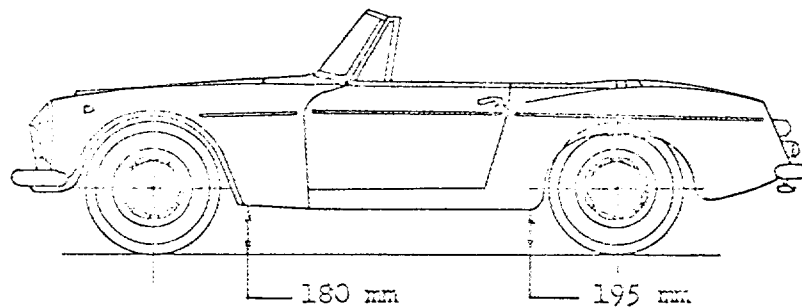
CAPACITIES AND DIMENSIONS

1. <u>Wheelbase</u>	2,280	mm	89.7	inches
2. <u>Front track</u>	1,275	mm	50.3	inches *
3. <u>Rear track</u>	1,200	mm	47.3	inches *
4. Overall length of the car		391.0	cm	inches
5. Overall width of the car		149.5	cm	inches
6. Overall height of the car		130.0	cm	inches
7. <u>Capacity of fuel tank</u> (reserve included)			43	liters
	11.4	Gallon US		Gallon imp.
8. Seating capacity	2			
9. <u>Weight</u> , total weight of the car with normal equipment, water, oil and spare wheel but without fuel nor repair tools:				
	870	kg	1,918	lbs
				cwt

* Differences in track caused by the use of other wheels with different rim widths must be stated when recognition is requested for the wheels concerned.

Specify ground clearance in relation to the track and give drawing of two fixed points of the vehicle's structure at which measurements are taken.

These ground clearance dimensions are only for information when checking the track and can in no way affect the eligibility of the car.



CONVERSION TABLE

1 inch / pouce	2.54 cm	1 quart US	0.9464 liters
1 foot / pied	30.4794 cm	1 pint (pt)	0.568 liters
1 square inch / pouce carré	6.452 cm ²	1 gallon imp.	4.546 liters
1 cubic inch / pouce cube	16.387 cm ³	1 gallon US	3.785 liters
1 pound / livre (lb)	453.593 gr.	1 hundred weight (cwt)	50.302 kg

Make

NISSAN

Model

SP(D)311

CHASSIS AND COACHWORK (Photographs A, B and C)

- 20. Chassis/body construction : separate /~~UNIMOUNTED~~
- 21. Unitary construction, material (s)
Separate construction
- 22. Separate Constructions: Material (s) of chassis Steel
- 23. Material (s) of coachwork Steel
- 24. Number of doors 2 Material (s) Steel
- 25. Material (s) of bonnet Steel
- 26. Material (s) of boot lid Steel
- 27. Material (s) of rear-window
- 28. Material (s) of windscreen Glass
- 29. Material (s) of front-door windows Glass
- 30. Material (s) of rear-door windows
- 31. Sliding system of door windows Vertical manual
- 32. Material (s) of rear-quarter light

ACCESSORIES AND UPHOLSTERY

- 38. Interior heating : ~~XXX~~ - no
- 39. Air-conditioning : ~~XXX~~ - no
- 40. Ventilation : yes - ~~XX~~
- 41. Front seats, type of seats and upholstery
- 42. Weight of front seat (s), complete with supports and rails, out of the car :
10 x 2 kg lbs
- 43. Rear seats, type of seats and upholstery
- 44. Front bumper, material (s) Steel Weight 2.9 kg lbs
- 45. Rear bumper, material (s) Steel Weight 2.8 kg lbs

WHEELS

- 50. Type Pressed steel
- 51. Weight (per wheel, without tyre) 8 kg lbs
- 52. Method of attachment Wheel nut (4 nuts)
- 53. Rim diameter 355 mm 14 inches
- 54. Rim width 114 mm 4.5 inches
127 mm 5.0 inches

STEERING

- 60. Type Cam and Lever
- 61. Servo-assistance : ~~XXX~~ - no
- 62. Number of turns of steering wheel from lock to lock 2.5
- 63. In case of servo-assistance



Make

NISSAN

Model

SP(L)311

F.I.A. Rec. No.

SUSPENSION

- 70. Front suspension (photogr. D), type Independent by coil spring and wishbone
- 71. Type of spring Coil
- 72. Stabiliser (if fitted)
- 73. Number of shockabsorbers 2
- 74. Type Hydraulic telescopic
- 78. Rear suspension (photogr. E), type Rigid axle case and semi elliptical leaf spring
- 79. Type of spring Leaf
- 80. Stabiliser (if fitted)
- 81. Number of shockabsorbers 2
- 82. Type Hydraulic telescopic

BRAXES (photographs F and G)

- 90. System Hydraulic
- 91. Servo-assistance (if fitted), type
- 92. Number of hydraulic master cylinders 1

	FRONT		REAR	
93. Number of cylinders per wheel	2		1	
94. Bore of wheel cylinder (s)	54.0 mm	in.	19.1 mm	in.
Drum brakes				
95. Inside diameter	mm	in.	229 mm	in.
96. Length of brake linings	mm	in.	219 mm	in.
97. Width of brake linings	mm	in.	40 mm	in.
98. Number of shoes per brake			2	
99. Total area per brake	mm ²	sq. in.	17,550 mm ²	sq. in.
Disc brakes				
100. Outside diameter	284 mm	in.	mm	in.
101. Thickness of disc	10.5 mm	in.	mm	in.
102. Length of brake linings	54.0 mm	in.	mm	in.
103. Width of brake linings	47.5 mm	in.	mm	in.
104. Number of pads per brake	2			
105. Total area per brake	5,130 mm ²	sq. in.	mm ²	sq. in.



Make NISSAN Model SP(L)311 F. I. A. Rec. No.

ENGINE (photographs J and K)

130. Cycle	4	131. Number of cylinders	4		
132. Cylinder arrangement	In line				
133. Bore	87.2 mm	3.43 in.	134. Stroke	66.8 mm	2.63 in.
135. Capacity per cylinder		398.9 cm ³		24.34 cu. in.	
136. Total cylinder-capacity		1,595 cm ³		97.33 cu. in.	
137. Material (s) of cylinder block	Cast iron				
138. Material (s) of sleeves (if fitted)					
139. Cylinder-head, material (s)	Al-cast		Number fitted	1	
140. Number of inlet ports	4	141. Number of exhaust ports	4		
142. Compression ratio					
143. Volume of one combustion chamber		cm ³		cu. in.	
144. Piston, material	145. Number of rings				
146. Distance from gudgeon pin centre line to highest point of piston crown	mm	inches			
147. Crankshaft : xxxxxx / stamped	148. Type of crankshaft : integral / xxxxxx				
149. Number of crankshaft main bearings	5				
150. Material of bearing cap	Cast iron				
151. System of lubrication : xxxxxx / oil in sump					
152. Capacity, lubricant	3.3 ltrs	pis		quarts US	
153. Oil cooler : yes / no	154. Method of engine cooling				
155. Capacity of cooling system	8 ltrs	pints	Water	quarts US	
156. Cooling fan (if fitted), dia.	cm	inches			
157. Number of blades of cooling fan					

Bearings

158. Crankshaft main, type	Plain	Dia.	63 mm	in.
159. Connecting rod big end,	Plain	Dia.	52 mm	in.

Weights

160. Flywheel (clean)	kg	lbs		
161. Flywheel with clutch (all turning parts)			kg	lbs
162. Crankshaft	kg	lbs	163. Connecting rod	kg
164. Piston with rings and pin		kg	lbs	



Make

NISSAN

Model

SP(L)311

F.I.A. Rec. No.

FOUR STROKE ENGINES

170. Number of camshafts 1 171. Location Cylinder block
 172. Type of camshaft drive Chain
 173. Type of valve operation Push rod

INLET (see page 4) *

180. Material(s) of inlet manifold Al-cast
 181. Diameter of valves 42 mm 1.65 inches
 182. Max. valve lift mm
 183. Number of valve springs 2
 184. Type of spring
 185. Number of valves per cylinder 1
 186. Tappet clearance for checking timing (cold) mm inches
 187. Valves open at (with tolerance for tappet clearance indicated)
 188. Valves close at (with tolerance for tappet clearance indicated)
 189. Air filter, type

EXHAUST (see page 4)

195. Material (s) of exhaust manifold Steel
 196. Diameter of valves 32 mm 1.26 inches
 197. Max. valve lift mm in.
 198. Number of valve springs 2
 199. Type of spring
 200. Number of valves per cylinder 1
 201. Tappet clearance for checking timing (cold) mm inches
 202. Valves open at (with tolerance for tappet clearance indicated)
 203. Valves close at (with tolerance for tappet clearance indicated)

CARBURETION (photograph N)

210. Number of carburetors fitted 2 211. Type
 212. Make 213. Model
 214. Number of mixture passages per carburetor 1
 215. Flange hole diameter of exit port(s) of carburetor mm in.
 216. Minimum dimensions of mixture passage(s) with piston at max. height (example: SU)
 mm inches

INJECTION (if fitted)

220. Make of pump 221. Number of plungers
 222. Model or type of pump 223. Total number of injectors
 224. Location of injectors
 225. Minimum diameter of inlet pipe mm inches

* for additional information concerning two-stroke engines and super-charged engines see page 13.



Make NISSAN

Model SP(L)311

F. I. A. Rec. No.

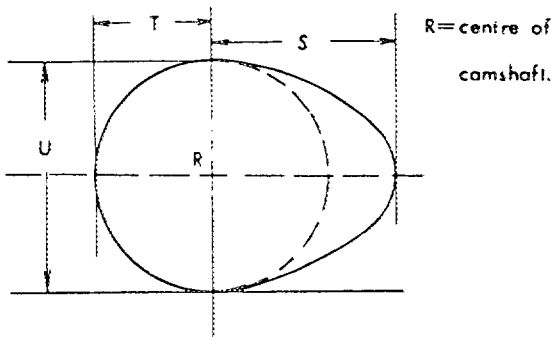
ENGINE ACCESSORIES

- 230. Fuel pump : mechanical and / or electric
- 231. No. fitted 1
- 232. Type of ignition system **Make and break ignition**
- 233. No. of distributors 1
- 234. No. of ignition coils 1
- 235. No. of spark plugs per cylinder 1
- 236. Generator, type: dynamo/alternator-number fitted
- 237. Method of drive **V-belt**
- 238. Voltage of generator 12 volts
- 239. Battery, number 1
- 240. Location **Engine room**
- 241. Voltage of battery 12 volts

ENGINE AND CAR PERFORMANCES (as declared by manufacturer in catalogue)

- 250. Max. engine output (type of horsepower:) at rpm
- 251. Maximum rpm output at that figure
- 252. Maximum torque at rpm
- 253. Maximum speed of the car km/hour miles / hour

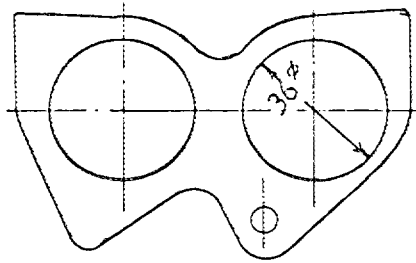
255.



- Inlet cam
- S = mm inches
 - T = mm inches
 - U = mm inches
- Exhaust cam
- S = mm inches
 - T = mm inches
 - U = mm inches

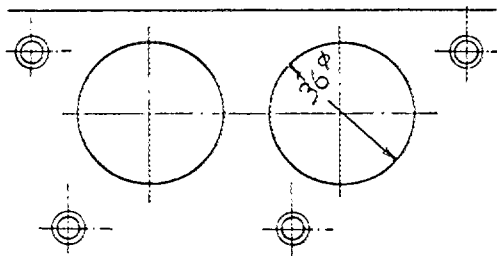


Drawing inlet manifold ports, side of cylinder-head. Indicate scale or dimensions and manufacturing tolerance.

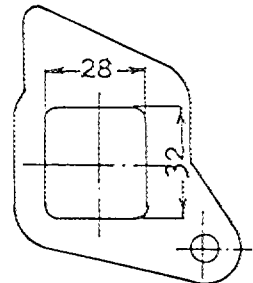
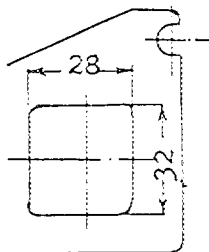


Dimension; mm
Tolerance; ± 1.5

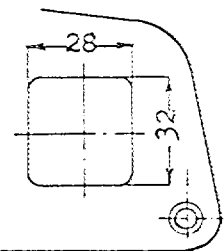
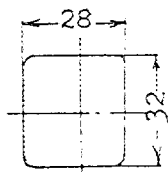
Drawing of entrance to inlet port of cylinder-head. Indicate scale or dimensions and manufacturing tolerance.



Drawing exhaust manifold ports, side of cylinder-head. Indicate scale or dimensions and manufacturing tolerance.



Drawing of exit to exhaust port of cylinderhead. Indicate scale or dimensions and manufacturing tolerance.



Make

NISSAN

Model

SR(L)311

F.I.W. No.

DRIVE TRAIN

CLUTCH

- 260. Type of clutch Dry single plate 261. No. of plates 2
- 262. Dia. of clutch plates 20.2 cm inches
- 263. Dia. of linings, inside 13 cm in. outside 20 cm in.
- 264. Method of operating clutch Hydraulic

GEAR BOX (photograph H)

- 270. Manual type, make NISSAN Method of operation Mechanical
- 271. No. of gear-box ratios forward 4 272. Synchronized forward ratios 1, 2, 3, 4
- 273. Location of gear-shift Floor
- 274. Automatic, make type
- 275. No. of forward ratios 276. Location of gear-shift

277.	Manual			Automatic			Alternative manual			OVERDRIVE				
	Ratio	No.	teeth	Ratio	No.	teeth	Ratio	No.	teeth	Ratio	No.	teeth		
1	3.382	$\frac{31}{22}$	$\times \frac{36}{15}$				2.678	$\frac{28}{23}$	$\times \frac{33}{15}$	1.858	$\frac{28}{23}$	$\times \frac{29}{19}$		
2	2.013	$\frac{31}{22}$	$\times \frac{30}{21}$				1.704	$\frac{28}{23}$	$\times \frac{28}{20}$	1.383	$\frac{28}{23}$	$\times \frac{25}{21}$		
3	1.312	$\frac{31}{22}$	$\times \frac{27}{29}$				1.262	$\frac{28}{23}$	$\times \frac{28}{27}$	1.217	$\frac{28}{23}$	$\times \frac{27}{27}$		
4	1.000						1.000			1.000				
5							0.852	$\frac{28}{23}$	$\times \frac{21}{30}$	0.852	$\frac{28}{23}$	$\times \frac{21}{30}$		
6														
reverse	3.364	$\frac{31}{22}$	$\times \frac{19}{21}$	$\times \frac{39}{14}$			2.922	$\frac{28}{23}$	$\times \frac{17}{15}$	$\times \frac{36}{17}$	2.922	$\frac{28}{23}$	$\times \frac{17}{15}$	$\times \frac{36}{17}$

- 278. Overdrive, type
- 279. Forward gears on which overdrive can be selected
- 280. Overdrive ratio

FINAL DRIVE

- 290. Type of final drive Hypoid gear
- 291. Type of differential Bevel gear
- 292. Type of limited slip differential if fitted.
- 293. Final drive ratio 3.859 4.111 4.375 4.625 4.875 5.225
- Number of teeth 39/9 37/9 35/8 37/8 39/8 41/8



Make

NISSAN

Model

SP(L)311

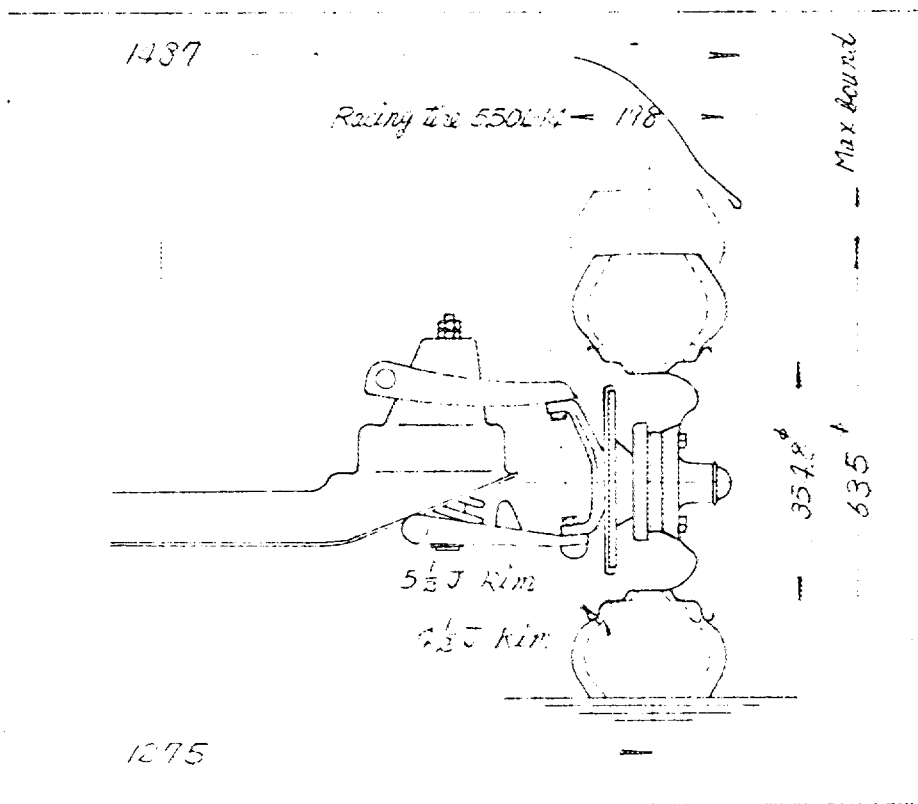
F.I.A. Rec. No.

IMPORTANT- The conformity of the car with the following items of the present recognition form is to be disregarded during the scrutineering, when the vehicle has been entered in group 2 (Touring cars) or 3 (Grand Touring cars) : 41, 72, 80, 91, 142, 143, 144, 145, 146, 153, 156, 157, 160, 161, 162, 163, 164, 182, 184, 186, 187, 188, 189, 199, 201, 202, 203, 212, 213, 215, 216, 222, 225, 230, 250, 251, 252, 253, and photographs I, M and N.

During the scrutineering of cars entered in group 4 (Sportscars) only the following items of the present recognition form are to be taken into consideration : 1, 2, 3, 9, 20, 21, 22, 23, 24, 25, 26, 70, 71, 78, 79, 90, 130, 131, 132, 133, 134, 135, 136, 137, 138, 139, 140, 141, 147, 148, 149, 150, 158, 159, 170, 171, 172, 173, 185, 200, 270, 271, 274, 275, 290, 291, 292 and photographs A, B, D, E, F, G, H, J, K, and O.

Optional equipment affecting preceding information. This to be stated together with reference number.

7) Capacity of fuel tank	60 ltrs	15.9 gallon US
50) Type	Pressed steel	Mg-cast
51) Weight	8.4 kg	5.7 kg
2) Method of attachment	Wheel nut (4 nuts)	Wheel nut (4 nuts)
53) Rim diameter	355 mm 14 inch	355 mm 14 inch
54) Rim width	140 mm 5.5 inch	140 mm 5.5 inch



292) Type of limited slip differential

Friction



Make

NISSAN

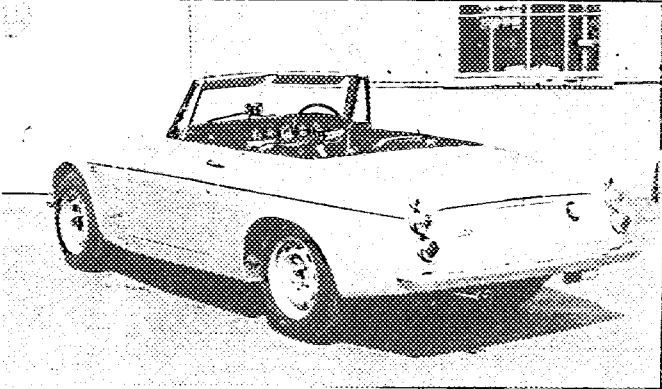
Model

SP(L)311

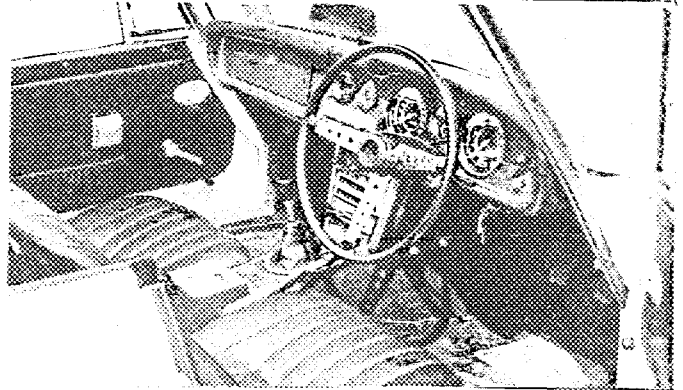
F.I.A. Rec. No

Photograph

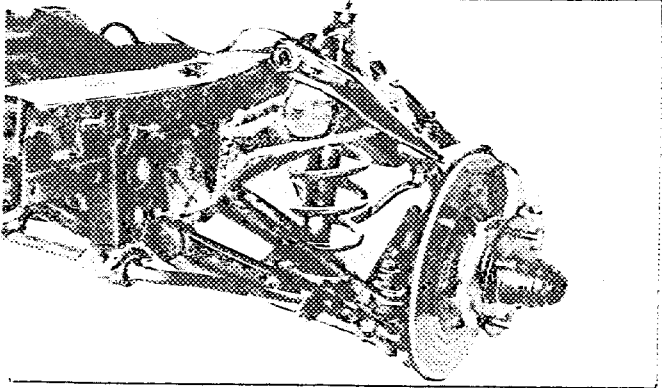
B, 3/4 view of car from rear



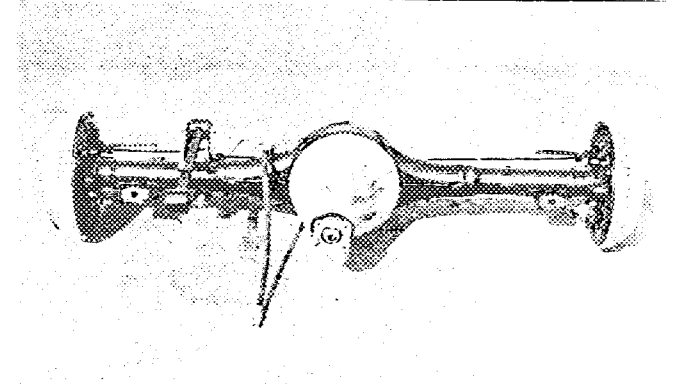
C, interior view of car through driver's door (open or removed) with dashboard



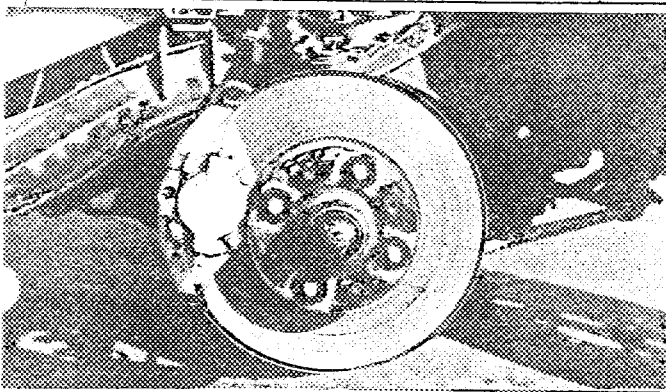
D, front axle complete, removed from car. Without wheels.



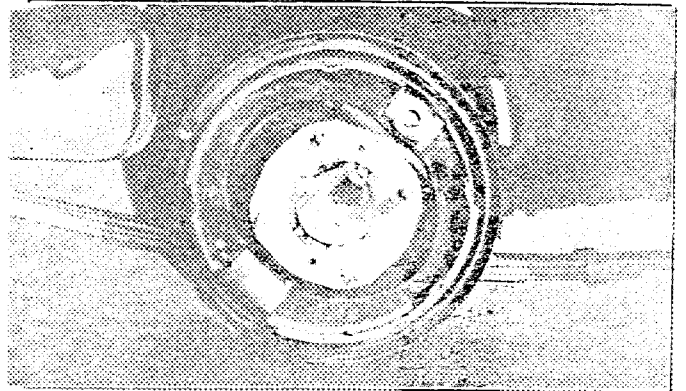
E, Rear axle complete without wheels, removed from car.



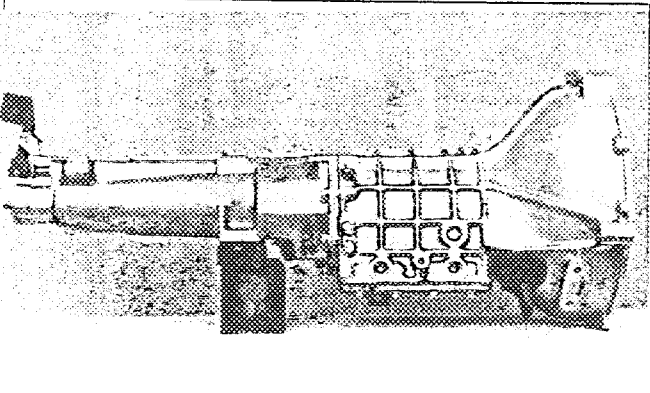
F, front brake, drum removed or disc with calipers



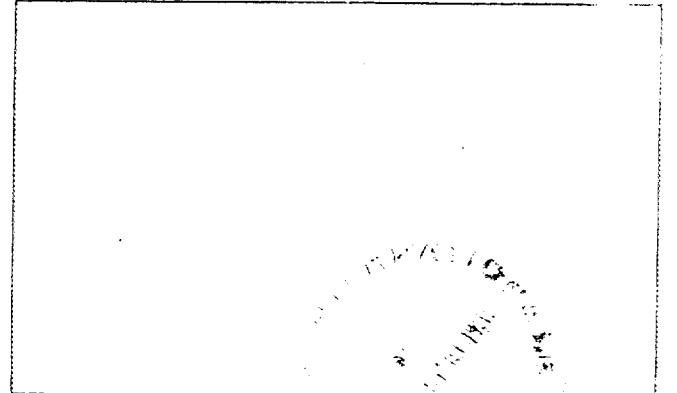
G, rear brake, drum removed or disc with calipers



H, gear-box, view from side



I, silencer + exhaust pipes after exhaust manifold.



NISSAN SP(L)311

Make

NISSAN

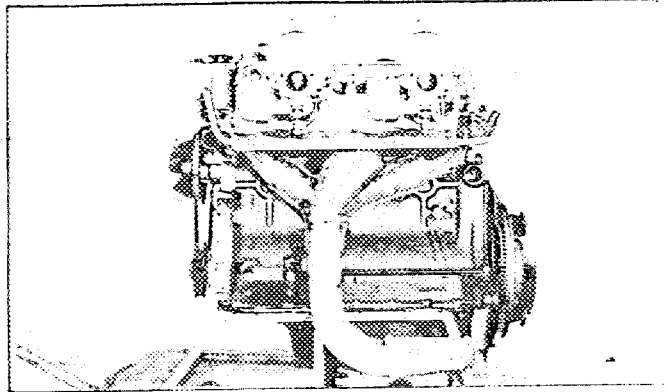
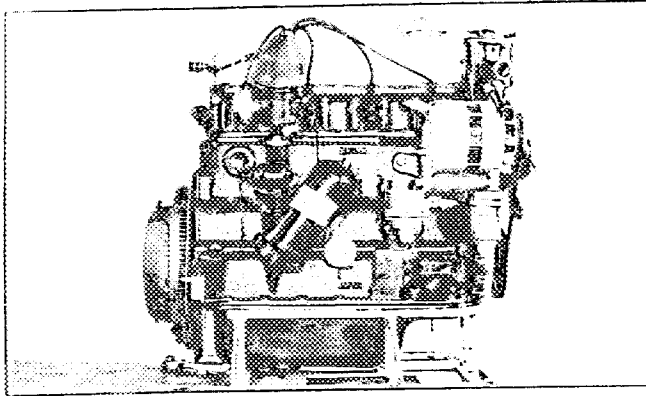
Model SP(L)311

F. I. A. Rec. No

Photograph

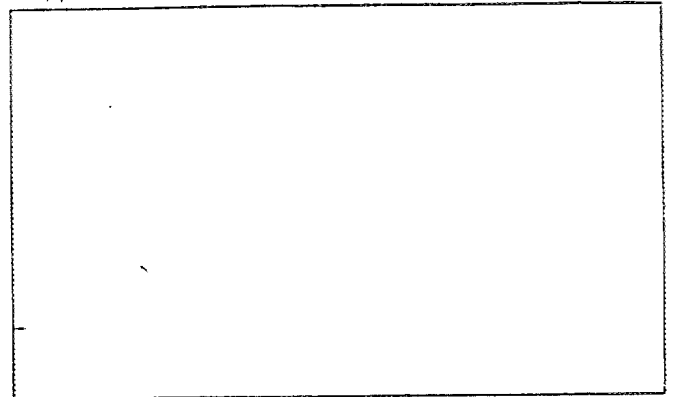
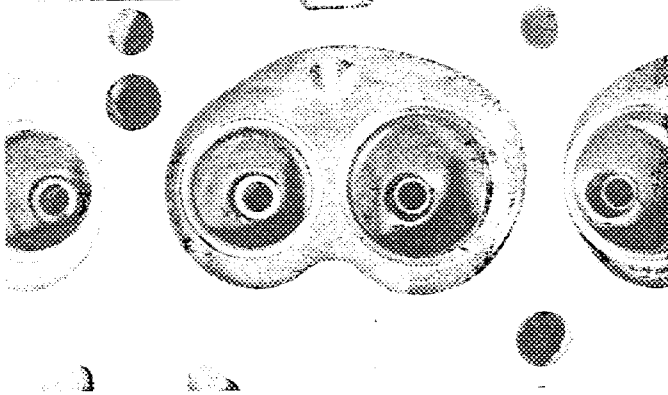
J, engine unit out of car, from right. With clutch and accessories but without air filter nor gear-box.

K, Engine unit out of car, from left. With clutch and accessories but without gear-box nor air filter.



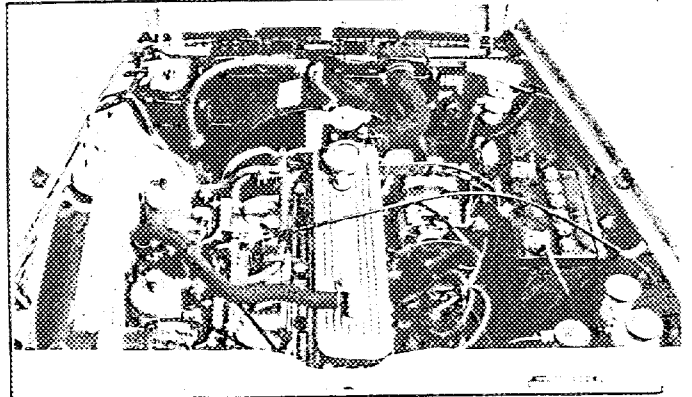
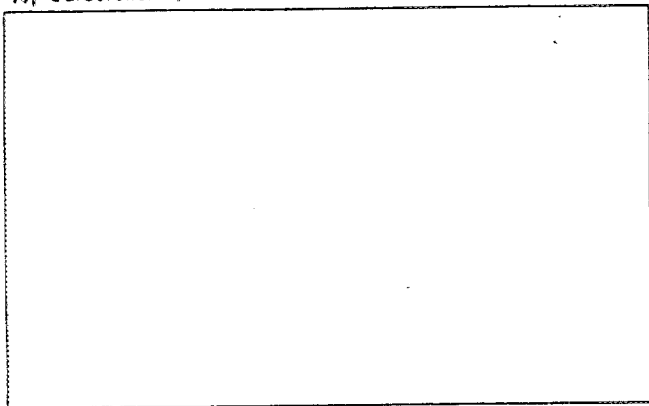
L, combustion chamber

M, piston crown



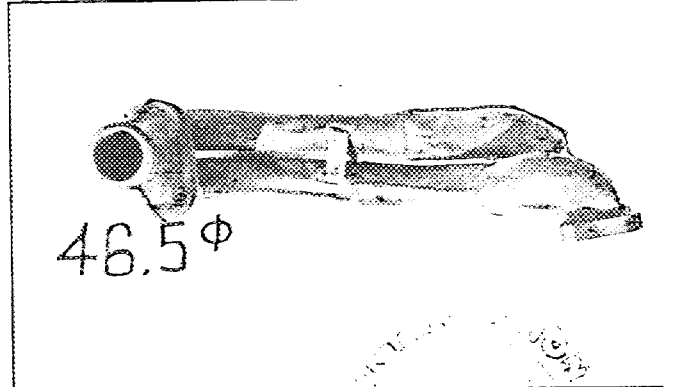
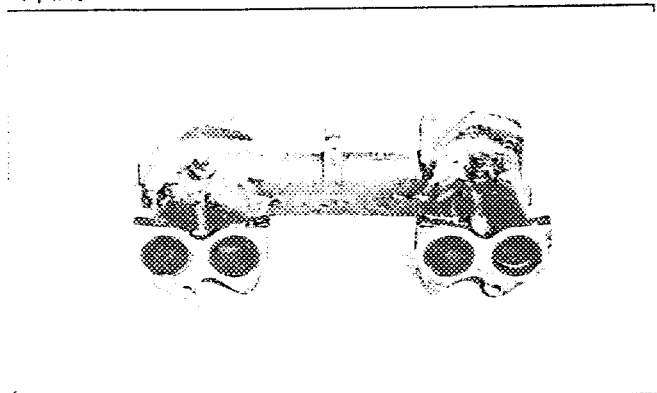
N, Carburettor (view from side of manifold)

O, engine in car with all accessories, bonnet open or removed.



P, inlet manifold

Q, exhaust manifold



TWO STROKE ENGINES

300. System of cylinder scavenging					
301. Type of lubrication					
302. Inlet ports, length measured around cylinder wall				mm	inches
303. Height inlet port	mm	in.	304. Area	mm ²	sq. in.
305. Exhaust ports, length measured around cylinder wall					
306. Height exhaust port	mm	in.	307. Area	mm ²	sq. in.
308. Transfer port, length measured around cylinder wall					
309. Height transfer port	mm	in.	310. Area	mm ²	sq. in.
311. Piston ports, length measured around piston					
312. Height piston port	mm	in.	313. Area	mm ²	sq. in.
314. Method of precompression					
			315. Precompression cyl.:	yes / no	
316. Bore	mm	inches	317. Stroke	mm	inches
318. Distance from top of cyl. block to highest point of exhaust port :					
319. Distance from top of cyl. block to lowest point of inlet port :					
320. Distance from top of cyl. block to highest point of transfer port :					
321. <u>Drawing of cylinder ports.</u>					

7. Supercharging—state full details hereafter :

JAPAN AUTOMOBILE FEDERATION

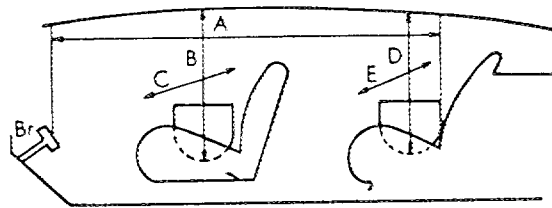
難波靖治

Yasuharu Nanba



DIMENSIONS OF INTERIOR
 (Conform to Art. 253 b of Appendix J)

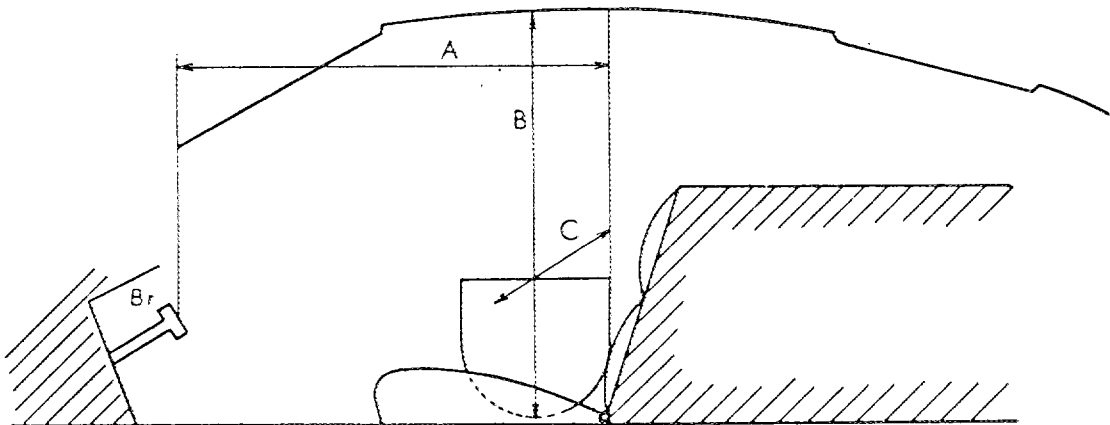
For four seaters :



cm

Minimum Dimensions				
A	B	C	D	E

For two seaters :



cm

Minimum Dimensions		
A	B	C
108	87	113