

FÉDÉRATION INTERNATIONALE DE L'AUTOMOBILE

FICHE D'HOMOLOGATION CONFORME A L'ANNEXE J DU CODE SPORTIF INTERNATIONAL
POUR LES VOITURES DES GROUPES 1 A 5

BOOK OF RECOGNITION IN ACCORDANCE WITH APPENDIX J TO THE INTERNATIONAL
SPORTING CODE FOR CARS OF GROUPS 1 TO 5

Constructeur/Manufacturer Volvo Car BV Modèle / Model Volvo 343 DL 1.4
Cylindrée / Cylinder capacity 1397
Constructeur du châssis / Chassis Manufacturer Volvo Car BV
Constructeur du moteur / Engine Manufacturer Volvo/Renault
Homologation valable à partir du / Recognition valid as from 1.4.77
Modèle homologué en groupe 1 Numéro d'homologation 5648
Model recognized in group Recognition number

Photo A : voiture vue de 3/4 AV
Photo A : 3/4 view of car from front

Photo B : voiture vue de 3/4 AR
Photo B : 3/4 view of car from rear



CARACTÉRISTIQUES GÉNÉRALES / GENERAL CHARACTERISTICS :

- 1) Mode de construction : ~~construction séparée~~ / monocoque.
Type of car construction : ~~separate~~ / unitary construction.
- 2) Matériau du châssis steel Matériau de la carrosserie steel
Material of chassis Material of coachwork
- 3) Empattement droit 2395 mm Gauche 2395 mm
Wheelbase right Left
- 4) Largeur de la carrosserie mesurée aux axes AV 1660 mm
Width of bodywork measured at front axle
- 5) Largeur de la carrosserie mesurée aux axes AR 1660 mm
Width of bodywork measured at rear axle
- 6) Longueur hors-tout avec pare-chocs 4204 mm Sans pare-chocs 4045 mm
Overall length with bumpers Without bumpers
- 7) Type de suspension : AV Mc Pherson AR de Dion
Type of suspension : Front Rear

(Photo D)

(Photo E)

Signature et cachet de
l'autorité sportive nationale,

Signature et cachet
de la F.I.A. de l'AUTOMOBILE

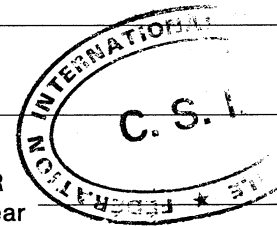


MOTEUR :

- 8) Cycle four stroke
- 9) Nombre et disposition des cylindres four in line
Number and disposition of cylinders
- 10) Système de refroidissement water
Cooling system
- 11) Emplacement et position du moteur front of car
Location and position of engine
- 12) Matériau du bloc moteur cast iron
Material of engine block
- 13) Roues motrices : AV - AR rear
Drive wheels : Front - Rear
- 14) Emplacement de la boîte de vitesses at rear axle
Location of gear-box

CARROSSERIE ET ÉQUIPEMENT INTÉRIEUR / COACHWORK AND INTERIOR

- 20) Nombre de portes 2
Number of doors
- 21) Matériau des portes : AV steel AR AR
Material of doors : Front steel Rear AR
- 22) Matériau du capot moteur steel
Material of bonnet
- 23) Matériau du capot coffre steel
Material of boot lid
- 24) Matériau de la lunette AR tempered glass
Material of rear window
- 25) Matériau du pare-brise laminated glass
Material of windscreen
- 26) Matériau des glaces des portières AV tempered glass
Material of front door windows
- 27) Matériau des glaces des portières AR tempered glass
Material of rear door windows
- 28) Système d'ouverture des vitres portières AV window winders AR AR
Sliding system of door windows Front AR Rear AR
- 29) Matériau des glaces de custode tempered glass
Material of rear quarter lights
- 30) Poids siège (s) AV (enlevés de la voiture avec dossiers, glissières et supports) 12 kg
Weight of front seat(s) (complete with supports and rails, out of the car)
- 31) Matériau du pare-choc AV steel / polyurethane Poids 7.7 kg
Front bumper material steel / polyurethane Weight
- 32) Matériau du pare-choc AR steel / polyurethane Poids 7.9 kg
Rear bumper material steel / polyurethane Weight
- 33) Ventilation : oui / yes



DIRECTION / STEERING

- 40) Type rack and pinion
 41) Servo-assistance no

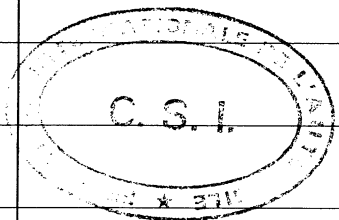
SUSPENSION

- 45) Suspension AV (photo D) Type de ressort (individual) coil springs
 Front suspension (photo D) Type of spring
 46) Nombre d'amortisseurs 2
 Number of shock absorbers
 47) Suspension AR (Photo E) Type de ressort leaf springs
 Rear suspension (Photo E) Type of spring
 48) Nombre d'amortisseurs 2
 Number of shock absorbers
 49) Système de fixation des roues nut and bolt
 Method of fixation of wheels

FREINS - BRAKES

- 50) Système hydraulic
 Method of operation
 51) Servo frein (si prévu) Type : vacuum servo
 Servo assistance (if fitted) Type :
 52) Nombre de maîtres-cylindres 1
 Number of master-cylinders

	AVANT / FRONT	ARRIERE / REAR
53) Nombre de cylindres par roue Number of cylinders per wheel	1	1
54) Alésage Bore	48 mm	19.05 mm
Freins à tambour / Drum brakes		
55) Diamètre intérieur Inside diameter		203.2 mm
56) Nombre de mâchoires par frein Number of shoes per brake		2
57) Surface de freinage par frein Total area per brake		12150 mm ²
Freins à disques/Disc brakes		
58) Largeur des sabots Width of brake linings	47 mm	
59) Nombre de sabots par frein Number of pads per brake	2	
60) Surface de freinage par frein Total area per brake	5600 mm ²	

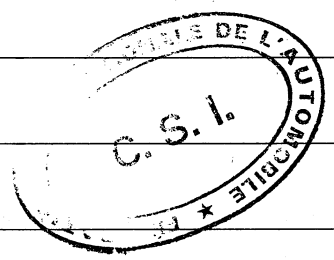


MOTEUR / ENGINE

- 65) Alésage 76 mm
Bore
- 67) Course 77 mm
Stroke
- 68) Cylindrée totale 1397 cm³
Total cylinder-capacity
- 69) Cylindrée maximum autorisée 1419 cm³
Maximum cylinder-capacity allowed
- 70) Culasse : matériau aluminium
Head : material
- 71) Nombre
Number
- 72) Type de vilebrequin integral
Type of crankshaft
- Coulé / estampé
Moulded / stamped stamped
- 73) Nombre de paliers de vilebrequin 5
Number of crankshaft main bearings
- 74) Diamètre maximal des manetons de vilebrequin 54.796 mm
Maximum diameter of the big end journal
- 75) Tête de bielle : type aluminium/steel diamètre 43.98 mm
Connecting rod big end type
- 76) Matériau des chapeaux des paliers de vilebrequin aluminium/steel
Material of bearing cap
- 77) Matériau du volant moteur steel - cast
Material of flywheel
- 78) Matériau du vilebrequin steel
Crankshaft material
- 79) Matériau de la bielle steel
Connecting rod material
- 80) Système de graissage : carter sec - carter humide oil in sump
Lubrication system : dry-sump - oil in sump
- 81) Nombre de pompes à huile 1
Number of oil pumps

Moteur 4 temps / 4 stroke engines

- 82) Nombre d'arbres à cames 1 Emplacement in cylinder block
Number of camshafts Location
- 83) Système de commande chain
Type of camshaft drive
- 84) Système de commande des soupapes push rod
Type of valve operation
- 85) Nombre de soupapes d'admission par cylindre 1
Number of inlet valves per cylinder
- 86) Nombre de soupapes d'échappement par cylindre 1
Number of exhaust valves per cylinder
- 87) Nombre de distributeurs 1
Number of distributors
- 88) Nombre de bougies par cylindre 1
Number of spark plug per cylinder



TRANSMISSION AUX ROUES / DRIVE TRAIN

Embrayage / Clutch

- 90) Nombre de disques 1
 Number of plates _____
- 91) Système de commande automatic
 Method of operating clutch _____

Boîte de vitesses / Gear-box

- 92) Contrôle manuel, marque _____
 Manual type, make _____
- 93) Nombre de rapports AV _____
 Number of gear-box ratios forward _____
- 94) Boîte automatique, marque Volvo
 Automatic, make _____
- 95) Nombre de rapports AV _____
 Number of gear-ratios forward _____

96	Manuelle / Manual		Automatique		Supp. manuel / Automatique			
	Rapport Ratio	N. dents Nr teeth	Rapport Ratio	N. dents Nr teeth	Rapport Ratio	N. dents Nr teeth	Rapport Ratio	N. dents Nr teeth
1			infinite variable					
2			14.22:1 -					
3			- 3.60:1					
4								
5								
6								
M. AR / Rev.								

- 97) Surmultiplication type _____
 Overdrive type _____
- 98) Nombre de dents _____
 Number of teeth _____
- 99) Rapport Ratio _____
- 100) Vitesses en marche AV avec surmultiplication _____
 Forward gears on which overdrive can be selected _____

Pont/moteur / Final drive

- 101) Type du pont moteur gear train
 Type of final drive _____
- 102) Type de différentiel _____
 Type of differential _____
- 103) Nombre de dents _____
 Number of teeth _____
- 104) Rapport Ratio _____

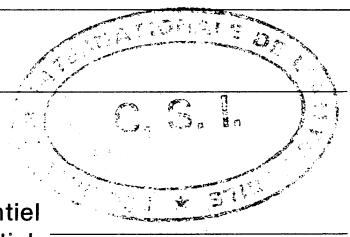


Photo C



Photo D

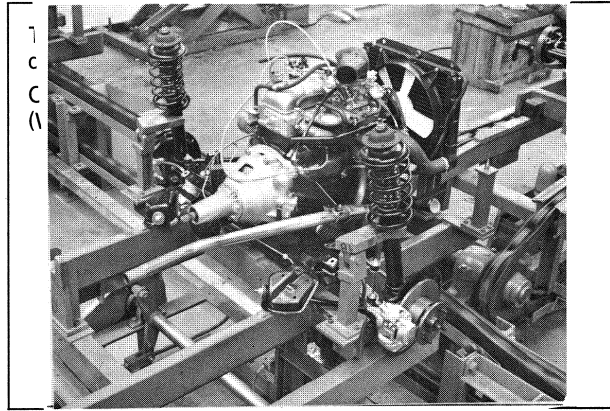


Photo E

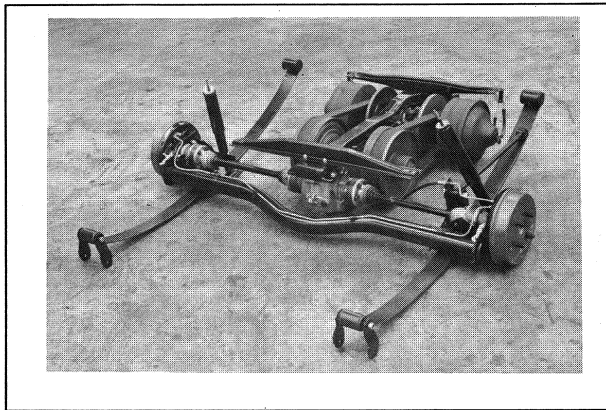


Photo F

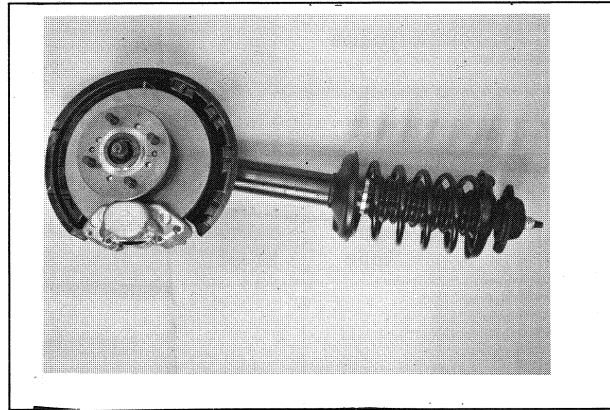


Photo G

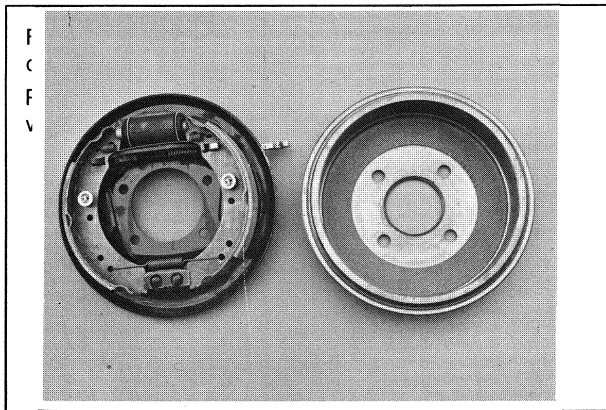


Photo H

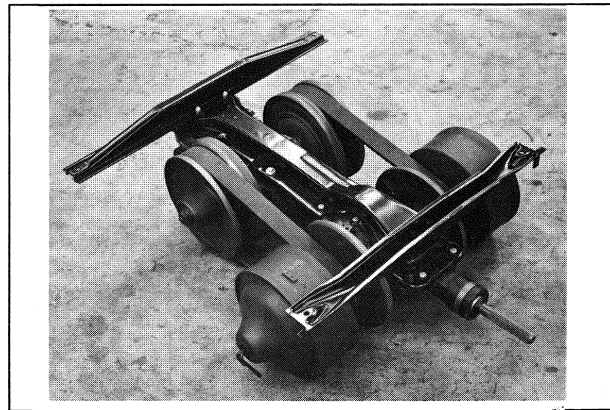


Photo I

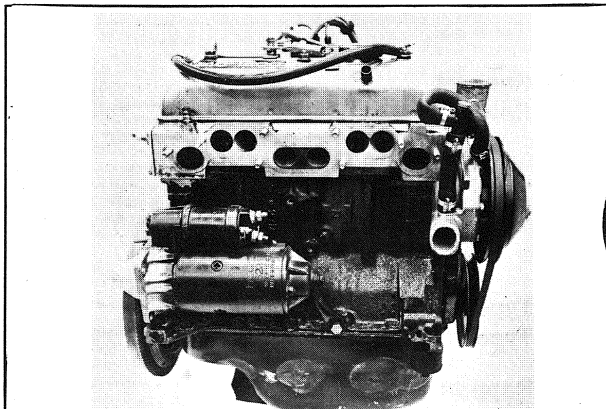


Photo J

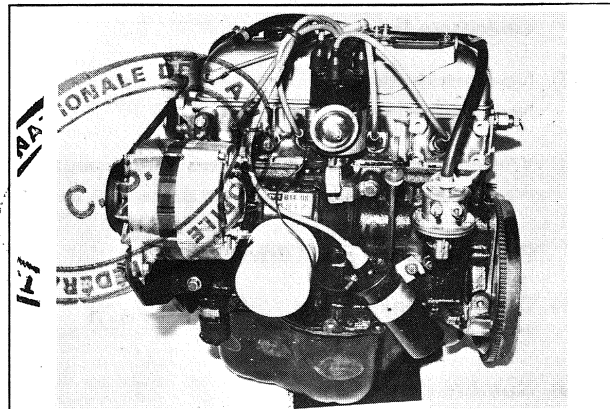
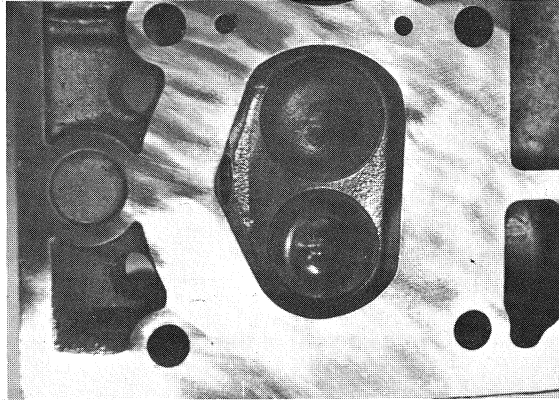
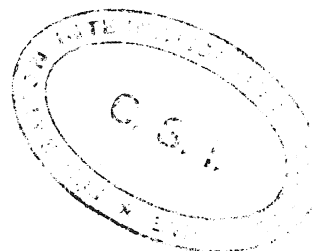


Photo K



Informations supplémentaires
Additional informations.



COMPLÉMENT POUR LES GROUPES 1 ET 3
DU CODE SPORTIF INTERNATIONAL

ADDITIONAL DATA FOR GROUPS 1 AND 3
TO THE INTERNATIONAL SPORTING CODE

CAPACITÉS ET DIMENSIONS / CAPACITIES AND DIMENSIONS

- 110) Voie AV / Front track 1350/1366 mm
- 111) Voie AR / Rear track 1380/1396 mm
- 112) Garde au sol (pour vérification de la voie) 170 mm
Ground clearance (for verification of the track)
- 113) Hauteur hors-tout de la voiture / Overall height of the car 1392/1440 mm
- 114) Capacité du réservoir d'essence (y compris la réserve) 45 litres
Fuel tank capacity (including reserve)
- 115) Nombre de places 5 116) Poids 950 kg
Seating capacity Weight

EQUIPEMENT ET GARNITURES / ACCESSORIES AND UPHOLSTERY

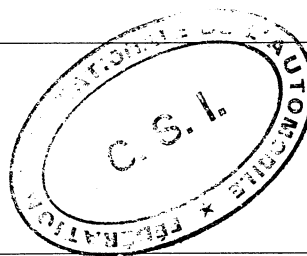
- 120) Chauffage intérieur : oui ~~non~~
Interior heating : yes ~~no~~
- 121) Climatisation (sur option) : ~~oui~~ - non
Air conditioning (in option) : ~~yes~~ - no
- 122) Sièges AV : type separate seats, cloth
Front seats : type
- 123) Sièges AR : type bench, cloth
Rear seats : type

ROUES / WHEELS

- 124) Matériau steel/aluminium
Matériel
- 125) Poids unitaire (roue nue) 6.135/4.81 kg (tolérance ± 5%)
Unitary weight (bare wheel)
- 126) Diamètre de la jante 330.2 mm
Rim diameter
- 127) Largeur de la jante 127/139.7 mm
Rim width

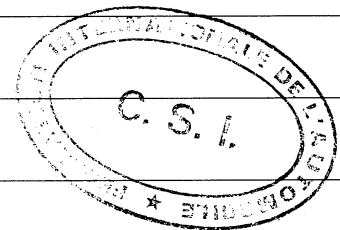
SUSPENSION

- 130) Stabilisateur AV (si prévu) yes
Front stabilizer (if fitted)
- 131) Stabilisateur AR (si prévu) no
Rear stabilizer (if fitted)



MOTEUR / ENGINE

- 135) Cylindrée par cylindre / Capacity per cylinder 349.3 cm³
- 136) Chemises : oui / ~~non~~
Sleeves : yes / ~~no~~
- 137) Nombre d'orifices d'admission par cylindres 1
Number of inlet ports per cylinder
- 138) Nombre d'orifices d'échappement par cylindre 1
Number of exhaust ports per cylinder
- 139) Rapport volumétrique 9.5:1
Compression ratio
- 140a) Volume de la chambre de combustion (minimum) _____
Volume of the combustion chamber
- 140b) Volume de la chambre de combustion dans la culasse 34 cm³
Volume of combustion chamber in head
- 141) Épaisseur du joint de culasse 1.2 mm
Thickness of head gasket inter tightened
- 142) Piston, matériau aluminium
Piston, material
- 143) Nombre de segments 3
Number of rings
- 144) Distance de la médiane de l'axe du piston au sommet du piston 37.5 mm
Distance from gudgeon pin center line to highest point of piston crown
- 145) Capacité du réservoir - carter 3.5 litres
Capacity, lubricant
- 146) Radiateur d'huile : ~~oui~~ - non
Oil cooler : ~~yes~~ - no
- 147) Capacité du circuit de refroidissement 5.5 litres
Capacity of cooling system
- 148) Ventilateur (si prévu), diamètre 320 mm Matériau plastic
Cooling fan (if fitted), diameter Material
- 149) Nombre de pales du ventilateur 5
Number of fan blades
- 150) Paliers vilebrequin, type aluminium/steel diamètre 54.795 mm
Crankshaft main bearings, type diameter
- 151) Poids volant (nu) 7.4 kg
Weight of flywheel (clean)
- 152) Poids du volant avec couronne de démarreur 7.87 kg
Weight of flywheel with starter ring
- 153) Poids du volant avec embrayage 10.87 kg
Weight of flywheel with clutch
- 154) Poids du vilebrequin 10.08 kg
Weight of crankshaft
- 155) Poids de la bielle 0.508 - 0.528 kg
Weight of con-rod
- 156) Poids du piston avec axe et segments 0.442 - 0.458 kg
Weight of piston with rings and pin



Marque / Make Volvo Modèle / Model 343 DL 5648

ADMISSION / INLET

- 160) Matériau du collecteur d'admission aluminium
Material of inlet manifold
- 161) Diamètre extérieur des soupapes 33.5 mm
Outside diameter of valves
- 162) Levée maximum des soupapes 7.73 mm
Maximum valve lift
- 163) Nombre de ressorts par soupape 1
Number of springs per valve
- 164) Type de ressort coil
Type of spring
- 165) Jeu théorique pour le calage de la distribution 0.15 mm
Theoretical timing clearance
- 166) Avance d'ouverture (avec jeu théorique) 23° B.T.D.C.
Valves open at (With tolerance for tappet clearance indicated)
- 167) Retard de fermeture 79° A.B.D.C.
Valves close at

ÉCHAPPEMENT / EXHAUST

- 170) Matériau du collecteur d'échappement cast iron
Material of exhaust manifold
- 171) Diamètre extérieur des soupapes 30.3 mm
Outside diameter of valves
- 172) Levée maximum des soupapes 7.76 mm
Maximum valve lift
- 173) Nombre de ressorts par soupape 1
Number of springs per valve
- 174) Type de ressort coil
Type of spring
- 175) Jeu théorique pour le calage de la distribution 0.20 mm
Theoretical timing clearance
- 176) Avance d'ouverture (avec jeu théorique) 79° B.B.D.C.
Valves open at (with tolerance for tappet clearance indicated)
- 177) Retard de fermeture 39° A.T.D.C.
Valves close at

ALIMENTATION PAR CARBURATEURS / CARBURATION

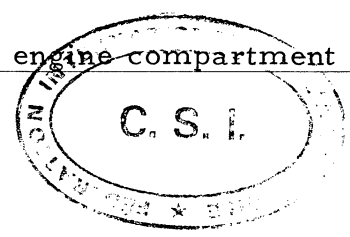
- 180) Nombre de carburateurs 1
Number of carburetors
- 181) Type down draught, compound
- 182) Marque Weber 183) Modèle 32 DIR 57 alt. 32 DIR 48
Make Model
- 184) Nombre de passages de gaz par carburateur 2
Number of mixture passages per carburettor



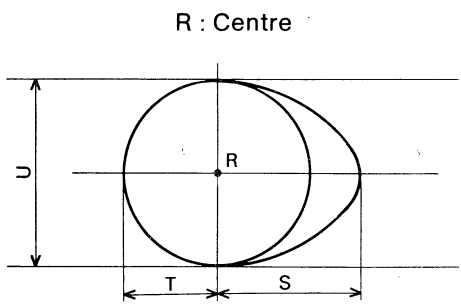
- 185) Diamètre de la tubulure de gaz à la sortie du carburateur 2 x dia. 32 mm
 Flange hole diameter of exit port of carburettor
- 186) Diamètre du diffuseur au point d'étranglement maximum dia. 23, dia. 24
 Minimum diameter of venturi
- Injection** (si prévue) (if fitted)
- 187) Marque de la pompe _____
 Make of pump
- 188) Nombre de pistons _____
 Number of plungers
- 189) Modèle ou type de la pompe _____
 Model or type of pump
- 190) Nombre total d'injecteurs _____
 Total number of injectors
- 191) Emplacement des injecteurs _____
 Location of injectors
- 192) Diamètre de la pipe d'admission au point de passage le plus étroit _____
 Minimum diameter of inlet pipe

ÉQUIPEMENT DU MOTEUR / ENGINE ACCESSORIES

- 195) Pompe à essence - mécanique et/ou électrique mechanical
 Fuel pump - mechanical and/or electrical
- 196) Nombre 1
 Number
- 197) Type du système d'allumage coil
 Type of ignition system
- 198) Nombre de bobines 1
 Number of ignition coils
- 199) Génératrice : type alternator Nombre 1
 Generator : type Number
- 200) Système d'entraînement belt
 Method of drive
- 201) Batterie / Battery
 a) Tension 12 V b) Emplacement engine compartment
 Voltage Location



205) Arbres à cames / Camshaft



	Camé admission Inlet cam	Camé échappement Exhaust cam
S =	18.68mm 0.734 inches	18.68mm 0.734 inches
T =	13.5 mm 0.531 inches	13.5 mm 0.531 inches
U =	27 mm 1.063 inches	27 mm 1.063 inches

Photo K

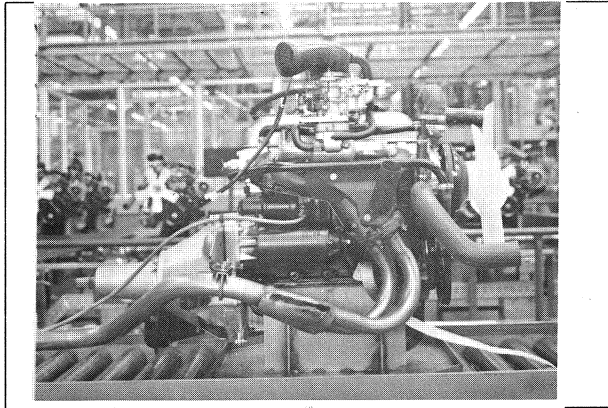


Photo L

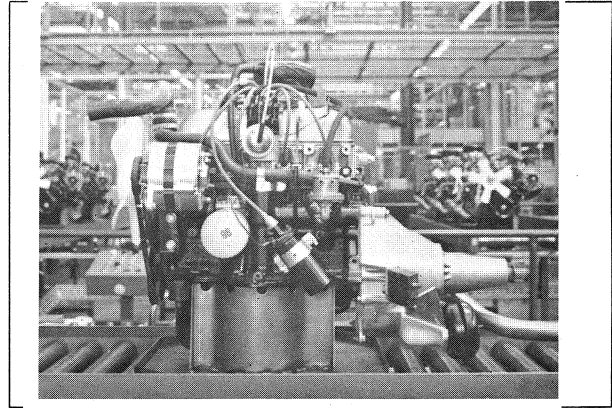


Photo M

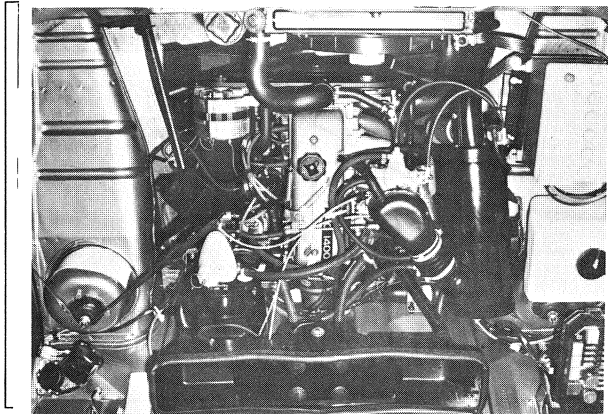


Photo N



Photo P

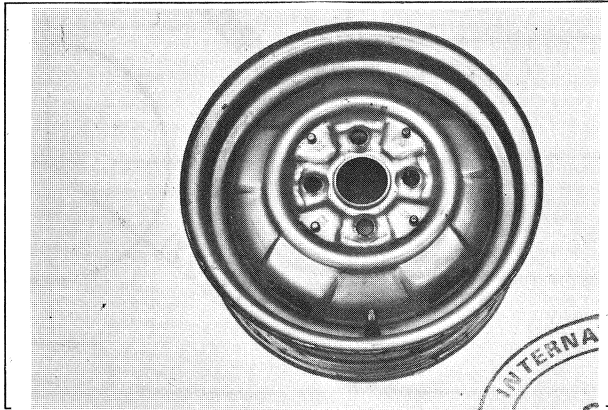


Photo Q

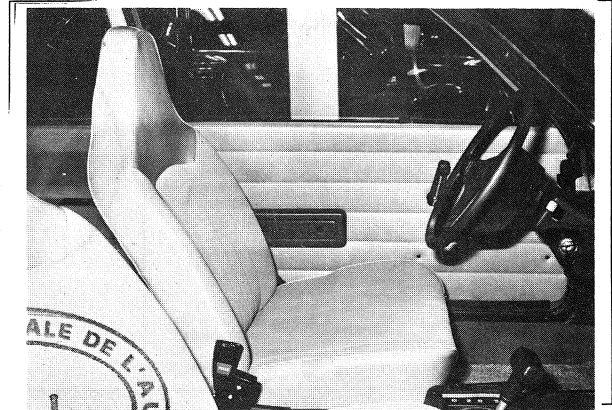


Photo R

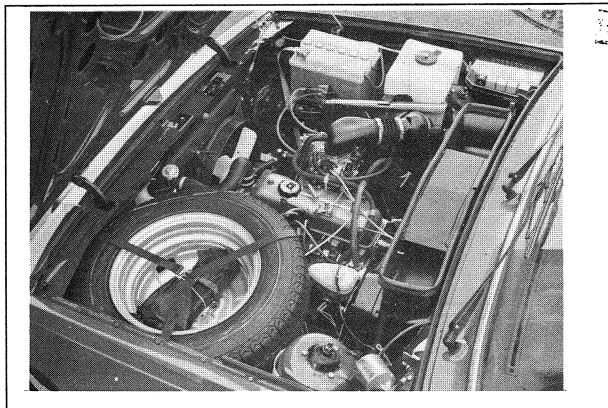
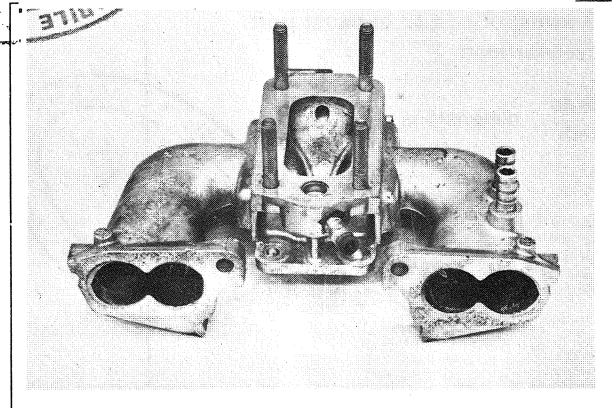
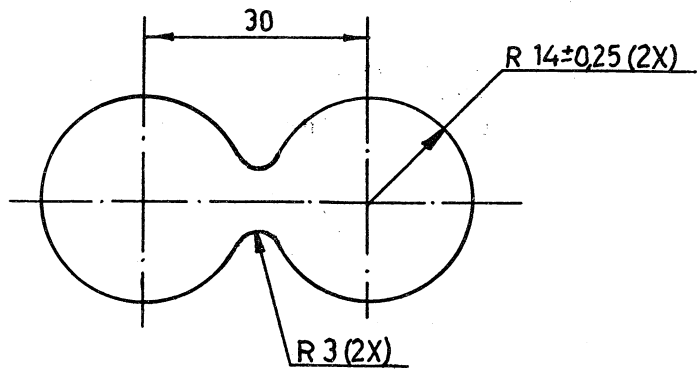


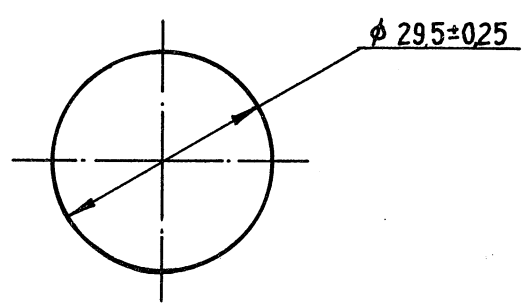
Photo S



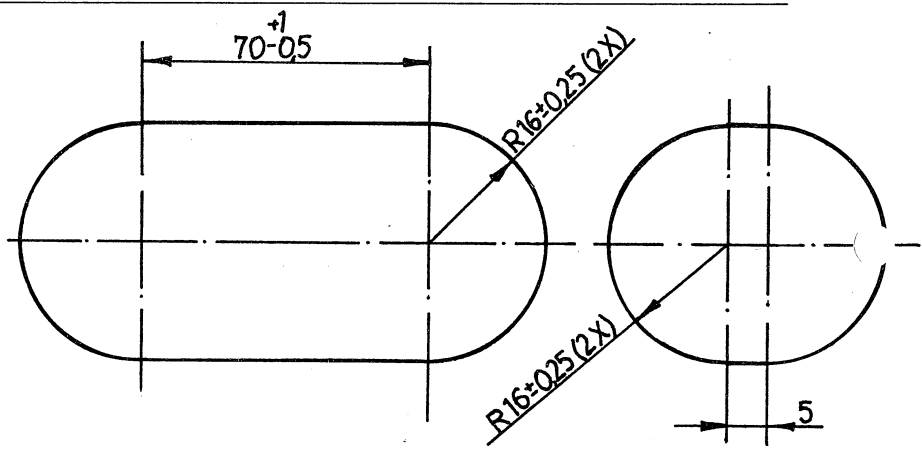
Dessin orifices collecteur admission, face côté culasse.
 Drawing inlet manifold ports, side of cylinderhead.
 avec dimensions
 with



Dessin orifices admission culasse face collecteur.
 Drawing of entrance to inlet port of cylinderhead.
 avec dimensions
 with



Dessin orifices collecteur échappement face côté culasse.
 Drawing of exhaust manifold ports, side of cylinderhead.
 avec dimensions
 with



Dessin orifices échappement culasse face collecteur.
 Drawing of exit to exhaust port cylinderhead.
 avec dimensions
 with

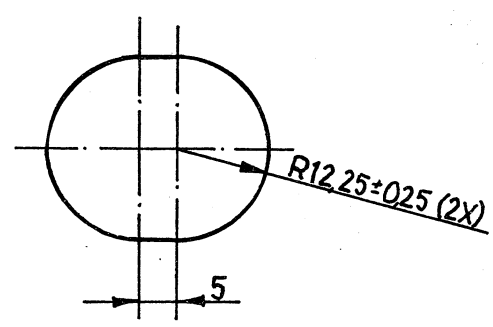
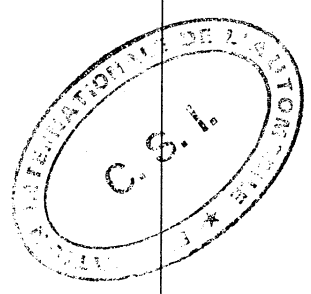


Photo T

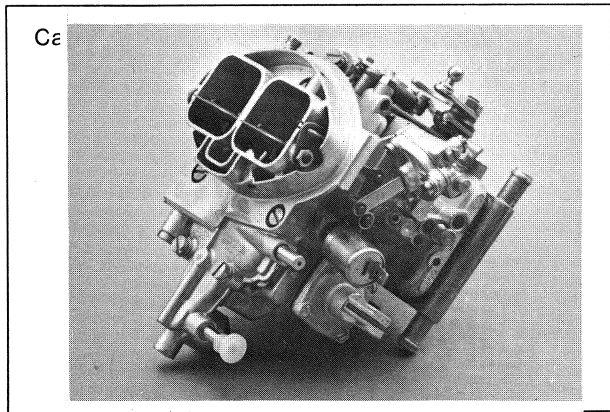


Photo U

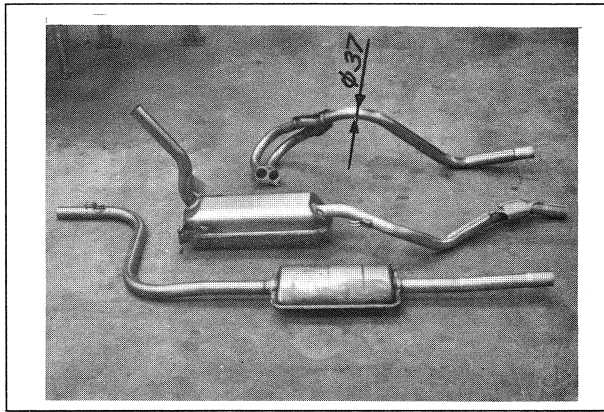
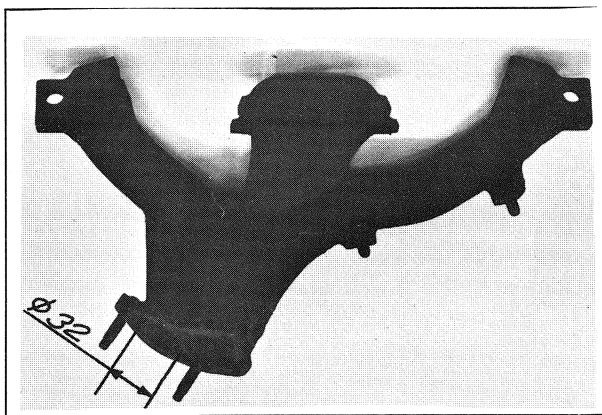
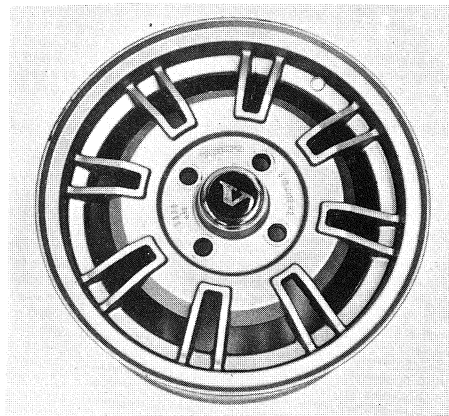


Photo V



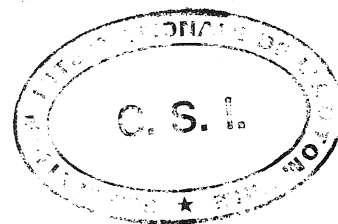
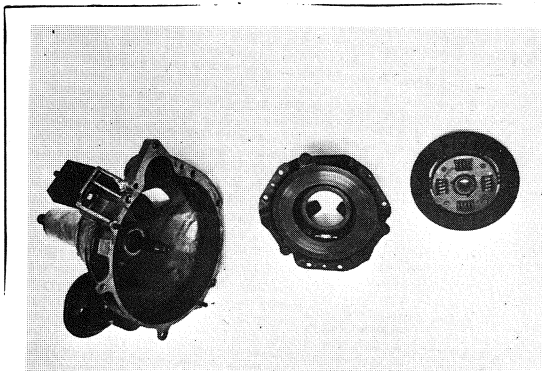
Informations supplémentaires
Additional informations

photo I



Grille de vitesses
Gear change gate

Photo W





F. I. A. Recognition No.
FIA Identifieringskort Nr

5648
1/1V

KUNGL. AUTOMOBIL KLUBBEN
THE ROYAL SWEDISH AUTOMOBILE CLUB

Form of Recognition (normal development of original vehicle type)
Identifieringskort (normal utveckling av vagnstypen)

Variant

valid from 1.4.77 upon documentation delivered by the manufacturer.
gällande fr. o. m. på grundval av från tillverkaren lämnade uppgifter.

Make Volvo
Märke

Previously recognized type, to which this extension refers Volvo 343 DL 1.4
Tidigare klassad typ, till vilken denna utökning hänföres

Date when the first vehicles in this stage of development were manufactured 24/2 1976
Tillverkningsdatum för de första fordonen av denna vidareutveckling

Serial No. of the type inaugurating this extension 343510
Nummerserie för denna utvecklade typ

The 343 L 1.4 recognized in Category 1
Modellen, klassad i kategori

by the F. I. A. on the List
av FIA den Lista

as a normal
som normal

development of the original vehicle type.
utveckling av vagnstypen



Stamp and signature of the F. I. A.
FIA:s signatur och stämpel

DESCRIPTION OF MODIFICATIONS HAVING LED TO THIS RECOGNITION
BESKRIVNING AV DE ÄNDRINGAR, SOM LETT TILL DENNA KLASSNING

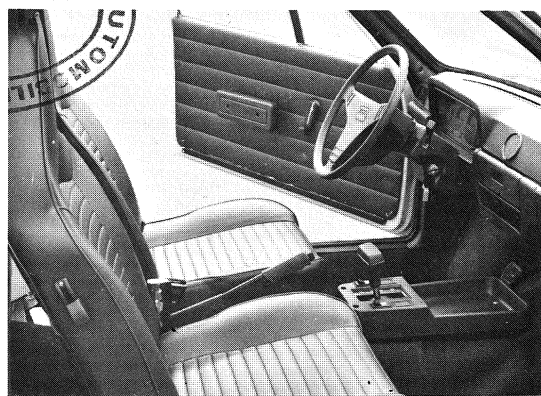
[Handwritten signature]

Form of Recognition (Normal development of original vehicle type)

Identifieringskort (Normal utveckling av vagnstypen)

No. _____ Make Volvo Type 343 L
Nr _____ Märke _____ Typ _____

Photographic documentation
Fotografier



Stockholm den 12/11 1976
KUNGL AUTOMOBIL KLUBBEN
SVENSKA BILSPORTS FÖRBUNDET
THE SWEDISH AUTOMOBILE FEDERATION

[Handwritten signature]



F. I. A. Recognition No. 5648

FIA Identifieringskort Nr

02/01E

KUNGL AUTOMOBIL KLUBBEN
THE ROYAL SWEDISH AUTOMOBILE CLUB

Form of Recognition (normal development of original vehicle type)

Identifieringskort (normal utveckling av vagnstypen)

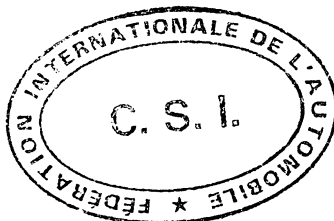
valid from gällande fr. o. m.	<u>1 JAN 1979</u>	upon documentation delivered by the manufacturer. på grundval av från tillverkaren lämnade uppgifter.
Make Märke	<u>VOLVO</u>	
Previously recognized type, to which this extension refers Tidigare klassad typ, till vilken denna utökning hänföres	<u>343 DL 1,4</u>	
Date when the first vehicles in this stage of development were manufactured Tillverkningsdatum för de första fordonen av denna vidareutveckling	<u>1/8 1978</u>	
Serial No. of the type inaugurating this extension Nummerserie för denna utvecklade typ	<u>388000</u>	
The Modellen	<u>343 DL 1,4</u>	recognized in Category klassad i kategori <u>1</u>
by the F.I.A. on the av FIA den		List Lista
development of the original vehicle type. utveckling av vagnstypen		as a normal som normal

Stamp and signature of the F.I.A.
FIA:s signatur och stämpel

DESCRIPTION OF MODIFICATIONS HAVING LED TO THIS RECOGNITION
BESKRIVNING AV DE ÄNDRINGAR, SOM LETT TILL DENNA KLASSNING

	<u>1979 year model</u>	Alt 1	Alt 2
139	Compression ratio:	9,5:1	9,25:1
140b	Volume of combustion chamber in head:	34 cm ³	35 cm ³
161	Outside diameter of inlet valve:	33,5 mm	34,2 mm
171	Outside diameter of exhaust valve:	30,3 mm	29,0 mm
183	Model of carburettor:	Weber 32 DIR 74	32 DIR 83 or 32 DIR 85

The two engine versions have the same output (and the same as the original version)



SVENSKA BILSPORTFÖRBUNDET
THE SWEDISH AUTOMOBILE SPORT FEDERATION

02/018

Form of Recognition (Normal development of original vehicle type)

Identifiseringskort (Normal utveckling av vagnstypen)

No. 5648
Nr

Make VOLVO
Märke

Type 343 DL 1,4
Typ

Photographic documentation
Fotografier

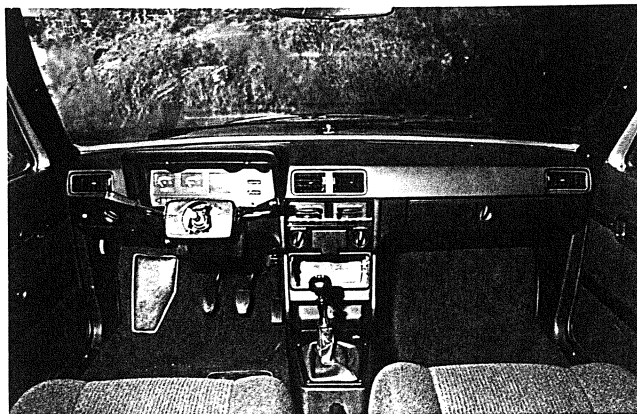
Photo A



Photo B



Photo C



Stockholm den _____ 19 _____

KUNGL AUTOMOBIL KLUBBEN

SVENSKA BILSPORTFÖRBUNDET

THE SWEDISH AUTOMOBILE SPORT FEDERATION

A handwritten signature or set of initials in black ink, located at the bottom right of the page.



F. I. A. Recognition No.
FIA Identifieringskort Nr

5648

03 / 02 V

KUNGL AUTOMOBIL KLUBBEN
THE ROYAL SWEDISH AUTOMOBILE CLUB

Form of Recognition (Variation)
Identifieringskort (Variant)

valid from -1. JAN. 1979 upon documentation delivered by the manufacturer.
gällande fr. o. m. _____ på grundval av från tillverkaren lämnade uppgifter.

Make VOLVO

Previously recognized type, to which this extension refers 343 DL 1,4
Tidigare klassad typ, till vilken detta tillägg hänföres _____

Date when the first vehicles in this stage of development were manufactured _____
Tillverkningsdatum för de första fordonen av denna vidareutveckling _____

Serial No. of the type inaugurating this extension _____
Nummerserie för denna utvecklade typ _____

Model name of this variation _____
Modellbeteckning för denna variant _____

The 343 DL 1,4 with roll-over bar recognized in Category 1
Modellen _____, klassad i kategori _____

by the F.I.A. on the _____ List _____ as a normal
av F.I.A. den _____ Lista _____ som normal

development of the original vehicle type.
utveckling av vagnstypen _____

Stamp and signature of the F.I.A.
FIA:s signatur och stämpel

DESCRIPTION OF MODIFICATIONS HAVING LED TO THIS RECOGNITION
BESKRIVNING AV DE ÄNDRINGAR, SOM LETT TILL DENNA KLASSNING

Roll-over bar

Part number: 1156554

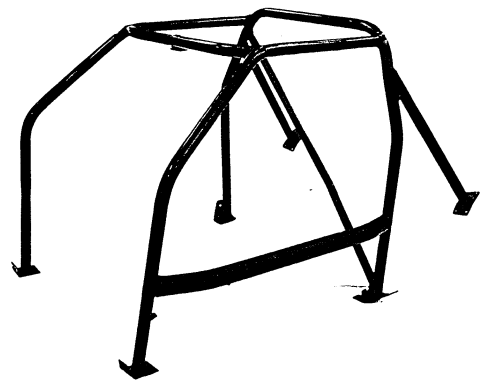
Outside diameter of tubes: 50 mm alt
40 mm

Wall thickness of tubes: 3,5 mm

Material: SIS 144212 (AlSiMg)

R_{eL} (elastic limit): 285 N/mm²

Weight: 17,5 kg



The manufacturer certifies that the car's structure, including the roll-bar, complies with the standards required by the FIA for open cars.



[Handwritten signature]

SVENSKA BILSPORTFÖRBUNDET
THE SWEDISH AUTOMOBILE-SPORT FEDERATION

[Handwritten signature]



F. I. A. Recognition No. 5648
 FIA Identifieringskort Nr

5648

34/03V

KUNGL AUTOMOBIL KLUBBEN
 THE ROYAL SWEDISH AUTOMOBILE CLUB

Form of Recognition (Variation)
Identifieringskort (Variant)

valid from _____ upon documentation delivered by the manufacturer.
 gällande fr. o. m. _____ på grundval av från tillverkaren lämnade uppgifter.

Make VOLVO
 Märke _____

Previously recognized type, to which this extension refers VOLVO 343 DL 1,4
 Tidigare klassad typ, till vilken detta tillägg hänföres _____

Date when the first vehicles in this stage of development were manufactured 22 May 1978
 Tillverkningsdatum för de första fordonen av denna vidareutveckling _____

Serial No. of the type inaugurating this extension 370000
 Nummerserie för denna utvecklade typ _____

Model name of this variation
 Modellbeteckning för denna variant

The 343 DL 1,4 MT recognized in Category 1
 Modellen _____ klassad i kategori _____

by the F.I.A. on the -1. JAN. 1979 List _____ as a normal
 av F.I.A. den _____ Lista _____ som normal

development of the original vehicle type.
 utveckling av vagnstypen

Stamp and signature of the F.I.A.
 FIA:s signatur och stämpel

DESCRIPTION OF MODIFICATIONS HAVING LED TO THIS RECOGNITION
 BESKRIVNING AV DE ÄNDRINGAR, SOM LETT TILL DENNA KLASSNING

MANUAL GEARBOX

- | | | |
|---------|-----------------------------|-------|
| 90, 213 | Number of clutch plates: | 1 |
| 91 | Method of operating clutch: | Cable |
| 92 | Manual gearbox, make: | Volvo |
| 93, 215 | Number of forward ratios: | 4 |

SVENSKA BILSPORTFÖRBUNDET
 THE SWEDISH AUTOMOBILE-SPORT FEDERATION



Form of Recognition (Variation)
Identifiseringskort (Variant)

No. 5648
Nr _____

Make VOLVO
Märke _____

Type 343 DL 1,4 MT
Typ _____

Photographic documentation
Fotografier

Photo H

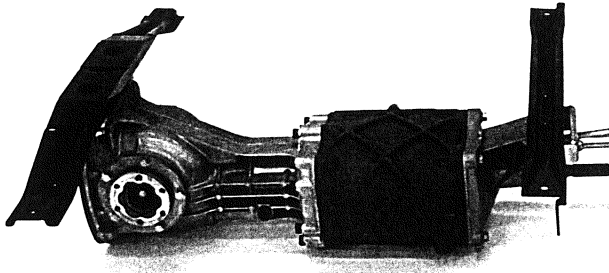
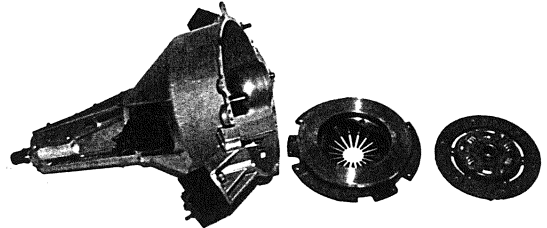
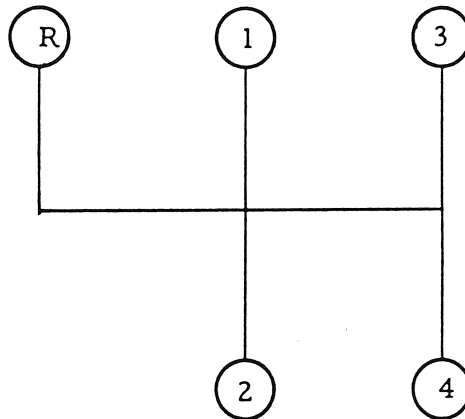


Photo W



Grille de vitesses
Gear change gate



Stockholm den _____ 19____



KUNGL AUTOMOBIL KLUBBEN
SVENSKA BILSPORTFÖRBUNDET
THE SWEDISH AUTOMOBILE SPORT FEDERATION



F. I. A. Recognition No. 5648

FIA Identifieringskort Nr

05/02 E

KUNGL AUTOMOBIL KLUBBEN
THE ROYAL SWEDISH AUTOMOBILE CLUB

Form of Recognition (normal development of original vehicle type)
Identifieringskort (normal utveckling av vagnstypen)

valid from _____ upon documentation delivered by the manufacturer.
gällande fr. o. m. _____ på grundval av från tillverkaren lämnade uppgifter.

Make VOLVO
Märke _____

Previously recognized type, to which this extension refers 343 DL 1,4
Tidigare klassad typ, till vilken denna utökning hänföres _____

Date when the first vehicles in this stage of development were manufactured 1 August 1977
Tillverkningsdatum för de första fordonen av denna vidareutveckling _____

Serial No. of the type inaugurating this extension 348000
Nummerserie för denna utvecklade typ _____

The 343 DL 1,4 recognized in Category 1
Modellen _____ klassad i kategori _____

by the F.I.A. on the -1.FEV.1979 List _____ as a normal
av FIA den _____ Lista _____ som normal

development of the original vehicle type.
utveckling av vagnstypen

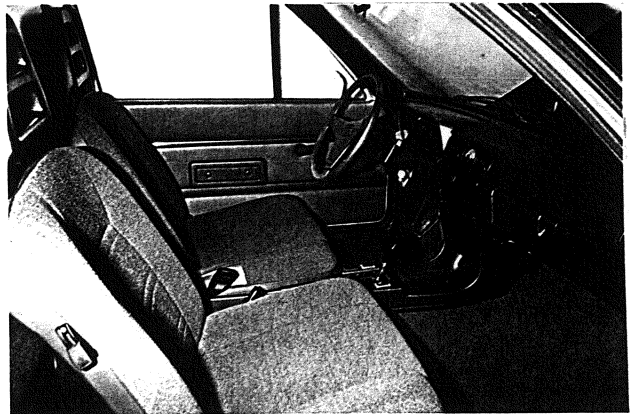
Stamp or
FIA:s sig

DESCRIPTION OF MODIFICATIONS HAVING LED TO THIS RECOGNITION
BESKRIVNING AV DE ÄNDRINGAR, SOM LETT TILL DENNA KLASSNING

1978 year model

Photo C

Photo Q



SVENSKA BILSPORTFÖRSÄNDET
THE SWEDISH AUTOMOBILE-SPORT FEDERATION





F. I. A. Recognition No.
FIA Identifieringskort Nr 5648

06 / 04 V

KUNGL AUTOMOBIL KLUBBEN
THE ROYAL SWEDISH AUTOMOBILE CLUB

Form of Recognition (Variation)
Identifieringskort (Variant)

valid from 1/1 1980 upon documentation delivered by the manufacturer.
gällande fr. o. m. på grundval av från tillverkaren lämnade uppgifter.

Make Volvo

Previously recognized type, to which this extension refers 343 DL 1,4
Tidigare klassad typ, till vilken detta tillägg hänföres

Date when the first vehicles in this stage of development were manufactured 1/8 1979
Tillverkningsdatum för de första fordonen av denna vidareutveckling

Serial No. of the type inaugurating this extension 458.000
Nummerserie för denna utvecklade typ

Model name of this variation 345
Modellbeteckning för denna variant

The 345 recognized in Category 1
Modellen klassad i kategori

by the F.I.A. on the -1. AVR. 1980 List as a normal
av F.I.A. den Lista som normal

development of the original vehicle type.
utveckling av vagnstypen

Stamp and signature of the F.I.A.
FIA:s signatur och stämpel

DESCRIPTION OF MODIFICATIONS HAVING LED TO THIS RECOGNITION
BESKRIVNING AV DE ÄNDRINGAR, SOM LETT TILL DENNA KLASSNING

5 door version

Photo A

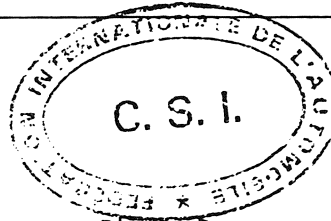


Photo B



116 weight 965 kg

SVENSKA BILSPORTFÖRBUNDET
THE SWEDISH AUTOMOBILE-SPORT FEDERATION



F. I. A. Recognition No. 5648
 FIA Identifieringskort Nr

07/05 V

KUNGL AUTOMOBIL KLUBBEN
 THE ROYAL SWEDISH AUTOMOBILE CLUB

Form of Recognition (Variation)
Identifieringskort (Variant)

valid from 1/1 1980 upon documentation delivered by the manufacturer.
 gällande fr. o. m. på grundval av från tillverkaren lämnade uppgifter.

Make Volvo

Previously recognized type, to which this extension refers 343 DL 1,4
 Tidigare klassad typ, till vilken detta tillägg hänföres

Date when the first vehicles in this stage of development were manufactured 1/8 1979
 Tillverkningsdatum för de första fordonen av denna vidareutveckling

Serial No. of the type inaugurating this extension 458.000
 Nummerserie för denna utvecklade typ

Model name of this variation 343 DL 1,4
 Modellbeteckning för denna variant

The 343 DL 1,4 recognized in Category 1
 Modellen klassad i kategori

by the F. I. A. on the -1. AVR. 1980 List as a normal
 av F. I. A. den Lista som normal

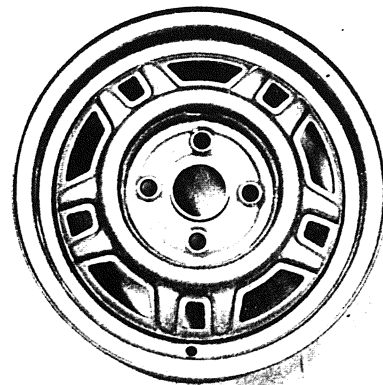
development of the original vehicle type.
 utveckling av vagnstypen

Stamp and signature of the F. I. A.
 FIA:s signatur och stämpel

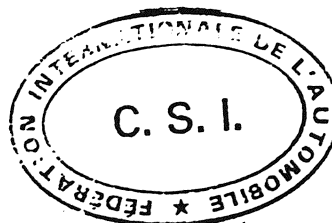
DESCRIPTION OF MODIFICATIONS HAVING LED TO THIS RECOGNITION
 BESKRIVNING AV DE ÄNDRINGAR, SOM LETT TILL DENNA KLASSNING

Following variants are introduced, individually or together:

- A. Alternative wheel giving increased track
 - 110. Front track 1.370
 - 111. Rear track 1.400
- B. Strengthened de Dion tube



SVENSKA BILSPORTFÖRBUNDET
 THE SWEDISH AUTOMOBILE-SPORT FEDERATION





F. I. A. Recognition No.
FIA Identifieringskort Nr 5648

08/06E

KUNGL AUTOMOBIL KLUBBEN
THE ROYAL SWEDISH AUTOMOBILE CLUB

Form of Recognition (normal development of original vehicle type)
Identifieringskort (normal utveckling av vagnstypen)

valid from gällande fr. o. m.	1/1 1980	upon documentation delivered by the manufacturer. på grundval av från tillverkaren lämnade uppgifter.
Make Märke	Volvo	
Previously recognized type, to which this extension refers Tidigare klassad typ, till vilken denna utökning hänföres		343 DL 1,4
Date when the first vehicles in this stage of development were manufactured Tillverkningsdatum för de första fordonen av denna vidareutveckling		1/8 1979
Serial No. of the type inaugurating this extension Nummerserie för denna utvecklade typ		458.000
The Modellen	343 DL 1,4	recognized in Category klassad i kategori
by the F.I.A. on the av FIA den	-1.AVR.1980	List Lista
development of the original vehicle type. utveckling av vagnstypen		as a normal som normal

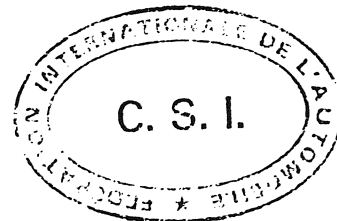
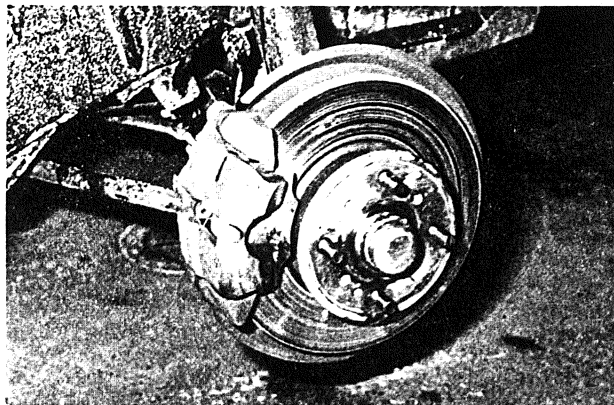
Stamp and signature of the F.I.A.
FIA:s signatur och stämpel

DESCRIPTION OF MODIFICATIONS HAVING LED TO THIS RECOGNITION
BESKRIVNING AV DE ÄNDRINGAR, SOM LETT TILL DENNA KLASSNING

1980 year model

58. Width of brake linings, front	45 mm
60. Total area per brake, front	7.850 mm ²
61. Thickness of brake disc, front	12,85 mm

Photo F



[Handwritten signature]