



# JAPAN AUTOMOBILE FEDERATION

社団法人 日本自動車連盟

JAF公認番号 T-209

発効年月日 1973年 7月 31日

F. I. A. Recognition No. 5558

Group 1

COMMISSION SPORTIVE

FEDERATION INTERNATIONALE DE L'AUTOMOBILE

00458 19.2.74

INTERNATIONALE

Form of recognition in accordance with Appendix J to the International Sporting Code.

国際スポーツ法典付則J項及びJAF国内競技車両規則に従った公認書式。

Manufacturer NISSAN MOTOR CO., LTD.  
製造会社名

Serial No of chassis 製造開始シヤシー型式番号 H(L)GC110-000001

engine 製造開始エンジン型式番号 L24-000001

Recognition is valid from 1.3.1974

The manufacturing of the model described in this recognition form was started on JUL. 1972 and the minimum production of 5,000 identical cars, in accordance with the specifications of this form was reached on MAR. 1973

Cylinder-capacity 総排気量	Reciprocation 2,393 cm <sup>3</sup> 146.1 cu.in. シリンダ容積	Special	cm <sup>3</sup>	cu.in.
		特殊		
Model 型式及び通称名	H(L)GC110	DATSUN 240K GT HARDTOP		
Manufacturer	NISSAN			
Manufacturer	NISSAN			
List				

Photograph A, 3/4 view of car from front 写真A、全体写真(斜め前方)



The vehicle described in this form has been subject to the following amendments

Variants

on	19	rec No	List
on	19	rec No	List
on	19	rec No	List
on	19	rec No	List
on	19	rec No	List


Normal evolution of the type

on	19	rec No	List
on	19	rec No	List
on	19	rec No	List
on	19	rec No	List
on	19	rec No	List

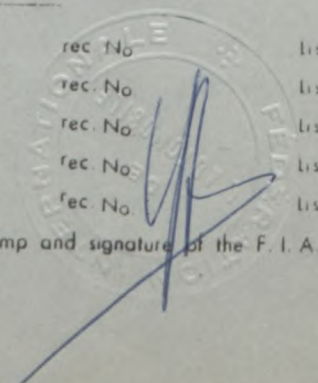
Stamp and signature of the JAF

JAF公認印及び署名

難波靖彦  
Yasuharu Nanba



Stamp and signature of the F. I. A.





Make NISSAN

Model H(L)GC110  
型式

J.A.F.公認番号 T-209

F.I.A. Rec. No. 5558

IMPORTANT - the underlined items must be stated in two measuring systems, one of which must be the metric system. See conversion table hereafter.

**CAPACITIES AND DIMENSIONS**

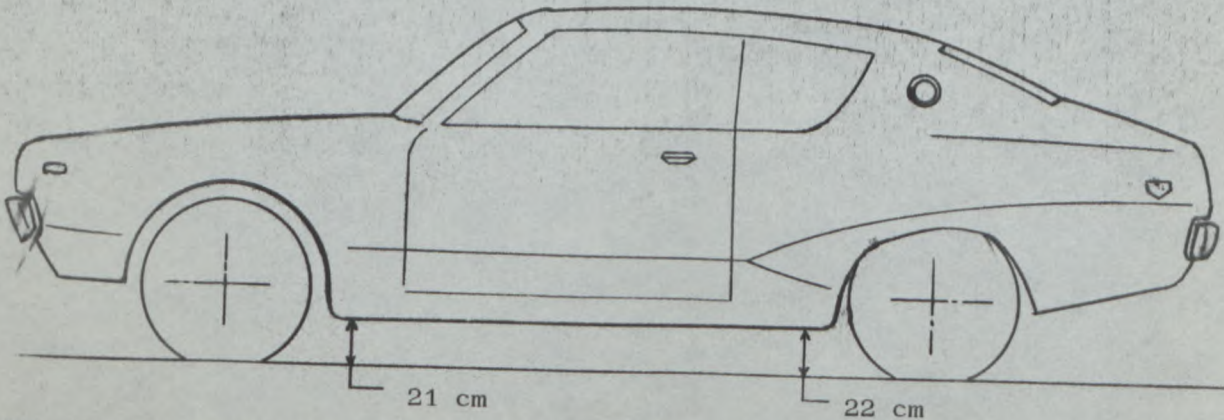
仕様諸元

1. <u>Wheelbase</u> ホイールベース	261.0	cm	102.8	inches
2. <u>Front track</u> トレッド(前)	136.0	cm	53.5	inches *
3. <u>Rear track</u> トレッド(後)	134.0	cm	52.8	inches *
4. Overall length of the car 全長	446.0	cm		inches
5. Overall width of the car 全幅	162.5	cm		inches
6. Overall height of the car 全高	138.5	cm		inches
7. <u>Capacity of fuel tank</u> (reserve included) 燃料タンク容量	14.5	Gallon US	55	ltrs Gallon Imp.
8. Seating capacity 定員	5			
9. <u>Weight, total weight of the car with normal equipment, water, oil and spare wheel but without fuel nor repair tools:</u> 車両重量(冷却水、オイル、スペアタイヤを含む標準状態の車両重量、但し燃料、車載工具を除く)	1,130	kg	2,494	lbs cwt

\* Differences in track caused by the use of other wheels with different rim widths must be stated when recognition is requested for the wheels concerned.

Specify ground clearance in relation to the track and give drawing of two fixed points of the vehicle's structure at which measurements are taken.

These ground clearance dimensions are only for information when checking the track and can in no way affect the eligibility of the car.



Width of the car measured in the vertical plane passing through the axle of the wheels.

車軸上の車体幅

Front フロント	162.0	cm	Rear リヤ	162.5	cm
---------------	-------	----	------------	-------	----

**CONVERSION TABLE**

1 inch / pouce	2.54	cm	1 quart US	0.9464	ltrs
1 foot / pied	30.4794	cm	1 pint (pt)	0.568	ltrs
1 square inch / pouce carre	6.452	cm <sup>2</sup>	1 gallon Imp.	4.546	ltrs
1 cubic inch / pouce cube	16.387	cm <sup>3</sup>	1 gallon US	3.785	ltrs
1 pound / livre (lb)	453.593	gr.	hundred weight (cwt)	50.802	kg





Make NISSAN

Model H(L)GC110  
型式

J.A.F公認番号 T-209  
F.I.A. Rec. No. 5558

**CHASSIS AND COACHWORK** (Photographs A, B and C)

シャーシー、ボデー

- 20. Chassis/body construction : ~~Separate~~ unitary construction  
シャーシー/ボデーの構造 ~~セパレート~~ 一体構造
- 21. Unitary construction, material (s) Steel  
一体構造の場合その材質
- 22. Separate constructions: material(s) of chassis  
セパレート構造の場合その材質
- 23. Material (s) of coachwork  
ボデーの材質
- 24. Number of doors 2 Material (s) Steel  
ドアの数 材質
- 25. Material (s) of bonnet Steel  
ボンネットの材質
- 26. Material (s) of boot lid Steel  
トランクリッドの材質
- 27. Material (s) of rear-window Glass  
リヤウインドシールドの材質
- 28. Material (s) of windscreen Glass (Laminated)  
フロントウインドシールドの材質
- 29. Material (s) of front-door windows Glass  
フロントドアウインドーの材質
- 30. Material (s) of rear-door windows Glass  
リヤドアウインドーの材質
- 31. Sliding system of door windows Vertical. manual  
ドアウインドーの開閉方式
- 32. Material (s) of rear-quarter light Glass  
リヤクォーターウインドーの材質

**ACCESSORIES AND UPHOLSTERY**

アクセサリ

- 38. Interior heating : yes - ~~XXXX~~
- 39. Air-conditioning : ~~XXXX~~ - no
- 40. Ventilation : yes - ~~XXXX~~
- 41. Front seats, type of seats and upholstery Separate, Vinyl
- 42. Weight of front seat (s), complete with supports and rails, out of the car :  
16 x 2 kg lbs
- 43. Rear seats, type of seats and upholstery Bench, Vinyl
- 44. Front bumper, material (s) Steel Weight 6.0 kg lbs  
フロントバンパーの材質 重量
- 45. Rear bumper, material (s) Steel Weight 4.5 kg lbs  
リヤバンパーの材質 重量

**WHEELS**

ホイール

- 50. Type Pressed steel  
形式
- 51. Weight (per wheel, without tyre) 7.0 kg lbs  
重量
- 52. Method of attachment 4 Nuts  
取付け方法
- 53. Rim diameter 356 mm 14.0 inches  
リム径
- 54. Rim width 127 mm 5.0 inches  
リム幅

**STEERING**

ステアリング

- 60. Type Recirculating ball  
形式
- 61. Servo-assistance : ~~YES~~ - no  
パワーステアリング ~~YES~~ - 無
- 62. Number of turns of steering wheel from lock to lock 4.0  
ロックツーロック
- 63. In case of servo-assistance





Make NISSAN

Model H(L)GC110  
型式

**SUSPENSION**

サスペンション

- |   |                                     |
|---|-------------------------------------|
| 70. Front suspension (photogr. D), type<br>フロントサスペンションの形式 | Mc. Pherson                         |
| 71. Type of spring<br>スプリングの種類                            | Coil                                |
| 72. Stabiliser (if fitted)<br>スタビライザーの形式                  | Torsion bar                         |
| 73. Number of shockabsorbers 2<br>ショックアブソーバーの数            | 74. Type Hydraulic Telescopic<br>形式 |
| 78. Rear suspension (photogr. E), type<br>リヤサスペンションの形式    | Trailing arm                        |
| 79. Type of spring<br>スプリングの種類                            | Coil                                |
| 80. Stabiliser (if fitted)<br>スタビライザーの形式                  |                                     |
| 81. Number of shockabsorbers 2<br>ショックアブソーバーの数            | 82. Type Hydraulic Telescopic<br>形式 |

**BRAKES (photographs F and G)**

ブレーキ

- |   |           |
|---|-----------|
| 90. System<br>作動方式                                      | Hydraulic |
| 91. Servo-assistance (if fitted), type<br>サーボアシスタンスの形式  | Vacuum    |
| 92. Number of hydraulic master cylinders<br>マスターシリンダーの数 | 1         |

	FRONT フロント		REAR リヤ	
93. Number of cylinders per wheel ホイール当りのシリンダー数	2		1	
94. Bore of wheel cylinder (s) ホイールシリンダーの内径	54.0	mm	22.2	mm
<b>Drum Brakes</b> ドラムブレーキ				
95. Inside diameter ドラムの内径		mm	229	mm
96. Length of brake linings ライニングの長さ		mm	220	mm
97. Width of brake linings ライニングの幅		mm	40	mm
98. Number of shoes per brake ブレーキ当りのシューの数			2	
99. Total area per brake 1ブレーキ当りの総摩擦面積		mm <sup>2</sup>	sq. in. 17,600	mm <sup>2</sup> sq. in.
<b>Disc brakes</b> ディスクブレーキ				
100. Outside diameter ディスクの外径	254	mm		mm
101. Thickness of disc ディスクの厚さ	13	mm		mm
102. Length of brake linings パッドの長さ	75	mm		mm
103. Width of brake linings パッドの幅	52	mm		mm
104. Number of pads per brake ブレーキ当りのパッドの数	2			
105. Total area per brake 1ブレーキ当りの総摩擦面積	7,800	mm <sup>2</sup>	sq. in.	mm <sup>2</sup> sq. in.





Make NISSAN

Model H(L)GC110  
型式

J-A-F公認番号 T-209  
F.I.A. Rec. No. 5558

ENGINE (photographs J and K) \*\*

- 130. Cycle 4
- 131. Number of cylinders 6
- 132. Cylinder arrangement In-line
- 133. Bore 83.0 mm 3.27 in.
- 134. Stroke 73.7 mm 2.90 in.
- 135. Capacity per cylinder 399.0 cm<sup>3</sup> 24.35 cu. in.
- 136. Total cylinder-capacity 2,394 cm<sup>3</sup> 146.10 cu. in.
- 137. Material (s) of cylinder block Cast-Iron
- 138. Material (s) of sleeves (if fitted)
- 139. Cylinder-head, material (s) Al-Cast Number fitted 1
- 140. Number of inlet ports 6
- 141. Number of exhaust ports 6
- 142. Compression ratio 8.5
- 143. Volume of one combustion chamber 53.2 cm<sup>3</sup> cu. in.
- 144. Piston, material Aluminum alloy
- 145. Number of rings 3
- 146. Distance from gudgeon pin centre line to highest point of piston crown 38 mm inches
- 147. Crankshaft : ~~cast~~ / stamped (Steel)
- 148. Type of crankshaft : integral ~~xxxx~~ / ~~xxxx~~
- 149. Number of crankshaft main bearings 7
- 150. Material of bearing cap Cast-iron
- 151. System of lubrication : ~~dry sump~~ / oil in sump
- 152. Capacity, lubricant 5.7 ltrs pts quarts US
- 153. Oil cooler : ~~xxxx~~ / no
- 154. Method of engine cooling Water
- 155. Capacity of cooling system 9.5 ltrs pints quarts US
- 156. Cooling fan (if fitted), dia. 350 mm inches
- 157. Number of blades of cooling fan 4

Bearings \*\*

- 158. Crankshaft main, type Plain Dia. 55 mm in.
- 159. Connecting rod big end, Plain Dia. 50 mm in.

Weights \*\*

- 160. Flywheel (clean) 9.9 kg lbs
- 161. Flywheel with clutch (all turning parts) 17.2 kg lbs
- 162. Crankshaft 19.3 kg lbs
- 163. Connecting rod 0.63 kg lbs
- 164. Piston with rings and pin 0.47 kg lbs

\*\* for additional information concerning Wankel rotary engines see page 15, 16  
ロータリーエンジンは15、16頁参照





Make NISSAN

Model H(L)GC110  
型式

J.A.F. 公認番号 T-209  
F.I.A. Rec. No 5558

**FOUR STROKE ENGINES** 4サイクルエンジン

- 170. Number of camshafts カムシャフトの数
- 172. Type of camshaft drive カムシャフトの駆動方式 Chain
- 173. Type of valve operation バルブの作動方式 Rocker arm

171. Location of camshafts カムシャフトの位置 Cylinder head

**INLET** (see page 8) 吸気系

- 180. Material of inlet manifold マニホールドの材質 Aluminum alloy
- 181. Diameter of valves バルブの径 38 mm
- 182. Max. valve lift バルブリフト 10 mm 0.43 in.
- 184. Type of spring バルブスプリングの種類 Coil
- 186. Tappet clearance for checking timing (cold) バルブ開き始め
- 187. Valves open at (with tolerance for tappet clearance indicated) バルブ閉じ終り B.T.D.C  $8^{\circ} \pm 3^{\circ}$
- 188. Valves close at (with tolerance for tappet clearance indicated) エアークリーナーの形式 Dry
- 189. Air filter, type

- 183. Number of valve springs バルブスプリングの数 2
- 185. Number of valves per cylinder シリンダー当りのバルブの数 1
- 186. Tappet clearance for checking timing (cold) 0.20 mm

**EXHAUST** (see page 8) 排気系

- 195. Material of exhaust manifold マニホールドの材質 Cast-iron
- 196. Diameter of valves バルブの径 33 mm
- 197. Max. valve lift バルブリフト 10 mm 0.43 in.
- 199. Type of spring バルブスプリングの種類 Coil
- 201. Tappet clearance for checking timing (cold) バルブ開き始め
- 202. Valves open at (with tolerance for tappet clearance indicated) バルブ閉じ終り
- 203. Valves close at (with tolerance for tappet clearance indicated) B.B.D.C  $54^{\circ} \pm 3^{\circ}$

- 198. Number of valve springs バルブスプリングの数 2
- 200. Number of valves per cylinder シリンダー当りのバルブの数 1
- 201. Tappet clearance for checking timing (cold) 0.25 mm
- 202. Valves open at (with tolerance for tappet clearance indicated) A.T.D.C  $10^{\circ} \pm 3^{\circ}$
- 203. Valves close at (with tolerance for tappet clearance indicated)

**CARBURETION** (photograph N) 気化器

- 210. Number of carburetors fitted キャブレターの数 1
- 212. Make 製造会社 HITACHI
- 214. Number of mixture passages per carburettor キャブレター当りのバルブ数 2
- 215. Flange hole diameter of exit port of carburettor キャブレター出口内径 32 & 34 mm
- 216. Minimum dimensions of mixture passage (s) of carburettor (minimum diameter) シリンダーの最小寸法 (24 & 28 mm)

- 211. Type 形式 Down draft
- 213. Model 型式 DAF 342

**INJECTION** (if fitted) 燃料噴射

- 220. Make of pump ポンプの製造会社
- 222. Model or type of pump ポンプの型式
- 224. Location of injectors ノズルの位置
- 225. Minimum diameter of inlet pipe 吸気管の最小径

- 221. Number of plungers プランジャーの数
- 223. Total number of injectors ノズルの総数

\*1 for additional information concerning two-stroke engines and super-charged engines see page 14. 2サイクルエンジン、過給機付エンジンは14頁参照

\*\* for additional information concerning Wankel rotary engines see page 15, 16. ロータリーエンジンは15, 16頁参照





Make NISSAN

Model H(L)GC110  
型式

J·A·F公認番号 T-209  
F.I.A. Rec. No. 5558

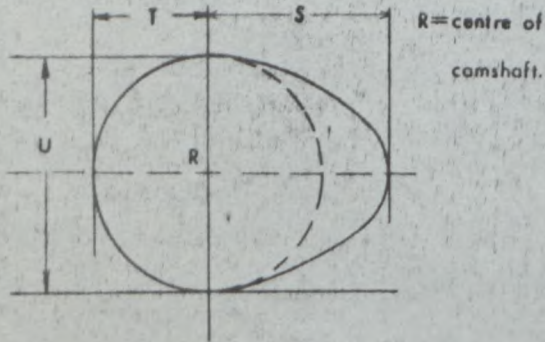
**ENGINE ACCESSORIES**

- エンジン補機
230. Fuel pump : mechanical ~~asynchronous electric~~  
燃料ポンプ 機械式 ~~電気式~~
232. Type of ignition system Make & break  
点火方式
234. No. of ignition coils 1  
コイルの数
236. Generator, type: ~~dynamo~~/alternator-number fitted 1  
発電機 交流 数
238. Voltage of generator 12 volts  
発電機電圧
240. Location Engine room  
バッテリー位置
241. Voltage of battery 12 volts  
バッテリー電圧
231. No. fitted 1  
ポンプの数
233. No. of distributors 1  
ディストリビューターの数
235. No. of spark plugs per cylinder/~~rotor~~ 1  
シリンダー当りのプラグ数 ~~ローターの数~~
237. Method of drive V-belt  
駆動方式
239. Battery, number 1  
バッテリーの数

**ENGINE AND CAR PERFORMANCES** (as declared by manufacturer in catalogue)

250. Max. engine output 130 b.h.p.(type of horsepower: SAE ) at 5,600 rpm
251. Maximum rpm 6,500 output at that figure 120 b.h.p
252. Maximum torque 20.0 kgm at 3,600 rpm
253. Maximum speed of the car 180 km/hour miles / hour

255. Cam profile  
カムプロフィール



Inlet cam

Dimension	Value	Unit	Value	Unit
S	23.5	mm	0.93	inches
T	16.5	mm	0.65	inches
U	33.0	mm	1.30	inches

Exhaust cam

Dimension	Value	Unit	Value	Unit
S	23.9	mm	0.94	inches
T	16.5	mm	0.65	inches
U	33.0	mm	1.30	inches





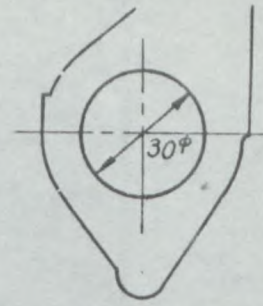
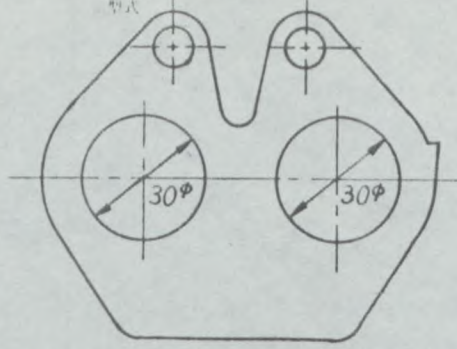
Make NISSAN

Model H(L)GC110

J.A.F.公認番号 T-209  
F.I.A. Rec. No. 5558

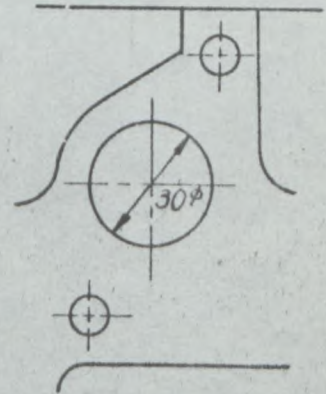
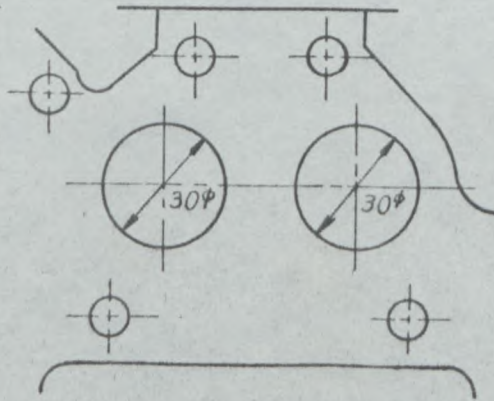
Drawing inlet manifold ports, side of cylinder-head/~~working~~ scale or dimensions and manufacturing tolerance.

吸気マニホールドのポート (シリンダーヘッド側)



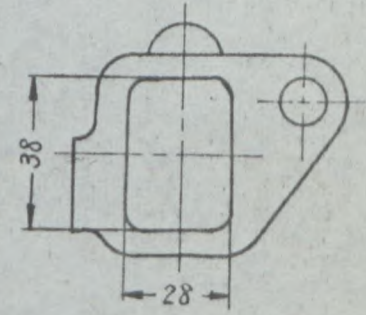
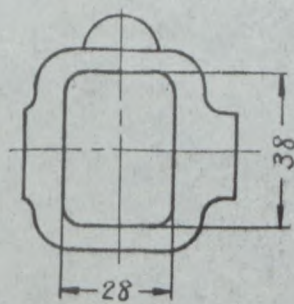
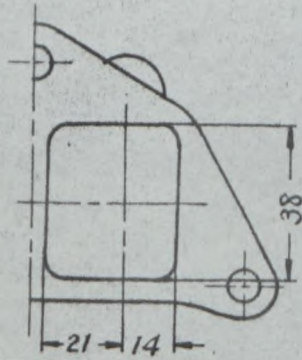
Drawing of entrance to inlet part of cylinder-head/~~working~~ scale or dimensions and manufacturing tolerance.

シリンダーヘッドの吸気ポート (吸気マニホールド側)



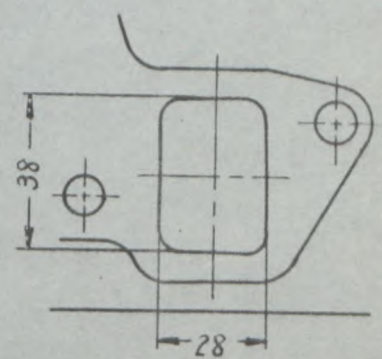
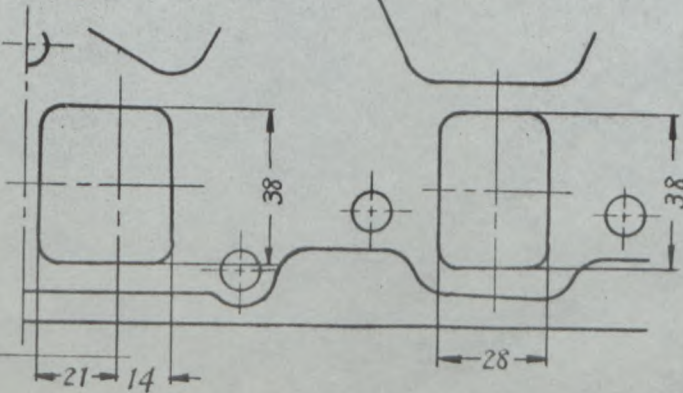
Drawing exhaust manifold ports, side of cylinder-head/~~working~~ scale or dimensions and manufacturing tolerance.

排気マニホールドのポート (シリンダーヘッド側)



Drawing of exit to exhaust port of cylinderhead/~~working~~ Indicate scale or dimensions and manufacturing tolerance.

シリンダーヘッドの排気ポート (排気マニホールド側)



Unit: mm





Make NISSAN

Model H(L)GC110

J.A.F. 記号番号 T-209  
F.I.A. Rec. No. 5558

**DRIVE TRAIN**

**CLUTCH**

- 260 Type of clutch 形式 Dry plate
- 261 No. of plates フリクションプレート上の数 1
- 262 Dia. of clutch plates 径 mm 227 inches
- 263 Dia. of flywheels outside 径 mm 225 in.
- 264 Method of operating clutch 方式 Hydraulic

**GEAR BOX** (photograph H)

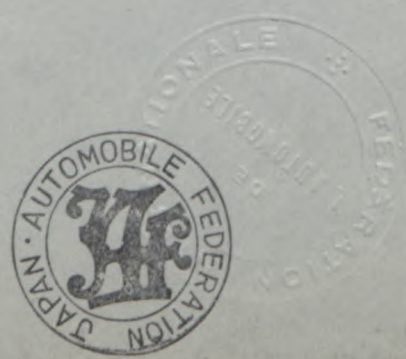
- 270 Manual type make 自動方式 形式 NISSAN
- 271 Method of operation 自動方式 Mechanical
- 272 No. of gear-box ratios forward 前進 4
- 273 Synchronized forward ratios 1, 2, 3 & 4.
- 274 Location of gear shift フロア
- 275 Automatic make 形式 NISSAN
- 276 type 3N71
- 277 Location of gear-shift フロア

277	Manual 自動		Automatic 自動		Alternative manual, automatic 自動 自動			
	Ratio 比率	No. teeth 歯数	Ratio 比率	No. teeth 歯数	Ratio 比率	No. teeth 歯数	Ratio 比率	No. teeth 歯数
1	3.59	$\frac{32}{21} \times \frac{33}{14}$	2.46					
2	2.25	$\frac{32}{21} \times \frac{28}{19}$	1.46					
3	1.42	$\frac{32}{21} \times \frac{26}{28}$						
4	1.00							
5								
6								
reverse	3.66	$\frac{32}{21} \times \frac{23}{15} \times \frac{36}{23}$						

- 278 Overdrive, type 形式
- 279 Forward gears on which overdrive can be selected 自動可能前進歯数
- 280 Overdrive ratio 自動比率

**FINAL DRIVE**

- 290 Type of final drive 形式 Hypoid gear
- 291 Type of differential 差動機形式 Bevel gear
- 292 Type of limited slip differential (if fitted) 形式
- 293 Final drive ratio 比率 3.55 3.90
- Number of teeth 歯数 39/11 39/10





Make NISSAN

Model H(L)GC110  
型式

J.A.F.公認番号 T-209  
F.I.A. Rec. No. 5558

Optional equipment affecting preceding information. This to be stated together with reference number.  
オプション:

The following items have been added.

ENGINE

* Thickness of head gasket when compressed		1.2	mm
** Reboring dimentions		0.15	mm
133. <u>Max bore</u>	83.3	mm	3.28 in.
135. <u>Max capacity per cylinder</u>	401.67	cm <sup>3</sup>	24.510 cu.in.
136. <u>Max total, cylinder-capacity</u>	2,410.0	cm <sup>3</sup>	147.06 cu.in.





Photograph

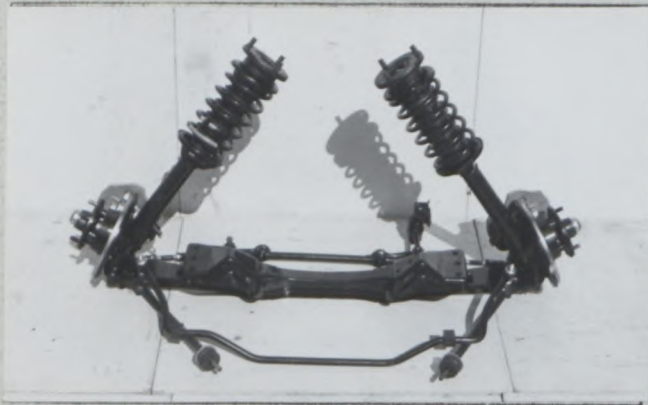
B, 3/4 view of car from rear 全体写真(斜め後方)



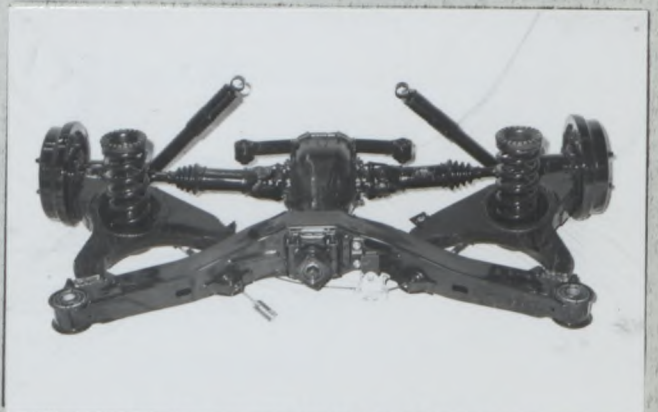
C, Interior view of car through driver's door (open or removed) with dashboard 運転席附近



D, Front axle complete, removed from car. Without wheels. フロントサスペンション



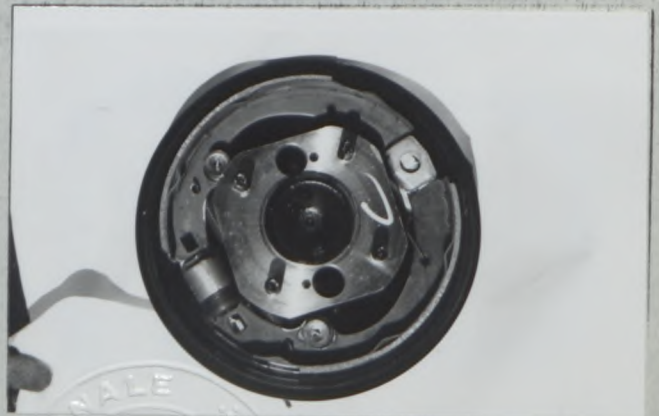
E, Rear axle complete without wheels, removed from car. リヤサスペンション



F, Front brake. ~~disc with caliper(s)~~ disc with caliper(s) フロントブレーキ



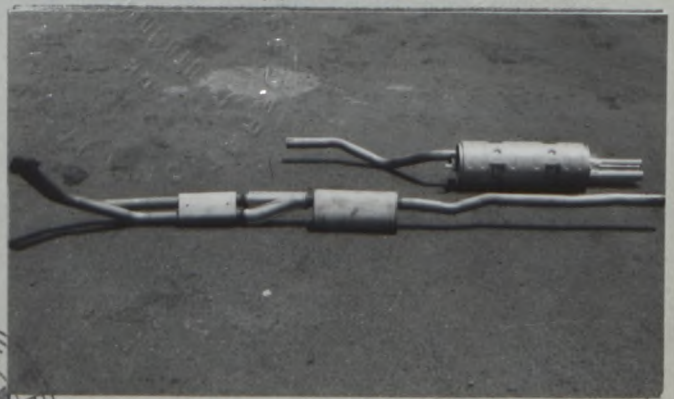
G, Rear brake. drum removed ~~disc with caliper(s)~~ リヤブレーキ



H, Gear-box, view from side トランスミッション



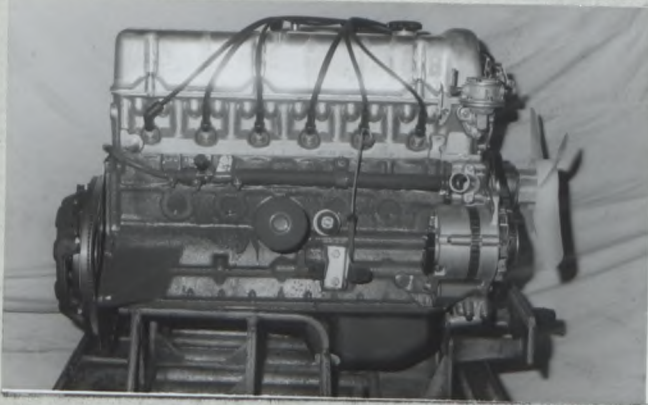
I, Silencer + exhaust pipes after exhaust manifold 排気系



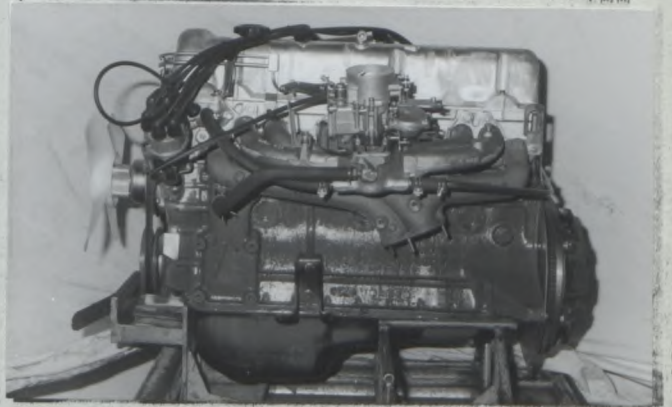


Photograph

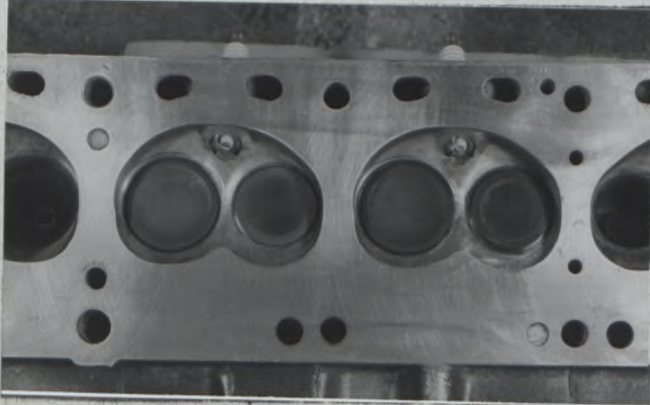
J, Engine unit out of car, from right. With clutch and accessories but without air filter nor gear-box. エンジン右側面



K, Engine unit out of car, from left. With clutch and accessories but without gear-box nor air filter. エンジン左側面



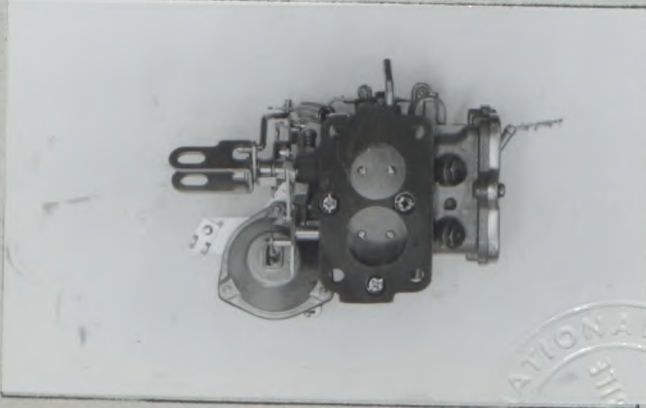
L, Combustion chamber 燃焼室 / Piston crown



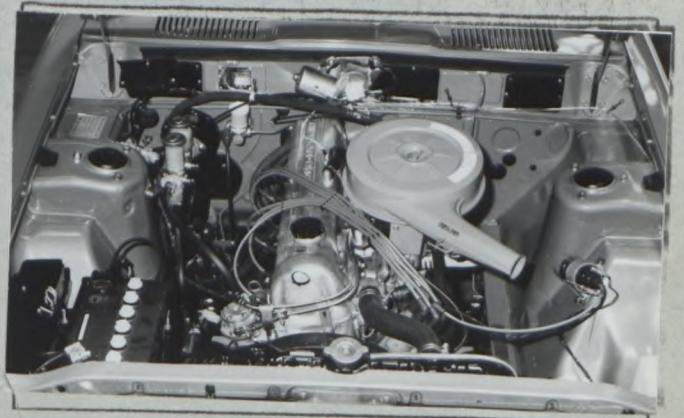
M, Piston crown ピストンクラウン / Piston crown



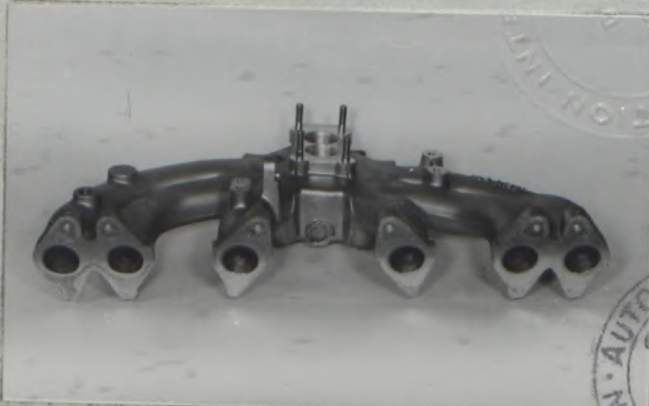
N, Carburettor (view from side of manifold) 気化器



O, Engine in car with all accessories, bonnet open or removed. エンジンルーム



P, Inlet manifold 吸気マニホールド



Q, Exhaust manifold 排気マニホールド



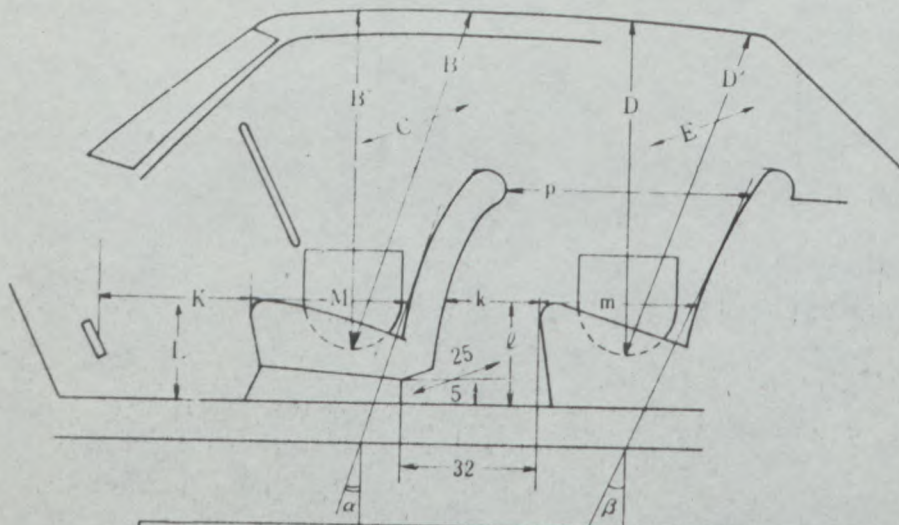
43\*2





DIMENSIONS OF INTERIOR  
(Conform to Art. 253 b of Appendix J)

For four seaters  
4座席

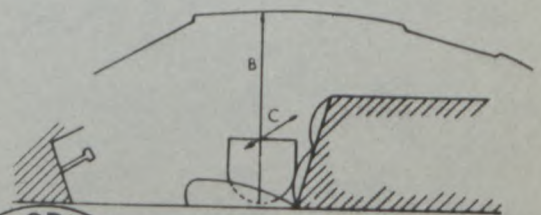


Minimum Dimensions (cm)							
B	B'	a	C	D	D'	$\beta$	E
89	96	15	133	88	95	27	133

Minimum Dimensions (cm)								
l.	l	M	m	k+m	p	k	k+l+m	K+L+M
30	36	45	48	75	83	27	111	122
0.9l. = 27.0		0.85M	38.3	0.85(k+m)	63.8	(15)	(95)	(120)

For two seaters:  
2座席

Minimum Dimensions	
B	C
cm	cm







JAPAN AUTOMOBILE FEDERATION

COMMISSION SPORTIVE INTERNATIONALE  
00458 19.2.74  
INTERNATIONALE

社団法人自動車連盟

J.A.F. 公認番号 T-209  
発効年月日 1973年7月31日  
F.I.A. Homol. No 5558  
1/IV

FEDERATION INTERNATIONALE DE L'AUTOMOBILE

Form of recognition accordance with  
Appendix J to the International Sporting Code.

国際スポーツ法典付則J項及びJ.A.F.国内競技車両規則に従った公認書式。

Make NISSAN MOTOR CO., LTD.

製造会社名

Model

型名及び通称名

H(L)GC110

DATSUN 240K GT HARDTOP

Modification's application starts with serial

No.

chassis

適用シャーシ型式番号

H(L)GC110-000001

engine

適用エンジン型式番号

L24-000001

Application of this amendment started the

適用年月日

JUL. 1972

Commercial denomination after application of modifications

The modifications are to be considered as: Variant / 変型 /

Date amendment is valid from 1.3.1974

List

Description of amendment 内容

5 SPEED GEAR BOX (Photograph II)

270. Manual type, make NISSAN

Method of operation Mechanical

271. No. of gear-box ratios forward

5

272. Synchronized forward ratios

1, 2, 3, 4 & 5

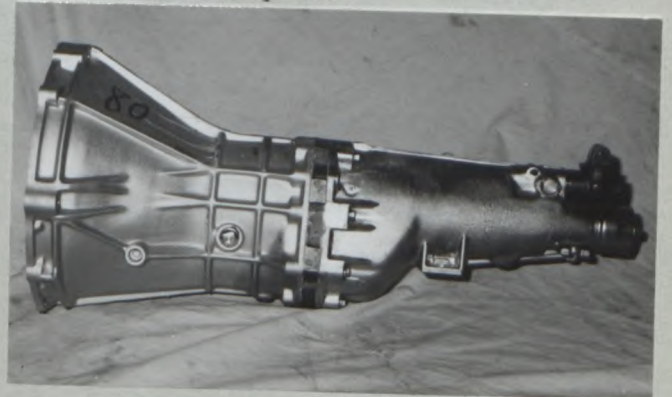
274. Location of gear-shift

Floor

277	Manual	
	Ratio	No. teeth
1	3.32	$\frac{31}{22} \times \frac{33}{14}$
2	2.08	$\frac{31}{22} \times \frac{28}{19}$
3	1.31	$\frac{31}{22} \times \frac{26}{28}$
4	1.00	
5	0.86	$\frac{31}{22} \times \frac{19}{31}$
reverse	3.38	$\frac{31}{22} \times \frac{23}{15} \times \frac{36}{23}$

Photograph

II, Gear box (5speed)



Stamp and signature of the JAF

JAF公認印及び署名

難波靖彦

Yasuharu Nanba



Stamp and signature of the F.I.A.

