



FEDERATION INTERNATIONALE
DU SPORT AUTOMOBILE

FISA Homologation No

N - 5509

FN-045

1994年2月28日

FICHE COMPLEMENTAIRE D'HOMOLOGATION EN GROUPE "N"
COMPLEMENTARY HOMOLOGATION FORM IN GROUP "N"

Véhicule: Constructeur DAIHATSU MOTOR CO., LTD Modèle et type CHARADE GTI (G201)
Vehicle: Manufacturer _____ Model and type (CHARADE DETOMASO)

Homologation valable à partir du 01 AVR. 1994
Homologation valid as from _____

IMPORTANT:

La présente fiche comporte toutes informations complémentaires à la fiche d'homologation de base Gr.A pour la participation du véhicule en Gr.N. En cas d'information contradictoire, seule l'information figurant sur la présente fiche est à prendre en considération pour le Gr.N.

IMPORTANT:

This form includes all the additional information to the basic Gr.A homologation form for the participation of the vehicle in Gr.N. In the case of contradictory information, only the information appearing on the present form is to be taken into consideration for Gr.N.

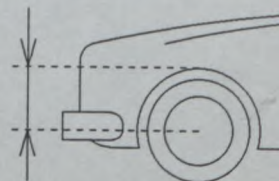
1. GENERALITES / GENERAL

103. Cylindrée Cylindrée corrigée
Cylinder capacity 1589.5 cm³ Corrected cylinder capacity XXXX × XXXX = XXXX cm³

2. DIMENSIONS, POIDS / DIMENSIONS, WEIGHT

201. Poids minimum
Minimum weight 836 kg

205. Hauteur minimum centre moyeu de roue /
ouverture du passage de roue Avant 352 mm
Minimum height center hub /
wheel arch opening Arrière 338 mm



207. Voie maximum a) Avant b) Arrière
Maximum track Front 1405 mm Rear 1410 mm



[Handwritten signature]

FEDERATION INTERNATIONALE
DE L'AUTOMOBILE
8, Place de la Concorde, 8
75008 PARIS

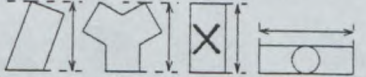
Marque DAIHATSU Modèle G 2 0 1
Make DAIHATSU Model G 2 0 1

FISA Homologation No

N - 5 5 0 9

FN-045

3. MOTEUR/ENGINE

302. Nombre de supports 4 308. Volume minimum total d'une chambre de combustion 45.1 cm³
Number of supports 4 Total minimum volume of a combustion chamber 45.1 cm³
309. Volume minimum d'une chambre de combustion dans la culasse 40.9 cm³
Minimum volume of a combustion chamber in the cylinder head 40.9 cm³
310. Rapport volumétrique maximum (par rapport à l'unité) 9.8 :1
Maximum compression ratio (in relation with the unit) 9.8 :1
311. Hauteur minimum du bloc-cylindres 244 mm selon dessin : 
Minimum height of the cylinder block 244 mm according to drawing :
313. Chemises b) Matériau CAST IRON
Sleeves Material CAST IRON
317. Piston a) Matériau ALUMINIUM ALLOY
Piston Material ALUMINIUM ALLOY
- b) Nombre de segments 3 c) Poids minimum 320 g
Number of rings 3 Minimum weight 320 g
- d) Distance de la médiane de l'axe au sommet du piston 30.7 ±0.1mm
Distance from gudgeon pin center line to highest point of piston crown 30.7 ±0.1mm
- e) Distance(±) entre le sommet du piston au PMH et le plan de joint du bloc cylindre 0.5 ±0.15mm
Distance(±) between the top of the piston at TDC and the gasket plane of the cylinder block 0.5 ±0.15mm
- f) Volume de l'évidement du piston 1.8 ±0.5cm³
Piston groove volume 1.8 ±0.5cm³

AA) Piston
Piston



319. Vilebrequin i) Diamètre maximum des manetons 45.0 mm
Crankshaft Maximum diameter of crank pins 45.0 mm
321. Culasse c) Hauteur minimum 93 mm
Cylinderhead Minimum height 93 mm
- d) Endroit de la mesure FROM TOP TO BOTTOM OF THE CYLINDERHEAD
Where measured FROM TOP TO BOTTOM OF THE CYLINDERHEAD
322. Epaisseur du joint de culasse serré 1.3 ±0.2mm
Thickness of tightened cylinderhead gasket 1.3 ±0.2mm



Marque
Make DAIHATSU

Modèle
Model G 2 0 1

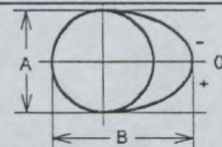
FISA Homologation No

N - 5 5 0 9

FN-045

325. Arbre à cames e) Diamètre des paliers
Camshaft Diameter of bearings 27.0 mm

g) Dimensions de la came Admission A= 28.0 ±0.1mm
Cam dimensions Inlet B= 33.5 ±0.1mm
Echappement A= 28.0 ±0.1mm
Exhaust B= 33.3 ±0.1mm



326. Distribution a) Jeu théorique de distribution admission échappement
Timing Theoretical clearance for valve timing inlet 0.20 mm exhaust 0.20 mm

d) Levée de came en mm (arbre démonté)
Cam lift in mm (dismounted camshaft) (dessin / drawing Art. 325)

ADMISSION / INTAKE				ECHAPPEMENT / EXHAUSTE			
Angle de rotation en degrés Rotation angle in degrees	Levée en mm (±0.2mm) Lift in mm (±0.2mm)	Angle de rotation en degrés Rotation angle in degrees	Levée en mm (±0.2mm) Lift in mm (±0.2mm)	Angle de rotation en degrés Rotation angle in degrees	Levée en mm (±0.2mm) Lift in mm (±0.2mm)	Angle de rotation en degrés Rotation angle in degrees	Levée en mm (±0.2mm) Lift in mm (±0.2mm)
0	5.5			0	5.3		
-5	5.5	+5	5.5	-5	5.2	+5	5.2
-10	5.4	+10	5.4	-10	5.1	+10	5.1
-15	5.2	+15	5.2	-15	4.9	+15	4.9
-30	4.0	+30	4.1	-30	3.7	+30	3.9
-45	2.1	+45	2.4	-45	1.8	+45	2.3
-60	0.2	+60	0.4	-60	0.3	+60	0.5
-75	0.1	+75	0.2	-75	0.1	+75	0.2
-90	0	+90	0.1	-90	0	+90	0
-105	0	+105	0	-105	0	+105	0
-120	0	+120	0	-120	0	+120	0
-135	0	+135	0	-135	0	+135	0
-150	0	+150	0	-150	0	+150	0

Un décalage de l'ensemble des mesures de ±2 degrés est accepté.
A shift of ±2 degrees of the whole measurement is accepted.

e) Levée maximum des soupapes
Maximum valve lift

	Levée maximum Maximum valve lift
Admission / Intake	<u>8.0</u> ±0.2mm
Echappement / Exhaust	<u>7.5</u> ±0.2mm

avec jeu selon Art. 326. a
with clearance according to Art. 326. a



Marque DAIHATSU Modèle G 2 0 1
 Make DAIHATSU Model G 2 0 1

FISA Homologation No
N - 5 5 0 9

FN-045

327. Admission h) Nombre de ressorts par soupape
 Intake Number of springs per valve 1

i) Caractéristiques des ressorts :

Spring characteristics :

Sous une charge de 27 kg, la longueur max. du ressort est de 38 mm
 Under a load of 27 kg, the max. length of the spring is 38 mm

k) Diamètre extérieur des ressorts 26.3 ± 0.2mm l) Nombre de spires des ressorts 7.7
 External diameter of the springs 26.3 ± 0.2mm Number of spring coils 7.7

m) Diamètre du fil des ressorts 3.8 ± 0.1mm n) Longueur libre max. des ressorts 47 mm
 Diameter of spring wire 3.8 ± 0.1mm Max. free length of the springs 47 mm

328. Echappement i) Nombre de ressorts par soupape
 Exhaust Number of springs per valve 1

k) Caractéristiques des ressorts :

Spring characteristics :

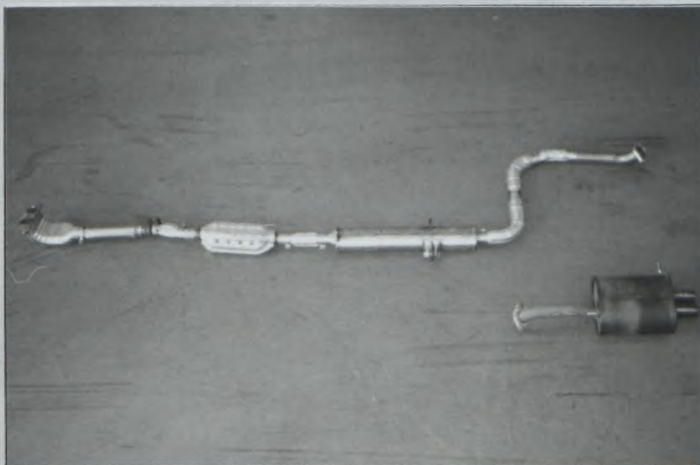
Sous une charge de 27 kg, la longueur max. du ressort est de 38 mm
 Under a load of 27 kg, the max. length of the spring is 38 mm

l) Diamètre extérieur des ressorts 26.3 ± 0.2mm m) Nombre de spires des ressorts 7.7
 External diameter of the springs 26.3 ± 0.2mm Number of spring coils 7.7

n) Diamètre du fil des ressorts 3.8 ± 0.1mm o) Longueur libre max. des ressorts 47 mm
 Diameter of spring wire 3.8 ± 0.1mm Max. free length of the springs 47 mm

p) Diamètre de tuyauterie entre collecteur et premier silencieux 49 mm ± 5%
 Diameter of pipe between manifold and first silencer 49 mm ± 5%

BB) Echappement complet
 Complete exhaust system



329. Système anti-pollution
 Anti pollution system

a)

oui	non
yes	no

b) Description

Description 3WAY CATALYTIC CONVERTER

WITH O2 FEEDBACK



FEDERATION INTERNATIONALE
 DE L'AUTOMOBILE
 8, Place de la Concorde, 8
 75008 PARIS

Marque DAIHATSU Modèle G 2 0 1
Make DAIHATSU Model G 2 0 1

FISA Homologation No

N - 5 5 0 9

FN-045

330. Système d'allumage a) Type
Ignition system Type TRANSISTORISED, MAPPED
- b) Nombre de bobines
Number of coils 1
331. Système de refroidissement Capacité
Cooling system Capacity 4.5 ℓ
332. Ventilateur de refroidissement a) Nombre b) Diamètre de l'hélice
Cooling fan Number 1 Diameter of the screw 300 mm
- c) Matériau de l'hélice d) Nombre de pales
Material of the screw POLYPROPYLENE Number of blades 5
- e) Type d'entraînement f) Ventilateur débrayable
Type of drive ELECTRICAL Automatic cut in
- | | |
|-----|----------------|
| oui | non |
| yes | no |
333. Système de lubrification c) Capacité totale d) Refroidisseur(s) d'huile
Lubrication system Total capacity 4 ℓ Oil cooler(s)
- | | |
|----------------|-----|
| oui | non |
| yes | no |
- Nombre XXXX
Number XXXX
- e) Emplacement du(des) refroidisseur(s)
Location of the cooler(s) XXXX
- f) Type du(des) refroidisseur(s)
Type of the cooler(s) XXXX



Marque DAIHATSU Modèle G 2 0 1
Make DAIHATSU Model G 2 0 1

FISA Homologation No

N - 5 5 0 9

4. CIRCUIT DE CARBURANT / FUEL CIRCUIT

FN-045

401. Réservoir Fuel tank
- d) Capacité totale Total capacity 45 ℓ
- e) Emplacement des orifices Filler hole locations REARWARD ON THE LEFTHAND
402. Pompe(s) à essence Fuel pump(s)
- a)

Electrique Electrical	Mécanique Mechanical
--------------------------	-------------------------------------
- b) Nombre Number 1
- c) Marque et type Make and type AISAN INDUSTRY IMPELLER
- d) Emplacement Location IN THE FUEL TANK
- e) Débit maximum Maximum flow 1.4 $\ell / mn \text{ \AA}$ XXXX ℓ / mn at XXXX rpm

5. EQUIPEMENT ELECTRIQUE / ELECTRICAL EQUIPMENT

501. Batterie(s) Batterie(s)
- c) Emplacement Location IN THE ENGINE COMPARTMENT
502. Génératrice(s) Generator(s)
- a) Nombre Number 1
- b) Type Type ALTERNATOR
- c) Système d'entraînement Drive system BELT
- d) Puissance nominale Nominam power 840 watts
503. Phares escamotables Retractable headlights
- a)

oui yes	non no
-----------------------	-----------
- b) Système de commande Control system XXXX



Marque DAIHATSU
 Make _____

Modèle G 2 0 1
 Model _____

FISA Homologation No

N - 5 5 0 9

6. TRANSMISSION / POWER TRAIN

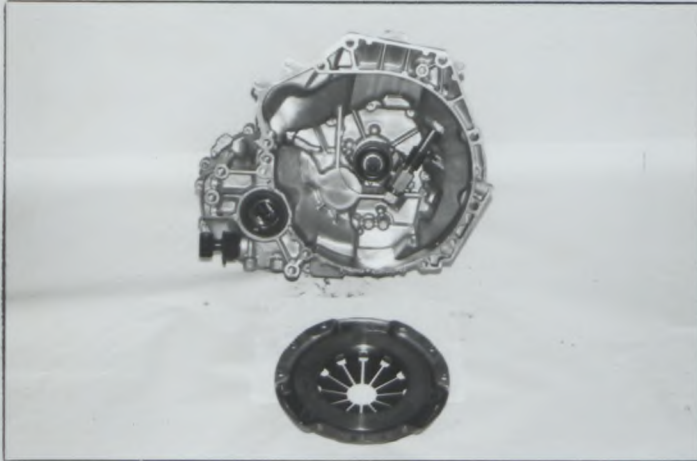
FN-045

602. Embrayage
 Clutch

a) Type
 Type DRY

d) Diamètre du(des) disque(s)
 Diameter of the plate(s) 1 9 0 ±2mm

CC) Embrayage
 Clutch



603. Boîte de vitesses
 Gearbox

h) Refroidisseur d'huile
 Oil cooler

oui	non
yes	no

Type _____
 Type XXXX

604. Boîte de transfert / différentiel central :
 Transfer box / central differential :

e) Répartition du couple : e1) Avant Arrière
 Torque distribution : Front XXXX % Rear XXXX %

e2) Nombre de dents :
 Number of teeth : XXXX

f) Type de limitation de différentiel central
 Type of central differential limitation XXXX

605. Couple final
 Final drive

	Avant / Front	Arrière / Rear								
d) Type de limitation de différentiel Type of differential limitation	WET MULTIPLE DISC CLUTCH	<u>XXXX</u>								
f) Refroidisseur d'huile Oil cooler	<table border="1"> <tr> <td>oui</td> <td>non</td> </tr> <tr> <td>yes</td> <td>no</td> </tr> </table>	oui	non	yes	no	<table border="1"> <tr> <td>oui</td> <td>non</td> </tr> <tr> <td>yes</td> <td>no</td> </tr> </table>	oui	non	yes	no
oui	non									
yes	no									
oui	non									
yes	no									
Type	<u>XXXX</u>	<u>XXXX</u>								



FEDERATION INTERNATIONALE
 DE L'AUTOMOBILE
 8, Place de la Concorde, 8
 75008 PARIS

Marque DAIHATSU
Make _____

Modèle G 2 0 1
Model _____

FISA Homologation No

N - 5 5 0 9

7. SUSPENSION / SUSPENSION

FN-045

702. Ressorts hélicoïdaux
Helical springs

Avant / Front	Arrière / Rear
STEEL	STEEL

a) Matériau
Material

703. Ressorts à lames
Leaf springs

Avant / Front	Arrière / Rear
X X X X	X X X X
X X X X	X X X X
X X X X	X X X X
X X X X	X X X X
X X X X	X X X X
X X X X	X X X X

a) Matériau de lame maîtresse
Material of main leaf

Matériau de 2ème lame
Material of 2nd leaf

Matériau de 3ème lame
Material of 3rd leaf

Matériau de 4ème lame
Material of 4th leaf

Matériau de 5ème lame
Material of 5th leaf

Matériau de lame auxiliaire
Material of auxiliary leaf

704. Barres de torsion
Torsion bars

Avant / Front	Arrière / Rear
X X X X	X X X X

c) Matériau
Material



Marque DAIHATSU
Make _____

Modèle G 2 0 1
Model _____

FISA Homologation No

N - 5 5 0 9

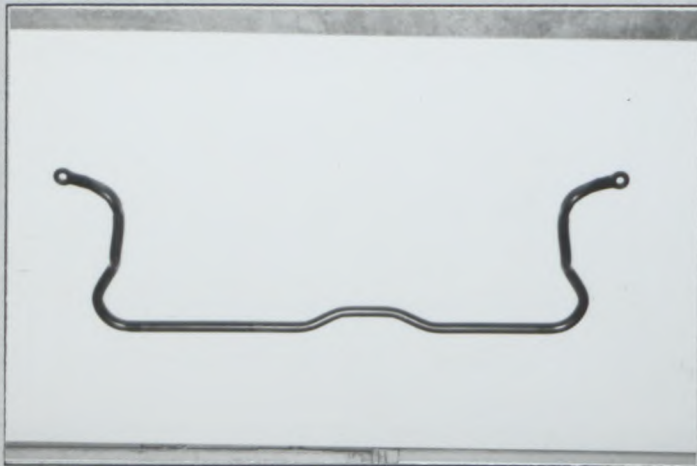
FN-045

706. Stabilisateur
Stabiliser

- a) Longueur efficace
Effective length
- b) Diamètre efficace
Effective diameter
- c) Matériau
Material

	Avant / Front	Arrière / Rear
a) Longueur efficace Effective length	<u>9 3 8 . 5</u> mm±1%	<u>9 9 7</u> mm±1%
b) Diamètre efficace Effective diameter	<u>2 1</u> mm	<u>2 3</u> mm
c) Matériau Material	<u>S T E E L</u>	<u>S T E E L</u>

XI) Dessin ou photo du stabilisateur avant
Drawing or photo of front stabiliser



XI) Dessin ou photo du stabilisateur arrière
Drawing or photo of rear stabiliser



Marque DAIHATSU Modèle G 2 0 1
 Make _____ Model _____

FISA Homologation No

N - 5 5 0 9

FN-045

8. TRAIN ROULANT / RUNNING GEAR

801. Roues
Wheels

	Avant / Front	Arrière / Rear	Secours / Spare
a) Diamètre Diameter	1 4 "	1 4 "	1 4 "
b) Largeur Width	3 5 5 mm	3 5 5 mm	3 5 5 mm
	5 "	5 "	5 "
	1 2 7 mm	1 2 7 mm	1 2 7 mm

802. Emplacement de la roue de secours
Location of the spare wheel

Behind the rear seat

EE) Roue de secours dans son emplacement
Spare wheel in its location



Marque DAIHATSU Modèle G 2 0 1
 Make DAIHATSU Model G 2 0 1

FISA Homologation No
N-5509

9. CARROSSERIE / BODYWORK

FN-045

901. Intérieur Interior c) Climatisation Air conditioning

oui	non
yes	no

d) Sièges Seats

d1) Type des sièges arrière Type of rear seats BENCH

Avant / Front	Arrière / Rear								
<table border="1" style="display: inline-table;"> <tr> <td>oui</td> <td>non</td> </tr> <tr> <td>yes</td> <td>no</td> </tr> </table>	oui	non	yes	no	<table border="1" style="display: inline-table;"> <tr> <td>oui</td> <td>non</td> </tr> <tr> <td>yes</td> <td>no</td> </tr> </table>	oui	non	yes	no
oui	non								
yes	no								
oui	non								
yes	no								

d2) Appuie-tête Headrest

d4) Siège arrière rabattable Rear seat can be folded

oui	non
yes	no

e) Plage arrière Rear ledge

oui	non
yes	no

e1) Matériau Material POLYPROPYLEN

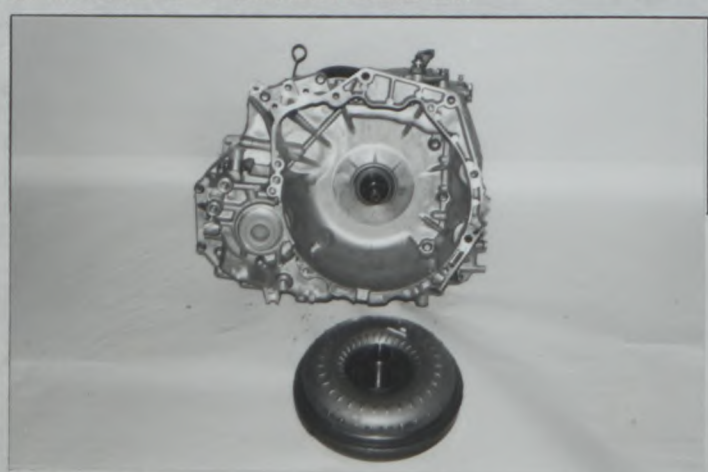
902. Extérieur Exterior n) Essuie-glace arrière Rear wiper

oui	non
yes	no

COMPLEMENTARY INFORMATION

①605 FINAL DRIVE OF AUTOMATIC GEAR-BOX
 RATIO = 3.853
 NUMBER OF TEETH = 54/53 × 87/23

②PHOTO CC) COMPLETE CLUTCH OF AUTOMATIC GEAR-BOX



FEDERATION INTERNATIONALE
 DE L'AUTOMOBILE
 8, Place de la Concorde, 8
 75008 PARIS

Marque

Make DAIHATSU

Modèle

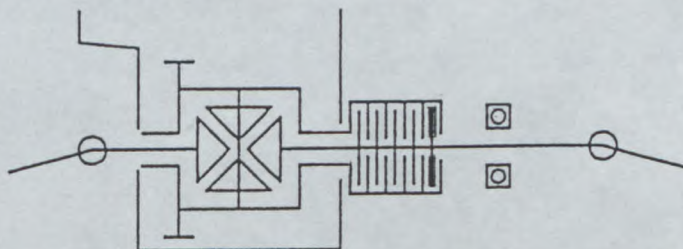
Model G 2 0 1

FISA Homologation No

N-5509

③605. d) Figure of differential limitation

FN-045





FEDERATION INTERNATIONALE
DE L' AUTOMOBILE

FIA Homologation No.

N-5509

JAPAN AUTOMOBILE FEDERATION
社団法人 日本自動車連盟

Extension No.

01/01 ER



Groupe ~~A/B/N/T1/Supertourisme~~
Group ~~Supertouring~~
グループ

JAF公認番号 FN-045 ER- 1/1

JAF発効年月日 1995年 7月31日

FICHE D'EXTENSION D'HOMOLOGATION
FORMOF HOMOLOGATION EXTENSION
追加公認書式

- ES Evolution sportive du type/Sporting evolution of the type
スポーツ進化
- ET Evolution normale du type/ Normal evolution of the type
形式の正常進化
- VE Variante de fourniture/Supply variant
供給変型
- VO Variante option/Option variant
オプション変更
- ER Erratum/Erratum
誤記訂正

Vehicule; Constructeur

Modele et type

Vehicule; Manufactureur DAIHATSU MOTOR CO., LTD
車両：製造会社名

Model and type DAIHATSU Charade GTI(G201)
モデルと型式

Homologation valable a partir du

Homologation valid as from

01 AOUT 1995

FIA公認発効年月日

Page ou ext. Page or ext. ページまたは補足	Article Article 項目	Description Description 記述
6	402	Correct error written on page-6 of the basic homologation form. Fuel pump e)Maximum flow 3.4 l /min instead of 1.4 l /min.



FEDERATION INTERNATIONALE
DE L'AUTOMOBILE

8, place de la Concorde, 75008 Paris

Services Administratifs :

8 bis, rue Boissy d'Anglas, 75008 Paris



FISA Homologation No

FEDERATION INTERNATIONALE DU SPORT AUTOMOBILE

A - 5509


JAPAN AUTOMOBILE FEDERATION 社団法人 日本自動車連盟

 Groupe
Group A/ア
グループ

JAF公認番号 JA-165

JAF公認グループ

JAF発効年月日 1994年 2月 28日

FICHE D' HOMOLOGATION CONFORME A L' ANNEXE J DU CODE SPORTIF INTERNATIONAL
HOMOLOGATION FORM IN ACCORDANCE WITH APPENDIX J OF THE INTERNATIONAL SPORTING CODE
国際スポーツ法典付則J項(及びJAF国内競技車両規則)に従った公認書式

 Homologation valable à partir du
Homologation valid as from
FISA発効年月日

01 AVR. 1994

 A) Voiture vue de 3/4 avant
Car seen from 3/4 front
左3/4が見える車体全体

 B) Voiture vue de 3/4 arrière
Car seen from 3/4-rear
右3/4が見える車体全体


1. GENERALITES / GENERAL / 一般項目

 101. Constructeur
Manufacturer
製造会社名 DAIHATSU MOTOR CO., LTD

 102. Dénomination(s) commerciale(s) - Modèle et type
Commercial name(s) - model and type
通称名 - 形式とモデル CHARADE GTI (G201)
(CHARADE DETOMASO)

 103. Cylindrée
Cylinder capacity 1589.5 cm³ Cylindrée corrigée
Corrected cylinder capacity xxxx × xxxx = xxxx cm³

 104. Mode de construction :
Type of car construction :
車体構造形式 :

a) Mode : Type : 形式 : <u>séparée</u> <u>separate</u> <u>別置</u>	monoque unitary construction モノコック
---	--

 b) matériau du châssis / coque
material of chassis / bodyshell
シャシ/車体の材質 STEEL

 105. Nombre de volumes
Number of volumes
エバ/バの数 2

 106. Nombre de places
Number of places
定員 5


 FEDERATION INTERNATIONALE
DE L'AUTOMOBILE
8, Place de la Concorde, 8
75008 PARIS

Marque
Make
会社名

DAIHATSU

Modèle
Model
型式

G 2 0 1

FISA Homologation No

A - 5 5 0 9

JAF公認番号 JA-165

2. DIMENSIONS, POIDS / DIMENSIONS, WEIGHT / 寸法, 重量

202. Longueur hors-tout
Overall length
車両全長
- 3 7 6 0 mm ± 1%
203. Largeur hors-tout
Overall width
車両全幅
Endroit de mesure
Where measured
測定箇所
- 1 6 5 0 mm ± 1%
- CENTER OF THE REAR WHEEL AXLE
204. Largeur de carrosserie
Width of bodywork
車体の幅
- a) A la hauteur de l'axe avant
At front axle
前軸上の車体幅
- 1 6 3 0 mm ± 1%
- b) A la hauteur de l'axe arrière
At rear axle
後軸上の車体幅
- 1 6 5 0 mm ± 1%
206. Empattement
Wheelbase
ホイールベース
- 2 3 9 5 mm ± 1%
209. Porte à faux
Over hang
オーバーハング
- a) Avant
Front
前
- 7 3 0 mm ± 1%
- b) Arrière
Rear
後
- 6 3 5 mm ± 1%
210. Distance "G" (volant-paroi de séparation arrière)
Distance "G" (steering wheel-rear bulkhead)
寸法 G (ステアリングホイール - リアバルクヘッド)
- 1 5 4 6 mm



Marque
Make
会社名

DAIHATSU

Modèle
Model
型式

G 2 0 1

FISA Homologation No

A-5509

JAF公認番号 JA-165

3. MOTEUR/ENGINE/エンジン

(en cas de moteur rotatif, voir Art.335 sur fiche additionnelle)
(in case of rotative engine, see Art.335 on additional form)
(ロータリ-エンジンの場合、補助書式第335項参照)

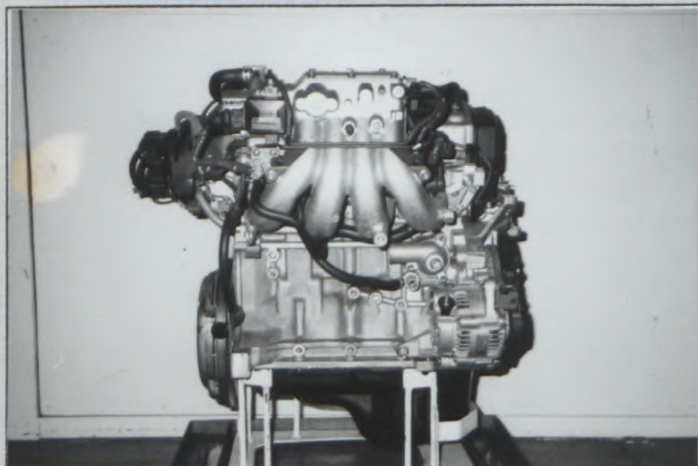
301. Emplacement et position du moteur
Location and position of the engine
エンジンの位置と向き

FRONT, TRANSVERSAL, FRONT: 8°

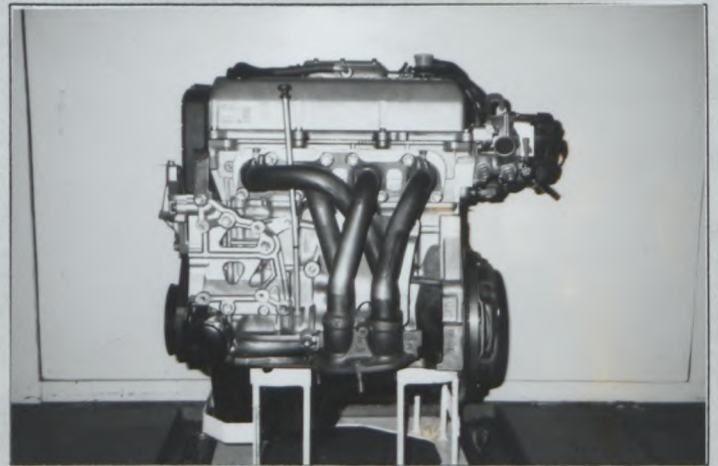
303. Cycle

Cycle
サイクル 4 (OTTO)

C) Profil droit du moteur déposé
Right hand view of dismantled engine
車両から取り外したエンジンの右側面



D) Profil gauche du moteur déposé
Left hand view of dismantled engine
車両から取り外したエンジンの左側面



E) Moteur dans son compartiment
Engine in its compartment
車両に取り付けられたエンジン



304. Suralimentation
Supercharging
過給

<input checked="" type="checkbox"/>	non
<input checked="" type="checkbox"/>	no
<input checked="" type="checkbox"/>	無

(en cas de suralimentation, voir Art.334 sur fiche additionnelle)
(in case of supercharging, see Art.334 on additional form)
(過給の場合、追加書式第334項参照)

Type et nombre de compresseurs
Type and number of compressors
圧縮機の型式と数

XXXX



FEDERATION INTERNATIONALE
DE L'AUTOMOBILE
8, Place de la Concorde, 8
75008 PARIS

Marque / Make / 会社名: DAIHATSU Modèle / Model / 型式: G 2 0 1

FISA Homologation No
A - 5 5 0 9
 JAF公認番号 JA-165

305. Nombre et disposition des cylindres / Number and layout of cylinders / シリンダ配列と数: 4, IN LINE

306. Mode de refroidissement / Type of cooling / 冷却装置: LIQUID

307. Cylindrée / Cylinder capacity / シリンダ容量: a) Unitaire / Unitary / 1気筒: 3 9 7 . 5 cm³ b) Totale / Total / 合計: 1 5 8 9 . 5

c) Totale max. autorisée / Max. total allowed / 許される最大排気量: 1 5 9 8 . 0 cm³
 INDICATION NON VALABLE EN GROUPE N / NOT VALID FOR GROUP N / グループNには有効ではない

312. Matériau du bloc - cylindre / Cylinder block material / シリンダブロックの材質: ALUMINIUM ALLOY

313. Chemises / Sleeves / シリンダ: a) oui / yes / 有: non / no / 無: c) humides / wet / 濡湿: sèches / dry / 乾式:

314. Alésage / Bore / ボア: 7 6 . 0 mm 315. Alésage maximum autorisé / Maximum bore allowed / 許される最大ボア: 7 6 . 2 mm

316. Course / Stroke / シロク: 8 7 . 6 mm INDICATION NON VALABLE EN GROUPE N / NOT VALID FOR GROUP N / グループNには有効ではない

318. Bielle / Connecting rod / シリンダロッド: a) Matériau / Material / 材質: STEEL b) Type de la tête de bielle / Big end type / シリンダヘッド形式: SEPARATE

c) Diamètre intérieur de la tête de bielle (sans coussinets) / Interior diameter of the big end (without shell bearings) / シリンダヘッドの内径(シリンダを除く): 4 8 . 0 mm

d) Longueur entre axes / Length between the axes / シリンダヘッドの長さ: 1 3 2 . 0 ±0.1mm e) Poids minimum / Minimum weight / 最低重量: 4 5 6 g

319. Vilebrequin / Crankshaft / シリンダシャフト: a) Type de construction / Type of manufacture / 製造の形式: INTEGRAL

b) Matériau / Material / 材質: CAST IRON c) coulé / cast / 鋳造: forgé / forged / 鍛造: d) Nombre de paliers / Number of bearings / シリンダヘッドの数: 5

e) Type de paliers / Type of bearings / シリンダヘッドの形式: PLAIN f) Diamètre des paliers / Diameter of bearings / シリンダヘッドの内径: 5 0 . 0 mm

g) Matériau des chapeaux de paliers / Bearing caps material / シリンダヘッドの材質: CAST IRON h) Poids minimum du vilebrequin nu / Minimum weight of bare crankshaft / シリンダヘッド単体の最低重量: 1 1 0 5 0 g

320. Volant moteur / Flywheel / シリンダホイール: a) Matériau / Material / 材質: CAST IRON b) Poids minimum avec couronne de démarreur / Minimum weight with starter ring / シリンダホイール付きの最低重量: 5 9 0 0 g

Boîte manuelle / Manual gearbox / マニュアルギアボックス	Boîte automatique / Automatic gearbox / オートマチックギアボックス
<u>CAST IRON</u>	<u>STEEL PLATE</u>
<u>5 9 0 0</u> g	<u>1 3 0 0</u> g

Utilisable uniquement avec boîte de vitesses automatique / Only usable with an automatic gearbox / オートマチックギアボックスの使用のみ



FEDERATION INTERNATIONALE DE L'AUTOMOBILE
 8, Place de la Concorde, 8
 75008 PARIS

Marque
Make
会社名 DAIHATSU

Modèle
Model
型式 G 2 0 1

FISA Homologation No

A - 5 5 0 9

JAF公認番号 JA-165

321. Culasse : a) Nombre
Cylinderhead : Number 1 b) Matériau
シリンダーヘッド : 数 1 Material ALUMINIUM ALLOY
e) Angle entre soupape d'admission et la verticale
Angle between intake valve and vertical 25.5
シリンダーヘッドと垂直線との角度
f) Angle entre soupape d'échappement et la verticale
Angle between exhaust valve and vertical 20.5
シリンダーヘッドと垂直線との角度

F) Culasse nue
Bare cylinderhead
シリンダーヘッド単体

G) Chambre de combustion
Combustion chamber
燃焼室



323. Alimentation par carburateur :
Fuel feed by carburettor :
キャブ方式 :

a) Nombre de carburateurs
Number of carburetors XXXX
キャブの数

b) Type
Type XXXX
形式

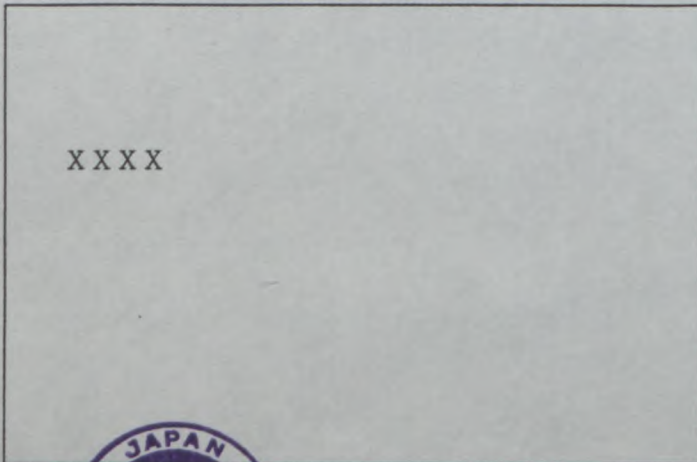
c) Marque et modèle
Make and model XXXX
会社名と型式

d) Nombre de passages de gaz par carburateur
Number of mixture passages per carburettor XXXX
キャブ出口パイプの数

e) Diamètre maximum de la sortie de gaz du carburateur
Maximum diameter of the carburettor mixture exit port XXXX mm
キャブ出口の最大内径

f) Diamètre du diffuseur au point d'étranglement maximum
Diameter of the venturi at the narrowest point XXXX ±0.25mm
キャブ径

H) Carburateur(s)
Carburettor(s)
キャブ



FEDERATION INTERNATIONALE
DE L'AUTOMOBILE
8, Place de la Concorde, 8
75008 PARIS

Marque
Make
会社名 DAIHATSU

Modèle
Model
型式 G 2 0 1

FISA Homologation No

A - 5 5 0 9

JAF公認番号 JA-165

324. Alimentation par injection :
Fuel feed by injection :

a) Marque
Make NIPPON DENSO b) Modèle
Model D-JETRONIC

c) Mode de dosage du carburant :
Kind of fuel measurement :

mécanique mechanical 機械式	électronique electronic 電式	hydraulique hydraulic 油圧式
---	----------------------------------	--

d) Dimensions du conduit d'admission au niveau du papillon ou de la guillotine
Dimensions of intake pipe at the throttle or slide location

50.0 ±0.25mm

e) Nombre de sorties effectives de carburant
Number of effective fuel outlets

4

f) Position des injecteurs
Position of injectors

f1)

Collecteur Manifold マニfold	Culasse Cylinderhead シリンダーヘッド
----------------------------------	--

g) Capteurs du système d'injection
Sensors of injection system

PRESSURE SENSOR, THROTTLE SENSOR

TEMPERATURE SENSOR, CRANK ANGLE SENSOR

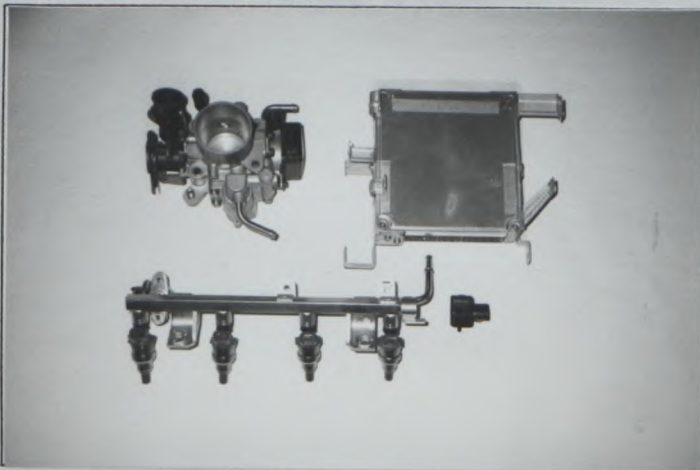
ENGINE SPEED SENSOR, O2 SENSOR

h) Actionneurs du système d'injection
Actuators of injection system

INJECTOR, PRESSURE REGULATOR

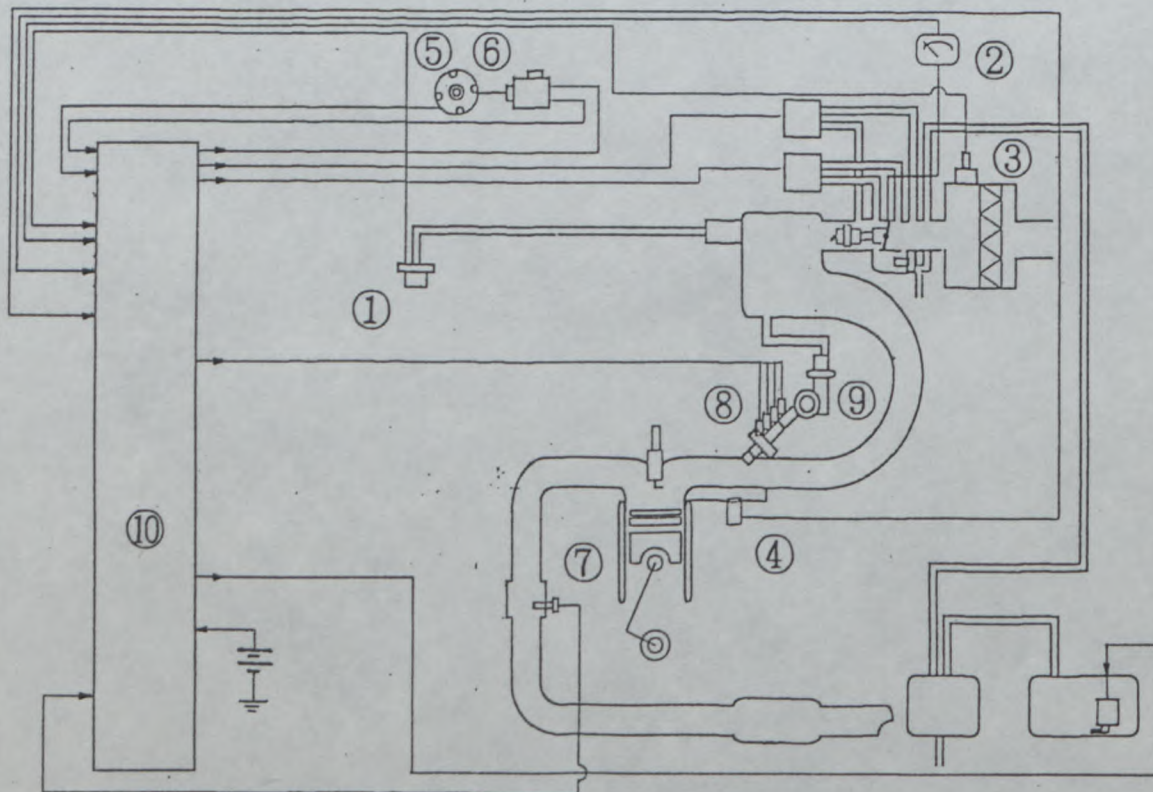
CONTROL UNIT

H) Système d'injection
Injection system



XIV) LOCALISATION DES CAPTEURS ET ACTIONNEURS / LOCATION OF SENSORS AND ACTUATORS / センサーとアクチュエーターの位置

- | | |
|----------------------|-----------------------|
| ① PRESSURE SENSOR | ⑥ ENGINE SPEED SENSOR |
| ② THROTTLE SENSOR | ⑦ O2 SENSOR |
| ③ TEMPERATURE SENSOR | ⑧ INJECTOR |
| ④ TEMPERATURE SENSOR | ⑨ PRESSURE REGULATOR |
| ⑤ CRANK ANGLE SENSOR | ⑩ CONTROL UNIT |



Marque / Make / 会社名: DAIHATSU

Modèle / Model / 型式: G 2 0 1

FISA Homologation No

A - 5 5 0 9

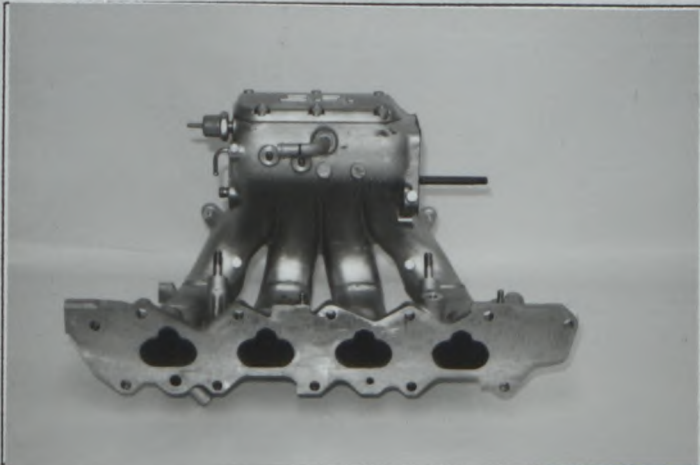
JAF公認番号 JA-165

325. Arbre à cames : a) Nombre / Number: 1
 Camshaft : b) Emplacement / Location: OVER HEAD
 凸轮轴 : c) Système d'entraînement / Drive system: BELT
 驱动方式 : d) Nombre de paliers par arbre / Number of bearings per shaft: 5
 凸轮轴当りのベアリングの数 : f) Système de commande de soupapes / Type of valve operation: ROCKER ARM
 凸轮作動方式 :

327. Admission : a) Matériau du collecteur / Material of manifold: ALUMINIUM ALLOY
 Intake : b) Nombre d'éléments du collecteur / Number of manifold elements: 1
 吸気マニホールドの要素の数 : c) Nombre de soupapes par cylindre / Number of valves per cylinder: 2
 吸気マニホールドポートの数 : d) Diamètre maximum de soupape / Maximum diameter of the valve: 30.2 mm
 バルブの最大径 : e) Diamètre de tige de soupape dans guide / Diameter of the valve stem in guide: 6.6 ±0.2mm
 ガイド位置のバルブステム径 : f) Longueur de soupape / Valve length: 112.8 ±1.5mm
 バルブの長さ : g) Type des ressorts de soupape / Type of valve springs: COIL
 バルブスプリングの形式 :

328. Echappement : a) Matériau du collecteur / Material of manifold: STAINLESS STEEL, CAST IRON
 Exhaust : b) Nombre d'éléments du collecteur / Number of manifold elements: 1
 排気マニホールド要素の数 : c) Dimensions intérieures de sortie collecteur / Internal dimensions of manifold exit: SEE PAGE 20
 排気マニホールド出口内寸法 : d) Nombre de soupapes par cylindre / Number of valves per cylinder: 2
 排気マニホールドポートの数 : e) Diamètre maximum de soupape / Maximum diameter of the valve: 26.2 mm
 バルブの最大径 : f) Diamètre de tige de soupape dans guide / Diameter of the valve stem in guide: 6.6 ±0.2mm
 ガイド位置のバルブステム径 : g) Longueur de soupape / Valve length: 114.5 ±1.5mm
 バルブの長さ : h) Type des ressorts de soupape / Type of valve springs: COIL
 バルブスプリングの形式 :

I) Collecteur d'admission / Intake manifold / 吸気マニホールド



J) Collecteur d'échappement / Exhaust manifold / 排気マニホールド



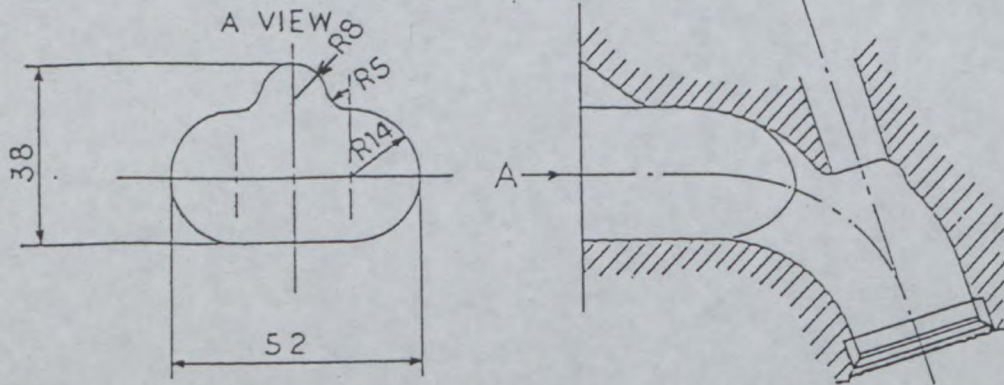
FEDERATION INTERNATIONALE
 DE L'AUTOMOBILE
 8, Place de la Concorde, 8
 75008 PARIS

Dessins des orifices du moteur - tolérances sur les dimensions : -2% , +4%

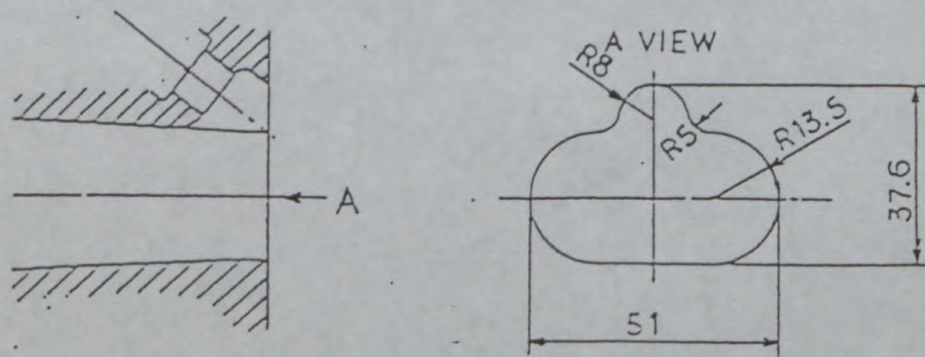
Drawings of engine ports - tolerances on dimensions : -2% , +4%

エンジンポートの図解 - 寸法公差 : -2% , +4%

I) Culasse, face collecteur / Cylinderhead, manifold side / シルダヘッド, マネホ側



II) Collecteur, côté culasse / Manifold, cylinderhead side / マネホ, シルダヘッド側



A D M I S S I O N / I N T A K E / 吸 気 系

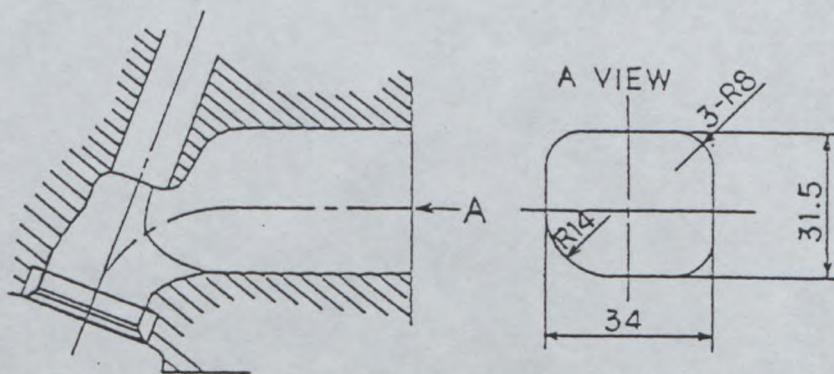


Dessins des orifices du moteur - tolérances sur les dimensions : -2% , +4%

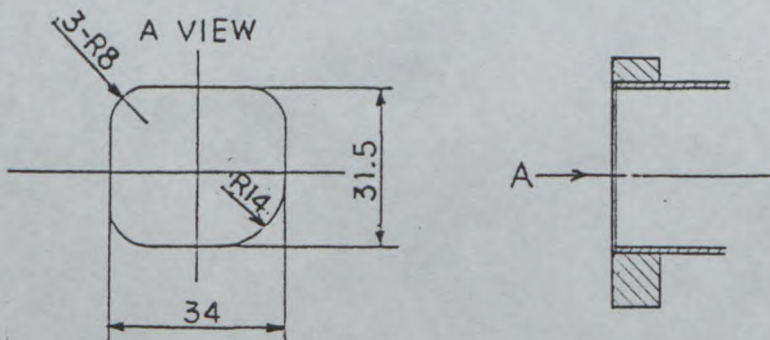
Drawings of engine ports - tolerances on dimensions : -2% , +4%

エンジン口の図解 - 寸法公差 : -2% , +4%

I) Culasse, face collecteur / Cylinderhead, manifold side / シルダヘッド, マニフル側



II) Collecteur, côté culasse / Manifold, cylinderhead side / マニフル, シルダヘッド側



E C H A P P E M E N T / 排 気 系



FEDERATION INTERNATIONALE
DE L'AUTOMOBILE
8, Place de la Concorde, 8
75008 PARIS

Marque
Make
会社名

DAIHATSU

Modèle
Model
型式

G 2 0 1

FISA Homologation No

A - 5 5 0 9

JAF公認番号 JA-165

330. Système d'allumage :
Ignition system :

点火装置 :

b) Nombre de bougies par cylindre
Number of plugs per cylinder
シリンダー当たりのプラグの数

1

c) Nombre de distributeurs
Number of distributors
ディストリビュータの数

1

333. Système de lubrification :
Lubrication system :

潤滑装置 :

a) Type
Type
形式

W E T S U M P

b) Nombre de pompes à huile
Number of oil pumps
オイルポンプの数

1



Marque
Make
会社名

DAIHATSU

Modèle
Model
型式

G 2 0 1

FISA Homologation No

A - 5 5 0 9

JAF公認番号 JA-165

4. CIRCUIT DE CARBURANT / FUEL CIRCUIT / 燃料系統

401. Réservoir : a) Nombre
Fuel tank : Number 1
燃料タンク : 数
b) Emplacement
Location UNDER THE REAR FLOOR at THE REAR SEAT CUSHION
位置
c) Matériau
Material STEEL
材質

5. EQUIPMENT ELECTRIQUE / ELECTRICAL EQUIPMENT / 電装部品

501. Batteries : a) Nombre
Batteries : Number 1
バッテリー : 数
b) Tension
Tension 1 2 volts
電圧

6. TRANSMISSION / POWER TRAIN / 駆動系

601. Roues motrices : avant

oui	有
yes	有

 arrière

oui	有
no	無
yes	有
no	無



Marque
Make
会社名 **DAIHATSU**

Modèle
Model
型式 **G 2 0 1**

FISA Homologation No

A - 5 5 0 9

JAF公認番号 **JA-165**

e) Rapports
比率

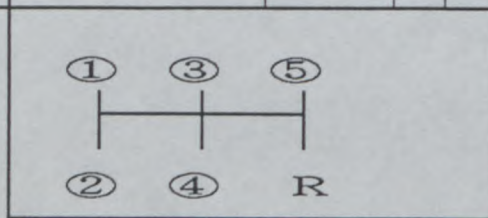
	Mannuelle/Manual/マニュアル			
	nombre de dents number of teeth 歯数	rapport ratio 比	constant	synchro
1	34 / 11	3.091		×
2	35 / 20	1.750		×
3	35 / 28	1.250		×
4	33 / 36	0.917		×
5	30 / 40	0.750		×
6	××××	××××		
AR/R リバース	44/29 × 29/14	3.143		
Constante Constant	××××	××××		

Automatique/Automatic/オートマチック

	Automatique/Automatic/オートマチック		
	nombre de dents number of teeth 歯数	rapport ratio 比	synchro
1	SEE BELOW	2.807	
2	SEE BELOW	1.479	
3	DIRECT	1.000	
4	1 - 26/98	0.735	
5	××××	××××	
AR/R リバース	SEE BELOW	2.769	

1	$(1 + \frac{73}{35} \times \frac{26}{98}) \times \frac{35}{73} \times \frac{98}{26}$
2	$(1 + \frac{73}{35}) \times \frac{35}{73}$
AR/R リバース	$(1 - \frac{26}{98}) \times \frac{98}{26}$

f) Grille de vitesses
Gear change gate
シフトパターン



g) Type de lubrification
Type of lubrication
潤滑形式

SPLASHING

FEDERATION INTERNATIONALE
DE L'AUTOMOBILE
8, Place de la Concorde, 8
75008 PARIS

P

R

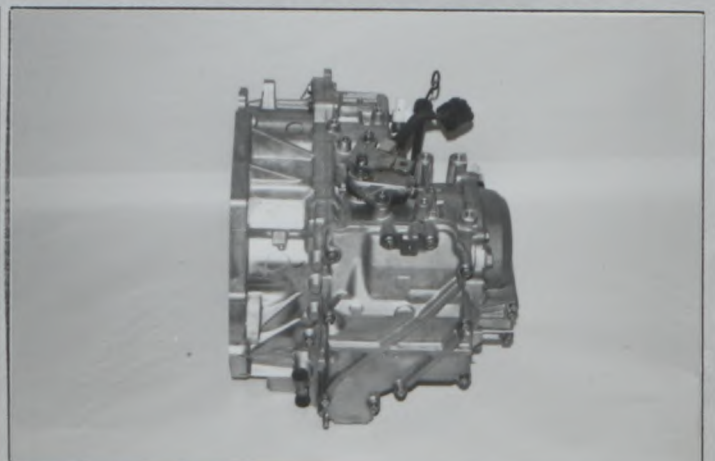
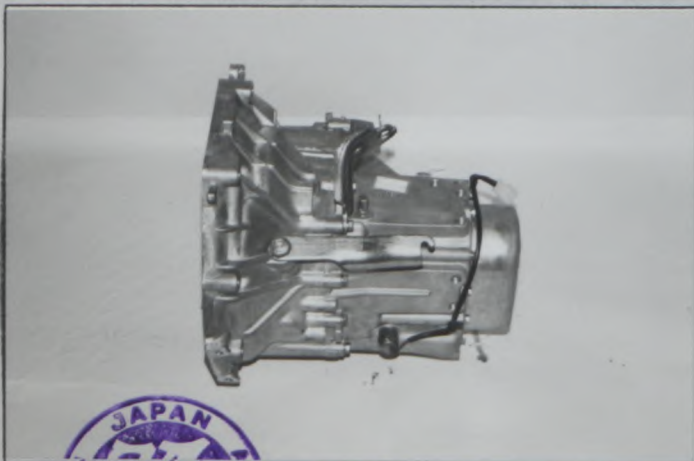
N

D

2

L

S) Carter de boîte de vitesses et cloche d'embrayage
Gearbox casing and clutch bell housing
ギヤボックスとクラッチベロハウジング



AUTOMATIC

Marque
Make
会社名

DAIHATSU

Modèle
Model
型式

G 2 0 1

FISA Homologation No

A - 5 5 0 9

JAF公認番号 JA-165

604. Boîte de transfert/différentiel central : a) Rappports
Transfer box/central differential : Ratios

トランスファー/中央差速器: キヤ比 XXXX

b) Nombre de dents
Numbers of teeth

XXXX

c) Système de commande de boîte de transfert
Control system of transfer box

トランスファーの制御装置

XXXX

d) Type de différentiel central
Type of central differential

センターの形式

XXXX

605. Coule final
Final drive

ファイナルドライブ

a) Type de couple final
Type of final drive

ファイナルドライブの形式

HERICAL GEAR

XXXX

b) Rapport
Ratio

キヤ比

4.267

XXXX

c) Nombre de dents
Number of teeth

歯数

64/15

XXXX

e) Type de lubrification
Type of lubrication

潤滑形式

SPLASHING

XXXX

606. Arbres :
Shafts :

シャフト:

a) Type des arbres longitudinaux
Type of longitudinal shafts

縦(ロバ)シャフトのシャフトの形式

XXXX

b) Matériau des arbres longitudinaux
Material of longitudinal shafts

縦(ロバ)シャフトのシャフトの材質

XXXX

c) Type des demi-arbres transversaux
Type of transversal half-shafts

トランスシャフトの形式

CONSTANT VELOCITY JOINT

d) Matériau des demi-arbres transversaux
Material of transversal half-shafts

トランスシャフトの材質

STEEL

XII) CHAINE CINEMATIQUE (4 rouws motrices) / KINEMATIC TRAIN (4 wheel drive) / 駆動系の図解(4輪駆動)

XXXX



FEDERATION INTERNATIONALE
DE L'AUTOMOBILE
8, Place de la Concorde, 8
75008 PARIS

Marque / Make / 会社名: DAIHATSU

Modèle / Model / 型式: G 2 0 1

FISA Homologation No

A - 5 5 0 9

JAF公認番号 JA-165

7. SUSPENSION / SUSPENSION / サスペンション

701. Généralités

General

a) Type de suspension / Type of suspension / 形状形式

	Avant / Front / 前		Arrière / Rear / 後	
	INDEPENDENT / MCPHERSON		INDEPENDENT / MCPHERSON	
702. Ressorts hélicoïdaux / Helicoidal springs / 螺旋スプリング	oui / yes / 有	non / no / 無	oui / yes / 有	non / no / 無
703. Ressorts à lames / Leaf springs / リーフスプリング	oui / yes / 有	non / no / 無	oui / yes / 有	non / no / 無
704. Barres de torsion / Torsion bars / トーションバール	oui / yes / 有	non / no / 無	oui / yes / 有	non / no / 無

705. Autre type de suspension : / Other type of suspension : / 他形式のサスペンション :

~~voir description sur fiche supplémentaire~~
~~See description on additional form~~
~~追加資料の記述を参照~~

707. Amortisseurs :

Shock absorbers :

a) Nombre par roue / Number per wheel / 1個当たりの数

b) Type

Type

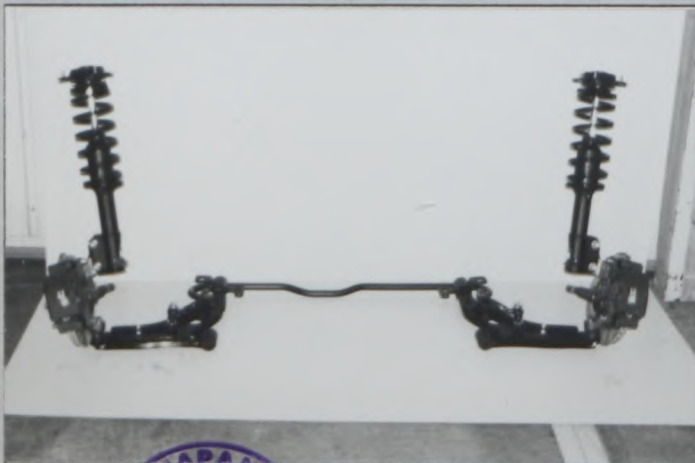
c) Principe de fonctionnement / Principle of operation

作動の原理

	Avant / Front / 前		Arrière / Rear / 後	
a)	1		1	
b)	TELESCOPIC		TELESCOPIC	
c)	HYDRAULIC		HYDRAULIC	

T) Train avant complet déposé / Complete dismantled front axle / 取り外したフロントアクル一式

U) Train arrière complet déposé / Complete dismantled rear axle / 取り外したリアアクル一式



FEDERATION INTERNATIONALE
 DE L'AUTOMOBILE
 8, Place de la Concorde, 8
 75008 PARIS

Marque
Make
会社名 DAIHATSU

Modèle
Model
型式 G 2 0 1

FISA Homologation No

A - 5 5 0 9

JAF公認番号 JA-165

8. TRAIN ROULANT / RUNNING GEAR / 走行装置

801. Roues :

Wheels :

ホイール :
a) Diamètre
Diameter
直径

Avant / Front / 前	Arrière / Rear / 後
<u>14</u> " / <u>355</u> mm	<u>14</u> " / <u>355</u> mm

803. Freins :

Brakes :

ブレーキ :

a) Système de freinage

Braking system

ブレーキ方式

DOUBLE HYDRAULIC

b) Nombre de maître-cylindres

Number of master cylinders

マスターシリンダーの数

TANDEM

b1) Alésages

Bores

ボア

20.6 mm /

20.6 mm

c) Servo-frein

Servo-brakes

サーボブレーキ

oui non
yes no
有 無

c1) Marque et type

Make and type

会社名と形式

JIDOSHAKIKI, VACUUM

d) Régulateur de freinage

Braking regulator

ブレーキレギュレーター

oui non
yes no
有 無

d1) Emplacement

Location

位置

DASH PANEL

e) Nombre de cylindres par roue

Number of cylinders per wheel

ホイール当たりのシリンダーの数

e1) Alésage

Bore

ボア

Avant / Front / 前	Arrière / Rear / 後
<u>1</u>	<u>1</u>
<u>50.8</u> mm	<u>30.2</u> mm
<u>XXXX</u> ± 1.5 mm	<u>XXXX</u> ± 1.5 mm
<u>XXXX</u>	<u>XXXX</u>
<u>XXXX</u> ± 1.5 mm	<u>XXXX</u> ± 1.5 mm
<u>XXXX</u> ± 1 mm	<u>XXXX</u> ± 1 mm
<u>2</u>	<u>2</u>
<u>1</u>	<u>1</u>
<u>CAST-IRON</u>	<u>CAST-IRON</u>
<u>18</u> ± 1 mm	<u>9</u> ± 1 mm
<u>234</u> ± 1.5 mm	<u>231</u> ± 1.5 mm
<u>232</u> ± 1.5 mm	<u>229</u> ± 1.5 mm

f) Freins à tambours :

Drum brakes :

ドラムブレーキ :

f1) Diamètre intérieur

Internal diameter

内径

f2) Nombre de garnitures par roue

Number of linings per wheel

ホイール当たりのシューの数

f3) Longueur développée des garnitures

Developed length of linings

シューの長さ

f4) Largeur des garnitures

Width of the linings

シューの幅

g) Freins à disques :

Disc brakes :

ディスクブレーキ :

g1) Nombre de plaquettes par roue

Number of pads per wheel

ホイール当たりのパッドの数

g2) Nombre d'étriers par roue

Number of calipers per wheel

ホイール当たりのキャリパーの数

g3) Matériau des étriers

Caliper material

キャリパーの材質

g4) Epaisseur du disque neuf

Thickness of new disc

新品ディスクの厚さ

g5) Diamètre extérieur du disque

External diameter of the disc

ディスクの外径

g6) Diamètre extérieur de frottement

External diameter of pads' rubbing

surface

パッド摩擦面の直径



FEDERATION INTERNATIONALE
DE L'AUTOMOBILE
8, Place de la Concorde, 8
75008 PARIS

Marque
Make
会社名

DAIHATSU

Modèle
Model
型式

G 2 0 1

FISA Homologation No

A - 5 5 0 9

JAF公認番号 JA-165

- g7) Diamètre intérieur de frottement des plaquettes
Internal diameter of pads' rubbing surface
パッド摩擦面の内径
- g8) Longueur hors-tout des plaquettes
Overall length of the pads
パッドの全長
- g9) Disques ventilés
Ventilated discs
ベンチレーテッドディスク

Avant / Front / 前		Arrière / Rear / 後	
148	± 1.5 mm	166	± 1.5 mm
113	± 1.5 mm	102	± 1.5 mm
oui yes 有	non no 無	oui yes 有	non no 無

- h) Frein de stationnement :
Parking brake :
パーキングブレーキ :

- h1) Système de commande
Control system
作動方式

CABLE

- h2) Emplacement de commande
Location of lever
レバの位置

CENTRAL TUNNEL, BETWEEN SEAT

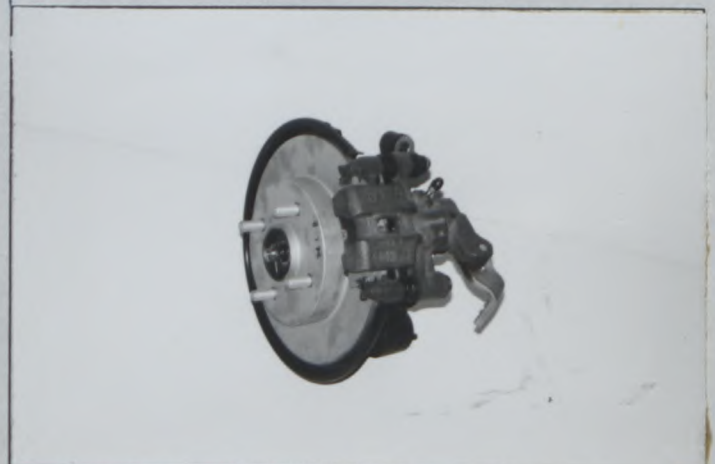
- h3) Effet sur roues
On which wheels
作動ホイール

Avant	Arrière
Front	Rear
冊	後

- V) Frein avant
Front brake
フロントブレーキ



- W) Frein arrière
Rear brake
リアブレーキ



804. Direction :
Steering :

方向 :

- a) Type
Type
形式

Avant / Front / 前		Arrière / Rear / 後	
RACK & PINION		XXXXX	
oui yes 有	non no 無	oui yes 有	non no 無
HYDRAULIC		XXXXX	

- b) Servo-assistance
Power assisted
パワーアシスト

Type
Type
形式



Marque / Make / 会社名: DAIHATSU

Modèle / Model / 型式: G 2 0 1

FISA Homologation No

A - 5 5 0 9

JAF公認番号 JA-165

9. CARROSSERIE / BODYWORK / 車体

901. Intérieur : a) Ventilation
Interior : Ventilation
室内: 換気

oui	有り
yes	有
有	無

b) Chauffage
Heating
ヒーター

oui	有り
yes	有
有	無

f) Toit ouvrant optionnel
Optional sun roof
オプションサンルーフ

oui	non
yes	no
有	無

f1) Type
Type
形式: × × × ×

f2) Système de commande
Control system
制御方式: × × × ×

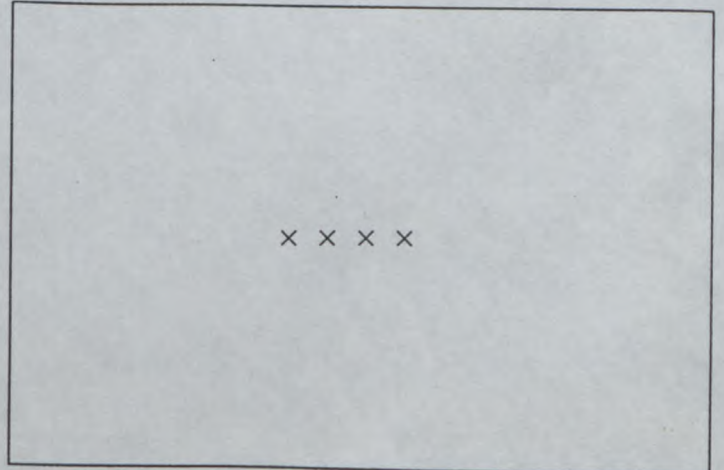
g) Système d'ouverture des vitres latérales
Opening system for side windows
側窓開閉方式

Avant / Front / 前	Arrière / Rear / 後
POWER	× × × ×

X) Tableau de bord
Dashboard
ダッシュボード



Y) Toit ouvrant
Sunroof
サンルーフ



Marque
Make
会社名 DAIHATSU

Modèle
Model
型式 G 2 0 1

FISA Homologation No

A-5509

JAF公認番号 **JA-165**

902. Extérieur :
Exterior :
室外 :

a) Nombre de portes
Number of doors
ドアの数 2

b) Hayon
Tailgate
テールゲート

oui yes 有	非有 非 無
-----------------	--------------

c) Matériau des portières
Door material
ドアの材質

Avant / Front / 前	Arrière / Rear / 後
STEEL	STEEL

d) Matériau du capot avant
Front bonnet material
フロントボンネットの材質

STEEL

e) Matériau du capot arrière / hayon
Rear bonnet / tailgate material
リアボンネット / テールゲートの材質

STEEL

f) Matériau de la carrosserie
Bodywork material
車体の材質

ACRYLONITRILE BUTADIENE STYRENE POLYVINYL CHLORIDE POLYPROPYLEN

h) Matériau de lunette arrière
Rear window material
リアウィンドウの材質

SAFETY GLASS

i) Matériau des glaces de custode
Rear quarter window material
リアクォーターウィンドウの材質

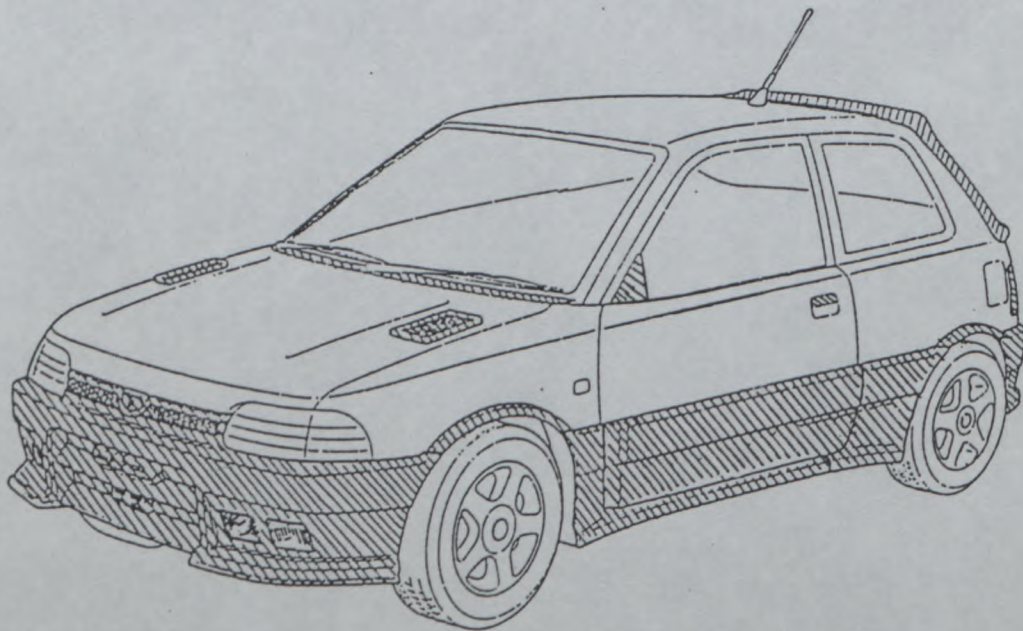
SAFETY GLASS

k) Matériau des vitres latérales
Side window material
サイドウィンドウの材質

Avant / Front / 前	Arrière / Rear / 後
SAFETY GLASS	× × × ×
POLYPROPYLEN	POLYPROPYLEN

l) Matériau du pare-choc
Material of bumper
バンパーの材質

XIII) PARTIES DE CARROSSERIE SYNTHETIQUES / SYNTHETIC PARTS OF THE BODY / 車両外観でプラスチックや合成樹脂部品の区別



FEDERATION INTERNATIONALE
DE L'AUTOMOBILE
8, Place de la Concorde, 8
75008 PARIS

Marque
Make DAIHATSU
会社名

Modèle
Model G 2 0 1
型式

A - 5 5 0 9

JAF公認番号 **JA-165**

INFORMATIONS COMPLEMENTAIRES / COMPLEMENTARY INFORMATION / 補足項目

[1] AUTOMATIC GEARBOX

602. CLUTCH

(b) CONTROL SYSTEM : ××××

(c) NUMBER OF PLATES : ××××

603. GEARBOX

(g) TYPE OF LUBRICATION : UNDER PRESSURE

605. FINAL DRIVE

FRONT

(b) RATIO = 3.853

(c) NUMBER OF TEETH = 54/53 × 87/23

[2] MANUAL GEARBOX

605. FINAL DRIVE

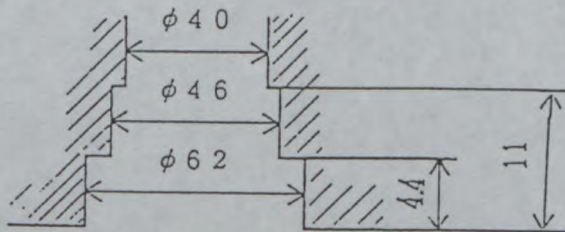
FRONT

(b)RATIO	4.643	4.933	5.077	5.357	5.692
(c)NUMBER OF TEETH	65/14	74/15	66/13	75/14	74/13

[3] EXHAUST

328.

(c) INTERNAL DIMENSIONS OF MANIFOLD EXIT



unit : mm





FEDERATION INTERNATIONALE
DU SPORT AUTOMOBILE
JAPAN AUTOMOBILE FEDERATION



社団法人 日本自動車連盟

Homologation No

A-5509

Extension No.

Group A / ~~B~~ / ~~T1~~
Group ~~B~~ / ~~T1~~
グループ

JAF公認番号

JA-165

CERTIFICAT DE DIMENSIONS INTERIEURES
CERTIFICATE FOR INTERIOR DIMENSIONS
室内寸法の証明書

Véhicule: Constructeur
Vehicle: Manufactureur
車両: 会社名

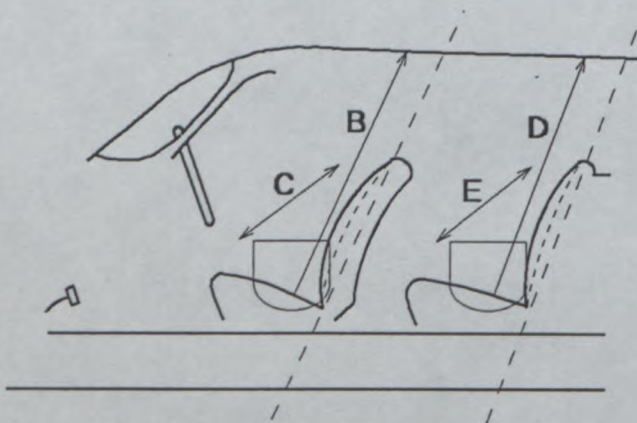
DAIHATSU MOTOR CO., LTD

Modèle et type
Model and type
モデルと形式

CHARADE GT1 (G201)
(CHARADE DETOMASO)

Dimensions intérieures comme définies par le Règlement d'Homologation.
Interior dimensions as defined by the Homologation Regulations.

車両公認規則で定義された室内寸法

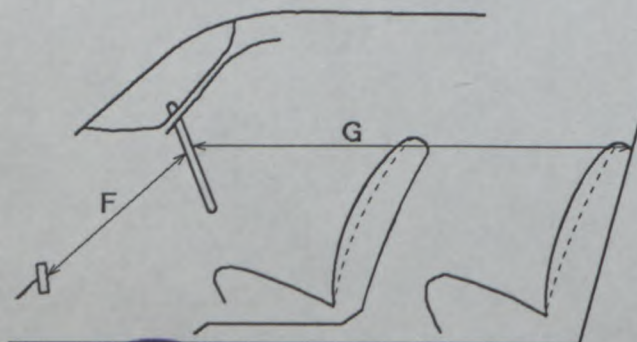


B (Hauteur sur sièges avant)
(Height above front seats)
(前座席上部の高さ) 991 mm

C (Largeur aux sièges avant)
(Width at front seats)
(前座席の中) 1170 mm

D (Hauteur sur sièges arrière)
(Height above rear seats)
(後座席上部の高さ) 928 mm

E (Largeur aux sièges arrière)
(Width at rear seats)
(後座席の中) 1304 mm



F (Volant-Pédale de frein)
(Steering wheel - brake pedal)
(リアングホイール - ブレーキペダル) 661 mm

G (Volant-paroi de séparation arrière)
(Steering wheel - rear bulkhead)
(リアングホイール - 後部バルクヘッド) 1546 mm

H = F + G = 2207 mm



FEDERATION INTERNATIONALE
DE L'AUTOMOBILE
8, Place de la Concorde, 8
75008 PARIS



FEDERATION INTERNATIONALE
DU SPORT AUTOMOBILE
JAPAN AUTOMOBILE FEDERATION
社団法人 日本自動車連盟

FISA Homologation No

A-5509

Extension No

01/01VO

JAF 公認番号 TA-165VO- 1/1

発効年月日 1994年 5月31日

FORM OF EXTENSION TO THE OFFICIAL FISA HOMOLOGATION
FISA 公認追加書式

- ES Sporting evolution of the type / スポーツ進化
- ET Normal evolution of the type / 形式の正常進化
- VF Supply variant / 供給変型
- VO Option variant / オプション変型
- ER Erratum / 誤記訂正

Homologation valid as from
公認発行日

01 JUL. 1994

in group
FISA グループ A

Manufacturer
製造者

DAIHATSU MOTOR CO., LTD.

Model and type
型式と形式

CHARADE GTI (G201)
(CHARADE DETOMASO)

Page or ext. ページまたは補足	Art. 項目	Description 記述
12	6 603 e)	<u>Power train</u> Gear box Ratios-1 Number of teeth Ratio Synchro 1. 33/12 2.750 X 2. 35/20 1.750 X 3. 32/26 1.231 X 4. 33/36 0.917 X 5. 30/40 0.750 X R. (44/29)X(29/14) 3.143 - Ratios-2 1. 34/14 2.429 X 2. 31/17 1.824 X 3. 29/20 1.450 X 4. 26/22 1.182 X 5. 24/25 0.960 X R. (44/29)X(29/14) 3.143 -



FEDERATION INTERNATIONALE
DE L'AUTOMOBILE
8, Place de la Concorde, 8
75008 PARIS

Homologation No.

A-5509

Marque

Make

DAIHATSU

Modele

Model

G 2 0 1

Extension No.

01/01V0

JA-165VO- 1/1

Page ou ext. Page or ext.	Article. Article.	Description. Description
12	603	Reinforced gear lever linkage Photo No. 9401
14	605	Final Drive Ratio: 4.389 4.105 5.154 3.524 Teeth No.: 79/18 78/19 67/13 74/21 Ratio: 3.300 3.550 3.789 3.944 Teeth No.: 66/20 71/20 72/19 71/18 Ratio: 4.235 4.438 4.562 Teeth No.: 72/17 71/16 73/16
14	606	Alternative strengthened drive shafts Left hand Photo No.9405 Right hand Type A Photo No. 9402 Type B Photo No. 9403 Type C Photo No. 9404 Type D Photo No. 9406
15	7	<u>Suspension</u>
15	707	Alternative front top mount. Photo No. 9407 Alternative rear top mount. Photo No. 9408
15	T)	Alternative front suspension arm. Type 1 Photo No. 9409 Alternative front suspension arm. Type 2 Photo No. 9410 Alternative front suspension arm. Type 3 Photo No. 9411 Alternative front suspension arm. Type 4 Photo No. 9412
15	U)	Alternative rear suspension arm. Type 1 Photo No. 9413 Alternative rear suspension arm. Type 2 Photo No. 9414 Alternative rear suspension arm. Type 3 Photo No. 9415
15	U)	Alternative rear suspension arm. Type 4 Photo No. 9416
15		Front subframe with chassis anchorage points in accordance with the homologation regulations. Photo No. 9447 Photo No. 9448

Marque
Make DAIHATSU

Modele
Model G 2 0 1

Homologation No.
A-5509

Extension No.
01/01V0

JA-165V0- 1/1

Page ou ext. Page or ext.	Article. Article.	Description. Description
16	8	<u>Running Gear</u> Caliper mount bracket Type 1 Photo No. 9417 Caliper mount bracket Type 2 Photo No. 9418 Caliper mount bracket Type 3 Photo No. 9419 Caliper mount bracket Type 4 Photo No. 9420
16		Wheel Spacers. Photo No. 9421
16	803	Dual cylinder pedal box with adjustment possible from cockpit Type A Photo No. 9422 Type B Photo No. 9422a
16	803	Brakes. Brake bell front and or rear type A Photo No. 9423 Brake bell front and or rear type B Photo No. 9424 Wheel scraper. Front and or rear Photo No. 9425 d: Location. Dashboard in cabin Photo No. 9426



FEDERATION INTERNATIONALE
DE L'AUTOMOBILE
8, Place de la Concorde, 8
75008 PARIS

3/18

Marque
Make DAIHATSU

Modele
Model G 2 0 1

Homologation No.

A-5509

Exstension No.

.01/01V0

JA-165V0- 1/1

Page ou ext. Page or ext.	Article. Article.	Description. Description
16	803	Brakes. d: Braking adjuster. Yes. d1: Location: Central tunnel, between seats. Type 1 Photo No. 9427 Part No. CNBR501 Type 2 photo No. 9428 Part No. CNBR 502
16	803	Number of master cylinders: 2 b1: Bore Type A 15.9 + - 1.0 mm Part No. CNBR550 Type B 17.8 + - 1.0 mm Part No CNBR551 Type C 20.6 + - 1.0 mm Part No. CNBR552 Type D 22.2 + - 1.0 mm Part No. CNBR553 c: Servo brakes.: No.
16, 17.	803	Brakes. Parking brake. Photo No. 9429 h1 Control system: Hydraulic. Part No. CNBR500
16, 17	803	Brakes. Front and / or rear brake caliper.(Lug or radial mount) e: No. of Cylinders 1 e1: Bore. From 50 mm to 60 mm + - 1.0mm g1: No of pads per wheel. 2 g2: No. of calipers per wheel. 1 g3: Caliper material. Iron and Aluminium Alloy. g8: Overall length of pad. 115 mm + - 1.5 mm Parts No. left side CNBR560 Parts No. right side CNBR561 Photo No. 9430 Note: Calipers may be fitted with or without stone protection sheilds.



FEDERATION INTERNATIONALE
DE L'AUTOMOBILE
8, Place de la Concorde, 8
75008 PARIS

4/18

Marque
Make

DAIHATSU

Modele
Model

G 2 0 1

Homologation No.

A-5509

Extension No.

01/01V0

JA-165V0- 1/1

Page ou ext. Page or ext.	Article. Article.	Description. Description
16, 17	803	Brakes. Front and / or rear brake caliper.(Lug or radial mount) e: No. of Cylinders 2 e1: Bore. From 31 mm to 45 mm + - 1.0mm g1: No of pads per wheel. 2 g2: No. of calipers per wheel. 1 g3: Caliper material. Aluminium Alloy. g8: Overall length of pad. 73 mm + - 1.5 mm Parts No. left side CNBR562 Parts No. right side CNBR563 Photo No. 9431 Note: Calipers may be fitted with or without stone protection sheilds.
16, 17	803	Brakes. Front and / or rear brake caliper.(Lug or radial mount) e: No. of Cylinders 4 e1: Bore. From 37 mm to 42 mm + - 1.0mm g1: No of pads per wheel. 2 g2: No. of calipers per wheel. 1 g3: Caliper material. Aluminium Alloy. g8: Overall length of pad. 116 mm + - 1.5 mm Parts No. left side CNBR564 Parts No. right side CNBR565 Photo No. 9432 Note: Calipers may be fitted with or without stone protection sheilds.



FEDERATION INTERNATIONALE
DE L'AUTOMOBILE
8, Place de la Concorde, 8
75008 PARIS

5/18

Marque
Make DAIHATSU

Modele
Model G201

Homologation No.
A-5509

Exstension No.
01/01 VO
JA-165 VO- 1/1

Page ou ext. Page or ext.	Article. Article.	Description. Description
16, 17	803	<p>Brakes. Front and / or rear brake caliper.(Lug or radial mount) e: No. of Cylinders 6 e1: Bore. From 26 mm to 39 mm + - 1.0mm g1: No of pads per wheel. 2 g2: No. of calipers per wheel. 1 g3: Caliper material. Aluminium Alloy. g8: Overall length of pad. 150 mm + - 1.5 mm Parts No. left side CNBR566 Parts No. right side CNBR567 Photo No. 9433 Note: Calipers may be fitted with or without stone protection sheilds.</p>
16, 17	803	<p>Brakes. Front and / or rear brake caliper.(Lug or radial mount) e: No. of Cylinders 4 e1: Bore. From 29 mm to 34 mm + - 1.0mm g1: No of pads per wheel. 2 g2: No. of calipers per wheel. 1 g3: Caliper material. Aluminium Alloy. g8: Overall length of pad. 113 mm + - 1.5 mm Parts No. left side CNBR568 Parts No. right side CNBR569 Photo No. 9434 Note: Calipers may be fitted with or without stone protection sheilds.</p>
16, 17	803	<p>Brakes. Front and / or rear brake caliper.(Lug or radial mount) e: No. of Cylinders 4 e1: Bore. From 35 mm to 44 mm + - 1.0mm g1: No of pads per wheel. 2 g2: No. of calipers per wheel. 1 g3: Caliper material. Aluminium Alloy. g8: Overall length of pad. 130 mm + - 1.5 mm Parts No. left side CNBR566 Parts No. right side CNBR567 Photo No. 9435 Note: Calipers may be fitted with or without stone protection sheilds.</p>



FEDERATION INTERNATIONALE
DE L'AUTOMOBILE
8, Place de la Concorde, 8
75008 PARIS

6/18

Marque
Make DAIHATSU

Modele
Model G 2 0 1

Homologation No.
A-5509

Exstension No.
.01/01V0
JA-165V0-1/1

Page ou ext. Page or ext.	Article. Article.	Description. Description
16, 17	803	Brakes. Front and / or rear disc. Plain or grooved and / or cross drilled. g4: From 15 mm + - 1.0 mm to 21 mm + - 1.0 mm g5: External dia. 265 mm + - 1.5 mm g6: External dia. friction surface. 265 mm + - 1.5 mm g7: Internal dia. friction surface. 175 mm + - 1.5 mm g9: Ventilated. Yes. Parts No. CNBR570 Photo No. 9436 Note The friction surface may be less than the disc area available.
16, 17	803	Brakes Front and / or rear disc. Plain or grooved and / or cross drilled. g4: From 24 mm + - 1.0 mm to 28 mm + - 1.0 mm g5: External dia. 292 mm + - 1.5 mm g6: External dia. friction surface. 292 mm + - 1.5 mm g7: Internal dia. friction surface. 186 mm + - 1.5 mm g9: Ventilated. yes. Parts No. CNBR571 Photo No. 9437 Note The friction surface may be less than the disc area available.



FEDERATION INTERNATIONALE
DE L'AUTOMOBILE
8, Place de la Concorde, 8
75008 PARIS

7/18

Marque
Make DAIHATSU

Modele
Model G 2 0 1

Homologation No.
A-5509

Exstension No.
01/01 VO
JA-165 VO- 1/1

Page ou ext. Page or ext.	Article. Article.	Description. Description												
16,17	803	<p>Brakes Front and / or rear disc. Plain or grooved and / or cross drilled. g4: From 9.0 mm + - 1.0 mm to 16.0 mm + - 1.0 mm</p> <table border="1"> <tr> <td>g5 External dia.</td> <td>280 mm + - 1.5 mm</td> <td>277 mm + - 1.5 mm</td> <td>264 mm + - 1.5 mm</td> </tr> <tr> <td>g6 External dia. friction surface.</td> <td>280 mm + - 1.5 mm</td> <td>277 mm + - 1.5 mm</td> <td>264 mm + - 1.5 mm</td> </tr> <tr> <td>g7 Internal dia. friction surface.</td> <td>192 mm + - 1.5 mm</td> <td>192 mm + - 1.5 mm</td> <td>177 mm + - 1.5 mm</td> </tr> </table> <p>g9 Ventilated. no. Parts No. CNBR572 Photo No. 9438 Note The friction surface may be less than the disc area available.</p>	g5 External dia.	280 mm + - 1.5 mm	277 mm + - 1.5 mm	264 mm + - 1.5 mm	g6 External dia. friction surface.	280 mm + - 1.5 mm	277 mm + - 1.5 mm	264 mm + - 1.5 mm	g7 Internal dia. friction surface.	192 mm + - 1.5 mm	192 mm + - 1.5 mm	177 mm + - 1.5 mm
g5 External dia.	280 mm + - 1.5 mm	277 mm + - 1.5 mm	264 mm + - 1.5 mm											
g6 External dia. friction surface.	280 mm + - 1.5 mm	277 mm + - 1.5 mm	264 mm + - 1.5 mm											
g7 Internal dia. friction surface.	192 mm + - 1.5 mm	192 mm + - 1.5 mm	177 mm + - 1.5 mm											
16,17	803	<p>Brakes. Front and / or rear disc. Plain or grooved and / or cross drilled. g4: From 9.0 mm + - 1.0 mm to 16.0 mm + - 1.0 mm</p> <table border="1"> <tr> <td>g5 External dia.</td> <td>280 mm + - 1.5 mm</td> <td>277 mm + - 1.5 mm</td> <td>264 mm + - 1.5 mm</td> </tr> <tr> <td>g6 External dia. friction surface.</td> <td>280 mm + - 1.5 mm</td> <td>277 mm + - 1.5 mm</td> <td>264 mm + - 1.5 mm</td> </tr> <tr> <td>g7 Internal dia. friction surface.</td> <td>192 mm + - 1.5 mm</td> <td>192 mm + - 1.5 mm</td> <td>177 mm + - 1.5 mm</td> </tr> </table> <p>g9 Ventilated. yes. Parts No. CNBR574 Photo No. 9439 Note The friction surface may be less than the disc area available.</p>	g5 External dia.	280 mm + - 1.5 mm	277 mm + - 1.5 mm	264 mm + - 1.5 mm	g6 External dia. friction surface.	280 mm + - 1.5 mm	277 mm + - 1.5 mm	264 mm + - 1.5 mm	g7 Internal dia. friction surface.	192 mm + - 1.5 mm	192 mm + - 1.5 mm	177 mm + - 1.5 mm
g5 External dia.	280 mm + - 1.5 mm	277 mm + - 1.5 mm	264 mm + - 1.5 mm											
g6 External dia. friction surface.	280 mm + - 1.5 mm	277 mm + - 1.5 mm	264 mm + - 1.5 mm											
g7 Internal dia. friction surface.	192 mm + - 1.5 mm	192 mm + - 1.5 mm	177 mm + - 1.5 mm											



FEDERATION INTERNATIONALE
DE L'AUTOMOBILE
8, Place de la Concorde, 8
75008 PARIS

Marque
Make DAIHATSU

Modele
Model G 2 0 1

Homologation No.
A-5509

Extension No.
01701V0
JA-165V0-1/1

Page ou ext. Page or ext.	Article. Article.	Description. Description									
16, 17	803	<p>Brakes. Front and / or rear disc. Plain or grooved and / or cross drilled. g4: From 17.0 mm + - 1.0 mm to 36.0 mm + - 1.0 mm g5: External dia.</p> <table border="1"> <tr> <td>315 mm + - 1.5 mm</td> <td>304 mm + - 1.5 mm</td> <td>280 mm + - 1.5 mm</td> </tr> </table> <p>g6: External dia. friction surface.</p> <table border="1"> <tr> <td>315 mm + - 1.5 mm</td> <td>304 mm + - 1.5 mm</td> <td>280 mm + - 1.5 mm</td> </tr> </table> <p>g7: Internal dia. friction surface.</p> <table border="1"> <tr> <td>195 mm + - 1.5 mm</td> <td>203 mm + - 1.5 mm</td> <td>174 mm + - 1.5 mm</td> </tr> </table> <p>g9: Ventilated. yes. Parts No. CNBR573 Photo No. 9440 Note The friction surface may be less than the disc area available.</p>	315 mm + - 1.5 mm	304 mm + - 1.5 mm	280 mm + - 1.5 mm	315 mm + - 1.5 mm	304 mm + - 1.5 mm	280 mm + - 1.5 mm	195 mm + - 1.5 mm	203 mm + - 1.5 mm	174 mm + - 1.5 mm
315 mm + - 1.5 mm	304 mm + - 1.5 mm	280 mm + - 1.5 mm									
315 mm + - 1.5 mm	304 mm + - 1.5 mm	280 mm + - 1.5 mm									
195 mm + - 1.5 mm	203 mm + - 1.5 mm	174 mm + - 1.5 mm									
17	804	<p>Steering. Photo No. 9441 Ratio: 13.5 : 1 Power assisted: Yes. Part No. CNB500</p>									
17	804	<p>Steering. Reinforced steering rod Type 1 Photo No. 9442 Type 2 Photo No.9443</p>									
17	804	<p>Reinforced steering gearbox. Photo No. 9444</p>									
18	9	<p><u>Body Work</u></p>									
18	901	<p>Optional sunroof (Rallies only) Type 1 Photo No. 9445 Type 2 Photo No. 9446 Note maximum height within 100 mm, maximum width within 500 mm, within first third of the roof.</p>									



FEDERATION INTERNATIONALE
DE L'AUTOMOBILE
8, Place de la Concorde, 8
75008 PARIS

Marque Make DAIHATSU

Modèle Model G201

Homologation No
A-5509

Extension No
01/01V0

JA-165 VO- 1/1

PHOTO No 9401



PHOTO No 9402



PHOTO No 9403



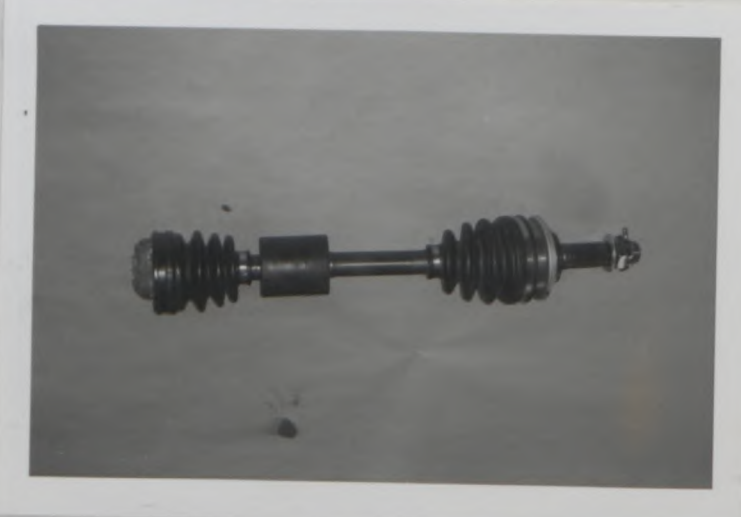
PHOTO No 9404



PHOTO No 9405



PHOTO No 9406



FEDERATION INTERNATIONALE
DE L'AUTOMOBILE
8, Place de la Concorde, 8
75008 PARIS

(c) PSA/F. Champ... 1990-01/01/01V0

10/18

Marque
Make

DAIHATSU

Modèle
Model

G201

Homologation No.
A-5509

Extension No.
01/01V0
JA-165V0-1/1

PHOTO No 9407



PHOTO No 9408



PHOTO No 9409



PHOTO No 9410



PHOTO No 9411



PHOTO No 9412



FISA/F.C. 1973-1990-01001.FB.10.90

FEDERATION INTERNATIONALE
DE L'AUTOMOBILE
8, Place de la Concorde, 8
75008 PARIS

11/18

Marque Make DAIHATSU

Modèle Model G201

Homologation No
A-5509

Extension No
01/01V0
JA-165V0- 1/1

PHOTO No 9413



PHOTO No 9414



PHOTO No 9415



PHOTO No 9416



PHOTO No 9417



PHOTO No 9418



FEDERATION INTERNATIONALE
DE L'AUTOMOBILE
8, Place de la Concorde, 8
75008 PARIS

(c) FISA / F.C. 1990 1990.010.01.FB.10.90

12/18

Marque
Make

DAIHATSU

Modèle
Model

G20/

Homologation No-

A-5509

Extension No

01/01V0

JA-165V0-1/1

PHOTO No 9419



PHOTO No 9420



PHOTO No 9421

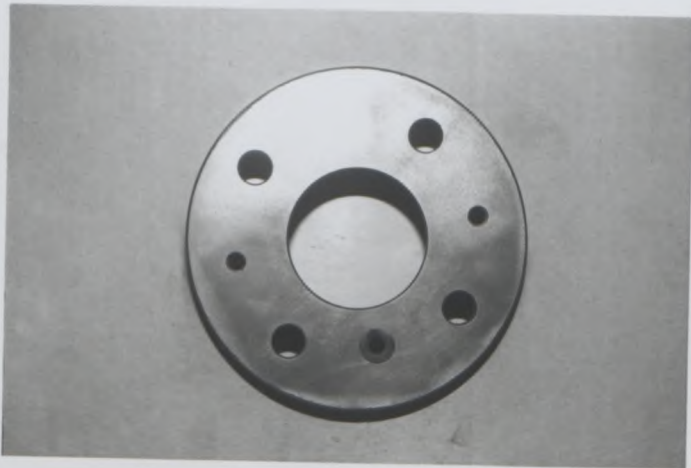


PHOTO No 9422



PHOTO No 9422A

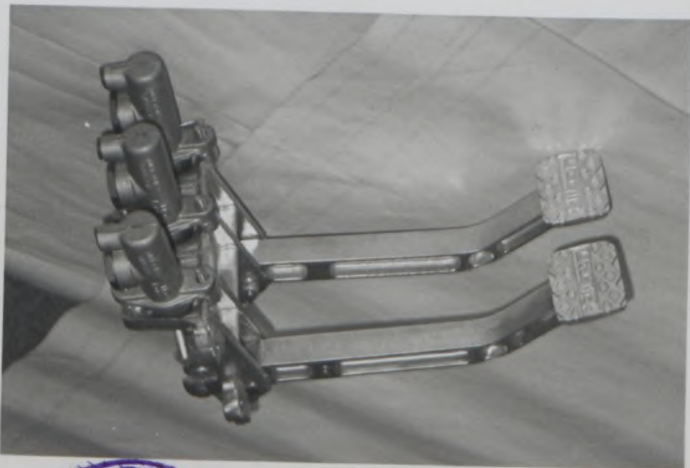


PHOTO No 9423



(*) FIA - Règlement 15 - 10.01.FB.10.90

FEDERATION INTERNATIONALE
DE L'AUTOMOBILE
8, Place de la Concorde, 8
75008 PARIS

13/18

Marque
Make

DAIHATSU

Modèle
Model

G201

Homologation No

A-5509

Extension No

01/01V0

0A-1/60 V0V01/1

PHOTO No 9424

PHOTO No 9425

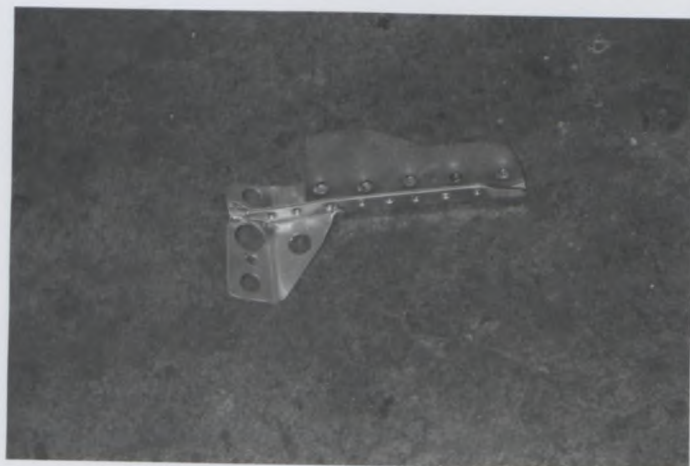
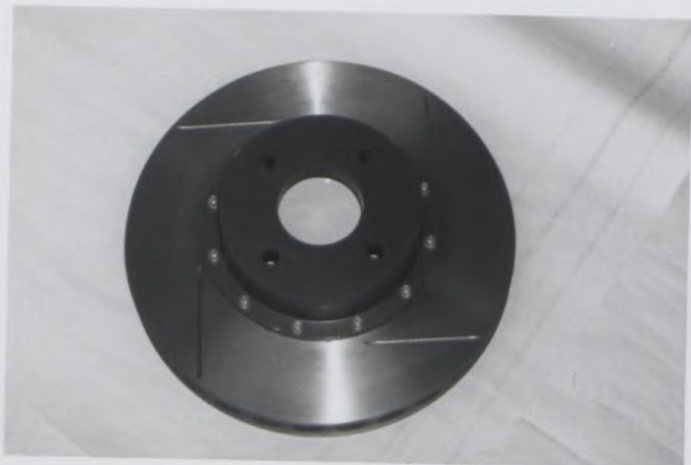


PHOTO No 9426

PHOTO No 9427



PHOTO No 9428

PHOTO No 9429



(s) FSA/F.O. 31/10/90 - 21/12/91, FB.10.90

FEDERATION INTERNATIONALE
DE L'AUTOMOBILE
8, Place de la Concorde, 8
75008 PARIS

14/18

Marque
Make

DAIHATSU

Modèle
Model

G20/

Homologation No

A-5509

Extension No

01/01V0

JA-165 V0- 1/1

PHOTO No 9430

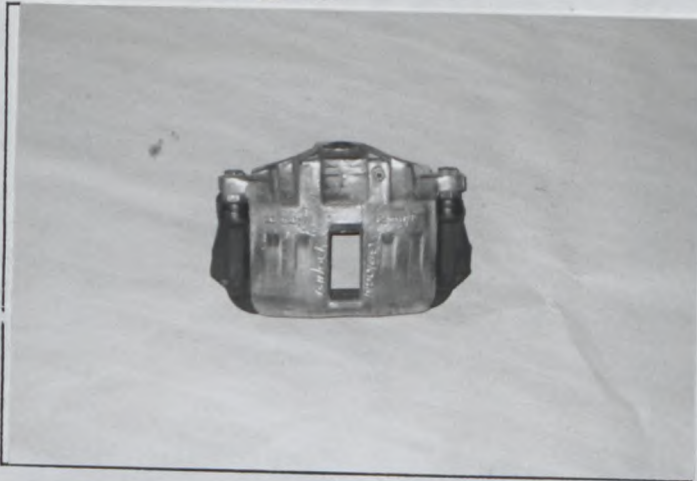


PHOTO No 9431

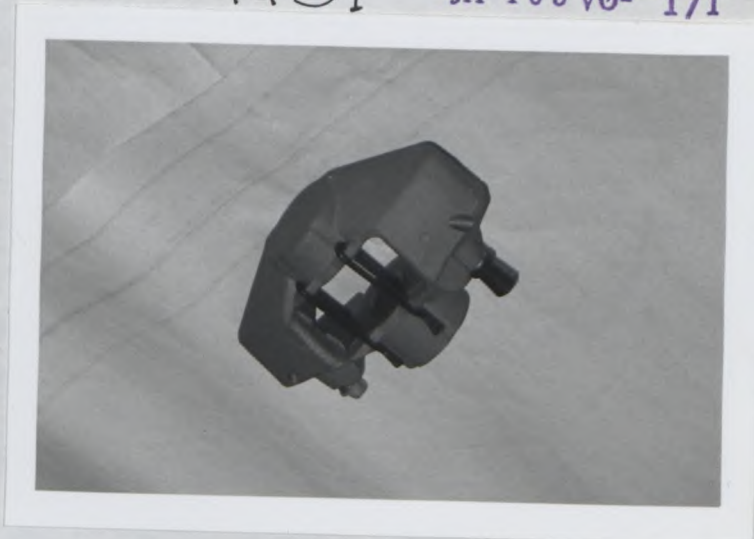


PHOTO No 9432



PHOTO No 9433



PHOTO No 9434



PHOTO No 9435



(c) FSA/F. Clémenton 1990 - 010.01.FB.10.90

FEDERATION INTERNATIONALE
DE L'AUTOMOBILE
8, Place de la Concorde, 8
75008 PARIS

15/18

Marque
Make

DAIHATSU

Modèle
Model

G-201

Homologation No

A-5509

Extension No

01/01V0

JA-165V0-1/1

PHOTO No 9436



PHOTO No 9437

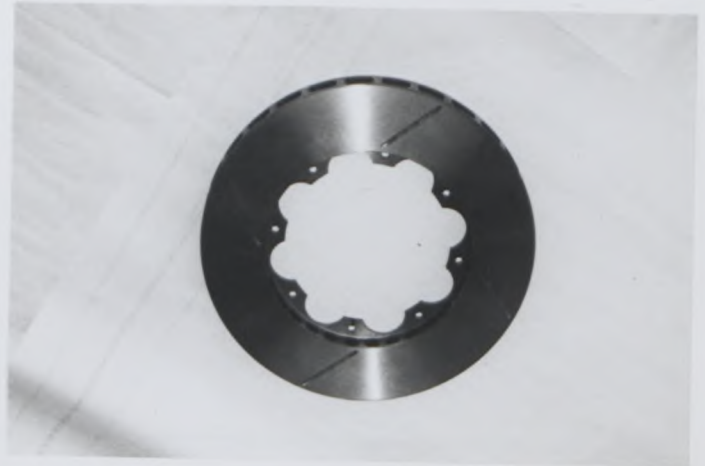


PHOTO No 9438

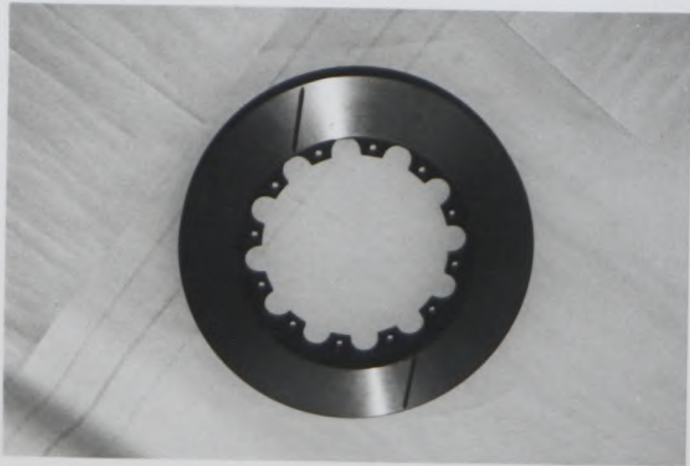


PHOTO No 9439



PHOTO No 9440



PHOTO No 9441



(c) FSA/F.Champagnon 1999-01/01/23.10.90

FEDERATION INTERNATIONALE
DE L'AUTOMOBILE
8, Place de la Concorde, 8
75008 PARIS

16/18

Marque
Make

DAIHATSU

Modèle
Model

G201

Homologation No

A-5509

Extension No

01/01V0

JA-165V0- 1/1

PHOTO No 9442



PHOTO No 9443



PHOTO No 9444



PHOTO No 9445



PHOTO No 9446

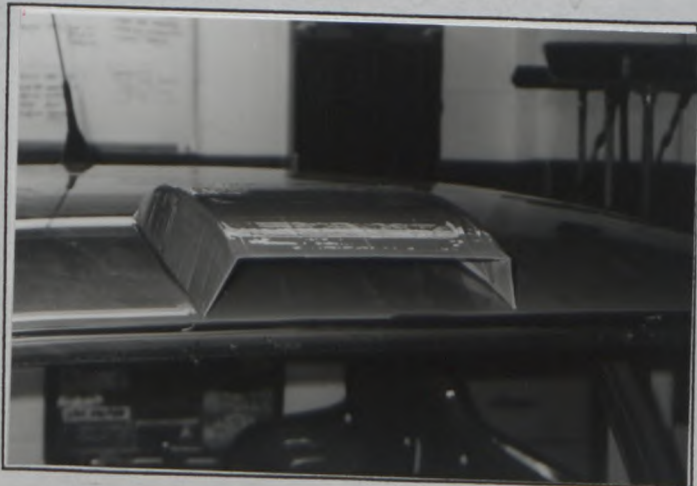


PHOTO No 9447



(c) FISA/F. Champigny 1990-0104/922.10.90

FEDERATION INTERNATIONALE
DE L'AUTOMOBILE
8, Place de la Concorde, 8
75008 PARIS

17/18

Marque Make DAIHATSU

Modèle Model G201

Homologation No
A-5509

Extension No
01/01V0

PHOTO No 9448

PHOTO No

JA-165V0- 1/1

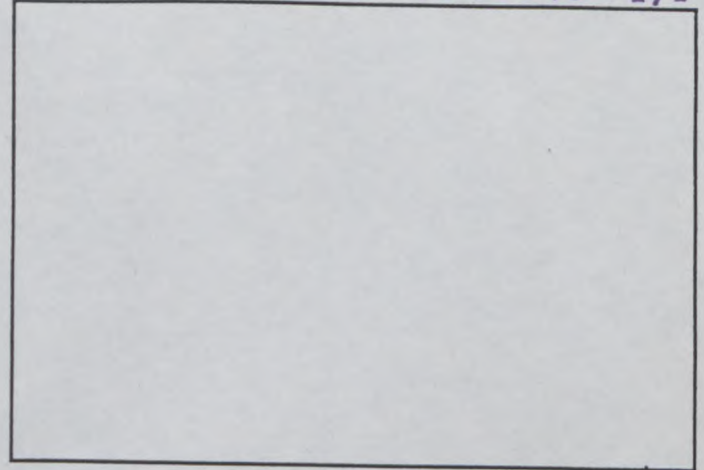


PHOTO No

PHOTO No

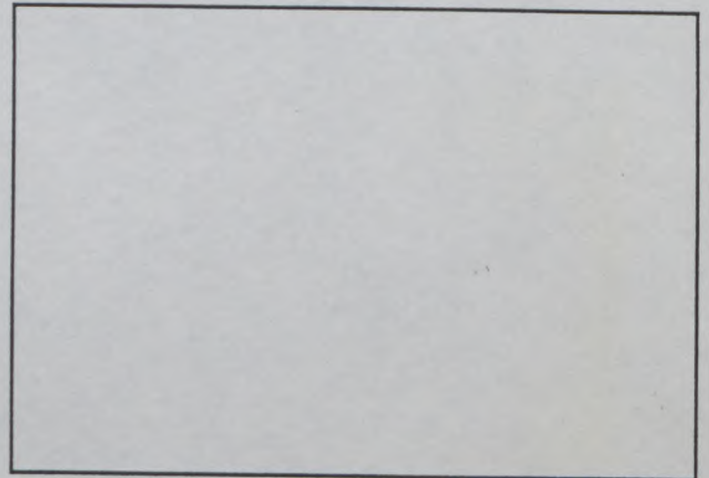
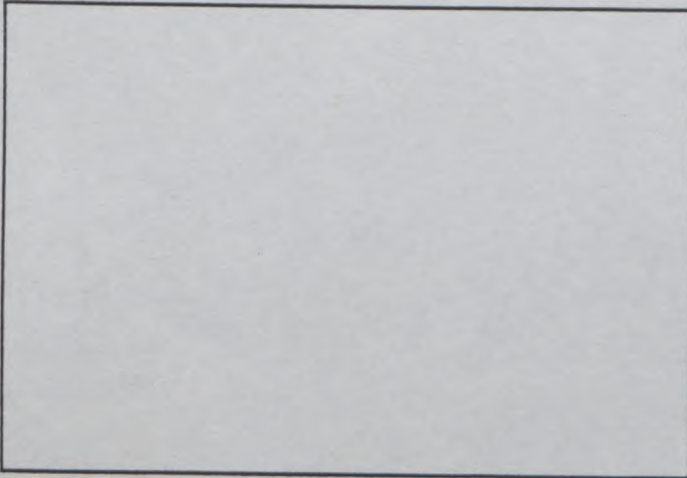
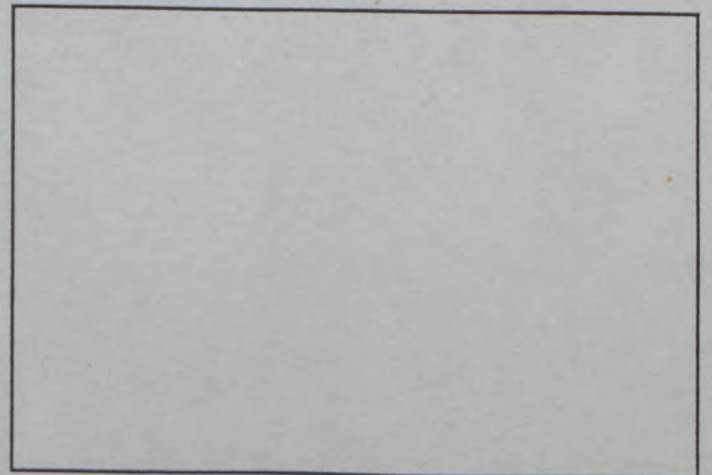
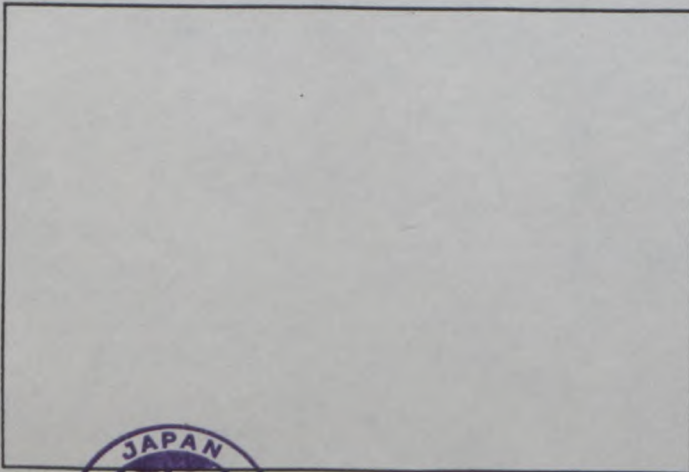


PHOTO No

PHOTO No





FEDERATION INTERNATIONALE
DE L' AUTOMOBILE
JAPAN AUTOMOBILE FEDERATION
社団法人 日本自動車連盟

FIA Homologation No.

A-5509

Extension No.

02/02V0



Groupes ~~A/B/N/TI/Supertourisme~~
Groupes ~~A/B/N/TI/Supertouring~~
グループ

JAF公認番号 JA-165V0-2/2

JAF発効年月日 1998年2月28日

FICHE D'EXTENSION D'HOMOLOGATION
FORMOF HOMOLOGATION EXTENSION
追加公認書式

- ES Evolution sportive du type/Sporting evolution of the type
スポーツ進化
- ET Evolution normale du type/ Normal evolution of the type
形式の正常進化
- VE Variante de fourniture/Supply variant
供給変型
- VO Variante option/Option variant
オプション変更
- ER Erratum/Erratum
誤記訂正

Vehicule; Constructeur

Vehicule; Manufactureur DAIHATSU MOTOR CO., LTD
車両:製造会社名

Modele et type CHARADE GTI(G201)

Model and type (CHARADE DETOMASO)
モデルと型式

Homologation valable a partir du

01 MARS 1998

Homologation valid as from

FIA公認発効年月日

Page ou ext. Page or ext. ページまたは補足	Article Article 項目	Description Description 記述
--	--------------------------	----------------------------------

12
13

6
603
e)

POWER TRAIN
Gear box
Ratios-3

	number of teeth	ratio	synchro
1	35 / 14	2.500	X
2	32 / 17	1.882	X
3	30 / 20	1.500	X
4	27 / 22	1.227	X
5	25 / 24	1.042	X
R	44 / 14	3.143	
constant	XXXX	XXXX	

14

605

Final drive

ratio	5.364	5.455	5.545	5.636	5.727
number of teeth	59/11	60/11	61/11	62/11	63/11

15

FEDERATION INTERNATIONALE (07 t)

DE L'AUTOMOBILE

8, place de la Concorde, 75008 Paris

Services Administratifs :

2 bis, rue Boissy d'Anglas, 75008 Paris

SUSPENSION

Reinforced front suspension arm. Type 5

Photo 1



Page ou ext. Page or ext. ページまたは補足	Article Article 項目	Description Description 記述																																				
16	8 803	<p>RUNNING GEAR</p> <p>Caliper mount bracket. Type 5 Photo 2 Brakes Front and/or rear brake caliper, lug or radial mount</p> <table border="1"> <tr><td>e) Number of cylinders per wheel</td><td>4</td></tr> <tr><td>e1: Bore</td><td>36mm to 42mm ±1mm</td></tr> <tr><td>g1: Number of pads per wheel</td><td>2</td></tr> <tr><td>g2: Number of caripers per wheel</td><td>1</td></tr> <tr><td>g3: Caliper material</td><td>Aluminum alloy</td></tr> <tr><td>g8: Overall length of pad</td><td>131mm ±1.5mm</td></tr> <tr><td>Part No:Left side</td><td>CBNR577</td></tr> <tr><td>Part No:Right side</td><td>CBNR576</td></tr> <tr><td>Photo No</td><td>3</td></tr> </table> <p>NOTE:Calipers may be fitted with or without stone protection shields.</p> <p>Front and/or rear disc, plain or grooved and/or cross drilled.</p> <table border="1"> <tr><td>g4: Thickness of new disc</td><td>24mm to 32mm ±1mm</td></tr> <tr><td>g5: External diameter</td><td>295mm to 305mm ±1.5mm</td></tr> <tr><td>External diameter of pad's</td><td></td></tr> <tr><td>g6: rubbing surface</td><td>295mm to 305mm ±1.5mm</td></tr> <tr><td>Internal diameter of pad's</td><td></td></tr> <tr><td>g7: rubbing surface</td><td>191mm to 203mm ±1.5mm</td></tr> <tr><td>g9: Ventilated discs</td><td>Yes</td></tr> <tr><td>Part No</td><td>CBNR575</td></tr> <tr><td>Photo No</td><td>4</td></tr> </table> <p>NOTE:The friction surface may be less than the disc area available.</p>	e) Number of cylinders per wheel	4	e1: Bore	36mm to 42mm ±1mm	g1: Number of pads per wheel	2	g2: Number of caripers per wheel	1	g3: Caliper material	Aluminum alloy	g8: Overall length of pad	131mm ±1.5mm	Part No:Left side	CBNR577	Part No:Right side	CBNR576	Photo No	3	g4: Thickness of new disc	24mm to 32mm ±1mm	g5: External diameter	295mm to 305mm ±1.5mm	External diameter of pad's		g6: rubbing surface	295mm to 305mm ±1.5mm	Internal diameter of pad's		g7: rubbing surface	191mm to 203mm ±1.5mm	g9: Ventilated discs	Yes	Part No	CBNR575	Photo No	4
e) Number of cylinders per wheel	4																																					
e1: Bore	36mm to 42mm ±1mm																																					
g1: Number of pads per wheel	2																																					
g2: Number of caripers per wheel	1																																					
g3: Caliper material	Aluminum alloy																																					
g8: Overall length of pad	131mm ±1.5mm																																					
Part No:Left side	CBNR577																																					
Part No:Right side	CBNR576																																					
Photo No	3																																					
g4: Thickness of new disc	24mm to 32mm ±1mm																																					
g5: External diameter	295mm to 305mm ±1.5mm																																					
External diameter of pad's																																						
g6: rubbing surface	295mm to 305mm ±1.5mm																																					
Internal diameter of pad's																																						
g7: rubbing surface	191mm to 203mm ±1.5mm																																					
g9: Ventilated discs	Yes																																					
Part No	CBNR575																																					
Photo No	4																																					
17	804	<p>Steering</p> <table border="1"> <tr><td>Ratio</td><td>11.2</td></tr> <tr><td>Power assisted</td><td>Yes</td></tr> <tr><td>Part No</td><td>CBN502</td></tr> <tr><td>Photo No</td><td>5</td></tr> </table>	Ratio	11.2	Power assisted	Yes	Part No	CBN502	Photo No	5																												
Ratio	11.2																																					
Power assisted	Yes																																					
Part No	CBN502																																					
Photo No	5																																					



FEDERATION INTERNATIONALE
DE L'AUTOMOBILE

8, place de la Concorde, 75008 Paris
Services Administratifs :
8 bis, rue Boissy d'Anglas, 75008 Paris

Marque
Make
会社名

DAIHATSU

Modele
Model
型式

G201

FIA Homologation No.

A-5509

Extension No.

02/02V0

JAF公認番号

JA-165V0-2/2

Photo No 1(reinforced Front suspension arm)

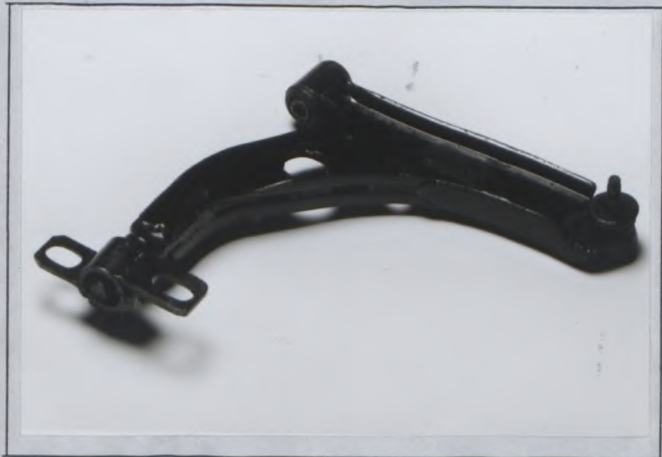


Photo No 2(Caliper mount bracket)

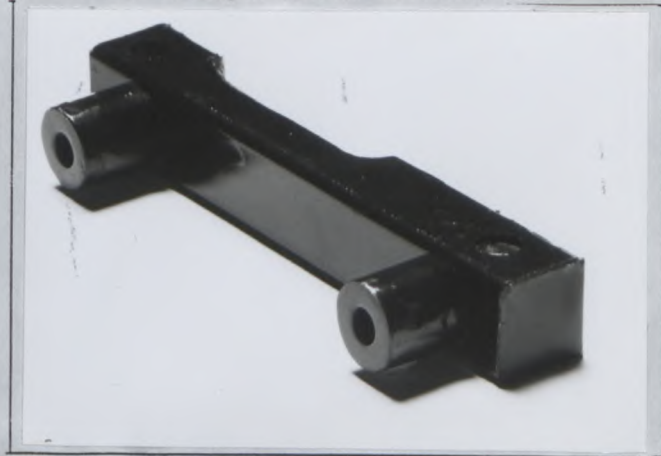


Photo No 3(Front and/or rear brake caliper)

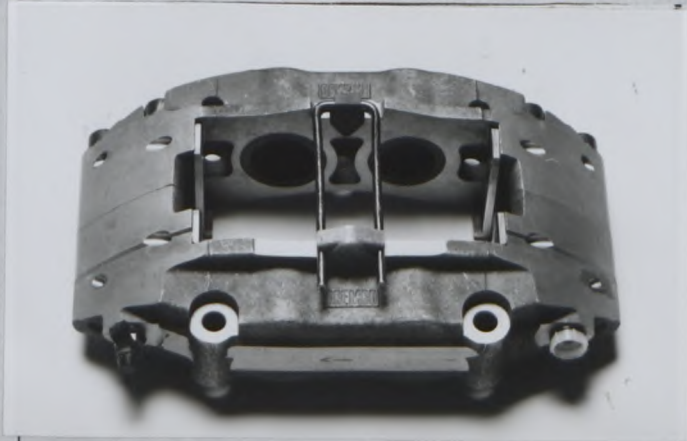


Photo No 4(Front and/or rear brake disc)



Photo No 5(Steering)



FEDERATION INTERNATIONALE
DE L'AUTOMOBILE

8, place de la Concorde, 75008 Paris

Services Administratifs :

8 bis, rue Boissy d'Anglas, 75008 Paris

