



JAPAN AUTOMOBILE FEDERATION

社団法人・日本自動車連盟

FEDERATION INTERNATIONALE DE L'AUTOMOBILE

JAF公認 T-164
グループ フォーリングカー
発効年月日 71.4月末日

F. I. A. Recognition No. [Redacted]
Group [Redacted] 1

5473
(ex 1624)

Form of recognition in accordance with
Appendix J to the International Sporting Code.
国際スポーツ法典付則J項及びJAF国内競技車両規則に従った公認書式。

Manufacturer 製造会社名 **NISSAN MOTOR Co., LTD.**

Serial No of chassis 製造開始シャシー番号 **E10-000001**

Serial No of engine 製造開始エンジン番号 **A10-000001**
Recognition is valid from **1/10/71**

Cylinder-capacity 総排気量
Reciprocation レシプロ 988 cm³ 6029 cu.in.
Special 特殊 cm³ cu.in.

Model 型式及び通称名 **E10 NISSAN CHERRY**

Manufacturer **NISSAN MOTOR CO., LTD.**

Manufacturer **NISSAN MOTOR CO., LTD.**

List **71/10**

The manufacturing of the model described in this recognition form was started on **June** 1970 and the minimum production of 1000 identical cars, in accordance with the specifications of this form was reached on **December** 1970

Photograph A, 3/4 view of car from front 写真A、全体写真(斜め前方)



The vehicle described in this form has been subject to the following amendments :

Variants

on	19	rec. No.	List
on	19	rec. No.	List
on	19	rec. No.	List
on	19	rec. No.	List
on	19	rec. No.	List

Normal evolution of the type

on	19	rec. No.	List
on	19	rec. No.	List
on	19	rec. No.	List
on	19	rec. No.	List
on	19	rec. No.	List

Stamp and signature of the JAF

JAF公認印及び署名

庭山博史

Hiroshi Niwayama

Stamp and signature of the F. I. A.

[Signature]

Make **NISSAN**

Model **E10**
型式

J.A.F.公認番号 **T-164**

F.I.A. Rec. No. **5473**

IMPORTANT - the underlined items must be stated in two measuring systems, one of which must be the metric system. See conversion table hereafter.

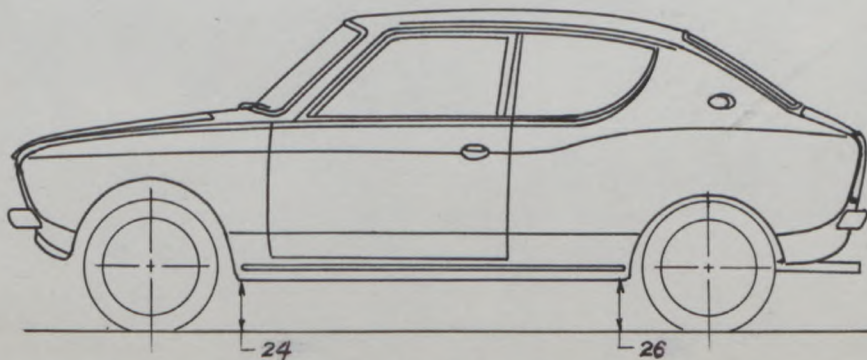
CAPACITIES AND DIMENSIONS
仕様諸元

1. <u>Wheelbase</u> ホイールベース	233.5	cm	91.9	inches
2. <u>Front track</u> トレッド(前)	127.0	cm	50.0	inches *
3. <u>Rear track</u> トレッド(後)	123.5	cm	48.6	inches *
4. Overall length of the car 全長		361	cm	inches
5. Overall width of the car 全幅		147	cm	inches
6. Overall height of the car 全高		138	cm	inches
7. <u>Capacity of fuel tank</u> (reserve included) 燃料タンク容量				36 ltrs Gallon Imp.
8. Seating capacity 定員	5			
9. <u>Weight, total weight of the car with normal equipment, water, oil and spare wheel but without fuel nor repair tools:</u> 車両重量 (冷却水、オイル、スペアタイヤを含む標準状態の車両重量、但し燃料、車載工具を除く)	590 kg		1301 lbs	cwt

* Differences in track caused by the use of other wheels with different rim widths must be stated when recognition is requested for the wheels concerned.

Specify ground clearance in relation to the track and give drawing of two fixed points of the vehicle's structure at which measurements are taken.

These ground clearance dimensions are only for information when checking the track and can in no way affect the eligibility of the car.



Width of the car measured in the vertical plane passing through the axle of the wheels.

車軸上の車体幅	Front フロント	148 147	cm	Rear リア	147	cm
---------	---------------	-----------------------	----	------------	-----	----

CONVERSION TABLE

1 inch / pouce	--	2.54 cm	1 quart US	--	0.9464 ltrs
1 foot / pied	--	30.4794 cm	1 pint (pt)	--	0.568 ltrs
1 square inch / pouce carre	--	6.452 cm ²	1 gallon Imp.	--	4.546 ltrs
1 cubic inch / pouce cube	--	16.387 cm ³	1 gallon US	--	3.785 ltrs
1 pound / livre (lb)	--	453.593 gr.	1 hundred weight (cwt)	--	50.802 kg

Make **NISSAN**

Model **E10**
型式

J.A.F.公認番号 **T-164**

F.I.A. Rec. No. **624**

5473

CHASSIS AND COACHWORK (Photographs A, B and C)

シャーシー、ボデー

- 20. Chassis/body construction : ~~separate~~ / unitary construction
シャーシー/ボディーの構造 ~~×××××~~ / 一体構造
- 21. Unitary construction, material (s) *Steel*
一体構造の場合その材質
- 22. Separate constructions: material (s) of chassis
セパレート構造の場合その材質
- 23. Material (s) of coachwork
ボディーの材質
- 24. Number of doors **2** Material (s) *Steel*
ドアの数 材質
- 25. Material (s) of bonnet *Steel*
ボンネットの材質
- 26. Material (s) of boot lid *Steel*
トランクリッドの材質
- 27. Material (s) of rear-window *Glass*
リヤウインドシールドの材質
- 28. Material (s) of windscreen *Glass*
フロントウインドシールドの材質
- 29. Material (s) of front-door windows *Glass*
フロントドアウインドーの材質
- 30. Material (s) of rear-door windows
- 31. Sliding system of door windows *Vertical manual*
ドアウインドーの開閉方式
- 32. Material (s) of rear-quarter light *Glass*
リヤクォーターウインドーの材質

ACCESSORIES AND UPHOLSTERY

アクセサリ

- 38. Interior heating : ~~yes~~ - no
- 39. Air-conditioning : ~~yes~~ - no
- 40. Ventilation : yes - ~~no~~
- 41. Front seats, type of seats and upholstery *Separate vinyl*
- 42. Weight of front seat (s), complete with supports and rails, out of the car :
9 kg × 2 lbs
- 43. Rear seats, type of seats and upholstery *Bench vinyl*
- 44. Front bumper, material (s) *Steel* Weight **2.0** kg lbs
フロントバンパーの材質 重量
- 45. Rear bumper, material (s) *Steel* Weight **2.0** kg lbs
リヤバンパーの材質 重量

WHEELS

ホイール

- 50. Type *Pressed steel*
形式
- 51. Weight (per wheel, without tyre) **4.5** kg lbs
重量
- 52. Method of attachment *4 nuts*
取付け方法
- 53. Rim diameter **305** mm **12** inches
リム径
- 54. Rim width **102** mm **4** inches
リム幅

STEERING

ステアリング

- 60. Type *Rack and pinion*
形式
- 61. Servo-assistance : ~~yes~~ - no
パワーステアリング ~~有~~ - 無
- 62. Number of turns of steering wheel from lock to lock ~~3.2~~ **3.2**
ロックツアロック
- 63. In case of servo-assistance



Make **NISSAN**

Model **E10**
型式

J·A·F公認番号

T-164

F.I.A. Rec. No.

5473

SUSPENSION

サスペンション

70. Front suspension (photogr. D), type **Mc Pherson**
フロントサスペンションの形式
71. Type of spring **Coil**
スプリングの種類
72. Stabiliser (if fitted)
73. Number of shockabsorbers **2** 74. Type **Hydraulic telescopic**
ショックアブソーバーの数 形式
78. Rear suspension (photogr. E), type **Trailing arm**
リヤサスペンションの形式
79. Type of spring **Coil**
スプリングの種類
80. Stabiliser (if fitted)
81. Number of shockabsorbers **2** 82. Type **Hydraulic telescopic**
ショックアブソーバーの数 形式

BRAKES (photographs F and G)

ブレーキ

90. System **Hydraulic**
作動方式
91. Servo-assistance (if fitted), type
92. Number of hydraulic master cylinders **1**
マスターシリンダーの数

93. Number of cylinders per wheel
ホイール当りのシリンダー数

94. Bore of wheel cylinder (s)
ホイールシリンダーの内径

Drum Brakes

ドラムブレーキ

95. Inside diameter
ドラムの内径

96. Length of brake linings
ライニングの長さ

97. Width of brake linings
ライニングの幅

98. Number of shoes per brake
ブレーキ当りのシューの数

99. Total area per brake
1ブレーキ当りの総摩擦面積

Disc brakes

ディスクブレーキ

100. Outside diameter
ディスクの外径

101. Thickness of disc
ディスクの厚さ

102. Length of brake linings
パッドの長さ

103. Width of brake linings
パッドの幅

104. Number of pads per brake,
ブレーキ当りのパッドの数

105. Total area per brake
1ブレーキ当りの総摩擦面積

FRONT
フロント

REAR
リヤ

2

1

222

mm

in. 17.4

mm

in.

203

mm

in. 180

mm

in.

195

mm

in. 173

mm

in.

35

mm

in. 30

mm

in.

2

2

13,650

mm²

sq. in. 10,380

mm²

sq. in.

mm

in.

mm

in.

mm

in.

mm

in.

mm

in.

mm

in.

mm

in.

mm

in.

mm²

sq. in.

mm²

sq. in.



Make **NISSAN**

Model **E10**
型式

J·A·F公認番号
F.I.A. Rec. No.

T-164
5473

ENGINE (photographs J and K) **

130. Cycle サイクル	4	131. Number of cylinders シリンダー数	4
132. Cylinder arrangement シリンダー配列	<i>In-line</i>		
133. Bore ボア	73 mm	134. Stroke ストローク	59 mm
135. Capacity per cylinder 1シリンダーの排気量	2.87		2.32 in.
136. Total, cylinder-capacity 総排気量	988 cm ³		15.07 cu. in.
137. Material (s) of cylinder block シリンダーブロックの材質			60.29 cu. in.
138. Material (s) of sleeves (if fitted) スリーブの材質			<i>Cast iron</i>
139. Cylinder-head, material (s) シリンダーヘッドの材質			<i>Aluminum alloy</i>
140. Number of inlet ports 吸気孔の数	4	141. Number of exhaust ports 排気孔の数	4
142. Compression ratio	9.0		Number fitted 1
143. Volume of one combustion chamber			25.4 cm ³
144. Piston, material ピストンの材質	<i>Aluminum alloy</i>	145. Number of rings リングの数	3
146. Distance from gudgeon pin centre line to highest point of piston crown	33 mm		inches
147. Crankshaft : mounted / stamped クランクシャフト : 鍛造 / 鍛造		148. Type of crankshaft : integral / XXXX クランクシャフトの形式 : 一体式 /	
149. Number of crankshaft main bearings メインベアリングの数	3		
150. Material of bearing cap ベアリングキャップの材質	<i>Cast iron</i>		
151. System of lubrication : dry sump / oil in sump 潤滑方式 : ドライサンプ / ウェットサンプ			
152. Capacity, lubricant 潤滑油量	3.3 ltrs		pts quarts US
153. Oil cooler : yes / no オイルクーラー : 有 / 無		154. Method of engine cooling エンジン冷却方式	<i>Water</i>
155. Capacity of cooling system	4.1 ltrs		pints quarts US
156. Cooling fan (if fitted), dia.	290 mm		inches
157. Number of blades of cooling fan	6		

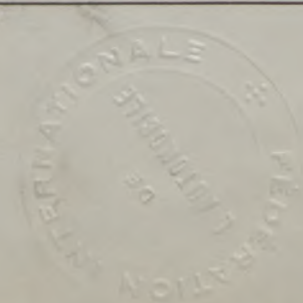
Bearings **

158. Crankshaft main, type メインベアリングの形式	<i>Plain</i>	Dia. 内径	50 mm	in.
159. Connecting rod big end, コンロッド大端部ベアリングの形式	<i>Plain</i>	Dia. 内径	45 mm	in.

Weights **

160. Flywheel (clean)	4.5 kg	lbs
161. Flywheel with clutch (all turning parts)	10.7 kg	lbs
162. Crankshaft	9.8 kg	lbs
163. Connecting rod	0.41 kg	lbs
164. Piston with rings and pin	0.34 kg	lbs

** for additional information concerning Wankel rotary engines see page 15, 16
ロータリーエンジンは15、16頁参照



Make **NISSAN**

Model **E10**
型式

J·A·F 公認番号 **T-164**
F.I.A. Rec. No. **[REDACTED]**
5473

FOUR STROKE ENGINES *, **
4サイクルエンジン

- 170. Number of camshafts **1**
- 171. Location **Cylinder brock**
カムシャフトの位置
- 172. Type of camshaft drive **Chain**
カムシャフトの駆動方式
- 173. Type of valve operation **Push rod**
バルブの作動方式

INLET (see page 8) *, **
吸気系

- 180. Material(s) of inlet manifold **Aluminum alloy**
マニホールドの材質
- 181. Diameter of valves **35 mm** **1.38 inches**
バルブの径
- 182. Max. valve lift **8 mm** **0.31 in.**
- 183. Number of valve springs **1**
バルブスプリングの数
- 184. Type of spring **Coil**
- 185. Number of valves per cylinder **1**
シリンダー当りのバルブの数
- 186. Tappet clearance for checking timing (cold) **0.35 mm** **inches**
- 187. Valves open at (with tolerance for tappet clearance indicated) **B,T,D,C 12°±7°**
- 188. Valves close at (with tolerance for tappet clearance indicated) **A,F,D,C 48°±7°**
B
- 189. Air filter, type **Dry**

EXHAUST (see page 8) *, **
排気系

- 195. Material (s) of exhaust manifold **Cast iron**
マニホールドの材質
- 196. Diameter of valves **29 mm** **1.14 inches**
バルブの径
- 197. Max. valve lift **8 mm** **0.31 in.**
- 198. Number of valve springs **1**
バルブスプリングの数
- 199. Type of spring **Coil**
- 200. Number of valves per cylinder **1**
シリンダー当りのバルブの数
- 201. Tappet clearance for checking timing (cold) **0.35 mm** **inches**
- 202. Valves open at (with tolerance for tappet clearance indicated) **B,B,D,C 50°±7°**
- 203. Valves close at (with tolerance for tappet clearance indicated) **A,T,D,C 10°±7°**

CARBURETION (photograph N)
気化器

- 210. Number of carburetors fitted **1**
- 211. Type **Down - draft**
形式
- 212. Make **HITACHI**
- 213. Model **DCG - 286 - 4**
型式
- 214. Number of mixture passages per carburettor **2**
- 215. Flange hole diameter of exit port(s) of carburettor **26 & 28 mm** **in.**
キャブレター出口内径
- 216. Minimum dimensions of mixture passage(s) ~~XXXXXXXXXXXXXXXXXXXXXXXXXXXX~~
ベンチュリーの最小寸法 **20 & 24 mm** **inches**

INJECTION (if fitted)
燃料噴射

- 220. Make of pump
- 221. Number of plungers
- 222. Model or type of pump
- 223. Total number of injectors
- 224. Location of injectors
- 225. Minimum diameter of inlet pipe **mm** **inches**
吸気管の最小径

*) for additional information concerning two-stroke engines and super-charged engines see page 14.
2サイクルエンジン、過給機付エンジンは14頁参照

**) for additional information concerning Wankel rotary engines see page 15, 16.
ロータリーエンジンは15, 16頁、参照



Make **NISSAN**

Model **E10**
型式

J·A·F公認番号 **T-164**

F.I.A. Rec. No. **5473**

ENGINE ACCESSORIES

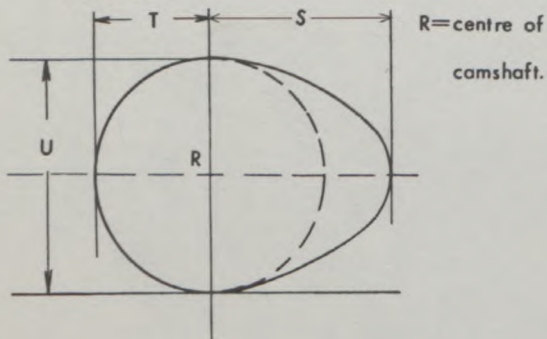
エンジン補機

- 230. Fuel pump : mechanical ~~and~~ ~~or~~ electric
燃料ポンプ 機械式/電式
- 232. Type of ignition system **Make and break**
点火方式
- 234. No. of ignition coils **1**
コイルの数
- 236. Generator, type: ~~dyno~~/alternator-number fitted **1**
発電機 直流/交流 数
- 238. Voltage of generator **12** volts
- 240. Location **Engine room**
バッテリー位置
- 241. Voltage of battery **12** volts
バッテリー電圧
- 231. No. fitted **1**
ポンプの数
- 233. No. of distributors **1**
ディストリビューターの数
- 235. No. of spark plugs per cylinder ~~xxxx~~ **1**
シリンダー当りのプラグ数(XXXXXX)
- 237. Method of drive **V - Belt**
駆動方式
- 239. Battery, number **1**
バッテリーの数

ENGINE AND CAR PERFORMANCES (as declared by manufacturer in catalogue)

- 250. Max. engine output **58 Ps** (type of horsepower: **JIS**) at **6000** rpm
- 251. Maximum rpm **6200 rpm** output at that figure **57.8 Ps**
- 252. Maximum torque **8.0 Kg - m** at **4000** rpm
- 253. Maximum speed of the car **140** km/hour **miles / hour**

255. Cam profile
カムプロフィール



Inlet cam

吸気カム

S =	20.9	mm	0.82	inches
T =	15.6	mm	0.61	inches
U =	31.2	mm	1.23	inches

Exhaust cam

排気カム

S =	20.9	mm	0.82	inches
T =	15.6	mm	0.61	inches
U =	31.2	mm	1.23	inches

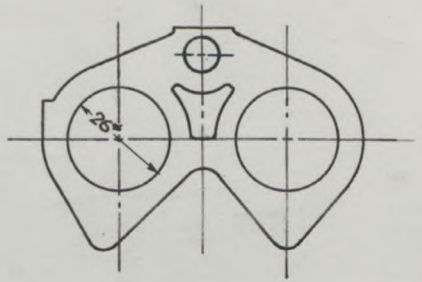


Make **NISSAN**

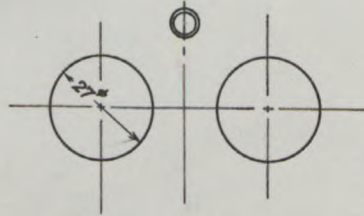
Model **E10**
型式

J·A·F公認番号 **T-164**
F.I.A. Rec. No. **[REDACTED]**
5473

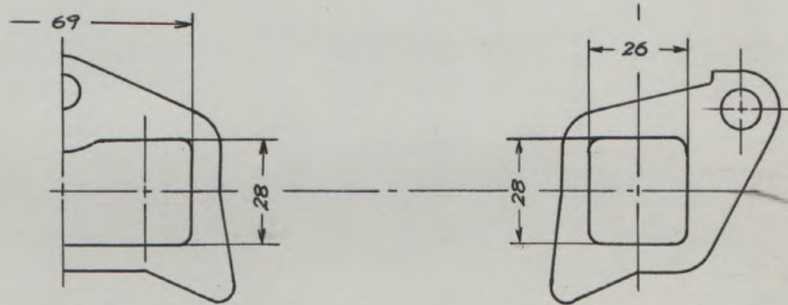
Drawing inlet manifold ports, side of cylinder-head/~~housing~~.
scale or dimensions and manufacturing tolerance.



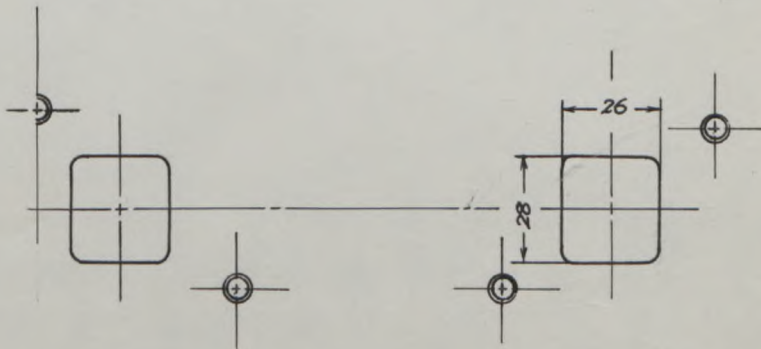
Drawing of entrance to inlet port of cylinder-head/~~housing~~.
scale or dimensions and manufacturing tolerance.



Drawing exhaust manifold ports, side of cylinder-head/~~housing~~.
scale or dimensions and manufacturing tolerance.



Drawing of exit to exhaust port of cylinderhead/~~housing~~.
Indicate scale or dimensions and manufacturing tolerance.



Unit: mm
Tolerance: ± 1.5



Make **NISSAN**

Model **E10**
型式

J·A·F公認番号 **T-164**

F.I.A. Rec. No. **[REDACTED]**

5473

DRIVE TRAIN

駆動系

CLUTCH

クラッチ

260. Type of clutch **Dry Plate**
形式

261. No. of plates **1**
プレッシャープレートの数

262. Dia. of clutch plates **166** mm inches
プレッシャープレートの外径

263. Dia. of linings, inside **110** mm in. outside **160** mm in.
フェーシングの内径 外径

264. Method of operating clutch **Mechanical**
作動方式

GEAR BOX (photograph H)

トランスミッション

270. Manual type, make **NISSAN**
手動式の製造会社名

Method of operation **Mechanical**
作動方式

271. No. of gear-box ratios forward **4**
前進段数

272. Synchronized forward ratios **1, 2, 3 & 4**

273. Location of gear-shift **Floor**
シフトレバーの位置

274. Automatic, make **[blank]** type
自動式の製造会社名 形式

275. No. of forward ratios **[blank]** 276. Location of gear-shift **[blank]**
前進段数 シフトレバーの位置

277.	Manual 手動		Automatic 自動		Alternative manual/automatic 手動/自動			
	Ratio ギヤー比	No. teeth 歯数	Ratio ギヤー比	No. teeth 歯数	Ratio ギヤー比	No. teeth 歯数	Ratio ギヤー比	No. teeth 歯数
1	3.67	$\frac{34}{18} \times \frac{35}{18}$			3.01	$\frac{31}{20} \times \frac{35}{18}$		
2	2.22	$\frac{34}{18} \times \frac{27}{23}$			1.97	$\frac{31}{20} \times \frac{28}{22}$		
3	1.45	$\frac{34}{18} \times \frac{23}{30}$			1.38	$\frac{31}{20} \times \frac{25}{28}$		
4	1.00				1.00			
5								
6								
reverse リバース	4.09	$\frac{34}{18} \times \frac{16}{18} \times \frac{32}{16}$			3.36	$\frac{31}{20} \times \frac{16}{18} \times \frac{32}{16}$		

278. Overdrive, type

オーバードライブ形式

279. Forward gears on which overdrive can be selected

オーバードライブの作動段数

280. Overdrive ratio

オーバードライブ比

FINAL DRIVE

ファイナル

290. Type of final drive **Herical gear**
形式

291. Type of differential **Bevel gear**
差動機形式

292. Type of limited slip differential (if fitted)

リミテッドスリップデフの形式

293. Final drive ratio **4.29** **4.43**
ギヤー比

Number of teeth **60/14** **62/14**
歯数



Make *NISSAN*

Model *E10*
型式

J·A·F公認番号 *T-164*

F.I.A. Rec. No. *624*
5473

Optional equipment affecting preceding information. This to be stated together with reference number.
オプション:

The following items have been added

VALID FOR GROUP 2 ONLY

E10 Deluxe = 610kg

Photograph A 3/4 View, front



Photograph B 3/4 View rear



*Optional equipment
Photograph over fender front*



Photograph over fender rear



Parts No. R/H 63860-M0820
L/H 63861-M0820

R/H 63862-M0820
L/H 63863-M0820



Make NISSAN

Model E10
型式

J.A.F 公認番号 T-164

F.I.A. Rec. No. [REDACTED]

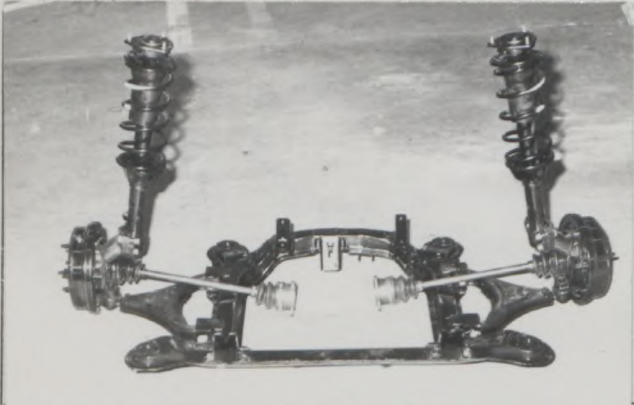
5473

Photograph

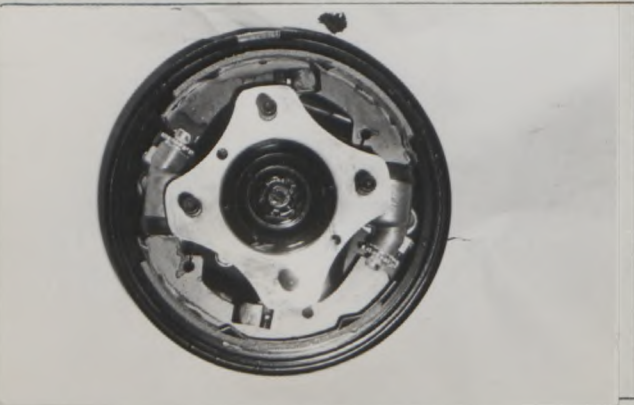
B, 3/4 view of car from rear 全体写真 (斜め後方)



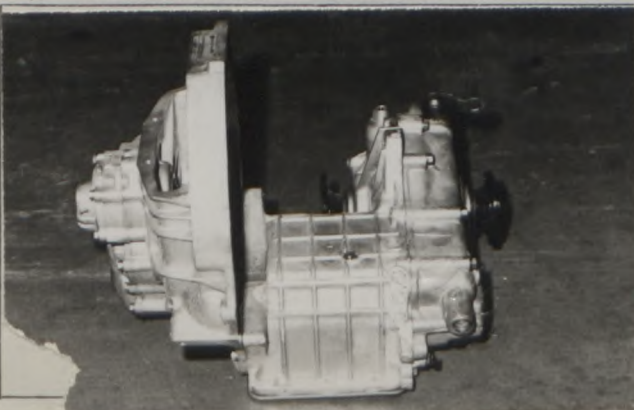
D, Front axle complete, removed from car. Without wheels.
フロントサスペンション



F, Front brake, drum removed or disc with calipers
フロントブレーキ



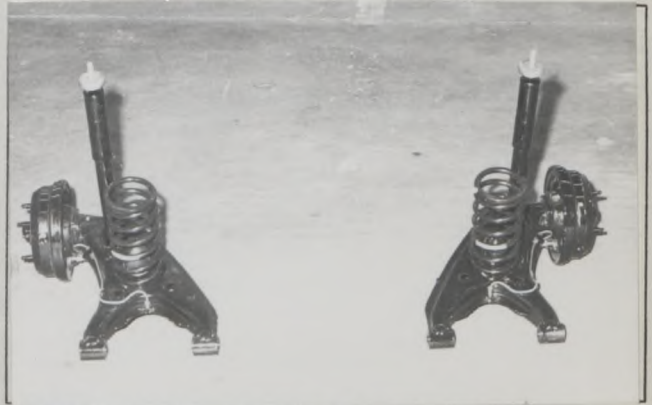
H, Gear-box, view from side トランスミッション



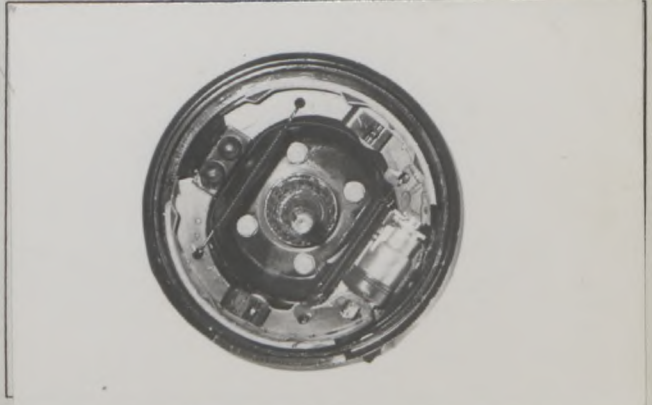
C, Interior view of car through driver's door (open or removed) with dashboard 運転席附近



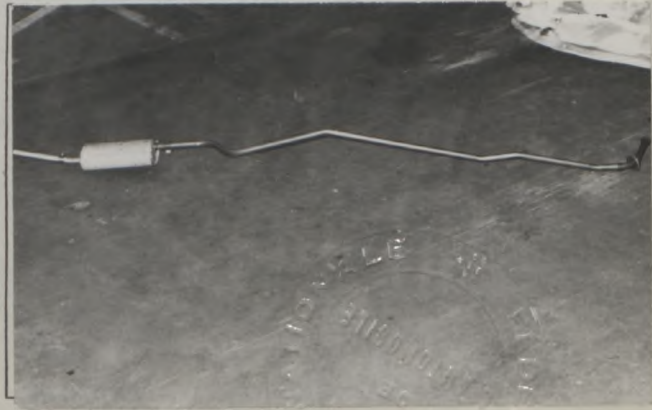
E, Rear axle complete without wheels, removed from car.
リヤサスペンション



G, Rear brake, drum removed or disc with calipers
リヤブレーキ



I, Silencer + exhaust pipes after exhaust manifold. 排気系



Make **NISSAN**

Model 型式 **E10**

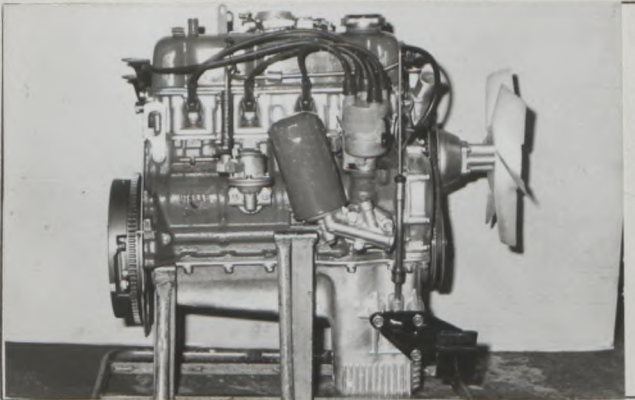
J·A·F公認番号 **T-164**

F.I.A. Rec. No. **[Redacted]**

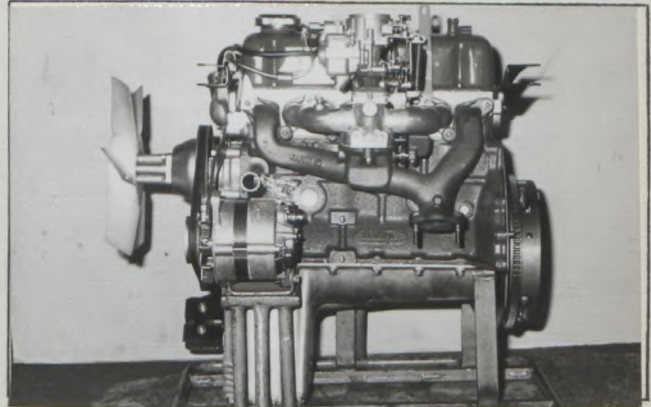
5473

Photograph

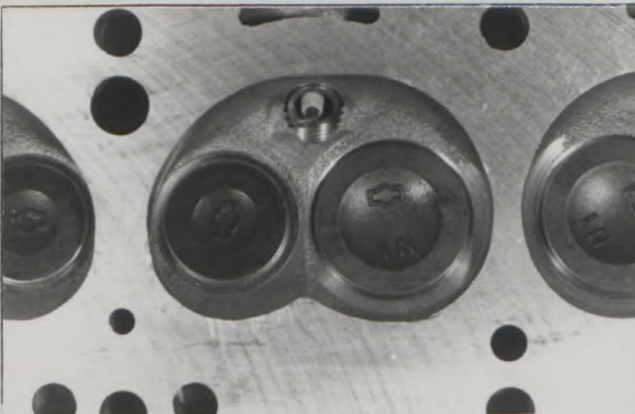
Engine unit out of car, from right. With clutch and accessories but without air filter nor gear-box. エンジン右側面



Engine unit out of car, from left. With clutch and accessories but without gear-box nor air filter. エンジン左側面



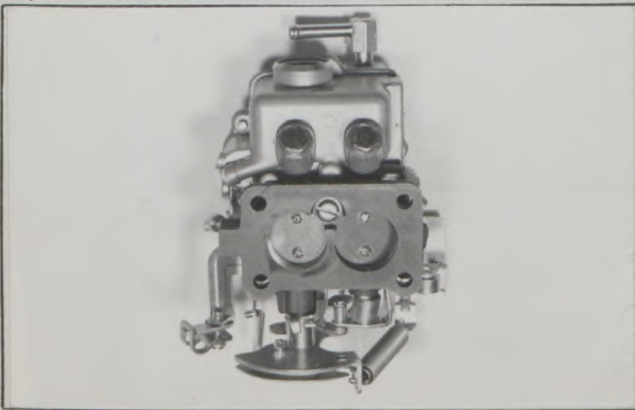
L, Combustion chamber 燃焼室 / ~~Rotor housing~~



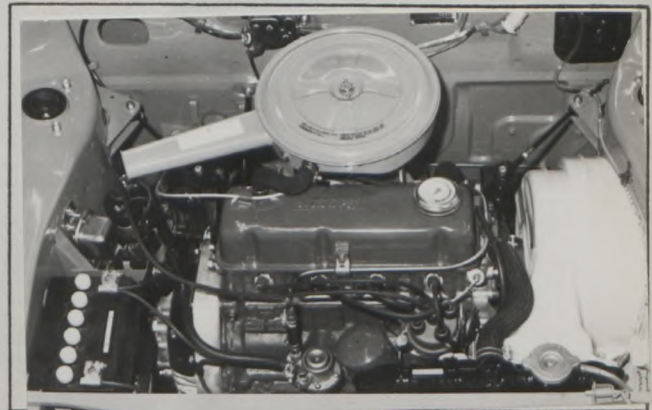
M, Piston crown ピストンクラウン / ~~Rotor frank~~



N, Carburettor (view from side of manifold) 気化器



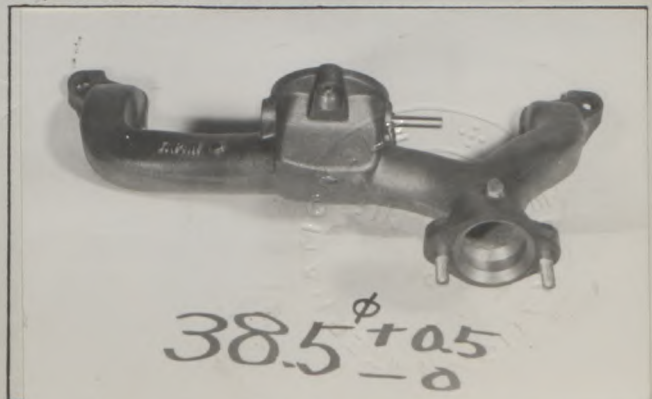
O, Engine in car with all accessories, bonnet open or removed. エンジンルーム



P, Inlet manifold 吸気マニホールド

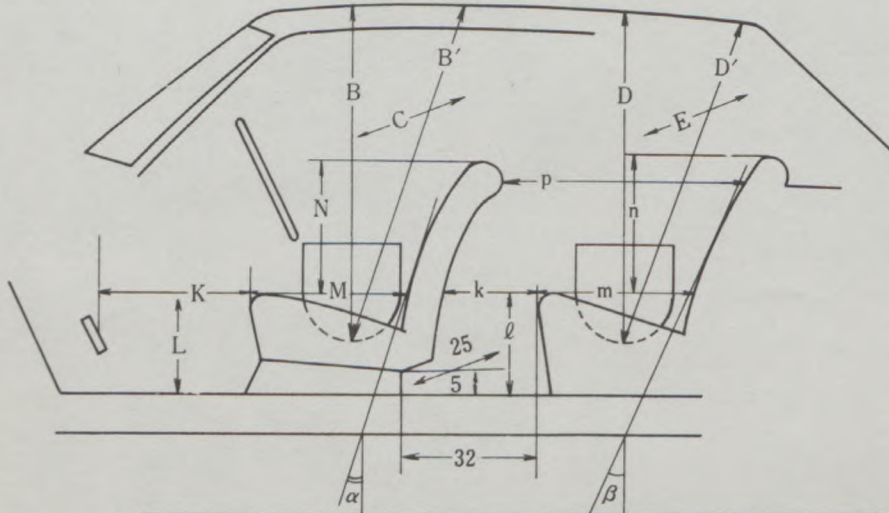


Q, Exhaust manifold 排気マニホールド



DIMENSIONS OF INTERIOR
室内寸法
(Conform to Art. 253 b of Appendix J)

For four seaters:
4座席



Minimum Dimensions (cm)							
B	B'	α	C	D	D'	β	E
92	100	225°	126	925	945	225°	125

Minimum Dimensions (cm)										
L	l	M	m	N	n	k+m	p	k	k+l+m	K+L+M
31.0	30.5	44.5	44.0	43.5	36	64.5	72.5	20.5	95.0	120.5
0.9L = 28		0.85M = 38.0		0.8N = 35.0		0.8(k+m) = 52.0		(15)	(95)	(120)

For two seaters:
2座席

Minimum Dimensions	
B	C
cm	cm





JAPAN AUTOMOBILE FEDERATION

社団法人 日本自動車連盟

T-164E-1

J.A.F. 公認番号
発効年月日

47. 4. 30

F. I. A. Homol. No.

5473 1/1A

FEDERATION INTERNATIONALE DE L'AUTOMOBILE

Form of recognition accordance with
Appendix J to the International Sporting Code.

国際スポーツ法典付則J項及びJAF国内競技車両規則に従った公認書式。

Make	NISSAN MOTOR CO., LTD.	Model	E10 (NISSAN CHERRY)	
製造会社名		型式及び通称名		
Modification's application starts with serial		No.	chassis	適用シャーシー番号
			engine	適用エンジン番号
			E10-000001	A10-000001
Application of this amendment started the	JAN. 1970			
適用年月日				
Commercial denomination after application of modifications				
The modifications are to be considered as:	Variant / normal	evolution of the type		
	変型 / 正常進化			
Date amendment is valid from				List

Description of amendment 内容

Changing group of FIA homologation.

Group 2 → Group 1

The following items have been added.

4 door model

Photograph A.3/4 view, front

Photograph B.3/4 view, rear



9. Weight (4 door model)

605 kg, 1,336 lb

Stamp and signature of the JAF

JAF公認印及び署名

三井平八郎
Heihachiro Mitsui



Stamp and signature of the F.I.A.



JAPAN AUTOMOBILE FEDERATION

社団法人 日本自動車連盟

J.A.F公認番号 T-164 v-3

発効年月日 47.10.31

F. I. A. Homol. No 5473

2/2V

FEDERATION INTERNATIONALE DE L'AUTOMOBILE

Form of recognition accordance with Appendix J to the International Sporting Code.

国際スポーツ法典付則J項及びJAF国内競技車両規則に従った公認書式。

Make NISSAN MOTOR CO., LTD.
製造会社名

Model E10 (NISSAN CHERRY)
型式及び通称名

Modification's application starts with serial No.

chassis 適用シャーシー番号 KE10-000001
engine 適用エンジン番号 A10-000001

Application of this amendment started the DEC. 1971
適用年月日

Commercial denomination after application of modifications KE10

The modifications are to be considered as: Variant / ~~normal evolution of the type~~
変型 / ~~改良進化~~

Date amendment is valid from

List

Description of amendment 内容

The following items have been added.

WHEELS

51. Weight (per wheel, without tyre) 5.1 Kg

54. Rim width 114 mm 4½ inches

BRAKES

Disc brake

Front

Photograph F.

94. Bore of wheel cylinder. 47.6 mm
100. Outside diameter, 200 mm

Front brake drum removed or disc with caliper(s).

101. Thickness of disc. 10 mm

102. Length of brake linings, 109 mm

103. Width of brake linings, 37 mm

104. Number of pads per brake. 2

105. Total area per brake. 6400 mm²



Stamp and signature of the JAF

Stamp and signature of the F.I.A.

JAF公認印及び署名

三井平八郎

Heihachiro Mitsui



COUPE MODEL (KE10)

Photograph

A. 3/4 view of car from front



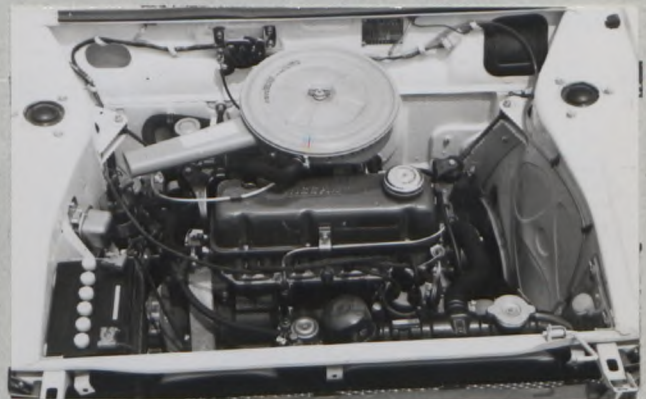
B. 3/4 view of car from rear



C. Interior view



D. Engine in car with all accessories, bonnet opened or removed



CAPACITIES AND DIMENSIONS

4. Overall length of the car	369.0 cm
5. Overall width of the car	149.0 cm
6. Overall height of the car	131.5 cm
9. <u>Weight</u> 645 Kg	1423 lbs

Width of the car measured in the vertical plane passing through the axle of the wheels.

Front 149.0 cm

ACCESSORIES AND UPHOLSTERY

38. Interior heating yes



Make NISSAN

Model E10
型式

J·A·F 公認番号

T-164 y-3

F.I.A. Rec. No.

5473

42. Weight of front seat(s), complete with supports and rails, out of the car

12 Kg x 2

lbs

ENGINE

156. Cooling fan dia

190 mm

157. Number of blades of cooling fan

5





JAPAN AUTOMOBILE FEDERATION

社団法人 日本自動車連盟

J.A.F 公認番号 T-164 E-2
発効年月日 47.10.31
F. I. A. Homol. No 5473

3/1E

FEDERATION INTERNATIONALE DE L'AUTOMOBILE

Form of recognition accordance with
Appendix J to the International Sporting Code.

国際スポーツ法典付則J項及びJAF国内競技車両規則に従った公認書式。

Make NISSAN MOTOR CO., LTD. 製造会社名	Model E10 (NISSAN CHERRY) 型式及び通称名
Modification's application starts with serial	No. chassis 適用シャーシー番号 E10-063001 engine 適用エンジン番号 A10

Application of this amendment started the Nov. 1971
適用年月日

Commercial denomination after application of modifications

The modifications are to be considered as: ~~Variation~~ / normal evolution of the type
変形 / 正常進化

Date amendment is valid from

List

Description of amendment 内容

The following items have added.

Photograph

2 Door Model

A. ¾ view of car from front



B. ¾ view of car from rear



Stamp and signature of the JAF

JAF公認印及び署名

三井平八郎

Heihachiro Mitsui



Stamp and signature of the F.I.A.

3/1E

C. Interior view



4 Door Model

A. 3/4 view of car from front



B. 3/4 view of car from rear



5. Overall width of the car 149.0 cm

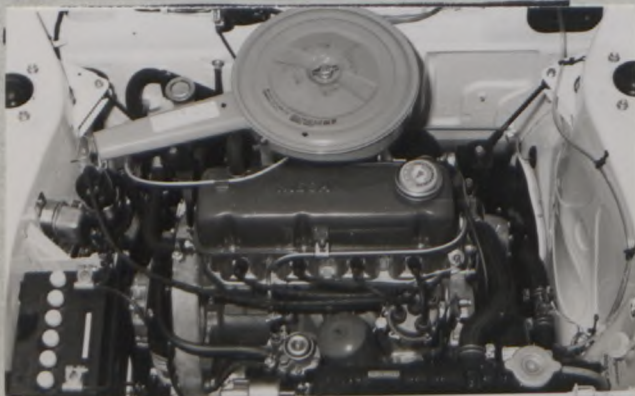
Width of the car measured in the vertical plane passing through the axle of the wheels

Front 149.0 cm

156. Cooling fan dia 190 mm

157. Number of blades of cooling fan 5

O. Engine in car with all accessories, bonnet opened or removed.





JAPAN AUTOMOBILE FEDERATION

日本自動車連盟

J.A.F 公認番号 T-164 E-5
発効年月日 1973年12月31日
F.I.A. Homol. No 5473

h/2E

FEDERATION INTERNATIONALE DE L'AUTOMOBILE

Form of recognition accordance with Appendix J to the International Sporting Code.

国際スポーツ法典付則J項及びJAF国内競技車両規則に従った公認書式。

Make NISSAN MOTOR CO., LTD. 製造会社名	Model E10 型式及び通称名	NISSAN CHERRY
Modification's application starts with serial	No. chassis 適用シャーシ型式番号 engine 適用エンジン型式番号	E10-000001 A10-000001
Application of this amendment started the 適用年月日	SEP. 1973	
Commercial denomination after application of modifications		
The modifications are to be considered as: 変形 / normal evolution of the type 改造 / 正常進化		
Date amendment is valid from	1.4.73	List

Description of amendment 内容

The following items have been added for group 1

2DOOR SEDAN MODEL

Photograph

A, 3/4 view of car from front



B, 3/4 view of car from rear



Stamp and signature of the JAF

JAF公認印及び署名

難波靖彦
Yasuharu Nanba



Stamp and signature of the F.I.A.

[Signature]

Make NISSAN

Model E10
型式

J.A.F.公認番号 T-164E-5

F.I.A. Rec. No. 5473

h/2E

4DOOR SEDAN MODEL

Photograph

A, 3/4 view of car from front



B, 3/4 view of car from rear



2DOOR COUPE MODEL

Photograph

A, 3/4 view of car from front



B, 3/4 view of car from rear



INSTRUMENT

Photograph

C, Interior view



C, Interior view





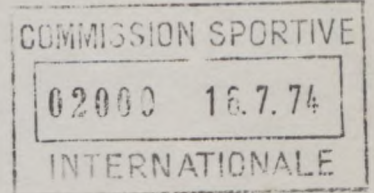
JAPAN AUTOMOBILE FEDERATION

社団法人 日本自動車連盟

J.A.F公認番号 T-164E-6
発効年月日 1974年4月30日

F. I. A. Homol. No 5473 5/3E

FEDERATION INTERNATIONALE DE L'AUTOMOBILE



Form of recognition accordance with Appendix J to the International Sporting Code.

国際スポーツ法典付則J項及びJAF国内競技車両規則に従った公認書式。

Make NISSAN MOTOR CO. LTD. 製造会社名	Model E10 型式及び通称名	NISSAN CHERRY
Modification's application starts with serial	No. chassis engine	適用シャーシー型式番号 E10-000001 適用エンジン型式 A10
Application of this amendment started the 適用年月日	DEC. 1973	
Commercial denomination after application of modifications	KE10	
The modifications are to be considered as: variant / variant normal evolution of the type 正常進化		
Date amendment is valid from 1.8.74	List	

Description of amendment 内容

The following items have been added for group 1.

WHEELS

- | | |
|-------------------------------------|-------------------|
| 50. Type | Pressed steel |
| 51. Weight(per wheel, without tyre) | 6.9 kg |
| 52. Method of attachment | 4 Nuts |
| 53. Rim diameter | 330 mm 13 inches |
| 54. Rim width | 114 mm 4.5 inches |

SUSPENSION

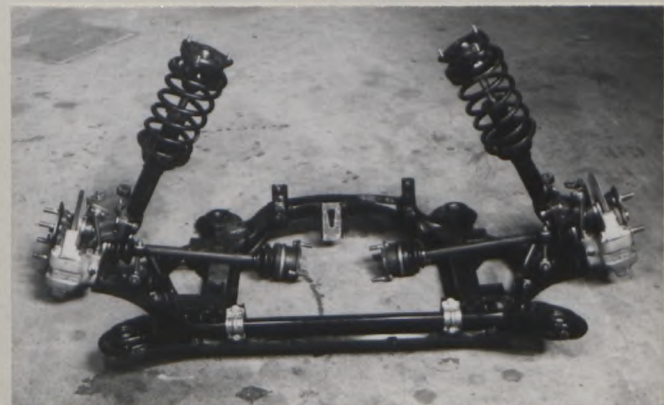
- | | |
|----------------|-------------|
| 72. Stabilizer | Torsion bar |
|----------------|-------------|

Photograph

Road wheel.



D. Front axle complete.



Stamp and signature of the JAF

JAF公認印及び署名

難波靖治

Yasuharu Nanba



Stamp and signature of the F.I.A.





JAPAN AUTOMOBILE FEDERATION

社団法人 日本自動車連盟

J.A.F公認番号

T-164E-7

発効年月日

1975年6月30日

F. I. A. Homol. No

5473

6/4E

FEDERATION INTERNATIONALE DE L'AUTOMOBILE

Form of recognition accordance with Appendix J to the International Sporting Code.

国際スポーツ法典付則J項及びJAF国内競技車両規則に従った公認書式。

Make	NISSAN MOTOR CO., LTD.	Model	E10		NISSAN CHERRY
製造会社名		型式及び通称名			
Modification's application starts with serial		No. chassis engine	適用シャーシー型式番号 適用エンジン型式番号		E10-063001 A10
Application of this amendment started the		NOV, 1971			
適用年月日					
Commercial denomination after application of modifications		E10, KE10.			
The modifications are to be considered as:	normal evolution	normal evolution of the type			
		正常進化			
Date amendment is valid from	1 10 75			List	

Description of amendment 内容

CORRECTION

F.I.A. Homol. No. 5473/3/1E Page 2

157. Number of blades of cooling fan

5 → 6

Stamp and signature of the JAF

JAF公認印及び署名

難波靖治

Yasuharu Nanba



Stamp and signature of the F.I.A.





JAPAN AUTOMOBILE FEDERATION

社団法人 日本自動車連盟

J.A.F. 公認番号 T-164V-8
発効年月日 1975年6月30日
F.I.A. Homol. No 5473

7/3V

FEDERATION INTERNATIONALE DE L'AUTOMOBILE

Form of recognition accordance with
Appendix J to the International Sporting Code.

国際スポーツ法典付則J項及びJAF国内競技車両規則に従った公認書式。

Make	NISSAN MOTOR CO., LTD.	Model	E10	NISSAN CHERRY
製造会社名		型式及び通称名		
Modification's application starts with serial		No. chassis	適用シャーシー型式番号	E10-063001
		engine	適用エンジン型式番号	A10
Application of this amendment started the			FEB, 1975.	
適用年月日				
Commercial denomination after application of modifications			E10, KE10.	
The modifications are to be considered as:	Variant / modification	"valable en Groupe 2 uniquement"		
	変型 / REVOLUTION OF THE TYPE	"valid for Group 2 only"		
Date amendment is valid from	1.10.75	List		

Description of amendment 内容

OPTIONAL EQUIPMENT

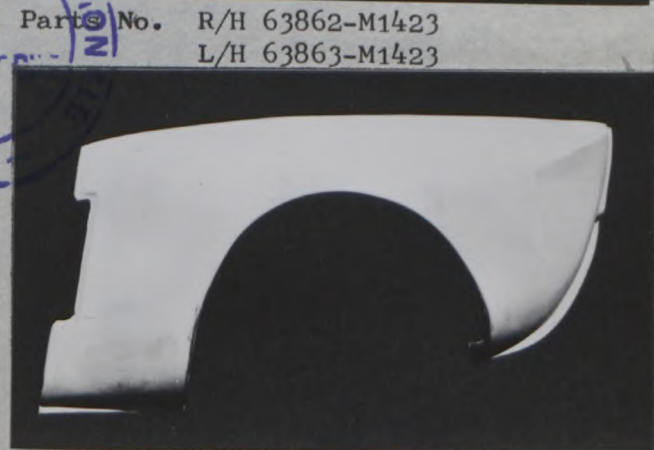
VALID FOR GROUP 2 ONLY

Parts No. R/H 63860-M1423
L/H 63861-M1423

FRONT OVER FENDER



REAR OVER FENDER



Stamp and signature of the JAF

JAF 公認印及び署名

難波靖治

Yasuharu Nanba



Stamp and signature of the F.I.A.





JAPAN AUTOMOBILE FEDERATION

社団法人 日本自動車連盟

J.A.F公認番号 T-164V-9
発効年月日 1979年4月30日
F.I.A. Homol. No 5473/

08/04V

FEDERATION INTERNATIONALE DE L'AUTOMOBILE

Form of recognition accordance with
Appendix J to the International Sporting Code.

国際スポーツ法典付則J項及びJAF国内競技車両規則に従った公認書式。

Make NISSAN MOTOR CO., LTD. Model E10 NISSAN CHERRY
 製造会社名 型式及び通称名
 Modification's application starts with serial No. chassis 通用シャーシー型式番号 E10
 engine 通用エンジン型式 A10
 Application of this amendment started the May, 1978
 適用年月日
 Commercial denomination after application of modifications E10, KE10.
 The modifications are to be considered as: Variant / ~~normal version~~ of the type
 変型 / ~~通常型~~
 Date amendment is valid from -1. JUL. 1979 List

Description of amendment 内容

OPTIONAL EQUIPMENT

VALID FOR GROUP 2 ONLY

The following items have been added for group 2.

NOTE: The item number in the brackets is according to the old recognition form.

FINAL DRIVE

- 103. (293) Number of teeth 63/13, 71/14, 64/12.
- 104. (293) Ratio 4.84 5.07 5.33

GEAR-BOX

- 92. (270) Manual type, make NISSAN "valable en Groupe 2 uniquement"
- 93. (271) Number of gear-box ratios forward 4 "valid for Group 2 only"
- 96. (277)

	Alternative manual	
	Ratio	No. teeth
1	2.55	$\frac{30}{22} \times \frac{30}{16}$
2	1.67	$\frac{30}{22} \times \frac{27}{22}$
3	1.26	$\frac{30}{22} \times \frac{25}{22}$
4	1.00	
Rev	2.98	$\frac{30}{22} \times \frac{14}{16} \times \frac{35}{14}$



Stamp and signature of the JAF

JAF公認印及び署名

難波靖治

Yasuharu Nanba



Stamp and signature of the F.I.A.

[Signature]