

F.I.A. Recognition No. 5407  
Group 1 - Series Production.



## ROYAL AUTOMOBILE CLUB

31, Belgrave Square, London, S.W.1

Form of recognition in accordance with appendix J to the International Sporting Code of the  
FEDERATION INTERNATIONALE DE L'AUTOMOBILE

Cylinder-capacity 1498 cm.<sup>3</sup> 91.41 in.<sup>3</sup>  
Manufacturer Chrysler United Kingdom Ltd., Model Hillman Avenger 1500.  
Serial No. of chassis/body 211.000001 Manufacturer Chrysler United Kingdom Ltd.,  
Serial No. of engine 211.000001 Manufacturer Chrysler United Kingdom Ltd.,  
Recognition is valid from 1/4/71 List 71/4  
The manufacturing of the model described in this recognition form started on 1st December 1969  
and the minimum production of 5000 identical cars, in accordance with the specifications of  
this form was reached on 28th February 1970

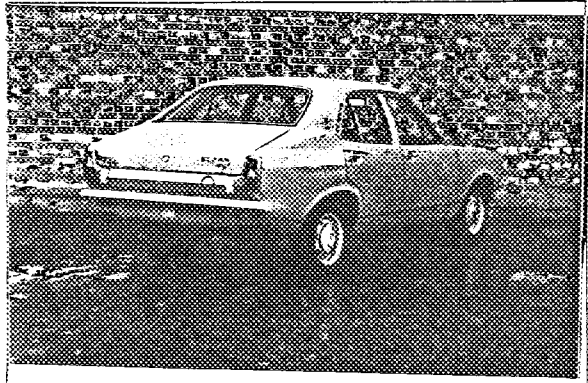
Photograph A.  $\frac{3}{4}$  view of car from front



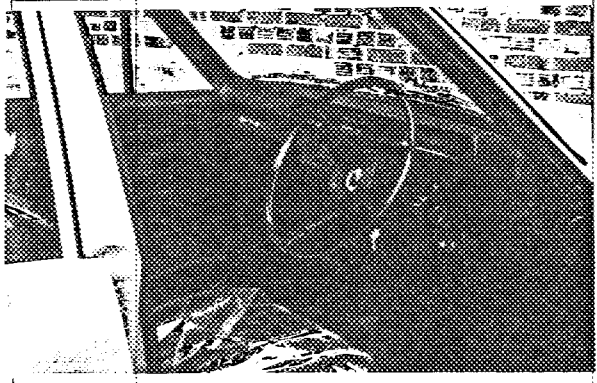
F.I.A. Stamp

R.A.C. Stamp

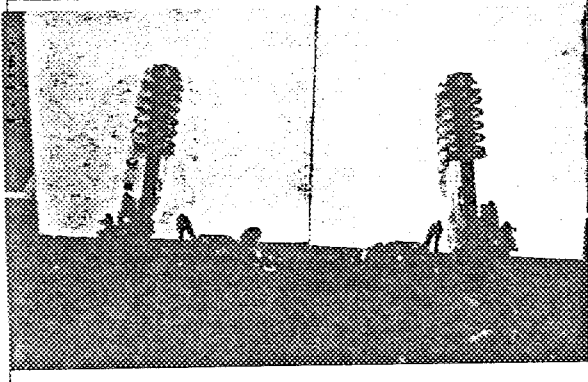
5407



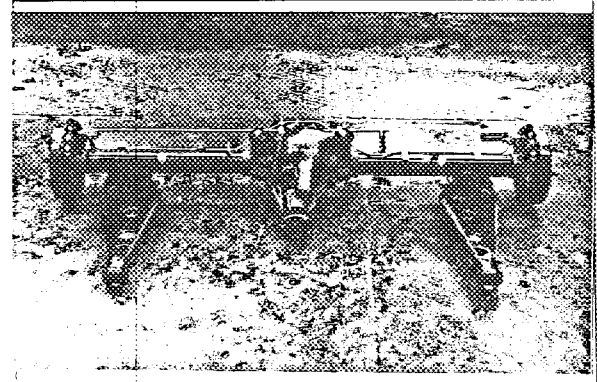
B



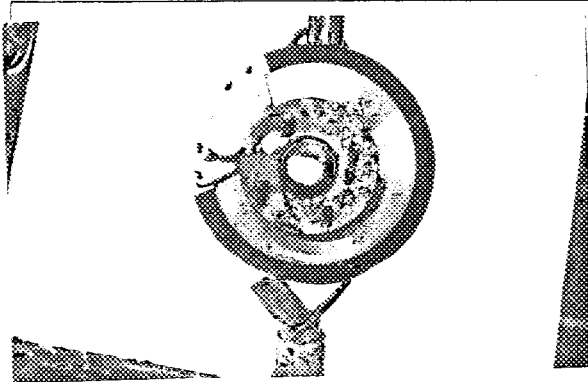
C



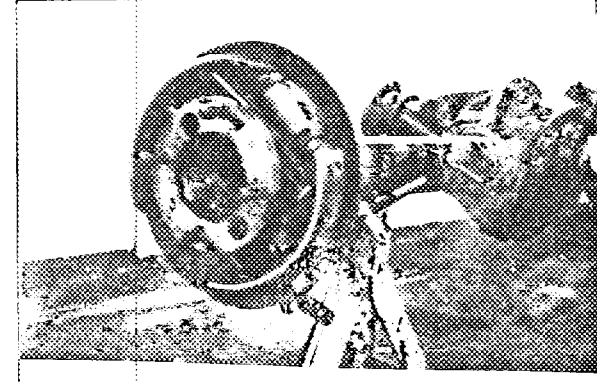
D



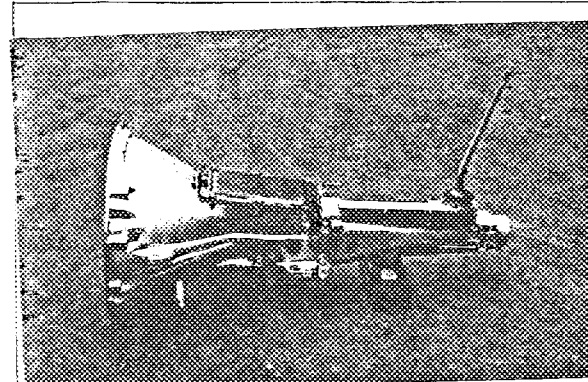
E



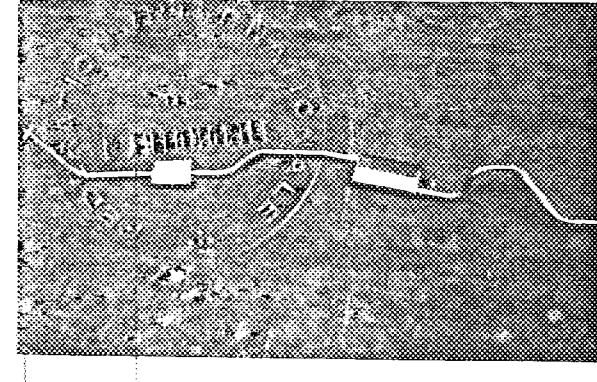
F



G

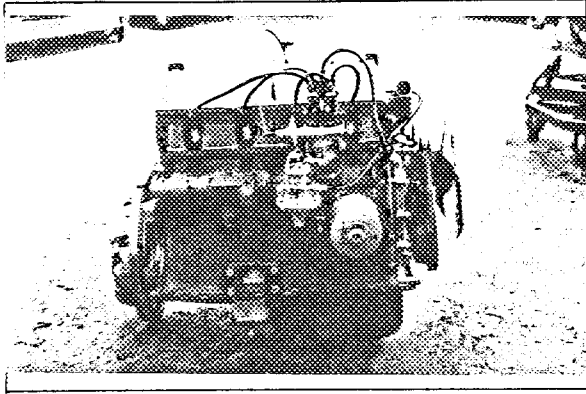


H

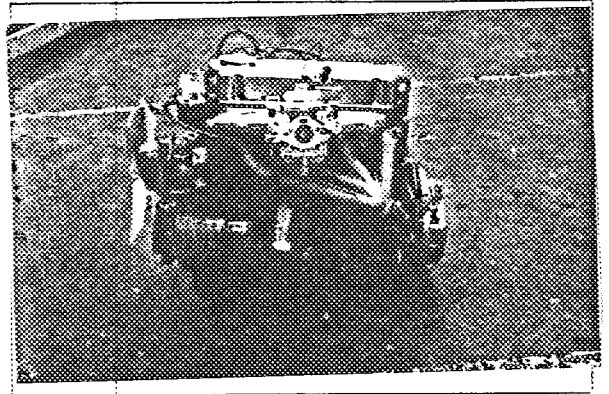


I

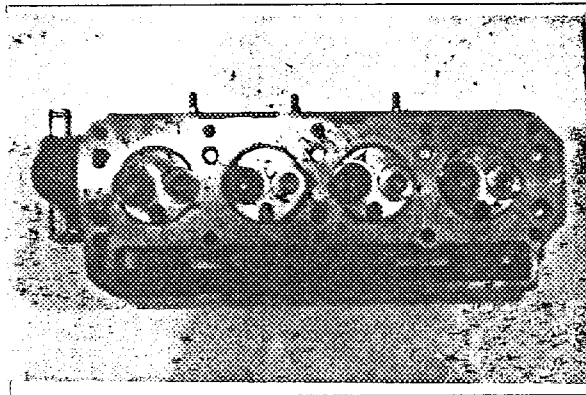
5407



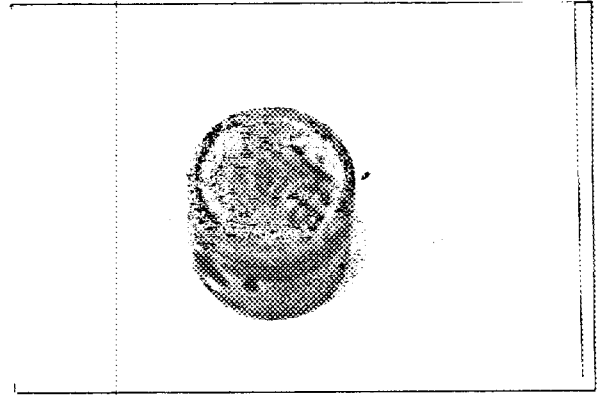
J



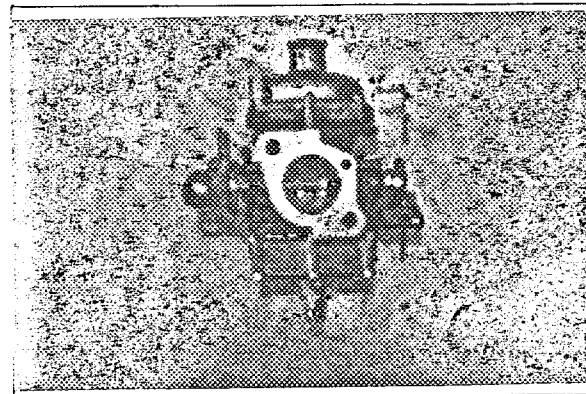
K



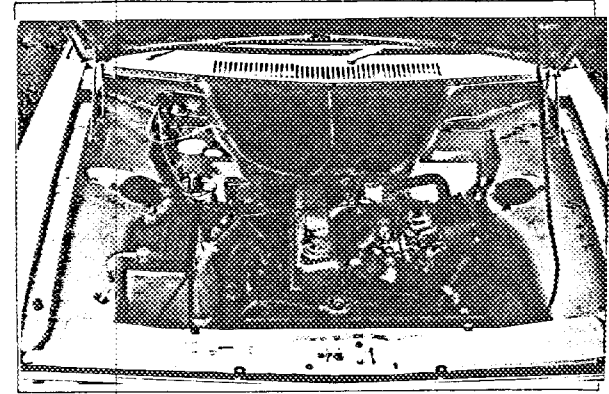
L



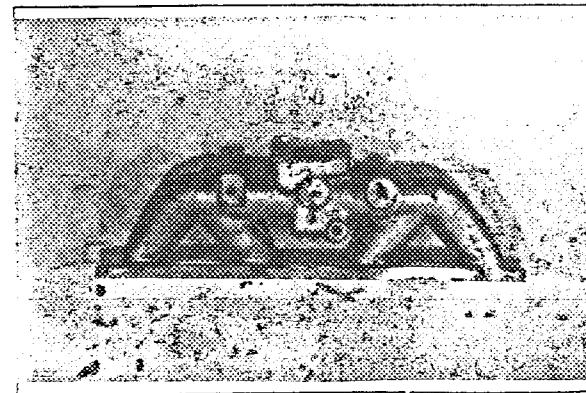
M



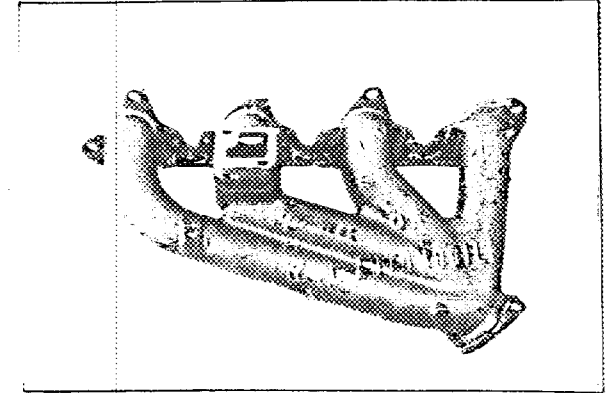
N



O



P



Q

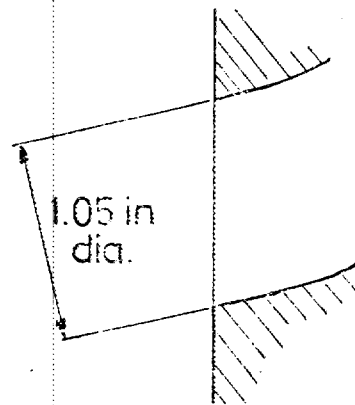
Make Hillman

Model Avenger 1500

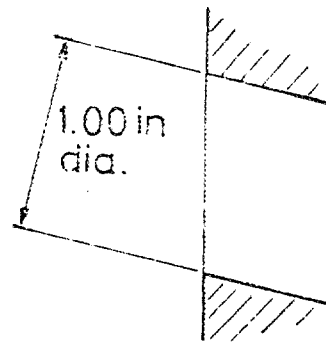
F.I.A. Rec. No.

5407

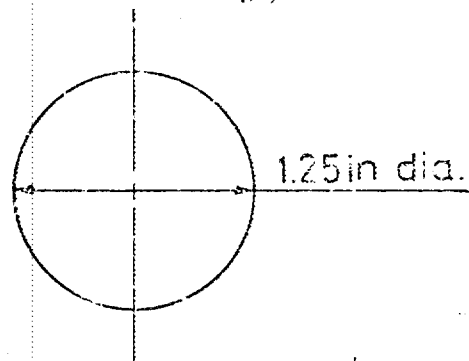
Drawing inlet manifold ports, side of cylinderhead. Indicate scale or dimensions and manufacturing tolerance.



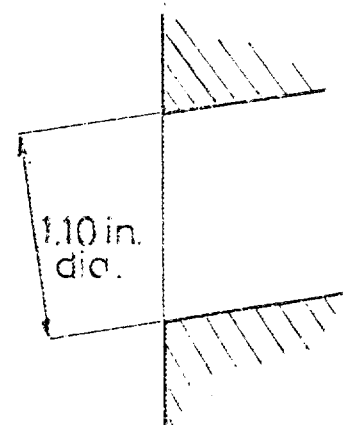
Drawing of entrance to inlet port of cylinderhead. Indicate scale or dimensions and manufacturing tolerance.



Drawing of exhaust manifold ports, side of cylinderhead. Indicate scale or dimensions and manufacturing tolerance.



Drawing of exit to exhaust port of cylinderhead. Indicate scale or dimensions and manufacturing tolerance.



Make Hillman

Model Avenger 1500

F.I.A. Rec. No. 5407

NOTE 1.

All dimensions must be given in two measuring systems, see Note 3.

CAPACITIES AND DIMENSIONS

1. Wheelbase		2490 mm.	98.0 inches
2. Front track	1295.4 mm.	51.0 inches	
3. Rear track		1301.0 mm.	51.3 inches

Height of bottom of sill panel to the road :-

Front :- 7.25 in. 184 mm.

Rear :- 8.10 in. 206 mm.

4. Overall length of the car		409 cm.	161.3 inches
5. Overall width of the car		159 cm.	62.5 inches
5a - Front Width : 64 in			
6. Overall height of the car		135 cm.	53.1 inches
6b - Rear Width =			
7. Capacity of fuel tank (reserve included)	40.9 ltrs.	10.8 gall. U.S.	9 gall. Imp.
8. Seating Capacity.	4		
9. Weight. Total weight of the car with normal equipment, water, oil, and spare wheel but without fuel or repair tools :	820 kg.	1810 lbs.	16.2 cwt.

NOTE 2.

Differences in track caused by the use of other wheels with different rim widths must be stated when recognition is requested for the wheels concerned. Specify ground clearance in relation to the track and give drawing of two easily recognisable points at front and rear at which measurements are taken. These ground clearance dimensions are only for information when checking the track and can in no way affect the eligibility of the car.

NOTE 3.

CONVERSION TABLE

1 inch/pouce	— 2.54	cm.	1 quart US	— 0.9464	ltrs.
1 foot/pied	— 30.4794	cm.	1 pint (pt)	— 0.568	ltrs.
1 sq. inch/pouce carre	— 6.452	cm. <sup>2</sup>	1 gallon Imp.	— 4.546	ltrs.
1 cubic inch/pouce cube	— 16.387	cm. <sup>3</sup>	1 gallon US	— 3.785	ltrs.
1 pound/livre (lb)	— 453.593	gr.	1 hundred weight (cwt.)	— 50.802	kg.

Make Hillman

Model Avenger 1500

F.I.A. Rec. No.

5407

CHASSIS AND COACHWORK (Photographs A, B and C)

20. Chassis/body construction: ~~separate~~/unitary construction
21. Unitary construction, material(s) Steel
22. Separate construction, Material(s) of chassis -
23. Material(s) of coachwork Steel
24. Number of doors 4 Material(s) Steel
25. Material(s) of bonnet Steel
26. Material(s) of boot lid Steel
27. Material(s) of rear-window Safety Glass
28. Material(s) of windscreen Laminated or Safety Glass
29. Material(s) of front-door windows Safety Glass
30. Material(s) of rear-door windows Safety Glass
31. Sliding system of door windows Vertical Winding
32. Material(s) of rear-quarter light Safety Glass

ACCESSORIES AND UPHOLSTERY

38. Interior heating : yes — ~~no~~
39. Air conditioning : ~~yes~~ Optional.
40. Ventilation : yes — ~~no~~
41. Front seats, type of seat and upholstery Ambia on cushion frame.
42. Weight of front seat(s), complete with supports and rails, out of the car :  
8.15 kg. 18 lbs.
43. Rear seats, type of seat and upholstery Ambia on cushion frame.
44. Front bumper, material(s) Steel Weight 3.43 kg. 7.55 lbs.
45. Rear bumper, material(s) Steel Weight 4.15 kg. 9.15 lbs.

WHEELS

50. Type Pressed steel ventilated disc.
51. Weight (per wheel, without tyre) 5.9 kg. 13.0 lbs.
52. Method of attachment 4 stud.
53. Rim diameter 330 mm. 13 ins. 54. Rim width 114 mm. 4.5 ins.

STEERING

60. Type Rack and Pinion.
61. Servo-assistance : ~~yes~~ no
62. Number of turns of steering wheel from lock to lock 3.66
63. In case of servo-assistance -

Make Hillman

Model Avenger 1500

F.I.A. Rec. No. 5407

SUSPENSION

- 70. Front suspension (photograph D), type Independent hydraulic strut assemblies.
- 71. Type of spring Coil.
- 72. Stabiliser (if fitted) Transverse anti-roll bar.
- 73. Number of shock absorbers 2. 74. Type Telescopic.
- 78. Rear suspension (photograph E), type Live axle with 4 link location.
- 79. Type of spring Coil.
- 80. Stabiliser (if fitted) NIL.
- 81. Number of shock absorbers 2. 82. Type Telescopic.

BRAKES (photographs F and G)

- 90. Method of operation Hydraulic.
- 91. Servo-assistance (if fitted), type Girling direct acting vacuum (optional).
- 92. Number of hydraulic master cylinders 1, Tandem master cylinder optional.

	2 FRONT	1 REAR
93. Number of cylinders per wheel		
94. Bore of wheel cylinder(s)	48.1 mm. 1.893 inches	1.777 mm. 0.7 inches

Drum Brakes

95. Inside diameter	mm. inches	2030 mm. 8.0 inches
96. Length of brake linings	mm. inches	197 mm. 7.75 inches
97. Width of brake linings	mm. inches	381 mm. 1.5 inches
98. Number of shoes per brake		2.
99. Total area per brake	mm. <sup>2</sup> sq. in.	15000 mm. <sup>2</sup> 23.0 sq. in.

Disc Brakes

100. Outside diameter	240 mm. 9.44 inches	mm. inches
101. Thickness of disc	9.5 mm. 0.375 inches	mm. inches
102. Length of brake linings	61.8 mm. 2.436 inches	mm. inches
103. Width of brake linings	43.2 mm. 1.70 inches	mm. inches
104. Number of pads per brake	2.	
105. Total area per brake	5060 mm. <sup>2</sup> 7.82 sq. in.	mm. <sup>2</sup> sq. in.

Make Hillman Model Avenger 1500 F.I.A. Rec. No. 5407

**ENGINE** (photographs J and K)

130. Cycle 4. 131. Number of cylinders 4.  
 132. Cylinder Arrangement In line.  
 133. Bore 86.1 mm. 3.39 in. 134. Stroke 64.3 mm. 2.53 in.  
 135. Capacity per cylinder 374.5 cm.<sup>3</sup> 22.9 cu. in.  
 136. Total cylinder capacity 1498 cm.<sup>3</sup> 91.41 cu. in.  
 137. Material(s) of cylinder block Cast Iron. 138. Material(s) of sleeves (if fitted) NIL.  
 139. Cylinder head, material(s) Cast Iron. Number fitted 1.  
 140. Number of inlet ports 4. 141. Number of exhaust ports 4.  
 142. Compression ratio 9.2 : 1.  
 143. Volume of one combustion chamber 13.7) cm.<sup>3</sup> 0.836) cu. in.  
16.2) 0.990)  
 144. Piston, material Aluminium. 145. Number of rings 3.  
 146. Distance from gudgeon pin centre line to highest point of piston crown 44.0 - 44.1 mm. 1.732) in.  
1.735)  
 147. Crankshaft: ~~rodless~~/stamped 148. Type of crankshaft: integral/Yes.  
 149. Number of crankshaft main bearings 5.  
 150. Material of bearing cap Cast Iron.  
 151. System of lubrication: ~~dry sump~~/oil in sump  
 152. Capacity, lubricant 4.0 ltrs. 7.0 pts. 4.2 quarts U.S.  
4.25 7.5 4.5 with cooler.  
 153. Oil cooler: ~~yes~~ Optional. 154. Method of engine cooling Water.  
 155. Capacity of cooling system 7.32 ltrs. 12.9 pts. 7.73 quarts U.S.  
 156. Cooling fan (if fitted) dia. 36.8 cm. 14.5 in.  
 157. Number of blades of cooling fan 4.

**Bearings**

158. Crankshaft main, type Steel shell dia. 54.0 m.m. 2.125 in.  
 159. Connecting rod big end, type Steel shell dia. 50.8 m.m. 2.000 in.

**Weights**

160. Flywheel (clean) 7.65 kg. 16.875 lbs.  
 161. Flywheel with clutch (all turning parts) 12.50 kg. 27.555 lbs.  
 162. Crankshaft 12.25 kg. 27.0 lbs. 163. Connecting rod 0.723 kg. 1.594 lbs. Top  
 164. Piston with rings and pin 0.676 kg. 1.492 lbs. Limit.



Make Hillman

Model Avenger 1500

F.I.A. Rec. No.

5407

**FOUR STROKE ENGINES**

170. Number of camshafts 1. 171. Location Right hand side of the block.  
172. Type of camshaft drive Chain.  
173. Type of valve operation Pushrod and rockers.

**INLET** (see page 4)\*

180. Material(s) of inlet manifold Aluminium.  
181. Diameter of valves 36.06 mm. 1.420 ins.  
182. Max. valve lift 9.31 mm. 0.367 in. 183. Number of valve springs 1.  
184. Type of spring Coil. 185. Number of valves per cylinder 1.  
186. Tappet clearance for checking timing ~~cold~~/warm 0.23 mm. 0.008 ins.  
187. Valves open at (with tolerance for tappet clearance indicated) 35° B.T.D.C.  
188. Valves close at (with tolerance for tappet clearance indicated) 69° A.B.D.C.  
189. Air filter, type Paper element.

**EXHAUST** (see page 4)\*

195. Material(s) of exhaust manifold Cast Iron.  
196. Diameter of valves 30.50 mm. 1.200 ins.  
197. Max. valve lift 9.26 mm. 0.365 in. 198. Number of valve springs 1.  
199. Type of spring Coil. 200. Number of valves per cylinder 1.  
201. Tappet clearance for checking timing ~~cold~~/warm 0.325 mm. 0.012 ins.  
202. Valves open at (with tolerance for tappet clearance indicated) 69° B.B.D.C.  
203. Valves close at (with tolerance for tappet clearance indicated) 23° A.T.D.C.  
204. Diameter outlet orifice exhaust manifold 38.1 mm. 1.50 ins.

**CARBURETION** (photograph N)

210. Number of carburettors fitted 1. 211. Type Horizontal.  
212. Make Zenith. 213. Model 150 CDS.  
214. Number of mixture passages per carburettor 1.  
215. Flange hole diameter of exit port(s) of carburettor 38.1 mm. 1.50 ins.  
216. Minimum diameter of venturi/minimum diam., with piston at maximum height (example : SU) 25.4 mm. 1.00 ins.

**INJECTION** (if fitted) NIL.

220. Make of pump 221. Number of plungers  
222. Model or type of pump 223. Total number of injectors  
224. Location of injectors  
225. Minimum diameter of inlet pipe mm. ins.

\* For additional information concerning two-stroke engines and super-charged engines, see page 13.

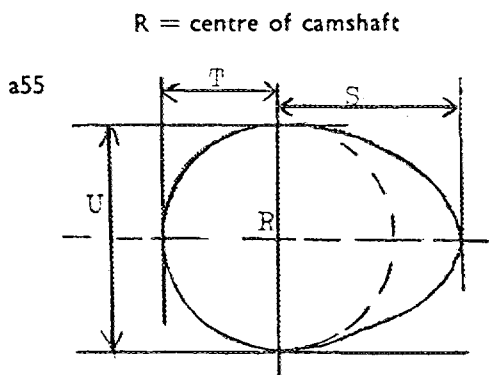
Make Hillman Model Avenger 1500. F.I.A. Rec. No. 5407

**ENGINE ACCESSORIES**

230. Fuel pump : mechanical ~~and/or electric~~
231. No. fitted 1.
232. Type of ignition system Coil. 233. No. of distributors 1.
234. No. of ignition coils 1. 235. No. of spark plugs per cylinder 1.
236. Generator, type : dynamo ~~alternator~~—number fitted 1.
237. Method of drive Belt.
238. Voltage of generator 12 volts
239. Battery, number 1.
240. Location Engine compartment.
241. Voltage of battery 12 volts

**ENGINE AND CAR PERFORMANCES** (as declared by manufacturer in catalogue)

250. Max. engine output 72 (type of horsepower: BHP gross. ) at 5,000 r.p.m.
251. Max. r.p.m. 6,700 output at that figure Not available.
252. Max. torque 80 lbs ft. at 3,000 r.p.m.
253. Max. speed of the car 145 km./hour 90 miles/hour



**Inlet cam**

S = 23.60 - 24.40 mm. 0.930 - 0.960 inches  
 T = 17.15 - 17.90 mm. 0.675 - 0.705 inches  
 U = 34.22 - 35.80 mm. 1.350 - 1.410 inches

**Exhaust cam**

S = 23.60 - 24.40 mm. 0.930 - 0.960 inches  
 T = 17.15 - 17.90 mm. 0.675 - 0.705 inches  
 U = 34.22 - 35.80 mm. 1.350 - 1.410 inches



Make Hillman

Model Avenger 1500

F.I.A. Rec. No.

5407

**IMPORTANT**—The conformity of the car with the following items of the present recognition form is to be disregarded during the scrutineering, when the vehicle has been entered in group 2 (Touring cars) or 3 (Grand Touring cars) : 41, 72, 80, 91, 142, 143, 144, 145, 146, 153, 156, 157, 160, 161, 162, 163, 164, 182, 186, 187, 188, 189, 201, 202, 203, 212, 213, 215, 216 222, 225, 230, 250, 251, 252, 253, 255 photographs I, M and N and page 4.

During the scrutineering of cars entered in group 4 (Sportscars) only the following items of the present recognition form are to be taken into consideration : 1, 2, 3, 9, 20, 21, 22, 23, 24, 25, 26, 70, 71, 78, 79, 90, 130, 131, 132, 133, 134, 135, 136, 137, 138, 139, 140, 141, 147, 148, 149, 150, 158, 159, 170, 171, 172, 173, 185, 200, 270, 271, 274, 275, 290, 291, 292 and photographs A, B, D, E, F, G, H, J, K and O.

The vehicle described in this form has been subject to the following amendments :

on.....19.....	rec. no.....	List.....	on.....19.....	rec. no.....	List.....
on.....19.....	rec. no.....	List.....	on.....19.....	rec. no.....	List.....
on.....19.....	rec. no.....	List.....	on.....19.....	rec. no.....	List.....
on.....19.....	rec. no.....	List.....	on.....19.....	rec. no.....	List.....
on.....19.....	rec. no.....	List.....	on.....19.....	rec. no.....	List.....

Optional equipment affecting preceding information. This to be stated together with reference number.

This vehicle is also known as the SUNBEAM AVENGER in certain countries.

293: Final drive ratio :- 4.375 : 1. 8/35 Teeth.

Radiator :- Hot climate option - part no 71245050.

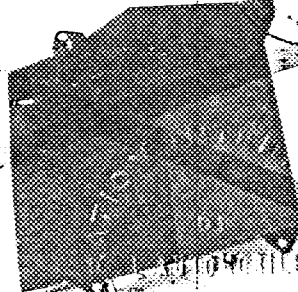
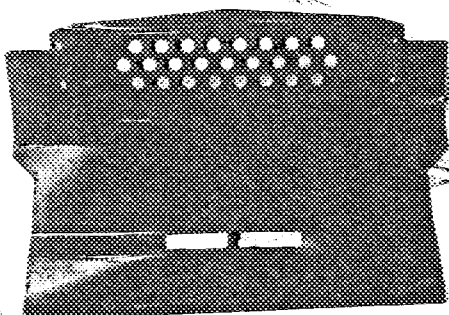
155: Cooling system capacity : 7.4 litres, 13.0 pts, 7.8 U.S.gts.

**Undershields,**

Sump guard - part no 71250072.

Petrol tank guard - part no 71248039.

Gearbox mounting guard - part no 71248024.





MOTOR SPORT DIVISION  
The Royal Automobile Club,  
31 Belgrave Square, London, S.W.1

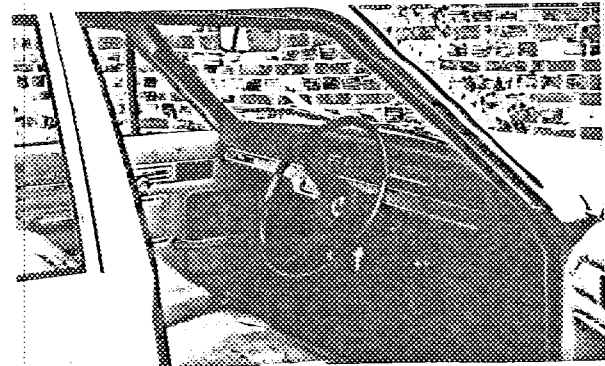
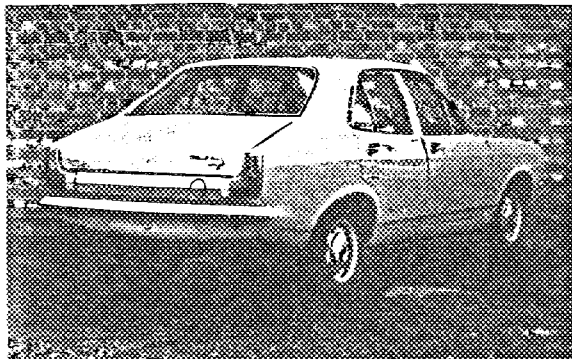
Manufacturer Chrysler U.K.Ltd.  
Model Avenger 1500.  
F.I.A. Recognition No. 5407  
Amendment No. 1.

*Amendment to Form of Recognition*

**FEDERATION INTERNATIONALE DE L'AUTOMOBILE**

No.                      Reference No.                      VARIANT:- Avenger Super.

9.    Weight.                      824 kg.                      1818 lbs.                      16.2 cwts.



Date amendment is valid from 1/4/71

Stamp of F.I.A./R.A.C.



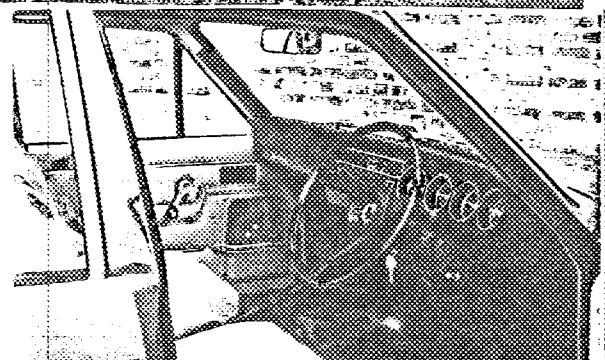
MOTOR SPORT DIVISION  
The Royal Automobile Club,  
31 Belgrave Square, London, S.W.1

Manufacturer Chrysler U.K.Ltd.  
Model Avenger 1500.  
F.I.A. Recognition No. 5407  
Amendment No. 2.

Amendment to Form of Recognition

FEDERATION INTERNATIONALE DE L'AUTOMOBILE

No.	Reference No.	VARIANT:-	Avenger GL.
9.	Weight.	830 kg.	1827 lbs. 16.3 cwt.
41.	Ambla on rubber diaphragm, (reclining).		
42.	22 lbs.	10 kg.	
236	Alternator.		



Date amendment is valid from 1/1/77

Stamp of F.I.A./R.A.C.



**MOTOR SPORT DIVISION**  
The Royal Automobile Club,  
31 Belgrave Square, London, S.W.1

Manufacturer Chrysler U.K.Ltd.  
Model Avenger 1500.  
F.I.A. Recognition No. \_\_\_\_\_  
Amendment No. 3

*Amendment to Form of Recognition*

**FEDERATION INTERNATIONALE DE L'AUTOMOBILE**

No.	Reference No.	VARIANT:-	Avenger GT.
2.	Front track:	50.8 in.	1290 mm.
3.	Rear track:	51.1 in.	1300 mm.
9.	Weight:	844 kg.	1860 lb. 16.6 cwt.
41.	Ambla on rubber diaphragm. ( reclining ).		
42.	Seat weight:	22 lb.	10 kg.
51.	Wheel weight:	6.1 kg.	13.5 lb.
54.	Rim width:	127 mm.	5.0 in.
94.	Rear wheel cylinder bore:		15.9 mm. 0.625 in.
103.	Width of brake pad lining:		47.5 mm. 1.87 in.
105.	Total area per brake:		5620 mm <sup>2</sup> . 8.7 sq in.
156.	Diameter of cooling fan:		33 cm. 13 in.
157.	Number of fan blades:		6.
172.	Double row chain camshaft drive.		
181.	Diameter of inlet valves:		37.4 mm. 1.470 in.
182.	Maximum valve lift:		0.425 in. 10.8 mm.
183.	Number of valve springs:		2.
186.	Tappet clearance:		0.25 mm. 0.010 in.
187.	Inlet valves open at:		44° B.T.D.C.
188.	Inlet valves close at:		78° A.B.D.C.
197.	Maximum valve lift:		0.419 in. 10.6 mm.
198.	Number of valve springs:		2.
201.	Tappet clearance:		0.41 mm. 0.016 in.
204.	Exhaust manifold outlet dia.:		1.25 in. 31.8 mm. (Two outlets).
210.	Number of carburettors :		2.

Date amendment is valid from \_\_\_\_\_

Stamp of F.I.A./R.A.C.



MOTOR SPORT DIVISION  
The Royal Automobile Club,  
31 Belgrave Square, London, S.W.1

Manufacturer Chrysler U.K.Ltd.

Model Avenger 1500.

F.I.A. Recognition No. \_\_\_\_\_

Amendment No. 4

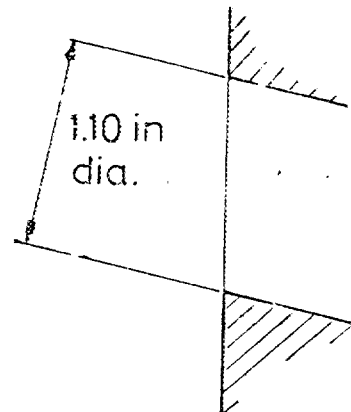
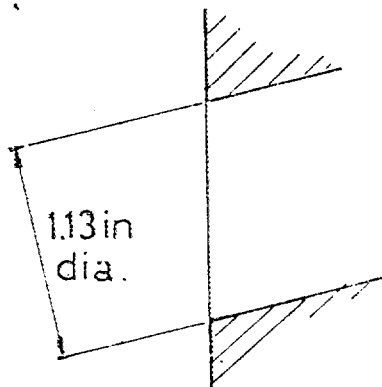
*Amendment to Form of Recognition*

**FEDERATION INTERNATIONALE DE L'AUTOMOBILE**

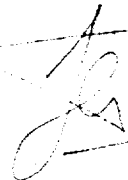
No. Reference No. VARIANT:- Avenger GT. cont.

- 236. Alternator.
- 250. Max engine output: 88 BHP gross at 5500 rpm.
- 252. Max torque: 81 lbs ft. at 3750 rpm.
- 253. Maximum speed of car: 98 mph. 158 kph.
- 255. Camshaft dimensions:  
Inlet and exhaust cams,  
S = 21.9mm. 0.862 in.  
T = 14.5 mm. 0.572 in.  
U = 29.1 mm. 1.145 in.  
Inlet Manifold outlet port.

Cylinder head inlet port.



Date amendment is valid from \_\_\_\_\_

 Stamp of F.I.A./R.A.C.





**MOTOR SPORT DIVISION**  
 The Royal Automobile Club,  
 31 Belgrave Square, London, S.W.1

Manufacturer Chrysler U.K.Ltd.  
 Model Avenger 1500.  
 F.I.A. Recognition No. \_\_\_\_\_  
 Amendment No. 5

*Amendment to Form of Recognition*

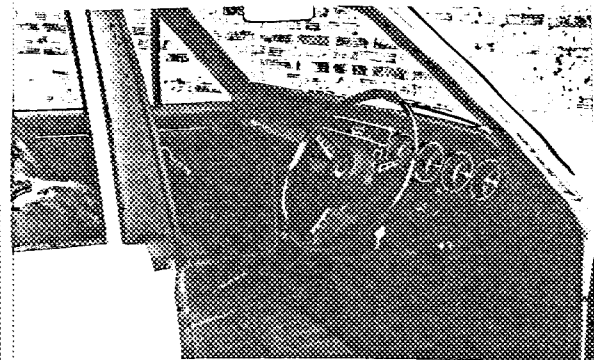
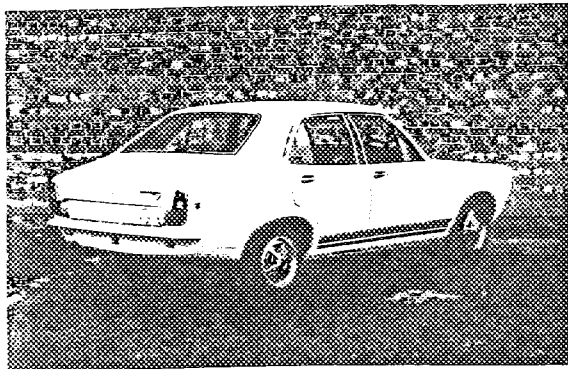
**FEDERATION INTERNATIONALE DE L'AUTOMOBILE**

No. \_\_\_\_\_ Reference No. VARIANT:- Avenger GT.

A.



B & C.



Date amendment is valid from \_\_\_\_\_

*[Handwritten Signature]*

Stamp of F.I.A./R.A.C.



MOTOR SPORT DIVISION  
The Royal Automobile Club,  
31 Belgrave Square, London, S.W.1

Manufacturer Chrysler U.K. Ltd.

Model Avenger 1500.

F.I.A. Recognition No. \_\_\_\_\_

Amendment No. 6

Amendment to Form of Recognition

FEDERATION INTERNATIONALE DE L'AUTOMOBILE

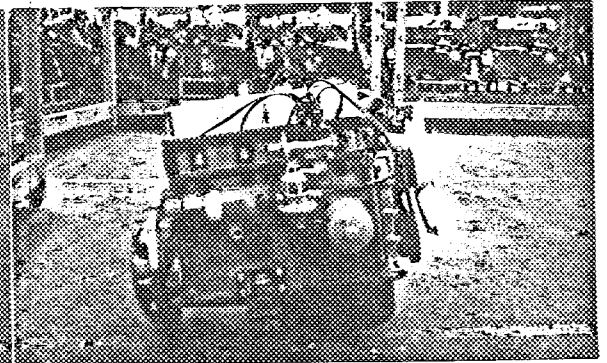
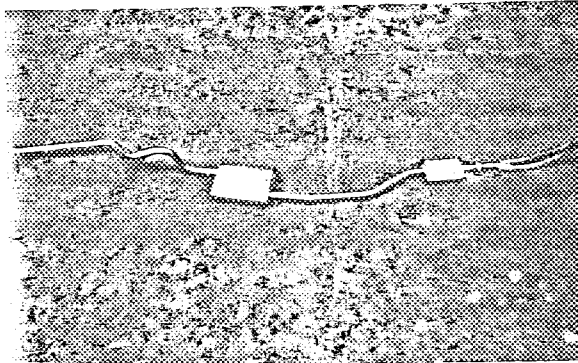
No. \_\_\_\_\_

Reference No. \_\_\_\_\_

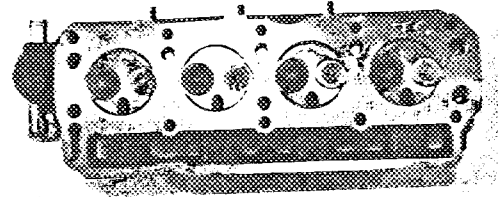
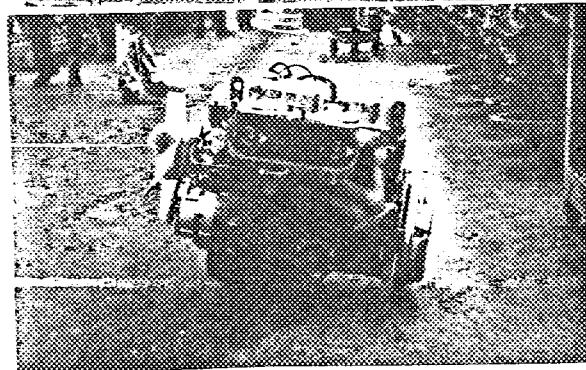
VARIANT:-

Avenger GT.

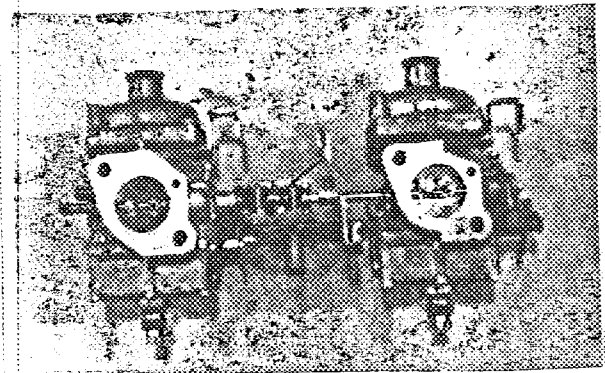
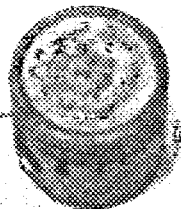
I & J



K & L



M & N



Date amendment is valid from \_\_\_\_\_

Stamp of F.I.A./R.A.C.

*[Handwritten signature]*



MOTOR SPORT DIVISION  
The Royal Automobile Club,  
31 Belgrave Square, London, S.W.1

Manufacturer Chrysler U.K. Ltd.

Model Avenger 1500.

F.I.A. Recognition No. ....

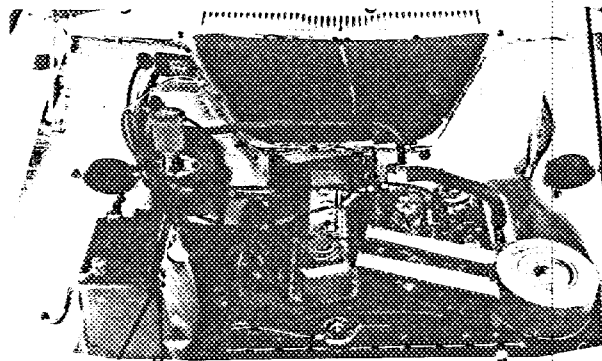
Amendment No. 7

Amendment to Form of Recognition

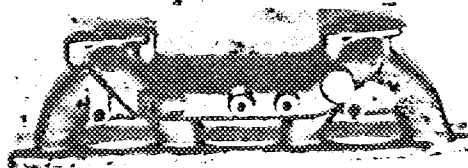
FEDERATION INTERNATIONALE DE L'AUTOMOBILE

No.                      Reference No.                      VARIANT:-                      Avenger GT.

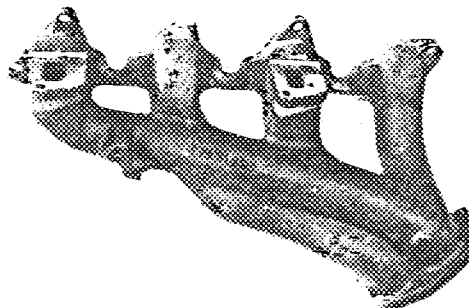
O



P



Q



Date amendment is valid from .....

Stamp of F.I.A./R.A.C.



**MOTOR SPORT DIVISION**  
 The Royal Automobile Club,  
 31 Belgrave Square, London, S.W.1

Manufacturer Chrysler U.K.Ltd.  
 Model Avenger 1500  
 F.I.A. Recognition No. \_\_\_\_\_  
 Amendment No. 8

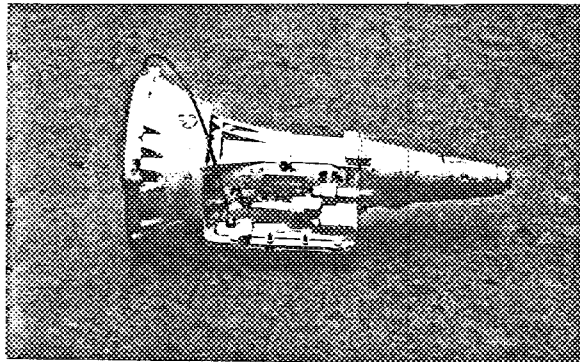
*Amendment to Form of Recognition*

**FEDERATION INTERNATIONALE DE L'AUTOMOBILE**

No.                      Reference No.                      OPTIONAL EQUIPMENT - Group 1.

Automatic transmission.

9. Vehicle weight is increased by    44lbs.                      20 kg.



Date amendment is valid from \_\_\_\_\_

Stamp of F.I.A./R.A.C.



MOTOR SPORT DIVISION  
The Royal Automobile Club,  
31 Belgrave Square, London, S.W.1

Manufacturer Chrysler U.K.Ltd.

Model Avenger 1500.

F.I.A. Recognition No. \_\_\_\_\_

Amendment No. 9

*Amendment to Form of Recognition*

**FEDERATION INTERNATIONALE DE L'AUTOMOBILE**

No. \_\_\_\_\_ Reference No. VARIANT:- Heavy duty suspension.

An option on all models is heavy duty suspension, which consists of stronger springs and harder shock absorbers. For certain territories this specification is standard and it can include the undershielding included on page 12.

Date amendment is valid from \_\_\_\_\_

Stamp of F.I.A./R.A.C.



MOTOR SPORT DIVISION  
The Royal Automobile Club,  
31 Belgrave Square, London, S.W.1

Manufacturer Chrysler U.K. Ltd.

Model Avenger 1500.

F.I.A. Recognition No. 5407.

Amendment No. 2/15

*Amendment to Form of Recognition*

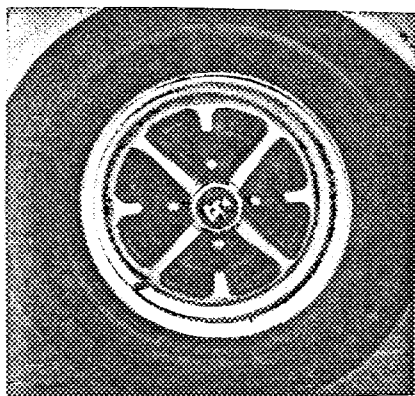
**FEDERATION INTERNATIONALE DE L'AUTOMOBILE**

No.

Reference No.

Evolution - Alternative supplier - Avenger 1500 GT only.

No.	Reference No.		
		Alternative Road-wheel.	Part No: 71264072.
2.		Front track:	1308 mm. 51.5 in.
3.		Rear track:	1315 mm. 51.8 in.
51.		Weight:	7.04 Kg. 15.5 lb.
54.		Rim Width:	127 mm. 5.0 in.



Date amendment is valid from .....

Stamp of F.I.A./R.A.C.



MOTOR SPORT DIVISION  
The Royal Automobile Club,  
31 Belgrave Square, London, S.W.1

Manufacturer Chrysler U.K. Ltd.

Model Avenger 1500

F.I.A. Recognition No. 5407

Amendment No. 3/25

Amendment to Form of Recognition

FEDERATION INTERNATIONALE DE L'AUTOMOBILE

No. Reference No.  
Evolution - All Variants.

277. Alternative Gearbox Ratios.

Gear.	Ratio.	No. teeth.	
1.	3.538	<u>23</u> 15	<u>30</u> 13
2.	2.165	<u>23</u> 15	<u>24</u> 17
3.	1.387	<u>23</u> 15	<u>19</u> 21
4.	1.000	Direct.	
Reverse.	3.680	<u>23</u> 15	<u>36</u> 15

GT Variant only

181 Diameter of inlet valves: 38.05 mm. 1.498 in.

Date amendment is valid from 1/4/72

Stamp of F.I.A./R.A.C.



MOTOR SPORT DIVISION  
The Royal Automobile Club,  
31 Belgrave Square, London, S.W.1

Manufacturer Chrysler U.K.Ltd.  
Model Avenger 1500  
F.I.A. Recognition No. 5407  
Amendment No. 6/3E

*Amendment to Form of Recognition*

**FEDERATION INTERNATIONALE DE L'AUTOMOBILE**

No.	Reference No.	<u>Evolutionary Change - Avenger G.T.</u>
142	Compression ratio:	9.4 : 1
143	Volume of one combustion chamber:	12.3/12.9 cc .751/.787 cu. in.
156	Cooling fan dia:	14.0 in. 355.6 mm viscous coupling drive
157	Number of blades on cooling fan:	5
181	Diameter of inlet valves:	1.550 in. 39.37 mm
196	Diameter of exhaust valves:	1.338 in. 33.9 mm
250	Maximum engine output:	90.5 (type of horsepower: BHP gross) at 5,500 r.p.m.
252	Maximum torque:	85 lb ft. at 3,750 r.p.m.
253	Maximum speed of car:	100 mph 160 kph

Date amendment is valid from 1/10/72

  
Stamp of F.I.A./R.A.C.





MOTOR SPORT DIVISION  
The Royal Automobile Club,  
31 Belgrave Square, London, S.W.1

Manufacturer Chrysler U.K. Ltd.

Model Avenger 1500

F.I.A. Recognition No. 5407

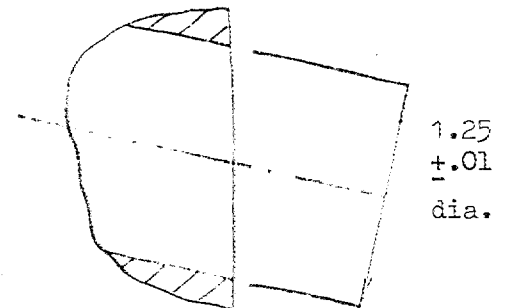
Amendment No. 4/3E

*Amendment to Form of Recognition*

**FEDERATION INTERNATIONALE DE L'AUTOMOBILE**

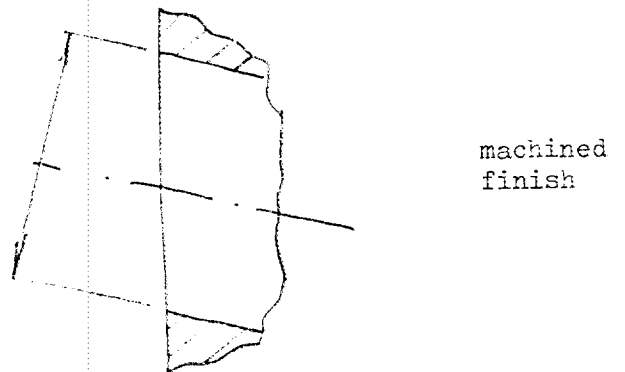
No.                      Reference No.                      Evolutionary Change - Avenger G.T. Only

Drawing, inlet manifold  
ports, side of cylinder  
head.



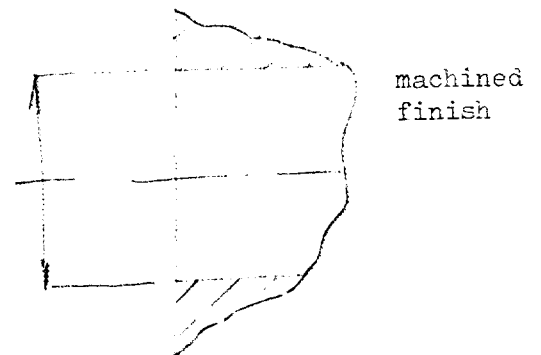
Drawing, entrance to  
inlet port of cylinder  
head.

1.25  
±.01  
dia.



Drawing, exit to exhaust  
port of cylinder head

1.20  
+.01  
- .01  
dia.



Date amendment is valid from.....

Stamp of F.I.A./R.A.C.



MOTOR SPORT DIVISION  
The Royal Automobile Club,  
31 Belgrave Square, London, S.W.1

Manufacturer Chrysler U.K. Ltd

Model Avenger 1500

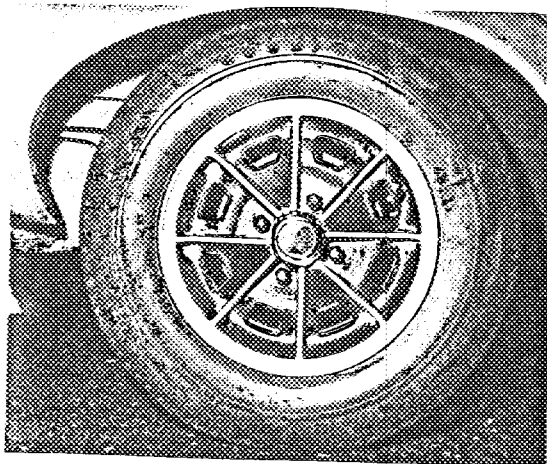
F.I.A. Recognition No. 5407

Amendment No. 5/4E


*Amendment to Form of Recognition*

**FEDERATION INTERNATIONALE DE L'AUTOMOBILE**

No.	Reference No.	<u>Production - Evolution Equipment - Group 1.</u>
2	Front track:	52.5 in. 1333.5 mm.
3	Rear track:	52.8 in. 1341.1 mm.
50	Wheel type:	Aluminium diecast (Kit No. 72.270.036)
51	Weight (per wheel, without tyre):	11.5 lb. 5.2 kgm.
54	Rim Width:	5.5 in. 140 mm.



Date amendment is valid from 1/10/72

  
Stamp of F.I.A./R.A.C.





MOTOR SPORT DIVISION  
The Royal Automobile Club,  
31 Belgrave Square, London, S.W.1

Manufacturer Chrysler U.K. Ltd.

Model Avenger 1500

F.I.A. Recognition No. 5407

Amendment No. 7/3V

*Amendment to Form of Recognition*

FEDERATION INTERNATIONALE DE L'AUTOMOBILE

No.	Reference No.	<u>Production Variant - Avenger G.T. - certain export territories</u>
180	Material of inlet manifold:	steel
195	Material of exhaust manifold:	steel
204	Diameter of outlet orifice, exhaust manifold:	1.90 in. 48.26 mm.
210	Number of carburettors fitted:	2
212	Make:	Weber
213	Model:	40DCOE
214	Number of mixture passages per carburettor:	2
215	Flange hole diameter at exit to carburettor:	1.575 in. 40 mm.
216	Minimum diameter of venturi:	1.181 in. 30 mm.
250	Maximum engine output:	107 (type of horsepower: BHP gross) at 6,100 rpm
252	Maximum torque:	89.6 lb ft. at 4,500 rpm
253	Maximum speed of car:	105 mph 167 kph

Date amendment is valid from.....

  
Stamp of F.I.A./R.A.C.



MOTOR SPORT DIVISION  
The Royal Automobile Club,  
31 Belgrave Square, London, S.W.1

Manufacturer Chrysler U.K.Ltd.

Model Avenger 1500

F.I.A. Recognition No. 5407

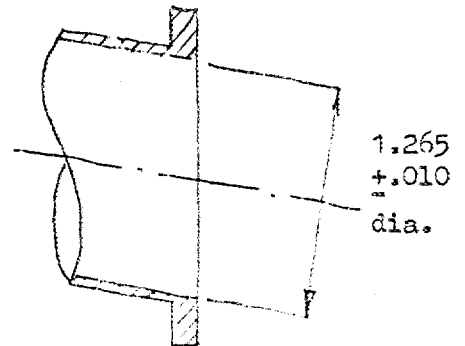
Amendment No. 7/3V

*Amendment to Form of Recognition*

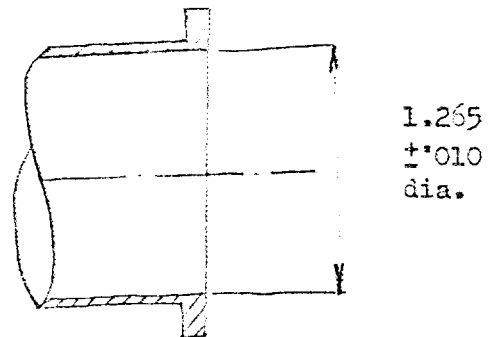
FEDERATION INTERNATIONALE DE L'AUTOMOBILE

No.                      Reference No. Production Variant - Avenger G.T. - certain export territories

Drawing, inlet manifold ports, side of cylinder head.



Exhaust manifold ports, side of cylinder head.



Date amendment is valid from.....

Stamp of F.I.A./R.A.C.



MOTOR SPORT DIVISION  
The Royal Automobile Club,  
31 Belgrave Square, London, S.W.1

Manufacturer Chrysler U.K. Ltd

Model Avenger 1500

F.I.A. Recognition No. 5407

Amendment No. 7/3V

*Amendment to Form of Recognition*

FEDERATION INTERNATIONALE DE L'AUTOMOBILE

No.

Reference No.

Photo. I.

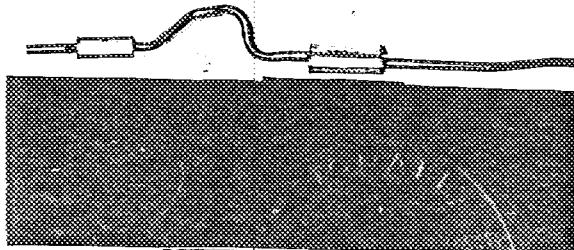


Photo. K.

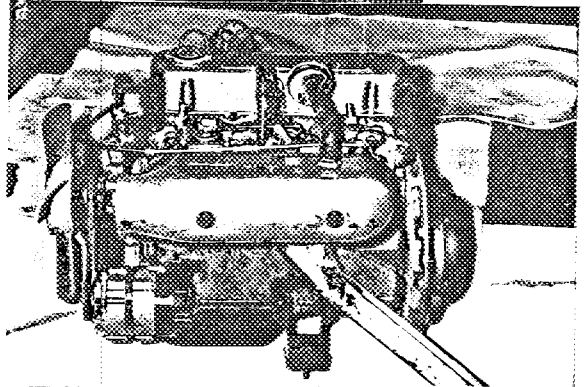
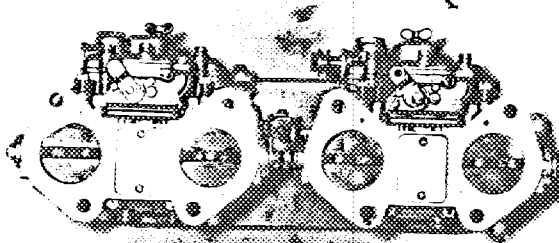


Photo. N.



Date amendment is valid from.....

Stamp of F.I.A./R.A.C.



MOTOR SPORT DIVISION  
The Royal Automobile Club,  
31 Belgrave Square, London, S.W.1

Manufacturer Chrysler U.K. Ltd

Model Avenger 1500

F.I.A. Recognition No. 5407

Amendment No. 7/3V

*Amendment to Form of Recognition*

**FEDERATION INTERNATIONALE DE L'AUTOMOBILE**

No.

Reference No.

Photo. 0

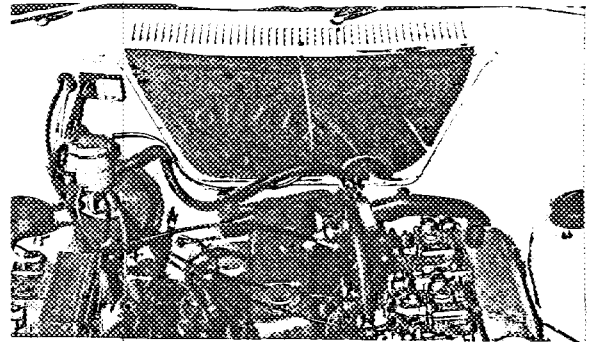
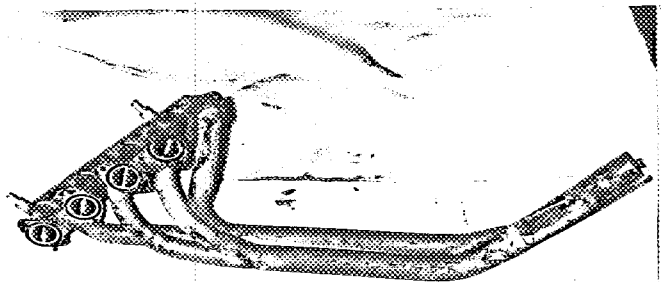


Photo. Pand Q



Date amendment is valid from.....

Stamp of F.I.A./R.A.C.



MOTOR SPORT DIVISION  
The Royal Automobile Club,  
31 Belgrave Square, London, S.W.1

Manufacturer Chrysler U.K. Ltd  
Model Hillman Avenger 1500  
F.I.A. Recognition No. 5407  
Amendment No. 8/W

*Amendment to Form of Recognition*

FEDERATION INTERNATIONALE DE L'AUTOMOBILE

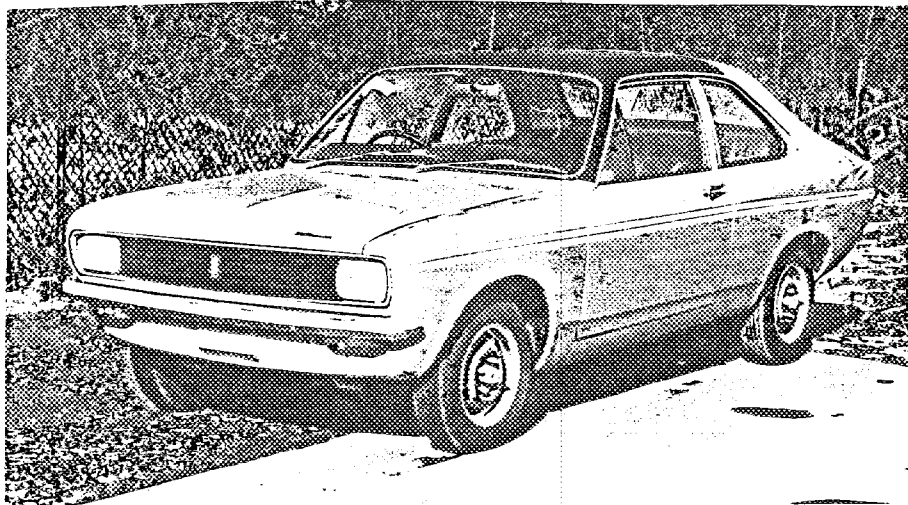
No.

Reference No. Production Variant - Avenger GT

*Evolutionary change - alternative body shape.*

*The 4 Door Avenger GT was superseded by a 2 Door version in January 1973. The specification of the 2 Door GT, including all the options, evolutionary changes, production variants etc., is identical to the superseded 4 Door GT except for the following items:-*

- 9. *Weight :- 830 Kg      1830 Lb.      16.35 cwt.*
- 24. *Number of doors      2*
- 42. *Weight of front seat:- 12.3 Kg      27 Lb.*



Date amendment is valid from 1.7.73

Stamp of F.I.A./R.A.C.





MOTOR SPORT DIVISION  
The Royal Automobile Club,  
31 Belgrave Square, London, S.W.1

Manufacturer *Chrysler UK Ltd*  
Model *Hillman Avenger 15*  
F.I.A. Recognition No. *5407*  
Amendment No. *8/hv*

*Amendment to Form of Recognition*

FEDERATION INTERNATIONALE DE L'AUTOMOBILE

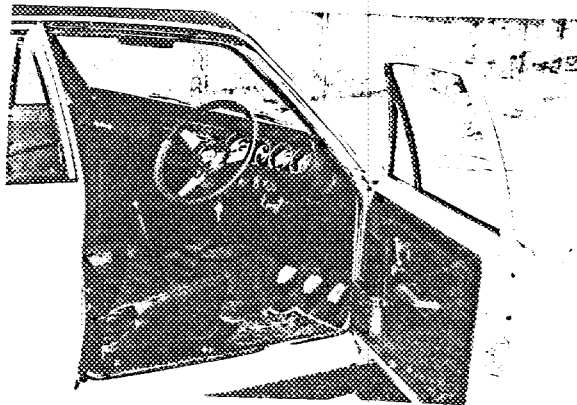
No.

Reference No. *Production Variant - GT 2 Door*

*B.*



*C.*



Date amendment is valid from.....

Stamp of F.I.A./R.A.C.



MOTOR SPORT DIVISION  
The Royal Automobile Club,  
31 Belgrave Square, London, S.W.1

Manufacturer Chrysler UK Ltd  
Model Hillman Avenger 1500  
F.I.A. Recognition No. 5407  
Amendment No. 9/5V

*Amendment to Form of Recognition*

FEDERATION INTERNATIONALE DE L'AUTOMOBILE

No.

Reference No. Evolutionary Change - Avenger GT - with 2 Door

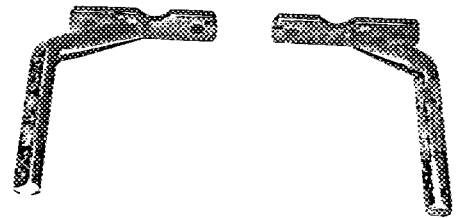
The specification of all Series Production models now includes the following items (termed "Refinement Package"):-

1. Boom brackets (attached to engine sump and gearbox casing)

Part No:- 71.266.302/3

Weight:- .39 Kg .88 Lb.  
(each)

Dimensions:- 17.8 x 10.9cm  
7.0 x 4.3 in

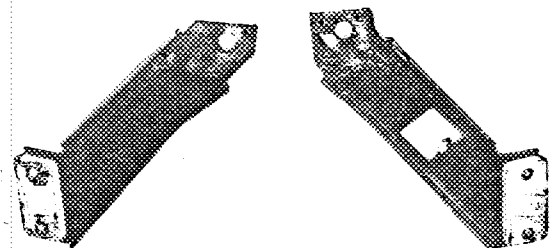


2. Crossmember stays (attached to front suspension crossmember, anti-roll bar mounting and sidemembers.)

Part No:- 71.266.494/5

Weight:- .59 Kg 1.31 Lb.  
(each)

Dimensions:- 30 x 9 cm.  
12 x 3.5 in.



Date amendment is valid from 17/73

Stamp of F.I.A./R.A.C.



MOTOR SPORT DIVISION  
The Royal Automobile Club,  
31 Belgrave Square, London, S.W.1

Manufacturer Chrysler UK Ltd  
Model Hillman Avenger 1500  
F.I.A. Recognition No. 5407  
Amendment No. 10/6V

*Amendment to Form of Recognition*

FEDERATION INTERNATIONALE DE L'AUTOMOBILE

No.

Reference No. Optional equipment - Heavy Duty Specification -  
all models

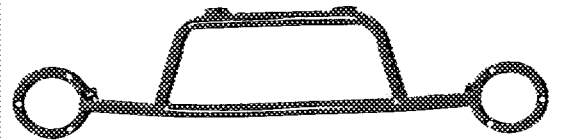
*In addition to the stiffer suspension and undershields the Heavy Duty Specification now includes the following items:-*

1. Turret brace (joining front suspension top mountings to bulkhead)

Part No:- 71.203.122

Weight:- 2.04 Kg 4.5 lb.

Dimensions:- 109 x 30.5 cm.  
43 x 12 in.

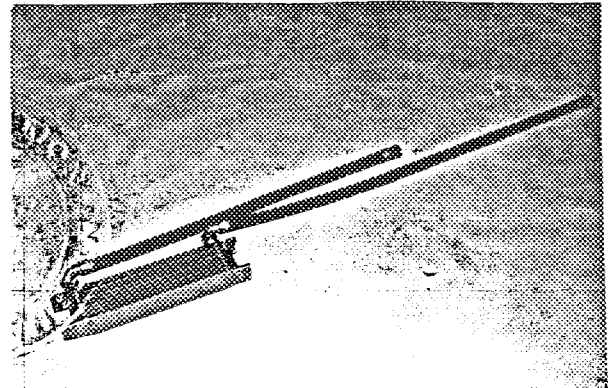


2. Engine oil cooler (two Supply Variants)

Part No:- 71.087.504

Weight:- 1.50 Kg 3.31 lb.

Dimensions:- 33 x 10 x 5 cm.  
13 x 4 x 2 in.



Date amendment is valid from 17/83

Stamp of F.I.A./R.A.C.



MOTOR SPORT DIVISION  
The Royal Automobile Club,  
31 Belgrave Square, London, S.W.1

Manufacturer *Chrysler UK Ltd*  
Model *Hillman Avenger 1500*  
F.I.A. Recognition No. *5407*  
Amendment No. *11/7V*

*Amendment to Form of Recognition*

FEDERATION INTERNATIONALE DE L'AUTOMOBILE

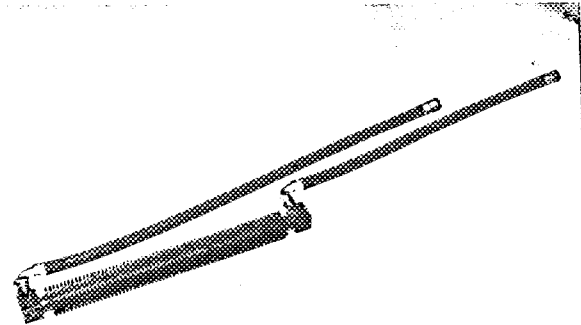
No.

Reference No.

*Part No:- 71.235.338*

*Weight:- 2.55kg 5.63 lb.*

*Dimensions:- 52 x 5 Dia. cm.  
20.5 x 2 Dia. in.*



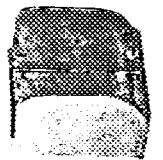
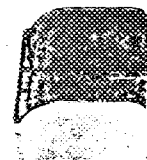
*152 Capacity, lubricant, becomes:- 4.25 ltrs 7.5 pts 4.5 quarts US*

*3. Engine restraints (attached to engine mounting brackets)*

*Weight:- .48 kg 1.1 lb. (each)*

*Dimensions:- 8.4 x 8 x 6 cm.  
3.3 x 3.1 x 2.4 in.*

*Part No:- 71.203.123.*



*292 4 Limited slip differential  
Type of differential :- 4 pinion.*

*Part No:- 71.203.101.*

*5 Axle ratio*

*293 Final drive ratio:- 4.11:1 37:9*



Date amendment is valid from *1/7/73*

Stamp of F.I.A./R.A.C.



MOTOR SPORT DIVISION  
The Royal Automobile Club,  
31 Belgrave Square, London, S.W.1

Manufacturer Chrysler UK Ltd  
Model Hillman Avenger 1500  
F.I.A. Recognition No. 5407  
Amendment No. 12/5E

*Amendment to Form of Recognition*

FEDERATION INTERNATIONALE DE L'AUTOMOBILE

No.	Reference No.
133	<u>Erratum - all models.</u> <u>Bore:- should be 86.19 mm 3.396 in.</u> <u>specified to three decimal place accuracy</u> <u>was:- 86.1 mm. 3.39 in.</u>

Date amendment is valid from 1.7.73

  
Stamp of F.I.A./R.A.C.



MOTOR SPORT DIVISION  
The Royal Automobile Club,  
31 Belgrave Square, London, S.W.1

Manufacturer *Chrysler U.K Ltd*  
Model *Hillman Avenger 1500*  
F.I.A. Recognition No. *5407*  
Amendment No. *13/EE*

*Amendment to Form of Recognition*

FEDERATION INTERNATIONALE DE L'AUTOMOBILE

No.

Reference No. *Erratum. - Avenger GT only*

*Amendment 4/3E*

*The term "Machined Finish" used for inlet and exhaust cylinder head ports should be "Hand Finished."*

Date amendment is valid from *1.3.73*

  
Stamp of F.I.A./R.A.C.



MOTOR SPORT DIVISION  
The Royal Automobile Club,  
31 Belgrave Square, London, S.W.1

Manufacturer Chrysler U.K. Ltd.  
Model Hillman Avenger 1500  
F.I.A. Recognition No. 5407  
Amendment No. 16/3E

*Amendment to Form of Recognition*

FEDERATION INTERNATIONALE DE L'AUTOMOBILE

No.	Reference No.	<u>Evolutionary Change - all models (except G.T.)</u>	
181	Diameter of inlet valves:-	36.8 mm.	1.45 in.
196	Diameter of exhaust valves:-	31.2 mm.	1.23 in.

Date amendment is valid from 1.7.33

Stamp of F.I.A./R.A.C.



MOTOR SPORT DIVISION  
The Royal Automobile Club,  
31 Belgrave Square, London, S.W.1

Manufacturer *Chrysler U.K. Ltd*  
Model *Hillman Avenger 1500*  
F.I.A. Recognition No. *5407*  
Amendment No. *15/8V*

*Amendment to Form of Recognition*

FEDERATION INTERNATIONALE DE L'AUTOMOBILE

No.

Reference No. *Production Variant - Avenger Super 2 Door*

*The specification of the 2 Door version of the Avenger 1500 Super, including all the options etc., is identical to the 4 Door version except for the following items:-*

9. *Weight:- 789 Kg · 1739 Lb 15.51 cwt.*  
24. *Number of doors:- 2*  
42. *Weight of front seat:- 11.8 Kg 26 Lb.*

A



Date amendment is valid from *1 7 73*

Stamp of F.I.A./R.A.C.





MOTOR SPORT DIVISION  
The Royal Automobile Club,  
31 Belgrave Square, London, S.W.1

Manufacturer Chrysler U.K. Ltd.  
Model Hillman Avenger 1500  
F.I.A. Recognition No. 5407  
Amendment No. 15/82

Amendment to Form of Recognition

FEDERATION INTERNATIONALE DE L'AUTOMOBILE

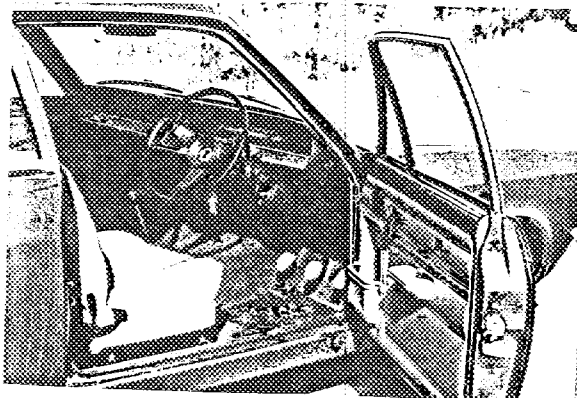
No.

Reference No. Production Variant - Super 2 Door

B



C



Date amendment is valid from .....

Stamp of F.I.A./R.A.C.



MOTOR SPORT DIVISION  
The Royal Automobile Club,  
31 Belgrave Square, London, S.W.1

Manufacturer Chrysler U.K Ltd.  
Model Hillman Avenger 1500  
F.I.A. Recognition No. 5407  
Amendment No. 16/9V

*Amendment to Form of Recognition*

FEDERATION INTERNATIONALE DE L'AUTOMOBILE

No. Reference No. Production Variant - 2 Door

*The specification of the 2 Door version of the Avenger 1500, including all the options etc., is identical to the 4 Door version except for the following items:-*

- 9 Weight:- 781 Kg                      1721 Lb.                      15.37 cwt.
- 24 Number of doors:-                      2
- 42 Weight of front seat:- 11.8 Kg                      26 Lb.



Date amendment is valid from 1-7-73

Stamp of F.I.A./R.A.C.



MOTOR SPORT DIVISION  
The Royal Automobile Club,  
31 Belgrave Square, London, S.W.1

Manufacturer *Chrysler U.K. Ltd.*  
Model *Hillman Avenger 1500*  
F.I.A. Recognition No. *5407*  
Amendment No. ....

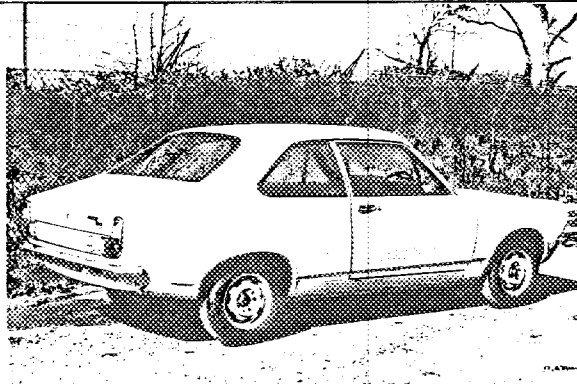
*Amendment to Form of Recognition*

FEDERATION INTERNATIONALE DE L'AUTOMOBILE

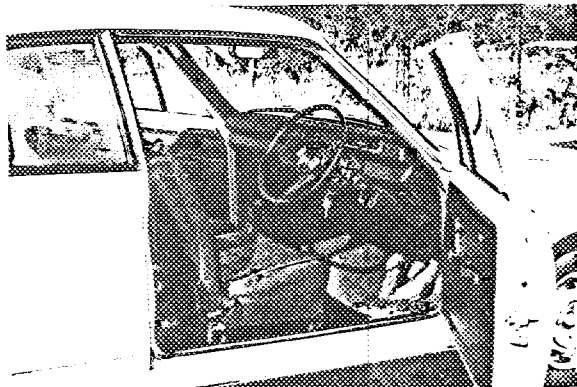
No.

Reference No. *Production Variant - 2 Door*

*B.*



*C.*



Date amendment is valid from .....

Stamp of F.I.A./R.A.C.



MOTOR SPORT DIVISION  
The Royal Automobile Club,  
31 Belgrave Square, London, S.W.1

Manufacturer Chrysler U.K. Ltd  
Model Hillman Avenger 1500  
F.I.A. Recognition No. 5407  
Amendment No. 17/10V

*Amendment to Form of Recognition*

FEDERATION INTERNATIONALE DE L'AUTOMOBILE

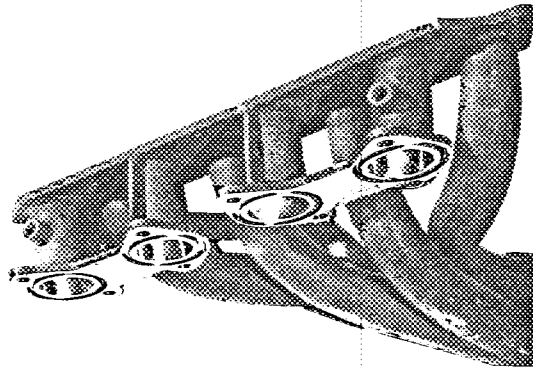
No.

Reference No. *Production Variant - Avenger GT.*

*Ref. Amendment No 7/3V. Photos P8Q - manifold*

*Strengthening webs added to inlet pipes to prevent fracture and possible loss of brake servo operation.*

*Normal evolution - performance and main characteristics remain unchanged.*



Date amendment is valid from 1.1.76

Stamp of F.I.A./R.A.C.



MOTOR SPORT DIVISION  
The Royal Automobile Club,  
31 Belgrave Square, London, S.W.1

Manufacturer Chrysler U.K. Ltd.  
Model Hillman Avenger 1500.  
F.I.A. Recognition No. 5407  
Amendment No. 18/11V

Amendment to Form of Recognition

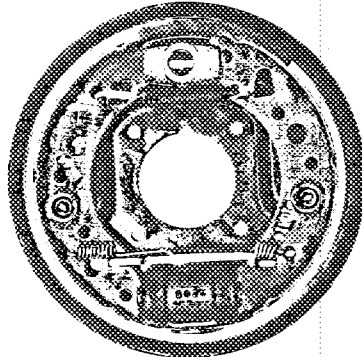
FEDERATION INTERNATIONALE DE L'AUTOMOBILE

No.

Reference No.

Supply Variant - alternative supplier - all models  
Rear brake assembly.

94. Bore of wheel cylinder:- 0.6875 in. 17.46mm.



Date amendment is valid from 1.1.74

Stamp of F.I.A./R.A.C.



MOTOR SPORT DIVISION  
The Royal Automobile Club,  
31 Belgrave Square, London, S.W.1

Manufacturer *Chrysler U.K. Ltd*  
Model *Hillman Avenger 1500*  
F.I.A. Recognition No. *5407*  
Amendment No. *19/12.V*

Amendment to Form of Recognition

FEDERATION INTERNATIONALE DE L'AUTOMOBILE

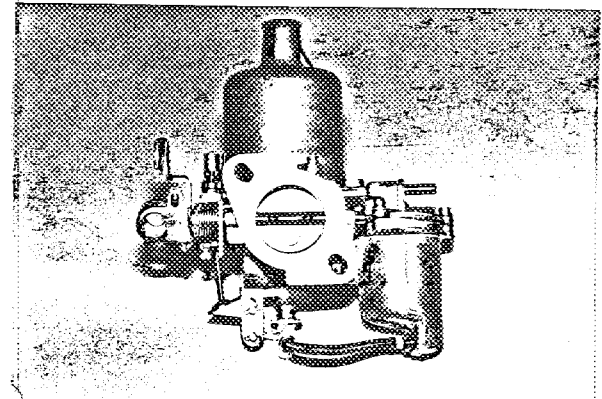
No. Reference No. *Avenger 1600 cont'd - Supply Variants.*

*Alternative carburettor supplier:- (except GT)*

212 Make:- *S.L.*

213 Model:- *HS4*

216 Min. dia with piston at max.  
*height:- 1.19 in. 30.23 mm.*



*Alternative clutch supplier:- (including GT)*

263 Dia. of linings, inside:- *13.33 cm. 5.25 in.*

Date amendment is valid from *1.6.74*

Stamp of F.I.A./R.A.C.



MOTOR SPORT DIVISION  
The Royal Automobile Club,  
31 Belgrave Square, London, S.W.1

Manufacturer Chrysler U.K. Ltd  
Model Hillman Avenger 1500  
F.I.A. Recognition No. 5407  
Amendment No. 20/8E

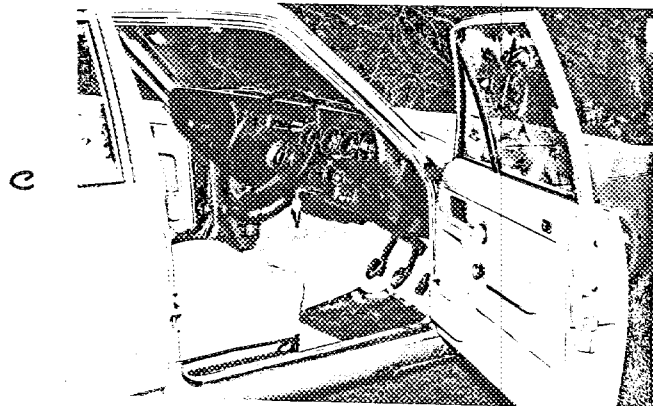
Amendment to Form of Recognition

FEDERATION INTERNATIONALE DE L'AUTOMOBILE

No.

Reference No. Normal Evolution - Avenger 1600 Super

The specification of the Avenger 1600 Super, including all options etc., is identical to the superseded Avenger Super [ref. amendment no 1] except for the normal evolutionary changes listed under "Hillman Avenger 1600" and those listed below, which apply to this Variant only



Date amendment is valid from 1.6.74

Stamp of F.I.A./R.A.C.



MOTOR SPORT DIVISION  
The Royal Automobile Club,  
31 Belgrave Square, London, S.W.1

Manufacturer *Chrysler U.K. Ltd*  
Model *Hillman Avenger 1500*  
F.I.A. Recognition No. *5407*  
Amendment No. *21/9E*

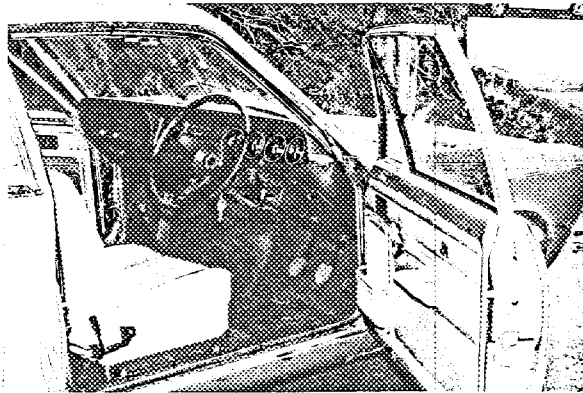
Amendment to Form of Recognition

FEDERATION INTERNATIONALE DE L'AUTOMOBILE

No.

Reference No. *Normal Evolution - Avenger 1600 Super - 2 Door*

*The specification of the Avenger 1600 Super - 2 Door, including all options etc. is identical to the superseded Avenger Super 2 Door [ref amendment no. 15/8v] except for the normal evolutionary changes listed under "Hillman Avenger 1600" and those listed below, which apply to this Variant only.*



Date amendment is valid from *1 6 74*

Stamp of F.I.A./R.A.C.





MOTOR SPORT DIVISION  
The Royal Automobile Club,  
31 Belgrave Square, London, S.W.1

Manufacturer Chrysler UK Ltd  
Model Hillman Avenger 1500  
F.I.A. Recognition No. 5407  
Amendment No. 22 / 10E

Amendment to Form of Recognition

FEDERATION INTERNATIONALE DE L'AUTOMOBILE

No.

Reference No. Normal Evolution - Hillman Avenger 1600 - 2 door.

The specification of the Hillman Avenger 1600 - 2 door, including all the options etc., is identical to the superceded Hillman Avenger 1500 - 2 door [ref amendment no. 16/ev] except for the normal evolutionary changes listed under "Hillman Avenger 1600."

Date amendment is valid from 1.4.74

Stamp of F.I.A./R.A.C.



MOTOR SPORT DIVISION  
The Royal Automobile Club,  
31 Belgrave Square, London, S.W.1

Manufacturer *Chrysler U.K. Ltd*  
Model *Hillman Avenger 1500*  
F.I.A. Recognition No. *5407*  
Amendment No. *23/13V*

Amendment to Form of Recognition

FEDERATION INTERNATIONALE DE L'AUTOMOBILE

No.

Reference No. *Normal Evolution - Avenger 1600 GL*

*The specification of the Avenger 1600 GL, including all optio.  
etc., is identical to the superceded Avenger GL [ref amendment  
no. 2] except for the normal evolutionary changes listed  
under "Hillman Avenger 1600."*

Date amendment is valid from *1 6 74*

Stamp of F.I.A./R.A.C.



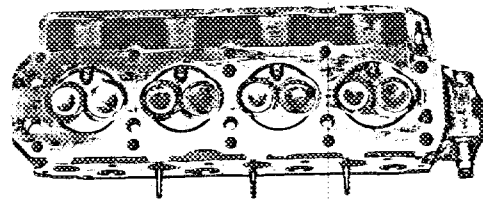
MOTOR SPORT DIVISION  
The Royal Automobile Club,  
31 Belgrave Square, London, S.W.1

Manufacturer *Chrysler U.K. Ltd.*  
Model *Hillman Avenger 1500*  
F.I.A. Recognition No. *5407*  
Amendment No. *2h/1hV*

Amendment to Form of Recognition

FEDERATION INTERNATIONALE DE L'AUTOMOBILE

- No. Reference No. *Production Variant - Avenger 1600 GT.*  
*Certain territories - to comply with the requirements of exhaust emission regulations and/or the availability of low lead (octane) fuels. -(Zenith CDS carburettors only)*
142. Compression ratio:- *8.6 : 1 ± 0.5*
143. Volume of one combustion chamber:- *10.2 cm<sup>3</sup> 1.11 in<sup>3</sup>*  
*19.5 cm<sup>3</sup> 1.19 in<sup>3</sup>*
- 143a. Compressed thickness of gasket:- *0.97/0.89 mm 0.038/0.035 in.*
181. Diameter of inlet valves:- *38.1 mm. 1.50 in.*
196. Diameter of exhaust valves:- *31.2 mm. 1.23 in.*
- 250 Max engine output:- *91 BHP gross @ 5500 RPM.*
252. Max torque:- *86 Lbf. ft. @ 3400 RPM.*
- 253 Max speed of car:- *100 MPH 160 KPH.*



Date amendment is valid from *1 h 76*

*[Signature]*  
Stamp of F.I.A./R.A.C.



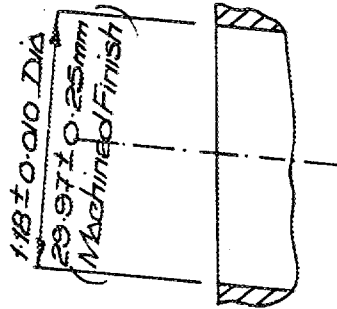
MOTOR SPORT DIVISION  
The Royal Automobile Club,  
31 Belgrave Square, London, S.W.1

Manufacturer *Chrysler U.K. Ltd*  
Model *Hillman Avenger 1500*  
F.I.A. Recognition No. *5407*  
Amendment No. *2h/1hV*

Amendment to Form of Recognition

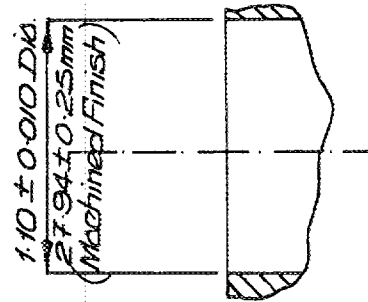
FEDERATION INTERNATIONALE DE L'AUTOMOBILE

No. Reference No. Production Variant - Avenger 1600GT cont'd



Inlet port of cylinder head

Exhaust port of cylinder head



Date amendment is valid from .....

Stamp of F.I.A./R.A.C.



MOTOR SPORT DIVISION  
The Royal Automobile Club,  
31 Belgrave Square, London, S.W.1

Manufacturer *Chrysler U.K. Ltd*  
Model *Hillman Avenger 1500*  
F.I.A. Recognition No. *5407*  
Amendment No. *25/15V*

Amendment to Form of Recognition

FEDERATION INTERNATIONALE DE L'AUTOMOBILE

No.	Reference No.	Production Variant
		<i>- Avenger 1600 GT - certain export territories - As amendment no. 7/3V except for the following normal evolutionary changes:-</i>
<i>216.</i>		<i>Min. dia. of venturi:- 32 mm.</i>
<i>250.</i>		<i>Max engine output:- 117 BHP gross @ 6,250 RPM</i>
<i>252.</i>		<i>Max torque:- 95 lbf. ft. @ 4,500 RPM</i>
<i>253.</i>		<i>Max speed of car:- 108 MPH 173 KPH.</i>

Date amendment is valid from *1 h 7h*

  
Stamp of F.I.A./R.A.C.



MOTOR SPORT DIVISION  
The Royal Automobile Club,  
31 Belgrave Square, London, S.W.1

Manufacturer *Chrysler U.K. Ltd*  
Model *Hillman Avenger 1500*  
F.I.A. Recognition No. *5407*  
Amendment No. *26/16V*

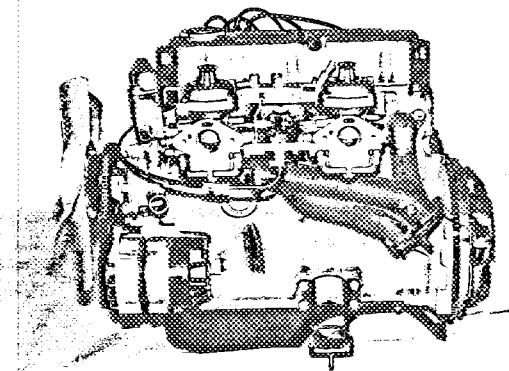
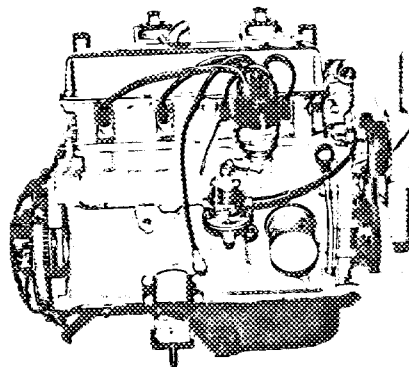
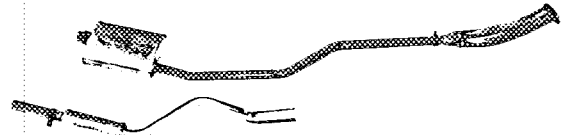
Amendment to Form of Recognition

FEDERATION INTERNATIONALE DE L'AUTOMOBILE

No.

Reference No. *Normal Evolution - Avenger 1600 GT*

*The specification of the Avenger 1600 GT, including all the options, production variants etc, is identical to the superseded Avenger GT [ref amendment no. 8/4V] except for the normal evolutionary changes listed below:-*



Data amendment is valid from *1.1.74*

Stamp of F.I.A./R.A.C.



MOTOR SPORT DIVISION  
The Royal Automobile Club,  
31 Belgrave Square, London, S.W.1

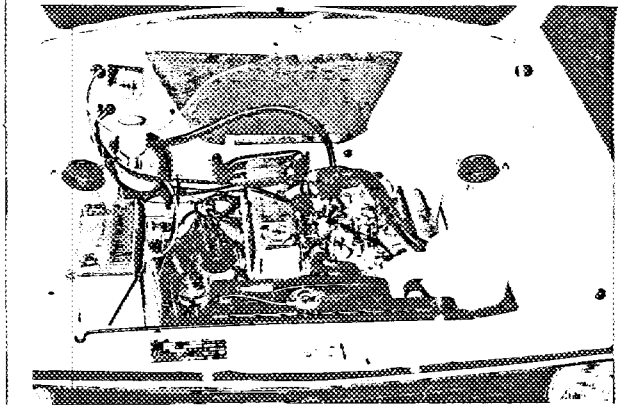
Manufacturer *Chrysler U.K. Ltd*  
Model *Hillman Avenger 1500*  
F.I.A. Recognition No. *5407*  
Amendment No. *26/16V*

Amendment to Form of Recognition

FEDERATION INTERNATIONALE DE L'AUTOMOBILE

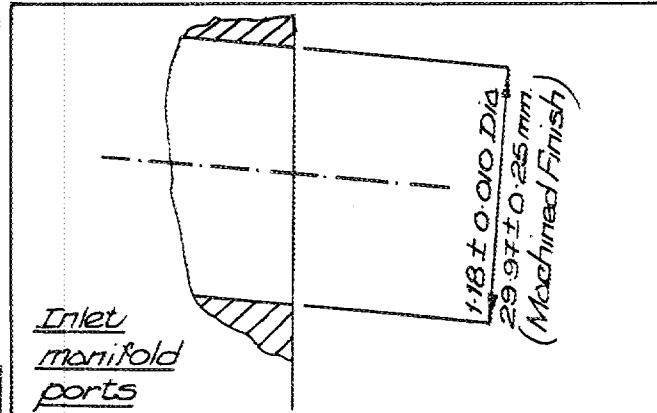
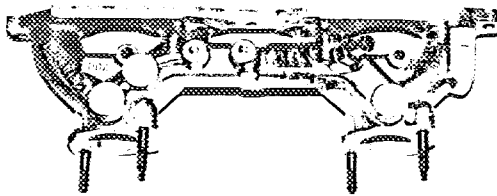
No. Reference No. *Avenger 1600 GT cont'd*

L

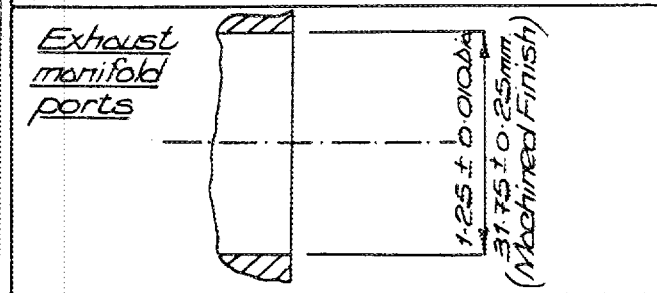
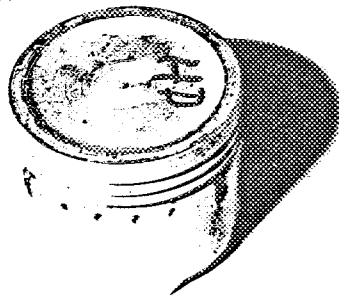


M

O



P



Date amendment is valid from .....

Stamp of F.I.A./R.A.C.



MOTOR SPORT DIVISION  
The Royal Automobile Club,  
31 Belgrave Square, London, S.W.1

Manufacturer Chrysler U.K. Ltd  
Model Hillman Avenger 1500  
F.I.A. Recognition No. 5407  
Amendment No. 26/16V

Amendment to Form of Recognition

FEDERATION INTERNATIONALE DE L'AUTOMOBILE

No.	Reference No.		
	Reference No. <u>Avenger 1600 GT cont'd</u>		
7.	Capacity of fuel tank:-	45.5 ltrs.	12 gall U.S. 10 gall Imp.
133.	Bore:-	3.440 in.	87.35 mm.
133a.	Overbore:-	Not possible.	
134.	Stroke:-	2.625 in.	66.67 mm.
135.	Capacity per cylinder:-	24.4 in <sup>3</sup>	399.5 cc.
136.	Total cylinder capacity:-	97.6 in <sup>3</sup>	1,598 cc.
142.	Compression ratio:-	9.4 : 1 ± 0.5	
160.	Flywheel weight (clear):-	17.3 15.6 Lb.	7.82 7.09 Kg
161.	Flywheel with clutch weight:-	28.3 25.6 Lb.	12.81 11.62 Kg
162.	Crankshaft weight:-	25.4 23.0 Lb.	11.52 10.44 Kg
163.	Connecting rod weight:-	1.70 1.54 Lb.	0.771 0.699 Kg
164.	Piston, rings & pin weight:-	1.55 1.40 Lb.	0.703 0.637 Kg
181.	Dia. of inlet valves:-	1.656 1.652 in.	42.06 41.96 mm.
250.	Max engine output:-	95 BHP gross @ 5,750 RPM	
252.	Max torque:-	90 lbf. ft @ 3,750	
253.	Max speed of car:-	102 MPH	163 KPH

Date amendment is valid from .....

Stamp of F.I.A./R.A.C.





MOTOR SPORT DIVISION  
The Royal Automobile Club,  
31 Belgrave Square, London, S.W.1

Manufacturer *Chrysler UK Ltd*  
Model *Hillman Avenger 1500*  
F.I.A. Recognition No. *5407*  
Amendment No. *27/13V*

*Amendment to Form of Recognition*

**FEDERATION INTERNATIONALE DE L'AUTOMOBILE**

No. Reference No. *Amendment No 2/1E, "Evolution - Alternative supplier - Avenger GT only."*

*This roadwheel, part no 71.264.072 is now additionally offered as a Production Option on all Avenger 1600 Variants.*

Date amendment is valid from *1 4 74*

Stamp of F.I.A./R.A.C.



MOTOR SPORT DIVISION  
The Royal Automobile Club,  
31 Belgrave Square, London, S.W.1

Manufacturer Chrysler U.K. Ltd  
Model Hillman Avenger 1500  
F.I.A. Recognition No. 5407  
Amendment No. 28/11E

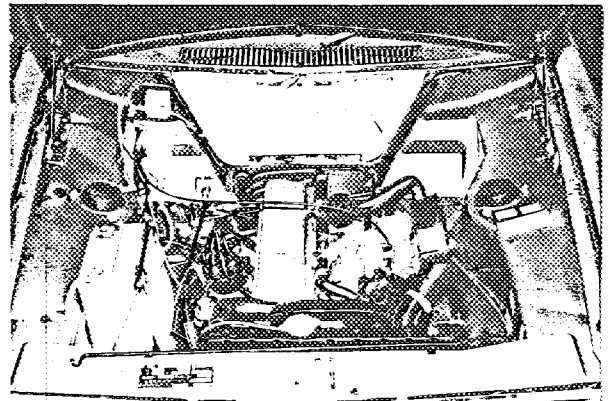
Amendment to Form of Recognition

FEDERATION INTERNATIONALE DE L'AUTOMOBILE

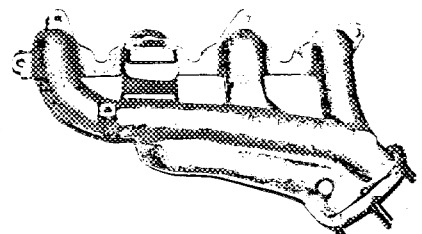
No.

Reference No. Avenger 1600 - cont'd

M



P



*Handwritten signature or mark*

Date amendment is valid from .....

Stamp of F.I.A./R.A.C.



MOTOR SPORT DIVISION  
The Royal Automobile Club,  
31 Belgrave Square, London, S.W.1

Manufacturer *Chrysler U.K. Ltd*  
Model *Hillman Avenger 1500*  
F.I.A. Recognition No. *5407*  
Amendment No. *28/11E*

Amendment to Form of Recognition

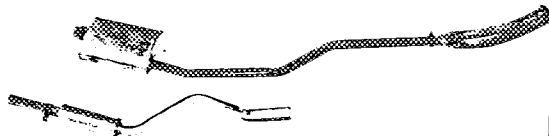
FEDERATION INTERNATIONALE DE L'AUTOMOBILE

No.

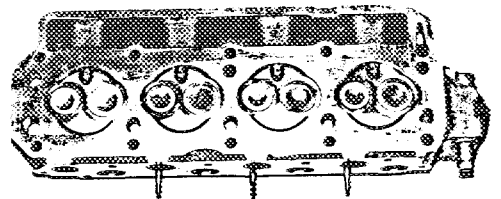
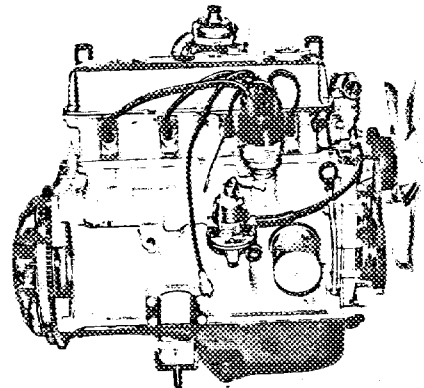
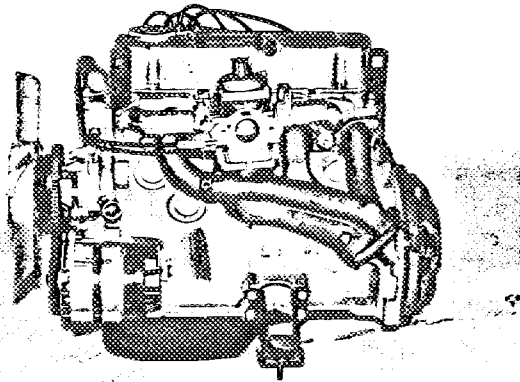
Reference No. *Normal Evolution - Hillman Avenger 1600*

*The specification of the Hillman Avenger 1600, including all options etc., is identical to the Hillman Avenger 1500 except for the following evolutionary changes listed below:-*

I



K



Date amendment is valid from *1.4.76*

Stamp of F.I.A./R.A.C.



MOTOR SPORT DIVISION  
The Royal Automobile Club,  
31 Belgrave Square, London, S.W.1

Manufacturer Chrysler UK Ltd  
Model Hillman Avenger 1500  
F.I.A. Recognition No. 5407  
Amendment No. 28/11E

Amendment to Form of Recognition

FEDERATION INTERNATIONALE DE L'AUTOMOBILE

No.	Reference No.	<u>Avenger 1600 - cont'd.</u>	
7	Capacity of fuel tank :-	45.5 ltrs.	12 gall U.S. 10 gall. Imp.
133	Bore :-	3.440 in.	87.35 mm.
133a.	Overbore :-	Not possible.	
134	Stroke :-	2.625 in.	66.67 mm.
135	Capacity per cylinder :-	24.4 in. <sup>3</sup>	399.5 cc
136	Total cylinder capacity :-	97.6 in. <sup>3</sup>	1,598 cc
142	Compression ratio :-	8.6 : 1 ± 0.5	
143	Volume of one combustion chamber :-	18.2 19.5 cm. <sup>3</sup>	1.11 1.19 in. <sup>3</sup>
143a.	Compressed thickness of gasket	0.97 0.89 mm.	0.038 0.035 in
156	Cooling fan dia. :-	33.0 cm.	13.0 in.
157	No. blades on cooling fan :-	6	
160	Flywheel weight (clean) :-	17.3 15.6 lb.	7.82 7.09 kg
161	Flywheel with clutch weight :-	28.3 25.6 lb.	12.81 11.62 kg
162	Crankshaft weight :-	25.4 23.0 lb.	11.52 10.44 kg
163	Connecting rod weight :-	1.70 1.54 lb.	0.771 0.699 kg
164	Piston, rings & pin weight :-	1.55 lb. 1.40.	0.703 0.637 kg

Date amendment is valid from .....

Stamp of F.I.A./R.A.C.



MOTOR SPORT DIVISION  
The Royal Automobile Club,  
31 Belgrave Square, London, S.W.1

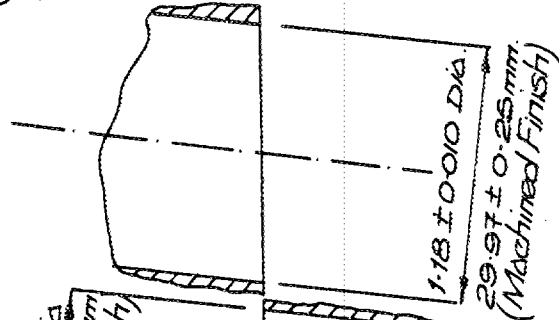
Manufacturer Chrysler UK Ltd  
Model Hillman Avenger 1500  
F.I.A. Recognition No. 5407  
Amendment No. 28/11E

Amendment to Form of Recognition

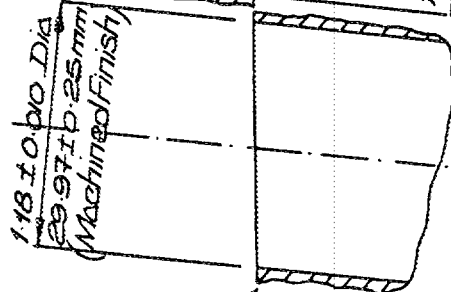
FEDERATION INTERNATIONALE DE L'AUTOMOBILE

No. Reference No. Avenger 1600 - cont'd

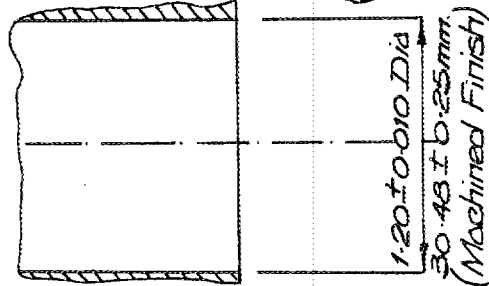
Inlet manifold  
ports



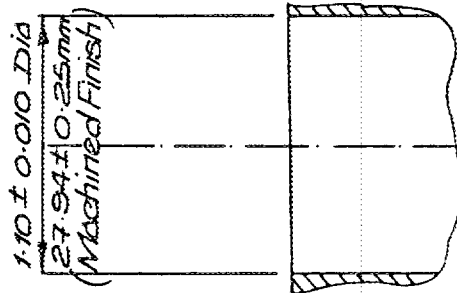
Inlet port of  
cylinder head.



Exhaust manifold  
ports



Exhaust port of  
cylinder head



Date amendment is valid from .....

Stamp of F.I.A./R.A.C.



MOTOR SPORT DIVISION  
The Royal Automobile Club,  
31 Belgrave Square, London, S.W.1

Manufacturer *Chrysler U.K. Ltd*  
Model *Hillman Avenger 1500*  
F.I.A. Recognition No. *5407*  
Amendment No. *28/11E*

Amendment to Form of Recognition

FEDERATION INTERNATIONALE DE L'AUTOMOBILE

No.	Reference No.	<i>Avenger 1600 - cont'd.</i>	
181.	<i>Dia. of inlet valves:-</i>	<i>38.1 mm.</i>	<i>1.50 in.</i>
182.	<i>Max valve lift:-</i>	<i>9.70 mm.</i>	<i>0.382 in.</i>
187.	<i>Inlet valves open:-</i>	<i>44° B.T.D.C.</i>	
188.	<i>Inlet valves close:-</i>	<i>86° A.B.D.C.</i>	
197.	<i>Max. exhaust valve lift:-</i>	<i>9.50 mm.</i>	<i>0.374 in.</i>
201.	<i>Tappet clearance (exhaust):-</i>	<i>0.406 mm.</i>	<i>0.016 in.</i>
202.	<i>Exhaust valves open:-</i>	<i>66° B.B.D.C.</i>	
203.	<i>Exhaust valves close:-</i>	<i>20° A.T.D.C.</i>	
204.	<i>Dia. outlet orifice exhaust manifold:-</i>	<i>38.1 mm.</i>	<i>1.25 in. (Two outlets)</i>
236.	<i>Generator type:-</i>	<i>alternator.</i>	
250.	<i>Max engine output:-</i>	<i>81 BHP gross @ 5,000 RPM.</i>	
252.	<i>Max torque:-</i>	<i>87 lb.f. ft. @ 2,900 RPM.</i>	
253.	<i>Max. speed of the car:-</i>	<i>95 MPH</i>	<i>151 KPH.</i>

Date amendment is valid from.....

Stamp of F.I.A./R.A.C.



MOTOR SPORT DIVISION  
The Royal Automobile Club,  
31 Belgrave Square, London, S.W.1

Manufacturer *Chrysler U.K. Ltd*  
Model *Hillman Avenger 1500*  
F.I.A. Recognition No. *5407*  
Amendment No. *28/11E*

Amendment to Form of Recognition

FEDERATION INTERNATIONALE DE L'AUTOMOBILE

No.	Reference No.	<i>Avenger 1600 - cont'd</i>		
<i>Camshaft</i>	<i>Inlet cam</i>			
		<i>0.865</i>	<i>21.97</i>	
	<i>S:-</i>	<i>0.860 in.</i>	<i>21.84 mm.</i>	
		<i>0.605</i>	<i>15.37</i>	
	<i>T:-</i>	<i>0.600 in.</i>	<i>15.24 mm.</i>	
		<i>1.210</i>	<i>30.73</i>	
	<i>U:-</i>	<i>1.200 in.</i>	<i>30.48 mm.</i>	
		<i>Exhaust cam</i>		
		<i>0.865</i>	<i>21.97</i>	
<i>S:-</i>	<i>0.860 in.</i>	<i>21.84 mm.</i>		
	<i>0.605</i>	<i>15.37</i>		
<i>T:-</i>	<i>0.600 in.</i>	<i>15.24 mm.</i>		
	<i>1.210</i>	<i>30.73</i>		
<i>U:-</i>	<i>1.200 in.</i>	<i>30.48 mm.</i>		

~~271 Automatic gearbox Borg Warner type 40~~  
~~275 No. for identification 1 Reverse 160 1.~~  
~~276 1ST 2ND 3RD 4TH 5TH 6TH 7TH 8TH 9TH 10TH 11TH 12TH~~

In accordance with Chrysler policy, this vehicle is marketed in certain territories under the following names:- *Sunbeam Plymouth Dodge*

Date amendment is valid from .....

Stamp of F.I.A./R.A.C.



MOTOR SPORT DIVISION  
The Royal Automobile Club,  
31 Belgrave Square, London, S.W.1

Manufacturer *Chrysler UK Ltd*  
Model *Hillman Avenger 1500*  
F.I.A. Recognition No. *5407*  
Amendment No. *29/18V*

00894 25.3.74  
INTERNATIONAL

Amendment to Form of Recognition

FEDERATION INTERNATIONALE DE L'AUTOMOBILE

No. Reference No. *Avenger 1600 - cont'd*

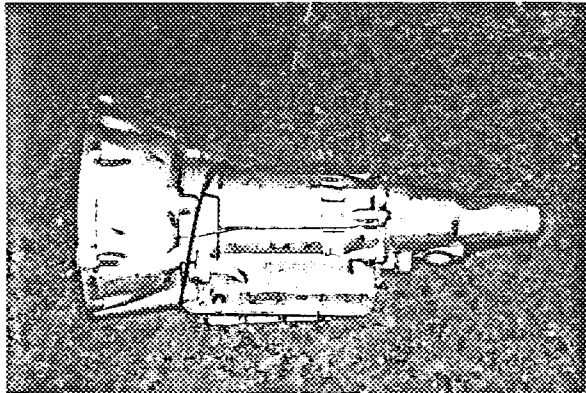
274. Automatic, make:- *Borg Warner type 45*
275. No. forward ratios:- *4. [Three epicyclic trains]*
276. Location of gearshift:- *central*
277. Ratios:- *1<sup>ST</sup>, 3.00:1. 2<sup>ND</sup>, 1.94:1. 3<sup>RD</sup>, 1.35:1. 4<sup>TH</sup>, 1.00:1. Rev., 4.69:1.*

Note, no. teeth as follows:- Gearbox comprises of three gear trains:-

*Forward* having 36 tooth sun gear, three pinions of 12 teeth, ring gear of 60 teeth. -  $\frac{36}{12} \times \frac{12}{60} = 1.00$

*Middle* having 26 tooth sun gear, four pinions of 24 teeth, ring gear of 74 teeth. -  $\frac{26}{24} \times \frac{24}{74} = 1.35$

*Rear* having 30 tooth sun gear, four pinions of 15 teeth, ring gear of 60 teeth. -  $\frac{30}{15} \times \frac{15}{60} = 1.94$



Ratios achieved as follows:-

$$1^{ST}:- \frac{X}{Y} + 1 = 3.00$$

$$2^{ND}:- \left[ \frac{Z}{Y} + 1 \right] + 1 = 1.94$$

$$3^{RD}:- \left[ \frac{1}{Y} + 1 \right] = 1.35$$

$$4^{TH}:- Direct = 1.00$$

$$Rev:- [X \times Y] - 1 = 4.69$$

Date amendment is valid from *1.4.76*

Stamp of F.I.A./R.A.C.





MOTOR SPORT DIVISION  
The Royal Automobile Club,  
31 Belgrave Square, London, S.W.1

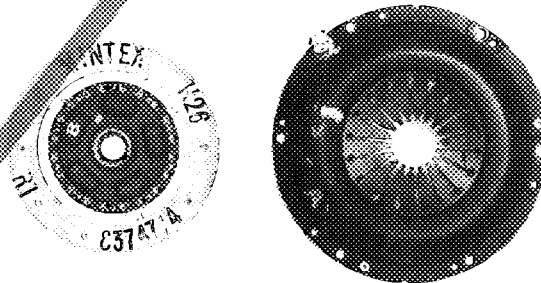
Manufacturer *Chrysler UK Ltd*  
Model *Hillman Avenger 1500*  
F.I.A. Recognition No. *5407*  
Amendment No. *30/19V*

Amendment to Form of Recognition

FEDERATION INTERNATIONALE DE L'AUTOMOBILE

*Group 2 only*

No.	Reference No.	<i>Optional equipment - larger diameter clutch.</i>	
161.	Weight of flywheel with clutch:-	30.8 27.6 Lb.	13.97 12.61 Kg.
262.	Dia. of clutch plates:-	8.5 in.	21.6 cm.
263.	Dia of linings, inside:-	5.75 in.	14.6 cm.
	outside:-	8.0 in.	20.3 cm.
	Part number of clutch cover assy:-	CTS 3027	
	" " " driven plate:-	CTS 3028.	



"valable en Groupe 2 uniquement"  
"valid for Group 2 only"

Date amendment is valid from *1.7.74*

Stamp of F.I.A./R.A.C.



MOTOR SPORT DIVISION  
The Royal Automobile Club,  
31 Belgrave Square, London, S.W.1

Manufacturer Chrysler UK Ltd.  
Model Hillman Avenger 1500  
F.I.A. Recognition No. 5407  
Amendment No. 31/20V

Amendment to Form of Recognition

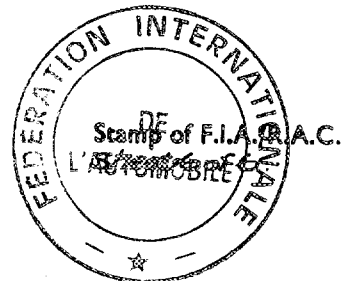
FEDERATION INTERNATIONALE DE L'AUTOMOBILE Group 2 only [1500cc.]

No. Reference No. "Bolt-on" optional equipment - cylinder head kit.

250.	Max. engine output:-	132 BHP (Gross) @ 6,000 rpm
251.	Max. r.p.m.:-	7,000.
252.	Max. torque:-	110 Lb.ft. @ 4,500 rpm
253.	Max. speed of car:-	115 mph. 184 kph
	Inlet & exhaust cams:-	
	S =	0.927 23.55 0.922 in 23.42 mm.
	T =	0.535 13.59 0.530 in 13.46 mm.
	U =	1.067 27.10 1.062 in 26.98 mm.

Part number of cylinder head kit [including all associated items such as camshafts, manifolds, carburettors, timing chain, pistons etc.]:- CTS 3075.

Date amendment is valid from .....





MOTOR SPORT DIVISION  
The Royal Automobile Club,  
31 Belgrave Square, London, S.W.1

Manufacturer *Chrysler UK Ltd.*

Model *Hillman Avenger 1500*

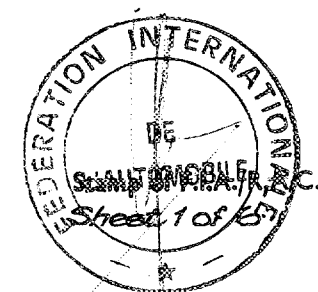
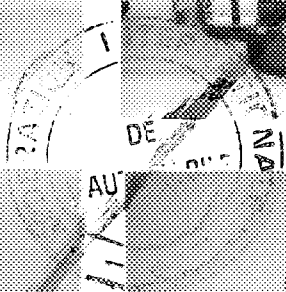
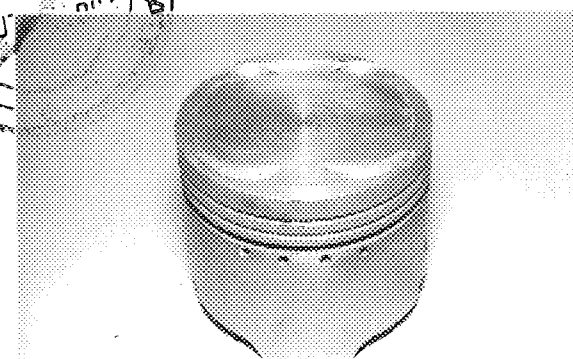
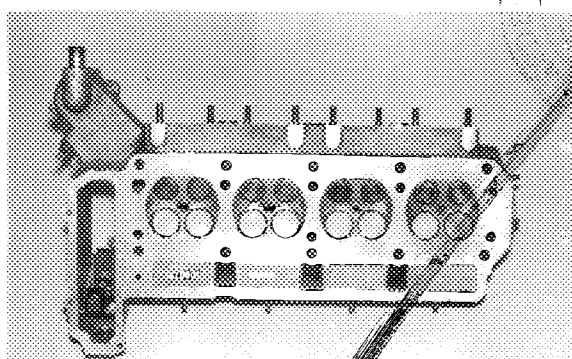
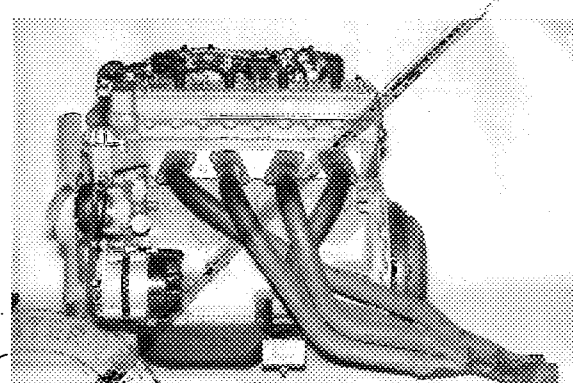
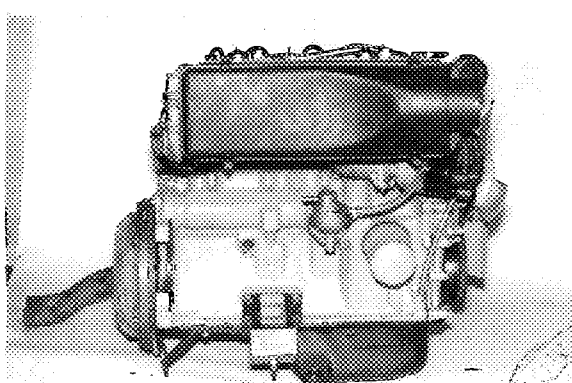
F.I.A. Recognition No. *5407*

Amendment No. *30/20V*

Amendment to Form of Recognition

FEDERATION INTERNATIONALE DE L'AUTOMOBILE *Group 2 only [1598cc.]*

No. Reference No. *"Bolt-on" optional equipment - cylinder head kit.*



Date amendment is valid from *1.9.77*



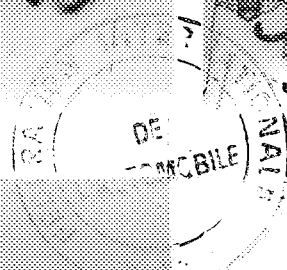
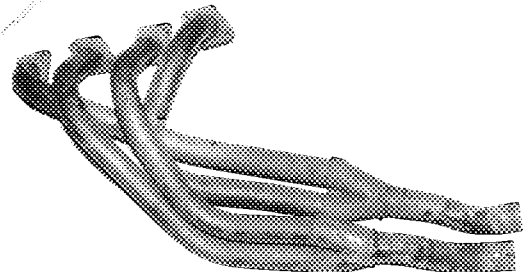
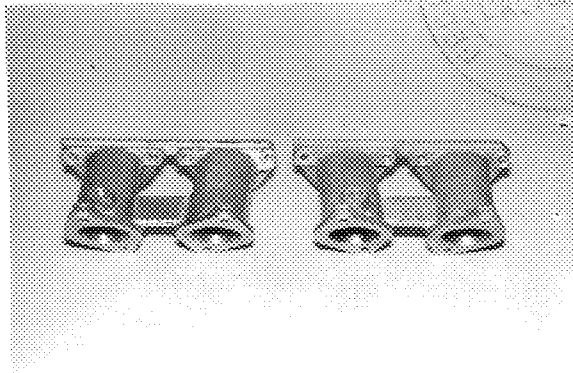
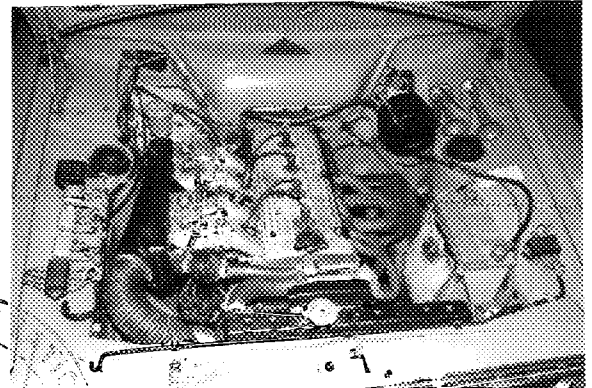
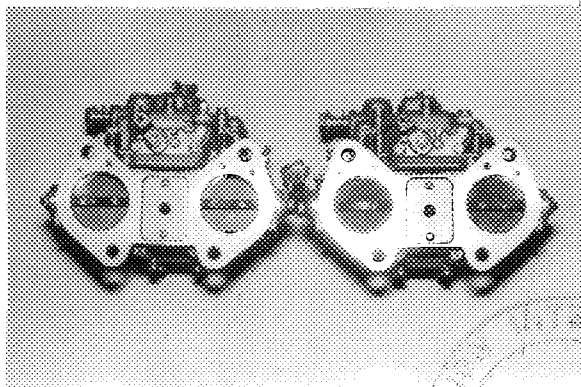
MOTOR SPORT DIVISION  
The Royal Automobile Club,  
31 Belgrave Square, London, S.W.1

Manufacturer Chrysler U.K. Ltd.  
Model Hillman Avenger 1500  
F.I.A. Recognition No. 5407  
Amendment No. 31/10V

Amendment to Form of Recognition

FEDERATION INTERNATIONALE DE L'AUTOMOBILE Group 2 only [1500cc]

No. Reference No. "Bolt-on" optional equipment - cylinder head kit.



Date amendment is valid from .....

Stamp of F.I.A./R.A.C.  
Sheet 2 of 6.



MOTOR SPORT DIVISION  
The Royal Automobile Club,  
31 Belgrave Square, London, S.W.1

Manufacturer Chrysler UK Ltd  
Model Hillman Avenger 1500  
F.I.A. Recognition No. 5407  
Amendment No. 31/20V

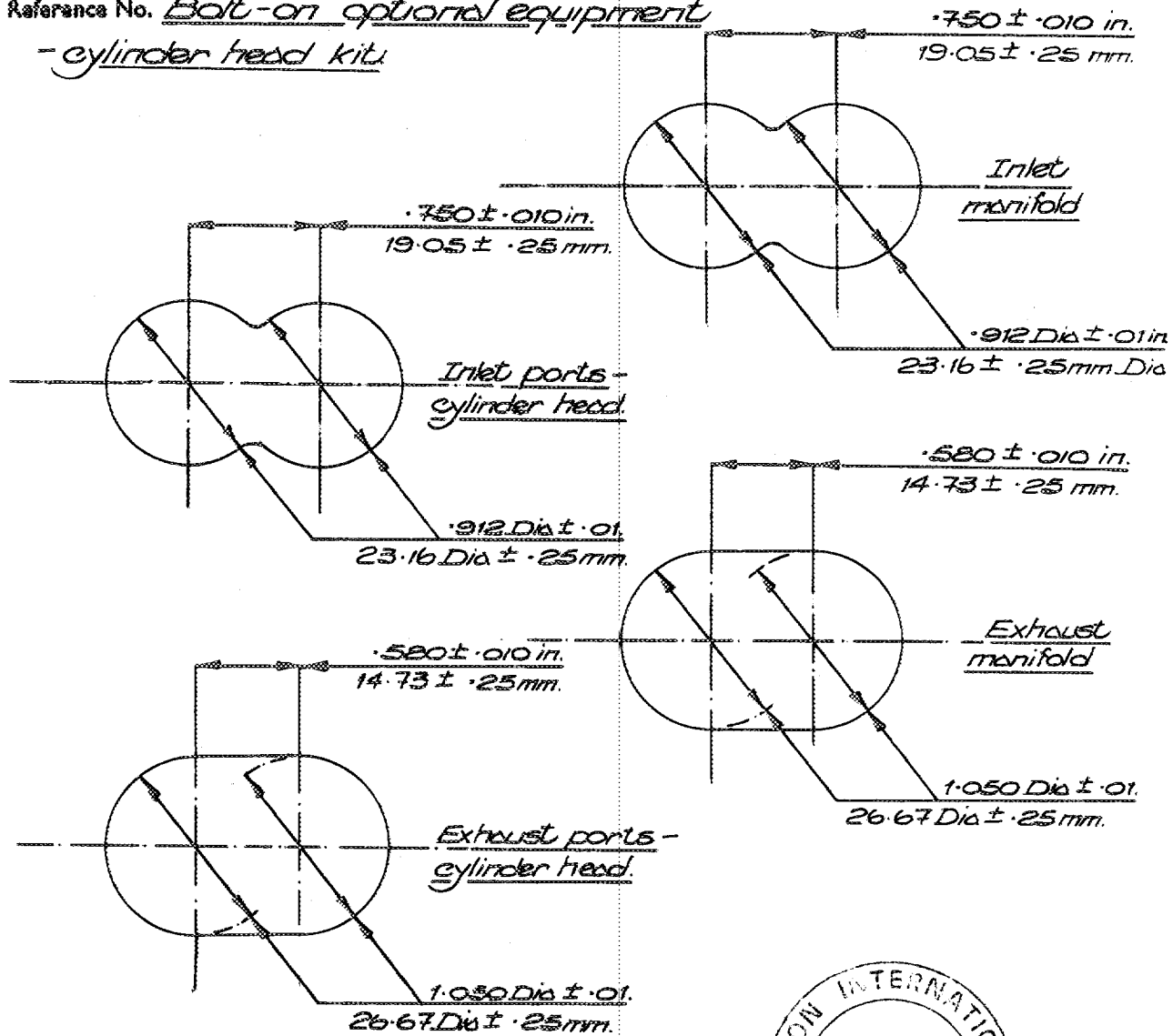
Amendment to Form of Recognition

FEDERATION INTERNATIONALE DE L'AUTOMOBILE Group 2 only [1593cc.]

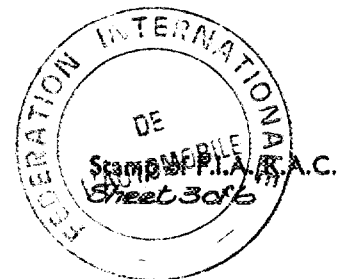
No.

Reference No. "Bolt-on" optional equipment

- cylinder head kit



Data amendment is valid from .....





MOTOR SPORT DIVISION  
The Royal Automobile Club,  
31 Belgrave Square, London, S.W.1

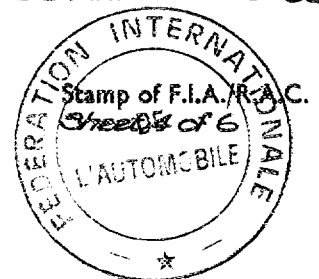
Manufacturer Chrysler UK Ltd  
Model Hillman Avenger 1500  
F.I.A. Recognition No. 5407  
Amendment No. 31/20V

Amendment to Form of Recognition

FEDERATION INTERNATIONALE DE L'AUTOMOBILE Group 2 only [1598cc.]

No.	Reference No.	
		<u>"Bolt-on" optional equipment - cylinder head kit.</u>
91.	Servo-assistance (if fitted), type:-	Girling, remote mounting
139.	Cylinder head, material:-	aluminium.
140.	Number of inlet ports:-	8
141.	Number of exhaust ports:-	8
142.	Compression ratio:-	9.5 : 1 ± .5
143.	Volume of one combustion chamber:-	23.0                      1.40 in. <sup>3</sup> 24.0 cc.                      1.46 in.
146.	Distance from g. pin to piston crown:-	1.775                      45.08 1.772 in.                      44.91 mm.
	Weight of:-	
164.	Piston with rings & pin:-	1.61 lb.                      0.730 Kg 1.46                      0.662 Kg
170.	Number of camshafts:-	2
171.	Location:-	In head.
173.	Type of valve operation:-	direct-tappet.
180.	Material of inlet manifolds:-	aluminium.
181.	Diameter of inlet valves:-	1.250                      31.75 1.248 in.                      31.70 mm.
182.	Max. valve lift:-	.381 in.                      9.68 mm.

Date amendment is valid from.....





MOTOR SPORT DIVISION  
The Royal Automobile Club,  
31 Belgrave Square, London, S.W.1

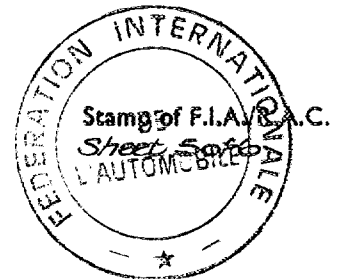
Manufacturer *Chrysler UK Ltd.*  
Model *Hillman Avenger 1500*  
F.I.A. Recognition No. *5407*  
Amendment No. *31/20V*

Amendment to Form of Recognition

FEDERATION INTERNATIONALE DE L'AUTOMOBILE *Group 2 only [1598cc.]*

No.	Reference No.	<i>"Bolt-on" optional equipment - cylinder head kit.</i>	
185.	No. inlet valves per cylinder:-	2	
186.	Tappet clearance for checking timing:-	.012 in.	0.305mm.
187.	Inlet valves open:-	43° BTDC.	
188.	Inlet valves close:-	67° ABDC	
196.	Diameter of exhaust valves:-	1.050 1.048 in.	26.67 26.62mm.
197.	Max valve lift:-	.378 in.	
200.	No. exhaust valves per cylinder:-	2	
201.	Tappet clearance for checking timing:-	.015 in.	0.381mm.
202.	Exhaust valves open:-	59° BBDC	
203.	Exhaust valves close:-	35° ATDC	
204.	Diameter of exhaust manifold outlet orifice:-	1.50 in.	38.1mm. twin outlet.
210.	No. carburettors fitted:-	2.	
212.	Make:-	Weber.	
214.	No. mixture passages per carburettor:-	2	
216.	Min. dia venturi:-	33 mm.	

Date amendment is valid from.....





MOTOR SPORT DIVISION  
The Royal Automobile Club  
31 Belgrave Square, London SW1X 8QH

Manufacturer Chrysler UK Ltd  
Model Hillman Avenger 1500  
F.I.A. Recognition No. S407  
Amendment No. 32/12 E

Amendment to Form of Recognition

FEDERATION INTERNATIONALE DE L'AUTOMOBILE

VALID IN GROUP.....1.....

No.

Reference No. Normal Evolution - Avenger 1600 - all variants [inc. GT]  
Certain export territories [to commonise with larger Avenger engine produced locally] - performance & main characteristics remain unchanged - not used with specification shown on amendment 24/14v, i.e. low compression cylinder head with CDS carburettors.

182. Max lift inlet valve :- 0.403 in. 10.24 mm.

187. Inlet valve opens at :- 64° B.T.D.C.

188. Inlet valve closes at :- 91° A.B.D.C.

197. Max lift exhaust valve :- 0.397 in. 10.08 mm.

202. Exhaust valve opens at :- 74° B.B.D.C.

203. Exhaust valve closes at :- 46° A.T.D.C.

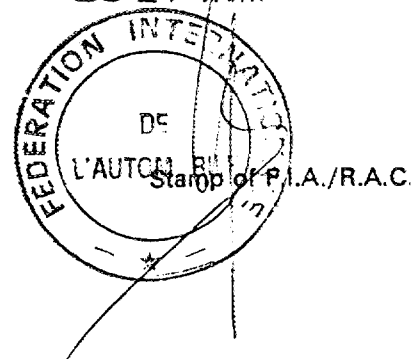
Inlet cam

S:-	0.850	21.59
	0.845 in.	21.46 mm.
T:-	0.575	14.61
	0.570 in.	14.48 mm.
U:-	1.160	29.46
	1.150 in.	29.21 mm.

Exhaust cam

S:-	0.850	21.59
	0.845 in.	21.46 mm.
T:-	0.575	14.61
	0.570 in.	14.48 mm.
U:-	1.160	29.46
	1.150 in.	29.21 mm.

Date amendment is valid from 1.10.74







**MOTOR SPORT DIVISION**  
**The Royal Automobile Club**  
**31 Belgrave Square, London SW1X 8QH**

Manufacturer *Chrysler UK Ltd*  
 Model *Hillman Avenger 1500*  
 F.I.A. Recognition No. *5407*  
 Amendment No. *33/13E*

*Amendment to Form of Recognition*

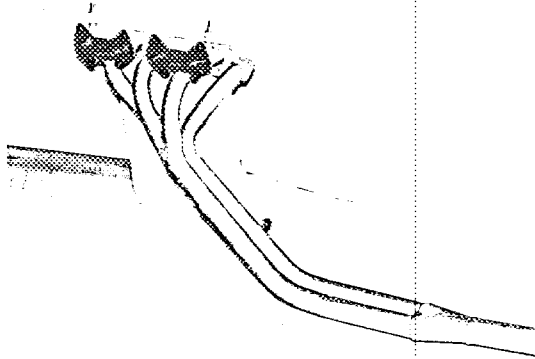
**FEDERATION INTERNATIONALE DE L'AUTOMOBILE**

**VALID IN GROUP.....1.....**

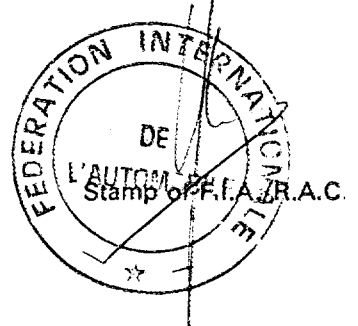
No.

Reference No. *Normal Evolution - Avenger 1600GT [ref. amend's 7/3V&25/5v]*

*Inlet & exhaust manifold - revised method of manufacture to increase rigidity & life - visual changes only. performance & main characteristics remain unchanged.*



Date amendment is valid from *1.11.74*





MOTOR SPORT DIVISION  
 The Royal Automobile Club  
 31 Belgrave Square, London SW1X 8QH

Manufacturer *Chrysler UK Ltd.*  
 Model *Hillman Avenger 1500*  
 F.I.A. Recognition No. *5407*  
 Amendment No. *34/21V*

Amendment to Form of Recognition

FEDERATION INTERNATIONALE DE L'AUTOMOBILE

VALID IN GROUP ..... *1* .....

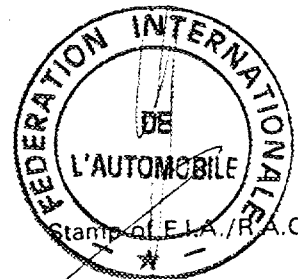
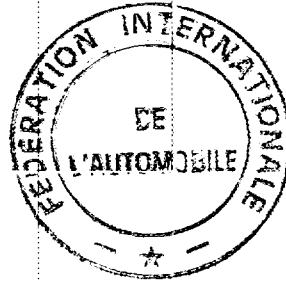
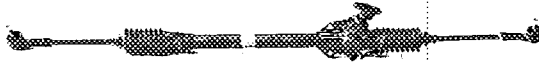
No.

Reference No. *Optional Equipment*

*Steering unit part no: - 71.203.215 - R.H.D.  
 71.203.233 - L.H.D.*

62.

*Number of turns from lock to lock: - 2.3.*



Date amendment is valid from *1.7.95*



MOTOR SPORT DIVISION  
The Royal Automobile Club  
31 Belgrave Square, London SW1X 8QH

Manufacturer Chrysler UK Ltd  
Model Hillman Avenger 1500  
F.I.A. Recognition No. 5407  
Amendment No. 35/22V

Amendment to Form of Recognition

FEDERATION INTERNATIONALE DE L'AUTOMOBILE

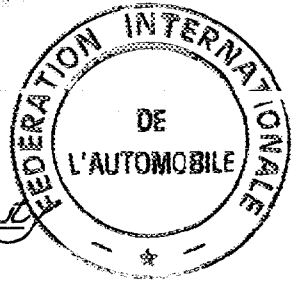
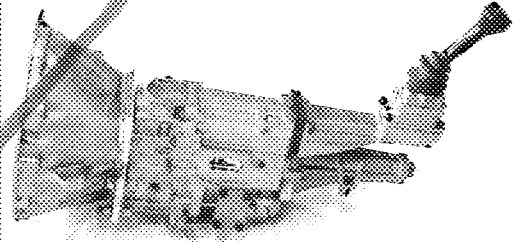
VALID IN GROUP... 2 only .....

No.

Reference No. Optional Equipment

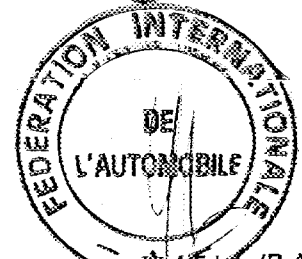
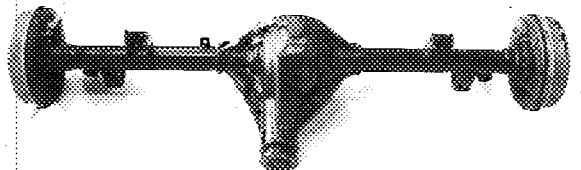
Alternative gearbox

- 270. Part no:- CTS 3126
- 271. Manual type, make:- ZF
- 272. No. gearbox ratios forward:- 5
- Synchronised forward ratios:- 5
- Weight:- 80 Lb. 36 Kg



Alternative axle assembly - extreme heavy duty

- 292. Part no:- 71.203.10
- Type of limited slip differential:- 4 pinion.
- 293. Final drive ratio: 4.55:1.
- No. of teeth:- 41:9
- 2. Rear track:-
- 50.7 in. 1287.8mm with 4.5in. rims.
- 50.5 in. 1282.7mm. With 5.0in rims.
- 51.2 in. 1300.5mm. with optional
- 5.0in rim - ref 2/1E
- 52.2 in. 1325.9mm. with optional
- 5.5in rim - ref 5/4E.
- Weight:- 170 Lb. 77.5 Kg



Date amendment is valid from... 1.7.75

Stamp of F.I.A./R.A.C.

"valable en Groupe 2 uniquement"  
"valid for Group 2 only"



MOTOR SPORT DIVISION  
 The Royal Automobile Club  
 31 Belgrave Square, London SW1X 8QH

Manufacturer Chrysler UK Ltd  
 Model Hillman Avenger 1500  
 F.I.A. Recognition No. 5407  
 Amendment No. 36/14E

Amendment to Form of Recognition

FEDERATION INTERNATIONALE DE L'AUTOMOBILE

VALID IN GROUP .....1.....

No.

Reference No. Normal evolution

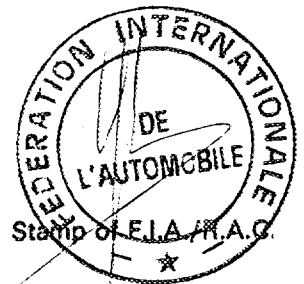
*Certain export territories [to commorise with larger  
 engined Avenger produced locally] - replaces ratios  
 quoted on amendment 3/2E.*

277

	Gearbox ratios	No. teeth.
1.	2.796	<del>31</del> 15
2.	1.729	<del>23</del> 18
3.	1.285	<del>19</del> 20
4.	1.000	<del>23</del> 17
Reverse	3.247	<del>36</del> 15

Date amendment is valid from

1775





MOTOR SPORT DIVISION  
The Royal Automobile Club  
31 Belgrave Square, London SW1X 8QH

Manufacturer *Chrysler UK Ltd*  
Model *Hillman Avenger 1500*  
F.I.A. Recognition No. *5407*  
Amendment No. *32/23V*

Amendment to Form of Recognition

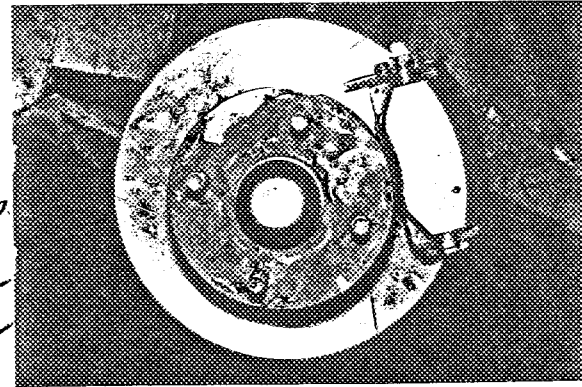
FEDERATION INTERNATIONALE DE L'AUTOMOBILE

VALID IN GROUP... 2... only... Optional Equipment

No. Reference No. *Calipers & brakes of different type and/or dimensions.*

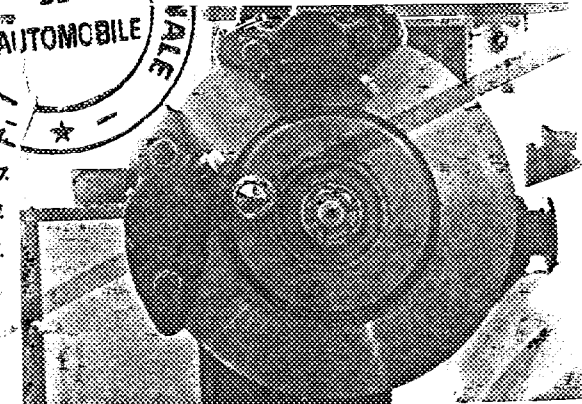
Front:- larger disc brakes.

- 93. Part no:- *CTS 3235, inc R&LH.*
- 94. No. cyls per wheel:- *4.*
- 94. Bore of wheel cyls:- *1.38in. 35mm.*
- 100. O. diameter of disc:- *10.4in. 264mm.*
- 101. Thickness of disc:- *.813in. 20.6mm.*  
*(ventilated)*
- 102. Length of lining:- *4.42in. 112mm.*
- 103. Width of lining:- *2.00in. 51mm.*
- 105. Total area per brake:- *17.68 sq. in.*  
*(max.) 11,400 sq. mm.*



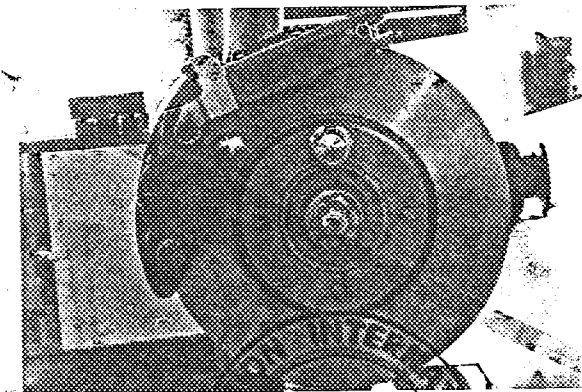
Rear - disc brake assembly

- 93. Part no:- *CTS 3237, inc R&LH.*
- 94. No. cyls per wheel:- *2.*
- 94. Bore of wheel cyls:- *1.75in. 44mm.*
- 100. O. diameter of disc:- *10.25in. 260mm.*
- 101. Thickness of disc:- *.38in. 9.6mm.*
- 102. Length of lining:- *2.70in. 68mm.*
- 103. Width of lining:- *1.64in. 42mm.*
- 104. No. pads per brake:- *2.*
- 105. Total area per brake:- *8.86 sq. in.*  
*(max.) 5,700 sq. mm.*



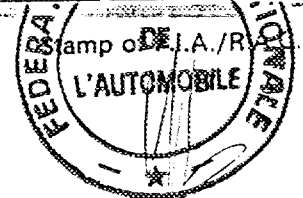
*Alternative handbrake system.*

*Part no:- CTS 3238 inc R&LH.*



Date amendment is valid from... 1.7.75

"valable en Groupe 2 uniquement"  
"valid for Group 2 only"





**MOTOR SPORT DIVISION**  
**The Royal Automobile Club**  
 31 Belgrave Square, London SW1X 8QH

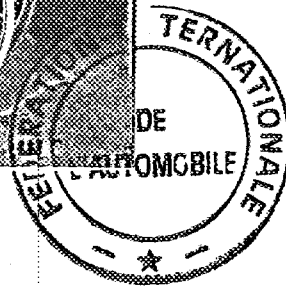
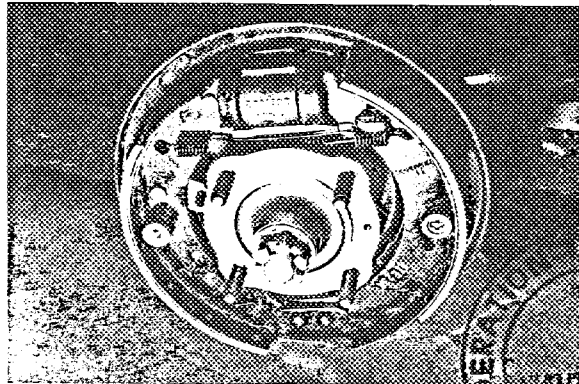
Manufacturer Chrysler UK Ltd  
 Model Hillman Avenger 1500  
 F.I.A. Recognition No. 5407  
 Amendment No. 32/23V

Amendment to Form of Recognition

FEDERATION INTERNATIONALE DE L'AUTOMOBILE

VALID IN GROUP.....2 only... Optional Equipment

No.	Reference No.	Calipers & brakes of different type and/or dimensions.
		<u>REAR - larger drum brakes.</u>
		<u>Part no:- CTS 3218 - inc. R&amp;LH.</u>
<u>94.</u>		<u>Bore of wheel cyls:- 1.75 in. 44 mm.</u>
<u>95.</u>		<u>Inside dia. of drum:- 9.0 in. 228 mm.</u>
<u>96.</u>		<u>Length of brake linings:- 8.75 in. 222 mm.</u>
<u>97.</u>		<u>Width of brake linings:- 1.75 in. 44 mm.</u>
<u>99.</u>		<u>Total area per brake(max):- 30.6 sq. in. 19,500 sq. mm.</u>



"valable en Groupe 2 uniquement"  
 "valid for Group 2 only"

Date amendment is valid from.....

Stamp of F.I.A./R.A.C.



MOTOR SPORT DIVISION  
 The Royal Automobile Club  
 31 Belgrave Square, London SW1X 8QH

Manufacturer Chrysler UK Ltd.  
 Model Avenger 1500  
 F.I.A. Recognition No. 5407  
 Amendment No. 38/ISE

Amendment to Form of Recognition

FEDERATION INTERNATIONALE DE L'AUTOMOBILE

VALID IN GROUP.....1.....

No.

Reference No. Heavy Duty specification.

The following additional items are now included in the  
Heavy Duty specification:-

1. Turret brace - front  
 suspension top mountings  
 to bulkhead.

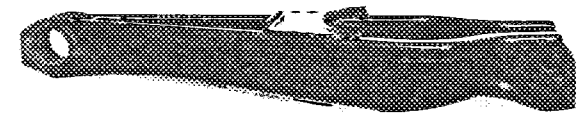
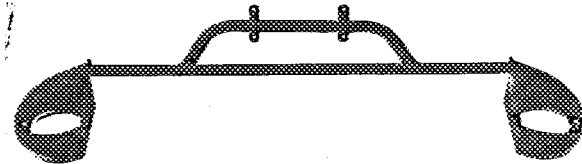
Weight:- 6 Lb. 2.7 Kg

Part no:- 71.203.127

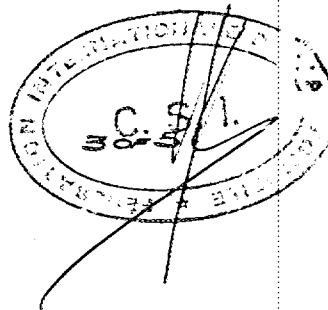
Note:- replaces part no.  
 71.238.039 when  
 dual braking master  
 cylinder is fitted.

2. Heavy duty axle - increased  
 tube thickness and retaining  
 pins.  
 Part no:- 71.203.135.

3. Rear suspension bottom link.  
 Part no:- 71.203.214.



Date amendment is valid from 1 JAN 1977



Stamp of F.I.A./R.A.C.



**MOTOR SPORT DIVISION**  
**The Royal Automobile Club**  
**31 Belgrave Square, London SW1X 8QH**

Manufacturer Chrysler UK Ltd  
 Model Avengeer 1500  
 F.I.A. Recognition No. 5407  
 Amendment No. 38/15E

*Amendment to Form of Recognition*

**FEDERATION INTERNATIONALE DE L'AUTOMOBILE**

**VALID IN GROUP.....1.....**

No.

Reference No. Heavy Duty Specification - cont'd  
 4. Front suspension crossmember  
 Part no:- 71.203.247.



Date amendment is valid from.....

Stamp of F.I.A./R.A.C







MOTOR SPORT DIVISION  
 The Royal Automobile Club  
 31 Belgrave Square, London SW1X 8QH

Manufacturer Chrysler UK Ltd  
 Model Avenger 1500  
 F.I.A. Recognition No. 5407  
 Amendment No. 39/16E

*Amendment to Form of Recognition*

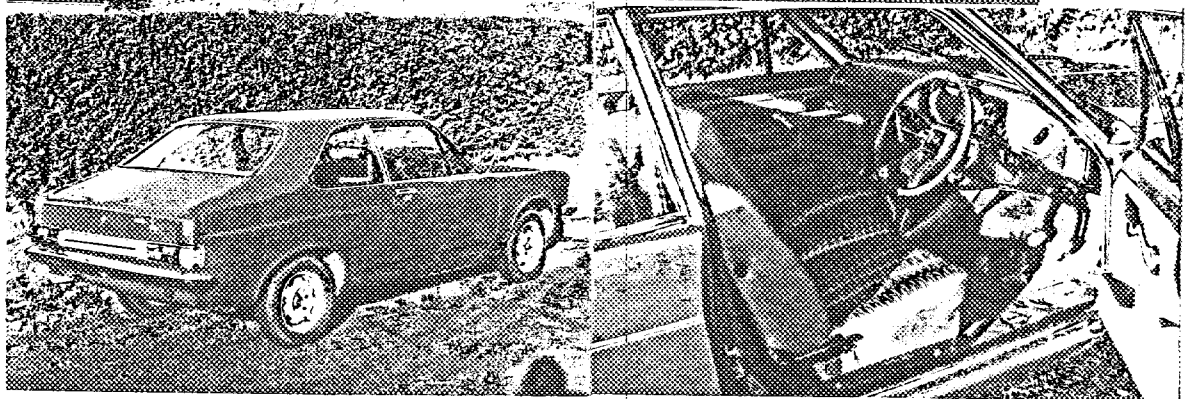
FEDERATION INTERNATIONALE DE L'AUTOMOBILE

VALID IN GROUP .....1.....

No.

Reference No. Avenger 1600 GT

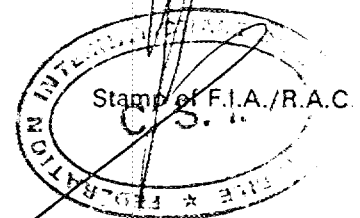
*Evolutionary change - revised front & rear styling, facia, interior trim and listed mechanical features.*



-1. JAN 1977

Date amendment is valid from.....

1055





**MOTOR SPORT DIVISION**  
**The Royal Automobile Club**  
**31 Belgrave Square, London SW1X 8QH**

Manufacturer Chrysler UK Ltd  
 Model Avengee 1500  
 F.I.A. Recognition No. 5407  
 Amendment No. 39/16E

*Amendment to Form of Recognition*

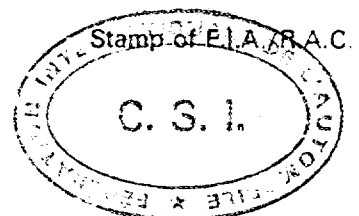
**FEDERATION INTERNATIONALE DE L'AUTOMOBILE**

**VALID IN GROUP.....1.....**

No.	Reference No.		
	<u>Avengee 1600 GT</u>	<u>cont'd</u>	
4	Overall length:-	414.4cm.	163.1 in.
5	Overall width:-	161.5cm.	63.6 in.
41	Front seats:-	Brush nylon on rubber diaphragm - reclining.	
43	Rear seats:-	Brush nylon on spring case.	
142 *	Compression ratio:-	10.0 to 10.5 : 1	
156	Cooling fan dia:-	25.4cm.	10.0 in. } except
157	Number of blades:-	4 - electrically driven } H. Duty	
250 *	Max. engine output:-	117 BHP Gross @ 6,000 RPM.	
252 *	Max torque:-	95 Lb. Ft. @ 4,300 RPM.	
*	Applies to Weber carburettor engine specification only - "Certain Export Territories" - ref. amendments 33/13E; 32/12E; 25/15V; 17/10V; 13/6E; 7/3V; 4/3E. Engine capacity, component weights and inlet valve dia shown on 26/16V.		

Date amendment is valid from.....

205





MOTOR SPORT DIVISION  
 The Royal Automobile Club  
 31 Belgrave Square, London SW1X 8QH

Manufacturer Chrysler UK Ltd  
 Model Avenger 1500  
 F.I.A. Recognition No. 5407  
 Amendment No. 40/24U

Amendment to Form of Recognition

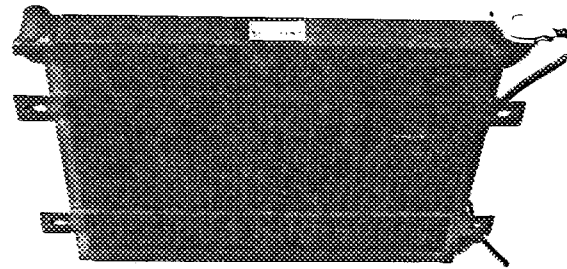
FEDERATION INTERNATIONALE DE L'AUTOMOBILE

VALID IN GROUP.....4.....

No.

Reference No. Production Variant - basic specification in certain territories.

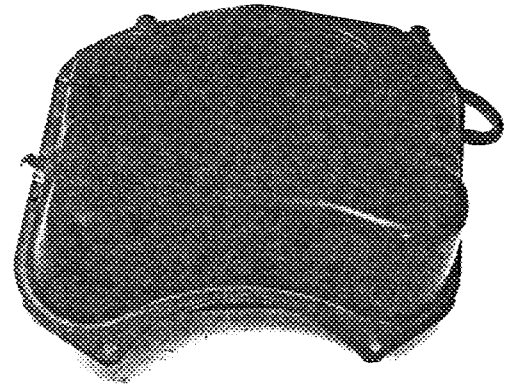
1. Hot climate radiator  
 Part no:- 71.203.128.



2. Larger capacity fuel tank

7

Capacity of fuel tank:-  
63.6 ltrs. 16.8 gal U.S. 14 gal Imp.  
 Part no:- 71.203.109



3. Dual braking system - to comply with legislative requirements.

92

No. hydraulic master cylinders:- 2.  
 Part no. master cyl / servo assembly:- 75061181/75061177 R. 75061153 L.H

4. Axle ratio

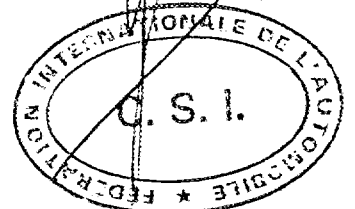
293

Final drive ratio:- 3.70 : 1. No. of teeth:- 37 : 10

Date amendment is valid from 1.1.77

S.O.F.S.

Stamp of F.I.A./R.A.C.





**MOTOR SPORT DIVISION**  
**The Royal Automobile Club**  
 31 Belgrave Square, London SW1X 8QH

Manufacturer Chrysler UK Ltd  
 Model Avenger 1500  
 F.I.A. Recognition No. 5407  
 Amendment No. 41/17E

*Amendment to Form of Recognition*

**FEDERATION INTERNATIONALE DE L'AUTOMOBILE**

VALID IN GROUP.....1.....

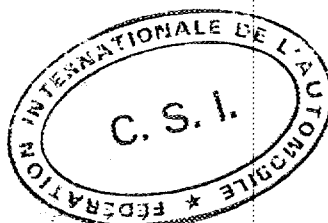
No. Reference No. Avenger 1500 GT

*Normal Evolutionary Change — rationalisation and ease of production.*

277.	1 <sup>st</sup> Gear	2.675	$\frac{30}{13} \times \frac{22}{19}$	superceded	2.796	$\frac{31}{15} \times \frac{23}{17}$
	2 <sup>nd</sup> Gear	1.634	$\frac{24}{17} \times \frac{22}{19}$	"	1.729	$\frac{23}{18} \times \frac{23}{17}$
	3 <sup>rd</sup> Gear	1.280	$\frac{21}{19} \times \frac{22}{19}$	"	1.285	$\frac{19}{20} \times \frac{23}{17}$
	4 <sup>th</sup> Gear	1.000	Direct	"	1.000	Direct
	Reverse	2.779	$\frac{36}{15} \times \frac{22}{19}$	"	3.247	$\frac{36}{15} \times \frac{23}{17}$

Date amendment is valid from.....1.4.77.....

Stamp of F.I.A./R.A.C.





**MOTOR SPORT DIVISION**  
**The Royal Automobile Club**  
**31 Belgrave Square, London SW1X 8QH**

Manufacturer Chrysler UK Ltd  
 Model Averger 1600  
 F.I.A. Recognition No. 5407  
 Amendment No. 42/25V

*Amendment to Form of Recognition*

**FEDERATION INTERNATIONALE DE L'AUTOMOBILE**

**VALID IN GROUP.....1.....**

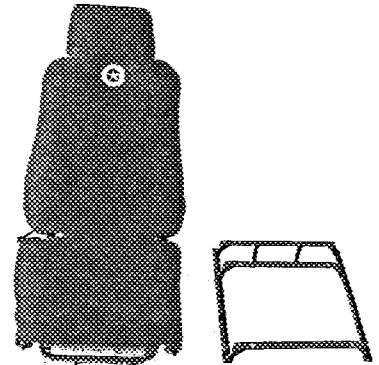
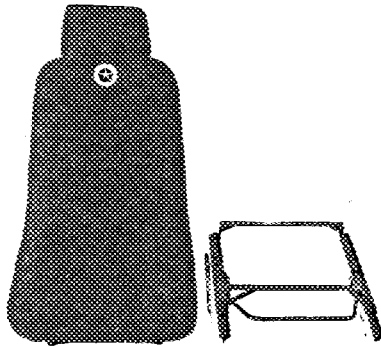
No.

Reference No.



*Safety fuel tank. FIA-FT3.*  
*7. Capacity :- 63.6 ltrs.*  
*16.8 galls U.S.*  
*14 galls Imp.*

*Manufactured by:-*  
*Manston Excelsior Ltd.*  
*Part no:- CTS 3130*



42. *Weight of seat, with subframes, without optional headrest shown.*

*Fixed back:- 23 Lbs. 10.4 Kg*

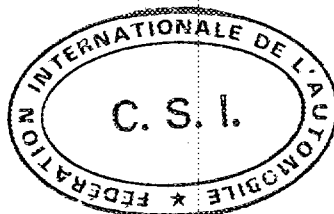
*Recliner:- 28 Lbs. 12.7 Kg*

*Reference - Chrysler Sports Seat - fixed back - part no - CTS 3317*

*" " " - recliner - " - CTS 3318.*

*Note:- subframes are interchangeable, to suit particular needs of occupants.*

Date amendment is valid from 1.7.77



*[Signature]*  
 Stamp of F.I.A./R.A.C.



MOTOR SPORT DIVISION  
 The Royal Automobile Club  
 31 Belgrave Square, London SW1K 8QH

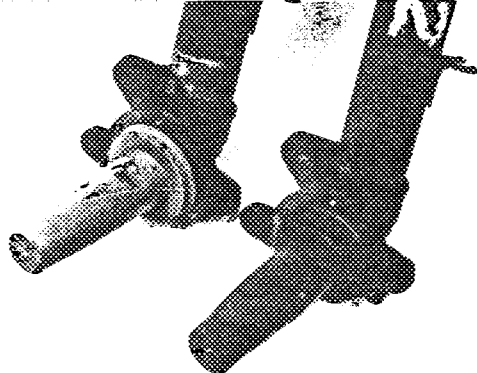
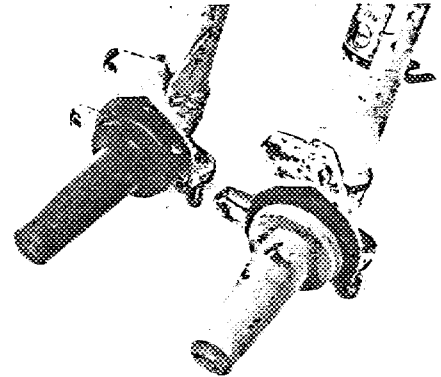
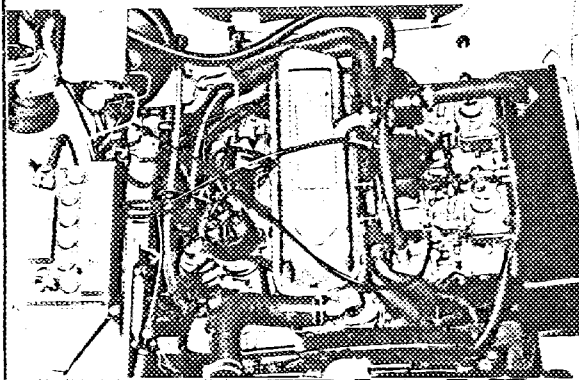
Manufacturer Chrysler UK Ltd  
 Model Avengeur 1500  
 F.I.A. Recognition No. 5407  
 Amendment No. 43/18 E

Amendment to Form of Recognition

FEDERATION INTERNATIONALE DE L'AUTOMOBILE

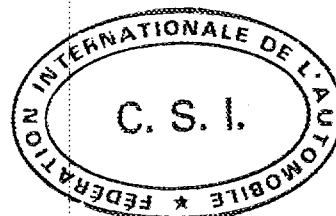
VALID IN GROUP.....1.....

- |      |   |
|------|---|
| No.  | Reference No. <u>Normal Evolutionary Change</u>   |
|      | 1. Revised aircleaner assembly with Weber carburettors - ref. photo 1.                        |
| 196. | Dis. of exhaust valves:- <del>35.02</del> 35.92 mm. 1.42 in. - Weber spec<br>1.41 in.         |
| 216. | Min. dia. venturi:- 33 mm - Weber carbs.  |
|      | 2. Front track increased by 1.0 in. 25.4 mm.  |
|      | 3. Front strut assy - stub reinforcements added to Heavy Duty specification - ref. photo 2.   |
|      | 4. Heavy Duty track rod ends added to specification.<br>Part no:- 75.062.052. - ref. photo 3. |



Date amendment is valid from.....1 AVR 1978

Stamp of F.I.A./R.A.C



LISTE ADDITIONNELLE D'HOMOLOGATION 1978 / 11  
 ADDITIONAL HOMOLOGATION LIST 1978 / 11

*Valable à partir du / Valid as from 1 / 1 / 79*

(GB) GRANDE-BRETAGNE

CHRYSLER

5719 Avenger 1600 GT (1590 cc) Séparation de la fiche No. 5407 (Avenger 1500). Voir à  
 « Rectifications d'Homologations ».  
 13/8E Errata : Freins pour axe AR de 7/5E.

RECTIFICATIONS D'HOMOLOGATIONS

HOMOLOGATION CORRECTIONS

La Chrysler Avenger 1600 GT (1590 cc) est séparée de la Chrysler Avenger 1500 (No. 5407) à partir du 1/1/79. — *The Chrysler Avenger 1600 GT (1590 cc) is separated from the Chrysler Avenger 1500 (No. 5407) as and from 1/1/79.*

La liste des extensions d'homologation de la 1600 GT est la suivante : — *The list of homologation extensions of the 1600 GT is as follows :*

1/1E	Roues Dimensions / <i>Wheel Dimensions</i>	(remplaçant / <i>replacing</i> 2/1E)
2/2E	Roues Dimensions / <i>Wheel Dimensions</i>	(remplaçant / <i>replacing</i> 5/4E)
3/1V	Freins AR / <i>Rear Brakes</i>	(remplaçant / <i>replacing</i> 18/11V)
4/2V	Embrayage — Direction / <i>Clutch — Steering</i>	(remplaçant / <i>replacing</i> 19/12V & 34/21V)
5/3E	Arbre à cames / <i>Camshaft</i>	(remplaçant / <i>replacing</i> 32/12E)
6/4E	Rapports de B.V. / <i>Gear-box ratios</i>	(remplaçant / <i>replacing</i> 36/14E)
7/5E	Carrosserie — Intérieur — Ventilateur — Taux de Compression — Dimensions — Suspension — Axe AR / <i>Bodywork — Interior — Fan - Compression ratio — Dimensions — Suspension — Rear axle</i>	(remplaçant / <i>replacing</i> 36/16E & 38/15E)
8/6E	Rapports de B.V. / <i>Gear-box ratios</i>	(remplaçant / <i>replacing</i> 41/17E)
9/3V	Réservoir — Sièges / <i>Petrol tank — Seats</i>	(remplaçant / <i>replacing</i> 42/25V)
10/7E	Suspension — Moteur — Direction / <i>Suspension — Engine — Steering</i>	(remplaçant / <i>replacing</i> 43/18 E)
11/4V	Suspension — Moteur — Différentiel action limitée — Axe AR / <i>Suspension — Engine — Limited-slip differential — Rear Axle</i>	(remplaçant / <i>replacing</i> 10/6V & 11/7V)
12/5V	Radiateur — Réservoir Essence — Freins — Rapport de Pont / <i>Radiator — Petrol Tank — Brakes — Axle ratios</i>	(remplaçant / <i>replacing</i> 40/24 V)
13/8E	Errata : Freins pont axe AR de 7/5E / <i>Rear axle brakes of 7/5E.</i>	

En conséquence, les extensions suivantes sont supprimées de la fiche de la Chrysler Avenger 1500 (No. 5407)  
 à partir du 1/1/79 :

*As a result the following extensions are deleted from the Chrysler Avenger 1500 form (No. 5407) as and from 1/1/79 :*

2/1E — 4/3E — 7/3V — 8/4V — 9/5V — 13/6E — 17/10V — 24/14V — 25/15V  
 26/16V — 27/17V — 28/11E — 29/18V — 32/12E — 33/13E — 39/16E — 41/17E



HILLMAN AVENGER 1500

4/71

5407

MARQUE ET MODELE

VALIDITE HOMOLOGATION

FICHE NR.

1/1600

GRUPE / CLASSE

EXTENSIONS	DEBUT VALIDITE	DESCRIPTION	NOTES
1/1V	4/71	MODELE AVENGER SUPER - CL - GT - BOITE AUTOMAT - SUSPENSION	
2/1E		JANTE - VOIE	Supprimée 1979
3/2E	4/72	RAPPORTS	
4/3E	20/72	MOTEUR	Supprimée 1979
5/4E	10/72	JANTE - VOIE	
6/2V	10/72	MOTEUR	
7/3V		COLLECTEURS ADM/ECM.	Supprimée 1979
8/4V	7/73	CARBURATEUR	
9/5V	7/73	MODELE 2 PORTES	Supprimée 1979
10/6V	7/73	BARRE ANTI RAPPROCHEMENT	Supprimée 1979
11/7V	7/73	RADIATEUR D'HUILE RADIATEUR D'HUILE - DIFFERENTIEL AUTOBLOQUANT	
12/5E	7/73	ALÉSAGE	
13/5E	7/73	COLLECTEURS ADM/ECM.	Supprimée 1979
14/7E	7/73	500 PAGES	

Autres homologations du modèle

Vérifiée le 24/2/96 par [Signature] visée ce jour le \_\_\_\_\_ par \_\_\_\_\_





HILLMAN AVENUEER 1500

4/74

5407

MARQUE ET MODELE

VALIDITE HOMOLOGATION

FICHE NR.

1/1600

GROUPE / CLASSE

EXTENSIONS	DEBUT VALIDITE	DESCRIPTION	NOTES
15/81	2/73	MODELE SUPER 2 PORTES	
16/9V	2/73	" 2 PORTES	
17/10V	1/74	COLLECTEUR ADH/ECH.	Supprimée 1979
18/11V	1/74	FREIN	
19/12V	4/74	CARBURATEUR - EMBRAYAGE	
20/8E	4/74	AVENUEER 1600 SUPER	
22/10E	4/74	AVENUEER 1600 3 PORTES	
23/13V	4/74	AVENUEER 1600 CL	
24/14V	4/74	CLASSE	Supprimée 1979
25/15V	4/74	CARBURATEUR	Supprimée 1978
26/16V	4/74	MOTEUR <sup>1600</sup> - 2 CARBS. - ECHAPP.	Supprimée 1978
27/17V	.	CLASSE	Supprimée 1978
28/18E	.	PISTON - COLLECTEURS ADH/ECH.	Supprimée 1979
29/19V	4/74	CLASSE - ECHAP PRESENT	
30/19V	7/74	MOTEUR	
31/20V	9/74	BOITE AUTOMATIQUE	Supprimée 1979
		EMBRAYAGE	
		CLASSE 16S - COLLECTEUR ECH.	Supprimée 1976

Autres homologations du modèle

Vérifiée le 26/7/86 par [Signature] visée ce jour le \_\_\_\_\_ par \_\_\_\_\_



MARQUE ET MODELE

VALIDITE HOMOLOGATION

FICHE NR.

GRUPE / CLASSE

EXTENSIONS	DEBUT VALIDITE	DESCRIPTION	NOTES
32/11E	10/74	PISTON - COLLECTEUR ADJ. CARBURETEURS	Supprimée 1978
33/13E	11/74	ARBRE A CARRES	
34/21V	7/75	CONNECTEURS RAM/ECH	Supprimée 1979
35/22V	7/75	DIRECTION	
36/14E	2/75	BOITE 3 VITESSES - AXE AR - DIFFERENTIEL AUTOBLOQUANT.	
37/23V	2/75	COUPLE FINALE - JANTE VOIE -	
38/15E	1/77	RAPPORTS	
39/16E	1/77	FREINS	
40/24V	1/77	BARRE ANTI-RAPPROCHEMENT SUSPENSION	Supprimée 1978
41/17E	4/77	CARROSSERIE - MOTEUR	
42/25V	7/77	RAMA TEUR - RESERVOIR - FREIN - COUPLE FINALE	Supprimée 1979
43/18E	4/78	RAPPORTS	
		RESERVOIR - SIEGES - FILTRE A AIR - SUSPENSION - DIRECTION - VOIE	

Autres homologations du modèle

Vérifiée le 21/2/96 par [Signature] visée ce jour le \_\_\_\_\_ par \_\_\_\_\_