



JAPAN AUTOMOBILE FEDERATION

F. I. A. Recognition No. Group 1

5366

FEDERATION INTERNATIONALE DE L'AUTOMOBILE

Form of recognition in accordance with Appendix J to the International Sporting Code.

Manufacturer Toyota Motor Co., Ltd.

Serial No of chassis RT61 - 000001

engine 6R 000061

Recognition is valid from 1 October 1970

The manufacturing of the model described in this recognition form was started on Feb. 1970 and the minimum production of 5000 identical cars, in accordance with the specifications of this form was reached on May 1970

Cylinder-capacity 1707 cm<sup>3</sup> 104.1 cu. in.

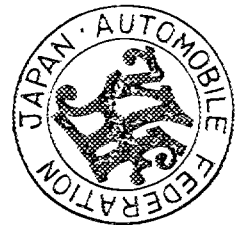
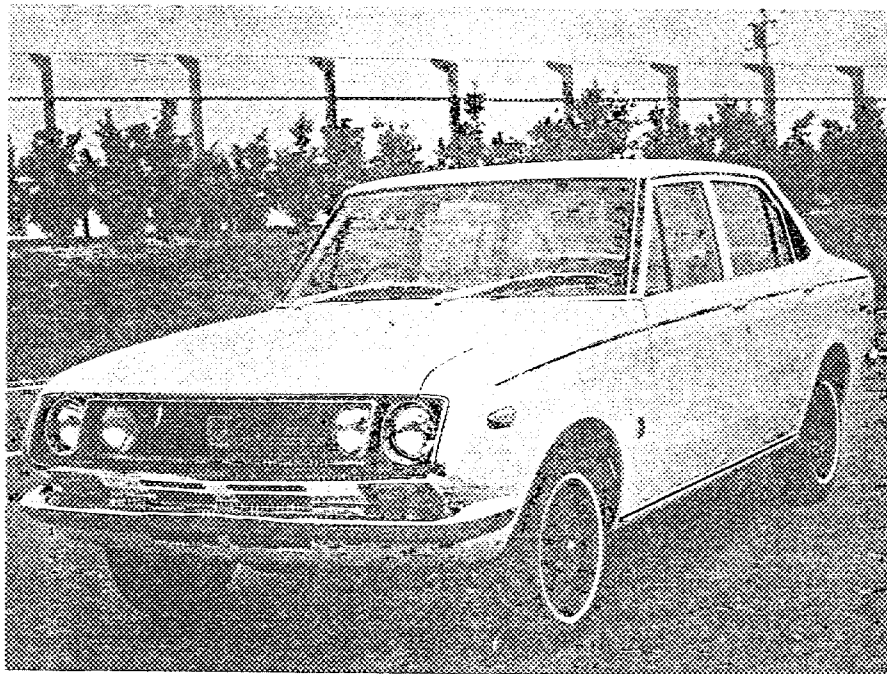
Model Corona Mark II Deluxe RT61-DK

Manufacturer Toyota Motor Co., Ltd.

Manufacturer Toyota Motor Co., Ltd.

List 70/10

Photograph A, 3/4 view of car from front



東京都港区芝公園第三号地一番五  
機械振興会館内  
法人 日本自動車連盟

The vehicle described in this form has been subject to the following amendments :

Variants

on	19	rec. No.	List
on	19	rec. No.	List
on	19	rec. No.	List
on	19	rec. No.	List
on	19	rec. No.	List

Normal evolution of the type

on	19	rec. No.	List
on	19	rec. No.	List
on	19	rec. No.	List
on	19	rec. No.	List
on	19	rec. No.	List

Stamp and signature of the National Sporting Authority

Stamp and signature of the F. I. A.

*[Handwritten signature]*

5566

Make Toyota

Model RT61 - DK

F. I. A. Rec. No.

IMPORTANT - the underlined items must be stated in two measuring systems, one of which must be the metric system. See conversion table hereafter.

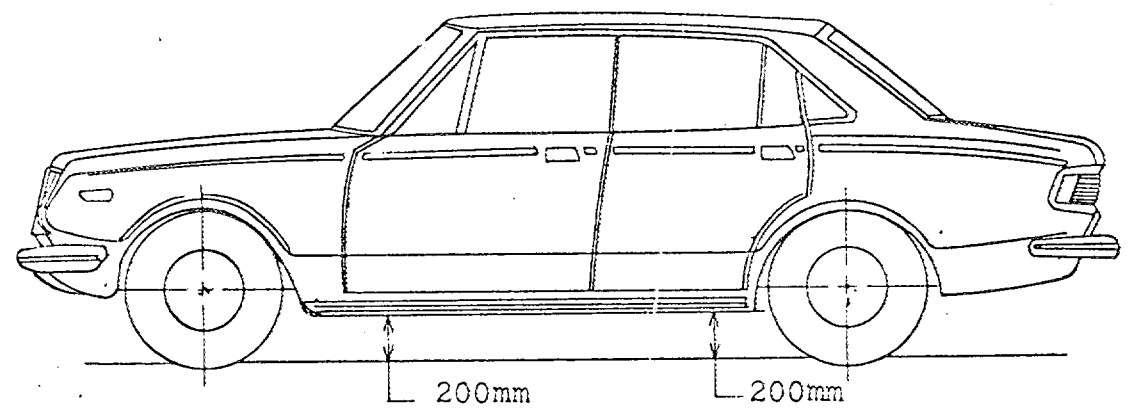
**CAPACITIES AND DIMENSIONS**

1. <u>Wheelbase</u>	2510	mm	98.8	inches
2. <u>Front track</u>	1325	mm	52.2	inches *
3. <u>Rear track</u>	1320	mm	52.0	inches *
4. Overall length of the car		429.5	cm	inches
5. Overall width of the car		160.5	cm	inches
6. Overall height of the car		140.5	cm	inches
7. <u>Capacity of fuel tank</u> (reserve included)			52	ltrs
	13.7	Gallon US		Gallon Imp.
8. Seating capacity	5			
9. <u>Weight</u> , total weight of the car with normal equipment, water, oil and spare wheel but without fuel nor repair tools:				
	930	kg	2045	lbs cwt

\* Differences in track caused by the use of other wheels with different rim widths must be stated when recognition is requested for the wheels concerned.

Specify ground clearance in relation to the track and give drawing of two fixed points of the vehicle's structure at which measurements are taken.

These ground clearance dimensions are only for information when checking the track and can in no way affect the eligibility of the car.



**CONVERSION TABLE**

1 inch / pouce	-- 2.54 cm	1 quart US	-- 0.9464 ltrs
1 foot / pied	-- 30.4794 cm	1 pint (pt)	-- 0.568 ltrs
1 square inch / pouce carre	-- 6.452 cm <sup>2</sup>	1 gallon imp.	-- 4.546 ltrs
1 cubic inch / pouce cube	-- 16.387 cm <sup>3</sup>	1 gallon US	-- 3.785 ltrs
1 pound / livre (lb)	-- 453.593 gr.	1 hundred weight (cwt)	-- 50.802 kg

Make Toyota

Model RT61 - DK

F.I.A. Rec. No. 1

**CHASSIS AND COACHWORK** (Photographs A, B and C)

- 20. Chassis/body construction : ~~separate~~ / unitary construction
- 21. Unitary construction, material (s) Steel  
Separate construction
- 22. Separate Constructions: Material (s) of chassis
- 23. Material (s) of coachwork
- 24. Number of doors 4 Material (s) Steel
- 25. Material (s) of bonnet Steel
- 26. Material (s) of boot lid Steel
- 27. Material (s) of rear-window Glass
- 28. Material (s) of windscreen Glass
- 29. Material (s) of front-door windows Glass
- 30. Material (s) of rear-door windows Glass
- 31. Sliding system of door windows Vertical, manual
- 32. Material (s) of rear-quarter light

**ACCESSORIES AND UPHOLSTERY**

- 38. Interior heating : ~~yes~~ - no
- 39. Air-conditioning : ~~yes~~ - no
- 40. Ventilation : yes - ~~yes~~
- 41. Front seats, type of seats and upholstery Separate, Vinyl leather
- 42. Weight of front seat (s), complete with supports and rails, out of the car :  
17Kg x 2 kg lbs
- 43. Rear seats, type of seats and upholstery Bench, Vinyl leather
- 44. Front bumper, material (s) Steel Weight 5.9 kg lbs
- 45. Rear bumper, material (s) Steel Weight 5.9 kg lbs

**WHEELS**

- 50. Type Pressed Steel
- 51. Weight (per wheel, without tyre) 6 kg lbs
- 52. Method of attachment 4 Nuts
- 53. Rim diameter 330.2 mm 13 inches
- 54. Rim width 114.3 mm 4.5 inches

**STEERING**

- 60. Type Recirculating ball
- 61. Servo-assistance : ~~yes~~ - no
- 62. Number of turns of steering wheel from lock to lock 3 3/4
- 63. In case of servo-assistance

Make Toyota

Model RT61 - DK

F.I.A. Rec. No.

SUSPENSION

- 70. Front suspension (photogr. D), type Independent, Wishbone
- 71. Type of spring Coil
- 72. Stabiliser (if fitted) Torsion bar
- 73. Number of shockabsorbers 2 74. Type Hydraulic telescopic
- 78. Rear suspension (photogr. E), type Rigid
- 79. Type of spring Leaf
- 80. Stabiliser (if fitted)
- 81. Number of shockabsorbers 2 82. Type Hydraulic telescopic

BRAXES (photographs F and G)

- 90. System Hydraulic
- 91. Servo-assistance (if fitted), type Vacuum servo
- 92. Number of hydraulic master cylinders 2

	FRONT		REAR	
93. Number of cylinders per wheel	2		1	
94. Bore of wheel cylinder (s)	48.1 mm	in.	20.64 mm	in.
<b>Drum brakes</b>				
95. Inside diameter	mm	in.	228.6 mm	in.
96. Length of brake linings	mm	in.	243 mm	in.
97. Width of brake linings	mm	in.	40 mm	in.
98. Number of shoes per brake				2
99. Total area per brake	mm <sup>2</sup>	sq. in.	194x10 <sup>2</sup>	mm <sup>2</sup> sq. in.
<b>Disc brakes</b>				
100. Outside diameter	244 mm	in.	mm	in.
101. Thickness of disc	10 mm	in.	mm	in.
102. Length of brake linings	47.5 mm	in.	mm	in.
103. Width of brake linings	60.9 mm	in.	mm	in.
104. Number of pads per brake				2
105. Total area per brake	56 x 10 <sup>2</sup> mm <sup>2</sup>	sq. in.	mm <sup>2</sup>	sq. in.

3 2 5 8

Make Toyota

Model RT61 - DK

F. I. A. Rec. No.

ENGINE (photographs J and K)

130. Cycle	4	131. Number of cylinders	4
132. Cylinder arrangement	In line		
133. Bore	86 mm	134. Stroke	73.5 mm
	3.38 in.		2.89 in.
135. Capacity per cylinder	426.8 cm <sup>3</sup>		26.0 cu. in.
136. Total cylinder capacity	1707 cm <sup>3</sup>		104.1 cu. in.
137. Material (s) of cylinder block	Cast iron		
138. Material (s) of sleeves (if fitted)			
139. Cylinder-head, material (s)	Cast iron	Number fitted	1
140. Number of inlet ports	4	141. Number of exhaust ports	4
142. Compression ratio	8.5		
143. Volume of one combustion chamber	56.9 cm <sup>3</sup>		cu. in.
144. Piston, material	Aluminum - Alloy	145. Number of rings	3
146. Distance from gudgeon pin centre line to highest point of piston crown	39.8 mm		inches
147. Crankshaft : moulded / <del>XXXX</del>		148. Type of crankshaft :	integral / XXXX
149. Number of crankshaft main bearings	5		
150. Material of bearing cap	Cast iron		
151. System of lubrication : <del>XXXX</del> / oil in sump			
152. Capacity, lubricant	4.1 ltrs		pts
			quarts US
153. Oil cooler : <del>yes</del> / no		154. Method of engine cooling	Water
155. Capacity of cooling system	7.4 ltrs		pts
			quarts US
156. Cooling fan (if fitted), dia.	36 cm		inches
157. Number of blades of cooling fan	4		

Bearings

158. Crankshaft main, type	Plain	Dia.	60 mm	in.
159. Connecting rod big end,	Plain	Dia.	53 mm	in.

Weights

160. Flywheel (clean)	10.6 kg	lbs	
161. Flywheel with clutch (all turning parts)	16.6 kg	lbs	
162. Crankshaft	14.6 kg	lbs	163. Connecting rod
			0.76 kg
164. Piston with rings and pin	0.55 kg	lbs	

Make Toyota

Model RT61 - DK

F.I.A. Rec. No.

FOUR STROKE ENGINES

- 170. Number of camshafts 1 171. Location Cylinder head
- 172. Type of camshaft drive Chain
- 173. Type of valve operation Rocker

INLET (see page 8) \*

- 180. Material(s) of inlet manifold Aluminum - Alloy
- 181. Diameter of valves 43 mm 1.69 inches
- 182. Max. valve lift 10 mm 0.39 in. 183. Number of valve springs 2
- 184. Type of spring Coil 185. Numbr of valves per cylinder 1
- 186. Tappet clearance for checking timing (cold) 0.18 mm inches
- 187. Valves open at (with tolerance for tappet clearance indicated) B. T. D. C.  $15^{\circ} \pm 7^{\circ}$
- 188. Valves close at (with tolerance for tappet clearance indicated) A. B. D. C.  $45^{\circ} \pm 7^{\circ}$
- 189. Air filter, type Dry

EXHAUST (see page 8)

- 195. Material (s) of exhaust manifold Cast iron
- 196. Diameter of valves 34 mm 1.34 inches
- 197. Max. valve lift 10 mm 0.39 in. 198. Number of valve springs 2
- 199. Type of spring Coil 200. Number of valves per cylinder 1
- 201. Tappet clearance for checking timing (cold) 0.33 mm inches
- 202. Valves open at (with tolerance for tappet clearance indicated) B. B. D. C.  $50^{\circ} \pm 7^{\circ}$
- 203. Valves close at (with tolerance for tappet clearance indicated) A. T. D. C.  $10^{\circ} \pm 7^{\circ}$

CARBURETION (photograph N)

- 210. Number of carburetors fitted 1 211. Type Down draught
- 212. Make Aisan 213. Model 6R
- 214. Number of mixture passages per carburetor 2
- 215. Flange hole diameter of exit port(s) of carburettor  $30^{\phi}$  &  $34^{\phi}$  mm in.
- 216. Minimum dimensions of mixture pasage (s) ~~XXXXXXXXXXXXXXXXXXXXXXXXXXXX~~  
 $23^{\phi}$  &  $28^{\phi}$  mm inches

INJECTION (if fitted)

- 220. Make of pump 221. Number of plungers
- 222. Model or type of pump 223. Total number of injectors
- 224. Location of injectors
- 225. Minimum diameter of inlet pipe mm inches

\* ) for additional information concerning two-stroke engines and super-charged engines see page 13.

Make Toyota

Model RT61 - DK

F.I.A. Rec. No.

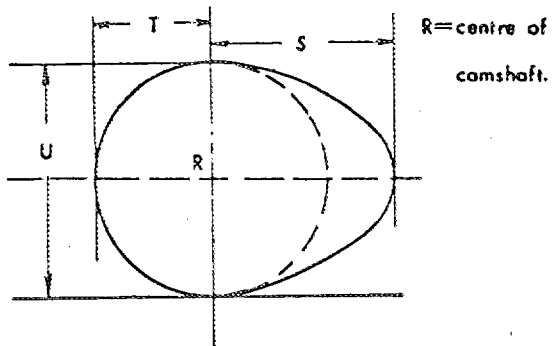
ENGINE ACCESSORIES

- |   |                          |                                      |                      |   |
|---|--------------------------|--------------------------------------|----------------------|---|
| 230. Fuel pump : mechanical <del>XXXXXX</del>                   | 231. No. fitted          | 1                                    |                      |   |
| 232. Type of ignition system Make & break                       | 233. No. of distributors | 1                                    |                      |   |
| 234. No. of ignition coils                                      | 1                        | 235. No. of spark plugs per cylinder | 1                    |   |
| 236. Generator, type: <del>XXXX</del> /alternator-number fitted | 1                        | 237. Method of drive                 | V belt               |   |
| 238. Voltage of generator                                       | 12                       | volts                                | 239. Battery, number | 1 |
| 240. Location   | Engine room              |                                      |                      |   |
| 241. Voltage of battery   | 12                       | volts                                |                      |   |

ENGINE AND CAR PERFORMANCES (as declared by manufacturer in catalogue)

- |                               |          |                            |        |      |              |
|-------------------------------|----------|----------------------------|--------|------|--------------|
| 250. Max. engine output       | 95ps     | (type of horsepower: JIS ) | at     | 5500 | rpm          |
| 251. Maximum rpm              | 6400rpm  | output at that figure      | 89.5ps |      |              |
| 252. Maximum torque           | 14.0Kg-m | at                         | 3800   | rpm  |              |
| 253. Maximum speed of the car | 155      | km/hour                    |        |      | miles / hour |

255.



R=centre of camshaft.

Inlet cam

S =	26.1	mm	1.023	inches
T =	18.0	mm	0.709	inches
U =	36.0	mm	1.417	inches

Exhaust cam

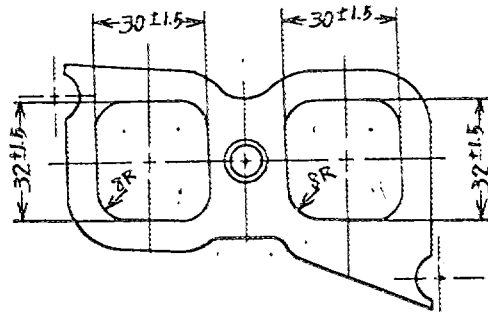
S =	26.2	mm	1.032	inches
T =	18.0	mm	0.709	inches
U =	36.1	mm	1.421	inches

Make Toyota

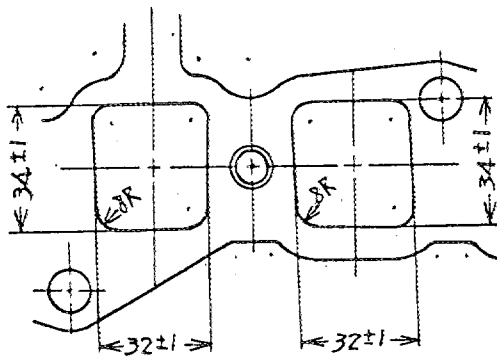
Model RT61-DK

F. I. A. Rec. No.

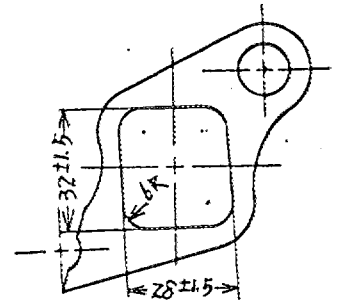
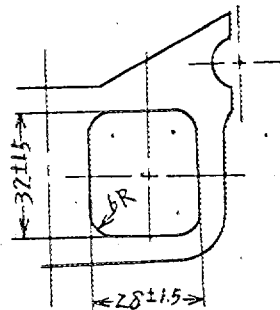
Drawing inlet manifold ports, side of cylinder-head. Indicate scale or dimensions and manufacturing tolerance.



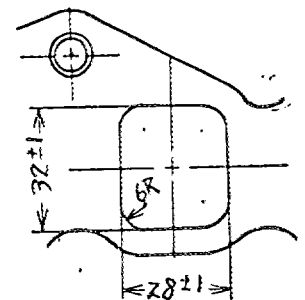
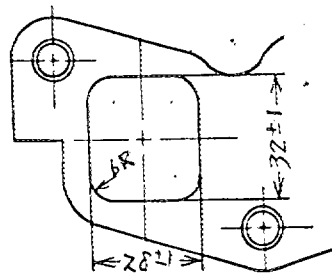
Drawing of entrance to inlet part of cylinder-head. Indicate scale or dimensions and manufacturing tolerance.



Drawing exhaust manifold ports, side of cylinder-head. Indicate scale or dimensions and manufacturing tolerance.



Drawing of exit to exhaust part of cylinderhead. Indicate scale or dimensions and manufacturing tolerance.



Unit ; mm



Make Toyota

Model, RT61 - DK

F. I. A. Rec. No.

**DRIVE TRAIN**

**CLUTCH**

- 260. Type of clutch Dry single plate
- 261. No. of plates 1
- 262. Dia. of clutch plates 20.5 cm inches
- 263. Dia. of linings, inside 14.0 cm in. outside 20.0 cm in.
- 264. Method of operating clutch Hydraulic

**GEAR BOX** (photograph H)

- 270. Manual type, make Toyota Method of operation Mechanical
- 271. No. of gear-box ratios forward 4
- 272. Synchronized forward ratios 1, 2, 3 & 4
- 273. Location of gear-shift Floor
- 274. Automatic, make type
- 275. No. of forward ratios
- 276. Location of gear-shift

277.	Manual		Automatic		Alternative manual		<del>Ratio</del>	
	Ratio	No. teeth	Ratio	No. teeth	Ratio	No. teeth	Ratio	No. teeth
1	3.673	$\frac{31}{18} \times \frac{32}{15}$			3.337	$\frac{31}{18} \times \frac{31}{16}$		
2	2.114	$\frac{31}{18} \times \frac{27}{22}$			1.948	$\frac{31}{18} \times \frac{26}{23}$		
3	1.403	$\frac{31}{18} \times \frac{22}{27}$			1.340	$\frac{31}{18} \times \frac{21}{27}$		
4	1.000				1.000			
5								
6								
reverse	4.183	$\frac{31}{18} \times \frac{22}{14} \times \frac{34}{22}$			4.183	$\frac{31}{18} \times \frac{22}{14} \times \frac{34}{22}$		

- 278. Overdrive, type
- 279. Forward gears on which overdrive can be selected
- 280. Overdrive ratio

**FINAL DRIVE**

- 290. Type of final drive Hypoid gear
- 291. Type of differential Bevel gear
- 292. Type of limited slip differential (if fitted)
- 293. Final drive ratio 4.111, 4.375
- Number of teeth  $\frac{37}{9}$ ,  $\frac{35}{8}$

Make Toyota

Model RT61 - DK

F.I.A. Rec. No.

IMPORTANT. The conformity of the car with the following items of the present recognition form is to be disregarded during the scrutineering, when the vehicle has been entered in group 2 (Touring cars) or 3 (Grand Touring cars) : 41, 72, 80, 91, 142, 143, 144, 145, 146, 153, 156, 157, 160, 161, 162, 163, 164, 182, 184, 186, 187, 188, 189, 199, 201, 202, 203, 212, 213, 215, 216, 222, 225, 230, 250, 251, 252, 253, and photographs I, M, N, and page 8

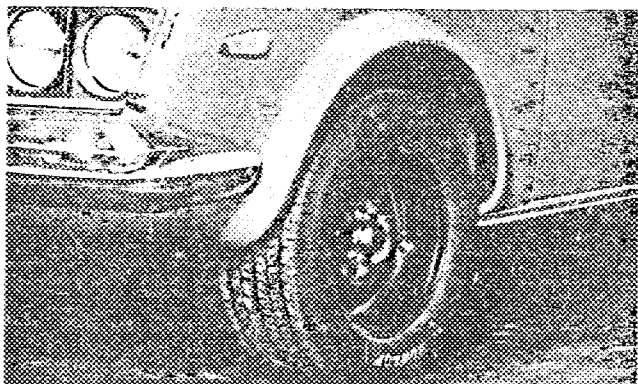
During the scrutineering of cars entered in group 4 (Sportscars) only the following items of the present recognition form are to be taken into consideration : 1, 2, 3, 9, 20, 21, 22, 23, 24, 25, 26, 70, 71, 78, 79, 90, 130, 131, 132, 133, 134, 135, 136, 137, 138, 139, 140, 141, 147, 148, 149, 150, 158, 159, 170, 171, 172, 173, 185, 200, 270, 271, 274, 275, 290, 291, 292 and photographs A, B, D, E, F, G, H, J, K, and O.

Optional equipment affecting preceding information. This to be stated together with reference number.

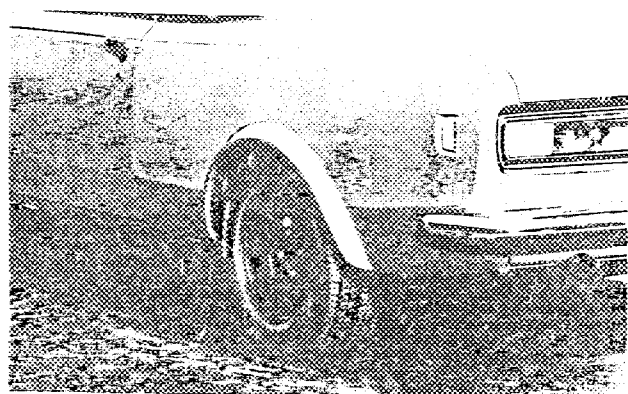
NOT VALID FOR GROUP 1 ONLY

Wing extensions

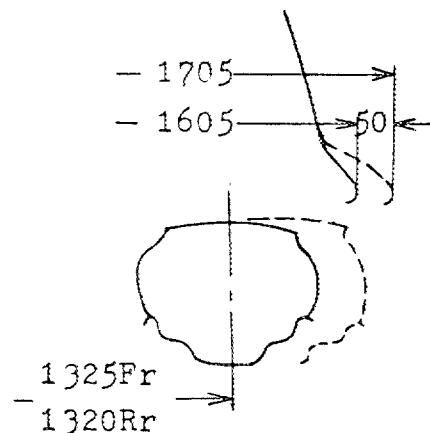
GR II



Front



Rear



Center of original rim

Unit : mm

Make Toyota

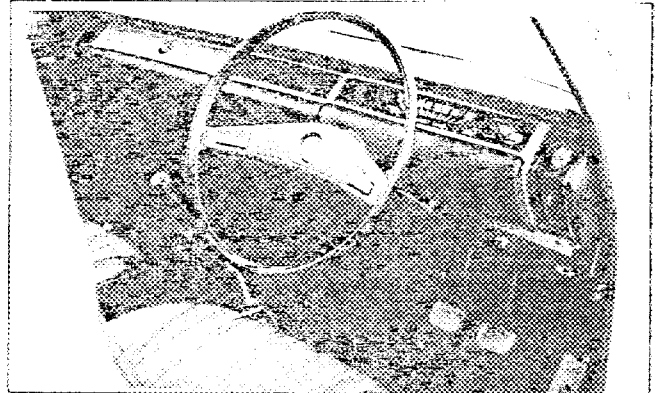
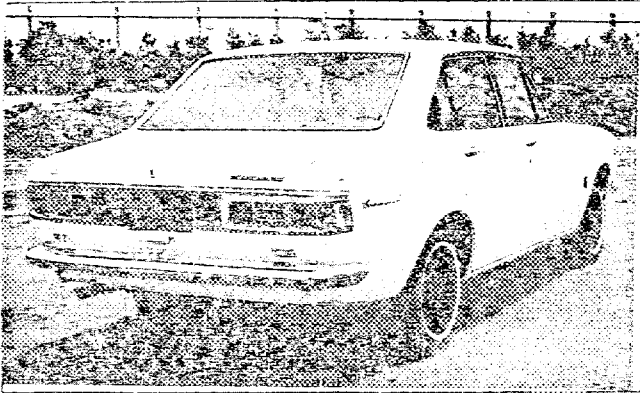
Model RT61 - DK

F.I.A. Rec. No

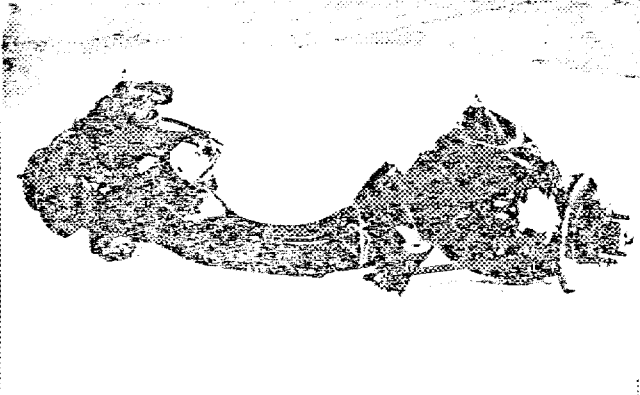
Photograph

Interior view of car through driver's door (open or removed) with dashboard

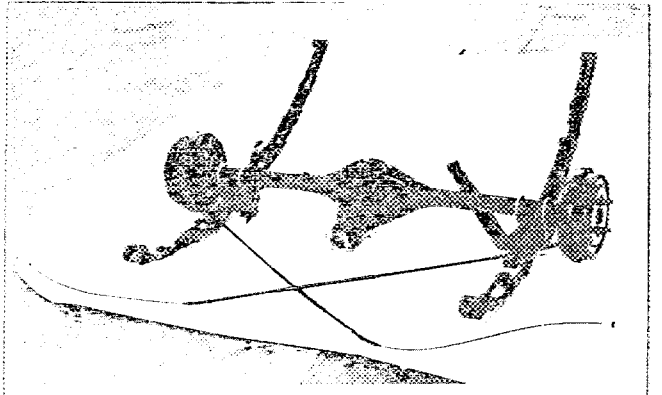
B. 3/4 view of car from rear



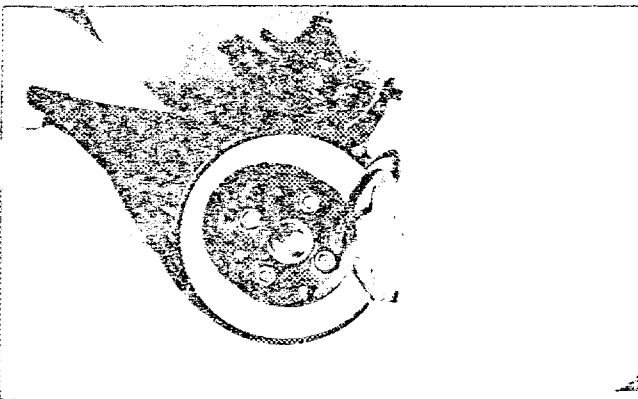
D. front axle complete, removed from car. Without wheels



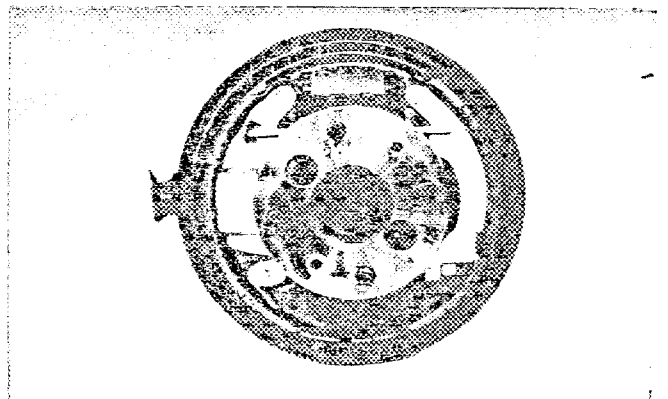
E. Rear axle complete without wheels, removed from car.



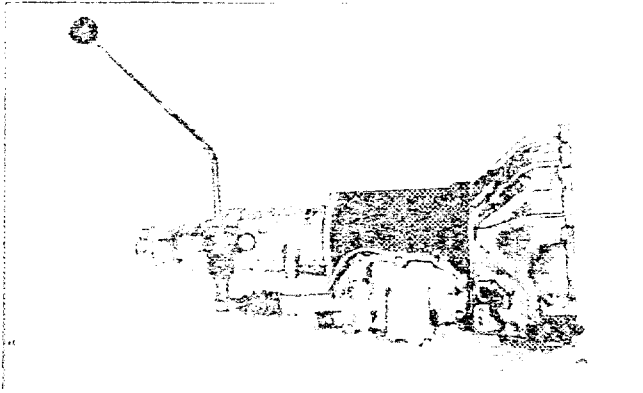
F. front brake, drum removed or disc with calipers



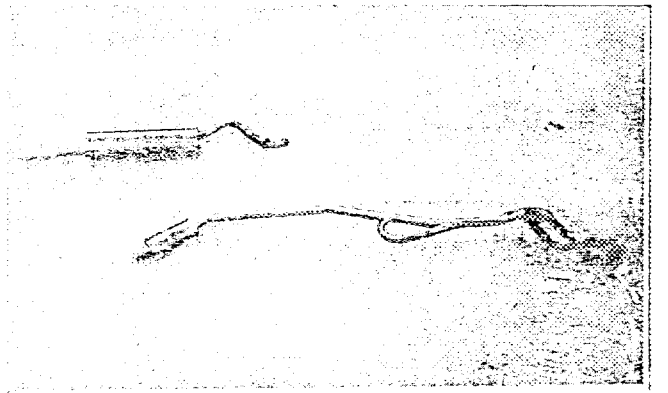
G. rear brake, drum removed or disc with calipers



H. gearbox, view from side



I. silencer & exhaust pipes after exhaust manifold



Make Toyota

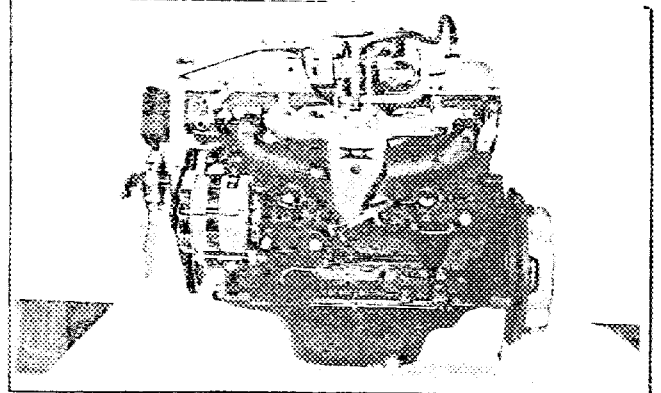
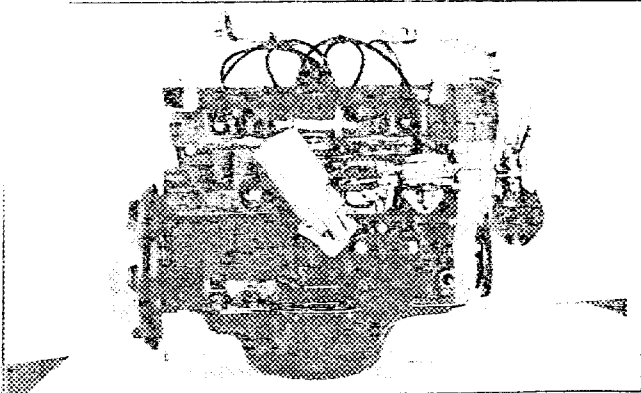
Model RT61 - DK

F.I.A. Rec. No

Photograph

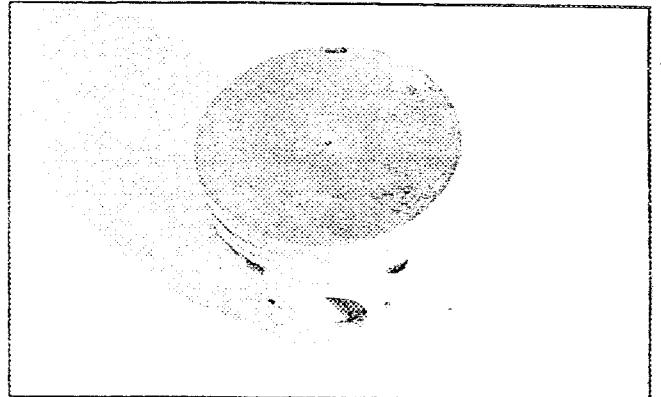
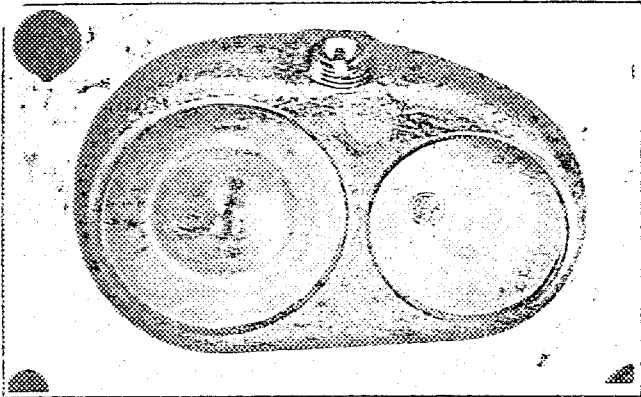
engine unit out of car, from right. With clutch and accessories but without air filter nor gear-box.

Engine unit out of car, from left. With clutch and accessories but without gear-box nor air filter.



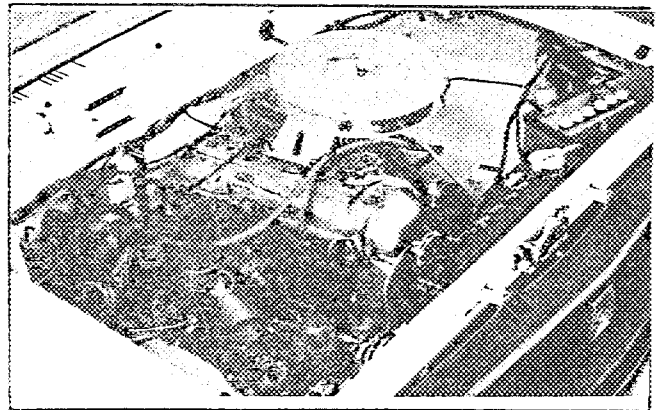
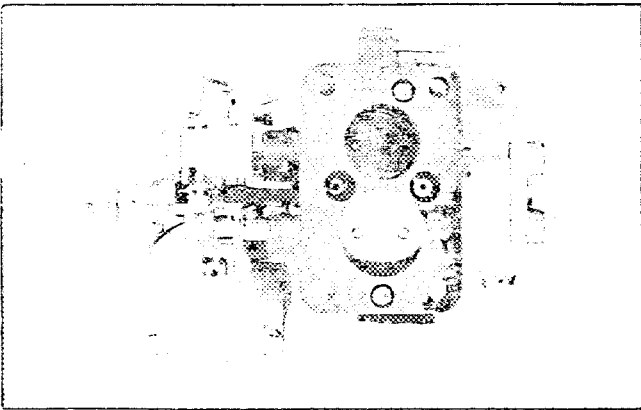
L, combustion chamber

M, piston crown



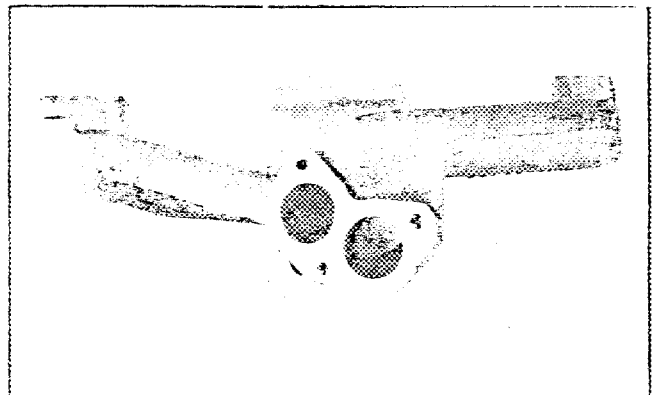
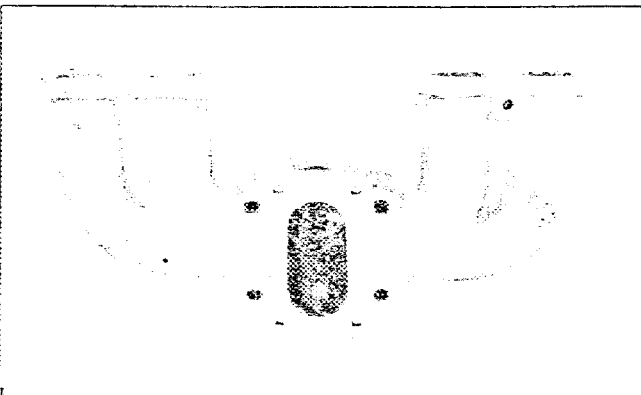
N, Carburettor (view from side of manifold)

O, engine in car with all accessories, bonnet open or removed.



P, inlet manifold

Q, exhaust manifold



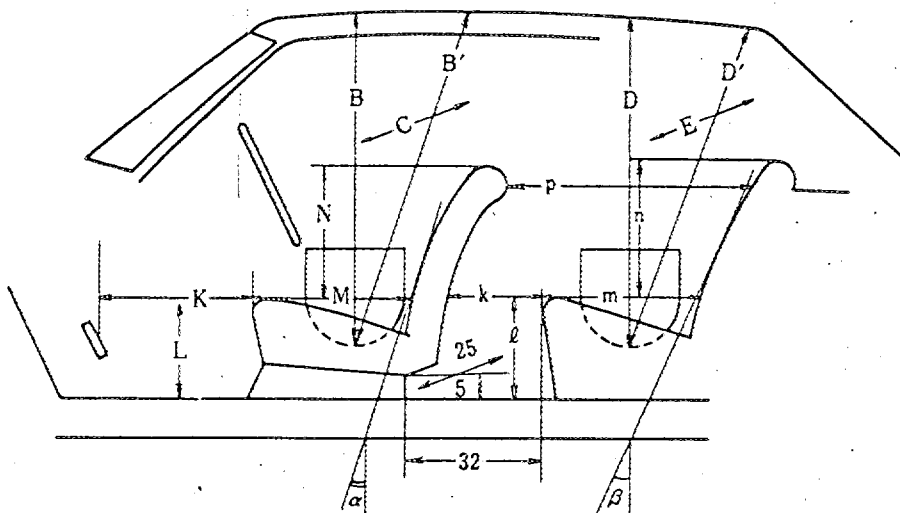
Make Toyota

Model RT61 - DK

F.I.A. Rec. No.

**DIMENSIONS OF INTERIOR**  
(Conform to Art. 253 b of Appendix J)

For four seaters:



Minimum Dimensions (cm)							
B	B'	$\alpha$	C	D	D'	$\beta$	E
90	98	23°	133.5	93	94	23°	133

Minimum Dimensions (cm)										
L	$\ell$	M	m	N	n	k+m	p	k	k+ $\ell$ +m	K+L+M
31	33.7	50	47.3	45.5	42	77.3	77	30	111	120.5
0.9L = 27.9		0.85M = 42.5		0.8N = 36.4		0.8(k+m) = 61.84 (15)			(95)	(120)

Make Toyota

Model RT61 - DK

F.I.A. Rec. No.

TWO STROKE ENGINES

300. System of cylinder scavenging

301. Type of lubrication

302. Inlet ports, length measured around cylinder wall

mm

inches

303. Height inlet port mm

in. 304. Area

mm<sup>2</sup>

sq. in.

305. Exhaust ports, length measured around cylinder wall

mm

inches

306. Height exhaust port mm

in. 307. Area

mm<sup>2</sup>

sq. in.

308. Transfer port, length measured around cylinder wall

mm

inches

309. Height transfer port mm

in. 310. Area

mm<sup>2</sup>

sq. in.

311. Piston ports, length measured around piston

mm

inches

312. Height piston port mm

in. 313. Area

mm<sup>2</sup>

sq. in.

314. Method of precompression

315. Precompression cyl.: yes/no

316. Bore mm inches

317. Stroke

mm

inches

318. Distance from top of cyl. block to highest point of exhaust port :

mm

inches

319. Distance from top of cyl. block to lowest point of inlet port :

mm

inches

320. Distance from top of cyl. block to highest point of transfer port :

mm

inches

321. Drawing of cylinder ports.

330. Supercharging—state full details hereafter :

JAPAN AUTOMOBILE FEDERATION



Yasuharu Nanba



JAPAN AUTOMOBILE FEDERATION F.I.A. Homel. No

5366

1/15

FEDERATION INTERNATIONALE DE L'AUTOMOBILE

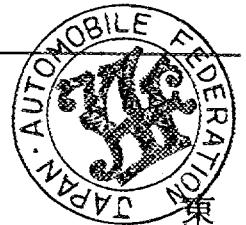
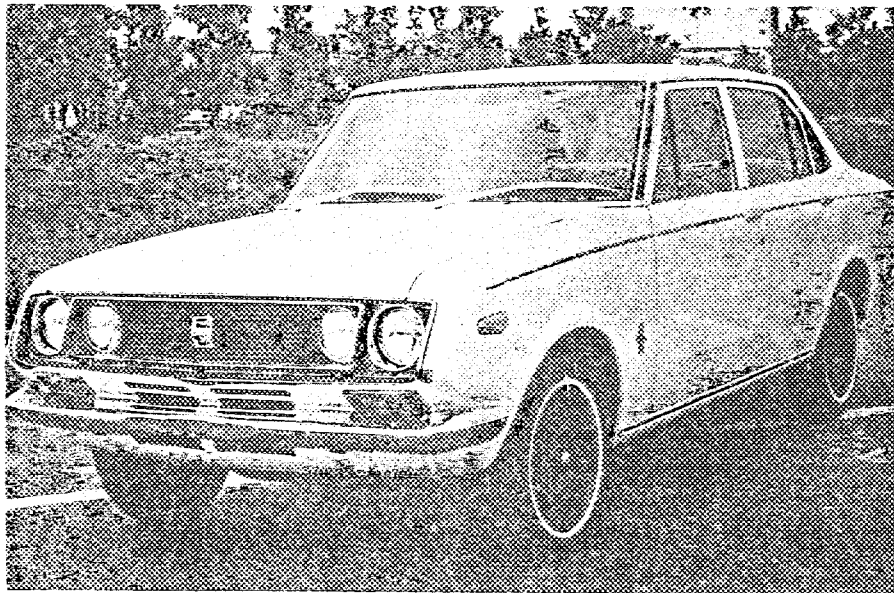
Amendment to Form of Recognition in accordance with the International Sporting Code.

Original F.I.A. Recog. No

Make Toyota Motor Co., Ltd. Model Toyota Corona Mark II. chassis RT61-000001 engine 6R 000001 Deluxe RT61-DK. Application of this amendment started the 1st February, 1970. Commercial denomination after application of modifications: Toyota Corona Mark II SL. RT61-S. The modifications are to be considered as: Variant / ~~XXXXXX~~. Date amendment is valid from 1/10/70 list 70 No.

Description of amendment

Photograph A, 3/4 view of car from front



東京都港区芝公園第三号地一番五  
機械振興会館内  
法人 日本自動車連盟

Further detailed specifications are described on the attached sheets.

Stamp and signature of National Sporting Authority

Stamp and signature of F.I.A.

JAPAN AUTOMOBILE FEDERATION

Handwritten signature of Yasuharu Nanba

Yasuharu Nanba

Handwritten signature of F.I.A.

Make Toyota

Model RT61 - S

5366  
1/15

ENGINE (photographs J and K )

142. Compression ratio 9.5  
143. Volume of one combustion chamber 50.3 cm<sup>3</sup>

INLET (seepage 2 )

186. Tappet clearance for checking timing (cold ) 0.15 mm

EXHAUST (seepage 2 )

201. Tappet clearance for checking timing (cold ) 0.30 mm

CARBURETION (photograph N )

210. Number of carburettors fitted 2  
211. Type side draught (su)  
212. Make Aisan  
213. Model 6R - B  
214. Number of mixture passages per carburettor 1  
215. Flange hole diameter of exit port(s) of carburettor 44mm  
216. Minimum dimensions of mixture pasage(s) with piston at max.  
hight (example : SU ) 32mm

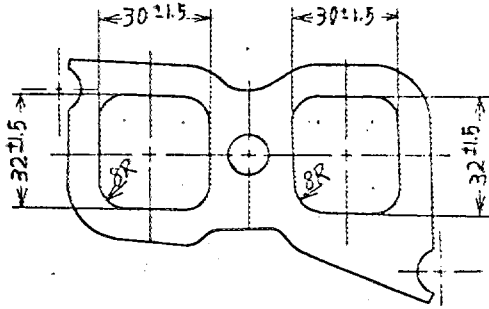
ENGINE AND CAR PERFORMANCES(as declared by manufacturer in catalogue)

250. Maximum engine output 105ps(type of horsepower : JIS) at 6000rpm  
251. Maximum rpm 6500 output at that figure 98ps  
252. Maximum torque 14.5Kg-m at 4000rpm  
253. Maximum speed of the car 170Km/hour

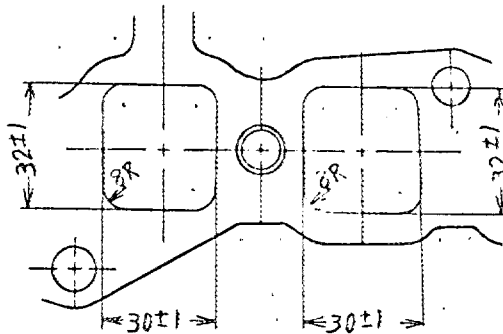


1115

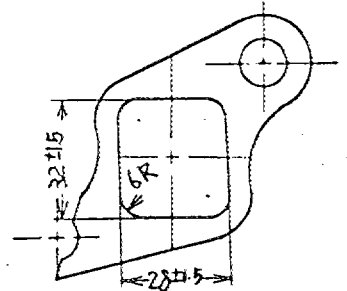
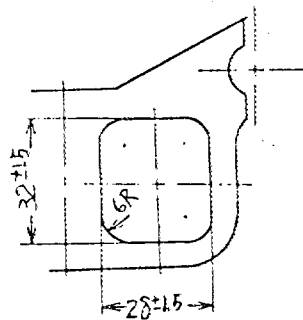
Drawing inlet manifold ports, side of cylinder-head. Indicate scale or dimensions and manufacturing tolerance.



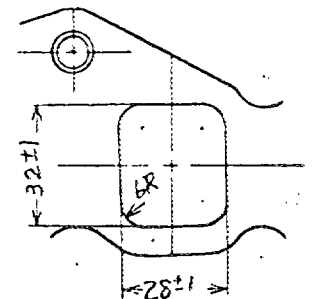
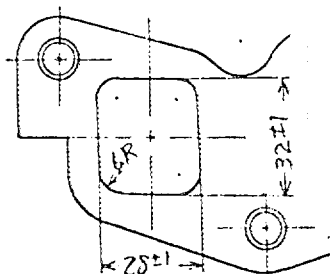
Drawing of entrance to inlet port of cylinder-head. Indicate scale or dimensions and manufacturing tolerance.



Drawing exhaust manifold ports, side of cylinder-head. Indicate scale or dimensions and manufacturing tolerance.



Drawing of exit to exhaust port of cylinderhead. Indicate scale or dimensions and manufacturing tolerance.



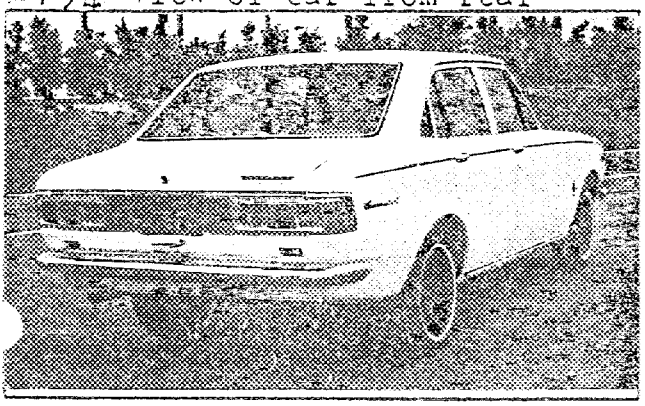
5366  
1/15

Make Toyota

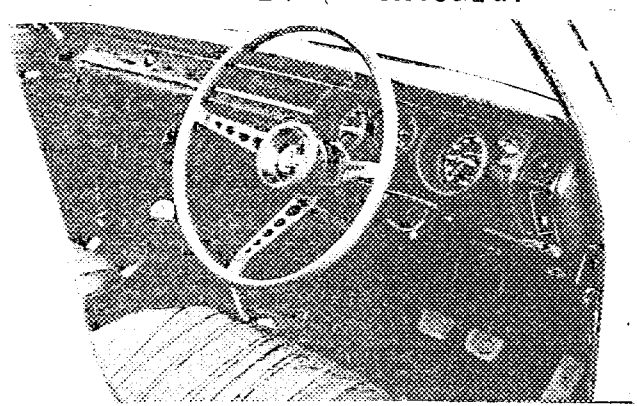
Model RP61-S

Photograph

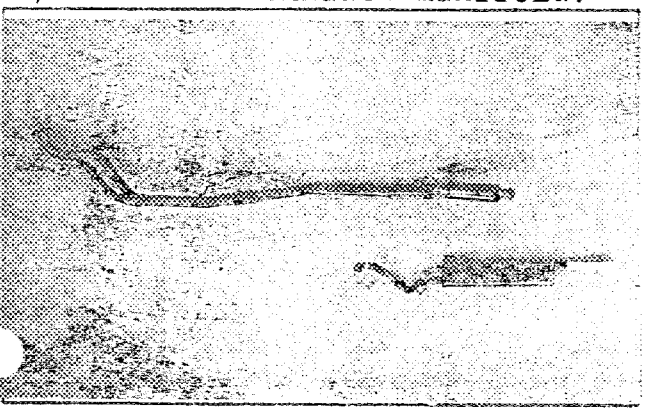
B, 3/4 View of car from rear



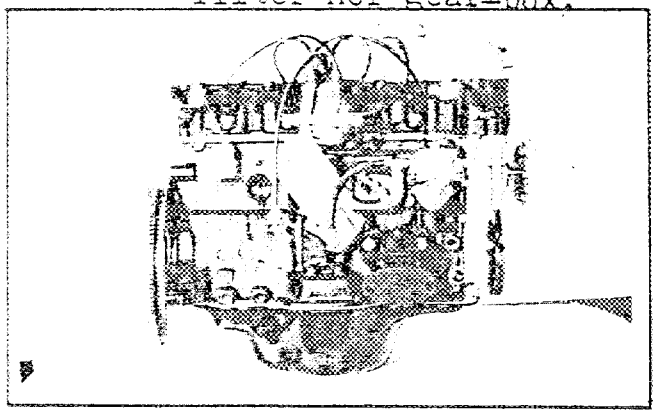
interior view of car through driver's door (open or removed) with dashboard.



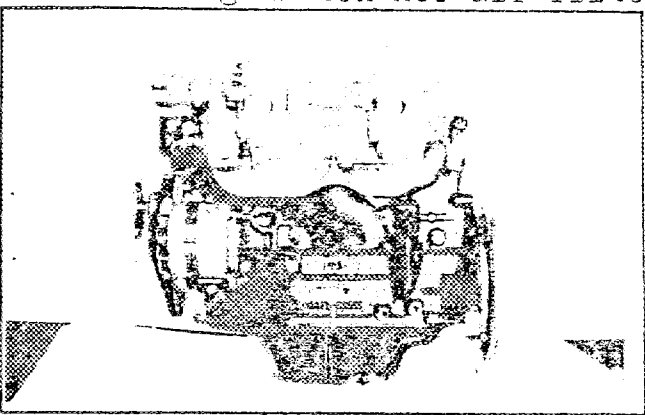
I, silencer + exhaust pipes after exhaust manifold.



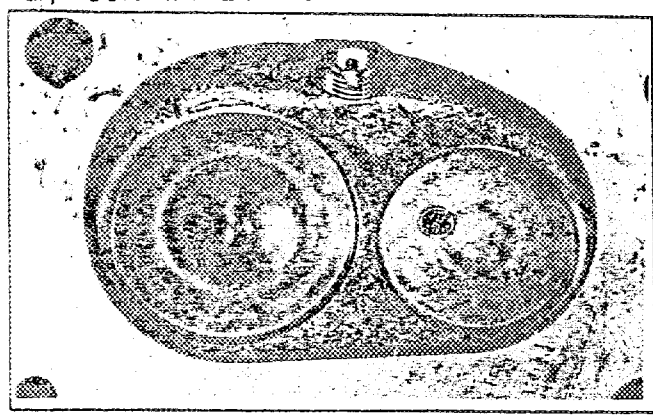
J, engine unit out of car, from right. With clutch and accessories but without air filter nor gear-box.



K, engine unit out of car, from left. With clutch and accessories but without gear-box nor air filter.



L, combustion chamber



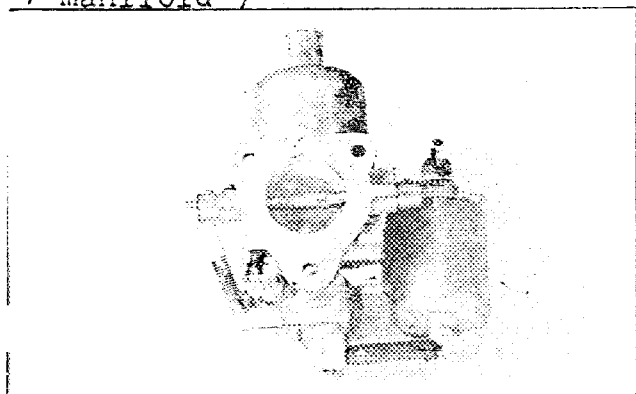
Make Toyota

Model RT61 - S

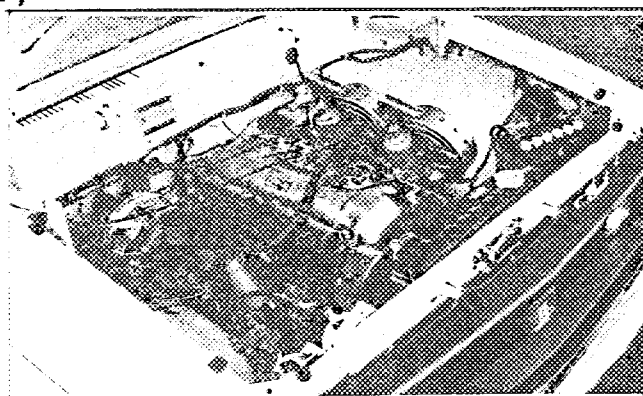
5366  
1/11/5

Photograph

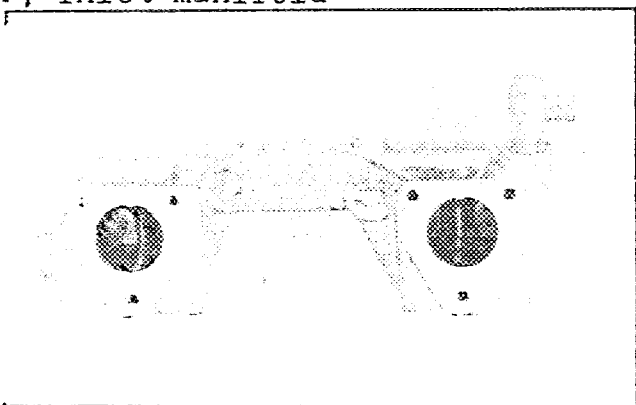
Carburettor (view from side of N, manifold)



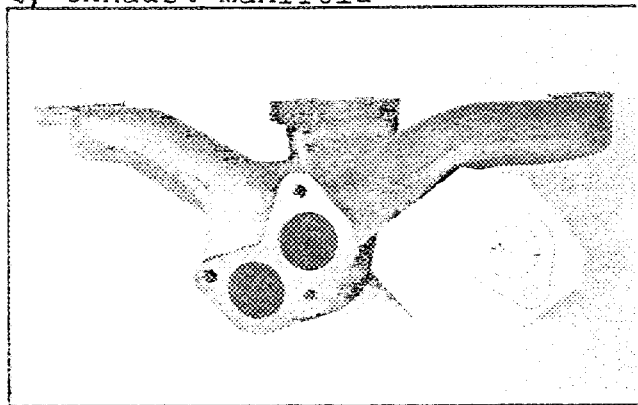
0, engine in car with all accessories, bonnet open or removed.



P, inlet manifold



Q, exhaust manifold



東京都港区芝公園第三号地一番五  
機械振興会館内  
法人 日本自動車連盟

