



JAPAN AUTOMOBILE FEDERATION

F. I. A. Recognition No.

5356

Group

1

FEDERATION INTERNATIONALE DE L'AUTOMOBILE

Form of recognition in accordance with
Appendix J to the International Sporting Code.

Manufacturer NISSAN MOTOR CO., LTD.

Serial No. of chassis B110 - 000001

engine A12 - 000001

Recognition is valid from 1/7/70

Cylinder-capacity 1,171 cm³ 71.46 cu. in.

Model DATSUN SUNNY 1200 B110

Manufacturer NISSAN

Manufacturer NISSAN

List 70/17

The manufacturing of the model described in this recognition form was started on Nov. 19 69 and the minimum production of 5,000 identical cars, in accordance with the specifications of this form was reached on Feb. 19 70

Photograph A, 3/4 view of car from front



The vehicle described in this form has been subject to the following amendments :

Variants

on	19	rec. No.	List
on	19	rec. No.	List
on	19	rec. No.	List
on	19	rec. No.	List
on	19	rec. No.	List

Stamp and signature of the
National Sporting Authority

Normal evolution of the type

on	19	rec. No.	List
on	19	rec. No.	List
on	19	rec. No.	List
on	19	rec. No.	List
on	19	rec. No.	List

Stamp and signature of the F. I. A.

Make **NISSAN**

Model **B110**

F. I. A. Rec. No.

IMPORTANT - the underlined items must be stated in two measuring systems, one of which must be the metric system. See conversion table hereafter.

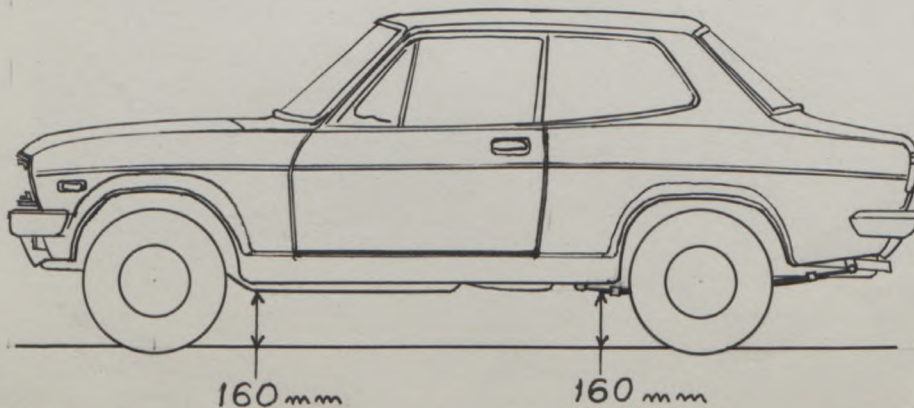
CAPACITIES AND DIMENSIONS

1. <u>Wheelbase</u>	2,300	mm	90.55	inches
2. <u>Front track</u>	1,240	mm	48.82	inches *
3. <u>Rear track</u>	1,245	mm	49.02	inches *
4. Overall length of the car		383.0	cm	inches
5. Overall width of the car		149.5	cm	inches
6. Overall height of the car		139.0	cm	inches
7. <u>Capacity of fuel tank</u> (reserve included)				40 1 lrs
	10.6	Gallon US		Gallon Imp.
8. Seating capacity				
9. <u>Weight</u> , total weight of the car with normal equipment, water, oil and spare wheel but without fuel nor repair tools:				
	710 635	kg = 710	1,399	lbs : 1576
				cwt

* Differences in track caused by the use of other wheels with different rim widths must be stated when recognition is requested for the wheels concerned.

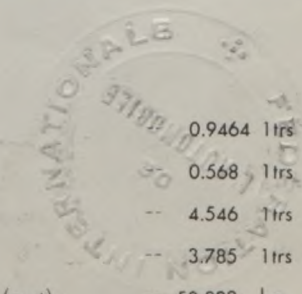
Specify ground clearance in relation to the track and give drawing of two fixed points of the vehicle's structure at which measurements are taken.

These ground clearance dimensions are only for information when checking the track and can in no way affect the eligibility of the car.



CONVERSION TABLE

1 inch / pouce	--	2.54 cm	1 quart US	0.9464 ltrs
1 foot / pied	--	30.4794 cm	1 pint (pt)	0.568 ltrs
1 square inch / pouce carré	--	6.452 cm ²	1 gallon Imp.	-- 4.546 ltrs
1 cubic inch / pouce cube	--	16.387 cm ³	1 gallon US	-- 3.785 ltrs
1 pound / livre (lb)	--	453.593 gr.	1 hundred weight (cwt)	-- 50.802 kg



CHASSIS AND COACHWORK (Photographs A, B and C)

- 20. Chassis / body construction : ~~separate~~ / unitary construction
- 21. Unitary construction, material (s) **Steel**
Separate construction
- 22. Separate Constructions: Material(s) of chassis
- 23. Material (s) of coachwork
- 24. Number of doors **2** Material (s) **Steel**
- 25. Material (s) of bonnet **Steel**
- 26. Material (s) of boot lid **Steel**
- 27. Material (s) of rear-window **Glass**
- 28. Material (s) of windscreen **Glass**
- 29. Material (s) of front-door windows **Glass**
- 30. Material (s) of rear-door windows
- 31. Sliding system of door windows **Vertical, Manual**
- 32. Material (s) of rear-quarter light **Glass**

ACCESSORIES AND UPHOLSTERY

- 38. Interior heating : ~~YES~~ - no
- 39. Air-conditioning : ~~YES~~ - no
- 40. Ventilation : yes - ~~NO~~
- 41. Front seats, type of seats and upholstery **Separate, Vinyl**
- 42. Weight of front seat (s), complete with supports and rails, out of the car :

10 x 2	kg	lbs
--------	----	-----
- 43. Rear seats, type of seats and upholstery **Bentch, Vinyl**
- 44. Front bumper, material (s) **Steel** Weight **3.0** kg lbs
- 45. Rear bumper, material (s) **Steel** Weight **3.7** kg lbs

WHEELS

- 50. Type **Pressed steel**
- 51. Weight (per wheel, without tyre) **4.2** kg lbs
- 52. Method of attachment **Wheel nuts (4 nuts)**
- 53. Rim diameter **305** mm **12** inches
- 54. Rim width **102** mm **4** inches

STEERING

- 60. Type **Recirculating ball**
- 61. Servo-assistance : ~~YES~~ - no
- 62. Number of turns of steering wheel from lock to lock **3.3**
- 63. In case of servo-assistance



Make NISSAN

Model B110

F. I. A. Rec. No.

SUSPENSION

- 70. Front suspension (photogr. D), type Independent (Mcpharson)
- 71. Type of spring Coil
- 72. Stabiliser (if fitted) Torsion bar
- 73. Number of shockabsorbers 2 74. Type Hydraulic telescopic
- 78. Rear suspension (photogr. E), type Rigid
- 79. Type of spring Leaf
- 80. Stabiliser (if fitted)
- 81. Number of shockabsorbers 2 82. Type Hydraulic telescopic

BRAKES (photographs F and G)

- 90. System Hydraulic
- 91. Servo-assistance (if fitted), type
- 92. Number of hydraulic master cylinders 2

		FRONT		REAR	
93. Number of cylinders per wheel		1		1	
94. Bore of wheel cylinder (s)		mm	in.	20.6	mm in.
Drum brakes					
95. Inside diameter		mm	in.	203.2	mm in.
96. Length of brake linings		mm	in.	195	mm in.
97. Width of brake linings		mm	in.	35	mm in.
98. Number of shoes per brake				2	
99. Total area per brake		mm ²	sq. in.	13,650	mm ² sq. in.
Disc brakes					
100. Outside diameter	121.5	mm	in.		mm in.
101. Thickness of disc	9.5	mm	in.		mm in.
102. Length of brake linings	53	mm	in.		mm in.
103. Width of brake linings	42.5	mm	in.		mm in.
104. Number of pads per brake.				2	
105. Total area per brake	4,505	mm ²	sq. in.		mm ² sq. in.



Make NISSAN

Model B110

F. I. A. Rec. No.

ENGINE (photographs J and K)

- 130. Cycle 4
- 131. Number of cylinders 4
- 132. Cylinder arrangement In line
- 133. Bore 73 mm 2.87 in. 134. Stroke 70 mm 2.76 in.
- 135. Capacity per cylinder 292.8 cm³ 17.87 cu. in.
- 136. Total cylinder-capacity 1,171 cm³ 71.46 cu. in.
- 137. Material (s) of cylinder block Cast-Iron
- 138. Material (s) of sleeves (if fitted)
- 139. Cylinder-head, material (s) Al-Cast Number fitted 1
- 140. Number of inlet ports 4
- 141. Number of exhaust ports 4
- 142. Compression ratio 9
- 143. Volume of one combustion chamber 36.6 cm³ cu. in.
- 144. Piston, material Al-Cast 145. Number of rings 3
- 146. Distance from gudgeon pin centre line to highest point of piston crown
32.5 mm inches
- 147. Crankshaft : ~~xxxxx~~ / stamped
- 148. Type of crankshaft : integral / ~~xxxxx~~
- 149. Number of crankshaft main bearings 5
- 150. Material of bearing cap Cast-Iron
- 151. System of lubrication : ~~dry sump~~ / oil in sump
- 152. Capacity, lubricant 3.3 ltrs pts quarts US
- 153. Oil cooler : ~~yes~~ / no
- 154. Method of engine cooling Water
- 155. Capacity of cooling system 4.9 ltrs pints quarts US
- 156. Cooling fan (if fitted), dia. 31 cm inches
- 157. Number of blades of cooling fan 4

Bearings

- 158. Crankshaft main, type Plain Dia. 50 mm in.
- 159. Connecting rod big end, Plain Dia. 45 mm in.

Weights

- 160. Flywheel (clean) 9.5 kg lbs
- 161. Flywheel with clutch (all turning parts) 13.1 kg lbs
- 162. Crankshaft 10.8 kg
- 163. Connecting rod 0.43 kg lbs
- 164. Piston with rings and pin 0.33 kg lbs



Make NISSAN

Model B110

F. I. A. Rec. No.

FOUR STROKE ENGINES

- 170. Number of camshafts 1 171. Location Cylinder block
- 172. Type of camshaft drive Chain
- 173. Type of valve operation Rocker arm

INLET (see page 8) *

- 180. Material(s) of inlet manifold Al-Cast
- 181. Diameter of valves 35 mm 1.38 inches
- 182. Max. valve lift 9 mm 0.35 in. 183. Number of valve springs 2
- 184. Type of spring Coil 185. Number of valves per cylinder 1
- 186. Tappet clearance for checking timing (cold) 0.35 mm inches
- 187. Valves open at (with tolerance for tappet clearance indicated) B.T.D.C $14^{\circ} \pm 7^{\circ}$
- 188. Valves close at (with tolerance for tappet clearance indicated) A.B.D.C $54^{\circ} \pm 7^{\circ}$
- 189. Air filter, type Dry

EXHAUST (see page 8)

- 195. Material (s) of exhaust manifold Cast-Iron
- 196. Diameter of valves 29 mm 1.14 inches
- 197. Max. valve lift 9 mm 0.35 in. 198. Number of valve springs 2
- 199. Type of spring Coil 200. Number of valves per cylinder 1
- 201. Tappet clearance for checking timing (cold) 0.35 mm inches
- 202. Valves open at (with tolerance for tappet clearance indicated) B.B.D.C $56^{\circ} \pm 7^{\circ}$
- 203. Valves close at (with tolerance for tappet clearance indicated) A.T.D.C $12^{\circ} \pm 7^{\circ}$

CARBURETION (photograph N)

- 210. Number of carburetors fitted 1 211. Type Down-Draft
- 212. Make HITACHI 213. Model DCG306-1
- 214. Number of mixture passages per carburetor 2
- 215. Flange hold diameter of exit port(s) of carburetor Primary 26, Secondary 30 mm in.
- 216. Minimum dimensions of mixture passage (s) ~~with piston at max height~~
 Primary 20 mm inches
 Secondary 30

INJECTION (if fitted)

- 220. Make of pump 221. Number of plungers
- 222. Model or type of pump 223. Total number of injectors
- 224. Location of injectors
- 225. Minimum diameter of inlet pipe mm inches

*) for additional information concerning two-stroke engines and super-charged engines see page 13.



Make NISSAN

Model B110

F. I. A. Rec. No.

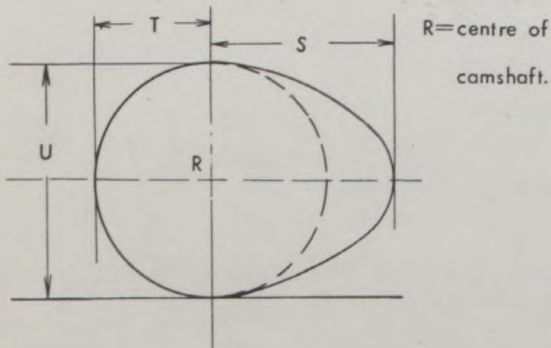
ENGINE ACCESSORIES

- 230. Fuel pump : mechanical ~~and/or electric~~
- 231. No. fitted 1
- 232. Type of ignition system **Make and Break**
- 233. No. of distributors 1
- 234. No. of ignition coils 1
- 235. No. of spark plugs per cylinder 1
- 236. Generator, type ~~dyno~~/alternator-number fitted 1
- 237. Method of drive **V-Belt**
- 238. Voltage of generator 12 volts
- 239. Battery, number 1
- 240. Location **Engine room**
- 241. Voltage of battery 12 volts

ENGINE AND CAR PERFORMANCES (as declared by manufacturer in catalogue)

- 250. Max. engine output 68ps (type of horsepower: JIS) at 6,000 rpm
- 251. Maximum rpm 6,400 output at that figure 64ps
- 252. Maximum torque 9.7 kg-m at 3,600 rpm
- 253. Maximum speed of the car 150 km/hour miles / hour

255.



Inlet cam

S =	21	mm	0.83	inches
T =	15.4	mm	0.61	inches
U =	30.8	mm	1.21	inches

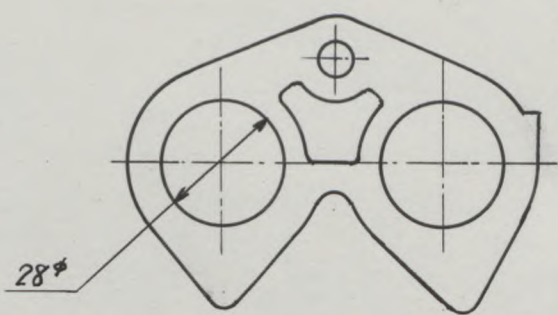
Exhaust cam

S =	21	mm	0.83	inches
T =	15.4	mm	0.61	inches
U =	30.8	mm	1.21	inches

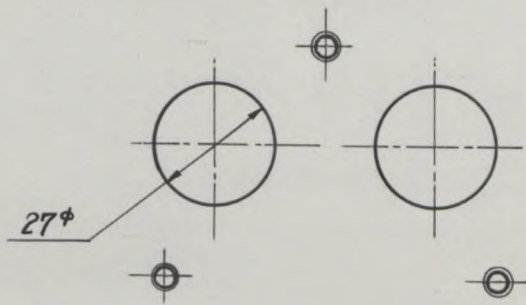


Drawing inlet manifold ports, side of cylinder-head. Indicate scale or dimensions and manufacturing tolerance.

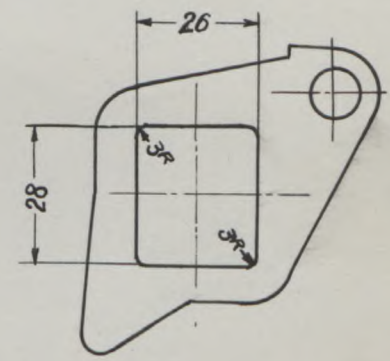
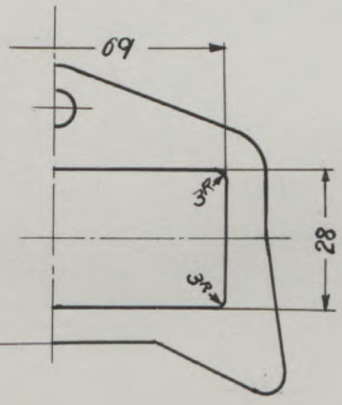
Unit: mm
Tolerance: ±1.5



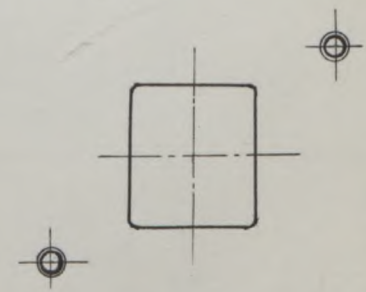
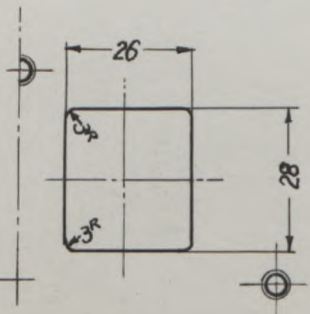
Drawing of entrance to inlet port of cylinder-head. Indicate scale or dimensions and manufacturing tolerance.



Drawing exhaust manifold ports, side of cylinder-head. Indicate scale or dimensions and manufacturing tolerance.



Drawing of exit to exhaust port of cylinderhead. Indicate scale or dimensions and manufacturing tolerance.



IMPORTANT- The conformity of the car with the following items of the present recognition form is to be disregarded during the scrutineering, when the vehicle has been entered in group 2 (Touring cars) or 3 (Grand Touring cars) : 41, 72, 80, 91, 142, 143, 144, 145, 146, 153, 156, 157, 160, 161, 162, 163, 164, 182, 184, 186, 187, 188, 189, 199, 201, 202, 203, 212, 213, 215, 216, 222, 225, 230, 250, 251, 252, 253, and photographs I, M, N, and page 8

During the scrutineering of cars entered in group 4 (Sportscars) only the following items of the present recognition form are to be taken into consideration : 1, 2, 3, 9, 20, 21, 22, 23, 24, 25, 26, 70, 71, 78, 79, 90, 130, 131, 132, 133, 134, 135, 136, 137, 138, 139, 140, 141, 147, 148, 149, 150, 158, 159, 170, 171, 172, 173, 185, 200, 270, 271, 274, 275, 290, 291, 292 and photographs A, B, D, E, F, G, H, J, K, and O.

Optional equipment affecting preceding information. This to be stated together with reference number.

The following items have been added.

Photograph C Interior View



Coupe

Photograph A 3/4 View, Front



Four Door Sedan

Photograph A 3/4 View, Front



9. Weight
Coupe & Four door sedan
640 kg 1411 lbs

Photograph

Photograph B 3/4 View, Rear



Photograph B 3/4 View, Rear



5356

Make NISSAN

Model B110

F. I. A. Rec. No.

Photograph

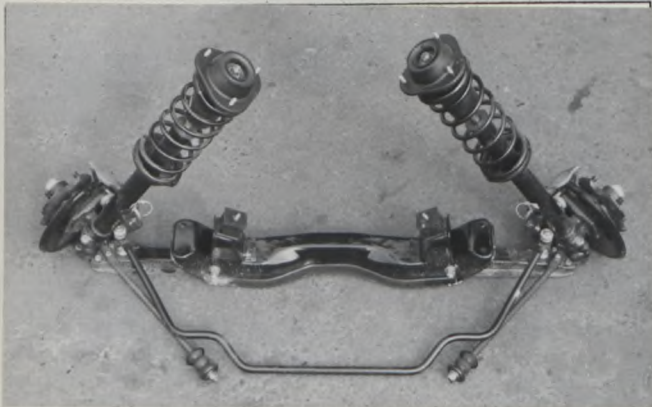
B, 3/4 view of car from rear



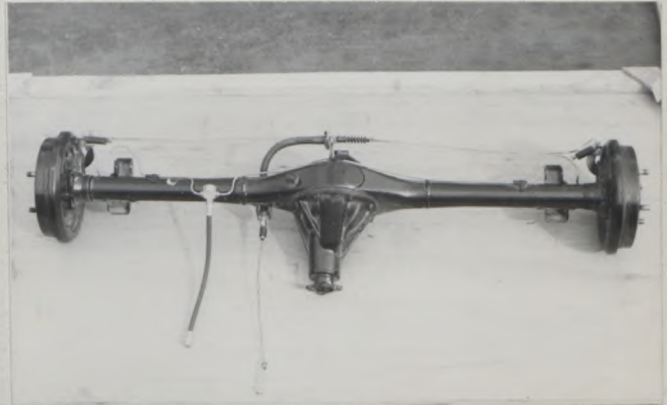
C, interior view of car through driver's door (open or removed) with dashboard



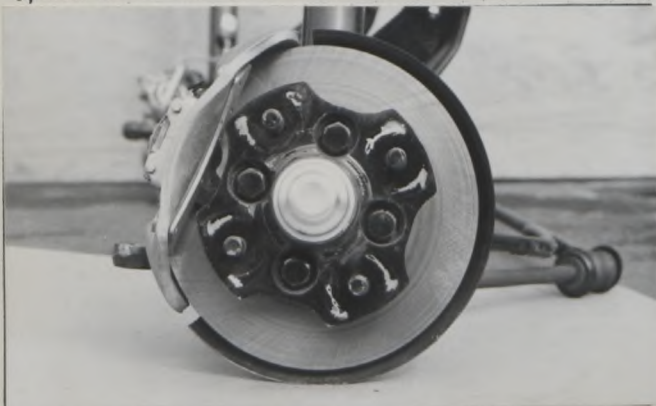
D, front axle complete, removed from car. Without wheels.



E, Rear axle complete without wheels, removed from car.



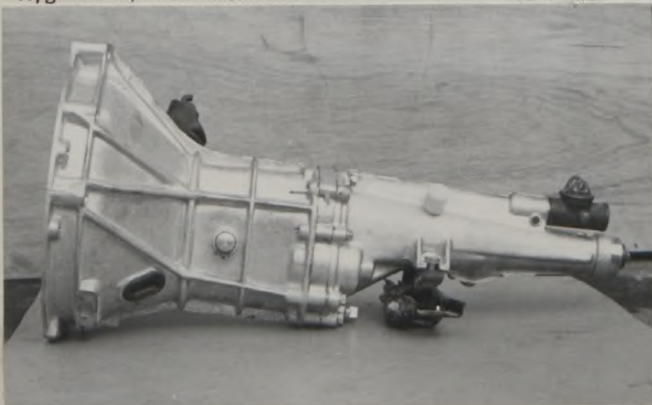
F, front brake, drum removed or disc with caliper(s)



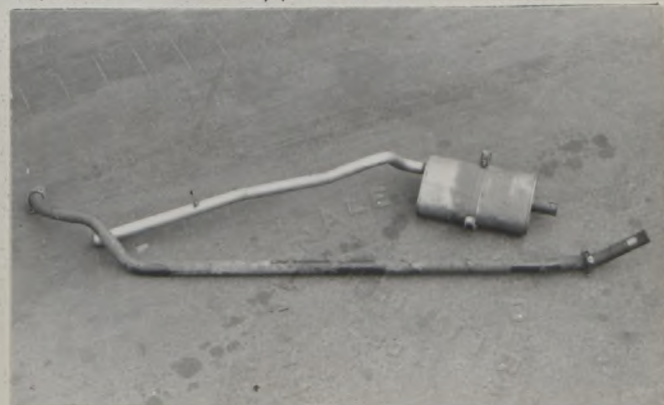
G, rear brake, drum removed or disc with caliper(s)



H, gear-box, view from side



I, silencer + exhaust pipes after exhaust manifold.



5356

Make NISSAN

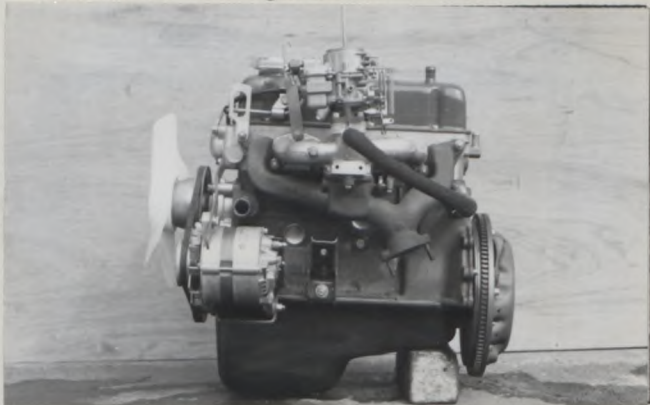
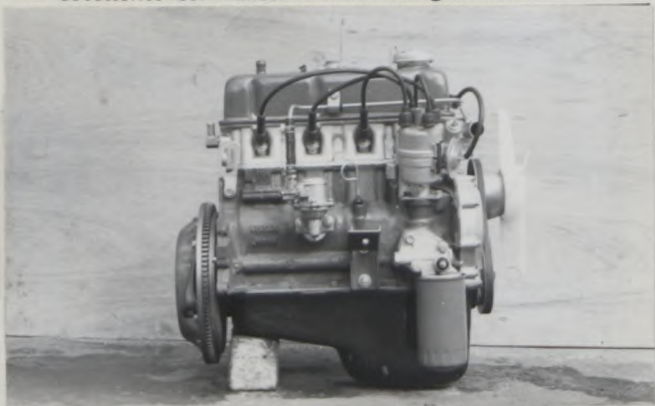
Model B110

F. I. A. Rec. No

Photograph

engine unit out of car, from right. With clutch and J, accessories but without air filter nor gear-box.

Engine unit out of car, from left. With clutch and accessories but without gear-box nor air filter.



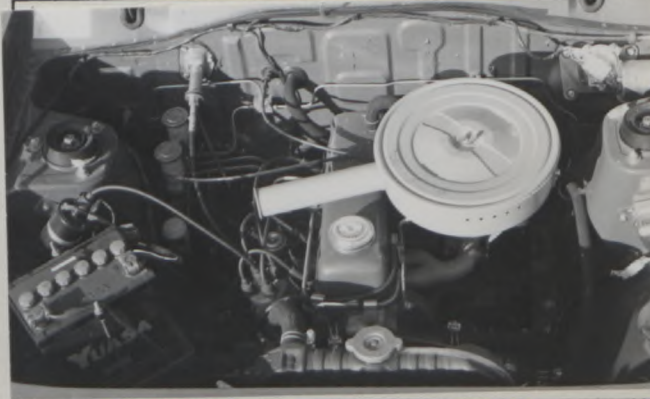
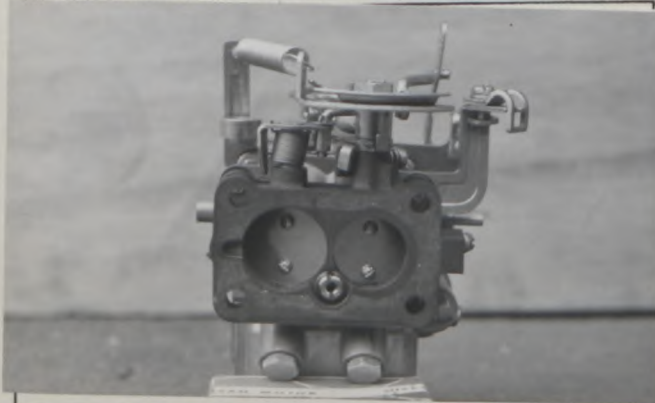
L, combustion chamber

M, piston crown



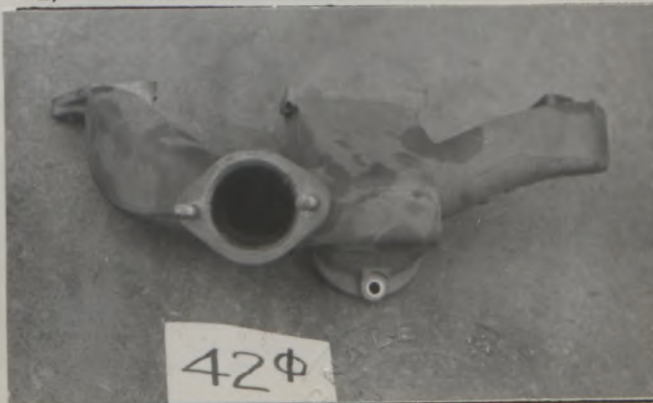
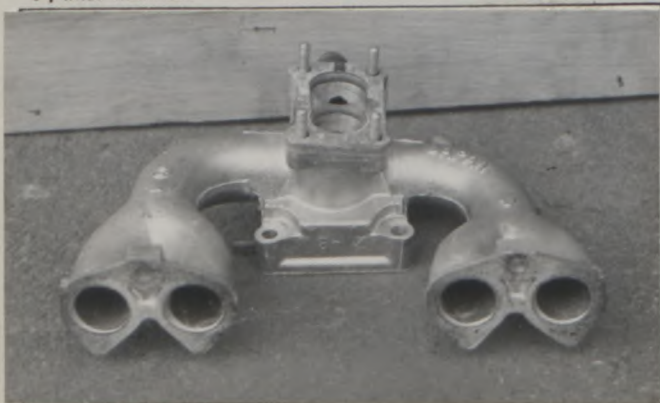
N. Carburettor (view from side of manifold)

O, engine in car with all accessories, bonnet open or removed.



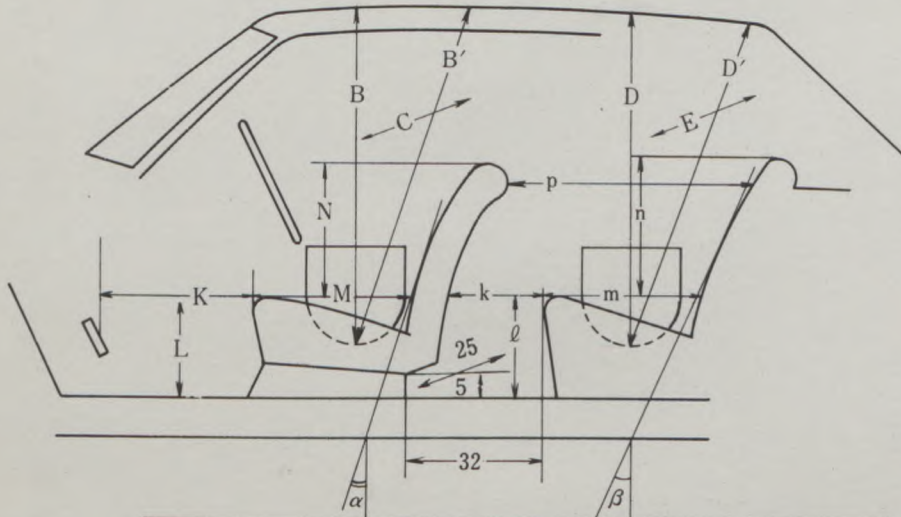
P, inlet manifold

Q, exhaust manifold



DIMENSIONS OF INTERIOR
(Conform to Art. 253 b of Appendix J)

For four seaters :



Minimum Dimensions (cm)							
B	B'	α	C	D	D'	β	E
94	98	15°	126	94	94	20°	126

Minimum Dimensions (cm)										
L	l	M	m	N	n	k+m	p	k	k+l+m	K+L+M
29	30	48	48	48	50	70	67	22	100	122
0.9L = 26.1		0.85M = 40.8		0.8N = 38.4		0.8(k+m) = 42		(15)	(95)	(120)



Make NISSAN

Model B110

F. I. A. Rec. No.

TWO STROKE ENGINES

- 300. System of cylinder scavenging
- 301. Type of lubrication
- 302. Inlet ports, length measured around cylinder wall mm inches
- 303. Height inlet port mm in. 304. Area mm² sq. in.
- 305. Exhaust ports, length measured around cylinder wall mm inches
- 306. Height exhaust port mm in. 307. Area mm² sq. in.
- 308. Transfer port, length measured around cylinder wall mm inches
- 309. Height transfer port mm in. 310. Area. mm² sq. in.
- 311. Piston ports, length measured around piston mm inches
- 312. Height piston port mm in. 313. Area mm² sq. in.
- 314. Method of precompression 315. Precompression cyl.: yes /no
- 316. Bore mm inches 317. Stroke mm inches
- 318. Distance from top of cyl. block to highest point of exhaust port : mm inches
- 319. Distance from top of cyl. block to lowest point of inlet port : mm inches
- 320. Distance from top of cyl. block to highest point of transfer port : mm inches
- 321. Drawing of cylinder ports.

330. Supercharging—state full details hereafter :

JAPAN AUTOMOBILE FEDERATION

庭山博史

Hiroshi Niwayama





JAPAN AUTOMOBILE FEDERATION F. I. A. Homol. No

5356/1/15
GR II

FEDERATION INTERNATIONALE DE L'AUTOMOBILE

Amendment to Form of Recognition
in accordance with the International
Sporting Code.

Make NISSAN **Model** B110

Modification's application starts with serial No. chassis B110-000001
engine A12 -000001

Application of this amendment started the **JUNE 1970**

Commercial denomination after application of modifications **JULY 1970**

The modifications are to be considered as: Variant / ~~normal evolution of the type~~

Date amendment is valid from **1/10/70** List **70/10**

Description of amendment

The following item have been added for group 2 (NOT VALID FOR GROUP 1 ONLY)
OVER FENDER

Front

Rear



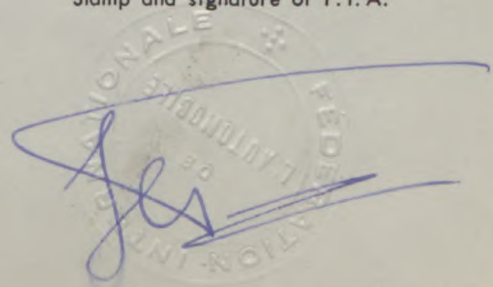
Stamp and signature of
National Sporting Authority

JAPAN AUTOMOBILE FEDERATION

Stamp and signature of F. I. A.

難波清治

Yasuharu Nanba





JAPAN AUTOMOBILE FEDERATION

社団 日本自動車連盟
法人

J·A·F公認番号 T-139 V-2
発効年月日 71年5月末日

F. I. A. Homol. No 5356/2/25

FEDERATION INTERNATIONALE DE L'AUTOMOBILE

Form of recognition accordance with
Appendix J to the International Sporting Code.

国際スポーツ法典付則J項及びJAF国内競技車両規則に従った公認書式。

Make NISSAN MOTOR CO., LTD. Model B110 (DATSUN SUNNY 1200)
 製造会社名 型式及び通称名
 Modification's application starts with serial No. chassis engine 適用シャーシー番号 B110-000001
 適用エンジン番号 A12-000001
 Application of this amendment started the MARCH 1970
 適用年月日
 Commercial denomination after application of modifications
 The modifications are to be considered as: Variant / ~~変型 / 元形進化~~
 変型 / 元形進化
 Date amendment is valid from 1st July 1971 List 71/7

Description of amendment 内容

The following items have been added

- 142. Compression ratio 10.0
- 143. Volume of one combustion chamber 29.1 cm³
- 156. Cooling fan dia 33 cm
- 187. Valve open at B. T. D. C. 20° ± 7°
- 188. Valve close at A. B. D. C. 56° ± 7°
- 202. Valve open at B. B. D. C. 58° ± 7°
- 203. Valve open at A. T. D. C. 18° ± 7°
- 210. Number of carburettors 2
- 211. Type Side-draft
- 212. Make HITACHI
- 213. Model HJEB38W
- 214. Number of mixture passages per carburettor 1
- 215. Flange held diameter of exit port(s) of carburettor 38mm
- 216. Minimum dimensions of mixture passage(s) with piston at max height 29mm
(example: su)

Stamp and signature of the JAF

JAF公認印及び署名

難波靖治

Yasuharu Nanba

Stamp and signature of the F.I.A.

Make NISSAN

Model E110
型式

J·A·F公認番号 T-139 U-2
F.I.A. Rec. No. 5356/2/25

250. Max. engine out put 83ps at 6,400 rpm
251. Maximum rpm 6,800 output at that figure 80
252. Maximum torque 10.0 kg-m at 4,400 rpm
253. Maximum speed ^{of} at the car 160 km/hour
255. Inlet cam
- | | |
|-------------|-------------|
| S = 20.9 mm | 0.82 inches |
| T = 15.0 mm | 0.59 inches |
| U = 30.1 mm | 1.18 inches |

Exhaust cam

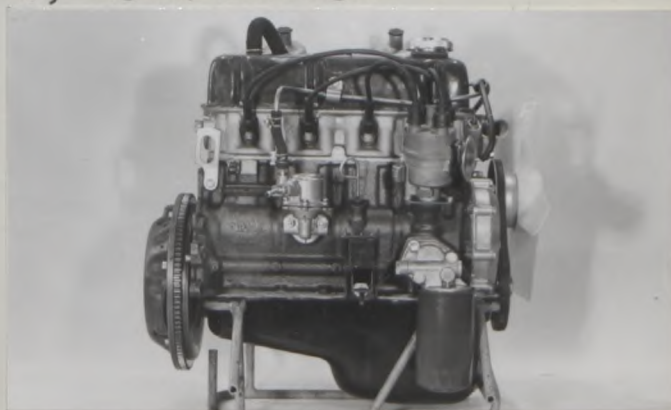
S = 20.9 mm	0.82 inches
T = 15.0 mm	0.59 inches
U = 30.1 mm	1.18 inches

Photograph

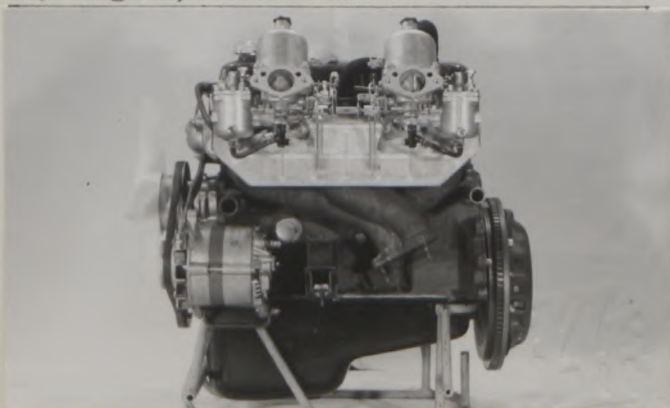
I, Silencer



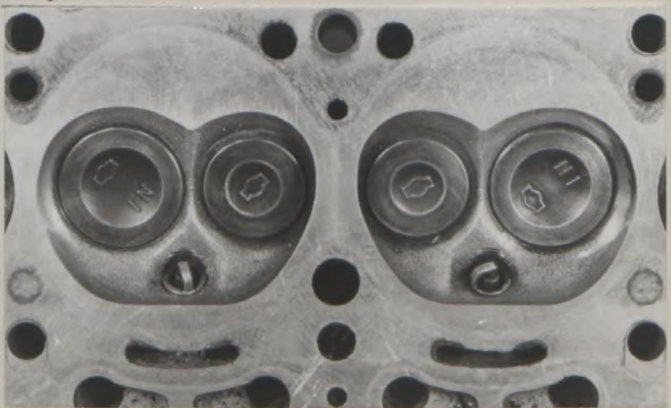
J, Engine, from right



K, Engine, from left



L, Combustion chamber

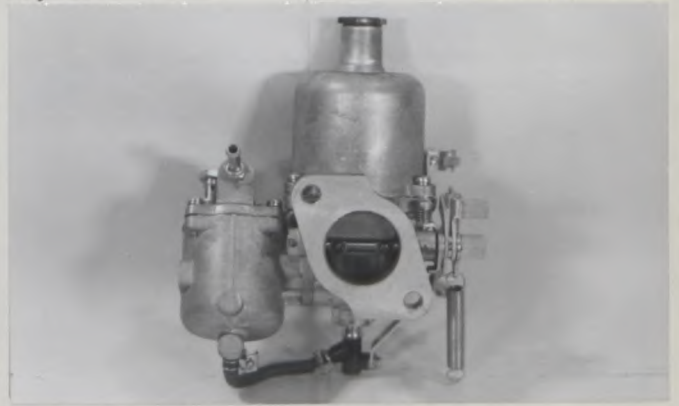


Photograph

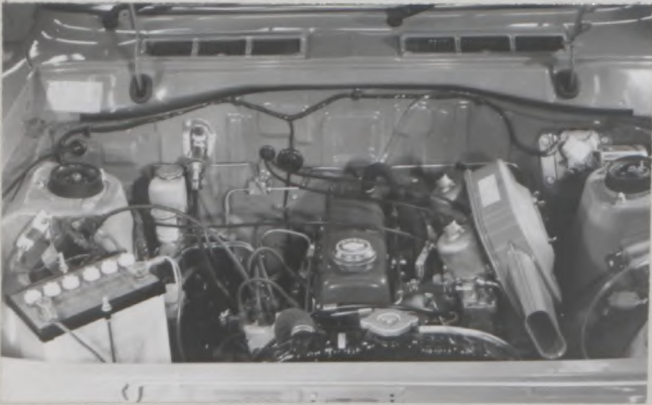
M, Piston crown



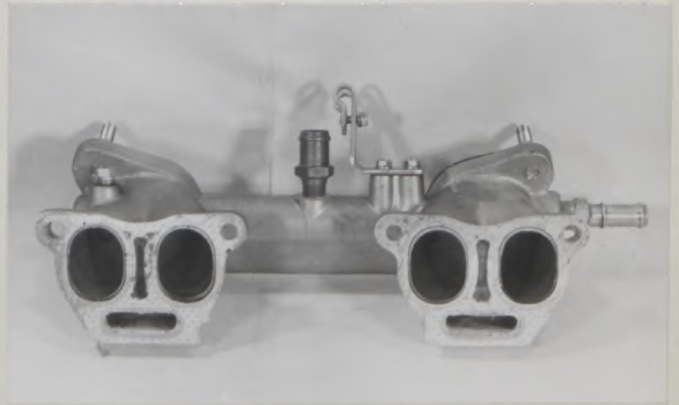
N, Carburetor



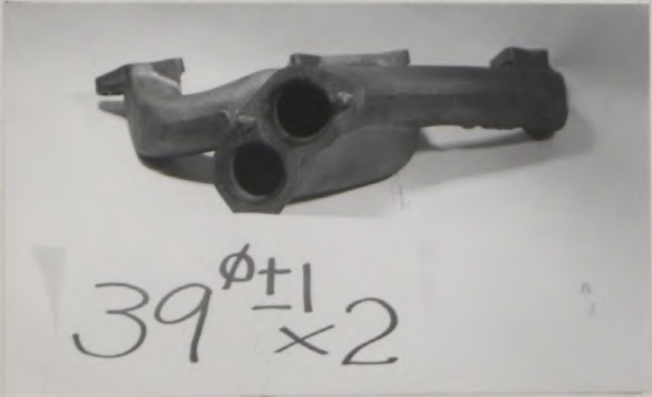
O, Engine in car



P, Inlet manifold



Q, Exhaust manifold



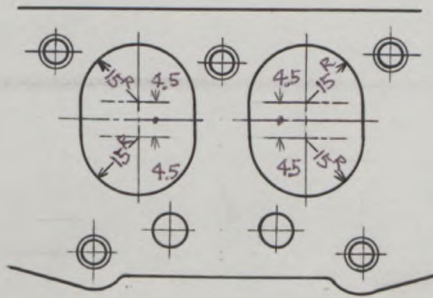
Make NISSAN

Model BL10
型式

J·A·F公認番号 T-139V-2
F.I.A. Rec. No. 5356 / 2/25

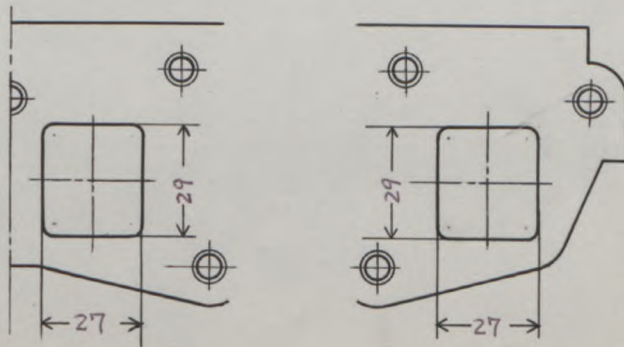
Drawing inlet manifold ports, side of cylinder-head/~~housing~~ scale or dimensions and manufacturing tolerance.

Drawing of entrance to inlet port of cylinder-head/~~housing~~ scale or dimensions and manufacturing tolerance.



Drawing exhaust manifold ports, side of cylinder-head/~~housing~~ scale or dimensions and manufacturing tolerance.

Drawing of exit to exhaust port of cylinderhead/~~housing~~. Indicate scale or dimensions and manufacturing tolerance.



Unit: mm
Tolerance: ± 1.5



JAPAN AUTOMOBILE FEDERATION

社団法人 日本自動車連盟

J.A.F 公認番号 T-139 E-1
発効年月日 47. 3. 31

F. I. A. Homol. No 5356

3/E

FEDERATION INTERNATIONALE DE L'AUTOMOBILE

Form of recognition accordance with Appendix J to the International Sporting Code.

国際スポーツ法典付則J項及びJAF国内競技車両規則に従った公認書式。

Make NISSAN MOTOR CO., LTD. **Model** B110 (DATSUN SUNNY 1200)
 製造会社名 型式及び通称名
Modification's application starts with serial No. chassis 適用シャーシー番号 B110-341,001
 engine 適用エンジン番号 A12-000,001
 Application of this amendment started the **DEC. 1971**
 適用年月日
 Commercial denomination after application of modifications
 The modifications are to be considered as: ~~variant~~ / normal evolution of the type
 変型 / 正常進化
 Date amendment is valid from List

Description of amendment 内容

Photograph

A, 3/4 view of car from front



B, 3/4 view of car from rear



C, Interior view



Stamp and signature of the JAF

JAF公認印及び署名

進山博史

Hiroshi Niwayama



Stamp and signature of the F.I.A.

Signature of the F.I.A.

3/1E

The following items have been added.

4 DOOR SEDAN

Photograph

A, 3/4 view, front



B, 3/4 view, rear



COUPE MODEL (KB110)

Photograph

A, 3/4 view, front



B, 3/4 view, rear





JAPAN AUTOMOBILE FEDERATION

社団法人 日本自動車連盟

J.A.F公認番号 T-139 V-5

発効年月日 47.10.31

F.I.A. Homol. No 5356

h/3V

FEDERATION INTERNATIONALE DE L'AUTOMOBILE

Form of recognition accordance with Appendix J to the International Sporting Code.

国際スポーツ法典付則J項及びJAF国内競技車両規則に従った公認書式。

Make NISSAN MOTOR CO,LTD

製造会社名

Model B110 (DATSUN SUNNY 1200)

型式及び通称名

Modification's application starts with serial

No. chassis 適用シャーシー番号 B110-000001
engine 適用エンジン番号 A12-000001

Application of this amendment started the JUN.1972

適用年月日

Commercial denomination after application of modifications

The modifications are to be considered as: Variant / ~~normal evolution of the type~~
変型 / 正常進化

Date amendment is valid from

List

Description of amendment 内容

The following items have been added.

GEAR BOX

271. No. of gear box ratios forward

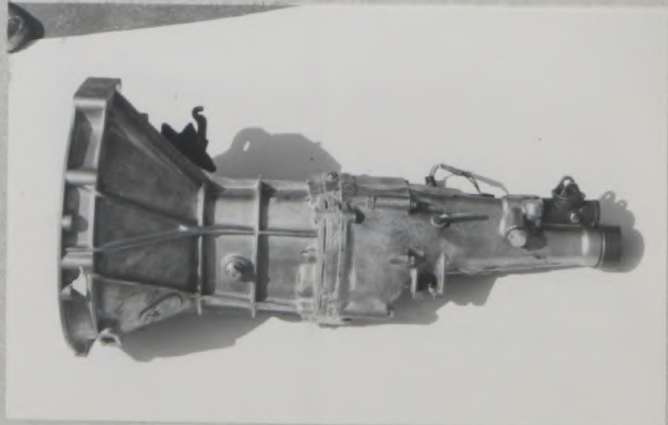
5

272. Synchronized forward ratio

1,2,3,4&5

277	Manual	
	Ratio	No. teeth
1	3.76	$\frac{29}{19} \times \frac{32}{13}$
2	2.37	$\frac{29}{19} \times \frac{28}{18}$
3	1.66	$\frac{29}{19} \times \frac{25}{23}$
4	1.25	$\frac{29}{19} \times \frac{23}{28}$
5	1.00	
reverse	4.04	$\frac{29}{19} \times \frac{15}{13} \times \frac{39}{17}$

Photograph H. GEAR BOX



Stamp and signature of the JAF

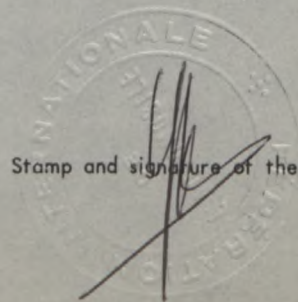
JAF公認印及び署名

三井平八郎

Heihachiro Mitsui



Stamp and signature of the F.I.A.



Make NISSAN

Model B110
型式

F.I.A. Rec. No. 5356

OPTIONAL EQUIPMENT [VALID FOR GROUP 2 ONLY]

5/4V

FRONT DISC BRAKE

93. Number of cylinders per wheel	4
94. Bore of wheel cylinders	41.3 mm
100. Outside diameter	261 mm
101. Thickness of disc	20 mm
102. Length of brake linings	104 mm
103. Width of brake linings	47 mm
104. Number of pad per brake	2
105. Total area per brake	9776 mm ²

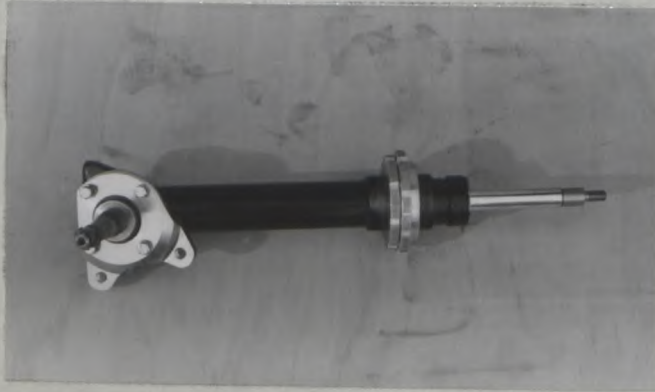
Photograph F. Front brake



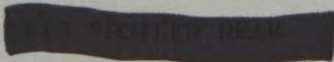
Parts No. R/H 41000-H7575
L/H 41010-H7575

"valable en Groupe 2 uniquement"
"valid for Group 2 only"

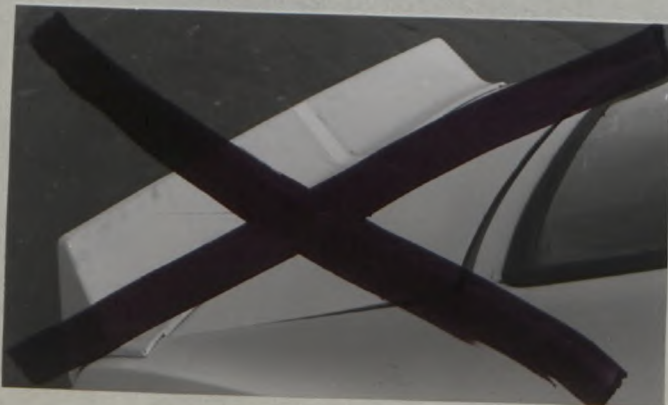
FRONT SUSPENSION STRUT



Parts No. R/H 54302-H7575
L/H 54302-H7575



Parts No. 98100-H2075



5/hV

OVER FENDER FRONT

Parts No. R/H 63820-H2075

L/H 63821-H2075



OVER FENDER REAR

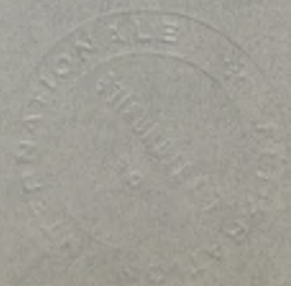
Parts No. R/H 78910-H3076

L/H 78911-H3076



"valable en Groupe 2 uniquement"

"valid for Group 2 only"





JAPAN AUTOMOBILE FEDERATION

社団法人 日本自動車連盟

J.A.F公認番号 T-139 V-7
発効年月日 1973年4月30日
F.I.A. Homol. No 5356

6/5V

FEDERATION INTERNATIONALE DE L'AUTOMOBILE

Form of recognition accordance with
Appendix J to the International Sporting Code.

国際スポーツ法典付則J項及びJAF国内競技車両規則に従った公認書式。

Make NISSAN MOTOR CO, LTD Model B110 (DATSUN SUNNY 1200)
製造会社名 型式及び通称名
Modification's application start with serial No. chassis 適用シャーシー型式番号 B110-000001
engine 適用エンジン型式番号 A12-000001

Application of this amendment started the nov .1972
適用年月日

Commercial denomination after application of modifications

The modifications are to be considered as: Variant / ~~normal evolution of the type~~
変型 / ~~正常進化~~

Date amendment is valid from 1.9.73 List

Description of amendment 内容

Another type of gear ratios of GEAR BOX & FINAL DRIVE can be selected for
B110 cars as makers option.

GEAR BOX

277	Manual		Alternative manual	
	Ratio	No.teeth	Ratio	No.teeth
1	3.76	$\frac{29}{19} \times \frac{32}{13}$	2.68	$\frac{25}{23} \times \frac{32}{13}$
2	2.37	$\frac{29}{19} \times \frac{28}{18}$	1.69	$\frac{25}{23} \times \frac{28}{18}$
3	1.66	$\frac{29}{19} \times \frac{25}{23}$	1.40	$\frac{25}{23} \times \frac{27}{21}$
4	1.29	$\frac{29}{19} \times \frac{22}{26}$	1.18	$\frac{25}{23} \times \frac{25}{23}$
5	1.00		1.00	
reverse	4.04	$\frac{29}{19} \times \frac{15}{13} \times \frac{39}{17}$	2.88	$\frac{25}{23} \times \frac{15}{13} \times \frac{39}{17}$

FINAL DRIVE

293. Final drive ratio 4.11 4.38
Number of teeth 37/9 35/8

Stamp and signature of the JAF

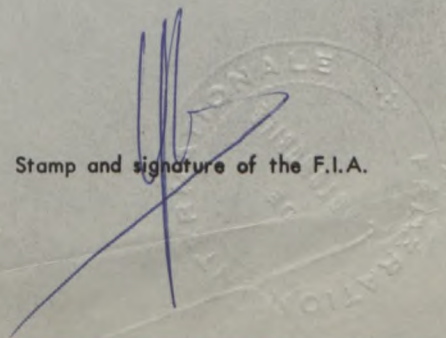
JAF公認印及び署名

難波靖治

Yasuharu Nanba



Stamp and signature of the F.I.A.





JAPAN AUTOMOBILE FEDERATION

社団法人 日本自動車連盟

J.A.F. 公認番号 T-139V-8
発効年月日 1973年7月31日
F.I.A. Homol. No 5356

7/6V

FEDERATION INTERNATIONALE DE L'AUTOMOBILE

Form of recognition accordance with Appendix J to the International Sporting Code.

国際スポーツ法典付則J項及びJAF国内競技車両規則に従った公認書式。

Make NISSAN MOTOR CO., LTD. **Model** DATSUN SUNNY 1200 B110
製造会社名 型式及び通称名

Modification's application starts with serial No. chassis 適用シャーシー型式番号 B110-000001
 engine 適用エンジン型式番号 A12-000001

Application of this amendment started the SEP. 1972
適用年月日

Commercial denomination after application of modifications

The modifications are to be considered as: Variant / ~~variant~~ ~~of the type~~
変型 / 型式

Date amendment is valid from 1.10.73 List

Description of amendment 内容

Optional equipment.

"valable en Groupe 2 uniquement"
"valid for Group 2 only"

VALID FOR GROUP 2 ONLY

SUSPENSION

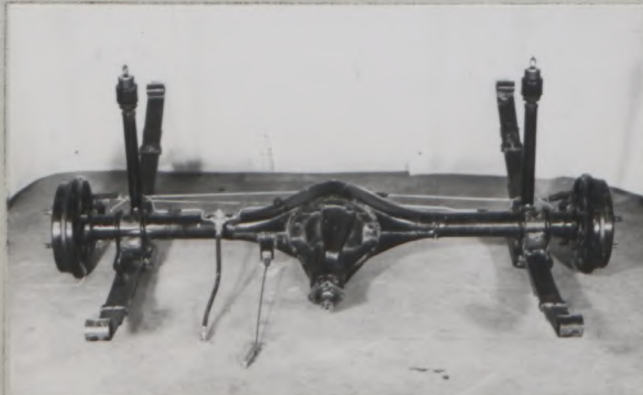
REAR AXLE CASE (Parts No. 43010-H2800)

78. Rear suspension (photograph E), type Photograph

E. Rear axle complete

Rigid

Rear axle case



Stamp and signature of the JAF

JAF公認印及び署名

難波清治



Stamp and signature of the F.I.A.

[Signature]

Yasuharu Nanba

DRIVE TRAIN

7/61

FINAL DRIVE (Parts No. 38300-A6100)

- | | |
|---------------------------|-------------|
| 290. Type of final drive | Hypoid gear |
| 291. Type of differential | Bevel gear |
| 293. Final drive ratio | 3.89 |
| Number of teeth | 35/9 |

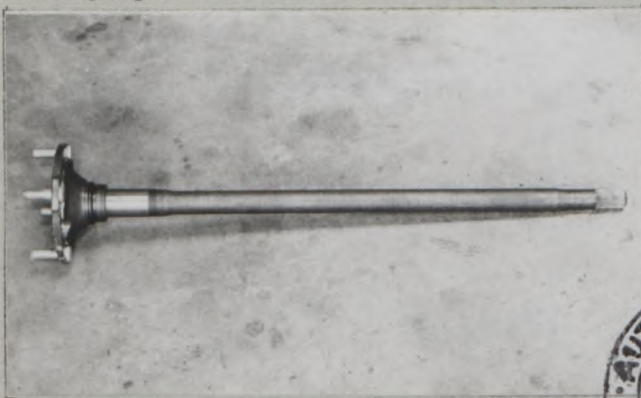
Photograph



"valable en Groupe 2 uniquement"
 "valid for Group 2 only"

REAR AXLE SHAFT (Parts No. 38162-G1000)

Photograph



"valable en Groupe 2 uniquement"
 "valid for Group 2 only"

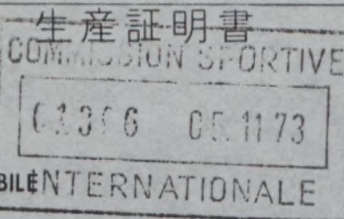




JAPAN AUTOMOBILE FEDERATION

社団法人 日本自動車連盟

REPORT ON MOTOR VEHICLE PRODUCTION



Sub-Commission of Recognition
International Sporting Commission
FEDERATION INTERNATIONALE OF AUTOMOBILES

Date 11th SEP. 1973
年月日

T-2/VY-2

Manufactured by
製造者名

NISSAN MOTOR CO., LTD.

Name of the Car
適用車種名, 型式

DATSUN SUNNY 1200 B(L)210

Production Number of
生産台数

the CAR (with rear air spoiler model)

Month/ Year 年月	Number 数	Number 数	Number 数
MAR / 1973	37		
APR / 1973	185		
MAY / 1973	323		
JUN / 1973	431		
JUL / 1973	487		
Total 合計	1,463		
Remarks 注 CAR (with rear air spoiler model)			

I hereby swear that the production of this name of the CAR (with rear air spoiler model)

上記の通り確かに生産したことを
has been certainly done as above.

証明いたします。

Signature
署名

JIRO TANAKA

Signature

SHOICHI NAKAJIMA

Position
所属, 役職

DIRECTOR OF 2ND DESIGN
ADMINISTRATION DEPARTMENT

Position

MANAGER OF PRODUCTION
CONTROL DEPARTMENT

Certified by

JAPAN AUTOMOBILE FEDERATION

難波靖治

Yasuharu Nanba