



JAPAN AUTOMOBILE FEDERATION

F. I. A. Recognition No. **5357**
Group **I**

FEDERATION INTERNATIONALE DE L'AUTOMOBILE

Form of recognition in accordance with
Appendix J to the International Sporting Code.

Manufacturer **Toyota Motor Co., Ltd.**

Serial No. of chassis **RT82-000001**
engine **7R-100001**

Recognition is valid from **1/7/70**

Cylinder-capacity **1591** cm³ **97.05** cu. in.

Model **Corona 1600 SL RT82-S**

Manufacturer **Toyota Motor Co., Ltd.**

Manufacturer **Toyota Motor Co., Ltd.**

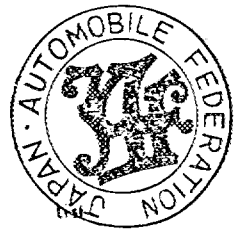
List **7017**

The manufacturing of the model described in this recognition form was started on **Jan. 1970** and the minimum production of **5000** identical cars. in accordance with the specifications of this form was reached on **April 1970**

Photograph A, 3/4 view of car from front



東京都港区芝公園第三丁目一番五
機械振興会館内
社団法人
日本自動車連盟



The vehicle described in this form has been subject to the following amendments :

Variants				Normal evolution of the type			
on	19	rec. No.	List	on	19	rec. No.	List
on	19	rec. No.	List	on	19	rec. No.	List
on	19	rec. No.	List	on	19	rec. No.	List
on	19	rec. No.	List	on	19	rec. No.	List
on	19	rec. No.	List	on	19	rec. No.	List

Stamp and signature of the
National Sporting Authority

Stamp and signature of the F. I. A.

IMPORTANT - the underlined items must be stated in two measuring systems, one of which must be the metric system. See conversion table hereafter.

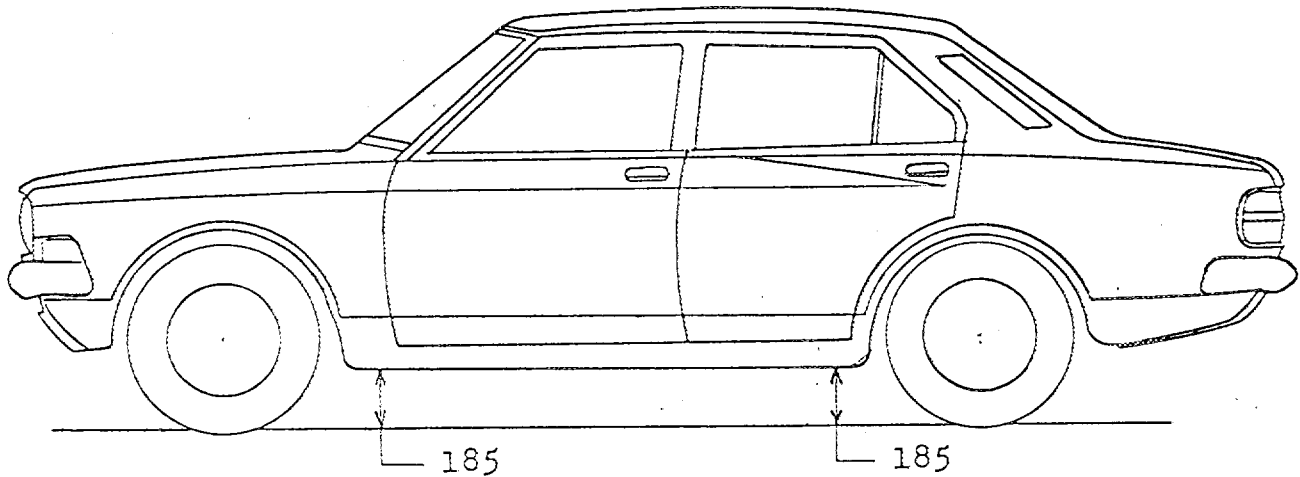
CAPACITIES AND DIMENSIONS

1. <u>Wheelbase</u>	2430	mm	95.7	inches
2. <u>Front track</u>	1300	mm	51.2	inches *
3. <u>Rear track</u>	1280	mm	50.4	inches *
4. Overall length of the car		417	cm	inches
5. Overall width of the car		157	cm	inches
6. Overall height of the car		140	cm	inches
7. <u>Capacity of fuel tank</u> (reserve included)			50	ltrs
	13.2	Gallon US		Gallon Imp.
8. Seating capacity		5		
9. <u>Weight</u> , total weight of the car with normal equipment, water, oil and spare wheel but without fuel nor repair tools:				
	940 kg	925 kg (463.11015)	2035	lbs
	915 kg (国内)	FIAA-	2015 lbs (国内)	cwt

* Differences in track caused by the use of other wheels with different rim widths must be stated when recognition is requested for the wheels concerned.

Specify ground clearance in relation to the track and give drawing of two fixed points of the vehicle's structure at which measurements are taken.

These ground clearance dimensions are only for information when checking the track and can in no way affect the eligibility of the car.



Unit : mm

CONVERSION TABLE

1 inch / pouce	-- 2.54 cm	1 quart US	-- 0.9464 ltrs
1 foot / pied	-- 30.4794 cm	1 pint (pt)	-- 0.568 ltrs
1 square inch / pouce carré	-- 6.452 cm ²	1 gallon Imp.	-- 4.546 ltrs
1 cubic inch / pouce cube	-- 16.387 cm ³	1 gallon US	-- 3.785 ltrs
1 pound / livre (lb)	-- 453.593 gr.	1 hundred weight (cwt)	-- 50.802 kg

CHASSIS AND COACHWORK (Photographs A, B and C)

- 20. Chassis/body construction : ~~XXXXX~~ / unitary construction
- 21. Unitary construction, material (s) Steel
 Separate construction
- 22. Separate Constructions: Material(s) of chassis
- 23. Material (s) of coachwork Steel
- 24. Number of doors 4 Material (s) Steel
- 25. Material (s) of bonnet Steel
- 26. Material (s) of boot lid Steel
- 27. Material (s) of rear-window Glass
- 28. Material (s) of windscreen Glass
- 29. Material (s) of front-door windows Glass
- 30. Material (s) of rear-door windows Glass
- 31. Sliding system of door windows Vertical, Manual
- 32. Material (s) of rear-quarter light

ACCESSORIES AND UPHOLSTERY

- 38. Interior heating : ~~XXXXX~~ - no
- 39. Air-conditioning : ~~XXXX~~ - no
- 40. Ventilation : yes - ~~XXXX~~
- 41. Front seats, type of seats and upholstery Separate , Vinyl leather
- 42. Weight of front seat (s), complete with supports and rails, out of the car :
22kg: x 2 kg lbs
- 43. Rear seats, type of seats and upholstery Bench, Vinyl leather
- 44. Front bumper, material (s) Steel Weight 4.4 kg lbs
- 45. Rear bumper, material (s) Steel Weight 4.0 kg lbs

WHEELS

- 50. Type Pressed steel
- 51. Weight (per wheel, without tyre) 6 kg lbs
- 52. Method of attachment 4 Nuts
- 53. Rim diameter 329.4 mm 13 inches
- 54. Rim width 114 mm 4.5 inches

STEERING

- 60. Type Recirculating ball
- 61. Servo-assistance : ~~XXXX~~ - no
- 62. Number of turns of steering wheel from lock to lock 3.5
- 63. In case of servo-assistance

SUSPENSION

- 70. Front suspension (photogr. D), type Independent, Wishbone
- 71. Type of spring Coil
- 72. Stabiliser (if fitted) Torsion bar
- 73. Number of shockabsorbers 2 74. Type Hydraulic telescopic
- 78. Rear suspension (photogr. E), type Rigid
- 79. Type of spring Leaf
- 80. Stabiliser (if fitted)
- 81. Number of shockabsorbers 2 82. Type Hydraulic telescopic

BRAKES (photographs F and G)

- 90. System Hydraulic
- 91. Servo-assistance (if fitted), type Vacuum servo
- 92. Number of hydraulic master cylinders 2

	FRONT		REAR	
	1		1	
93. Number of cylinders per wheel				
94. Bore of wheel cylinder (s)	50.8 mm	in.	20.6 mm	in.
Drum brakes				
95. Inside diameter	mm	in.	228 mm	in.
96. Length of brake linings	mm	in.	40 mm	in.
97. Width of brake linings	mm	in.	243 mm	in.
98. Number of shoes per brake			2	
99. Total area per brake	mm ²	sq. in.	194 x 10 ² mm ²	sq. in.
Disc brakes				
100. Outside diameter	184 mm	in.	mm	in.
101. Thickness of disc	10 mm	in.	mm	in.
102. Length of brake linings	97 mm	in.	mm	in.
103. Width of brake linings	46 mm	in.	mm	in.
104. Number of pads per brake	2			
105. Total area per brake	78 x 10 ² mm ²	sq. in.	mm ²	sq. in.

ENGINE (photographs J and K)

130. Cycle	4	131. Number of cylinders	4
132. Cylinder arrangement	In line		
133. Bore 86 mm	3.38 in.	134. Stroke 68.5 mm	2.69 in.
135. Capacity per cylinder	398 cm ³		24.2 cu. in.
136. Total cylinder-capacity	1591 cm ³		97.0 cu. in.
137. Material (s) of cylinder block	Cast iron		
138. Material (s) of sleeves (if fitted)			
139. Cylinder-head, material (s)	Cast iron	Number fitted	1
140. Number of inlet ports	4	141. Number of exhaust ports	4
142. Compression ratio	9.5		
143. Volume of one combustion chamber		46.8 cm ³	cu. in.
144. Piston, material	Aluminum - Alloy	145. Number of rings	3
146. Distance from gudgeon pin centre line to highest point of piston crown	39.8 mm		
			inches
147. Crankshaft : cast / stamped		148. Type of crankshaft : integral / XXXXX	
149. Number of crankshaft main bearings		5	
150. Material of bearing cap		Cast iron	
151. System of lubrication : dry sump / oil in sump			
152. Capacity, lubricant 4.1 ltrs			pts quarts US
153. Oil cooler : yes / no		154. Method of engine cooling	Water
155. Capacity of cooling system 7.4 ltrs			pints quarts US
156. Cooling fan (if fitted), dia. 36 cm			inches
157. Number of blades of cooling fan	4		

Bearings

158. Crankshaft main, type	Plain	Dia.	60	mm	in.
159. Connecting rod big end,	Plain	Dia.	53	mm	in.

Weights

160. Flywheel (clean)	10.6 kg	lbs	
161. Flywheel with clutch (all turning parts)		16.6 kg	lbs
162. Crankshaft	15 kg	lbs	
163. Connecting rod		0.85 kg	lbs
164. Piston with rings and pin	0.55 kg	lbs	

Make Toyota

Model RT82-S

F. I. A. Rec. No.

FOUR STROKE ENGINES

170. Number of camshafts 1 171. Location Cylinder head
172. Type of camshaft drive Chain
173. Type of valve operation Rocker

INLET (see page 8) *

180. Material(s) of inlet manifold Aluminum - Alloy
181. Diameter of valves 43 mm 1.69 inches
182. Max. valve lift 10 mm 0.39 in. 183. Number of valve springs 2
184. Type of spring Coil 185. Number of valves per cylinder 1
186. Tappet clearance for checking timing (cold) 0.18 mm inches
187. Valves open at (with tolerance for tappet clearance indicated) B.T.D.C. $15^{\circ} \pm 7^{\circ}$
188. Valves close at (with tolerance for tappet clearance indicated) A.B.D.C. $45^{\circ} \pm 7^{\circ}$
189. Air filter, type Dry

EXHAUST (see page 8)

195. Material (s) of exhaust manifold Cast iron
196. Diameter of valves 34 mm 1.34 inches
197. Max. valve lift 10 mm 0.39 in. 198. Number of valve springs 2
199. Type of spring Coil 200. Number of valves per cylinder 1
201. Tappet clearance for checking timing (cold) 0.33 mm inches
202. Valves open at (with tolerance for tappet clearance indicated) R.B.D.C. $50^{\circ} \pm 7^{\circ}$
203. Valves close at (with tolerance for tappet clearance indicated) A.T.D.C. $10^{\circ} \pm 7^{\circ}$

CARBURETION (photograph N)

210. Number of carburetors fitted 2 211. Type Side draught (SU)
212. Make Aisan 213. Model 7R - B
214. Number of mixture passages per carburetor 1
215. Flange hole diameter of exit port(s) of carburetor 44 mm in.
216. Minimum dimensions of mixture passage(s) with piston at max. height (example: SU)
32 mm inches

INJECTION (if fitted)

220. Make of pump 221. Number of plungers
222. Model or type of pump 223. Total number of injectors
224. Location of injectors
225. Minimum diameter of inlet pipe mm inches

*) for additional information concerning two-stroke engines and super-charged engines see page 13.

Make Toyota

Model RT82-S

F.I.A. Rec. No.

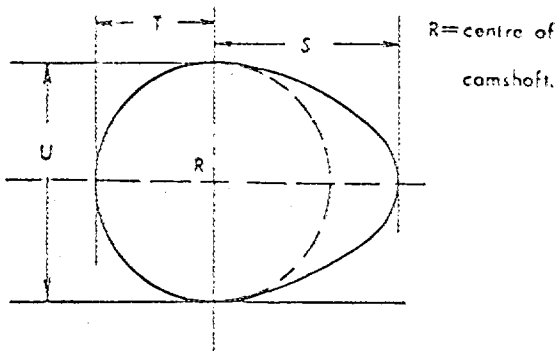
ENGINE ACCESSORIES

230. Fuel pump	mechanical and / electric	231. No. fitted	1
232. Type of ignition system	Make & break	233. No. of distributors	1
234. No. of ignition coils	1	235. No. of spark plugs per cylinder	1
236. Generator, type 3X36V /alternator-number fitted	1	237. Method of drive	V belt
238. Voltage of generator	12 volts	239. Battery, number	1
240. location	Engine room		
241. Voltage of battery	12 volts		

ENGINE AND CAR PERFORMANCES (as declared by manufacturer in catalogue)

250. Max. engine output	100 PS	(type of horsepower: JIS) at	6200	rpm
251. Maximum rpm	6500	output at that figure	95 PS	
252. Maximum torque	13.6 kg-m	at	4200 rpm	
253. Maximum speed of the car	165	km/hour		miles / hour

255.



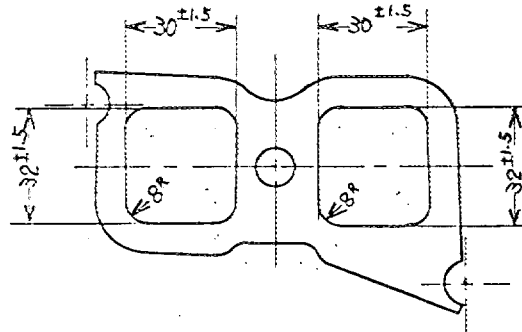
Inlet cam

S =	26.1	mm	1.028	inches
T =	18.0	mm	0.709	inches
U =	36.0	mm	1.418	inches

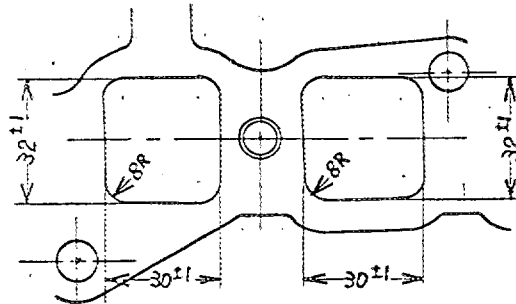
Exhaust cam

S =	26.2	mm	1.032	inches
T =	18.0	mm	0.709	inches
U =	36.1	mm	1.421	inches

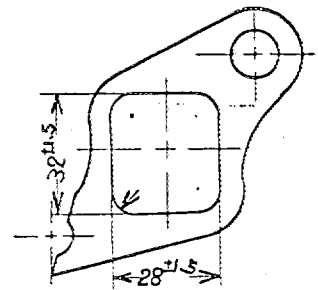
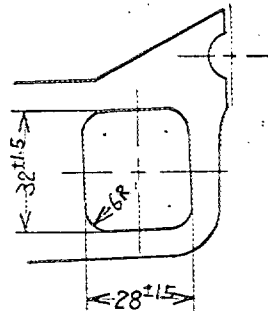
Drawing inlet manifold ports, side of cylinder-head. Indicate scale or dimensions and manufacturing tolerance.



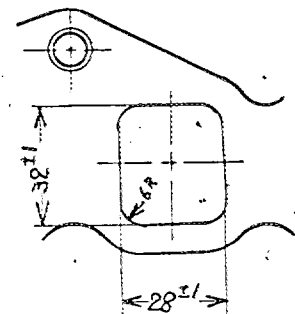
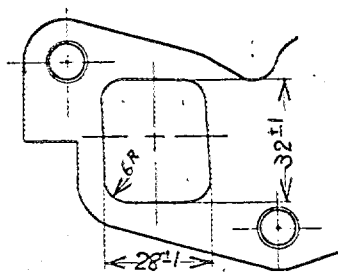
Drawing of entrance to inlet port of cylinder-head. Indicate scale or dimensions and manufacturing tolerance.



Drawing exhaust manifold ports, side of cylinder-head. Indicate scale or dimensions and manufacturing tolerance.



Drawing of exit to exhaust port of cylinderhead. Indicate scale or dimensions and manufacturing tolerance.



Unit : mm

Make Toyota

Model RT82-S

F. I. A. Rec. No.

DRIVE TRAIN.

CLUTCH

- 260. Type of clutch Dry single plate 261. No. of plates 1
- 262. Dia. of clutch plates 20.5 cm inches
- 263. Dia. of linings, inside 14.0 cm in. outside 20.0 cm in.
- 264. Method of operating clutch Hydraulic

GEAR BOX (photograph H)

- 270. Manual type, make Toyota Method of operation Mechanical
- 271. No. of gear-box ratios forward 4 272. Synchronized forward ratios 1, 2, 3 & 4
- 273. Location of gear-shift Floor
- 274. Automatic, make type
- 275. No. of forward ratios 276. Location of gear-shift

277.	Manual		Automatic		Alternative manual/ automatic		Ratio	
	Ratio	No. teeth	Ratio	No. teeth	Ratio	No. teeth	Ratio	No. teeth
1	3.673	$\frac{31}{18} \times \frac{32}{15}$			3.337	$\frac{31}{18} \times \frac{31}{16}$		
2	2.114	$\frac{31}{18} \times \frac{27}{22}$			1.948	$\frac{31}{18} \times \frac{26}{23}$		
3	1.403	$\frac{31}{18} \times \frac{22}{27}$			1.340	$\frac{31}{18} \times \frac{21}{27}$		
4	1.000				1.000			
5								
6								
reverse	4.183	$\frac{31}{18} \times \frac{22}{14}$			4.183	$\frac{31}{18} \times \frac{34}{14}$		

- 278. Overdrive, type
- 279. Forward gears on which overdrive can be selected
- 280. Overdrive ratio

FINAL DRIVE

- 290. Type of final drive Hypoid gear
- 291. Type of differential Bevel gear
- 292. Type of limited slip differential (if fitted) 3.90, 4.375
- 293. Final drive ratio 39/10, 35/8
- Number of teeth

Make Toyota

Model RT82-S

F. I. A. Rec. No.

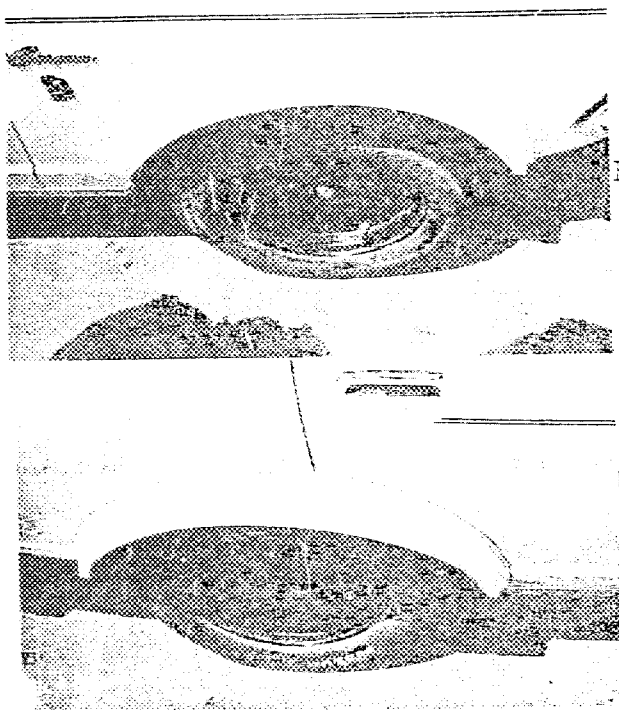
IMPORTANT. The conformity of the car with the following items of the present recognition form is to be disregarded during the scrutineering, when the vehicle has been entered in group 2 (Touring cars) or 3 (Grand Touring cars) : 41, 72, 80, 91, 142, 143, 144, 145, 146, 153, 156, 157, 160, 161, 162, 163, 164, 182, 184, 186, 187, 188, 189, 199, 201, 202, 203, 212, 213, 215, 216, 222, 225, 230, 250, 251, 252, 253, and photographs I, M, N, and page 8

During the scrutineering of cars entered in group 4 (Sportscars) only the following items of the present recognition form are to be taken into consideration : 1, 2, 3, 9, 20, 21, 22, 23, 24, 25, 26, 70, 71, 78, 79, 90, 130, 131, 132, 133, 134, 135, 136, 137, 138, 139, 140, 141, 147, 148, 149, 150, 158, 159, 170, 171, 172, 173, 185, 200, 270, 271, 274, 275, 290, 291, 292 and photographs A, B, D, E, F, G, H, J, K, and O.

Optional equipment affecting preceding information. This to be stated together with reference number.

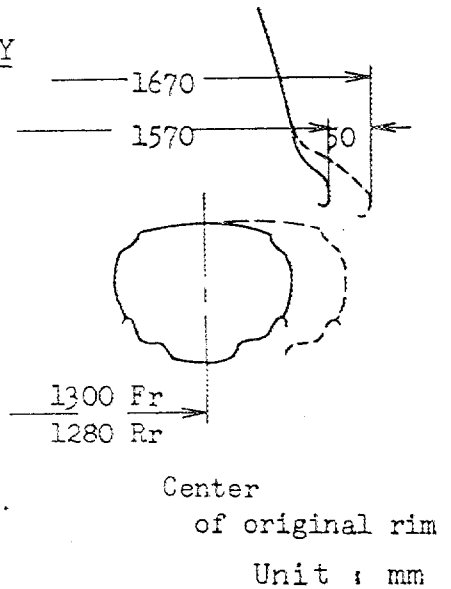
Wing extensions

NOT VALID FOR GROUP 1 ONLY



Front

Rear



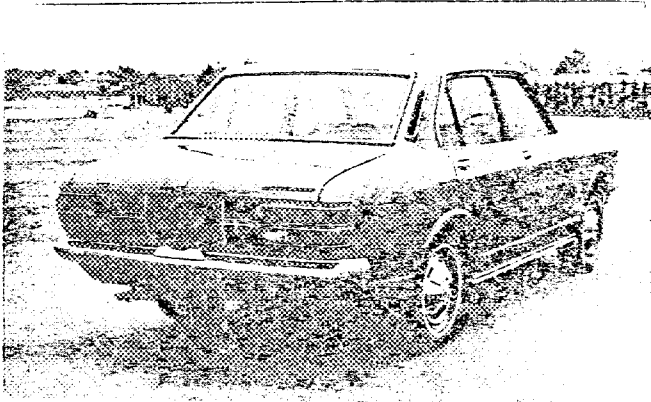
Make Toyota

Model RT82-S

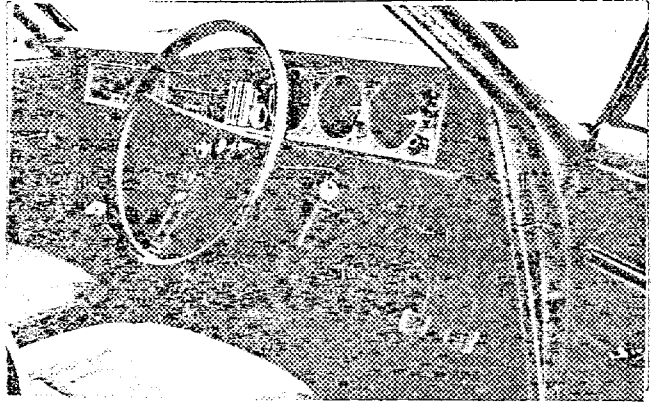
F.I.A. Rec. No.

Photograph

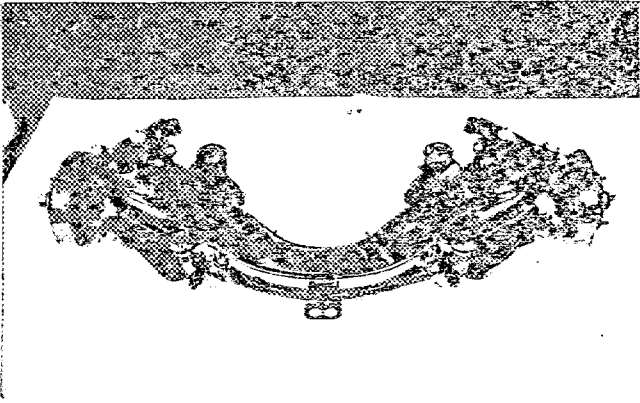
B, 3/4 view of car from rear



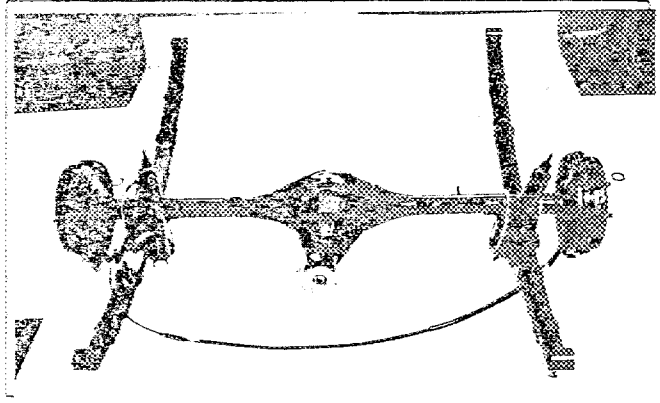
C, interior view of car through driver's door (open or removed) with dashboard



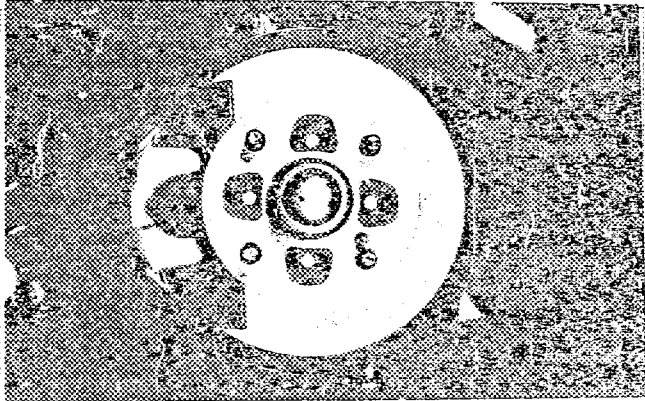
D, front axle complete, removed from car. Without wheels



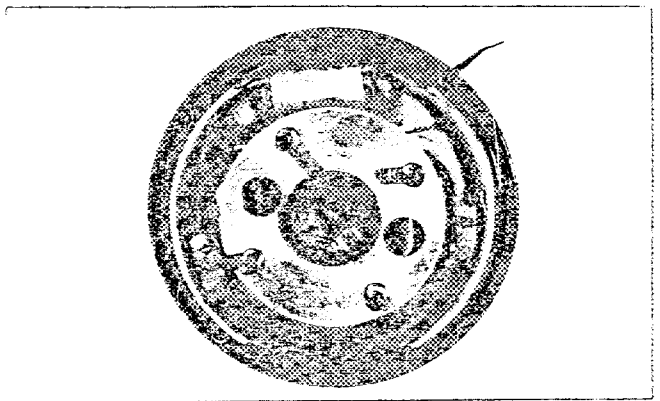
E, Rear axle complete without wheels, removed from car



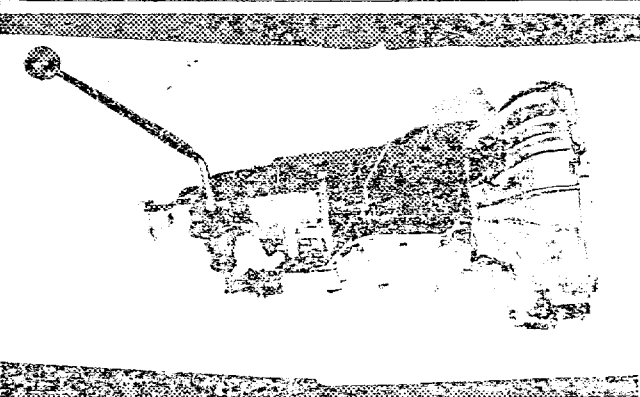
F, front brake, drum removed or disc with caliperist



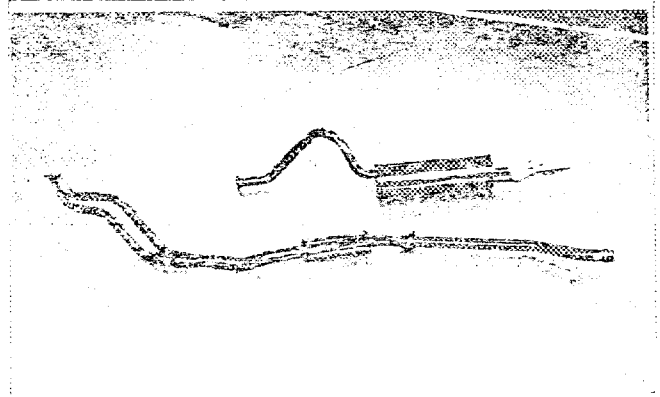
G, rear brake, drum removed or disc with caliperist



H, gran-bar, view from side

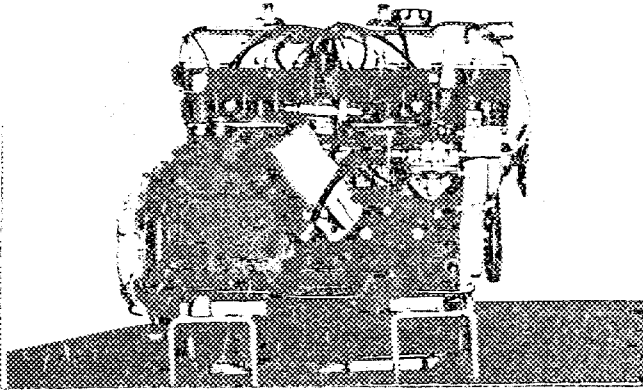


I, silencer + exhaust pipes after exhaust manifold

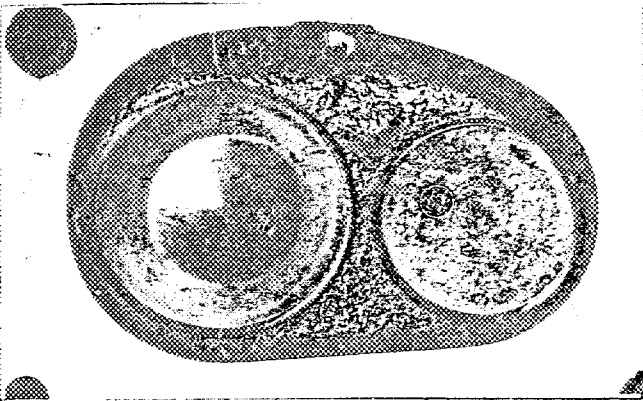


Make Toyota

engine unit out of car, from right. With clutch and accessories but without air filter nor gear-box



L, combustion chamber



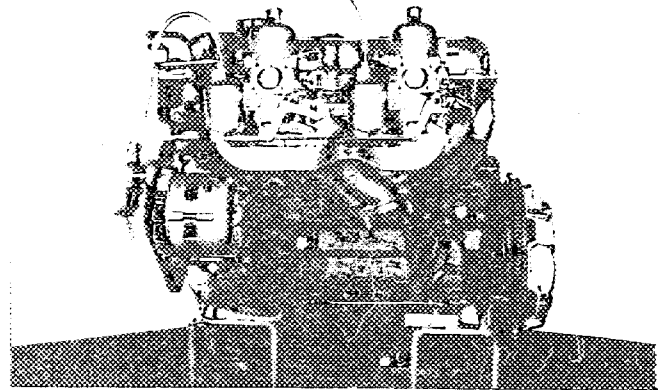
M, piston crown

Model RT82-S

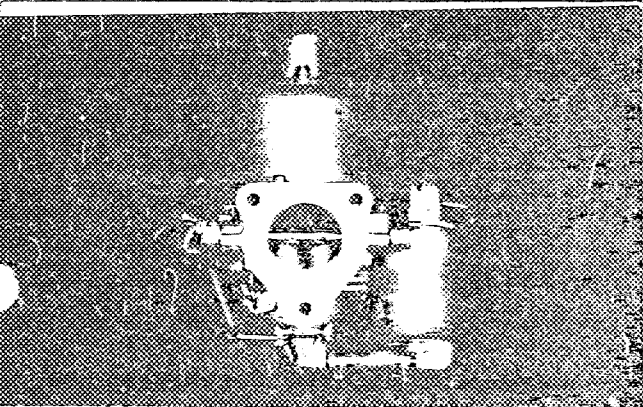
F.I.A. Rec. No

Photograph

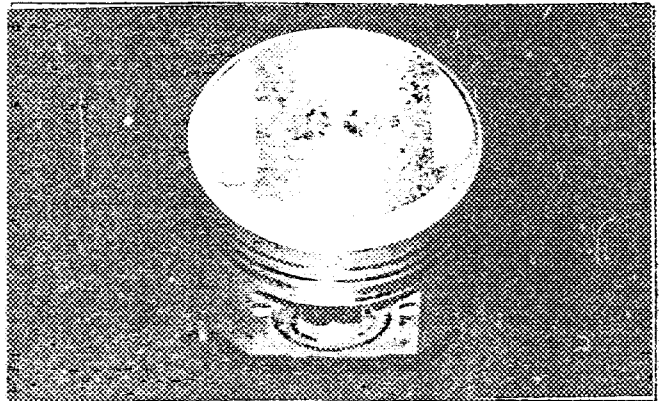
Engine unit out of car, from left. With clutch and accessories but without gear-box nor air filter.



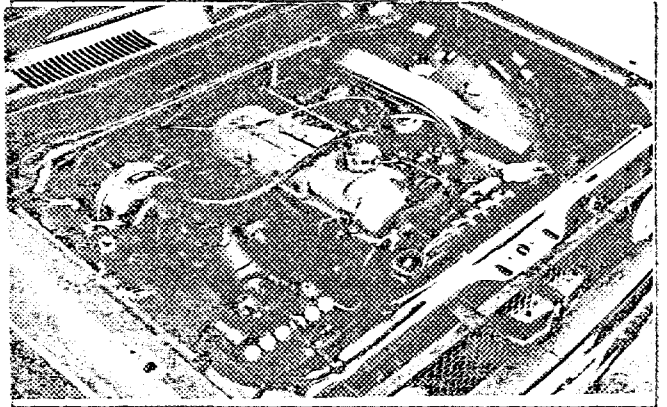
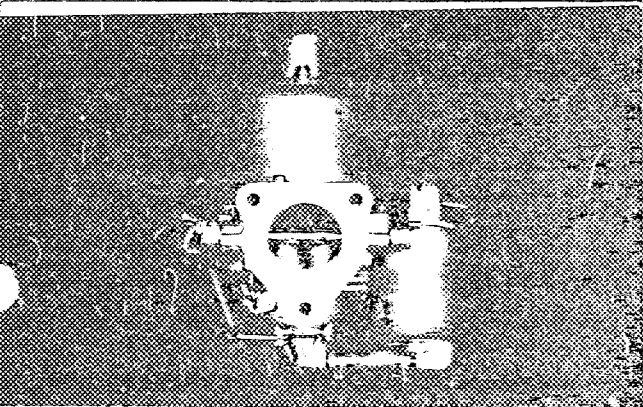
N, carburettor (view from side of manifold)



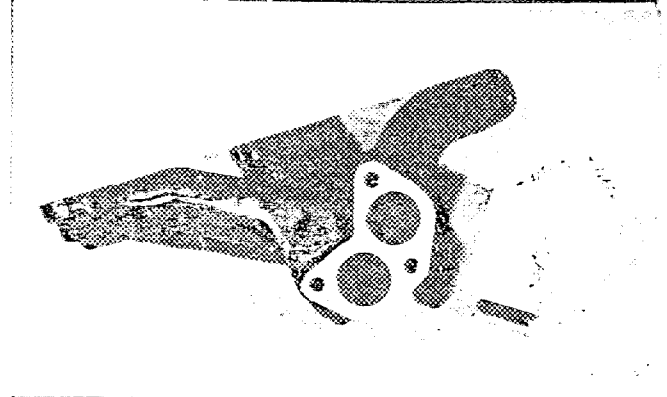
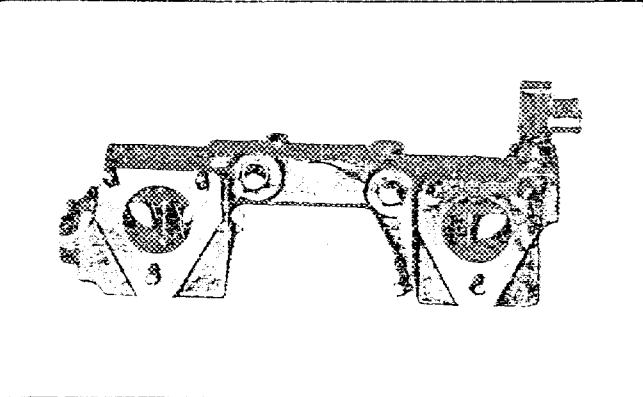
O, engine in car with all accessories, bonnet open or removed



P, inlet manifold

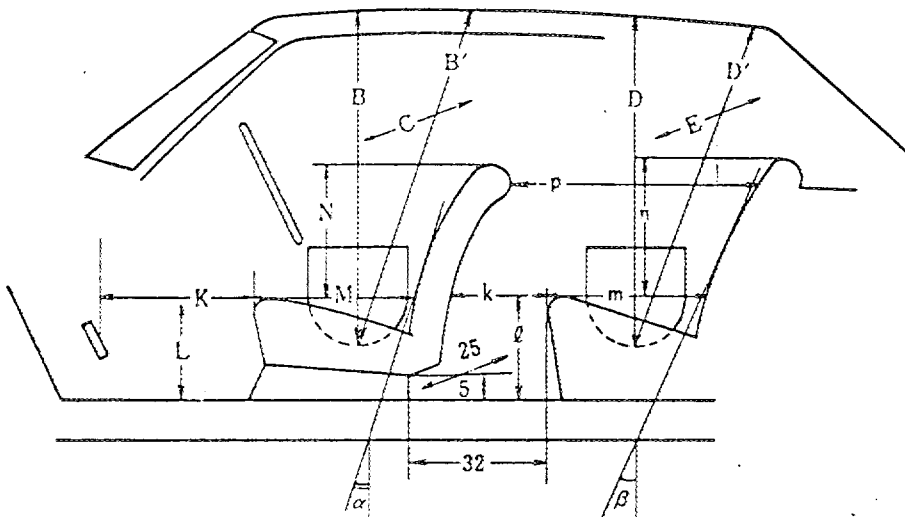


Q, exhaust manifold



DIMENSIONS OF INTERIOR
(Conform to Art. 253 b of Appendix J)

For four seaters :



Minimum Dimensions (cm)							
B	B'	α	C	D	D'	β	E
92	102	25°	130	96	96	25°	130

Minimum Dimensions (cm)										
L	ℓ	N	m	N	n	k+m	p	k	k+l+m	K+L+M
29.5	32	51	48	45	46.5	66	64	18	98	123
0.9L = 26.55		0.85M = 43.35		0.8N = 36		0.8(k+m) = 52.8		(15)	(95)	(120)

TWO STROKE ENGINES

- 300. System of cylinder scavenging
- 301. Type of lubrication
- 302. Inlet ports, length measured around cylinder wall mm inches
- 303. Height inlet port mm in. 304. Area mm² sq. in.
- 305. Exhaust ports, length measured around cylinder wall mm inches
- 306. Height exhaust port mm in. 307. Area mm² sq. in.
- 308. Transfer port, length measured around cylinder wall mm inches
- 309. Height transfer port mm in. 310. Area mm² sq. in.
- 311. Piston ports, length measured around piston mm inches
- 312. Height piston port mm in. 313. Area mm² sq. in.
- 314. Method of precompression 315. Precompression cyl.: yes/no
- 316. Bore mm inches 317. Stroke mm inches
- 318. Distance from top of cyl. block to highest point of exhaust port : mm inches
- 319. Distance from top of cyl. block to lowest point of inlet port : mm inches
- 320. Distance from top of cyl. block to highest point of transfer port : mm inches
- 321. Drawing of cylinder ports.

330. Supercharging—state full details hereafter :

JAPAN AUTOMOBILE FEDERATION

Yasuharu Nanba

Yasuharu Nanba