

FEDERATION INTERNATIONALE DE L'AUTOMOBILE

Form of recognition in accordance with Appendix J to the International Sporting Code.

Manufacturer *DAF* Cylinder-capacity *1108.....cm3 ..67.61..in3*
 Model *55*
 Serial N° of chassis *5502* Manufacturer *DAF*
 engine *B110* Manufacturer
 Recognition is valid from *1st May '68* List *1968/6*

The manufacturing of the model described in this recognition form was started on *Sept....1967* and the minimum production of *5000* identical cars, in accordance with the specifications of this form was reached on *19 february 19 68*

Photograph A , 3/4 view of car from front



The vehicle described in this form has been subject to the following amendments :

<u>Variants</u>	<u>Normal evolution of the type</u>
on 19 .. rec.N° List	on 19 .. rec.N° List.....
n 19 .. rec.N° List	on ... 19 .. rec.N° List
on 19 .. rec.N° List	on 19 .. rec.N° List
on 19 .. rec.N° List.....	on 19 .. rec.N° List
on 19 .. rec.N° List	on 19 .. rec.N° List

Stamp and signature of the National Sporting Authority

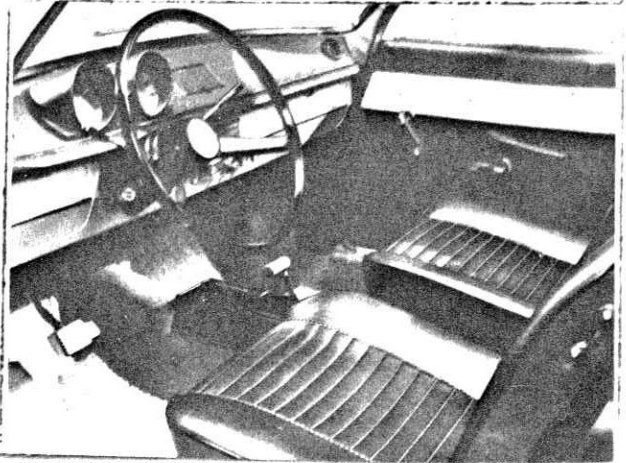
Stamp and signature of the F.I.A.



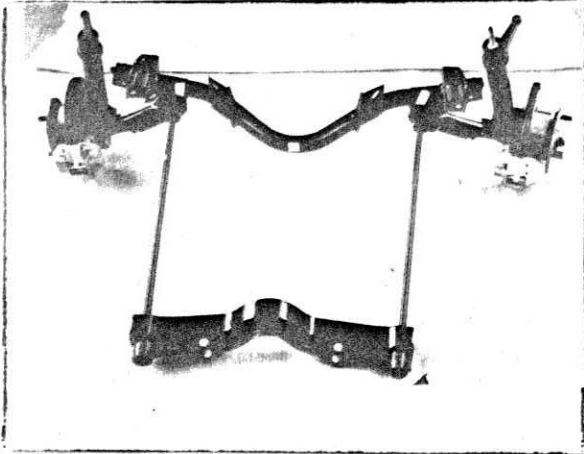
Photograph B , 3/4 view of the car from rear



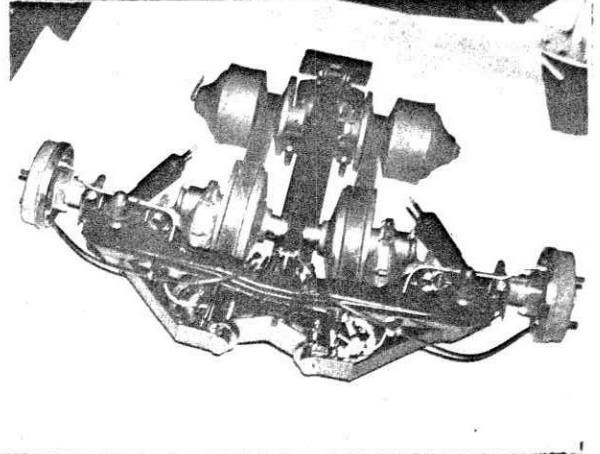
Photograph C , interior view of car through driver's door (open or removed)



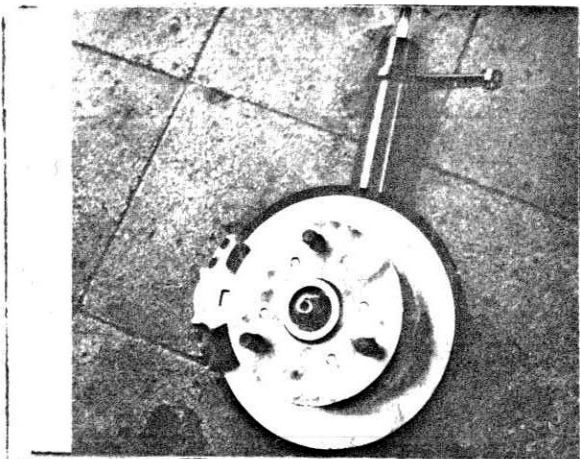
Photograph D, front axle complete, without wheels, removed from the car



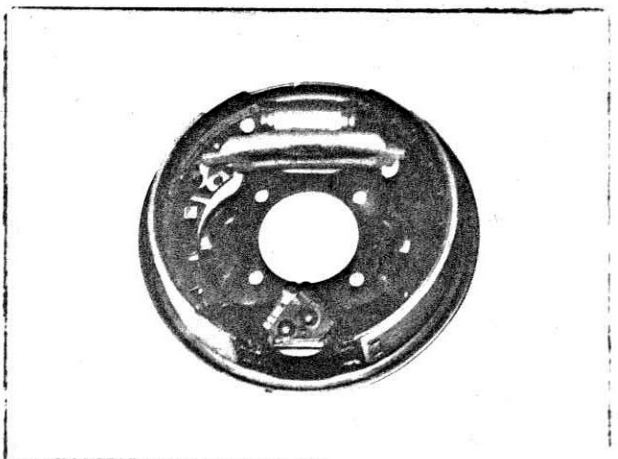
Photograph E, rear axle complete, without wheels, removed from the car.



Photograph F, front brake , drum removed.



Photograph G, rear brake, drum removed.

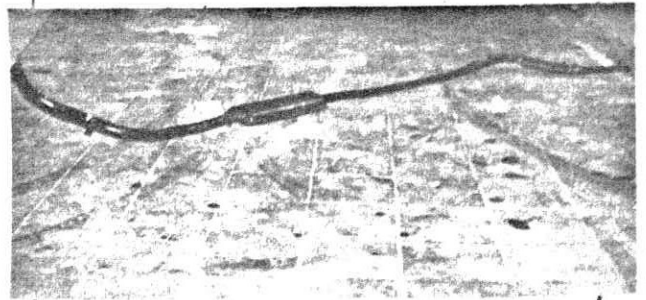


Photograph H

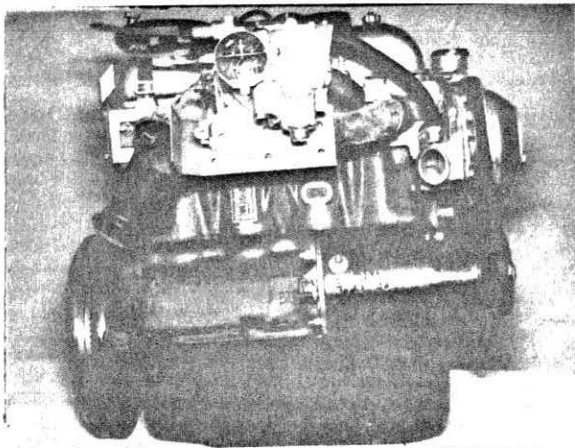
gear-box , view from side.

See Photograph E

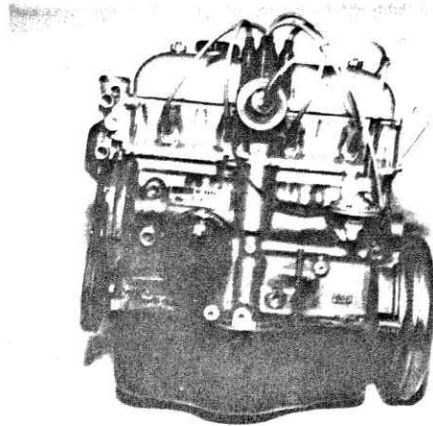
Photograph I



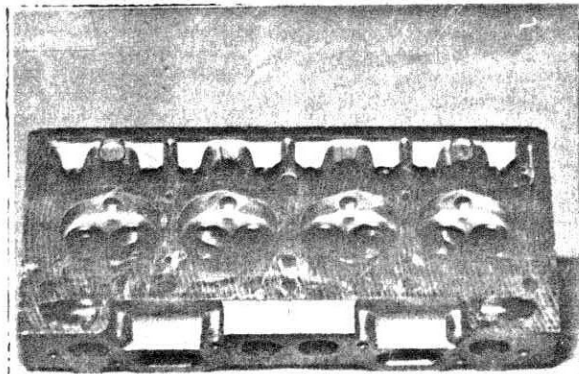
Photograph J



Photograph K



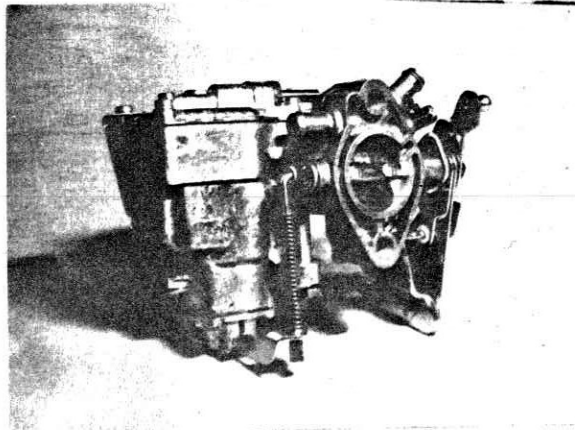
Photograph L



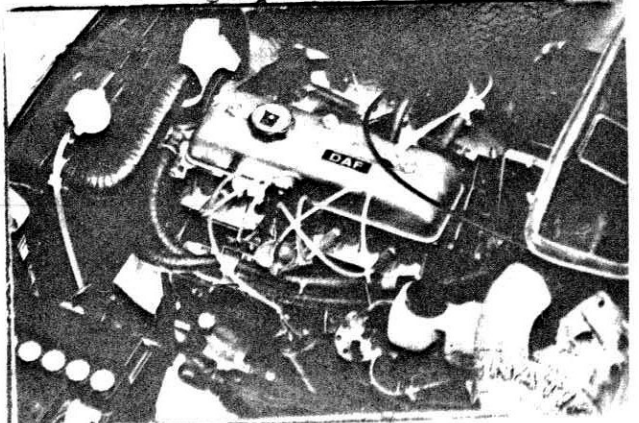
Photograph M



Photograph N

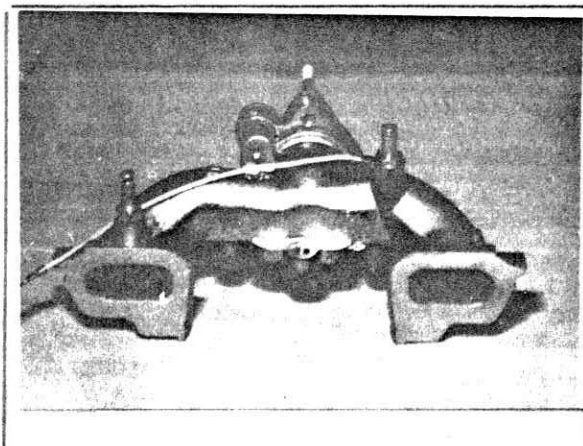


Photograph O



FEDERAL BUREAU OF INVESTIGATION
U.S. DEPARTMENT OF JUSTICE

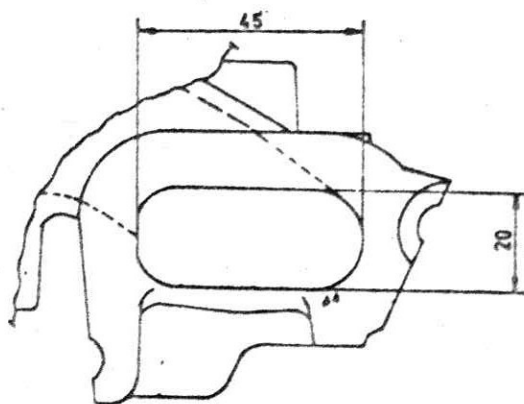
Photograph P



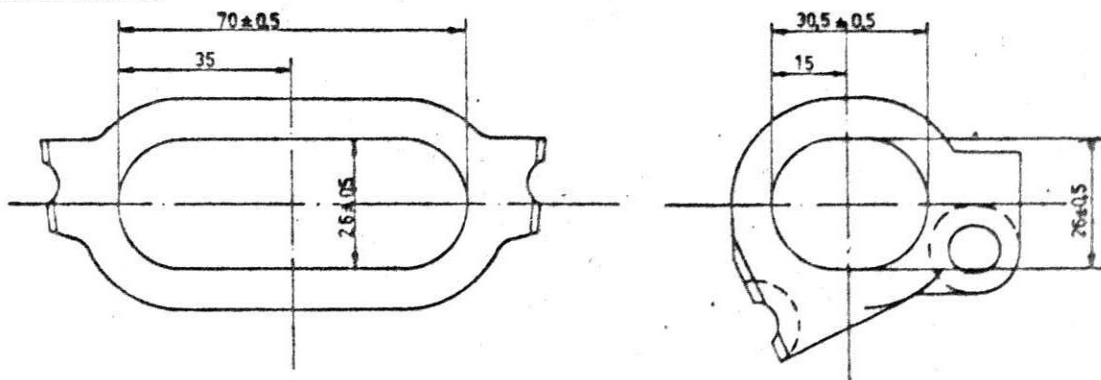
Photograph Q



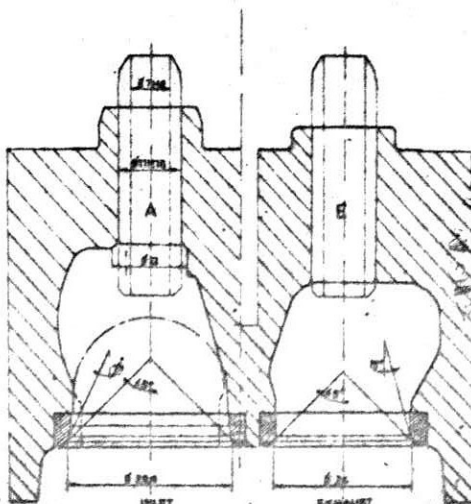
Drawing inlet manifold ports, side of cylinder-head. Indicate scale or dimensions.



Drawing exhaust manifold ports, side of cylinderhead. Indicate scale or dimensions.



Drawing exhaust and inlet ports of cylinder-head. Indicate scale or dimensions.



Make DAF Model 55 F.I.A. Rec. No

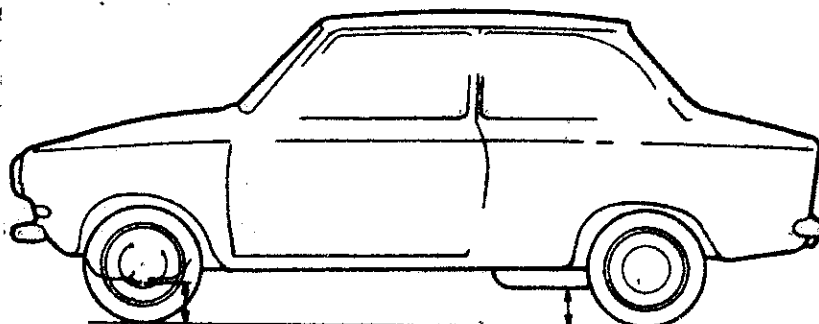
IMPORTANT - the underlined items must be stated in two measuring systems, one of which must be the metric system. See conversion table hereafter.

CAPACITIES AND DIMENSIONS

1. Wheelbase 2250 mm 88.58 inches
2. Front track (with standard tyres fitted) 1280 mm 50.39 inches*
3. Rear track (with standard tyres fitted) 1250 mm 49.21 inches*
4. Overall length of the car 388 cm 152.76 inches
5. Overall width of the car 154 cm 60.62 inches
6. Overall height of the car 138 cm 54.33 inches
7. Capacity of fuel tank (reserve included) 38 ltrs
10 Gallon US 8.4 Gallon Imp.
8. Seating capacity 4-5 pers.
9. Weight, total weight of the car with normal equipment, water, oil and spare wheel but without fuel nor repair tools :
740 kg 1632 lbs cwt

*) Difference hereafter Difference widths must

e mentioned different rim wheels concerned.



LOWEST PART OF SUMP
195mm

LOWEST PART VARIOMATIC COVER
195mm

CONVERSION TABLE

1 inch/pouce	- 2.54	cm	1 quart US	- 0.9464 ltrs
1 foot/pied	- 30.4794	cm	1 pint (pt)	- 0.568 ltrs
1 square inch/pouce carré	- 6.452	cm ²	1 gallon Imp.	- 4.546 ltrs
1 cubic inch/pouce cube	- 16.387	cm ³	1 gallon US	- 3.785 ltrs
1 pound/livre (lb)	- 453.593	gr.	1 hundred weight (cwt)	- 50.802 kg



Make

DAF

Model 55

F.I.A. Rec. N°

CHASSIS AND COACHWORK (Photographs A, B and C)

20. Chassis/body construction : ~~separate~~ / unitary construction

21. Unitary construction, material(s) sheet steel

Separate construction

22. Material(s) of chassis

23. Material(s) of coachwork

24. Number of doors 2 Material(s) sheet steel

25. Material(s) of bonnet steel

26. Material(s) of boot lid steel

27. Material(s) of rear-window glass securit

28. Material(s) of windscreen glass securit BS-I

29. Material(s) of front-door windows glass securit

30. Material(s) of rear-door windows

31. Sliding system of door windows winding

32. Material(s) of rear-quarter light glass securit

ACCESSORIES AND UPHOLSTERY

38. Interior heating : yes - ~~no~~ 39. Air-conditioning : yes - ~~no~~40. Ventilation : yes - ~~no~~

41. Front seats, type of upholstery P.V.C. upholstered bucket type seats

42. Weight of front seat(s), complete with supports and rails, out of the car :

12,5 kg 27,5 lbs

43. Rear seats, type of upholstery P.V.C.

44. Front bumper, material(s) stainless steel Weight 3,3 kg 7.3 lbs

45. Rear bumper, material(s) stainless steel Weight 3,2 kg 7.06 lbs

WHEELS

50. Type pressed steel disc (flat hump)

51. Weight (per wheel, without tyre) 5,4 kg 11.9 lbs

52. Method of attachment 3 nuts

53. Rim diameter 354,8 mm 13.97 inches54. Rim width 101,5 mm 4 inches Alt. 4.5" *55. Standard tyre size fitted, front 135SR14 rear 135SR14
135-14X/5.65-14X 135-14X/5.65-14X
145-14 145-14

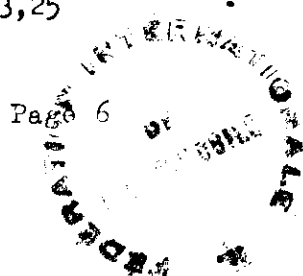
STEERING

60. Type Rack and Pinion

61. Servo-assistance : ~~yes~~ - no

62. Number of turns of steering wheel from lock to lock 3,25

63. In case of servo-assistance

* offset increases track by $\frac{1}{2}$ "

Make

DAF

Model 55

F.I.A. Rec. No

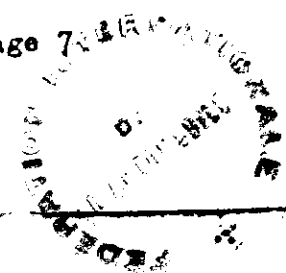
SUSPENSION

- 70. Front suspension (photogr. D), type Independent, longitudinal torsion bars
- 71. Type of spring torsion
- 72. Stabiliser (if fitted) yes
- 73. No of shock absorbers 2 74. Type telescopic double-acting hydraulic
- 78. Rear suspension (photogr. E), type Independent swing axles
- 79. Type of spring coil
- 80. Stabiliser (if fitted) no
- 81. No of shock absorbers 2 82. Type telescopic double-acting hydraulic

BRAKES (photographs F and G)

- 90. Method of operation hydraulic
- 91. Servo-assistance : ~~yes~~ - no 92. Type --
- 93. No of hydraulic master cylinders 1

	Front		Rear	
94. Number of cylinders per wheel	1		1	
95. Bore of wheel cylinder(s)	mm	in.	17,46 mm	0.687 in.
Disc brakes				
96. Inside diameter	mm	in.	200 mm	7.87 in.
97. Length of brake linings	mm	in.	196 mm	7.72 in.
98. Width of brake linings	mm	in.	40 mm	1.57 in.
99. No of shoes per brake			2	
100. Total area per brake	mm ²	in ²	157 mm ²	24.34 in ²
Disc brakes				
101. Outside diameter	248 mm	9.75 in.	mm	in.
102. Length of brake linings	55 mm	2.17 in.	mm	in.
103. Width of brake linings	37 mm	1.46 in.	mm	in.
104. No of pads per brake	2			
105. Total area per brake	2x2000 mm ²	6.2 in ²	mm ²	in ²



Make

DAF

Model 55

F.I.A. Rec. N°

ENGINE (photographs J and K)

130. Cycle 4 131. N° of cylinders 4

132. Cylinder arrangement in line

133. Bore 70 mm 2.756 in. 134. Stroke 72 mm 2.835 in.

135. Capacity per cylinder 277 cm³ 16.9 cu. in.

136. Total cylinder-capacity 1108 cm³ 67.61 cu. in.

137. Material(s) of cylinder-block cast iron

138. Material(s) of sleeves (if fitted) steel

139. Cylinder-head, material(s) aluminium N° fitted 1

140. Number of inlet ports 4 141. Number of exhaust ports 4

142. Compression ratio 8,5:1

143. Volume of one combustion chamber 31,17 cm³ 1.963 cu. in.

144. Piston, material(s) aluminium 145. N° of rings 3

146. Distance from gudgeon pin centre line to highest point of piston crown :
40 mm 1.57 inches

147. Crankshaft : moulded / ~~stamped~~ 148. Type of crankshaft 4 throw

149. Number of crankshaft main bearings 5

150. System of lubrication : ~~any~~ / oil in sump

151. Capacity, lubricant 2,5 ltrs 4.40 pints 2.64 quarts US

152. Oil cooler : ~~yes~~ / no 153. Method of engine cooling water

154. Capacity of cooling system 4,8 ltrs 8.45 pints 5.07 quarts US

155. Cooling fan (if fitted), dia. 28 cm 11.02 inches

156. Number of blades of cooling fan 6

Bearings

157. Crankshaft main, type plain Dia. 46 mm 1.811 in.

158. Connecting rod big end, type plain Dia. 43,98mm 1.731 in.

Weights

159. Flywheel (clean) 7,83^{+0,01} kg lbs

160. Flywheel with clutch (all turning parts) 12,796 kg lbs

161. Crankshaft 8,2^{+0,2} kg lbs 162. Connecting rod 0,46^{+0,03} kg lbs

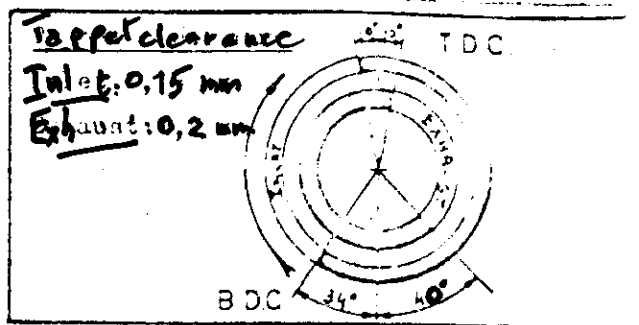
163. Piston with rings and pin 0,36^{+0,01} kg lbs



Make DAF model 55

FOUR STROKE ENGINES

- 170. N° of camshafts 1
- 171. Location LH side
- 172. Type of camshaft drive chain driven engineblock
- 173. Type of valve operation push-rod



INLET (see page 4)*

- 180. Material(s) of inlet manifold aluminium
- 181. Diameter of valves 31 mm 1.22 inches
- 182. Max. valve lift 7,15 mm 0.281 inches
- 183. N° of valve springs 1
- 184. Type of spring coil
- 185. N° of valves per cylinder 1
- 186. Tappet clearance for checking timing (cold) 0,15 mm .0059 inches
- 187. Valves open at (with tolerance for tappet clearance indicated) }
- 188. Valves close at (with tolerance for tappet clearance indicated) }
- 189. Degrees of crankshaft rotation from zero to - } see diagram
 - maximum valve lift 3/4 maximum valve lift
- 190. Air filter, type dry

EXHAUST (see page 4)

- 195. Material(s) of exhaust manifold cast iron
- 196. Diameter of valves 26,8 mm 1.06 inches
- 197. Max. valve lift 7,09 mm 0.280 inches
- 198. N° of valve springs 1
- 199. Type of spring coil
- 200. N° of valves per cylinder 1
- 201. Tappet clearance for checking timing (cold) 0,20 mm .0079 inches
- 202. Valves open at (with tolerance for tappet clearance indicated) }
- 203. Valves close at (with tolerance for tappet clearance indicated) }
- 204. Degrees of crankshaft rotation from zero to - } see diagram
 - maximum valve lift 3/4 maximum valve lift

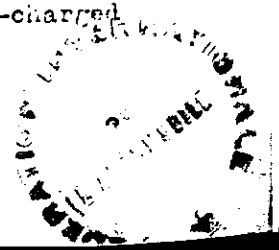
CARBURETION (photograph N)

- 210. N° of carburettors fitted 1
- 211. Type horizontal
- 212. Make Solex
- 213. Model 32 EESA
- 214. Flange hole diameter of exit port(s) of carburettor 32 mm 1.26 in.
- 215. Minimum diameter of air-passage 26 mm 1.02 in.

FUEL INJECTION (if fitted)

- 220. Make of pump
- 221. N° of plungers
- 222. Model or type of pump
- 223. Total n° of injectors
- 224. Location of injectors

*) For additional information concerning two-stroke engines and super-charged engines see page 13.



Make

DAF

Model

55

F.I.A. Rec. N°

ENGINE ACCESSORIES

230. Fuel pump : mechanical ~~and xxxxxxxxxx~~ 231. N° fitted 1
 232. Type of ignition system coil 233. N° of distributors 1
 234. N° of ignition coils 1 235. N° of spark plugs per cylinder 1
 236. Generator, number fitted 1 237. Method of drive belt
 238. Voltage of generator 12 volts 239. Battery, number 1
 240. Location under bonnet
 241. Voltage of battery 12 volts

ENGINE AND CAR PERFORMANCES (as declared by manufacturer in catalogue)

250. Max. engine output 45 (type of horsepower: DIN) at 5000 rpm.
 251. Maximum rpm 5500 output at that figure
 252. Maximum torque 8,0 mkg at 2800 rpm
 253. Maximum speed of the car 136 km/hour 85 miles/hour



Make

DAF

Model

55

F.I.A. Rec. N°

DRIVE TRAIN

CLUTCH

- 260. Type of clutch centrifugal 261. N° of ~~plates~~ shoes 8
- 262. Dia. of clutch plates om inches
- 263. Dia. of linings, inside om in. outside om in.
- 264. Method of operating clutch automatic

GEAR BOX (photograph H)

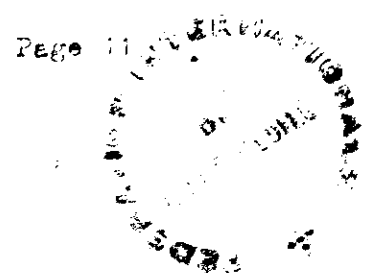
- 270. Manual type, make type
- 271. N° of gear-box ratios forward 272. Synchronized forward ratios
- 273. Location of gear-shift
- 274. Automatic, make DAF type VARIOMATIC
- 275. N° of forward ratios 276. Location of gear-shift on tunnel

277.	Manual		Automatic		Alternative manual/automatic			
	Ratio	N° teeth	Ratio	N° teeth	Ratio	N° teeth	Ratio	N° teeth
1			infinite					
2			variable					
3			between					
4			14.87:1					
5			and					
6			3.7:1					
			(final drive					
			included)					
reverse								

- 278. Overdrive, type
- 279. Forward gears on which overdrive can be selected
- 280. Overdrive ratio

FINAL DRIVE

- 290. Type of final drive integral part of complete VARIOMATIC transmission
- 291. Type of differential
- 292. Type of limited slip differential (if fitted)
- 293. Final drive ratio
- Number of teeth



Optional equipment affecting preceding information

Group II only

- sump guard
- additional fuel tank 20 L.
- Triplex glass windscreen - *groupe 1*
- Alternator - *group 1*



F.I.A. - Homologation N° ... 5228 ...

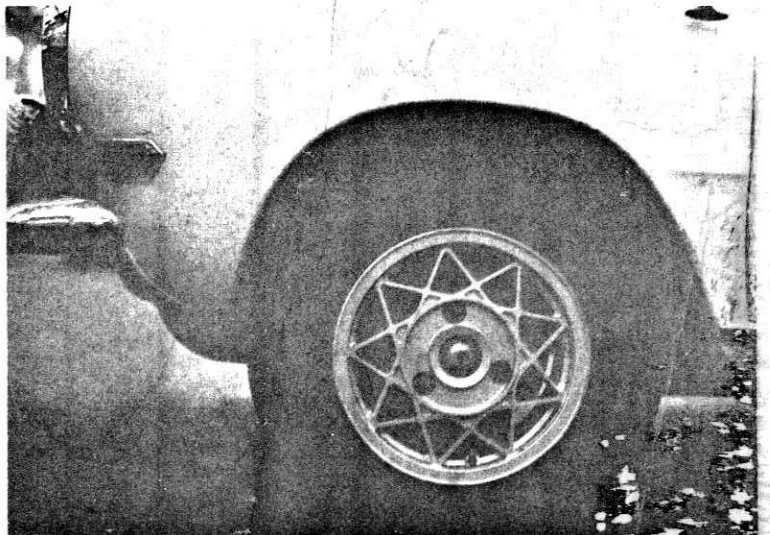
FÉDÉRATION INTERNATIONALE DE L'AUTOMOBILE

FICHE D'EXTENSION D'HOMOLOGATION
CONFORME A L'ANNEXE J DU CODE SPORTIF INTERNATIONAL

Marque ... DAF ... Modèle .. DAF 55 ..
 Numéros de série inaugurant les modifications décrites :
 Châssis/Carrosserie .. 5502 ..
 Moteur .. B 110 ..
 Date de sortie des premiers véhicules construits avec les modifications : 15 mars ... 19.. 8.
 Dénomination commerciale après application des modifications : .. DAF 55 ..
 Cette extension d'homologation doit être considérée comme : variante - évolution normale du type.
 of DAF 55 group 2
 L'homologation est valable du ... 14 May ... 19. 68 . Liste .. 1968/6 ...

Descriptions des modifications :

light alloy casted wheels
dimension 13" x 5" with tyres 165 x 13.
increasing track fore and aft with 12 mm.
Weight of wheel 4.5 kg



Signature et cachet
de l'Autorité Sportive Nationale :

Signature et cachet de la F.I.A. :

Hubert
 FÉDÉRATION INTERNATIONALE DE L'AUTOMOBILE
 COMMISSION SPORTIVE INTERNATIONALE

FÉDÉRATION INTERNATIONALE DE L'AUTOMOBILE

FICHE D'EXTENSION D'HOMOLOGATION
CONFORME A L'ANNEXE 3 DU CODE SPORTIF INTERNATIONAL

Marque Modele **Daf 55**

Numeros de serie inaugurant les modifications decrites Chassis/Carrosserie .. **5502**

Moteur **B 110**

Date de sortie des premiers vehicules construits avec les modifications : **1 febr.** 19. **69**

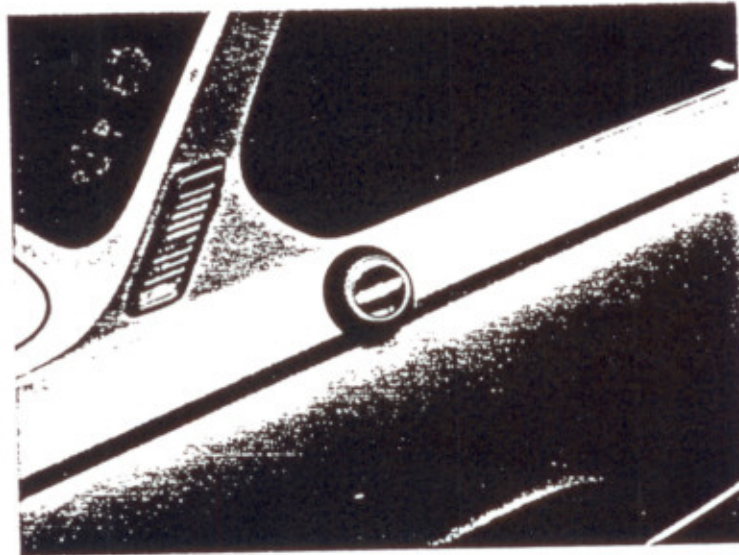
Denomination commerciale apres application des modifications : **Daf 55**

Cette extension d'homologation doit etre consideree comme : variante - evolution normale du type.

L'homologation est valable du **1/4** | 19. **69** Liste ~~.....~~ **69/2**

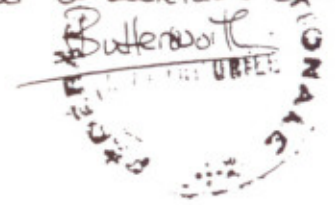
Descriptions des modifications : **Groupe II**

**Additional fuel tank as mentioned on list of optional equipment (20 l)
replaced by fuel tank of 35 litres with external filter cap.**



Signature et cachet
de l'Autorité Sportive Nationale :

Signature et cachet de la F.I.A. :
par le Secrétaire de la CSI



FÉDÉRATION INTERNATIONALE DE L'AUTOMOBILE

FICHE D'EXTENSION D'HOMOLOGATION
CONFORME A L'ANNEXE J DU CODE SPORTIF INTERNATIONAL

Marque **Daf** Modèle **Daf 55 estate car**

Numéros de série inaugurant les modifications décrites :
Châssis/Carrosserie ... **5512**

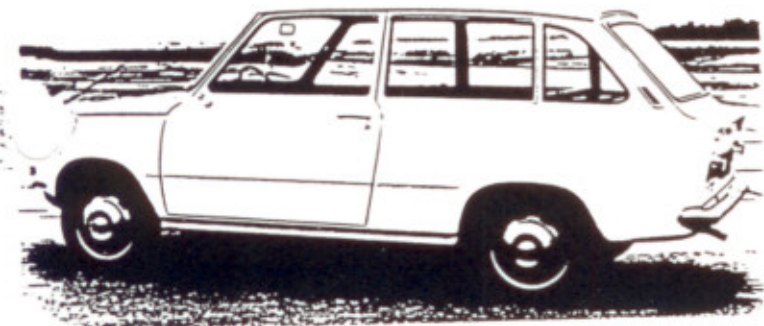
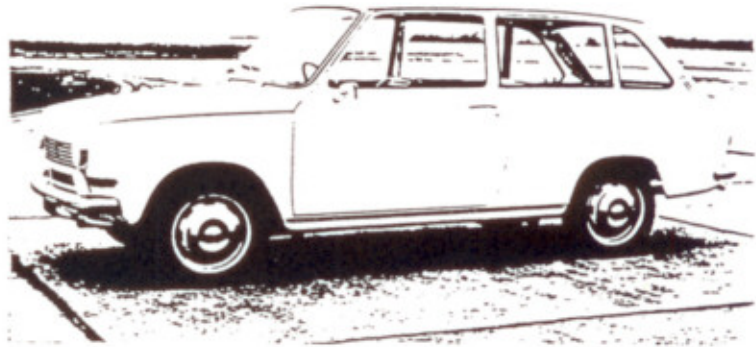
Date de sortie des premiers véhicules construits avec les modifications : **30 sept** .. 19.. **66**

Dénomination commerciale après application des modifications : ... **Daf 55 break**

Cette extension d'homologation doit être considérée comme : variante - évolution normale du type.

L'homologation est valable du ... *1/7/69* ... 19.. *69* ... Liste *1519*

Descriptions des modifications : **estate body based on 55 saloon**
No technical alterations, further details as Daf 55 saloon
(homologation 1519). Total weight of car 800 kg.



Signature et cachet
de l'Autorité Sportive Nationale :



Signature et cachet de la F.I.A. :



FIA 5225/15

FÉDÉRATION INTERNATIONALE DE L'AUTOMOBILE

REGLEMENT INTERNATIONAL D'HOMOLOGATION
INTERNATIONAL REGULATIONS FOR THE CONSTRUCTION OF MOTOR VEHICLES

Marque **Daf 55**

Numéro de série/manufacture des modifications **5502**

..... **B 110**

Date de sortie des premiers véhicules avec les modifications : **1 febr.** 19. **69**

Désignation comme telle après avoir appliqué les modifications **Daf 55**

Cette extension d'homologation doit être considérée comme « variante » évolution normale du type.

L'homologation est valable du **1/7/** 19. **69** Liste **19.69/5**

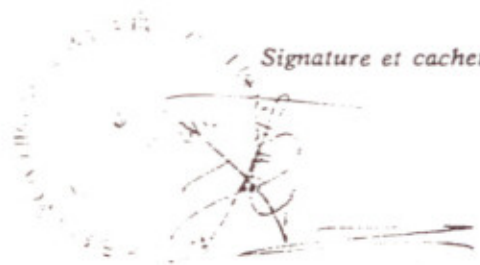
Descriptions des modifications : Group II only

Steering: optional reduction with number of turns of steeringwheel from lock to lock 2.5

Signature et cachet
de l'Autorité Sportive Nationale :



Signature et cachet de la F.I.A. :



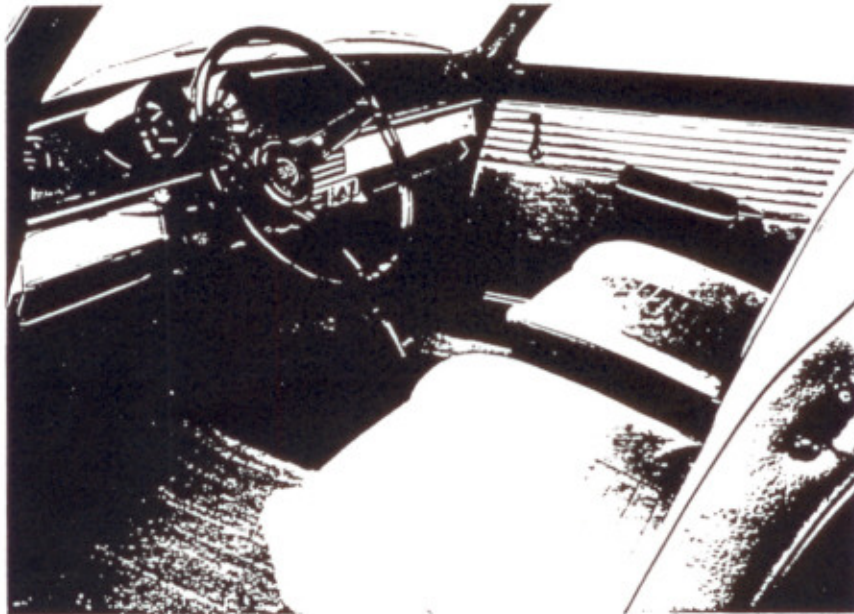
FÉDÉRATION INTERNATIONALE DE L'AUTOMOBILE

FICHE D'EXTENSION D'HOMOLOGATION
CONFORME A L'ANNEXE J DU CODE SPORTIF INTERNATIONAL

Marque DAF Modèle DAF 55
 Numéros de serie inaugurant les modifications decrites :
 Chassis/Carrosserie .. 5502
 Moteur B140
 Date de sortie des premiers véhicules construits avec les modifications : 1-9 19.69
 Dénomination commerciale après application des modifications : DAF 55
 Cette extension d'homologation doit être considérée comme : variante - évolution normale du type.

L'homologation est valable du 1/10 19.69 Liste 69/7

Descriptions des modifications :

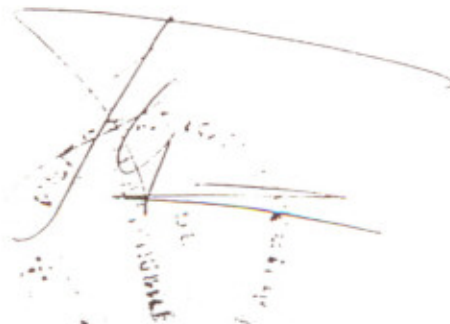


Handwritten signature:
 Jean-Louis
 Daniel
 Jean-Louis
 Schild

Signature et cachet de l'Autorité Sportive Nationale :



Signature et cachet de la F.I.A. :



FÉDÉRATION INTERNATIONALE DE L'AUTOMOBILE

FICHE D'EXTENSION D'HOMOLOGATION
CONFORME A L'ANNEXE J DU CODE SPORTIF INTERNATIONAL

Marque DAF Modèle DAF 55.....
Chassis/Carrosserie ..5502 ..
Numéros de série inaugurant les modifications décrites : Moteur B110.....

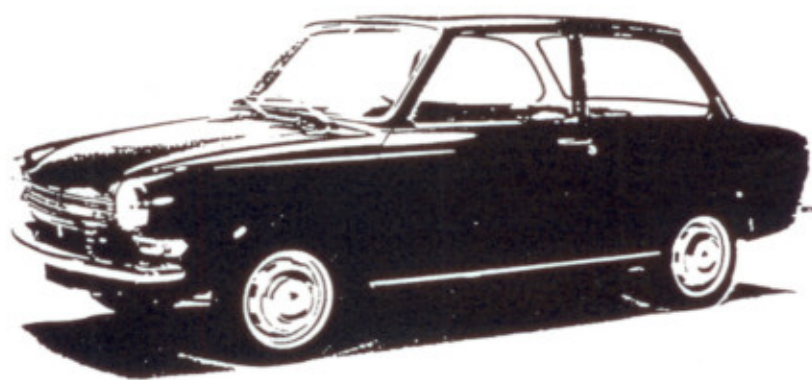
Date de sortie des premiers véhicules construits avec les modifications : 1+8..... 19..69.

Dénomination commerciale après application des modifications : DAF 55.....

Cette extension d'homologation doit être considérée comme : variante - évolution normale du type.

L'homologation est valable du 1/10 19.69. Liste .. 69/7 ..

Descriptions des modifications : "face lift" including small modifications of front of bodywork (grille) and interior (dashboard-steering wheel-door handles)
All other details as homologation 5228 (group 1) and 1519 (group 2)



Signature et cachet
de l'Autorité Sportive Nationale :



Signature et cachet de la F.I.A. :



FÉDÉRATION INTERNATIONALE DE L'AUTOMOBILE

FICHE D'EXTENSION D'HOMOLOGATION
CONFORME A L'ANNEXE J DU CODE SPORTIF INTERNATIONAL

Marque DAF Modèle . . . DAF 55T. - Coupé
 Numéros de série inaugurant les modifications décrites : Châssis/Carrosserie .. 5524
 Moteur B110
 Date de sortie des premiers véhicules construits avec les modifications : 1. Letz 1968
 Dénomination commerciale apres application des modifications : DAF 55T. - Coupé
 Cette extension d'homologation doit être considérée comme : variante - évolution normale du type.

L'homologation est valable du 19 Liste

Descriptions des modifications : Coupé (fast back) version of DAF 55 sedan
Dimensions differing from DAF 55 sedan :

height of car 1310 mm
 weight of car 750 kg
 number of seats 2+2

All other details as homologated in 5226 (group 1 and 1519 (group 2)



Signature et cachet
de l'Autorité Sportive Nationale :



Signature et cachet de la F.I.A. :



FÉDÉRATION INTERNATIONALE DE L'AUTOMOBILE

FICHE D'EXTENSION D'HOMOLOGATION
CONFORME A L'ANNEXE J DU CODE SPORTIF INTERNATIONAL

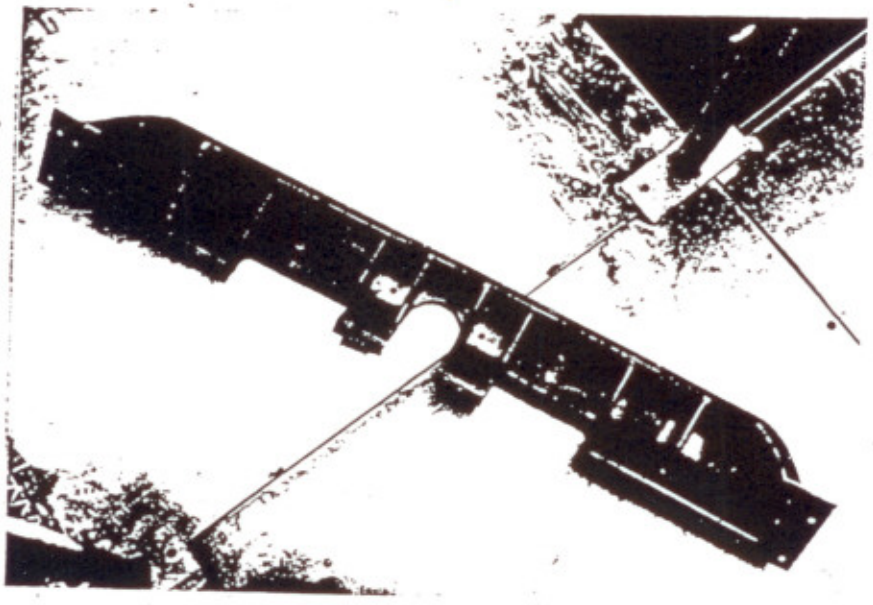
Marque DAF Modèle .. DAF 55 and DAF 55T
Châssis/Carrosserie .. 5502 - 5504
Numéros de série inaugurant les modifications décrites : Moteur B 11C
Date de sortie des premiers véhicules construits avec les modifications : 19...77
Dénomination commerciale après application des modifications : .. DAF 55 and DAF 55T
Cette extension d'homologation doit être considérée comme : variante ~~évolution normale~~ de ce type.

L'homologation est valable du 1/7.. 19.70.. Liste .. 70/77

Descriptions des modifications :

Protection for Variomatic transmission to be installed underneath the car in front of the rear mounted transmission.

Length = 1000 mm
Width = 120 mm
Weight = 4.5 kg



Signature et cachet
de l'Autorité Sportive Nationale :

Signature et cachet de la F.I.A. :

FÉDÉRATION INTERNATIONALE DE L'AUTOMOBIL

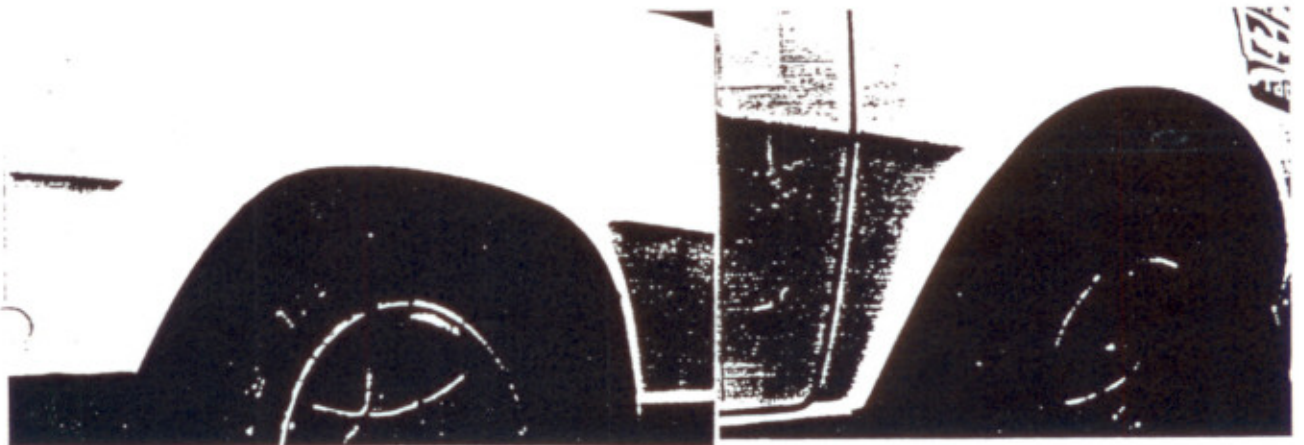
FICHE D'EXTENSION D'HOMOLOGATION
CONFORME A L'ANNEXE J DU CODE SPORTIF INTERNATIONAL

Marque ... DAF ... Modèle DAF 55 DAF 55C DAF
 Numéros de serie inaugurant les modifications decrites : Chassis/Carrosserie 5500-5512-55C
 Moteur ... E.11G ...
 Date de sortie des premiers vehicules construits avec les modifications : ... 1. sept. ...
 Denomination commerciale apres application des modifications : .. DAF 55 DAF 55C DAF 5
 Cette extension d'homologation doit être considerée comme : variante - ~~EXTENSION D'UNE~~ du typ

L'homologation est valable du ... 1/1 1971 ... Liste 71/1 ...

Descriptions des modifications :

Optional # Wing extension for front and rear wing, sheet metal



Signature et cachet
de l'Autorité Sportive Nationale :



Signature et cachet :



F.I.A. - Homologation N° 5228
10/3E

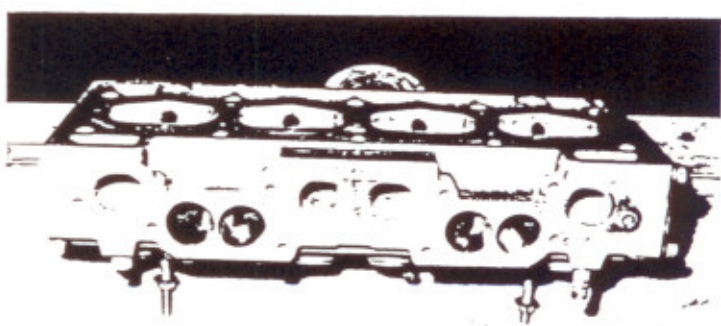
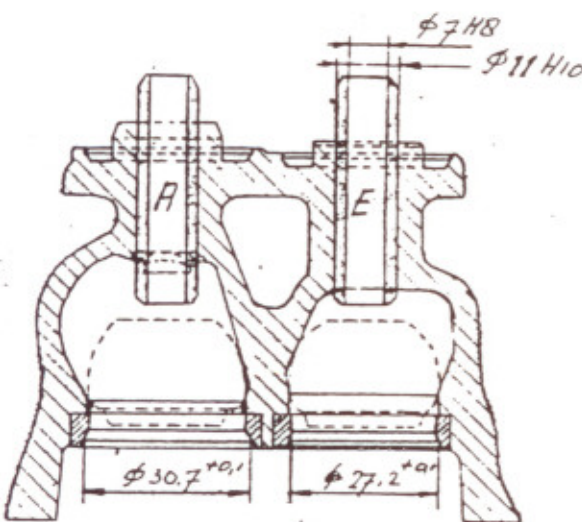
FÉDÉRATION INTERNATIONALE DE L'AUTOMOBILE

FICHE D'EXTENSION D'HOMOLOGATION
CONFORME A L'ANNEXE J DU CODE SPORTIF INTERNATIONAL

Marque DAF Modèle DAF 55 and derivates
Numéros de série inaugurant les modifications décrites : Châssis/Carrosserie 5502-5504-5512
..... Moteur B110
Date de sortie des premiers véhicules construits avec les modifications : .. 9 July 19..69..
Dénomination commerciale après application des modifications : .. DAF 55 - 55T - 55C
Cette extension d'homologation doit être considérée comme : ~~.....~~ - évolution normale du type.
L'homologation est valable du .. 1/1 19..71.. Liste .. 71/1

Descriptions des modifications :

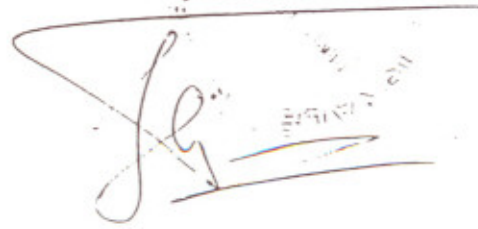
- Modification of the B110 engine cylinder head :
- 1). From siamese into separate inlet ~~.....~~ ports.
 - 2). Volume of one combustion chamber 32,18 cm³
- All other details as FIA-homologation 5228 and 1519.



Signature et cachet
de l'Autorité Sportive Nationale :



Signature et cachet de la F.I.A. :



F.I.A. - Homog. 12/19 ✓
G.R II

FÉDÉRATION INTERNATIONALE DE L'AUTOMOBILISME

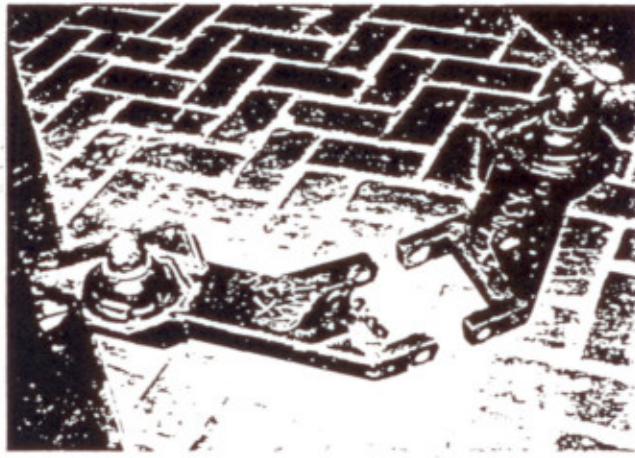
TICHE D'EXTENSION D'HOMOLOGATION
CONFORME A L'ANNEXE J DU CODE SPORTIF INTERNATIONA

Marque Modèle
Numéros de série inaugurant les modifications Chassis/Carrosserie
Date de sortie des premiers véhicules construits avec les modifications 19. 19. 19.
Dénomination commerciale après application des modifications
Cette extension d'homologation doit être considérée comme variante résolution normale d'usage.

L'homologation est valable du 1/1 1971 Date 71/1/1 A

Descriptions des modifications :

Optional equipment : Reinforced rear suspension interchangeable with original parts (group II)



Signature et cachet de l'Autorité Sportive Nationale :

Signature et cachet de la F.I.A. :

F.I.A. - Homologation N° 4001 / 13/10V
GR II

FÉDÉRATION INTERNATIONALE DE L'AUTOMOBILE

FICHE D'EXTENSION D'HOMOLOGATION
CONFORME A L'ANNEXE J DU CODE SPORTIF INTERNATIONAL

Marque DAF Modèle 247.55
Numéros de série inaugurant les modifications décrites : Chassis/Carrosserie 5502
Moteur 2.140
Date de sortie des premiers véhicules construits avec les modifications : Dec. 19.69..
Dénomination commerciale après application des modifications : ..
Cette extension d'homologation doit être considérée comme : variante - évolution normale du type
L'homologation est valable du 1/1 19.71.. Liste .. 71/1A ..

Descriptions des modifications :

Optional equipment : auxiliary bracket-engine compartment (group II)



Signature et cachet
de l'Autorité Sportive Nationale :



Signature et cachet de la F.I.A. :

