



MAKE FORD

MODEL 1968 MUSTANG 390

FIA REC # 5206

M  
390  
GI



Telephone: (203) 348-6233

Cable Address: "ACCUSFIA" Stamford, Conn.

AUTOMOBILE COMPETITION COMMITTEE FOR THE UNITED STATES, FIA, INC.

433 MAIN STREET, STAMFORD, CONN. 06901

Federation Internationale de l'Automobile  
FORM OF RECOGNITION

In accordance with Appendix "J" of the International Sporting Code

I N D E X

<u>ITEM</u>	<u>NUMBERS</u>	<u>PAGES</u>
Basic Data & Photo		1
Photos		2-3
Sketches		4
Capacities & Dimensions	1-9	5
Chassis & Bodywork	20-32	6
Accessories & Upholstery	38-45	6
Wheels	50-54	6
Steering	70-82	6-7
Brakes	90-105	7
Engine	130-203	8-10
Carburetion	210-216	10
Injection	220-225	10
Engine Accessories	230-241	11
Engine & Car Performance	250-253	11
Drive Train	260-293	11-12
Optional Equipment		13-14
Variants & Evolutions, if any		

CONVERSION TABLE:

1 inch / pouce	2.54 cm	
1 foot / pied	30.479 cm	
1 square inch / pouce carre	6.452 cm <sup>2</sup>	
1 cubic inch / pouce cube	16.387 cm <sup>3</sup>	
1 pound (lb.) / livre	453.593 gr	
1 pint (U.S.)	.473 ltrs	.833 pt. Imp.
1 quart (U.S.)	.946 ltrs	.833 qt. Imp.
1 gallon (U.S.)	3.785 ltrs	.833 gal. Imp.
1 pint (Imp.)	.568 ltrs	1.20 pt. U.S.
1 quart (Imp.)	1.136 ltrs	1.20 qt. U.S.
1 gallon (Imp.)	4.546 ltrs	1.20 gal. U.S.



AUTOMOBILE COMPETITION COMMITTEE  
FOR THE UNITED STATES, F.I.A., INC.

433 MAIN ST.  
STAMFORD, CONN. 06901  
(203) 348-6233

5206 M  
390  
GI

Federation Internationale de l'Automobile  
FORM OF RECOGNITION

In accordance with Appendix "J" of the International Sporting Code

Cylinder capacity 6384 cm<sup>3</sup> 389.5 in<sup>3</sup>

Manufacturer Ford Motor Company Model 1968 Mustang 390 Group 1

Serial # Chassis 8F01S100001 Manufacturer Ford

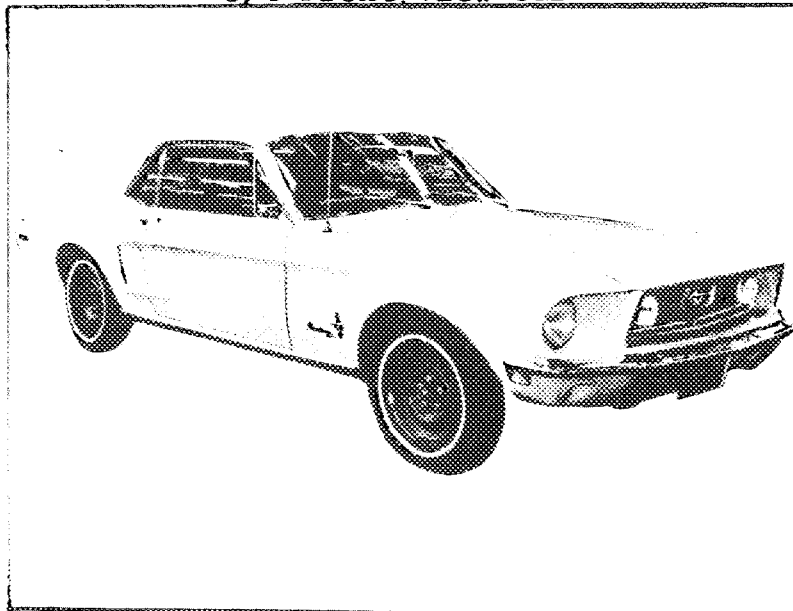
Serial # Engine None Manufacturer Ford

Recognition valid from \_\_\_\_\_ List \_\_\_\_\_

The manufacturing of the model described in this recognition form was started on August 23, 1967 and the minimum production of 10,000 identical cars, in accordance with the specifications of this form, was reached on November 30, 1967.

- (\*) need not be answered for Group II and III cars.
- (\*\*) only need to be answered for Group IV cars.

A 3/4 Front View Car \*\*



The vehicle described in this form has been subject to the following amendments:

Variants  
on 19 rec # \_\_\_\_\_ list \_\_\_\_\_  
on 19 rec # \_\_\_\_\_ list \_\_\_\_\_  
on 19 rec # \_\_\_\_\_ list \_\_\_\_\_

Normal evolution of the type  
on 19 rec # \_\_\_\_\_ list \_\_\_\_\_  
on 19 rec # \_\_\_\_\_ list \_\_\_\_\_  
on 19 rec # \_\_\_\_\_ list \_\_\_\_\_

Stamp/Signature of  
National Sporting Authority

JOHN V. OLIVEAU  
TECHNICAL DIRECTOR  
ACCUS, F.I.A., INC.

Stamp/Signature  
F.I.A.

1.1.1968

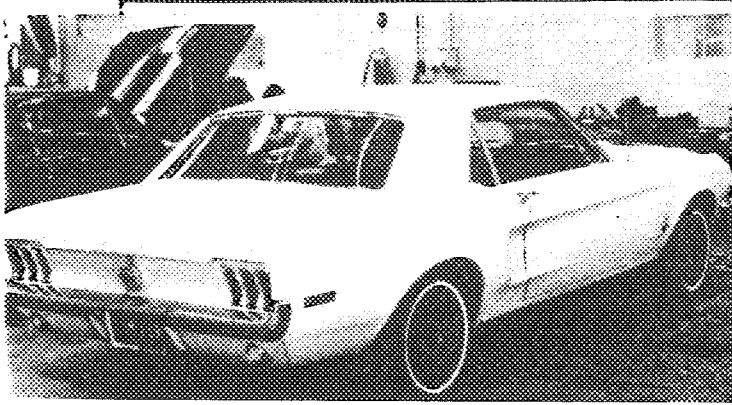
MAKE FORD

MODEL 1968 MUSTANG 390

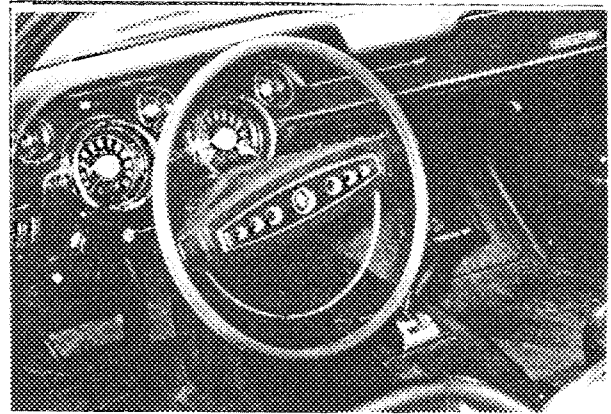
FIA REC #5206

M  
390  
GI

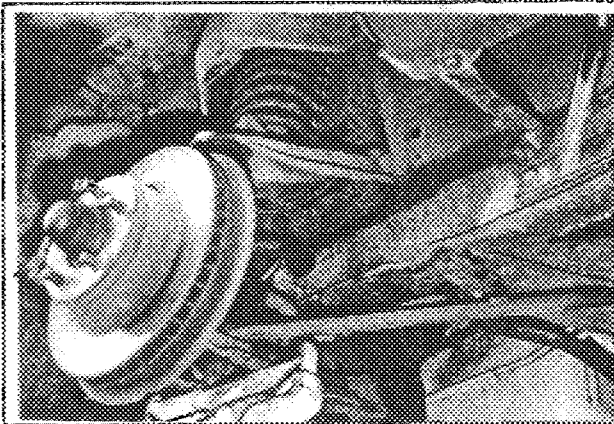
B 3/4 rear car (\*\*)



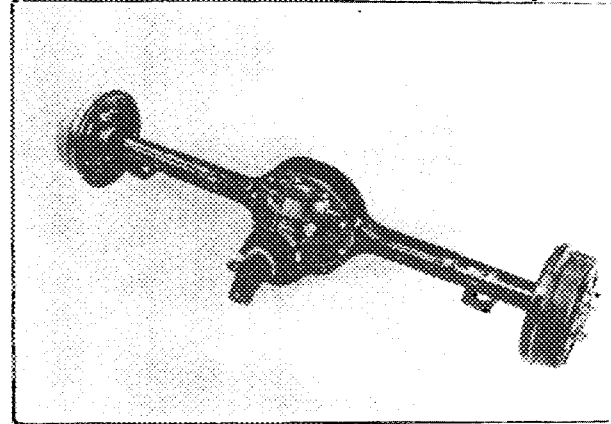
C interior-car (\*\*)



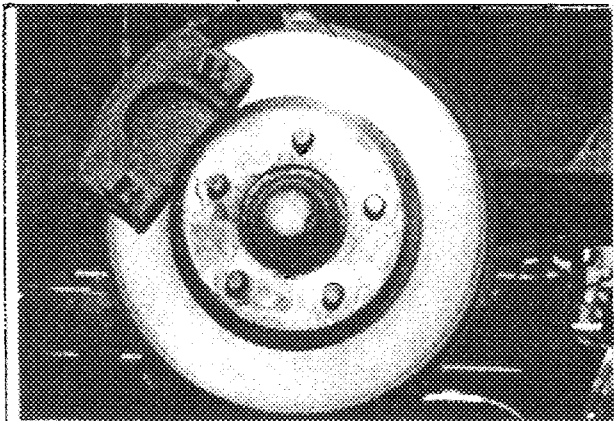
D front axle (\*\*)



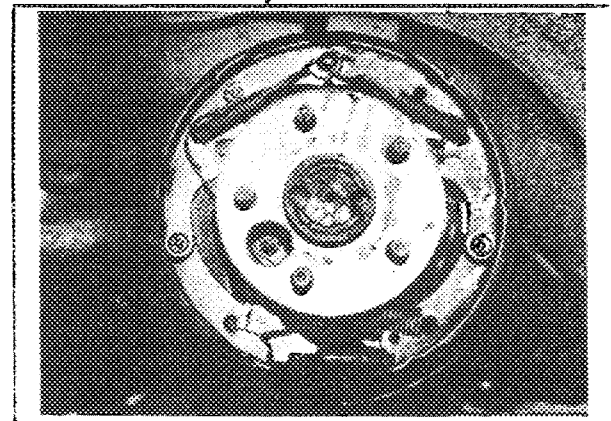
E rear axle (\*\*)



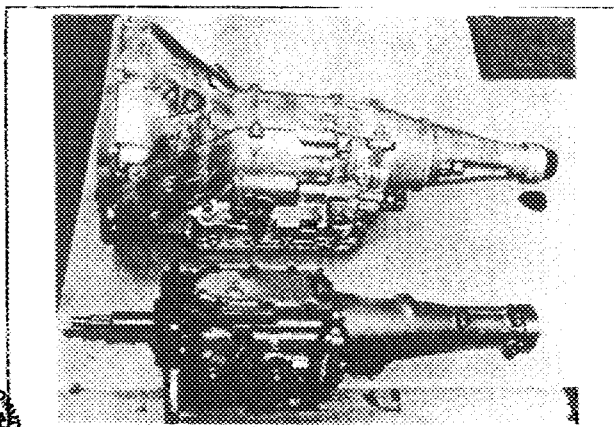
F brake, front (\*\*)



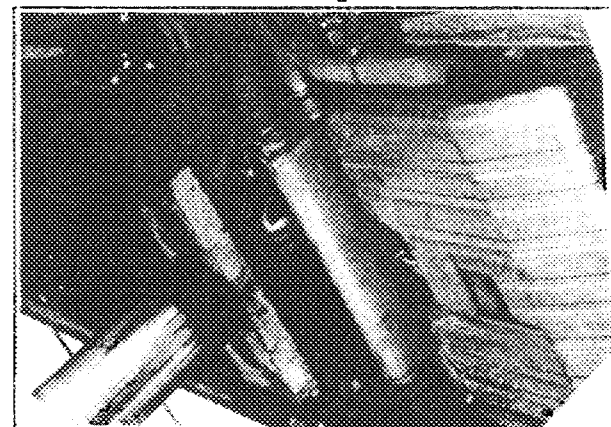
G brake, rear (\*\*)



H gear box (\*\*)



I exhaust system (\*)



TAMP

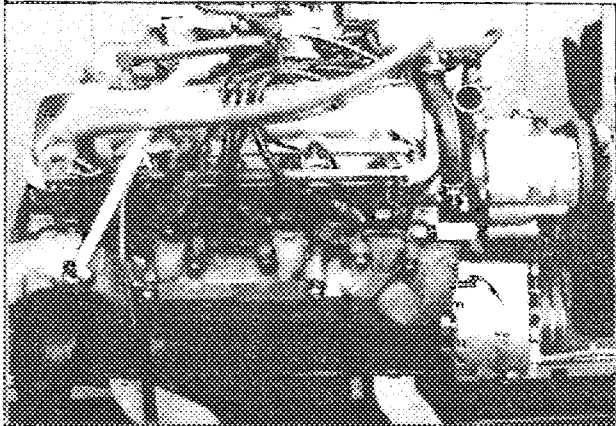
STAMP

MAKE FORD

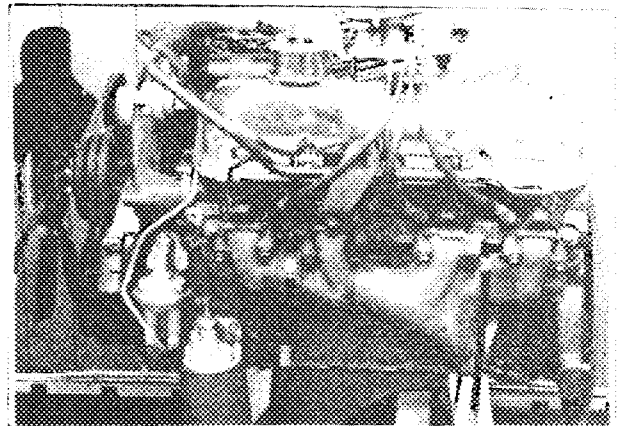
MODEL 1968 MUSTANG 390 FIA REC #5206

M  
390  
GI

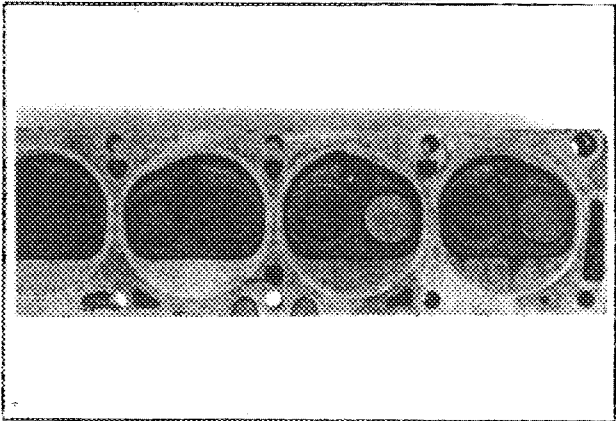
J ENGINE RIGHT (\*\*)



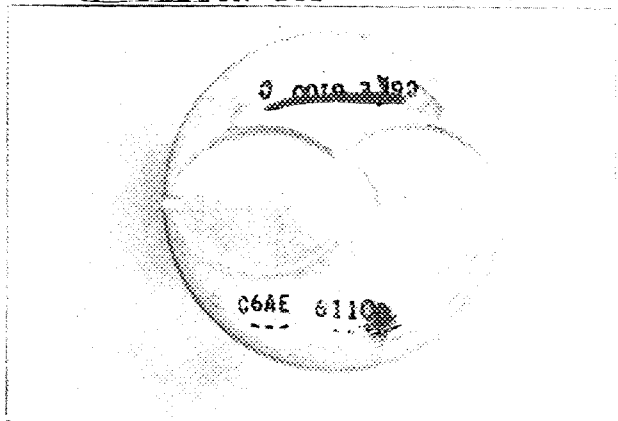
K ENGINE LEFT (\*\*)



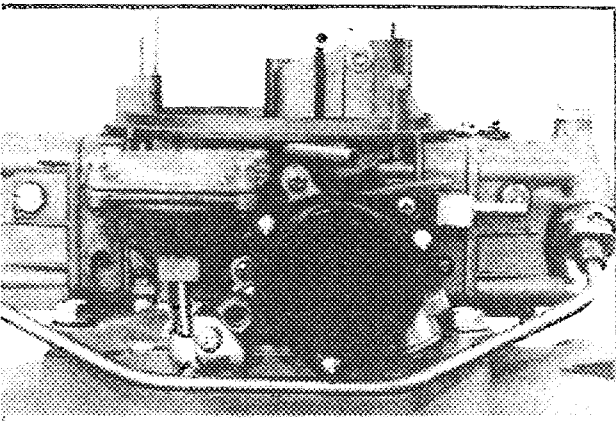
L COMBUSTION CHAMBER



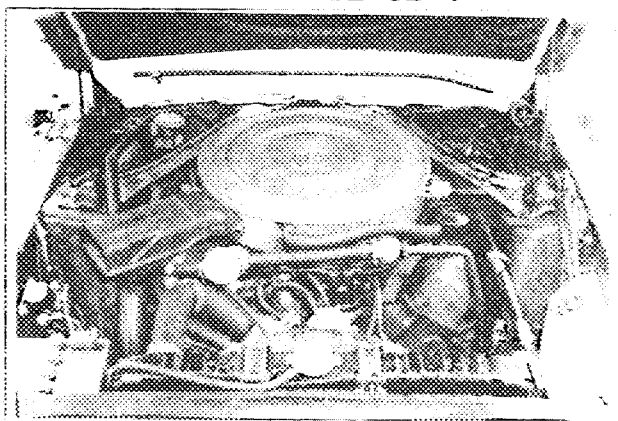
M PISTON TOP (\*)



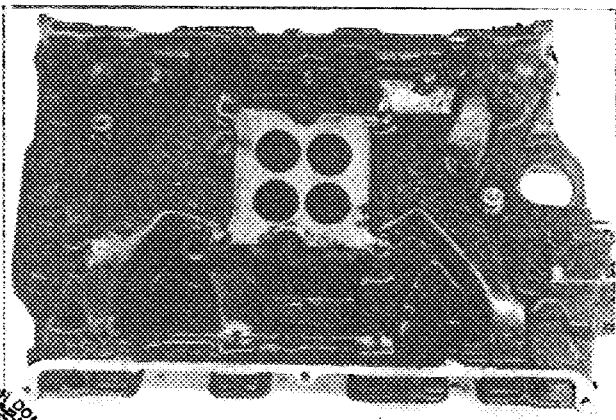
N CARBURETOR (\*)



O ENGINE IN PLACE (\*\*)



P MANIFOLD INLET



Q MANIFOLD EXHAUST



Strip out: ALL SKETCHES MUST INDICATE ACTUAL DIMENSIONS AND MANUFACTURER'S TOLERANCES.

TAMP

STAMP

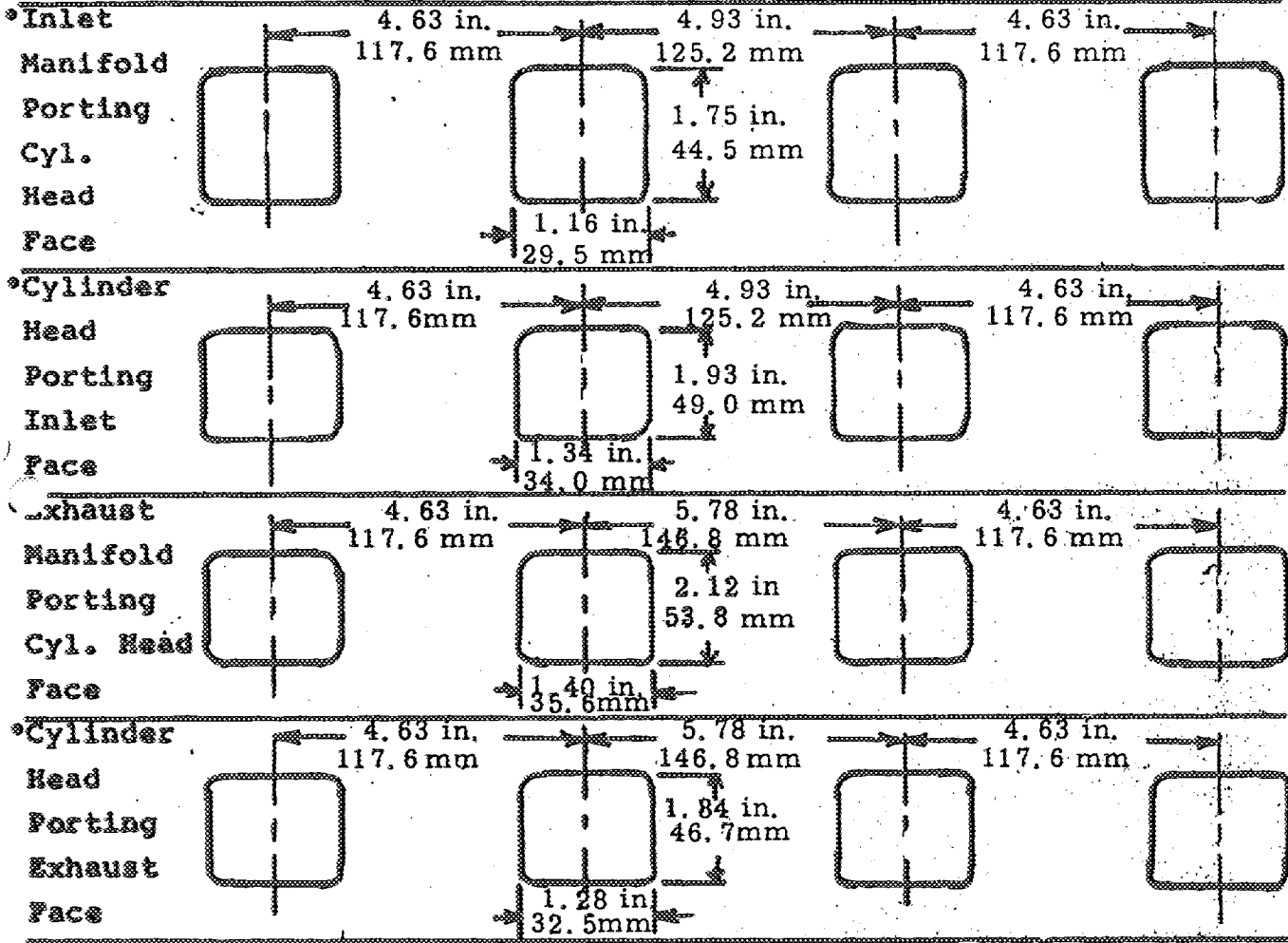


MAKE Ford

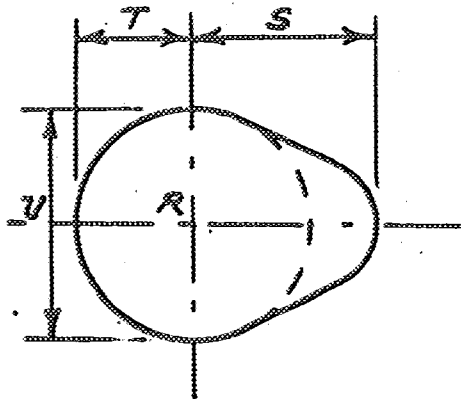
MODEL 1968 Mustang 390FIA REC #5206

M  
390  
G I

ALL SKETCHES MUST INDICATE ACTUAL DIMENSIONS AND MANUFACTURER'S TOLERANCES. + .04 in. or + 1.0 mm



CAM



Inlet cam

S=	26.0	mm	1.025	in.
T=	19.0	mm	.747	in.
U=	37.95	mm	1.494	in.

Exhaust cam

S=	26.2	mm	1.030	in.
T=	19.0	mm	.747	in.
U=	37.95	mm	1.494	in.

STAMP



MAKE FORD MODEL 1968 MUSTANG 390 FIA REC # 5206

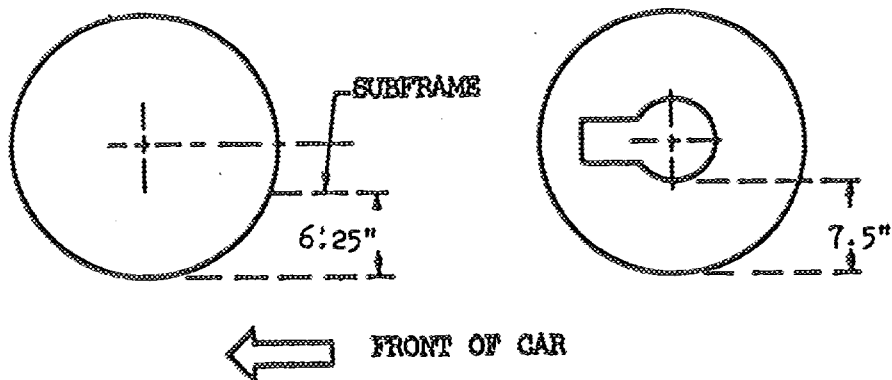
**IMPORTANT:** Questions 1 through 9 must be answered in two measuring systems, one of which must be the metric system.  
See conversion table at index.

**CAPACITIES & DIMENSIONS**

- (\*\*) 1. Wheelbase 2743.2 mm 108 in
  - (\*\*) 2. Front track 1483.4 mm 58.4 in + At 0° Camber-
  - (\*\*) 3. Rear track 1475.7 mm 58.1 in + 0" Toe-In.
- + Differences in track resulting from use of optional wheel and rim sizes must be stipulated on recognition\* See Note Below application forms.

Dimensional relationship between track (front and/or rear) and ground clearance resulting from use of optional wheel sizes shall also be stipulated and a sketch illustrating suspension reference points shall be shown below to establish the "reference chassis height." The reference chassis height dimension is to be used only when checking track and shall not affect eligibility of car in any manner.

Sketch, Ground Clearance: Dimensional Suspension & Chassis Reference Points"



\* NOTE: Geometry changes in front suspension will alter track.

- 4. Overall length of car 466.34 cm 183.6 in
- 5. Overall width of car 180.09 cm 70.9 in
- 6. Overall height of car 131.064 cm 51.6 in
- 7. Capacity of fuel tank (reserve included) 140.0/128.7/64.3 ltrs.  
37/34/17 gallons US gallons, Imp.
- 8. Seating capacity Four (4)
- (\*\*) 9. Weight - total weight of car with normal equipment, water, oil and spare wheel but without fuel or repair tools. 1331 kg 2946 lbs



STAMP

MAKE FORD

MODEL 1968 MUSTANG 390

FIA REC # 5206

M  
390  
GI

CHASSIS & BODYWORK - Photos A, B, C

- \*\* ) 20. Chassis/body construction - separate/unit construction
- \*\* ) 21. Unit construction - material/s Sheet Steel
- \*\* ) 22. Chassis - material/s Steel separate construction
- \*\* ) 23. Body - material/s Steel separate construction
- \*\* ) 24. Doors - number two (2) material/s Steel
- \*\* ) 25. Hood - material/s Steel
- \*\* ) 26. Trunk Lid - material/s Steel
- 27. Window, Rear - material/s Glass
- 28. Windshield - material/s Glass
- 29. Windows, front door - material/s Glass
- 30. Windows, rear door - material/s D.N.A.
- 31. Windows - actuating system Regulator
- 32. Window, rear quarter - material/s Glass

ACCESSORIES AND UPHOLSTERY

- 38. Heating, interior - yes no
- 39. Air conditioning - yes no
- 40. Ventilation - yes no
- \* ) 41. Seats, front - type of seat and upholstery Bucket-Vinyl
- 42. Seats, front - weight 14.8 kg 32.5 lbs Ea.  
(complete with supports & rails out of car)

CHECK: BENCH \_\_\_\_\_ BUCKET X CONSOLE INCLUDED \_\_\_\_\_

- 43. Seats, rear - type of seat and upholstery Bench-Vinyl
- 44. Bumper, front - material/s Steel kg 4.07 lbs 9 Weight
- 45. Bumper, rear - material/s Steel kg 6.33 lbs 14 Weight

WHEELS

- 50. Type Steel
- 51. Weight (per wheel, without tire) 8.9kg 19.5 lbs
- 52. Method of attachment Stud and nut (5)
- 53. Rim, diameter 356/381 mm 14/15 in
- 54. Rim, width 152/152 mm 6/6 in

STEERING

- 60. Type Recirculating Ball and Nut
- 61. Servo assistance No
- 62. Number of turns of steering wheel from lock to lock 4.6
- 63. In case of servo assistance 3.7



STAMP



MAKE FORD

MODEL 1968 MUSTANG 390

FIA REC # 5206390<sup>M</sup>  
GI

SUSPENSION

(\*\*) 70. Suspension, front (photo D) - type Independent  
 (\*\*) 71. Spring - type Coil  
 ( \*) 72. Stabilizer - if fitted Yes  
 73. Shock absorbers - number Two (2)  
 74. Type Tubular Adjustable  
 (\*\*) 78. Suspension, rear (photo E) - type Live Axle  
 (\*\*) 79. Spring - type Leaf  
 ( \*) 80. Stabilizer - if fitted No  
 81. Shock absorbers - number Two (2)  
 82. Type Tubular Adjustable

BRAKES (Photos E and F)

(\*\*) 90. Method of operation Hydraulic  
 ( \*) 91. Power assisted (if fitted) - type Pedal Boost  
 92. Master Cylinders - number and type One (1) - Dual  
 (indicate if duplex master cylinder) Front Rear  
 93. Cylinders - number per wheel 1 1  
 94. Cylinders - wheel bore 60.32 mm 2.375 in 23 mm .906 in  
 (indicate stepped bore dimensions if applicable)

Drum Brakes

	<u>Front</u>	<u>Rear</u>
95. Diameter, inside	mm in254 mm	10in
96. Linings, length	mm in495 mm	19.5in
97. Linings, width	mm in63.5mm	2.5in
98. Shoes - number per brake	Two (2)	
99. Area, total - per brake	mm2 in23145mm2	48.75in2

Disc Brakes

100. Diameter, outside	287 mm 11.3 in	mm	in
101. Thickness of disc	23.88 mm .940 in	mm	in
102. Lining - length	124.5 mm 4.9 in	mm	in
103. Lining - width	46.48 mm 1.83 in	mm	in
104. Pads - number per brake	Two (2)		
105. Area, total - per brake	11,580 mm2 17.9in2	mm2	in2



STAMP

MAKE FORD MODEL 1968 MUSTANG 390 FIA REC # 5206 GI

ENGINE (Photos J and K)

- (\*\*) 130. Cycle two four Wankel
- (\*\*) 131. Cylinders - number Eight (8)
- (\*\*) 132. Cylinders - arrangement Vee Wankel - # of elements and basic dimensions
- (\*\*) 133. Bore 102.9 mm 4.05 in
- (\*\*) 134. Stroke 96.0 mm 3.78 in
- (\*\*) 135. Cylinders - capacity 798 cm3 48.7 in3
- (\*\*) 136. Cylinders, total capacity 6384 cm3 389.5 in3
- (\*\*) 137. Cylinder Block - material/s Cast Iron
- (\*) 138. Sleeves - material/s (if fitted) None
- (\*\*) 139. Head, cylinder - material/s Cast Iron number fitted Two (2)
- (\*\*) 140. Port, inlet - number Eight (8) - Four (4) - per head
- (\*\*) 141. Port, exhaust - number Eight (8) - Four (4) - per head
- (\*) 142. Compression - ratio 10.5
- (\*) 143. Combustion chamber - volume 68.7 cm3 4.2 in3
- (\*) 144. Piston - material/s Aluminum Alloy with Steel Struts
- (\*) 145. Rings - number Three (3)
- (\*) 146. Distance from gudgeon pin centre line to highest point of piston crown 45.2 mm 1.78 in
- (\*) 147. Crankshaft - cast-forged-mach from solid
- (\*\*) 148. Crankshaft - type - integral - sectioned - # of sections
- (\*\*) 149. Crankshaft, main bearings - number Five (5)
- (\*\*) 150. Bearing cap - material/s Cast Iron
- 151. Lubrication - system - dry sump/oil in sump
- 152. Lubricant - capacity 4.7 ltrs pts 5 qts US
- (\*) 153. Cooler, oil - yes no
- 154. Cooling - method Water Radiator
- 155. Cooling - capacity of system 19.39 ltrs pts 20.5 qts US



STAMP

STAMP

MAKE FORD

MODEL 1968 MUSTANG 390

FIA REC #

5206

M  
390  
GI

- (\*) 156. Fan, cooling (if fitted) - diameter 46.36 mm 1.825 in
- (\*) 157. Fan, cooling - number of blades Seven (7) material/s Steel

BEARINGS

- (\*\*) 158. Crankshaft, main - type Insert diameter 69.82 mm 2.7488 in
- (\*\*) 159. Connecting rod, big end - type Insert diameter 61.94 mm 2.4384 in

WEIGHTS

- (\*) 160. Flywheel (clean) 13.2 kg 29 lbs
- (\*) 161. Flywheel with clutch (all rotating parts) 23.6 kg 52 lbs
- (\*) 162. Crankshaft 29.1 kg 64.4 lbs
- 163. Connecting Rod .77 kg 1.69 lbs
- (\*) 164. Piston with rings & pin .83 kg 1.82 lbs

FOUR CYCLE ENGINES

- (\*\*) 170. Camshafts - number One (1) material/s Alloy Iron
- (\*\*) 171. Camshaft - location Cylinder Block
- (\*\*) 172. Camshaft Drive, type Chain
- (\*\*) 173. Valve operation - type Tappet, Push-Rod, Rocker

INLET (See Photo P) (for addtl info re 2 stroke engines and super charged, see page 15)

- 180. Inlet manifold - materials Aluminum
- 181. Valves (overall) - diameter 51.74 mm 2.037 in
- (\*) 182. Valve lift - maximum 12.2 mm .481 in
- 183. Springs, valve - number Two (2)
- 184. Spring - type Coil
- (\*\*) 185. Valves, per cylinder - number One (1)
- (\*) 186. Tappet - clearance for checking timing (cold) 0 mm 0 in
- (\*) 187. Valves - open at (with tolerance for tappet clearance indicated) 18° BTC
- (\*) 188. Valves - close at (with tolerance for tappet clearance indicated) 72° ABC
- (\*) 189. Air filter - type Dry Element



STAMP

EXHAUST (See Photo Q )

- 195. Manifold, exhaust - material/s Cast Iron
- 196. Valves (overall) - diameter 39.78 mm 1.566 in
- 197. Valve, lift - maximum 12.45 mm .490 in
- 198. Valve Springs/valve - number Two (2)
- 199. Springs - type Coil
- (\*\*) 200. Valves - number per cylinder One (1)
- ( \*) 201. Tappet - clearance for checking timing (cold)  
0 mm 0 in
- ( \*) 202. Valves - open at (with tolerance for tappet clearance indicated) 82° BBC
- ( \*) 203. Valves - close at (with tolerance for tappet clearance indicated) 28° ATC

CARBURETION (See Photo N)

- 210. Carburetors, fitted - number One (1)
- 211. Type 4V Down Draft
- ( \*) 212. Make Holley
- ( \*) 213. Model 9510
- 214. Carburetors - number of mixture passages Four (4)
- ( \*) 215. Carburetor - flange hole diameter of exit port  
39.6 mm 1.561 in
- 216. Venturi - throat diameter+ 31.8 33.3mm 1.25 1.3125 in  
Prim. Sec. Prim. Sec.

INJECTION

- 220. Pump - make
- 221. Plungers - number NONE FITTED
- ( \*) 222. Pump - model
- 223. Injectors - location
- 224. Injectors - total number
- ( \*) 225. Inlet pipe - minimum diameter mm in

For variable throat type carburetors, indicate minimum lift of shutter mechanism such as pistons in S.U.

STAMP

STAMP



MAKE FORD MODEL 1968 MUSTANG 390 FIA REC # 5206

ENGINE ACCESSORIES

- ( \*) 230. Pump, fuel - mechanical and/or electrical
- 231. Number fitted One (1) Each
- 232. Ignition system - type Battery and Coil
- 233. Distributors - number One (1)
- 234. Coils, ignition - number One (1)
- 235. Spark plugs - number per cylinder One (1)
- 236. Generator (or Alternator) - number fitted One (1)
- 237. Drive - method Belt
- 238. Voltage, ~~generator~~ <sup>Alternator</sup> - volts 12.8
- 239. Battery - number One (1)
- 240. Location Front of Car
- 241. Voltage - volts 12 amp hrs 55

ENGINE & CAR PERFORMANCE as declared by mfr. in catalogue

- ( \*) 250. Horsepower - maximum engine output 335 at 4800 rpm S.A.E.  
(indicate SAE or DIN)
- ( \*) 251. RPM - maximum 4800 output at that figure 335
- ( \*) 252. Torque - maximum 427 at 3200 rpm
- ( \*) 253. Speed - maximum km/hour miles/hour

DRIVE TRAIN

Clutch

- 260. Type Dry Plate
- 261. Plates - number of driven One (1)
- 262. Plates - diameter 27.94 cm 11 in
- 263. Linings - diameter - inside 17.78 cm 7 in
- Linings - diameter - outside 27.94 cm 11 in
- 264. Method of operation Mechanical



STAMP

MAKE FORD

MODEL 1968 MUSTANG 390 FIA REC # 5206

M  
390  
GI

Gear Box (Photo H)

- (\*\*) 270. Manual type - make Ford
- (\*\*) 271. Ratios, forward - number Four (4)
- 272. Ratios, forward - number synchronized Four (4)
- 273. Gear-Shift - location Floor optional
- (\*\*) 274. Automatic - make Ford type Hydraulic with Planetary Gears and Torque Converter.
- (\*\*) 275. Ratios, forward - number Three (3)
- 276. Gear-Shift - location Floor

277.	Manual		Automatic		Alternative manual/automatic			
	Ratio	# Teeth	Ratio	# Teeth	Ratio	# Teeth	Ratio	# Teeth
1	2.78	$\frac{23}{30}$ $\frac{32}{15}$	2.46	Ratio	2.32	$\frac{23}{25}$ $\frac{32}{15}$		
2	1.93	$\frac{23}{30}$ $\frac{31}{21}$	1.46	Maximum	1.69	$\frac{23}{25}$ $\frac{28}{18}$		
3	1.36	$\frac{29}{30}$ $\frac{25}{24}$	1.00	at 2.02:1	1.29	$\frac{23}{25}$ $\frac{25}{21}$		
4	1.00	Direct		Torque Converter	1.00	Direct		
5				at Stall				
6								
reverse	2.78		2.175		2.32			

- 278. Overdrive - type None Fitted
- 279. Forward gears on which overdrive can be selected
- 280. Overdrive - ratio

FINAL DRIVE

- (\*\*) 290. Type Hypoid-Semi-Floating Straddle Mounted Pinion
- (\*\*) 291. Differential - type Locking by Ratchet or Roller
- (\*\*) 292. Limited Slip Differential (if fitted) - type  $\neq$  Positive Locking by Ratchet or Roller
- 293. Ratio 3.00 3.50 3.70 3.89 4.11 3.25
- Teeth - number  $\frac{39}{13}$   $\frac{35}{10}$   $\frac{37}{10}$   $\frac{35}{9}$   $\frac{37}{9}$   $\frac{39}{12}$

( ) Specify friction or positive locking type



STAMP

MAKE FORD

MODEL 1968 MUSTANG 390

FIA REC # 5206

IMPORTANT

The conformity of the car with the following items of the present recognition form is to be disregarded during the technical inspection when the vehicle has been entered in Group II (Touring Cars) or III (Grand Touring Cars):

41, 72, 80, 91, 142, 143, 144, 145, 146, 153, 156, 157, 160, 161, 162, 163, 164, 182, 186, 187, 188, 189, 201, 202, 203, 212, 213, 215, 216, 222, 225, 230, 250, 251, 252, 253, 255, photos I, M, N & items on page 5 as indicated.

During the technical inspection of cars entered in Group IV (Sports Cars) only the following items of the present recognition form are to be taken into consideration:

1, 2, 3, 9, 20, 21, 22, 23, 24, 25, 26, 70, 71, 78, 79, 90, 130, 131, 132, 133, 134, 135, 136, 137, 138, 139, 140, 141, 147, 148, 149, 150, 158, 159, 170, 171, 172, 173, 185, 200, 270, 271, 274, 275, 290, 291, 292 & photos A, B, D, E, F, G, H, J, K, O.

Optional equipment affecting preceding information:

CATALOGUE PART NUMBER MUST BE GIVEN

R-70	Power Steering	28	LBS.	
S-58	Air Conditioning	75	"	
S7MS-6675-B	Sump Guard	17.4	"	
SLMK-6642-A	Engine Oil Cooler Kit - Includes:			1 - Radiator - Oil
	9.6 LBS. CAP	1.7	QT.	1 - Adapter
				2 - Hoses
				Required fittings, brackets ,
				gaskets, attaching parts.



STAMP

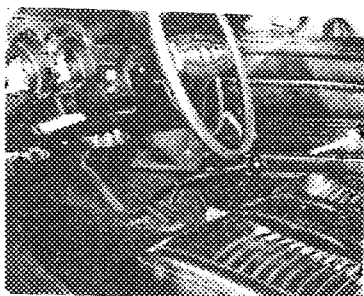
MAKE FORD

MODEL 1968 MUSTANG<sup>390</sup>

FIA REC # 5206

M  
390  
GI

Optional Equipment - CATALOGUE PART NUMBER MUST BE GIVEN



INTERIOR OF CAR WITH MANUAL GEARBOX.



STAMP