

F.I.A. Rec. no 505

ADO47/66

Group 3 - Grand Touring

ROYAL AUTOMOBILE CLUB

31, Belgrave Square, London, S.W.1.

Form of recognition in accordance with Appendix J to the International Sporting Code of the

FEDERATION INTERNATIONALE DE L'AUTOMOBILE

Cylinder-capacity. 1098.....cm³. 67.0.....in³

Manufacturer. <u>MG Car Company Limited.</u>	Model. <u>MG Midget MK II</u>
Serial No. of chassis. <u>GAN3 & GAN3L</u>	Manufacturer. <u>British Motor Corporation</u> ...
engine. <u>10 CC</u>	Manufacturer. <u>British Motor Corporation</u> ...
Recognition is valid from. <u>1st Jan. 1966</u>	List. <u>14</u>

The manufacturing of the model described in this recognition form was started on 27th January...19.64 and the minimum production of...500.....identical cars, in accordance with the specifications of this form was reached on 4th March..19..

Photograph A, $\frac{3}{4}$ view of car from front



F.I.A. Stamp



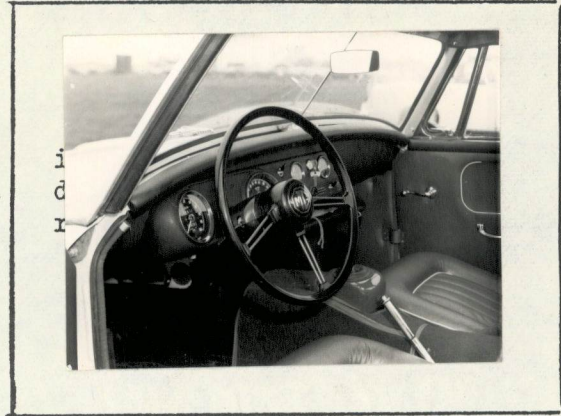
R.A.C. Stamp

Make MG

Model Midget MK II

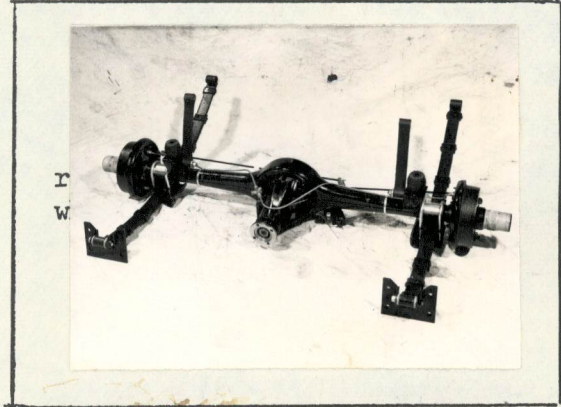
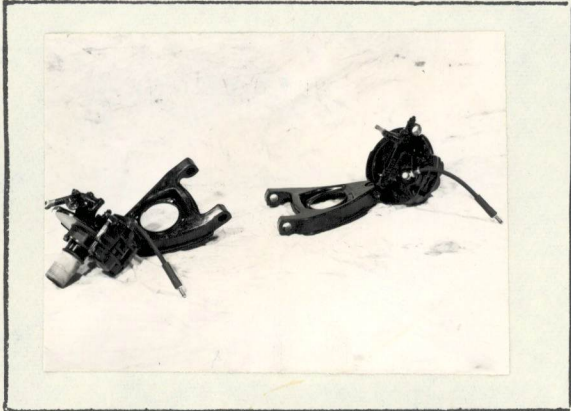
F.I.A. Rec.no. 505

B



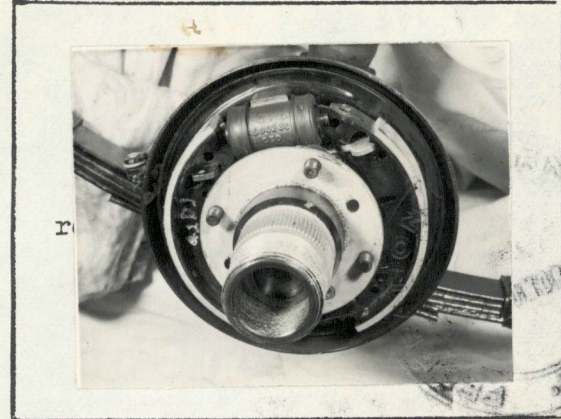
C

D

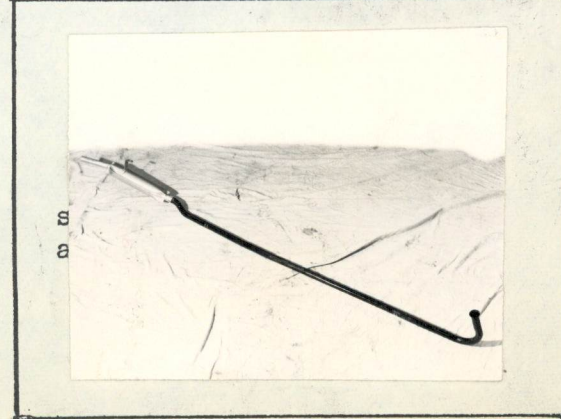
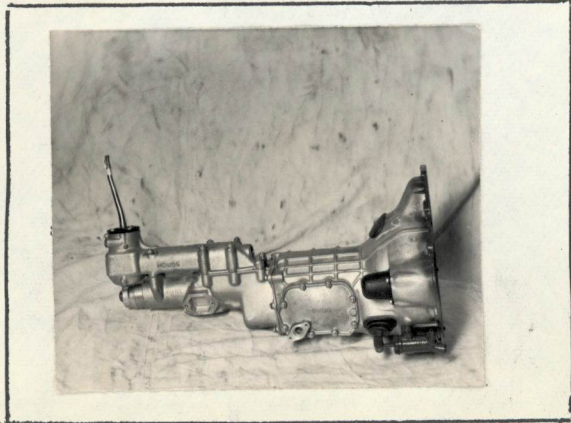


E

F

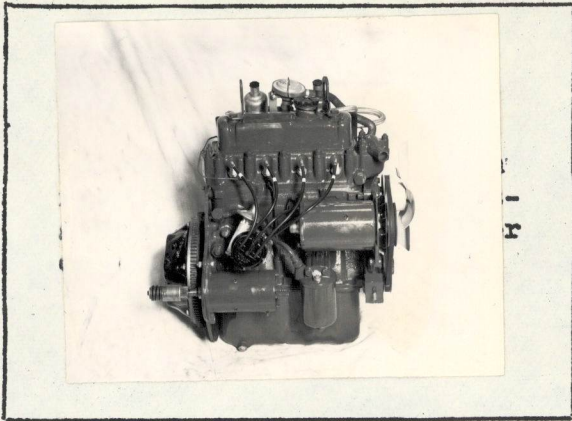


H



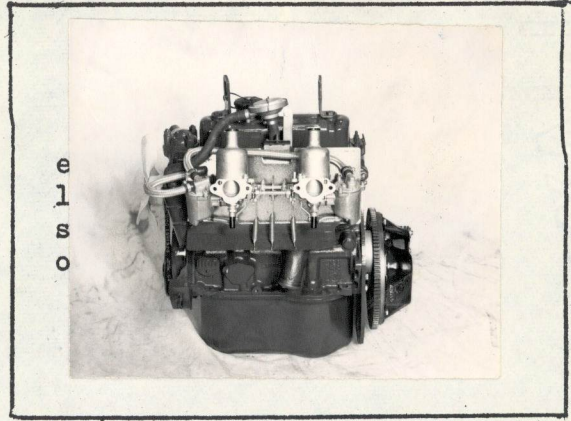
I

J



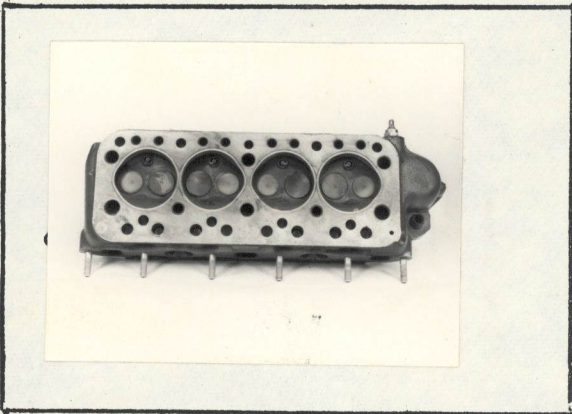
H I

e
l
s
o



K

L

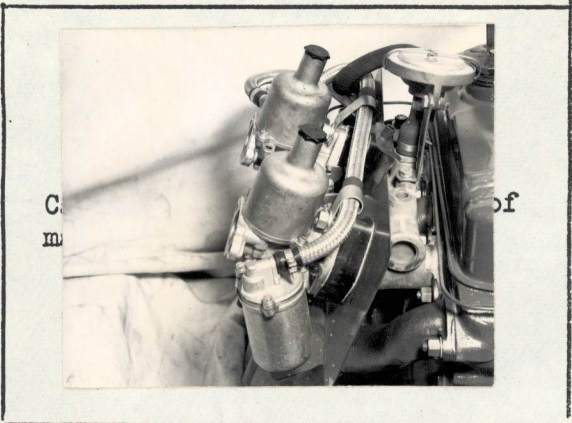


I



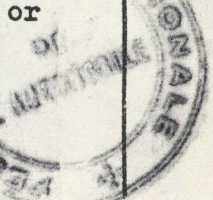
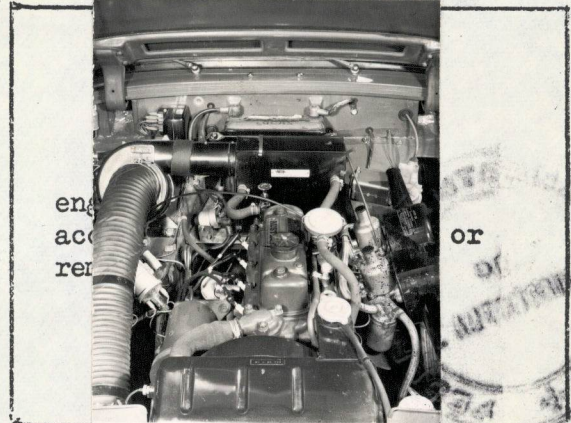
M

N



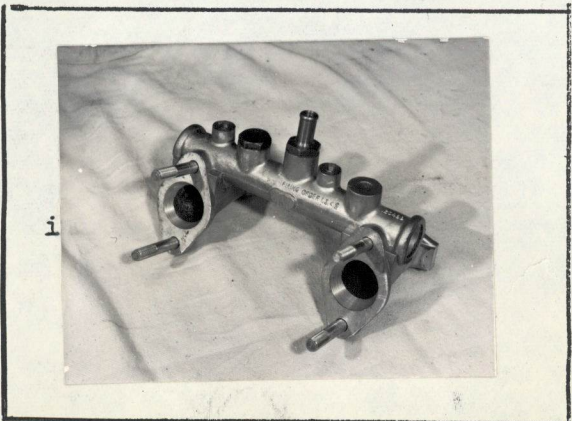
C
m of

eng
acc
ren



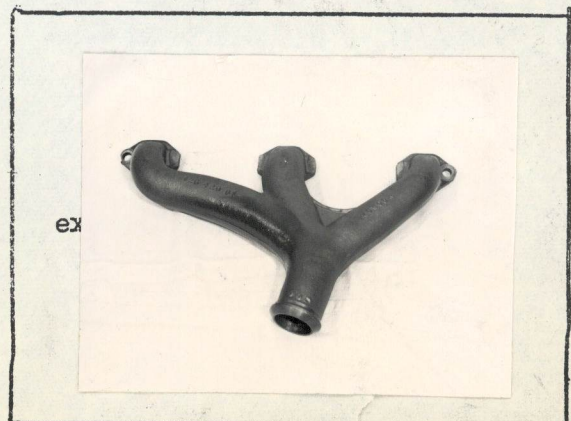
or

P



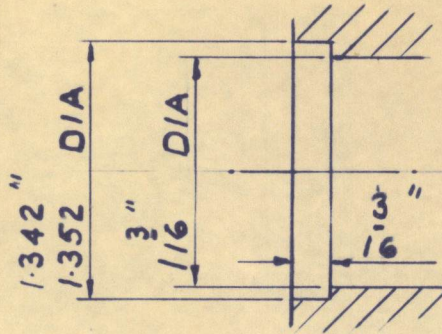
i

ex

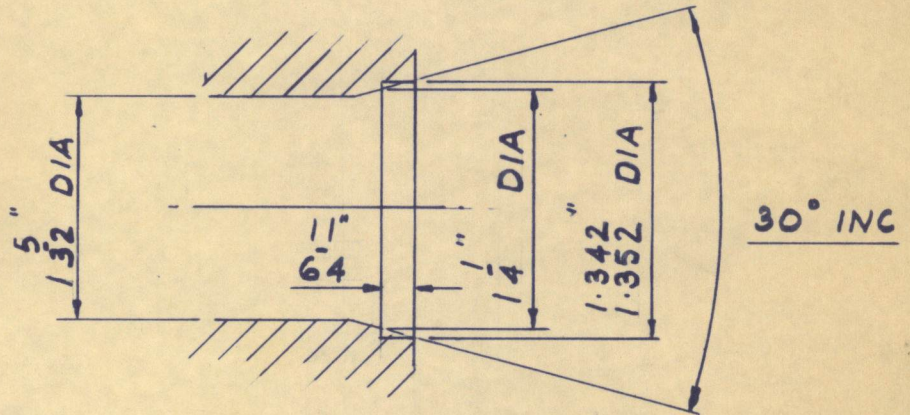


Q

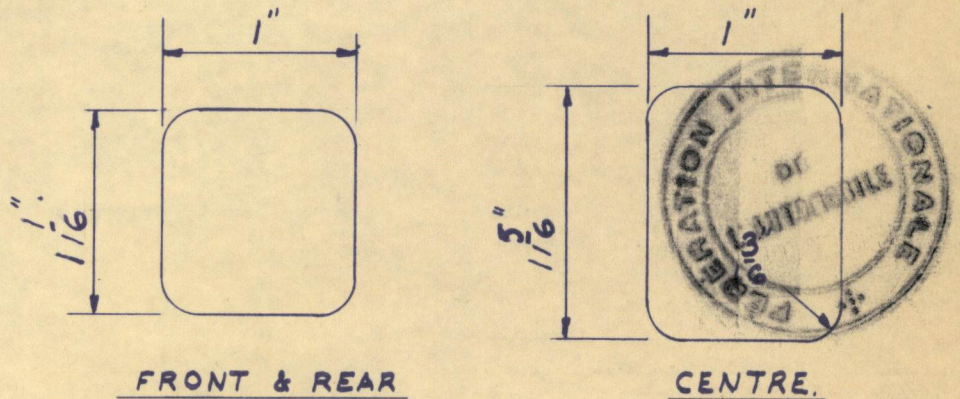
Drawing inlet manifold ports, side of cylinder-head. Indicate scale or dimensions and manufacturing tolerance.



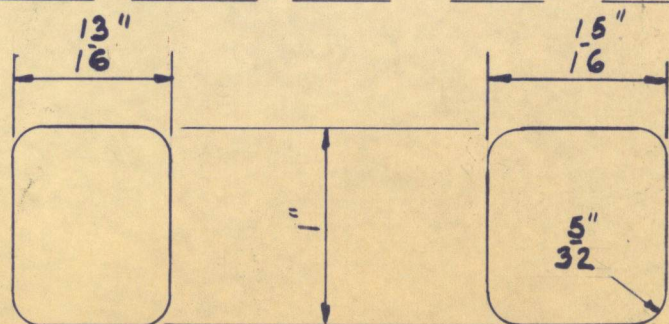
Drawing of entrance to inlet port of cylinder-head. Indicate scale or dimensions and manufacturing tolerance.



Drawing of exhaust manifold ports, side of cylinderhead. Indicate scale or dimensions and manufacturing tolerance.



Drawing of exit to exhaust port of cylinderhead, Indicate scale or dimensions and manufacturing tolerance.



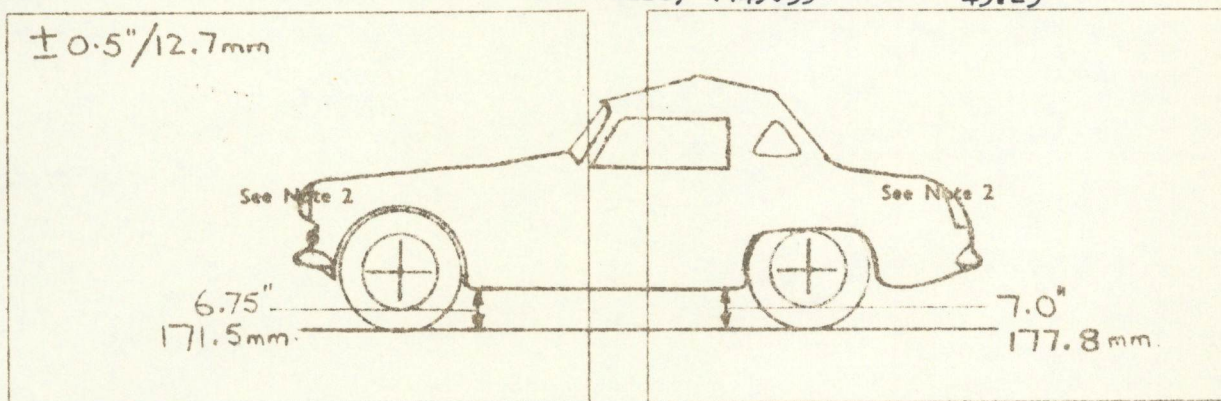
FRONT & REAR CENTRE
GENERAL TOLERANCE ± .010"

NOTE 1.

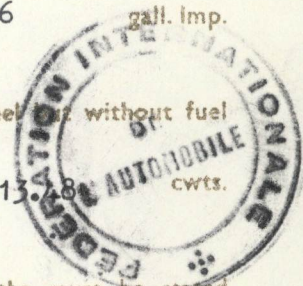
All dimensions must be given in two measuring systems, see Note 3.

CAPACITIES AND DIMENSIONS

1. Wheelbase	2032.0	mm.	80.0	inches
2. Front track				
Disc) 1175.9	mm.	46.3	inches	
Wire)				
3. Rear track				
Disc) 1127.65	mm.	44.75	inches	
Wire) 1149.35		45.25		



4. Overall length of the car	348.932	cm.	137.375	inches
5. Overall width of the car	Disc 139.382	cm.	54.875	inches
	Wire 143.510		56.5	
6. Overall height of the car	123.19	cm.	48.5	inches
7. Capacity of fuel tank (reserve included)	27.24	liters.	7.2	gall. U.S.
				6
8. Seating Capacity.	2			
9. Weight. Total weight of the car with normal equipment, water, oil, and spare wheel or repair tools:	684.8	kg.	1510	lbs.
				1324.8
				2928



NOTE 2.

Differences in track caused by the use of other wheels with different rim widths must be stated when recognition is requested for the wheels concerned. Specify ground clearance in relation to the track and give drawing of two easily recognisable points at front and rear at which measurements are taken. These ground clearance dimensions are only for information when checking the track and can in no way affect the eligibility of the car.

NOTE 3.

CONVERSION TABLE

1 inch/pouce	— 2.54	cm.	1 quart US	— 0.9464	liters.
1 foot/pied	— 30.4794	cm.	1 pint (pt)	— 0.568	liters.
1 sq. inch/pouce carre	— 6.452	cm. ²	1 gallon Imp.	— 4.546	liters.
1 cubic inch/pouce cube	— 16.387	cm. ³	1 gallon US	— 3.785	liters.
1 pound/livre (lb)	— 453.593	gr.	1 hundred weight (cwt.)	— 50.802	kg.

Make **MG**

Model **Midget MK II**

F.I.A. Rec.no. **505**

CHASSIS AND COACHWORK (Photographs A, B and C)

20. Chassis/body construction : ~~separate~~ / unitary construction

21. Unitary construction, material(s) **Steel**

SEPARATE CONSTRUCTION - MATERIALS

22. Chassis **Steel**

23. Coachwork **Steel**

24. Number of doors **2**

Material(s) **Steel**

25. Bonnet **Steel**

26. Boot Lid **Steel**

27. Rear Window

28. Windscreen **Laminated glass**

29. Front door windows **Safety glass**

30. Rear door windows

31. Sliding system of door windows **Vertical winding**

32. Material(s) of rear-quarter light

ACCESSORIES AND UPHOLSTERY

38. Interior heating : ~~yes~~ - no

39. Air conditioning : ~~yes~~ - no

40. Ventillation : ~~yes~~ - no

41. Front seats, type of upholstery **Leathercloth**

42. Weight of front seat(s), complete with supports and rails, out of the car:

7.91 kg. 17.4 lbs.

43. Rear seats, type of upholstery

44. Front bumper, material(s) **Steel**

Weight 5.56 kg. 12.25 lbs.

45. Rear bumper, material(s) **Steel**

Weight 4.65 kg. 10.25 lbs.

WHEELS

50. Type **Disc or wire spoke**

Wire 5.51

51. Weight (per wheel, without tyre)

Disc 5.209

kg. lbs.

52. Method of attachment **4 studs or centre lock cap**

53. Rim diameter

330.2

mm. 13.0 ins.

54. Rim width

88.9

mm. 3.5 ins.

STEERING

60. Type **Rack & Pinion**

61. Servo-assistance : ~~yes~~ - no

62. Number of turns of steering wheel from lock to lock

2 1/4

63. In case of servo-assistance.



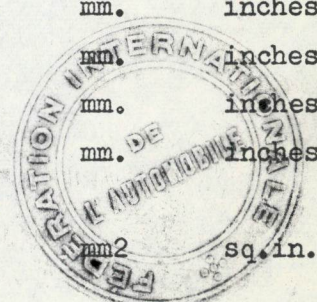
SUSPENSION

- 70. Front suspension (photograph D), type **Independent**
- 71. Type of spring **Coil**
- 72. Stabiliser (if fitted) **No**
- 73. Number of shock absorbers **2** 74. Type **Hydraulic lever arm**
- 78. Rear suspension (photograph E), type **Semi elliptic**
- 79. Type of spring **Leaf**
- 80. Stabiliser (if fitted) **No**
- 81. Number of shock absorbers **2** 82. Type **Hydraulic lever arm**

BRAKES (photographs F and G)

- 90. Method of operation **Hydraulic**
- 91. Servo-assistance (if fitted), type **No**
- 92. Number of hydraulic master cylinders **1**

		FRONT	REAR
93. Number of cylinders per wheel		2	1
94. Bore of wheel cylinder(s)	50.8	mm. 2.0 inches	19.05 mm. 0.75 inches
Drum Brakes			
95. Inside diameter		mm. inches	177.8 mm. 7.0 inches
96. Length of brake linings		mm. inches	169.6 mm. 6.68 inches
97. Width of brake linings		mm. inches	31.8 mm. 1.25 inches
98. Number of shoes per brake		mm. inches	mm. 2 inches
99. Total area per brake		mm ² sq.in.	1077.5 mm ² 16.7 sq.in.
Disc Brakes			
100. Outside diameter	209.5	mm. 8.25 inches	mm. inches
101 Thickness of disc	7.62	mm. 0.30 inches	mm. inches
102 Length of brake linings approx	66.5	mm. 2.625 inches	mm. inches
103 Width of brake linings approx	44.0	mm. 1.75 inches	mm. inches
104 Number of pads per brake		2	
105 Total area per brake	580.6	mm ² 9.0 sq.in.	mm ² sq.in.



Make **MG**

Model **Midget MK II**

F.I.A. Rec.no. **505**

ENGINE (photographs J and K)

130. Cycle	4 stroke	131. Number of cylinders	4
132. Cylinder Arrangement	In line		
133. Bore	64.58 mm. 2.543 in.	134. Stroke	83.72 mm. 3.296 in.
135. Capacity per cylinder			274.5 cm³ 16.75 cu.in.
136. Total cylinder capacity			1098 cm³ 67.0 cu.in.
137. Material(s) of cylinder block	Cast iron		
138. Material(s) of sleeves (if fitted)			
139. Cylinder head, material(s)	Cast iron	Number fitted	1
140. Number of inlet ports	2	141. Number of exhaust ports	3
142. Compression ratio	8.9:1		
143. Volume of one combustion chamber		28.29 cm³ 1.725 cu.in.	
144. Piston, material	Aluminium alloy	145. Number of rings	4
146. Distance from gudgeon pin centre line to highest point of piston crown			34.024 mm. 1.348 in.
147. Crankshaft : moulded / Stamped		148. Type of crankshaft : integral/.	Yes....
149. Number of crankshaft main bearings	3		
150. Material of bearing cap	Cast iron		
151. System of lubrication : dry-sump / oil in sump			
152. Capacity, lubricant	3.69 ltrs. 6.5 pts. 3.89 Quarts U.S.		
153. Oil cooler : yes / no		154. Method of engine cooling	Pressurised water
155. Capacity of cooling system	5.67 ltrs. 10 pts. 5.99 quarts U.S.		
156. Cooling fan (if fitted) dia.		25.4 cm. 10.0 in.	
157. Number of blades of cooling fan	4		

Bearings

158. Crankshaft main, type	Copper lead	Dia.	54.5 mm. 2.1465 in.
159. Connecting rod, big end	Copper lead	Dia.	44.99 mm. 1.771 in.

Weights

160. Flywheel (clean)		9.52 kg. 21.0 lbs.	
161. Flywheel with clutch (all turning parts).		30.75 kg. 67.75 lbs.	
162. Crankshaft	10.1 kg. 22.25 lbs.	163. Connecting rod	.68 kg. 1.5 lbs.
164. Piston with rings and pin		0.278 kg. 0.609 lbs.	

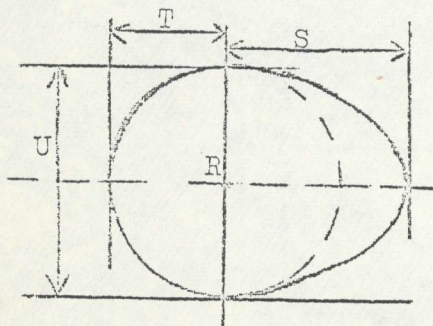


ENGINE ACCESSORIES

- 230. Fuel pump : mechanical and/or electric.
- 231. No.fitted **1**
- 232. Type of ignition system **Coil**
- 233. No. of distributors **1**
- 234. No. of ignition coils **1**
- 235. No. of spark plugs per cylinder **1**
- 236. Generator, number fitted **1**
- 237. Method of drive **Wedge belt**
- 238. Voltage of generator **12** volts.
- 239. Battery, number **1**
- 240. Location **Rear of engine compartment**
- 241. Voltage of battery **12** volts

ENGINE AND CAR PERFORMANCES (as declared by manufacturer in catalogue)

- 250. Max. engine output **59** (type of horsepower: **BHP**) at **5750** rpm
- 251. Max. rpm **6000** output at that figure
- 252. Max torque **65** at **3500** rpm
- 253. Max speed of the car **147.7** km/hour **91.8** miles/hour



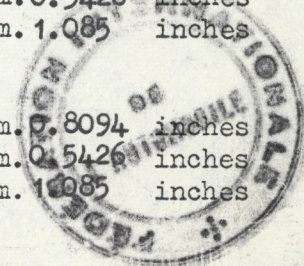
R = centre of camshaft.

Inlet cam

- S = 20.56 mm. 0.8094 inches
- T = 13.81 mm. 0.5426 inches
- U = 27.56 mm. 1.085 inches

Exhaust cam

- S = 20.56 mm. 0.8094 inches
- T = 13.81 mm. 0.5426 inches
- U = 27.56 mm. 1.085 inches



Make **MG**

Model **Midget MK II**

F.I.A. Rec.no. **505**

DRIVE TRAIN

CLUTCH

- 260. Type of clutch **Diaphragm spring**
- 261. No of plates **1**
- 262. Dia. of clutch plates **18.45 cm. 7.25 ins..**
- 263. Dia. of linings, inside **12.7 cm. 5.0 ins.**
- outside **18.45 cm. 7.25 ins.**
- 264. Method of operating clutch **Hydraulic**

GEAR BOX (photograph H)

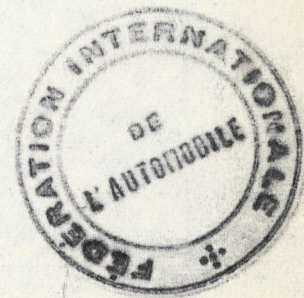
- 270. Manual type, make **BMC**
- 271. No. of gear-box ratios forward **4**
- 272. Synchronized forward ratios **3**
- 273. Location of gear-shift **Central between front seats**
- 274. Automatic, make **type**
- 275. No. of forward ratios
- 276. Location of gear shift

277.	Manual		Automatic		Alternative manual / automatic			
	Ratio	No.teeth	Ratio	No.teeth	Ratio	No.teeth	Ratio	No.teeth
1	3.200:1	$\frac{26}{20} \times \frac{32}{13}$			2.93:1	$\frac{25}{21} \times \frac{32}{13}$		
2	1.916:1	$\frac{26}{20} \times \frac{28}{19}$			1.754:1	$\frac{25}{21} \times \frac{28}{19}$		
3	1.357:1	$\frac{26}{20} \times \frac{24}{23}$			1.242:1	$\frac{25}{21} \times \frac{24}{23}$		
4	1.000:1				1.000:1			
5								
6								
re-verse	4.120:1	$\frac{26}{20} \times \frac{18}{13} \times \frac{32}{14}$			3.768:1	$\frac{25}{21} \times \frac{18}{13} \times \frac{32}{14}$		

- 278. Overdrive, type
- 279. Forward gears on which overdrive can be selected
- 280. Overdrive ratio

FINAL DRIVE

- 290. Type of final drive **Hypoid**
- 291. Type of differential **Bevel**
- 292. Type of limited slip differential (if fitted)
- 293. Final drive ratio **4.22:1**
- Number of teeth **9/38**



IMPORTANT - The conformity of the car with the following items of the present recognition form is to be disregarded during the scrutineering, when the vehicle has been entered in group 2 (Touring cars) or 3 (Grand Touring cars): 41, 72, 80, 91, 142, 143, 144, 145, 146, 153, 156, 157, 160, 161, 162, 163, 164, 182, 184, 186, 187, 188, 189, 199, 201, 202, 203, 212, 213, 215, 216, 222, 225, 230, 250, 251, 252, 253, and photographs I, M and N.

During the scrutineering of cars entered in group 4 (sportscars) only the following items of the present recognition form are to be taken into consideration: 1,2,3,9,20, 21, 22, 23, 24, 25, 26, 70, 71, 78, 79, 90, 130, 131, 132, 133, 134, 135, 136, 137, 138, 139, 140, 141, 147, 148, 149, 150, 158, 159, 170, 171, 172, 173, 185, 200, 270, 271, 274, 275, 290, 291, 292 and photographs A, B, D, E, F, G, H, J, K and O.

The vehicle described in this form has been subject to the following amendments:

I/5/6
on.....196 rec.no. **505**...List.....on.....19.. rec.no.....List.....
on.....19.. rec.no.....List.....on.....19.. rec.no.....List.....
on.....19.. rec.no.....List.....on.....19.. rec.no.....List.....
on.....19.. rec.no.....List.....on.....19.. rec.no.....List.....
on.....19.. rec.no.....List.....on.....19.. rec.no.....List.....

Optional equipment affecting preceding information. This to be stated together with reference number.

- 293. Final drive ratio - 4.55:1
Number of teeth - 9/41
- 153. Oil cooler - Part Number ARA.205
- 72. Anti-roll bar - Part Number AHA.7013
Hard top - Part Number AHA.7815/6/7/8





MOTOR SPORT DIVISION
The Royal Automobile Club,
31 Belgrave Square, London, S.W.1

Manufacturer MG Car Company Ltd.,
Model Mg. Midget Mark II
Amendment No. 1
F.I.A. Recognition No. 505

Amendment to Form of Recognition

FEDERATION INTERNATIONALE DE L'AUTOMOBILE

No. Reference No.

OPTIONAL EQUIPMENT

- | | | | |
|----|------|--|------------------------|
| 1. | 54. | Wire wheel - C - AHA. 7573 | } Wheels |
| | | Rim width - 127.0 mm / 5.0 inches | |
| | 51. | 16.0 lbs./7.27 kgs. | } |
| 2. | 292. | B.M.C. Limited Slip Differential C-BTA.696 | |
| 3. | 293. | Final drive ratio | 3.727 3.9 4.875 |
| | | No. of teeth | 11/41 10/39 8/39 |
| 4. | 7. | Supplementary fuel tank 6 gall./27.3 litres C-AHA 7565 | |



Stamp of F.I.A./R.A.C. to be affixed here

Date amendment is valid from 1st May, 1966

Make

MG

Model

MGB GT

Registration No.

IMPORTANT—The conformity of the car with the following items of the present recognition form are to be disregarded during the scrutineering, when the vehicle has been entered in group 2 (Touring cars) and Group 2 (Touring cars): 41, 72, 80, 91, 142, 143, 144, 145, 146, 153, 156, 157, 160, 161, 162, 163, 164, 182, 186, 187, 188, 189, 201, 202, 203, 212, 213, 215, 216, 222, 225, 230, 250, 251, 252, 253, 255 and photographs L, M and N and page 4.

During the scrutineering of cars entered in group 4 (Sportscars) only the following items of the present recognition form are to be taken into consideration: 1, 2, 3, 9, 20, 21, 22, 23, 24, 25, 26, 27, 28, 29, 90, 130, 131, 132, 133, 134, 135, 136, 137, 138, 139, 140, 141, 147, 148, 149, 150, 158, 159, 170, 171, 172, 173, 185, 200, 270, 271, 274, 275, 290, 291, 292 and photographs A, B, D, E, F, G, H, J, K and O.

The vehicle described in this form has been subject to the following amendments

on	1/7/	1967	rec. no.	560	List	4	on	19	rec. no.		List
on	1/11	1968	rec. no.	560	List	1	on	19	rec. no.		List
on		19	rec. no.		List		on	19	rec. no.		List
on		19	rec. no.		List		on	19	rec. no.		List
on		19	rec. no.		List		on	19	rec. no.		List

Optional equipment affecting preceding information. This to be stated together with reference number

- 7. Fuel tank - capacity 21.0 gallons/95.34 litres
- 50. Wheel - wire spoke 51. 17.87 lbs./8.12 kgs. 52. Centre lock of p.
- 53. Rim diameter - 355.6 mm/14.0 ins. 54. Rim width - 139.7mm/5.5 ins.



~~195. Exhaust manifold - steel~~
~~Part No. C-AMH.7403~~

W
 1/1/67

- 292. BMC Limited Slip differential - C-BTB.777
- 293. Final drive ratio - 4.55:1, 4.22:1, 4.875:1, 3.507:1, 3.07:1
 9/41 9/38 8/39 13/43 14/43



Make **MG**

Model **MGB GT**

IMPORTANT--The conformity of the car with the following items of the present recognition form are to be disregarded during the scrutineering, when the vehicle has been entered in group 2 (Touring cars) and group 3 (Grand Touring cars) 41, 72, 80, 91, 142, 143, 144, 145, 146, 153, 156, 157, 160, 161, 162, 163, 164, 165, 166, 167, 187, 188, 189, 201, 202, 203, 212, 213, 215, 216, 222, 225, 230, 250, 251, 252, 253, 254, 255, 256, 257, 258, 259, 260, 261, 262, 263, 264, 265, 266, 267, 268, 269, 270, 271, 272, 273, 274, 275, 276, 277, 278, 279, 280, 281, 282, 283, 284, 285, 286, 287, 288, 289, 290, 291, 292, 293, 294, 295, 296, 297, 298, 299, 300, 301, 302, 303, 304, 305, 306, 307, 308, 309, 310, 311, 312, 313, 314, 315, 316, 317, 318, 319, 320, 321, 322, 323, 324, 325, 326, 327, 328, 329, 330, 331, 332, 333, 334, 335, 336, 337, 338, 339, 340, 341, 342, 343, 344, 345, 346, 347, 348, 349, 350, 351, 352, 353, 354, 355, 356, 357, 358, 359, 360, 361, 362, 363, 364, 365, 366, 367, 368, 369, 370, 371, 372, 373, 374, 375, 376, 377, 378, 379, 380, 381, 382, 383, 384, 385, 386, 387, 388, 389, 390, 391, 392, 393, 394, 395, 396, 397, 398, 399, 400, 401, 402, 403, 404, 405, 406, 407, 408, 409, 410, 411, 412, 413, 414, 415, 416, 417, 418, 419, 420, 421, 422, 423, 424, 425, 426, 427, 428, 429, 430, 431, 432, 433, 434, 435, 436, 437, 438, 439, 440, 441, 442, 443, 444, 445, 446, 447, 448, 449, 450, 451, 452, 453, 454, 455, 456, 457, 458, 459, 460, 461, 462, 463, 464, 465, 466, 467, 468, 469, 470, 471, 472, 473, 474, 475, 476, 477, 478, 479, 480, 481, 482, 483, 484, 485, 486, 487, 488, 489, 490, 491, 492, 493, 494, 495, 496, 497, 498, 499, 500, 501, 502, 503, 504, 505, 506, 507, 508, 509, 510, 511, 512, 513, 514, 515, 516, 517, 518, 519, 520, 521, 522, 523, 524, 525, 526, 527, 528, 529, 530, 531, 532, 533, 534, 535, 536, 537, 538, 539, 540, 541, 542, 543, 544, 545, 546, 547, 548, 549, 550, 551, 552, 553, 554, 555, 556, 557, 558, 559, 560, 561, 562, 563, 564, 565, 566, 567, 568, 569, 570, 571, 572, 573, 574, 575, 576, 577, 578, 579, 580, 581, 582, 583, 584, 585, 586, 587, 588, 589, 590, 591, 592, 593, 594, 595, 596, 597, 598, 599, 600, 601, 602, 603, 604, 605, 606, 607, 608, 609, 610, 611, 612, 613, 614, 615, 616, 617, 618, 619, 620, 621, 622, 623, 624, 625, 626, 627, 628, 629, 630, 631, 632, 633, 634, 635, 636, 637, 638, 639, 640, 641, 642, 643, 644, 645, 646, 647, 648, 649, 650, 651, 652, 653, 654, 655, 656, 657, 658, 659, 660, 661, 662, 663, 664, 665, 666, 667, 668, 669, 670, 671, 672, 673, 674, 675, 676, 677, 678, 679, 680, 681, 682, 683, 684, 685, 686, 687, 688, 689, 690, 691, 692, 693, 694, 695, 696, 697, 698, 699, 700, 701, 702, 703, 704, 705, 706, 707, 708, 709, 710, 711, 712, 713, 714, 715, 716, 717, 718, 719, 720, 721, 722, 723, 724, 725, 726, 727, 728, 729, 730, 731, 732, 733, 734, 735, 736, 737, 738, 739, 740, 741, 742, 743, 744, 745, 746, 747, 748, 749, 750, 751, 752, 753, 754, 755, 756, 757, 758, 759, 760, 761, 762, 763, 764, 765, 766, 767, 768, 769, 770, 771, 772, 773, 774, 775, 776, 777, 778, 779, 780, 781, 782, 783, 784, 785, 786, 787, 788, 789, 790, 791, 792, 793, 794, 795, 796, 797, 798, 799, 800, 801, 802, 803, 804, 805, 806, 807, 808, 809, 810, 811, 812, 813, 814, 815, 816, 817, 818, 819, 820, 821, 822, 823, 824, 825, 826, 827, 828, 829, 830, 831, 832, 833, 834, 835, 836, 837, 838, 839, 840, 841, 842, 843, 844, 845, 846, 847, 848, 849, 850, 851, 852, 853, 854, 855, 856, 857, 858, 859, 860, 861, 862, 863, 864, 865, 866, 867, 868, 869, 870, 871, 872, 873, 874, 875, 876, 877, 878, 879, 880, 881, 882, 883, 884, 885, 886, 887, 888, 889, 890, 891, 892, 893, 894, 895, 896, 897, 898, 899, 900, 901, 902, 903, 904, 905, 906, 907, 908, 909, 910, 911, 912, 913, 914, 915, 916, 917, 918, 919, 920, 921, 922, 923, 924, 925, 926, 927, 928, 929, 930, 931, 932, 933, 934, 935, 936, 937, 938, 939, 940, 941, 942, 943, 944, 945, 946, 947, 948, 949, 950, 951, 952, 953, 954, 955, 956, 957, 958, 959, 960, 961, 962, 963, 964, 965, 966, 967, 968, 969, 970, 971, 972, 973, 974, 975, 976, 977, 978, 979, 980, 981, 982, 983, 984, 985, 986, 987, 988, 989, 990, 991, 992, 993, 994, 995, 996, 997, 998, 999, 1000

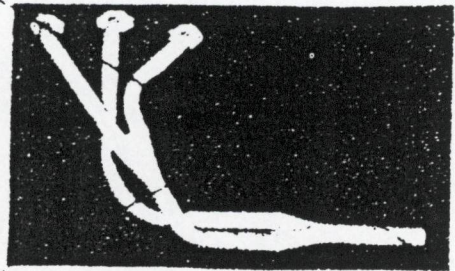
During the scrutineering of cars entered in group 4 (Sports cars) only the following items of the present recognition form are to be taken into consideration 1, 2, 3, 9, 20, 21, 22, 23, 24, 25, 26, 27, 28, 29, 30, 31, 32, 33, 34, 35, 36, 37, 38, 39, 40, 41, 42, 43, 44, 45, 46, 47, 48, 49, 50, 51, 52, 53, 54, 55, 56, 57, 58, 59, 60, 61, 62, 63, 64, 65, 66, 67, 68, 69, 70, 71, 72, 73, 74, 75, 76, 77, 78, 79, 80, 81, 82, 83, 84, 85, 86, 87, 88, 89, 90, 91, 92, 93, 94, 95, 96, 97, 98, 99, 100, 101, 102, 103, 104, 105, 106, 107, 108, 109, 110, 111, 112, 113, 114, 115, 116, 117, 118, 119, 120, 121, 122, 123, 124, 125, 126, 127, 128, 129, 130, 131, 132, 133, 134, 135, 136, 137, 138, 139, 140, 141, 142, 143, 144, 145, 146, 147, 148, 149, 150, 151, 152, 153, 154, 155, 156, 157, 158, 159, 160, 161, 162, 163, 164, 165, 166, 167, 168, 169, 170, 171, 172, 173, 185, 200, 270, 271, 274, 275, 290, 291, 292 and photographs A, B, D, E, F, G, H, J, K and O

The vehicle described in this form has been subject to the following amendments

on 1/7/	1967	rec. no. 560	List 4	on	19	rec. no.	List
on 1/1/	1968	rec. no. 560	List 1	on	19	rec. no.	List
on	19	rec. no.	List	on	19	rec. no.	List
on	19	rec. no.	List	on	19	rec. no.	List
on	19	rec. no.	List	on	19	rec. no.	List

Optional equipment affecting preceding information This to be stated together with reference to the relevant item of the present recognition form

- 7. Fuel tank - capacity 21.0 gallons/95.34 litres
- 50. Wheels - Wire spoke 51. 17.87 lbs./8.12 kgs. 52. Centre lock C ;
- 53. Rim diameter - 355.6 mm/14.0 ins. 54. Rim width - 139.7mm/5.5 ins..



~~195. Ford Mustang Mansfield steel~~
~~Part No. G 6000 21 3~~

- 292. BMC Limited Slip differential - C-BTB.777
- 293. Final drive ratio - 4.55:1, 4.22:1, 4.875:1, 3.307:1, 3.07:1
 9/41 9/38 8/39 13/43 14/43

