

F.I.A. Rec. n° 5022
 Group 1 - Series Production
 Touring

ROYAL AUTOMOBILE CLUB

31, Belgrave Square, London, S.W.1.

Form of recognition in accordance with
 Appendix J to the International Sporting Code of the

FEDERATION INTERNATIONALE DE L'AUTOMOBILE

Rootes Group.	Cylinder-capacity....875...cm ³ ...53:4...in ³
Manufacturer..Singer Motors Limited..	Model..Singer Chamois Mk. 11.....
Serial No. of chassis.)...B.73/.....	Manufacturer....Rootes Group.....
) 3000001.	Manufacturer....Rootes Group.....
Recognition is valid from.1st Jan. 1966	List.....

The manufacturing of the model described in this recognition form was started on ..17th June....1965 and the minimum production of.....5,000....identical cars, in accordance with the specifications of this form was reached on.28th Nov..1965.

Photograph A, $\frac{3}{4}$ view of car from front



F.I.A. Stamp



R.A.C. Stamp

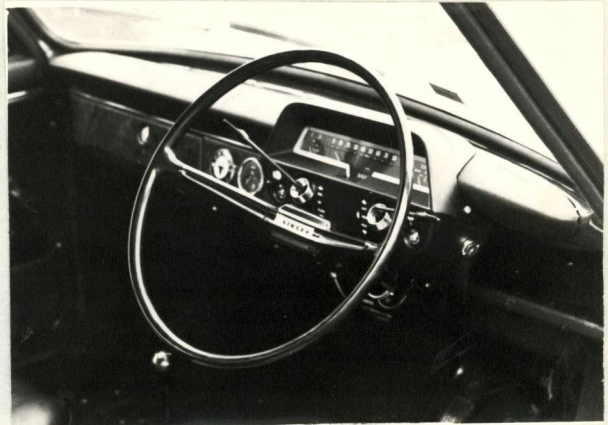
Make Singer

Model Chamois. Mk.11 F.I.A. Rec.no. 5022

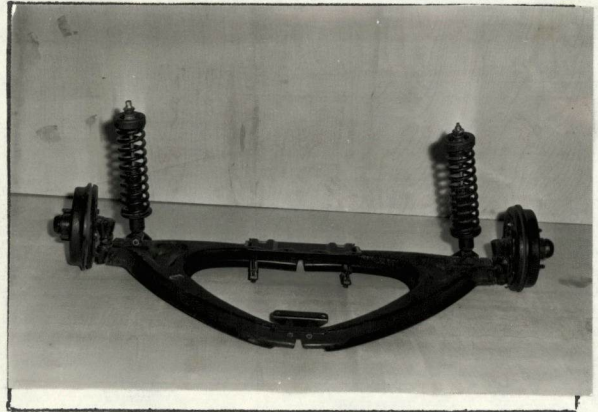
B



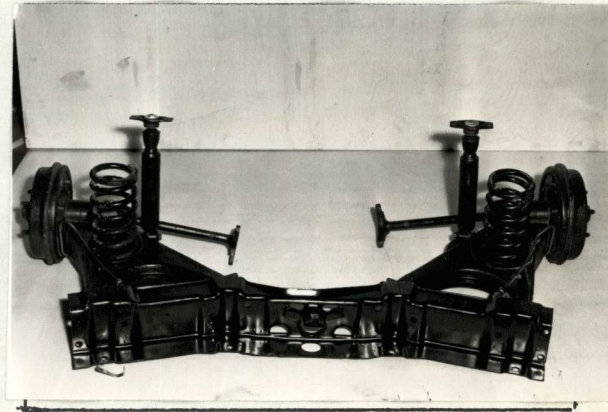
C



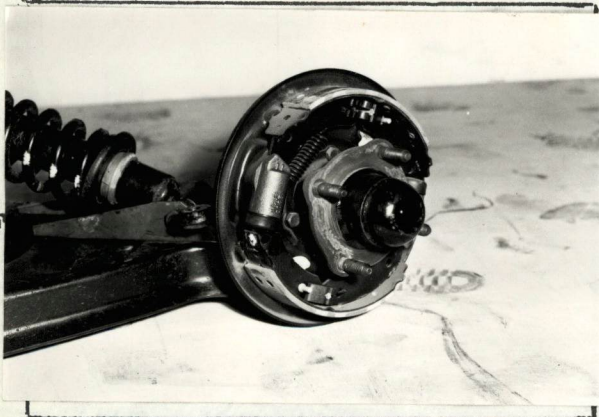
D



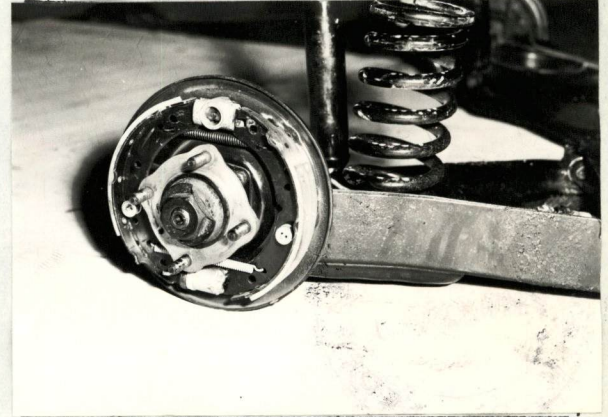
E



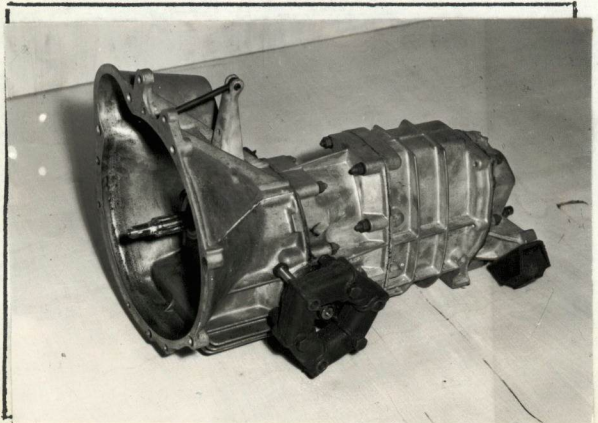
F



G



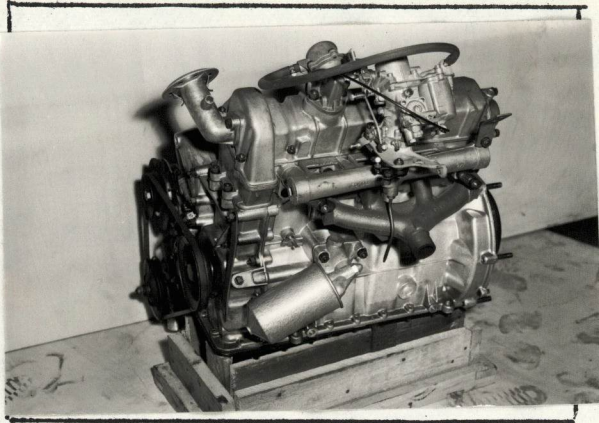
H



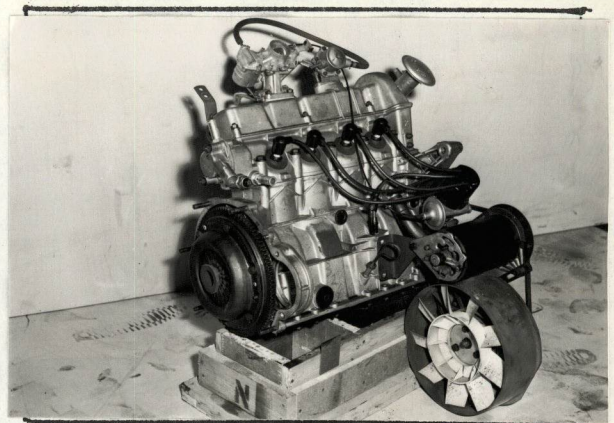
I



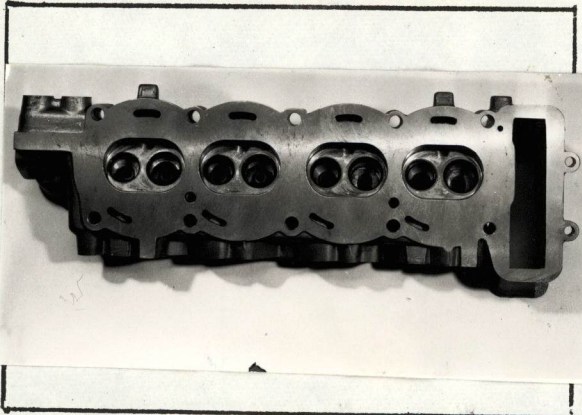
J



K



L



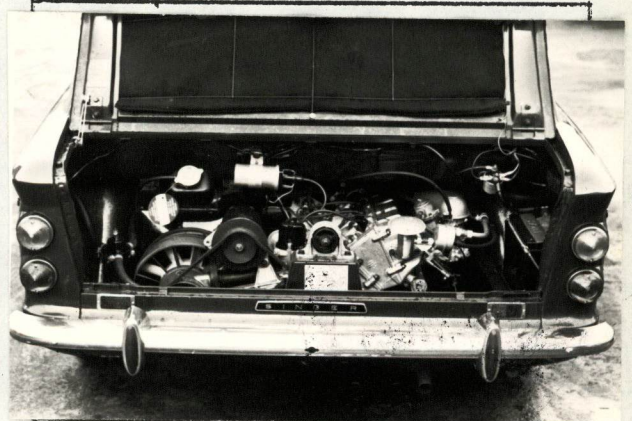
I



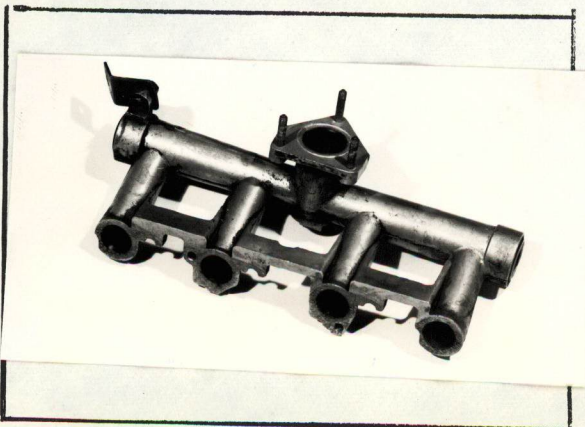
N



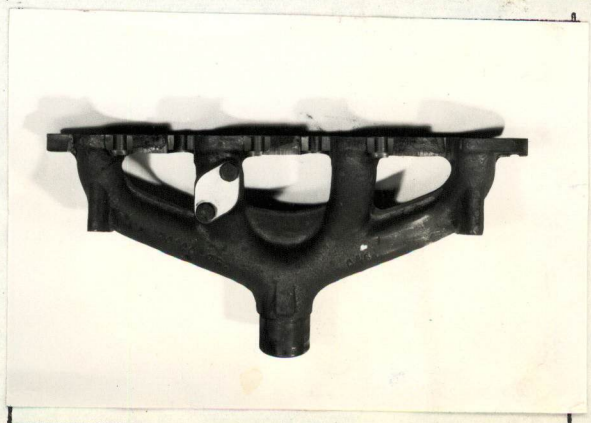
O



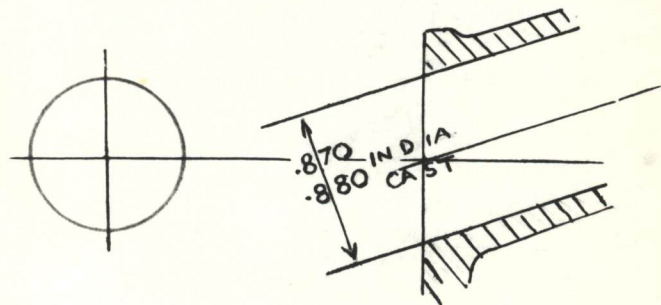
P



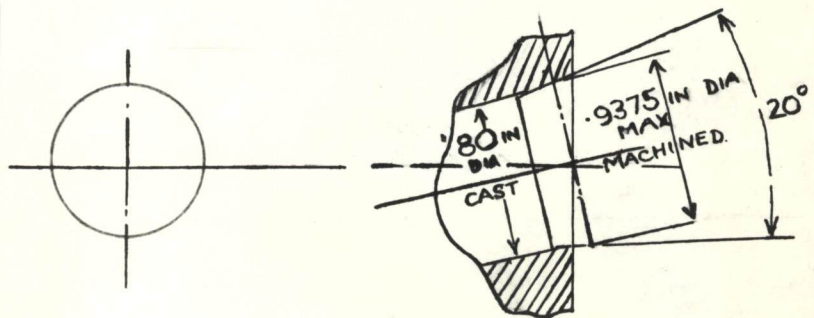
Q



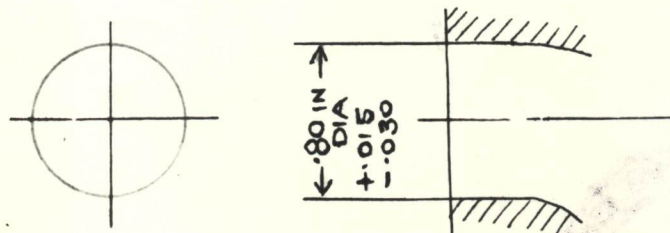
Drawing inlet manifold ports, side of cylinder-head. Indicate scale or dimensions and manufacturing tolerance.



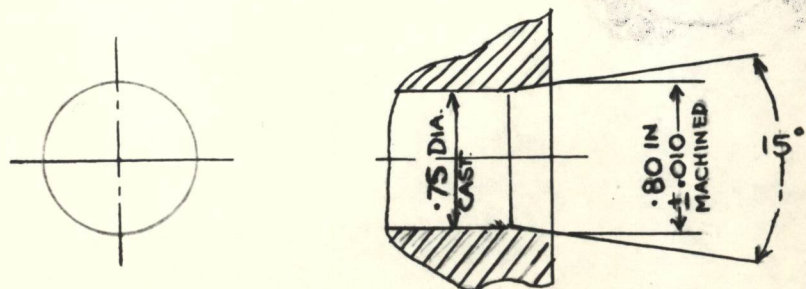
Drawing of entrance to inlet port of cylinder-head. Indicate scale or dimensions and manufacturing tolerance.



Drawing of exhaust manifold ports, side of cylinderhead. Indicate scale or dimensions and manufacturing tolerance.



Drawing of exit to exhaust port of cylinder-head. Indicate scale or dimensions and manufacturing tolerance.

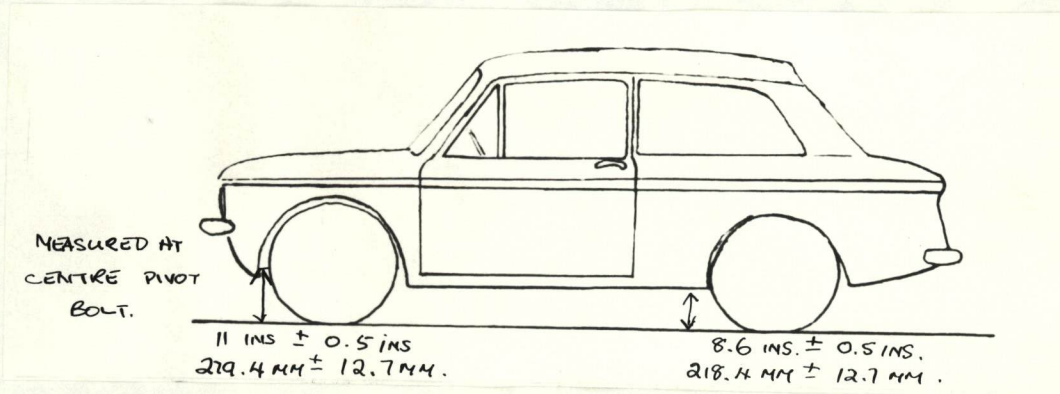


Make. Singer. Model Chamois Mk.11. F.I.A. Rec.no. 5022

NOTE 1. All dimensions must be given in two measuring systems, see Note 3.

CAPACITIES AND DIMENSIONS.

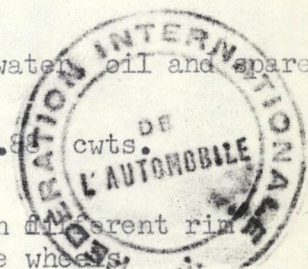
- | | | |
|----------------|--------------------|--------------------|
| 1. Wheelbase | 2082.8 mm. | 82 inches. |
| 2. Front track | 1219.2 ± 12.7 mm. | 48 ± 0.5 inches. |
| 3. Rear track | 1216.66 ± 12.7 mm. | 47.9 ± 0.5 inches. |



- | | | |
|--|--------------|------------------------------|
| 4. Overall length of the car | 358.8 cm. | 141.25 inches. |
| 5. Overall width of the car. | 153 cm. | 60.25 inches. |
| 6. Overall height of the car. | 138.43 cm. | 54.5 inches. |
| 7. Capacity of fuel tank (reserve included) | | |
| | 27.276 ltrs. | 7.2 Gall US 6 Gall Imp. |
| 8. Seating Capacity | 4. | |
| 9. Weight, total weight of the car with normal equipment, water, oil and spare wheel but without fuel or repair tools: | | |
| | 699.9 Kg. | 1545 lbs. 13.8 cwt. |

NOTE 2.

Differences in track caused by the use of other wheels with different rim widths must be stated when recognition is requested for the wheels concerned. Specify ground clearance in relation to the track and give drawing of two easily recognisable points at front and rear at which measurements are taken. These ground clearance dimensions are only for information when checking the track and can in no way affect the eligibility of the car.



NOTE 3. CONVERSION TABLE.

1 inch/pouce	- 2.54 cm.	1 quart US	- 0.9464 ltrs.
1 foot/pied	-30 .4794 cm.	1 pint (pt)	- 0.568 ltrs.
1 sq. inch/pouce carre	- 6.452 cm2.	1 gallon Imp.	- 4.546 ltrs.
1 cubic inch/pouce cube	-16.387 cm3.	1 gallon US.	- 3.785 ltrs.
1 pound/livre (lb)	-453.593 gr.	1 hundred weight (cwt.)	- 50.802 kg.

Make Singer.

Model Chamois Mk.11.

F.I.A. Rec.no. 5022

CHASSIS AND COACHWORK (Photographs A, B and C)

20. Chassis/body construction : ~~separate~~ / unitary construction

21. Unitary construction, material(s) Steel.

SEPARATE CONSTRUCTION - MATERIALS

22. Chassis - 23. Coachwork Steel.

24. Number of doors 2 Material(s) Steel.

25. Bonnet Steel 26. Boot Lid Steel.

27. Rear Window Safety Glass. 28. Windscreen Safety Glass.

29. Front door windows Safety Glass. 30. Rear door windows nil.

31. Sliding system of door windows Vertical winding.

32. Material(s) of rear-quarter light Safety Glass.

ACCESSORIES AND UPHOLSTERY

38. Interior heating : yes - ~~no~~ 39. Air conditioning : ~~yes~~ - no

40. Ventillation : yes - ~~no~~

41. Front seats, type of upholstery Ambla.

42. Weight of front seat(s), complete with supports and rails, out of the car:

8.391 kg. 18.5 lbs.

43. Rear seats, type of upholstery Ambla.

44. Front bumper, material(s) Steel 3.161 Weight 3.161 kg. 6.969 lbs.

45. Rear bumper, material(s) Steel 3.054 Weight 3.054 kg. 6.734 lbs.

WHEELS

50. Type Pressed steel ventilated Disc.

51. Weight (per wheel, without tyre) 4.763 kg. 10.5 lbs.

52. Method of attachment 4 stud.

53. Rim diameter 305 mm. 12 ins.

54. Rim width 114.3 mm. 4.5 ins.

STEERING

60. Type Rack and Pinion.

61. Servo-assistance : yes - no

62. Number of turns of steering wheel from lock to lock 2.62

63. In case of servo-assistance. nil.



SUSPENSION

- 70. Front suspension (photograph D), type Independent Swing Axle.
- 71. Type of spring Coil.
- 72. Stabiliser (if fitted) Nil.
- 73. Number of shock absorbers 2 74. Type Telescopic.
- 78. Rear suspension (photograph E), type Independent Trailing Arm.
- 79. Type of spring Coil.
- 80. Stabiliser (if fitted) nil.
- 81. Number of shock absorbers 2 82. Type Telescopic.

BRAKES (photographs F and G)

- 90. Method of operation Hydraulic.
- 91. Servo-assistance (if fitted), type nil.
- 92. Number of hydraulic master cylinders 1.

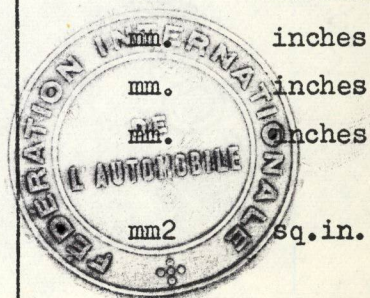
	FRONT	REAR
93. Number of cylinders per wheel	2	1
94. Bore of wheel cylinder(s)	17.78 mm. 0.70 inches	19.05 mm. 0.75 inches

Drum Brakes

95. Inside diameter	203.2 mm. 8 inches	203.2 mm. 8 inches
96. Length of brake linings	159.5 mm. 6.28 inches	159.5 mm. 6.28 inches
97. Width of brake linings	38.1 mm. 1.5 inches	38.1 mm. 1.5 inches
98. Number of shoes per brake	mm. 2 inches	mm. 2 inches
99. Total area per brake	605 mm ² 218.8 sq.in.	605 mm ² 218.8 sq.in.

Disc Brakes

100. Outside diameter	mm. inches	mm. inches
101 Thickness of disc	mm. inches	mm. inches
102 Length of brake linings	mm. inches	mm. inches
103 Width of brake linings	mm. inches	mm. inches
104 Number of pads per brake		
105 Total area per brake	mm ² sq.in.	mm ² sq.in.



ENGINE (photographs J and K)

130. Cycle 4 131. Number of cylinders 4
132. Cylinder Arrangement in line inclined at 45°
133. Bore 68 mm. 2.677 in. 134. Stroke 60.375 mm. 2.377 in.
135. Capacity per cylinder 218.75 cm³ 13.35 cu.in.
136. Total cylinder capacity 875 cm³ 53.4 cu.in.
137. Material(s) of cylinder block Aluminium.
138. Material(s) of sleeves (if fitted) Cast iron.
139. Cylinder head, material(s) Aluminium. Number fitted 1.
140. Number of inlet ports 4 141. Number of exhaust ports 4
142. Compression ratio 10 : 1
143. Volume of one combustion chamber 20.33 cm³ 1.24 cu.in.
144. Piston, material Aluminium 145. Number of rings 3
146. Distance from gudgeon pin centre line to highest point of piston crown
27.80 mm. 1.055 in.
27.67 mm. 1.050 in.
147. Crankshaft : ~~moulded~~ / Stamped 148. Type of crankshaft : integral/..Yes...
149. Number of crankshaft main bearings 3
150. Material of bearing cap Aluminium.
151. System of lubrication : ~~dry-sump~~ / oil in sump
152. Capacity, lubricant 3.1 ltrs. 5.5 pts. 3.3 Quarts U.S.
153. Oil cooler : yes / no 154. Method of engine cooling Water.
155. Capacity of cooling system 6.2 ltrs. 11 pts. 6.6 quarts U.S.
156. Cooling fan (if fitted) dia. 25.2 cm. 9.94 in.
157. Number of blades of cooling fan 9

Bearings

158. Crankshaft main, type steel back lead _{bronze}. Dia. 47.62 mm. 1.875 in.
159. Connecting rod, big end lead indium _{overlay}. Dia. 41.27 mm. 1.625 in.

Weights

160. Flywheel (clean) with starter ring. 6.691 lbs.
161. Flywheel with clutch (all turning parts). 9.072 lbs.
162. Crankshaft 8.959 kg. 19.75 lbs. 163. Connecting rod 0.484 kg. 1.07 lbs.
164. Piston with rings and pin 0.259 kg. 0.572 lbs.



FOUR STROKE ENGINES

- 170. Number of camshafts 1 171. Location Overhead.
- 172. Type of camshaft drive Roller chain.
- 173. Type of valve operation Direct Tappet.

INLET (see page 4)*

- 180. Material(s) of inlet manifold Aluminium
- 181. Diameter of valves 30.582 mm. 1.204 ins.
- 182. Max. valve lift 6.165 mm. 0.2427 in. 183. Number of valve springs 1
- 184. Type of spring coil. 185. Number of valves per cylinder 1
- 186. Tappet clearance for checking timing (cold) .102 - .152 mm. 0.004 - .006 ins.
- 187. Valves open at (with tolerance for tappet clearance indicated) 6° B.T.D.C.
- 188. Valves close at (with tolerance for tappet clearance indicated) 46° A.B.D.C.
- 189. Air filter, type Dry Element.

EXHAUST (see page 4)

- 195. Material(s) of exhaust manifold Cast iron.
- 196. Diameter of valves 27.086 mm. 1.006 ins.
- 197. Max. valve lift 6.114 mm. 0.2407 in. 198. Number of valve springs 1
- 199. Type of spring Coil. 200. Number of valves per cylinder 1
- 201. Tappet clearance for checking timing (cold) 0.152 mm. 0.006 ins.
0.203 mm. 0.008 ins.
- 202. Valves open at (with tolerance for tappet clearance indicated) 46° B.B.D.C.
- 203. Valves close at (with tolerance for tappet clearance indicated) 6° A.B.D.C.

CARBURETION (photograph N)

- 210. Number of carburettors fitted 1 211. Type Semi downdraft.
- 212. Make Solex 213. Model 30 P.1 H 15
- 214. Number of mixture passages per carburettor 4 Circuits: Pilot, Pump, Main & Econostat.
- 215. Flange hole diameter of exit port(s) of carburettor 30 mm. 1.181 ins.
- 216. Minimum diameter of venturi/~~minimum diam., with piston at maximum height~~
22 mm. 0.866 ins.
- INJECTION (if fitted) nil.

- 220. Make of pump 221. Number of plungers
- 222. Model or type of pump 223. Total number of injectors
- 224. Location of injectors
- 225. Minimum diameter of inlet pipe mm. ins.

* For additional information concerning two-stroke engines and super-charged engines, see page 13.



Make

Singer.

Model

Chamois Mk.11.F.I.A. Rec.no.

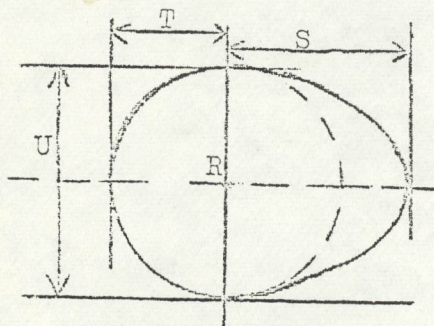
5022

ENGINE ACCESSORIES

- 230. Fuel pump : mechanical and/or electric.
- 231. No.fitted 1
- 232. Type of ignition system Coil
- 233. No.of distributors 1
- 234. No. of ignition coils 1
- 235. No. of spark plugs per cylinder 1
- 236. Generator, number fitted 1
- 237. Method of drive Belt.
- 238. Voltage of generator 12 volts.
- 239. Battery, number 1
- 240. Location In engine compartment.
- 241. Voltage of battery 12 volts

ENGINE AND CAR PERFORMANCES (as declared by manufacturer in catalogue)

- 250. Max. engine output 42 (type of horsepower:) at 5000 rpm
- 251. Max. rpm 6500 output at that figure not available for publication.
- 252. Max torque 55.6 at 2800 rpm
- 253. Max speed of the car 128 km/hour 80 miles/hour



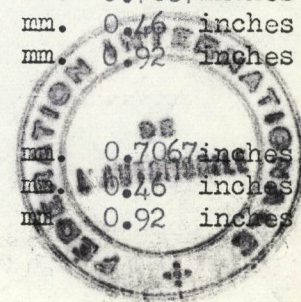
R = centre of camshaft.

Inlet cam

- S = 17.950 mm. 0.7067 inches
- T = 11.684 mm. 0.46 inches
- U = 23.368 mm. 0.92 inches

Exhaust cam

- S = 17.950 mm. 0.7067 inches
- T = 11.684 mm. 0.46 inches
- U = 23.368 mm. 0.92 inches



Make Singer.

Model Chamois Mk.11.

F.I.A. Rec.no. 5022

DRIVE TRAIN

CLUTCH

- 260. Type of clutch Diaphragm.
- 261. No of plates 1
- 262. Dia. of clutch plates 15.875 cm. 6.25 ins..
- 263. Dia. of linings, inside 10.795 cm. 4.25 ins.
- outside 15.875 cm. 6.25 ins.
- 264. Method of operating clutch Hydraulic.

GEAR BOX (photograph H)

- 270. Manual type, make Rootes.
- 271. No. of gear-box ratios forward 4.
- 272. Synchronized forward ratios 4.
- 273. Location of gear-shift Centre floor.
- 274. Automatic, make none type -
- 275. No. of forward ratios -
- 276. Location of gear shift -

277.	Manual		Automatic		Alternative manual / automatic			
	Ratio	No.teeth	Ratio	No.teeth	Ratio	No.teeth	Ratio	No.teeth
1	3.416	41/12			3.416	41/12		
2	1.831	33/18			1.831	33/18		
3	1.174	28/24			1.273	22/28		
4	0.851	23/27			0.923	26/24		
5								
6								
re-verse	2.841	37/13			2.841	37/13		

- 278. Overdrive, type nil.
- 279. Forward gears on which overdrive can be selected -
- 280. Overdrive ratio -

FINAL DRIVE

- 290. Type of final drive Hypoid.
- 291 Type of differential Bevel Gear.
- 292. Type of limited slip differential (if fitted) nil.
- 293. Final drive ratio 4.857 : 1
- Number of teeth 7 - 34



IMPORTANT - The conformity of the car with the following items of the present recognition form is to be disregarded during the scrutineering, when the vehicle has been entered in group 2 (Touring cars) or 3 (Grand Touring cars): 41, 72, 80, 91, 142, 143, 144, 145, 146, 153, 156, 157, 160, 161, 162, 163, 164, 182, 184, 186, 187, 188, 189, 199, 201, 202, 203, 212, 213, 215, 216, 222, 225, 230, 250, 251, 252, 253, and photographs I, M and N.

During the scrutineering of cars entered in group 4 (sportscars) only the following items of the present recognition form are to be taken into consideration: 1,2,3,9,20, 21, 22, 23, 24, 25, 26, 70, 71, 78, 79, 90, 130, 131, 132, 133, 134, 135, 136, 137, 138, 139, 140, 141, 147, 148, 149, 150, 158, 159, 170, 171, 172, 173, 185, 200, 270, 271, 274, 275, 290, 291, 292 and photographs A, B, D, E, F, G, H, J, K and O.

The vehicle described in this form has been subject to the following amendments:

on. 1/2...1966 rec.no. 5022 List. N°2 on.....19.. rec.no.....List.....
on. 1/11/...1967 rec.no. 5022 List. 16/6 on.....19.. rec.no.....List.....
on.....19.. rec.no.....List.....on.....19.. rec.no.....List.....
on.....19.. rec.no.....List.....on.....19.. rec.no.....List.....
on.....19.. rec.no.....List.....on.....19.. rec.no.....List.....

Optional equipment affecting preceding information. This to be stated together with reference number.

1. Wheels: Part No. 7096101. ← Only valid in group 2.
 50. Type. Magnesium Alloy ventilated.
 51. Weight. (per wheel, without tyres.) 3.629 Kgs. 8 lbs.
 52. Method of Attachment. 4 Stud.
 53. Rim dia. 305 mm. 12 in.
 54. Rim width. 127 mm. 5 in.

No resulting increase in front or rear tracks caused by use of the alternative magnesium wheels.

2. Title.
The car is marketed under "Sunbeam Chamois" in certain European Export Markets.



ADDITIONAL INFORMATION FOR CARS FITTED WITH TWO-CYCLE ENGINES

System of cylinder scavenging

Type of lubrication

Size of inlet port :

Length measured around cylinder wall mm.

Height mm. Area mm²

Size of exhaust port:

Length measured around cylinder wall mm.

Height mm. Area mm²

Size of transfer port:

Length measured around cylinder wall mm.

Height mm. Area mm².

Size of piston port:

Length measured around piston mm.

Height mm. Area mm²

Method of pre-compression

Bore and stroke of pre-compression cylinder, if fitted mm.

Distance from top of cylinder block to lowest point of inlet port mm.

Distance from top of cylinder block to highest point of exhaust port mm.

Distance from top of cylinder block to highest point of transfer port mm.

Drawing of cylinder ports

Supercharger, if fitted

Make

Model, or Type No.

Type of Drive

Ratio of Drive

Fuel Injection, if fitted

Make of Pump

Model or Type No.

Make of injectors

Model or Type No.

Location of injectors



CHAMOIS MARK IIFEDERATION INTERNATIONALE DE L'AUTOMOBILESupplement to Form of Recognition

Manufacturer: Rootes Group,
Singer Motors Limited.

Model: Singer Chamois Mk. II.

Optional equipment affecting preceding information. This is to be stated together with reference number.

CAPACITIES AND DIMENSIONS

7. Long Range Fuel Tank (Group II Option only). Part No. 7103359

Capacity of fuel tank (reserve included)

45 ltrs. 12.009 Gall.US. 10 Gall.Imp.



CHAMOIS 875 Mk. 2.

FEDERATION INTERNATIONALE DE L'AUTOMOBILE.
SUPPLEMENT TO FORM OF RECOGNITION.

Manufacturer: Rootes Group.

Model: Singer Chamois Mk 2.

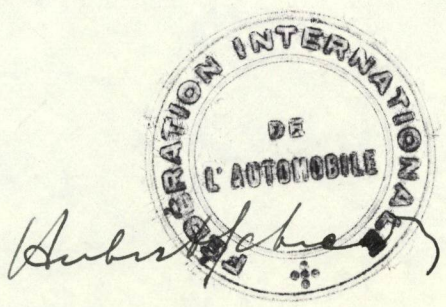
Optional equipment affecting the preceding information.

CAPACITIES AND DIMENSIONS.

- Wheels. Part No. 7096101/A.
- 50. Type: Magnesium alloy ventilated.
- 51. Weight: (per wheel without tyre)
- 52. Method of Attachment: 4 Stud.
- 53. Rim Diameter: 305 mm 12 inches.
- 54. Rim Width: 114.3 mm 4.488 inches.

No resulting increase in front or rear tracks caused by use of alternative wheels.

Valid as from 1st Febr. 1966.
Rust 14/2





MOTOR SPORT DIVISION
The Royal Automobile Club,
31 Belgrave Square, London, S.W.1

Manufacturer Rootes Group

Model Singer Chamois Mk. II

F.I.A. Recognition No. 5022

Amendment No. 3 1/ET
3

Amendment to Form of Recognition

FEDERATION INTERNATIONALE DE L'AUTOMOBILE

No.

Reference No.

EVOLUTIONARY CHANGE

Centre pivot point of the front suspension unit was lowered on cars from the following serial numbers of chassis:

Singer Chamois Mk. II. B.73/2/017655

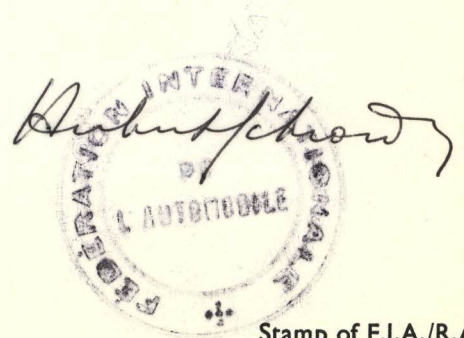
resulting in an increase in the front track measurement as follows:

CAPACITIES AND DIMENSIONS

2.

Front track: 1221.7 [±] 12.7 mm. 48.1 [±] 0.5 inches.

All other dimensions and specifications remain as listed in the Form of Recognition, 5022.



Date amendment is valid from 1st Nov/67

list 16/6

Stamp of F.I.A./R.A.C.



MOTOR SPORT DIVISION
The Royal Automobile Club,
31 Belgrave Square, London, S.W.1

Manufacturer Rootes Motors Ltd.

Model Singer Chamois.

F.I.A. Recognition No. 5022.

Amendment No. 4/2E

Amendment to Form of Recognition

FEDERATION INTERNATIONALE DE L'AUTOMOBILE

No.

Reference No.

EVOLUTIONARY CHANGES

PHOTO A
 $\frac{3}{4}$ front.



PHOTO B
 $\frac{3}{4}$ rear.



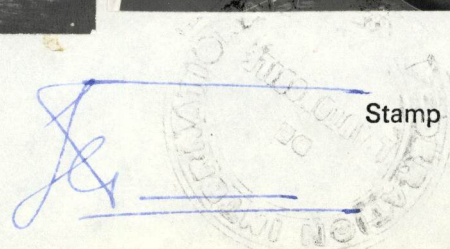
&

Photo C
interior.



Date amendment is valid from 1/4/70 - 70/4.

Stamp of F.I.A./R.A.C.





MOTOR SPORT DIVISION
The Royal Automobile Club,
31 Belgrave Square, London, S.W.1

Manufacturer Rootes Motors Ltd.

Model Singer Chamois.

F.I.A. Recognition No. 5022.

Amendment No. 4/2E

(2)

Amendment to Form of Recognition

FEDERATION INTERNATIONALE DE L'AUTOMOBILE

No.

Reference No.

EVOLUTIONARY CHANGES

2.	Front track :-	1245 ± 25mm,	49 ± 1 in.
		The average for this figure is with the pivot bolt at a height of 10½ ins, 267 mm, above the ground.	
4.	Overall length :-	353 cm.	139 in.
9.	Weight :- 692 kg.	1539 lbs.	13.72 cwts.
41.	Front seat type :-	Cushion frame.	
42.	Weight of front seat :-	9.5 kg.	21 lbs.
43.	Rear seat type :-	Cushion frame.	
187	Inlet valves open at :-	36° B.T.D.C.	
188	Inlet valves close at :-	76° A.B.D.C.	
201	Exhaust tappet clearance :-	0.011 in.	0.280 mm.
202	Exhaust valve opens at :-	43° B.B.D.C.	
203	Exhaust valve closes at :-	3° A.T.D.C.	
277	Number of teeth on third gear :-	27 / 23.	

Date amendment is valid from 1/4/70 - 70/6.

Stamp of F.I.A./R.A.C.



MOTOR SPORT DIVISION
The Royal Automobile Club,
31 Belgrave Square, London, S.W.1

Manufacturer Rootes Motors
Model SINGER CHAMOS
F.I.A. Recognition No. 5022
Amendment No. B. 4/2E

Amendment to Form of Recognition

FEDERATION INTERNATIONALE DE L'AUTOMOBILE

No. Reference No. EVOLUTIONARY CHANGE

277. Alternative manual gear ratios, Group 1.

<u>Ratio.</u>	<u>Teeth.</u>	<u>Gear.</u>
3.076	40 / 13	1st.
1.831	33 / 18	2nd.
1.273	28 / 22	3rd.
0.923	24 / 26	4th.
2.841	37 / 13	Reverse.

This is the alternative gear ratio set for all cars from 1969 onwards.

Date amendment is valid from 1/4/70 to 4.

Stamp of F.I.A./R.A.C.



MOTOR SPORT DIVISION
The Royal Automobile Club,
31 Belgrave Square, London, S.W.1

Manufacturer Rootes Motors Ltd.
Model SINGER CHAMOIS
F.I.A. Recognition No. 5022
Amendment No. 5/3V GR II

Amendment to Form of Recognition

FEDERATION INTERNATIONALE DE L'AUTOMOBILE

No.

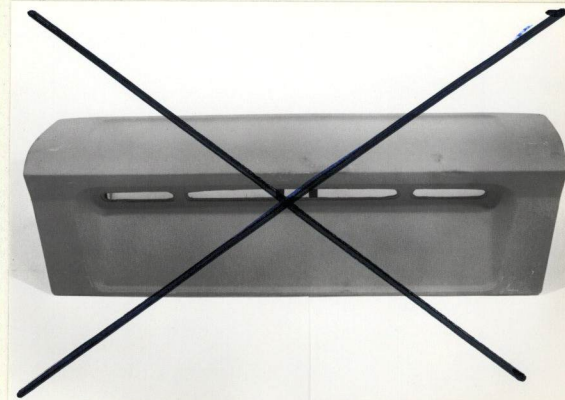
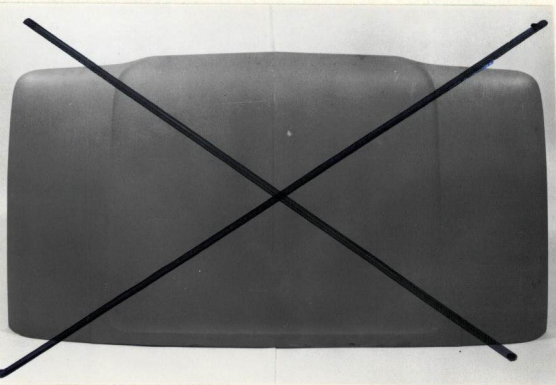
Reference No.

OPTIONAL EXTRAS (Not valid in Group 1)

~~FRONT GLASS BUMPER, CTS 1703.~~

~~FRONT GLASS BOOTLID, CTS 1701.~~

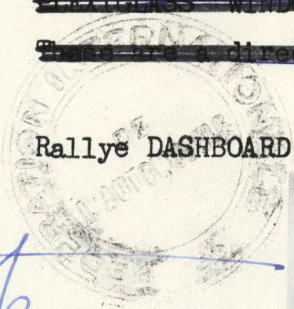
~~These parts do not change the appearance of the car in any way.~~



~~FRONT GLASS WINDOWS, CTS 1703.~~

~~These are a direct replacement for the standard units.~~

Rallye DASHBOARD UNIT, CTS 1502/3/5/6/7.



[Handwritten signature]

Date amendment is valid from 1/1/76

Stamp of F.I.A./R.A.C.

70-4



MOTOR SPORT DIVISION
The Royal Automobile Club,
31 Belgrave Square, London, S.W.1

Manufacturer Rootes Motors Ltd.
Model SINGER CHAMOIS
F.I.A. Recognition No. 5022
Amendment No. 6/AV - G. II

Amendment to Form of Recognition

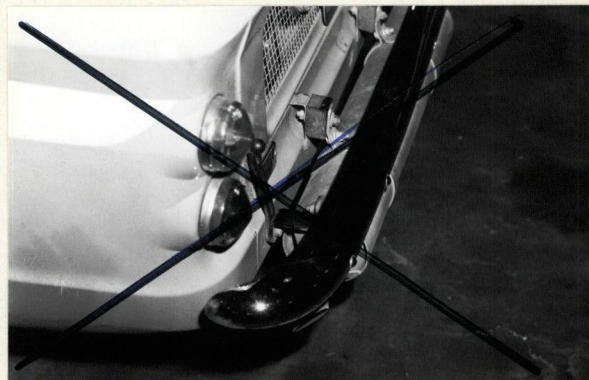
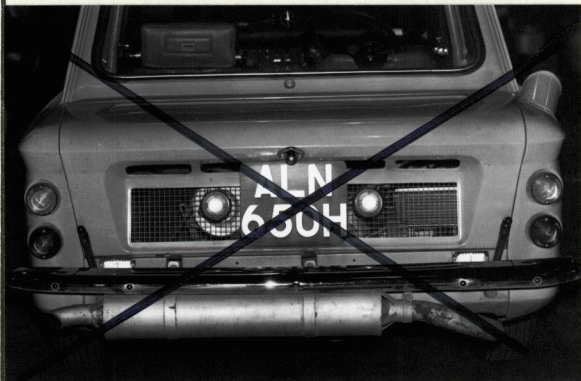
FEDERATION INTERNATIONALE DE L'AUTOMOBILE

No.

Reference No.

OPTIONAL EXTRAS (NOT VALID IN GROUP 1)

- ~~Modified Rear Bumper and Silencer Mountings, CTS 1057 - 2 off,
CTS 1058 - 2 off,~~
4. ~~Overall length of car :- 359.5 cm, 141.6 in.~~



~~MODIFIED CRANKSHAFT, CTS 1005~~

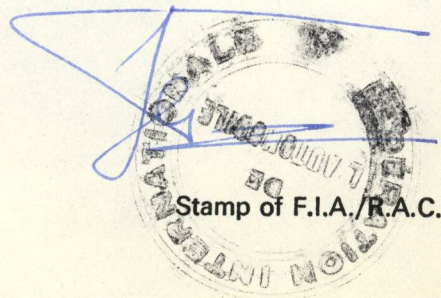
~~There to be change in dimensions or weight of this item.~~

COMPETITION DRIVE SHAFT COUPLINGS, CTS 1104.

This is a stronger version of the original item, and it has 12 inserts instead of the normal 6 inserts.

Date amendment is valid from.....

1/4/70 - 70/1A.





MOTOR SPORT DIVISION
The Royal Automobile Club,
31 Belgrave Square, London, S.W.1

Manufacturer Rootes Motors Ltd.

Model SINGER CHAMOIS

F.I.A. Recognition No. 5022

Amendment No. 7/55

GRII

Amendment to Form of Recognition

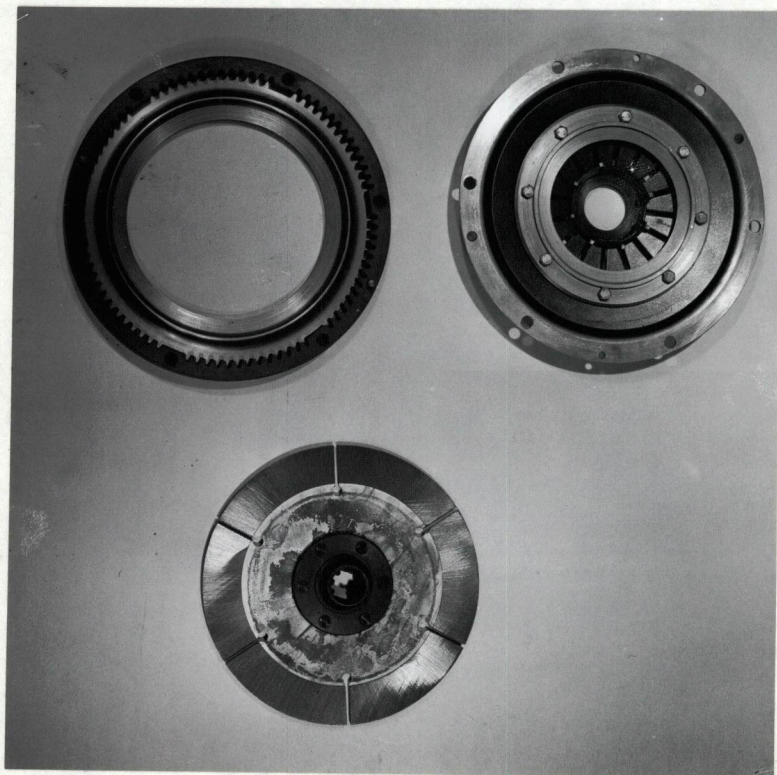
FEDERATION INTERNATIONALE DE L'AUTOMOBILE

No.

Reference No.

OPTIONAL EXTRAS (Not valid in Group 1)

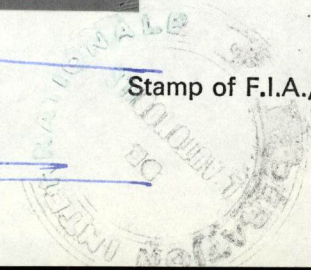
- SINTERED RACING CLUTCH, CTS 1063.
260. Diaphragm Clutch.
261. No of plates :- 1
262. Diameter of plate :- 18.4 cm. 7.25 in.
263. Lining diameter :- I.D. 13.3 cm. 5.25 in.
O.D. 18.4 cm. 7.25 in.
264. Hydraulic Operation.



Date amendment is valid from 1/4/70 - 30/4.

[Handwritten signature]

Stamp of F.I.A./R.A.C.





MOTOR SPORT DIVISION
The Royal Automobile Club,
31 Belgrave Square, London, S.W.1

Manufacturer Rootes Motors Ltd.

Model SINGER CHAMOIS

F.I.A. Recognition No. 5022

Amendment No. 8/BV-SET

Amendment to Form of Recognition

FEDERATION INTERNATIONALE DE L'AUTOMOBILE

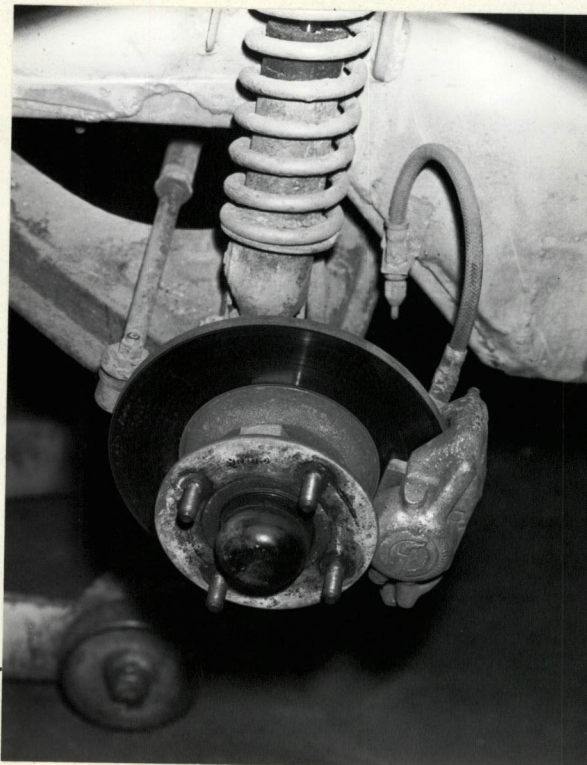
No.

Reference No.

OPTIONAL EXTRAS (Not valid for group 1)

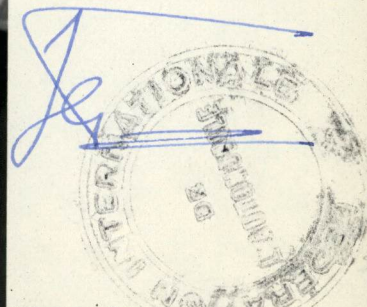
FRONT WHEEL DISC BRAKE SET, CTS 1304.

94.	Bore of wheel cylinders :-	4.28 cm.	1.685 in.
100.	Outside diameter of disc :-	21.35 cm.	8.4 in.
101.	Thickness of disc :-	0.964 cm.	0.380 in.
102.	Length of pad lining :-	6.02 cm.	2.38 in.
103.	Width of pad lining :-	4.30 cm.	1.70 in.
104.	Number of pads per brake :-	2	
105.	Total area per brake :-	48 cm ² .	7.42 in ² .
2.	Front Track :-	Increase of 3.5 cm.	1.4 in.



Date amendment is valid from 1/4/70

70/4.



Stamp of F.I.A./R.A.C.



MOTOR SPORT DIVISION
The Royal Automobile Club,
31 Belgrave Square, London, S.W.1

Manufacturer Rootes Motors Ltd.

Model SINGER CHATEAU

F.I.A. Recognition No. 5022

Amendment No. 9/7V GR II

Amendment to Form of Recognition

FEDERATION INTERNATIONALE DE L'AUTOMOBILE

No.

Reference No.

OPTIONAL EXTRA (NOT VALID IN GROUP I.)

WHEEL ARCH EXTENSIONS CTS/1704

These increase the width of the car
by 5 cm. each side.

5.

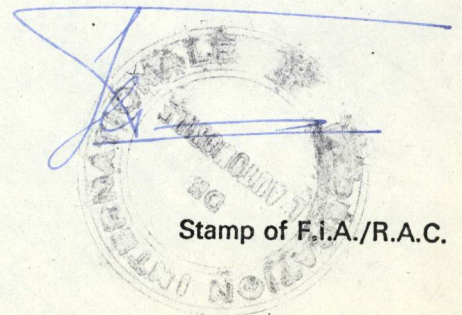
Overall width of the car 163.0 cm. 64.2"

~~WHEEL ARCH EXTENSIONS CTS/1704~~

~~This replaces the main panel of the
single cover~~



Date amendment is valid from 1/1/70 - 7/1/71



Stamp of F.I.A./R.A.C.