



F.I.A. Recognition No.

3054

Group

3

FISA - Transfert en Gr.B

ROYAL AUTOMOBILE CLUB

31, Belgrave Square, London, S.W.1

Form of recognition in accordance with appendix J to the International Sporting Code of the
FEDERATION INTERNATIONALE DE L'AUTOMOBILE

Triumph Motors
Manufacturer British Leyland (UK) Ltd.
Serial No. of chassis/body FD1 onwards
Serial No. of engine FD1E onwards
Recognition is valid from

Cylinder-capacity 1296 cm.³ 79.2 in.³
Model Spitfire
Manufacturer Triumph Motors
Manufacturer Triumph Motors
List

The manufacturing of the model described in this recognition form started on 10th January 1967
and the minimum production of 1000 identical cars, in accordance with the specifications of
this form was reached on 25th February 1967

Photograph A, 1/4 view of car from front



F.I.A. Stamp

R.A.C. Stamp

Make... **TRIUMPH**

Model... **SPITFIRE Mk 11**

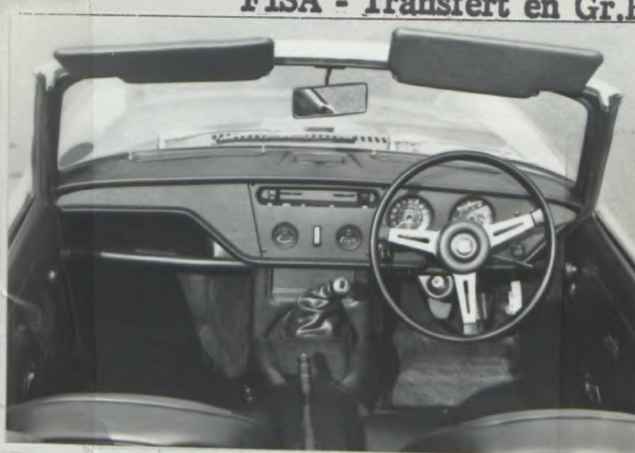
F.I.A. Rec. No. **3054**

FISA - Transfert en Gr.B

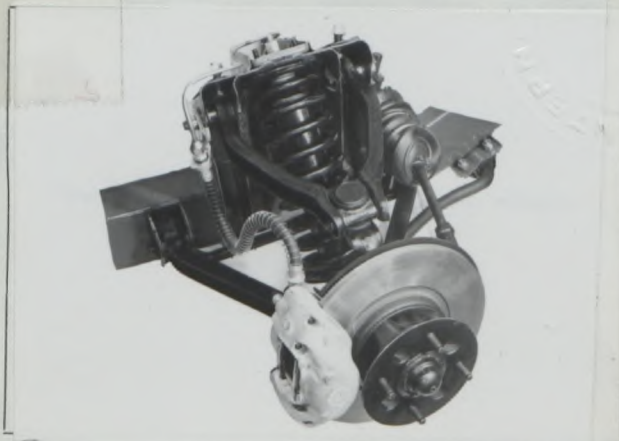
B



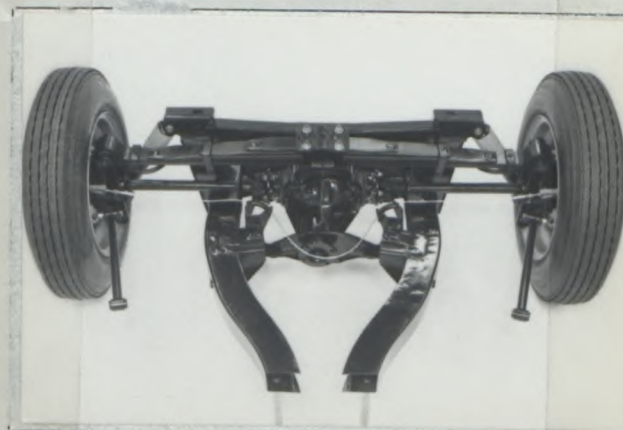
C



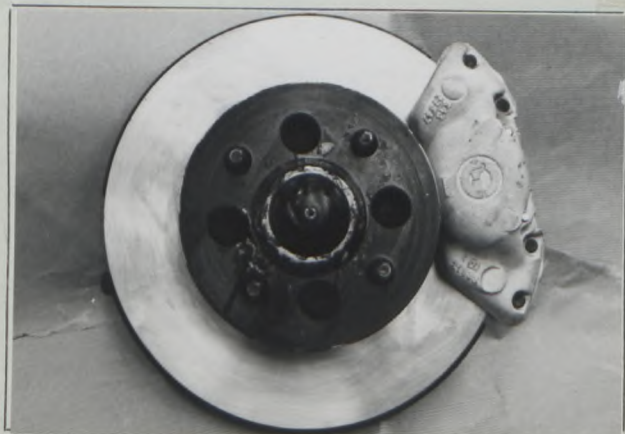
D



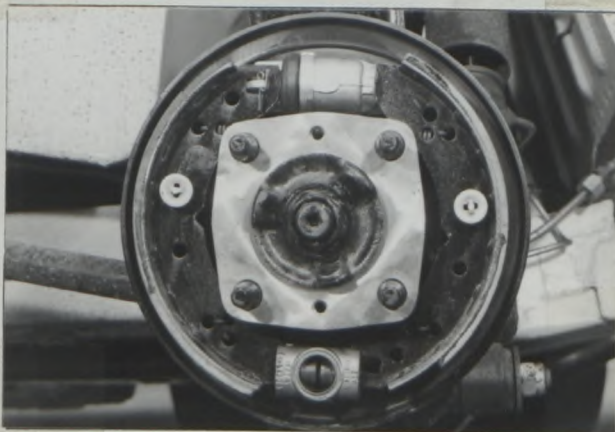
E



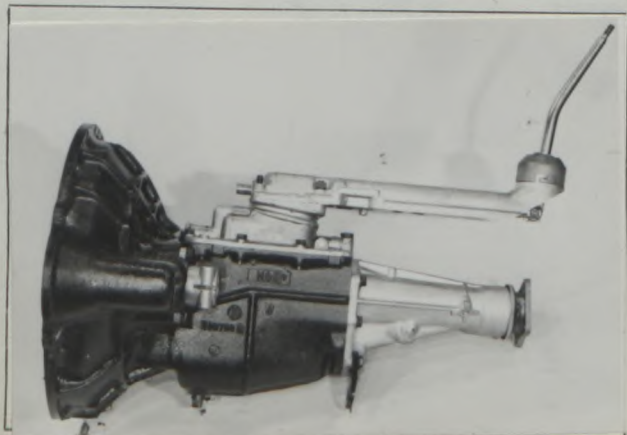
F



G



H



I



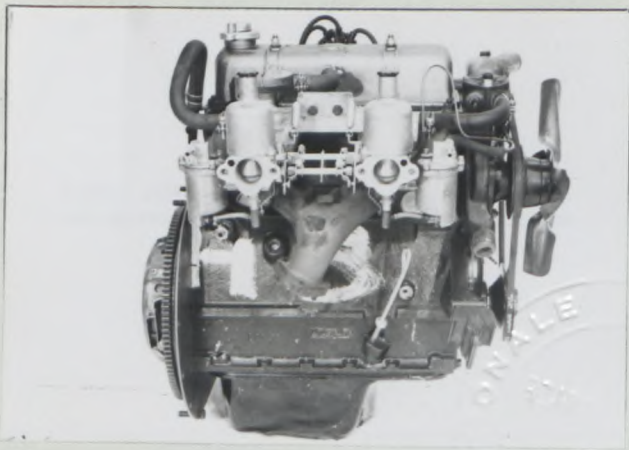
Make TRIUMPH

Model SBITFIRE Mk 111

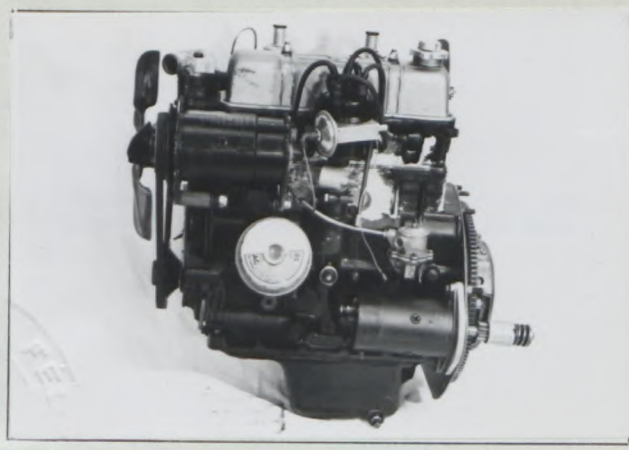
F.I.A. Rec. No. 3054

FISA - Transfert en Gr.B

J



K



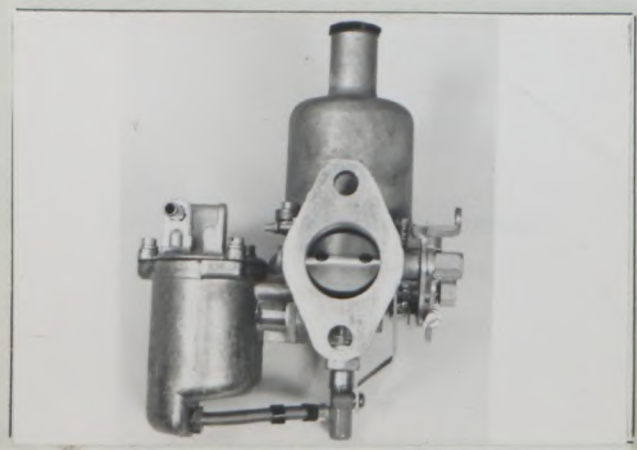
L



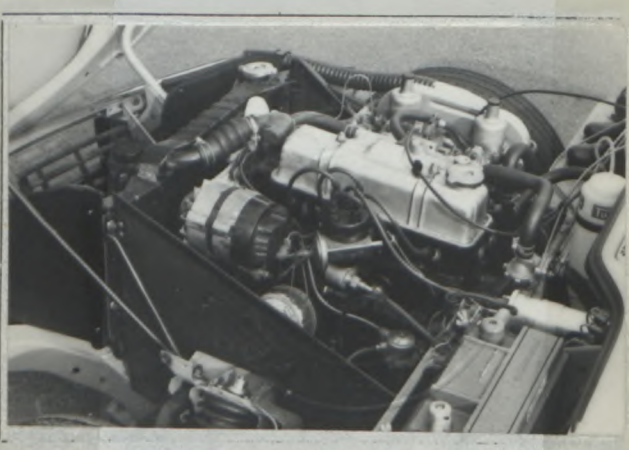
M



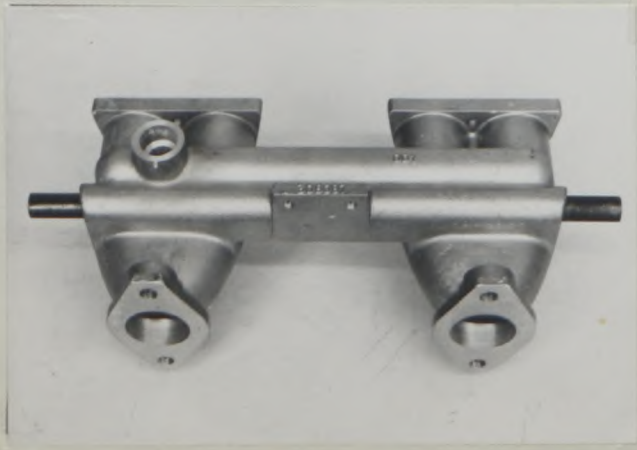
N



O



P



Q



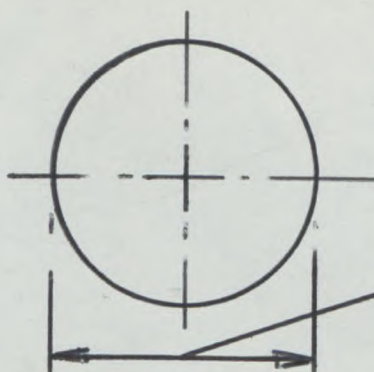
Make TRIUMPH

Model SPITFIRE Mk 111

F.I.A. Rec. No. 3054

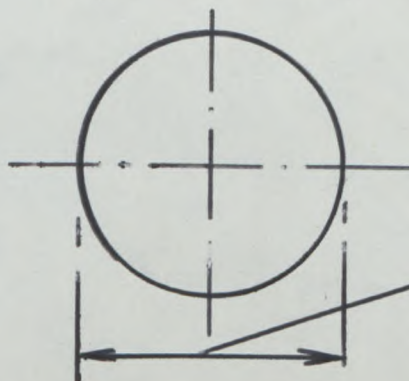
FISA - Transfert en Gr.B

Drawing inlet manifold ports, side of cylinderhead. Indicate scale or dimensions and manufacturing tolerance.



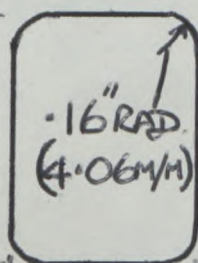
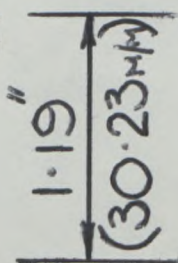
1.25" DIA ± 0.010 "
(31.75mm $\pm .254$ mm)

Drawing of entrance to inlet port of cylinderhead. Indicate scale or dimensions and manufacturing tolerance.



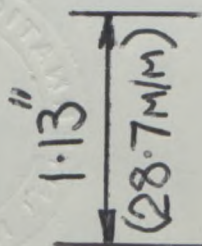
1.25" DIA ± 0.010 "
(31.75mm $\pm .254$ mm)

Drawing of exhaust manifold ports, side of cylinderhead. Indicate scale or dimensions and manufacturing tolerance.



AS CAST. ALL BURRS & FLASHES FETTLED.

Drawing of exit to exhaust port of cylinderhead. Indicate scale or dimensions and manufacturing tolerance.



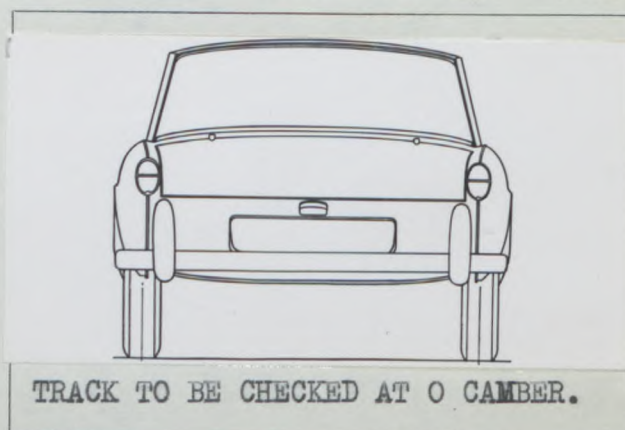
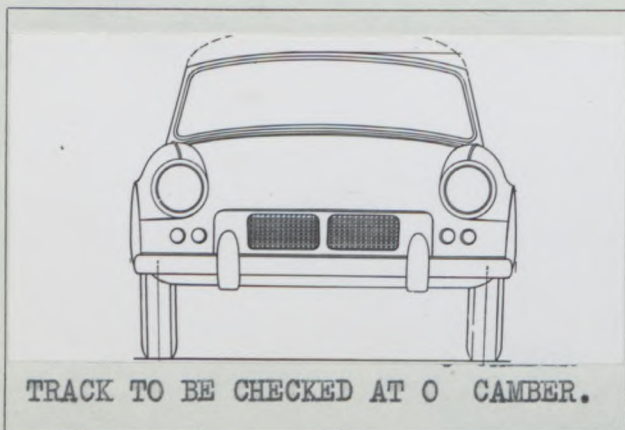
AS CAST. ALL BURRS & FLASHES FETTLED.

Make TRIUMPHModel SPITFIRE Mk 111F.I.A. Rec. No. 3054**FISA - Transfert en Gr.B****NOTE 1.**

All dimensions must be given in two measuring systems, see Note 3.

CAPACITIES AND DIMENSIONS

1. Wheelbase 2110 mm. 83 inches
2. Front track 1245 mm. 49 inches
3. Rear track 1270 mm. 50 inches



4. Overall length of the car 378,5 cm. 149 inches
5. Overall width of the car 148,8 cm. 58,5 inches
6. Overall height of the car (with hood.) 120.5 cm. 47.5 inches
7. Capacity of fuel tank (reserve included) 33 ltrs. 8,72 U.S. 7,25 gall. Imp.
8. Seating Capacity. 2
9. Weight. Total weight of the car with normal equipment, water, oil, and spare wheel but without fuel or repair tools:

SOFT TOP 734 kg. 1620 lbs.

HARD TOP 749 kg. 1652 lbs.

NOTE 2.

Differences in track caused by the use of other wheels with different rim widths must be stated when recognition is requested for the wheels concerned. Specify ground clearance in relation to the track and give drawing of two easily recognisable points at front and rear at which measurements are taken. These ground clearance dimensions are only for information when checking the track and can in no way affect the eligibility of the car.

NOTE 3.**CONVERSION TABLE**

1 inch/pouce	— 2.54	cm.	1 quart US	— 0.9464	ltrs.
1 foot/pied	— 30.4794	cm.	1 pint (pt)	— 0.568	ltrs.
1 sq. inch/pouce carre	— 6.452	cm. ²	1 gallon Imp.	— 4.546	ltrs.
1 cubic inch/pouce cube	— 16.387	cm. ³	1 gallon US	— 3.785	ltrs.
1 pound/livre (lb)	— 453.593	gr.	1 hundred weight (cwt.)	— 50.802	kg.

Make TRIUMPHModel SPITFIRE Mk 1.1.1F.I.A. Rec. No. 3054FISA - Transfert en Gr.B**CHASSIS AND COACHWORK** (Photographs A, B and C)

20. Chassis/body construction: separate ~~unitary construction~~
21. Unitary construction, material(s) N.A.
22. Separate construction, Material(s) of chassis STEEL (CENTRE BACKBONE)
23. Material(s) of coachwork STEEL (PRESSED)
24. Number of doors 2 Material(s) STEEL
25. Material(s) of bonnet STEEL
26. Material(s) of boot lid STEEL
27. Material(s) of rear-window VYBAK(SOFT TOP) GLASS(HARD TOP)
28. Material(s) of windscreen LAMINATED or ZONED GLASS
29. Material(s) of front-door windows GLASS
30. Material(s) of rear-door windows N.A.
31. Sliding system of door windows REMOTE WINDER
32. Material(s) of rear-quarter light N.A.

ACCESSORIES AND UPHOLSTERY

38. Interior heating : yes — ~~yes~~
39. Air conditioning : ~~yes~~ — no
40. Ventilation ~~yes~~ — no
41. Front seats, type of seat and upholstery ~~SEPERATE~~ (PVC)
42. Weight of front seat(s), complete with supports and rails, out of the car :
Each Seat ^{10.2} ~~10.2~~ kg. 22.5 lbs.
43. Rear seats, type of seat and upholstery N.A.
44. Front bumper, material(s) STEEL Weight 4.54 kg. 10 lbs.
45. Rear bumper, material(s) STEEL Weight 4.76 kg. 10.5 lbs. EACH SIDE

WHEELS

50. Type DISC (STEEL) 4 STUD.
51. Weight (per wheel, without tyre) 68 kg. 15 lbs.
52. Method of attachment 4 STUD & NUTS
53. Rim diameter 330.2 mm. 13 ins. 54. Rim width 114.2 mm. 4.5 ins.

STEERING

60. Type RACK & PINION.
61. Servo-assistance : ~~yes~~ — no
62. Number of turns of steering wheel from lock to lock 3.75
63. In case of servo-assistance N.A.

Make TRIUMPHModel SPITFIRE Mk. 111F.I.A. Rec. No. 3054FISA - Transfert en Gr.BSUSPENSION

70. Front suspension (photograph D), type INDEPENDANT BY DOUBLE WISHBONE.
71. Type of spring COIL
72. Stabiliser (if fitted) ANTI ROLL BAR
73. Number of shock absorbers 1 PER SIDE 74. Type HYDRAULIC TELESCOPIC.
78. Rear suspension (photograph E), type INDEPENDANT BY SWING AXLE.
79. Type of spring SINGLE MULTI LEAF TRANSVERSE SPRING, CENTRALLY PIVOTTED
80. Stabiliser (if fitted) N.A.
81. Number of shock absorbers 1 PER SIDE 82. Type HYDRAULIC TELESCOPIC

BRAKES (photographs F and G)

90. Method of operation HYDRAULIC
91. Servo-assistance (if fitted), type N.A.
92. Number of hydraulic master cylinders ONE.

93. Number of cylinders per wheel TWO
94. Bore of wheel cylinder(s) 48.05 mm. 1.893 inches

Drum Brakes

- | | FRONT | | REAR | |
|-------------------------------|------------------|---------|--------------------------|-------------|
| 95. Inside diameter | mm. | inches | 177.8 mm. | 7 inches |
| 96. Length of brake linings | mm. | inches | 154.9 mm. | 6.1 inches |
| 97. Width of brake linings | mm. | inches | 32.75 mm. | 1.25 inches |
| 98. Number of shoes per brake | | | 2 | |
| 99. Total area per brake | mm. ² | sq. in. | 21936.8 mm. ² | 34 sq. in. |

Disc Brakes

- | | | | | | | | |
|-------------------------------|-------|------------------|------|---------|--|------------------|---------|
| 100. Outside diameter | 228.6 | mm. | 9 | inches | | mm. | inches |
| 101. Thickness of disc | 9.53 | mm. | .375 | inches | | mm. | inches |
| 102. Length of brake linings | 59.1 | mm. | 2.33 | inches | | mm. | inches |
| 103. Width of brake linings | 42.9 | mm. | 1.69 | inches | | mm. | inches |
| 104. Number of pads per brake | | | 2 | | | | |
| 105. Total area per brake | 4820 | mm. ² | 7.5 | sq. in. | | mm. ² | sq. in. |

Make TRIUMPHModel SPITFIRE Mk 111F.I.A. Rec. No. 3054FISA - Transfert en Gr.B

T

ENGINE (photographs J and K)

130. Cycle FOUR STROKE 131. Number of cylinders 4
132. Cylinder Arrangement IN LINE.
133. Bore 73.7 mm. 2.9 in. 134. Stroke 76 mm. 2.992 in.
135. Capacity per cylinder 324 cm.³ 19.8 cu. in.
136. Total cylinder capacity 1296 cm.³ 79.2 cu. in.
137. Material(s) of cylinder block CHROMIUM IRON. 138. Material(s) of sleeves (if fitted) N.A.
139. Cylinder head, material(s) CAST IRON. Number fitted ONE.
140. Number of inlet ports FOUR 141. Number of exhaust ports FOUR
142. Compression ratio 9.05:1
143. Volume of one combustion chamber 34.13 cm.³ 2.08 cu. in.
144. Piston, material ALUMINIUM ALLOY 145. Number of rings THREE (3)
146. Distance from gudgeon pin centre line to highest point of piston crown 38.4 mm. 1.512 in.
147. Crankshaft: ~~XXXXXX~~/stamped 148. Type of crankshaft: integral/~~XXXXXX~~
149. Number of crankshaft main bearings THREE (3)
150. Material of bearing cap CHROMIUM IRON
151. System of lubrication: ~~XXXXXX~~/oil in sump
152. Capacity, lubricant 4.5 ltrs. 8 pts. 4.8 quarts U.S.
153. Oil cooler: yes/~~no~~ 154. Method of engine cooling WATER.
155. Capacity of cooling system 4.5 ltrs. 8 pts. 4.8 quarts U.S.
156. Cooling fan (if fitted) dia. 29.2 cm. 11.5 in.
157. Number of blades of cooling fan Seven (7)

Bearings

158. Crankshaft main, type SHELL. LEAD INDIUM. dia. 58,725 m.m. 2,3120 in.
159. Connecting rod big end, type die 47,638-47,625 mm dia. die 58,712 m.m. 2,3115 in.
- die 1.8755-1.8750 in.

Weights

160. Flywheel (clean) 6.8 kg. 14.75 lbs.
161. Flywheel with clutch (all turning parts) 9.89 kg. 21.80 lbs.
162. Crankshaft 13.6 kg. 30 lbs. 163. Connecting rod .456 kg. 1.327 lbs.
164. Piston with rings and pin .397 kg. .875 lbs.

Make (SPITFIRE) TRIUMPH

Model SPITFIRE Mk 111

F.I.A. Rec. No.

3054

FOUR STROKE ENGINES

170. Number of camshafts **ONE (1)** 171. Location **SIDE OF CYLINDER BLOCK.**
 172. Type of camshaft drive **CHAIN.**
 173. Type of valve operation **O.H.V. BY PUSHROD.**

INLET (see page 4)*

180. Material(s) of inlet manifold **ALUMINIUM ALLOY. +** 1,4375
 181. Diameter of valves **36,51** mm. **0,353** in. **1,4375** mm. **0,353** in.
 182. Max. valve lift **8,97** mm. **0,353** in. 183. Number of valve springs **TWO (2)**
 184. Type of spring **COIL** 185. Number of valves per cylinder **ONE (1)**
 186. Tappet clearance for checking timing (cold) **.381** mm. **.015** ins.
 187. Valves open at (with tolerance for tappet clearance indicated) **18°** **B.T.D.C.**
 188. Valves close at (with tolerance for tappet clearance indicated) **58°** **A.T.D.C.**
 189. Air filter, type **PAPER ELEMENT.**

EXHAUST (see page 4)*

195. Material(s) of exhaust manifold **CAST IRON +**
 196. Diameter of valves **29.7 - .0508** mm. **1.170 - .002** ins.
 197. Max. valve lift **0.349** mm. **0.349** in. 198. Number of valve springs **TWO (2)**
 199. Type of spring **COIL** 200. Number of valves per cylinder **ONE (1)**
 201. Tappet clearance for checking timing (cold) **.381** mm. **.015** ins.
 202. Valves open at (with tolerance for tappet clearance indicated) **58°** **b.b.d.c.**
 203. Valves close at (with tolerance for tappet clearance indicated) **18°** **a.t.d.c.**

CARBURETION (photograph N)

210. Number of carburettors fitted **TWO (2)** 211. Type **SIDEDRAUGHT.**
 212. Make **S.U.** 213. Model **H.S.2.**
 214. Number of mixture passages per carburettor **ONE. (1)**
 215. Flange hole diameter of exit port(s) of carburettor **31.75** mm. **1.25** ins.
 216. Minimum diameter of venturi/minimum diam., with piston at maximum height (example : SU)
22.6 mm. **.89** ins.

INJECTION (if fitted)**NOT APPLICABLE.**

220. Make of pump 221. Number of plungers
 222. Model or type of pump 223. Total number of injectors
 224. Location of injectors
 225. Minimum diameter of inlet pipe mm. ins.

* For additional information concerning two-stroke engines and super-charged engines, see page 13.

Make TRIUMPH

Model SPITFIRE Mk 111

F.I.A. Rec. No. 3054

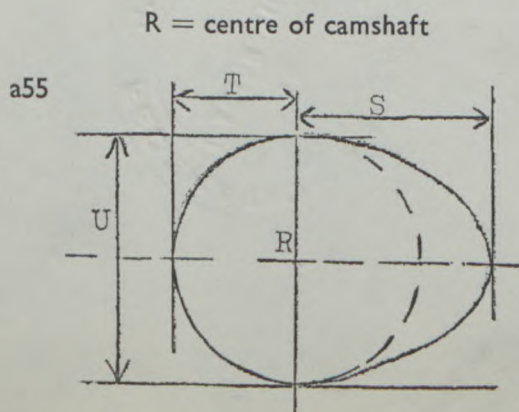
FISA - Transfert en Gr.B

ENGINE ACCESSORIES

230. Fuel pump : mechanical ~~and/or electrical~~
231. No. fitted ONE (1)
232. Type of ignition system COIL
233. No. of distributors ONE (1)
234. No. of ignition coils ONE (1)
235. No. of spark plugs per cylinder ONE (1)
236. Generator, type : alternator ~~dynamo/thermo~~ number fitted ONE (1)
237. Method of drive VEE BELT.
238. Voltage of generator 12 volts
239. Battery, number ONE (1)
240. Location UNDER BONNET ON SCUTTLE TRAY.
241. Voltage of battery 12 volts

ENGINE AND CAR PERFORMANCES (as declared by manufacturer in catalogue)

250. Max. engine output (type of horsepower:) at r.p.m.
251. Max. r.p.m. , output at that figure
252. Max. torque at r.p.m.
253. Max. speed of the car km./hour miles/hour



Inlet cam

S = 20,45 mm. 0,805 inches

T = 14,22 mm. 0,56 inches

U = 28,45 mm. 1,12 inches

Exhaust cam

S = 20,37 mm. 0,802 inches

T = 14,22 mm. 0,56 inches

U = 28,45 mm. 1,12 inches

Make TRIUMPHModel SPITFIRE Mk 111

F.I.A. Rec. No.

3054FISA - Transfert en Gr.B**DRIVE TRAIN****CLUTCH**

260. Type of clutch SPRING DIAPHRAGM 261. No. of plates ONE (1)
262. Dia. of clutch plates 16.5 cm. 6.5 ins.
263. Dia. of linings, inside 11.4 cm. 4.5 ins.
- outside 16.5 cm. 6.5 ins.
264. Method of operating clutch HYDRAULIC

GEAR BOX (photograph H)

270. Manual type, make TRIUMPH Method of operation MANUAL BY REMOTE LEVER.
271. No. of gear-box ratios forward FOUR (4) 272. Synchronized forward ratios THREE (3)
273. Location of gear-shift CENTRAL ON TRANSMISSION TUNNEL.
274. Automatic, make N.A. type
275. No. of forward ratios 276. Location of gear shift

	Manual		Automatic		Alternative manual/ automatic	
	Ratio	No. teeth	Ratio	No. teeth	Ratio	No. teeth
1	3.50	29/15			2.93	30/14
2	2.16	25/21			1.78	26/20
3	1.39	20/21			1.25	22/24
4	1.0	29/26			1.00	26/19
5		16				
6		33/15			2.93	30/14
reverse	3.83					

278. Overdrive, type LAYCOCK DE NORMANVILLE "D" TYPE.
279. Forward gears on which overdrive can be selected 3rd & TOP.
280. Overdrive ratio .802 : 1

FINAL DRIVE

290. Type of final drive HYPOID 291. Type of differential BEVEL GEAR
292. Type of limited slip differential (if fitted)
293. Final drive ratio 4.1 & 4.55 Number of teeth 9/37 & 9/41
- 3.83 11 9/35

Make TRIUMPH

Model SPITFIRE Mk 111

F.I.A. Rec. No. 3054

FISA - Transfert en Gr.B

IMPORTANT—The conformity of the car with the following items of the present recognition form is to be disregarded during the scrutineering, when the vehicle has been entered in group 2 (Touring cars) or 3 (Grand Touring cars) : 41, 72, 80, 91, 142, 143, 144, 145, 146, 153, 156, 157, 160, 161, 162, 163, 164, 182, 186, 187, 188, 189, 201, 202, 203, 212, 213, 215, 216 222, 225, 230, 250, 251, 252, 253, 255 photographs I, M and N and page 4.

During the scrutineering of cars entered in group 4 (Sportscars) only the following items of the present recognition form are to be taken into consideration : 1, 2, 3, 9, 20, 21, 22, 23, 24, 25, 26, 70, 71, 78, 79, 90, 130, 131, 132, 133, 134, 135, 136, 137, 138, 139, 140, 141, 147, 148, 149, 150, 158, 159, 170, 171, 172, 173, 185, 200, 270, 271, 274, 275, 290, 291, 292 and photographs A, B, D, E, F, G, H, J, K and O.

The vehicle described in this form has been subject to the following amendments :

on.....19.....	rec. no.....	List.....	on.....19.....	rec. no.....	List.....
on.....19.....	rec. no.....	List.....	on.....19.....	rec. no.....	List.....
on.....19.....	rec. no.....	List.....	on.....19.....	rec. no.....	List.....
on.....19.....	rec. no.....	List.....	on.....19.....	rec. no.....	List.....
on.....19.....	rec. no.....	List.....	on.....19.....	rec. no.....	List.....

Optional equipment affecting preceding information. This to be stated together with reference number.

ROAD WHEEL DETAIL NO. 30730

ROAD WHEEL DETAIL NO. 212304

STEEL DISC, 13" x 4.5" (330.2mm x 114.3mm).

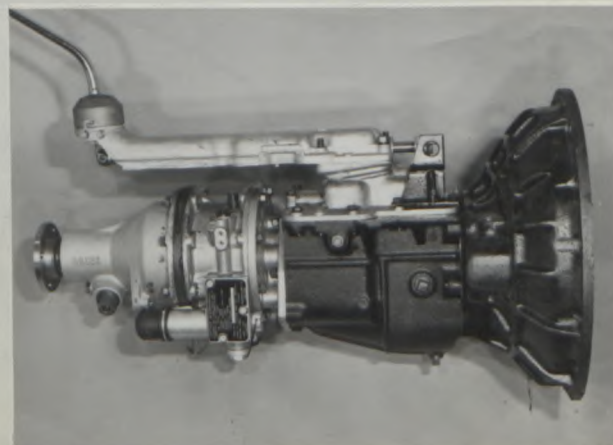
WEIGHT, 12 LBS (5.44KGS) NO TRACK CHANGE.

60 SPOKE WIRE WHEEL, 13" x 4.5 (330.2x114.3mm).

WEIGHT, 14 LBS (6.34KGS) NO TRACK CHANGE.

PHOTOGRAPH SHOWING OVERDRIVE FITTED.

GEARBOX DETAIL No 308201
Herd Top kit " " 88920641-2



Make TRIUMPH.
.....

Model SPITFIRE Mk 111
.....

~~SPITFIRE~~
F.I.A. Rec. No. 3054
.....

FISA - Transfert en Gr.B

Optional equipment affecting preceeding information. Together with reference number.

HARDTOP KIT.

DETAIL NO.

574413.



~~OVERALL LENGTH~~ ~~DETAIL NO.~~ ~~306142~~

~~DIMENSIONS~~

~~OVERALL LENGTH - 21.75" (55.25cm.)~~

~~OVERALL WIDTH - 24.41" (62.00cm.)~~

~~MATERIAL - 6.08cm (2.03 in) (S)~~



"valable en Groupe 4 uniquement"
"valid for Group 4 only"

