

# FÉDÉRATION INTERNATIONALE DE L'AUTOMOBILE

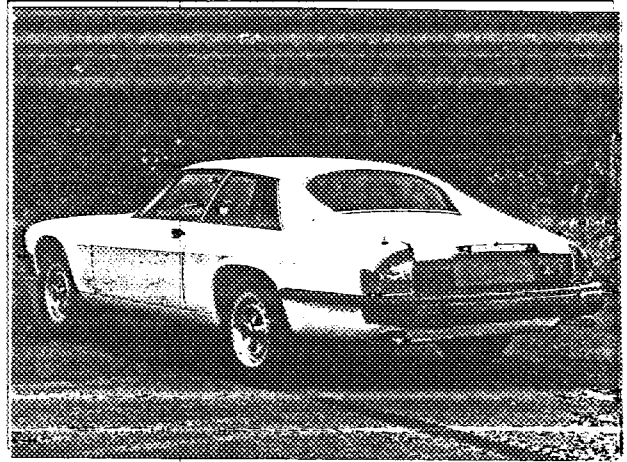
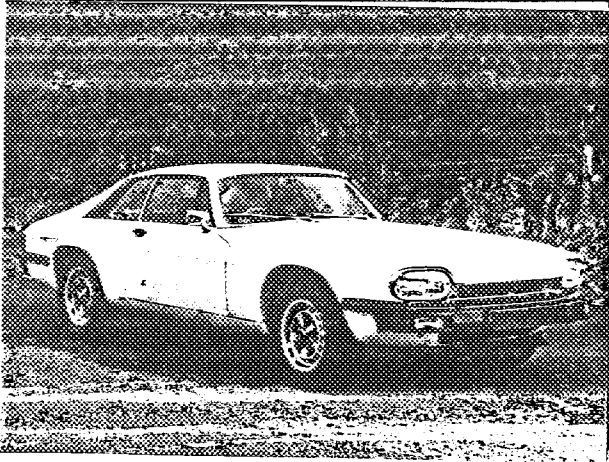
FICHE D'HOMOLOGATION CONFORME A L'ANNEXE J DU CODE SPORTIF INTERNATIONAL  
POUR LES VOITURES DES GROUPES 1 A 5

BOOK OF RECOGNITION IN ACCORDANCE WITH APPENDIX J TO THE INTERNATIONAL  
SPORTING CODE FOR CARS OF GROUPS 1 TO 5

Constructeur/Manufacturer LEYLAND CARS Modèle / Model JAGUAR XJS  
Cylindrée / Cylinder capacity 5343 cc  
Constructeur du châssis / Chassis Manufacturer LEYLAND CARS  
Constructeur du moteur / Engine Manufacturer LEYLAND CARS  
Homologation valable à partir du / Recognition valid as from 1 8. 77  
Modèle homologué en groupe TWO Numéro d'homologation 1688  
Model recognized in group

Photo A : voiture vue de 3/4 AV  
Photo A : 3/4 view of car from front

Photo B : voiture vue de 3/4 AR  
Photo B : 3/4 view of car from rear



## CARACTÉRISTIQUES GÉNÉRALES / GENERAL CHARACTERISTICS :

- |  |  |
|--|--|
| 1) Mode de construction : construction séparée / monocoque.<br>Type of car construction : separate / unitary construction. | <u>UNITARY</u>   |
| 2) Matériau du châssis <u>STEEL</u><br>Material of chassis   | Matériau de la carrosserie <u>STEEL</u><br>Material of coachwork                   |
| 3) Empattement droit <u>2591<sup>1</sup>/<sub>16</sub> / 102"</u><br>Wheelbase right                                       | Gauche <u>2591<sup>1</sup>/<sub>16</sub> / 102"</u><br>Left                        |
| 4) Largeur de la carrosserie mesurée aux axes AV<br>Width of bodywork measured at front axle                               | <u>1792.2<sup>2</sup>/<sub>16</sub> / 70.56"</u>                                   |
| 5) Largeur de la carrosserie mesurée aux axes AR<br>Width of bodywork measured at rear axle                                | <u>1798.5<sup>5</sup>/<sub>16</sub> / 70.81"</u>                                   |
| 6) Longueur hors-tout avec pare-chocs <u>4883<sup>3</sup>/<sub>16</sub> / 192.25"</u><br>Overall length with bumpers       | Sans pare-chocs <u>4597<sup>7</sup>/<sub>16</sub> / 180.98"</u><br>Without bumpers |
| 7) Type de suspension : AV <u>INDEPENDENT</u><br>Type of suspension : Front  | AR <u>INDEPENDENT</u><br>Rear  |

(Photo D)

Signature et cachet de  
l'autorité sportive nationale.

(Photo E)

Signature et cachet  
de la F.I.A.



NOTA : Les pages 1 à 7 comportent toutes les indications nécessaires à la vérification technique pour les Groupes 2 et 4.  
Pages 1 to 8 include all necessary information for the scrutineering of cars for Groups 2 and 4.

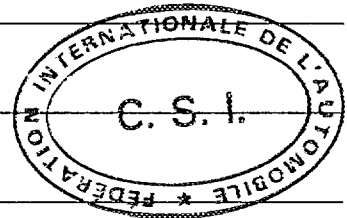
Marque / Make LEYLAND CARS Modèle / Model JAGUAR XJS N° \_\_\_\_\_

**MOTEUR :**

- 8) Cycle 4 STROKE
- 9) Nombre et disposition des cylindres V12  
Number and disposition of cylinders
- 10) Système de refroidissement WATER  
Cooling system
- 11) Emplacement et position du moteur FRONT LONGITUDINAL  
Location and position of engine
- 12) Matériau du bloc moteur ALUMINIUM  
Material of engine block
- 13) Roues motrices : AV - AR REAR  
Drive wheels : Front - Rear
- 14) Emplacement de la boîte de vitesses FRONT LONGITUDINAL - ATTACHED TO ENGINE  
Location of gear-box

**CARROSSERIE ET ÉQUIPEMENT INTÉRIEUR / COACHWORK AND INTERIOR**

- 20) Nombre de portes TWO  
Number of doors
- 21) Matériau des portes : AV STEEL AR \_\_\_\_\_  
Material of doors : Front \_\_\_\_\_ Rear \_\_\_\_\_
- 22) Matériau du capot moteur STEEL  
Material of bonnet
- 23) Matériau du capot coffre STEEL  
Material of boot lid
- 24) Matériau de la lunette AR GLASS  
Material of rear window
- 25) Matériau du pare-brise LAMINATED GLASS  
Material of windscreen
- 26) Matériau des glaces des portières AV GLASS  
Material of front door windows
- 27) Matériau des glaces des portières AR \_\_\_\_\_  
Material of rear door windows
- 28) Système d'ouverture des vitres portières AV ELECTRIC/MANUAL AR \_\_\_\_\_  
Sliding system of door windows Front \_\_\_\_\_ Rear \_\_\_\_\_
- 29) Matériau des glaces de custode GLASS  
Material of rear quarter lights
- 30) Poids siège (s) AV (enlevés de la voiture avec bossiers, glissières et supports) 15.03 kg/33.13 lbs  
Weight of front seat(s) (complete with supports and rails, out of the car)
- 31) Matériau du pare-choc AV STEEL/ALLOY/RUBBER Poids 13.27 kg/29.5 lbs  
Front bumper material Weight
- 32) Matériau du pare-choc AR STEEL/ALLOY/RUBBER Poids 14.85 kg/33 lbs  
Rear bumper material Weight
- 33) Ventilation : oui non / yes no. YES



Marque / Make LEYLAND CARS Modèle / Model JAGUAR XJS N° \_\_\_\_\_

**DIRECTION / STEERING**

40) Type RACK AND PINION  
 41) Servo-assistance YES

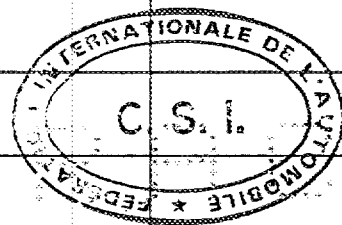
**SUSPENSION**

45) Suspension AV (photo D) Type de ressort COIL  
 Front suspension (photo D) Type of spring  
 46) Nombre d'amortisseurs TWO  
 Number of shock absorbers  
 47) Suspension AR (Photo E) Type de ressort COIL  
 Rear suspension (Photo E) Type of spring  
 48) Nombre d'amortisseurs TWO  
 Number of shock absorbers  
 49) Système de fixation des roues NUTS  
 Method of fixation of wheels

**FREINS - BRAKES**

50) Système HYDRAULIC  
 Method of operation  
 51) Servo frein (si prévu) Type : VACUUM  
 Servo assistance (if fitted) Type :  
 52) Nombre de maîtres-cylindres TANDEM  
 Number of master-cylinders

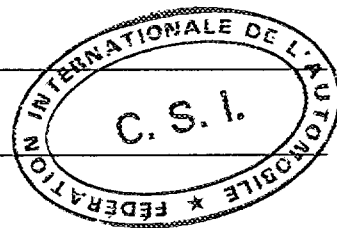
	AVANT / FRONT	ARRIERE / REAR
53) Nombre de cylindres par roue Number of cylinders per wheel	FOUR	TWO
54) Alésage Bore	48.188-48.108% 1.896-1.894"	42.90-42.85% 1.689-1.687"
<b>Freins à tambour / Drum brakes</b>		
55) Diamètre intérieur Inside diameter		
56) Nombre de mâchoires par frein Number of shoes per brake		
57) Surface de freinage par frein Total area per brake	61.214/61.468% 2.410/2.420"	44.96/43.94% 1.770/1.930"
<b>Freins à disques/Disc brakes</b>		
58) Largeur des sabots Width of brake linings		
59) Nombre de sabots par frein Number of pads per brake	TWO	TWO
60) Surface de freinage par frein Total area per brake	85870% <sup>2</sup> /133.1" <sup>2</sup>	61935% <sup>2</sup> /96" <sup>2</sup>



Marque / Make LEYLAND CARS Modèle / Model JAGUAR XJS N° \_\_\_\_\_

**MOTEUR / ENGINE**

- 65) Alésage 90%/3.543"  
Bore \_\_\_\_\_
- 67) Course 70%/2.756"  
Stroke \_\_\_\_\_
- 68) Cylindrée totale 5344 cm<sup>3</sup>  
326.05"² 69) Cylindrée maximum autorisée 5415 cm<sup>3</sup>  
330.49"²  
Total cylinder-capacity \_\_\_\_\_ Maximum cylinder-capacity allowed \_\_\_\_\_
- 70) Cuiasse : matériau ALUMINIUM 71) Nombre TWO  
Head : material \_\_\_\_\_ Number \_\_\_\_\_
- 72) Type de vilebrequin 3 PLANE INTEGRAL Coulé / estampé STAMPED  
Type of crankshaft \_\_\_\_\_ Moulded / stamped \_\_\_\_\_
- 73) Nombre de paliers de vilebrequin SEVEN  
Number of crankshaft main bearings \_\_\_\_\_
- 74) Diamètre maximal des manetons de vilebrequin 58.42%/2.300"  
Maximum diameter of the big end journal \_\_\_\_\_  
58.49-58.46%  
2.3028-2.3015"
- 75) Tête de bielle : type LEAD BRONZE diamètre \_\_\_\_\_  
Connecting rod big end type \_\_\_\_\_
- 76) Matériau des chapeaux des paliers de vilebrequin CAST IRON  
Material of bearing cap \_\_\_\_\_
- 77) Matériau du volant moteur STEEL  
Material of flywheel \_\_\_\_\_
- 78) Matériau du vilebrequin STEEL  
Crankshaft material \_\_\_\_\_
- 79) Matériau de la bielle STEEL  
Connecting rod material \_\_\_\_\_
- 80) Système de graissage : carter sec - carter humide OIL IN SUMP  
Lubrication system : dry-sump - oil in sump \_\_\_\_\_
- 81) Nombre de pompes à huile ONE  
Number of oil pumps \_\_\_\_\_



**Moteur 4 temps / 4 stroke engines**

- 82) Nombre d'arbres à cames TWO Emplacement OVERHEAD  
Number of camshafts \_\_\_\_\_ Location \_\_\_\_\_
- 83) Système de commande CHAIN  
Type of camshaft drive \_\_\_\_\_
- 84) Système de commande des soupapes INVERTED BUCKET TYPE TAPPET  
Type of valve operation \_\_\_\_\_
- 85) Nombre de soupapes d'admission par cylindre ONE  
Number of inlet valves per cylinder \_\_\_\_\_
- 86) Nombre de soupapes d'échappement par cylindre ONE  
Number of exhaust valves per cylinder \_\_\_\_\_
- 87) Nombre de distributeurs ONE  
Number of distributors \_\_\_\_\_
- 88) Nombre de bougies par cylindre ONE  
Number of spark plug per cylinder \_\_\_\_\_

**TRANSMISSION AUX ROUES / DRIVE TRAIN**

**Embrayage / Clutch**

- 90) Nombre de disques / Number of plates ONE
- 91) Système de commande / Method of operating clutch HYDRAULIC

**Boîte de vitesses / Gear-box**

- 92) Contrôle manuel, marque / Manual type, make LEYLAND
- 93) Nombre de rapports AV / Number of gear-box ratios forward FOUR
- 94) Boîte automatique, marque / Automatic, make BORG WARNER
- 95) Nombre de rapports AV / Number of gear-ratios forward THREE

96	Manuelle / Manual		Automatique		Supp. manuel / Automatique			
	Rapport Ratio	N. dents Nr teeth	Rapport Ratio	N. dents Nr teeth	Rapport Ratio	N. dents Nr teeth	Rapport Ratio	N. dents Nr teeth
1	3.238	34 x 14	2.400		2.678	33 x 15	2.072	30 x 17
2	1.905	30 x 12	1.467		1.739	30 x 21	1.547	29 x 22
3	1.389	25 x 24	1:1		1.266	26 x 25	1.221	26 x 25
4	1:1	Direct			1:1	Direct	1:1	Direct
5								
6								
M. AR / Rev.	3.428		2.00		3.130		3.018	

- 97) Surmultiplication type / Overdrive type \_\_\_\_\_
- 98) Nombre de dents / Number of teeth \_\_\_\_\_
- 99) Rapport Ratio \_\_\_\_\_
- 100) Vitesses en marche AV avec surmultiplication / Forward gears on which overdrive can be selected \_\_\_\_\_

**Pont/moteur / Final drive**

- 101) Type du pont moteur / Type of final drive HYPOID
- 102) Type de différentiel / Type of differential LIMITED SLIP
- 103) Nombre de dents / Number of teeth 43 x 13  
43 x 14
- 104) Rapport / Ratio 3.31:1  
3.07:1

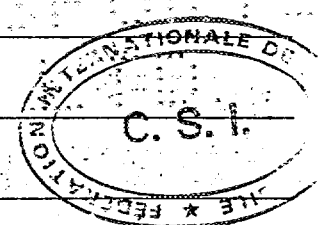


Photo C

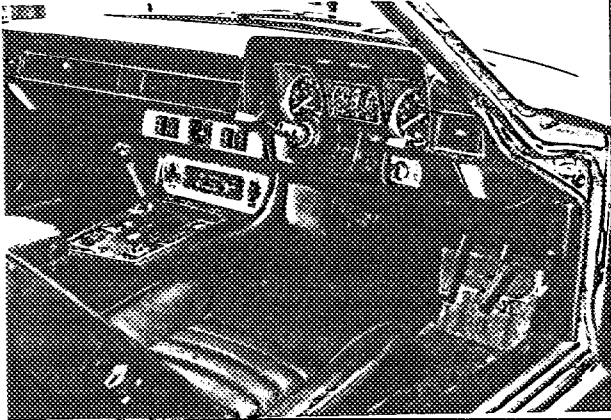


Photo D

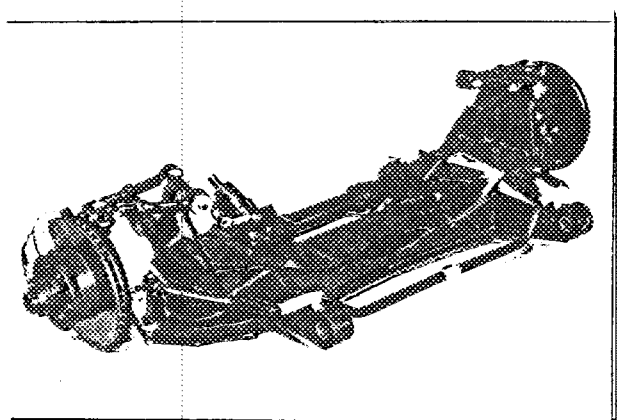


Photo E

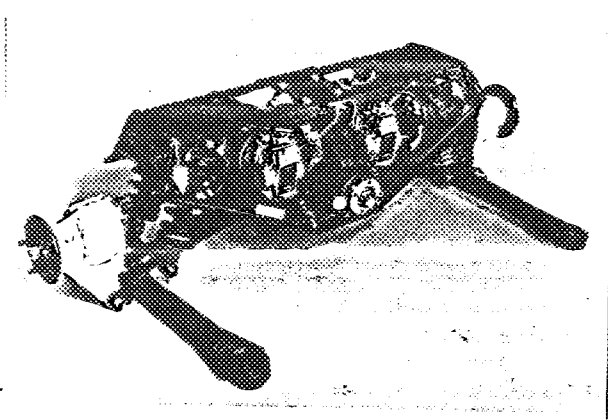


Photo F

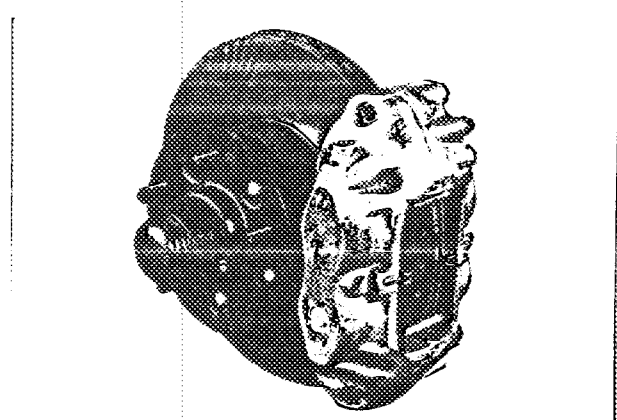


Photo G

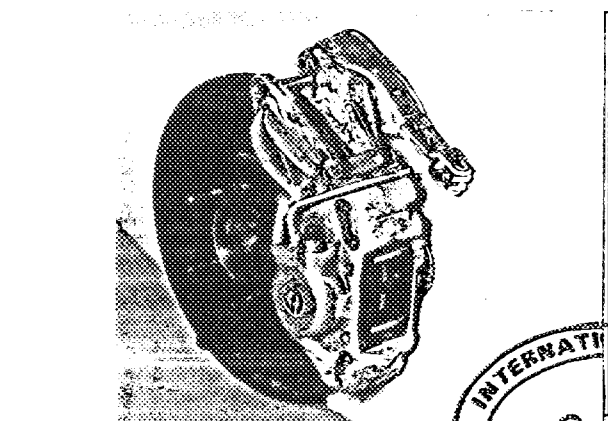


Photo H

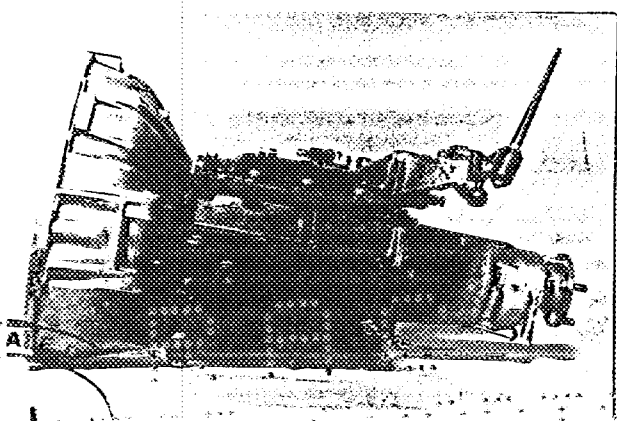


Photo I

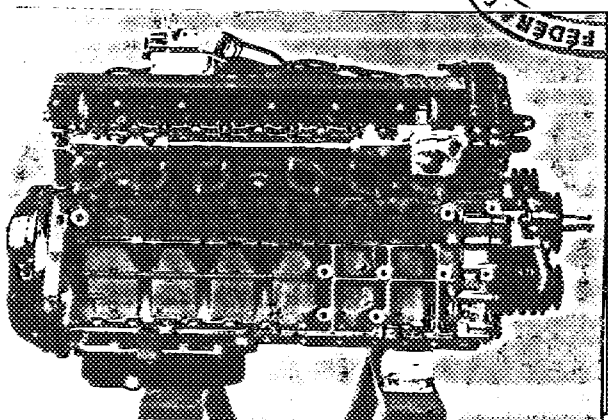
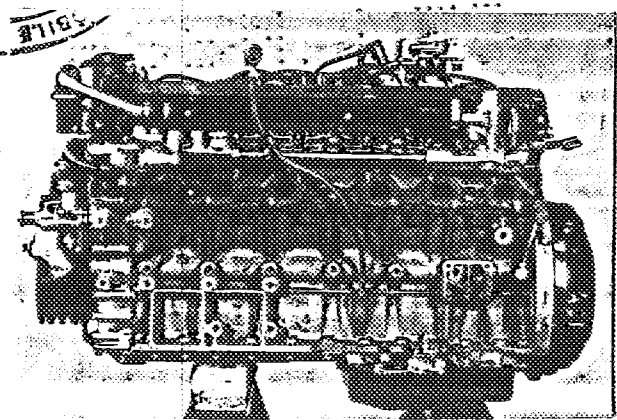
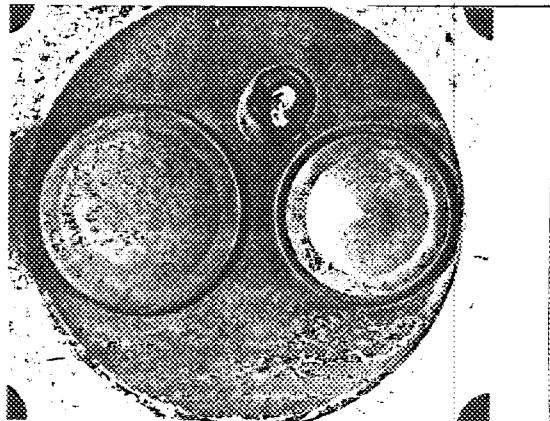


Photo J



FEDERATION INTERNATIONALE  
C.S. 101  
SIBILE

Photo K



Informations supplémentaires  
Additional informations.

ALTERNATIVE FINAL DRIVE RATIOS

STR 0295	3.54:1	46 x 13
STR 0296	3.77:1	49 x 13
STR 0297	4.09:1	45 x 11
STR 0298	4.27:1	47 x 11
STR 0299	4.55:1	50 x 11
STR 0300	4.78:1	43 x 9
STR 0301	4.89:1	44 x 9
STR 0302	5.38:1	43 x 8



WORLD SPORTS  
ASSOCIATION LTD.

COMPLÉMENT POUR LES GROUPES 1 ET 3  
DU CODE SPORTIF INTERNATIONAL

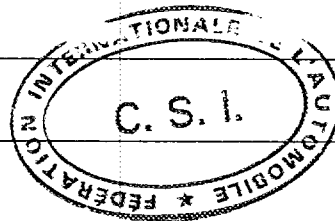
ADDITIONAL DATA FOR GROUPS 1 AND 3  
TO THE INTERNATIONAL SPORTING CODE

**CAPACITÉS ET DIMENSIONS / CAPACITIES AND DIMENSIONS**

- 110) Voie AV / Front track \_\_\_\_\_  
111) Voie AR / Rear track \_\_\_\_\_  
112) Garde au sol (pour vérification de la voie)  
Ground clearance (for verification of the track) \_\_\_\_\_  
113) Hauteur hors-tout de la voiture / Overall height of the car \_\_\_\_\_  
114) Capacité du réservoir d'essence (y compris la réserve)  
Fuel tank capacity (including reserve) \_\_\_\_\_  
115) Nombre de places \_\_\_\_\_ 116) Poids \_\_\_\_\_  
Seating capacity \_\_\_\_\_ Weight \_\_\_\_\_

**EQUIPEMENT ET GARNITURES / ACCESSORIES AND UPHOLSTERY**

- 120) Chauffage intérieur : oui - non  
Interior heating : yes - no \_\_\_\_\_  
121) Climatisation (sur option) : oui - non  
Air conditioning (in option) : yes - no \_\_\_\_\_  
122) Sièges AV : type \_\_\_\_\_  
Front seats : type \_\_\_\_\_  
123) Sièges AR : type \_\_\_\_\_  
Rear seats : type \_\_\_\_\_



**ROUES / WHEELS**

- 124) Matériau \_\_\_\_\_  
Matériau \_\_\_\_\_  
125) Poids unitaire (roue nue) \_\_\_\_\_ kg (tolérance  $\pm 5\%$ )  
Unitary weight (bare wheel) \_\_\_\_\_  
126) Diamètre de la jante \_\_\_\_\_  
Rim diameter \_\_\_\_\_  
127) Largeur de la jante \_\_\_\_\_  
Rim width \_\_\_\_\_

**SUSPENSION**

- 130) Stabilisateur AV (si prévu) \_\_\_\_\_  
Front stabilizer (if fitted) \_\_\_\_\_  
131) Stabilisateur AR (si prévu) \_\_\_\_\_  
Rear stabilizer (if fitted) \_\_\_\_\_





MOTOR SPORT DIVISION  
 The Royal Automobile Club  
 31 Belgrave Square, London SW1X 8QH

Manufacturer ..... LEYLAND CARS  
 Model ..... JAGUAR XJS  
 F.I.A. Recognition No. ....  
 Amendment No. ....

*Amendment to Form of Recognition*

FEDERATION INTERNATIONALE DE L'AUTOMOBILE

VALID IN GROUP.....TWO.....

No.	Reference No.	
	STR 0289	STRENGTHENED FRONT SUSPENSION FOR WIDE WHEELS
	STR 0290	STRENGTHENED REAR SUSPENSION FOR WIDE WHEELS
	STR 0291	LIGHTWEIGHT BRAKE CALIPERS - FRONT
	STR 0292	LIGHTWEIGHT BRAKE CALIPERS - REAR
	STR 0293	FUEL TANK (120 LITRES CAPACITY) TO FT3 SPECIFICATION
	STR 0294	OPTIONAL ALTERNATIVE FACIA AND INSTRUMENTS
	STN 0091	BRAKE WATER COOLING KIT



MOTOR SPORTS  
 RAC LTD.

Date amendment is valid from.....

Stamp of F.I.A./R.A.C.



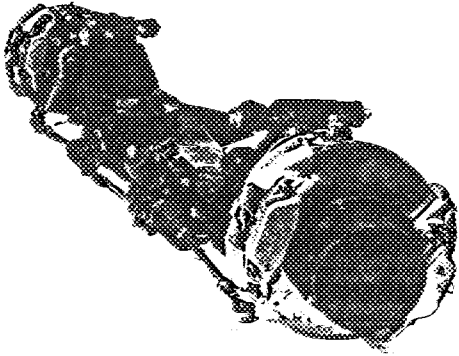
**MOTOR SPORT DIVISION**  
**The Royal Automobile Club**  
 31 Belgrave Square, London SW1X 8QH

Manufacturer ..... **LEYLAND CARS**  
 Model ..... **JAGUAR XJS**  
 F.I.A. Recognition No. ....  
 Amendment No. ....

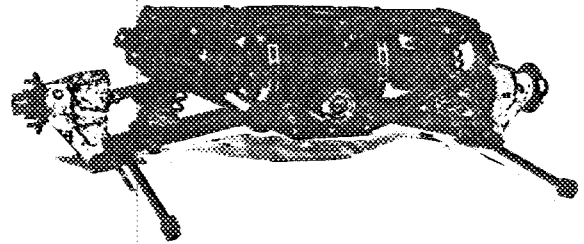
*Amendment to Form of Recognition*

**FEDERATION INTERNATIONALE DE L'AUTOMOBILE**

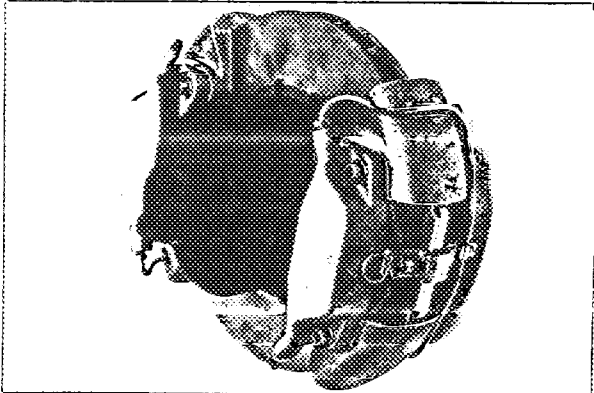
Photographs must be 3" x 2" and a matt finish



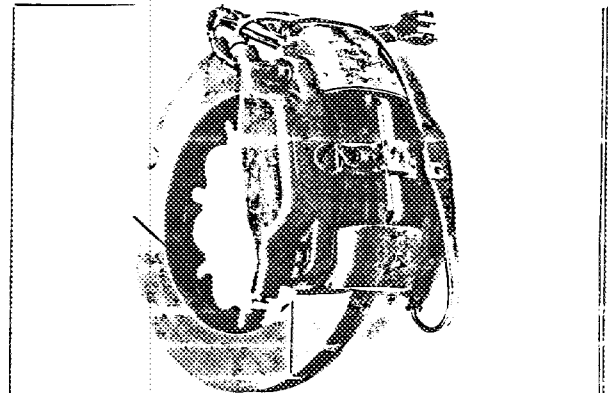
STRENGTHENED FRONT SUSPENSION



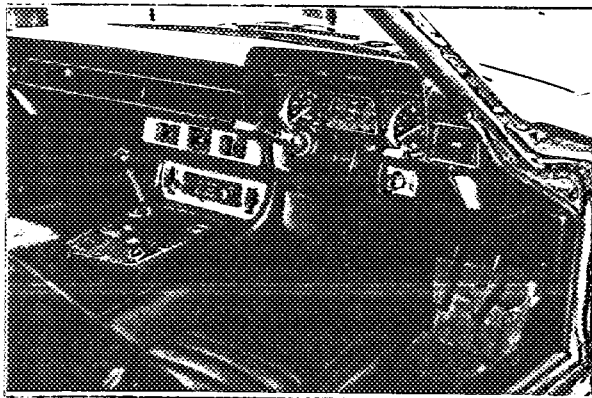
STRENGTHENED REAR SUSPENSION



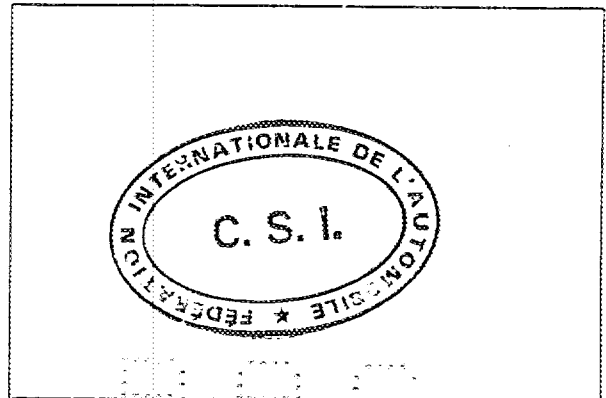
LIGHTWEIGHT BRAKE CALIPER FRONT



LIGHTWEIGHT BRAKE CALIPER REAR



ALTERNATIVE FACIA



Date amendment is valid from.....

Stamp of F.I.A./R.A.C.  
 MOTOR SPORT DIVISION  
 THE ROYAL AUTOMOBILE CLUB  
 31 BELGRAVE SQUARE  
 LONDON SW1X 8QH



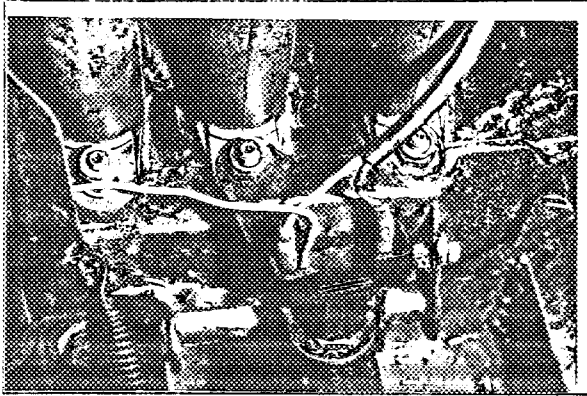
**MOTOR SPORT DIVISION**  
**The Royal Automobile Club**  
 31 Belgrave Square, London SW1X 8QH

Manufacturer LEYLAND CARS  
 Model JAGUAR XJS  
 F.I.A. Recognition No. \_\_\_\_\_  
 Amendment No. \_\_\_\_\_

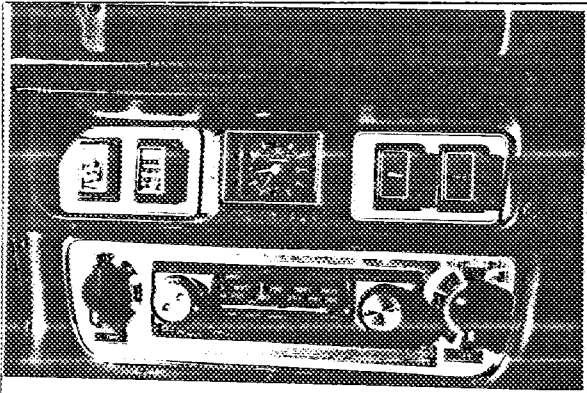
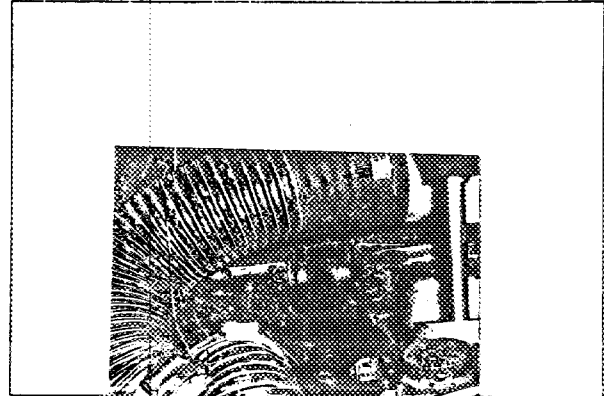
*Amendment to Form of Recognition*

**FEDERATION INTERNATIONALE DE L'AUTOMOBILE**

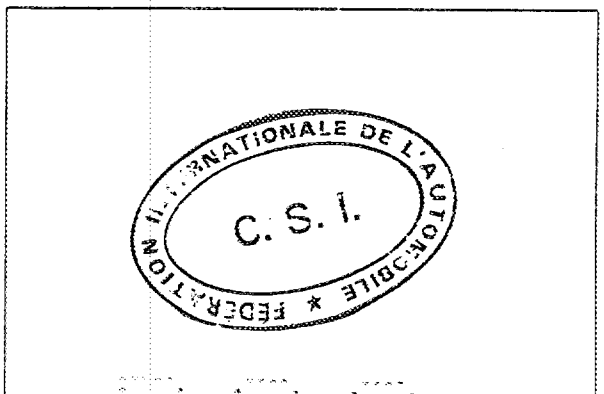
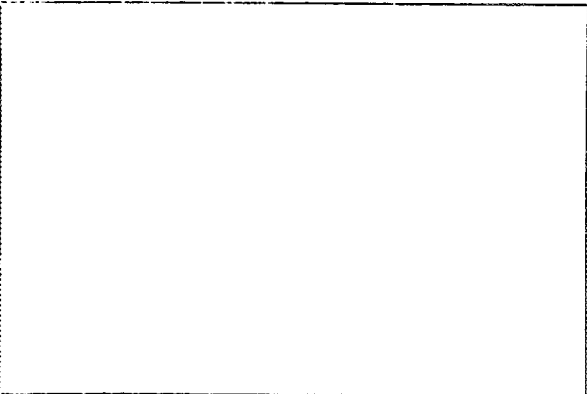
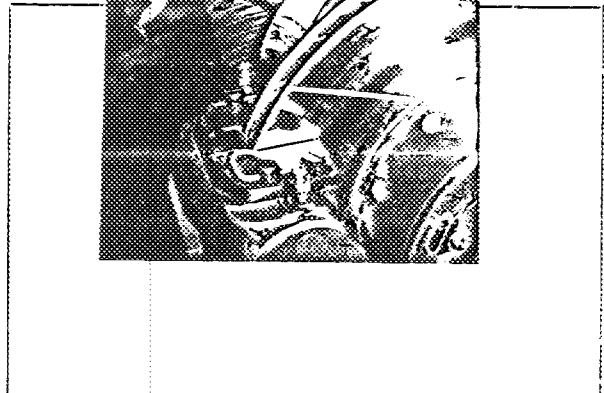
Photographs must be 3" x 2" and a matt finish



**BRAKE WATER COOLING KIT**



**BRAKE WATER COOLING KIT**



Date amendment is valid from.....

**FOR THE**  
**Stamp of F.I.A./R.A.C.**  
**MANAGED BY**



**MOTOR SPORT DIVISION**  
**The Royal Automobile Club**  
 31 Belgrave Square, London SW1X 8QH

Manufacturer LEYLAND CARS  
 Model JAGUAR XJS  
 F.I.A. Recognition No. 1688  
 Amendment No. A/V

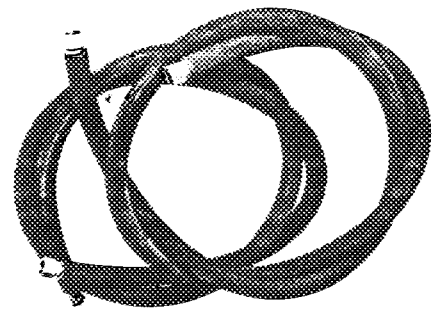
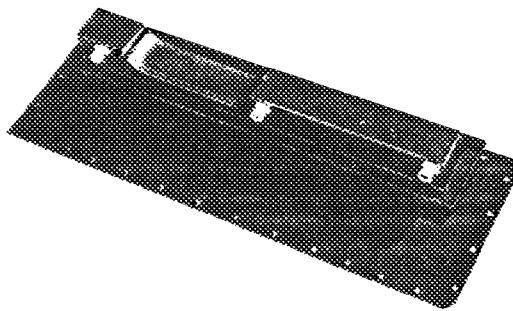
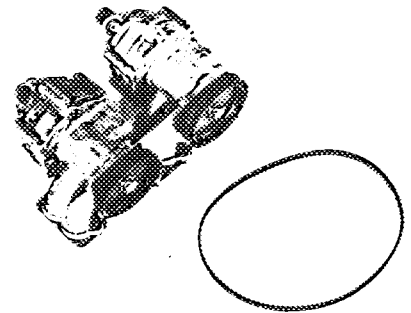
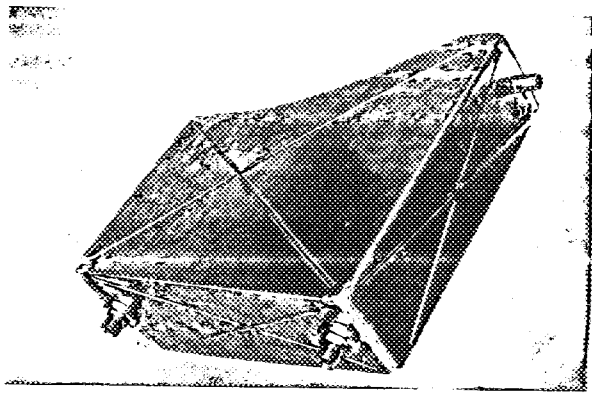
*Amendment to Form of Recognition*

**FEDERATION INTERNATIONALE DE L'AUTOMOBILE**

No. Reference No. GROUP TWO

OPTIONAL EQUIPMENT

1. ENGINE DRY SUMP LUBRICATION SYSTEM



Date amendment is valid from.....

RAC  
 MOTOR SPORT DIVISION  
 31 BELGRAVE SQUARE  
 LONDON SW1X 8QH  
 Stamp of F.I.A./R.A.C.



