



JAPAN AUTOMOBILE FEDERATION

社団法人 日本自動車連盟

JAF公認番号 T-164
グループ フーリングカー
発効年月日 71.4月末日

F. I. A. Recognition No. Group 1

1624

FEDERATION INTERNATIONALE DE L'AUTOMOBILE

Form of recognition in accordance with
Appendix J to the International Sporting Code.

国際スポーツ法典付則J項及びJAF国内競技車両規則に従った公認書式。

Manufacturer 製造会社名 **NISSAN MOTOR Co., LTD.**

Serial No of chassis 製造開始シャシー番号 **E10-000001**

Recognition is valid from engine 製造開始エンジン番号 **A10-000001**
1/10/71

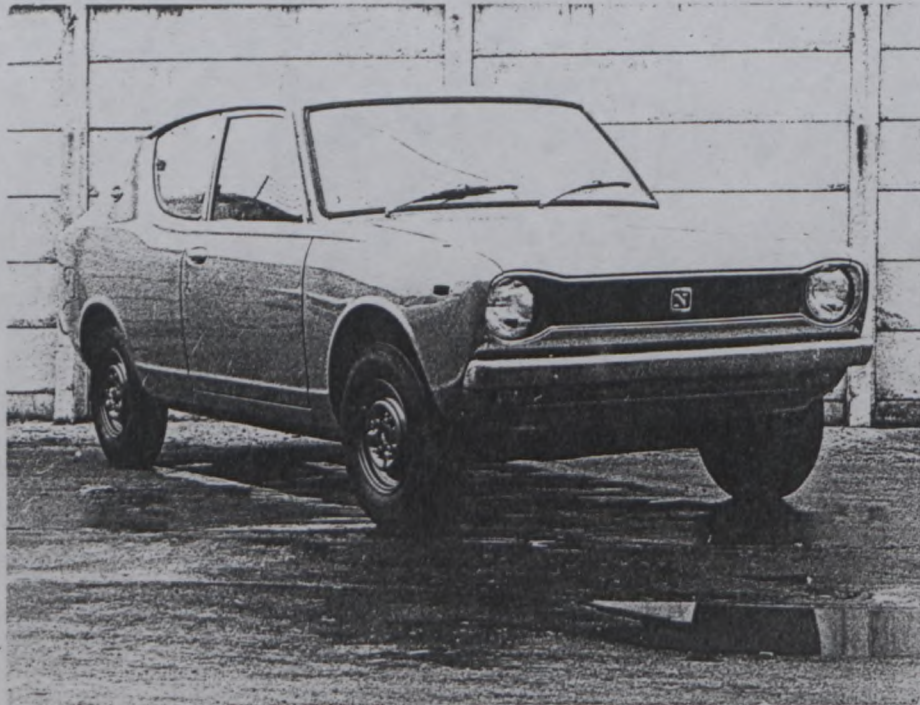
Cylinder-capacity 総排気量 { Reciprocation レシプロ 988 cm³ 6029 cu.in.
Special 特殊 cm³ cu.in.

Model 型式及び通称名 **E10 NISSAN CHERRY**
Manufacturer **NISSAN MOTOR CO., LTD.**

Manufacturer **NISSAN MOTOR CO., LTD.**
List **71/10**

The manufacturing of the model described in this recognition form was started on **June** 1970 and the minimum production of **1000** identical cars, in accordance with the specifications of this form was reached on **December** 1970

Photograph A, 3/4 view of car from front 写真A. 全体写真(斜め前方)



The vehicle described in this form has been subject to the following amendments :

Variants

on	19	rec. No.	List
on	19	rec. No.	List
on	19	rec. No.	List
on	19	rec. No.	List
on	19	rec. No.	List

Normal evolution of the type

on	19	rec. No.	List
on	19	rec. No.	List
on	19	rec. No.	List
on	19	rec. No.	List
on	19	rec. No.	List

Stamp and signature of the JAF

JAF公認印及び署名

庭山博史

Hiroshi Niwayama

Stamp and signature of the F. I. A.

Make **NISSAN**

Model **E10**
型式

J.A.F.公認番号 **T-164**
F.I.A. Rec. No. **1624**

IMPORTANT - the underlined items must be stated in two measuring systems, one of which must be the metric system. See conversion table hereafter.

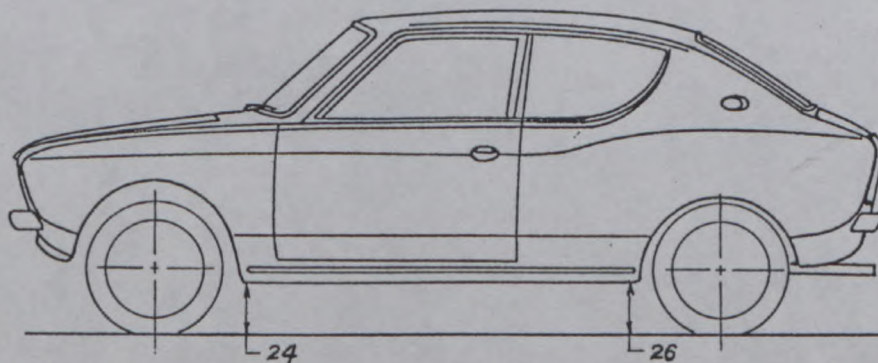
CAPACITIES AND DIMENSIONS
仕様諸元

1. <u>Wheelbase</u> ホイールベース	233.5	cm	91.9	inches
2. <u>Front track</u> トレッド(前)	127.0	cm	50.0	inches *
3. <u>Rear track</u> トレッド(後)	123.5	cm	48.6	inches *
4. Overall length of the car 全長	361	cm		inches
5. Overall width of the car 全幅	147	cm		inches
6. Overall height of the car 全高	138	cm		inches
7. <u>Capacity of fuel tank</u> (reserve included) 燃料タンク容量	9.5	Gallon US	36	ltrs Gallon Imp.
8. Seating capacity 定員	5			
9. <u>Weight</u> , total weight of the car with normal equipment, water, oil and spare wheel but without fuel nor repair tools: 車両重量 (冷却水、オイル、スペアタイヤを含む標準状態の車両重量、但し燃料、車載工具を除く)	590	kg	1301	lbs cwt

* Differences in track caused by the use of other wheels with different rim widths must be stated when recognition is requested for the wheels concerned.

Specify ground clearance in relation to the track and give drawing of two fixed points of the vehicle's structure at which measurements are taken.

These ground clearance dimensions are only for information when checking the track and can in no way affect the eligibility of the car.



Width of the car measured in the vertical plane passing through the axle of the wheels.

車軸上の車体幅	Front フロント	148 147	cm	Rear リヤ	147	cm
---------	---------------	------------	----	------------	-----	----

CONVERSION TABLE

1 inch / pouce	--	2.54 cm	1 quart US	--	0.9464 ltrs
1 foot / pied	--	30.4794 cm	1 pint (pt)	--	0.568 ltrs
1 square inch / pouce carre	--	6.452 cm ²	1 gallon Imp.	--	4.546 ltrs
1 cubic inch / pouce cube	--	16.387 cm ³	1 gallon US	--	3.785 ltrs
1 pound / livre (lb)	--	453.593 gr.	1 hundred weight (cwt)	--	50.802 kg

Make *NISSAN*

Model *E10*
型式

J.A.F公認番号 *T-164*

F.I.A. Rec. No. *1624*

CHASSIS AND COACHWORK (Photographs A, B and C)

シャーシー、ボデー

- 20. Chassis/body construction : ~~separate~~ / unitary construction
シャーシー/ボデーの構造 ~~×××××~~ / 一体構造
- 21. Unitary construction, material (s)
一体構造の場合その材質 *Steel*
- 22. Separate constructions: material(s) of chassis
セパレート構造の場合その材質
- 23. Material (s) of coachwork
ボデーの材質
- 24. Number of doors *2* Material (s) *Steel*
ドアの数 材質
- 25. Material (s) of bonnet *Steel*
ボンネットの材質
- 26. Material (s) of boot lid *Steel*
トランクリッドの材質
- 27. Material (s) of rear-window *Glass*
リヤウインドシールドの材質
- 28. Material (s) of windscreen *Glass*
フロントウインドシールドの材質
- 29. Material (s) of front-door windows *Glass*
フロントドアウインドーの材質
- 30. Material (s) of rear-door windows
リヤドアウインドーの材質
- 31. Sliding system of door windows *Vertical manual*
ドアウインドーの開閉方式
- 32. Material (s) of rear-quarter light *Glass*
リヤクォーターウインドーの材質

ACCESSORIES AND UPHOLSTERY

アクセサリ

- 38. Interior heating : ~~yes~~ - no
- 39. Air-conditioning : ~~yes~~ - no
- 40. Ventilation : yes - ~~no~~
- 41. Front seats, type of seats and upholstery *Separate vinyl*
- 42. Weight of front seat (s), complete with supports and rails, out of the car :
9 kg × 2 lbs
- 43. Rear seats, type of seats and upholstery *Bench vinyl*
- 44. Front bumper, material (s) *Steel* Weight *2.0 kg* lbs
フロントバンパーの材質 重量
- 45. Rear bumper, material (s) *Steel* Weight *2.0 kg* lbs
リヤバンパーの材質 重量

WHEELS

ホイール

- 50. Type *Pressed steel*
形式
- 51. Weight (per wheel, without tyre) *4.5 kg* lbs
重量
- 52. Method of attachment *4 nuts*
取付け方法
- 53. Rim diameter *305 mm* *12 inches*
リム径
- 54. Rim width *102 mm* *4 inches*
リム幅

STEERING

ステアリング

- 60. Type *Rack and pinion*
形式
- 61. Servo-assistance : ~~yes~~ - no
パワーステアリング ~~×~~ - 無
- 62. Number of turns of steering wheel from lock to lock *3.2*
ロックツェロック
- 63. In case of servo-assistance

Make *NISSAN*

Model *E10*
型式

J.A.F.公認番号 *T-164*
F.I.A. Rec. No. *1624*

SUSPENSION

サスペンション

70. Front suspension (photogr. D), type *Mc Pherson*
フロントサスペンションの形式
71. Type of spring *Coil*
スプリングの種類
72. Stabiliser (if fitted)
73. Number of shockabsorbers *2* 74. Type *Hydraulic telescopic*
ショックアブソーバーの数 形式
78. Rear suspension (photogr. E), type *Trailing arm*
リアサスペンションの形式
79. Type of spring *Coil*
スプリングの種類
80. Stabiliser (if fitted)
81. Number of shockabsorbers *2* 82. Type *Hydraulic telescopic*
ショックアブソーバーの数 形式

BRAKES (photographs F and G)

ブレーキ

90. System *Hydraulic*
作動方式
91. Servo-assistance (if fitted), type
サーボシステムの形式
92. Number of hydraulic master cylinders *1*
マスターシリンダーの数
- | | | FRONT
フロント | | REAR
リア | |
|--|---------------|-----------------|---------|-----------------|-------------------------|
| 93. Number of cylinders per wheel
ホイール当りのシリンダー数 | | <i>2</i> | | <i>1</i> | |
| 94. Bore of wheel cylinder (s)
ホイールシリンダーの内径 | <i>222</i> | mm | in. | <i>17.4</i> | mm in. |
| Drum Brakes
ドラムブレーキ | | | | | |
| 95. Inside diameter
ドラムの内径 | <i>203</i> | mm | in. | <i>180</i> | mm in. |
| 96. Length of brake linings
ライニングの長さ | <i>195</i> | mm | in. | <i>173</i> | mm in. |
| 97. Width of brake linings
ライニングの幅 | <i>35</i> | mm | in. | <i>30</i> | mm in. |
| 98. Number of shoes per brake
ブレーキ当りのシューの数 | <i>2</i> | | | <i>2</i> | |
| 99. Total area per brake
1ブレーキ当りの総摩擦面積 | <i>13,650</i> | mm ² | sq. in. | <i>10,380</i> | mm ² sq. in. |
| Disc brakes
ディスクブレーキ | | | | | |
| 100. Outside diameter
ディスクの外径 | | mm | in. | mm | in. |
| 101. Thickness of disc
ディスクの厚さ | | mm | in. | mm | in. |
| 102. Length of brake linings
パッドの長さ | | mm | in. | mm | in. |
| 103. Width of brake linings
パッドの幅 | | mm | in. | mm | in. |
| 104. Number of pads per brake.
ブレーキ当りのパッドの数 | | | | | |
| 105. Total area per brake
1ブレーキ当りの総摩擦面積 | | mm ² | sq. in. | mm ² | sq. in. |

Make **NISSAN**

Model **E10**
型式

J.A.F.公認番号 **F-164**
F.I.A. Rec. No. **1624**

ENGINE (photographs J and K) **
エンジン

- | | | | |
|--|-----------------------|--|-----------------|
| 130. Cycle
サイクル | 4 | 131. Number of cylinders
シリンダー数 | 4 |
| 132. Cylinder arrangement
シリンダー配列 | <i>In-line</i> | | |
| 133. Bore
ボア | 73 mm | 134. Stroke
ストローク | 59 mm |
| 135. Capacity per cylinder
1シリンダーの排気量 | 2.87 in. | 247 cm ³ | 2.32 in. |
| 136. Total cylinder-capacity
総排気量 | | 988 cm ³ | 15.07 cu. in. |
| 137. Material (s) of cylinder block
シリンダーブロックの材質 | | <i>Cast iron</i> | |
| 138. Material (s) of sleeves (if fitted)
スリーブの材質 | | | |
| 139. Cylinder-head, material (s)
シリンダーヘッドの材質 | | <i>Aluminum alloy</i> | Number fitted 1 |
| 140. Number of inlet ports
吸気孔の数 | 4 | 141. Number of exhaust ports
排気孔の数 | 4 |
| 142. Compression ratio | 9.0 | | |
| 143. Volume of one combustion chamber | | 25.4 cm ³ | 1 cu. in. |
| 144. Piston, material
ピストンの材質 | <i>Aluminum alloy</i> | 145. Number of rings
リングの数 | 3 |
| 146. Distance from gudgeon pin centre line to highest point of piston crown | 33 mm | | inches |
| 147. Crankshaft : rounded / stamped
クランクシャフト 鍛造 / 鍛造 | | 148. Type of crankshaft : <i>integral</i> / XXXX
クランクシャフトの形式 : 一体式 / | |
| 149. Number of crankshaft main bearings
メインベアリングの数 | 3 | | |
| 150. Material of bearing cap
ベアリングキャップの材質 | <i>Cast iron</i> | | |
| 151. System of lubrication : dry sump / oil in sump
潤滑方式 : XXXXXX / ウェットサンプ | | | |
| 152. Capacity, lubricant
潤滑油量 | 3.3 ltrs | | pts quarts US |
| 153. Oil cooler : yes / no
オイルクーラー : XXXX / 無 | | 154. Method of engine cooling <i>Water</i>
エンジン冷却方式 | quarts US |
| 155. Capacity of cooling system | 4.1 ltrs | | pints |
| 156. Cooling fan (if fitted), dia. | 290 mm | | inches |
| 157. Number of blades of cooling fan | 6 | | |

Bearings **
ベアリング

- | | | | | |
|--|--------------|------------|-------|-----|
| 158. Crankshaft main, type
メインベアリングの形式 | <i>Plain</i> | Dia.
内径 | 50 mm | in. |
| 159. Connecting rod big end,
コンロッド大端部ベアリングの形式 | <i>Plain</i> | Dia.
内径 | 45 mm | in. |

Weights **

- | | | |
|---|---------|-----|
| 160. Flywheel (clean) | 4.5 kg | lbs |
| 161. Flywheel with clutch (all turning parts) | 10.7 kg | lbs |
| 162. Crankshaft | 9.8 kg | lbs |
| 163. Connecting rod | 0.41 kg | lbs |
| 164. Piston with rings and pin | 0.34 kg | lbs |

** for additional information concerning Wankel rotary engines see page 15, 16
ロータリーエンジンは15、16頁参照

Make NISSAN

Model E10
型式

J.A.F.公認番号 T-164

F.I.A. Rec. No.

1624

FOUR STROKE ENGINES *, **

4サイクルエンジン

- 170. Number of camshafts 1
カムシャフトの数
- 172. Type of camshaft drive Chain
カムシャフトの駆動方式
- 173. Type of valve operation Push rod
バルブの作動方式

171. Location Cylinder block
カムシャフトの位置

INLET (see page 8) *, **
吸気系

- 180. Material(s) of inlet manifold Aluminum alloy
マニホールドの材質
- 181. Diameter of valves 35 mm
バルブの径
- 182. Max. valve lift 8 mm 0.31 in.
バルブリフト
- 184. Type of spring Coil
バルブスプリングの種類
- 186. Tappet clearance for checking timing (cold)
- 187. Valves open at (with tolerance for tappet clearance indicated)
- 188. Valves close at (with tolerance for tappet clearance indicated)
- 189. Air filter, type Dry

- 183. Number of valve springs 1
バルブスプリングの数
- 185. Number of valves per cylinder 1
シリンダー当りのバルブの数
- 0.35 mm
- B, T, D, C 12° ± 7°
- A, T, D, C 48° ± 7°
- B

EXHAUST (see page 8) *, **
排気系

- 195. Material(s) of exhaust manifold Cast iron
マニホールドの材質
- 196. Diameter of valves 29 mm
バルブの径
- 197. Max. valve lift 8 mm 0.31 in.
バルブリフト
- 199. Type of spring Coil
バルブ・スプリングの種類
- 201. Tappet clearance for checking timing (cold)
- 202. Valves open at (with tolerance for tappet clearance indicated)
- 203. Valves close at (with tolerance for tappet clearance indicated)

- 1.14 inches
- 198. Number of valve springs 1
バルブスプリングの数
- 200. Number of valves per cylinder 1
シリンダー当りのバルブの数
- 0.35 mm
- B, B, D, C 50° ± 7°
- A, T, D, C 10° ± 7°

CARBURETION (photograph N)
気化器

- 210. Number of carburetors fitted 1
キャブレターの数
- 212. Make HITACHI
製造会社
- 214. Number of mixture passages per carburetor 2
キャブレター当りのバルブ数
- 215. Flange hole diameter of exit port(s) of carburetor 26 & 28 mm
キャブレター出口内径
- 216. Minimum dimensions of mixture passage(s) 20 & 24 mm
ベンチュリーの最小寸法

- 211. Type Down - draft
形式
- 213. Model DCG - 286 - 4
型式

INJECTION (if fitted)
燃料噴射

- 220. Make of pump
ポンプの製造会社
- 222. Model or type of pump
ポンプの型式
- 224. Location of injectors
ノズルの位置
- 225. Minimum diameter of inlet pipe
吸気管の最小径

- 221. Number of plungers
プランジャーの数
- 223. Total number of injectors
ノズルの総数
- mm
- inches

*) for additional information concerning two-stroke engines and super-charged engines see page 14.
2サイクルエンジン、過給機付エンジンは14頁参照

***) for additional information concerning Wankel rotary engines see page 15, 16.
ロータリーエンジンは15, 16頁、参照

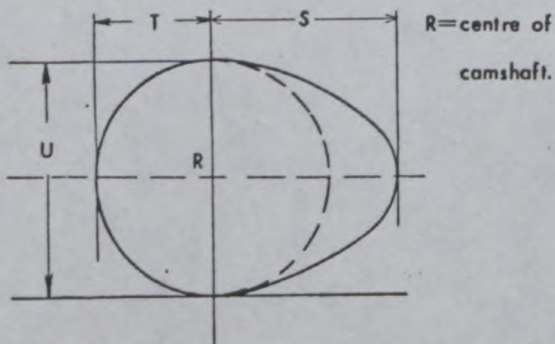
ENGINE ACCESSORIES
エンジン補機

- | | | | |
|--|--------------------|---|-----------------|
| 230. Fuel pump : mechanical and electric
燃料ポンプ 機械式/電気式 | | 231. No. fitted
ポンプの数 | 1 |
| 232. Type of ignition system <i>Make and break</i>
点火方式 | | 233. No. of distributors
ディストリビューターの数 | 1 |
| 234. No. of ignition coils
コイルの数 | 1 | 235. No. of spark plugs per cylinder/ per
シリンダー当りのプラグ数(XXXXXX) | 1 |
| 236. Generator, type: dyno /alternator-number fitted
発電機 交流/交流 数 | | 237. Method of drive
駆動方式 | <i>V - Belt</i> |
| 238. Voltage of generator | 12 volts | 239. Battery, number
バッテリーの数 | 1 |
| 240. Location
バッテリー位置 | <i>Engine room</i> | | |
| 241. Voltage of battery
バッテリー電圧 | 12 volts | | |

ENGINE AND CAR PERFORMANCES (as declared by manufacturer in catalogue)

- | | | | |
|-------------------------------|-------------|-----------------------------------|--------------|
| 250. Max. engine output | 58 Ps | (type of horsepower: <i>JIS</i>) | at 6000 rpm |
| 251. Maximum rpm | 6200 rpm | output at that figure | 578 Ps |
| 252. Maximum torque | 8.0 Kg - m | at 4000 rpm | |
| 253. Maximum speed of the car | 140 km/hour | | miles / hour |

255. Cam profile
カムプロフィール



Inlet cam
吸気カム

S =	20.9	mm	0.82	inches
T =	15.6	mm	0.61	inches
U =	31.2	mm	1.23	inches

Exhaust cam
排気カム

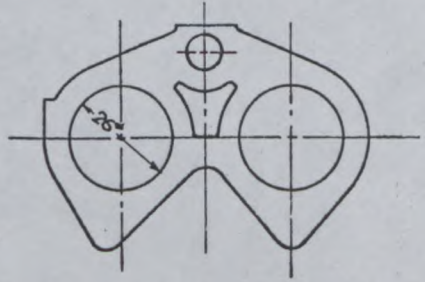
S =	20.9	mm	0.82	inches
T =	15.6	mm	0.61	inches
U =	31.2	mm	1.23	inches

Make NISSAN

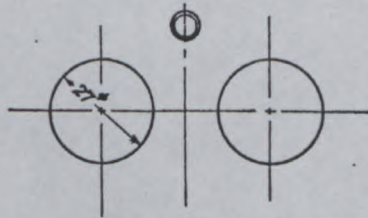
Model E10
型式

J·A·F公認番号 T-164
F.I.A. Rec. No. 1624

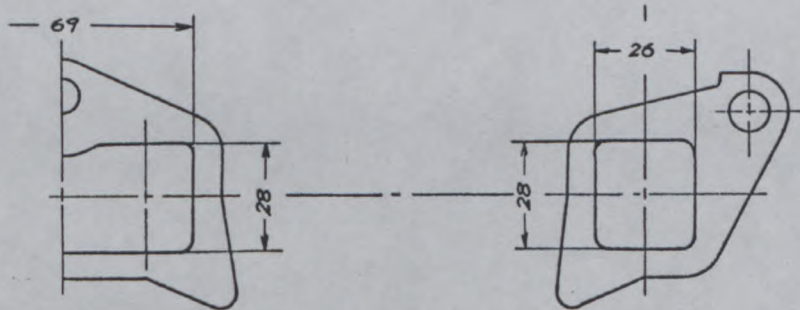
Drawing inlet manifold ports, side of cylinder-head/~~housing~~ scale or dimensions and manufacturing tolerance.



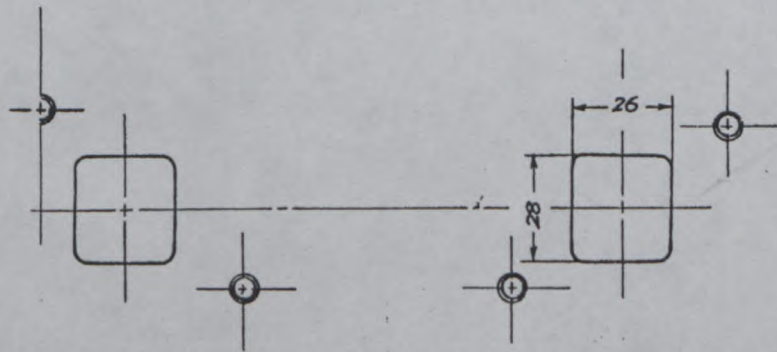
Drawing of entrance to inlet port of cylinder-head/~~housing~~ scale or dimensions and manufacturing tolerance.



Drawing exhaust manifold ports, side of cylinder-head/~~housing~~ scale or dimensions and manufacturing tolerance.



Drawing of exit to exhaust port of cylinderhead/~~housing~~. Indicate scale or dimensions and manufacturing tolerance.



Unit: mm
Tolerance: ± 1.5

Make **NISSAN**

Model **E10**
型式

J·A·F公認番号 **T-164**
F.I.A. Rec. No. **1624**

DRIVE TRAIN
駆動系

CLUTCH
クラッチ

260. Type of clutch **Dry Plate**
形式

261. No. of plates **1**
プレッシャープレートの数

262. Dia. of clutch plates **166** mm inches
プレッシャープレートの外径

263. Dia. of linings, inside **110** mm in. outside **160** mm in.
フェーシングの内径 外径

264. Method of operating clutch **Mechanical**
作動方式

GEAR BOX (photograph H)
トランスミッション

270. Manual type, make **NISSAN**
手動式の製造会社名

Method of operation **Mechanical**
作動方式

271. No. of gear-box ratios forward **4**
前進段数

272. Synchronized forward ratios **1 2 3 & 4**

273. Location of gear-shift **Floor**
シフトレバーの位置

274. Automatic, make
自動式の製造会社名

276. Location of gear-shift
シフトレバーの位置

275. No. of forward ratios
前進段数

277.	Manual 手動		Automatic 自動		Alternative manual / automatic 手動 / 自動			
	Ratio ギヤー比	No. teeth 歯数	Ratio ギヤー比	No. teeth 歯数	Ratio ギヤー比	No. teeth 歯数	Ratio ギヤー比	No. teeth 歯数
1	3.67	$\frac{34}{18} \times \frac{35}{18}$			3.01	$\frac{31}{20} \times \frac{35}{18}$		
2	2.22	$\frac{34}{18} \times \frac{27}{23}$			1.97	$\frac{31}{20} \times \frac{28}{22}$		
3	1.45	$\frac{34}{18} \times \frac{23}{30}$			1.38	$\frac{31}{20} \times \frac{25}{28}$		
4	1.00				1.00			
5								
6								
reverse リバース	4.09	$\frac{34}{18} \times \frac{16}{18} \times \frac{32}{16}$			3.36	$\frac{31}{20} \times \frac{16}{18} \times \frac{32}{16}$		

278. Overdrive, type
オーバードライブ形式

279. Forward gears on which overdrive can be selected
オーバードライブの作動段数

280. Overdrive ratio
オーバードライブ比

FINAL DRIVE
ファイナル

290. Type of final drive **Helical gear**
形式

291. Type of differential **Bevel gear**
差動機形式

292. Type of limited slip differential (if fitted)
リミテッドスリップデフの形式

293. Final drive ratio **4.29** **4.43**
ギヤー比

Number of teeth **60/14** **62/14**
歯数

Make *NISSAN*

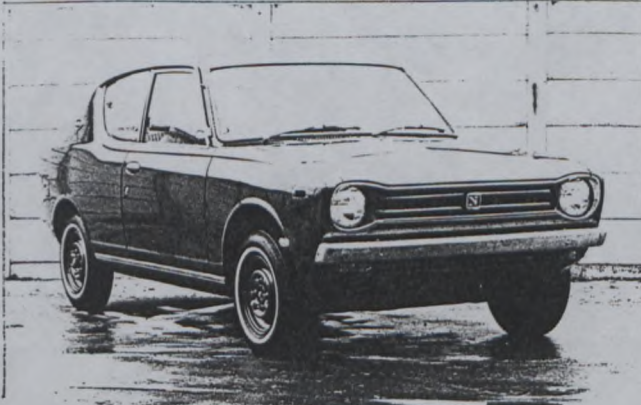
Model *E10*
型式

J·A·F公認番号 *T-164*
F.I.A. Rec. No. *1624*

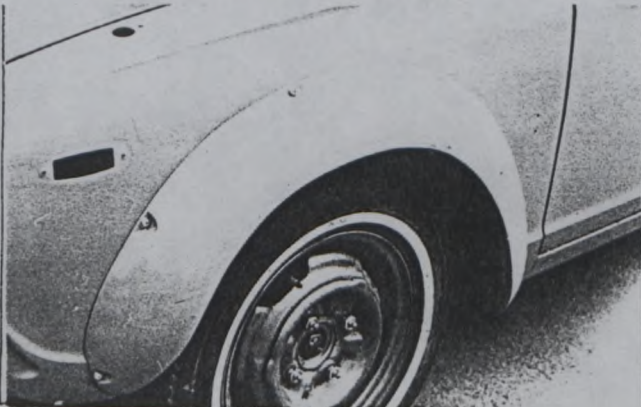
Optional equipment affecting preceding information. This to be stated together with reference number.
オプション:

The following items have been added

Photograph A 3/4 View, front

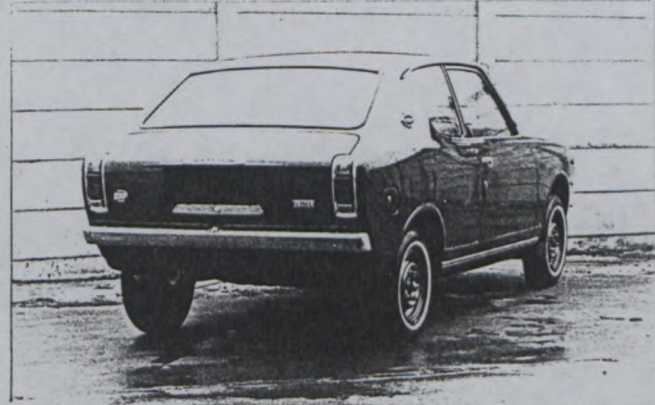


*Optional equipment
Photograph over fender front*

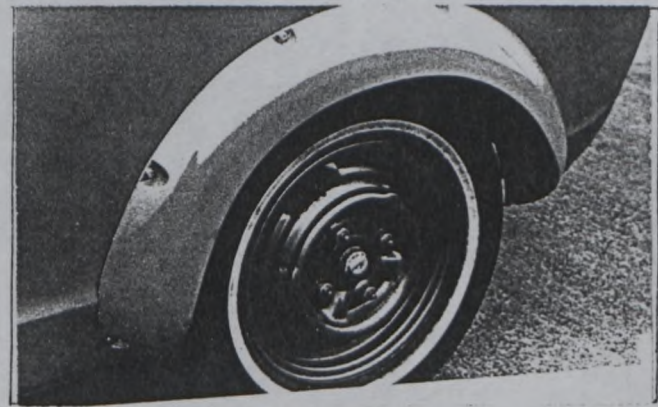


Parts No. R/H 63860-M0820
L/H 63861-M0820

Photograph B 3/4 View rear



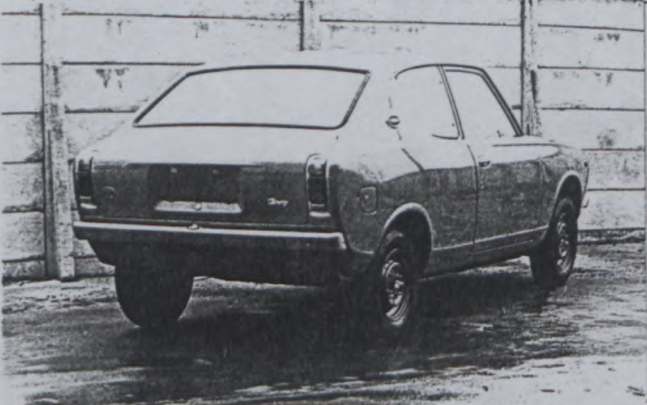
Photograph over fender rear



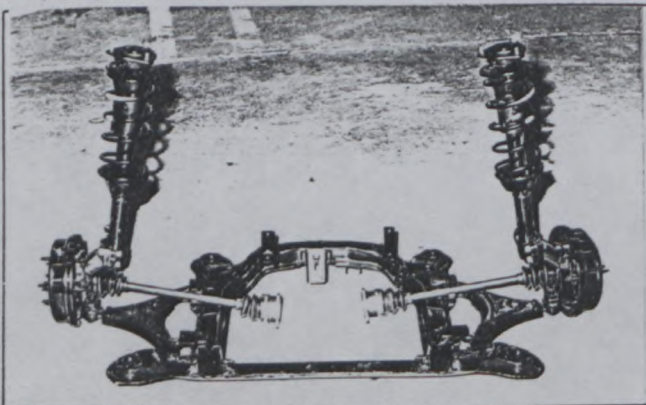
R/H 63862-M0820
L/H 63863-M0820

Photograph
写真

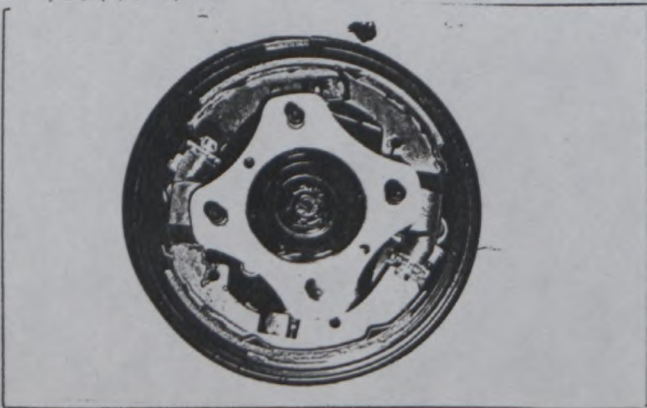
B, 3/4 view of car from rear 全体写真 (斜め後方)



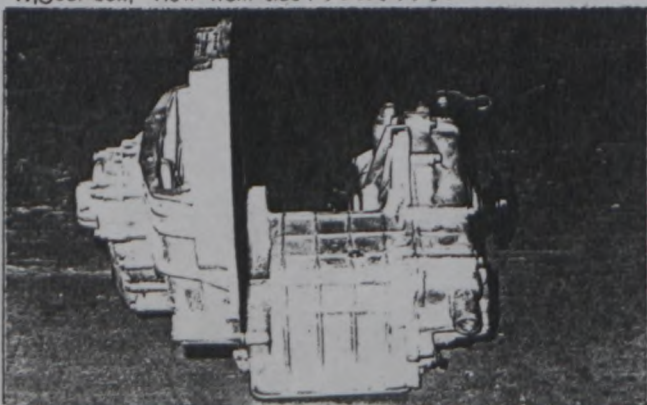
D, Front axle complete, removed from car. Without wheels.
フロントサスペンション



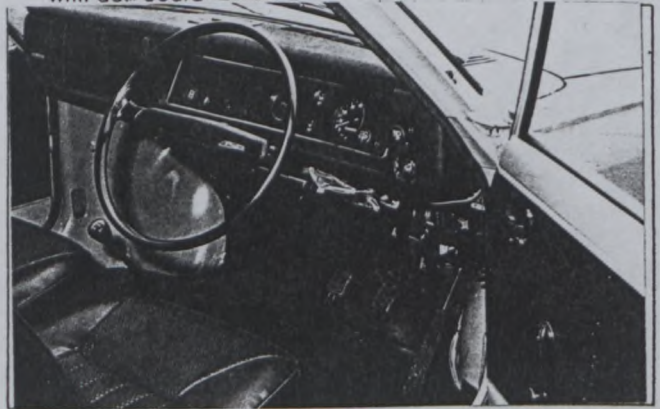
F, Front brake, drum removed or disc with caliper(s)
フロントブレーキ



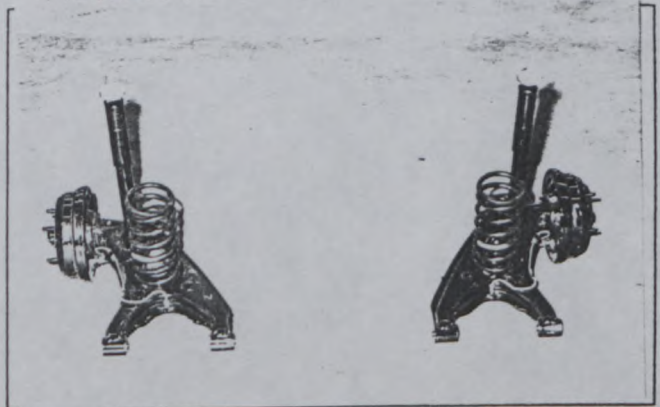
H, Gear-box, view from side トランスミッション



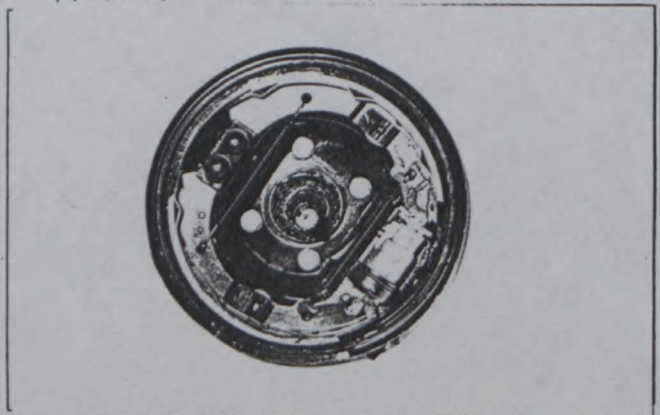
C, Interior view of car through driver's door (open or removed) with dashboard 運転席附近



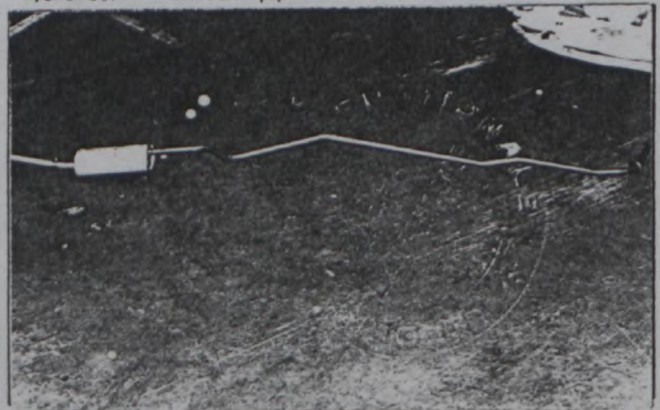
E, Rear axle complete without wheels, removed from car.
リヤサスペンション



G, Rear brake, drum removed or disc with caliper(s)
リヤブレーキ

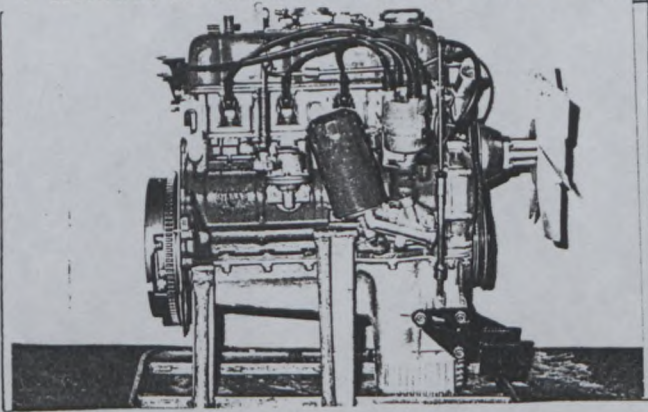


I, Silencer + exhaust pipes after exhaust manifold. 排気系

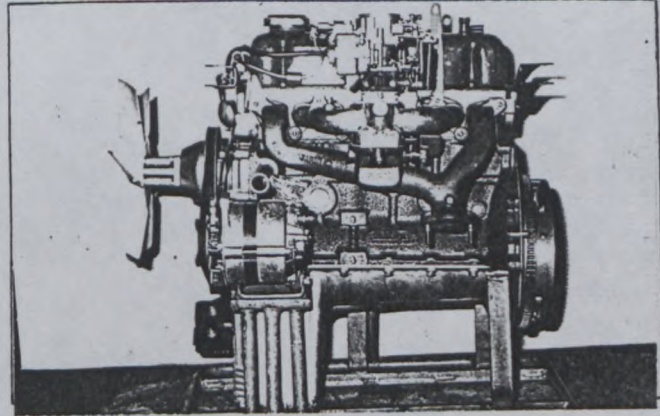


Photograph

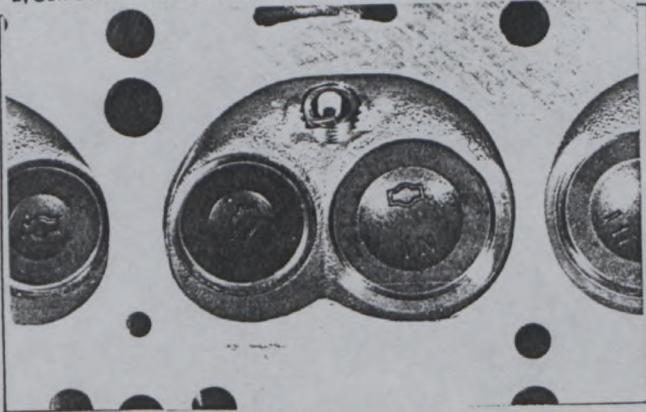
J, Engine unit out of car, from right. With clutch and accessories but without air filter nor gear-box. エンジン右側面



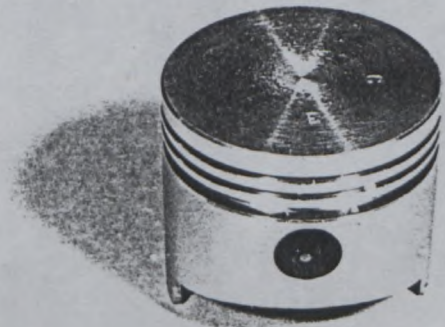
K, Engine unit out of car, from left. With clutch and accessories but without gear-box nor air filter. エンジン左側面



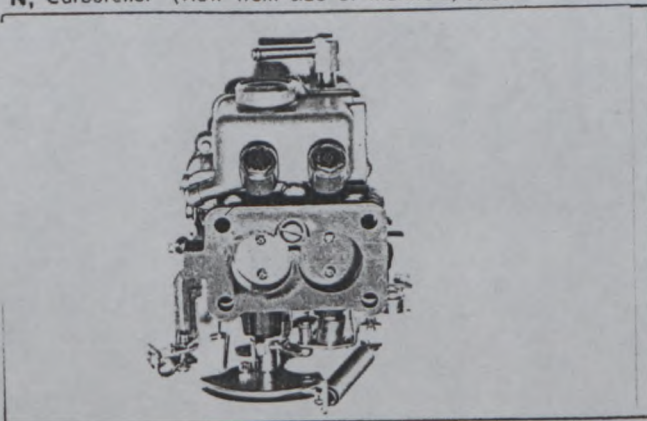
L, Combustion chamber 燃焼室/Rotor housing ~~ローターハウジング~~



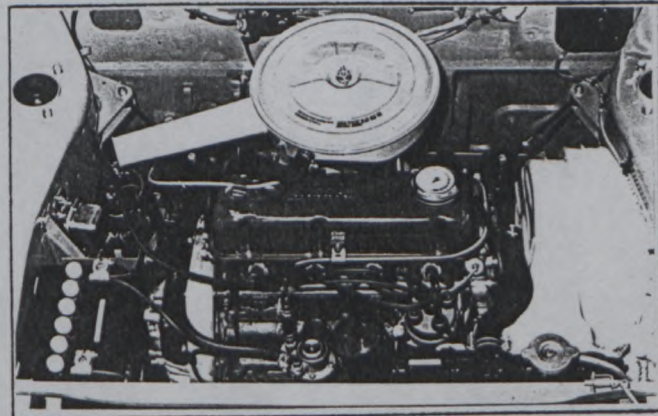
M, Piston crown ~~ピストンクラウン/Rotor crank~~ ~~ローター~~



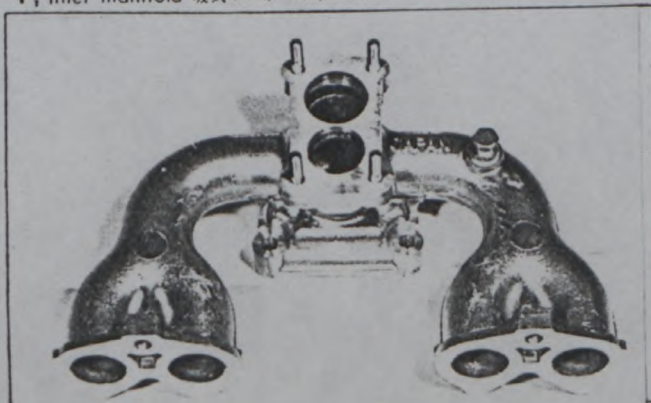
N, Carburettor (view from side of manifold) 気化器



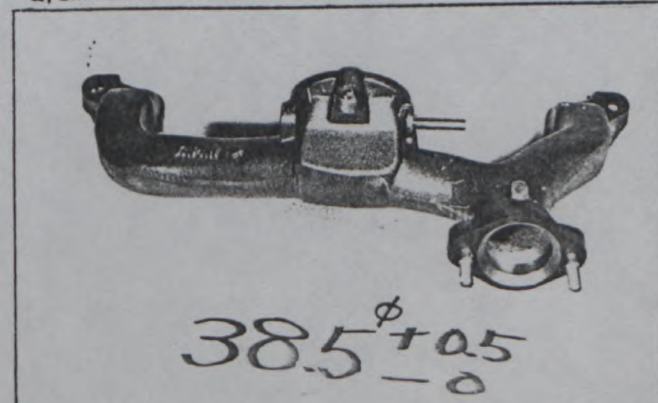
O, Engine in car with all accessories, bonnet open or removed. エンジンルーム



P, Inlet manifold 吸気マニホールド

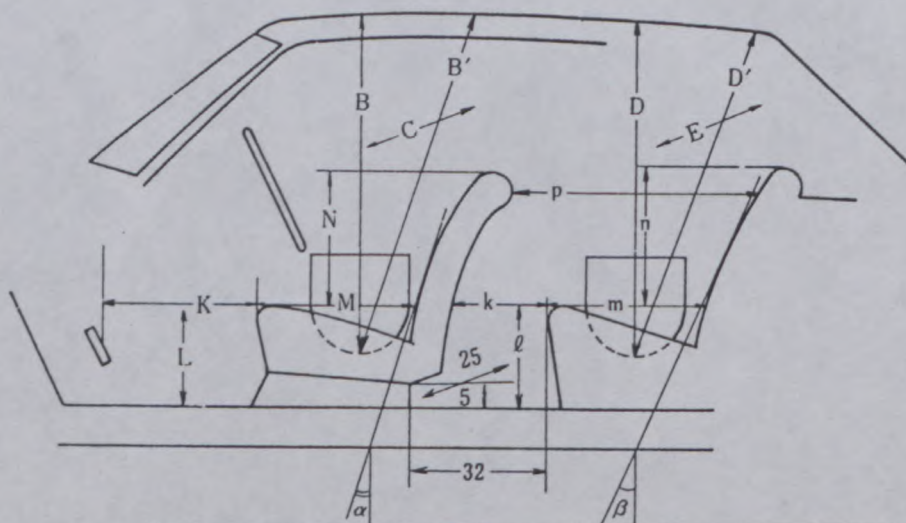


Q, Exhaust manifold 排気マニホールド



DIMENSIONS OF INTERIOR
室内寸法
(Conform to Art. 253 b of Appendix J)

For four seaters:
4座席

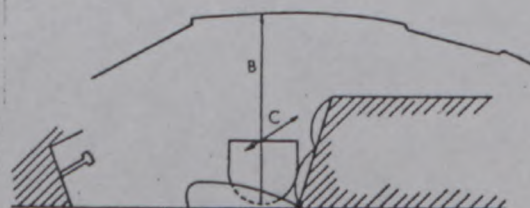


Minimum Dimensions (cm)							
B	B'	α	C	D	D'	β	E
92	100	225°	126	925	945	225°	125

Minimum Dimensions (cm)										
L	l	M	m	N	n	k+m	p	k	k+l+m	K+L+M
31.0	30.5	44.5	44.0	43.5	36	64.5	72.5	20.5	95.0	120.5
0.9L = 28		0.85M = 38.0		0.8N = 35.0		0.8(k+m) = 52.0		(15)	(95)	(120)

For two seaters:
2座席

Minimum Dimensions	
B	C
cm	cm



Make *NISSAN*

Model *E10*
型式

J.A.F.公認番号 *T-164*
F.I.A. Rec. No. *1624*

TWO STROKE ENGINES
2サイクルエンジン

300. System of cylinder scavenging 掃気方式					
301. Type of lubrication 潤滑方式					
302. Inlet ports, length measured around cylinder wall 吸気孔の幅			mm		inches
303. Height inlet port 吸気孔の高さ	mm	in.	304. Area 吸気孔の総面積	mm ²	sq. in.
305. Exhaust ports, length measured around cylinder wall 排気孔の幅			mm		inches
306. Height exhaust port 排気孔の高さ	mm	in.	307. Area 排気孔の総面積	mm ²	sq. in.
308. Transfer port, length measured around cylinder wall 掃気孔の幅			mm		inches
309. Height transfer port 掃気孔の高さ	mm	in.	310. Area 掃気孔の総面積	mm ²	sq. in.
311. Piston ports, length measured around piston ピストンポートの幅			mm		inches
312. Height piston port ピストンポートの高さ	mm	in.	313. Area ピストンポートの総面積	mm ²	sq. in.
314. Method of precompression プレコンプレッション方式			315. Precompression cyl.:	yes / no	
316. Bore	mm	inches	317. Stroke	mm	inches
318. Distance from top of cyl. block to highest point of exhaust port : 排気孔の最高点とブロック上面との距離				mm	inches
319. Distance from top of cyl. block to lowest point of inlet port : 吸気孔の最下点とブロック上面との距離				mm	inches
320. Distance from top of cyl. block to highest point of transfer port : 掃気孔の最高点とブロック上面との距離				mm	inches
321. Drawing of cylinder ports. シリンダーポート展開図					

330. Supercharging—state full details hereafter :
過給器

Unit: mm
Tolerance:

Make **NISSAN**

Model **E10**
型式

J.A.F.公認番号

T-164

F.I.A. Rec. No.

1624

Wankel Rotary Engine (photographs J and K)

ロータリーエンジン

400. Type & cycle 形式及びサイクル		
401. No of rotors ローターの数		
402. Rotor arrangement ローターの配列		
403. Trochoid, length of major Axis トロコイド長軸長さ	mm	in.
404. Trochoid, length of minor Axis トロコイド短軸長さ	mm	in.
405. Trochoid, width トロコイドの幅	mm	in.
406. Trochoid, generating radius (Containing equidistance) トロコイドの生成半径 (平行移動量を含む)	mm	in.
407. Eccentricity 偏心率	mm	in.
408. Capacity per Rotor 1ローター当りの排気量	cm ³	cu. in.
409. Total capacity 総排気量	cm ³	cu. in.
410. Equivalent total capacity (by App. J Art. 252) 換算総排気量 (J項 252条による)	cm ³	cu. in.
411. Material(s) of side housing サイドハウジングの材質		
412. Material(s) of rotor housing ローターハウジングの材質		
413. Number of inlet ports 吸気孔の数		
414. Number of exhaust ports 排気孔の数		
415. Compression ratio		
416. Volume of one combustion chamber	cm ³	cu. in.
417. Rotor material ローターの材質		
418. Number of apex seal per rotor ローター当りのアペックスシールの数		
419. Number of corner seal per rotor ローター当りのコーナーシールの数		
420. Number of side seal per rotor ローター当りのサイドシールの数		

Make NISSAN

Model E10
 型式

- 421. Number of oil scraping ring per rotor
1ローター当りのオイルリングの数
- 422. Eccentric shaft: moulded/stamped
偏心軸: 鋳造/鍛造
- 423. Type of eccentric shaft: integral/
偏心軸の形式: 一体式/
- 424. Number of eccentric shaft main bearings
メインベアリングの数

Bearing
ベアリング

440. Eccentric shaft, main <small>メインベアリング</small>	Type 形式	Dia. 内径	mm	in.
441. Rotor bearing <small>ローターベアリング</small>	Type 形式	Dia. 外径	mm	in.

Weights

- 450. Flywheel (clean) kg
- 451. Flywheel with clutch (all turning parts) kg
- 452. Eccentric shaft kg
- 453. Rotor with seals, gear and bearing kg

Inlet (See page 8)
吸気系

- 460. Material(s) of inlet manifold
マニホールドの材質
- 461. Location of inlet ports
吸気孔の位置
- 462. Inlet port area per rotor. mm² sq. in.
- 463. Inlet port open at (with tolerance)
吸気孔開き始め (公差を含む)
- 464. Inlet port close at (with tolerance)
吸気孔閉じ終り (公差を含む)
- 465. Air filter type

Exhaust (See page 8)
排気系

- 470. Material(s) of exhaust manifold
マニホールドの材質
- 471. Location of exhaust Ports
排気孔の位置
- 472. Exhaust port area per rotor mm² sq. in.
- 473. Exhaust port open at (with tolerance)
排気孔開き始め (公差を含む)
- 474. Exhaust port close at (with tolerance)
排気孔閉じ終り (公差を含む)



JAPAN AUTOMOBILE FEDERATION

社団 日本自動車連盟
法人

J.A.F 公認番号 T-164E-1

発効年月日 47. 4. 30.

F.I.A. Homol. No. ~~164E-1~~
5473

1/1E

FEDERATION INTERNATIONALE DE L'AUTOMOBILE

Form of recognition accordance with
Appendix J to the International Sporting Code.

国際スポーツ法典付則J項及びJAF国内競技車両規則に従った公認書式。

Make	NISSAN MOTOR CO., LTD.	Model	E10 (NISSAN CHERRY)
製造会社名		型式及び通称名	
Modification's application starts with serial No.		chassis	E10-000001
		適用シャーシー番号	
		engine	A10-000001
		適用エンジン番号	

Application of this amendment started the JAN. 1970
適用年月日

Commercial denomination after application of modifications

The modifications are to be considered as: ~~Variation~~ / normal evolution of the type
~~変異~~ / 正常進化

Date amendment is valid from

List

Description of amendment 内容

Changing group of FIA homologation.

Group 2 → Group 1

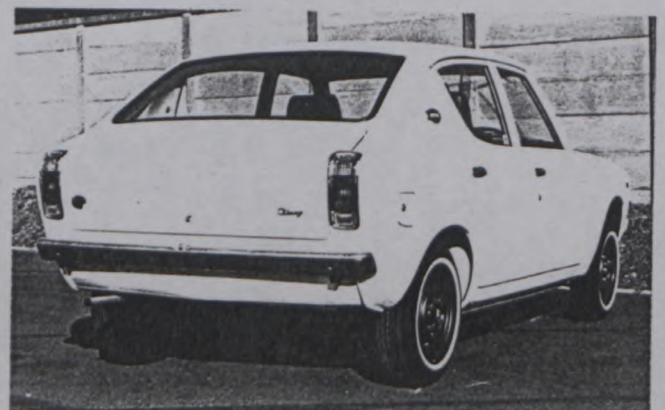
The following items have been added.

4 door model

Photograph A. 3/4 view, front



Photograph B. 3/4 view, rear



9. Weight (4 door model)

605 kg, 1,336 lb

Stamp and signature of the JAF

JAF公認印及び署名

三井平八郎



Stamp and signature of the F.I.A.



JAPAN AUTOMOBILE FEDERATION

社団法人 日本自動車連盟

J·A·F公認番号 T-164 v-3
発効年月日 47.10.31
F. I. A. Homol. No 5473

2/2V

FEDERATION INTERNATIONALE DE L'AUTOMOBILE

Form of recognition accordance with Appendix J to the International Sporting Code.

国際スポーツ法典付則J項及びJAF国内競技車両規則に従った公認書式。

Make NISSAN MOTOR CO., LTD. **Model** E10 (NISSAN CHERRY)
 製造会社名 型式及び通称名
Modification's application starts with serial No. chassis 適用シャーシー番号 KE10-000001
 engine 適用エンジン番号 A10-000001
 Application of this amendment started the DEC. 1971
 適用年月日
 Commercial denomination after application of modifications KE10
 The modifications are to be considered as: Variant / normal resolution of the type
 変型 / 正常進化
 Date amendment is valid from List

Description of amendment 内容

The following items have been added.

WHEELS

- 51. Weight (per wheel, without tyre) 5.1 Kg
- 54. Rim width 114 mm 4½ inches

BRAKES

- Disc brake Front
- 94. Bore of wheel cylinder 47.6 mm
- 100. Outside diameter, 200 mm
- 101. Thickness of disc. 10 mm
- 102. Length of brake linings, 109 mm
- 103. Width of brake linings. 37 mm
- 104. Number of pads per brake. 2
- 105. Total area per brake. 6400 mm²

Photograph. F.

Front brake drum removed or disc with caliper(s).



Stamp and signature of the JAF

JAF公認印及び署名

三井平八郎

Heihaichiro Mitsui



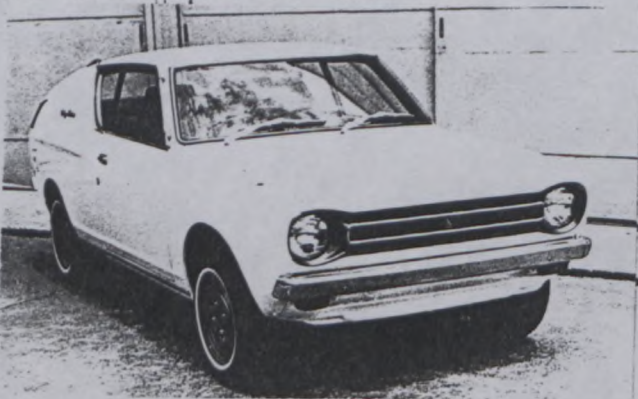
Stamp and signature of the F.I.A.

[Handwritten signature]

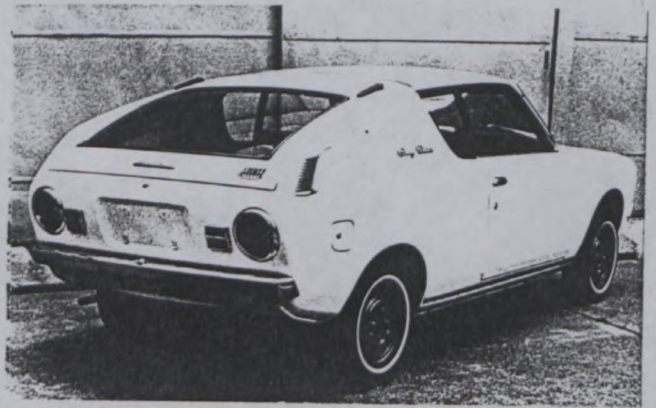
COUPE MODEL (KE10)

Photograph

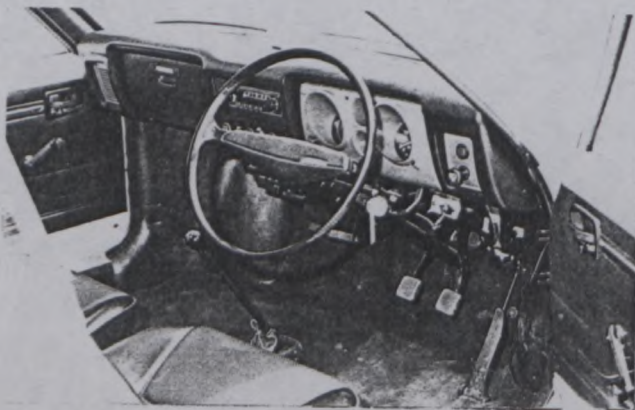
A. 3/4 view of car from front



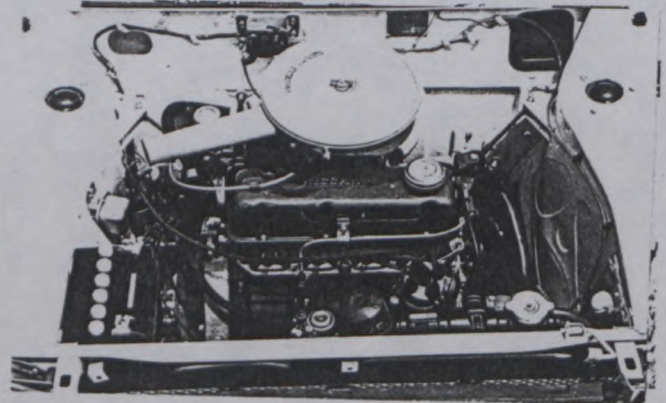
B. 3/4 view of car from rear



C. Interior view



D. Engine in car with all accessories, bonnet opened or removed



CAPACITIES AND DIMENSIONS

4. Overall length of the car	369.0 cm
5. Overall width of the car	149.0 cm
6. Overall height of the car	131.5 cm
9. <u>Weight</u> 645 Kg	1423 lbs

Width of the car measured in the vertical plane passing through the axle of the wheels.

Front 149.0 cm

ACCESSORIES AND UPHOLSTERY

38. Interior heating yes



Make NISSAN

Model E10
型式

J.A.F公認番号 T-164 Y-3

F.I.A. Rec. No. 5473

42. Weight of front seat(s), complete with supports and rails, out of the car

12 Kg x 2 lbs

ENGINE

156. Cooling fan dia 190 mm

157. Number of blades of cooling fan 5





JAPAN AUTOMOBILE FEDERATION

社団法人 日本自動車連盟

J.A.F. 公認番号 T-164 E-2

発効年月日 47.10.31

F.I.A. Homol. No 5473

3/1E

FEDERATION INTERNATIONALE DE L'AUTOMOBILE

Form of recognition accordance with Appendix J to the International Sporting Code.

国際スポーツ法典付則J項及びJAF国内競技車両規則に従った公認書式。

Make NISSAN MOTOR CO., LTD. **Model** E10 (NISSAN CHERRY)
 製造会社名 型式及び通称名
Modification's application starts with serial No. chassis 適用シャーシー番号 E10-063001
 engine 適用エンジン番号 A10
 Application of this amendment started the Nov. 1971
 適用年月日
 Commercial denomination after application of modifications
 The modifications are to be considered as: ~~Variation~~ / normal evolution of the type
 変更 / 正常進化
 Date amendment is valid from _____ List

Description of amendment 内容

The following items have added.

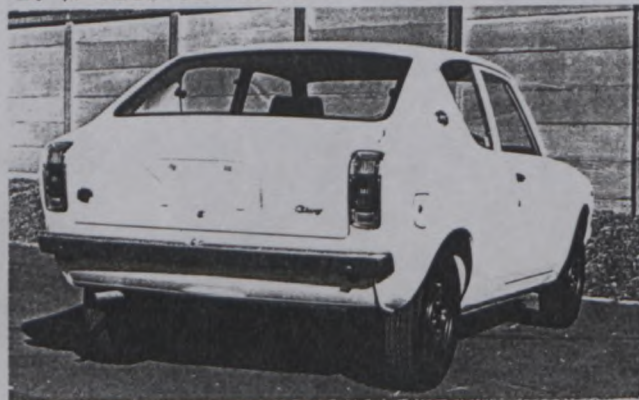
Photograph

2 Door Model

A. ¾ view of car from front



B. ¾ view of car from rear



Stamp and signature of the JAF

JAF公認印及び署名

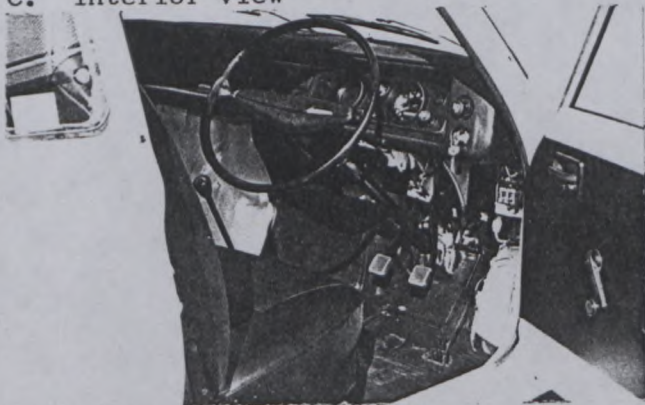
三井平八郎

Heihachiro Mitsui



Stamp and signature of the F.I.A.

C. Interior view

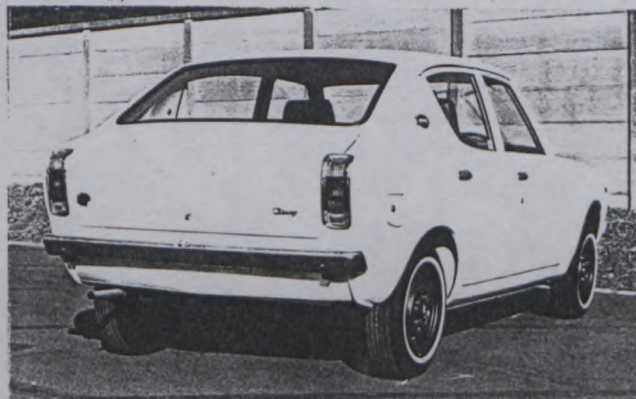


4 Door Model

A. 3/4 view of car from front



B. 3/4 view of car from rear



5. Overall width of the car 149.0 cm

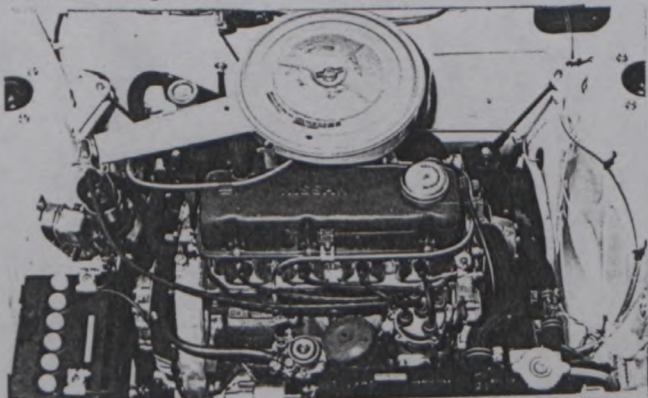
Width of the car measured in the vertical plane passing through the axle of the wheels

Front 149.0 cm

156. Cooling fan dia 190 mm

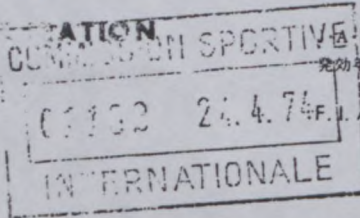
157. Number of blades of cooling fan 5

O. Engine in car with all accessories, bonnet opened or removed.





JAPAN AUTOMOBILE FEDERATION



F.I.A. Hom. No 5473

発効年月日

1973年12月31日

T-164 E-5

h/2E



FEDERATION INTERNATIONALE DE L'AUTOMOBILE

Form of recognition accordance with Appendix J to the International Sporting Code.

国際スポーツ法典付則J項及びJAF国内競技車両規則に従った公認書式。

Make NISSAN MOTOR CO., LTD. 製造会社名	Model E10 型式及び通称名	NISSAN CHERRY
Modification's application starts with serial	No. chassis engine	適用シャーシー型式番号 E10-000001 適用エンジン型式番号 A10-000001
Application of this amendment started the 適用年月日	SEP. 1973	
Commercial denomination after application of modifications		
The modifications are to be considered as: XXXXXX / normal evolution of the type XXXX / 正常進化		
Date amendment is valid from 1.4.74		List

Description of amendment 内容

The following items have been added for group 1

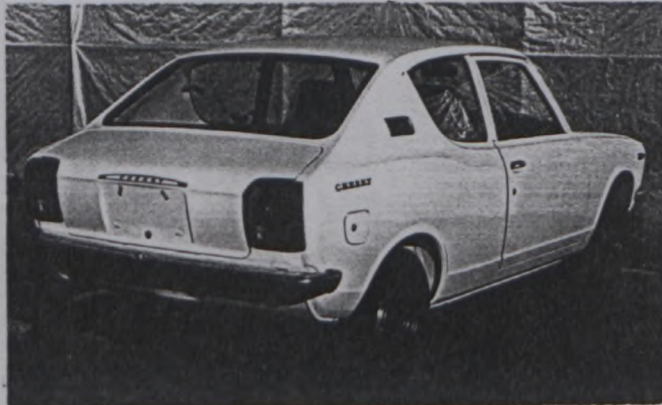
2DOOR SEDAN MODEL

Photograph

A, 3/4 view of car from front



B, 3/4 view of car from rear



Stamp and signature of the JAF

JAF公認印及び署名

難波靖彦

Yasuharu Nanba



Stamp and signature of the F.I.A.

Make NISSAN

Model 510

J.A.F.公認番号 E-164E-5

F.I.A. Rec. No. 5473

h/2E

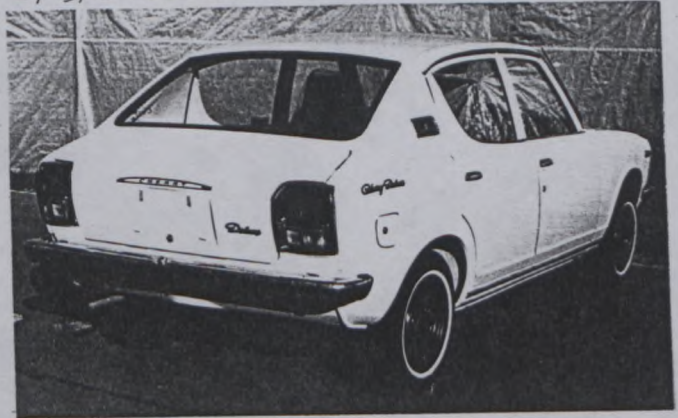
4DOOR SEDAN MODEL

Photograph

A, 3/4 view of car from front



B, 3/4 view of car from rear



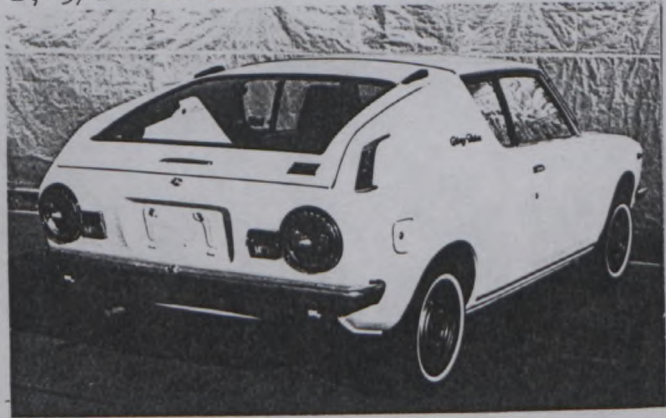
2DOOR COUPE MODEL

Photograph

A, 3/4 view of car from front



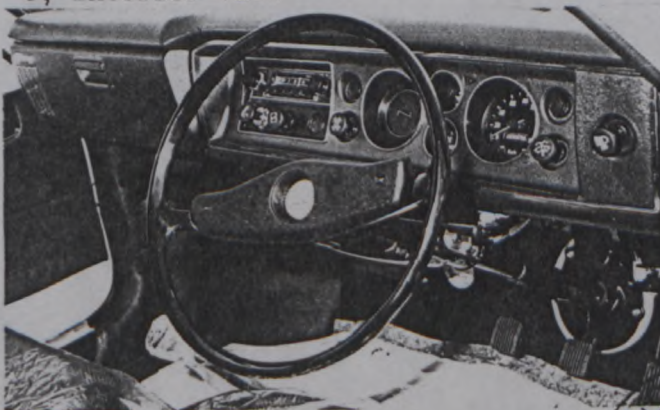
B, 3/4 view of car from rear



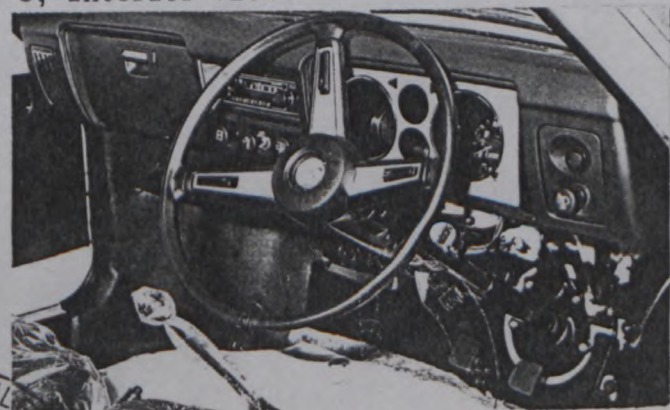
INSTRUMENT

Photograph

C, Interior view



C, Interior view





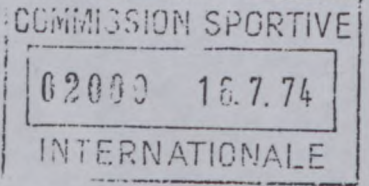
JAPAN AUTOMOBILE FEDERATION

社団法人 日本自動車連盟

J.A.F 公認番号 T-164E-6
発効年月日 1974年 4月30日

F. I. A. Homol. No 5473

5/3E



FEDERATION INTERNATIONALE DE L'AUTOMOBILE

Form of recognition accordance with Appendix J to the International Sporting Code.

国際スポーツ法典付則J項及びJAF国内競技車両規則に従った公認書式。

Make NISSAN MOTOR CO. LTD. **Model** E10 NISSAN CHERRY
 製造会社名 型式及び通称名

Modification's application starts with serial No. **chassis** 適用シャーシー型式番号 E10-000001
engine 適用エンジン型式 A10

Application of this amendment started the DEC. 1973
 適用年月日

Commercial denomination after application of modifications KE10

The modifications are to be considered as: ~~variant~~ / normal evolution of the type
~~変異~~ / 正常進化

Date amendment is valid from 1-8-74 **List**

Description of amendment 内容

The following items have been added for group 1.

WHEELS

50. Type	Pressed steel			
51. Weight(per wheel, without tyre)	6.9 kg			
52. Method of attachment	4 Nuts			
53. Rim diameter	330 mm	13	inches	
54. Rim width	114 mm	4.5	inches	

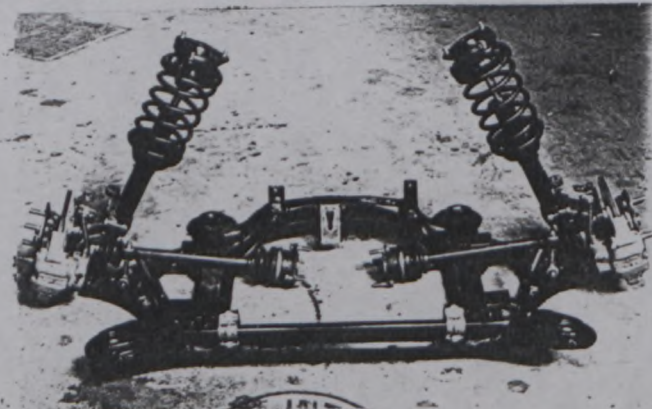
SUSPENSION

72. Stabilizer Torsion bar

Photograph

Road wheel.

D. Front axle complete.



Stamp and signature of the JAF

JAF公認印及び署名

難波靖治

Yasuharu Nanba



Stamp and signature of the F. I. A.





JAPAN AUTOMOBILE FEDERATION

社団法人 日本自動車連盟

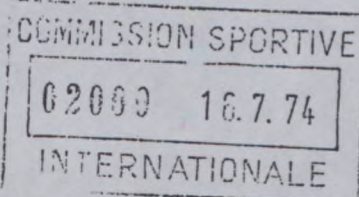
J.A.F.公認番号 T-164E-6
発効年月日 1974年 4月30日
F.I.A. Homol. No 5473

5/3E

FEDERATION INTERNATIONALE DE L'AUTOMOBILE

Form of recognition accordance with
Appendix J to the International Sporting Code.

国際スポーツ法典付則J項及びJ.A.F.国内競技車両規則に従った公認書式。



Make NISSAN MOTOR CO. LTD.	Model E10	NISSAN CHERRY
製造会社名	型式及び通称名	
Modification's application starts with serial	No. chassis 適用シャーシー型式番号	E10-000001
	engine 適用エンジン型式	A10
Application of this amendment started the	DEC. 1973	
適用年月日		
Commercial denomination after application of modifications	KE10	
The modifications are to be considered as: Variant / normal evolution of the type		
	XXXX / 正常進化	
Date amendment is valid from 1.8.74	List	

Description of amendment 内容

The following items have been added for group 1.

WHEELS

50. Type	Pressed steel		
51. Weight(per wheel, without tyre)	6.9 kg		
52. Method of attachment	4 Nuts		
53. Rim diameter	330 mm	13	inches
54. Rim width	114 mm	4.5	inches

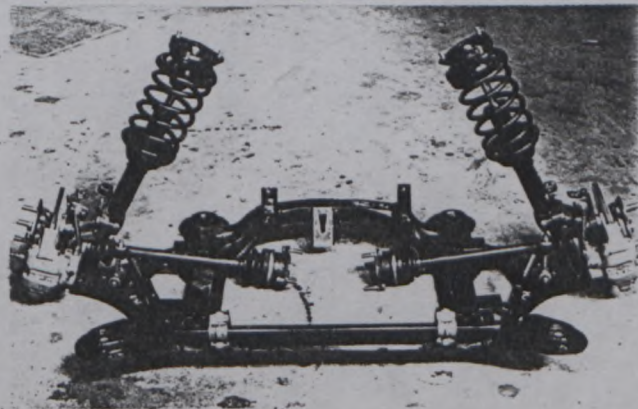
SUSPENSION

72. Stabilizer Torsion bar

Photograph

Road wheel.

D. Front axle complete.



Stamp and signature of the JAF

JAF公認印及び署名

難波靖彦

Yasuharu Nanba



Stamp and signature of the F.I.A.





JAPAN AUTOMOBILE FEDERATION

社団法人 日本自動車連盟

J.A.F 公認番号

T-164E-7

発効年月日

1975年6月30日

F. I. A. Homol. No

5473

6/4E

FEDERATION INTERNATIONALE DE L'AUTOMOBILE

Form of recognition accordance with Appendix J to the International Sporting Code.

国際スポーツ法典付則J項及びJAF国内競技車両規則に従った公認書式。

Make NISSAN MOTOR CO., LTD.	Model E10	NISSAN CHERRY
製造会社名	型式及び通称名	
Modification's application starts with serial	No. chassis 適用シャーシー型式番号	E10-063001
Application of this amendment started the 適用年月日	engine 適用エンジン型式番号	A10
Commercial denomination after application of modifications	NOV, 1971	
The modifications are to be considered as: NON EXE / normal evolution of the type		
Date amendment is valid from	1.10.75	List

Description of amendment 内容

CORRECTION

F.I.A. Homol. No. 5473/3/1E Page 2

157. Number of blades of cooling fan

5 → 6

Stamp and signature of the JAF

JAF公認印及び署名

難波靖博

Yasuharu Nanba



Stamp and signature of the F.I.A.





JAPAN AUTOMOBILE FEDERATION

社団法人 日本自動車連盟

J.A.F公認番号 T-164V-8
発効年月日 1975年6月30日
F.I.A. Homol. No 5/73

713V

FEDERATION INTERNATIONALE DE L'AUTOMOBILE

Form of recognition accordance with
Appendix J to the International Sporting Code.

国際スポーツ法典付則J項及びJAF国内競技車両規則に従った公認書式。

Make NISSAN MOTOR CO., LTD. 製造会社名	Model E10 型式及び通称名	NISSAN CHERRY
Modification's application starts with serial	No. chassis 適用シャーシー型式番号 engine 適用エンジン型式番号	E10-063001 A10
Application of this amendment started the 適用年月日	FEB, 1975.	
Commercial denomination after application of modifications	E10, KE10.	

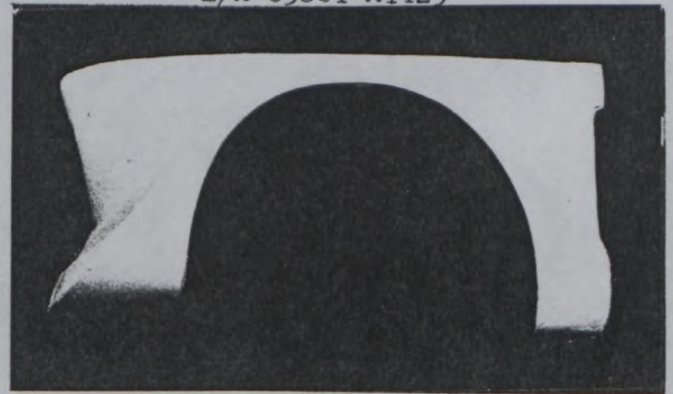
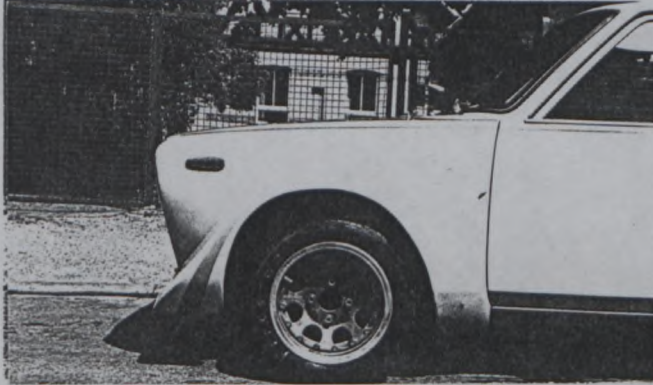
The modifications are to be considered as: Variant / ~~normal evolution of the type~~ "valable en Groupe 2 uniquement"
Date amendment is valid from 1.10.75 List "valid for Group 2 only"

Description of amendment 内容
OPTIONAL EQUIPMENT

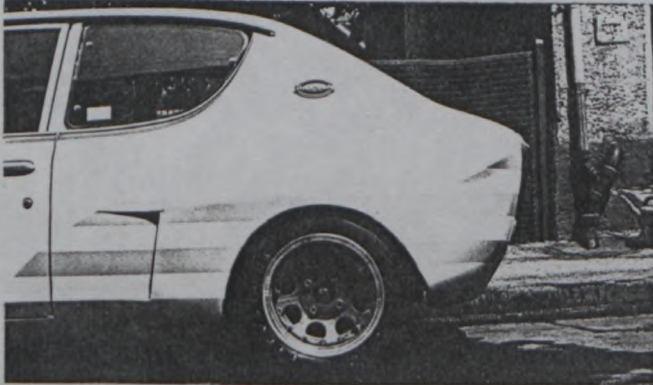
VALID FOR GROUP 2 ONLY

Parts No. R/H 63860-M1423
L/H 63861-M1423

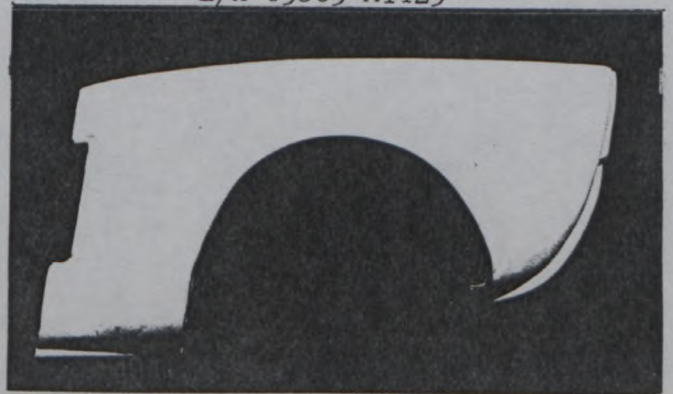
FRONT OVER FENDER



REAR OVER FENDER



Parts No. R/H 63862-M1423
L/H 63863-M1423



Stamp and signature of the JAF

JAF公認印及び署名

難波靖治

Yasuharu Nanba



Stamp and signature of the F.I.A.





JAPAN AUTOMOBILE FEDERATION

社団法人 日本自動車連盟

J.A.F. 公認番号 T-164V-9
発効年月日 1979年4月30日
F.I.A. Homol. No 5473/

08/04V

FEDERATION INTERNATIONALE DE L'AUTOMOBILE

Form of recognition accordance with
Appendix J to the International Sporting Code.

国際スポーツ法典付則J項及びJAF国内競技車両規則に従った公認書式。

Make NISSAN MOTOR CO., LTD. Model E10 NISSAN CHERRY
 製造会社名 型式及び通称名
 Modification's application starts with serial No. chassis 適用シャーシー型式番号 E10
 engine 適用エンジン型式 A10
 Application of this amendment started the May, 1978
 適用年月日
 Commercial denomination after application of modifications E10, KE10.
 The modifications are to be considered as: Variant / ~~normal variation of the type~~
 変型 / ~~通常の変型~~
 Date amendment is valid from -1. JUL 1979 List

Description of amendment 内容

OPTIONAL EQUIPMENT

VALID FOR GROUP 2 ONLY

The following items have been added for group 2.

NOTE: The item number in the brackets is according to the old recognition form.

FINAL DRIVE

- 103. (293) Number of teeth 63/13, 71/14, 64/12.
- 104. (293) Ratio 4.84 5.07 5.33

GEAR-BOX

- 92. (270) Manual type, make NISSAN "valable en Groupe 2 uniquement"
- 93. (271) Number of gear-box ratios forward 4 "valid for Group 2 only"
- 96. (277)

	Alternative manual	
	Ratio	No. teeth
1	2.55	$\frac{30}{22} \times \frac{30}{16}$
2	1.67	$\frac{30}{22} \times \frac{27}{22}$
3	1.26	$\frac{30}{22} \times \frac{25}{22}$
4	1.00	
Rev	2.98	$\frac{30}{22} \times \frac{14}{16} \times \frac{35}{14}$



Stamp and signature of the JAF

JAF公認印及び署名

難波靖治

Yasuharu Nanba



Stamp and signature of the F.I.A.

[Signature]