

Make **Mitsubishi**

Model **A27**

F. I. A. Rec. No.

IMPORTANT - the underlined items must be stated in two measuring systems, one of which must be the metric system. See conversion table hereafter.

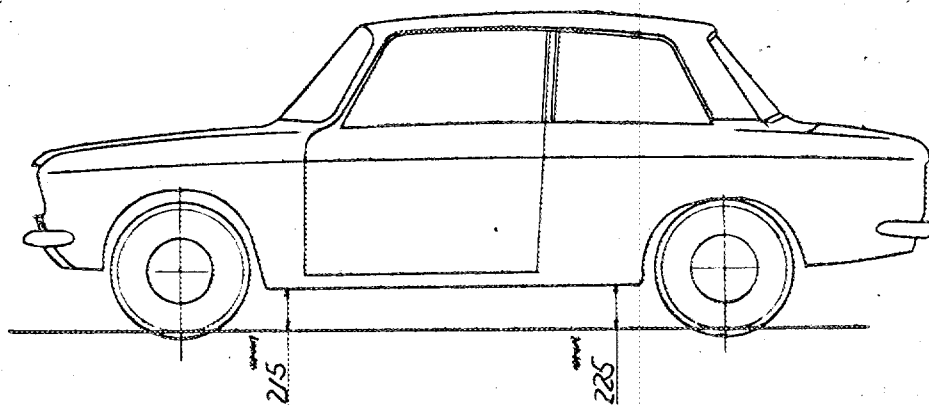
CAPACITIES AND DIMENSIONS

1. <u>Wheelbase</u>	2,350	mm	92.51	inches
2. <u>Front track</u>	1,260	mm	49.61	inches *
3. <u>Rear track</u>	1,210	mm	47.64	inches *
4. Overall length of the car		397.5	cm	inches
5. Overall width of the car		149.5	cm	inches
6. Overall height of the car		140.5	cm	inches
7. <u>Capacity of fuel tank (reserve included)</u>			45	ltrs
	11.9	Gallon US		Gallon Imp.
8. Seating capacity	5			
9. <u>Weight</u> , total weight of the car with normal equipment, water, oil and spare wheel but without fuel nor repair tools:				
	865	kg	1,907	lbs
				cwt

* Differences in track caused by the use of other wheels with different rim widths must be stated when recognition is requested for the wheels concerned.

Specify ground clearance in relation to the track and give drawing of two fixed points of the vehicle's structure at which measurements are taken.

These ground clearance dimensions are only for information when checking the track and can in no way affect the eligibility of the car.



CONVERSION TABLE

1 inch / pouce	--	2.54 cm	1 quart US	--	0.9464 ltrs
1 foot / pied	--	30.4794 cm	1 pint (pt)	--	0.568 ltrs
1 square inch / pouce carré	--	6.452 cm ²	1 gallon imp.	--	4.546 ltrs
1 cubic inch / pouce cube	--	16.387 cm ³	1 gallon US	--	3.785 ltrs
1 pound / livre (lb)	--	453.593 gr.	1 hundred weight (cwt)	--	50.802 kg

Make Mitsubishi

Model A27

F. I. A. Rec. No.

CHASSIS AND COACHWORK (Photographs A, B and C)

20. Chassis/body construction : ~~separate~~ / unitary construction
21. Unitary construction, material (s) Steel
Separate construction
22. Separate Constructions: Material(s) of chassis
23. Material (s) of coachwork
24. Number of doors 2 Material (s) Steel
25. Material (s) of bonnet Steel
26. Material (s) of boot lid Steel
27. Material (s) of rear-window Glass
28. Material (s) of windscreen Glass
29. Material (s) of front-door windows Glass
30. Material (s) of rear-door windows -
31. Sliding system of door windows Vertical, Manual
32. Material (s) of rear-quarter light Glass

ACCESSORIES AND UPHOLSTERY

38. interior heating : ~~YES~~ - no 39. Air-conditioning : ~~YES~~ - no
40. Ventilation : yes - ~~NO~~
41. Front seats, type of seats and upholstery Separate, Vinyl Leather
42. Weight of front seat (s), complete with supports and rails, out of the car :
14.3 x 2 = 28.6 kg lbs
43. Rear seats, type of seats and upholstery Bench, Vinyl Leather
44. Front bumper, material (s) Steel Weight 4.7 kg lbs
45. Rear bumper, material (s) Steel Weight 4.0 kg lbs

WHEELS

50. Type Pressed Steel
51. Weight (per wheel, without tyre) 6.5 kg lbs
52. Method of attachment Wheel nut (4 nuts)
53. Rim diameter 355 mm 14.0 inches
54. Rim width 114 mm 4.5 inches

STEERING

60. Type Ball nut
61. Servo-assistance : ~~YES~~ - no
62. Number of turns of steering wheel from lock to lock 2.5
63. in case of servo-assistance

SUSPENSION

- 70. Front suspension (photogr. D), type Independent, Wishbone
- 71. Type of spring Coil
- 72. Stabiliser (if fitted) Torsion Bar
- 73. Number of shockabsorbers 2
- 74. Type Hydraulic Telescopic
- 78. Rear suspension (photogr. E), type Rigid
- 79. Type of spring Semi-elliptic Leaf
- 80. Stabiliser (if fitted) -
- 81. Number of shockabsorbers 2
- 82. Type Hydraulic Telescopic

BRAKES (photographs F and G)

- 90. System Hydraulic
- 91. Servo-assistance (if fitted), type -
- 92. Number of hydraulic master cylinders 2

	FRONT		REAR		
93. Number of cylinders per wheel	2		1		
94. Bore of wheel cylinder (s)	57.3	mm	in.	17.5	mm
Drum brakes					
95. Inside diameter		mm	in.	228.6	mm
96. Length of brake linings		mm	in.	220.0	mm
97. Width of brake linings		mm	in.	35.0	mm
98. Number of shoes per brake			2		
99. Total area per brake		mm ²	sq. in.	15400	mm ²
Disc brakes					
100. Outside diameter	255.0	mm	in.		mm
101. Thickness of disc	11.0	mm	in.		mm
102. Length of brake linings	60.0	mm	in.		mm
103. Width of brake linings	45.0	mm	in.		mm
104. Number of pads per brake	2				
105. Total area per brake	5400	mm ²	sq. in.		mm ²

Make Mitsubishi

Model A27

F. I. A. Rec. No.

ENGINE (photographs J and K)

- 130. Cycle 4
- 131. Number of cylinders 4
- 132. Cylinder arrangement In-Line
- 133. Bore 85 mm 3.35 in. 134. Stroke 66 mm 2.60 in.
- 135. Capacity per cylinder 374.5 cm³ 22.88 cu. in.
- 136. Total cylinder-capacity 1498 cm³ 91.41 cu. in.
- 137. Material (s) of cylinder block Cast-Iron
- 138. Material (s) of sleeves (if fitted) -
- 139. Cylinder-head, material (s) Aluminium Alloy Number fitted 1
- 140. Number of inlet ports 4
- 141. Number of exhaust ports 4
- 142. Compression ratio 10.0
- 143. Volume of one combustion chamber 41.6 cm³ cu. in.
- 144. Piston, material Aluminium Alloy
- 145. Number of rings 3
- 146. Distance from gudgeon pin centre line to highest point of piston crown 37.5 mm inches
- 147. Crankshaft : ~~XXXX~~ / stamped
- 148. Type of crankshaft : integral / ~~XXXX~~
- 149. Number of crankshaft main bearings 3
- 150. Material of bearing cap Cast-Iron
- 151. System of lubrication : ~~XXXX~~ / oil in sump
- 152. Capacity, lubricant 4 ltrs pts quarts US
- 153. Oil cooler : ~~XXXX~~ / no
- 154. Method of engine cooling Water
- 155. Capacity of cooling system 6.7 ltrs pints quarts US
- 156. Cooling fan (if fitted), dia. 32.5 cm inches
- 157. Number of blades of cooling fan 6

Bearings

- 158. Crankshaft main, type Plain Dia. 74 mm in.
- 159. Connecting rod big end, Plain Dia. 60 mm in.

Weights

- 160. Flywheel (clean) 11.0 kg lbs
- 161. Flywheel with clutch (all turning parts) 16.0 kg lbs
- 162. Crankshaft 15.1 kg lbs 163. Connecting rod 1.07 kg lbs
- 164. Piston with rings and pin 0.53 kg lbs

FOUR STROKE ENGINES

- 170. Number of camshafts **1** 171. Location **Cylinder Block**
- 172. Type of camshaft drive **Chain**
- 173. Type of valve operation **Pushrod and Rocker**

INLET (see page 8) *

- 180. Material(s) of inlet manifold **Aluminium Alloy**
- 181. Diameter of valves **38** mm **1.50** inches
- 182. Max. valve lift **9.8** mm **0.386** in.
- 183. Number of valve springs **1**
- 184. Type of spring **Coil**
- 185. Number of valves per cylinder **1**
- 186. Tappet clearance for checking timing (cold) **0.20** mm **inches**
- 187. Valves open at (with tolerance for tappet clearance indicated) **37° ± 2.5° B. T. D. C.**
- 188. Valves close at (with tolerance for tappet clearance indicated) **62° ± 2.5° A. B. D. C.**
- 189. Air filter, type **Dry**

EXHAUST (see page 8)

- 195. Material (s) of exhaust manifold **Steel**
- 196. Diameter of valves **30** mm **1.18** inches
- 197. Max. valve lift **9.8** mm **0.386** in.
- 198. Number of valve springs **1**
- 199. Type of spring **Coil**
- 200. Number of valves per cylinder **1**
- 201. Tappet clearance for checking timing (cold) **0.20** mm **inches**
- 202. Valves open at (with tolerance for tappet clearance indicated) **79° ± 2.5° B. B. D. C.**
- 203. Valves close at (with tolerance for tappet clearance indicated) **20° ± 2.5° A. T. D. C.**

CARBURETION (photograph N)

- 210. Number of carburetors fitted **2**
- 211. Type **Side Draught**
- 212. Make **HITACHI**
- 213. Model **HJK38W**
- 214. Number of mixture passages per carburettor **1**
- 215. Flange hole diameter of exit port(s) of carburettor **38** mm **in.**
- 216. Minimum dimensions of mixture passage(s) with piston at max. height (example: SU) **29** mm **inches**

INJECTION (if fitted)

- 220. Make of pump
- 221. Number of plungers
- 222. Model or type of pump
- 223. Total number of injectors
- 224. Location of injectors
- 225. Minimum diameter of inlet pipe **mm** **inches**

* : for additional information concerning two-stroke engines and super-charged engines see page 13.

Make Mitsubishi

Model A27

F. I. A. Rec. No.

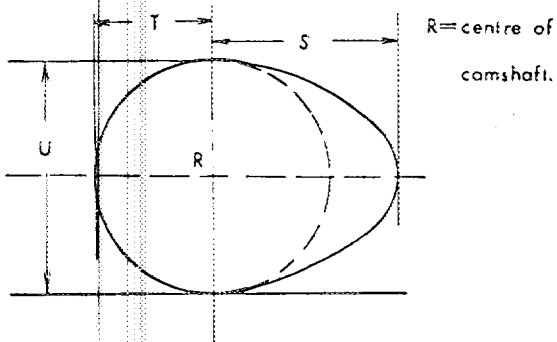
ENGINE ACCESSORIES

- 230. Fuel pump : mechanical ~~and electrical~~ 231. No. fitted 1
- 232. Type of ignition system Make and Break Ignition 233. No. of distributors 1
- 234. No. of ignition coils 1 235. No. of spark plugs per cylinder 1
- 236. Generator, type ~~dyno~~ alternator-number fitted 1 237. Method of drive V Belt
- 238. Voltage of generator 12 volts 239. Battery, number 1
- 240. Location Engine Room
- 241. Voltage of battery 12 volts

ENGINE AND CAR PERFORMANCES (as declared by manufacturer in catalogue)

- 250. Max. engine output 85 PS (type of horsepower: JIS) at 5,500 rpm
- 251. Maximum rpm 6,000 output at that figure 84 PS
- 252. Maximum torque 12.0 Kg-m at 4,000 rpm
- 253. Maximum speed of the car 155 km/hour miles / hour

255.



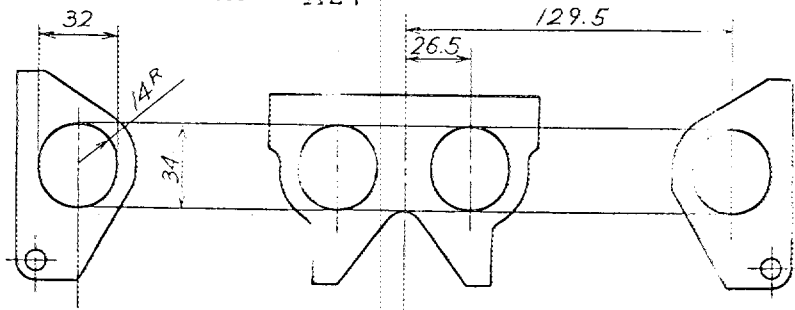
Inlet cam

S =	22.5	mm	0.886	inches
T =	15.8	mm	0.622	inches
U =	31.6	mm	1.244	inches

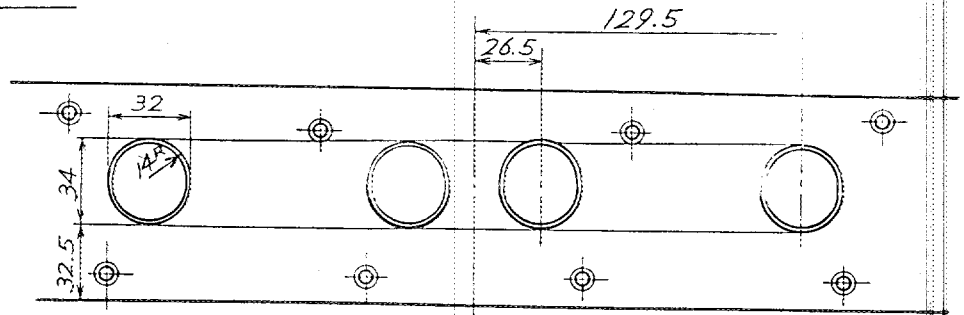
Exhaust cam

S =	22.5	mm	0.886	inches
T =	15.8	mm	0.622	inches
U =	31.6	mm	1.244	inches

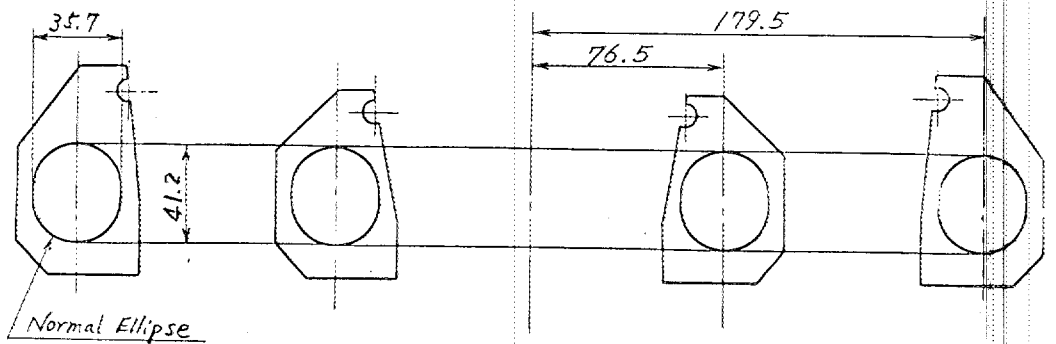
Drawing inlet manifold ports, side of cylinder-head. Indicate scale or dimensions and manufacturing tolerance.



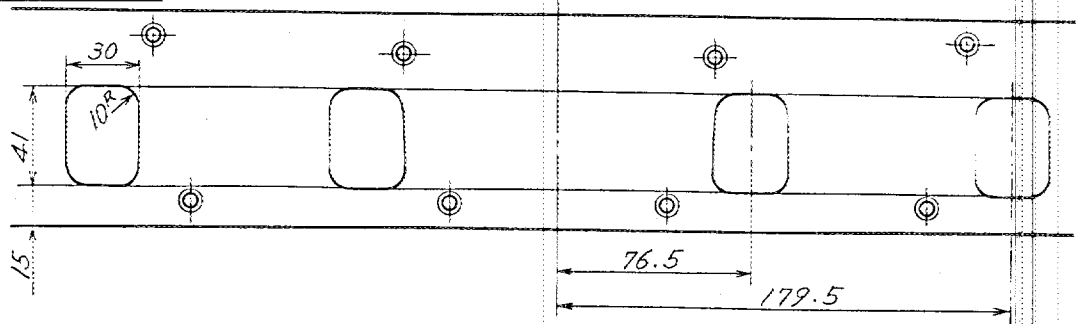
Drawing of entrance to inlet port of cylinder-head. Indicate scale or dimensions and manufacturing tolerance.



Drawing exhaust manifold ports, side of cylinder-head. Indicate scale or dimensions and manufacturing tolerance.



Drawing of exit to exhaust port of cylinderhead. Indicate scale or dimensions and manufacturing tolerance.



Unit; mm
Tolerance; ± 1.5

Make Mitsubishi

Model A27

F. A. Rec. No.

DRIVE TRAIN

CLUTCH

260. Type of clutch Dry Single Plate

261. No. of plates 1

262. Dia. of clutch plates 20.3 cm inches

263. Dia. of linings inside 14.0 cm in. outside 20.0 cm in.

264. Method of operating clutch Hydraulic

GEAR BOX (photograph H)

270. Manual type, make Mitsubishi

Method of operation Mechanical

271. No. of gear-box ratios forward 4

272. Synchronized forward ratios 1, 2, 3, 4

273. Location of gear-shift Floor

274. Automatic, make Borg Warner

type M35

275. No. of forward ratios 3

276. Location of gear-shift Column

277.	Manual		Automatic		Alternative manual/ synchro			
	Ratio	No. teeth	Ratio	No. teeth	Ratio	No. teeth	Ratio	No. teeth
1	3.474	(30/19 x 33/15)	2.393	(67/17x17/16 x16/28)	3.579	(30/19 x 34/15)	3.257	(30/19 x 33/16)
2	2.105	(30/19 x 28/21)	1.450	(32/16x16/17 x17/28+1)	2.180	(30/19 x 29/21)	2.030	(30/19 x 27/21)
3	1.397	(30/19 x 23/26)	1.000		1.645	(30/19 x 25/20)	1.336	(30/19 x 22/26)
4	1.000				1.000		1.000	
5								
6								
reverse	3.887	(30/19 x 24/13 x32/24)	2.094	(67/17x17/32)	3.887	(30/19x24/13 x32/24)	3.887	(30/19x24/13 x32/24)

278. Overdrive, type

279. Forward gears on which overdrive can be selected

280. Overdrive ratio

FINAL DRIVE

290. Type of final drive Hypoid Gear

291. Type of differential Bevel Gear

292. Type of limited slip differential (if fitted) —

293. Final drive ratio 3.889 4.222 4.625 4.875

Number of teeth 35/9 38/9 37/8 39/8

Make Mitsubishi

Model A27

F. I. A. Rec. No.

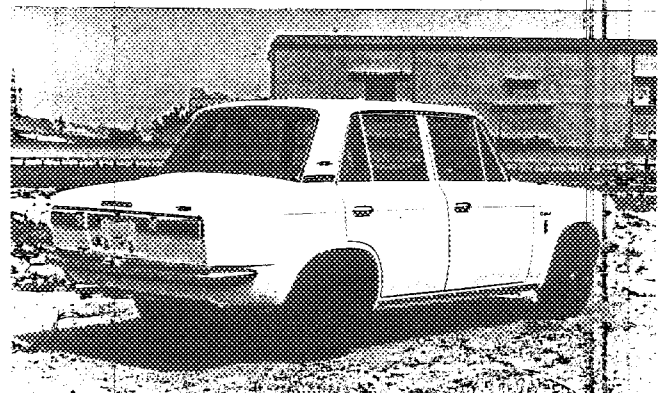
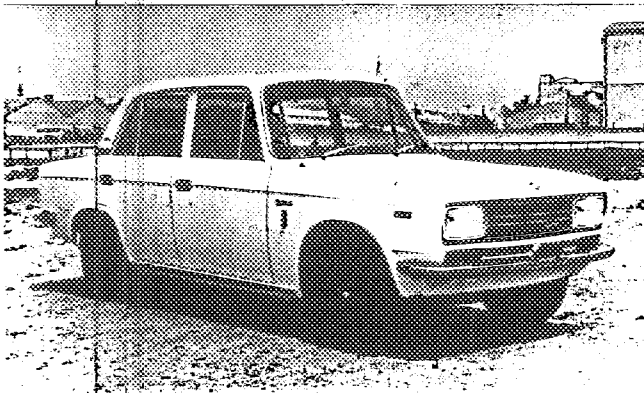
IMPORTANT: The conformity of the car with the following items of the present recognition form is to be disregarded during the scrutineering, when the vehicle has been entered in group 2 (Touring cars) or 3 (Grand Touring cars) : 41, 72, 80, 91, 142, 143, 144, 145, 146, 153, 156, 157, 160, 161, 162, 163, 164, 182, 184, 186, 187, 188, 189, 199, 201, 202, 203, 212, 213, 215, 216, 222, 225, 230, 250, 251, 252, 253, and photographs I, M, N, and page 8.

During the scrutineering of cars entered in group 4 (Sportscars) only the following items of the present recognition form are to be taken into consideration : 1, 2, 3, 9, 20, 21, 22, 23, 24, 25, 26, 70, 71, 78, 79, 90, 130, 131, 132, 133, 134, 135, 136, 137, 138, 139, 140, 141, 147, 148, 149, 150, 158, 159, 170, 171, 172, 173, 185, 200, 270, 271, 274, 275, 290, 291, 292 and photographs A, B, D, E, F, G, H, J, K, and O.

Optional equipment affecting preceding information. This to be stated together with reference number.

7. Capacity of fuel tank 90 Ltrs. 23.8 Gallon US

o Four Door Sedan (Photograph A, B)



The model produced on the same line as 2 door sedan .

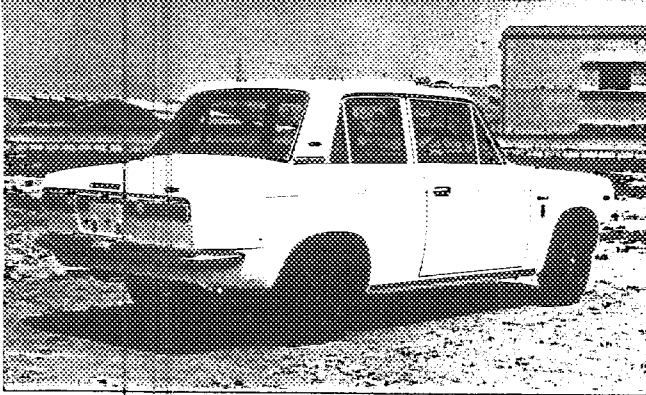
Make Mitsubishi

Model A27

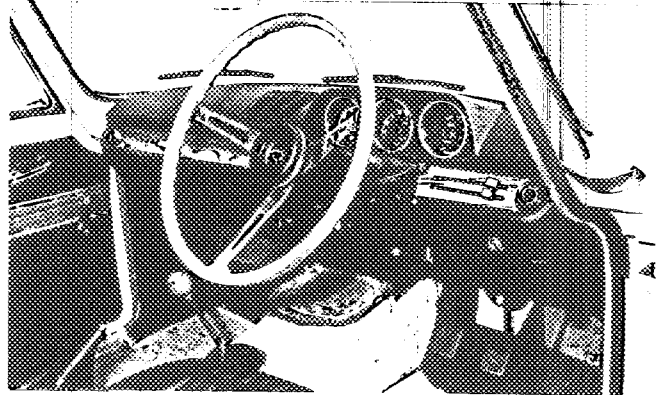
F. I. A. Rec. No.

Photograph

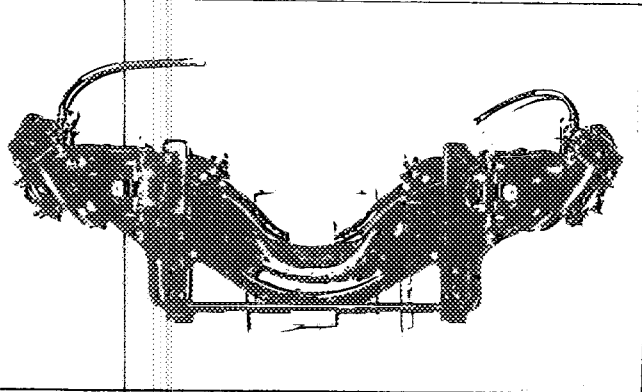
B, 3/4 view of car from rear



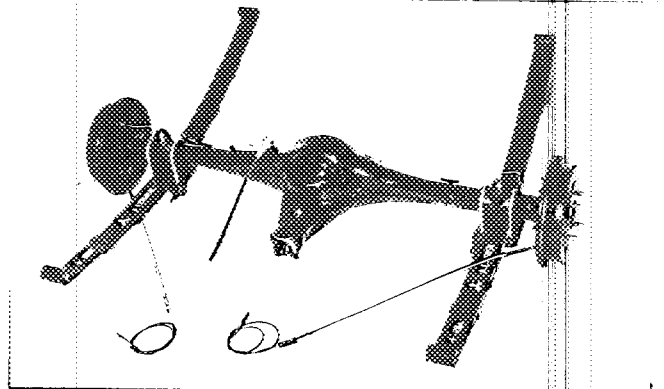
C, interior view of car through driver's door (open or removed) with dashboard



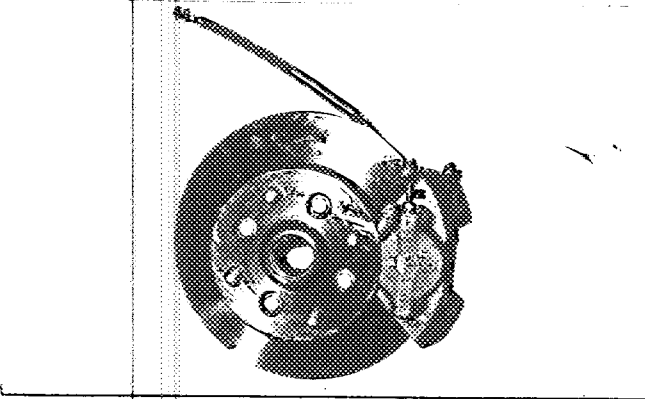
D, front axle complete, removed from car. Without wheels.



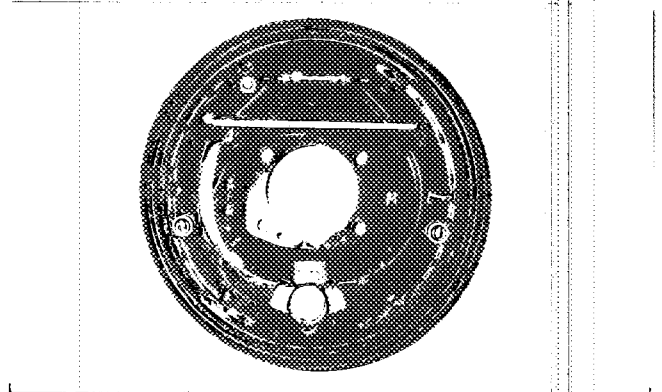
E, Rear axle complete without wheels, removed from car.



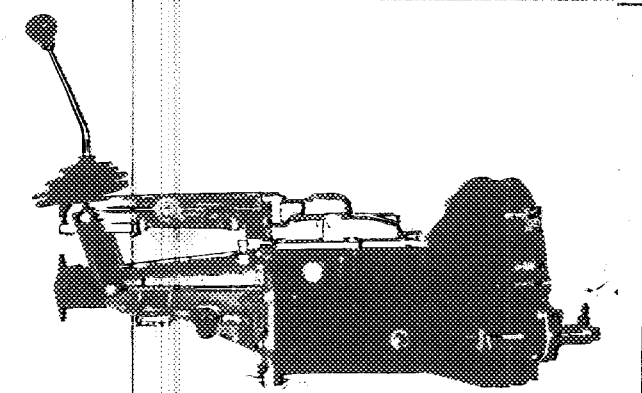
F, front brake, drum removed or disc with calipers



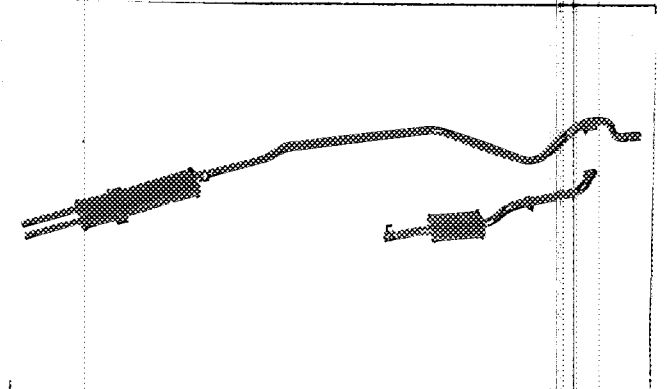
G, rear brake, drum removed or disc with calipers



H, gear-box, view from side



I, silencer + exhaust pipes after exhaust manifold



Make Mitsubishi

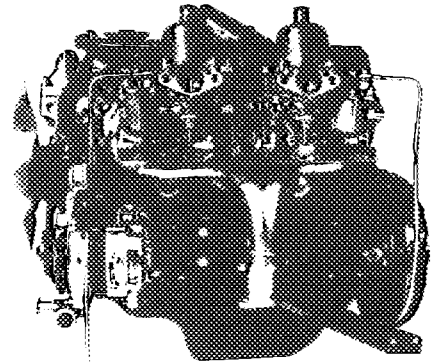
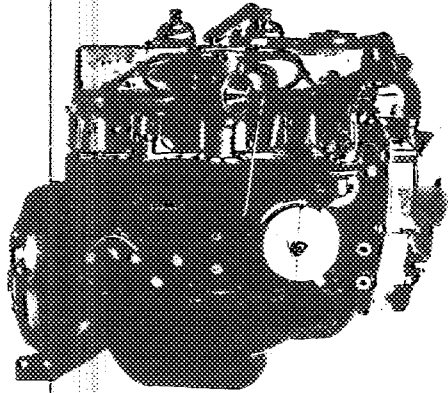
Model A27

F. I. A. Rec. No

Photograph

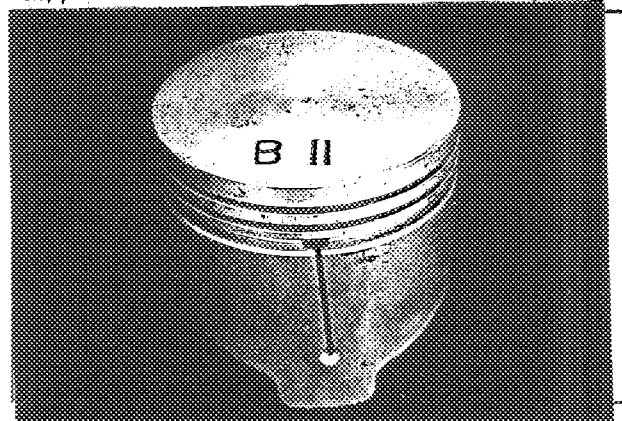
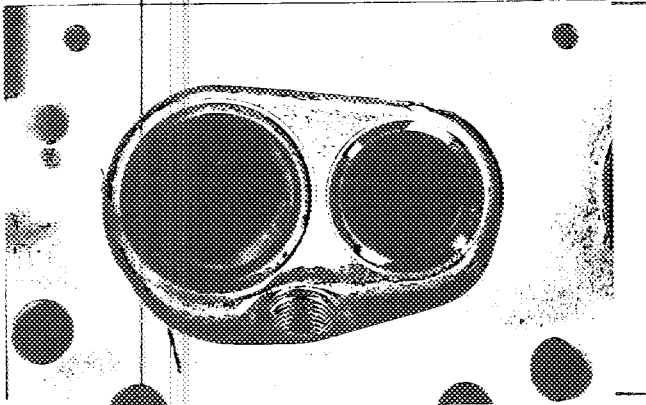
engine unit out of car, from right. With clutch and accessories but without air filter nor gear-box.

Engine unit out of car, from left. With clutch and accessories but without gear-box nor air filter.



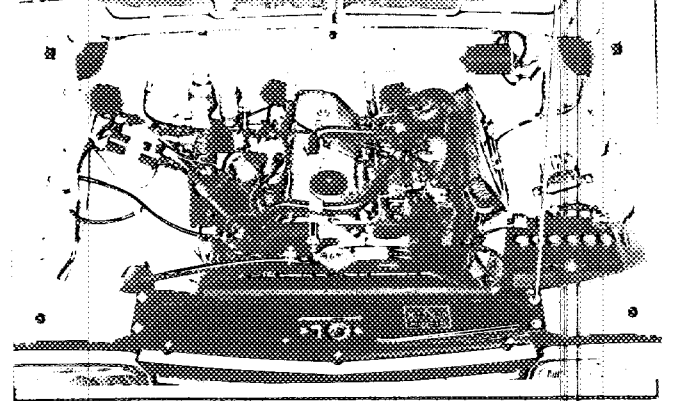
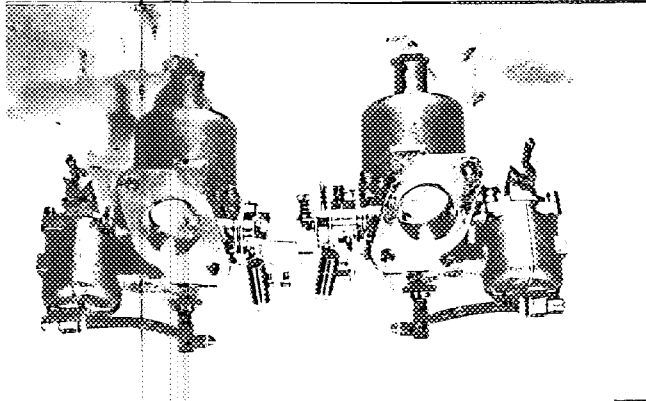
L, combustion chamber

M, piston crown



N, Carburettor (view from side of manifold)

O, engine in car with all accessories, bonnet open or removed.



P, inlet manifold

Q, exhaust manifold

