



JAPAN AUTOMOBILE FEDERATION

F. I. A. Registration No. 1427
Group 2 TOURING CARS

FEDERATION INTERNATIONALE DE L'AUTOMOBILE

Form of recognition in accordance with
Appendix J to the International Sporting Code.

Manufacturer: **ISUZU MOTORS LIMITED**

Serial No. of chassis **PR20- 4037701**
engine **G150- 332758**

Recognition is valid from **1st May 1966**

The manufacturing of the model described in this recognition form was started on **APR. 1965** and the minimum production of **1000** identical cars, in accordance with the specifications of this form was reached on **FEB. 1966**

Cylinder-capacity **1471** cm³ **89.8** cu. in.

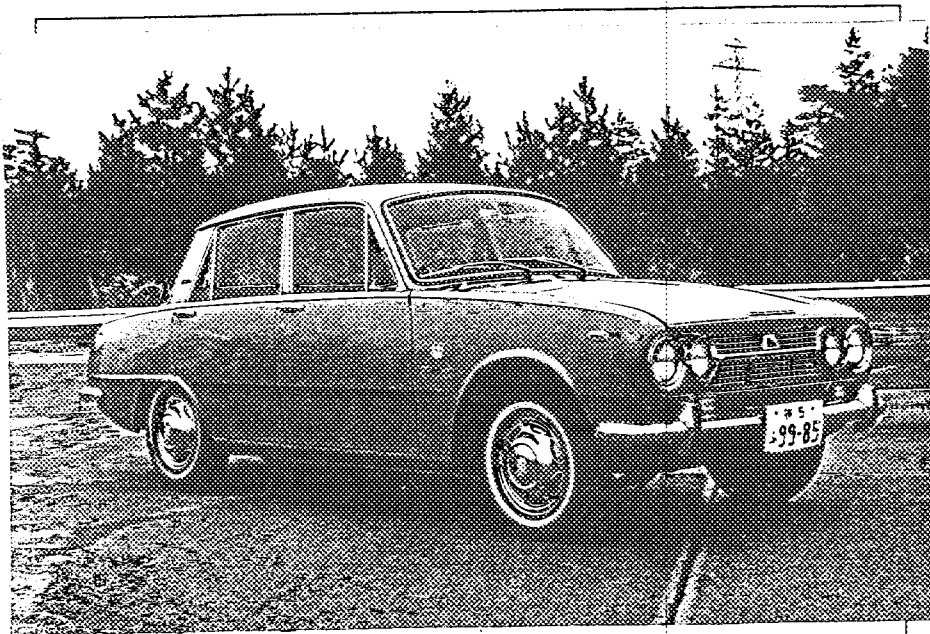
Model **ISUZU PR20S (BELLETTIS)**

Manufacturer **ISUZU MOTORS LIMITED**

Manufacturer **ISUZU MOTORS LIMITED**

List **14/4**

Photograph A, 3/4 view of car from front



The vehicle described in this form has been subject to the following amendments :

Variants

on	19	rec. No.	List
on	19	rec. No.	List
on	19	rec. No.	List
on	19	rec. No.	List
on	19	rec. No.	List

Normal evolution of the type

on	19	rec. No.	List
on	19	rec. No.	List
on	19	rec. No.	List
on	19	rec. No.	List
on	19	rec. No.	List

Stamp and signature of the
National Sporting Authority

Stamp and signature of the F. I. A.

Julius [Signature]

Photograph

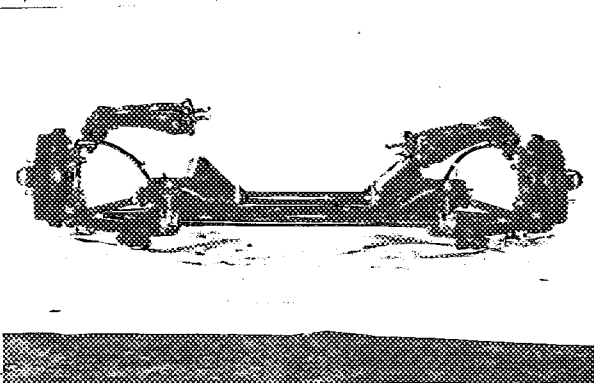
B. 3/4 view of car from rear



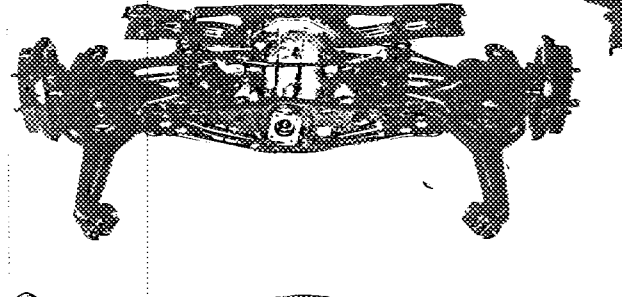
C. interior view of car through driver's door (ones or removed)



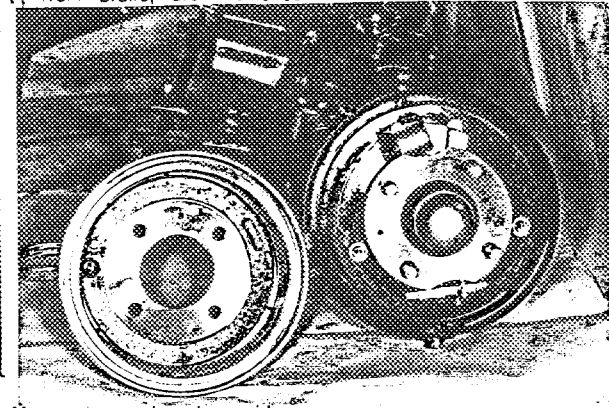
D. front axle complete, removed from car. Without wheels.



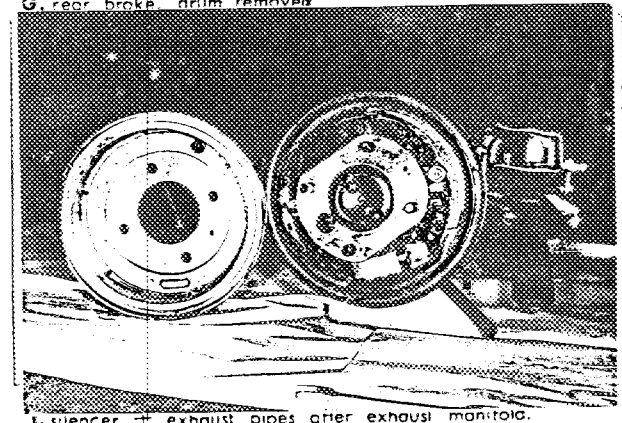
E. Rear axle complete without wheels, removed from car.



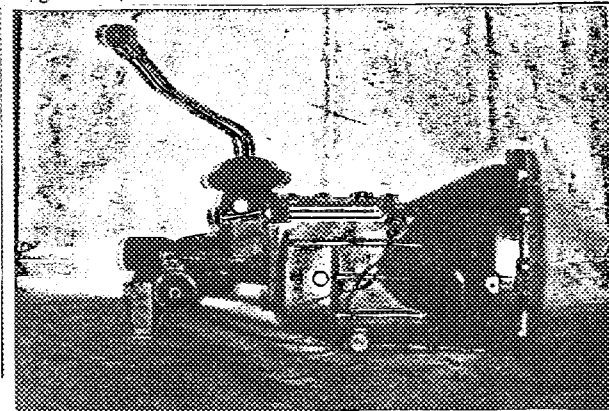
F. front brake, drum removed



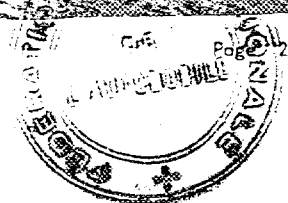
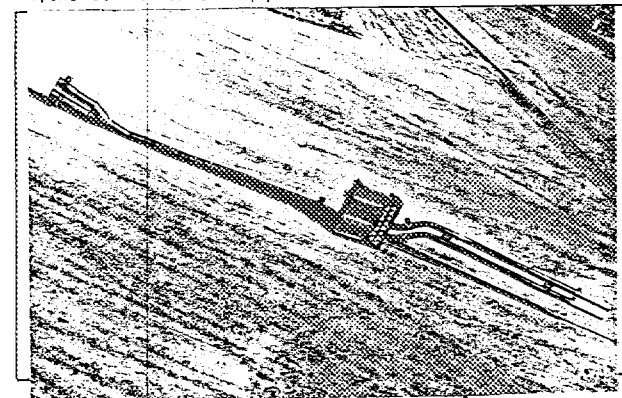
G. rear brake drum removed



H. gear-box, view from side

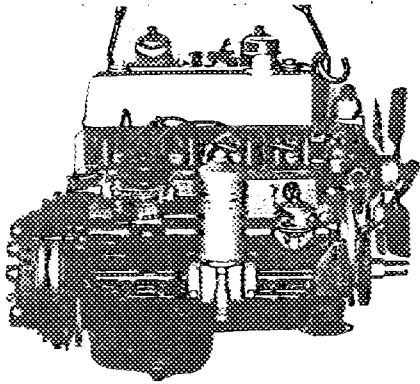


I. silencer - exhaust pipes after exhaust manifold.



Make ISUZU MOTORS LTD.

Engine unit out of car, from right. With clutch and

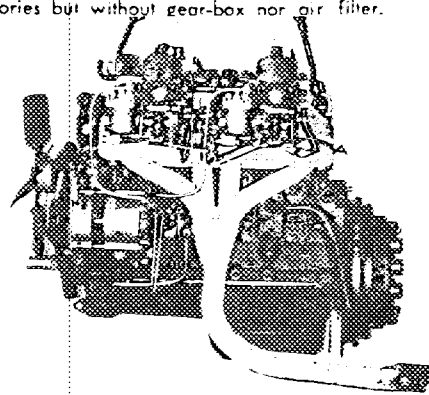


Model ISUZU R20S

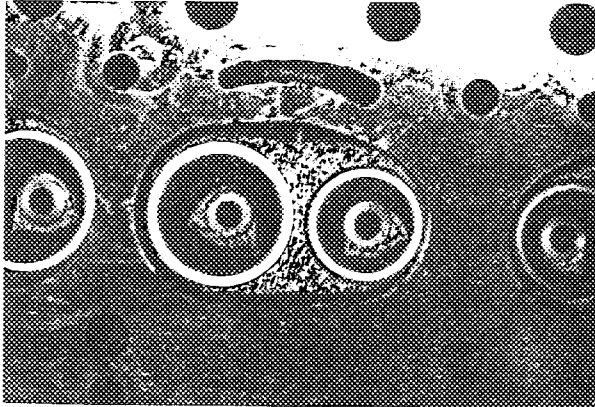
F. I. A. Rec. No

Photograph

Engine unit out of car, from left. With clutch and accessories but without gear-box nor air filter.



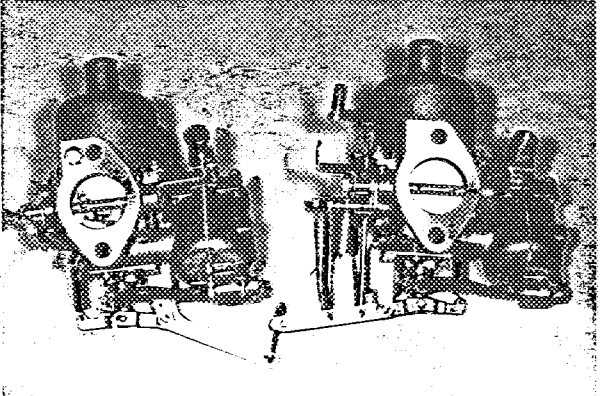
L. combustion chamber



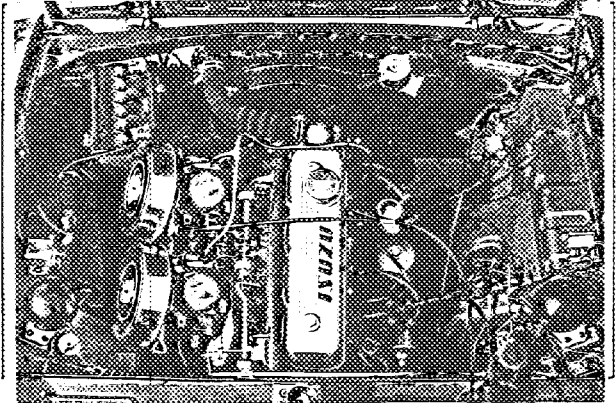
M. piston crown



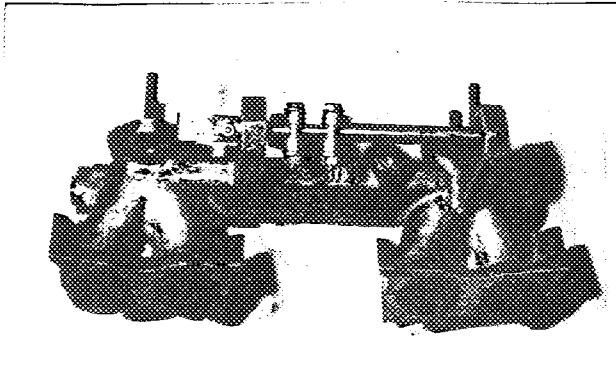
N. Carburettor (view from side of manifold)



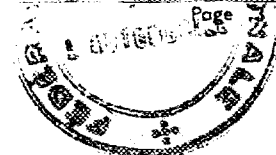
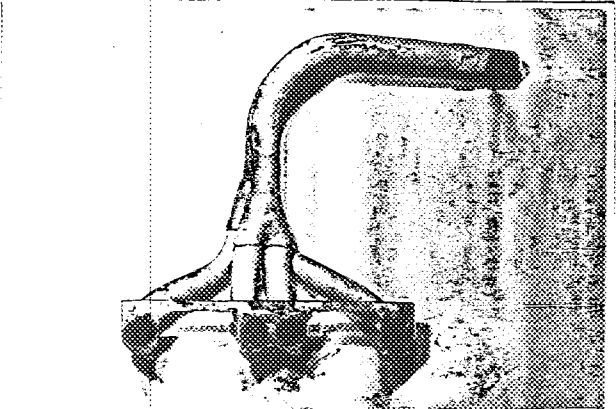
O. engine in car with all accessories, bonnet open or removed.



P. inlet manifold



Q. exhaust manifold

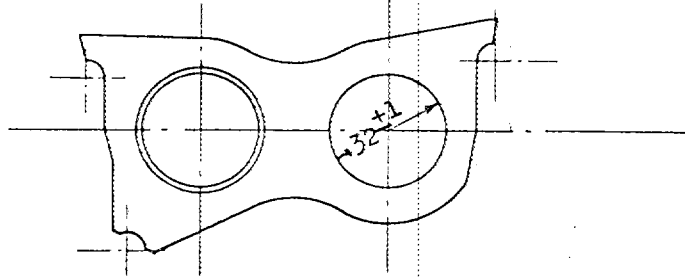


Make ISUZU MOTORS LTD.

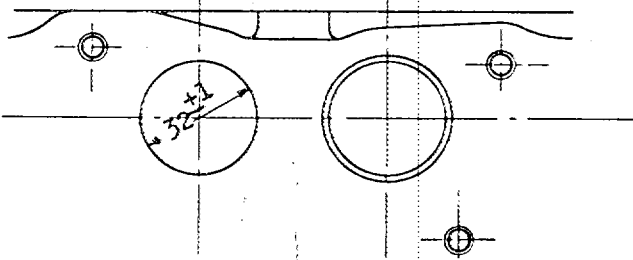
Model ISUZU PR20S

F. I. A. Rec. No

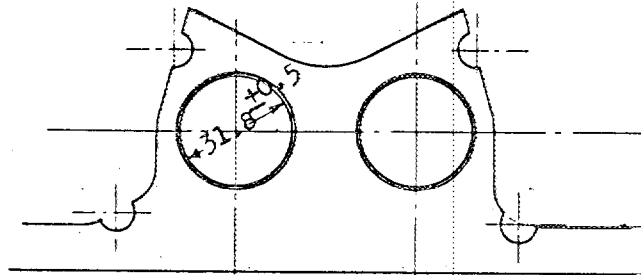
Drawing inlet manifold ports, side of cylinder-head. Indicate scale or dimensions and manufacturing tolerance.



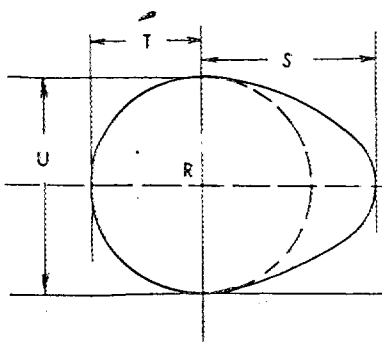
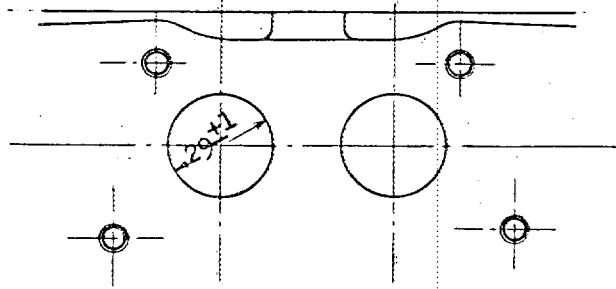
Drawing of entrance to inlet port of cylinder-head. Indicate scale or dimensions and manufacturing tolerance.



Drawing exhaust manifold ports, side of cylinder-head. Indicate scale or dimensions and manufacturing tolerance.



Drawing of exit to exhaust port of cylinderhead. Indicate scale or dimensions and manufacturing tolerance.



R = centre of camshaft.

Inlet cam

S = 21.5

mm 0.85 inches

T = 14.6

mm 0.58 inches

U = 29.3

mm 1.15 inches

Exhaust cam

S = 21.5

mm 0.85 inches

T = 14.6

mm 0.58 inches

U = 29.3

mm 1.15 inches



Make ISUZU MOTORS LTD.

Model ISUZU PR20S

F. I. A. Rec. No.

IMPORTANT - the underlined items must be stated in two measuring systems, one of which must be the metric system. See conversion table hereafter.

CAPACITIES AND DIMENSIONS

1. <u>Wheelbase</u>	2,350	mm	92.5	inches
2. <u>Front track</u>	1,220	mm	48.0	inches *
3. <u>Rear track</u>	1,195	mm	47.0	inches *
4. Overall length of the car			397.5	cm inches
5. Overall width of the car			149.5	cm inches
6. Overall height of the car			139.0	cm inches
7. <u>Capacity of fuel tank</u> (reserve included)				40 ltrs Gallon Imp.
	10.5	Gallon US		
8. Seating capacity	5			
9. <u>Weight</u> , total weight of the car with normal equipment, water, oil and spare wheel but without fuel nor repair tools:	900	kg	1,990	lbs cwt

*: Differences in track caused by the use of other wheels with different rim widths must be stated when recognition is requested for the wheels concerned.

Specify ground clearance in relation to the track and give drawing of two easily recognizable points at front and rear at which measurements are taken.

These ground clearance dimensions are only for information when checking the track and can in no way affect the eligibility of the car.

CONVERSION TABLE

1 inch/pouce	— 2.54 cm	1 quart US	— 0.9464 ltrs
1 foot/pied	— 30.4794 cm	1 pint (pt)	— 0.568 ltrs
1 square inch/pouce carré	— 6.452 cm ²	1 gallon Imp.	— 4.546 ltrs
1 cubic inch/pouce cube	— 16.387 cm ³	1 gallon - US	— 3.785 ltrs
1 pound/livre (lb)	— 453.593 gr.	1 hundred weight (cwt)	— 907.185 kg



Make ISUZU MOTORS LTD.

Model ISUZU PR20S

F.I.A. Rec. No.

CHASSIS AND COACHWORK (Photographs A, B and C)

20. Chassis/body construction : ~~XXXXXX~~ / unitary construction
21. Unitary construction, material (s) **STEEL, CAST IRON, ALUMINUM**
Separate construction
22. Material (s) of chassis
23. Material (s) of coachwork
24. Number of doors **4** Material (s) **STEEL**
25. Material (s) of bonnet **STEEL**
26. Material (s) of boot lid **STEEL**
27. Material (s) of rear-window **GLASS**
28. Material (s) of windscreen **GLASS**
29. Material (s) of front-door windows **GLASS**
30. Material (s) of rear-door windows **GLASS**
31. Sliding system of door windows **VERTICAL, MANUAL**
32. Material (s) of rear-quarter light **GLASS**

ACCESSORIES AND UPHOLSTERY

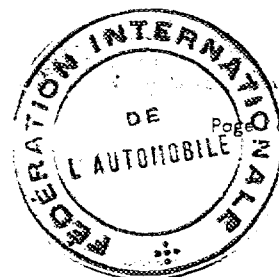
38. Interior heating : ~~XXXX~~ - no
39. Air-conditioning : ~~XXXX~~ - no
40. Ventilation : yes - ~~XXXX~~
41. Front seats, type of seats and upholstery **SEPARATE SEAT & VINYL LEATHER OR BENCHSEAT**
42. Weight of front seat (s), complete with supports and rails, out of the car :
13 x 2 kg lbs
43. Rear seats, type of seats and upholstery **BENCH SEAT & VINYL LEATHER**
44. Front bumper, material (s) **STEEL** Weight **5** kg lbs
45. Rear bumper, material (s) **STEEL** Weight **6** kg lbs

WHEELS

50. Type **PRESSED STEEL**
51. Weight (per wheel, without tyre) **7.2** kg lbs
52. Method of attachment **4 HUB-BOLTS & NUTS**
53. Rim diameter **329** mm **13** inches
54. Rim width **127 or 114** mm **5 or 4.5** inches

STEERING

60. Type **RACK AND PINION**
61. Servo-assistance : ~~XXXX~~ - no
62. Number of turns of steering wheel from lock to lock **2.9**
63. In case of servo-assistance



Make ISUZU MOTORS LTD.

Model ISUZU PR20S

F. I. A. Rec. No.

SUSPENSION

- 70. Front suspension (photogr. D), type
- 71. Type of spring
- 72. Stabiliser (if fitted)
- 73. Number of shockabsorbers 2.
- 78. Rear suspension (photogr. E), type
- 79. Type of spring
- 80. Stabiliser (if fitted)
- 81. Number of shockabsorbers 2

INDEPENDENT, COIL SPRING, WISHBONE

COIL

TORSION BAR

- 74. Type HYDRAULIC, TELESCOPIC
- INDEPENDENT, DIAGONAL LINK
- COIL AND TRANSVERSE LEAF

- 82. Type HYDRAULIC, TELESCOPIC

BRAKES (photographs F and G)

- 90. Method of operation
- 91. Servo-assistance (if fitted), type
- 92. Number of hydraulic master cylinders

HYDRAULIC

1.

- 93. Number of cylinders per wheel

FRONT

1.

REAR

1.

- 94. Bore of wheel cylinder (s)

19.05 mm

in.

22.2

mm

in.

Drum brakes

- 95. Inside diameter
- 96. Length of brake linings
- 97. Width of brake linings
- 98. Number of shoes per brake
- 99. Total area per brake

203.2 mm

in.

203.2

mm

in.

168 & 195 mm

in.

195

mm

in.

37.1 mm

in.

&195
37.1

mm

in.

2.

2.

- 99. Total area per brake

13,450 mm²

sq. in.

14,430

mm²

sq. in.

Disc brakes

- 100. Outside diameter
- 101. Thickness of disc
- 102. Length of brake linings
- 103. Width of brake linings
- 104. Number of pads per brake
- 105. Total area per brake

mm

in.

mm

in.

mm

in.

mm

in.

mm

in.

mm

in.

mm

in.

mm

in.

mm²

sq. in.

mm²

sq. in.



Make ISUZU MOTORS LTD.

Model ISUZU PR20S

F. I. A. Rec. No.

ENGINE (photographs J and K)

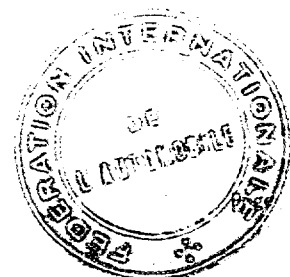
- 130. Cycle 4
- 131. Number of cylinders 4
- 132. Cylinder arrangement **INLINE**
- 133. Bore 79 mm 3.11 in. 134. Stroke 75 mm 2.95 in.
- 135. Capacity per cylinder 368 cm³ 22.4 cu. in.
- 136. Total cylinder-capacity 1471 cm³ 89.8 cu. in.
- 137. Material (s) of cylinder block **CAST IRON**
- 138. Material (s) of sleeves (if fitted)
- 139. Cylinder-head, material (s) **CAST IRON** Number fitted 1.
- 140. Number of inlet ports 4.
- 141. Number of exhaust ports 4.
- 142. Compression ratio 8.5
- 143. Volume of one combustion chamber 49 cm³ cu. in.
- 144. Piston, material **AL-ALLOY** 145. Number of rings 3.
- 146. Distance from gudgeon pin centre line to highest point of piston crown 37.4 mm inches
- 147. Crankshaft : ~~stamped~~ / stamped 148. Type of crankshaft : integral /
- 149. Number of crankshaft main bearings 3 SET.
- 150. Material of bearing cap **CAST IRON**
- 151. System of lubrication : ~~oil in sump~~ / oil in sump
- 152. Capacity, lubricant 3.2 ltrs pts quarts US
- 153. Oil cooler : ~~yes~~ / no 154. Method of engine cooling **WATER COOLING**
- 155. Capacity of cooling system 5.8 ltrs pints quarts US
- 156. Cooling fan (if fitted), dia. 32 cm inches
- 157. Number of blades of cooling fan 4

Bearings

- 158. Crankshaft main, type **PLAIN, TWO HALVES** Dia. 56 mm in.
- 159. Connecting rod big end, **PLAIN, TWO HALVES** Dia. 49 mm in.

Weights

- 160. Flywheel (clean) 10.5 kg lbs
- 161. Flywheel with clutch (all turning parts) 16.8 kg lbs
- 162. Crankshaft 15.3 kg lbs
- 163. Connecting rod 0.66 kg lbs
- 164. Piston with rings and pin 0.49 kg lbs



Make ISUZU MOTORS LTD.

Model ISUZU PR20S

F. I. A. Rec. No.

FOUR STROKE ENGINES

170. Number of camshafts **1** 171. Location **CYL. BLOCK**
172. Type of camshaft drive **CHAIN**
173. Type of valve operation **PUSH ROD**

INLET (see page 4) *

180. Material(s) of inlet manifold **AL-CAST**
181. Diameter of valves **38** mm **1.50** inches
182. Max. valve lift **9.3** mm **0.37** in. 183. Number of valve springs **2**
184. Type of spring **COIL** 185. Number of valves per cylinder **1**
186. Tappet clearance for checking timing (cold) **0.3** mm inches
187. Valves open at (with tolerance for tappet clearance indicated) **38° B.T.D.C ± 3°**
188. Valves close at (with tolerance for tappet clearance indicated) **82° A.B.D.C ± 3°**
189. Air filter, type **PAPER**

EXHAUST (see page 4)

195. Material (s) of exhaust manifold **STEEL**
196. Diameter of valves **30** mm **1.18** inches
197. Max. valve lift **9.3** mm **0.37** in. 198. Number of valve springs **2**
199. Type of spring **COIL** 200. Number of valves per cylinder **1**
201. Tappet clearance for checking timing (cold) **0.35** mm inches
202. Valves open at (with tolerance for tappet clearance indicated) **73° B.B.D.C ± 3°**
203. Valves close at (with tolerance for tappet clearance indicated) **35° A.T.D.C ± 3°**

CARBURETION (photograph N)

210. Number of carburetors fitted **2** 211. Type **SEMI SIDE DRAFT (S.U. TYPE)**
212. Make **HITACHI** 213. Model **HJD 38W**
214. Number of mixture passages per carburetor **1**
215. Flange hold diameter of exit port(s) of carburetor **38** mm in.
216. ~~Minimum diameter of exit port(s)~~ / minimum diam. with piston at maximum height **36** mm inches

INJECTION (if fitted)

220. Make of pump 221. Number of plungers
222. Model or type of pump 223. Total number of injectors
224. Location of injectors
225. Minimum diameter of inlet pipe mm inches

*) for additional information concerning two-stroke engines and super-charged engines see page 13.



Make ISUZU MOTORS LTD.

Model ISUZU PR20S

F.I.A. Rec. No.

ENGINE ACCESSORIES

230. Fuel pump : mechanical and / electrical	231. No. fitted	1
232. Type of ignition system MAKE & BREAK IGNITION	233. No. of distributors	1
234. No. of ignition coils	235. No. of spark plugs per cylinder	1
236. Generator, type: dynamo/alternator-number fitted	237. Method of drive	V BELT
238. Voltage of generator	239. Battery, number	1
240. Location		ENGINE ROOM
241. Voltage of battery		12 volts

ENGINE AND CAR PERFORMANCES (as declared by manufacturer in catalogue)

250. Max. engine output	77 PS, (type of horsepower: JIS) at	5400 rpm
251. Maximum rpm	5400 output at that figure	77PS
252. Maximum torque	12kg-m at	4200 rpm
253. Maximum speed of the car	150 km/hour	miles / hour



Make ISUZU MOTORS LT.

Model ISUZU PR20S

F. I. A. Rec. No.

DRIVE TRAIN

CLUTCH

260. Type of clutch **DRY PLATE** 261. No. of plates **1.**
 262. Dia. of clutch plates **20.3** cm inches
 263. Dia. of linings, inside **14.6** cm in. outside **20.3** cm in.
 264. Method of operating clutch **MECHANICAL**

GEAR BOX (photograph H)
Manual Type, make

270. ~~Manual type, make~~ **ISUZU MOTORS LTD.**
 271. No. of gear-box ratios forward **4.** 272. Synchronized forward ratios **3. FORWARD 2,3,4**
 273. Location of gear-shift **FLOOR, STEERING COLUMN**
 274. Automatic, make type
 275. No. of forward ratios 276. location of gear-shift

277.	Manual		Automatic		manual			
	Ratio	No. teeth	Ratio	No. teeth	Ratio	No. teeth	Ratio	No. teeth
1	3.746	$\frac{29 \times 31}{20 \times 12}$			3.444	$\frac{28 \times 31}{21 \times 12}$		
2	2.320	$\frac{29 \times 32}{20 \times 20}$			2.133	$\frac{28 \times 32}{21 \times 20}$		
3	1.508	$\frac{29 \times 26}{20 \times 25}$			1.387	$\frac{28 \times 26}{21 \times 25}$		
4	1.000				1.000			
5								
6								
reverse	4.994	$\frac{29 \times 20 \times 31}{20 \times 12 \times 15}$			4.593	$\frac{28 \times 20 \times 31}{20 \times 12 \times 15}$		

278. Overdrive, type
 279. Forward gears on which overdrive can be selected
 280. Overdrive ratio

FINAL DRIVE

290. Type of final drive **HYPOID**
 291. Type of differential **BEVEL GEAR**
 292. Type of limited slip differential (if fitted) **MECHANICAL**
 293. Final drive ratio **3.778** **4.111** **3.727**
 Number of teeth **34/9** **37/9** **41/11**



Make ISUZU MOTORS LTD.

Model ISUZU PR20S

F.I.A. Rec. No.

IMPORTANT: The conformity of the car with the following items of the present recognition form is to be disregarded during the scrutineering, when the vehicle has been entered in group 2 (Touring cars) or 3 (Grand Touring cars) : 41, 72, 80, 91, 142, 143, 144, 145, 146, 153, 156, 157, 160, 161, 162, 163, 164, 182, 184, 186, 187, 188, 189, 199, 201, 202, 203, 212, 213, 215, 216, 222, 225, 230, 250, 251, 252, 253, and photographs I, M and N.

During the scrutineering of cars entered in group 4 (Sportscars) only the following items of the present recognition form are to be taken into consideration : 1, 2, 3, 9, 20, 21, 22, 23, 24, 25, 26, 70, 71, 76, 79, 90, 130, 131, 132, 133, 134, 135, 136, 137, 138, 139, 140, 141, 147, 148, 149, 150, 158, 159, 170, 171, 172, 173, 185, 200, 270, 271, 274, 275, 290, 291, 292 and photographs A, B, D, E, F, G, H, J, K, and O.

Optional equipment affecting preceding information. This to be stated together with reference number.

WHEELS

50. TYPE	PRESSED STEEL
51. WEIGHT	6.5 kg
52. METHOD OF ATTACHMENT	4 HUB-BOLTS & NUTS
53. <u>RIM DIAMETER</u>	356 mm 14 inches
54. <u>RIM WIDTH</u>	102 mm 4 inches



Make ISUZU MOTORS LTD.

Model ISUZU PR20S

F.I.A. Rec. No.

TWO STROKE ENGINES

- | | | | | | |
|--|----|--------|---------------------------|-----------------|---------|
| 300. System of cylinder scavenging | | | | | |
| 301. Type of lubrication | | | | | |
| 302. Inlet ports, length measured around cylinder wall | | | | mm | inches |
| 303. Height inlet port | mm | in. | 304. Area | mm ² | sq. in. |
| 305. Exhaust ports, length measured around cylinder wall | | | | mm | inches |
| 306. Height exhaust port | mm | in. | 307. Area | mm ² | sq. in. |
| 308. Transfer port, length measured around cylinder wall | | | | mm | inches |
| 309. Height transfer port | mm | in. | 310. Area | mm ² | sq. in. |
| 311. Piston ports, length measured around piston | | | | mm | inches |
| 312. Height piston port | mm | in. | 313. Area | mm ² | sq. in. |
| 314. Method of precompression | | | 315. Precompression cyl.: | yes/no | |
| 316. Bore | mm | inches | 317. Stroke | mm | inches |
| 318. Distance from top of cyl. block to highest point of exhaust port : | | | | mm | inches |
| 319. Distance from top of cyl. block to lowest point of inlet port : | | | | mm | inches |
| 320. Distance from top of cyl. block to highest point of transfer port : | | | | mm | inches |
| 321. <u>Drawing of cylinder ports.</u> | | | | | |

330. Supercharging—state full details hereafter :

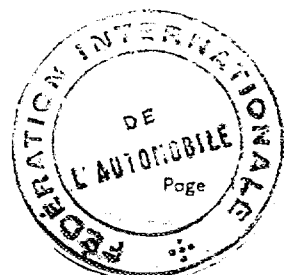
JAPAN AUTOMOBILE FEDERATION

Chairman

of Technical Subcommission

Handwritten signature: 江原 啓

Osama Hira o





JAPAN AUTOMOBILE FEDERATION F.I.A. Homol. No

1427 1/ET

FEDERATION INTERNATIONALE DE L'AUTOMOBILE

Amendment to Form of Recognition in accordance with the International Sporting Code.

Make ISUZU MOTORS LIMITED

Model ISUZU PR20S (BELLETT,S)

Modification's application starts with serial No.

chassis engine

PR20S-4057261 G150D -356715

Application of this amendment started the

Commercial denomination after application of modifications

The modifications are to be considered as: ~~normal~~ / normal evolution of the type

Date amendment is valid from 1st Nov '66 List 15/7

Description of amendment Original P.I.A. Recognition No.1427



Photograph A.

3/4 View of Car from front

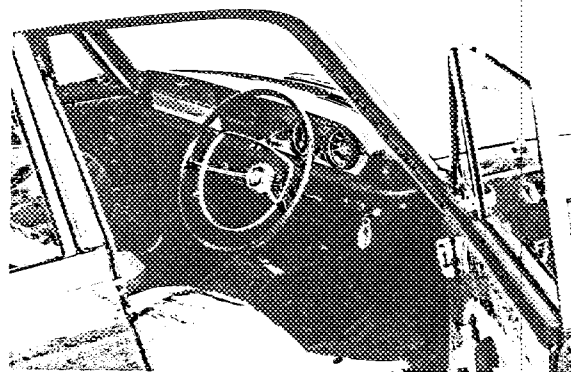
o Radiator grille Assy.

Photograph B.

3/4 View of Car from rear

o Tail & Stop lamp Assy.

o Rr No.plate lamp Assy.



Photograph C.

interior view of car through driver's door

o Facia

Stamp and signature of National Sporting Authority

JAPAN AUTOMOBILE FEDERATION

Chairman

of Technical Sub-commission

Osamu Hirao

Osamu Hirao

Stamp and signature of F.I.A.

