



JAPAN AUTOMOBILE FEDERATION

F. I. A. Recognition No. **1474**
Group **2 - Tourisme**

FEDERATION INTERNATIONALE DE L'AUTOMOBILE

Form of recognition in accordance with
Appendix J to the International Sporting Code.

Manufacturer **Isuzu Motors Limited**

Serial No of chassis **PR 20 - 4068750**

engine **G 150D - 356847**

Recognition is valid from **1st April 1967**

The manufacturing of the model described in this recognition form was started on **Aug., 19'66** and the minimum production of **1,000** identical cars, in accordance with the specifications of this form was reached on **Feb., 19'67**

Cylinder-capacity **1471 cm³ 89.77 cu. in.**

Model **Isuzu PR 20S (Bellett 1500 Sport)'67**

Manufacturer **Isuzu Motors Limited**

Manufacturer **Isuzu Motors Limited**

List **16/1**

Photograph A, 3/4 view of car from front



The vehicle described in this form has been subject to the following amendments

Variants

on	19	rec. No.	List
on	19	rec. No.	List
on	19	rec. No.	List
on	19	rec. No.	List
on	19	rec. No.	List

Normal evolution of the type

on	19	rec. No.	List
on	19	rec. No.	List
on	19	rec. No.	List
on	19	rec. No.	List
on	19	rec. No.	List

Stamp and signature of the
National Sporting Authority

Stamp and signature of the F. I. A.

[Handwritten signature]
FEDERATION INTERNATIONALE DE L'AUTOMOBILE

Make **Isuzu Motors Limited**

Model.

Isuzu PR 20S '67

F. I. A. Rec. No.

IMPORTANT - the underlined items must be stated in two measuring systems, one of which must be the metric system. See conversion table hereafter.

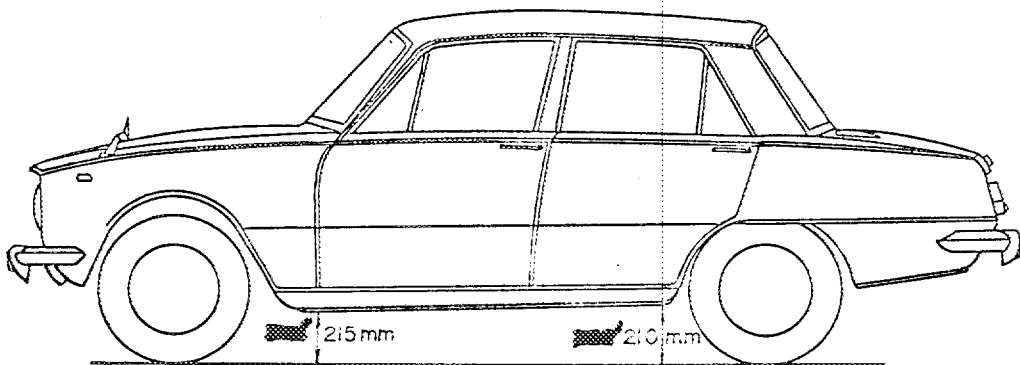
CAPACITIES AND DIMENSIONS

1. <u>Wheelbase</u>	2350	mm	92.52	inches
2. <u>Front track</u>	1245	mm	49.02	inches *
3. <u>Rear track</u>	1195	mm	47.05	inches *
4. Overall length of the car	403.0	cm		inches
5. Overall width of the car	149.5	cm		inches
6. Overall height of the car	139.0	cm		inches
7. <u>Capacity of fuel tank</u> (reserve included)			40	liters
	10.5	Gallon US		Gallon Imp.
8. Seating capacity	5	Seaters		
9. <u>Weight</u> , total weight of the car with normal equipment, water, oil and spare wheel but without fuel nor repair tools:				
	910	kg	2,010	lbs
				cwt

* Differences in track caused by the use of other wheels with different rim widths must be stated when recognition is requested for the wheels concerned.

Specify ground clearance in relation to the track and give drawing of two fixed points of the vehicle's structure at which measurements are taken.

These ground clearance dimensions are only for information when checking the track and can in no way affect the eligibility of the car.



CONVERSION TABLE

1 inch / pouce	--	2.54 cm	1 quart US	--	0.9464 ltrs
1 foot / pied	--	30.4794 cm	1 pint (pt)	--	0.568 ltrs
1 square inch / pouce carré	--	6.452 cm ²	1 gallon imp.	--	4.546 ltrs
1 cubic inch / pouce cube	--	16.387 cm ³	1 gallon US	--	3.785 ltrs
1 pound / livre (lb)	--	453.593 gr.	1 hundred weight (cwt)	--	50.802 kg

Make Isuzu Motors Limited

Model Isuzu PR 20S '67

F.I.A. Rec. No.

CHASSIS AND COACHWORK (Photographs A, B and C)

20. Chassis/body construction : ~~separate~~ / unitary construction
21. Unitary construction, material (s) ~~Steel, Cast Iron, Aluminum~~
Separate construction
22. ~~Separate~~ Constructions: Material (s) of chassis
23. Material (s) of coachwork
24. Number of doors 4 Material (s) ~~Steel, 4 Doors~~ Steel
25. Material (s) of bonnet Steel
26. Material (s) of boot lid Steel
27. Material (s) of rear-window Glass
28. Material (s) of windscreen Glass
29. Material (s) of front-door windows Glass
30. Material (s) of rear-door windows Glass
31. Sliding system of door windows Vertical, Manual
32. Material (s) of rear-quarter light

ACCESSORIES AND UPHOLSTERY

38. Interior heating : ~~///~~ - no
39. Air-conditioning : ~~///~~ - no
40. Ventilation : yes - ~~///~~
41. Front seats, type of seats and upholstery Bucket, Textiles & vinyl
42. Weight of front seat (s), complete with supports and rails, out of the car
2 x 12.7 kg lbs
43. Rear seats, type of seats and upholstery Bench, Textiles & vinyl
44. Front bumper, material (s) Steel Weight 6 kg lbs
45. Rear bumper, material (s) Steel Weight 6 kg lbs

WHEELS

50. Type Pressed Steel
51. Weight (per wheel, without tyre) 4.5" Rim 6.0 kg
5.0" Rim 7.2 lbs
52. Method of attachment 4 Wheel pins and Nuts
53. Rim diameter 330.2 mm 13.0 inches
54. Rim width 114 or 127 mm 4.5 or 5.0 inches

STEERING

60. Type Rack and Pinion
61. Servo-assistance : ~~///~~ - no
62. Number of turns of steering wheel from lock to lock 2.9
63. In case of servo-assistance

Make Isuzu Motors Limited

Model

Isuzu PR 20S '67

F. I. A. Rec. No.

SUSPENSION

70. Front suspension (photogr. D), type Independent, Coil Spring, Wishbone type
71. Type of spring Coil
72. Stabiliser (if fitted) Torsion bar
73. Number of shockabsorbers 2 74. Type Hydraulic Telescopic
78. Rear suspension (photogr. E), type Independent, Diagonal Link
79. Type of spring Coil and Transverse Leaf
80. Stabiliser (if fitted)
81. Number of shockabsorbers 2 82. Type Hydraulic Telescopic

BRAKES (photographs F and G)

90. System Hydraulic
91. Servo-assistance (if fitted), type
92. Number of hydraulic master cylinders 1

	FRONT		REAR	
93. Number of cylinders per wheel	2		1	
94. Bore of wheel cylinder (s)	57.2 mm	in.	22.2 mm	in.
Drum brakes				
95. Inside diameter		mm	203.2 mm	in.
96. Length of brake linings		mm	195.0 mm	in.
97. Width of brake linings		mm	37.1 mm	in.
98. Number of shoes per brake			2	
99. Total area per brake		mm ²	sq. in. 14,430	mm ² sq. in.
Disc brakes				
100. Outside diameter	237 mm	in.	mm	in.
101. Thickness of disc	10 mm	in.	mm	in.
102. Length of brake linings	60 mm	in.	mm	in.
103. Width of brake linings	45 mm	in.	mm	in.
104. Number of pads per brake	2			
105. Total area per brake	5,400 mm ²	sq. in.	mm ²	sq. in.

Make Isuzu Motors Limited

Model Isuzu PR 20S '67

F.I.A. Rec. No.

ENGINE (photographs J and K)

130. Cycle	4	131. Number of cylinders	4
132. Cylinder arrangement	In-line		
133. <u>Bore</u>	79 mm	134. <u>Stroke</u>	75 mm
	3.110 in.		2.953 in.
135. <u>Capacity per cylinder</u>	367.6		22.43 cu. in.
	cm ³		
136. <u>Total cylinder-capacity</u>	1471		89.74 cu. in.
	cm ³		
137. Material (s) of cylinder block	Cast Iron		
138. Material (s) of sleeves (if fitted)			
139. Cylinder-head, material (s)	Cast Iron	Number fitted	1
140. Number of inlet ports	4	141. Number of exhaust ports	4
142. Compression ratio	8.5 : 1		
143. Volume of one combustion chamber	49.0		cm ³ cu. in.
144. Piston, material	Aluminum	145. Number of rings	3
146. Distance from gudgeon pin centre line to highest point of piston crown			
	37.4 mm		inches
147. Crankshaft : forged / stamped		148. Type of crankshaft :	integral /
149. Number of crankshaft main bearings	5 set		
150. Material of bearing cap	Cast Iron		
151. System of lubrication : / oil in sump /			
152. Capacity, lubricant	3.2 ltrs		pts quarts US
153. Oil cooler : / / no		154. Method of engine cooling	Water
155. Capacity of cooling system	5.7 ltrs		pts quarts US
156. Cooling fan (if fitted), dia.	32 cm		inches
157. Number of blades of cooling fan	4		

Bearings

158. Crankshaft main, type	Plain	Dia.	56 mm	in.
159. Connecting rod big end,	Plain	Dia.	49 mm	in.

Weights

160. Flywheel (clean)	10.4 kg	lbs		
161. Flywheel with clutch (all turning parts)			16.5 kg	lbs
162. Crankshaft	15.3 kg	lbs	163. Connecting rod	0.56 kg
164. Piston with rings and pin	0.46 kg	lbs		

Make Isuzu Motors Limited

Model Isuzu PR 20S '67

F. I. A. Rec. No.

FOUR STROKE ENGINES

170. Number of camshafts 1 171. Location Cylinder Block
172. Type of camshaft drive Chain Drive
173. Type of valve operation Push Rod

INLET (see page 6) *

180. Material(s) of inlet manifold Alminum
181. Diameter of valves 38 mm 1.496 inches
182. Max. valve lift 8.95mm 0.352 in. 183. Number of valve springs 2
184. Type of spring Coil 185. Numbr of valves per cylinder 1
186. Tappet clearance for checking timing (cold) 0.25 mm inches
187. Valves open at (with tolerance for tappet clearance indicated) 15° BTDC ± 3°
188. Valves close at (with tolerance for tappet clearance indicated) 73° ATDC ± 3°
189. Air filter, type

EXHAUST (see page 6)

195. Material (s) of exhaust manifold Steel
196. Diameter of valves 30 mm 1.181 inches
197. Max. valve lift 8.95 mm 0.352 in. 198. Number of valve springs 2
199. Type of spring Coil 200. Number of valves per cylinder 1
201. Tappet clearance for checking timing (cold) 0.35 mm inches
202. Valves open at (with tolerance for tappet clearance indicated) 55° BBDC ± 3°
203. Valves close at (with tolerance for tappet clearance indicated) 29° ATDC ± 3°

CARBURETION (photograph N)

210. Number of carburetors fitted 2 211. Type SU type
212. Make Hitachi 213. Model HJD 38W
214. Number of mixture passages per carburetor 1
215. Flange hole diameter of exit port(s) of carburettor 38 mm in.
216. Minimum dimensions of mixture pasage(s) with piston at max. height (example: SU) 29 mm inches

INJECTION (if fitted)

220. Make of pump 221. Number of plungers
222. Model or type of pump 223. Total number of injectors
224. Location of injectors
225. Minimum diameter of inlet pipe mm inches

*) for additional information concerning two-stroke engines and super-charged engines see page 13.

Make Isuzu Motors Limited

Model Isuzu PR 20S '67

F. I. A. Rec. No.

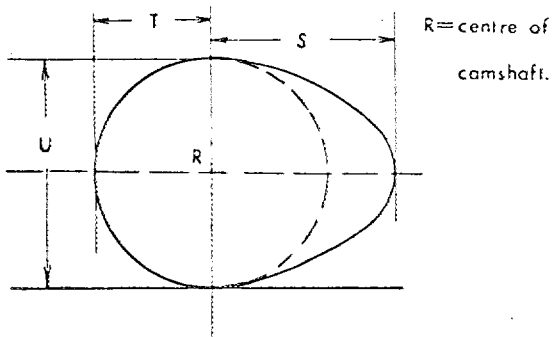
ENGINE ACCESSORIES

- 230. Fuel pump : mechanical ~~hydraulic~~
- 231. No. fitted 1
- 232. Type of ignition system Make and Break Ignition
- 233. No. of distributors 1
- 234. No. of ignition coils 1
- 235. No. of spark plugs per cylinder 1
- 236. Generator, type ~~alternator~~/alternator-number fitted 1
- 237. Method of drive V belt drive
- 238. Voltage of generator 12 volts
- 239. Battery, number 1
- 240. Location Engine Room
- 241. Voltage of battery 12 volts

ENGINE AND CAR PERFORMANCES (as declared by manufacturer in catalogue)

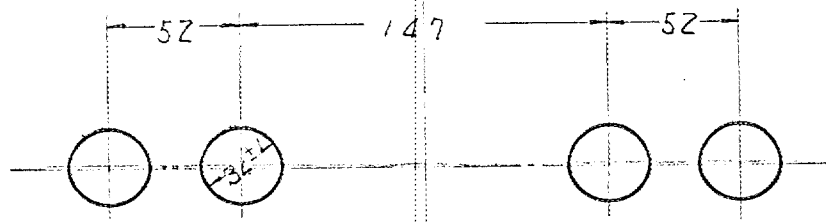
- 250. Max. engine output 77 PS (type of horsepower: JIS) at 5,400 rpm
- 251. Maximum rpm 5,400 output at that figure 77 PS
- 252. Maximum torque 12.0Kg-m at 4,200 rpm
- 253. Maximum speed of the car 150 km/hour miles / hour

255.

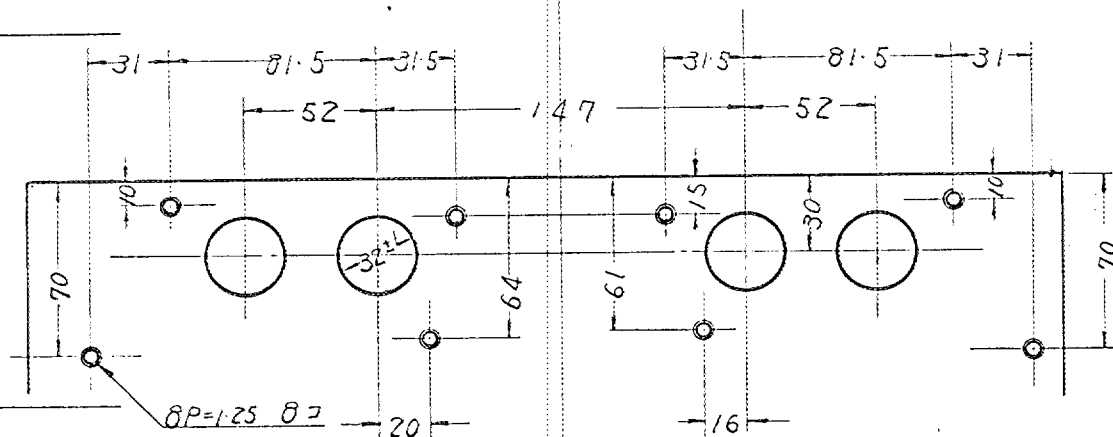


Inlet cam	
S =	22.2 mm 0.876 inches
T =	15.8 mm 0.622 inches
U =	31.6 mm 1.245 inches
Exhaust cam	
S =	22.3 mm 0.878 inches
T =	15.8 mm 0.622 inches
U =	31.7 mm 1.248 inches

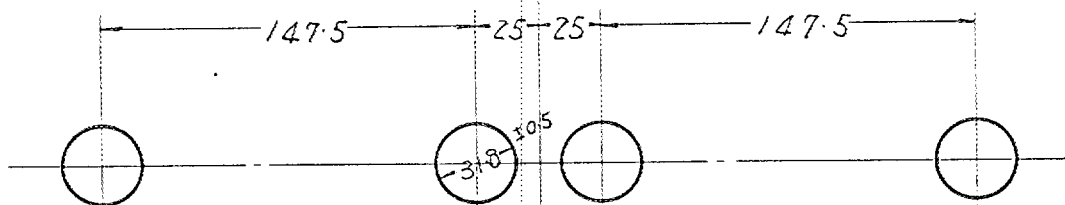
Drawing inlet manifold ports, side of cylinder-head. Indicate scale or dimensions and manufacturing tolerance.



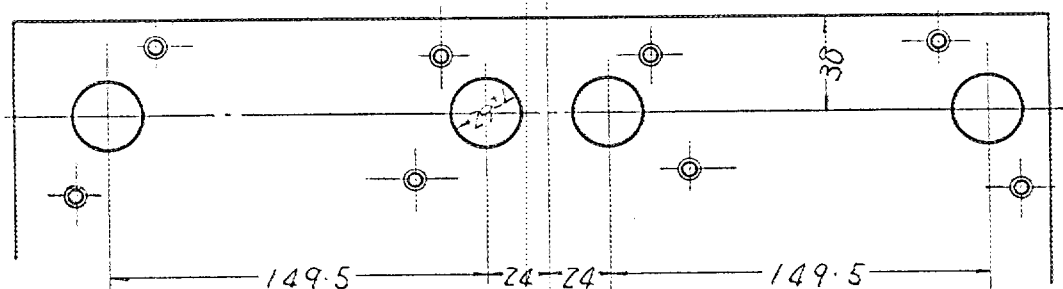
Drawing of entrance to inlet port of cylinder-head. Indicate scale or dimensions and manufacturing tolerance.



Drawing exhaust manifold ports, side of cylinder-head. Indicate scale or dimensions and manufacturing tolerance.



Drawing of exit to exhaust port of cylinderhead. Indicate scale or dimensions and manufacturing tolerance.



unit ; mm

Make Isuzu Motors Limited

Model Isuzu PR 20S '67

F.I.A. Rec. No.

DRIVE TRAIN

CLUTCH

260. Type of clutch Dry Plate 261. No. of plates 1
 262. Dia. of clutch plates 20.3 cm inches
 263. Dia. of linings, inside 14.6 cm in. outside 20.3 cm in.
 264. Method of operating clutch Mechanical

GEAR BOX photograph H)

270. Manual type, make Isuzu Method of operation Mechanical
 271. No. of gear-box ratios forward 4 272. Synchronized forward ratios 4 (1, 2, 3, 4)
 273. Location of gear-shift Floor
 274. Automatic, make type
 275. No. of forward ratios 276. Location of gear-shift

277.	Manual		Automatic			Alternative manual/automatic			
	Ratio	No. teeth	Ratio	No. teeth	Ratio	No. teeth	Ratio	No. teeth	
1	3.507	$\frac{29}{18} \times \frac{37}{17}$			3.207	$\frac{28}{19} \times \frac{37}{17}$	2.487	$\frac{27}{20} \times \frac{35}{19}$	
2	2.175	$\frac{29}{18} \times \frac{27}{20}$			1.989	$\frac{28}{19} \times \frac{27}{20}$	1.671	$\frac{27}{20} \times \frac{26}{21}$	
3	1.418	$\frac{29}{18} \times \frac{22}{25}$			1.356	$\frac{28}{19} \times \frac{23}{25}$	1.242	$\frac{27}{20} \times \frac{23}{25}$	
4	1.000				1.000		1.000		
5									
6									
reverse	3.927	$\frac{29}{18} \times \frac{39}{16}$			3.592	$\frac{28}{19} \times \frac{39}{16}$	3.291	$\frac{27}{20} \times \frac{39}{16}$	

278. Overdrive, type
 279. Forward gears on which overdrive can be selected
 280. Overdrive ratio

FINAL DRIVE

290. Type of final drive Hypoid Bevel
 291. Type of differential Bevel
 292. Type of limited slip differential (if fitted) ~~Mechanical~~
 293. Final drive ratio 3.727 or 4.100 or 4.300 or 4.625
 Number of teeth 41/11 or 41/10 or 43/10 or 27/8

Make

Isuzu Motors Limited

Model

Isuzu PR 20S '67

F.I.A. Rec. No

IMPORTANT! The conformity of the car with the following items of the present recognition form is to be disregarded during the scrutineering, when the vehicle has been entered in group 2 (Touring cars) or 3 (Grand Touring cars) : 41, 72, 80, 91, 142, 143, 144, 145, 146, 153, 156, 157, 160, 161, 162, 163, 164, 182, 184, 186, 187, 188, 189, 199, 201, 202, 203, 212, 213, 215, 216, 222, 225, 230, 250, 251, 252, 253, and photographs I, M and N.

During the scrutineering of cars entered in group 4 (Sportscars) only the following items of the present recognition form are to be taken into consideration : 1, 2, 3, 9, 20, 21, 22, 23, 24, 25, 26, 70, 71, 78, 79, 90, 130, 131, 132, 133, 134, 135, 136, 137, 138, 139, 140, 141, 147, 148, 149, 150, 158, 159, 170, 171, 172, 173, 185, 200, 270, 271, 274, 275, 290, 291, 292 and photographs A, B, D, E, F, G, H, J, K, and O.

Optional equipment affecting preceding information. This to be stated together with reference number.

	CAPACITY		
7.	Capacity of fuel tank	90 ltrs	23.8 Gallon US
292.	FINAL DRIVE Type of limited slip differential		Friction

Make Isuzu Motors Limited

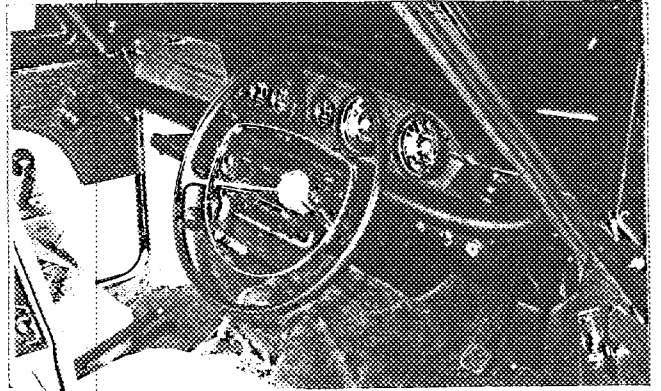
Model Isuzu PR 20S '67 F.I.A. Rec. No.

Photograph

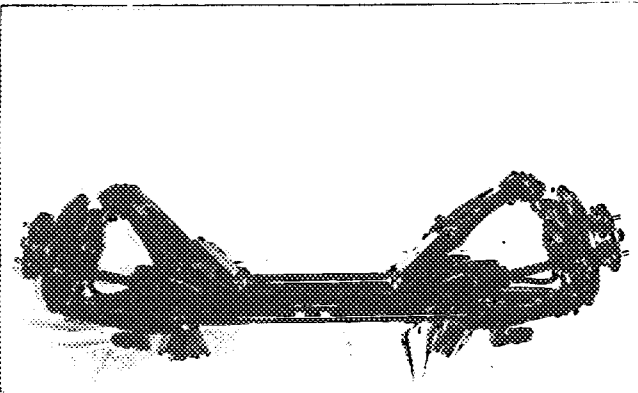
B, 3/4 view of car from rear



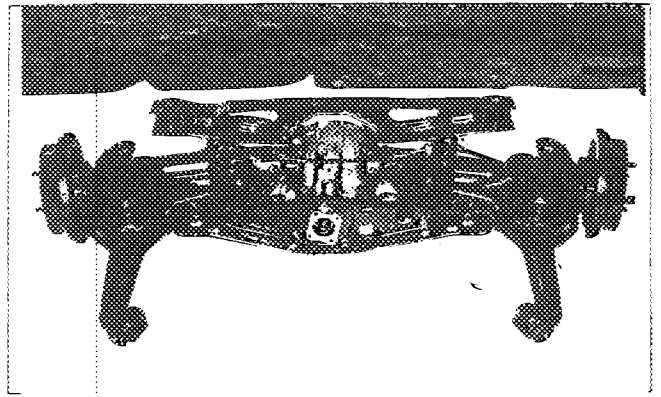
C, interior view of car through driver's door (open or removed) with dashboard



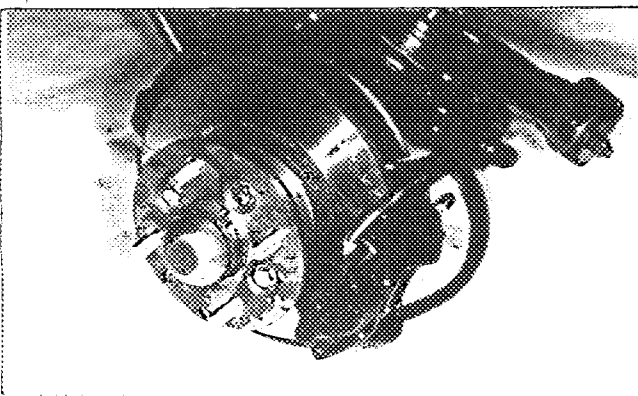
D, front axle complete, removed from car. Without wheels.



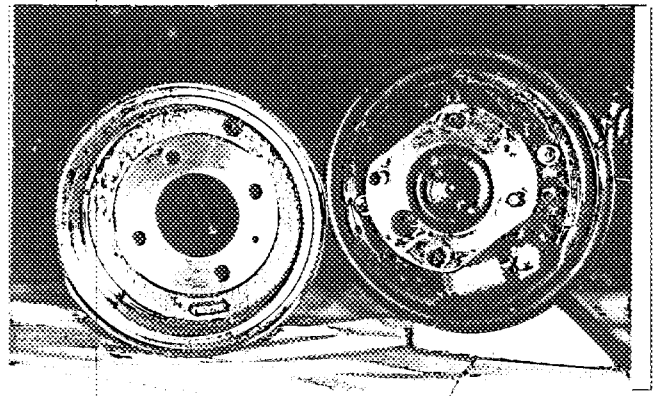
E, Rear axle complete without wheels, removed from car.



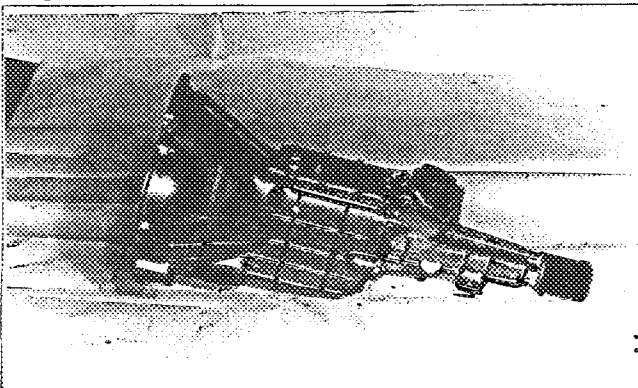
F, front brake, drum removed or disc with caliper(s)



G, rear brake, drum removed or disc with caliper(s)



H, gear-box, view from side



I, silencer + exhaust pipes after exhaust manifold.

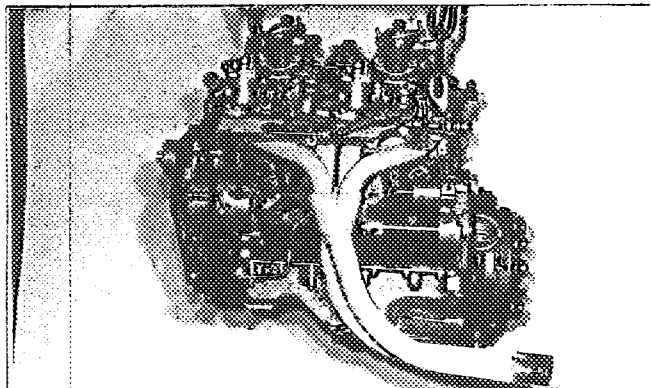
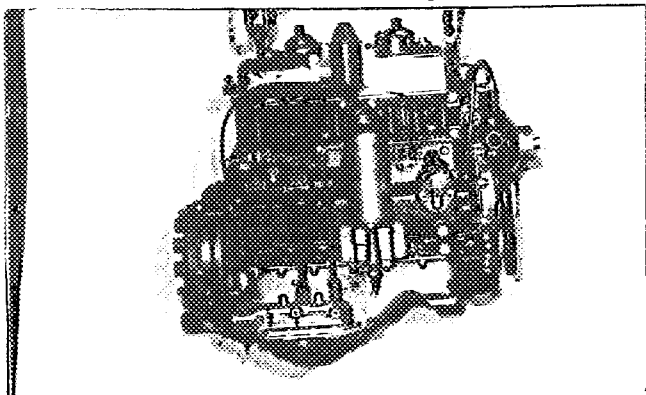


Make Isuzu Motors Limited

Model Isuzu PR 20S '67 F.I.A. Rec. No

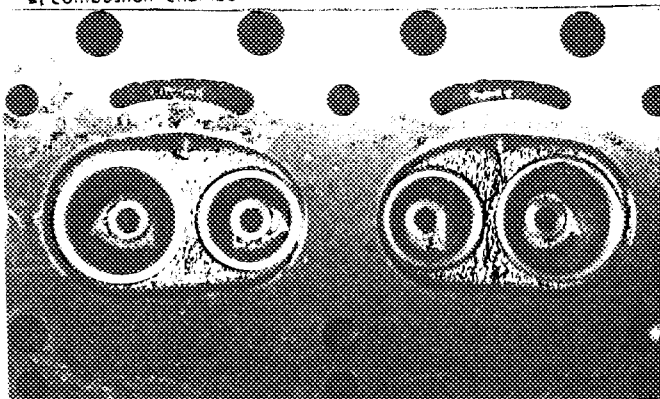
engine unit out of car, from right. With clutch and accessories but without air filter nor gear-box.

Photograph Engine unit out of car, from left. With clutch and accessories but without gear-box nor air filter.



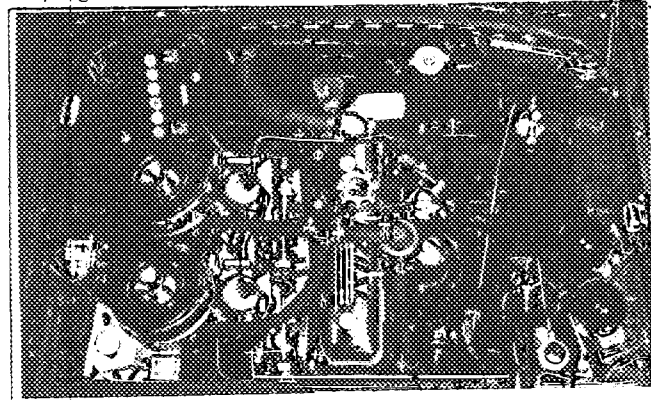
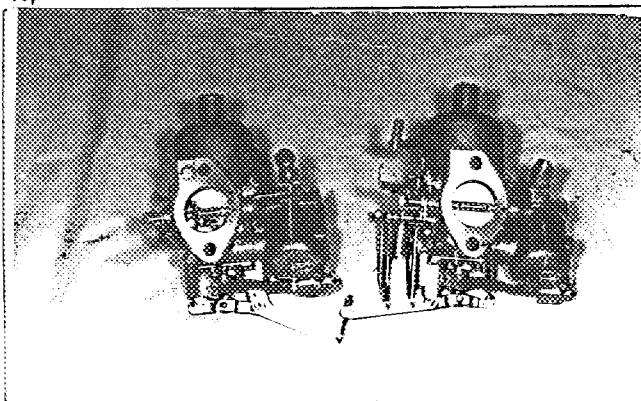
L, combustion chamber

M, piston crown



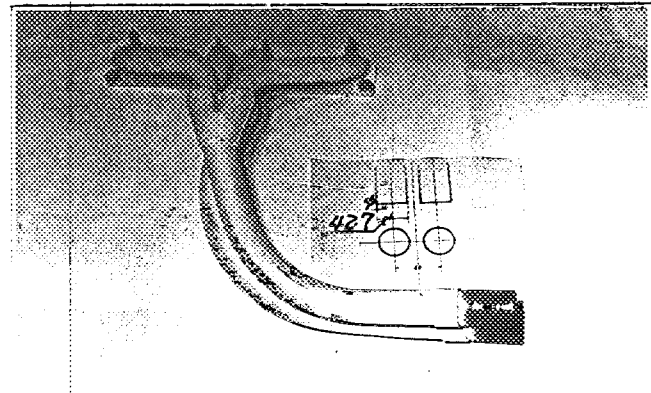
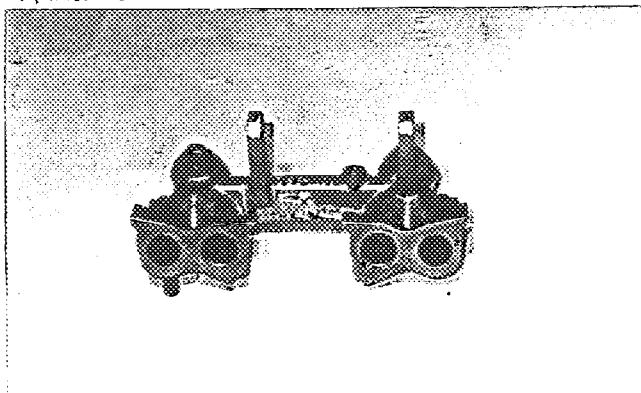
N, Carburettor (view from side of manifold)

O, engine in car with all accessories, bonnet open or removed.



P, inlet manifold

Q, exhaust manifold



Make Isuzu Motors Limited

Model

Isuzu PR 20S '67

F.I.A. Rec. No.

TWO STROKE ENGINES

300. System of cylinder scavenging					
301. Type of lubrication					
302. Inlet ports, length measured around cylinder wall				mm	inches
303. Height inlet port	mm	in.	304. Area	mm ²	sq. in.
305. Exhaust ports, length measured around cylinder wall				mm	inches
306. Height exhaust port	mm	in.	307. Area	mm ²	sq. in.
308. Transfer port, length measured around cylinder wall				mm	inches
309. Height transfer port	mm	in.	310. Area	mm ²	sq. in.
311. Piston ports, length measured around piston				mm	inches
312. Height piston port	mm	in.	313. Area	mm ²	sq. in.
314. Method of precompression			315. Precompression cyl.:	yes/no	
316. Bore	mm	inches	317. Stroke	mm	inches
318. Distance from top of cyl. block to highest point of exhaust port :				mm	inches
319. Distance from top of cyl. block to lowest point of inlet port :				mm	inches
320. Distance from top of cyl. block to highest point of transfer port :				mm	inches
321. <u>Drawing of cylinder ports.</u>					

330. Supercharging—state full details hereafter :

JAPAN AUTOMOBILE FEDERATION

難波清治

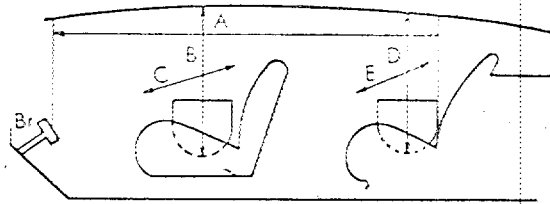
Y a s u h a r u N a n b a

Isuzu Motors Limited

DIMENSIONS OF INTERIOR
(Conform to Art. 253 b of Appendix J)

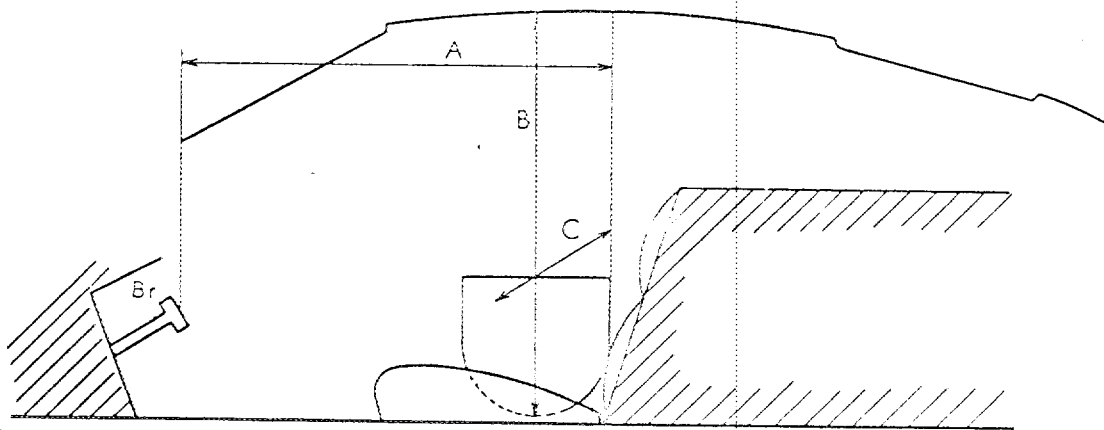
Isuzu PR 20S '67

For four seaters :



Minimum		Dimensions		
A	B	C	D	E
167 cm	92 cm	122 cm	90 cm	122 cm

For two seaters :



Minimum		Dimensions
A	B	C



JAPAN AUTOMOBILE FEDERATION F.I.A. Homol. No

1474/1/1V

FEDERATION INTERNATIONALE DE L'AUTOMOBILE

Amendment to Form of Recognition in accordance with the International Sporting Code.

Make Model Isuzu PR20S (Bellett 1500 Sports)' 67
Modification's application starts with serial chassis PR20-4068750
Application of this amendment started the No. engine G 150D-356847
Commercial denomination after application of modifications Oct. 1966
The modifications are to be considered as: Variant / normal evolution of the type Mar. 1967
Date amendment is valid from 1/1/68 List 1968/1

Description of amendment Two door sedan.
The model produced on the same line as four door sedan.

3/4 view of car from front



3/4 view of car from rear



FIA Recognition No.1474

Stamp and signature of National Sporting Authority

JAPAN AUTOMOBILE FEDERATION

Handwritten signature of Kazunari Komotori

Kazunari Komotori

Stamp and signature of F.I.A.

Handwritten signature and circular stamp of F.I.A.