



JAPAN AUTOMOBILE FEDERATION

F. I. A. Recognition No. **1475**
Group **2 - Tourisme**

FEDERATION INTERNATIONALE DE L'AUTOMOBILE

Form of recognition in accordance with
Appendix 2 to the International Sporting Code.

Manufacturer **Isuzu Motors Limited**
Serial No of chassis **PR 91-4203794**
Serial No of engine **G 101-303617**

Cylinder-capacity **1584** cm³ **96.66** cu. in.

Model **Isuzu PR 91 (Bellett 1000 GT)**
Manufacturer **Isuzu Motors Limited**
List **16/2**

Recognition is valid from **1st April 1967**
The manufacturing of the model described in this recognition form was started on **August, 1966** and the minimum production of **1,000** identical cars, in accordance with the specifications of this form was reached on **Dec., 1966**

Photograph A, 3/4 view of car from front

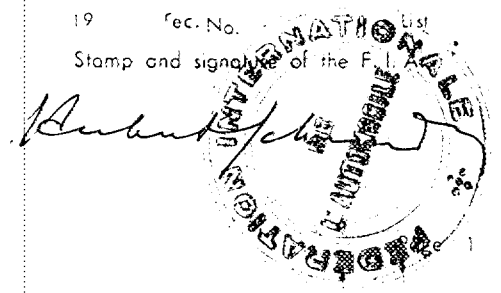


The vehicle described in this form has been subject to the following amendments:

Variants				Normal evolution of the type			
on	19	rec. No.	List	on	19	rec. No.	List
on	19	rec. No.	List	on	19	rec. No.	List
on	19	rec. No.	List	on	19	rec. No.	List
on	19	rec. No.	List	on	19	rec. No.	List
on	19	rec. No.	List	on	19	rec. No.	List

Stamp and signature of the
National Sporting Authority

Stamp and signature of the F. I. A.



Make Isuzu Motors Limited.

Model Isuzu PR 91

F. I. A. Rec. No.

IMPORTANT - the underlined items must be stated in two measuring systems, one of which must be the metric system. See conversion table hereafter.

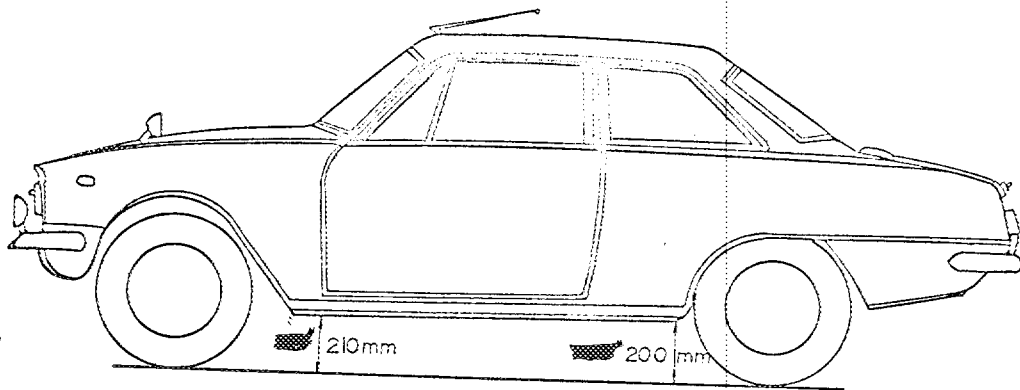
CAPACITIES AND DIMENSIONS

1. <u>Wheelbase</u>	2,350	mm	92.52	inches
2. <u>Front track</u>	1,245	mm	49.02	inches *
3. <u>Rear track</u>	1,215	mm	47.83	inches *
4. Overall length of the car		400.5	cm	inches
5. Overall width of the car		149.5	cm	inches
6. Overall height of the car		133.5	cm	inches
7. <u>Capacity of fuel tank</u> (reserve included):				
	10.5	Gallon US	40	liters
			8.75	Gallon Imp.
8. Seating capacity	4			
9. <u>Weight</u> , total weight of the car with normal equipment, water, oil and spare wheel but without fuel nor repair tools.	915	kg	2,020	lbs.
				cwt

* Differences in track caused by the use of other wheels with different rim widths must be stated when recognition is requested for the wheels concerned.

Specify ground clearance in relation to the track and give drawing of two fixed points of the vehicle's structure at which measurements are taken.

These ground clearance dimensions are only for information when checking the track and can in no way affect the eligibility of the car.



CONVERSION TABLE

1 inch / pouce	--	2.54 cm	1 quart US	--	0.9464 liters
1 foot / pied	--	30.4794 cm	1 pint (pt)	--	0.568 liters
1 square inch / pouce carré	--	6.452 cm ²	1 gallon Imp.	--	4.546 liters
1 cubic inch / pouce cube	--	16.387 cm ³	1 gallon US	--	3.785 liters
1 pound / livre (lb)	--	453.593 gr.	1 hundred weight (cwt)	--	50.802 kg

Make Isuzu Motors Limited.

Model Isuzu PR 91

F. I. A. Rec. No.

CHASSIS AND COACHWORK (Photographs A, B and C)

20. Chassis/body construction : ~~unitary~~ / unitary construction
21. Unitary construction, material (s) Steel, ~~Cast Iron, Aluminium~~
Separate construction
22. Separate construction, material (s) of chassis
23. Material (s) of coachwork
24. Number of doors 2 Material (s) Steel
25. Material (s) of bonnet Steel
26. Material (s) of boot lid Steel
27. Material (s) of rear-window Glass
28. Material (s) of windscreen Glass
29. Material (s) of front-door windows Glass
30. Material (s) of rear-door windows
31. Sliding system of door windows Vertical, manual
32. Material (s) of rear-quarter light Glass

ACCESSORIES AND UPHOLSTERY

38. Interior heating : ~~yes~~ - no
39. Air-conditioning : ~~yes~~ - no
40. Ventilation : yes - ~~no~~
41. Front seats, type of seats and upholstery Bucket, Vinyl
42. Weight of front seat (s), complete with supports and rails, out of the car :
12.5 x 2 kg lbs
43. Rear seats, type of seats and upholstery Bench, Vinyl
44. Front bumper, material (s) Steel Weight 6 kg lbs
45. Rear bumper, material (s) Steel Weight 6 kg lbs

WHEELS

50. Type Pressed Steel
51. Weight (per wheel, without tyre) 7.2kg (5 in) or ~~7.2~~ 6.0kg (4.5 in) lbs
52. Method of attachment 4 Wheel pins & Nuts
53. Rim diameter 330.2 mm 13.0 inches
54. Rim width 127 or 114 mm 5 or 4.5 inches

STEERING

60. Type Rack and pinion
61. Servo-assistance : ~~yes~~ - no
62. Number of turns of steering wheel from lock to lock 2.9
63. In case of servo-assistance

Make Isuzu Motors Limited.

Model Isuzu PR 91

F.I.A. Rec. No.

SUSPENSION

- 70. Front suspension (photogr. D), type Independent, Coil Spring, Wishbone
- 71. Type of spring Coil
- 72. Stabiliser (if fitted) Torsion Bar
- 73. Number of shockabsorbers 2
- 74. Type Hydraulic Telescopic
- 78. Rear suspension (photogr. E), type Independent, Diagonal Link
- 79. Type of spring Coil and Transverse Leaf
- 80. Stabiliser (if fitted)
- 81. Number of shockabsorbers 2
- 82. Type Hydraulic Telescopic

BRAKES (photographs F and G)

- 90. System Hydraulic
- 91. Servo-assistance (if fitted), type
- 92. Number of hydraulic master cylinders 1

	FRONT		REAR	
93. Number of cylinders per wheel	2		1	
94. Bore of wheel cylinder (s)	57.2	mm in.	22.2	mm in.
Drum brakes				
95. Inside diameter		mm in.	203.2	mm in.
96. Length of brake linings		mm in.	195.0	mm in.
97. Width of brake linings		mm in.	37.1	mm in.
98. Number of shoes per brake			2	
99. Total area per brake		mm ² sq. in.	14,430	mm ² sq. in.
Disc brakes				
100. Outside diameter	237	mm in.		mm in.
101. Thickness of disc	10	mm in.		mm in.
102. Length of brake linings	60	mm in.		mm in.
103. Width of brake linings	45	mm in.		mm in.
104. Number of pads per brake		2		
105. Total area per brake	5,400	mm ² sq. in.		mm ² sq. in.

Make Isuzu Motors Limited.

Model Isuzu PR 91

F. I. A. Rec. No.

ENGINE (photographs J and K)

130. Cycle	4	131. Number of cylinders	4
132. Cylinder arrangement	In-Line		
133. Bore	82 mm	134. Stroke	75 mm
	3,229 in.		2.953 in.
135. Capacity per cylinder			24.17 cu. in.
	396 cm ³		
136. Total cylinder-capacity	1,584 cm ³		96.68 cu. in.
137. Material (s) of cylinder block	Cast Iron		
138. Material (s) of sleeves (if fitted)			
139. Cylinder-head, material (s)	Aluminum	Number fitted	1
140. Number of inlet ports	4	141. Number of exhaust ports	4
142. Compression ratio	9.3		
143. Volume of one combustion chamber		47.7 cm ³	cu. in.
144. Piston, material	Aluminum	145. Number of rings	3
146. Distance from gudgeon pin centre line to highest point of piston crown			
	42.2 mm		inches
147. Crankshaft : stamped / stamped		148. Type of crankshaft : integral /	
149. Number of crankshaft main bearings	5 set		
150. Material of bearing cap	Cast Iron		
151. System of lubrication : oil in sump / oil in sump			
152. Capacity, lubricant	3.2 litres	pts	quarts US
153. Oil cooler : yes / no			
154. Method of engine cooling	Water		
155. Capacity of cooling system	5.7 litres	pints	quarts US
156. Cooling fan (if fitted), dia.	32 cm	inches	
157. Number of blades of cooling fan	4		

Bearings

158. Crankshaft main, type	Plain	Dia.	56 mm	in.
159. Connecting rod big end,	Plain	Dia.	49 mm	in.

Weights

160. Flywheel (clean)	6.0 kg	lbs	
161. Flywheel with clutch (all turning parts)		11.1 kg	lbs
162. Crankshaft	15.3 kg	lbs	
163. Connecting rod		0.59 kg	lbs
164. Piston with rings and pin	0.515 kg	lbs	

FOUR STROKE ENGINES

170. Number of camshafts 1 171. location Cylinder Block
 172. Type of camshaft drive Chain drive
 173. Type of valve operation Push Rod

INLET (see page 8) *

180. Material(s) of inlet manifold Alminum
 181. Diameter of valves 41 mm 1.614 inches
 182. Max. valve lift 9.3 mm 0.368 in. 183. Number of valve springs 2
 184. Type of spring Coil 185. Numbr of valves per cylinder 1
 186. Tappet clearance for checking timing (cold) 0.30 mm inches
 187. Valves open at (with tolerance for tappet clearance indicated) 38° BTDC ± 3°
 188. Valves close at (with tolerance for tappet clearance indicated) 82° ABDC ± 3°
 189. Air filter, type Paper

EXHAUST (see page 8)

195. Material (s) of exhaust manifold Steel
 196. Diameter of valves 36 mm 1.417 inches
 197. Max. valve lift 9.3 mm 0.368 in. 198. Number of valve springs 2
 199. Type of spring Coil 200. Number of valves per cylinder 1
 201. Tappet clearance for checking timing (cold) 0.35 mm inches
 202. Valves open at (with tolerance for tappet clearance indicated) 75° BBDC ± 3°
 203. Valves close at (with tolerance for tappet clearance indicated) 35° ATDC ± 3°

CARBURETION (photograph N)

210. Number of carburetors fitted 2 211. Type S.U. Type (Variable Venturi)
 212. Make Hitachi 213. Model HJD 38W
 214. Number of mixture passages per carburetor
 215. Flange hold diameter of exit port(s) of carburettor 38 mm in.
 216. Minimum dimensions of mixture pasage (s) with piston at max. height (example: SU) inches
 29 mm

INJECTION (if fitted)

220. Make of pump 221. Number of plungers
 222. Model or type of pump 223. Total number of injectors
 224. Location of injectors
 225. Minimum diameter of inlet pipe mm inches

*: for additional information concerning two-stroke engines and super-charged engines see page 13.

Make Isuzu Motors Limited.

Model Isuzu PR 91

F.I.A. Rec. No

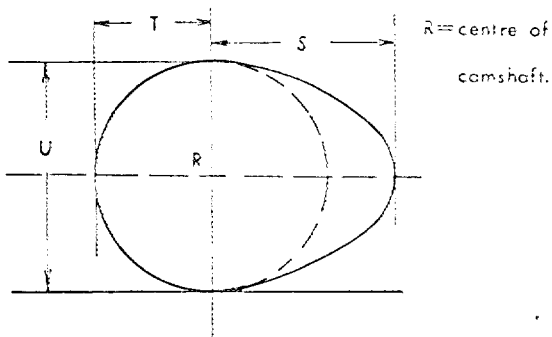
ENGINE ACCESSORIES

- 230. Fuel pump : mechanical ~~add / pl / add / pl~~
- 231. No fitted 1
- 232. Type of ignition system Make and Break Ignition
- 233. No of distributors 1
- 234. No of ignition coils 2
- 235. No of spark plugs per cylinder 1
- 236. Generator, type: dynamo/alternator-number fitted 1
- 237. Method of drive V Belt drive
- 238. Voltage of generator 12 volts
- 239. Battery, number 1
- 240. Location Engine Room
- 241. Voltage of battery 12 volts

ENGINE AND CAR PERFORMANCES (as declared by manufacturer in catalogue)

- 250. Max. engine output 90 PS (type of horsepower: JIS) at 5,400 rpm
- 251. Maximum rpm 5,400 output at that figure 90 PS
- 252. Maximum torque 13.0kg-m at 4,200 rpm
- 253. Maximum speed of the car 100 km/hour miles / hour

255.



Inlet cam

S =	21.5	mm	0.845	inches
T =	14.0	mm	0.575	inches
U =	29.3	mm	1.155	inches

Exhaust cam

S =	21.5	mm	0.845	inches
T =	14.0	mm	0.575	inches
U =	29.3	mm	1.155	inches

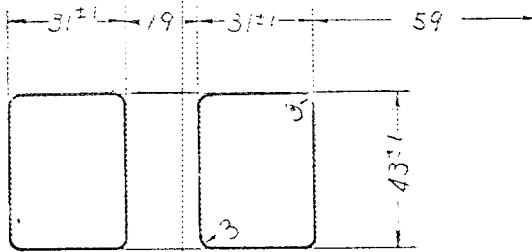
Make Isuzu Motors Limited.

Model Isuzu PR 91

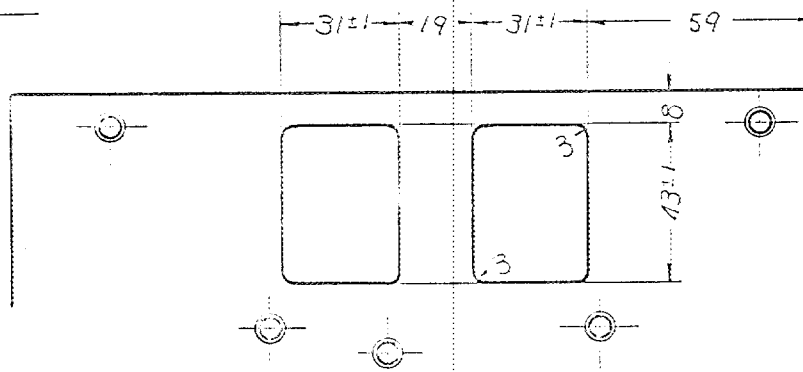
Engine center

P. I. A. Rec. No.

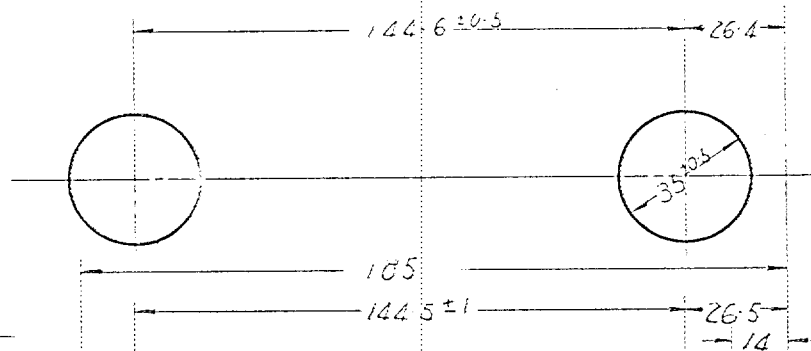
Drawing inlet manifold ports, side of cylinder-head. Indicate scale or dimensions and manufacturing tolerance.



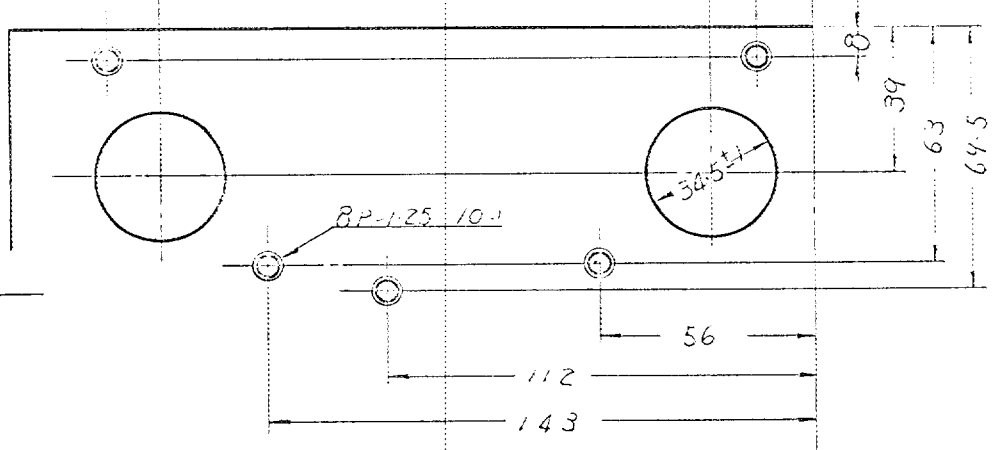
Drawing of entrance to inlet part of cylinder-head. Indicate scale or dimensions and manufacturing tolerance.



Drawing exhaust manifold ports, side of cylinder-head. Indicate scale or dimensions and manufacturing tolerance.



Drawing of exit to exhaust port of cylinderhead. Indicate scale or dimensions and manufacturing tolerance.



unit; mm

Make Isuzu Motors Limited.

Model Isuzu FR 91

F.I.A. Rec. No.

DRIVE TRAIN

CLUTCH

260. Type of clutch Dry Plate
 261. No. of plates
 262. Dia. of plates 20.5 cm inches
 263. Dia. of linings, inside 14.6 cm in. outside 20.5 cm in.
 264. Method of operating clutch Mechanical

GEAR BOX photograph H)

270. Manual type, make Isuzu Method of operation Mechanical
 271. No. of gear-box ratios forward 4
 272. Synchronized forward ratios 4 (1, 2, 3, 4)
 273. Location of gear-shift Floor
 274. Automatic, make type
 275. No. of forward ratios 276. Location of gear-shift

277.	Manual		Automatic		Ratio	Alternative manual		automatic	
	Ratio	No. teeth	Ratio	No. teeth		Ratio	No. teeth	Ratio	No. teeth
1	3.207	$\frac{28}{19} \times \frac{37}{17}$			2.487	$\frac{27}{20} \times \frac{35}{19}$	3.507	$\frac{29}{18} \times \frac{37}{17}$	
2	1.989	$\frac{28}{19} \times \frac{27}{20}$			1.671	$\frac{27}{20} \times \frac{26}{21}$	2.175	$\frac{29}{18} \times \frac{27}{20}$	
3	1.356	$\frac{28}{19} \times \frac{23}{25}$			1.242	$\frac{27}{20} \times \frac{23}{25}$	1.418	$\frac{29}{18} \times \frac{22}{25}$	
4	1.000				1.000		1.000		
5									
6									
reverse	3.592	$\frac{28}{19} \times \frac{39}{16}$			3.291	$\frac{27}{20} \times \frac{39}{16}$	3.927	$\frac{29}{18} \times \frac{39}{16}$	

278. Overdrive, type
 279. Forward gears on which overdrive can be selected
 280. Overdrive ratio

FINAL DRIVE

290. Type of final drive Hypoid Bevel
 291. Type of differential Bevel
 292. Type of limited slip differential (if fitted) ~~Optional~~
 293. Final drive ratio 3.727 4.100 4.300 4.625
 Number of teeth 41/11 41/10 43/10 37/8

Make Isuzu Motors Limited.

Model Isuzu PR 91

F.I.A. Rec. 1-2

IMPORTANT! The conformity of the car with the following items of the present recognition form is to be disregarded during the scrutineering, when the vehicle has been entered in group 2 (Touring cars) or 3 (Grand Touring cars) 41, 77, 80, 91, 142, 143, 144, 145, 146, 153, 156, 157, 160, 161, 162, 163, 164, 162, 184, 186, 187, 188, 189, 199, 201, 202, 203, 212, 213, 215, 216, 222, 223, 236, 250, 251, 252, 253, and photographs I, J, K and O.

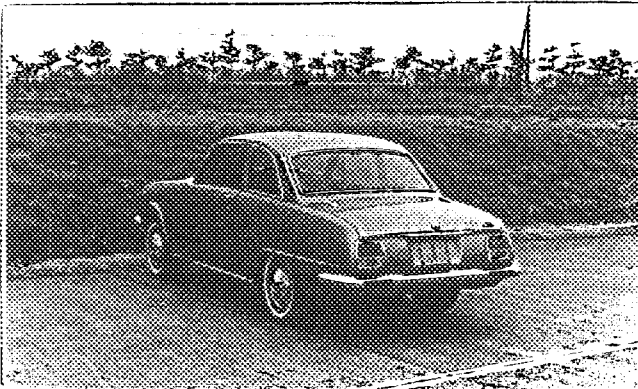
During the scrutineering of cars entered in group 4 (Sports cars) only the following items of the present recognition form are to be taken into consideration: 1, 2, 3, 9, 20, 21, 22, 23, 24, 25, 26, 70, 71, 78, 79, 90, 130, 131, 132, 133, 134, 135, 136, 137, 138, 139, 140, 141, 147, 148, 149, 150, 158, 159, 170, 171, 172, 173, 185, 200, 270, 271, 274, 275, 290, 291, 292 and photographs A, B, D, E, F, G, H, J, K, and O.

Optional equipment affecting preceding information. This to be stated together with reference number.

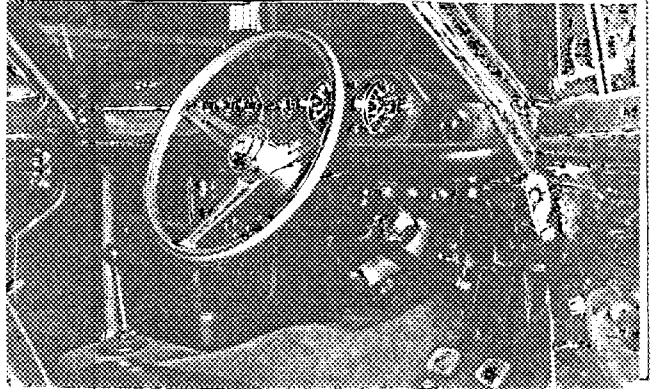
CAPACITY
7. Capacity of fuel tank 90 lbs 23.8 Gallon US
FINAL DRIVE
292. Type of limited slip differential Friction

Photograph

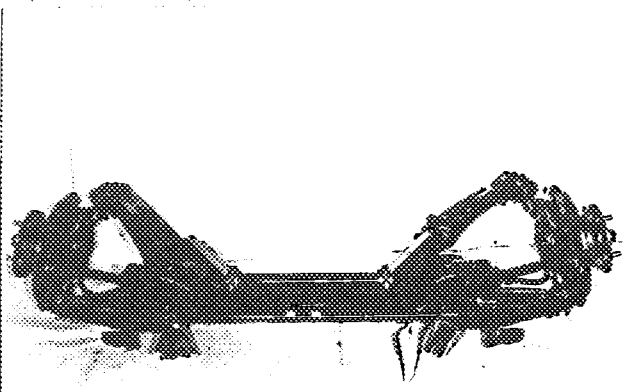
B, 3/4 view of car from rear



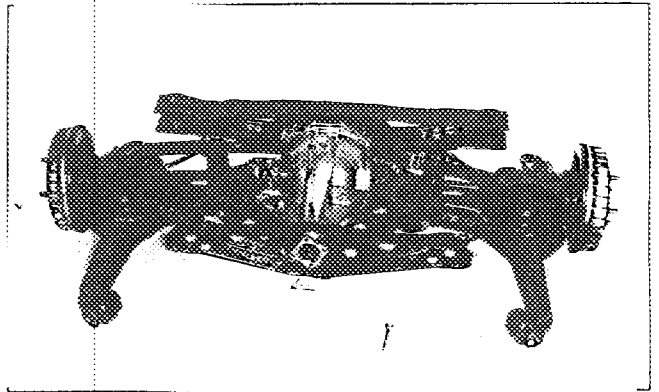
C, interior view of car through driver's door (open or removed) with dashboard



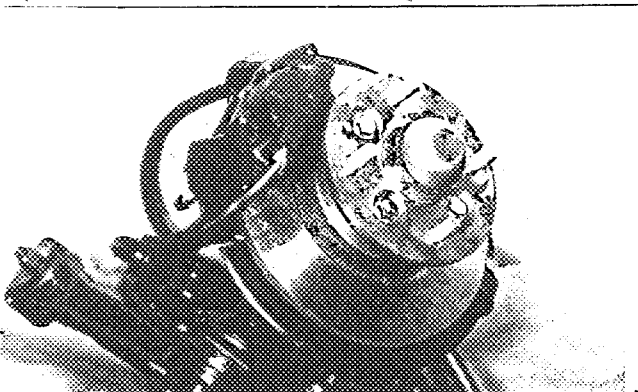
D, front axle complete, removed from car. Without wheels.



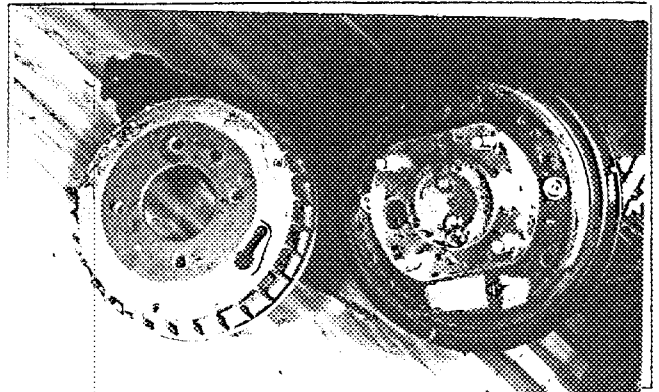
E, Rear axle complete without wheels, removed from car.



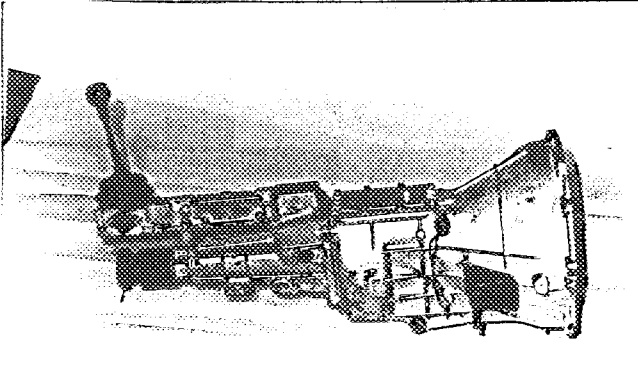
F, front brake, drum removed or disc with caliper(s)



G, rear brake, drum removed or disc with caliper(s)



H, gear-box, view from side



I, silencer + exhaust pipes after exhaust manifold.



Make Isuzu Motors Limited.

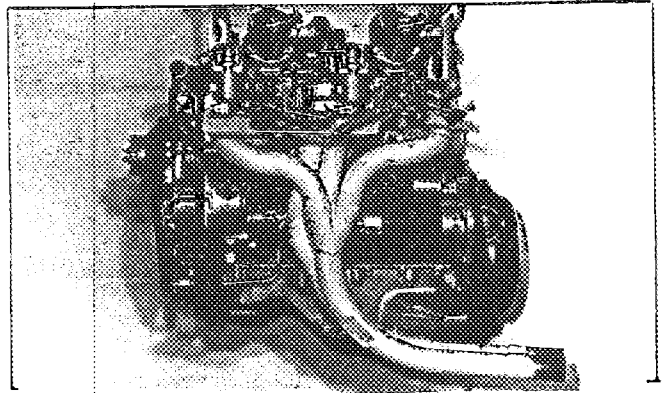
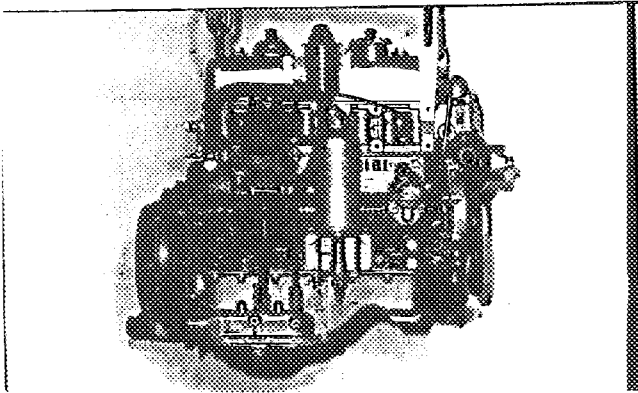
Model Isuzu PR-91

F.I.A. Rec. No

Photograph

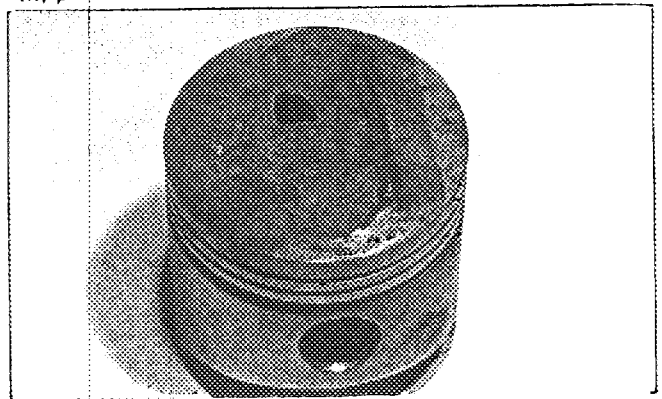
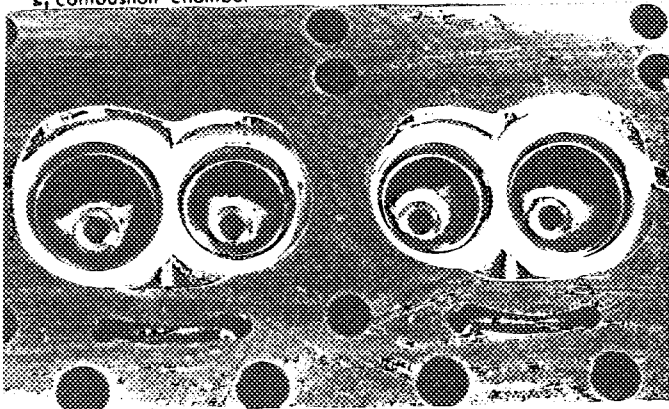
Engine unit out of car, from right. With clutch and accessories but without air filter nor gear-box.

Engine unit out of car, from left. With clutch and accessories but without gear-box nor air filter.



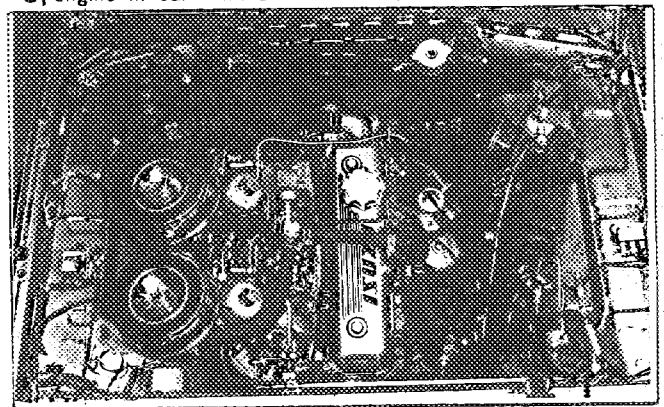
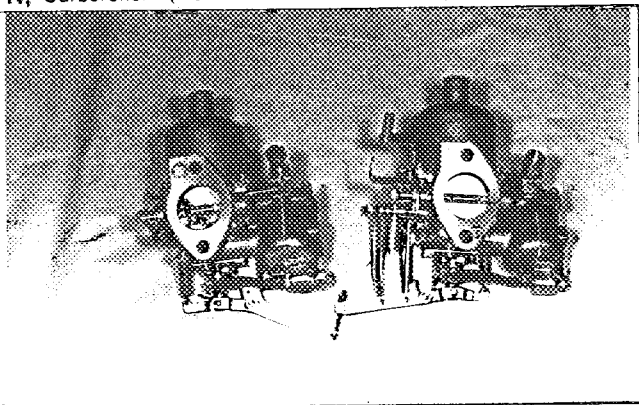
L, combustion chamber

M, piston crown



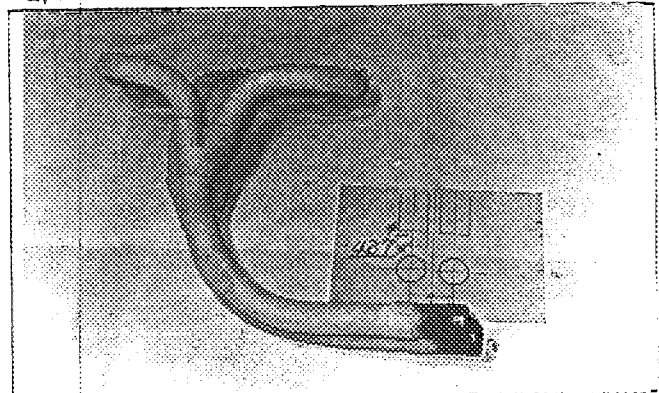
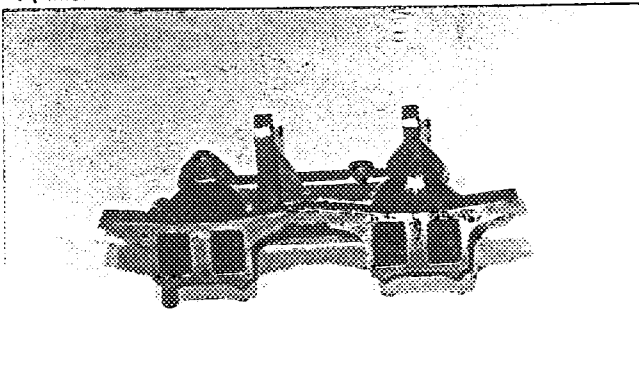
N, Carburettor (view from side of manifold)

O, engine in car with all accessories, bonnet open or removed.



P, inlet manifold

Q, exhaust manifold



Make Isuzu Motors Limited.

Model Isuzu PR 91

F.I.A. Rec. No.

TWO STROKE ENGINES

300. System of cylinder scavenging
301. Type of lubrication
302. Inlet ports, length measured around cylinder wall mm inches
303. Height inlet port mm in. 304. Area mm² sq. in.
305. Exhaust ports, length measured around cylinder wall mm inches
306. Height exhaust port mm in. 307. Area mm² sq. in.
308. Transfer port, length measured around cylinder wall mm inches
309. Height transfer port mm in. 310. Area mm² sq. in.
311. Piston ports, length measured around piston mm inches
312. Height piston port mm in. 313. Area mm² sq. in.
314. Method of precompression 315. Precompression cyl.: yes/no
316. Bore mm inches 317. Stroke mm inches
318. Distance from top of cyl. block to highest point of exhaust port : mm inches
319. Distance from top of cyl. block to lowest point of inlet port : mm inches
320. Distance from top of cyl. block to highest point of transfer port : mm inches
321. Drawing of cylinder ports.

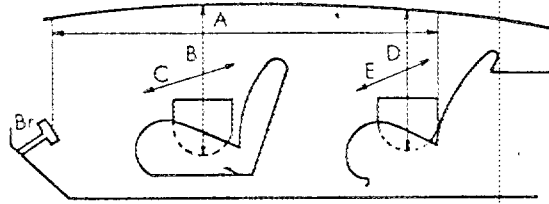
330. Supercharging—state full details hereafter :

JAPAN AUTOMOBILE FEDERATION

難波靖治

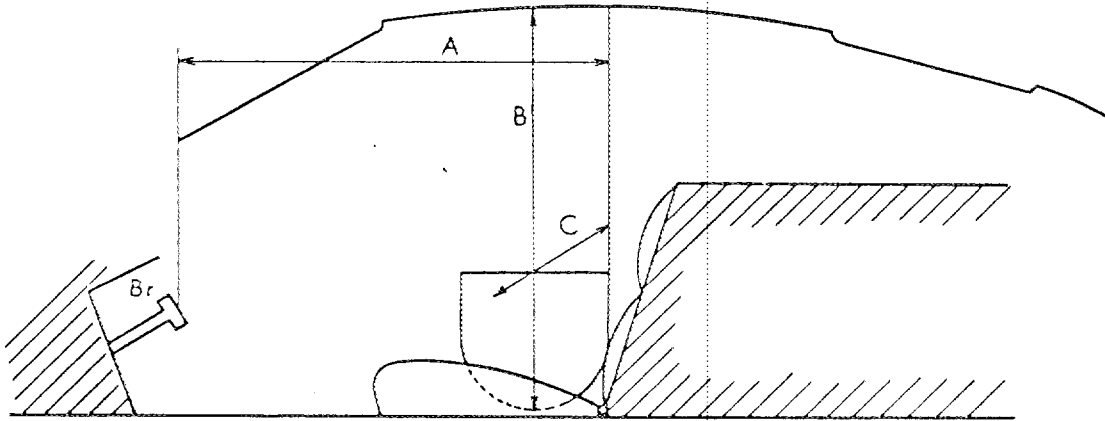
Yasuharu Nanba

For four seaters :



Minimum		Dimensions		
A	B	C	D	E
164 cm	92 cm	122 cm	88 cm	120 cm

For two seaters :



Minimum		Dimensions
A	B	C



JAPAN AUTOMOBILE FEDERATION F.I.A. Homol. No

1475/1/1E

FEDERATION INTERNATIONALE DE L'AUTOMOBILE

Amendment to Form of Recognition in accordance with the International Sporting Code.

Make ISUZU MOTORS LIMITED

Model ISUZU PR91 (BELLETT 1600GT)

Modification's application starts with serial

No. chassis PR91-4207950 engine G161-334307

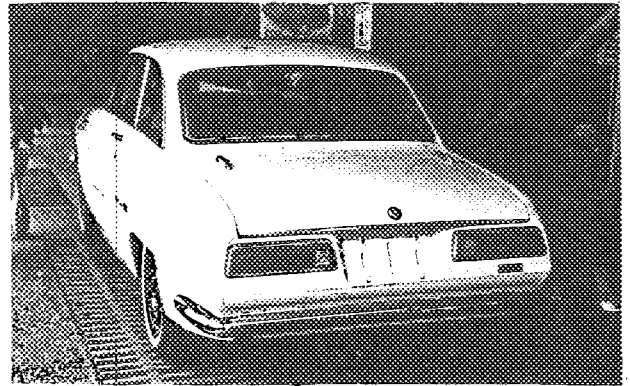
Application of this amendment started the Feb. 1968

Commercial denomination after application of modifications Mar. 1968

The modifications are to be considered as: ~~Modification~~ / normal evolution of the type

Date amendment is valid from 11/1/68 list 1968/10

Description of amendment Original F.I.A. Recognition No. 1475



Photograph A.

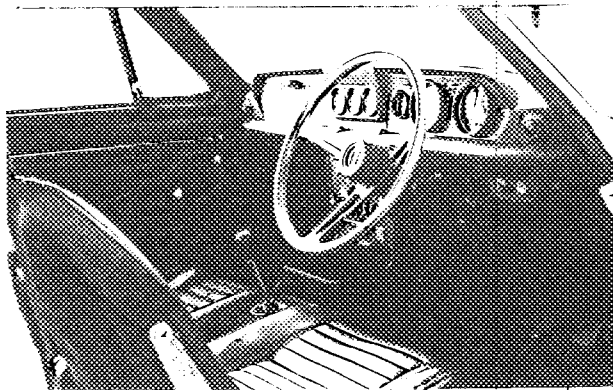
Photograph B.

3/4 View of car from front

3/4 View of car from rear

o Radiator grille & Head Light Assy.

o Tail & Stop Lamp Assy.



Stamp and signature of National Sporting Authority

signature of F.I.A.

Interior view of car through driver's door

JAPAN AUTOMOBILE FEDERATION

o Steering wheel

Chairman

of Technical Sub-commission

Yasuharu Nanba (handwritten signature)

Yasuharu Nanba

(Handwritten signature)