

Manufacturers Reference No. for Application

VM 62/1



F.I.A. Recognition No.

1107

# ROYAL AUTOMOBILE CLUB

PALL MALL, LONDON, S.W.1.

## Federation Internationale de l'Automobile.

Form of Recognition in accordance with  
Appendix J to the  
International Sporting Code.

Manufacturer Vauxhall Motors Ltd.

Model F.B. Year of Manufacture 1961-1962

Serial No. of Chassis 1001 onwards

Engine 1001 onwards

Type of Coachwork Saloon

Recognition is valid from ~~August 1961~~ 22 FEB 1962 In category Touring

*General list 9  
Additional 6*

Photograph to be affixed here  $\frac{3}{4}$  view of car from front right.

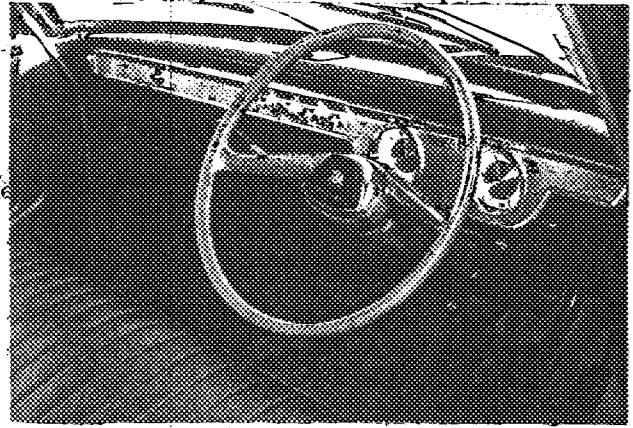
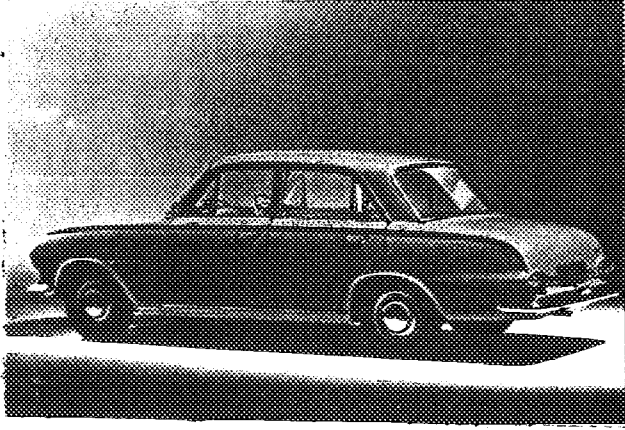


*Hubert Johnson*

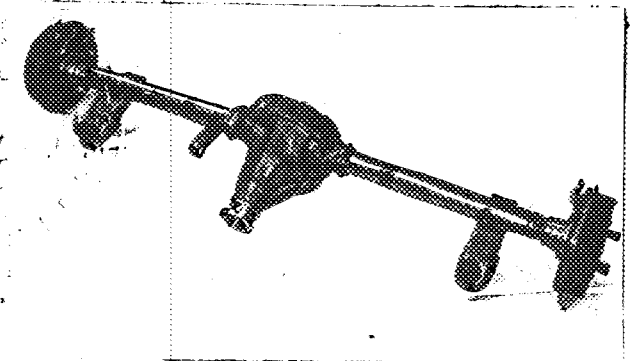
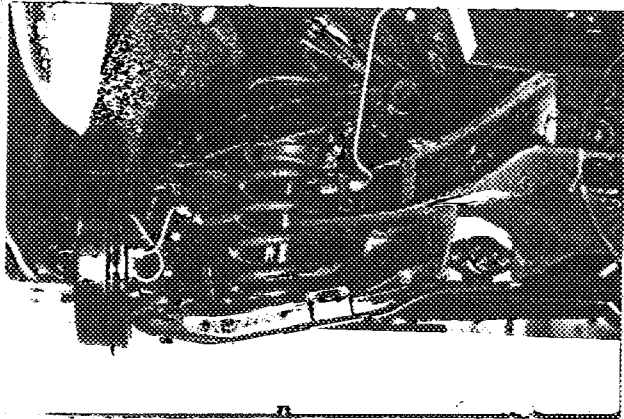
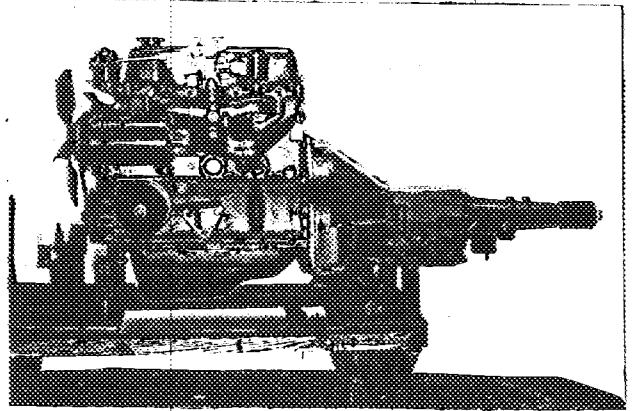
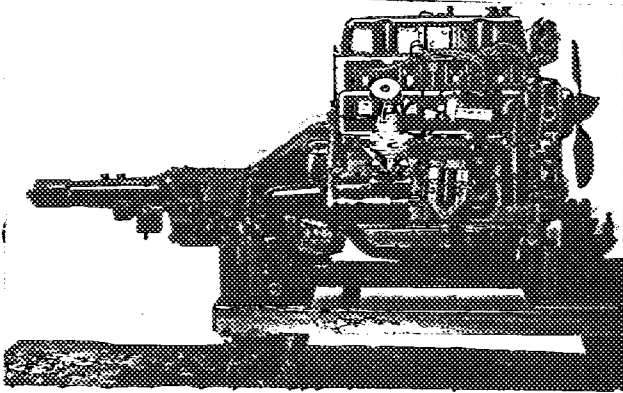
Stamp of F.I.A. to be  
affixed here.

General description of car:

92 Cu. In., 4 Cylinder, 4 Door, 4-5 Seat Saloon.



s to be affixe



**ENGINE**

in line Yes

No. of cylinders 4 in V -

opposed -

Cycle 4 stroke Firing order 1,3,4,2

Capacity 1508 c.c. Bore 79.37 m.m. Stroke 76.20 m.m.

Maximum rebore 0.06" Resultant capacity 1523 c.c.

Material of cylinder block Chromium Cast-Iron Material of sleeves, if fitted -

Distance from crankshaft centre line to top face of block at centre line of cylinders 220.6 m.m.

Material of cylinder head Cast-Iron Volume of one combustion chamber 45.5 c.c.

Compression ratio 8.1:1

Material of piston Aluminium Alloy No. of piston rings 3

Distance from gudgeon pin centre line to highest point of piston crown 45.64 m.m.

Bearings { Crankshaft main bearings: Type White Metal Dia. 53.9 m.m.  
 Connecting rod big end: Type Copper/Lead Dia. 47.6 m.m.

Weights { Flywheel 11.45 kg.  
 Crankshaft 15.06 kg.  
 Connecting rod 0.52 kg.  
 Piston with rings 0.425 kg.  
 Gudgeon pin 0.113 kg.

No. of valves per cylinder 2 Method of valve operation O.H. Push Rod.

No. of camshafts One Location of camshafts Left Hand (from front)

Type of camshaft drive Chain, at front of engine.

Diameter of valves: Inlet 36.5 m.m. Exhaust 31.75 m.m.

Diameter of port at valve seat: Inlet 30.6 m.m. Exhaust 26.1 m.m.

Tappet clearance for checking timing: Inlet 0.33 (hot) m.m. Exhaust 0.33 (hot) m.m.

Valves open: Inlet 19.6° B.T.D.C. Exhaust 51.6° B.B.D.C.

Valves close: Inlet 60.6° A.B.D.C. Exhaust 28.6° A.T.D.C.

Maximum valve lift: Inlet 8.7 m.m. Exhaust 8.7 m.m.

Degrees of crankshaft rotation from zero to—

Maximum lift: Inlet 125.6° Exhaust 125.6°

$\frac{3}{4}$  Maximum lift: Inlet 78° Exhaust 78°

Valve springs: Inlet Helical Coil Exhaust Helical Coil

Type Helical Coil No. per valve One

Carburettor: Type Down Draft No. fitted One  
 (up or down draft, horizontal)

Make Zenith Model 34 VN

Flange hole diameter 34 m.m. Choke diameter 25 m.m.

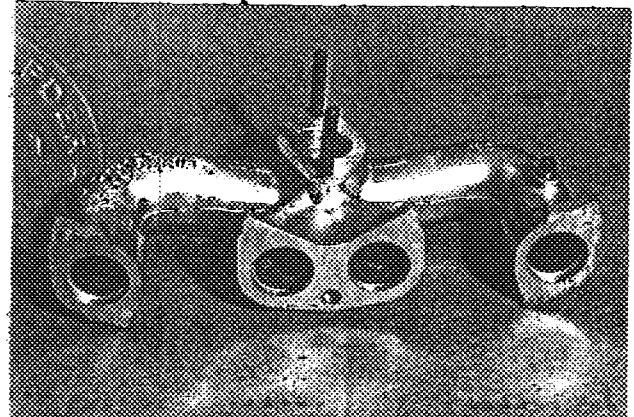
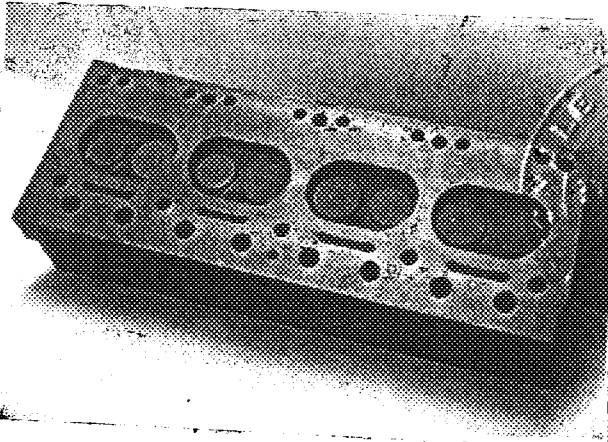
Main jet identification No. 82

Air filter: Type Oil Watted No. fitted One

Inlet manifold:

Diameter of flange hole at carburettor 35 m.m.

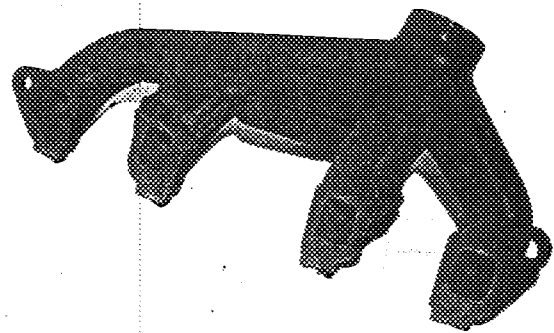
Diameter of flange hole at port 33 m.m.



Exhaust manifold:

Diameter of flange hole at port Square aperture 26 x 31 m.m.

Diameter of flange hole at connection to silencer inlet pipe 42 m.m.



## ENGINE ACCESSORIES

Make of fuel pump AC-Delco No. fitted One

Method of operation Mechanical Drive from Camshaft.

Type of ignition system Coil coil or magneto

Make of ignition AC-Delco Model 7952665.

Method of advance and retard Centrifugal and Vacuum

Make of ignition coil AC-Delco Model Oil Filled

No. of ignition coils One Voltage 12

Make of dynamo Lucas Model G-40-1

Voltage of dynamo 12 Maximum output 19 amps.

Make of starter motor Lucas Model M 35 G

Battery: No. fitted One Voltage 12 Capacity 38 amp. hour

Make Vauxhall Model Victor (FB) F.I.A. Recognition No.  
 Manufacturers Reference No. of Application VM 62/1

**TRANSMISSION**

Make of clutch Borg & Beck Type Dry  
 Diameter of clutch plate 7.25" No. of plates One  
 Method of operating clutch Hydraulic  
 Make of gearbox Vauxhall Type 3 speed syncr., 4 speed opt.  
 No. of gearbox ratios 3 forward, 1 reverse.  
 Method of operating gearshift Manual  
 Location of gearshift Steering Column.  
 Is overdrive fitted? No  
 Method of controlling overdrive, if fitted N.A.

	GEARBOX RATIOS		ALTERNATIVE RATIOS					
	Ratio	No. of Teeth	Ratio	No. of Teeth	Ratio	No. of Teeth	Ratio	No. of Teeth
1.	3.186	⊗			3.29			
2.	1.635				2.13	∅		
3.	1:1				1.355			
4.					1:1			
5.								

Type of final drive Hotchkiss  
 Type of differential Hypoid Bevel  
 Final drive ratio 3.9 Alternatives 4.1  
 No. of teeth 10/39 8/33  
 Overdrive ratio, if fitted N.A.

**WHEELS**

Type Disc Weight 5.4 kg.  
 Method of attachment Stud  
 Rim diameter 330.2 m.m. Rim width 101.6 m.m.  
 Tyre size: Front 5.60 - 13 Rear 5.60 - 13

**BRAKES**

Method of operation Hydraulic.  
 Is servo assistance fitted? No  
 Type of servo, if fitted N.A.  
 No. of hydraulic master cylinders One Bore 17.8 m.m.

	Front		Rear
No. of wheel cylinders	2 per brake		1 per brake
Bore of wheel cylinders	20.25	m.m.	19.05
Inside diameter of brake drums	203.2	m.m.	203.2
No. of shoes per brake	2		2
Outside diameter of brake discs	-	m.m.	-
No. of pads per brake	-		-
Dimensions of brake linings per shoe or pad (if all shoes or pads in each brake are not of same dimensions, specify each)			

	Front		Rear
Length	195.25	m.m.	195.25
		m.m.	
Width	38.1	m.m.	38.1
Total area per brake	1482.5	m.m. <sup>2</sup>	1482.5

### SUSPENSION

	Front		Rear
Type	Independent Wish Bone		Beam Axle
Type of spring	Coil		Semi Elliptic Leaf
Is stabiliser fitted?	Yes		No
Type of shock absorber	Double Acting		Telescopic
No. of shock absorbers	2		2

### STEERING

Type of steering gear	Burman. Recirculating Ball
Turning circle of car	10.3 m., approx.
No. of turns of steering wheel from lock to lock	3.8

### CAPACITIES AND DIMENSIONS

Fuel tank	45.5	litres	Sump	4.27	litres
Radiator	6.55	litres			
Overall length of car	445	cm.	Overall width of car	162	cm.
Overall height of car, unladen (with hood up, if appropriate)	144	cm.			
Distance from floor to top of windscreen:					
Highest point	106	cm.	Lowest point	95	cm.
Width of windscreen:					
Maximum width	130	cm.	Minimum width	122	cm.
*Interior width of car	135	cm.			
No. of seats	4				
Track: Front	128.9	cm.	Rear	129.8	cm.
Wheelbase	254	cm.	Ground clearance	16.5	m.m.

\*(To be measured at the immediate rear of the steering wheel, and the width quoted to be maintained in a vertical plane of not less than 25 cms.)

Overall weight with water, oil and spare wheel, but without fuel

Victor Std.	950
Victor Super	955
Victor De-Luxe	970
Victor Estate	1000

Type of lubrication.....

Size of inlet port:  
 Length measured around cylinder wall.....m.m.  
 Height.....m.m. Area.....m.m.<sup>2</sup>

Size of exhaust port:  
 Length measured around cylinder wall.....m.m.  
 Height.....m.m. Area.....m.m.<sup>2</sup>

Size of transfer port:  
 Length measured around cylinder wall.....m.m.  
 Height.....m.m. Area.....m.m.<sup>2</sup>

Size of piston port:  
 Length measured around piston.....m.m.  
 Height.....m.m. Area.....m.m.<sup>2</sup>

Method of pre-compression.....

Bore and stroke of pre-compression cylinder, if fitted.....m.m.

Distance from top of cylinder block to lowest point of inlet port.....m.m.

Distance from top of cylinder block to highest point of exhaust port.....m.m.

Distance from top of cylinder block to highest point of transfer port.....m.m.

Drawing of cylinder ports.

**Supercharger, if fitted**

Make..... Model or Type No.....  
 Type of drive..... Ratio of drive.....

**Fuel injection, if fitted**

Make of pump..... Model or Type No.....  
 Make of injectors..... Model or Type No.....  
 Location of injectors.....

Optional equipment affecting preceding information:—

Floor Change, 4 speed syncromesh gearbox.

\* Gearbox

Constant Mesh Gears	17/22	teeth
2nd. Speed Gears	24/19	
1st. Speed Gears	32/13	
Reverse Gears	33/14	
Reverse 1 DLER Gear	21	

Ø Gearbox

Constant Mesh Gears	17/22	teeth
3rd. Speed Gears	22/21	
2nd. Speed Gears	28/17	
1st. Speed Gears	33/14	
Reverse Gears	33/13	
Reverse 1 DLER Gear	21	





FEDERATION INTERNATIONALE DE L'AUTOMOBILE

VAUXHALL - FB

MARQUE ET MODELE

2/82

VALIDITE HOMOLOGATION

1107

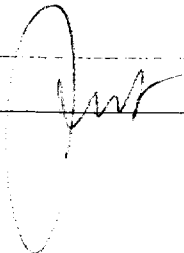
FICHE NR.

+/1600

GROUPE / CLASSE

EXTENSIONS	DEBUT VALIDITE	DESCRIPTION	NOTES

Autres homologations du modèle

Vérifiée le 21/8/95 par  visée ce jour le \_\_\_\_\_ par \_\_\_\_\_