



F.I.A. Recognition No.
Group

1524
II TOURING CAR

ROYAL AUTOMOBILE CLUB

31 Belgrave Square, London, SW1X 8QH

Form of recognition in accordance with appendix J to the International Sporting Code of the
FEDERATION INTERNATIONALE DE L'AUTOMOBILE

Manufacturer	FORD MOTOR COMPANY LIMITED	Cylinder-capacity	1558	cm. ³	95.2	in. ³
Serial No. of chassis/body	BB 48G M05157	Model	ESCORT TWIN CAM			
Serial No. of engine	LF 10316LB	Manufacturer	FORD			
Recognition is valid from	1st May	Manufacturer	FORD			
		List	1968/6			

The manufacturing of the model described in this recognition form started on 10th December 19 67 and the minimum production of 1000 identical cars, in accordance with the specifications of this form was reached on April 26th 19 68

Photograph A. 1/4 view of car from front

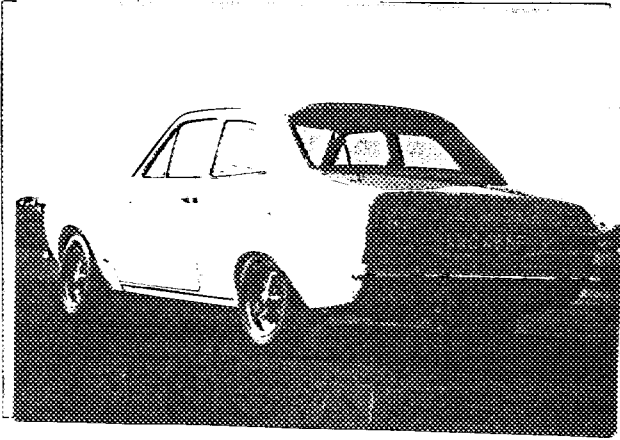


F.I.A. Stamp

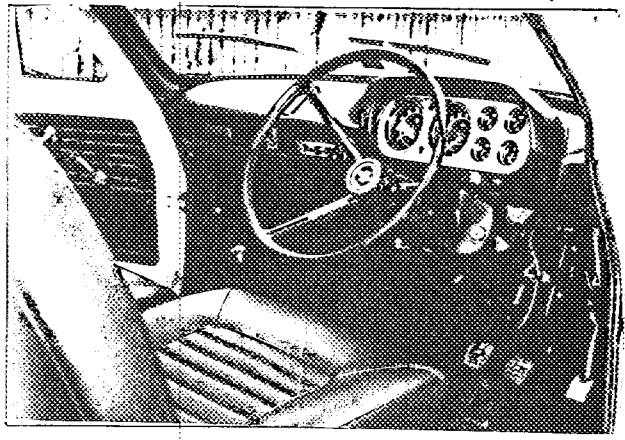
R.A.C. Stamp

1524

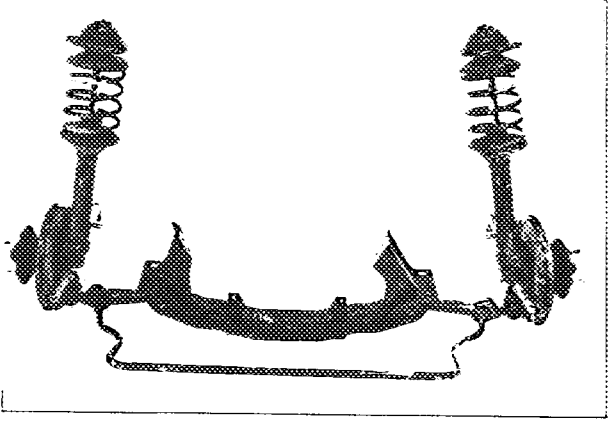
B



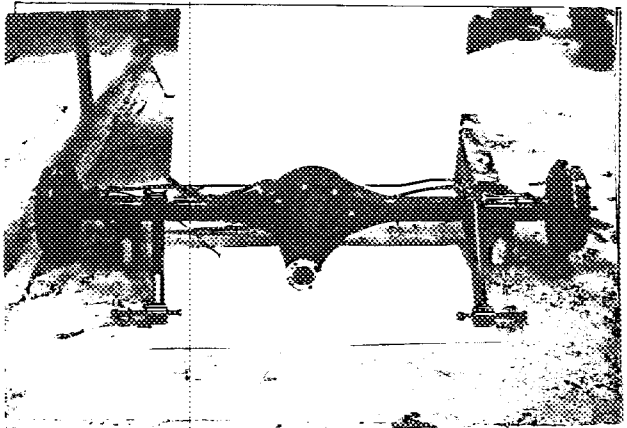
C



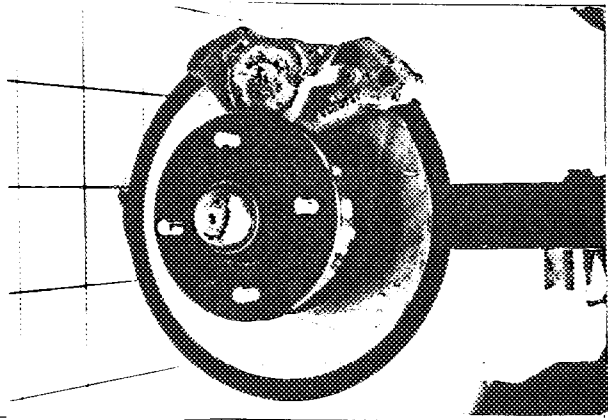
D



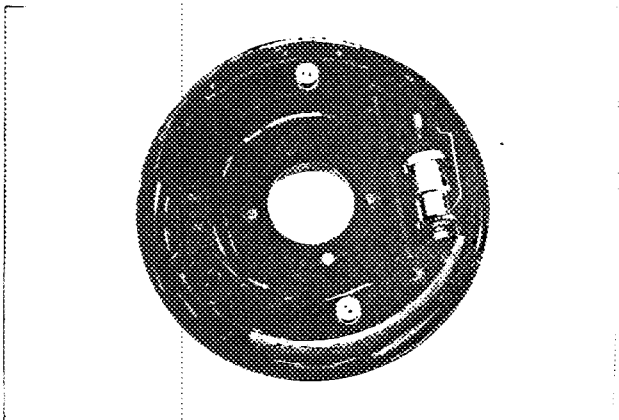
E



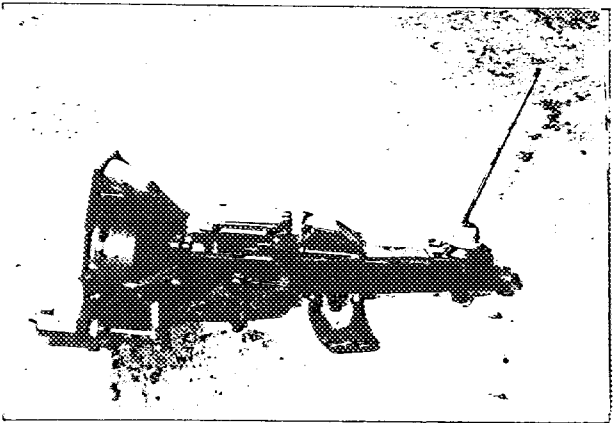
F



G



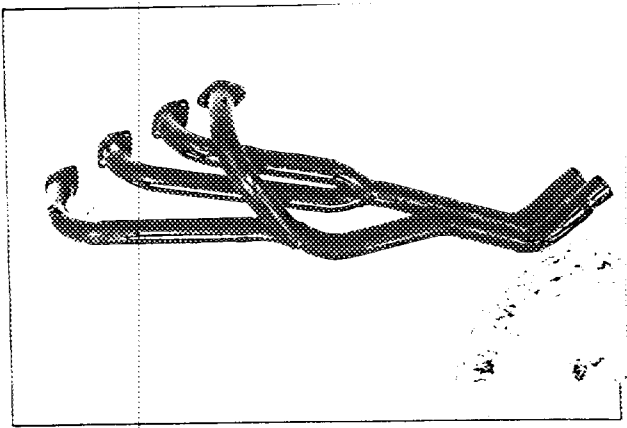
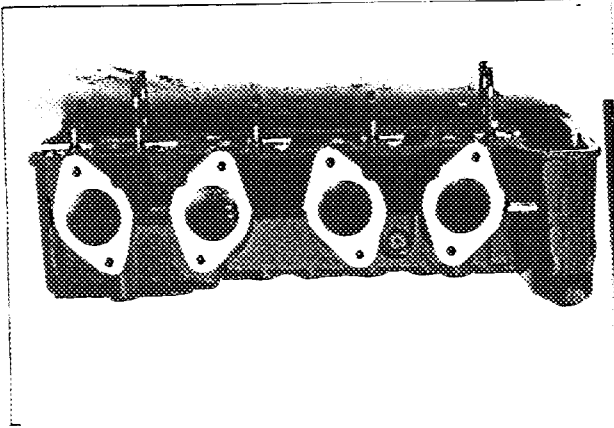
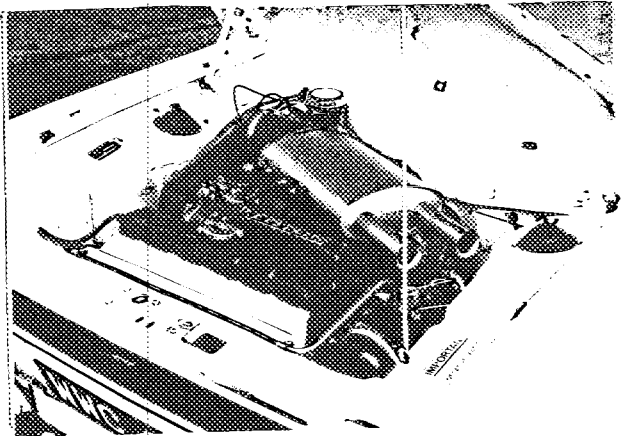
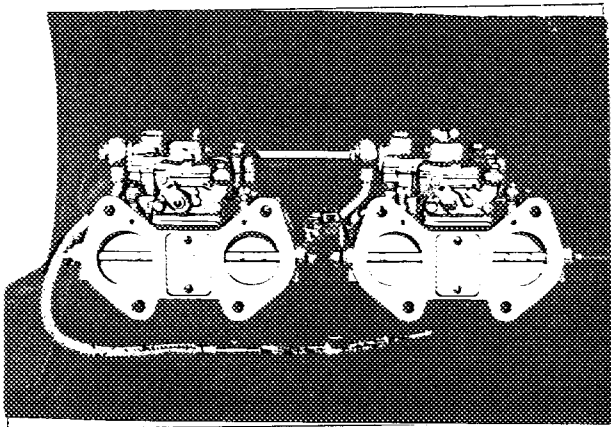
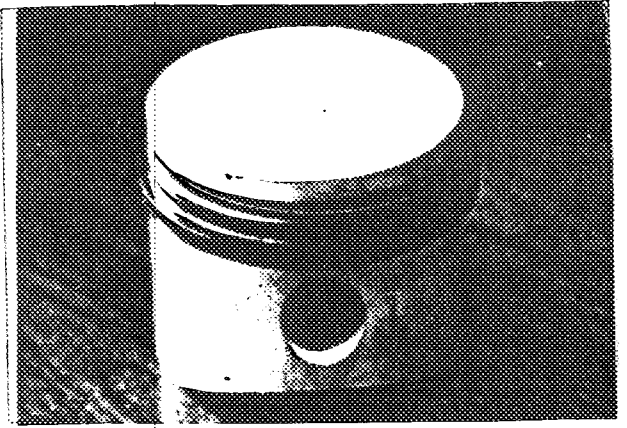
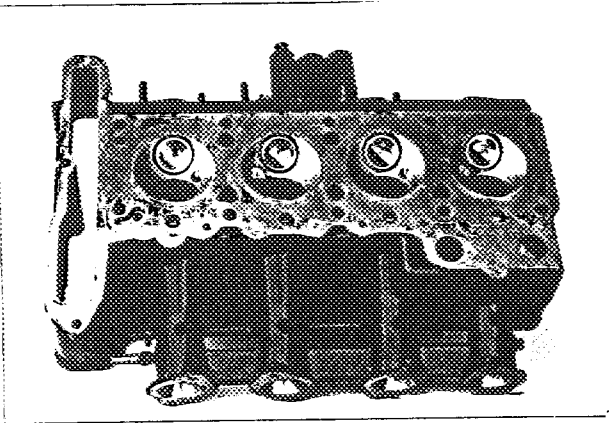
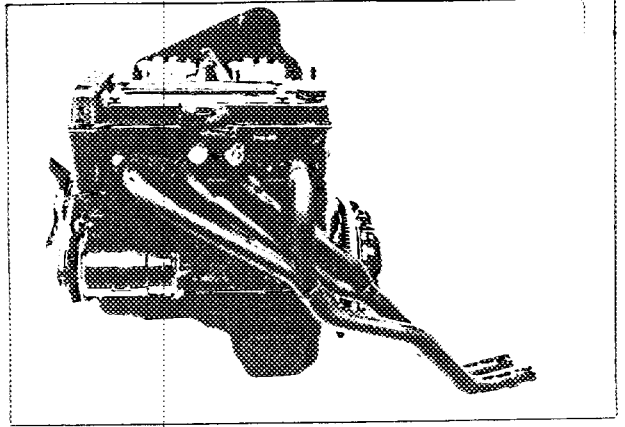
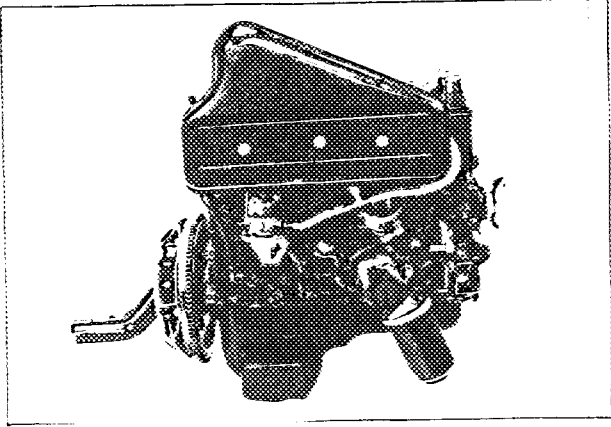
H



I



1524



3 cutter DIA (D) 1.480 38-4
± 0.125

Make FORD

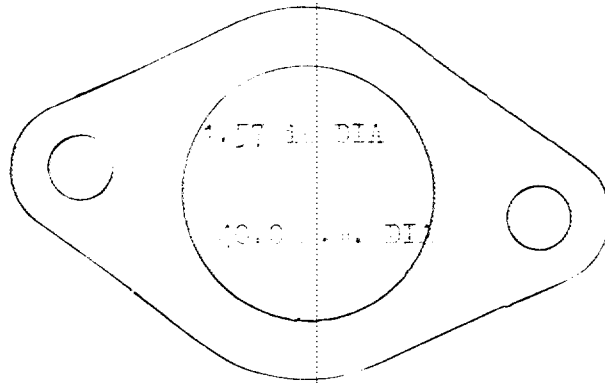
Model ESCORT TWIN CAM

F.I.A. Rec. No. 1524

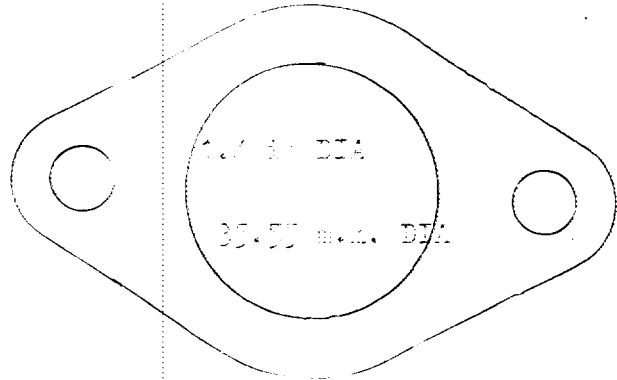
Drawing inlet manifold ports, side of cylinderhead. Indicate scale or dimensions and manufacturing tolerance.

INTEGRAL WITH HEAD

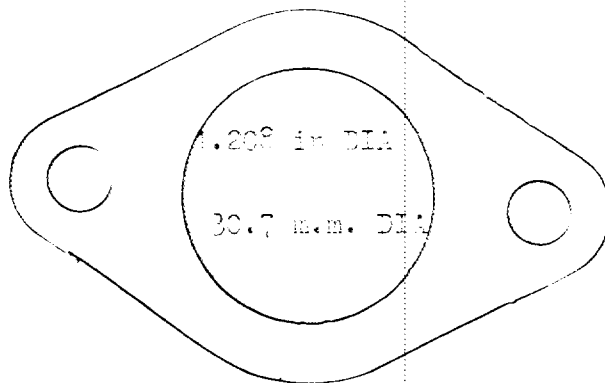
Drawing of entrance to inlet port of cylinderhead. Indicate scale or dimensions and manufacturing tolerance.



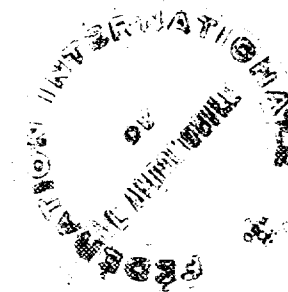
Drawing of exhaust manifold ports, side of cylinderhead. Indicate scale or dimensions and manufacturing tolerance.



Drawing of exit to exhaust port of cylinderhead. Indicate scale or dimensions and manufacturing tolerance.



± 0.030 in.



NOTE 1.

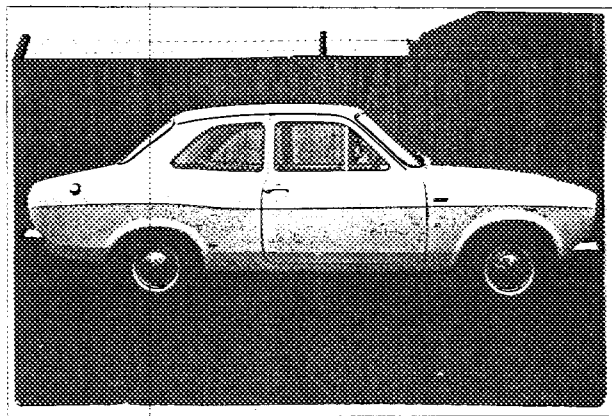
All dimensions must be given in two measuring systems, see Note 3.

CAPACITIES AND DIMENSIONS

1. Wheelbase	2430	mm.	96.0	inches	± 50.0 mm.
2. Front track	± 25.4	mm.	1.0	ins.	
	1314.5	mm.	51.75	inches	
3. Rear track	± 35.4	mm.	1.0	ins.	
	1333.5	mm.	52.5	inches	

Measurement from rocker panel to road

FRONT	See Note 2	REAR
9.25 ins.		9.25 ins.
234.9 mm.		234.9 mm.



4. Overall length of the car	397.0	cm.	156.6.	inches		
5. Overall width of the car	160.8	cm.	63	inches ± 1.0 in		
6. Overall height of the car	1320.4	cm.	52.0	inches		
7. Capacity of fuel tank (reserve included)	40.9	ltrs.	10.6	gall. U.S.	9	gall. Imp.
8. Seating Capacity.	4					
9. Weight. Total weight of the car with normal equipment, water, oil, and spare wheel but without fuel or repair tools :	744	kg.	1640	lbs.	14.65	cwts.

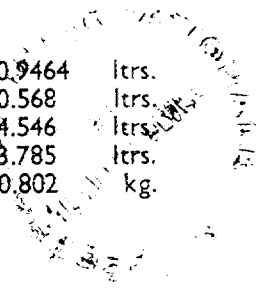
NOTE 2.

Differences in track caused by the use of other wheels with different rim widths must be stated when recognition is requested for the wheels concerned. Specify ground clearance in relation to the track and give drawing of two easily recognisable points at front and rear at which measurements are taken. These ground clearance dimensions are only for information when checking the track and can in no way affect the eligibility of the car.

NOTE 3.

CONVERSION TABLE

1 inch/pouce	— 2.54	cm.	1 quart US	— 0.9464	ltrs.
1 foot/pied	— 30.4794	cm.	1 pint (pt)	— 0.568	ltrs.
1 sq. inch/pouce carre	— 6.452	cm. ²	1 gallon Imp.	— 4.546	ltrs.
1 cubic inch/pouce cube	— 16.387	cm. ³	1 gallon US	— 3.785	ltrs.
1 pound/livre (lb)	— 453.593	gr.	1 hundred weight (cwt.)	— 50.802	kg.



Make **FORD**

Model **ESCORT TWINGAM**

F.I.A. Rec. No. **1524**

CHASSIS AND COACHWORK (Photographs A, B and C)

- 20. Chassis/body construction: ~~separate~~ unitary construction
- 21. Unitary construction, material(s) **STEEL**
- 22. Separate construction, Material(s) of chassis **STEEL**
- 23. Material(s) of coachwork **STEEL**
- 24. Number of doors **2** Material(s) **STEEL**
- 25. Material(s) of bonnet **STEEL**
- 26. Material(s) of boot lid **STEEL**
- 27. Material(s) of rear-window **TOUGHENED GLASS**
- 28. Material(s) of windscreen **TOUGHENED OR LAMINATED GLASS**
- 29. Material(s) of front-door windows **TOUGHENED GLASS**
- 30. Material(s) of rear-door windows **N/A**
- 31. Sliding system of door windows **ROTATING HANDLE**
- 32. Material(s) of rear-quarter light **TOUGHENED GLASS**

ACCESSORIES AND UPHOLSTERY

- 38. Interior heating : ~~YES~~ ~~NO~~ **OPTIONAL**
- 39. Air conditioning : ~~YES~~ no
- 40. Ventilation : yes — no ~~XXXX~~
- 41. Front seats, type of seat and upholstery **PVC**
- 42. Weight of front seat(s), complete with supports and rails, out of the car :

	6.45	kg.	14	lbs.
--	------	-----	----	------
- 43. Rear seats, type of seat and upholstery **PVC**
- 44. Front bumper, material(s) **steel** Weight **.59** each **kg.** **1.3** each **lbs.**
- 45. Rear bumper, material(s) **steel** Weight **2.5** **kg.** **5.5** **lbs.**

WHEELS

- 50. Type **PRESSED STEEL DISC 'J' RIM SECTION**
- 51. Weight (per wheel, without tyre) **5.94** **kg.** **13** **lbs. 2oz.**
- 52. Method of attachment **4 TAPER NUT FIXING**
- 53. Rim diameter **330** mm. **13.0** ins. 54. Rim width **139.7** mm. **5.50** ins.

STEERING

- 60. Type **RACK & PINION**
- 61. Servo-assistance : ~~YES~~ no
- 62. Number of turns of steering wheel from lock to lock **2.7**
- 63. In case of servo-assistance **N/A**



Make **FORD**

Model **ESCORT TWINGAM**

F.I.A. Rec. No. **1524**

SUSPENSION

- 70. Front suspension (photograph D), type **INDEPENDENT MCPHERSON STRUT**
- 71. Type of spring **COIL**
- 72. Stabiliser (if fitted) **INTEGRAL WITH LOWER ARMS**
- 73. Number of shock absorbers **2** 74. Type **INTEGRAL SUSPENSION LEG, TELESCOPIC DOUBLE ACTING**
- 78. Rear suspension (photograph E), type **LIVE AXLE**
- 79. Type of spring **MULTI-LEAF SEMI-ELLIPTIC**
- 80. Stabiliser (if fitted) **TRAILING LINKS**
- 81. Number of shock absorbers **2** 82. Type **TELESCOPIC DOUBLE ACTING**

BRAKES (photographs F and G)

- 90. Method of operation **HYDRAULIC**
- 91. Servo-assistance (if fitted), type **HYDRAULIC VACUUM**
- 92. Number of hydraulic master cylinders **SINGLE**
- 93. Number of cylinders per wheel **2** **FRONT** **1** **REAR**
- 94. Bore of wheel cylinder(s) **54.0** mm. **2.126** inches **19.05**mm. **0.75** inches

Drum Brakes

- 95. Inside diameter mm. inches **228.6** mm. **9.00** inches
- 96. Length of brake linings mm. inches **218.9** mm. **8.62** inches
- 97. Width of brake linings mm. inches **44.45** mm. **1.75** inches
- 98. Number of shoes per brake **2**
- 99. Total area per brake mm.² sq. in. **1946.4**mm.² **30.17**q. in.

Disc Brakes

- 100. Outside diameter **244.0** mm. **9.6** inches mm. inches
- 101. Thickness of disc **12.7** mm. **.5** inches mm. inches
- 102. Length of brake linings **76.2** mm. **3.0** inches mm. inches
- 103. Width of brake linings **53.34** mm. **2.1** inches mm. inches
- 104. Number of pads per brake **2**
- 105. Total area per brake **6670** mm.² **10.34** sq. in. mm.² sq. in.



ENGINE (photographs J and K)

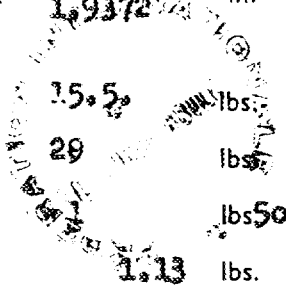
- 130. Cycle **FOUR STROKE**
- 131. Number of cylinders **4**
- 132. Cylinder Arrangement **IN LINE**
- 133. Bore **82.55** mm. **3.25** in.
- 134. Stroke **72.75** mm. **2.875** in.
- 135. Capacity per cylinder **389.0** cm.³ **23.8** cu. in.
- 136. Total cylinder capacity **1558** cm.³ **95.2** cu. in.
- 137. Material(s) of cylinder block **CAST IRON**
- 138. Material(s) of sleeves (if fitted) **NONE**
- 139. Cylinder head, material(s) **ALUMINIUM ALLOY**
- Number fitted **1**
- 140. Number of inlet ports **4**
- 141. Number of exhaust ports **4**
- 142. Compression ratio **9.8:1 ± .3**
- 143. Volume of one combustion chamber **43.3 ± 2.5** cm.³ **1.704** cu. in.
- 144. Piston, material **ALUMINIUM ALLOY**
- 145. Number of rings **3**
- 146. Distance from gudgeon pin centre line to highest point of piston crown **39.5** mm. **1.551** in.
- 147. Crankshaft: moulded/~~cast~~
- 148. Type of crankshaft: integral/**CAST WITH BALANCE WEIGHTS**
- 149. Number of crankshaft main bearings **5**
- 150. Material of bearing cap **CAST IRON**
- 151. System of lubrication: ~~dry sump~~ oil in sump
- 152. Capacity, lubricant **4.6** ltrs. **8** pts. **4.7** quarts U.S.
- 153. Oil cooler: yes/~~no~~
- 154. Method of engine cooling **WATER AND FAN**
- 155. Capacity of cooling system **5.81** ltrs. **10.5** pts. **6.3** quarts U.S.
- 156. Cooling fan (if fitted) dia. **27.94** cm. **11.0** in.
- 157. Number of blades of cooling fan **1 or 2**

Bearings

- 158. Crankshaft main, type **STEEL BACKED COPPER LEAD OR LEAD BRONZE** dia. **53.993** m.m. **2.125** in.
- 159. Connecting rod big end, type **ALUMINIUM TIN COPPER COPPER LEAD OR BRONZE** dia. **49.205** m.m. **1.9372** in.

Weights

- 160. Flywheel (clean) **7.0** kg. **15.5** lbs.
- 161. Flywheel with clutch (all turning parts) **13.0** kg. **29** lbs.
- 162. Crankshaft **11.0** kg. **24.2** lbs.
- 163. Connecting rod **.590** kg. **1.3** lbs.
- 164. Piston with rings and pin **.5135** kg. **1.13** lbs.



Make **FORD**

Model **ESCORT TWINGAN**

F.I.A. Rec. No. **1524**

FOUR STROKE ENGINES

170. Number of camshafts **3** 171. Location **2 ins. cylinder head**
172. Type of camshaft drive **chain** **1 in. block (idler)**
173. Type of valve operation **OHC and tappets**

INLET (see page 4)*

180. Material(s) of inlet manifold **ALUMINIUM ALLOY**
181. Diameter of valves **39.12** mm. **1.540** ins.
182. Max. valve lift **8.89** mm. **.350** in. 183. Number of valve springs **2**
184. Type of spring **Coil** 185. Number of valves per cylinder **1**
186. Tappet clearance for checking timing (cold) **0.254** mm. **0.010** ins.
187. Valves open at (with tolerance for tappet clearance indicated) **26 deg. B.T.D.C.**
188. Valves close at (with tolerance for tappet clearance indicated) **66 deg. A.B.D.C.**
189. Air filter, type **Paper element**

EXHAUST (see page 4)*

195. Material(s) of exhaust manifold **steel tube**
196. Diameter of valves **33.66** mm. **1.325** ins.
197. Max. valve lift **8.89** mm. **0.350** in. 198. Number of valve springs **2**
199. Type of spring **Coil** 200. Number of valves per cylinder **1**
201. Tappet clearance for checking timing (cold) **.254** mm. **0.010** ins.
202. Valves open at (with tolerance for tappet clearance indicated) **66 deg. B.B.D.C.**
203. Valves close at (with tolerance for tappet clearance indicated) **26 deg. A.T.D.C.**

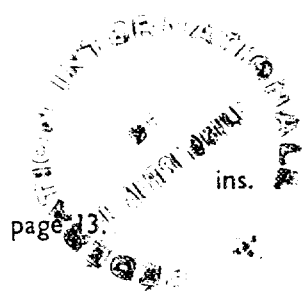
CARBURETION (photograph N)

210. Number of carburetors fitted **2** 211. Type **Horizontal**
212. Make **Weber** 213. Model **40 DCOE**
214. Number of mixture passages per carburetor **2**
215. Flange hole diameter of exit port(s) of carburetor **40** mm. **1.575** ins.
216. Minimum diameter of venturi/minimum diam., with piston at maximum height (example: SU)
30-33 mm. **1.18-1.30** ins.

INJECTION (if fitted)

220. Make of pump 221. Number of plungers
222. Model or type of pump 223. Total number of injectors
224. Location of injectors
225. Minimum diameter of inlet pipe mm. ins.

* For additional information concerning two-stroke engines and super-charged engines, see page 13.

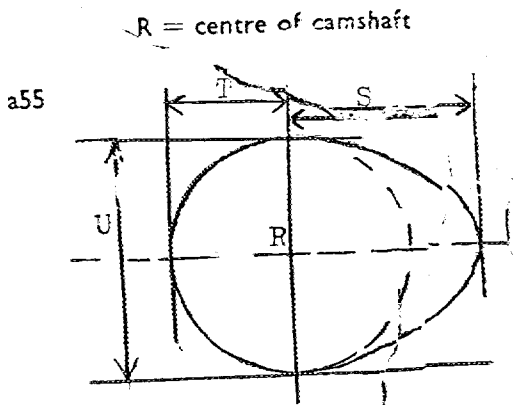


ENGINE ACCESSORIES

- 230. Fuel pump : mechanical ~~and~~ /or electrical
- 231. No. fitted **1**
- 232. Type of ignition system **COIL AND BATTERY**
- 233. No. of distributors **1**
- 234. No. of ignition coils **1**
- 235. No. of spark plugs per cylinder **1**
- 236. Generator, type : dynamo ~~alternator~~ number fitted **1**
- 237. Method of drive **BELT**
- 238. Voltage of generator **12** volts
- 239. Battery, number **1**
- 240. Location **BOOT COMPARTMENT**
- 241. Voltage of battery **12** volts

ENGINE AND CAR PERFORMANCES (as declared by manufacturer in catalogue)

- 250. Max. engine output **115** (type of horsepower: **HIP**) at **6,000** r.p.m.
- 251. Max. r.p.m. **6500** output at that figure **105 HIP**
- 252. Max. torque **106 lbs/ft** at **4,500** r.p.m.
- 253. Max. speed of the car **NOT DECLARED BY MANUFACTURER IN CATALOGUE** km./hour miles/hour



<u>Inlet cam</u>			
S =	24.10	mm.	.950 inches
T =	15.22	mm.	.600 inches
U =	30.50	mm.	1.20 inches
<u>Exhaust cam</u>			
S =	24.10	mm.	.950 inches
T =	15.22	mm.	.600 inches
U =	30.50	mm.	1.20 inches

Make **FORD**

Model **ESCORT TWINCAM**

F.I.A. Rec. No. **1524**

DRIVE TRAIN

CLUTCH

- 260. Type of clutch **DIAPHRAGM**
- 261. No. of plates **1**
- 262. Dia. of clutch plates **20.32** cm. **8.00** ins.
- 263. Dia. of linings, inside **14.605** cm. **5.75** ins.
- outside **20.32** cm. **8.00** ins.
- 264. Method of operating clutch **HYDRAULIC**

GEAR BOX (photograph H)

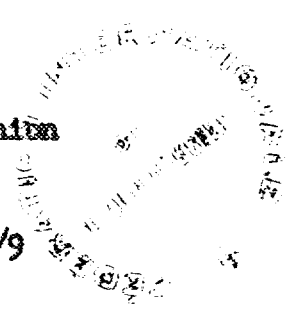
- 270. Manual type, make **FORD** Method of operation **MANUAL**
- 271. No. of gear-box ratios forward **4** 272. Synchronized forward ratios **4**
- 273. Location of gear-shift **REMOTE CENTRAL FLOOR CONTROL**
- 274. Automatic, make **N/A** type **N/A**
- 275. No. of forward ratios **N/A** 276. Location of gear shift **N/A**

277.	Manual		Automatic		Ratio	Alternative manual/automatic	
	Ratio	No. teeth	Ratio	No. teeth		No. teeth	Ratio
1	2.97	$\frac{30 \times 32}{19 \times 17}$			2.296	$\frac{28 \times 31}{21 \times 18}$	
2	2.01	$\frac{30 \times 28}{19 \times 22}$			1.697	$\frac{28 \times 28}{21 \times 22}$	
3	1.39	$\frac{30 \times 23}{19 \times 22}$			1.28	$\frac{28 \times 24}{21 \times 25}$	
4							
5	1.0	Direct			1.0	Direct	
6							
reverse	3.324	40x22x19			2.607	$\frac{40 \times 22}{19}$	

- 278. Overdrive, type **N/A**
- 279. Forward gears on which overdrive can be selected **N/A**
- 280. Overdrive ratio **N/A**

FINAL DRIVE

- 290. Type of final drive **Semi Floating hypoid** 291. Type of differential **Two pinion**
- 292. Type of limited slip differential (if fitted) **Salisbury four pinion**
- 293. Final drive ratio **3.7:1 or 4.44:1** Number of teeth **34/9 or 40/9**



FORD

ESCORT TWINGAM

Make

Model

F.I.A. Rec. No.

1524

IMPORTANT—The conformity of the car with the following items of the present recognition form is to be disregarded during the scrutineering, when the vehicle has been entered in group 2 (Touring cars) or 3 (Grand Touring cars) : 41, 72, 80, 91, 142, 143, 144, 145, 146, 153, 156, 157, 160, 161, 162, 163, 164, 182, 186, 187, 188, 189, 201, 202, 203, 212, 213, 215, 216 222, 225, 230, 250, 251, 252, 253, 255 photographs I, M and N and page 4.

During the scrutineering of cars entered in group 4 (Sportscars) only the following items of the present recognition form are to be taken into consideration : 1, 2, 3, 9, 20, 21, 22, 23, 24, 25, 26, 70, 71, 78, 79, 90, 130, 131, 132, 133, 134, 135, 136, 137, 138, 139, 140, 141, 147, 148, 149, 150, 158, 159, 170, 171, 172, 173, 185, 200, 270, 271, 274, 275, 290, 291, 292 and photographs A, B, D, E, F, G, H, J, K and O.

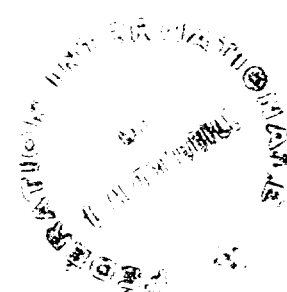
The vehicle described in this form has been subject to the following amendments :

on.....	19.....	rec. no.....	List.....	on.....	19.....	rec. no.....	List.....
on.....	19.....	rec. no.....	List.....	on.....	19.....	rec. no.....	List.....
on.....	19.....	rec. no.....	List.....	on.....	19.....	rec. no.....	List.....
on.....	19.....	rec. no.....	List.....	on.....	19.....	rec. no.....	List.....
on.....	19.....	rec. no.....	List.....	on.....	19.....	rec. no.....	List.....

Optional equipment affecting preceding information. This to be stated together with reference number.

MANUFACTURING TOLERANCES

1. For all machined surfaces allow 0.07%
2. For all non-machined surfaces allow 2%
3. For weights of all part-machined parts allow 2.5%
4. For weights of all completely machined parts allow 1.25%





MOTOR SPORT DIVISION
 The Royal Automobile Club,
 31 Belgrave Square, London, S.W.1

Manufacturer FORD
 Model ESCORT TWIN CAM
 F.I.A. Recognition No. 1524
 Amendment No. 1/11V

Amendment to Form of Recognition

FEDERATION INTERNATIONALE DE L'AUTOMOBILE

No.	Reference No.	<u>VARIANT</u>
1	6J Electron wheels 13" DIA x 6" Rim Width. 10 lbs Weight. Part No: CD 1000/3 Track increased by 1.5 in.	
2	Pressed steel disc wheels 13" DIA x 5.5 Rim Width Weight 13.5 lbs. 6.00 Kg. Part No: 3020E/1007A	
3	Underbody shield. Part No: CD 3024E 6643	

Maximum width 29"
 Overall length 24"
 Overall height 10"



Stamp of F.I.A./R.A.C.

Date amendment is valid from 1st May 1968
1st 6/8/68



MOTOR SPORT DIVISION
 The Royal Automobile Club,
 31 Belgrave Square, London, S.W.1

Manufacturer FORD

Model ESCORT TWIN CAM

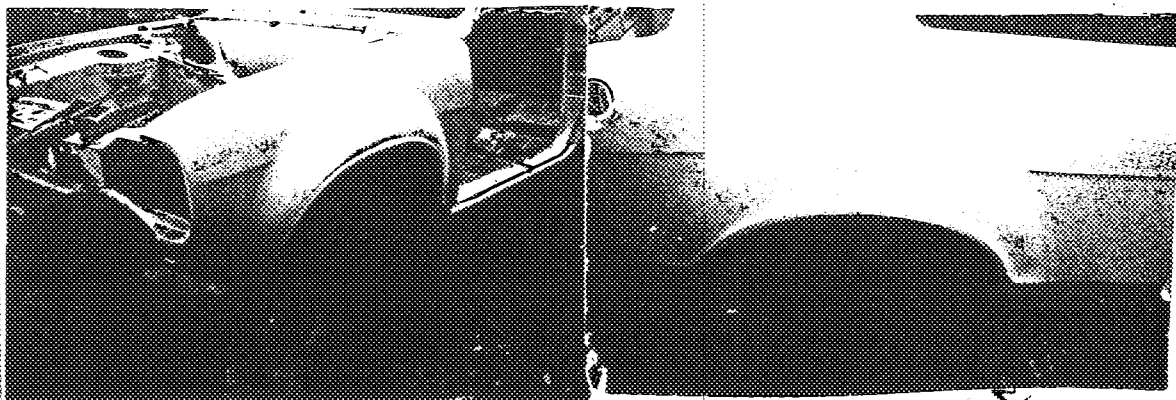
F.I.A. Recognition No. 1524

Amendment No. 2/20

Amendment to Form of Recognition

FEDERATION INTERNATIONALE DE L'AUTOMOBILE

No.	Reference No.
4	<p style="text-align: center;"><u>VARIANTS</u></p> <p>Heavy duty front suspension CD 3024B-3H033 CD 3024B-3H650 CD 3024B-9419</p>
5	<p>Alternator bracket. Part No: CD 10154</p>
6	<p>Ford Limited Slip Differential unit. Part No: CD2927E 4204A</p>
7	<p>Engine stabilizer kit. Part No: CD 37/3/1-48</p>
8	<p>Wheel arch extension kit. Part No: CD 111F When fitted overall body width is increased by 5 cms. each side.</p>



Date amendment is valid from

14 May 1968
cut 19 68/6

Hubert [Signature]
 Stamp of F.I.A./R.A.C.



MOTOR SPORT DIVISION
The Royal Automobile Club,
31 Belgrave Square, London, S.W.1

Manufacturer FORD

Model ESCORT TWIN CAM

F.I.A. Recognition No 1524

Amendment No. 3/3V

Amendment to Form of Recognition

FEDERATION INTERNATIONALE DE L'AUTOMOBILE

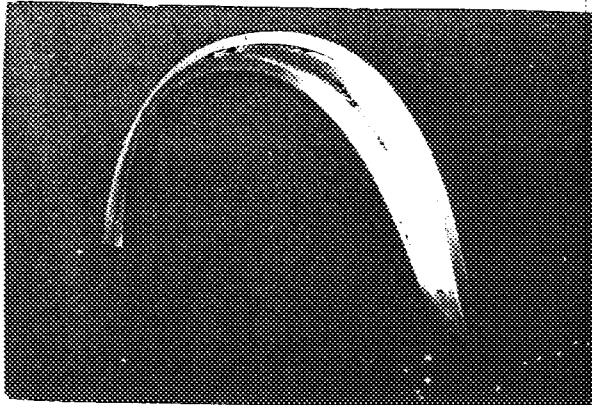
No.

Reference No.

VARIANT

9

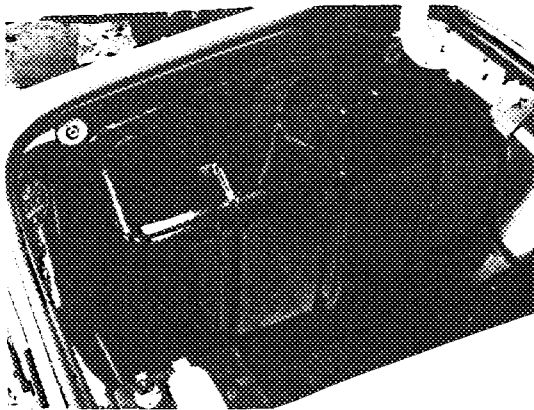
Alternative front wing extension kit. Part No: CD 112F



When fitted overall body width is increased by 5 cms. each side.

10

Auxiliary Tank Kit. Total capacity with reserve is 90 litres.
Part No: CD3024E-9002



Date amendment is valid from...

1st May 1968
List 1968/6

(Stamp of F.I.A./R.A.C.)



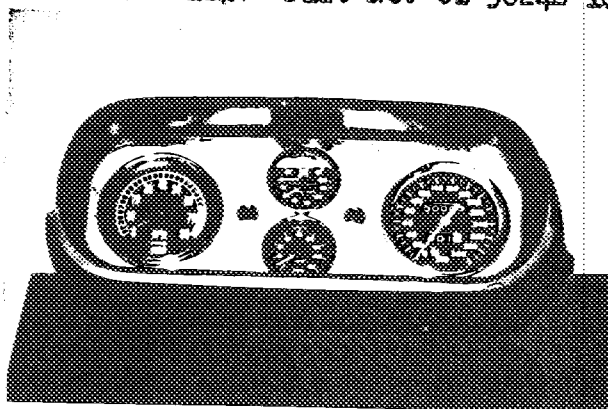
MOTOR SPORT DIVISION
The Royal Automobile Club,
31 Belgrave Square, London, S.W.1

Manufacturer FORD
Model ESCORT TWINCAM
F.I.A. Recognition No. 1524
Amendment No. 4 / 14U

Amendment to Form of Recognition

FEDERATION INTERNATIONALE DE L'AUTOMOBILE

No. Reference No. VARIANT
11 Alternative Dash. Part No: CD 3024E 10849



12 Gear Box. Part No: GHEF 5 S

1.	2.84	$\frac{25}{17} \times \frac{29}{15}$
2.	1.78	$\frac{25}{17} \times \frac{23}{19}$
3.	1.47	$\frac{25}{17} \times \frac{21}{21}$
4.	1.21	$\frac{25}{17} \times \frac{19}{23}$
5.	1.0	Direct
Reverse	1.74	$\frac{25}{17} \times \frac{13}{15} \times \frac{30}{22}$

Date amendment is valid from 1st May 1968
1st 1968/6

Handwritten signature
Stamp of F.I.A./R.A.C.



MOTOR SPORT DIVISION
The Royal Automobile Club,
31 Belgrave Square, London, S.W.1

Manufacturer **FORD**
TWINCAM
Model _____
F.I.A. Recognition No. **1524**
Amendment No. **5/5V**

Amendment to Form of Recognition

FEDERATION INTERNATIONALE DE L'AUTOMOBILE

No.	Reference No.	<u>VARIANT</u>		
13	Alternative axle ratio	4.1:1	33/8	
14	Alternative axle ratio	4.7:1	33/7	
15	Alternative axle ratio	4.9:1	34/7	

Date amendment is valid from **1st May 1968.**
List 1968/6

[Signature]
Stamp of F.I.A./R.A.C.



MOTOR SPORT DIVISION
The Royal Automobile Club,
31 Belgrave Square, London, S.W.1

Manufacturer FORD

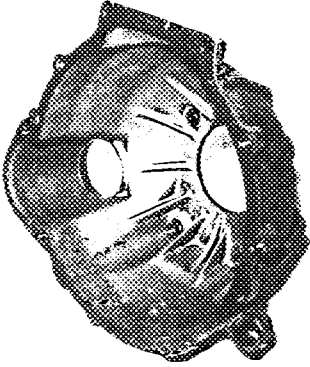
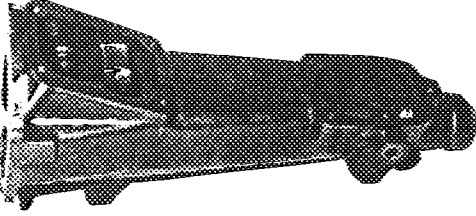
Model ESCORT TWINCAM

F.I.A. Recognition No. 1524

Amendment No. 6/6V

Amendment to Form of Recognition

FEDERATION INTERNATIONALE DE L'AUTOMOBILE

No.	Reference No.
20	<p style="text-align: center;"><u>VARIANT</u></p> 
21	
22	<p>Con Rod (Alternative Supplier) Weight 635 grams Part No: B2448/105/118R.</p>

Competition Bellhousing
Part No: CDM105E 7505

Competition Extension
Part No: CDM 2821E-7A039

Date amendment is valid from

1st May 1968.
Cist 1968/6

Hubert [Signature]
Stamp of F.I.A./R.A.C.



MOTOR SPORT DIVISION
The Royal Automobile Club,
31 Belgrave Square, London, S.W.1

Manufacturer FORD

Model ESCORT TWINCAM

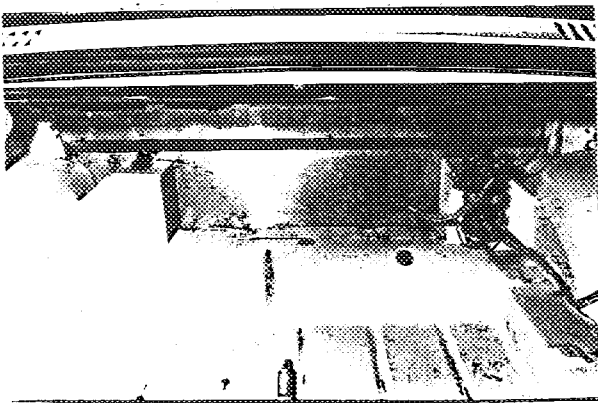
F.I.A. Recognition No. 1524

Amendment No. 7/7V

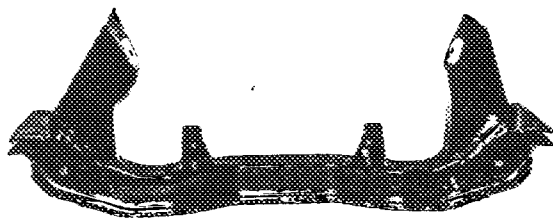
Amendment to Form of Recognition

FEDERATION INTERNATIONALE DE L'AUTOMOBILE

No.	Reference No.
	<u>VARIANT</u>
23	Alternative Heavy Duty rear shock absorber position



24	Heavy Duty Crossmember. Part No: CD 3024E-5019
----	--



Date amendment is valid from 1st May 1968
1968/6





MOTOR SPORT DIVISION
The Royal Automobile Club,
31 Belgrave Square, London, S.W.1

Manufacturer FORD

Model ESCORT TWINCAM

F.I.A. Recognition No. 1524

Amendment No. 8/8U

Amendment to Form of Recognition

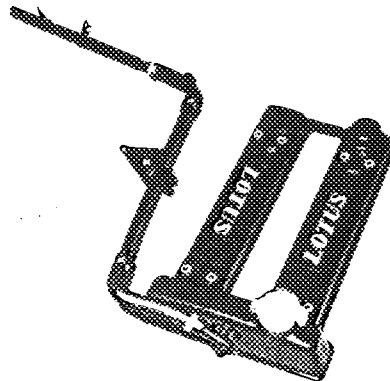
FEDERATION INTERNATIONALE DE L'AUTOMOBILE

No.

Reference No.

25

Alternative Cam cover. Part Nos CD RC 25P



Date amendment is valid from

1st May 1968.
Dist 1968/6

[Signature]
Stamp of F.I.A./R.A.C.



MOTOR SPORT DIVISION
The Royal Automobile Club,
31 Belgrave Square, London, S.W.1

Manufacturer FORD


Model ESCORT TWINGAM

F.I.A. Recognition No. 1524

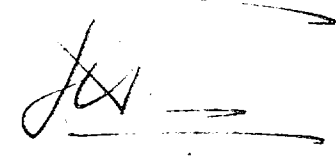
Amendment No. ~~11/11E~~ 9/9U

Amendment to Form of Recognition

FEDERATION INTERNATIONALE DE L'AUTOMOBILE

No.	Reference No.	
32	<u>VARIANT</u>	<p>Half shaft and bearings. Alternative supplier. Fitted with torque vibration damper sleeve.</p> <p>Part No: CD 2925E-5F-43-L.</p>
33		<p>Competitions Dash Panel</p> <p>Part No: CD 3027E-70045K</p>
34	Alternative axle ratio 5.1:1	7 x 36.

Date amendment is valid from 1st Nov. 1968
with 68/10



Stamp of F.I.A./R.A.C.



MOTOR SPORT DIVISION
The Royal Automobile Club,
31 Belgrave Square, London, S.W.1

Manufacturer FORD

Model ESCORT TWINCAM

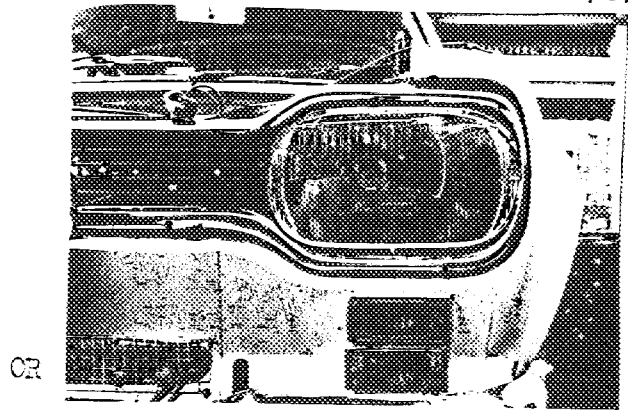
F.I.A. Recognition No. 1524

Amendment No. ~~127~~ 10/10 V

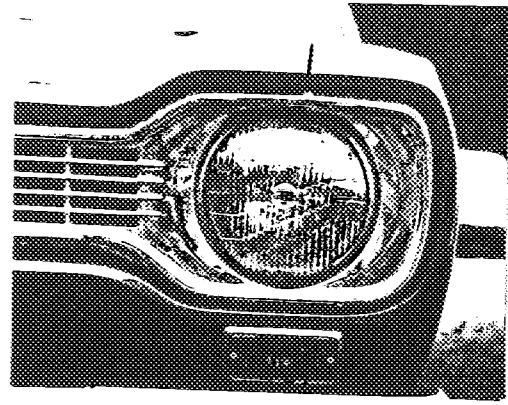
Amendment to Form of Recognition

FEDERATION INTERNATIONALE DE L'AUTOMOBILE

No.	Reference No.	
35	<u>VARIANT</u> Alternative Headlamp pattern necessitating panel, holder and grille changes. <u>[OVERSEAS LIGHTING REGULATIONS]</u>	



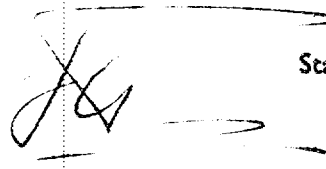
Lamp lens size 11.5 ins. x 6 ins.
302.1 mm. x 152.4 mm



Lamp lens size 7 ins. Dia.
177.6 mm. Dia.

NOTE : Sealed beam dual filament
or dual bulb depending on
specification.

Date amendment is valid from 1st Nov. 1968
List 1968/10


Stamp of F.I.A./R.A.C.



MOTOR SPORT DIVISION
The Royal Automobile Club,
31 Belgrave Square, London, S.W.1

Manufacturer FORD

Model ESCORT TWINGAM

F.I.A. Recognition No. 1924

Amendment No. ~~13/13~~ 11/111 ✓

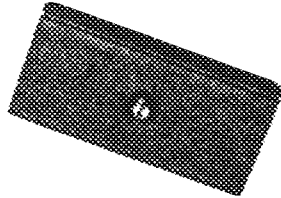
Amendment to Form of Recognition

FEDERATION INTERNATIONALE DE L'AUTOMOBILE

No.

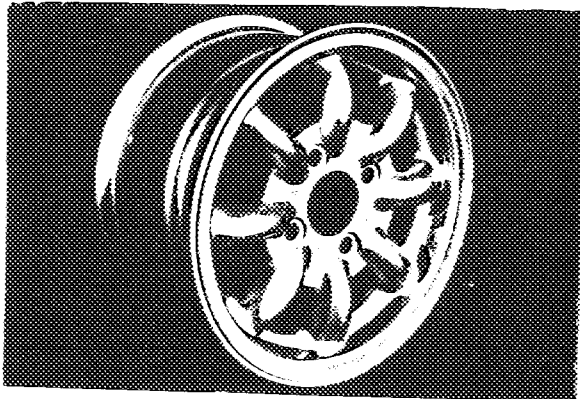
Reference No.

NOTE



A spacer block is fitted between axle and spring, depending upon territory specification.

Reference variant No. 23 amendment 7/7V.
When alternative heavy duty rear shock absorber position is specified the position and style of the radius arms is changed.



Group 11 Variant.

7J Electron Wheels.

13" Diameter.

7" Rim width.

Weight 10.1. lbs.

Track increased by 1.75"

Part No:
CD 1000/44.

J&A

Date amendment is valid from 1st Nov. 1968
List 1968/10

Stamp of F.I.A./R.A.C.



MOTOR SPORT DIVISION
The Royal Automobile Club,
31 Belgrave Square, London, S.W.1

Manufacturer FORD

Model ESCORT TWINCAM

F.I.A. Recognition No. 1524

Amendment No. 12/12 U

Amendment to Form of Recognition

FEDERATION INTERNATIONALE DE L'AUTOMOBILE

No.

Reference No.

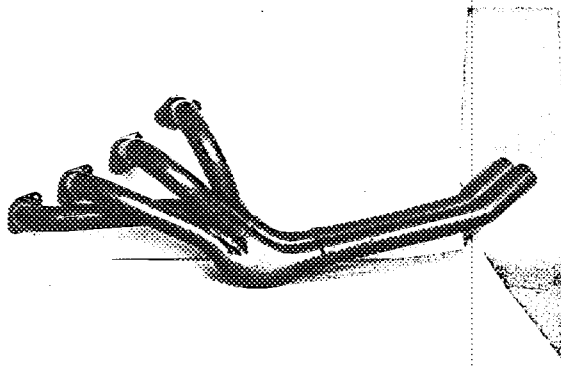
VARIANT

PLASTIC WINDOW (SIDE AND REAR) KIT.

Part No: 1000/17

HEAVY DUTY EXHAUST MANIFOLD

Part No: CO 95 992



outlet O.D. 1.75"
inlet 1.0. 1.50"

Date amendment is valid from

1st Jan. 1969
with 1969/1

Stamp of F.I.A./R.A.C.



MOTOR SPORT DIVISION
The Royal Automobile Club,
31 Belgrave Square, London, S.W.1

Manufacturer FORD
Model ESCORT TWINCAM
F.I.A. Recognition No. 1524
Amendment No. 13 / 13 U

Amendment to Form of Recognition

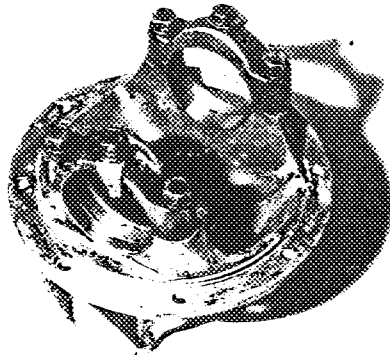
FEDERATION INTERNATIONALE DE L'AUTOMOBILE

No. Reference No.

VARIANTE

ALTERNATIVE DIFFERENTIAL HOUSING

Part No: CDM 105E-4017



ALTERNATIVE AXLE RATIO

5.3:1 37/7

Date amendment is valid from

1st Jan. 1967
next 1967/1

Stamp of F.I.A./R.A.C.



MOTOR SPORT DIVISION
The Royal Automobile Club,
31 Belgrave Square, London, S.W.1

Manufacturer FORD

Model ESCORT TWINCAM

F.I.A. Recognition No. 1524

Amendment No. 14/14 ✓

Amendment to Form of Recognition

FEDERATION INTERNATIONALE DE L'AUTOMOBILE

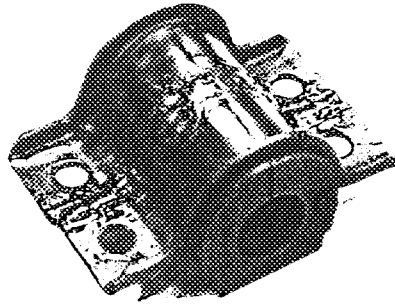
No.

Reference No.

NOTE

1

Reference Section 72 stabilizer mounting bracket changed in production as shown:-



2

Reference section 290 - 293 Final Drive. A one or two piece propellor shaft now fitted in production.

Date amendment is valid from 1st Jun. 1961
inst 17/6/61

Stamp of F.I.A./R.A.C.



MOTOR SPORT DIVISION
The Royal Automobile Club,
31 Belgrave Square, London, S.W.1

Manufacturer FORD
Model ESCORT TWINCAM
F.I.A. Recognition No. 1524/15/15V
Amendment No. 15

Amendment to Form of Recognition

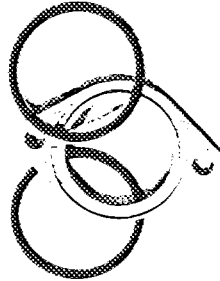
FEDERATION INTERNATIONALE DE L'AUTOMOBILE

No.

Reference No.

VARIANT

NOTE - Carburettor O-Ring Holder Flexible Joint - Part No: 3020E 9A589A
fitted between Carburettors and Head.



Date amendment is valid from 4/4/1968

liste 68/2

Stamp of F.I.A./R.A.C.



MOTOR SPORT DIVISION
The Royal Automobile Club,
31 Belgrave Square, London, S.W.1

Manufacturer FORD
Model ESCORT TWINCAM
F.I.A. Recognition No. 1524 / 16 / 16U
Amendment No. 16

Amendment to Form of Recognition

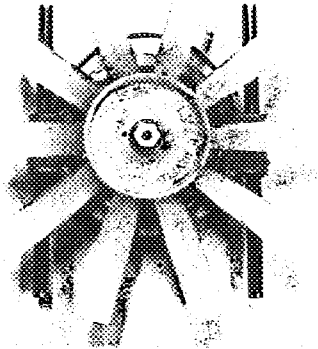
FEDERATION INTERNATIONALE DE L'AUTOMOBILE

No.

Reference No.

VARIANT

ELECTRIC FAN

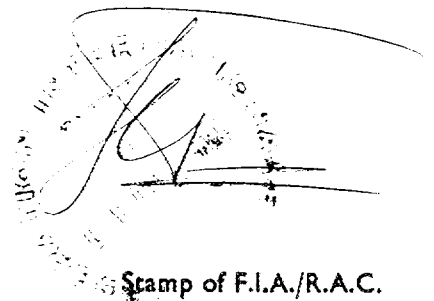


ALTERNATIVE AXLE RATIO

5.5:1 7/39

Date amendment is valid from 1/4/1969

liste 68/2





MOTOR SPORT DIVISION
The Royal Automobile Club,
31 Belgrave Square, London, S.W.1

Manufacturer FORD

Model ESCORT TWINCAM

F.I.A. Recognition No. 1524/17/17V

Amendment No. 17

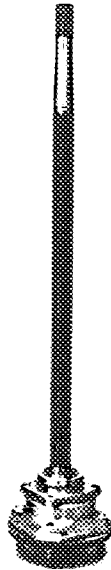
Amendment to Form of Recognition

FEDERATION INTERNATIONALE DE L'AUTOMOBILE

No.

Reference No.

VARIANT



Half Shaft and Bearing
Alternative Supplier
Heavy Duty Specification
bearing and shaft assembly.

Part No: 68 EB 4234

Date amendment is valid from 1/4/1969

liste 69/2

Stamp of F.I.A./R.A.C.



MOTOR SPORT DIVISION
The Royal Automobile Club,
31 Belgrave Square, London, S.W.1

Manufacturer FORD

Model ESCORT TWINCAM

F.I.A. Recognition No. 1524/18/18V

Amendment No. 18

Amendment to Form of Recognition

FEDERATION INTERNATIONALE DE L'AUTOMOBILE

No. Reference No.

NOTE

Reference Amendment No. 4/4V Item 12 - Gearbox Part No: CD HF5S

Production change on tooth combination and therefore ratios.

Now read :

1.	3.048	$\frac{25}{17} \times \frac{29}{14}$
2.	1.78	$\frac{25}{17} \times \frac{23}{19}$
3.	1.47	$\frac{25}{17} \times \frac{21}{21}$
4.	1.21	$\frac{25}{17} \times \frac{19}{23}$
5.	1.0	Direct
	Reverse 2.145	$\frac{15}{30}$

Date amendment is valid from 1/4/1968

liste 08/2

Stamp of F.I.A./R.A.C.



MOTOR SPORT DIVISION
The Royal Automobile Club,
31 Belgrave Square, London, S.W.1

Manufacturer FORD

Model ESCORT TWINCAM

F.I.A. Recognition No. 1524 / 19 / 19V

Amendment No. 19

Amendment to Form of Recognition

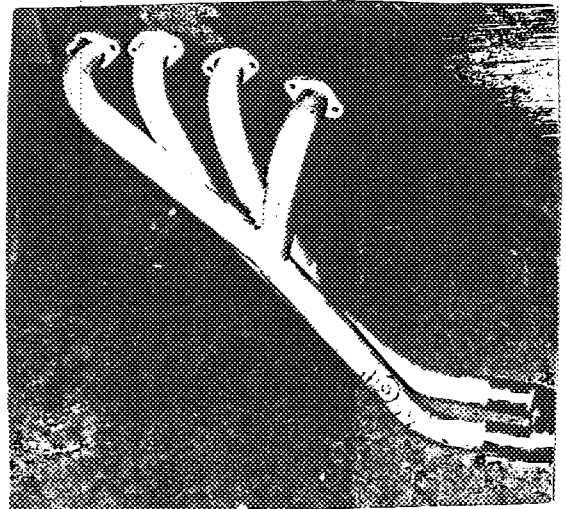
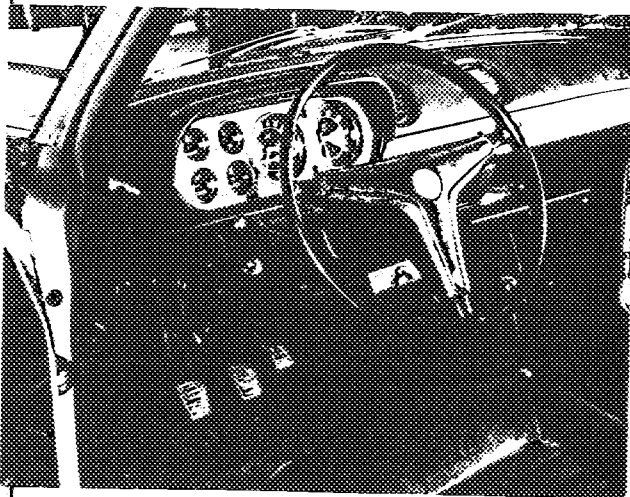
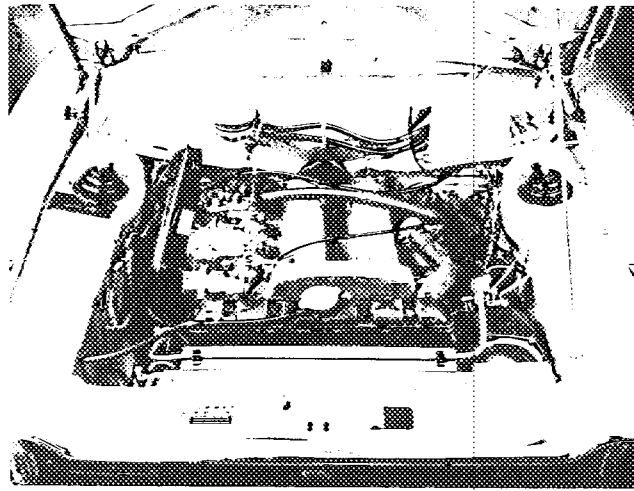
FEDERATION INTERNATIONALE DE L'AUTOMOBILE

No. Reference No.

NOTE

Left-hand drive version of the Escort Twin Cam :

Changes in under-bonnet lay out , interior and exhaust manifold, with same dimensions as right-hand drive unit.



Date amendment is valid from 4/4/1968

List 68/2

Stamp of F.I.A./R.A.C.



MOTOR SPORT DIVISION
The Royal Automobile Club,
31 Belgrave Square, London, S.W.1

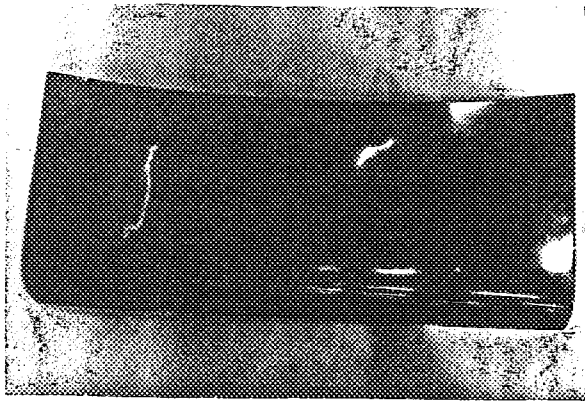
Manufacturer FORD
Model ESCORT TWINGAM
F.I.A. Recognition No. 1524 | 20 | 20v
Amendment No.

Amendment to Form of Recognition

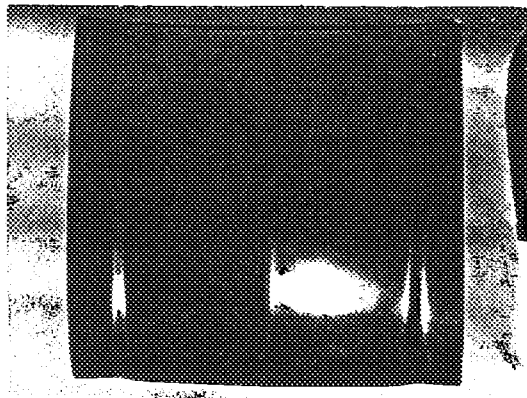
FEDERATION INTERNATIONALE DE L'AUTOMOBILE

No. Reference No. VARIANT

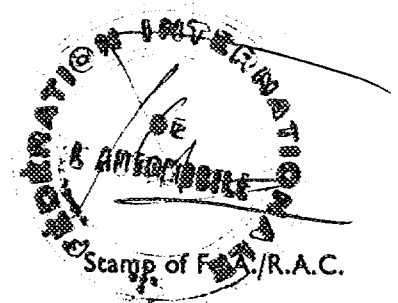
FIBREGLASS BOOT LID Part No: CD 1000/53



FIBREGLASS BONNET Part No: CD 1000/52



Date amendment is valid from 1/5/69
List 69/3





MOTOR SPORT DIVISION
The Royal Automobile Club,
31 Belgrave Square, London, S.W.1

Manufacturer FORD

Model ESCORT TWINCAM

F.I.A. Recognition No. 1524

Amendment No. 21 / 21 V

Amendment to Form of Recognition

FEDERATION INTERNATIONALE DE L'AUTOMOBILE

No. Reference No. VARIANT

ALTERNATIVE REAR AXLE RATIO :

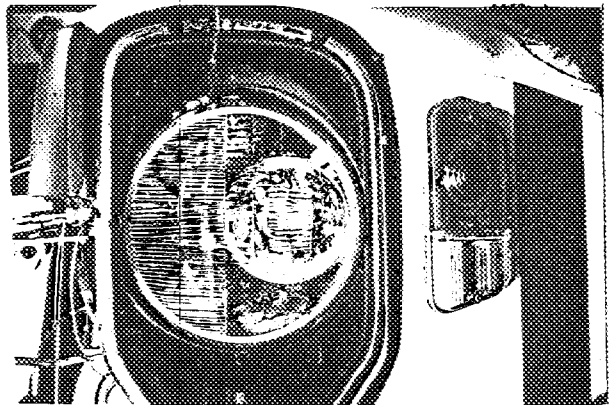
5.7 6/34

6.1 6/37

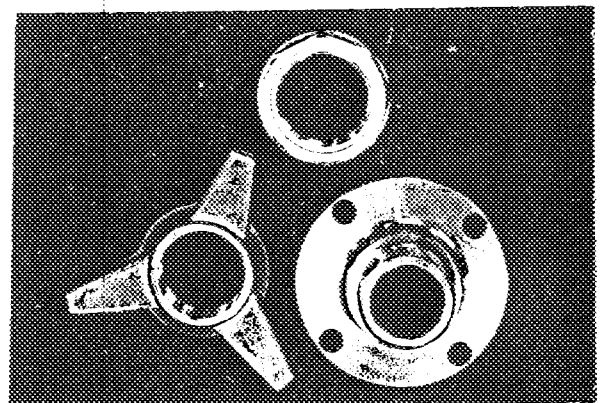
HEAVY DUTY OIL PUMP. Part No: CD 105E 6600 HC.

[Handwritten signature]
F.I.A. / R.A.C.
1969

ALTERNATIVE SIDELIGHT PATTERN.
Export Specification.



ALTERNATIVE WHEEL MOUNTING
CENTRE LOCK NUT.
Part No: CD 1000/73.
Increases track by 0.75 inches.



Date amendment is valid from 1st July 1969

Dist 1969/5

Stamp of F.I.A./R.A.C.



MOTOR SPORT DIVISION
 The Royal Automobile Club,
 31 Belgrave Square, London, S.W.1

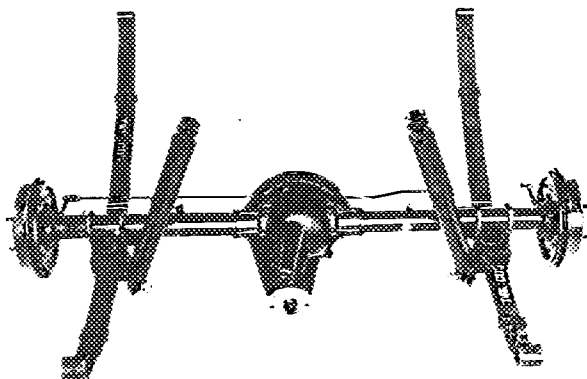
Manufacturer FORD
 Model ESCORT TWINCAM
 F.I.A. Recognition No. 1524
 Amendment No. 22 (22)

Amendment to Form of Recognition

FEDERATION INTERNATIONALE DE L'AUTOMOBILE

No. | Reference No. | NOTE
 ALTERNATIVE AXLE UNIT NOW FITTED IN PRODUCTION.

Final Drive Ratio	3.7	-	10/37
	4.63	-	8/37
	5.14	-	7/36
	5.83	-	6/35

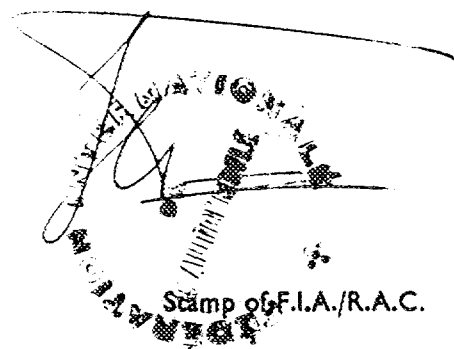


VARIANT

LIMITED SLIP DIFFERENTIAL FOR ABOVE.
 Part No: CD 0635298.

Date amendment is valid from

1st July 1969
with 1969/5





MOTOR SPORT DIVISION
The Royal Automobile Club,
31 Belgrave Square, London, S.W.1

Manufacturer FORD
Model ESCORT TWINCAM
F.I.A. Recognition No. 1524
Amendment No. 23 / 23 U

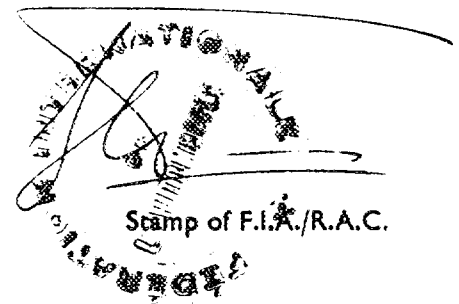
Amendment to Form of Recognition

FEDERATION INTERNATIONALE DE L'AUTOMOBILE

No.	Reference No.
	<u>VARIANT</u>
	FRONT SUSPENSION LAYOUT with Compression Strut and Bracket and Stabilizer Bar. Cast Track Control Arms.
	Part Nos: 3024E 3078-A Track Control Arms
	3024E 3468-C Compression Strut
	3024E 5K492/3 Bracket
	3024E 5482 Stabilizer Bar.

Date amendment is valid from

1st July 1969
until 1969/5





MOTOR SPORT DIVISION
The Royal Automobile Club,
31 Belgrave Square, London, S.W.1

Manufacturer FORD
Model ENCOURAGEMENT
F.I.A. Recognition No. 1524
Amendment No. 26

Amendment to Form of Recognition

FEDERATION INTERNATIONALE DE L'AUTOMOBILE

No. | Reference No.

VARIABLE

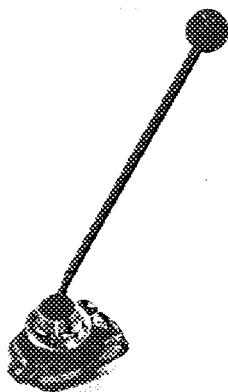
Reference of amendment 27/22V

Alternative final drive ratio

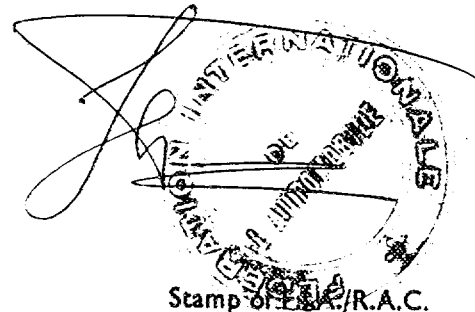
3.69:1	35/9
4.0:1	36/9
4.11:1	37/9
4.37:1	35/8

Alternative gear lever assembly

Part No. 2821B - 1/34
Part No. 2821B - 1/32



Date amendment is valid from _____



Make FORD

Model ESCORT TWINCAM

F.I.A. Rec. No. 1524 /25/1E
70/4

IMPORTANT—The conformity of the car with the following items of the present recognition form is to be disregarded during the scrutineering, when the vehicle has been entered in group 2 (Touring cars) or 3 (Grand Touring cars) : 41, 72, 80, 91, 142, 143, 144, 145, 146, 153, 156, 157, 160, 161, 162, 163, 164, 182, 186, 187, 188, 189, 201, 202, 203, 212, 213, 215, 216 222, 225, 230, 250, 251, 252, 253, 255 photographs I, M and N and page 4.

During the scrutineering of cars entered in group 4 (Sportscars) only the following items of the present recognition form are to be taken into consideration : 1, 2, 3, 9, 20, 21, 22, 23, 24, 25, 26, 70, 71, 78, 79, 90, 130, 131, 132, 133, 134, 135, 136, 137, 138, 139, 140, 141, 147, 148, 149, 150, 158, 159, 170, 171, 172, 173, 185, 200, 270, 271, 274, 275, 290, 291, 292 and photographs A, B, D, E, F, G, H, J, K and O.

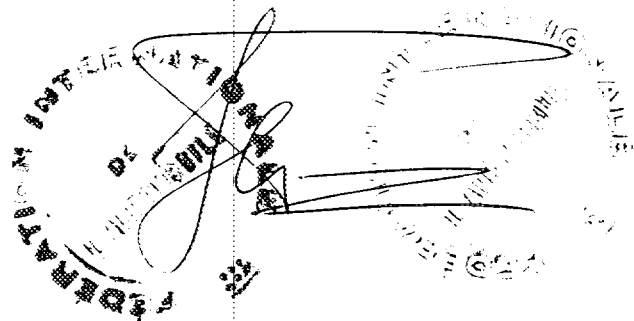
The vehicle described in this form has been subject to the following amendments :

on	19	rec. no.	List	on	19	rec. no.	List
on	19	rec. no.	List	on	19	rec. no.	List
on	19	rec. no.	List	on	19	rec. no.	List
on	19	rec. no.	List	on	19	rec. no.	List
on	19	rec. no.	List	on	19	rec. no.	List

Optional equipment affecting preceding information. This to be stated together with reference number.

MANUFACTURING TOLERANCES

1. For all machined surfaces allow 0.75%
2. For all non-machined surfaces allow 2%
3. For weights of all part-machined parts allow 2.5%
4. For weights of all completely machined parts allow 1.25%





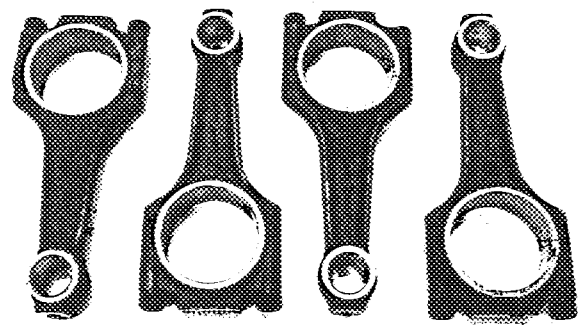
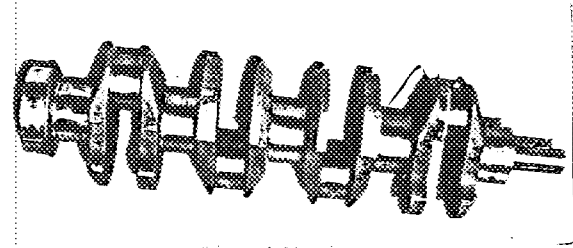
MOTOR SPORT DIVISION
The Royal Automobile Club,
31 Belgrave Square, London, S.W.1

Manufacturer FORD
Model ESCORT TWINCAM
F.I.A. Recognition No. 1524
Amendment No. 26/25 V

Amendment to Form of Recognition

FEDERATION INTERNATIONALE DE L'AUTOMOBILE

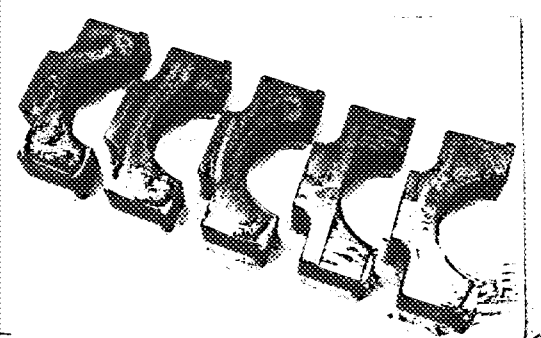
No.	Reference No.
	<u>GRUP II VALVE</u>
	<u>Crankshaft</u> Part No: <u>CD 790/30/1-175</u>
147.	Crankshaft Stamped.
148.	Type of Crankshaft, integral forged with balance weights.
149.	Number of crankshaft main bearings (5) five
162.	Crankshaft weight 14.8.kg. 32.5.lbs.



Steel Main Bearing Caps
Part No: CD 6090/1

150.	Material of bearing caps.....Steel.
------	-------------------------------------

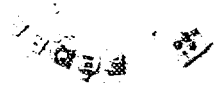
Connecting Rod
Part No: CD 70/1



Date amendment is valid from 1/1/70

[Handwritten Signature]

Stamp of F.I.A./R.A.C.





MOTOR SPORT DIVISION
The Royal Automobile Club,
31 Belgrave Square, London, S.W.1

Manufacturer FORD
Model ESCORT TWINCAM
F.I.A. Recognition No. 1524
Amendment No. 27/26 V

Amendment to Form of Recognition

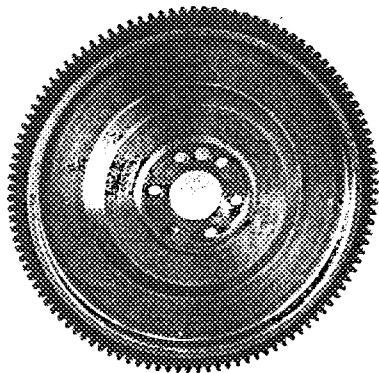
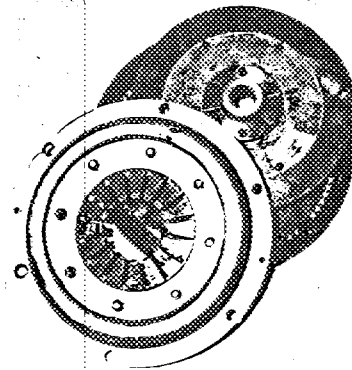
FEDERATION INTERNATIONALE DE L'AUTOMOBILE

No. | Reference No.

GROUP II VARIANT

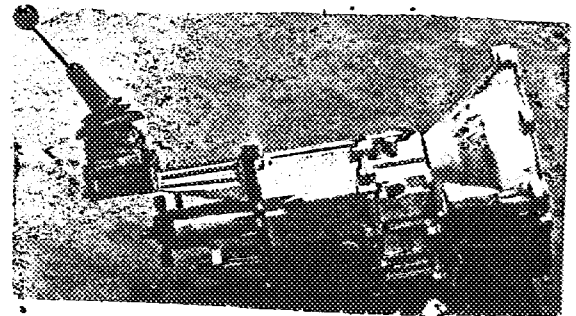
Twin Plate Clutch
Part No: CD 2235C

- 260. Type of clutch ...Diaphragm.
- 261. Number of plates (2) Two.
- 262. Dia. of clutch plates ...7.25 inches.
- 263. Dia. of linings inside...5.25 inches.
outside..7.25 inches.



Steel Flywheel
Part No: CD 70/2

- 160. Weight of flywheel clean ...5.5kgs. 12lbs.



ZF Gearbox 5-speed
Part No: CD 70/4

- 270. Manual type make ZF
- Method of operation...manual.
- 271. Number of gearbox ratios forward (5) five.
- 272. Synchronized forward ratios (5) five.
- 273. Location of gear shift, remote control floor control.
- 278. Overdrive. type. A gear ratio for the 5th position gives overdrive ratio if desired.

Date amendment is valid from 1/1/70

[Handwritten Signature]
Stamp of F.I.A./R.A.C.



MOTOR SPORT DIVISION
The Royal Automobile Club,
31 Belgrave Square, London, S.W.1

Manufacturer FORD
Model ESCORT TWINCAM
F.I.A. Recognition No. 1524
Amendment No. 28 / 27V

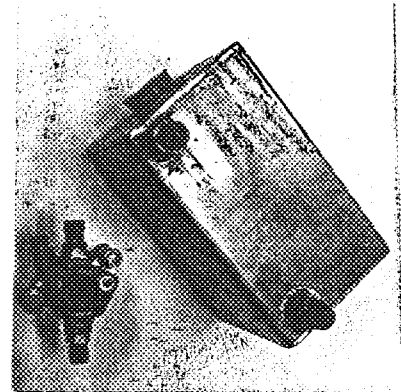
Amendment to Form of Recognition

FEDERATION INTERNATIONALE DE L'AUTOMOBILE

No. Reference No.

GROUP II VARIANT

Equipment for Dry Sump Oil System
Includes Pump and tank
Part No: CD 70/3



Auxilliary Chassis Member
Part No. CD 70/9

Date amendment is valid from 1/1/70

[Handwritten signature]



Secretary of F.I.A./R.A.C.



MOTOR SPORT DIVISION
The Royal Automobile Club,
31 Belgrave Square, London, S.W.1

Manufacturer FORD
Model SPORT TWINGAN
F.I.A. Recognition No. 1524
Amendment No. 29/28 ✓

Amendment to Form of Recognition

FEDERATION INTERNATIONALE DE L'AUTOMOBILE

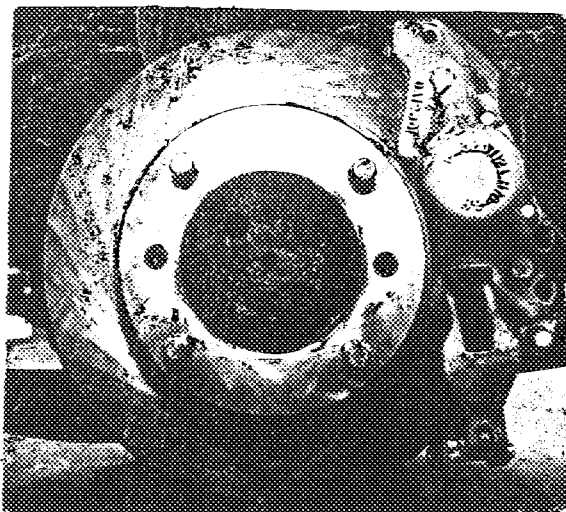
No. Reference No.

GE UP II V BLUNT

Equipment for Rear Disc Brake Conversion
Includes Caliper and mounting bracket, disc, and mounting collar

Part No: CG 70/50. Increases rear track by 0.5ins.

100.	Outside Dia. of disc 10 inches	5.25.
101.	Thickness of disc.	.375 inches.
102.	Length of brake lining.	2.25 inches.
103.	Width of brake lining.	1.562
104.	Number of pads per brake.	2 (+2 for handbrake)
105.	Total area per brake.	7 sq. ins. of pad. 113 sq. ins. of disc.



Date amendment is valid from 1/1/70

[Handwritten signature]

Stamp of F.I.A./R.A.C.



MOTOR SPORT DIVISION
The Royal Automobile Club,
31 Belgrave Square, London, S.W.1

Manufacturer PG&D

Model Escort TwinCam

F.I.A. Recognition No. 1524

Amendment No. 30/29v

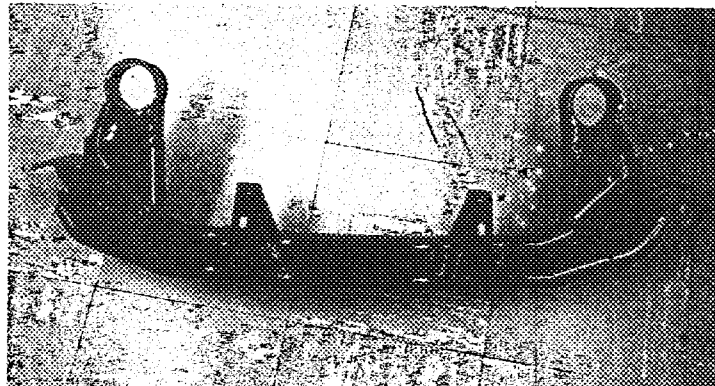
Amendment to Form of Recognition

FEDERATION INTERNATIONALE DE L'AUTOMOBILE

No.

Reference No.

Alternative Cross Member for use with heavy duty engine mounts,
Part No. CD 1000/151



Date amendment is valid from 11/7/90

Stamp of F.I.A./R.A.C.



MOTOR SPORT DIVISION
The Royal Automobile Club,
31 Belgrave Square, London, S.W.1

Manufacturer FORD
Model Escort Twin Cam
F.I.A. Recognition No. 1524
Amendment No. 31/30V

Amendment to Form of Recognition

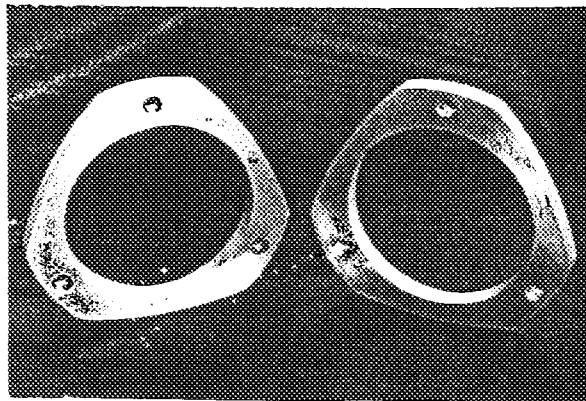
FEDERATION INTERNATIONALE DE L'AUTOMOBILE

No.

Reference No.

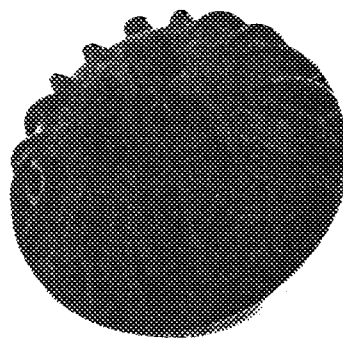
Variant

Strut top mount spacing piece. Part No: CD RG/37/C/1-74



Ref Amendment 22

Alternative differential housing cover. Part No. TD/03/DZ



Date amendment is valid from 1/4/71

Stamp of F.I.A./R.A.C.



MOTOR SPORT DIVISION
The Royal Automobile Club,
31 Belgrave Square, London, S.W.1

Manufacturer FORD
Model Escort Twin Cam
F.I.A. Recognition No. 1524
Amendment No. 32/31V

Amendment to Form of Recognition

FEDERATION INTERNATIONALE DE L'AUTOMOBILE

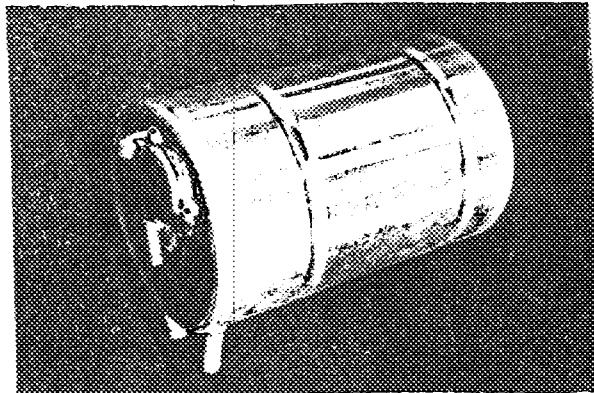
No.

Reference No.

Notes

Ref Amendment 28 Equipment for dry sump oil system

Alternative Supplier Tank.
Same capacity and Part No. for kit



Ref Amendment 22

~~Alternative axle~~

Note: Brakes

Bore of Cylinder	22.8 mm	0.9 ins
Dia of drums	228 mm	9.0 ins
length of lining	182.8 mm	7.2 ins
Width of lining	55.8 mm	2.2 ins
Number of shoes	2	
Area of brake	10200.2 mm ²	3.168 sq ins

Ref Amendment 2

~~Material of wheel arch extension steel or aluminium~~

Date amendment is valid from 1/4/71

Stamp of F.I.A./R.A.C.



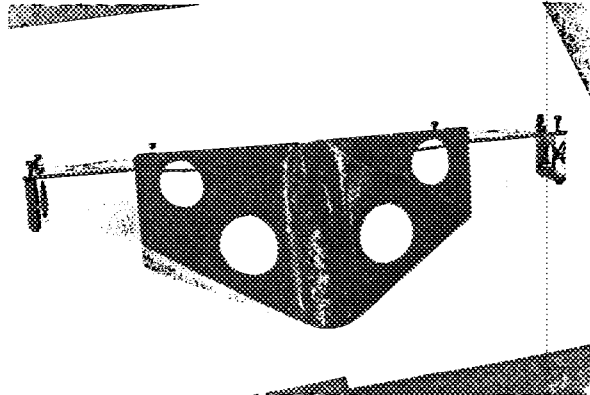
MOTOR SPORT DIVISION
The Royal Automobile Club,
31 Belgrave Square, London, S.W.1

Manufacturer FORD
Model Escort Twin Cam
F.I.A. Recognition No. 1524
Amendment No. 33/32V

Amendment to Form of Recognition

FEDERATION INTERNATIONALE DE L'AUTOMOBILE

No. _____ Reference No. _____
Variant Group II
Rear axle differential protection, shield and reinforcing plate.
Part No. PC 0008



Date amendment is valid from 1/4/71

Stamp of F.I.A./R.A.C.



FORD-ESCORT TWIN CAM

MARQUE ET MODELE

5/68

VALIDITE HOMOLOGATION

1594

FICHE NR.

2 / 1600

GROUPE / CLASSE

EXTENSIONS	DEBUT VALIDITE	DESCRIPTION	NOTES
1/1V	5/68	JANTE - PROTECTION INTERIEURE	
2/2V	5/68	SUSPENSION - ALTERNATEUR - DIFFERENTIEL AUTOBLOQUANT	
3/3V	5/68	AILES ELARGIEE	
4/4V	5/68	ELARGISSEUR D'AILES - RESERVOIR	
5/5V	5/68	TABLEAU DE BORD - RAPPORTS	
6/6V	5/68	COUPLE FINAL	
7/7V	5/68	BOITE A VITESSES - BIELLE	
8/8V	5/68	SUSPENSION	
9/9V	11/68	COUVERCLE DE CAMES -	
10/10V	11/68	TRANSMISSION - TABLEAU DE BORD - PHARES -	
11/11V	11/68	SUSPENSION - JANTE - VOIE	
12/12V	1/69	GLACES - COLLECTEUR D'ECHAPP.	
13/13V	1/69	DIFFERENTIEL - COUPLE FINAL	
14/14V	1/69	SUSPENSION - TRANSMISSION -	
15/15V	4/69	ENTRETOISE	
16/16V	4/69	VENTILATEUR - COUPLE FINAL	
17/17V	4/69	TRANSMISSION	

Autres homologations du modèle

Vérifiée le 24/10/95 par  visée ce jour le _____ par _____



FEDERATION INTERNATIONALE DE L'AUTOMOBILE

FORD - ESCORT TWIN CAM

5/68 -

1524

MARQUE ET MODELE

VALIDITE HOMOLOGATION

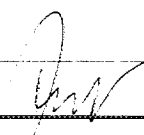
FICHE NR.

2 / 1600

GRUPE / CLASSE

EXTENSIONS	DEBUT VALIDITE	DESCRIPTION	NOTES
18/18V	4/68	RAPPORTS -	
19/19V	4/68	VERSION AVEC DIRECTION A 4 ADUCE	
20/20V	5/69	CARROSSERIE -	
21/21V	7/69	COUPLE FINAL - POMPE A HUILE -	
		PHARES - FIXATION DE ROUES -	
22/22V	7/69	AXE AR - COUPLE FINAL - AUTOBLOQUANT	
23/23V	7/69	SUSPENSION -	
24/24V		COUPLE FINAL - LEVIER	
25/1E	1/70	TOLERANCES -	
26/25V	1/70	VILLEBREQUIN - BIELLE - CHAPEAUX	
		DE PALIER -	
27/26V	1/70	EMBRAYAGE - VOLANT MOTEUR	
		BOITE A VITESSES -	
28/27V	1/70	CARTER SEC - BARRE ANTIRAP -	
		PROCEMENT	
29/28V	1/70	VOIE - FREIN	
30/29V	7/70	CHASSIS	
31/30V	4/71	SUSPENSION - DIFFERENTIEL	
32/31V	4/71	CARTER SEC - FREIN -	

Autres homologations du modèle

Vérifiée le 29/10/95 par  visée ce jour le _____ par _____

