

Manufacturers Reference No. for Application

28/H/2



F.I.A. Recognition No.

1224

ROYAL AUTOMOBILE CLUB

PALL MALL, LONDON, S.W.1.

Federation Internationale de l'Automobile.

Form of Recognition in accordance with
Appendix J to the
International Sporting Code.

Manufacturer FORD MOTOR COMPANY LIMITED

Model CONSUL CORTINA (DEVELOPED BY LOTUS) Year of Manufacture 1963

Serial No. of Chassis Z74c 002368K

Engine LP 001

Type of Coachwork Saloon

Recognition is valid from 5th September 1963

In category Touring

9/22



Photograph to be affixed here 3/4 view of car from front right.

Stamp of F.I.A./R.A.C. to be
affixed here.

[Handwritten signatures and initials]
Form: R.F.I.A.

General description of car:

Specify here material/s of
chassis/body construction

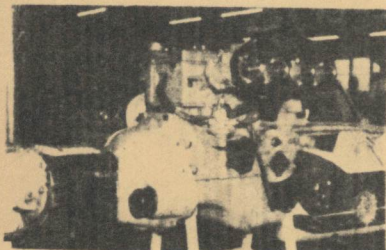
Two door, 4/5 seater saloon
All steel welded integral construction
Light alloy door panels, hood and boot lids.

Photographs to be affixed below.

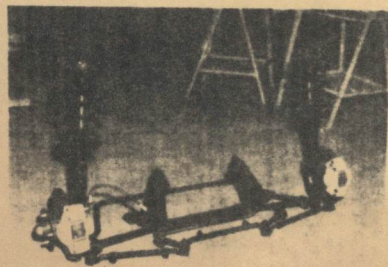
3/4 view of car from rear left.



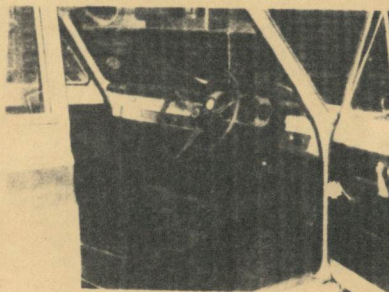
Engine unit with accessories from right.



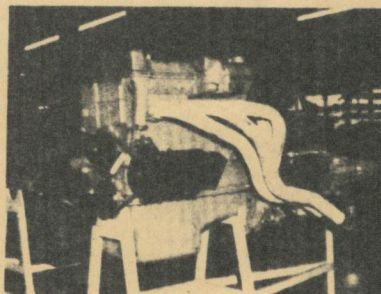
Front axle complete (without wheels).



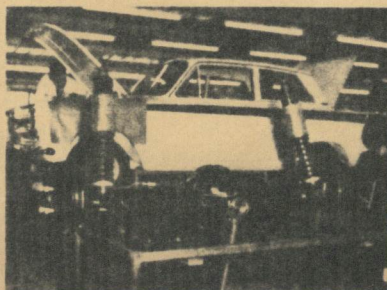
Interior view of car through driver's door.



Engine unit with accessories from left.



Rear axle complete (without wheels).



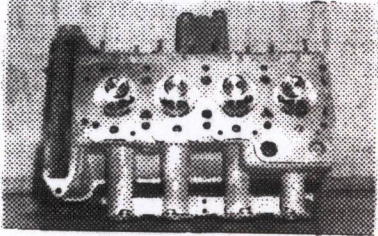
ENGINE

in line _____
 No. of cylinders 4 ~~max~~ _____
~~opposit~~ _____
 Cycle Four stroke Firing order 1, 3, 4, 2
 Capacity 1558 c.c. Bore 82.55 m.m. Stroke 72.75 m.m.
 Maximum rebore 1 mm Resultant capacity 1595 c.c.
 Material of cylinder block Cast iron Material of sleeves, if fitted Cast iron
 Distance from crankshaft centre line to top face of block at centre line of cylinders 197.8 m.m.
 Material of cylinder head Aluminium alloy Volume of one combustion chamber 40 c.c.
 Compression ratio 9.8
 Material of piston Aluminium alloy No. of piston rings 3
 Distance from gudgeon pin centre line to highest point of piston crown 40.44 m.m.
 Bearings { Crankshaft main bearings: Type Copper lead Dia. 54.00 m.m.
 Connecting rod big end: Type Copper lead Dia. 49.21 m.m.
 Weights { Flywheel 6.98 kg.
 Crankshaft 11.00 kg.
 Connecting rod .567 kg.
 Piston with rings .365 kg.
 Gudgeon pin .112 kg.
 No. of valves per cylinder Two Method of valve operation O.H.C. & Tappets
 No. of camshafts Two + Location of camshafts Cylinder head
 Type of camshaft drive Single roller chain
 Diameter of valves: Inlet 38.86 m.m. Exhaust 33.66 m.m.
 Diameter of port at valve seat: Inlet 36.36 m.m. Exhaust 31.16 m.m.
 Tappet clearance for checking timing: Inlet .25 m.m. Exhaust .25 m.m.
 Valves open: Inlet 26° B.T.D.C. Exhaust 66° B.B.D.C.
 Valves close: Inlet 66° A.B.D.C. Exhaust 26° A.T.D.C.
 Maximum valve lift: Inlet 8.89 m.m. Exhaust 8.89 m.m.
 Degrees of crankshaft rotation from ~~180°~~ T.D.C. to—
 Maximum lift: Inlet 110 Exhaust 250
 ¾ Maximum lift: Inlet 52 Exhaust 192
 Valve springs: Inlet Coil Exhaust Coil
 Type Coil
 No. per valve Two
 Carburettor: Type Horizontal No. fitted Two
 (up or down draft, horizontal)
 Make Weber Model 40 D.C.O.E.
 Flange hole diameter 40 m.m. Choke diameter 30 m.m.
 Main jet identification No. 115

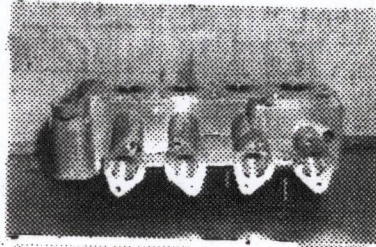
+ (with 3rd camshaft driving auxillary equipment)

Air filter: Type Paper element No. fitted One
 Inlet manifold:
 Diameter of flange hole at carburettor 40 m.m.
 Diameter of flange hole at port Integral manifold with head m.m.

Photograph of combustion chamber to be affixed here.

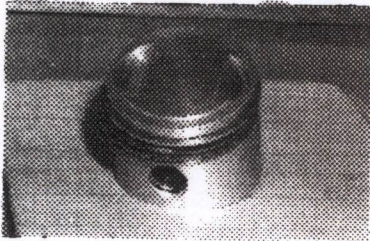


Photograph of inlet manifold to be affixed here.

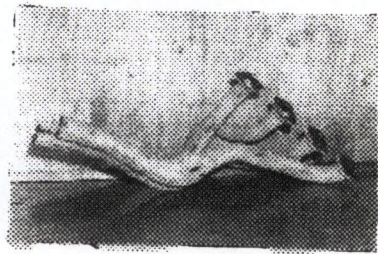


Exhaust manifold:
 Diameter of flange hole at port 34.0 m.m.
 Diameter of flange hole at connection to silencer inlet pipe 2 pipes at 38.3 m.m.

Photograph of piston showing crown to be affixed here.



Photograph of exhaust manifold to be affixed here.



ENGINE ACCESSORIES

Make of fuel pump A.C. No. fitted One
 Method of operation Mechanical
 Type of ignition system Coil and distributor coil or magneto
 Make of ignition Lucas Model Distributor 25D4
 Method of advance and retard Automatic centrifugal
 Make of ignition coil Lucas Model HA 12
 No. of ignition coils One Voltage 12
 Make of dynamo Lucas Model C 40 L
 Voltage of dynamo 12 Maximum output 25 amps.
 Make of starter motor Lucas Model M 25 G
 Battery: No. fitted One in luggage Voltage 12 Capacity 38 or 51 amp. hour
 Oil Cooler (if fitted) type Optional extra Capacity _____ pints

Make **FORD**

CONSUL CORTINA (DEVELOPED

Model **BY LOTUS**) F.I.A. Recognition No.

1224

Manufacturers Reference No. of Application

28/H/2

TRANSMISSION

Make of clutch **Borg and Beck** Type **Diaphragm type dry plate**
 Diameter of clutch plate **184.15 mm** No. of plates **One**
 Method of operating clutch **Hydraulically operated**
 Make of gearbox **Hobbs Westinghouse gears in Type Conventional synchromesh**
 No. of gearbox ratios **Ford Box** **4 forward and 1 reverse**
 Method of operating gearshift **Manual**
 Location of gearshift **Centrally mounted floor change. Remote control in**
 Is overdrive fitted? **No** **aluminium housing**
 Method of controlling overdrive, if fitted

	GEARBOX RATIOS		ALTERNATIVE RATIOS					
	Ratio	No. of Teeth	Ratio	No. of Teeth	Ratio	No. of Teeth	Ratio	No. of Teeth
1.	2.51	$\frac{21}{28} \times \frac{17}{32}$	3.543	$\frac{32}{17} \times \frac{32}{17}$	3.543	$\frac{32}{17} \times \frac{32}{17}$		
2.	1.64	$\frac{21}{28} \times \frac{22}{28}$	2.396	$\frac{32}{17} \times \frac{28}{22}$	2.04	$\frac{32}{17} \times \frac{27}{24}$		
3.	1.23	$\frac{21}{28} \times \frac{26}{24}$	1.412	$\frac{32}{17} \times \frac{21}{28}$	1.412	$\frac{32}{17} \times \frac{21}{28}$		
4.	1.00	Direct	1.00	Direct	1.00	Direct		
5.								

Type of final drive **Hypoid crown wheel and pinion in aluminium housing**
 Type of differential **Bevel gear and limited slip differential**
 Final drive ratio **3.9 : 1** Alternatives **3.77, 4.125, 4.44, 4.7**
 No. of teeth **39/10** **34/9, 33/8, 40/9, 35/7**
 Overdrive ratio, if fitted **-**

WHEELS

Type **Light weight pressed steel** Weight **10.88** kg.
 Method of attachment **Four studs**
 Rim diameter **330.2** m.m. Rim width **139.5** m.m.
 Tyre size: Front **600 x 13** Rear **600 x 13**

BRAKES

Method of operation **Hydraulic**
 Is servo assistance fitted? **Yes**
 Type of servo, if fitted **Girling Hydraulic 2.04/1 Assistance Rat**
 No. of hydraulic master cylinders **One** Bore **19.05** m.m.



+ with aluminium clutch housing and aluminium rear gearbox housing

	Front		Rear	
No. of wheel cylinders	Four		Two	
Bore of wheel cylinders	48.6	m.m.	17.8	m.m.
Inside diameter of brake drums	-	m.m.	228.6	m.m.
No. of shoes per brake	-		2 per drum	
Outside diameter of brake discs	247.0	m.m.	-	m.m.
No. of pads per brake	Two		-	
Dimensions of brake linings per shoe or pad (if all shoes or pads in each brake are not of same dimensions, specify each)				

	Front		Rear	
Length	56.9	m.m.	219	m.m.
		m.m.		m.m.
Width	47.5	m.m.	44.6	m.m.
Total area per brake	5404	m.m. ²	9770	m.m. ²

SUSPENSION

	Front		Rear	
Type	Independent		Live axle	
Type of spring	Coil		2 radius rods & 'A' bracket	
			Coil	
Is stabiliser fitted?	Yes 15 dia.		No	
Type of shock absorber	Armstrong Hydraulic		Telescopic adjustable	
No. of shock absorbers	Two		Two	

STEERING

Type of steering gear	Recirculating ball	
Turning circle of car	11.3	m., approx.
No. of turns of steering wheel from lock to lock	2 1/4	

CAPACITIES AND DIMENSIONS

Fuel tank	36.35	litres	Sump	3.69	litres
Radiator	5.97	litres			
Overall length of car	427	cm.	Overall width of car	158.5	cm.
Overall height of car, unladen (with hood up, if appropriate)	136.9	cm.			
Distance from floor to top of windscreen:					
Highest point	103	cm.	Lowest point	100.3	cm.
Width of windscreen:					
Maximum width	125	cm.	Minimum width	111	cm.
*Interior width of car	133	cm.			
No. of seats	4				
Track: Front	131	cm.	Rear	127.5	cm.
Wheelbase	249.9	cm.	Ground clearance	135	m.m.

*(To be measured at the immediate rear of the steering wheel, and the width quoted to be maintained in a vertical plane of not less than 25 cms.)

Overall weight with water, oil and spare wheel, but without fuel 751 kgs.

Additional information for cars fitted with two-cycle engines

System of cylinder scavenging.....

Type of lubrication.....

Size of inlet port:

Length measured around cylinder wall..... m.m.

Height..... m.m. Area..... m.m.²

Size of exhaust port:

Length measured around cylinder wall..... m.m.

Height..... m.m. Area..... m.m.²

Size of transfer port:

Length measured around cylinder wall..... m.m.

Height..... m.m. Area..... m.m.²

Size of piston port:

Length measured around piston..... m.m.

Height..... m.m. Area..... m.m.²

Method of pre-compression.....

Bore and stroke of pre-compression cylinder, if fitted..... m.m.

Distance from top of cylinder block to lowest point of inlet port..... m.m.

Distance from top of cylinder block to highest point of exhaust port..... m.m.

Distance from top of cylinder block to highest point of transfer port..... m.m.

Drawing of cylinder ports.

Supercharger, if fitted

Make..... Model or Type No.....

Type of drive..... Ratio of drive.....

Fuel injection, if fitted

Make of pump..... Model or Type No.....

Make of injectors..... Model or Type No.....

Location of injectors.....

Optional equipment affecting preceding information:—

1. Alternative fuel tank 63.5 litres

2. ~~Front~~ under body shield

3. Rear under body shields

4. Four bladed fan

5. Optional road wheels: Rim diameter: 330.2 mm. Rim Width: 101.6 mm.

6. Heavy duty suspension, including non-adjustable shock absorbers

7. Optional roll bar size $\frac{7}{8}$ "

8. Touring camshaft - Valves Open: Inlet 22° B.T.D.C. Exhaust: 62° B.B.D.C.
Valves Close: Inlet 62° A.B.D.C. Exhaust: 22° A.T.D.C.
Maximum Valve lift: Inlet 8.89 mm. Exhaust: 8.89 mm.

Degrees of crankshaft rotation from T.D.C. to:

Maximum lift:	Inlet 110	Exhaust: 250
$\frac{3}{4}$ Maximum lift:	Inlet 57	Exhaust: 197

9. Touring seats

10. Cast iron clutch housing

11. Cast iron gearbox rear housing

12. Cast iron differential housing

13. Side and rear windows toughened glass

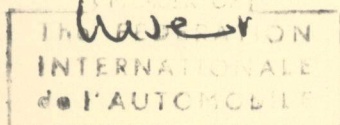
14. Hypoid differential unit

15. "Covrad" light alloy oil cooler M 6738

16. 17.80 mm bore master cylinder.(brakes)

Delete existing valve lift 8.89 mm

valve lift.



Manufacturers Reference No. for Application

28/1/2



F.I.A. Recognition No. 1224

A

ROYAL AUTOMOBILE CLUB

PALL MALL, LONDON, S.W.1.

Federation Internationale de l'Automobile.

Amendment to Form of Recognition

Manufacturer..... FORD MOTOR COMPANY LIMITED

Model..... CONSUL CORTINA (DEVELOPED BY LOTUS) 1963

Under "Optional Equipment"

DELETE Alternative fuel tank 63.5 litres

INSERT Additional fuel tanks 63.5 litres or 36.35 litres

Stamp of F.I.A./R.A.C. to be
affixed here.

Date amendment is valid from

4/11/63 liste 9/24

Form: R.F.I.B.

Manufacturers Reference No. for Application

28/HY2



F.I.A. Recognition No.

1224 B

ROYAL AUTOMOBILE CLUB

PALL MALL, LONDON, S.W.1.

Federation Internationale de l'Automobile.

Amendment to Form of Recognition

Manufacturer..... FORD MOTOR CO. LTD.

Model..... CONSUL CORTINA DEVELOPED BY LOTUS

Under "Optional Equipment"

After "Additional fuel tanks 63.5 litres or 36.35 litres"

Insert "Alternative fuel tank 100 litres"



W. Schild
John Greay

Stamp of F.I.A./R.A.C. to be
affixed here.

Date amendment is valid from

13 JANV 1964

Form: R.F.I.B.

	Front	Rear
No. of wheel cylinders
Bore of wheel cylinders m.m. m.m.
Inside diameter of brake drums m.m. m.m.
No. of shoes per brake
Outside diameter of brake discs m.m. m.m.
No. of pads per brake
Dimensions of brake linings per shoe or pad (if all shoes or pads in each brake are not of same dimensions, specify each)	

	Front	Rear
Length m.m. m.m.
 m.m. m.m.
Width m.m. m.m.
Total area per brake m.m. ² m.m. ²

SUSPENSION

	Front	Rear
Type
Type of spring
Is stabiliser fitted?
Type of shock absorber
No. of shock absorbers

STEERING

Type of steering gear.....

Turning circle of car..... m., approx.

No. of turns of steering wheel from lock to lock.....

CAPACITIES AND DIMENSIONS

Fuel tank..... litres Sump..... litres

Radiator..... litres

Overall length of car..... cm. Overall width of car..... cm.

Overall height of car, unladen (with hood up, if appropriate)..... cm.

Distance from floor to top of windscreen:

Highest point..... cm. Lowest point..... cm.

Width of windscreen:

Maximum width..... cm. Minimum width..... cm.

*Interior width of car..... cm.

No. of seats.....

Track: Front..... cm. Rear..... cm.

Wheelbase..... cm. Ground clearance..... m.m.

*(To be measured at the immediate rear of the steering wheel, and the width quoted to be maintained in a vertical plane of not less than 25 cms.)

Overall weight with water, oil and spare wheel, but without fuel..... kgs.

Manufacturers Reference No. for Application

28/H/2



F.I.A. Recognition No.

1224

/c

ROYAL AUTOMOBILE CLUB

PALL MALL, LONDON, S.W.1.

Federation Internationale de l'Automobile.

Amendment to Form of Recognition

Manufacturer Ford Motor Co.Ltd.,

Model Consul Cortina (Developed by Lotus)

Add to optional equipment

(1) Connecting Rod

Material EN 24

Length Centre to Centre 4.826"

4.825"

Weight 0.588 kgs

Part No. 105/116

(2) Alternative Gear Ratios

Part No. A - 28F - 700

1st 2.97 $\frac{30}{19}$ x $\frac{32}{17}$

2nd 2.01 $\frac{30}{19}$ x $\frac{28}{22}$

3rd 1.40 $\frac{30}{19}$ x $\frac{23}{26}$

4th 1.00 DIRECT

Handwritten signatures and initials:
Schild
Dux
du

Stamp of F.I.A./R.A.C. to be affixed here.

Date amendment is valid from

11th July 1964

Form R.F.I.B.

Manufacturers Reference No. for Application

28/4/2



F.I.A. Recognition No.

1224

/D/V

ROYAL AUTOMOBILE CLUB

PALL MALL, LONDON, S.W.1.

Federation Internationale de l'Automobile.

Amendment to Form of Recognition

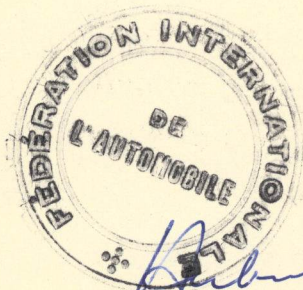
Manufacturer..... Ford Motor Company Ltd.

Model..... Consul Cortina (Developed by Lotus)

Add to Options.

Alternative choke sizes for 40DCOE Weber carburettors.

1. 32 m.m. diameter.
2. 33 m.m. diameter.
3. 34 m.m. diameter.



Stamp of F.I.A./R.A.C. to be affixed here.

Date amendment is valid from.....

16 Nov. 1964.

Form: R.F.I.B.

Manufacturers Reference No. for Application

28/H/2



F.I.A. Recognition No.

1224 /E/V

ROYAL AUTOMOBILE CLUB

PALL MALL, LONDON, S.W.1.

Federation Internationale de l'Automobile.

Amendment to Form of Recognition

Manufacturer: FORD MOTOR COMPANY LTD.

Model: CONSUL CORTINA (DEVELOPED BY LOTUS)

VARIANT TO STANDARD PRODUCTION

as from Chassis No. Z74D 424397 ALL CARS ARE FITTED WITH

1. NEW RADIATOR GRILLE
2. NEW DASH PANEL FACIA
3. NEW REAR QUARTER PILLAR WITH AIR EXIT VENT
4. NEW SPLIT PROPELLOR SHAFT WITH CENTRE STEADY BEARING
5. NEW CONNECTING ROD PART NO. 26E714(125E)
6. VALVE (INLET) - MATERIAL EN.52
DIAMETER OF HEAD OF VALVE 1.50"
PART NO. B2442

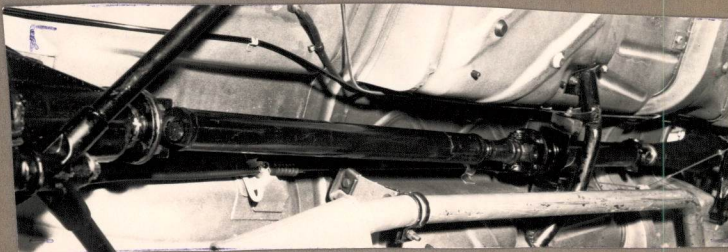
(1)



(2)



(4)



(3)



to build
Spencer
Good
Jim Foster

Stamp of F.I.A./R.A.C. to be affixed here.

Date amendment is valid from

Form RF18
1er Fevrier 1965

Manufacturers Reference No. for Application

28/H/2



F.I.A. Recognition No.

1224

F/V

ROYAL AUTOMOBILE CLUB

PALL MALL, LONDON, S.W.1.

Federation Internationale de l'Automobile.

Amendment to Form of Recognition

Manufacturer..... FORD MOTOR COMPANY LTD.

Model..... CONSUL CORTINA (DEVELOPED BY LOTUS)

ADD TO OPTIONAL EQUIPMENT

1. CONNECTING ROD

MATERIAL EN.19

LENGTH CENTRE TO CENTRE 4.805"

4.802"

WEIGHT .511 Kgs.

PART NO. B2450

2. GUDGEON PIN

(TO SUIT CONNECTING ROD B2450)

OVERALL LENGTH 2.530"

DIAMETER 1" + 0.00" - 0.0002"

Arbutnotch...



Stamp of F.I.A./R.A.C. to be affixed here.

Schild
...
...
...

Date amendment is valid from

1^{er} Février

Form: R.F.I.B.

Manufacturers Reference No. for Application

28/H/2



F.I.A. Recognition No.

1224 G/V

ROYAL AUTOMOBILE CLUB

PALL MALL, LONDON, S.W.1.

Federation Internationale de l'Automobile.

Amendment to Form of Recognition

Manufacturer FORD MOTOR COMPANY LTD.

Model CONSUL CORTINA (DEVELOPED BY LOTUS)

VARIANT TO STANDARD PRODUCTION

As from Chassis No. BA 74 EM 59043 ALL CARS ARE FITTED WITH DIFFERENT CARBURETTOR GASKETS INCORPORATING

1.	<u>PART No.</u>	<u>DESCRIPTION</u>
	A26-S-009	SPACER (4 PER CAR)
	26-S-086	RUBBER 'O' RING (8 PER CAR)



Handwritten signatures and notes:
 Schind
 [Signature]
 [Signature]
 [Signature]

Stamp of F.I.A./R.A.C. to be affixed here.

Date amendment is valid from

1/8/65

Form: R.F.I.A

list 13/1

Manufacturers Reference No. for Application

28/H/2



F.I.A. Recognition No.

9/10

ROYAL AUTOMOBILE CLUB

PALL MALL, LONDON, S.W.1.

Federation Internationale de l'Automobile.

Amendment to Form of Recognition

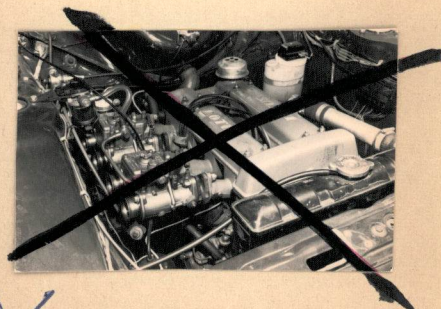
Manufacturer..... FORD MOTOR COMPANY LTD.

Model..... CONSUL CORTINA (DEVELOPED BY LOTUS)

ADD TO OPTIONAL EQUIPMENT

1. INLET VALVE - PART No. B.2526
MATERIAL EN.52
HEAD DIAMETER 1.562"
2. SPECIAL DUTY REAR SPRING ASSEMBLY PART No. A28-D-733

3. RALLY CARBURETTOR GASKETS PART No. RA26-S-009



Schild
Amend

Stamp of F.I.A./R.A.C. to be affixed here.

Date amendment is valid from.....

Form: R.F.I.B.

Manufacturers Reference No. for Application

28/H/2



F.I.A. Recognition No.

1224

/H/V

ROYAL AUTOMOBILE CLUB

PALL MALL, LONDON, S.W.1.

Federation Internationale de l'Automobile.

Amendment to Form of Recognition

Manufacturer FORD MOTOR CO. LTD.

Model CONSUL CORTINA (DEVELOPED BY LOTUS)

ADD TO OPTIONAL EQUIPMENT

1. EXPORT SUSPENSION CONSISTING OF HEAVY DUTY FRONT SPRINGS, FIVE LEAF REAR SPRINGS, HEAVY DUTY FRONT CROSS MEMBER (SEE PHOTOGRAPH).



2. THE ORIGINAL SINGLE PROPELLOR SHAFT FITTED TO CARS BEFORE CHASSIS No. Z74D424397 REMAINS AN OPTIONAL FITTING TO CARS AFTER THIS NUMBER.
3. THE INCREASED FRONT TRACK SHOWN IN ITEM 3 OF FORM 1224/1/ET MEASURES 133.3 CENTIMETRES.

[Handwritten signatures and initials]

Stamp of F.I.A./R.A.C. to be affixed here.

Date amendment is valid from.....

Form: R.F.I.B.

Manufacturers Reference No. for Application

28/H/2



F.I.A. Recognition No.

1224/7/ET

ROYAL AUTOMOBILE CLUB

PALL MALL, LONDON, S.W.1.

Federation Internationale de l'Automobile.

Amendment to Form of Recognition

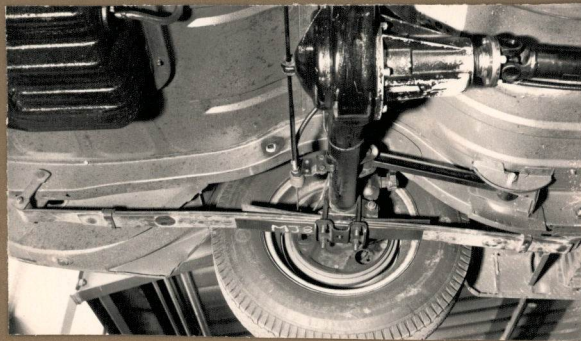
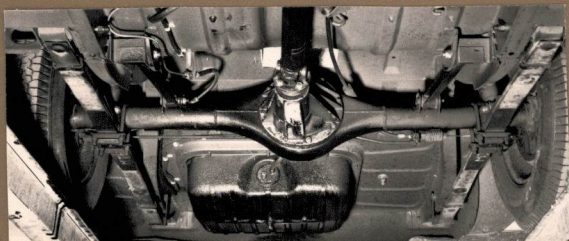
Manufacturer..... FORD MOTOR CO. LTD.

Model..... CONSUL CORTINA (DEVELOPED BY LOTUS)

Inte...
...
...
...

VARIANT TO STANDARD PRODUCTION

1. As from Chassis No. BA74EU59002 (March 7th 1965) all cars fitted with new rear axle location incorporating radius arms and leaf springs as per photograph. Original rear suspension location incorporating radius arms and 'A' bracket retained as optional equipment.
2. As from Chassis No. BA74EU59002 (March 7th 1965) those cars fitted with new rear axle location have decrease in wheel base from 249.9 cm. to 248.29 cm. Those cars fitted with original axle location have increase in wheel base of 1.63 cm.
3. As from Chassis No. BA74EU59002 (March 7th 1965) all cars have increased front track measurement by 1.27 cm.



Stamp of F.I.A./R.A.C. to be affixed here.

Date amendment is valid from *1st April 1965*
Form: R.F.I.B.